



A CAR IS NOT A LABEL.



*A car is an orchestration of thousands of complex,
moving and synchronizing parts.
It should be more than a fashion accessory.
More than a status symbol in the form of a badge.
Nowhere is this more true than in an Acura.
Because a car, especially a luxury car, should be
one of substance.*

GET THE STORY
BEHIND THE
STORY.

*Wherever you see a button
or icon like the ones below,
additional content exists
containing more information
on the featured technology.
To experience it, simply click
and enjoy.*

WATCH
THE
VIDEO



1986	1987	1988	1989	1990	1991	1992	1993	1994	1995	1996	1997	1998	1999	2000	2001	2002	2003	2004	2005	2006	2007	2008	2009	2010	2011
LEGEND The world's first Japanese luxury-brand vehicle.	INTEGRA Integra available in 3- or 5-door hatchback.	INTEGRA Winner of the IMSA International Sedan Series Manufacturer's Championship.	LEGEND First Acura with a standard driver's airbag.	INTEGRA Second-generation Integra introduced.	NSX The first all-aluminum sports car, and first use of VTEC technology.	VICOR First 5-cylinder engine from Acura.	LEGEND Best-selling luxury import, sixth year in a row.	LEGEND First 6-speed manual transmission offered in an Acura.	TL First generation of midsize sport sedan introduced.	RL First vehicle with in-dash satellite-limited navigation.	CL First luxury import brand to assemble vehicles in the U.S.	INTEGRA RealTime Racing wins SCCA World Challenge Touring two Championships.	TL First Acura with dual-stage driver and passenger side airbags.	INTEGRA TYPE-R The 195-hp "Ultimate Integra" sold in limited numbers.	MDX First luxury SUV with 3rd-row seating.	RSX Introduction of i-VTEC technology.	TSX Premium sport sedan launches.	TL First vehicle to offer Bluetooth wireless technology.	RL First vehicle to offer SH-AWD and XM NavTraffic.	RDX First Variable Flow Turbo-charged engine from Acura.	MDX First Acura with Active Damper System and tuning at Nürburgring.	TSX Redesigned TSX debuts at New York Auto Show.	TL First brand with across-the-brand NHTSA 5-star crash safety ratings.*	ZDX First vehicle from Acura's new design studio in California.	TSX SPORT WAGON The first sport wagon offered by Acura.

LOOKING BACK AT 25 YEARS OF LOOKING FORWARD.

When we launched the Acura Legend in 1986, its very existence constituted a first. In the years since, we've never stopped innovating. As we enter our second quarter-century, we continue to build on what we've learned, as well as search for new breakthroughs. Because when you're building the next generation of luxury vehicles, you don't stick with the status quo – you advance.



CLICK TO VIEW A MODEL BROCHURE:



SAFETY

Advanced Compatibility
Engineering™ Body Structure

WATCH
THE
VIDEO

A LOGO CANNOT SAVE YOUR LIFE.

Of all the feelings that driving a luxury vehicle elicits, a sense of security is the most important. It's why we incorporate safety into virtually every aspect of design. The chassis of every Acura features an Advanced Compatibility Engineering (ACE®) body structure. Unlike competitive designs that just absorb frontal crash energy, ACE uses a network of structural elements to help redirect crash energy around the cabin and away from you.

COMFORT

Active Damper System

WATCH
THE
VIDEO

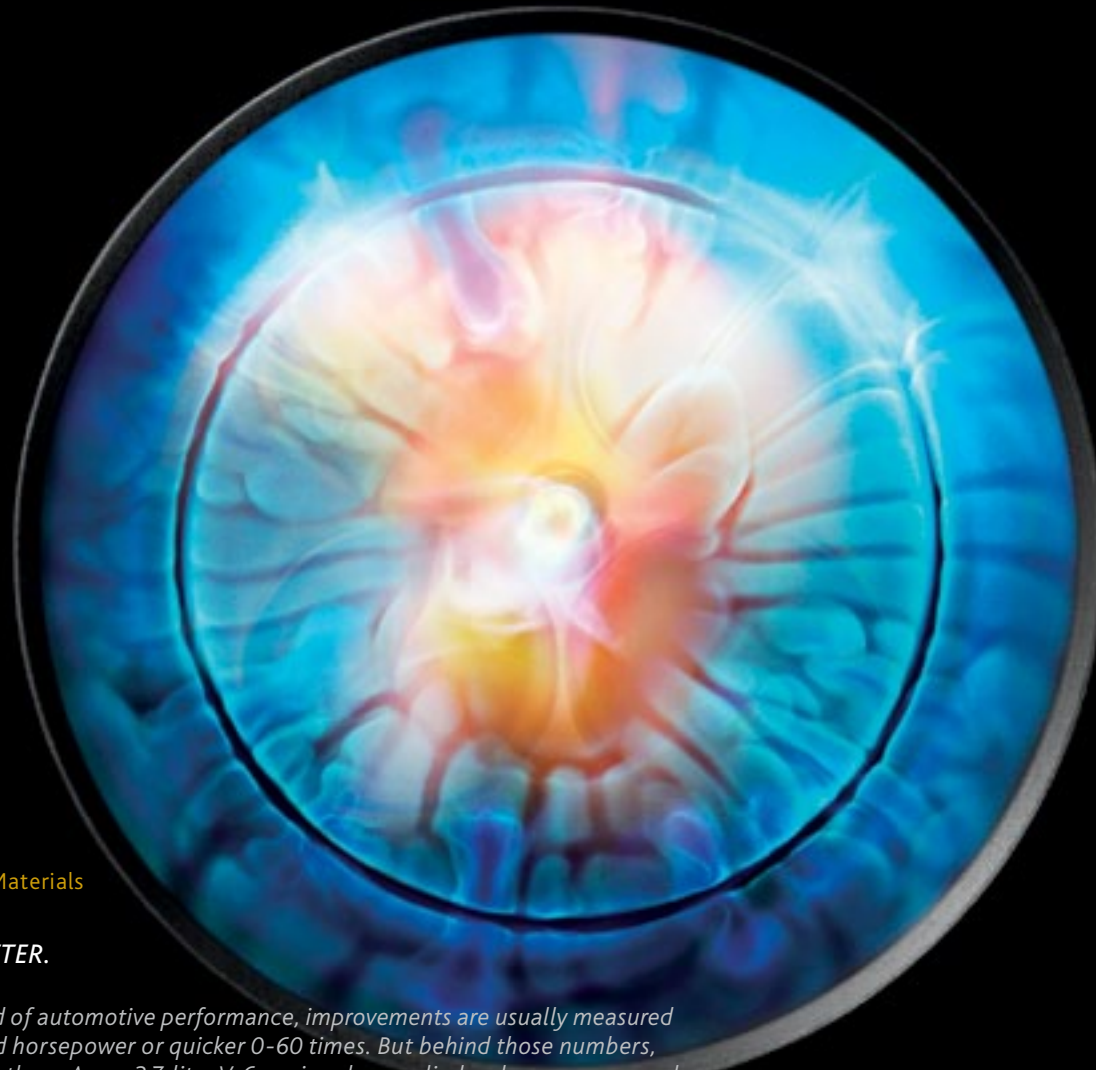
***SUBSTANCE IN THE FORM OF
A MAGNETO-RHEOLOGICAL
SUBSTANCE.***

This is innovation at the molecular level. A liquid that instantly thickens in the presence of an electromagnetic charge, creating the intricate shape you see here.

Inside the Acura Active Damper System, it responds by increasing resistance, changing the vehicle's ride quality from smooth and luxurious to tight and sporty in as little as 5 milliseconds.

The system continuously monitors road conditions and driver input, giving you greater control and more responsive handling.

CLICK TO VIEW A MODEL BROCHURE:



PERFORMANCE

Advanced Materials

WATCH
THE
VIDEO

.0001 BETTER.

In the world of automotive performance, improvements are usually measured in increased horsepower or quicker 0-60 times. But behind those numbers, you'll find others. Acura 3.7-liter V-6 engines have cylinder sleeves composed of a silicon-embedded aluminum alloy. Engineered to stay cooler, this helps maintain a tolerance between the sleeves and the pistons that can be as little as nearly zero millimeters wide. Translation: more power is put to use. Along with systems like VTEC® valve management, it's one of the measures we employ to help our engines perform beyond their displacement.

CLICK TO VIEW A MODEL BROCHURE:



QUALITY

Laser Parts Verification



A SINGLE PART, BROKEN DOWN INTO 1,000,000 PARTS.

Imagine that every pushpin used to create this work of art was an inspection point. This still vastly underrepresents the amount of scrutiny it can take to verify even a single part. Using lasers accurate to within the width of a human hair, technicians compare auto parts to their CAD-file counterparts at up to 1,000,000 points to ensure precision. This attention to detail results in the tightest fit possible, helping our vehicles perform better and last longer.

PERFORMANCE

Super Handling All-Wheel Drive

WATCH
THE
VIDEO

**TO SEE HOW SUPER HANDLING
ALL-WHEEL DRIVE™ WORKS,
TOGGLE LEFT AND RIGHT.**

Unlike most competitive all-wheel-drive systems that simply transfer power between the front and the rear wheels, SH-AWD® also directs rear power from side to side. Take a turn, and up to 100% of available rear power is sent to the outside wheel, which is also rotated slightly faster. The combination of these forces literally pushes the vehicle through the curve, giving you a level of handling prowess unmatched by conventional all-wheel drive.





PERFORMANCE

Nürburgring Testing

WATCH
THE
VIDEO

**ANYONE CAN MAKE
A CLAIM. YOU GO TO
NÜRBURGRING TO
MAKE A STATEMENT.**

13 miles. 170 curves. Zero room for error. Known simply as the "Ring" to driving enthusiasts, the Nürburgring Nordschleife circuit in Germany is considered the toughest natural road course in the world. It's not a place you'd expect to find a vehicle that seats seven. In developing the driving characteristics of the MDX, we spent weeks there honing the vehicle's suspension, brakes and steering. So when we call the MDX a driver's SUV, it's something we went to considerable lengths to back up.

CLICK TO VIEW A MODEL BROCHURE:



TECHNOLOGY

Information Systems

WATCH
THE
VIDEO

A DRIVER. A CAR. A SATELLITE. A DATABASE. A CONVERSATION.

As the world becomes an ever-increasing web of connectivity, an Acura is engineered to be the ultimate link. Voice recognition gives you control over the Bluetooth® HandsfreeLink,² Navigation System³ and, with Song by Voice® technology, the music on the vehicle's hard disk drive or a USB-connected iPod.⁴

A blind spot information system (BSI) scans adjacent lanes and warns if it detects a vehicle that could be out of the driver's field of vision.*

AcuraLink® keeps you abreast of what various automotive systems are up to as well as the current driving conditions with XM NavTraffic® and NavWeather.™⁵ GPS-linked climate control tracks the position of the sun and it maintains temperature settings accordingly. It's all designed to keep you informed, entertained and comfortable.†

*The system is not a substitute for your own visual assessment before changing lanes; system accuracy will vary based on weather, size of object and speed. †Some features require available Technology or Advance Package.

CLICK TO VIEW A MODEL BROCHURE:



TECHNOLOGY

Active Sound Control



OUR SPEAKERS CAN CREATE AN INTERESTING SOUND. SILENCE.

Most speakers only create sound. Ours can also take it away. Active Sound Control in the ZDX, RL and TSX V-6 uses microphones to constantly monitor engine noise.

When unwanted noise is detected, opposing frequencies are broadcast through the speakers to eliminate it, literally fighting sound with sound. It even works when the vehicle's audio system is turned off. The result is dramatically reduced engine noise for a quieter, more comfortable cabin.

TECHNOLOGY

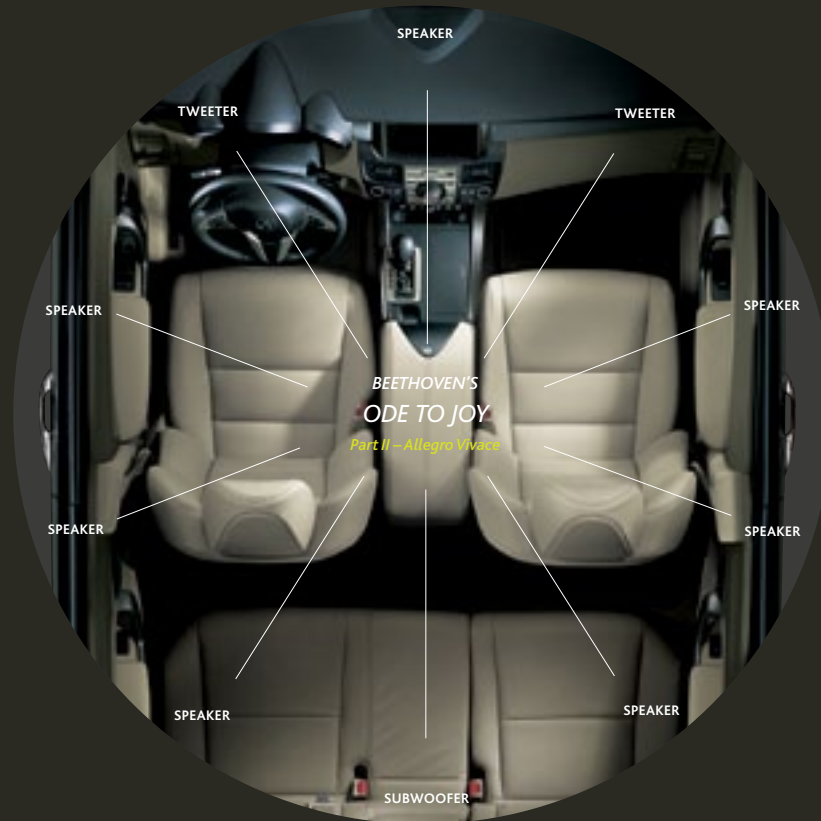
Acura/ELS Surround®
Premium Audio System

WATCH
THE
VIDEO

**AN AUDIO SYSTEM
IS NOT A CAR PART.**

For tuning engines, transmissions and suspension systems, we rely on automotive engineers. When we set out to create a world-class audio system, we looked for expertise elsewhere. Six-time GRAMMY® Award-winning recording engineer Elliot Scheiner was an obvious choice.

Working with our engineers, Scheiner helped create the Acura/ELS Surround Premium Audio System, and then precisely tuned the 5.1 system to take advantage of the unique sound field created by each vehicle's cabin. The result is music that matches the depth and nuance of the original studio recording.*



*ELS Surround Audio System included with Technology Package on ZDX, MDX, TL, TSX and RDX. RDX shown with available Technology Package.

SAFETY

Collision Mitigation Braking System

WATCH
THE
VIDEO

**SAFETY IS MORE THAN
20 SYSTEMS DESIGNED
TO LOOK OUT FOR YOU.
SOME, QUITE LITERALLY.**

It never hurts to have an extra eye on the road. The available Collision Mitigation Braking System™ (CMBS™) on the RL, MDX and ZDX is designed to do just that, alerting you of a possible collision and helping to lessen its impact.

Along with systems like Vehicle Stability Assist™ (VSA®), Brake Assist and Electronic Brake Distribution (EBD), it's proof that keeping you out of harm's way has always been one of our top priorities.



A DRIVER IS MOMENTARILY DISTRACTED.

A POTENTIAL COLLISION IS DETECTED.

AUDIO AND VISUAL ALERTS WARN THE DRIVER.

SEAT BELT TUGS TO FURTHER ALERT DRIVER.

BRAKES APPLY LIGHT PRESSURE.

SEAT BELT TIGHTENS, STRONG BRAKING ENSUES.*

*Depending on the circumstances, CMBS may not go through all of the alert stages before initiating the last stage (of collision mitigation).

CLICK TO VIEW A MODEL BROCHURE:



CRAFTSMANSHIP

Hand-Worked Materials

WATCH
THE
VIDEO

TECHNOLOGY HAS TAUGHT US WHEN NOT TO USE TECHNOLOGY.

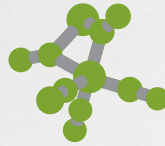
There are times when the most sophisticated equipment known to man, is man. So even in this era of automation, it still takes more than 1,400 people to assemble an Acura. Whether it's stretching the leather around a piece of the dash or sanding sheet metal prior to painting, there are still numerous times when the recognition of a human eye, and the skill of a human hand, are required to meet the level of precision we demand of every vehicle.



Tri-level railway cars used to transport vehicles saved 125,481 gallons of diesel fuel in 2009.



Distribution of parts in a diesel-electric hybrid truck reduces CO2 emissions by 15% compared to conventional tractor trailers.



In 2009, CO2 emissions were reduced by 3,970 metric tons at two Acura plants.



More than 90% of the RDX parts are made from recyclable materials.



Efficiently utilized shipping crates used for parts distribution save over 704 metric tons of CO2 emissions per year.



Total water used for manufacturing reduced by 128 million gallons in 2010.



All Acura vehicles have been 90% recyclable since 2004.



Repairing and recycling manufacturing pallets kept 136,350 of them out of landfills in 2010.



Receiving our first ULEV rating in 2001, now every Acura is recognized as an ultra-low emissions vehicle.



A parts consolidation center at the Marysville plant reduces CO2 emissions from parts transportation by 90 metric tons per year.



In 2009, the Marysville plant earned the EPA's ENERGY STAR for superior energy efficiency.



Landfill waste from manufacturing activity reduced by 65% from the previous year.



Corrugated packaging materials were reduced by nearly 1.5 million pounds in the last two years.



"Intelligent" paint booths reduce CO2 emissions from painting operations by as much as 25%.



All Acura manufacturing plants will achieve zero waste-to-landfill by April 2011.



Alliston and Marysville plants saved more than 840,000 cubic meters of natural gas in 2009.



Reduced use of packaging materials saved more than 635,000 pounds of wood in 2009.

ENVIRONMENT

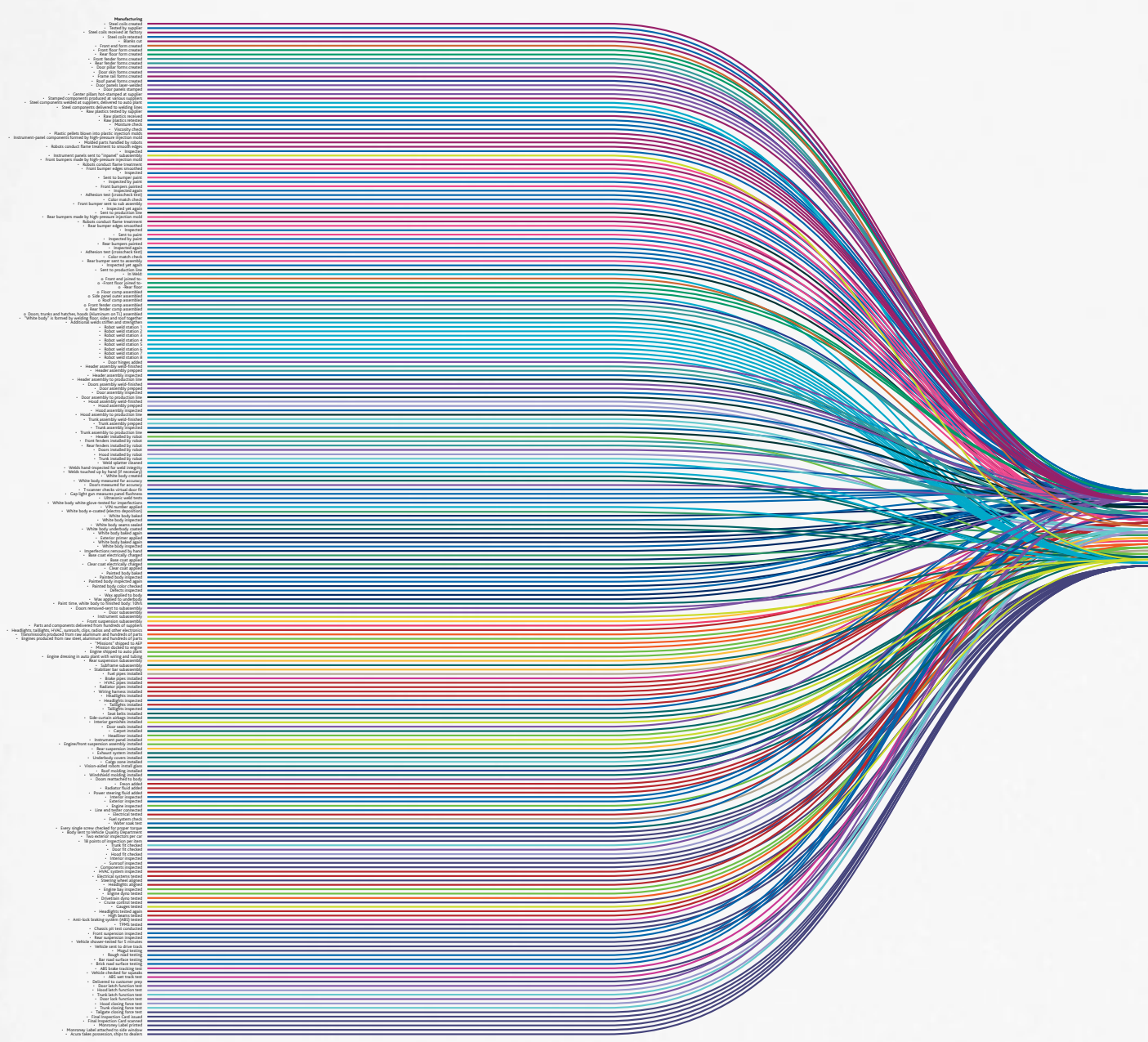
Waste and Pollution Reduction



SUBSTANCE AS DEFINED AS A DESIRE TO LEAVE LESS SUBSTANCE BEHIND.

A program to recycle manufacturing pallets is never going to be a top news item. But that doesn't mean it isn't worth doing. While just about every car company is trying to burnish their "green" credentials, Acura has spent the last decade changing the way we make our vehicles, drastically reducing the amount of waste and pollutants. When it comes to managing our environmental impact, we're always looking for more ways to do less.

CLICK TO VIEW A MODEL BROCHURE:



**THOUSANDS OF STEPS.
ONE DIRECTION.**



Just as an Acura is a perfectly synchronized orchestration of parts, so too is the process by which it is made. And as complex as this chart appears, it is merely the last stage in that process.

Before the first roll of sheet metal enters the factory, our engineers are working with our designers to ensure their ideas survive. For example, the TL designers felt the thin strips of metal that extend above the taillights were crucial components in giving the vehicle its aggressive looks. To make them a reality, the engineers had to invent a new kind of conveyor belt, one that wouldn't deform the parts as they cooled. Similar measures throughout the manufacturing process help ensure that every Acura is everything we say it is.

ACURA BRAND BROCHURE

2011 ZDX

2011 MDX

2011 RDX

2011 RL

2012 TL

2011 TSX

PLEASE MAKE A SELECTION.



2011 ACURA BRAND

©2011 Acura. Acura, CL, Integra, Integra Type-R, Legend, MDX, NSX, RDX, RL, RSX, TL, TSX, Vigor, ZDX, the stylized "A" logo, AcuraLink, AcuraLink Real-Time Traffic and Weather, Acura Navigation System with Voice Recognition, Advanced Compatibility Engineering (ACE), Collision Mitigation Braking System (CMBS), HandsFreeLink, Song By Voice, Super Handling All-Wheel Drive (SH-AWD), Vehicle Stability Assist (VSA), VTEC and i-VTEC are trademarks of Honda Motor Co., Ltd. Covered by patent rights issued and/or pending. Specifications, features, illustrations and equipment shown in this catalog are based upon the latest available information at the time of publication. Although descriptions are believed to be correct, accuracy cannot be guaranteed. All images contained herein are either owned by American Honda Motor Co., Inc., or used under a valid license. It is a violation of federal law to reproduce these images without express written permission from American Honda Motor Co., Inc., or the individual copyright owner of such images. American Honda Motor Co., Inc., reserves the right to make changes at any time, without notice or obligation, in colors, specifications, accessories, materials and models. The *Bluetooth*® word mark and logos are owned by the *Bluetooth* SIG, Inc., and any use of such marks by Honda Motor Co., Ltd., is under license. ELS Surround is a registered trademark of Panasonic Corporation of North America. All rights reserved. GRAMMY is a registered trademark of The Recording Academy and is used under license. iPod is a registered trademark of Apple Inc. The XM name, XM NavTraffic® and XM NavWeather™ are trademarks of Sirius XM Radio Inc. and its subsidiaries. Zagat Survey® is a registered trademark of Zagat Survey, LLC. Make an intelligent decision. Fasten your seat belt. ¹ Government star ratings are part of the National Highway Traffic Safety Administration's (NHTSA's) New Car Assessment Program (www.safercar.gov). Models tested with standard side-impact airbags (SABs). ² Visit www.handsfreelink.com for a list of compatible phones and available features. ³ Navigation system available in the 48 contiguous United States and Hawaii. MDX, TL, TSX, and ZDX coverage includes Alaska. See your local Acura dealer for current navigation system area coverage. ⁴ The USB Audio Interface is used for direct connection to and control of some current digital audio players and other USB devices that contain MP3, WMA, or AAC music files. Some USB devices with security software and digital rights-protected files may not work. Please see your dealer for details on compatibility. ⁵ AcuraLink Real-Time Traffic and Weather™ require monthly premium XM NavTraffic® and NavWeather™ subscriptions. Navigation-equipped vehicles include 90 days of XM NavTraffic and NavWeather service. XM NavTraffic is only available in select markets.



2011 ZDX



ZDX

*PROOF THAT STEEL, ALUMINUM, LEATHER AND GLASS
CAN ALL HAVE MAGNETIC PROPERTIES.*

[CLICK TO VIEW A MODEL BROCHURE:](#)

A silver car is parked in a dense forest of tall, thin trees. The car is positioned in the lower right quadrant of the image, facing left. The forest floor is covered in brown leaves and pine needles. The trees are tall and thin, with green foliage at the top. The lighting is soft, suggesting a shaded forest environment.

INSPIRED BY MORE
INSPIRED SOURCES.

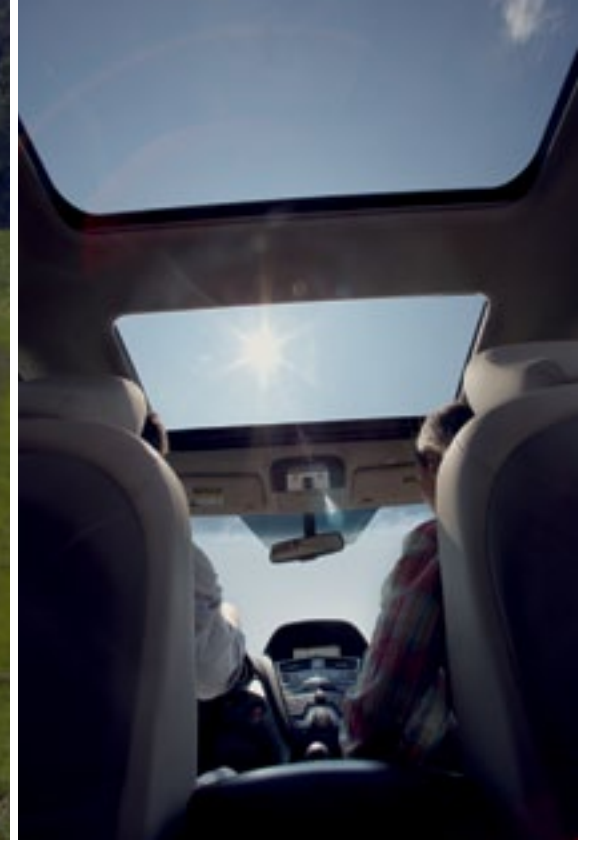
I

With the goal of creating an entirely new aesthetic feel, the ZDX designers went beyond the world of automotive luxury for inspiration. They found it in the sweeping roofline of a Japanese sports arena. In the combining of different materials and textures at a San Francisco luxury hotel. Even in the stained oak barrels found at a Napa winery. One drive beneath a beautiful blue sky is all you'll need to figure out what inspired the vehicle's panoramic glass roof.

CLICK TO VIEW A MODEL BROCHURE:



Keeping the negative effects of sunlight at bay are a power-retractable UV sunshade as well as the available GPS-linked climate control, which tracks the position of the vehicle in relation to the sun and automatically compensates for the sun's radiant heat.



II

While the ZDX may have plenty of pulse-quicken power, the first priority of Acura engineers was to ensure that it is delivered as efficiently as possible. Utilizing Acura's signature VTEC® technology, the 3.7-liter, 300-hp engine employs two separate cam profiles to optimize both low-end torque and high-end horsepower. Super Handling All-Wheel Drive™ (SH-AWD®) helps ensure that none of that potential is wasted. Sensing where extra torque is needed, this system distributes power between the front and rear wheels, and in turns, can even send 100% of available rear power to the outside wheel and increase its rotation speed for tighter cornering.

III

Technology is at its best when it's easy to use. With the ability to recognize hundreds of commands, available voice recognition lets you speak naturally, giving you greater control over many of the vehicle's features, including the Bluetooth® HandsFreeLink®¹ the available navigation system with its continuously updated traffic and weather information,² and many functions of the available Acura/ELS Surround® Premium Audio System. Song by Voice® even lets you call up a song by saying its title or artist.



THOROUGHLY REFINED.
BUT WITH EDGE INTACT.

[CLICK TO VIEW A MODEL BROCHURE:](#)



IV

With the well-being of passengers a top priority, safety is anything but an afterthought. The chassis features Acura's Advanced Compatibility Engineering™ (ACE™) body structure, which uses a connected network of structural elements to help direct frontal crash energy around the passenger compartment. Systems designed to keep you out of harm's way include Vehicle Stability Assist™ (VSA®), which can sense a potential loss of traction and take action to help the driver stay in control.



CLICK TO VIEW A MODEL BROCHURE:



V

*The Acura ZDX represents a benchmark not only in style, but also in substance. This is especially true with the available Advance Package. This includes the Integrated Dynamics System (IDS), which continually adjusts the ride quality based on driving conditions. In addition, the blind spot information system (BSI) and Adaptive Cruise Control (ACC) help keep an eye out for those sharing the road, as does the Collision Mitigation Braking System™ (CMBS™), which can automatically apply the brakes and tighten seat belts in anticipation of an imminent collision.**

Specifically designed for the weekend escape, the ZDX offers plenty of room up front and in back. Under-floor storage and removable side panels, as well as loop carpet, give the cargo area a stylish-yet-functional appearance. With the split rear seats up, capacity is 27.5 cu ft, plenty of room for your golf bags. Fold the seats down and you've got 57.3 cu ft at your disposal.

*Depending on the circumstances, CMBS may not go through all of the alert stages before initiating the last stage (of collision mitigation).



Acura reminds you to properly secure items in the cargo area.

CLICK TO VIEW A MODEL BROCHURE:



Acura / ZDX / LIFE'S COMPROMISES CAN COME IN MANY FORMS. NONE OF WHICH LOOK LIKE THIS.



The 2011 Acura ZDX pictured in front of the historic Carolina Hotel at Pinehurst Resort. Find out for yourself why Pinehurst is so often called upon to be golf's world stage. As the setting for both the 1999 and 2005 U.S. Open Championships, it has seen its share of memorable moments. More are sure to happen as Pinehurst hosts both the 2014 U.S. Open and 2014 U.S. Women's Open Championship. Acura has been the preferred vehicle of Pinehurst since 2005.

OWNER BENEFITS

When you purchase a vehicle with the exceptional quality of an Acura, you expect service and support to be of the same caliber. After all, a premium automobile is only part of the ownership experience. With Acura you also get a commitment. To personalized care. To attentive service. This commitment is apparent the moment you first enter an Acura dealership and for years down the road. It comes from a belief that every aspect of owning an Acura should be an enjoyable and rewarding experience.

Warranty³ All Acura vehicles and Acura accessories installed by the dealer at the time of vehicle purchase have a 4-year/50,000-mile limited warranty. Acura vehicles are also covered by a 6-year/70,000-mile limited powertrain warranty. In addition, outer-body rust-through is covered on all Acura vehicles by a 5-year/unlimited-mile limited warranty.

Acura Financial Services⁴ Whether you're buying or leasing, this program can assist you with the process.

Acura Care[®] Comprehensive vehicle and travel protection beyond the initial warranty period enhances peace of mind. See your Acura dealer for features and benefits available with this program.



Total Luxury Care[®] (TLC[®])⁵ As an Acura owner, you'll enjoy services like Trip-Interruption benefits, a 24-hour Roadside Assistance program and Acura Concierge,[™] which offers help in an emergency or when you're planning a trip.

1-800-to-Acura Operators are available 24 hours a day to help get answers to your Acura questions.

My Acura Your complimentary MyAcura personalized Web site provides the most current information about your vehicle, gives you tips on how to care for your Acura and lets you schedule service appointments online.

Accessories

When it comes to personalizing, choose Acura genuine accessories that are crafted to the same strict levels of quality as the rest of your ZDX. See your Acura dealer for a complete list of accessories or go to acura.com.

acura.com

Visit us online for the latest specifications, MSRPs and special offers. You can also apply for financing or even request a price quote from an Internet-certified Acura dealer.

PERFORMANCE

300-hp, 3.7-liter, 24-valve SOHC VTEC[®] V-6 engine / 6-speed automatic transmission with Sequential SportShift paddle shifters / Super Handling All-Wheel Drive[™] (SH-AWD[®]) / 4-wheel independent suspension: MacPherson strut front / multi-link rear / Torque-sensing, variable power-assisted rack-and-pinion steering / 19-inch aluminum-alloy wheels with P255/50 R19 103H all-season tires

SAFETY

Advanced Compatibility Engineering[™] (ACE[™]) body structure / Vehicle Stability Assist[™] (VSA[®]) with traction control / 4-wheel anti-lock braking system (ABS) with Electronic Brake Distribution (EBD) and Brake Assist / Dual-stage, multiple-threshold front, front side and side curtain airbags (SRS) with rollover sensor / Active front head restraints

STANDARD ZDX FEATURES

Dual-zone, dual-mode adaptive climate control system / Remote entry system with Acura personalized settings / Bluetooth[®] HandsFreeLink[®] wireless telephone interface¹ / Active Sound Control / Remote-linked power-operated tailgate / Sport seats with leather-trimmed interior / Premium leather instrument panel, console and door trim / Driver's and front passenger's heated, power-adjustable seats / 60/40 split flat-folding second-row seat / Acura 266-watt Premium Sound System with XM[®] Radio,⁶ 6-disc in-dash CD changer and 8 speakers, including 8-inch subwoofer / USB Audio Interface with iPod[®] integration⁷ / Bluetooth Audio / Power panoramic multi-panel glass roof with tilt feature and power sunshade / Automatic dimming rearview mirror with rearview camera display / Auto-on/off bi-xenon high-intensity discharge (HID) headlights / Fog lights

TECHNOLOGY PACKAGE (Adds to or replaces standard ZDX features)

Acura Navigation System with Voice Recognition,[™] Traffic Rerouting[™] and multi-view rear camera / Acura/ELS Surround[®] 435-watt Premium Audio System with 10 speakers, hard disk drive (HDD) media storage, in-dash CD, DVD-Audio player and Dolby[®] Pro Logic[®] II / AcuraLink Real-Time Traffic and Weather^{™2} / Keyless Access System with smart entry, pushbutton ignition and Acura personalized settings / GPS-linked, solar-sensing, dual-zone, dual-mode adaptive climate control system / Song By Voice[®] / Perforated Milano premium leather-trimmed interior

ADVANCE PACKAGE (Includes Technology Package)

Integrated Dynamics System (IDS) / Collision Mitigation Braking System[™] (CMBS[™]) / Adaptive Cruise Control (ACC) / Blind spot information system (BSI) / Exclusive suede-like headliner and trim / Ventilated front seats / Ambient inner door-handle lighting

SPECIFICATIONS

Estimated Fuel Mileage[®] (City/Highway/Combined): 16 | 23 | 19 / Fuel Tank Capacity: 21.0 U.S. gallons / Required Fuel:⁹ Premium unleaded 91 octane / Curb Weight: 4410 lbs / Curb Weight with Technology Package: 4419 lbs / Curb Weight with Advance Package: 4452 lbs / Headroom (Front Row/Second Row): 38.0 in | 35.3 in / Legroom (Front Row/Second Row): 42.2 in | 35.7 in / Shoulder Room (Front Row/Second Row): 59.7 in | 55.4 in / Hiproom (Front Row/Second Row): 57.3 in | 55.3 in / Passenger Volume: 95.8 cu ft / Maximum Cargo Volume (Behind First Row/Second Row): 57.3 cu ft | 27.5 cu ft / Wheelbase: 108.3 in / Length: 192.4 in / Height: 62.8 in / Width: 78.5 in

ZDX COLORS

[CLICK TO VIEW A MODEL BROCHURE:](#)

[Click here to build your own ZDX.](#)

ACURA BRAND BROCHURE

2011 ZDX

2011 MDX

2011 RDX

2011 RL

2012 TL

2011 TSX

PLEASE MAKE A SELECTION.



2011 ZDX

©2011 Acura. Acura, ZDX, the stylized "A" logo, Acura Care, Acura Concierge, AcuraLink, AcuraLink Real-Time Traffic and Weather, Acura Navigation System with Voice Recognition, Advanced Compatibility Engineering (ACE), Collision Mitigation Braking System (CMBS), HandsFreeLink, Song By Voice, Super Handling All-Wheel Drive (SH-AWD), Total Luxury Care (TLC), Traffic Rerouting, Vehicle Stability Assist (VSA), and VTEC are trademarks of Honda Motor Co., Ltd. Covered by patent rights issued and/or pending. Specifications, features, illustrations and equipment shown in this catalog are based upon the latest available information at the time of publication. Although descriptions are believed to be correct, accuracy cannot be guaranteed. All images contained herein are either owned by American Honda Motor Co., Inc., or used under a valid license. It is a violation of federal law to reproduce these images without express written permission from American Honda Motor Co., Inc., or the individual copyright owner of such images. American Honda Motor Co., Inc., reserves the right to make changes at any time, without notice or obligation, in colors, specifications, accessories, materials and models. The *Bluetooth*® word mark and logos are owned by the *Bluetooth* SIG, Inc., and any use of such marks by Honda Motor Co., Ltd., is under license. Dolby, Pro Logic, and the double-D symbol are registered trademarks of Dolby Laboratories. ELS Surround is a registered trademark of Panasonic Corporation of North America. All rights reserved. iPod is a registered trademark of Apple Inc. The XM name, XM NavTraffic® and XM NavWeather™ are trademarks of Sirius XM Radio Inc. and its subsidiaries. Make an intelligent decision. Fasten your seat belt. ¹Visit www.handsfreelink.com for a list of compatible phones and available features. ²AcuraLink Real-Time Traffic and Weather™ require monthly premium XM NavTraffic® and NavWeather™ subscriptions. Navigation-equipped vehicles include 90 days of XM NavTraffic and NavWeather service. XM NavTraffic is only available in select markets. ³Ordinary maintenance items or adjustments, parts subject to normal wear and replacement, and certain other items are excluded. See your Acura dealer for the terms and conditions of limited warranties. ⁴Acura Financial Services is a DBA of American Honda Finance Corporation. ⁵See your local dealer for details about Total Luxury Care (TLC) Roadside Assistance and Concierge Service. ⁶XM services require a subscription after 90-day trial period. Subscriptions governed by SiriusXM Customer Agreement; see www.siriusxm.com. If you decide to continue your XM service at the end of your complimentary trial, the plan you choose will automatically be renewed and you will be billed at then-current rates until you call XM at 1-800-967-2346 to cancel. Fees and programming subject to change. Available only to those at least 18 years of age in the 48 contiguous United States and D.C. ©2011 Sirius XM Radio Inc. Sirius, XM and all related marks and logos are trademarks of Sirius XM Radio Inc. and its subsidiaries. ⁷The USB Audio Interface is used for direct connection to and control of some current digital audio players and other USB devices that contain MP3, WMA, or AAC music files. Some USB devices with security software and digital rights-protected files may not work. Please see your dealer for details on compatibility. ⁸Based on 2011 EPA mileage estimates. Use for comparison purposes only. Do not compare to models before 2008. Your actual mileage will vary depending on how you drive and maintain your vehicle. ⁹Using gasoline with an octane lower than 91 may cause damage to the engine. Please consult your dealer for details.



MDX

*A METICULOUSLY ENGINEERED
LOOPHOLE IN THE LAW OF PHYSICS.*

2011

MDX



CLICK TO VIEW A MODEL BROCHURE:



WITH ITS ADVANCED PERFORMANCE, COMFORT AND ENTERTAINMENT TECHNOLOGIES, THE MDX GIVES DESTINATIONS A LOT TO LIVE UP TO.

I

There's nothing quite like a getaway with family or friends. All it takes is a worthy destination and, of course, the means for getting there. The MDX is designed to be the ideal traveling companion, taking on every demand and accommodating any whim.

Honed at Germany's legendary Nürburgring, the MDX's performance characteristics are not what you'd expect in a vehicle that seats seven. Through the track's torturous circuit, systems like Super Handling All-Wheel Drive™ (SH-AWD®), front strut and rear multi-link suspensions and the torque-sensing power steering were evaluated, tuned and tweaked to deliver a driving experience that's every bit as thrilling as it is confidence-inspiring.

A towing capacity of 5,000 lbs. means you can bring along even more of your fun.¹



[CLICK TO VIEW A MODEL BROCHURE:](#)



300

HORSEPOWER ENGINE



II

Take command of the vehicle's 300-hp, 3.7-liter engine, and an exhilarating adventure begins the moment you hit the road. Acura's signature VTEC® technology feeds air into the engine at the perfect rate for combustion, delivering a satisfying jolt off the line as well as power in reserve at higher speeds. Harnessing it is a sophisticated 6-speed Sequential SportShift automatic. Paddle shifters let enthusiasts explore the limits of the engine's potential.

From highways to back roads, wherever your travels take you, the MDX is ready. The vehicle's available Active Damper System reacts to the demands of the road with the help of a remarkable substance called magneto-rheological fluid. It can change the MDX's ride from soft and luxurious to tight and sporty in as little as 5 milliseconds.

CLICK TO VIEW A MODEL BROCHURE:



60

GIGABYTE HARD DISK DRIVE (HDD)



III

Luxurious accommodations aren't only waiting at the end of the road. Inside the MDX, supple leather adorns seats, steering wheel and other areas of contact. Front seats are bolstered to provide lateral support for quick cornering. Ten-way power adjustments² on the driver's side and 8-way on the passenger's side provide personalized comfort. Both front seats offer heating, and with the Advance Package, the increased comfort of seat ventilation.

Additional conveniences include an available blind spot information system (BSI), which can detect vehicles, both large and small, that may be out of the driver's field of vision.*

No matter how far off the beaten path you venture, the available Acura Navigation System with Voice Recognition™ can make you feel like a local. A database containing over 7,000,000 points of interest,³ as well as Zagat Survey® restaurant reviews, means you're not at a loss for options. In addition, available continuously updated weather and traffic information⁴ help make getting there as enjoyable as possible.

*The system is not a substitute for your own visual assessment before changing lanes; system accuracy will vary based on weather, size of object and speed.

CLICK TO VIEW A MODEL BROCHURE:



Acura reminds you to properly secure items in the cargo area.



IV

The vehicle's long wheelbase and wide shoulders ensure plenty of space, even with all seven seats occupied. And if cargo takes precedence over passengers, the 60/40 split second-row and 50/50 split third-row seats fold down to give you up to 83.5 cubic feet of space to work with.

Sound, of course, is a vital element to any rich experience. Developed with the help of six-time GRAMMY® Award-winning recording engineer and producer Elliot Scheiner, the available Acura/ELS Surround® Premium Audio system was designed to take into account the specific contours of the MDX cabin to reproduce the depth and clarity of the original studio recording. Song By Voice® technology lets you access music you have stored on the vehicle's hard disk drive (HDD) or on your connected iPod®⁵ by simply voicing a preference.

[CLICK TO VIEW A MODEL BROCHURE:](#)

SH-AWD

SUPER HANDLING ALL-WHEEL DRIVE

v

Travel is said to broaden the mind. Take to the road in an MDX and that includes notions of the kind of moves an SUV is capable of. Accelerate through a curve and the vehicle's Super Handling All-Wheel Drive can send up to 100% of available rear power to the outside wheel and increase its rotation speed, dramatically increasing cornering ability. If road conditions are less than ideal, the system can sense if any of the wheels start to lose traction and send power to those with more grip. It all adds up to a level of crisp handling and thrilling response unmatched by conventional all-wheel drive.

[CLICK TO VIEW A MODEL BROCHURE:](#)



VI

The available rear entertainment system boasts a 9-inch screen, a removable remote, and the ability to connect a game console. The Entertainment Package even lets rear passengers select their own music to listen to through included wireless headphones.

And in addition to their own climate controls, the second-row outboard seats also feature two-level heating when you opt for the available Entertainment Package.



[CLICK TO VIEW A MODEL BROCHURE:](#)

The 2011 Acura MDX.

*ABOUT AS FAR AWAY AS YOU CAN GET
FROM THE WORLD OF COMPROMISE.*



OWNER BENEFITS

When you purchase a vehicle with the exceptional quality of an Acura, you expect service and support to be of the same caliber. After all, a premium automobile is only part of the ownership experience. With Acura you also get a commitment. To personalized care. To attentive service. This commitment is apparent the moment you first enter an Acura dealership and for years down the road. It comes from a belief that every aspect of owning an Acura should be an enjoyable and rewarding experience.

Warranty⁶ All Acura vehicles and Acura accessories installed by the dealer at the time of vehicle purchase have a 4-year/50,000-mile limited warranty. Acura vehicles are also covered by a 6-year/70,000-mile limited powertrain warranty. In addition, outer-body rust-through is covered on all Acura vehicles by a 5-year/unlimited-mile limited warranty.

Acura Financial Services⁷ Whether you're buying or leasing, this program can assist you with the process.

Acura Care[®] Comprehensive vehicle and travel protection beyond the initial warranty period enhances peace of mind. See your Acura dealer for features and benefits available with this program.



Total Luxury Care[®] (TLC)[®] As an Acura owner, you'll enjoy services like Trip-Interruption benefits, a 24-hour Roadside Assistance program and Acura Concierge,[™] which offers help in an emergency or when you're planning a trip.

1-800-to-Acura Operators are available 24 hours a day to help get answers to your Acura questions.

My Acura Your complimentary MyAcura personalized Web site provides the most current information about your vehicle, gives you tips on how to care for your Acura and lets you schedule service appointments online.

Accessories

When it comes to personalizing, choose Acura genuine accessories that are crafted to the same strict levels of quality as the rest of your MDX. See your Acura dealer for a complete list of accessories or go to acura.com.

acura.com

Visit us online for the latest specifications, MSRPs and special offers. You can also apply for financing or even request a price quote from an Internet-certified Acura dealer.

PERFORMANCE

300-hp, 3.7-liter, 24-valve, SOHC VTEC[®] V-6 engine / 6-speed automatic transmission with Sequential SportShift paddle shifters / Super Handling All-Wheel Drive[™] (SH-AWD[®]) / 4-wheel independent suspension: MacPherson strut front/multi-link rear / Torque-sensing, variable power-assisted rack-and-pinion steering / 18-inch aluminum-alloy wheels, P255/55 R18 104H all-season tires

SAFETY

Advanced Compatibility Engineering[™] (ACE[™]) body structure / Vehicle Stability Assist[™] (VSA[®]) with traction control / 4-wheel anti-lock braking system (ABS) with Electronic Brake Distribution (EBD) and Brake Assist / Dual-stage, multiple-threshold front airbags (SRS), front side airbags and side curtain airbags with rollover sensor / Active front head restraints

STANDARD MDX FEATURES

Tri-zone, front/rear synchronized automatic climate control system / Remote entry system with Acura personalized settings / Bluetooth[®] HandsFreeLink[®] wireless telephone interface[®] / Electronic tilt and telescopic steering column / Remote-linked power-operated tailgate / Leather-trimmed interior with 7-passenger seating capability / Driver's and front passenger's heated, power-adjustable seats / 60/40 reclining, split folding second-row seat / 50/50 split folding third-row seat / Acura 253-watt Premium Sound System with XM[®] Radio,¹⁰ 6-disc in-dash CD changer and 8 speakers, including 8-inch subwoofer / Power moonroof with tilt feature / Automatic dimming rearview mirror with rearview camera display / Auto-on/off xenon high-intensity discharge (HID) headlights / Fog lights

TECHNOLOGY PACKAGE (Adds to or replaces standard MDX features)

Acura Navigation System with Voice Recognition,[™] Traffic Rerouting,[™] and multi-view rear camera / Acura/ELS Surround[®] 410-watt Premium Audio System with 10 speakers, hard disk drive (HDD) media storage, in-dash CD, DVD-Audio player and Dolby[®] Pro Logic[®] II / AcuraLink Real-Time Traffic and Weather^{™3} / GPS-linked, solar-sensing, tri-zone automatic climate control system / Song By Voice[®] / USB Audio Interface with iPod[®] integration⁵ / Bluetooth[®] Audio / Milano Premium Leather-trimmed interior

ADVANCE PACKAGE (Includes Technology Package)

Active Damper System sport suspension / Collision Mitigation Braking System[™] (CMBS[™]) / Adaptive Cruise Control (ACC) / Blind spot information system (BSI) / Exclusive 19-inch alloy wheels with P255/50 R19 103H all-season tires / Auto-leveling xenon high-intensity discharge (HID) headlights / Heated and ventilated front seats / Perforated Milano Premium Leather-trimmed interior with contrast stitching

ENTERTAINMENT PACKAGE (Available with Technology or Advance Packages)

Acura DVD Rear Entertainment System with motorized full VGA screen / Heated 2nd-row seats (outboard positions) / 115-volt power outlet (front center console)

SPECIFICATIONS

Estimated Fuel Mileage¹¹ (City/Highway/Combined): 16 | 21 | 18 / Fuel Tank Capacity: 21.0 U.S. gallons / Required Fuel:¹² Premium unleaded 91 octane / Curb Weight: 4550 lbs / Curb Weight with Technology Package: 4550 lbs / Curb Weight with Technology and Entertainment Packages: 4568 lbs / Curb Weight with Advance Package: 4601 lbs / Curb Weight with Advance and Entertainment Packages: 4628 lbs / Headroom (Front Row/Second Row/Third Row): 39.2 in | 38.6 in | 35.8 in / Legroom (Front Row/Second Row/Third Row): 41.2 in | 38.7 in | 28.7 in / Shoulder Room (Front Row/Second Row/Third Row) 61.6 in | 61.5 in | 57.1 in / Hiproom (Front Row/Second Row/Third Row): 59.0 in | 59.1 in | 42.9 in / Passenger Volume: 141.8 cu ft / Cargo Volume (Behind First Row/Second Row/Third Row): 83.5 cu ft | 42.9 cu ft | 15.0 cu ft / Wheelbase: 108.3 in / Length: 191.6 in / Height: 68.2 in / Width: 78.5 in / Towing Capacity: 5000 lbs with 500-lb tongue weight⁴

MDX COLORS

CLICK TO VIEW A MODEL BROCHURE:

Click here to build your own MDX.

ACURA BRAND BROCHURE

2011 ZDX

2011 MDX

2011 RDX

2011 RL

2012 TL

2011 TSX

PLEASE MAKE A SELECTION.



2011 MDX
©2011 Acura. Acura, MDX, the stylized "A" logo, Acura Care, Acura Concierge, AcuraLink, AcuraLink Real-Time Traffic and Weather, Acura Navigation System with Voice Recognition, Advanced Compatibility Engineering (ACE), Collision Mitigation Braking System (CMBS), HandsFreeLink, Song By Voice, Super Handling All-Wheel Drive (SH-AWD), Total Luxury Care (TLC), Traffic Rerouting, Vehicle Stability Assist (VSA) and VTEC are trademarks of Honda Motor Co., Ltd. Covered by patent rights issued and/or pending. Acura reserves the right to limit TLC services or reimbursements to any owner or driver when, in the judgment of Acura, the claims become excessive in frequency or type of occurrence. Specifications, features, illustrations and equipment shown in this catalog are based upon the latest available information at the time of publication. Although descriptions are believed to be correct, accuracy cannot be guaranteed. All images contained herein are either owned by American Honda Motor Co., Inc., or used under a valid license. It is a violation of federal law to reproduce these images without express written permission from American Honda Motor Co., Inc., or the individual copyright owner of such images. American Honda Motor Co., Inc., reserves the right to make changes at any time, without notice or obligation, in colors, specifications, accessories, materials and models. The *Bluetooth*® word mark and logos are owned by the *Bluetooth* SIG, Inc., and any use of such marks by Honda Motor Co., Ltd., is under license. Dolby, Pro Logic and the double-D symbol are registered trademarks of Dolby Laboratories. ELS Surround is a registered trademark of Panasonic Corporation of North America. All rights reserved. GRAMMY is a registered trademark of The Recording Academy and is used under license. iPod is a registered trademark of Apple Inc. The XM name, XM NavTraffic® and XM NavWeather™ are trademarks of Sirius XM Radio Inc. and its subsidiaries. Zagat Survey® is a registered trademark of Zagat Survey, LLC. Make an intelligent decision. Fasten your seat belt. ¹Maximum towing capacity is 5,000 lbs. Towing requires the addition of the Acura accessory towing hitch, hitch ball and wiring harness from your Acura dealer. Please see your Acura dealer for details. ²Eight-way power seat with 2-way power lumbar support. Power lumbar support previously listed separately. ³Some roads unverified. See your Acura dealer for details. ⁴AcuraLink Real-Time Traffic and Weather™ require monthly premium XM NavTraffic® and NavWeather™ subscriptions. Navigation-equipped MDX includes 90 days of XM NavTraffic and NavWeather service. XM NavTraffic is only available in select markets. ⁵The USB Audio Interface is used for direct connection to and control of some current digital audio players and other USB devices that contain MP3, WMA, or AAC music files. Some USB devices with security software and digital rights-protected files may not work. Please see your dealer for details on compatibility. ⁶Ordinary maintenance items or adjustments, parts subject to normal wear and replacement, and certain other items are excluded. See your Acura dealer for the terms and conditions of limited warranties. ⁷Acura Financial Services is a DBA of American Honda Finance Corporation. ⁸See your local dealer for details about Total Luxury Care (TLC) Roadside Assistance and Concierge service. ⁹Visit www.handsfreelink.com for a list of compatible phones and available features. ¹⁰XM services require a subscription after 90-day trial period. Subscriptions governed by SiriusXM Customer Agreement; see www.siriusxm.com. If you decide to continue your XM service at the end of your complimentary trial, the plan you choose will automatically be renewed and you will be billed at then-current rates until you call XM at 1-800-967-2346 to cancel. Fees and programming subject to change. Available only to those at least 18 years of age in the 48 contiguous United States and D.C. ©2011 Sirius XM Radio Inc. Sirius, XM and all related marks and logos are trademarks of Sirius XM Radio Inc. and its subsidiaries. ¹¹Based on 2011 EPA mileage estimates. Use for comparison purposes only. Do not compare to models before 2008. Your actual mileage will vary depending on how you drive and maintain your vehicle. ¹²Using gasoline with an octane lower than 91 may cause damage to the engine. Please consult your dealer for details.



RDX

*AN INSPIRED COMBINATION
OF CARGO AND TURBO.*

2011

RDX



WHEN JUDGING AN SUV, THERE ARE TWO THINGS TO KEEP IN MIND: WHAT'S IN BACK AND WHAT'S UP FRONT.

There's nothing like an act of pure spontaneity. It only requires an open mind and, of course, the means for carrying it out. With over 60 cubic feet of cargo space behind the front row¹ and a spirited 2.3-liter turbocharged i-VTEC[®] engine under the hood, the RDX is ideally equipped to satisfy any whim.

The cabin of the RDX is a direct expression of the vehicle's sports-car lineage. It's an environment that is both modern and inviting. The Acura personalized settings system welcomes you aboard by adjusting the driver's seat and outside mirrors to your individual preferences. Heated front seats and dual-zone climate control further provide for your ideal comfort. With the Technology Package, the vehicle's GPS capabilities will even track the sun's position and adjust the climate control system accordingly. It all adds to an atmosphere designed to keep you more at ease and, ultimately, more in control.

The available Acura/ELS Surround[®] Premium Audio System was created with the help of GRAMMY[®] Award-winning recording engineer and producer Elliot Scheiner. Taking into account everything from the placement of the speakers to the volume and contours of the vehicle's interior, the system is designed to recreate the experience of the original studio recording. Both the 10-speaker Acura/ELS system and the 7-speaker standard audio system feature a 6-disc in-dash CD changer, XM[®] Radio² and USB Audio Interface³ for personal music players.



CLICK TO VIEW A MODEL BROCHURE:



Acura reminds you to properly secure items in the cargo area.

60.6

CUBIC FEET OF CARGO SPACE

I

The Advanced Compatibility Engineering™ (ACE™) body structure doesn't simply absorb crash energy. Using a connected network of structural elements, it also helps redirect frontal crash energy around the passenger compartment. In addition, active safety technologies like Vehicle Stability Assist™ (VSA®), Brake Assist and Electronic Brake Distribution (EBD) are designed to help keep you out of harm's way.



CLICK TO VIEW A MODEL BROCHURE:



Low-Speed Range – Unlike most turbochargers, our Variable Flow Turbo uses a valve to direct exhaust through a smaller passage. This spins the turbo faster and pumps air into the engine at a higher velocity – quickly increasing its power.

High-Speed Range – At higher speeds, the variable control valve introduces exhaust into both passages. This gives the engine more power when passing or accelerating onto freeways.



II

Both the front-wheel-drive RDX and the available SH-AWD model take full advantage of a strong foundation. The extensive use of high-tensile steel in key areas of the chassis gives the RDX rigidity and helps lower the center of gravity for more nimble cornering. In addition, a 4-wheel independent suspension system is tuned to provide a taut response, helping to give the RDX the kind of moves that contradict its SUV classification.

The vehicle's available Super Handling All-Wheel Drive™ (SH-AWD®) not only reacts to wheel slippage, but it's also an active participant in the delivery of precise handling. When accelerating through a turn, the system can send up to 100% of rear power to the outside wheel, dramatically increasing turning force. The results are an enhanced sense of stability, neutral steering and, ultimately, more thrilling performance.

CLICK TO VIEW A MODEL BROCHURE:

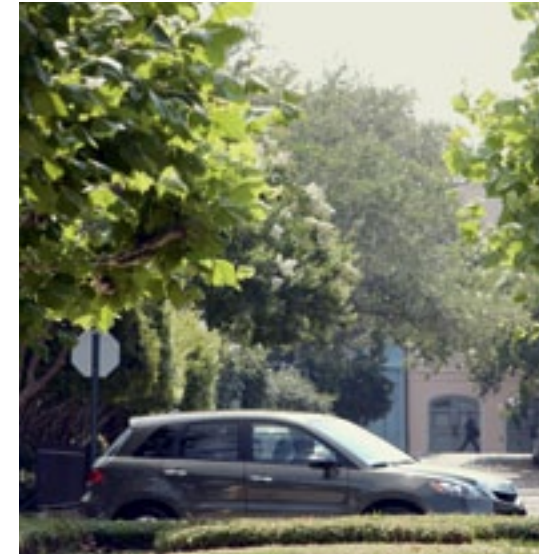
240

HORSEPOWER TURBOCHARGED ENGINE

III

The 240-hp engine powering the RDX is designed to go faster, faster. In addition to a variable flow turbocharger, it also benefits from Acura's exclusive i-VTEC® technology. By micromanaging the engine's valve openings, this system generates a steady delivery of power. You'll feel it off the line as you accelerate with authority and at higher speeds as horsepower continues to climb just when you'd expect it to peak.

Race-inspired paddle shifters are among the meticulously engineered touch points designed to give the driver intuitive control of the vehicle. The leather-wrapped steering wheel provides tactile control of the torque-sensing rack-and-pinion steering system. A quick steering ratio makes for swift response while variable power assist gives you easy turns when parking and a firmer feel at highway speeds.



CLICK TO VIEW A MODEL BROCHURE:



IV

An ideal travel companion is the available Acura Navigation System,⁴ offering not only up-to-the-minute traffic information, but also the weather forecasts for up to three days.⁵ A destination database contains 7,000,000 points of interest,⁶ from the nearest ATM or gas station to local hotels and cultural destinations. The system also provides Zagat Survey[®] restaurant reviews and can even phone for a reservation through your compatible Bluetooth[®]-enabled cell phone.⁷

[CLICK TO VIEW A MODEL BROCHURE:](#)

*The 2011 Acura RDX.
DESIGNED WITH AN ENHANCED
CAPACITY FOR FUN.*



OWNER BENEFITS

When you purchase a vehicle with the exceptional quality of an Acura, you expect service and support to be of the same caliber. After all, a premium automobile is only part of the ownership experience. With Acura you also get a commitment. To personalized care. To attentive service. This commitment is apparent the moment you first enter an Acura dealership and for years down the road. It comes from a belief that every aspect of owning an Acura should be an enjoyable and rewarding experience.

Warranty⁸ All Acura vehicles and Acura accessories installed by the dealer at the time of vehicle purchase have a 4-year/50,000-mile limited warranty. Acura vehicles are also covered by a 6-year/70,000-mile limited powertrain warranty. In addition, outer-body rust-through is covered on all Acura vehicles by a 5-year/unlimited-mile limited warranty.

Acura Financial Services⁹ Whether you're buying or leasing, this program can assist you with the process.

Acura Care[®] Comprehensive vehicle and travel protection beyond the initial warranty period enhances peace of mind. See your Acura dealer for features and benefits available with this program.



Total Luxury Care[®] (TLC[®])¹⁰ As an Acura owner, you'll enjoy services like Trip-Interruption benefits, a 24-hour Roadside Assistance program and Acura Concierge[™] which offers help in an emergency or when you're planning a trip.

1-800-to-Acura Operators are available 24 hours a day to help get answers to your Acura questions.

My Acura Your complimentary MyAcura personalized Web site provides the most current information about your vehicle, gives you tips on how to care for your Acura and lets you schedule service appointments online.

Accessories

When it comes to personalizing, choose Acura genuine accessories that are crafted to the same strict levels of quality as the rest of your RDX. See your Acura dealer for a complete list of accessories or go to acura.com.

acura.com

Visit us online for the latest specifications, MSRPs and special offers. You can also apply for financing or even request a price quote from an Internet-certified Acura dealer.

PERFORMANCE

240-hp, 2.3-liter, 16-valve, DOHC i-VTEC[®] turbocharged 4-cylinder engine / 5-speed automatic transmission with Sequential SportShift paddle shifters / Front-wheel drive (RDX) / Super Handling All-Wheel Drive[™] (SH-AWD[®]) (RDX SH-AWD) / 4-wheel independent suspension: MacPherson strut front/multi-link rear / Torque-sensing, variable power-assisted rack-and-pinion steering / 18-inch aluminum-alloy wheels, P235/55 R18 99V high-performance all-season tires

SAFETY

Advanced Compatibility Engineering[™] (ACE[™]) body structure / Vehicle Stability Assist[™] (VSA[®]) with traction control / 4-wheel anti-lock braking system (ABS) with Electronic Brake Distribution (EBD) and Brake Assist / Dual-stage, multiple-threshold front airbags (SRS), front side airbags and side curtain airbags with rollover sensor / Active front head restraints

STANDARD RDX FEATURES

Dual-zone automatic climate control system / Remote entry system with Acura personalized settings / Bluetooth[®] HandsFreeLink[®] wireless telephone interface⁷ / Tilt and telescopic steering column / Sport seats with perforated leather-trimmed interior / Driver's and front passenger's heated, power-adjustable seats / 60/40 split flat-folding second-row seat / Lockable front center console with dual-level storage / Acura 360-watt Premium Sound System with XM[®] Radio²; 6-disc in-dash CD changer and 7 speakers / USB Audio Interface with iPod[®] integration³ / Bluetooth Audio / Power moonroof with tilt feature / Automatic dimming rearview mirror with rearview camera display / Hard cargo cover lid / Auto-on/off xenon high-intensity discharge (HID) headlights / Fog lights

TECHNOLOGY PACKAGE (Adds to or replaces standard RDX or RDX SH-AWD features)

Acura Navigation System with Voice Recognition[™], Traffic Rerouting[™] and rearview camera⁴ / Acura/ELS Surround[®] 410-watt Premium Audio System with 10 speakers, 6-disc in-dash CD, DVD-Audio changer and Dolby[®] Pro Logic[®] II / AcuraLink Real-Time Traffic and Weather[™] / GPS-linked, solar-sensing, dual-zone automatic climate control system

RDX SPECIFICATIONS

Estimated Fuel Mileage¹¹ (City/Highway/Combined): 19 | 24 | 21 / Fuel Tank Capacity: 18.0 U.S. gallons / Required Fuel:¹² Premium unleaded 91 octane / Curb Weight: 3743 lbs / Curb Weight with Technology Package: 3752 lbs / Headroom (Front/Rear): 38.7 in | 38.3 in / Legroom (Front/Rear): 41.8 in | 37.7 in / Shoulder Room (Front/Rear): 58.2 in | 56.3 in / Hiproom (Front/Rear): 54.4 in | 53.0 in / Passenger Volume: 101.4 cu ft / Cargo Volume¹ (Behind First Row/Second Row): 60.6 cu ft | 27.8 cu ft / Wheelbase: 104.3 in / Length: 182.5 in / Height: 65.2 in / Width: 73.6 in

RDX SH-AWD SPECIFICATIONS

Estimated Fuel Mileage¹¹ (City/Highway/Combined): 17 | 22 | 19 / Fuel Tank Capacity: 18.0 U.S. gallons / Required Fuel:¹² Premium unleaded 91 octane / Curb Weight: 3931 lbs / Curb Weight with Technology Package: 3942 lbs / Headroom (Front/Rear): 38.7 in | 38.3 in / Legroom (Front/Rear): 41.8 in | 37.7 in / Shoulder Room (Front/Rear): 58.2 in | 56.3 in / Hiproom (Front/Rear): 54.4 in | 53.0 in / Passenger Volume: 101.4 cu ft / Cargo Volume¹ (Behind First Row/Second Row): 60.6 cu ft | 27.8 cu ft / Wheelbase: 104.3 in / Length: 182.5 in / Height: 65.2 in / Width: 73.6 in

RDX COLORS

CLICK TO VIEW A MODEL BROCHURE:

Click here to build your own RDX.

ACURA BRAND BROCHURE

2011 ZDX

2011 MDX

2011 RDX

2011 RL

2012 TL

2011 TSX

PLEASE MAKE A SELECTION.



2011 RDX
©2011 Acura. Acura, RDX, the stylized "A" logo, Acura Care, Acura Concierge, AcuraLink, AcuraLink Real-Time Traffic and Weather, Acura Navigation System with Voice Recognition, Advanced Compatibility Engineering (ACE), HandsFreeLink, Super Handling All-Wheel Drive (SH-AWD), Traffic Rerouting, Vehicle Stability Assist (VSA) and i-VTEC are trademarks of Honda Motor Co., Ltd. Covered by patent rights issued and/or pending. Acura reserves the right to limit TLC services or reimbursements to any owner or driver when, in the judgment of Acura, the claims become excessive in frequency or type of occurrence. Specifications, features, illustrations and equipment shown in this catalog are based upon the latest available information at the time of publication. Although descriptions are believed to be correct, accuracy cannot be guaranteed. All images contained herein are either owned by American Honda Motor Co., Inc., or used under a valid license. It is a violation of federal law to reproduce these images without express written permission from American Honda Motor Co., Inc., or the individual copyright owner of such images. American Honda Motor Co., Inc., reserves the right to make changes at any time, without notice or obligation, in colors, specifications, accessories, materials and models. The *Bluetooth*® word mark and logos are owned by the *Bluetooth* SIG, Inc., and any use of such marks by Honda Motor Co., Ltd., is under license. Dolby, Pro Logic and the double-D symbol are registered trademarks of Dolby Laboratories. ELS Surround is a registered trademark of Panasonic Corporation of North America. All rights reserved. GRAMMY is a registered trademark of The Recording Academy and is used under license. iPod is a registered trademark of Apple Inc. The XM name, XM NavTraffic® and XM NavWeather™ are trademarks of Sirius XM Radio Inc. and its subsidiaries. Zagat Survey® is a registered trademark of Zagat Survey, LLC. Make an intelligent decision. Fasten your seat belt. ¹Carrying too much cargo or improperly storing it can affect the handling, stability and operation of this vehicle. Before carrying any cargo, be sure to consult the owner's manual for load limits and loading guidelines. ²XM services require a subscription after 90-day trial period. Subscriptions governed by SiriusXM Customer Agreement; see www.siriusxm.com. If you decide to continue your XM service at the end of your complimentary trial, the plan you choose will automatically be renewed and you will be billed at then-current rates until you call XM at 1-800-967-2346 to cancel. Fees and programming subject to change. Available only to those at least 18 years of age in the 48 contiguous United States and D.C. ©2011 Sirius XM Radio Inc. Sirius, XM and all related marks and logos are trademarks of Sirius XM Radio Inc. and its subsidiaries. ³The USB Audio Interface is used for direct connection to and control of some current digital audio players and other USB devices that contain MP3, WMA, or AAC music files. Some USB devices with security software and digital rights-protected files may not work. Please see your dealer for details on compatibility. ⁴Navigation system available in the 48 contiguous United States and Hawaii. See your local Acura dealer for current navigation system area coverage. ⁵AcuraLink Real-Time Traffic and Weather™ require monthly premium XM NavTraffic® and NavWeather™ subscriptions. RDX with Technology Package includes 90 days of XM NavTraffic and NavWeather service. XM NavTraffic is only available in select markets. ⁶Some roads unverified. See your Acura dealer for details. ⁷Visit www.handsfreelink.com for a list of compatible phones and available features. ⁸Ordinary maintenance items or adjustments, parts subject to normal wear and replacement, and certain other items are excluded. See your Acura dealer for the terms and conditions of limited warranties. ⁹Acura Financial Services is a DBA of American Honda Finance Corporation. ¹⁰See your local dealer for details about Total Luxury Care (TLC) Roadside Assistance and Concierge service. ¹¹Based on 2011 EPA mileage estimates. Use for comparison purposes only. Do not compare to models before 2008. Your actual mileage will vary depending on how you drive and maintain your vehicle. ¹²Using gasoline with an octane lower than 91 may cause damage to the engine. Please consult your dealer for details.



2011 RL



RL

*FOR LUXURY AT ITS MOST ADVANCED,
EVERY PART HAS A PART.*

T

The moment you climb into the cabin of the RL, you'll gain an immediate understanding of the kind of thinking and craftsmanship that went into making the vehicle a supremely accommodating sanctuary. Seats, mirrors, climate-control and audio settings all welcome you aboard by adjusting to your preferences. Rich leather adorns seats, steering wheel and shift knob, as well as other contact points. In addition, the front seats pamper with multiple heat settings, and with the Technology Package, three levels of cooling.

And while the vehicle's material richness is indulging your sense of touch, the Bose® Surround Sound System is more than adept at satisfying your audio needs. The system's 10 acoustically positioned speakers provide sound that resembles a high-end home set-up. The Active Sound Control system helps keep unwanted engine noise from competing for your attention. The new industry-first noise-reducing wheel technology also contributes to a quieter cabin.

[CLICK TO VIEW A MODEL BROCHURE:](#)



I

An undeniable feeling of power is evident the moment you take control of the vehicle's 300-hp, 3.7-liter engine. Employing Acura's signature VTEC® system, it utilizes two separate camshaft profiles to satisfy the competing needs of low-end torque and high-end horsepower. The result is an exhilarating rush off the line, and power in reserve down the road. A high-inertia intake manifold helps keep airflow optimized while a dual exhaust system ensures unrestricted flow out of the engine, also a vital ingredient for performance. Aluminum construction keeps the engine lighter for improved handling and less vibration.

CLICK TO VIEW A MODEL BROCHURE:



As sumptuous as the RL cabin may be, the last thing you want to feel is cut off from the rest of your world. Designed with the idea that knowledge is power, the RL works to keep you fully informed of what's happening inside the cabin, and out. The available Acura Navigation System¹ features available continuously updated traffic and weather information,² as well as Zagat[®] restaurant reviews. The screen also doubles as a display for the available rearview camera. AcuraLink[®] technology can even help you get basic diagnostic information via your Bluetooth[®]-connected phone.³

[CLICK TO VIEW A MODEL BROCHURE:](#)



[CLICK TO VIEW A MODEL BROCHURE:](#)



II

One mark of a luxury vehicle is its ability to satisfy just about any need. With systems like the available GPS-linked, solar-sensing climate control, the RL can often accomplish this with no action on your part. In those instances when you do need to make your desires known, just a few words will suffice. Voice recognition gives you intimate control of a number of systems, including navigation, Bluetooth HandsFreeLink,^{®3} and many features of the vehicle's audio and climate control systems.



III

The Acura RL is proof that inspiration can be engineered. The vehicle's performance technologies have been tuned to deliver exhilarating response while also keeping you firmly in control. Chief among these is Super Handling All-Wheel Drive™ (SH-AWD®). Unlike most competitive systems, SH-AWD can sense where extra torque is needed, then distribute power not only between the front and back but also side to side among the rear wheels. In turns, the system can send up to 100% of available rear power to the outside wheel, then spin that wheel slightly faster for tighter cornering. These forces help the RL track with a precision unmatched by conventional all-wheel drive.



[CLICK TO VIEW A MODEL BROCHURE:](#)

W

With a goal of keeping driver and passengers out of harm's way, Acura engineers incorporated safety technology into every aspect of the RL. It starts with the vehicle's Advanced Compatibility Engineering™ (ACE™) body structure. This exclusive design uses a network of structural elements to help reduce frontal crash energy transferred to the passenger compartment.

The RL also features numerous systems designed to help keep collisions from happening in the first place. This includes the available Collision Mitigation Braking System™, which can sense an imminent collision and take steps to alert the driver to avoid it if possible, and help minimize its impact if not.



[CLICK TO VIEW A MODEL BROCHURE:](#)

*The 2011 Acura RL.
IT REDEEMS ANY CONCESSIONS MADE
DURING THE REST OF YOUR DAY.*



OWNER BENEFITS

When you purchase a vehicle with the exceptional quality of an Acura, you expect service and support to be of the same caliber. After all, a premium automobile is only part of the ownership experience. With Acura you also get a commitment. To personalized care. To attentive service. This commitment is apparent the moment you first enter an Acura dealership and for years down the road. It comes from a belief that every aspect of owning an Acura should be an enjoyable and rewarding experience.

Warranty⁴ All Acura vehicles and Acura accessories installed by the dealer at the time of vehicle purchase have a 4-year/50,000-mile limited warranty. Acura vehicles are also covered by a 6-year/70,000-mile limited powertrain warranty. In addition, outer-body rust-through is covered on all Acura vehicles by a 5-year/unlimited-mile limited warranty.

Acura Financial Services⁵ Whether you're buying or leasing, this program can assist you with the process.

Acura Care[®] Comprehensive vehicle and travel protection beyond the initial warranty period enhances peace of mind. See your Acura dealer for features and benefits available with this program.



Total Luxury Care[®] (TLC[®])⁶ As an Acura owner, you'll enjoy services like Trip-Interruption benefits, a 24-hour Roadside Assistance program and Acura Concierge,[™] which offers help in an emergency or when you're planning a trip.

1-800-to-Acura Operators are available 24 hours a day to help get answers to your Acura questions.

My Acura Your complimentary MyAcura personalized Web site provides the most current information about your vehicle, gives you tips on how to care for your Acura and lets you schedule service appointments online.

Accessories

When it comes to personalizing, choose Acura genuine accessories that are crafted to the same strict levels of quality as the rest of your RL. See your Acura dealer for a complete list of accessories or go to acura.com.

acura.com

Visit us online for the latest specifications, MSRPs and special offers. You can also apply for financing or even request a price quote from an Internet-certified Acura dealer.

PERFORMANCE

300-hp, 3.7-liter, 24-valve, SOHC VTEC[®] V-6 engine / 6-speed automatic transmission with Sequential SportShift paddle shifters / Super Handling All-Wheel Drive[™] (SH-AWD[®]) / 4-wheel independent suspension: double wishbone front / multi-link rear / Electronic variable power-assisted rack-and-pinion steering / 18-inch aluminum-alloy, noise-reducing wheels with P245/45 R18 96V high-performance all-season tires

SAFETY

Advanced Compatibility Engineering[™] (ACE[™]) body structure / Vehicle Stability Assist[™] (VSA[®]) with traction control / 4-wheel anti-lock braking system (ABS) with Electronic Brake Distribution (EBD) and Brake Assist / Dual-stage, multiple-threshold front airbags (SRS), front side airbags and side curtain airbags / Active front head restraints

STANDARD RL FEATURES

Dual-zone, dual-mode automatic climate control system / Keyless Access System with Acura personalized settings / Bluetooth[®] HandsFreeLink[®] wireless telephone interface³ / Active Sound Control / Electronic tilt and telescopic steering column / Perforated leather-trimmed interior / Driver's and front passenger's heated, power-adjustable seats / Acura/Bose[®] 10-speaker Surround Sound System with XM[®] Radio,⁷ 6-disc in-dash CD, DVD-Audio changer / USB Audio Interface with iPod[®] integration⁸ / Bluetooth Audio / Power moonroof with tilt feature / Auto-on/off xenon high-intensity discharge (HID) headlights / Fog lights

TECHNOLOGY PACKAGE (Adds to or replaces standard RL features)

Acura Navigation System with Voice Recognition,^{™1} Traffic Rerouting[™] and rearview camera / AcuraLink Real-Time TrafficWeather^{™2} / GPS-linked, solar-sensing, dual-zone, dual-mode automatic climate control system / Active Front Lighting System (AFS) / Body-colored rear parking sensors / Ventilated front seats / Simulated wood-grained steering wheel and gearshift knob trim

ADVANCE PACKAGE (Includes Technology Package)

Collision Mitigation Braking System[™] (CMBS[™]) / Adaptive Cruise Control (ACC) / Genuine wood trim / Power-folding side mirrors

SPECIFICATIONS

Estimated Fuel Mileage⁹ (City/Highway/Combined): 17 | 24 | 20 / Fuel Tank Capacity: 19.4 U.S. gallons / Required Fuel:¹⁰ Premium unleaded 91 octane / Curb Weight: 4099 lbs / Curb Weight with Technology Package: 4112 lbs / Curb Weight with Advance Package: 4112 lbs / Headroom (Front/Rear): 38.5 in | 37.2 in / Legroom (Front/Rear): 42.4 in | 36.3 in / Shoulder Room (Front/Rear): 58.5 in | 56.1 in / Hiproom (Front/Rear): 55.1 in | 54.0 in / EPA Passenger Volume: 99.1 cu ft / EPA Cargo Volume: 13.8 cu ft / Wheelbase: 110.2 in / Length: 195.8 in / Height: 57.2 in / Width: 72.7 in

RL COLORS

CLICK TO VIEW A MODEL BROCHURE:

Click here to build your own RL.

ACURA BRAND BROCHURE

2011 ZDX

2011 MDX

2011 RDX

2011 RL

2012 TL

2011 TSX

PLEASE MAKE A SELECTION.



2011 RL
©2011 Acura. Acura, RL, the stylized "A" logo, Acura Care, Acura Concierge, AcuraLink, AcuraLink Real-Time Traffic and Weather, Acura Navigation System with Voice Recognition, Advanced Compatibility Engineering (ACE), Automated Appointments, Collision Mitigation Braking System (CMBS), HandsFreeLink, Super Handling All-Wheel Drive (SH-AWD), Total Luxury Care (TLC), Traffic Rerouting, Vehicle Stability Assist (VSA) and VTEC are trademarks of Honda Motor Co., Ltd. Covered by patent rights issued and/or pending. Acura reserves the right to limit TLC services or reimbursements to any owner or driver when, in the judgment of Acura, the claims become excessive in frequency or type of occurrence. Acura also reserves the right to alter or withdraw the Acura Roadside Assistance Program, or any other part of the Acura TLC Program, at any time without notice. Specifications, features, illustrations and equipment shown in this catalog are based upon the latest available information at the time of publication. Although descriptions are believed to be correct, accuracy cannot be guaranteed. All images contained herein are either owned by American Honda Motor Co., Inc., or used under a valid license. It is a violation of federal law to reproduce these images without express written permission from American Honda Motor Co., Inc., or the individual copyright owner of such images. American Honda Motor Co., Inc., reserves the right to make changes at any time, without notice or obligation, in colors, specifications, accessories, materials and models. The *Bluetooth*® word mark and logos are owned by the *Bluetooth* SIG, Inc., and any use of such marks by Honda Motor Co., Ltd., is under license. Bose® is a trademark of Bose Corporation. iPod is a registered trademark of Apple Inc. The XM name, XM NavTraffic® and XM NavWeather™ are trademarks of Sirius XM Radio Inc. and its subsidiaries. Zagat Survey® is a registered trademark of Zagat Survey, LLC. Make an intelligent decision. Fasten your seat belt. ¹ Navigation system available in the 48 contiguous United States and Hawaii. See your local Acura dealer for current navigation system area coverage. ² AcuraLink Real-Time Traffic and Weather™ require monthly premium XM NavTraffic® and NavWeather™ subscriptions. RL with Technology Package includes 90 days of XM NavTraffic and NavWeather service. XM NavTraffic is only available in select markets. ³ Visit www.handsfreelink.com for a list of compatible phones and available features. ⁴ Ordinary maintenance items or adjustments, parts subject to normal wear and replacement, and certain other items are excluded. See your Acura dealer for the terms and conditions of limited warranties. ⁵ Acura Financial Services is a DBA of American Honda Finance Corporation. ⁶ See your local dealer for details about Total Luxury Care (TLC) Roadside Assistance and Concierge Service. ⁷ XM services require a subscription after 90-day trial period. Subscriptions governed by SiriusXM Customer Agreement; see www.siriusxm.com. If you decide to continue your XM service at the end of your complimentary trial, the plan you choose will automatically be renewed and you will be billed at then-current rates until you call XM at 1-800-967-2346 to cancel. Fees and programming subject to change. Available only to those at least 18 years of age in the 48 contiguous United States and D.C. ©2011 Sirius XM Radio Inc. Sirius, XM and all related marks and logos are trademarks of Sirius XM Radio Inc. and its subsidiaries. ⁸ The USB Audio Interface is used for direct connection to and control of some current digital audio players and other USB devices that contain MP3, WMA, or AAC music files. Some USB devices with security software and digital rights-protected files may not work. Please see your dealer for details on compatibility. ⁹ Based on 2011 EPA mileage estimates. Use for comparison purposes only. Do not compare to models before 2008. Your actual mileage will vary depending on how you drive and maintain your vehicle. ¹⁰ Using gasoline with an octane lower than 91 may cause damage to the engine. Please consult your dealer for details.



TL

*More performance. More luxury.
In short, more TL.*

2012



Intensity, refined.

3.7

*3.7-liter VTEC® engine
(TL SH-AWD)*

Its newly sculpted lines evoke a sense of anticipation. Its more sharply honed performance reinforces the bond between driver and vehicle. The 2012 Acura TL is proof that power can be thoroughly refined, yet still retain every bit of its capacity to thrill.

With its taut, finely tailored silhouette and more aggressive details like the darkened headlights and bold wheel design, every element speaks to the power and precision of the TL.



CLICK TO VIEW A MODEL BROCHURE:



Among the design influences for the TL's revised exterior was the look and feel of a high-end watch. As with a fine timepiece, the closer you look at the TL, the more intricately textured and detailed different elements become. From the use of gloss-black details to the matte-black mesh that calls to mind the aggressiveness of past TL designs, everything works together. It is this level of detail that makes the TL more intriguing and, ultimately, that much more special to its owner.

Jon Ikeda
Acura Chief Designer

"The proportions of a vehicle tell you a lot about its nature. With its long hood and short rear deck, there is visual movement to the design. The TL just looks fast."

CLICK TO VIEW A MODEL BROCHURE:



In the TL, technology is designed to work intuitively and elegantly. Many of the systems recognize your intimate needs and react, even where there is no contact.

This includes the available voice-activated navigation system, complete with Zagat Survey® restaurant reviews as well as available XM NavTraffic® and NavWeather™ information.¹

Voice recognition can also be used with the available Acura/ELS Surround® Premium Audio System. The available Advance Package even includes Song By Voice® technology that lets you verbally call up music stored on your connected iPod®² or the vehicle's built-in hard drive. It's all part of the philosophy that the most powerful technology is the most easy to use.



Despite the supreme comfort afforded by the TL cabin, this is not luxury for luxury's sake, but for the sake of the driver. From the design and placement of every control, to the improved sound insulation and available GPS-linked climate control, the goal was to create an environment free of distraction and discomfort, so you can concentrate more on the task at hand.

Simon Yu
Lead Interior Designer

"The curved metal band on the dash was modeled after the spray a power boat makes as it carves through the water. Its concave shape creates a feeling of spaciousness for front passengers."

[CLICK TO VIEW A MODEL BROCHURE:](#)

10-way power
driver's seat

10

Mechanical precision, infused with human warmth.

Inside the TL, you'll find that refinement was anything but an afterthought. The spacious cabin invites you in with expertly crafted details, rich leather and front seats that offer multiple levels of heating as well as available ventilation. With the available Technology Package, the seats are trimmed in glove-soft full-grain Perforated Milano Premium Leather. The TL also anticipates your needs with memory-adjust seats, mirrors, and climate and audio settings. It all contributes to an environment that is at the same time relaxing and invigorating.



[CLICK TO VIEW A MODEL BROCHURE:](#)

While the TL may look like a pure design statement, it is, strictly speaking, a purpose-built machine. As such, every element has been fashioned to be authentic to its purpose. From the shape of the air-intake vents to the angle of the rear spoiler, nothing is superfluous. Nothing unnecessary.



[CLICK TO VIEW A MODEL BROCHURE:](#)



Damon Schell
Lead Exterior Designer

"The two key words in designing the new TL were sophisticated workmanship. Think of an Italian suit maker who really gets into the details of his work."

*Translating driver will
into reality.*

4

4-wheel independent suspension

*Accelerate. Shift. Turn. Brake.
How well a vehicle reacts to
driver input depends to a large
extent on what's happening
behind the scenes. To that end,
the TL chassis incorporates
high-tensile steel to make it
both light and rigid.*

*This firm foundation allows
Acura engineers to tune the
fully independent suspension
system more precisely. The
suspension system also features
advanced damper valves and
high roll stiffness for a flatter
ride and more direct response
to steering input.*



CLICK TO VIEW A MODEL BROCHURE:



The choice of two potent engines gives you two ways to generate pulse-quickening power.

Both the 280-hp, 3.5-liter and the TL SH-AWD's 305-hp, 3.7-liter engine utilize Acura's signature VTEC technology for uninterrupted power throughout the rpm range. A new 6-speed automatic transmission gives the TL not only quicker acceleration, but also improved fuel efficiency.³

The 3.7-liter engine features machined aluminum/silicon cylinder liners for increased strength and heat transfer. Mechanical etching inside the cylinders exposes the silicon crystals, helping reduce friction for better performance. The TL SH-AWD also offers driving enthusiasts an available close-ratio 6-speed manual transmission that lets you keep the shift points exactly where you want them.

Jon Ikeda
Acura Chief Designer

"When a car is built for performance, when it has some muscle, you want to show that off. You want to wrap it in a lean body."

[CLICK TO VIEW A MODEL BROCHURE:](#)



One of the thrills of driving a high-performance sport sedan is exploring the vehicle's potential. The TL's speed-sensitive steering and sport-tuned suspension give you a lot of room for fun. The TL SH-AWD extends the performance parameters even further with the addition of Acura's exclusive Super Handling All-Wheel Drive™ (SH-AWD®). Accelerate through a curve and SH-AWD can send up to 100% of available rear-wheel power to the outside wheel and then turn that wheel slightly faster, dramatically improving the vehicle's turning force to help the TL and its driver achieve a higher level of control.

*New for 2012, the blind spot information system (included with the Advance Package) utilizes radar sensors to alert you to the presence of vehicles located outside your field of vision.**

*The system is not a substitute for your own visual assessment before changing lanes; system accuracy will vary based on weather, size of object and speed.

CLICK TO VIEW A MODEL BROCHURE:



*Keeping you in touch,
in control and inspired.*

7

7,000,000 points of interest

*While the sport-tuned
suspension and Super
Handling All-Wheel Drive
work to keep you firmly
connected to the road,
systems like the available
Acura Navigation System
keep you connected
to the world beyond.*

*Its destination database
contains 7,000,000
points of interest, from
the nearest gas station to
local hotels and cultural
destinations. The system
can even dial for a
reservation through your
compatible Bluetooth®-
enabled cell phone.[†]*

*A sanctuary.
And at times, a fortress.*

6

Advanced six-airbag system

Luxury features are by no means the only technologies designed to help keep life's harsher elements at bay. The Advanced Compatibility Engineering™ (ACE®) body structure can help distribute frontal crash energy more evenly, helping reduce the forces transferred to the passenger cabin.

*Safety systems designed to help keep collisions from happening in the first place include Vehicle Stability Assist™ (VSA®), which can detect a loss of traction and take appropriate action to help keep you in control.**



*VSA is not a substitute for safe driving. It cannot correct the vehicle's course in every situation or compensate for reckless driving. Control of the vehicle always remains with the driver.

Owner Benefits

When you purchase a vehicle with the exceptional quality and reliability of an Acura, you expect service and support to be of the same caliber. After all, a premium automobile is only part of the ownership experience. With Acura you also get a commitment. To personalized care. To attentive service. This commitment is apparent the moment you first enter an Acura dealership and for years down the road. It comes from a belief that every aspect of owning an Acura should be an enjoyable and rewarding experience.

Warranty⁵ All Acura vehicles and Acura accessories installed by the dealer at the time of vehicle purchase have a 4-year/50,000-mile limited warranty. Acura vehicles are also covered by a 6-year/70,000-mile limited powertrain warranty. In addition, outer-body rust-through is covered on all Acura vehicles by a 5-year/unlimited-mile limited warranty.

Acura Financial Services⁶ Whether you're buying or leasing, we can assist you with the process.

Acura Care[®] Comprehensive vehicle and travel protection beyond the initial warranty period enhances peace of mind. See your Acura dealer for features and benefits available with this program.

Total Luxury Care[®] (TLC[®])⁷ As an Acura owner, you'll enjoy services like Trip-Interruption benefits, a 24-hour Roadside Assistance program and Acura Concierge[™] which offers help in an emergency or when you're planning a trip.

1-800-to-Acura Operators are available 24 hours a day to help get answers to your Acura questions.

My Acura Your complimentary My Acura personalized Web site provides the most current information about your vehicle, gives you tips on how to care for your Acura and lets you schedule service appointments online.

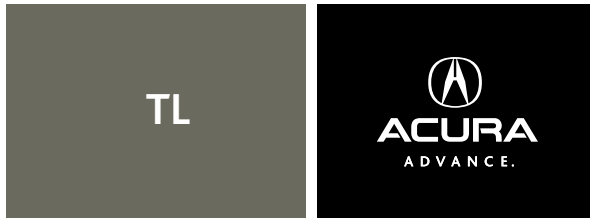
Accessories When it comes to personalizing, choose Acura Genuine Accessories that are crafted to the same strict levels of quality as the rest of your TL. See your Acura dealer for a complete list of accessories or go to acura.com.

acura.com Visit us online for the latest specifications, MSRPs and special offers. You can also apply for financing or even request a price quote from an Internet-certified Acura dealer.



STANDARD TL FEATURES

- 280-hp, 3.5-liter, 24-valve, SOHC VTEC® V-6 engine
- 6-speed automatic transmission with Sequential SportShift paddle shifters
- Front-wheel drive
- 4-wheel independent suspension: double wishbone front / multi-link rear
- Electric variable power-assisted rack-and-pinion steering (EPS)
- 17-inch aluminum-alloy wheels, P245/50 R17 98V high-performance all-season tires
- Dual-zone, dual-mode adaptive climate control system
- Remote entry system with Acura personalized settings
- Bluetooth® HandsFreeLink® telephone interface⁴
- Leather-trimmed interior
- Driver's and front passenger's heated, power-adjustable seats
- Acura 276-watt Premium Sound System with XM® Radio,⁸ 6-disc in-dash CD changer, Dolby® Pro Logic® II and 8 speakers, including 8-inch subwoofer
- USB Audio Interface with iPod® integration²
- Bluetooth Audio
- Power moonroof with tilt feature
- Auto-on/off xenon high-intensity discharge (HID) headlights
- Fog lights



TL SH-AWD FEATURES (Adds to or replaces standard TL features)

- 305-hp, 3.7-liter, 24-valve, SOHC V-6 engine with intake/exhaust VTEC
- Close-ratio 6-speed manual transmission (Requires Technology Package)
- Super Handling All-Wheel Drive™ (SH-AWD®)
- Hill start assist
- Exclusive front sport seats and steering-wheel design with contrast stitching
- 18-inch aluminum-alloy wheels, P245/45 R18 96V high-performance all-season tires

SAFETY

- Advanced Compatibility Engineering™ (ACE™) body structure
- Vehicle Stability Assist™ (VSA®) with traction control
- 4-wheel anti-lock braking system (ABS) with Electronic Brake Distribution (EBD) and Brake Assist
- Dual-stage, multiple-threshold front airbags (SRS), front side airbags and side curtain airbags
- Active front head restraints

TECHNOLOGY PACKAGE (Available for TL and TL SH-AWD)

- Acura Navigation System with Voice Recognition™ and rearview camera
- Acura/ELS Surround® 440-watt Premium Audio System with 10 speakers, hard disk drive (HDD) media storage, in-dash CD, DVD-Audio player and Dolby® Pro Logic® II
- Song By Voice®
- AcuraLink Real-Time Traffic and Weather™¹
- Traffic Rerouting™¹
- Keyless Access System with smart entry, pushbutton ignition and Acura personalized settings
- GPS-linked, solar-sensing, dual-zone, dual-mode adaptive climate control system
- Perforated Milano Premium Leather-trimmed interior

ADVANCE PACKAGE (Includes Technology Package)

- Blind spot information system (BSI)
- Ventilated and heated front seats
- Aluminum-alloy wheels and tires size increase: TL to 18-inch; TL SH-AWD to 19-inch, P245/40 R19 94W high-performance all-season tires

TL SPECIFICATIONS

- Estimated Fuel Mileage³ (City/Highway/Combined)
TL AT: 20/29/23 | TL SH-AWD AT: 18/26/21 MT: 17/25/20
- Fuel Tank Capacity 18.5 U.S. gallons
- Required Fuel⁹ Premium unleaded 91 octane
- Curb Weight TL: 3726 lbs | TL SH-AWD: 3968 lbs
- Curb Weight with Technology Package
TL: 3741 lbs | TL SH-AWD (AT/MT): 3982 lbs/3858 lbs
- Curb Weight with Advance Package
TL: 3770 lbs | TL SH-AWD: 4001 lbs
- Headroom (Front/Rear) 38.4 in | 36.7 in
- Legroom (Front/Rear) 42.5 in | 36.2 in
- Shoulder Room (Front/Rear) 58.2 in | 56.2 in
- Hiproom (Front/Rear) 55.7 in | 54.8 in
- EPA Passenger Volume 98.2 cu ft
- EPA Cargo Volume TL: 13.1 cu ft | TL SH-AWD: 12.5 cu ft
- Wheelbase 109.3 in / Length 194.0 in / Height 57.2 in / Width 74.0 in

TL COLORS

CLICK TO VIEW A MODEL BROCHURE:

Click here to build your own TL.

ACURA BRAND BROCHURE

2011 ZDX

2011 MDX

2011 RDX

2011 RL

2012 TL

2011 TSX

PLEASE MAKE A SELECTION.



2012 TL
©2012 Acura. Acura, TL, the stylized "A" logo, Acura Care, Acura Concierge, AcuraLink, AcuraLink Real-Time Traffic and Weather, Acura Navigation System with Voice Recognition, Advanced Compatibility Engineering (ACE), HandsFreeLink, Song By Voice, Super Handling All-Wheel Drive (SH-AWD), Total Luxury Care (TLC), Traffic Rerouting, Vehicle Stability Assist (VSA), and VTEC are trademarks of Honda Motor Co., Ltd. Covered by patent rights issued and/or pending. Specifications, features, illustrations and equipment shown in this catalog are based upon the latest available information at the time of publication. Although descriptions are believed to be correct, accuracy cannot be guaranteed. All images contained herein are either owned by American Honda Motor Co., Inc., or used under a valid license. It is a violation of federal law to reproduce these images without express written permission from American Honda Motor Co., Inc., or the individual copyright owner of such images. American Honda Motor Co., Inc., reserves the right to make changes at any time, without notice or obligation, in colors, specifications, accessories, materials and models. The *Bluetooth*® word mark and logos are owned by the *Bluetooth* SIG, Inc., and any use of such marks by Honda Motor Co., Ltd., is under license. Dolby, Pro Logic, and the double-D symbol are registered trademarks of Dolby Laboratories. ELS Surround is a registered trademark of Panasonic Corporation of North America. All rights reserved. iPod is a registered trademark of Apple Inc. The XM name, XM NavTraffic®, and XM NavWeather™ are trademarks of Sirius XM Radio Inc. and its subsidiaries. Make an intelligent decision. Fasten your seat belt. ¹AcuraLink Real-Time Traffic and Weather™ as well as Traffic Rerouting™ require monthly premium XM NavTraffic® and NavWeather™ subscriptions. Navigation-equipped vehicles include 90 days of XM NavTraffic and NavWeather service. XM NavTraffic is only available in select markets. ²The USB Audio Interface is used for direct connection to and control of some current digital audio players and other USB devices that contain MP3, WMA, or AAC music files. Some USB devices with security software and digital rights-protected files may not work. Please see your dealer for details on compatibility. ³Based on 2012 EPA mileage estimates. Use for comparison purposes only. Do not compare to models before 2008. Your actual mileage will vary depending on how you drive and maintain your vehicle. ⁴Visit www.handsfreelink.com for a list of compatible phones and available features. ⁵Ordinary maintenance items or adjustments, parts subject to normal wear and replacement, and certain other items are excluded. See your Acura dealer for the terms and conditions of limited warranties. ⁶Acura Financial Services is a DBA of American Honda Finance Corporation. ⁷See your local dealer for details about Total Luxury Care (TLC) Roadside Assistance and Concierge service. ⁸XM services require a subscription after 90-day trial period. Subscriptions governed by SiriusXM Customer Agreement; see www.siriusxm.com. If you decide to continue your XM service at the end of your complimentary trial, the plan you choose will automatically be renewed and you will be billed at then-current rates until you call XM at 1-800-967-2346 to cancel. Fees and programming subject to change. Available only to those at least 18 years of age in the 48 contiguous United States and D.C. ©2011 Sirius XM Radio Inc. Sirius, XM and all related marks and logos are trademarks of Sirius XM Radio Inc. and its subsidiaries. ⁹Using gasoline with an octane lower than 91 may cause damage to the engine.



TSX

*IT'S MOTIVATED BY A SPIRITED i-VTEC ENGINE.
YOU WILL BE, TOO.*

2011

TSX



[CLICK TO VIEW A MODEL BROCHURE:](#)



You can measure its performance in horsepower, torque and gear ratios.

[CLICK TO VIEW A MODEL BROCHURE:](#)



And now, in cubic feet.

Introducing the Acura TSX Sport Wagon. Spirited driving takes on an entirely new dimension.

[CLICK TO VIEW A MODEL BROCHURE:](#)

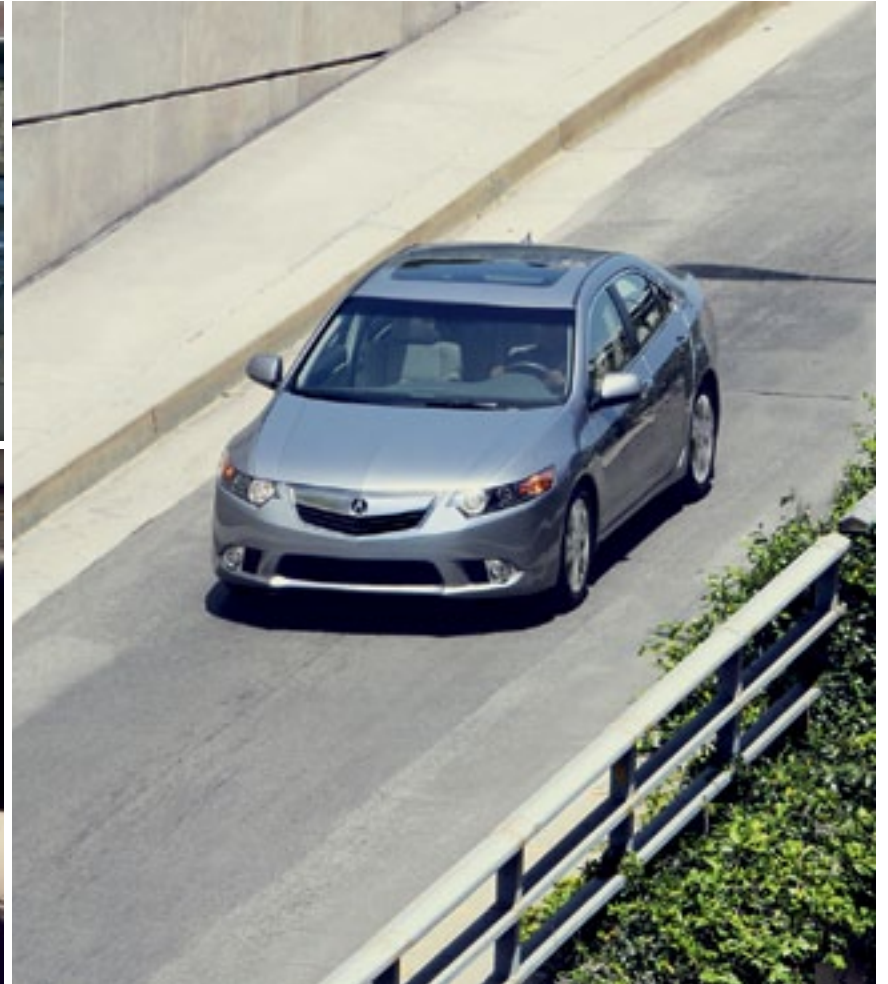


31 fully integrated systems.

32 when you climb in.

Point the TSX toward any stretch of asphalt and you'll quickly get a sense of how uniquely in tune it is with both you and the road. It all starts with the body structure. High-tensile steel used in the construction of both the TSX Sedan and Sport Wagon has the dual distinction of increasing the strength of the chassis while also reducing its weight for more nimble response. The race-bred suspension system takes full advantage of the rigid chassis, responding to driver input with minimal body roll. Speed-sensitive steering lets you feel through your fingertips how the wheels are encountering the road.

CLICK TO VIEW A MODEL BROCHURE:



1

Among the qualities you'll find in every Acura engine is the ability to generate power beyond what is expected for its displacement size. The 2.4-liter engine powering the TSX Sedan and Sport Wagon is no exception. By altering the valve movement, it generates peak output throughout the power band. From a standing start, you'll feel it as low-end torque produces a satisfying rush. At speed, the engine gets its second wind, sending horsepower numbers up past the point where you'd expect them to start falling. A 7100-rpm redline translates into high-revving action. For those seeking even bigger thrills, the TSX Sedan also has an available V-6 engine. Generating 280 hp, it launches you off the line with authority. The V-6 model also gets its own suspension tuning and larger diameter wheels, further lengthening its performance parameters.

2

Inside the TSX cabin, you'll find an environment tuned for performance. The driver's seat is bolstered for more positive contact during spirited driving. Buttons and switches are placed for intuitive operation. The leather-wrapped steering wheel and shift knob offer a tactile feel. But an emphasis on sport doesn't mean the abandonment of refinement. The eight-way power driver's seat adjustments, tied to the memory system, let you quickly get into your ideal position. The dual-zone automatic climate control, available as a GPS-linked system, also accommodates your individual preferences.

With abundant leather, and on the V-6 Sedan, Active Sound Control technology, the cabin of the TSX is a sanctuary from life's harsher elements. But don't get the idea that once inside, you're cut off from the outside world. Zagat Survey® restaurant reviews, included with the available voice-activated Acura Navigation System, mean that the TSX will not only get you there, it will also help ensure that "there" is worth getting to. You can even phone ahead for a reservation through your connected Bluetooth®-enabled cell phone.¹ The navigation system also includes traffic and weather information² and suggests alternative routes if necessary. It's all designed to keep you in the know, no matter where you go.



CLICK TO VIEW A MODEL BROCHURE:



4

The available Acura/ELS Surround® Premium Audio System was created with the help of GRAMMY® Award-winning engineer and producer Elliot Scheiner. Individually tuned to both the Sedan and Sport Wagon's interiors, the system is designed to recreate the depth and nuance of the original studio recording. The 10-speaker setup features XM® Radio³ and can play DVD-Audio discs as well as the songs on the internal hard disk drive (HDD) or your USB-connected iPod.⁴

5

With its ample capacity, as well as numerous hidden storage compartments, the TSX Sport Wagon is the perfect addition to an active lifestyle. As our first-ever wagon, we also made sure it could deliver everything you expect in an Acura. Which means it can handle curves as well as cargo.

As no area of engineering advancement is more important than driver and passenger safety, both the TSX Sedan and Sport Wagon feature an impressive array of safety features. It all starts with the Advanced Compatibility Engineering™ (ACE™) body structure, which helps direct frontal crash energy around the passenger cabin. Away from those inside.

Both vehicles also feature numerous systems designed to help keep incidents from happening in the first place, like Vehicle Stability Assist™ (VSA®), Electronic Brake Distribution (EBD) and Brake Assist.

The TSX Sport Wagon's highway rating of 30 mpg⁵ means more miles between fill-ups. 60.5 cubic feet of cargo capacity means you can make the most out of every one of them.



Acura reminds you to properly secure items in the cargo area.

CLICK TO VIEW A MODEL BROCHURE:

*Acura TSX Sport Wagon and Sedan.
MORE COMFORT. MORE UTILITY. MORE FUN.
NOTICE A PATTERN?*



OWNER BENEFITS

When you purchase a vehicle with the exceptional quality of an Acura, you expect service and support to be of the same caliber. After all, a premium automobile is only part of the ownership experience. With Acura you also get a commitment. To personalized care. To attentive service. This commitment is apparent the moment you first enter an Acura dealership and for years down the road. It comes from a belief that every aspect of owning an Acura should be an enjoyable and rewarding experience.

Warranty⁶ All Acura vehicles and Acura accessories installed by the dealer at the time of vehicle purchase have a 4-year/50,000-mile limited warranty. Acura vehicles are also covered by a 6-year/70,000-mile limited powertrain warranty. In addition, outer-body rust-through is covered on all Acura vehicles by a 5-year/unlimited-mile limited warranty.

Acura Financial Services⁷ Whether you're buying or leasing, this program can assist you with the process.

Acura Care⁸ Comprehensive vehicle and travel protection beyond the initial warranty period enhances peace of mind. See your Acura dealer for features and benefits available with this program.



Total Luxury Care⁹ (TLC)⁹ As an Acura owner, you'll enjoy services like Trip-Interruption benefits, a 24-hour Roadside Assistance program and Acura Concierge,[™] which offers help in an emergency or when you're planning a trip.

1-800-to-Acura Operators are available 24 hours a day to help get answers to your Acura questions.

My Acura Your complimentary MyAcura personalized Web site provides the most current information about your vehicle, gives you tips on how to care for your Acura and lets you schedule service appointments online.

Accessories

When it comes to personalizing, choose Acura genuine accessories that are crafted to the same strict levels of quality as the rest of your TSX. See your Acura dealer for a complete list of accessories or go to acura.com.

acura.com

Visit us online for the latest specifications, MSRPs and special offers. You can also apply for financing or even request a price quote from an Internet-certified Acura dealer.

PERFORMANCE

201-hp, 2.4-liter, 16-valve, DOHC i-VTEC[®] 4-cylinder engine (Sedan & Sport Wagon) / 280-hp, 3.5-liter, 24-valve SOHC VTEC[®] V-6 engine (V-6 Sedan) / 5-speed automatic transmission with Sequential SportShift paddle shifters / Close-ratio 6-speed manual transmission (available 4-cylinder Sedan only) / Front-wheel drive / 4-wheel independent suspension: double wishbone front / multi-link rear / Electric variable power-assisted rack-and-pinion steering (EPS) / 17-inch aluminum-alloy wheels with P225/50 R17 93V high-performance all-season tires (Sedan & Sport Wagon) / 18-inch aluminum-alloy wheels with P235/45 R18 94V high-performance all-season tires (V-6 Sedan)

SAFETY

Advanced Compatibility Engineering[™] (ACE[™]) body structure / Vehicle Stability Assist[™] (VSA[®]) with traction control / 4-wheel anti-lock braking system (ABS) with Electronic Brake Distribution (EBD) and Brake Assist / Dual-stage, multiple-threshold front airbags (SRS), front side airbags and side curtain airbags / Active front head restraints

STANDARD TSX FEATURES

Dual-zone automatic climate control system with air filtration / Remote entry system with folding key and Acura personalized settings / Bluetooth[®] HandsFreeLink[®] wireless telephone interface / Active Sound Control (V-6 Sedan) / Tilt and telescopic steering column / Retractable cargo area cover (Sport Wagon) / Sport seats with perforated leather-trimmed interior and contrast stitching / Driver's and front passenger's heated, power-adjustable seats / 60/40 split fold-down rear seatback / Acura 360-watt Premium Sound System with XM[®] Radio,³ in-dash CD player and 7 speakers, including subwoofer / USB Audio Interface with iPod[®] integration⁴ / Bluetooth Audio / Power moonroof with tilt feature / Auto-on/off xenon high-intensity discharge (HID) headlights / Fog lights / Roof rails (Sport Wagon)

TECHNOLOGY PACKAGE (Adds to or replaces standard features)

Acura Navigation System with Voice Recognition[™], Traffic Rerouting[™] and rearview camera / Acura/ELS Surround[®] 415-watt Premium Audio System (Sport Wagon, 460 watts) with 10 speakers, hard disk drive (HDD) media storage, in-dash CD, DVD-Audio player and Dolby[®] Pro Logic[®] II / AcuraLink Real-Time Traffic and Weather^{™2} / GPS-linked, solar-sensing, dual-zone automatic climate control system / Song By Voice[®] / Remote-linked power-operated tailgate (Sport Wagon)

TSX SEDAN SPECIFICATIONS

TSX Estimated Fuel Mileage⁵ (City/Highway/Combined) AT: 22 | 31 | 26 MT: 21 | 29 | 24
Curb Weight AT: 3470 lbs MT: 3400 lbs / Curb Weight with Technology Package
AT: 3486 lbs MT: 3415 lbs

TSX V-6 Estimated Fuel Mileage⁵ (City/Highway/Combined) AT: 19 | 28 | 23
Curb Weight AT: 3664 lbs / Curb Weight with Technology Package AT: 3680 lbs
Fuel Tank Capacity: 18.5 U.S. gallons / Required Fuel:⁹ Premium unleaded 91 octane / Headroom (Front/Rear): 37.6 in | 37.0 in / Legroom (Front/Rear): 42.4 in | 34.3 in / Shoulder Room (Front/Rear): 57.8 in | 56.1 in / Hiproom (Front/Rear): 55.6 in | 54.2 in / EPA Passenger Volume: 94.5 cu ft / EPA Cargo Volume: 14.0 cu ft / Wheelbase: 106.5 in / Length: 185.6 in / Height: 56.7 in / Width: 72.4 in

TSX SPORT WAGON SPECIFICATIONS

Estimated Fuel Mileage⁵ (City/Highway/Combined) AT: 22 | 30 | 25 / Curb Weight
AT: 3599 lbs / Curb Weight with Technology Package AT: 3623 lbs / Fuel Tank Capacity: 18.5 U.S. gallons / Required Fuel:⁹ Premium unleaded 91 octane / Headroom (Front/Rear): 37.6 in | 36.9 in / Legroom (Front/Rear): 42.4 in | 34.3 in / Shoulder Room (Front/Rear): 57.8 in | 56.1 in / Hiproom (Front/Rear): 55.6 in | 54.2 in / EPA Passenger Volume: 94.4 cu ft / EPA Cargo Volume (Behind First Row/Second Row): 60.5 cu ft | 25.8 cu ft / Wheelbase: 106.5 in / Length: 189.2 in / Height: 57.9 in / Width: 72.4 in

TSX COLORS

CLICK TO VIEW A MODEL BROCHURE:

Click here to build your own TSX.

ACURA BRAND BROCHURE

2011 ZDX

2011 MDX

2011 RDX

2011 RL

2012 TL

2011 TSX

PLEASE MAKE A SELECTION.



2011 TSX
©2011 Acura. Acura, TSX, the stylized "A" logo, Acura Care, Acura Concierge, AcuraLink, AcuraLink Real-Time Traffic and Weather, Acura Navigation System with Voice Recognition, Advanced Compatibility Engineering (ACE), HandsFreeLink, Song By Voice, Total Luxury Care (TLC), Traffic Rerouting, Vehicle Stability Assist (VSA), VTEC and i-VTEC are trademarks of Honda Motor Co., Ltd. Covered by patent rights issued and/or pending. Specifications, features, illustrations and equipment shown in this catalog are based upon the latest available information at the time of publication. Although descriptions are believed to be correct, accuracy cannot be guaranteed. All images contained herein are either owned by American Honda Motor Co., Inc., or used under a valid license. It is a violation of federal law to reproduce these images without express written permission from American Honda Motor Co., Inc., or the individual copyright owner of such images. American Honda Motor Co., Inc., reserves the right to make changes at any time, without notice or obligation, in colors, specifications, accessories, materials and models. The *Bluetooth*® word mark and logos are owned by the *Bluetooth* SIG, Inc., and any use of such marks by Honda Motor Co., Ltd., is under license. Dolby, Pro Logic, and the double-D symbol are registered trademarks of Dolby Laboratories. ELS Surround is a registered trademark of Panasonic Corporation of North America. All rights reserved. GRAMMY is a registered trademark of The Recording Academy and is used under license. iPod is a registered trademark of Apple Inc. The XM name, XM NavTraffic® and XM NavWeather™ are trademarks of Sirius XM Radio Inc. and its subsidiaries. Zagat Survey® is a registered trademark of Zagat Survey, LLC. Make an intelligent decision. Fasten your seat belt. ¹Visit www.handsfreelink.com for a list of compatible phones and available features. ²AcuraLink Real-Time Traffic and Weather™ require monthly premium XM NavTraffic® and NavWeather™ subscriptions. Navigation-equipped vehicles include 90 days of XM NavTraffic and NavWeather service. XM NavTraffic is only available in select markets. ³XM services require a subscription after 90-day trial period. Subscriptions governed by SiriusXM Customer Agreement; see www.siriusxm.com. If you decide to continue your XM service at the end of your complimentary trial, the plan you choose will automatically be renewed and you will be billed at then-current rates until you call XM at 1-800-967-2346 to cancel. Fees and programming subject to change. Available only to those at least 18 years of age in the 48 contiguous United States and D.C. ©2011 Sirius XM Radio Inc. Sirius, XM and all related marks and logos are trademarks of Sirius XM Radio Inc. and its subsidiaries. ⁴The USB Audio Interface is used for direct connection to and control of some current digital audio players and other USB devices that contain MP3, WMA, or AAC music files. Some USB devices with security software and digital rights-protected files may not work. Please see your dealer for details on compatibility. ⁵Based on 2011 EPA mileage estimates. Use for comparison purposes only. Do not compare to models before 2008. Your actual mileage will vary depending on how you drive and maintain your vehicle. ⁶Ordinary maintenance items or adjustments, parts subject to normal wear and replacement, and certain other items are excluded. See your Acura dealer for the terms and conditions of limited warranties. ⁷Acura Financial Services is a DBA of American Honda Finance Corporation. ⁸See your local dealer for details about Total Luxury Care (TLC) Roadside Assistance and Concierge Service. ⁹Using gasoline with an octane lower than 91 may cause damage to the engine. Please consult your dealer for details.