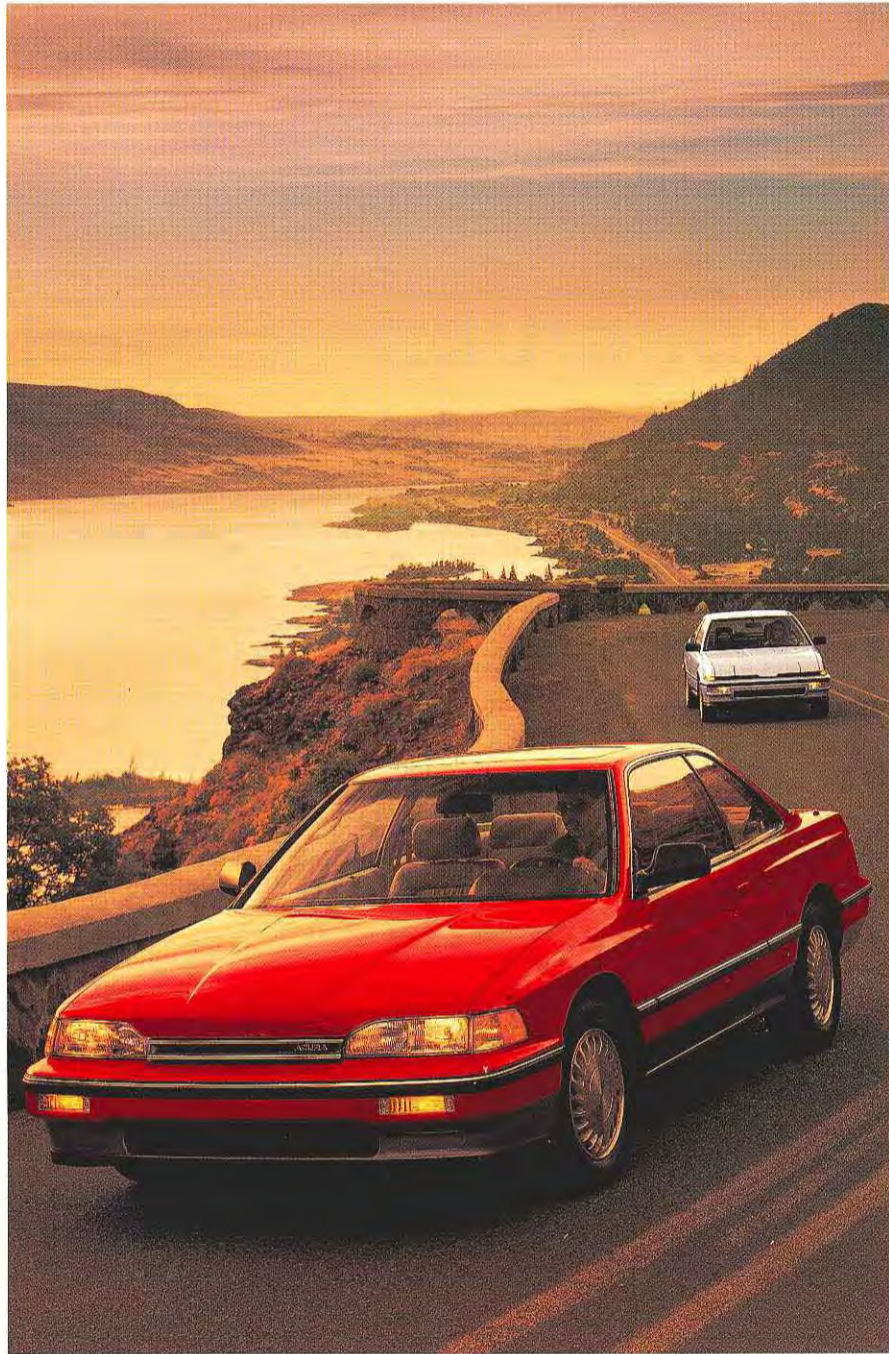


LEGEND AND INTEGRA



ACURA



The 1989 Acura Legend Coupe. World-class performance from an innovative 24-valve V-6 engine embodying the lessons of Formula 1 racing, and a 4-wheel independent double-wishbone suspension.

MOST WORLD-CLASS CARS MAKE A STATEMENT. THE ACURA LEGEND MAKES A DECLARATION OF INDEPENDENCE.

There is a special class of driver emerging on the automotive scene today. These discerning individuals understand that innovation, intelligence and performance are the truest expressions of personal style where it counts most. Behind the wheel.

It is for this special breed of driver that the precision crafted Acura Legend was created. The Legend Coupe, with its distinctive sports styling. The Legend Sedan, with the stately elegance of a performance touring sedan.

Automobiles that mate the most sophisticated technology with the finest craftsmanship. That are built around the single most important element in an automobile: the driver.

Working from the inside out, the designers focused on the total integration of car and driver. Starting with the creation of an innovative, stress reducing driving environment which places the driver in total command.

Every element of the stylish Legend interior functions as a natural extension of the driver. From the large analog gauges and precisely positioned switches and controls, to the multi-adjustable driver's seat that holds you comfortably in

place, even during spirited driving.

Advanced aerodynamic styling—with drag coefficients that are equal to or better than most exotic sports cars—minimize wind noise and turbulence, while also providing exceptional driver visibility.

Of course, the real beauty of the Legend Coupe and Sedan might be said to be what you don't see. A responsive 160-horsepower 24-valve SOHC V-6 with programmed fuel injection. Optional dual mode electronically-controlled 4-speed automatic transmission. An innovative 4-wheel independent double-wishbone suspension that provides responsive, sure-footed handling and a quiet, comfortable ride.

Along with speed-sensitive power-assisted rack-and-pinion steering, 4-wheel disc brakes—with an Anti-Lock Braking (ALB) system on Legend L and LS. And a Supplemental Restraint System (SRS) driver's side air bag that's standard on all models.

Precision Crafted Performance. It's everything discerning drivers demand in a luxury performance automobile today. And what you receive in the exciting Acura Legend Coupe and Sedan.



The 1989 Acura Legend Sedan. A refined, world-class touring sedan marked by classic styling, responsive performance and confidence-inspiring handling.

LEGEND STYLE: ADVANCED ENGINEERING, OUTSTANDING QUALITY AND SAFETY, LASTING VALUE.

The Acura Legend. The highest achievement in engine and suspension technology, advanced aerodynamics, intelligent ergonomics and uncompromising quality.

Quality that is apparent in the classic styling. And in the deep, lustrous sheen of the unique 23-step, 4-coat, 4-bake finish. In the rich luxurious feel of leather-trimmed upholstery or elegant Moquette fabric. And the seemingly endless list of standard equipment and features.

Of course, there is an added level of quality to be experienced with every drive.

You feel it in the refined engine—developed by engineers with years of international Grand Prix race-winning experience. And in the confidence-inspiring handling provided by the 4-wheel double-wishbone suspension.

You feel it in the unique sense of security provided by the ergonomically-designed interior, and the stress reducing driving environment. So you enjoy driving as never before.

Safety is an important element of the Legend design. Standard features include rigid, computer-designed unit-

body construction, protective steel door beams, 5 mph front and rear bumpers and three-point front and rear outboard seat belts.

Every Acura Legend Coupe and Sedan is also equipped with a Honda Research and Development Co., Ltd. designed Supplemental Restraint System (SRS), featuring a driver's side air bag. Used in conjunction with the three-point seat belt, the air bag cushions the driver's head and upper torso when deployed in a potentially dangerous frontal impact.

And while hazards are sometimes unavoidable, confident, sure, stopping ability is provided by power-assisted dual-diagonal 4-wheel disc brakes. Honda-designed Anti-Lock Braking (ALB) system, standard on the Legend L and LS, helps you to maintain steering control in panic stop situations even on slippery surfaces or in inclement weather.

Whether you select the Legend Coupe or Sedan, the advanced engineering adds immeasurable value to the lasting ownership experience. Not to mention what it adds to the sheer joy of driving.



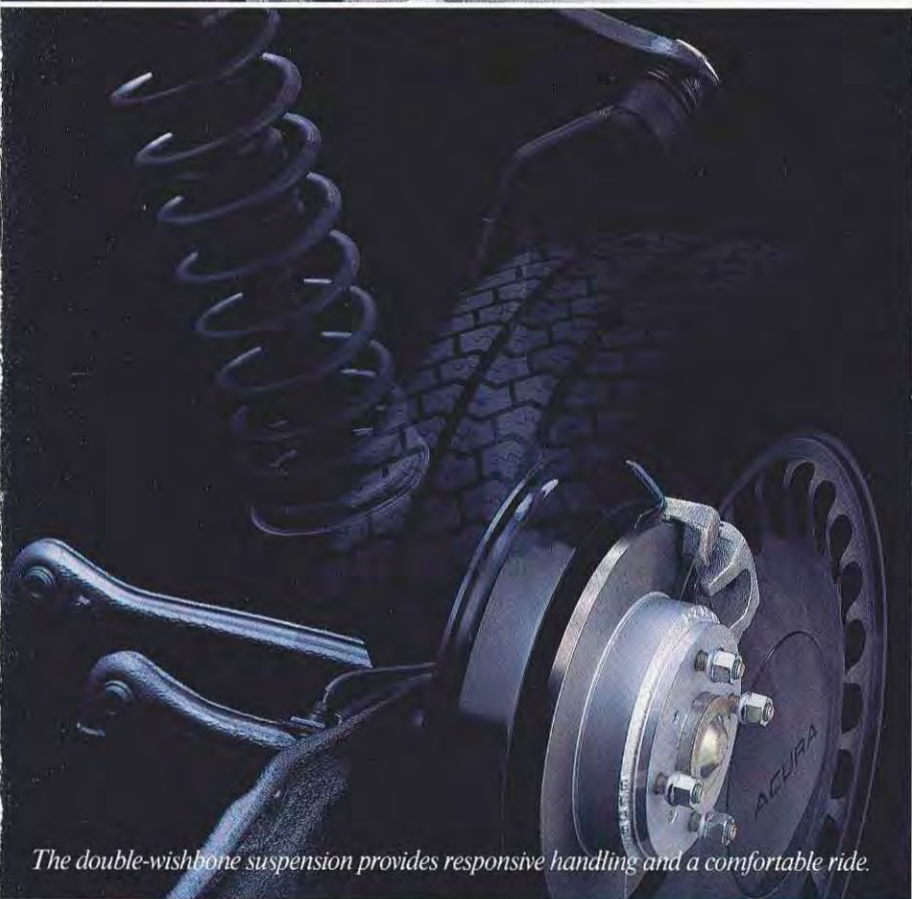
With 160 horsepower and the agile handling of the 4-wheel independent suspension at your command, the Acura Legend provides an exhilarating driving experience.



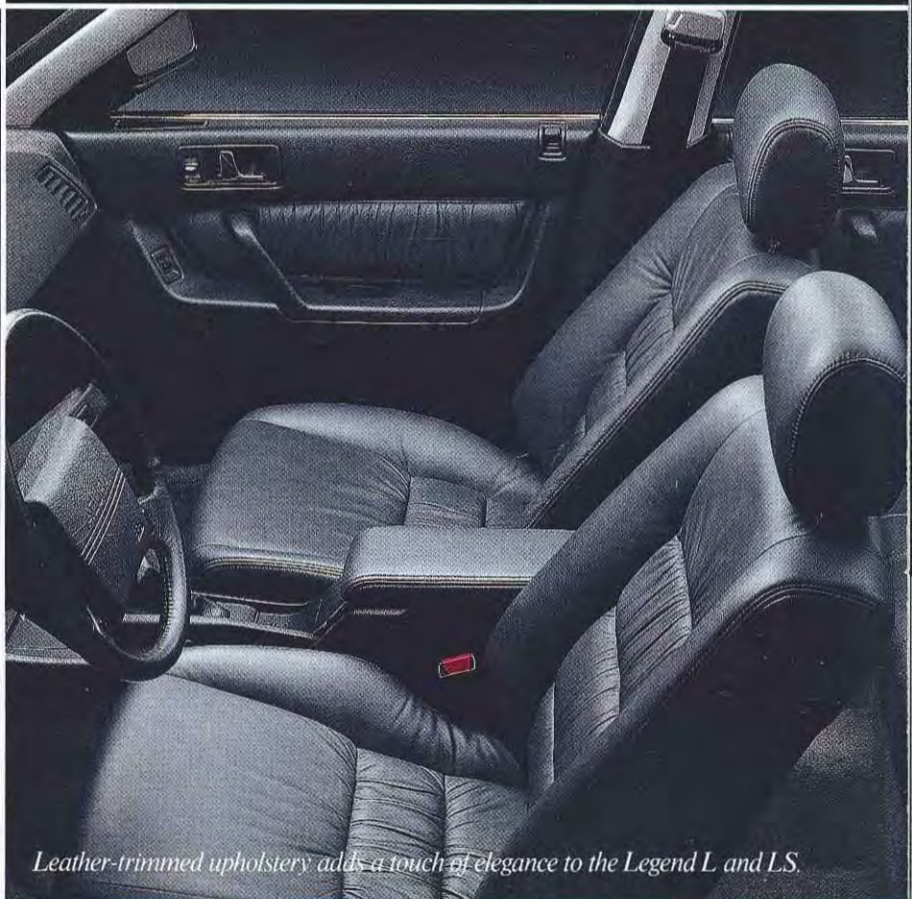
The Legend comes equipped with alloy wheels.



Low profile halogen headlights contribute to low coefficients of drag.



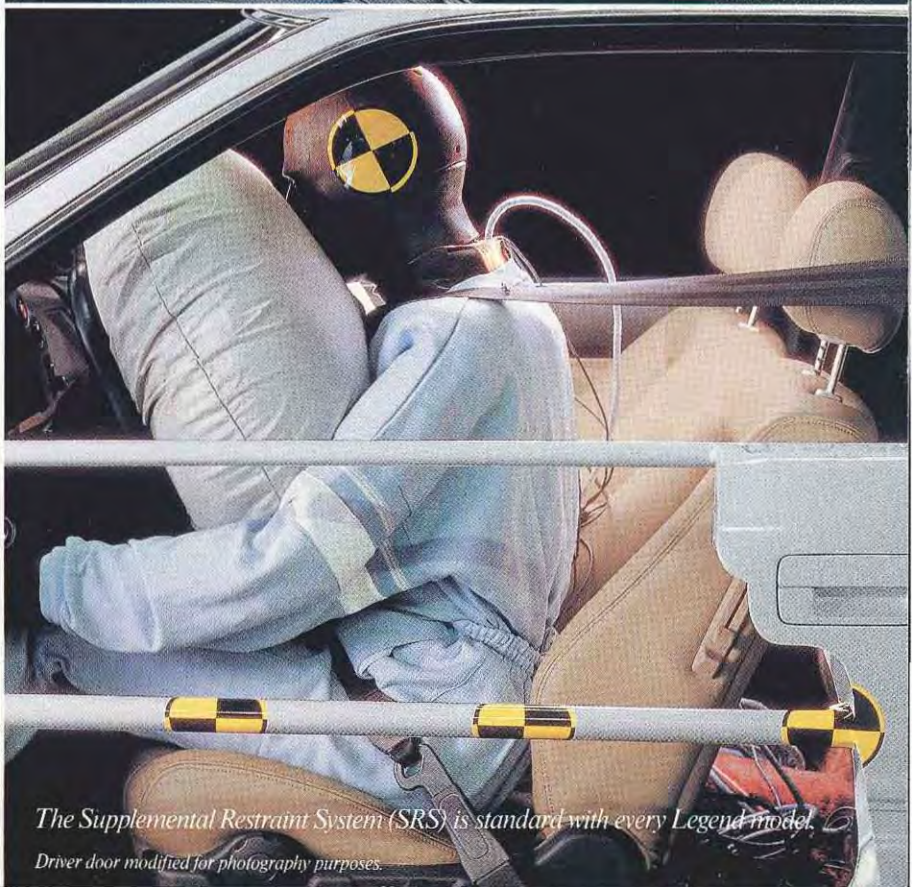
The double-wishbone suspension provides responsive handling and a comfortable ride.



Leather-trimmed upholstery adds a touch of elegance to the Legend L and LS.



The 23-step, 4-coat, 4-bake painting process provides a deep, lustrous finish.



*The Supplemental Restraint System (SRS) is standard with every Legend model.
Driver door modified for photography purposes.*

THE ACURA LEGEND. FEW THINGS IN LIFE COME SO COMPLETE.

Performance and luxury. Blended together in an extensive list of engineering and comfort features. In your choice of Legend, Legend L or Legend LS Coupe and Sedan models.

SPECIFICATIONS

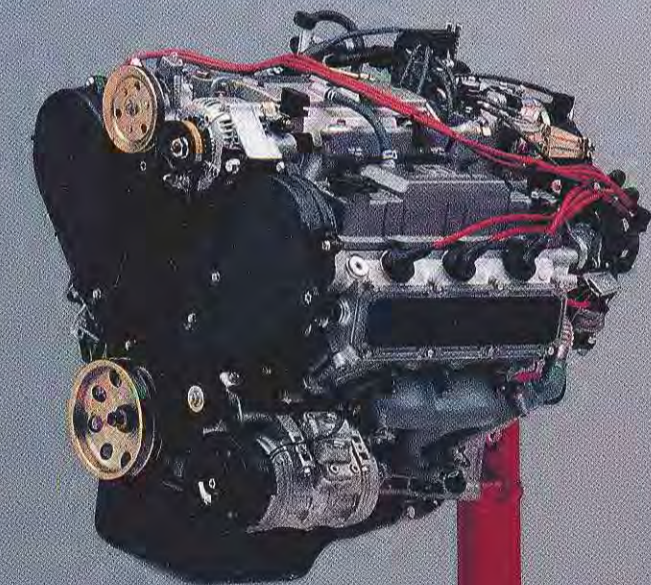
Engine Type	2.7-Liter, SOHC, 90° V-6, 24-valve	
Horsepower (SAE net)	160 hp @ 5900 RPM	
Torque (SAE net)	162 lbs.-ft. @ 4500 RPM	
Induction System	Programmed Fuel Injection, Variable Intake Control System	
Transmissions	5-speed manual (standard). Electronic 4-speed dual mode automatic with programmed lockup torque converter (optional)	
Suspension	4-wheel independent double wishbone, front/rear coil springs and stabilizer bars	
Steering	Speed-sensitive power-assisted rack-and-pinion	
Tires	Michelin MXV 205/60-15 (V-rated on Coupe) (H-rated on Sedan)	
Braking System	Dual diagonal, power-assisted 4-wheel disc	
Anti-Lock Braking (ALB) System	Honda-designed ALB system with four wheel sensors and electronic control unit (L & LS)	
Supplemental Restraint System (SRS)	Honda-designed driver's side air bag/knee bolster	
Coefficient of Drag (Cd)	0.32 (Sedan) 0.30 (Coupe)	
Fuel Capacity	Approximately 18.0 U.S. gallons (68 liters)	
Recommended Fuel	Unleaded Regular 87 (R+M)	
Fuel Mileage (City/Highway)	(Unavailable at time of printing. See dealer for details.)	
Curb Weight:	Sedan	Coupe
(5-speed)	3146 lbs. (1427 kg)	3089 lbs. (1401 kg)
(Automatic)	3186 lbs. (1445 kg)	3128 lbs. (1419 kg)
EPA Passenger Volume	94.0 cu. ft.	86.0 cu. ft.
EPA Trunk Capacity	14.0 cu. ft.	15.0 cu. ft.
EPA Total Volume	108.0 cu. ft.	101.0 cu. ft.

EXTERIOR DIMENSIONS

	Sedan	Coupe
Wheelbase	108.7 in. (2760 mm)	106.5 in. (2705 mm)
Track, Front	59.1 in. (1500 mm)	59.1 in. (1500 mm)
Track, Rear	57.5 in. (1460 mm)	59.1 in. (1500 mm)
Overall Length	190.6 in. (4840 mm)	188.0 in. (4775 mm)
Overall Width	68.9 in. (1750 mm)	68.7 in. (1745 mm)
Overall Height	54.7 in. (1390 mm)	53.9 in. (1369 mm)

WARRANTIES

Vehicle: 3-year/36,000-mile limited warranty
 Outer body rust-through: 3-year/Unlimited-mile limited warranty
 (Ordinary maintenance items or adjustments, parts subject to normal wear and replacement, and certain items are excluded. See your Acura dealer for the terms and conditions of limited warranties.)



The sophisticated Legend SOHC 24-valve 2.7-liter aluminum alloy V-6, with programmed fuel injection and Variable Intake Control System, is a model of smooth, quiet operation, outstanding efficiency and superb driveability across a broad rpm range.

EXTERIOR FEATURES

	SEDAN	SEDAN L	SEDAN LS	COUPE	COUPE L	COUPE LS
Bronze-tinted glass	•	•	•	•	•	•
Dual power-operated/heated door mirrors	• ⁴	•	•	•	•	•
Flush-mounted halogen headlights	•	•	•	•	•	•
Wraparound body side moulding	•	•	•	•	•	•
4-coat, 4-bake paint	•	•	•	•	•	•
Rear window defroster with timer	•	•	•	•	•	•

INTERIOR FEATURES: COMFORT AND CONVENIENCE

Air conditioning	•	•	•	•	•	•
Automatic climate control	—	—	•	—	—	•
AM/FM stereo ETR w/cassette, Dolby, [®] FM diversity antenna	•	•	• ⁵	•	•	• ⁵
Automatic power antenna	•	•	•	•	•	•
Power-operated sunroof with sliding shade	•	•	•	•	•	•
Power windows/door locks	•	•	•	•	•	•
Cruise control	•	•	•	•	•	•
Security System	—	•	•	—	•	•
Remote trunk/fuel filler door releases	•	•	•	•	•	•
Two-speed variable intermittent wipers	•	•	•	•	•	•
Driver's Information Center	—	—	—	—	—	•
Driver/passenger automatic seat belt presenter	—	•	•	•	•	•
Adjustable steering column	•	•	•	•	•	•
Digital quartz clock	•	•	•	•	•	•
Dual illuminated vanity mirrors	•	•	•	•	•	•
Driver's left foot rest	•	•	•	•	•	•

INTERIOR FEATURES: SEATING AND TRIM

Leather-trimmed interior and steering wheel	—	Opt	•	—	Opt	•
20-oz. cut pile carpeting	•	•	•	•	•	•
Driver's seat w/adjustable thigh/lumbar support	•	•	•	•	•	•
Driver's power seat with memory	—	•	•	—	•	•
Passenger's power seat	—	—	Opt	—	—	•

• Standard Opt Optional — Not Available ⁴ Heated Mirror feature not available ⁵ Acura/Bose[®] Music system on LS

For complete list of standard and optional features see Legend product brochure.

LEGEND COLOR COMBINATIONS

EXTERIOR	INTERIOR					
	SEDAN ¹	SEDAN L ²	SEDAN LS ³	COUPE ¹	COUPE L ²	COUPE LS ³
Olympia White	Burgundy	Ivory	—	Charcoal Blk	Ivory	Ivory
Seattle Silver†	—	—	Burgundy	—	—	—
Bahama Gold†	Ivory	Ivory	Ivory	Ivory	Ivory	Ivory
Tuscany Taupe†	—	Ivory	Ivory	—	—	—
Phoenix Red	—	—	—	Charcoal Blk	Ivory	—
Persian Red*	—	Charcoal Blk	Charcoal Blk	—	—	Charcoal Blk
Chateau Red†	Burgundy	—	—	—	—	—
Geneva Green*	—	—	Ivory	—	Ivory	Ivory
Laurel Blue†	—	—	—	—	—	Blue
Florence Blue†	Blue	Blue	—	Blue	—	—
Noble Silver†	—	—	—	—	Charcoal Blk	—
Asturias Gray†	Gray	—	—	—	—	—
Ebony Black†	—	Charcoal Blk	—	—	Charcoal Blk	—
Granada Black*	—	—	Ivory	—	—	Ivory

1) Moquette fabric 2) Moquette fabric or Leather-trimmed 3) Leather-trimmed †) Metallic *) Pearl



THE ACURA INTEGRA. HIGH STANDARDS EVEN IN THE OPTIONS.

The Acura Integra. Available in 3-door and 5-door models. And choice of full-feature RS or the stylish LS trim levels.

SPECIFICATIONS

Engine Type	1.6-Liter, DOHC, 4-cyl., 16-valve	
Horsepower (SAE net)	118 hp @ 6500 rpm	
Torque (SAE net)	103 lbs.-ft. @ 5500 rpm	
Induction System	Programmed Fuel Injection	
Transmissions	5-speed manual (standard) 4-speed automatic with lockup torque converter (optional)	
Suspension	Front independent with torsion bars, struts and stabilizer bar. Rear semi-independent with beam axle, Panhard rod and stabilizer bar	
Steering	Power-assisted rack-and-pinion	
Tires	195/60R14 (Michelin MXV on LS) (Yokohama on RS)	
Braking Systems	Dual diagonal, power-assisted 4-wheel disc	
Coefficient of Drag (Cd)	0.34	
Fuel Capacity	Approximately 13.2 U.S. gallons (50 liters)	
Recommended Fuel	Unleaded regular 87 ($\frac{R+M}{2}$)	
Fuel Mileage (City/Highway)	26/30 mpg (5-speed) 25/30 mpg (automatic) (For comparison purposes only. California figures are the same.)	
Curb Weight:	3-Door	5-Door
RS (5-speed)	2313 lbs. (1049 kg)	2390 lbs. (1084 kg)
LS (5-speed)	2355 lbs. (1068 kg)	2396 lbs. (1087 kg)
EPA Passenger Volume	80.0 cu. ft.	80.0 cu. ft.
EPA Cargo Volume	16.0 cu. ft.	16.0 cu. ft.
EPA Total Volume	96.0 cu. ft.	96.0 cu. ft.

EXTERIOR DIMENSIONS

	3-Door	5-Door
Wheelbase	96.5 in. (2450 mm)	99.2 in. (2520 mm)
Track, Front	55.9 in. (1420 mm)	55.9 in. (1420 mm)
Track, Rear	56.5 in. (1435 mm)	56.5 in. (1435 mm)
Overall Length	168.7 in. (4285 mm)	171.5 in. (4355 mm)
Overall Width	65.6 in. (1665 mm)	65.6 in. (1665 mm)
Overall Height	52.9 in. (1345 mm)	52.9 in. (1345 mm)

WARRANTIES

Vehicle	3-year/36,000-mile limited warranty
Outer body rust-through	3-year/Unlimited-mile limited warranty

(Ordinary maintenance items or adjustments, parts subject to normal wear and replacement, and certain items are excluded. See your Acura dealer for the terms and conditions of limited warranties.)

Specifications, features, illustrations and equipment shown in this catalog are based upon the latest available information at the time of publication. Although descriptions are believed correct, accuracy cannot be guaranteed. American Honda Motor Co., Inc. reserves the right to make changes at any time, without notice or obligation, in colors, specifications, accessories, materials and models. Some vehicles are shown with optional equipment.

Bose® is a registered trademark of Bose Corporation. Covered by patent rights issued and/or pending.

EXTERIOR FEATURES

	3-Door RS	3-Door LS	5-Door RS	5-Door LS
Tinted glass	•	•	•	•
Dual remote operated door mirrors	•	•	•	•
Retractable halogen headlights	•	•	•	•
Light alloy wheels (5.5 J x 14)	Opt	•	Opt	•
Full wheel covers	•	—	•	—
Wraparound body side moulding	•	•	•	•
Rear window defroster	•	•	•	•
Rear window wiper/washer	•	•	•	•

INTERIOR FEATURES: COMFORT AND CONVENIENCE

	3-Door RS	3-Door LS	5-Door RS	5-Door LS
Air conditioning	Opt	Opt	Opt	Opt
Soft-touch heating and ventilation controls	•	•	•	•
AM/FM stereo ETR with cassette, 4 speakers	Opt	•	Opt	•
Power-operated sunroof with sliding shade	—	•	—	—
Power windows/door locks	—	—	—	•
Cruise control	•	•	•	•
Remote hatch/fuel filler releases	•	•	•	•
Adjustable steering column	•	•	•	•
Digital quartz clock	•	•	•	•
Tachometer	•	•	•	•
Childproof rear door locks	—	—	•	•

INTERIOR FEATURES: SEATING AND TRIM

	3-Door RS	3-Door LS	5-Door RS	5-Door LS
Reclining front bucket seats	•	•	•	•
Split fold-down rear seatbacks	•	•	•	•
Full length center console	•	•	•	•
Full interior/cargo area carpeting	•	•	•	•
Rear cargo area cover	•	•	•	•
Adjustable seat belt anchors	•	—	•	•

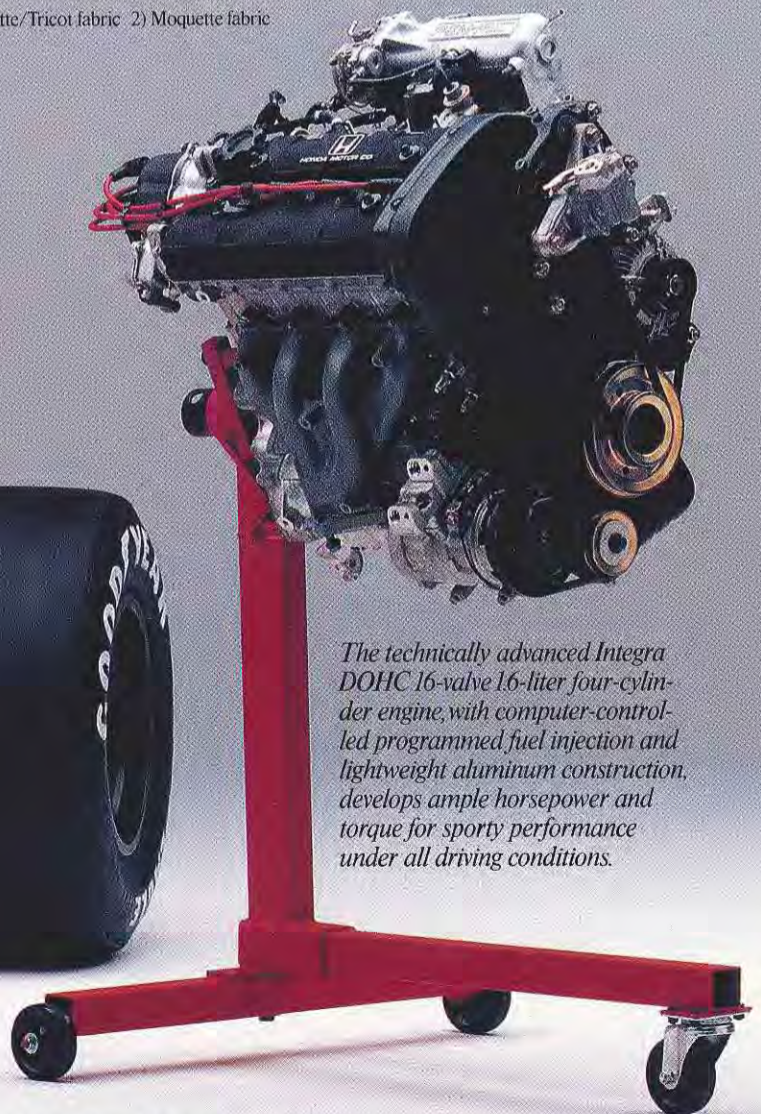
• Standard Opt Optional — Not Available

For complete list of standard and optional features see Integra product brochure.

INTEGRA COLOR COMBINATIONS

EXTERIOR	INTERIOR			
	3-Door RS ¹	3-Door LS ²	5-Door RS ¹	5-Door LS ²
Polar White	Blue	Black & Beige	—	Blue
Almond Cream	—	—	Beige	—
Laguna Gold Metallic	—	Black & Beige	—	Beige
Rio Red	Black	Black	Beige	—
Cardinal Red Metallic	—	—	—	Gray
Superior Blue Metallic	Blue	Blue	Blue	Blue
Blade Silver Metallic	Black	—	Gray	—
Asturias Gray Metallic	—	—	—	Gray
Flint Black Metallic	—	Black & Beige	—	—

1) Moquette/Tricot fabric 2) Moquette fabric



The technically advanced Integra DOHC 16-valve 1.6-liter four-cylinder engine, with computer-controlled programmed fuel injection and lightweight aluminum construction, develops ample horsepower and torque for sporty performance under all driving conditions.

The Marlboro McLaren Honda Formula 1 cars have been a dominant force on the international Grand Prix racing circuit in 1988. The designers of the Acura Legend and Integra engines draw on Honda Motor Co., Ltd.'s extensive Formula 1 experience in the development of the powerplants.



Refined during hours of computer simulation and wind tunnel testing, the distinctive wedge-shaped Integra has a coefficient of drag of just 0.34. Quality manufacturing and a long list of standard equipment make the Acura Integra perfect for your active lifestyle.

THE INTEGRA BEGINS WITH THE IDEA THAT DRIVING SHOULD BE FUN.

Sports sedan owners have always desired more from a vehicle than other drivers. They demand and appreciate style, versatility and performance.

The Acura Integra 3-door and 5-door sports sedans meet those demands. And more. Offering a special balance of sleek aerodynamic styling, hatchback utility, state-of-the-art engineering, and spirited performance that's unmatched in its class.

Starting with the exacting design standard known as Precision Crafted Performance, the Integra design team set out to create a truly interactive relationship between car and driver.

Advanced computer-aided design techniques and extensive wind tunnel testing were utilized in development of the rigid unit-body structure and stylish wedge-shaped body.

Fully-integrated front air dam, retractable halogen headlights, flush glass and door handles and smoothly sloped rear window contribute to a

low coefficient of drag of just 0.34.

The low, sloping hood and large glass area give a commanding 310 degrees of visibility from the ergonomically designed Integra cockpit. The wraparound instrument panel places the white-on-black analog gauges right in front of you for enhanced readability, while the most frequently used switches and controls have been positioned within easy reach of the comfortably padded steering wheel.

Every Integra is comfortable and surprisingly spacious. The front bucket seats provide firm lateral and back support, while a split fold-down rear seat increases cargo capacity and utility. The convenient hatchback design features easy accessibility and standard cargo cover.

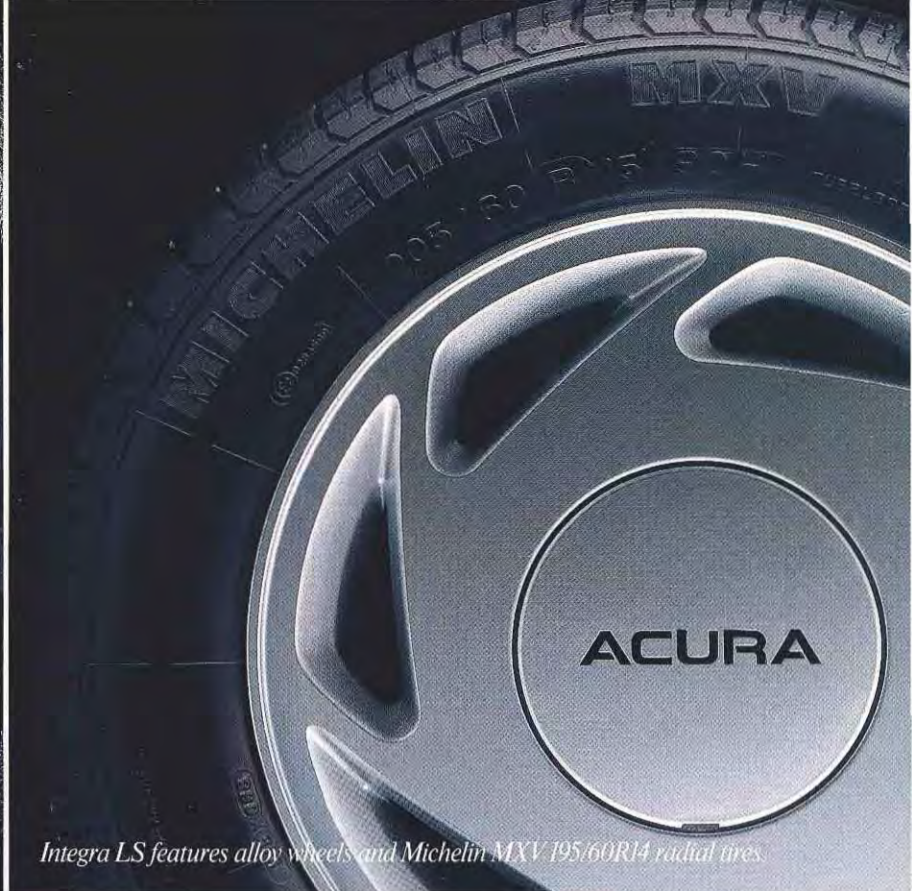
It's a combination of sporty performance and beauty that makes the Acura Integra easy to live with. No matter what your lifestyle demands from a car.



The 1989 Integra sports sedan's spirited performance comes from a 118-horsepower DOHC 16-valve 1.6-liter engine paired with a sports-tuned suspension.



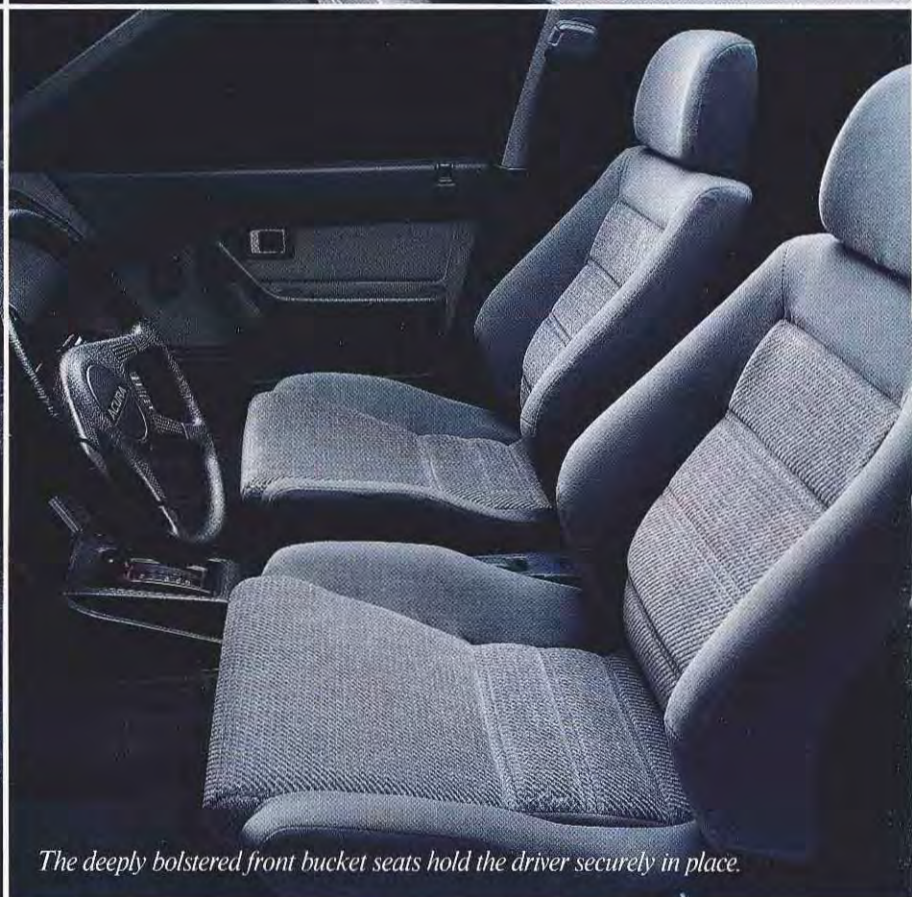
Stereo and heating/cooling controls are within easy reach of the driver.



Integra LS features alloy wheels and Michelin MXV 195/60R14 radial tires.



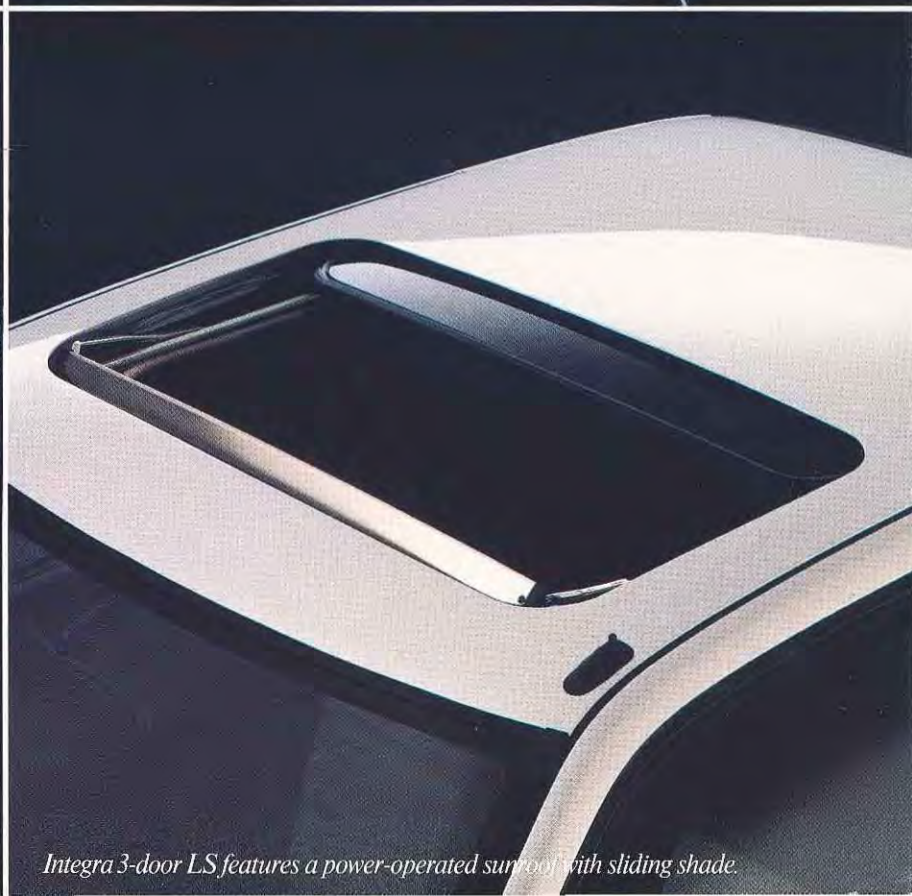
The large, analog gauges are precisely positioned for easy readability.



The deeply bolstered front bucket seats hold the driver securely in place.



Power-assisted 4-wheel disc brakes provide sure stopping performance.



Integra 3-door LS features a power-operated sunroof with sliding shade.

INTEGRA SPIRIT: RESPONSIVE PERFORMANCE, CRISP HANDLING AND A CHOICE OF FEATURES.

The formula for the Acura Integra sports sedan's spirited performance starts with a sophisticated 118-horsepower 1.6-liter, 16-valve, dual overhead cam four cylinder engine. It's a powerplant embodying lessons derived from many years of Formula 1 Grand Prix racing. Like four valves per cylinder. Computer-controlled programmed fuel injection. And weight-saving aluminum construction. It's serious performance for serious drivers.

Of course, an engine this responsive deserves handling equal to the task. Which is what's provided by the Integra sports sedan's combination of an equal-length halfshaft front-wheel drive system, power-assisted rack-and-pinion steering and standard power-assisted 4-wheel disc brakes.

And independent strut/torsion bar front suspension, trailing link rear suspension and stabilizer bars front and rear. All this is capped off by

performance-oriented 195/60R14 steel-belted radial tires mounted on styled steel or light alloy wheels.

Helping translate the smooth Integra power to the road is a choice of precise, short-throw 5-speed manual or refined 4-speed automatic transmission with lockup torque converter.

These advanced technology systems work together to provide a most exhilarating driving experience.

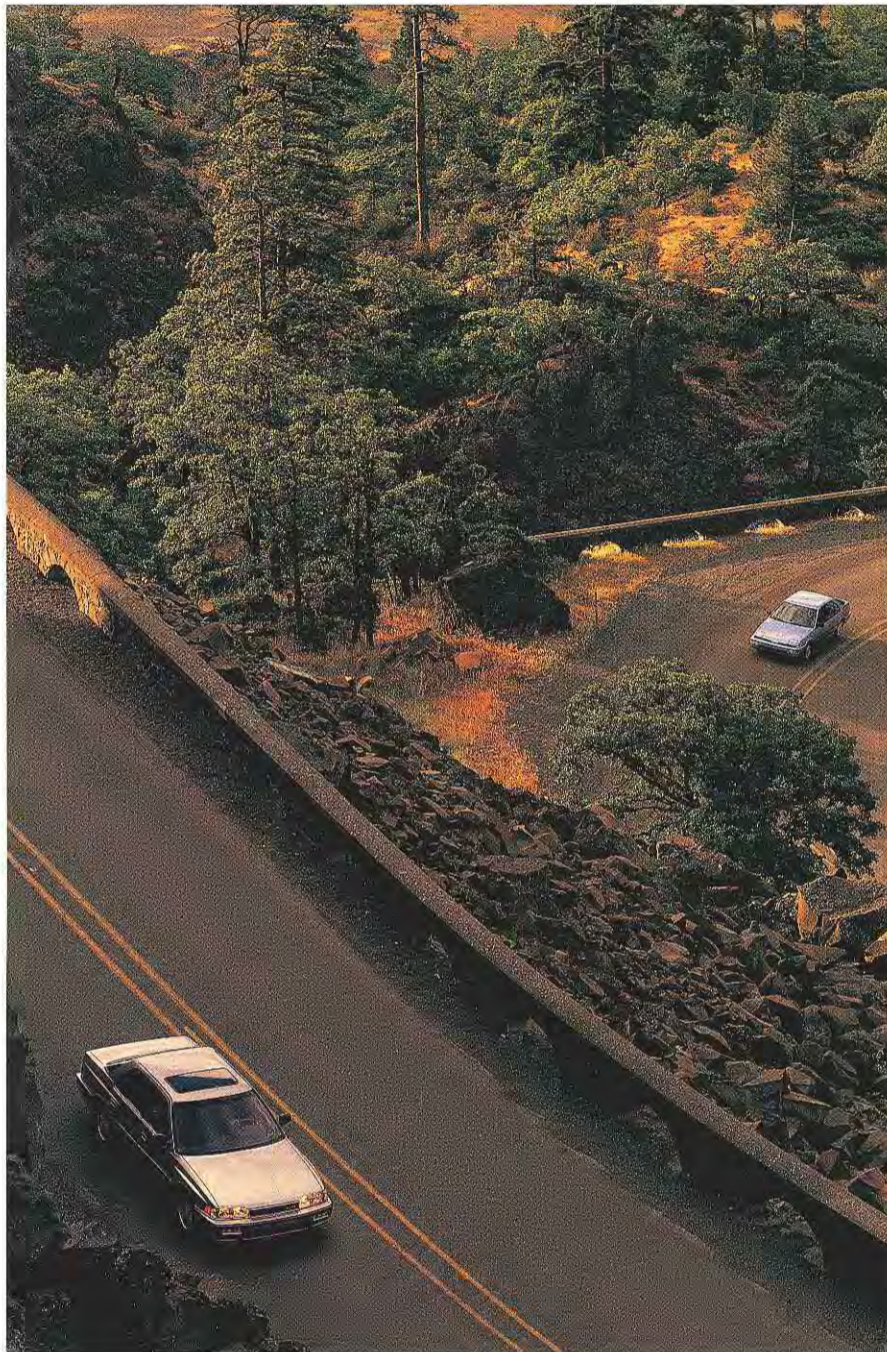
But comfort is not forgotten, either, in the rich, durable fabric upholstery, full length center console and thickly padded steering wheel mounted on a standard adjustable steering column.

So whether you choose the sporty 3-door or stylish 5-door, in fully-equipped RS or stylish LS trim levels, Integra delivers the quality, reliability, features, appearance and performance that stands out from the crowd.



A special 3-coat, 3-bake painting process provides a deep, lustrous finish. It's just one example of the quality manufacturing of every Acura Integra.

LEGEND AND INTEGRA



A DEALER NETWORK THAT BUILT ITS REPUTATION BY EXCEEDING CUSTOMER EXPECTATIONS.

The extraordinary Acura ownership experience begins with a very special buying experience.

From the moment you enter a modern, state-of-the-art Acura sales and service facility, you'll be treated with the courtesy and respect that has made Acura the top ranked nameplate in overall customer satisfaction in the annual J.D. Power and

Associates Customer Satisfaction Index (CSI) Survey two years in a row.*

And once you've bought your Acura Legend or Integra, that outstanding attention does not stop. You're supported wherever you go by a nationwide network of quality Acura dealers.

The Acura promise: A total commitment to your lasting satisfaction.

ACURA
Precision crafted performance.