



A4

Audi A4

Truth in Engineering **Audi** 

IT'S AUDI

The story of our collection of obsessions.

Precision. Design. Vision. These are the kind of attributes that we deliver as a company, the kind of passions that go way past getting you from point A to point B. That's because Audi knows that how you get to your destination is only part of the story. And so it is with us as a luxury brand. Our obsessions are our commitments, a collection of inspirations that make up our core truth: That from a foundation of brilliant engineering, we craft more than great vehicles—we tell great stories.

A4

It reflects well on you.

We're certain we've aroused a certain curiosity inside you about Audi as an automobile manufacturer, and now we'd like to invite you to take a deeper dive into the Audi A4, a vehicle that sums up the very essence of what Audi is and where we've come from. Enjoy the ride in the Audi A4.



Design

We do not follow design trends. We set them.

There's no alternative to standing out.

In a segment overpopulated with the next best entry-level sedan, Audi chooses not to participate. For Audi, there are no entry-level vehicles. Our commitment to design ensures that the Audi A4 effortlessly stands apart. Perfectly proportioned lines stretch across the profile of the vehicle, helping solidify a design language that validates the progressive thinking we've been recognized for throughout the automotive world. A number of available trim levels perpetuate our design story, inside and out, making clear our commitment to the philosophy of building beautifully engineered vehicles. So while we may be limited to participate in a specific segment, we don't feel that we have to play along.







While the others end with luxury, we've just started.

More than a beautifully designed luxury automobile, the Audi A4 is a sedan capable of outperforming your expectations and delighting your senses. Available LED daytime running light technology introduces you to a pair of exemplary lines that streak across the vehicle. The Tornado line is delicately balanced with the roofline, giving the A4 its elegant, and distinctive, presence. Both front and rear bumpers add to the balance of the A4, further complementing a design language that is exceptionally ours. The only things our design lacks are the fluff and the bling and the illusions automotive manufacturers use to disguise conventional design. These are vehicles for lovers of art and design, enthusiasts of performance and power, and aficionados of technology and innovation. In the end, we sought out to build a vehicle meant to inspire you on an impassioned level.









Enlighten

Shedding a new light on illumination just happened to be a design boon.

Strength beyond numbers.

Audi decided long ago that “smart” is just above “aggressive” when it comes to engineering and design. Smart is seen in the available LED daytime running light technology and the Audi Single-frame® grille, which changed the way you look at an Audi as much as the engineers changed the way Audi looks to you. Smart took another step when they sought to change the way you feel when driving an Audi A4. We set our sights on reaching maximum efficiency without compromising performance, which might seem aggressive, but was the intelligent thing to do.¹ That’s why we could engineer a lightweight 2.0-liter turbocharged engine producing 220 horsepower that is reigned in by your choice of a manual, Audi multitronic® or eight-speed Tiptronic® transmission, while available sport suspension calibration helps optimize load distribution, giving the car an even more dynamic feel. And with available Audi quattro® all-wheel drive, you’ll drive smart in inclement weather, yet enjoy thrilling performance in the dry as well. We think it’s a smartly aggressive approach to creating an invigorating automotive experience.

¹ EPA estimates not available at time of printing. See www.fueleconomy.gov for updated information. Your mileage will vary.



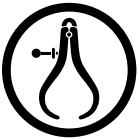
Decorative inlays

With your choice of available inlays in beautiful wood or aluminum, you will find unparalleled craftsmanship and attention to design throughout the interior. We use only the finest materials inside the cabin to accentuate luxury and sport.



Custom-fitted refuge.

At Audi, progress isn't just a word we use to sound, well, progressive. It's a philosophy we adopted because everyone else was playing the same old games. The Audi A4 was designed with the driver in mind, but not just for driving. Beautifully appointed interiors, leathers, decorative inlays and a keen sense of composition reveal an eye for design that other car makers are just starting to embrace. An available three-spoke multifunctional sport steering wheel with shift paddles puts a variety of functionality at your fingertips. When you climb into the cockpit of the A4, you'll climb into a space that will erase the outside world and inspire your next big adventure.



Craftsmanship

We've ensured that every stitch represents the detail that we put into every aspect of an Audi.

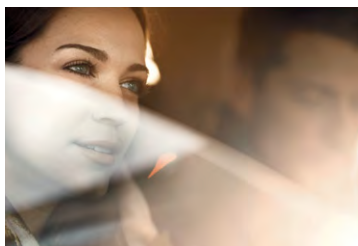


Skin deep just isn't deep enough.

There is a lot more to the beauty of our interior designs than just the materials we put in them—there's the collaborative thinking that our designers and engineers bring to the vehicle. There's the intent and craftsmanship behind each stitch and decorative inlay that give every Audi interior its unmistakable feel. It's a deliberate choice, ensuring that only the finest woods and aluminum accents beautify the inside of your Audi. And whether it's the natural placement of the gear selector, or the crisp click every dial and button makes so that you're certain you've selected the right option, it all comes back to one simple idea: that true beauty goes far deeper than the surfaces you see.



The case for unbreakable bonds.



Conventional wisdom may suggest that an all-wheel drive system is there purely to provide confidence in inclement weather, but the available Audi quattro® all-wheel drive is much more than just a foul-weather friend. It's performance engineering that takes on a dry, twisty mountain road as beautifully as it tracks through powder.¹ In other words, quattro® helps enhance performance by appropriately transferring power to the necessary wheels when accelerating and turning, so you have confidence-inspiring performance for almost any road condition. Inclement weather aside, the really gripping story about quattro® is how it performs overall, forging a bond between you and the road that really connects.¹



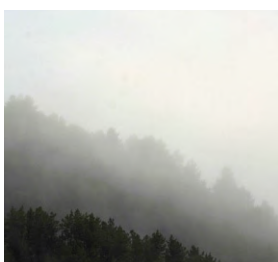
All-around confidence

Just like life, the road can throw you a curve. So throw one right back with the superior grip and control of quattro®. It helps provide the performance and confidence you would expect from Audi, no matter if you're commuting in the city or crisscrossing the country. This is advanced engineering you can live with.

¹ When driving during cold, rainy, snowy or icy weather conditions, ensure that your vehicle is equipped with appropriate all-season or winter tires. Even with appropriate tires, you must always drive in a manner appropriate for the weather, visibility and road conditions. ² Obey all speed and traffic laws.



▼ HUMIDITY 95%



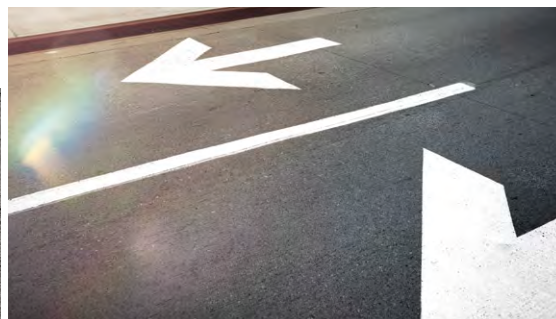
All-weather capability

There is a reason quattro® is considered such a friend in foul weather. Under normal driving conditions, the center differential splits torque at a ratio of 40:60 front to rear, but as conditions change and become more challenging, the ratio is optimized to help maximize grip. And with the ability to transfer the majority of available torque mechanically to the wheels with the most grip, the operation is exceptionally smooth, even under extreme conditions.¹

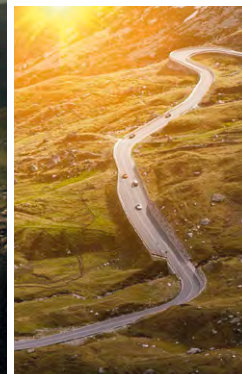


All-out performance

You don't win races by playing nice.² That's why quattro® features one of the most fierce performance features around—torque vectoring. By taking into account your steering input and desired level of acceleration, it can independently brake the inside wheels through a corner and transfer torque to the outside wheels, helping to promote neutral handling.



▼ WIND 54 mph





We don't anticipate your response so much as provide it.

At Audi, we believe you should be the ultimate master of your road-going domain. That's why we created the available Audi drive select system. It gives you the ability to adjust the vehicle's steering, throttle response and transmission shift characteristics with the utmost of ease. And with four modes to choose from, no matter what kind of road comes into question, Audi drive select will let you answer.

1

Comfort mode

Perfect for less-than-perfect roads, this setting adds optimized steering and a closer shift pattern to help provide a more relaxed drive.

2

Dynamic mode

Tighter steering and a more responsive throttle give this setting an aggressive feel and focused performance.

3

Auto mode

The best of both worlds, dialed to automatically adjust settings for a seamless combination of comfort and responsiveness based on your driving style and road conditions.

4

Individual mode

Take the turn your way—this mode allows you to adjust the steering, throttle and transmission upshifts to your style.





↑ ↑

Transmission

From very responsive, quick gear changes to more gradual acceleration, the transmission is at the heart of Audi drive select.

↑ ↑

Throttle-mapping

Depending on the mode of Audi drive select you choose, the throttle can be precisely responsive or a little less so.

↑ ↑

Steering

When you turn the steering wheel, you expect the vehicle to react accordingly. Audi drive select helps give you more input on how that will feel.

Under pressure over efficiency.

There is an old school of thought in the automotive world that bigger is better. More horsepower, greater displacement—these were once the hallmark of the industry. Audi, on the other hand, progressed past this antiquated notion of engine design and adopted a system that refines the driving experience. By utilizing lightweight turbocharged engines, we solved two problems at the same time: greater efficiency and more power than was produced by previous engines.¹ And since lighter vehicles breed better performance, the result is an exhilarating driving experience at every turn.

2.0 TFSI® four-cylinder

This 2.0-liter turbocharged DOHC engine produces 220 horsepower and 258 lb-ft of torque, and combines the valvelift system, Audi FSI® direct injection and turbocharging for great power and overall efficiency.¹

air out to intercooler



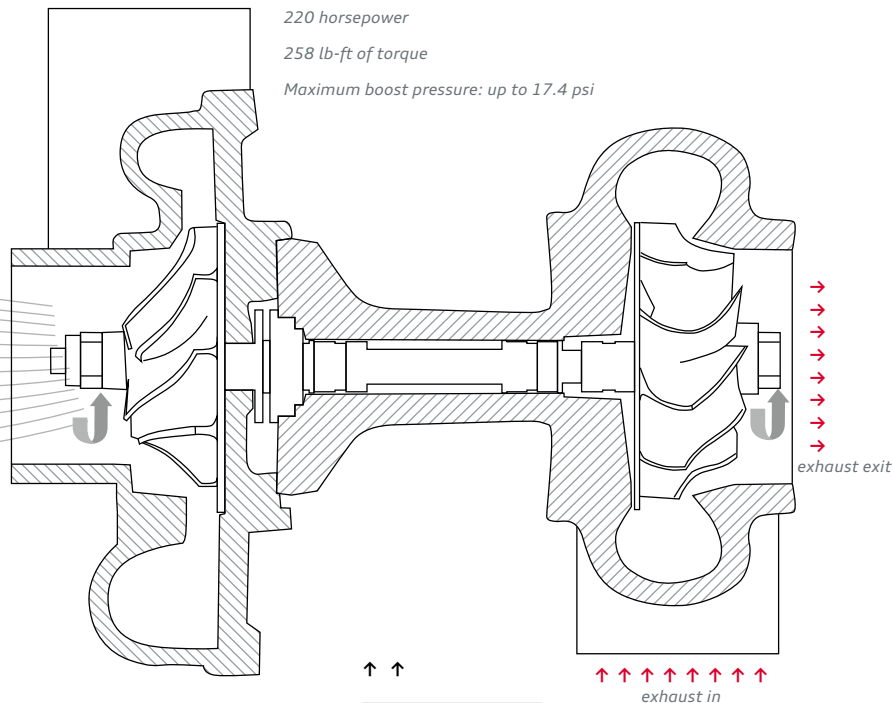
220 horsepower

258 lb-ft of torque

Maximum boost pressure: up to 17.4 psi



Fresh-air intake



Exhaust gas intake

↑ ↑ ↑ ↑ ↑ ↑ ↑ ↑
exhaust in

Exhaust from the engine spins the turbine that is connected by a shaft to a compressor that pressurizes air. The compressor forces this pressurized air into the cylinders at boosted pressures up to 17.4 psi, thus producing more power from a smaller displacement engine.



Performance

The adage “good things come in small packages” has never been more true.

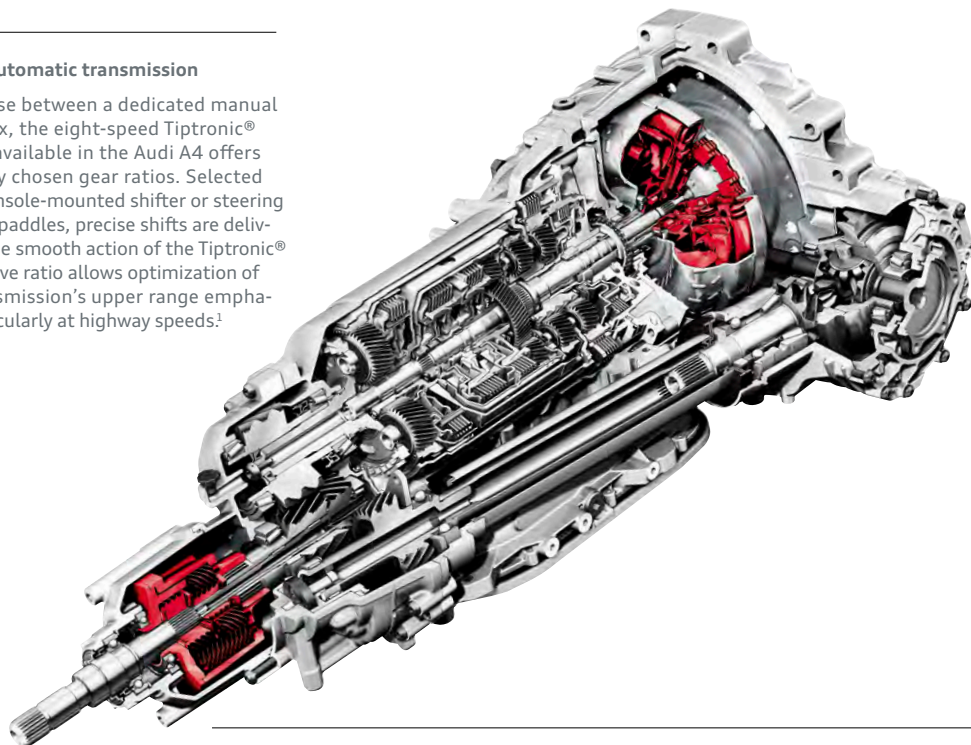
Induction-technology turbocharger

Compressing the airflow to the engine allows more air into the cylinder and, ultimately, more power from each combustion cycle, significantly improving the engine’s power-to-displacement ratio.

¹ EPA estimates not available at time of printing. See www.fueleconomy.gov for updated information. Your mileage will vary.

Eight-speed Tiptronic® automatic transmission

As the perfect compromise between a dedicated manual and an automatic gearbox, the eight-speed Tiptronic® automatic transmission available in the Audi A4 offers eight optimized, carefully chosen gear ratios. Selected automatically or via its console-mounted shifter or steering wheel with available shift paddles, precise shifts are delivered without sacrificing the smooth action of the Tiptronic® automatic. A high final drive ratio allows optimization of lower gears, yet the transmission's upper range emphasizes fuel economy—particularly at highway speeds.¹



gear	
1ST	4.714:1
2ND	3.143:1
3RD	2.106:1
4TH	1.667:1
5TH	1.285:1
6TH	1.000:1
7TH	0.839:1
8TH	0.667:1
	ratio

Six-speed manual transmission

For drivers who crave engaging and dynamic response, the Audi A4 presents an available six-speed manual gearbox that delivers power with vintage Audi finesse. Its short throw and precise ratios add a contemporary element for confident performance on the road.

Audi multitronic® transmission

As a continuously variable transmission, the available Audi multitronic combines the efficiency of a manual gearbox with the convenience of an automatic transmission.¹ And thanks to its variable ratios and adaptive map control, the Audi multitronic always utilizes the optimal rev range of the engine.

Driving to the tune you choose.

The Audi A4 offers three transmission choices that precisely transmit the power produced by the 2.0-liter TFSI engine. With wide gear ratios for smooth shifting and improved efficiency, it doesn't matter which transmission you choose. Available steering wheel-mounted shift paddles for automatic transmissions let you shift up or down with minimal effort, while the six-speed manual transmission gives you the control that performance drivers crave. A shift has been made, and the choice is yours: choose what propels your A4.

We shed light on your blind spots.

With a suite of available driver assist options, we strive to constantly up the ante on driver convenience. Available Audi side assist helps inform you of other vehicles in the lanes next to you, while available Audi adaptive cruise control helps monitor the distance between you and the vehicle ahead, and adjusts your speed appropriately to keep you moving smoothly. There are also the simple things, like parking system plus, which adds a rear view camera and rear acoustic parking sensors to help ease you into that spot. It's another testament to the effort that Audi puts into helping ensure that you're not the only one keeping an eye on the road.



Driver Assist

We're solving problems before you even know you have them.



Audi adaptive cruise control

Everyone has their own comfort zone. The available Audi adaptive cruise control helps maintain a driver-selected distance from the vehicle in front by using a special long-range radar sensor. The system constantly measures the space between your vehicle and the vehicle ahead and helps maintain it by automatically adjusting your speed. Once the road ahead is clear, the vehicle effortlessly resumes the previously preset speed, helping to make your drive that much more relaxing.

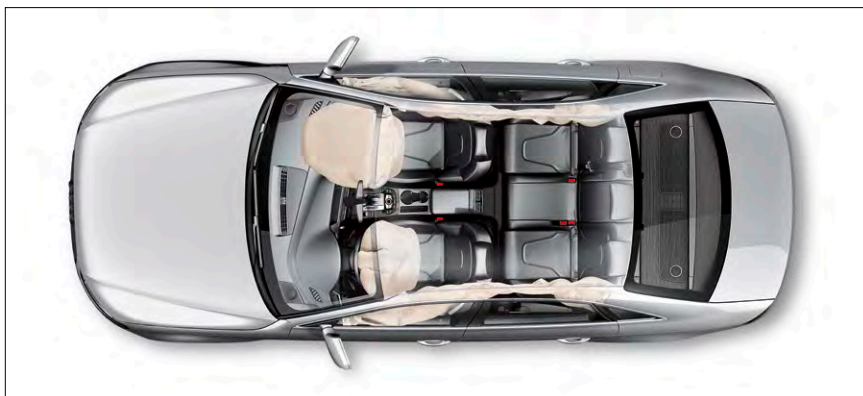
Audi side assist

The available Audi side assist uses radar sensors and two different optical warnings to help keep the driver informed about what is approaching from hard-to-see angles behind and to the side of the vehicle.



We don't see safety as an option, or a luxury.

We decided that, regardless of size, strong should be a more flexible concept. High-strength steel helps add a measure of security while enhancing overall handling and performance. The six standard airbags¹ feature technology that is designed to deploy airbags based on seat position, while specially constructed crumple zones give way upon impact to help mitigate potential injury in a collision. All of this, combined with the rigidity of laser seam-welded joints that enhance the strength of every Audi we make, helps diminish the impact of an unavoidable event.



Dramatization²



Safety

Working to spread a “bend don’t break” philosophy.

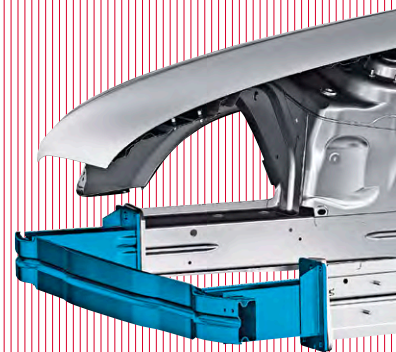
Six standard airbags

With six standard airbags, including front-impact and thorax side airbags for both driver and front passenger, and available rear passenger thorax side airbags, you’ll feel practically surrounded.¹ And that’s a good thing.

Brakes

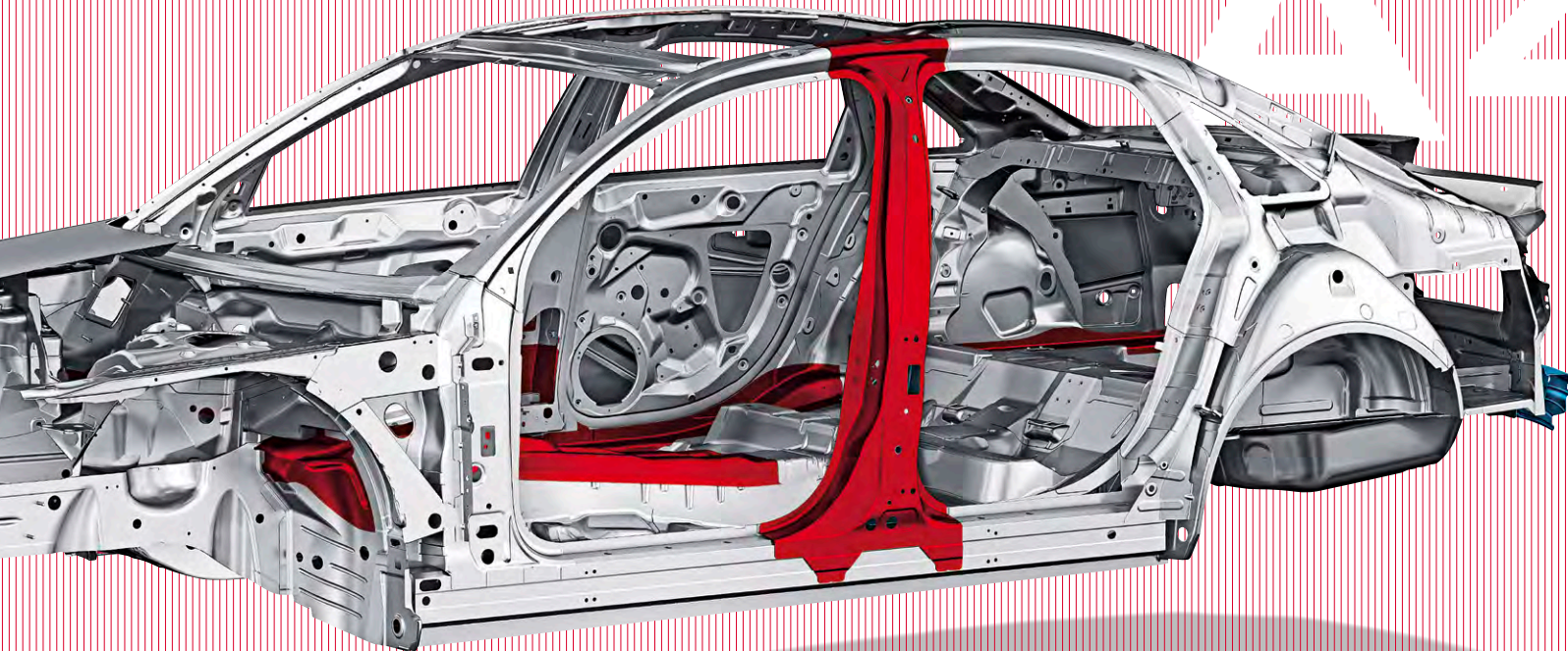
Whether you’re on the open road or off the beaten path, ESC with ABS helps to keep the vehicle traveling in its intended direction by moderating brake pressure at all four wheels to help maintain traction, minimize skids and optimize control.

1 Airbags are supplemental restraints only and will not deploy under all crash circumstances. Always use safety belts and seat children only in the rear, using restraint systems appropriate for their size and age. 2 This is a dramatization and does not depict what will happen in a collision. All bags will not inflate simultaneously in real-world collisions, and, if multiple bags do deploy, they will be in various stages of inflating/deflating and will never all be inflated at the same time.



High-strength steel

High-strength steel in the chassis rail side-member and B-pillar helps protect the driver and passengers in the event of a collision.



Crumple zones

Knautschzone may be an ugly word, but it's a beautiful technology. German for "crumple zone," this ingenious safety feature helps dissipate the energy from a collision by spreading the impact forces around the passenger cell and away from its occupants. In doing so, it also slows the vehicle's deceleration rate, which helps to further lessen the force of impact.

Car consciousness.

We believe intelligence is key to a higher form of luxury. You can see this philosophy fully represented in the available Audi MMI® system. Simply put, it's an intuitive system that intimately connects you to almost every facet of the vehicle. It's the nerve center of your vehicle, allowing you to control virtually every interior function of your Audi with a simplified source control button system. From the Audi MMI Navigation plus, to the sound system, to media, MMI helps you access information with a few easy clicks. And even without it, you can pair your compatible phone with the vehicle for added convenience. With this kind of brainpower onboard, you can leave the little stuff to us, and just concentrate on how good it feels to drive.



MMI System

We've brought the backseat driver front and center.

SiriusXM® Satellite Radio

Go ahead. Crisscross the country. We assure you, you'll never run out of entertainment options, with over 130 channels of music, talk, sports and news.¹

Audi media

The media function opens up a world of options when equipped with the Audi MMI Navigation plus, allowing you to control the Audi music interface, Secure Digital (SD) card slots, hard disk drive (HDD) audio jukebox or DVD, and BLUETOOTH® streaming audio.^{1,2,3}

Audi MMI Navigation plus

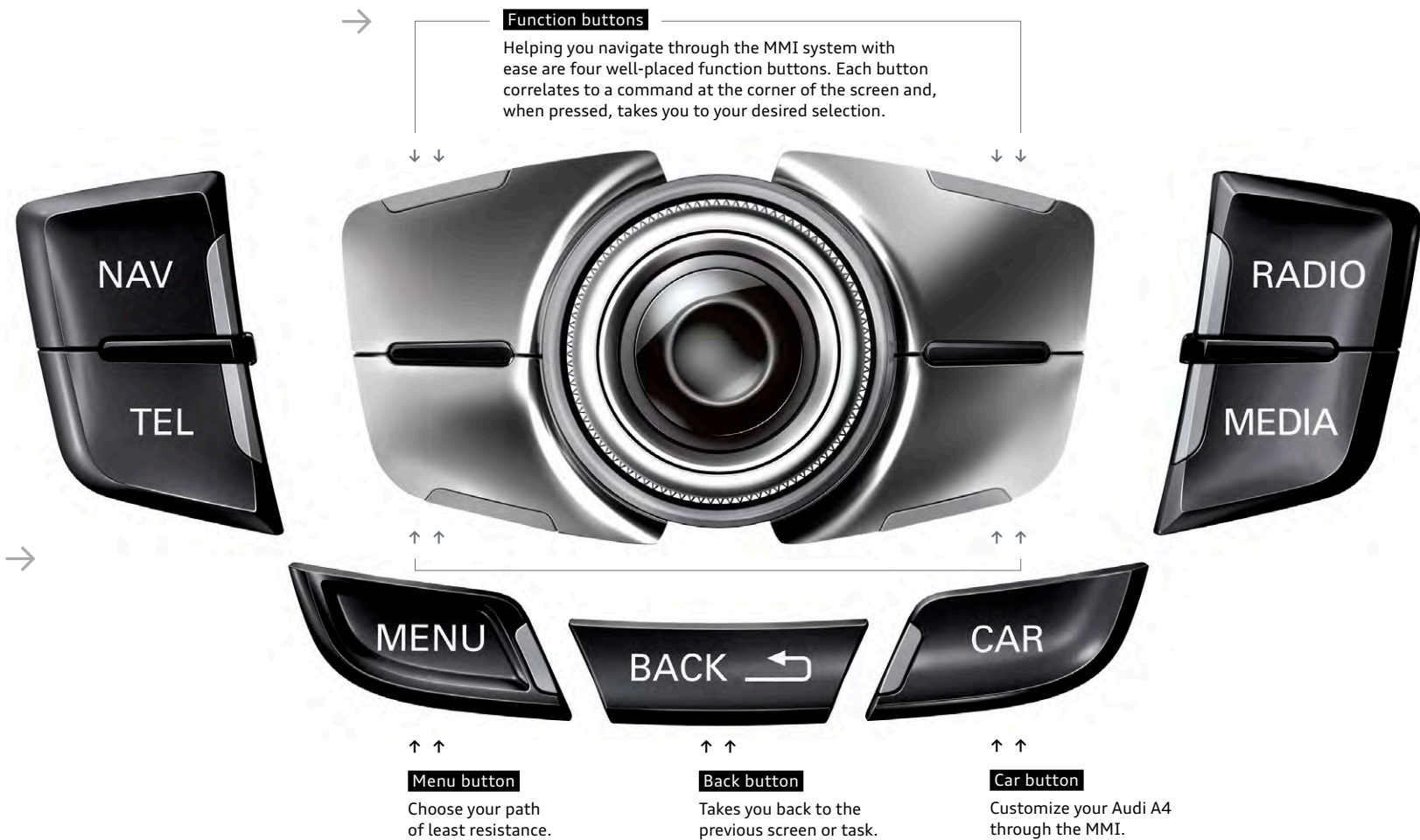
Count on the available advanced navigation system to home in on your destination with stunning precision while putting a little more depth in your journey with help from the available Audi connect®.¹

BLUETOOTH® wireless technology

Unlock your mobile phone's potential through the MMI system. Simply pair them up and start enjoying near complete control at the touch of a button.³



1. See Infotainment/Technology section of the Featured Content page for important information regarding Audi MMI® Navigation plus and required SiriusXM® subscriptions. 2. Always pay careful attention to the road, and do not drive while distracted. The features and technologies discussed above are optional, may require an additional subscription with separate terms and conditions, and should be used only when it is safe and appropriate. The Wi-Fi® hotspot feature is intended for passenger use only. 3. Requires compatible phone.



If nothing else, you know your car is listening to you.

Don't reach—relax. While touchscreens are seemingly everywhere, they don't need to be in your vehicle. With available Audi connect®, you may never have to reach out again.¹ Thanks to Google Voice™ Local Search, Audi connect allows you to search Google™ by simple voice commands. The crisp display is nestled farther up, closer to the windshield, so your eyes don't have to focus and refocus between the screen and the road ahead of you. For those times when you are feeling tactile, we've placed toggle buttons near the gear shifter, where your hand naturally rests while you drive. So while other automobile manufacturers still want you to reach out, we've found a few ways for you to make information a lot more accessible while your hands are on the wheel.²



SiriusXM® Traffic

Get traffic information overlaid onto available 3D satellite imagery to visualize a true aerial view of your route, and let the Audi MMI Navigation plus system reconfigure your route to avoid traffic.^{2,3}



News feeds

Stay on top of the news by having headlines and stories delivered right to your Audi MMI® display.²

POI

Point-of-interest

The point-of-interest search with voice control means that the digital world is with you on every journey.²

myAudi

myAudi features

Plan travel from your personal computer. Send your desired destinations to your vehicle ahead of time and access your route from your vehicle later.²



Mobile Wi-Fi® hotspot

Provides high-speed connectivity for up to eight passenger devices through an onboard wireless hub.²



¹ Always pay careful attention to the road, and do not drive while distracted. The features and technologies discussed above are optional, may require an additional subscription with separate terms and conditions, and should be used only when it is safe and appropriate. The Wi-Fi® hotspot feature is intended for passenger use only. ² Audi connect® not available on Audi A4 Premium. ³ See Infotainment/Technology section of the Featured Content page for important information regarding required SiriusXM® subscriptions.



Google Earth™ with 3D satellite imagery

With Google Earth™ integration, you'll enjoy 3D satellite imagery, including Google Maps Street View, displayed right on the Audi MMI display.²



Weather information

Current local conditions and forecasts for your destination can help you prepare for your trip.²



Google Voice™ Local Search

Simply tell your Audi what you are in the mood for, then let the cloud-processing power of Google™ speech recognition interpret your request and bring up a list of destinations in the area of your choice.²



Google Maps Street View

With Google Maps Street View, your vehicle can show you a driver's-eye view of your destination right before you arrive so it's easy to recognize.²



Parking information

Search for parking in your area of interest, check space availability and set your selection as a destination to navigate directly to the garage entrance.²



City events

Get information about current events, exciting locations and places of interest at your travel destination, current location or other chosen location instantly.²



Travel info

Discover local landmarks in your area of interest, set them as your destinations, and let your vehicle lead the way as you explore the world around you.²





Sound

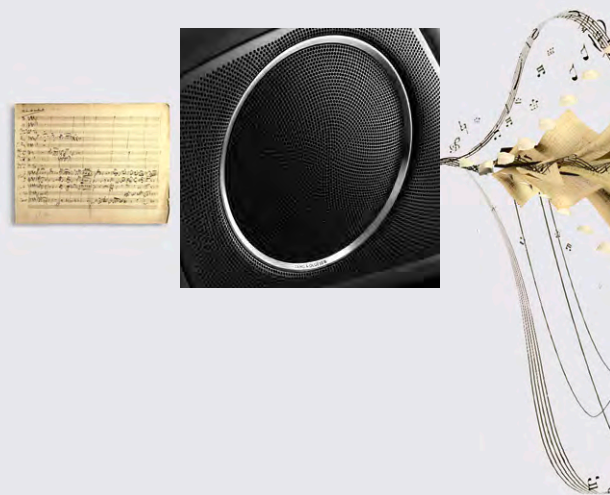
Audi is Latin for "listen,"
so you know we take sound
very seriously.

When even a German lullaby is an ode to sound engineering.

It would be an interesting challenge, a note-perfect Brahms' Lullaby delivered through the tuned speakers of an Audi concert radio system versus the exhilaration of the passing lane. Either way, performance wins. But it goes way beyond the gentle tones of a German composer. Audi sound engineers don't simply make the cabin acoustics sound perfect for your music, they make the drivetrain sing. Or, if not sing, then put it in harmony with every other element of the driving experience. From the sound of a shutting door, to the click of a turning knob, to the full integration of an available Bang & Olufsen® Sound System, there's an orchestra of engineering that fills your cabin with faithfully rendered, thrilling sound. Whatever it is you are looking for, Audi sculpts sounds in a way that matches your mood, even when you need soothing while in traffic.

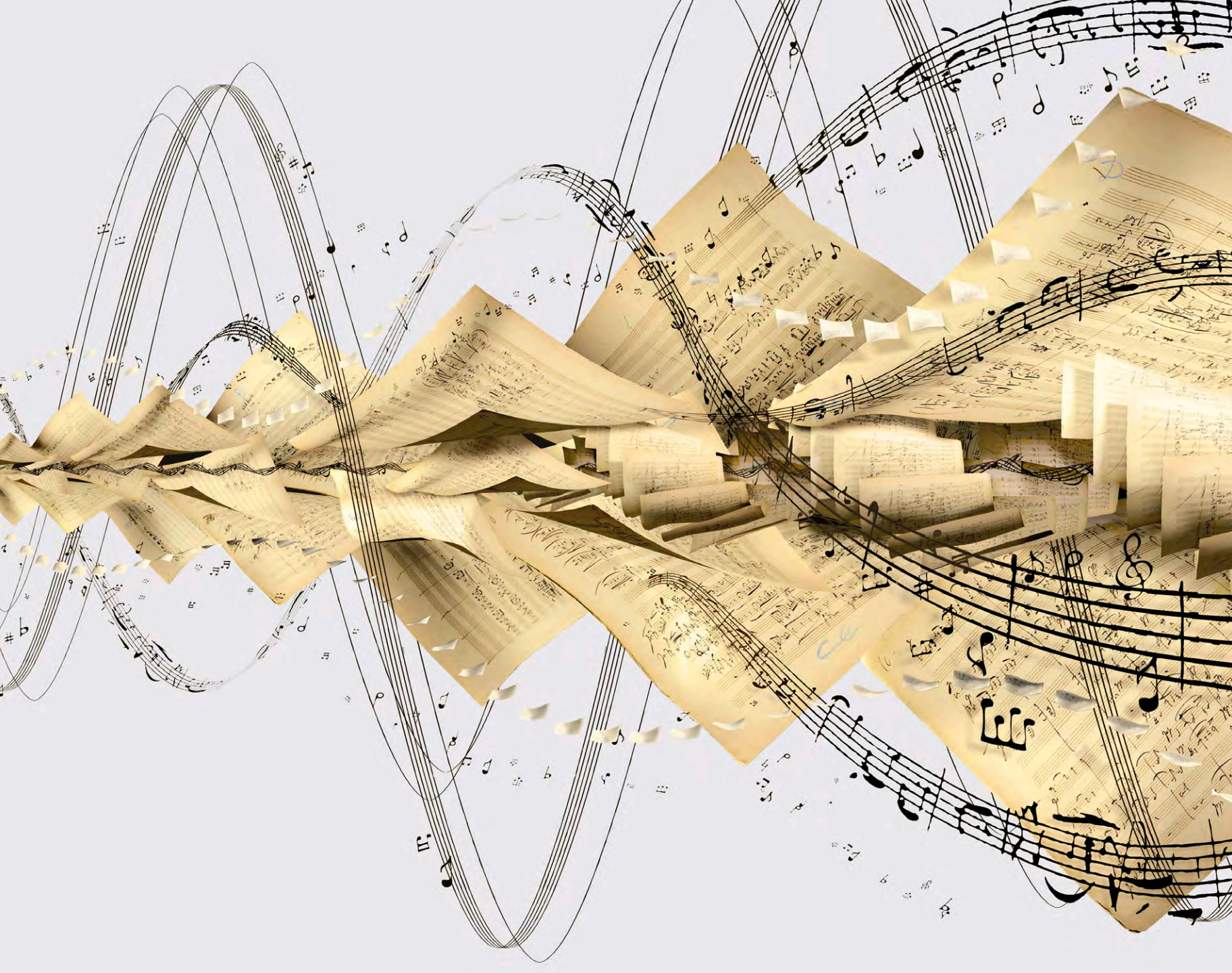
Bang & Olufsen® Sound System

Dedicated to the idea of "honest music reproduction," Bang & Olufsen® is a sound engineer's dream. Through an available 505-watt, 14-speaker system perfectly integrated within your Audi, Bang & Olufsen® is set on transcending the limits of audio technology. By automatically adjusting volume and timbre balance to changing ambient noise levels, and offering richly tuned acoustics, you'll hear the truth about how good life can sound in your Audi.



14 speakers

Optimized sound flows through strategically placed speakers around the cabin. Hear it, and you'll instantly become engrossed in the tiniest detail and warmth of the sound.



S4



ENGINE // 3.0-liter supercharged TFSI® V6 developing 333 hp and 325 lb-ft of torque

DRIVETRAIN // Audi quattro® all-wheel drive, available sport differential, six-speed manual transmission or an available seven-speed Audi S tronic® dual-clutch transmission

CHASSIS // S4 tuned sport suspension, Audi drive select and available dynamic steering

BRAKES // 13.6" ventilated front disc brakes with S4 logo, 13.0" ventilated rear disc brakes

PERFORMANCE // Top track speed of 155 mph,¹ acceleration from 0 to 60 in 4.9 seconds

¹ Top track speed is electronically limited in the U.S. Obey all speed and traffic laws.

Addition by addition.

It's a difficult challenge to add to the precision driving of an Audi A4, but we've found a way. The Audi S4 is everything the A4 is, but with a proverbial B12 boost. The powerful Audi TFSI V6 that's encased under the hood of the S4 produces a thrilling 333 horsepower while delivering the kind of suspension and performance enhancements to ensure that driving the S4 is much more than a run-of-the-mill performer. And with your choice of six-speed manual transmission or the available seven-speed Audi S tronic® dual-clutch transmission, you'll have control over exactly what helps move the S4 to move you. It is proof of the ironclad law of more being a net plus.

Audi Sport

The story doesn't stop here. There's more on the full range of S, RS, and R8 Audi performance models in the **2014 Audi Sport brochure**. See your dealer or go to audiusa.com for details.

Exterior Colors

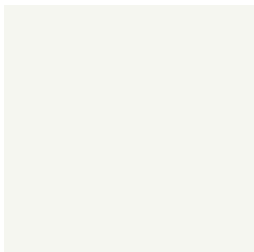
Brilliant Black



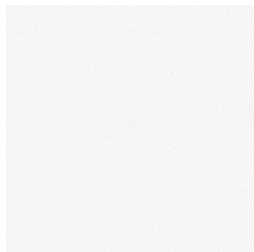
Brilliant Red



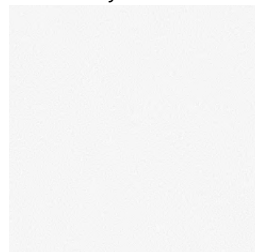
Ibis White



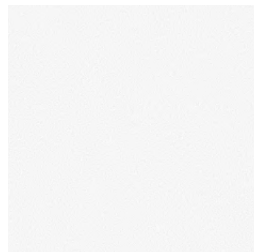
Cuvée Silver metallic



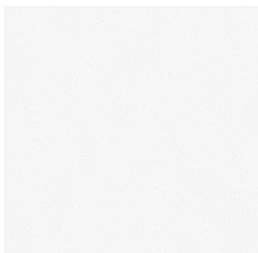
Dakota Gray metallic



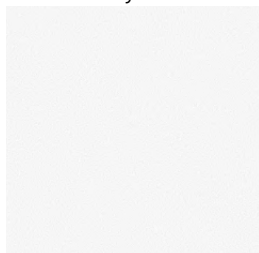
Glacier White metallic



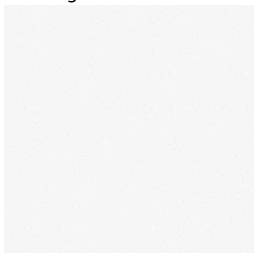
Ice Silver metallic



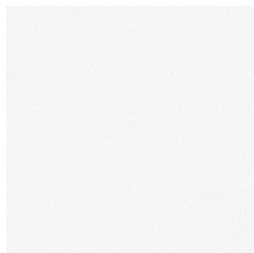
Monsoon Gray metallic



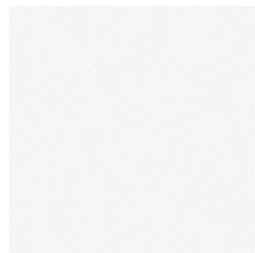
Moonlight Blue metallic



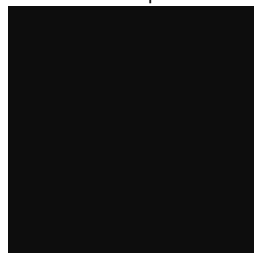
Scuba Blue metallic



Volcano Red metallic



Phantom Black pearl



Interior Colors | Seat Selections

Standard Seat



Sport Seat



Black leather



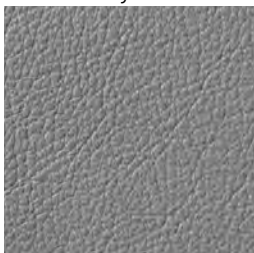
Standard, Sport

Chestnut Brown leather



Standard, Sport

Titanium Gray leather



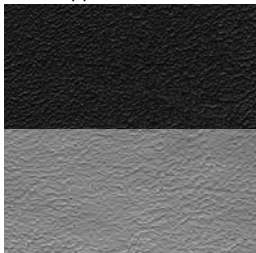
Standard, Sport

Velvet Beige leather



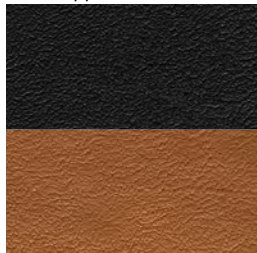
Standard

Black/Cloud Gray
Fine Nappa leather



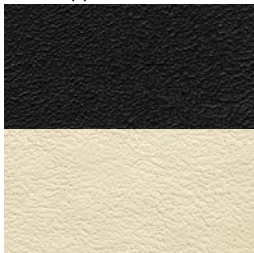
Audi exclusive line package,
Sport

Black/Cognac
Fine Nappa leather



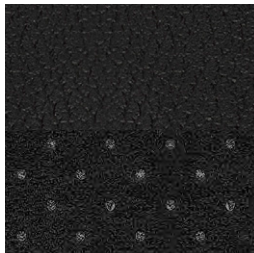
Audi exclusive line package,
Sport

Black/Alabaster White
Fine Nappa leather



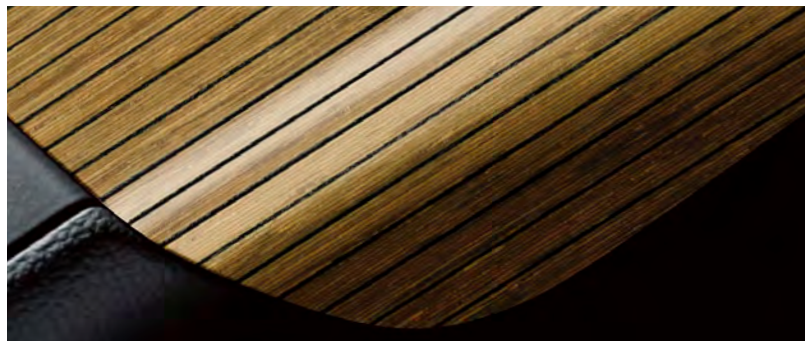
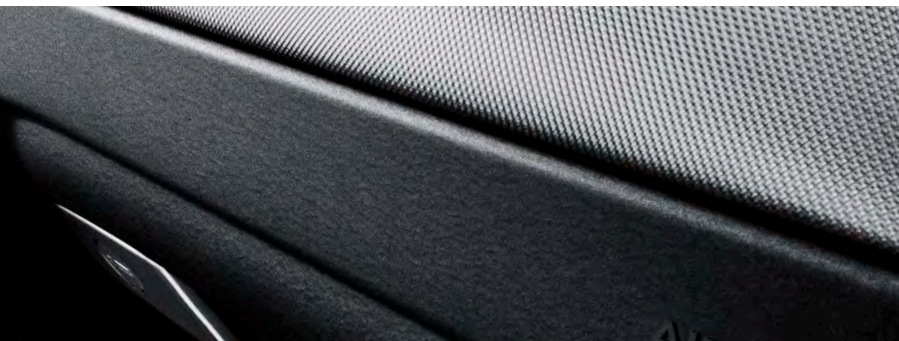
Audi exclusive line package,
Sport

Black leather/
Perforated Alcantara®

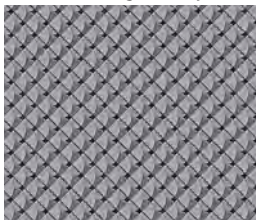


Audi S line® Interior package,
Sport

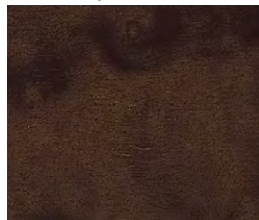
Decorative Inlays



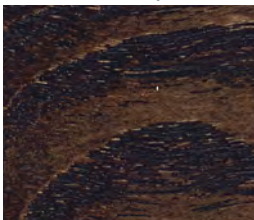
Aluminum Trigon inlay¹



Dark Brown Walnut Wood inlay¹



Fine Grain Ash Natural Brown Wood inlay¹



Layered Oak Wood inlay¹



Brushed Aluminum inlay¹



Audi S line® Interior package,
Audi exclusive line package

¹ Decorative inlay options will vary based on model and interior color combination. See your dealer for details.

Wheels

17" 10-spoke-star design
245/45 all-season tires



A4 Premium

18" 10-spoke-dynamic design
245/40 all-season tires



A4 Premium (Audi S line® Style package)

18" 10-spoke-Audi exclusive RS design
245/40 all-season tires



A4 Premium plus and Prestige

19" 5-arm-rotor design (Titanium finish)
255/35 summer performance tires²



A4 Premium plus and Prestige
(Black Optic package)

² Tires are supplied and warranted by their manufacturer. High-performance tires are designed for optimum performance and handling in warm climates. They are not suitable for cold, snowy or icy weather conditions. If you drive under those circumstances, you should equip your vehicle with all-season or winter tires, which offer better traction under those conditions. We suggest you use the recommended winter or all-season tire specified for your car or its equivalent. These high-performance tires also have a lower aspect ratio that aids performance and handling; however, in order to avoid tire, rim or vehicle damage, it is important that the inflation pressure is regularly checked and maintained at optimum levels. Please also remember in making your selection that, while these tires deliver responsive handling, they may ride less comfortably and make more noise than other choices. Finally, these tires may wear more quickly than other choices.

Technical Specifications

Engineering | Performance

A4 2.0T

Engine type	Four-cylinder
Engine block/Cylinder head	Cast-iron/Aluminum-alloy
Displacement (cc)/Bore and stroke (mm)	1,984/82.5 x 92.8
Horsepower (@ rpm)	220 @ 4,450–6,000
Torque (lb-ft @ rpm)	258 @ 1,500–4,300
Compression ratio	9.6:1
Valvetrain	16-valve DOHC with valvelift system
Induction/Fuel injection	Turbocharged/TFSI®
Acceleration with Audi multitronic®/manual/Tiptronic® transmission (0–60 mph)	6.6/6.4/6.2 seconds
Top track speed ¹	130 mph

Transmission | Drivetrain

Audi multitronic® continuously variable transmission with front-wheel drive (Gear ratios: 1st: 2.436, 2nd: 1.626, 3rd: 1.231, 4th: 0.976, 5th: 0.783, 6th: 0.628, 7th: 0.499, 8th: 0.382, Reverse: 2.919, Final drive: 4.612)	■
Six-speed manual transmission with Audi quattro® all-wheel drive (Gear ratios: 1st: 3.778, 2nd: 2.050, 3rd: 1.321, 4th: 0.970, 5th: 0.757, 6th: 0.625, Reverse: 3.333, Final drive: 3.693)	Available
Eight-speed Tiptronic® automatic transmission with Audi quattro® all-wheel drive (Gear ratios: 1st: 4.714, 2nd: 3.143, 3rd: 2.106, 4th: 1.667, 5th: 1.285, 6th: 1.000, 7th: 0.839, 8th: 0.667, Reverse: 3.317, Final drive: 2.848)	Available

Body | Suspension | Chassis

Fully galvanized steel unibody with aluminum hood and multistep anti-corrosion protection	■
Five-link front suspension	■
Trapezoidal-link rear suspension	■
Sport suspension calibration (Premium plus and Prestige)	Available
Ventilated front disc/Solid rear disc brakes (in)	12.6/11.8
Electromechanical power steering system	■
Dynamic steering (Prestige)	Available
Steering ratio	15.9:1
Turning diameter, curb-to-curb (ft)	37.7

Exterior measurements**A4 2.0T**

Wheelbase (in)	110.6
Length (in)	185.1
Height (in)	56.2
Overall width with mirrors (in)	80.3
Overall width without mirrors (in)	71.9
Track front/rear (in)	61.6/61.1
Curb weight with Audi multitronic® transmission (lb)	3,516
Curb weight with manual transmission (lb)	3,627
Curb weight with Tiptronic® transmission (lb)	3,693
Drag coefficient (Cw)	.31

Interior measurements

Head room with sunroof (in, front/rear)	38.0/37.5
Head room with sunshade (in, front/rear)	36.9/37.5
Leg room (in, front/rear)	41.3/35.2
Shoulder room (in, front/rear)	55.5/54.3
Cargo volume (cu ft, rear seatbacks up/folded)	12.4/34.0
Seating capacity	5

EPA mileage estimates | Capacities | Emissions

Audi multitronic® transmission (city/highway/combined) ²	NA
Manual transmission (city/highway/combined) ²	NA
Tiptronic® automatic transmission (city/highway/combined) ²	NA
Engine oil (qt)	4.9
Fuel (gal)	16.1
Recommended fuel	Premium
Emissions rating	ULEV II



Technical specifications and featured content for Audi S4 model can be found in the **2014 Audi Sport brochure**. See your dealer or go to audiusa.com for details.

¹ Top track speed is electronically limited in the U.S. Obey all speed and traffic laws. ² EPA estimates not available at time of printing. See www.fueleconomy.gov for updated information. Your mileage will vary.

Featured Content

Safety | Security

	Premium	Premium plus	Prestige
Driver and front passenger dual-stage airbags, front thorax side airbags and Sideguard® head curtain airbags ¹	■	■	■
Rear-passenger thorax side airbags ¹	Available	Available	Available
Front passenger occupant detection—for airbags ¹	■	■	■
Safety belt reminder for driver and front passenger	■	■	■
Lower Anchors and Tethers for CHildren (LATCH) in rear seats	■	■	■
Power central locking system with safety unlock feature if airbags deploy	■	■	■
Electronic Stability Control (ESC) with traction control (ASR)	■	■	■
Anti-lock Brake System (ABS) with Electronic Brake-pressure Distribution (EBD) and brake assist	■	■	■
Tire-pressure monitoring system	■	■	■
Electromechanical parking brake	■	■	■
Anti-theft alarm system with immobilizer	■	■	■

Exterior

Audi Singleframe® grille	■	■	■
Gloss Black Audi Singleframe® grille	—	Available	Available
Halogen headlights with daytime running lights	■	—	—
Xenon plus headlights with LED daytime running light technology	Available	■	—
Adaptive xenon plus headlights with LED daytime running light technology	—	—	■
Headlight washing system	Available	■	■
Automatic headlights	■	■	■
Front and rear fog lights	■	■	■
LED taillight technology	Available	■	■
Power-adjustable heated exterior side mirrors	■	—	—
Power-adjustable, auto-dimming, heated exterior side mirrors with memory	—	■	■
LED turn indicator light technology integrated into the exterior side mirrors	■	■	■
Heated windshield washer nozzles	■	■	■
Matte Black trim around exterior windows	■	—	—
Aluminum trim around exterior windows	Available	■	■
Gloss Black trim around exterior windows	—	Available	Available
Dual exhaust outlet (driver's side)	■	■	■
Audi S line® exterior appearance	Available	■	■

■ Standard — Not applicable

Interior

	Premium	Premium plus	Prestige
Automatic climate control	■	—	—
Three-zone automatic climate control	—	■	■
Four-spoke multifunction steering wheel	■	■	■
Three-spoke multifunction sport steering wheel (with shift paddles on automatic)	—	Available	Available
Three-spoke multifunction flat-bottom sport steering wheel (with shift paddles on automatic)	—	—	Available
Tilt and telescopic manually adjustable steering column	■	■	■
Auto-dimming interior rear view mirror with digital compass	—	■	■
Leather-wrapped shift knob	■	■	■
Folding and sliding front center armrest with height adjustment	■	■	■
Eight beverage holders (four cup and four bottle)	■	■	■
Decorative interior inlays (see Decorative Inlays page for more detail)	■	■	■
Aluminum door sill inlays	■	■	■
Front and rear footwell LED lighting technology	■	■	■
Front and rear floor mats	■	■	■
Ambient LED interior lighting technology	■	■	■
Black cloth headliner (with Chestnut Brown leather or Audi S line® Interior package)	Available	Available	Available
Dual front sun visors with lighted vanity mirrors	■	■	■
Power windows with one-touch up/down operation and pinch protection	■	■	■
Manual rear-side window and power rear window sunshades	—	—	Available
Sunroof	■	■	■

Seating

Leather seating surfaces (see Interior Colors page for more detail)	■	■	■
Leather/Alcantara® seating surfaces (see Interior Colors page for more detail)	—	—	Available
Audi exclusive line bicolor Fine Nappa leather seating surfaces (see Interior Colors page for more detail)	—	Available	Available
Eight-way power front seats and four-way power lumbar adjustment for driver	■	■	■
Twelve-way power front sport seats, including four-way power lumbar adjustment	—	Available	Available
Driver seat memory	—	■	■
Heated front seats	Available	■	■
Fixed rear seatback	■	—	—
Split folding 60/40 rear seatbacks	Available	■	■

¹ Airbags are supplemental restraints only and will not deploy under all crash circumstances. Always use safety belts and seat children only in the rear, using restraint systems appropriate for their size and age.

Featured Content

Infotainment | Technology

	Premium	Premium plus	Prestige
Audi MMI® Navigation plus with voice control system ¹	Available	Available	■
Audi connect® with six-month trial subscription ²	—	Available	■
Driver information system	■	■	—
Color driver information system	Available	Available	■
Audi concert radio with ten speakers and single CD player with MP3 playback capability	■	■	—
Bang & Olufsen® Sound System with 14 speakers and 505 watts	—	Available	■
HD Radio™ Technology	Available	Available	■
SiriusXM® Satellite Radio with 90-day trial subscription ³	■	■	■
SiriusXM® Traffic with four-year subscription ³	Available	Available	■
SD card slot with 32GB operating capacity (dual slots if equipped with Audi MMI® Navigation plus)	■	■	■
Audi music interface with iPod® integration	■	■	■
BLUETOOTH® streaming audio ⁴	Available	Available	■
BLUETOOTH® wireless technology preparation for mobile phone ⁴	■	■	■
Three 12-volt power outlets	■	■	■
Garage door opener (HomeLink®)	■	■	■
Audi advanced key—keyless start, stop and entry ⁵	—	■	■
Cruise control with coast, resume and accelerate features	■	■	■
Audi adaptive cruise control	—	—	Available
Audi side assist	—	Available ⁶	■
Audi drive select	—	Available	Available
Parking system plus with rear view camera	—	Available	■
Rain/light sensor for automatic windshield wipers and headlights	■	■	■

■ Standard — Not applicable

1. Audi MMI® Navigation plus depends on signals from the worldwide Global Positioning Satellite network. The vehicle's electrical system and existing wireless and satellite technologies must be available and operating properly for the system to function. The system is designed to provide you with suggested routes in locating addresses, destinations and other points of interest. Changes in street names, construction zones, traffic flow, points of interest and other road system changes are beyond the control of Audi of America, Inc. Complete detailed mapping of lanes, roads, streets, toll roads, highways, etc., is not possible, therefore you may encounter discrepancies between the mapping and your actual location. Please rely on your individual judgment in determining whether or not to follow a suggested Audi MMI® Navigation plus route. For mapping updates please see your Audi dealer or call 1-800-FOR-AUDI for details. 2. See the Audi connect® page for important information about Audi connect®. 3. SiriusXM® Satellite Radio and Traffic subscriptions sold separately or as a package after trial expires. SiriusXM® Traffic service available in select markets. Subscriptions are governed by SiriusXM® Customer Agreement (see www.siriusxm.com) and are continuous until you call SiriusXM® to cancel. SiriusXM® U.S. Satellite Service available only to those 18 and older in the 48 contiguous U.S.A., D.C. and Puerto Rico (with coverage limitations). 4. Requires compatible phone. 5. Some Audi models are equipped with a keyless ignition feature. The details as to how the system works can vary, and Audi owners should consult their owner's literature or an authorized Audi dealer if they have further questions about the operation of this feature. Please note that Audi warns against leaving the vehicle unattended with the engine running, particularly in enclosed spaces. 6. Delayed availability.

Looks can't be deceiving.

We can all agree that Audi makes the most beautifully designed vehicles on the road. Even the competition has a complex, but we've gone a step further to make the Audi A4 S line® Interior package and Black Optic package an exciting departure from an already perfectly designed sport sedan. So while many have relied on their looks to compensate for their performance, we just took another step to make your car look a little closer to how it feels.



Accessories

Add a new point of view, a dash of distinction and the ultimate in self-expression with Audi Genuine Accessories. Whether you load the cargo carrier with climbing gear or add a set of sporty new wheels, we've got the accessories that will help enhance every facet of your lifestyle. Designed for seamless compatibility with your Audi,



Aluminum bike rack

This locking holder fits 20- to 80-mm bike frames with both wheels on the bike and helps keep the bike upright as you secure it in place.^{2,3}

19" 5-arm hollow-spoke wheels

Experience the high-performance beauty of this eye-catching design. The hollow-spoke feature results in a lightweight wheel that allows for more precise handling. Five-spoke design features a machined face with Gloss Black spokes. Also available in other colors and finishes.



Ski and snowboard rack

Push-button, keyed locks open and close easily. Rubber-cushioned aluminum bars hold securely. Standard attachment (shown) holds two sets of skis or two snowboards. Deluxe attachment holds up to three sets of skis or four snowboards.^{2,3}

18" 15-spoke wheels

An impressive, clean, drop-center, deep-dish design makes this 15-spoke wheel the perfect complement to the Audi A4. Metallic Silver spokes with polished lip. Also available with Ibis White spokes.



Small cargo carrier

Extra carrying capacity (13 cu ft) comes in a smart size: 55" long, 35" wide, 14" high.²

18" 5-spoke-rotor wheels

Add the finishing touch with this dramatic design. Five-spoke design gives the A4 an even sportier stance.



Other accessories not shown

→ Audi Genuine Sport and Design Accessories

→ Your Audi vehicle features a bold, aggressive stance and strong, stunning lines. Enhance it by adding Audi Genuine Sport and Design Accessories. All are carefully scrutinized in the design and development process. So while they're striking in appearance, they've also passed rigorous quality assessments, including corrosion testing. If you're looking for a bolder appearance or a finishing touch, there is a solution designed by Audi that makes every mile more enjoyable—and more yours.

Audi Genuine Alloy Wheels

Strike the perfect balance between breathtaking design and awe-inspiring performance with Audi Genuine Alloy Wheels. Audi experts have meticulously designed these wheels especially for each Audi model. They're engineered to the highest standards and endure rigorous testing to help ensure long-term quality. Experience eye-catching style that is yours and yours alone. Nothing enhances the bold, dynamic look of your Audi vehicle faster.

all pieces are backed by your vehicle's 4-year/50,000-mile limited warranty or the accessory's 12-month/12,000-mile limited warranty, whichever extends longer from the accessory purchase date! If you're looking to personalize or protect, Audi offers an intelligent solution.



Audi S4 Alu-optic trim package

Includes two red or carbon fiber "Supercharged" fender badges, plus Aluminum-optic stone guards that match the side mirrors and mount between the wheel wells.

Rear trunk-lid spoiler

Add sporty flair to the A4. Primed for painting or available pre-painted for a perfect color match and added convenience. Consult your authorized Audi dealer for available colors.⁴

Valve stem caps

Emblazoned with the iconic Audi rings, these handsome caps complement the unique design of the wheels on your Audi.

A4/S4 all-weather floor mats

Deep-ribbed, channeled design helps protect the floor and carpeting from water, mud, sand and snow. Black mats feature the vehicle logo and are available in sets of two for front or rear.

Audi TravelSpace Transport Accessories

You go almost everywhere. Give your Audi the proper invitation to be part of your adventures. Never leave the necessary gear behind. Bring it with Audi TravelSpace Transport Accessories. The list includes bike racks, ski racks, a variety of watersports equipment carriers and various sizes of cargo carriers. Wherever you go, make sure almost everything fits with a variety of intelligent and innovative solutions. Accessories designed for your life—the passionate, active part.

Audi Genuine Electronics Accessories

The illuminating technology that graces each Audi vehicle provides the inspiration for Audi Genuine Electronics Accessories. Similarly, all of these accessories are impressively advanced and inspiring. Our audio options let you enhance your listening pleasure. Other accessory options help promote more convenient travel. All are designed and tested to help ensure compatibility with the vehicle's electrical systems, allowing you to enjoy every aspect of Audi technology with almost all your senses. Demand the best and drive with added confidence.

Audi Guard Comfort and Protection Accessories

Help protect what you love. Audi Guard Comfort and Protection Accessories offer functional, practical items that help keep your Audi in pristine condition. Choose from such useful items as trunk liners that help make clean-up quick and easy, or an easy-to-use storage cover that helps shield the vehicle. Use them all to help reduce wear and tear and keep the vehicle looking like new—inside and out. All are engineered to stringent Audi standards, so you can be assured of their quality and durability.



2014 | A4

Audi of America
Audiusa.com
Facebook.com/Audi

Note: A word about this brochure. Audi of America, Inc., believes the specifications in this brochure to be correct at the time of printing. However, specifications, standard equipment, options, fabrics, and colors are subject to change without notice. Some equipment may be unavailable when your vehicle is built. Please ask your dealer for advice concerning current availability of standard and optional equipment, and your dealer will verify that your vehicle will include the equipment you ordered. Vehicles in this brochure are shown with optional equipment. See your dealer for complete details on the New Vehicle Limited Warranty, twelve-year limited warranty against corrosion perforation, and Audi 24/7 Roadside Assistance. (Roadside assistance coverage provided by Road America in the U.S. Certain conditions apply; see your dealer for details.) Tires supplied by various manufacturers. "Audi," all model names, "ASF," "Audi connect," "Audi Sport," "cylinder on demand," "FSI," "MMI," "multitronic," "quattro," "Singleframe" and the Singleframe grille design, "S line," "S tronic," "TFSI," "Truth in Engineering," "ultra," and the four rings logo are registered trademarks of AUDI AG. "Alcantara" is a registered trademark of Alcantara S.p.A. "Bang & Olufsen" is a registered trademark of Bang & Olufsen. The BLUETOOTH word mark and logos are owned by the Bluetooth SIG, Inc., and use of any such marks by AUDI AG is under license. "Google," "Google Earth" and "Google Voice" are trademarks of Google Inc. "HD Radio" and the HD Radio logo are proprietary trademarks of iBiquity Digital Corporation. "HomeLink" is a registered trademark of Johnson Controls Technology Company. "iPod" is a registered trademark of Apple Inc. "SiriusXM" and all related marks and logos are trademarks of Sirius XM Radio Inc. and its subsidiaries. "TDI" is a registered trademark of Volkswagen AG. "Tiptronic" is a registered trademark of Dr. Ing h.c. F. Porsche AG. All other trademarks are the property of their respective owners. Some European models shown.