



2014 | allroad®

Audi of America  
Audiusa.com  
Facebook.com/Audi

AoA1414237

Note: A word about this brochure. Audi of America, Inc., believes the specifications in this brochure to be correct at the time of printing. However, specifications, standard equipment, options, fabrics, and colors are subject to change without notice. Some equipment may be unavailable when your vehicle is built. Please ask your dealer for advice concerning current availability of standard and optional equipment, and your dealer will verify that your vehicle will include the equipment you ordered. Vehicles in this brochure are shown with optional equipment. See your dealer for complete details on the Audi New Vehicle Limited Warranty, twelve-year limited warranty against corrosion perforation, and Audi 24/7 Roadside Assistance. (Roadside assistance coverage provided by Road America in the U.S. Certain conditions apply; see your dealer for details.) Tires supplied by various manufacturers. "Audi," all model names, "allroad," "Audi connect," "Audi Sport," "Audi ultra," "FSI," "MMI," "quattro," "Sideguard," "Singleframe" and the Singleframe grille design, "TFSI," "Truth in Engineering," and the four rings logo are registered trademarks of AUDI AG. "Bang & Olufsen" is a registered trademark of Bang & Olufsen. The BLUETOOTH word mark and logos are owned by the Bluetooth SIG, Inc., and any use of such marks by AUDI AG is under license. "BOSE" is a registered trademark of the BOSE Corporation. "Google," "Google Earth" and "Google Voice" are trademarks of Google Inc. "HD Radio" and the HD Radio logo are proprietary trademarks of iBiquity Digital Corporation. "HomeLink" is a registered trademark of Johnson Controls Technology Company. "iPod" is a registered trademark of Apple Inc. "SiriusXM" and all related marks and logos are trademarks of Sirius XM Radio Inc. and its subsidiaries. "TDI" is a registered trademark of Volkswagen AG. "Tiptronic" is a registered trademark of Dr. Ing h.c. F. Porsche AG. "Wi-Fi" is a trademark of the Wi-Fi Alliance. All other trademarks are the property of their respective owners. Some European models shown.

© 2013 Audi of America, Inc. Printed in U.S.A.

# allroad

Audi allroad

Audi  
Truth in Engineering



# THE AUDI STORY

## The story of our collection of obsessions.

Precision. Design. Vision. These are the kind of attributes that we deliver as a company, the kind of passions that go way past getting you from point A to point B. That's because Audi knows that how you get to your destination is only part of the story. And so it is with us as a luxury brand. Our obsessions are our commitments, a collection of inspirations that make up our core truth: That from a foundation of brilliant engineering, we craft more than great vehicles—we tell great stories.

allroad

**There's a reason adventure is so appealing.**

Take a moment to dive into the finer details of Audi. Here you'll find a vehicle that defies conventional thinking every step of the way. From a healthy sense of adventure to a passion for the finer things in life, the Audi allroad® always stays one step ahead of its peers. It's a stunning example of what legendary engineering, generous luxury and exceptional design can accomplish together.



---

### *Enlighten*

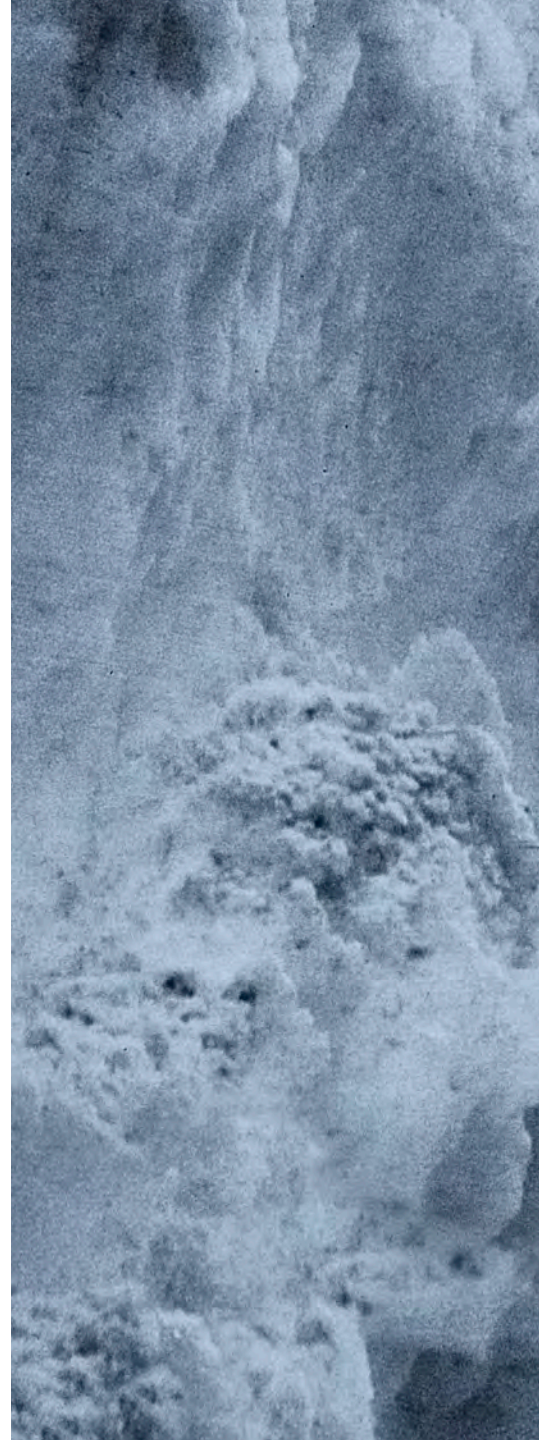
Shedding a new light on illumination just happened to be a design boon.

## **In season, no matter the month.**

There's something to be said for acting on an impulse. When the itch for adventure hits, you don't waste any time—you just pack up your Audi allroad® and go. Of course, with so many recreational opportunities afforded by the allroad, it doesn't take an advanced degree in mathematics to figure out that acting on every impulse could mean a very busy schedule. Luckily for you, you'll have the benefit of an increased ride height, widened track, surefooted Audi quattro® all-wheel drive, and a potent yet efficient 2.0-liter Audi engine at your beck and call.<sup>1</sup> All while the stylish and iconic available LED daytime running light technology provides your allroad with an unmistakable look. And just because you may plan on roughing it when you reach your destination doesn't mean you and your passengers can't indulge in a little opulence on the way. Whatever activity the calendar calls for, you can count on the Audi allroad to be ripe with readiness.<sup>2</sup>

---

<sup>1</sup> EPA estimates not available at time of printing. See [www.fueleconomy.gov](http://www.fueleconomy.gov) for updated information. Your mileage will vary. <sup>2</sup> When driving during cold, rainy, snowy or icy weather conditions, ensure that your vehicle is equipped with appropriate all-season or winter tires. Even with appropriate tires, you must always drive in a manner appropriate for the weather, visibility and road conditions.





2014 AUDI allroad PREMIUM PLUS SHOWN IN MONSOON GRAY METALLIC WITH AVAILABLE EQUIPMENT.

allroad



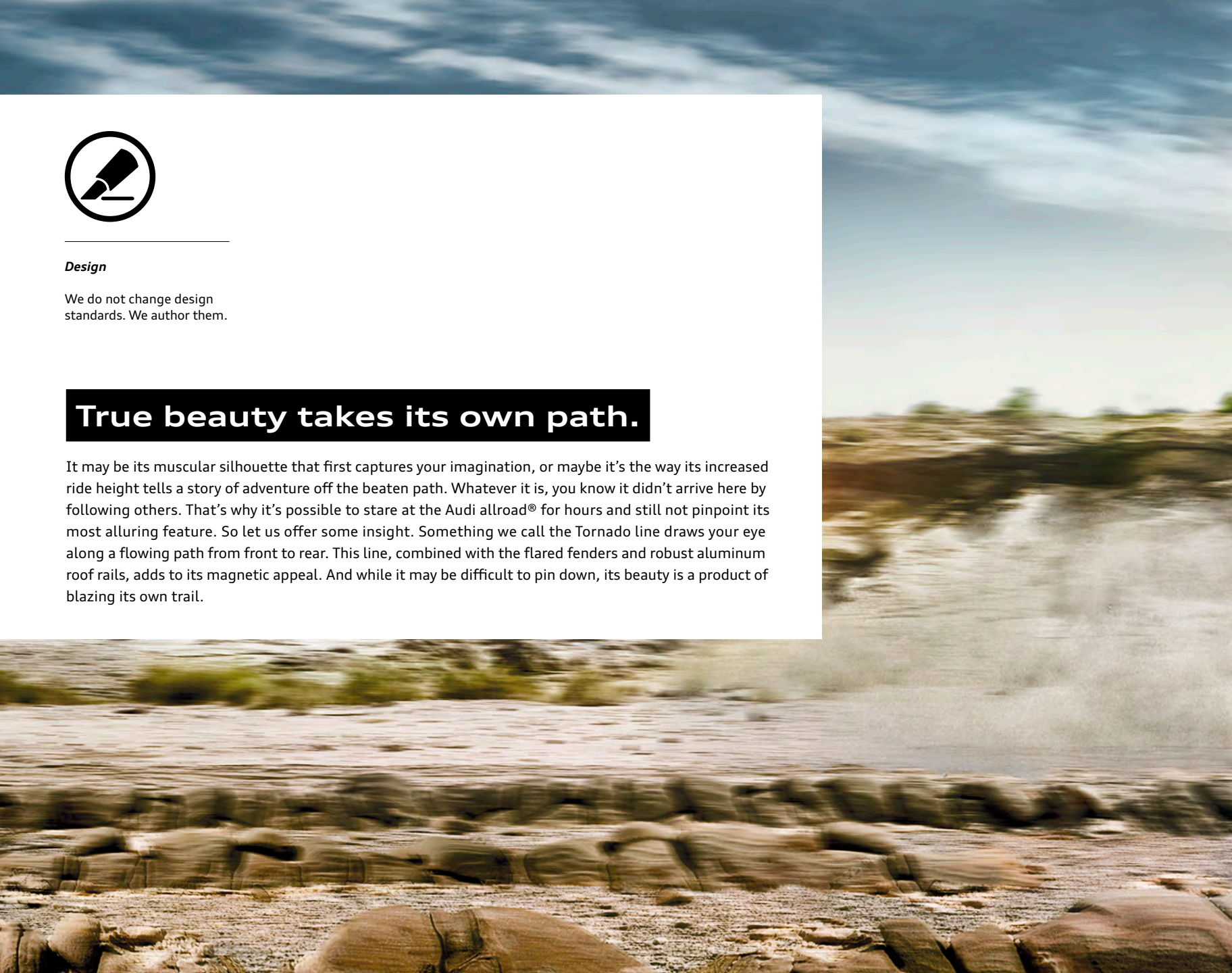
---

### *Design*

We do not change design standards. We author them.

## **True beauty takes its own path.**

It may be its muscular silhouette that first captures your imagination, or maybe it's the way its increased ride height tells a story of adventure off the beaten path. Whatever it is, you know it didn't arrive here by following others. That's why it's possible to stare at the Audi allroad® for hours and still not pinpoint its most alluring feature. So let us offer some insight. Something we call the Tornado line draws your eye along a flowing path from front to rear. This line, combined with the flared fenders and robust aluminum roof rails, adds to its magnetic appeal. And while it may be difficult to pin down, its beauty is a product of blazing its own trail.



---

**Electronic Stability Control with Off-road mode**

Detecting loss of traction almost immediately, ESC helps you stay pointed in your intended direction by automatically adjusting the throttle and brakes. And when activated, the Off-road mode can sense changes in terrain, and varies ESC assistance to help optimize control.







## Blurring the lines between roughing it and pampering.

Traditionally, one would never equate a trek into the wilderness to a relaxing day at the spa. Then came Audi allroad®, where you'll be hard pressed to tell the difference between becoming one with nature and immersing oneself in exquisite luxury. Just imagine settling in on the supple, leather-appointed seating surfaces. From this comforting position, you'll notice how the simple, intuitive controls are all within an easy arm's reach, and the available Fine Grain Ash Natural Brown Wood decorative inlays establish a serene, Zen-like atmosphere.



### ***Craftsmanship***

We've ensured that every stitch represents the detail that we put into every aspect of an Audi.

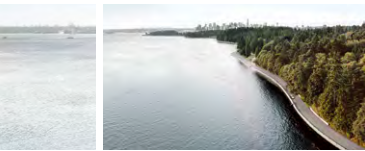


### ***Cavernous interior***

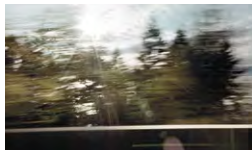
With the convenience of an available power tailgate, up to 50.5 cu ft of cargo capacity and split folding 60/40 rear seatbacks, the question of bringing more luggage or more toys has been answered. Bring more of both.<sup>1</sup>

<sup>1</sup> All cargo should be properly secured before driving the vehicle. See your owner's manual for details.

# Our terrain is not defined by topography.



▼ 56°F to 78°F



The luxurious Audi allroad® was designed with SUV capabilities in mind. That means, luxury aside, those gravel-strewn switchbacks and steep, graded highways are effortless terrain for the Audi quattro® all-wheel drive system. Audi quattro® is designed to help provide maximum grip and optimized power delivery for practically all sorts of road conditions. So while your commute may not be as thrilling as a trip to the summit, you can be confident in the balance and enhanced performance Audi quattro® offers you wherever you go, while giving you no good excuse for taking a snow day.<sup>1</sup>



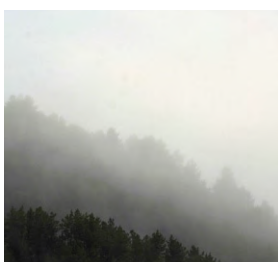
## All-around confidence

Just like life, the road can throw you a curve. So throw one right back with the superior grip and control of quattro®. It helps provide the performance and confidence you would expect from Audi, no matter if you're commuting in the city or crisscrossing the country. This is advanced engineering you can live with.

<sup>1</sup> When driving during cold, rainy, snowy or icy weather conditions, ensure that your vehicle is equipped with appropriate all-season or winter tires. Even with appropriate tires, you must always drive in a manner appropriate for the weather, visibility and road conditions.



▼ HUMIDITY 95%



### All-weather capability

There is a reason quattro® is considered such a friend in foul weather. Under normal driving conditions, the center differential splits torque at a ratio of 40:60 front to rear, but as conditions change and become more challenging, the ratio is optimized to help maximize grip. And with the ability to transfer the majority of available torque mechanically to the wheels with the most grip, the operation is exceptionally smooth, even under extreme conditions.<sup>1</sup>

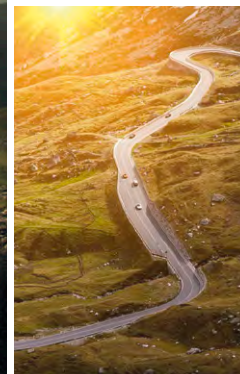


### Torque vectoring

It's a handling feature that seems to respond to your impulses before your steering input. An evolution of cross-axle lock, this system works within quattro®, while utilizing ESC and ABS to help sense traction loss from the inside cornering tire.



▼ WIND 54 mph



A scenic landscape featuring a winding asphalt road that curves through a mountainous area. The road is flanked by rocky terrain and patches of green vegetation. In the background, steep, rocky cliffs rise up, partially covered with greenery. The overall scene conveys a sense of adventure and exploration in a rugged environment.

## **It's not just a catchy name.**

We don't just make beautiful cars. We make them with purpose. And when you consider the ultimate purpose of the Audi allroad®, it should come as no surprise that it's equipped with rugged features that even the most hardened adventurer can appreciate. But not every day will be spent exploring long-forgotten roads. That's why these features are meant to be just as striking in an urban landscape as they are useful on an extended camping trip.

**Roof rails**

With the standard raised aluminum roof rails, the possibilities for multiple activities open up. Whether your trip calls for a ski carrier, a bike carrier or a luggage carrier, there's an attachment for it!<sup>1</sup>

**Underbody protection**

Stainless steel underbody protection not only helps serve as a barrier between your allroad and errant rocks, but adds to its timeless, artistic beauty.

**Specialized tires**

With an increase in tire sidewall height, the allroad has the perfect combination of useful ground clearance and impressive, all-terrain capability.

**Ride height**

Obstacles to your journey can be overcome easily with the increased ride height. With over seven inches of ground clearance, there's more than enough to help get you out there and back.

**Cladding**

Just in case anyone was unsure about this vehicle's capability, the allroad features robust exterior cladding, making its intentions clear. And with an available full-paint finish, its refinement is just as apparent.

<sup>1</sup> All roof-rack system attachment accessories require the base carrier bars. All sold separately.



## We don't anticipate your response so much as provide it.

At Audi, we believe you should be the ultimate master of your road-going domain. That's why we created the available Audi drive select system. It gives you the ability to adjust the vehicle's steering, throttle response and transmission shift characteristics with the utmost of ease. And with four modes to choose from, no matter what kind of road comes into question, Audi drive select will let you answer.

1

### Comfort mode

Perfect for less-than-perfect roads, this setting adds optimized steering and a closer shift pattern to help provide a more relaxed drive.

2

### Dynamic mode

Tighter steering and a more responsive throttle give this setting an aggressive feel and focused performance.

3

### Auto mode

The best of both worlds, dialed to automatically adjust settings for a seamless combination of comfort and responsiveness based on your driving style and road conditions.

4

### Individual mode

Take the turn your way—this mode allows you to adjust the steering, throttle and transmission upshifts to your style.





↑ ↑

### Transmission

From very responsive, quick gear changes to more gradual acceleration, the transmission is at the heart of Audi drive select.

↑ ↑

### Throttle-mapping

Depending on the mode of Audi drive select you choose, the throttle can be precisely responsive or a little less so.

↑ ↑

### Steering

When you turn the steering wheel, you expect the vehicle to react accordingly. Audi drive select helps give you more input on how that will feel.

# Under pressure over efficiency.

There is an old school of thought in the automotive world that bigger is better. More horsepower, greater displacement—these were once the hallmark of the industry. Audi, on the other hand, progressed past this antiquated notion of engine design and adopted a system that refines the driving experience. By utilizing lightweight turbocharged engines, we solved two problems at the same time: greater efficiency and more power than was produced by previous engines.<sup>1</sup> And since lighter vehicles breed better performance, the result is an exhilarating driving experience at every turn.

## 2.0 TFSI® four-cylinder

This 2.0-liter turbocharged DOHC engine produces 220 horsepower and 258 lb-ft of torque, and combines the valvelift system, Audi FSI® direct injection and turbocharging for great power and overall efficiency.<sup>1</sup>

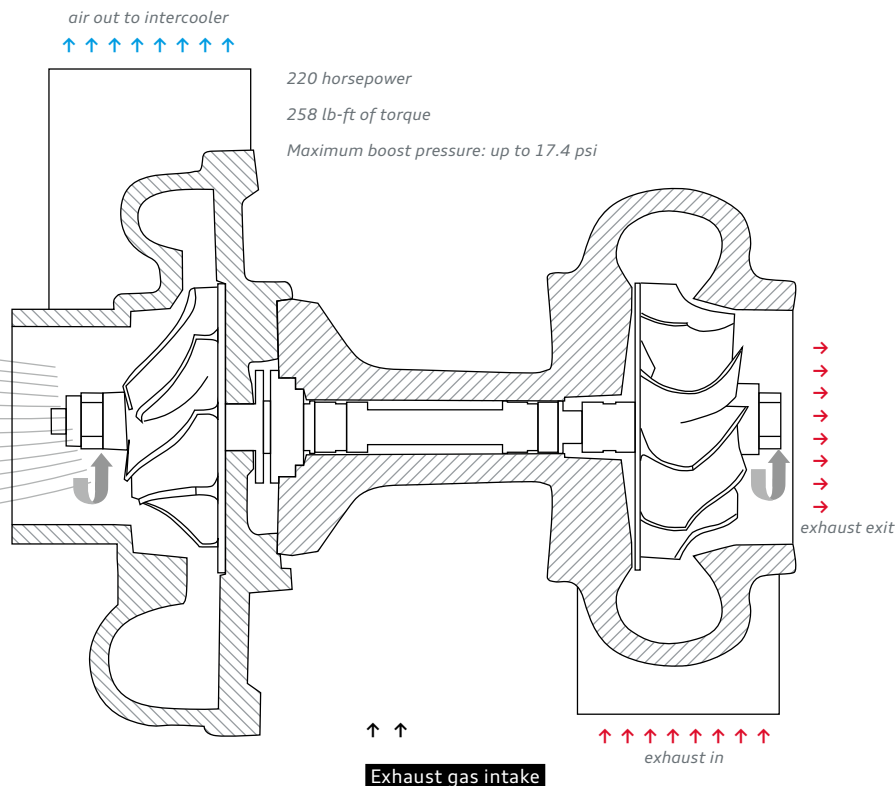


## Performance

The adage “good things come in small packages” has never been more true.

## Induction-technology turbocharger

Compressing the airflow to the engine allows more air into the cylinder and, ultimately, more power from each combustion cycle, significantly improving the engine’s power-to-displacement ratio.

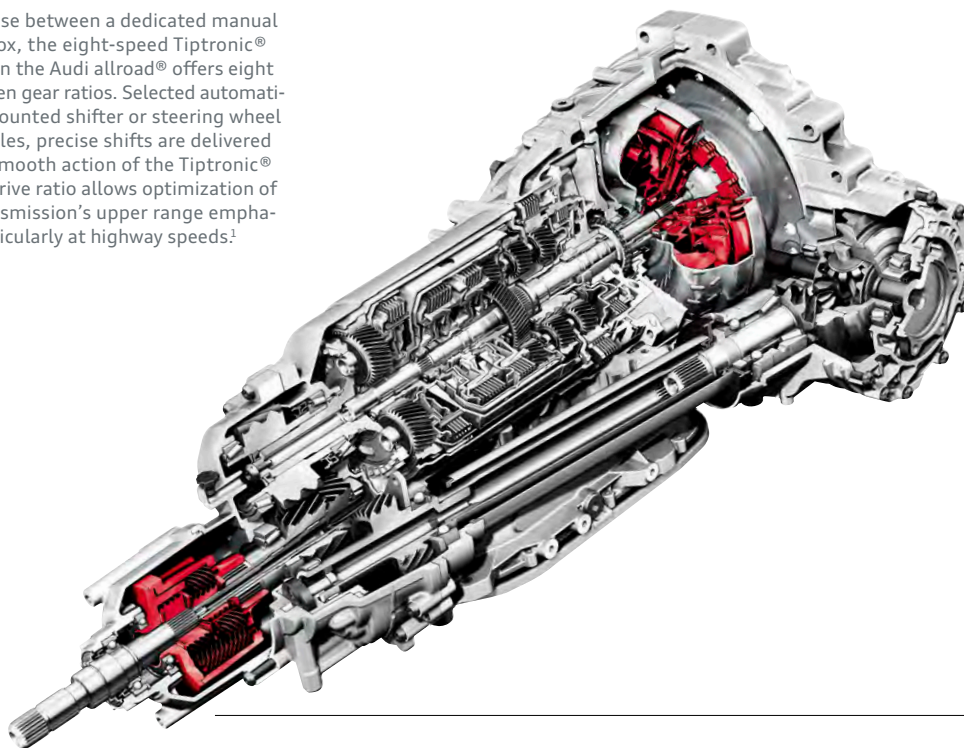


Exhaust from the engine spins the turbine that is connected by a shaft to a compressor that pressurizes air. The compressor forces this pressurized air into the cylinders at boosted pressures up to 17.4 psi, thus producing more power from a smaller displacement engine.

<sup>1</sup> EPA estimates not available at time of printing. See [www.fueleconomy.gov](http://www.fueleconomy.gov) for updated information. Your mileage will vary.

### Eight-speed Tiptronic® automatic transmission

As the perfect compromise between a dedicated manual and an automatic gearbox, the eight-speed Tiptronic® automatic transmission in the Audi allroad® offers eight optimized, carefully chosen gear ratios. Selected automatically or via its console-mounted shifter or steering wheel with available shift paddles, precise shifts are delivered without sacrificing the smooth action of the Tiptronic® automatic. A high final drive ratio allows optimization of lower gears, yet the transmission's upper range emphasizes fuel economy—particularly at highway speeds.<sup>1</sup>



gear	
1ST	4.714:1
2ND	3.143:1
3RD	2.106:1
4TH	1.667:1
5TH	1.285:1
6TH	1.000:1
7TH	0.839:1
8TH	0.667:1
	ratio

## Driving to the tune you choose.

The Audi allroad offers an eight-speed Tiptronic® automatic transmission that precisely transmits the power produced by the 2.0-liter TFSI® engine. With its wide gear ratios for smooth shifting, it doesn't matter which gear you're in, you can count on seamless power delivery. Available steering wheel-mounted shift paddles let you shift up or down with minimal effort, while giving you the control that performance drivers crave. A shift has been made in your favor. What you do with it is your choice.

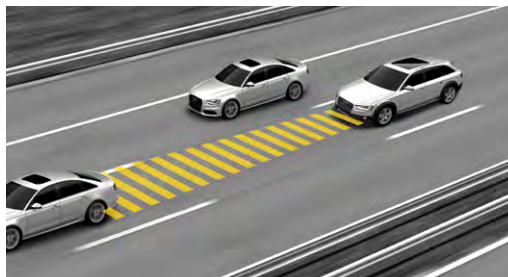
# We shed light on your blind spots.

With a suite of available driver assist options, we strive to constantly up the ante on driver convenience. Available Audi side assist helps inform you of other vehicles in the lanes next to you, while available Audi adaptive cruise control helps monitor the distance between you and the vehicle ahead, and adjusts your speed appropriately to keep you moving smoothly. There are also the simple things, like parking system plus, which adds a rear view camera and rear acoustic parking sensors to help ease you into that spot. It's another testament to the effort that Audi puts into helping ensure that you're not the only one keeping an eye on the road.



## **Driver Assist**

We're solving problems before you even know you have them.



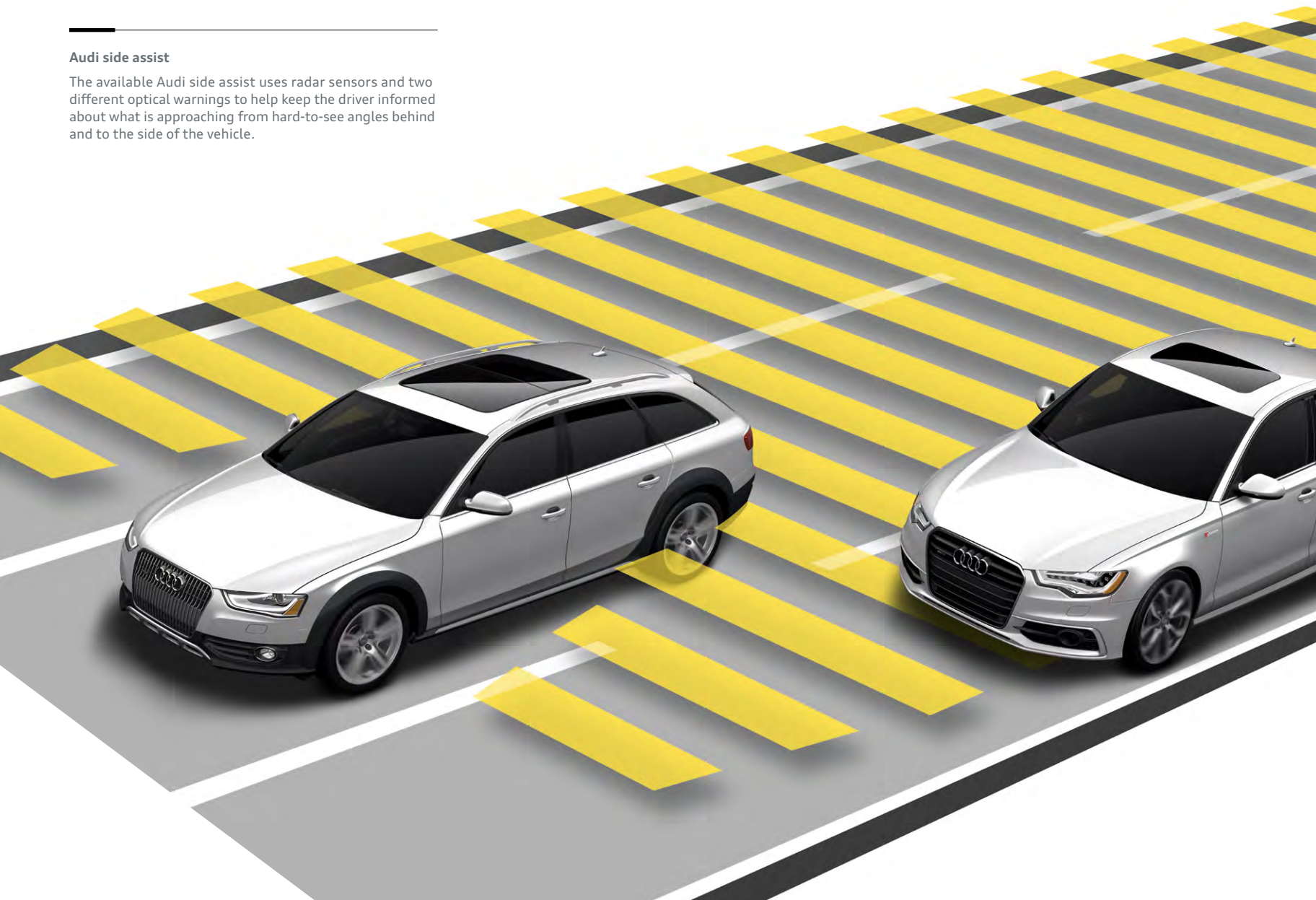
## **Audi adaptive cruise control**

Everyone has their own comfort zone. The available Audi adaptive cruise control helps maintain a driver-selected distance from the vehicle in front by using a special long-range radar sensor. The system constantly measures the space between your vehicle and the vehicle ahead and helps maintain it by automatically adjusting your speed. Once the road ahead is clear, the vehicle effortlessly resumes the previously preset speed, helping to make your drive that much more relaxing.

---

#### Audi side assist

The available Audi side assist uses radar sensors and two different optical warnings to help keep the driver informed about what is approaching from hard-to-see angles behind and to the side of the vehicle.



## Car consciousness.

We believe intelligence is key to a higher form of luxury. You can see this philosophy fully represented in the available Audi MMI® system. Simply put, it's an intuitive system that intimately connects you to almost every facet of the vehicle. It's the nerve center of your vehicle, allowing you to control virtually every interior function of your Audi with a simplified source control button system. From the Audi MMI Navigation plus, to the sound system, to media, MMI helps you access information with a few easy clicks. And even without it, you can pair your compatible phone with the vehicle for added convenience. With this kind of brainpower onboard, you can leave the little stuff to us, and just concentrate on how good it feels to drive.



### MMI System

We've brought the backseat driver front and center.

---

#### SiriusXM® Satellite Radio

Go ahead. Crisscross the country. We assure you, you'll never run out of entertainment options, with over 130 channels of music, talk, sports and news.<sup>1</sup>

---

#### Audi media

The media function opens up a world of options when equipped with the Audi MMI Navigation plus, allowing you to control the Audi music interface, Secure Digital (SD) card slots, hard disk drive (HDD) audio jukebox or DVD, and BLUETOOTH® streaming audio.<sup>1,2,3</sup>

---

#### Audi MMI Navigation plus

Count on the available advanced navigation system to home in on your destination with stunning precision while putting a little more depth in your journey with help from Google Earth™.<sup>1</sup>

---

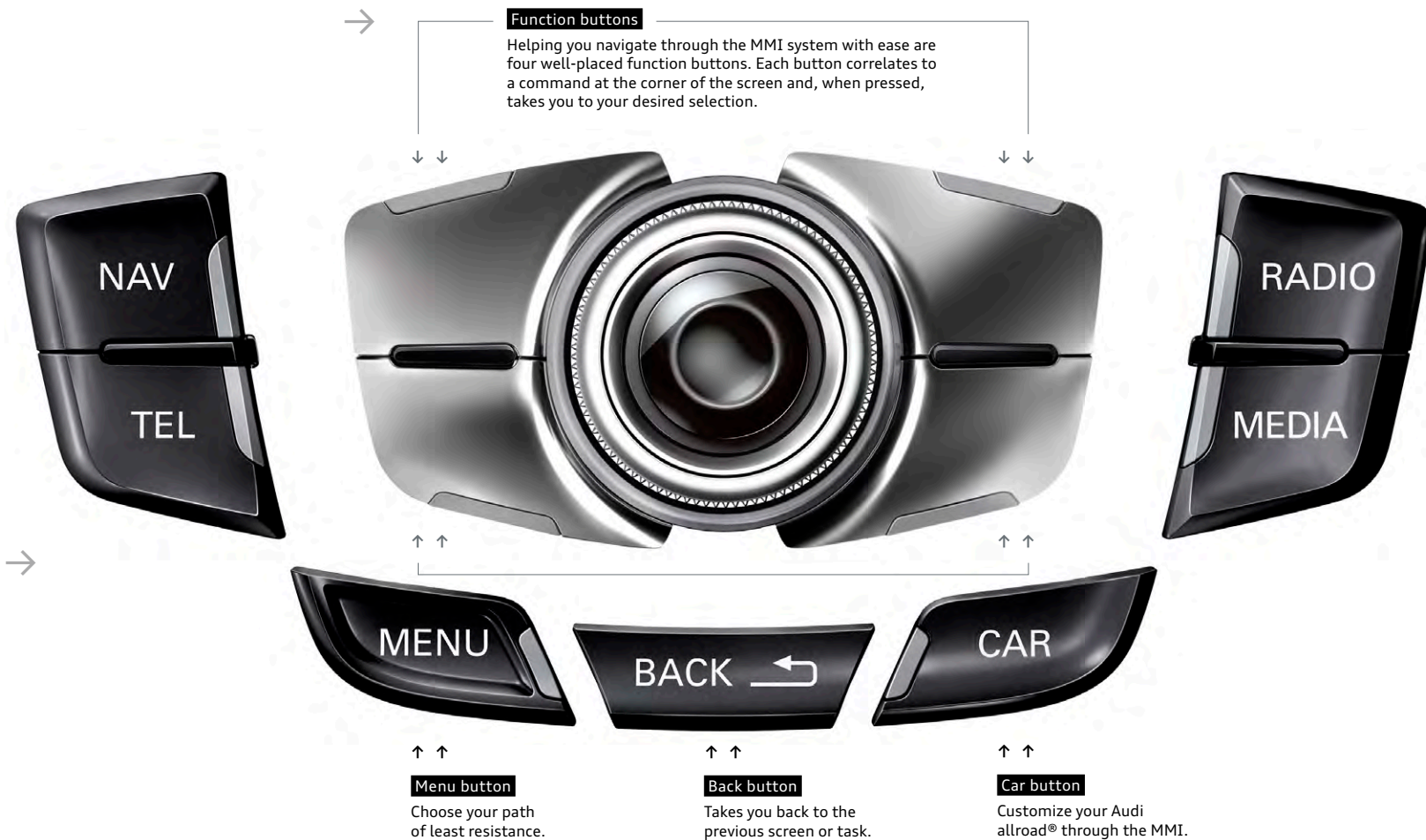
#### BLUETOOTH® wireless technology

Unlock your mobile phone's potential through the MMI system. Simply pair them up and start enjoying near complete control at the touch of a button.<sup>3</sup>



---

1. See Infotainment/Technology section of the Featured Content page for important information regarding Audi MMI® Navigation plus and required SiriusXM® subscriptions. 2. Always pay careful attention to the road, and do not drive while distracted. The features and technologies discussed above are optional, may require an additional subscription with separate terms and conditions, and should be used only when it is safe and appropriate. The Wi-Fi® hotspot feature is intended for passenger use only. 3. Requires compatible phone.



# If nothing else, you know your car is listening to you.

Don't reach—relax. While touchscreens are seemingly everywhere, they don't need to be in your vehicle. With available Audi connect®, you may never have to reach out again.<sup>1</sup> Thanks to Google Voice™ Local Search, Audi connect allows you to search Google™ by simple voice commands. The crisp display is nestled farther up, closer to the windshield, so your eyes don't have to focus and refocus between the screen and the road ahead of you. For those times when you are feeling tactile, we've placed toggle buttons near the gear shifter, where your hand naturally rests while you drive. So while other automobile manufacturers still want you to reach out, we've found a few ways for you to make information a lot more accessible while your hands are on the wheel.



## SiriusXM® Traffic

Get traffic information overlaid onto 3D satellite imagery to visualize a true aerial view of your route, and let the Audi MMI Navigation plus system reconfigure your route to avoid traffic.<sup>2</sup>



## News feeds

Stay on top of the news by having headlines and stories delivered right to your Audi MMI® display.

## POI

### Point-of-interest

The point-of-interest search with voice control means that the digital world is with you on every journey.

myAudi

### myAudi features

Plan travel from your personal computer. Send your desired destinations to your vehicle ahead of time and access your route from your vehicle later.



## Mobile Wi-Fi® hotspot

Provides high-speed connectivity for up to eight passenger devices through an onboard wireless hub.



<sup>1</sup> Always pay careful attention to the road, and do not drive while distracted. The features and technologies discussed above are optional, may require an additional subscription with separate terms and conditions, and should be used only when it is safe and appropriate. The Wi-Fi® hotspot feature is intended for passenger use only. <sup>2</sup> See Infotainment/Technology section of the Featured Content page for important information regarding required SiriusXM® subscriptions.



#### Google Earth™ with 3D satellite imagery

With Google Earth™ integration, you'll enjoy 3D satellite imagery, including Google Maps Street View, displayed right on the Audi MMI display.



#### Weather information

Current local conditions and forecasts for your destination can help you prepare for your trip.



#### Google Voice™ Local Search

Simply tell your Audi what you are in the mood for, then let the cloud-processing power of Google™ speech recognition interpret your request and bring up a list of destinations in the area of your choice.



#### Google Maps Street View

With Google Maps Street View, your vehicle can show you a driver's-eye view of your destination right before you arrive so it's easy to recognize.



#### Parking information

Search for parking in your area of interest, check space availability and set your selection as a destination to navigate directly to the garage entrance.



#### City events

Get information about current events, exciting locations and places of interest at your travel destination, current location or other chosen location instantly.



#### Travel info

Discover local landmarks in your area of interest, set them as your destinations, and let your vehicle lead the way as you explore the world around you.





---

## Sound

Audi is Latin for "listen,"  
so you know we take sound  
very seriously.

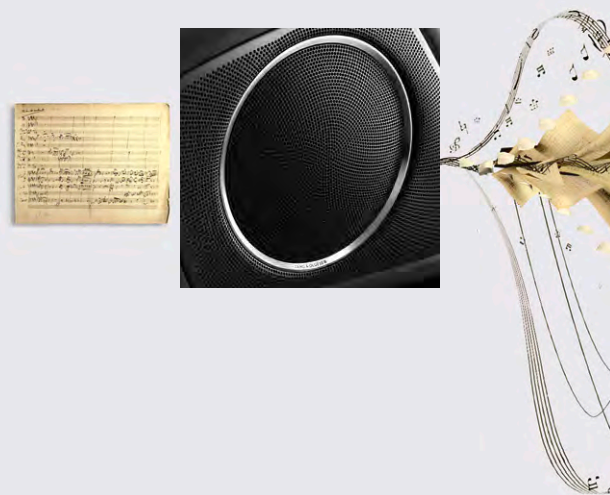
# When even a German lullaby is an ode to sound engineering.

It would be an interesting challenge, a note-perfect Brahms' Lullaby delivered through the tuned speakers of an Audi concert radio system versus the exhilaration of the passing lane. Either way, performance wins. But it goes way beyond the gentle tones of a German composer. Audi sound engineers don't simply make the cabin acoustics sound perfect for your music, they make the drivetrain sing. Or, if not sing, then put it in harmony with every other element of the driving experience. From the sound of a shutting door, to the click of a turning knob, to the full integration of an available Bang & Olufsen® Sound System, there's an orchestra of engineering that fills your cabin with faithfully rendered, thrilling sound. Whatever it is you are looking for, Audi sculpts sounds in a way that matches your mood, even when you need soothing while in traffic.

---

## Bang & Olufsen® Sound System

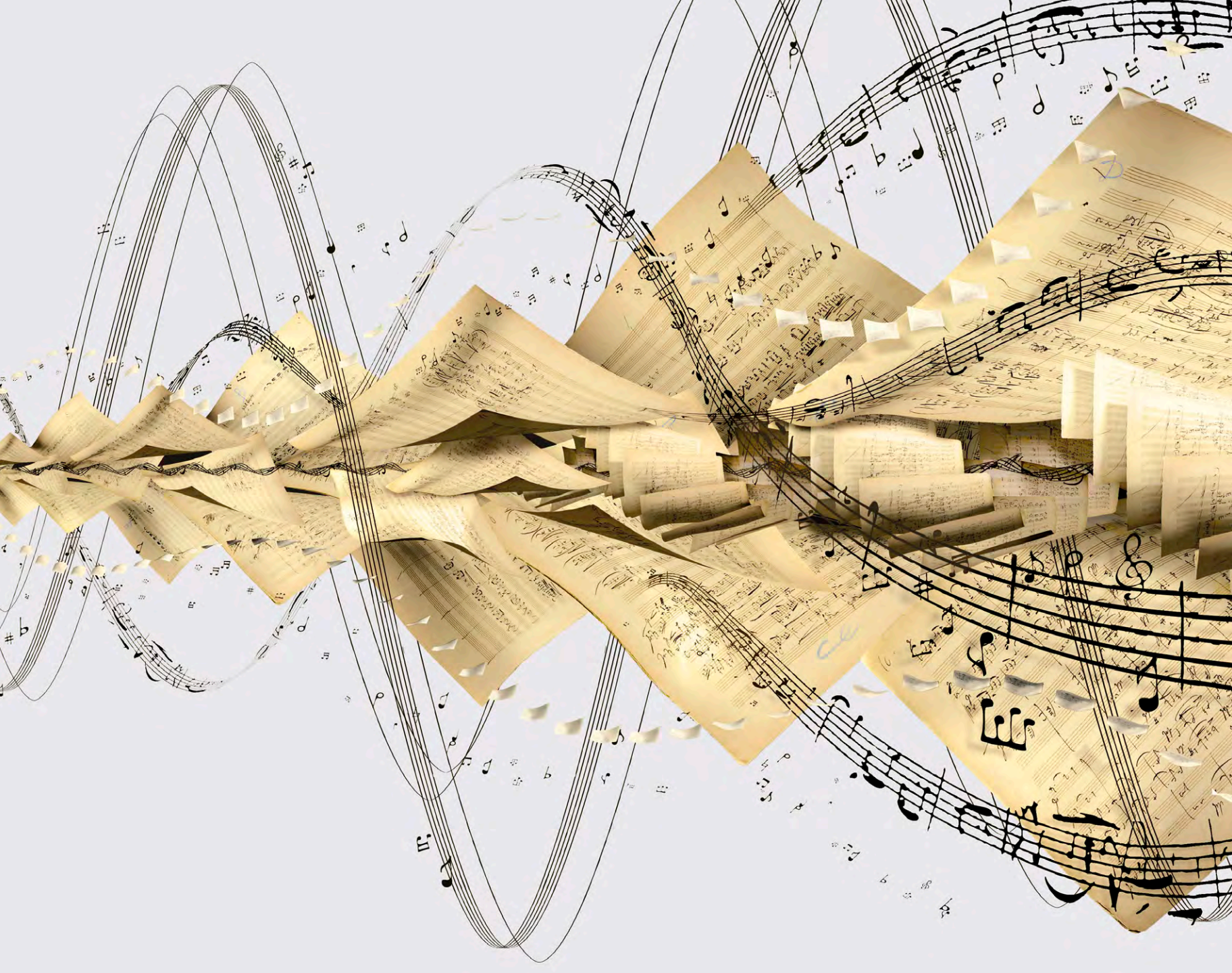
Dedicated to the idea of "honest music reproduction," Bang & Olufsen® is a sound engineer's dream. Through an available 505-watt, 14-speaker system perfectly integrated within your Audi, Bang & Olufsen® is set on transcending the limits of audio technology. By automatically adjusting volume and timbre balance to changing ambient noise levels, and offering richly tuned acoustics, you'll hear the truth about how good life can sound in your Audi.



# 14 speakers

---

Optimized sound flows through strategically placed speakers around the cabin. Hear it, and you'll instantly become engrossed in the tiniest detail and warmth of the sound.







---

#### LED taillight technology

Sleek and stylish, these rear light-emitting diodes are brighter and longer-lasting than conventional bulbs, and also illuminate faster than traditional brake lights, which can help give the driver behind you more time to respond.

## A brilliant indication you are on the right trail.

Distinct and brilliant, available LED taillight technology will be the first indication to other outdoor enthusiasts that they are finally headed in the right direction. And, as if that were not enough to hurt their map-reading egos, the mesmerizing design of the Audi allroad® comes to an irresistible climax around two perfectly sculpted exhaust tips, invoking jealousy to go along with the steady stream of profanity issuing, perhaps, from those who are less directionally inclined. At least you'll give them a lot to think about while they try to keep up with you.

## Exterior Colors | Cladding | Wheels

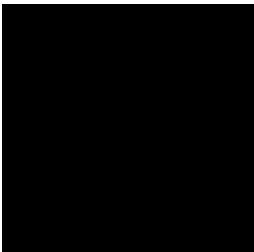
Brilliant Black



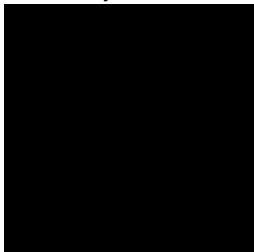
Ibis White



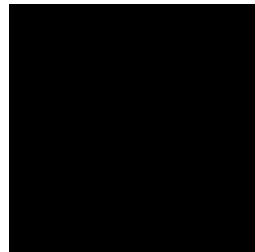
Cuvée Silver metallic



Dakota Gray metallic

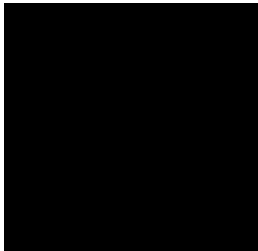


Glacier White metallic



Full-paint finish (optional)

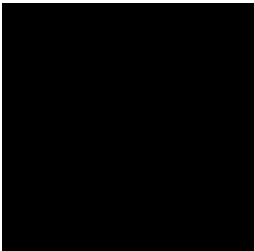
Ice Silver metallic



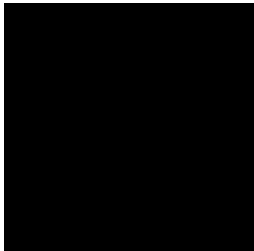
Monsoon Gray metallic



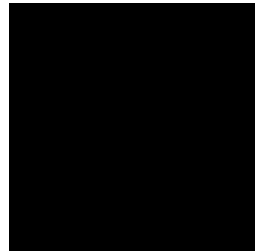
Moonlight Blue metallic



Scuba Blue metallic



Volcano Red metallic



Full-paint finish (optional)

Phantom Black pearl



Full-paint finish (optional)

18" 5-arm-allroad® design  
245/45 all-season tires



allroad Premium, Premium plus and Prestige

19" 5-arm-structure design  
245/40 summer performance tires¹



allroad Premium plus and Prestige (optional)

## Interior Colors | Seat Selections | Decorative Inlays

Standard Seat



Sport Seat

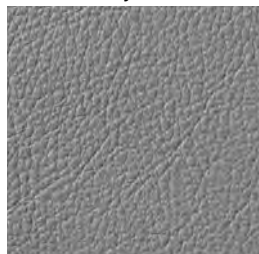


Black leather



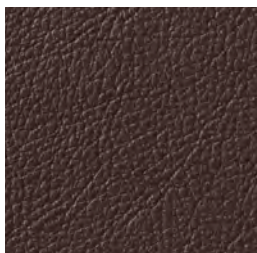
Standard, Sport

Titanium Gray leather



Standard, Sport

Chestnut Brown leather



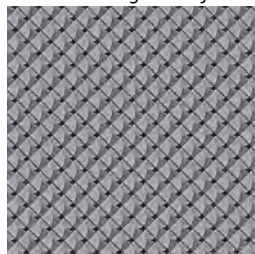
Standard, Sport

Velvet Beige leather

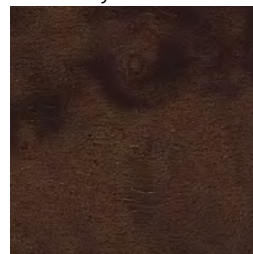


Standard

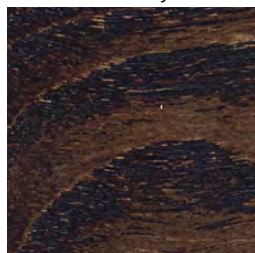
Aluminum Trigon inlay<sup>2</sup>



Dark Brown Walnut Wood inlay<sup>2</sup>



Fine Grain Ash Natural Brown Wood inlay<sup>2</sup>



Layered Oak Wood inlay<sup>2</sup>



<sup>1</sup> Tires are supplied and warranted by their manufacturer. High-performance tires are designed for optimum performance and handling in warm climates. They are not suitable for cold, snowy or icy weather conditions. If you drive under those circumstances, you should equip your vehicle with all-season or winter tires, which offer better traction under those conditions. We suggest you use the recommended winter or all-season tire specified for your car or its equivalent. These high-performance tires also have a lower aspect ratio that aids performance and handling; however, in order to avoid tire, rim or vehicle damage, it is important that the inflation pressure is regularly checked and maintained at optimum levels. Please also remember in making your selection that, while these tires deliver responsive handling, they may ride less comfortably and make more noise than other choices. Finally, these tires may wear more quickly than other choices. <sup>2</sup> Decorative inlay options will vary based on model and interior color combination. See your dealer for details.

# Technical Specifications

## Engineering | Performance

allroad®

Engine type	Four-cylinder
Engine block/Cylinder head	Cast-iron/Aluminum-alloy
Displacement (cc)/Bore and stroke (mm)	1,984/82.5 x 92.8
Horsepower (@ rpm)	220 @ 4,450–6,000
Torque (lb-ft @ rpm)	258 @ 1,500–4,300
Compression ratio	9.6:1
Valvetrain	16-valve DOHC with valvelift system
Induction/Fuel injection	Turbocharged/TFSI®
Acceleration (0–60 mph)	6.4 seconds
Top track speed <sup>1</sup>	130 mph

## Transmission | Drivetrain

Eight-speed Tiptronic® automatic transmission with Audi quattro® all-wheel drive (Gear ratios: 1st: 4.714, 2nd: 3.143, 3rd: 2.106, 4th: 1.667, 5th: 1.285, 6th: 1.000, 7th: 0.839, 8th: 0.667, Reverse: 3.317, Final drive: 3.076)	■
--	---

## Body | Suspension | Chassis

Fully galvanized steel unibody with aluminum hood and multistep anti-corrosion protection	■
Five-link front suspension	■
Trapezoidal-link rear suspension	■
Ventilated front disc/Solid rear disc brakes (in)	12.6/11.8
Electromechanical power steering system	■
Dynamic steering (Prestige)	Available
Steering ratio	15.9:1
Turning diameter, curb-to-curb (ft)	37.7

**Exterior measurements****allroad®**

Wheelbase (in)	110.4
Length (in)	185.9
Height (in)	58.0
Overall width with mirrors (in)	79.0
Overall width without mirrors (in)	72.5
Track front/rear (in)	62.3/62.0
Ground clearance, loaded (in)	7.1
Curb weight	3,891
Drag coefficient (Cw)	.36

**Interior measurements**

Head room with sunroof (in, front/rear)	38.5/38.2
Head room with sunshade (in, front/rear)	36.8/37.4
Leg room (in, front/rear)	41.3/35.2
Shoulder room (in, front/rear)	55.5/54.3
Cargo volume (cu ft, rear seatbacks up/folded)	27.6/50.5
Seating capacity	5

**EPA mileage estimates | Capacities | Emissions**

Tiptronic® automatic transmission (city/highway/combined) <sup>2</sup>	NA
Engine oil (qt)	4.9
Fuel (gal)	16.1
Recommended fuel	Premium
Emissions rating	ULEV II

<sup>1</sup> Top track speed is electronically limited in the U.S. Obey all speed and traffic laws. <sup>2</sup> EPA estimates not available at time of printing. See [www.fueleconomy.gov](http://www.fueleconomy.gov) for updated information. Your mileage will vary.

## Featured Content

### Safety | Security

	Premium	Premium plus	Prestige
Driver and front passenger dual-stage airbags, front thorax side airbags and Sideguard® head curtain airbags <sup>1</sup>	■	■	■
Rear-passenger thorax side airbags <sup>1</sup>	Available	Available	Available
Front-passenger occupant detection for airbags <sup>1</sup>	■	■	■
Safety belt reminder for driver and front passenger	■	■	■
Lower Anchors and Tethers for CHildren (LATCH) in rear seats	■	■	■
Power central locking system with safety unlock feature if airbags deploy	■	■	■
Electronic Stability Control (ESC) with Off-road mode and traction control (ASR)	■	■	■
Anti-lock Brake System (ABS) with Electronic Brake-pressure Distribution (EBD) and brake assist	■	■	■
Tire-pressure monitoring system	■	■	■
Electromechanical parking brake	■	■	■
Anti-theft alarm system with immobilizer	■	■	■

### Exterior

Audi Singleframe® grille	■	■	■
Halogen headlights with daytime running lights	■	—	—
Xenon plus headlights with LED daytime running light technology	Available	■	—
Adaptive xenon plus headlights with LED daytime running light technology	—	—	■
Headlight washing system	■	■	■
Automatic headlights	■	■	■
Front and rear fog lights	■	■	■
LED taillight technology	Available	■	■
Power-adjustable heated exterior side mirrors	■	—	—
Power-adjustable, power-folding, auto-dimming, heated exterior side mirrors with memory	—	■	■
LED turn indicator light technology integrated into the exterior side mirrors	■	■	■
Heated windshield washer nozzles	■	■	■
Aluminum roof rails	■	■	■
Aluminum trim around exterior windows	■	■	■
Power tailgate open/close	—	■	■
Dual exhaust outlets	■	■	■
Audi allroad® exterior appearance with contrasting cladding, stainless steel underbody protection and side sill inserts	■	■	■

■ Standard    — Not applicable

**Exterior** (continued)

	Premium	Premium plus	Prestige
Audi allroad® exterior appearance with full-paint finish (limited exterior colors)	Available	Available	Available

**Interior**

Automatic climate control	■	—	—
Three-zone automatic climate control	—	■	■
Four-spoke multifunction steering wheel	■	■	■
Three-spoke multifunction sport steering wheel with shift paddles	—	Available	Available
Tilt and telescopic manually adjustable steering column	■	■	■
Auto-dimming interior rear view mirror with digital compass	—	■	■
Illuminated locking glove box	■	■	■
Leather-wrapped shift knob	■	■	■
Folding and sliding front center armrest with height adjustment	■	■	■
Eight beverage holders (four cup and four bottle)	■	■	■
Decorative interior inlays (see Decorative Inlays page for more detail)	■	■	■
Aluminum door sill inlays	■	■	■
Front and rear footwell LED lighting technology	■	■	■
Front and rear floor mats	■	■	■
Ambient LED interior lighting technology	■	■	■
Black cloth headliner (with Chestnut Brown leather)	Available	Available	Available
Dual front sun visors with lighted vanity mirrors	■	■	■
Power windows with one-touch up/down operation and pinch protection	■	■	■
Manual rear-side window sunshades	—	—	■
Panoramic sunroof	■	■	■

**Seating**

Leather seating surfaces (see Interior Colors page for more detail)	■	■	■
Eight-way power front seats and four-way power lumbar adjustment for driver	■	■	■
Twelve-way power front sport seats, including four-way power lumbar adjustment	—	Available	Available
Driver seat memory	—	■	■
Heated front seats	Available	■	■
Split folding 60/40 rear seatbacks	■	■	■

<sup>1</sup> Airbags are supplemental restraints only and will not deploy under all crash circumstances. Always use safety belts and seat children only in the rear, using restraint systems appropriate for their size and age.

## Featured Content

### Infotainment | Technology

	Premium	Premium plus	Prestige
Audi MMI® Navigation plus with voice control system <sup>1</sup>	—	Available	■
Audi connect® with six-month trial subscription <sup>2</sup>	—	Available	■
Driver information system	■	■	—
Color driver information system	—	Available	■
Audi concert radio with ten speakers and single CD player with MP3 playback capability	■	■	—
Bang & Olufsen® Sound System with 14 speakers and 505 watts	—	Available	■
HD Radio™ Technology	—	Available	■
SiriusXM® Satellite Radio with 90-day trial subscription <sup>3</sup>	■	■	■
SiriusXM® Traffic with four-year subscription <sup>3</sup>	—	Available	■
SD card slot with 32GB operating capacity (dual slots if equipped with Audi MMI® Navigation plus)	■	■	■
Audi music interface with iPod® integration	■	■	■
BLUETOOTH® streaming audio <sup>4</sup>	—	Available	■
BLUETOOTH® wireless technology preparation for mobile phone <sup>4</sup>	■	■	■
Four 12-volt power outlets	■	■	■
Garage door opener (HomeLink®)	■	■	■
Audi advanced key—keyless start, stop and entry <sup>5</sup>	—	■	■
Cruise control with coast, resume and accelerate features	■	■	■
Audi adaptive cruise control	—	—	Available
Audi side assist	—	Available <sup>6</sup>	■
Audi drive select	—	—	Available
Parking system plus with rear view camera	—	Available	■
Rain/light sensor for automatic windshield wipers and headlights	■	■	■

■ Standard    — Not applicable

1 Audi MMI® Navigation plus depends on signals from the worldwide Global Positioning Satellite network. The vehicle's electrical system and existing wireless and satellite technologies must be available and operating properly for the system to function. The system is designed to provide you with suggested routes in locating addresses, destinations and other points of interest. Changes in street names, construction zones, traffic flow, points of interest and other road system changes are beyond the control of Audi of America, Inc. Complete detailed mapping of lanes, roads, streets, toll roads, highways, etc., is not possible, therefore you may encounter discrepancies between the mapping and your actual location. Please rely on your individual judgment in determining whether or not to follow a suggested Audi MMI® Navigation plus route. For mapping updates please see your Audi dealer or call 1-800-FOR-AUDI for details. 2 See the Audi connect® page for important information about Audi connect®. 3 SiriusXM® Satellite Radio and Traffic subscriptions sold separately or as a package after trial expires. SiriusXM® Traffic service available in select markets. Subscriptions are governed by SiriusXM® Customer Agreement (see www.siriusxm.com) and are continuous until you call SiriusXM® to cancel. SiriusXM® U.S. Satellite Service available only to those 18 and older in the 48 contiguous U.S.A., D.C. and Puerto Rico (with coverage limitations). 4 Requires compatible phone. 5 Some Audi models are equipped with a keyless ignition feature. The details as to how the system works can vary, and Audi owners should consult their owner's literature or an authorized Audi dealer if they have further questions about the operation of this feature. Please note that Audi warns against leaving the vehicle unattended with the engine running, particularly in enclosed spaces. 6 Delayed availability. 7 See dealer for details. 8 All roof-rack system attachments require the base carrier bars. All attachments sold separately. 9 Recreational equipment and sporting equipment not included.

## Accessories

Add a new point of view, a dash of distinction and the ultimate in self-expression with Audi Genuine Accessories. Whether you load the cargo carrier with climbing gear or add a set of sporty new wheels, we've got the accessories that will help enhance every facet of your lifestyle. Designed for seamless compatibility with your Audi, all pieces are backed by your vehicle's 4-year/50,000-mile limited warranty or the accessory's 12-month/12,000-mile limited warranty, whichever extends longer from the accessory purchase date.<sup>7</sup> If you're looking to personalize or protect, Audi offers an intelligent solution.



### Splash guards

Help protect the vehicle's finish with custom-fit splash guards. Made of crack-resistant rubber. Available in sets of two for front or rear.



### Fork-mount bike rack

Made of anodized aluminum, this rack features a quick-clamping device that can be secured with the included lock.<sup>8,9</sup>



### Ski and snowboard rack

Push-button, keyed locks open and close easily. Rubber-cushioned aluminum bars hold securely. Standard attachment (shown) holds two sets of skis or two snowboards. Deluxe attachment holds up to three sets of skis or four snowboards.<sup>8,9</sup>



### Small cargo carrier

Extra carrying capacity (13 cu ft) comes in a smart size: 55" long, 35" wide, 14" high.<sup>8</sup>



### Premium textile floor mats

These skid-resistant, precision-fit mats are made of long-life fabric to help protect the vehicle's interior from the elements. Mats are black with silver piping and available in a set of four.



### All-weather cargo mat

Custom fit for the Audi allroad®. Textured material helps control load shifting. Raised lip helps contain spills and protect cargo-area carpeting from stains.

### Other accessories not shown



### Audi Genuine Sport and Design Accessories



Your Audi vehicle features a bold, aggressive stance and strong, stunning lines. Enhance it by adding Audi Genuine Sport and Design Accessories. All are carefully scrutinized in the design and development process. So while they're striking in appearance, they've also passed rigorous quality assessments, including corrosion testing. If you're looking for a bolder appearance or a finishing touch, there is a solution designed by Audi that makes every mile more enjoyable—and more yours.

### Audi Genuine Alloy Wheels

Strike the perfect balance between breathtaking design and awe-inspiring performance with Audi Genuine Alloy Wheels. Audi experts have meticulously designed these wheels especially for each Audi model. They're engineered to the highest standards and endure rigorous testing to help ensure long-term quality. Experience eye-catching style that is yours and yours alone. Nothing enhances the bold, dynamic look of your Audi vehicle faster.