

2009
BMW 6 Series



650i Coupe
650i Convertible

The Ultimate
Driving Machine®





A reward above all others: the BMW 6 Series.



The most beautiful scenery isn't always snow-covered.



The power to upstage a scenic lookout.

Before you decide what to drive, first discover what drives you.





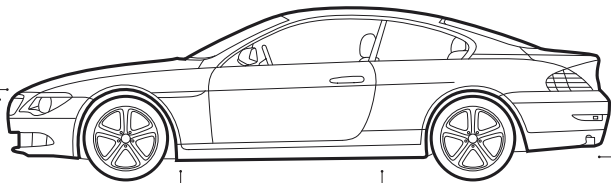


This is how much has gone in.

At BMW, we create dynamic vehicles that thrill you with quick acceleration, predictable handling and unshakable control. We are also busy finding ways to sustain this level of performance while incorporating innovative fuels and technologies to help preserve the environment. This is what we refer to as "EfficientDynamics." This goal has led to the visionary CleanEnergy hydrogen-powered engine, which is currently used in the BMW Hydrogen 7 Sedan. BMW Advanced Diesel with BluePerformance, which offers diesel power with quick acceleration, increased fuel efficiency and reduced emissions, is being introduced to the U.S. in 2009 in select models. In fact, every BMW on the road today comes standard with technology that boosts performance while simultaneously reducing fuel consumption and CO₂ emissions.

Valvetronic

Instead of using a traditional throttle, Valvetronic technology lets the engine breathe more easily by varying the lift height of the valves to regulate air intake. The result: improved cold starts, smoother running, and a significant drop in fuel consumption. Using revolutionary technology such as this, BMW has improved its overall average fuel economy more than any other manufacturer.



Double-VANOS

VANOS is BMW's valve timing system that can "steplessly" vary the points in the combustion cycle when valves open and close. Double-VANOS refers to the fact that it operates on both the intake and exhaust camshafts. Electronically controlled in response to engine speed, load and temperature, VANOS reduces emissions, and enhances low- to medium-speed torque, as well as fuel efficiency.

Efficient transmissions

The 6 Series offers two 6-speed transmissions with Dynamic Driving Control (Sport button): a smooth-shifting manual, and an even more fuel-efficient Sport Automatic with steering wheel-mounted paddle shifters.

Lightweight construction

BMW engineers use durable, lightweight construction throughout the 6 Series. Lighter weight leads to lower fuel consumption and better axle load distribution for more agility – especially in curves. The structure, hood and doors are aluminum; the front side panels are thermoplastic. The trunklid is sheet-molded composite, or SMC. This innovative lightweight material is extra resistant to bending – an important feature in a large-area component. The 6 Series' aluminum outer and inner skins are bonded together with an adhesive that not only saves weight, but gives it longitudinal strength for absorbing crash energy, as well as a resistance to vibrations.

And this is what comes out.

BMW models have low CO₂ emissions today. But that's just for starters. We're carrying on our research in the quest to bring you greater driving pleasure, with fewer emissions and decreased fuel consumption.

Recommended color combinations

Interior colors	Dakota Leather ¹		Pearl Leather ²			
	Cream Beige	Black	Cream Beige	Chateau	Saddle Brown/Black	Black
Upholstery colors						
Exterior colors						
300 Alpine White Non-metallic		●◆	●◆	●◆■	●◆	●◆
405 Imola Red Metallic ³		●◆■	●◆■	●◆■	●◆■	●◆■
668 Jet Black Non-metallic ⁴		●◆	●◆	●◆	●◆	●◆
354 Titanium Silver Metallic		●◆■	●◆■	●◆■	●◆■	●◆■
A14 Mineral Silver Metallic ⁴		●◆■	●◆■	●◆■	●◆■	●◆■
A52 Space Gray Metallic		●◆■	●◆■	●◆■	●◆■	●◆■
440 Stratus Gray Metallic ⁴		●◆■	●◆■	●◆■	●◆■	●◆■
A39 Barbera Red Metallic ⁴		●◆	●◆	●◆		●◆■
A13 Atlantic Blue Metallic ⁴		●◆	●◆	●◆	●◆	●◆
A76 Deep Sea Blue Metallic		●◆	●◆	●◆	●◆	●◆
A35 Monaco Blue Metallic ⁴		●◆	●◆	●◆	●◆	●◆
475 Black Sapphire Metallic		●◆	●◆	●◆	●◆	●◆
416 Carbon Black Metallic ³		●◆	●◆	●◆	●◆	●◆
Interior trim						
Brushed Aluminum ⁵						
Dark Birch Wood ⁶						
Maple Wood ⁶						

¹ Standard. Dakota Leather incorporates Sun-Reflective Technology on the 650i Convertible seats, armrests, headrests and gear shifter.

² Optional. Center console and dashboard are Nappa Leather.

Pearl Leather incorporates Sun-Reflective Technology on the 650i Convertible seats, armrests, headrests and gear shifter.

³ Must be ordered with Sport Package.

⁴ Jet Black Non-metallic, Mineral Silver Metallic, Stratus Gray Metallic, Barbera Red Metallic, Atlantic Blue Metallic, Monaco Blue Metallic: not available with Sport Package.

⁵ Standard.

⁶ No-cost option.

● 650i Coupe and Convertible interior color choices.

◆ 650i Convertible interior color choices offered with 388 Black softtop (standard).

■ 650i Convertible interior color choices offered with 389 Gray softtop (no-cost option).

■ Standard equipment □ Optional equipment



■ **High-pressure headlight cleaning system** helps keep headlights clear of ice, mud, road salt and other coatings, for maximum road illumination and enhanced driving safety.



■ **White LED turn indicators** are an attractive functional detail that add to the BMW 6 Series' sporty style.



■ **Side indicator lights** add to the 6 Series' distinctive individuality.



■ **Halogen free-form foglights**, built into the front air dam, enhance your margin of safety in bad visibility. Ellipsoid free-form technology provides for even light distribution on the road.



■ **Xenon Adaptive Headlights** are incorporated into the redesigned headlight cluster with all-clear lenses. The **Adaptive Headlights** function provides optimum road illumination around corners, thanks to an electromechanical control system that directs the headlights into and through the bend as soon as the vehicle begins cornering. **Xenon headlights** provide brilliant clarity of the road ahead and to the side, both at night and in conditions with poor visibility. The dynamic auto-leveling feature adjusts for varying passenger and cargo loads, helping to keep headlight glare out of the eyes of oncoming drivers. The Corona headlight-rings that circle both the headlights and high beams also act separately as Daytime Running Lights and parking lights.



■ **Adaptive Brake Lights** help following drivers judge your braking intensity. Under light braking, the lower three rows of long-life LEDs in the rear brake-light unit illuminate. During panic braking, Dynamic Brake Control (DBC) signals for the two upper rows of LEDs to illuminate.



■ **Door handles** in body color combine sleek design and comfortable use. □ **Comfort Access system** offers convenient keyless access to your car. Simply carrying the remote key in a pocket or purse allows you to unlock the doors by touching the door handle. You can also turn the engine on or off by pressing the Start/Stop button¹ without inserting the remote key.

¹Foot must be on brake or, with manual transmission, must also depress the clutch in order to start.

■ Standard equipment □ Optional equipment



■ **Heated glass rear window** in the 6 Series Convertible can be raised independently of the softtop to reduce air turbulence and create a quieter cabin when driving at higher speeds. When driving in slower traffic, or when the softtop is raised, the window can also be lowered out of sight. (650i Convertible only)



■ **Tilting glass panel roof** gives the interior an even brighter, more spacious feel. For greater ventilation, it tilts up; an electric sliding interior roofliner keeps the hot sun out. (650i Coupe only)



■ **Automatic fin roof Convertible softtop** is triple-lined and fully automatic. Simply press a button at the front of the center console to raise or lower. The top automatically unlatches from the header and folds down neatly. An interior lining helps reduce wind noise and enhances insulation. The heated glass rear window can be raised or lowered independently of the softtop. Available in Black or Gray. (650i Convertible only)



□ **Star Spoke (Style 218) cast alloy wheels, 19 x 8.5 front, 19 x 9.0 rear; and 245/40 front, 275/35 rear run-flat performance tires.**^{2,3}

² Due to low-profile tires, please note: wheels, tires and suspension parts are more susceptible to road hazard and consequential damages. Performance tires are not recommended for driving in snow and icy road conditions. Run-flat tires do not come equipped with a spare wheel and tire.

³ Style 218 wheel not available with Sport Package.



■ **18 x 8.0 V Spoke (Style 248) cast alloy wheels and 245/45 run-flat⁴ all-season tires.**

⁴ Run-flat tires do not come equipped with a spare wheel and tire.



□ **Star Spoke (Style 249) forged alloy wheels, 19 x 8.5 front, 19 x 9.0 rear; and 245/40 front, 275/32 rear run-flat performance tires.**⁵ (incl. in 6 Series Sport Package)

⁵ Due to low-profile tires, please note: wheels, tires and suspension parts are more susceptible to road hazard and consequential damages. Performance tires are not recommended for driving in snow and icy road conditions. Run-flat tires do not come equipped with a spare wheel and tire.

■ Standard equipment □ Optional equipment



■ **3-spoke leather-wrapped multi-function sport steering wheel** offers controls for audio system, cruise control and (accessory) phone. It also includes Voice Activation to let you keep both hands on the wheel while verbally adjusting various functions.



■ **6-speed manual transmission** delivers a precise, athletic feel that's responsive to your personal driving style. This is due, in part, to the enhanced synchronization of shifts from neutral to each gear. The gearbox adds to the sporty feel, with a shortened shift lever and throw.



□ **6-speed Sport Automatic transmission** provides extremely fast synchronized shifting, whether performed by the automatic shift mode or by means of the Formula 1™-inspired steering wheel-mounted paddle shifters. (no-cost option)



■ **Dynamic Driving Control (Sport button)**, when activated, quickens the vehicle's response and performance for more dynamic steering, acceleration and gear shift changes.



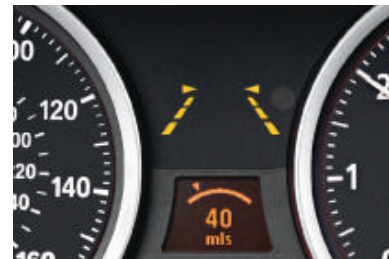
■ **Cruise control** lets you store and maintain a chosen speed above approximately 18.5 mph (activated via the left-hand side steering column switch). Cruise control is deactivated by applying the brakes or moving the lever.



■ **Easy-to-read information display** with precise, dazzle-free analog indicators. Data, such as trip mileage counter, can be checked by using the LCD displays on the instrument panel.



□ **Active Cruise Control (ACC) with Stop & Go¹** allows the driver to preset both a desired speed and distance. When ACC recognizes slower vehicles ahead, it reduces your speed to maintain the preset distance. Stop & Go can bring you to a complete stop if traffic calls for it. When you press the accelerator, ACC resumes your speed according to your presets.



□ **Lane Departure Warning feature²** alerts the driver by discreetly vibrating the steering wheel if the vehicle crosses lane markings without using the directional signal.

² Requires clearly definable lane markings that are not obscured by rain, snow, etc. Lane Departure Warning feature is not a substitute for the driver's own responsibility in maintaining safe control of the vehicle.

¹ Requires optional Sport Automatic transmission. Active Cruise Control is not a substitute for the driver's own responsibility in adjusting speed and otherwise controlling the vehicle. After evaluating road, traffic and visibility conditions, the driver must decide whether and how the system is used.

■ Standard equipment □ Optional equipment



■ **iDrive Controller**, conveniently located on the center console, allows access to a variety of functions that are displayed on the Navigation screen. The turn/press button enables front-seat occupants to access the menu system and fine-tune settings for climate control, the audio system, and communication through BMW Assist.™



□ **Head-up Display** projects important travel information, such as current speed, on the windshield directly in the driver's line of vision. Directional arrows from the Navigation system, Check Control data and optional Active Cruise Control³ functions can also be displayed. (note: Head-up Display not available with green band windshield)

³ Active Cruise Control is not a substitute for the driver's own responsibility in adjusting speed and otherwise controlling the vehicle. After evaluating road, traffic and visibility conditions, the driver must decide whether and how the system is used.



■ **Park Distance Control (PDC)**, front and rear, helps parking and maneuvering in tight spaces. The distance between your vehicle and an obstacle is indicated by an acoustic signal that increases in intensity as your bumper approaches the object, turning into a constant tone when the distance closes to 12 inches. A visual representation is also projected on the iDrive Control display.



■ **Navigation system** covers the U.S. with a single DVD. Accessed via Voice Activation or through the iDrive Controller, the Navigation system uses GPS satellites and DVD technology to create a map of your area on the glare-free dash monitor. The system shows – and tells – the direction to your desired destination; it also provides Real Time Traffic Information on potential traffic problems and solutions.

European screen shown.



□ **Night Vision** is BMW's amazing system that helps you detect pedestrians or animals in the dark – up to 1640 feet ahead.⁴ Using an infrared camera built into the front of the vehicle, you will be able to see potential road hazards displayed on your Navigation system monitor, and avoid them well before they are visible to the naked eye. At higher speeds, a digital zoom provides enlarged images of more distant objects on the screen.

⁴ Under optimal road conditions. Night Vision performance is also limited by rain, fog, humidity and other weather conditions.



■ **BMW anti-theft AM/FM stereo/CD MP3 player audio system** features include Auto-Store and FM diversity antenna system.

■ Standard equipment □ Optional equipment



■ **Six programmable memory keys** offer convenient storage of your most frequently accessed iDrive settings, such as favorite radio stations, Navigation system addresses, phone numbers and more.

■ **Standard CD player** features include title scan, power-assisted CD insert/eject, and MP3 CD playback.



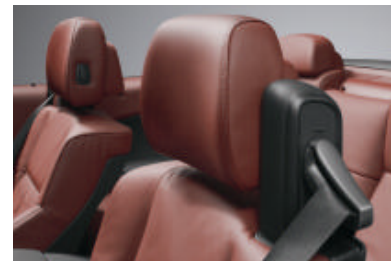
■ **Eight-way power front seats** with four-way power lumbar support and two-way adjustable headrests firmly support the driver and front passenger over long distances. Front-seat bolsters help eliminate "submarining" during sudden stops. Includes Active Head Restraints and driver's-seat memory function for settings. (shown in Cream Beige Pearl Leather upholstery)



■ **Rear cabin** securely holds two passengers. The ergonomic belt system includes center-mounted buckles, two three-point safety belts and head restraints. (650i Coupe shown)



□ **Eight-way power front sport seats** offer four-way power lumbar support and adjustable headrests with Active Head Restraints. Thanks to specially padded, highly contoured side bolsters, sport seats provide optimum lateral support during tight cornering, while remaining exceptionally comfortable when driving over long distances. The seats have power adjustments for seat height, backrest angle, seat bottom angle and forward/backward position; includes manual adjustment for thigh support and headrest. (available only with optional Sport Package; power headrest adjustment in 650i Convertible sport seats)



■ **Integrated safety belt system** provides optimal protection and ergonomic comfort for the driver and front-seat passenger. The seat-integrated design also helps make entering and exiting the rear cabin easier.

■ Standard equipment

□ Optional equipment



■ **Power seat adjustments** allow customized comfort for driver and front passenger. Three-setting memory system automatically adjusts the driver's seat, side-view mirrors and the steering wheel position.



■ **Four-way power lumbar support** for front seats offers comfort and lower back muscle support. Lumbar support can be adjusted four ways: up/down and in/out.



□ **Heated front seats** are a welcome feature for driver and front passenger in cooler weather. With the touch of a button, seat surface and backrest are heated and quickly radiate comfortable warmth in your choice of three settings. (Opt. and included in Cold Weather Package)



■ **Front armrest** offers two height positions and includes a storage bin for small items.

■ **Auxiliary input port** lets you connect an external audio source, such as an iPod® or MP3 player.



■ **Auxiliary storage** is located in the rear of the center console.



■ **Cupholders** – one front, one rear – can be easily inserted into place as needed, or removed and stored in the auxiliary storage bin in the rear center console.



■ **Luggage compartment** (6 Series Coupe shown) is fully lined and easily accessible. Stow two golf bags with ease. Includes four lashing eyelets and side bins for safe storage of smaller items.

■ Standard equipment □ Optional equipment



■ **Lights package** includes vicinity lighting in the outside mirrors; illuminated door sills with glowing BMW letters; glove compartment lighting; and “puddle lights” – door handles that light up the ground as the door is opened.

■ Standard equipment

□ Optional equipment



■ **Automatic-dimming interior and exterior mirrors** respond to the brightness of following headlights to minimize their reflection in the eyes of the driver.



■ **Rain sensor** uses infrared light to measure the amount of rain. When the wipers are in the "intermittent" mode, the rain sensor automatically adjusts the windshield wiping interval as needed. **Automatic headlight control**, included with rain sensor, activates headlights by means of a sensor that responds to darkness.



■ **BMW Universal garage-door opener** takes the place of up to three remote-control devices. It can activate remote functions outside the vehicle, such as garage-door openers or home-lighting systems.



□ **Comfort Access system** offers an even greater degree of convenience: keyless access to your car. Simply carrying the remote key in a pocket allows you to lock/unlock the doors and trunk by touching the door handle or trunk button. You can also turn the engine on or off by pressing the Start/Stop button without inserting the key.

Premium Sound Package offers the pleasure of enjoying the ultimate in sound reproduction. Whether you prefer listening to Bluegrass or Beethoven, you'll enjoy the Logic7 Surround Sound system with Digital Sound Processing, upgraded speakers (including two subwoofers), center dash speaker, and MP3 playback. The Premium Sound Package also includes a six-disc CD changer, as well as an iPod® and USB adaptor with cable connector.



Logic7 premium audio system with 13 upgraded speakers¹ and state-of-the-art audio technology.

¹ 650i Coupe has 13 upgraded speakers; 650i Convertible has 11 upgraded speakers.



Six-disc CD changer is included with the optional Premium Sound Package. Conveniently located in the glovebox, it lets you enjoy over six continuous hours of your favorite music and is capable of MP3 playback.



iPod and USB adaptor with cable connector lets you integrate the iPod, iPhone™ and other MP3 players into the audio system, and control various audio functions through the iDrive Controller or the multi-function buttons on the steering wheel.

Cold Weather Package lets you enjoy winter to the fullest. There's nothing like the feel of a quick-warming seat and a heated steering wheel on a cold morning or stormy night – and the reassurance that your skis and other items are secured inside.



Ski bag allows clean and secure transport of up to four pairs of skis and ski poles. When not extended for use, the ski bag is stored out of sight behind the center armrest.



Heated front seats are a welcome feature for driver and front passenger in cooler weather. With the touch of a button, seat surface and backrest are heated and quickly radiate comfortable warmth in your choice of three settings.



Heated steering wheel makes gloves unnecessary for cold-weather driving. A flick of the switch quickly warms the steering wheel to the perfect temperature.

Performance and efficiency	650i Coupe	650i Convertible
4.8-liter DOHC (4 cam) 360-hp 32-valve V-8 engine with Valvetronic	●	●
Aluminum block and cylinder heads	●	●
Direct ignition system with knock control	●	●
2-stage air intake manifold	●	●
Double-VANOS steplessly variable valve timing	●	●
Electronically controlled engine cooling (map cooling)	●	●
6-speed manual transmission with Dynamic Driving Control (Sport button)	●	●
6-speed Sport Automatic transmission with automatic Sport and Manual shift modes and steering wheel-mounted paddle shifters, Dynamic Driving Control (Sport button), and Adaptive Transmission Control (ATC) ¹	○	○

Handling, ride and braking	650i Coupe	650i Convertible
Vehicle-speed-sensitive variable-assist (Servotronic), variable-ratio rack-and-pinion power steering	●	●
Aluminum front and rear subframes	●	●
Twin-tube gas-pressure shock absorbers	●	●
4-wheel ventilated anti-lock disc brakes (ABS) with Dynamic Brake Control (DBC)	●	●
Sport suspension	●	●
Active Roll Stabilization (ARS)	●	●
Active Steering with variable steering ratio	○	○
Electro-hydraulic brakes	●	●
Dynamic Stability Control (DSC), including Brake Fade Compensation, Start-off Assistant, Brake Drying, and Brake Stand-by features; with Dynamic Traction Control (DTC)	●	●

Exterior and aerodynamics	650i Coupe	650i Convertible
18x8.0 V Spoke (Style 248) cast alloy wheels, with 245/45 run-flat all-season tires ²	●	●
19x8.5 front, 19x9.0 rear Star Spoke (Style 249) forged alloy wheels, with 245/40 front, 275/35 rear run-flat performance tires ³	□	□
19x8.5 front, 19x9.0 rear Star Spoke (Style 218) cast alloy wheels, with 245/40 front, 275/35 rear run-flat performance tires ^{3, 4}	○	○
Rain-sensing windshield wipers with adjustable speed	●	●

- Standard equipment
- Optional equipment
- Sport Package
- ★ Cold Weather Package

¹ No-cost option.

² Run-flat tires do not come with a spare wheel and tire.

³ Due to low-profile tires, please note: wheels, tires and suspension parts are more susceptible to road hazard and consequential damages. Performance tires are not recommended for driving in ice and snow. Run-flat tires do not come with a spare wheel and tire.

⁴ Style 218 wheel not available with Sport Package.

Exterior and aerodynamics (continued)	650i Coupe	650i Convertible
Xenon Adaptive Headlights with dynamic auto-leveling and Corona headlight-rings	●	●
High-beam Assistant	○	○
Headlight washing system	●	●
Halogen free-form foglights	●	●
Park Distance Control	●	●
Aluminum hood and doors	●	●
Contoured hood	□	□
Power-adjustable, heated, body-color, power-folding side-view mirrors with automatic-dimming function	●	●
Thermoplastic front side fenders and sheet molding compound trunk lid	●	●
Choice of standard or metallic paints	●	●
Green band windshield ⁵	●	●
High-gloss shadowline exterior trim	□	□

Instrumentation and controls	650i Coupe	650i Convertible
3-spoke leather-wrapped multi-function sport steering wheel with controls for audio system, cruise control, and Bluetooth [®] wireless communication for hands-free mobile phone ⁶	●	●
Electronic analog speedometer and tachometer and LCD main and trip odometers	●	●
Expanded Check Control vehicle monitor system	●	●
iDrive system with on-board computer and Controller, and 6 programmable memory buttons	●	●
Head-up Display (HUD) ⁷	○	○
Exterior temperature display with alarm for freezing temperatures	●	●
Dynamic Cruise Control	●	●
Active Cruise Control (ACC) with Stop & Go ⁸	○	○
Night Vision	○	○
Navigation system with voice feedback, Voice Command System, and Real Time Traffic Information	●	●
Engine Start/Stop button	●	●
Tire Pressure Monitor	●	●
Vehicle & Key Memory	●	●

- Standard equipment
- Optional equipment
- Sport Package
- ★ Cold Weather Package

⁵ Not available with optional Head-up Display.

⁶ If so equipped.

⁷ Not available with green band windshield.

⁸ Requires optional Sport Automatic transmission.

Interior seating and trim	650i Coupe	650i Convertible
Dakota Leather upholstery, center console and door trim	●	● ⁹
Pearl Leather upholstery and door trim, with center console and dashboard in Black Nappa Leather	○	○ ¹⁰
Brushed Aluminum interior trim	●	●
Dark Birch Wood interior trim ¹¹	○	○
Maple Wood interior trim ¹¹	○	○
8-way power front seats with 2-way adjustable headrests, and Active Head Restraints	●	● ¹²
3-setting memory system for driver's seat, side-view mirrors, and steering wheel position	●	●
4-way power lumbar support for front seats	●	●
8-way power front sport seats with adjustable headrests, manual thigh support, and Active Head Restraints	□	□ ¹²
Adjustable front center armrest	●	●
Color-matching floor mats	●	●

Comfort and convenience	650i Coupe	650i Convertible
Automatic climate control with separate left/right temperature and air distribution controls, with automatic air recirculation	●	●
Micro-filter ventilation system with replaceable active-charcoal filters	●	●
Tilting glass panel roof with electric sliding roofliner	●	
Fully lined power softtop with heated glass rear window that can be raised and lowered independently of softtop		●
Automatic-dimming inside and outside rear-view mirrors	●	●
Power tilt and telescopic steering wheel with automatic tilt-up	●	●
Power windows with key-off and "one-touch" up and down operation both front and rear, anti-trapping feature, opening from remote, and closing from exterior lock	● ¹³	●
Ambient interior lighting	●	●
Dual front sun visors with illuminated mirrors	●	●
Cupholders front and rear	●	●
Heated driver's door lock and rear-window defroster	●	●
3-stage heated front seats	○/★	○/★
Heated steering wheel	★	★
Ski bag	★	★
Fully finished trunk with tool kit and interior trunk release	●	●
Integrated 3-button Universal garage-door opener	●	●
Comfort Access keyless entry with multi-function remote control	○	○

- Standard equipment
- Optional equipment
- Sport Package
- ★ Cold Weather Package
- ◆ Premium Sound Package

⁹ Dakota Leather incorporates Sun-Reflective Technology on the 650i Convertible seats, armrests, headrests and gear shifter.

¹⁰ Pearl Leather incorporates Sun-Reflective Technology on the 650i Convertible seats, armrests, headrests and gear shifter.

¹¹ No-cost option.

¹² Power-adjustable headrests.

¹³ Power rear side-window functions not available in 650i Coupe.

¹⁴ 650i Coupe includes 13 speakers; 650i Convertible includes 11 speakers.

¹⁵ **Bluetooth** allows virtually entire phonebook download capability with BMW-approved phones.

Audio system	650i Coupe	650i Convertible
Anti-theft AM/FM stereo/CD audio system with 8 speakers, Auto-Store, FM diversity antenna system, and MP3 capabilities	●	●
Logic7 sound system with Surround Sound, Digital Sound Processing, 6-disc CD changer, upgraded speakers (including 2 subwoofers), center dash speaker, and MP3 CD playback ¹⁴	◆	◆
Pre-wired for satellite radio installation	●	●
SIRIUS Satellite Radio with one-year subscription	○	○
HD Radio™ with “multicast” FM station reception	○	○
iPod® and USB adaptor (includes cable connector)	◆	◆
Auxiliary audio input for portable music players	●	●

Safety and security	650i Coupe	650i Convertible
Driver’s and passenger’s front airbag supplemental restraint system (SRS) with advanced technology: dual-threshold, dual-stage deployment; and front-passenger seat sensors designed to prevent unnecessary airbag deployment	●	●
BMW’s Advanced Safety System for integrated deployment of passive and active safety features	●	●
Head Protection System	●	●
Active Head Restraints in front seats	●	●
Active Knee Protection	●	●
Front-seat side-impact airbags	●	●
Front safety belts with automatic pretensioners	●	●
LATCH attachment for child-restraint safety installation	●	●
Automatic-locking retractors (ALR) on all passenger-seat safety belts (for installation of child-restraint seats)	●	●
Interlocking door anchoring system to help protect against door intrusion in side impacts	●	●
Rollover Protection System	●	●
Lane Departure Warning feature that alerts the driver of an improper lane-changing maneuver	○	○
BMW Assist™ with Bluetooth® wireless technology for hands-free calling (with Bluetooth enabled mobile phone), phonebook downloading and speech recognition capabilities ¹⁵	●	●
Impact sensor that activates Battery Safety Terminal disconnect of alternator, fuel pump and starter from battery; and turns on hazard lights, interior lights and unlocks doors	●	●
Adaptive Brake Lights	●	●
Coded Driveaway Protection (prevents engine start when your key with constantly changing electronic code is not used)	●	●
Remote keyless entry security alarm system with selective unlocking and double-lock feature (programmed at BMW center), remote trunk opening, interior motion detector, and panic feature	●	●

BMW Services	650i Coupe	650i Convertible
BMW Ultimate Service™	●	●

Sport Package	650i Coupe	650i Convertible
19x8.5 front, 19x9.0 rear Star Spoke (Style 249) forged alloy wheels, with 245/40 front, 275/35 rear run-flat performance tires ¹⁸	<input type="checkbox"/>	<input type="checkbox"/>
8-way power front sport seats with adjustable headrests, manual thigh support, and Active Head Restraints	<input type="checkbox"/>	<input type="checkbox"/> ¹⁹
High-Gloss shadowline exterior trim	<input type="checkbox"/>	<input type="checkbox"/>
Distinctive black chrome dual exhaust tips	<input type="checkbox"/>	<input type="checkbox"/>
Contoured hood	<input type="checkbox"/>	<input type="checkbox"/>

Cold Weather Package		
3-stage heated front seats	★	★
Heated steering wheel	★	★
Ski bag	★	★

Premium Sound Package		
Logic7 sound system with Surround Sound, Digital Sound Processing, 6-disc CD changer, upgraded speakers (including 2 subwoofers), center dash speaker, and MP3 CD playback ²⁰	◆	◆
iPod® and USB adaptor (includes cable connector)	◆	◆

- Sport Package
- ★ Cold Weather Package
- ◆ Premium Sound Package

¹⁸ Due to low-profile tires, please note: wheels, tires and suspension parts are more susceptible to road hazard and consequential damages. Performance tires are not recommended for driving in snow and icy road conditions. Run-flat tires do not come equipped with a spare wheel and tire.

¹⁹ Power-adjustable headrests.

²⁰ 650i Coupe includes 13 speakers; 650i Convertible includes 11 speakers.

Dimensions		650i Coupe	650i Convertible
Length/width/height	inches	190.2/73.0/54.1	190.2/73.0/54.1
Wheelbase	inches	109.4	109.4

Weight			
Unladen	lb	3814	4277
Weight distribution, front/rear	%	52.6/47.4	49.0/51.0

Engine			
Liter/type		4.8/V-8	4.8/V-8
Bore/stroke	inches	3.66/3.48	3.66/3.48
Nominal output @ rpm	hp	360 @ 6300	360 @ 6300
Max torque @ rpm	lb-ft	360 @ 3400	360 @ 3400
Compression ratio	:1	10.5	10.5
Fuel grade		unleaded premium	unleaded premium

Performance			
Acceleration 0 – 60 mph ¹	sec	5.3 (5.4)	5.6 (5.7)
Top speed ²	mph	150	150
Aerodynamic drag coefficient	C _d	0.30	0.31

Fuel consumption³			
City/highway, manual	mpg	15/22	14/21
City/highway, automatic	mpg	15/23	15/23
Fuel tank capacity, approximate	gal	18.5	18.5

¹ BMW AG test results. Actual acceleration results may vary, depending on specification of vehicle; road and environmental conditions; testing procedures and driving style. These results should be used for comparison only and verification should not be attempted on public roads. BMW urges you to obey all posted speed laws and always wear safety belts.

² Top speed limited electronically.

³ EPA-estimated figures are for comparison purposes only. Your actual mileage will vary, depending on speed, driving habits, trip length and driving conditions; actual mileage will most likely be lower.

Figures in () apply to models with 6-speed Sport Automatic transmission.

Wheels		650i Coupe	650i Convertible
Standard tire dimensions and type ¹		245/45 run-flat all-season	245/45 run-flat all-season
Standard wheel dimensions	inches	18 x 8.0	18 x 8.0
Material		cast alloy	cast alloy
Sport Package tire dimensions and type ²		245/40 front, 275/35 rear run-flat performance	245/40 front, 275/35 rear run-flat performance
Sport Package wheel dimensions	inches	19 x 8.5 front, 19 x 9.0 rear	19 x 8.5 front, 19 x 9.0 rear
Material		forged alloy	forged alloy
Optional tire dimensions and type ² (not available with Sport Package)		245/40 front, 275/35 rear run-flat performance	245/40 front, 275/35 rear run-flat performance
Optional wheel dimensions	inches	19 x 8.5 front, 19 x 9.0 rear	19 x 8.5 front, 19 x 9.0 rear
Material		cast alloy	cast alloy

¹ Run-flat tires do not come equipped with a spare wheel and tire.

² Due to low-profile tires, please note: wheels, tires and suspension parts are more susceptible to road hazard and consequential damages. Performance tires are not recommended for driving in snow and icy road conditions. Run-flat tires do not come equipped with a spare wheel and tire.

BMW and the environment.

BMW is a strong proponent of the environment and social responsibility. It is important to manage the earth's resources responsibly, and not jeopardize the needs of future generations. That is why BMW makes vehicles that minimize adverse environmental impact, from production (pollution prevention and waste minimization at the plant) through owner use (low emissions) to eventual disposal (easy drainability of all fluid-related components and easy neutralization of all pyrotechnic devices).

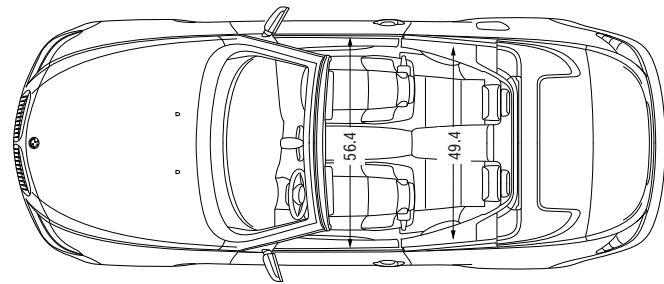
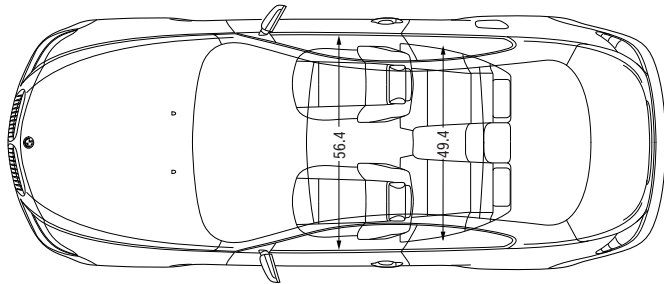
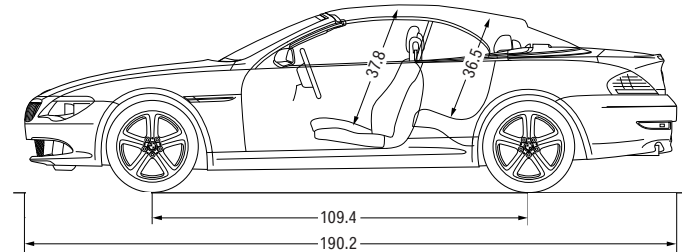
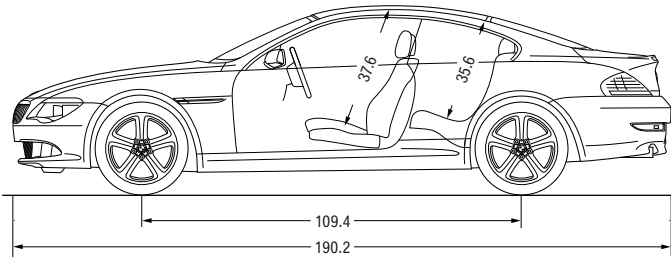
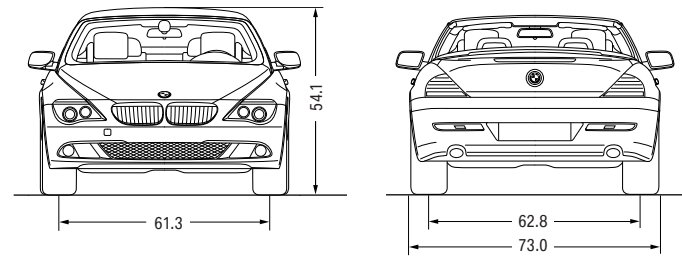
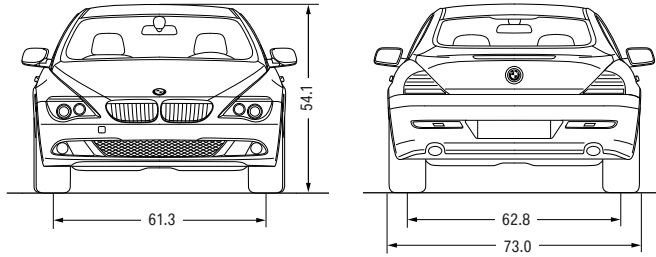
This effort has been recognized worldwide and, as a result, we are pleased to have received numerous environmental honors. In the U.S., for example, the Environmental Protection Agency accepted BMW's Spartanburg, SC production and manufacturing facility as a charter member of the agency's National Environmental Performance Track. Internationally, BMW AG – the parent company of both BMW of North America and BMW Manufacturing Co., Spartanburg, SC – was the first automotive company to be represented on the Dow Jones Sustainability Group Index, and has remained on the Index ever since. At BMW, we strive for high performance in everything we do.

U.S. Importer: BMW of North America, LLC, Woodcliff Lake, NJ 07677. All illustrations and specifications contained in this brochure are based on the latest product information available at the time of printing. BMW reserves the right to make changes at any time, without notice, in colors, materials, equipment, specifications and models. BMW may, subject to legal requirements, determine the Model Year designation of its vehicles. The Model Year designation on any particular model may be longer or shorter than 12 months. Some vehicles pictured may contain non-U.S. equipment. Some models may be shown with optional equipment. While BMW NA makes diligent efforts to provide accurate information in this brochure, there is no guarantee or warranty of accuracy. Furthermore, we do not

assume any liability for the accuracy or completeness of information presented. This brochure shall not be used or relied upon as a substitute for information that is available from your BMW center. Further information can be obtained from your authorized BMW center or bmwusa.com. ©2008 BMW of North America, LLC. Not to be reproduced wholly or in part without written permission of BMW NA. The BMW name, model names and logo are registered trademarks. The **Bluetooth** word mark and logos are owned by the **Bluetooth SIG**, Inc. and any use of such marks by BMW is under license. iPhone and iPod are trademarks or registered trademarks of Apple Inc. Other trademarks and trade names are the property of their respective owners.

BMW 650i Coupe

BMW 650i Convertible



All dimensions are shown in inches and apply to models with standard wheels.
NOTE: Measurements do not include vehicle width from mirror to mirror.

More about BMW

bmwusa.com
1-800-334-4BMW



**The Ultimate
Driving Machine®**

