

BUICK.COM

2010 BUICK LUCERNE



TAKE A LOOK AT ME NOW.

IT'S BEEN WELL THOUGHT OUT. EVERY LINE PRECISE. EVERY TECHNOLOGY CALIBRATED.  
CERTAINLY ALL PERFORMANCE OPTIMIZED. THE **2010 BUICK LUCERNE** COMES TOGETHER  
NICELY TO FORM A MORE INTELLIGENT LUXURY SEDAN.

---

02 DESIGN  
06 TECHNOLOGY  
08 INTERIOR  
12 PERFORMANCE  
14 STANDARD FEATURES & OPTIONS  
16 ACCESSORIES


---

Some photos shown in this catalog may contain optional equipment.





**GOES WITH THE FLOW.** ITS ANGLED WINDSHIELD AND ROOFLINE GRAB PLENTY OF ATTENTION—EXCEPT FROM THE WIND. DESIGNED TO SLICE THROUGH THE AIR, LUCERNE CUTS QUITE THE PROFILE. A SURE-FOOTED WHEELBASE DELIVERS A CONFIDENT ROAD STANCE AND THE NEWLY REIMAGINED FRONT FASCIA KEEPS ITS NOSE TO THE ROAD.



**BY DESIGN.** FRESHLY SCULPTED LINES ENCIRCLE LUCERNE WHILE HIGHLIGHTING CHROME PORTHOLES AND A WATERFALL GRILLE—SIGNATURES OF THE BUICK DESIGN PHILOSOPHY. WHILE WRAPAROUND HEADLAMPS WITH HIGH-INTENSITY TUNGSTEN-HALOGEN BULBS NOT ONLY ILLUMINATE THE ROAD, BUT ITS DESIGN AS WELL.



**AND BRAINS TOO.** LUCERNE IS SMART ENOUGH TO OFFER THE FOLLOWING AVAILABLE TECHNOLOGIES: TO HELP GUIDE YOU, THE VOICE- AND TOUCH-SCREEN-ACTIVATED DVD NAVIGATION SYSTEM OFFERS NEARLY 7 MILLION MILES OF NORTH AMERICAN ROADS. AND TO NAVIGATE THOSE ROADS, XM NAVTRAFFIC<sup>1</sup> INCORPORATES REAL-TIME ROAD CONDITIONS RIGHT INTO YOUR NAV SCREEN, DIRECTING YOU AROUND TROUBLE SPOTS AND TOWARD THE MOST EFFICIENT ROUTE. FOR YOUR ENTERTAINMENT PLEASURE, THE NINE-SPEAKER, 280-WATT HARMAN KARDON<sup>®</sup> SOUND SYSTEM IS TUNED AND EQUALIZED SPECIFICALLY FOR LUCERNE'S CABIN. ADDITIONALLY, XM RADIO<sup>2</sup> COMES STANDARD WITH THREE TRIAL MONTHS OF ALMOST EVERY GENRE OF COMMERCIAL-FREE MUSIC, PLUS SPORTS, NEWS, TALK AND ENTERTAINMENT. AND TO HELP KEEP YOUR EYES ON THE ROAD, AND YOUR HANDS ON THE WHEEL, BLUETOOTH<sup>®3</sup> CONNECTIVITY OFFERS THE EASE OF HANDS-FREE CALLING.



FOR THE ULTIMATE IN CONVENIENCE, LUCERNE CAN BE STARTED FROM UP TO 195 FEET AWAY WITH ITS REMOTE START SYSTEM. AND TO BE SAFE, SIDE BLIND ZONE ALERT<sup>4</sup> WARNS YOU WHEN ANOTHER VEHICLE IS IN YOUR OUTSIDE MIRROR BLIND SPOT.<sup>4</sup> THIS COLLISION AVOIDANCE TECHNOLOGY ISN'T FOUND ON ANY LEXUS SEDAN. LUCERNE ALSO OFFERS LANE DEPARTURE WARNING, WHICH READS ROAD MARKINGS ABOVE 35 MPH, SENDING VISUAL AND AUDIBLE CUES WHEN YOU STRAY FROM YOUR LANE. YOU'RE ALSO A PUSH OF THE BLUE BUTTON AWAY FROM ONSTAR<sup>5</sup>—STANDARD FOR ONE YEAR. VOICE-GUIDED TURN-BY-TURN NAVIGATION<sup>6</sup>; THE SIMPLEST AND SMARTEST IN-VEHICLE NAV SYSTEM, LEADS THE WAY. CHOOSE THE PREVIOUSLY MENTIONED NAV SYSTEM, AND DESTINATION DOWNLOAD<sup>7</sup> SENDS DIRECTIONS TO YOUR SCREEN WITHOUT PULLING OVER AND ENTERING ANYTHING. OR USE ENAV<sup>8</sup> TO FIND YOUR DESTINATION AT MAPQUEST<sup>®</sup> AND HAVE IT SENT TO LUCERNE'S ONSTAR SYSTEM.



<sup>1</sup>Required XM Radio and XM NavTraffic monthly subscriptions sold separately by XM after trial period. XM NavTraffic only available in select markets. Certain real-time traffic data provided by NAVTEQ, ©2009 NAVTEQ. For more information, visit [xmradio.com/navtraffic](http://xmradio.com/navtraffic). <sup>2</sup>XM Radio requires a subscription, sold separately by XM after the first 90 days. XM Radio U.S. service only available in the 48 contiguous United States and the District of Columbia. For more information, visit [gm.xmradio.com](http://gm.xmradio.com). <sup>3</sup>Go to [gm.com/bluetooth](http://gm.com/bluetooth) to find out which Bluetooth phones are compatible with the vehicle. <sup>4</sup>Before making a lane change, always check

the Side Blind Zone Alert display, check the side and inside rearview mirrors, look over your shoulder for vehicles and hazards and start the turn signal. <sup>5</sup>Call 1-888-4ONSTAR (466-7827) or visit [onstar.com](http://onstar.com) for details and system limitations. <sup>6</sup>Turn-by-Turn not available in certain areas. Visit [onstar.com](http://onstar.com) for coverage map. <sup>7</sup>Requires compatible navigation system. <sup>8</sup>Requires Directions & Connections plan. Not available in certain areas. Visit [onstar.com](http://onstar.com) for coverage map.

OPEN INVITATION.

INTERIOR

Lucerne is designed with an eye toward highly crafted materials. There are restyled jewel-like gauges with LED backlighting and an optional leather-wrapped and heated steering wheel accented with walnut burl finish. You can also choose available leather-appointed seating with French stitching and perforated suede insets. To please the ears, Buick's pioneered QuietTuning process reduces, blocks and absorbs noise and vibration. Laminated windshield and front door glass, laminated steel applied behind the instrument panel, acoustic insulation and sound-deadening material throughout help keep outside noises outside.



**HAVE A SEAT.** Get up close and personal with seats that look good and feel even better. Comfort is standard while the following available amenities only enhance that feeling. Perforated suede insets accent matte Nuance leather-appointed cushions and French seams—this upscale seating is standard on the Super model and is now included on CXL Special Edition as well. Adjustable eight-way heated power seats offer separate power lumbar controls for the driver and front passenger.

Check the option box and the seats up front may also be heated and cooled, while memory presets position the driver's seat and outside mirrors as you left them, keeping Lucerne personalized no matter who else was behind the wheel. Add available dual-zone automatic climate controls to provide the driver and front passenger their choice of temperature settings. To give you plenty of space for these comforts, Lucerne's 115.6-inch wheelbase creates a roomy cabin for all. Rear-seat passengers enjoy 41.4 inches of leg room and plenty of knee clearance. And for peace of mind, Lucerne has earned an impressive five-star frontal crash test rating.<sup>1</sup>



<sup>1</sup>Five-star rating is for the driver and front passenger seating positions in the frontal crash test. Government star ratings are part of the National Highway Traffic Safety Administration's (NHTSA's) New Car Assessment Program (safercar.gov).



**COMMAND PERFORMANCE.** Motion is generated three ways. Lucerne's 3.9L V-6 powers two of them. One runs solely on gasoline and the other is capable of using either gasoline or E85,<sup>1</sup> a blend of 85 percent ethanol and 15 percent gasoline. When using gasoline, both versions boast better fuel economy than a Volvo S80.<sup>2</sup> The third option is the all-aluminum 32-valve Northstar 4.6L V-8 powering the Lucerne Super. With 292 hp and 288 lb-ft of torque, quick acceleration with plenty of reserve power proves its legendary status. They're all mated to smooth-shifting, electronically tuned automatic transmissions.

Dynamic handling comes from a four-wheel independent suspension with full-range traction control. Magnetic Ride Control, exclusive to the Super model, speed-reads the road up to 1,000 times per second and adjusts damper settings—technology not offered on Infiniti G37 or Lexus ES 350. Lucerne also features StabiliTrak, which has the uncanny ability to sense the driver's steering input to help the driver keep on track in varying road conditions.



Because it's a Buick, Lucerne is backed by a comprehensive 4-year/50,000-mile Bumper-to-Bumper Limited Warranty.<sup>3</sup> Add to that a transferable 5-year/100,000-mile Powertrain Limited Warranty<sup>3</sup> plus 24/7 Roadside Assistance and Courtesy Transportation. Now you've got the best coverage in America.

And to make sure your Lucerne always lives up to its performance promise, Goodwrench service—found exclusively at your Buick dealer—is there. With all the technology in Lucerne, Goodwrench technicians have the expertise to care for all of it.

<sup>1</sup>Visit [gm.com/e85](http://gm.com/e85) to see if there is an E85 station near you. <sup>2</sup>GM-estimated 17 city/26 hwy mpg CX and CXL. Official EPA estimates not yet available. 2009 Volvo S80 FWD EPA-estimated 16 city/25 hwy mpg. <sup>3</sup>Whichever comes first. See dealer for details.



	CX	CXL	SUPER
<b>POWER AND PERFORMANCE</b>			
<b>ENGINES</b> 3.9L Variable Valve Timing (VVT) V-6 SFI FlexFuel	S	S	—
3.9L VVT V-6 SFI	A	A	—
Northstar 4.6L DOHC 32-valve V-8	—	—	S
<b>TRANSMISSION</b> 4-speed automatic, enhanced electronic	S	S	S
<b>SUSPENSION</b> 4-wheel independent, Ride and Handling	S	S	—
4-wheel independent, Super	—	—	S
Automatic level control, electronic, rear	S	S	S
Magnetic ride control	—	—	S
<b>STEERING</b> Power rack-and-pinion	S	S	—
Power magnetic rack-and-pinion with variable assist	—	—	S
<b>BRAKES</b> 4-wheel anti-lock, 4-wheel disc with dynamic rear proportioning	S	S	S
<b>STABILITRAK</b> Vehicle stability enhancement system with Brake Assist	A	A <sup>1</sup>	S
<b>TRACTION CONTROL</b> Full range, powertrain and brake modulated	S	S	S
<b>EXHAUST</b> Stainless steel	S	S	—
Dual stainless steel with chrome tips	—	—	S
<b>BATTERY</b> Rundown protection	S	S	S
<b>ENGINE BLOCK HEATER</b>	A	A	A
<b>TIRES</b> All-season, blackwall	S	S	S
<b>COMFORT AND CONVENIENCE</b>			
<b>SEAT TRIM</b> Cloth	S	—	—
Leather-appointed	—	S	—
Perforated leather-appointed	—	A	—
Leather-appointed with perforated suede insets	—	A <sup>1</sup>	S
<b>SEATING</b> 5-passenger seating	S	S	S
6-passenger seating	A	A	—
Heated driver and front passenger seating	—	S	S
Heated and cooled driver and front passenger seating	—	A	A
Driver and front passenger 6-way power seat adjusters	S	—	—
Driver and front passenger 8-way power seat adjusters with 4-way power lumbar control	—	S	S
<b>MEMORY SETTINGS</b> Includes presets for 2 drivers, 8-way power driver/front-passenger seat with easy-exit driver seat and outside mirrors	—	S	S
<b>ARMRESTS</b> Rear center with dual cupholders and trunk pass-through	S	S	S
<b>CONSOLE</b> Front center with storage bin, storage tray and dual cupholders. (Not available with 6-passenger seating.)	S	S	S
<b>ASSIST HANDLES</b> Front passenger and 2 rear outboard with coat hooks	S	S	S
<b>INSTRUMENTATION</b> With coolant temperature, tachometer, fuel gauge, speedometer, Driver Information Center and compass	S	S	S
<b>BLUETOOTH</b> <sup>2</sup> For phone, personal cell-phone connectivity to vehicle audio system	A <sup>1</sup>	S	S
<b>STEERING WHEEL</b> Leather-wrapped with mounted audio and cruise controls	S	—	—
Heated, leather-wrapped with mounted audio and cruise controls	—	S	—

	CX	CXL	SUPER
Heated wood with walnut burl finish and mounted audio and cruise controls	—	A <sup>1</sup>	S
Tilt-adjustable steering column	S	S	—
Power tilt and telescopic steering column	—	—	S
<b>REMOTE VEHICLE STARTER SYSTEM</b>	A <sup>1</sup>	A <sup>1</sup>	S
<b>REAR PARKING ASSIST</b> Ultrasonic with audible warning	A <sup>1</sup>	A <sup>1</sup>	S
<b>CRUISE CONTROL</b>	S	S	S
<b>LIGHTING</b> Interior glove box, trunk, delayed entry/exit with theater dimming, rear courtesy and front map lights	S	S	S
Interior rear reading, switchable	S	S	S
<b>MIRRORS</b> Inside rearview, auto-dimming	S	S	—
Inside rearview, auto-dimming with compass display	—	—	S
<b>VISORS</b> Driver and front passenger illuminated vanity mirrors, sliding	S	S	S
<b>CLIMATE CONTROL</b> Air conditioning, single-zone manual with air-filtration system	S	—	—
Air conditioning, dual-zone automatic with air-filtration system for driver and front passenger and rear-seat heating and cooling outlets	A <sup>1</sup>	S	S
Defogger, rear-window electric	S	S	S
<b>WINDOWS</b> Power with driver express-down	S	S	S
<b>POWER OUTLETS</b> Auxiliary, 12-volt (2)	S	S	S
<b>SUNROOF</b> Power, tilt-sliding	—	A	A
<b>FLOOR MATS</b> Color-keyed, carpeted, front and rear, stain-resistant	S	S	S
<b>TRUNK RELEASE</b> Power	S	S	S
<b>RETAINED ACCESSORY POWER</b> Power windows and audio system remain operational after ignition is switched off for 10 minutes or until a door is opened	S	S	S
<b>QUIETTUNING</b> Buick-pioneered process to reduce, block and absorb noise and vibration to create a quiet interior cabin	S	S	S
<b>ENTERTAINMENT SYSTEMS</b>			
(US8) AM/FM/XM <sup>3</sup> stereo with CD player and MP3 playback, includes seek-and-scan, digital clock, auto-tone control, speed-compensated volume, TheftLock and auxiliary audio jack	S	S	—
(US9) AM/FM/XM <sup>3</sup> stereo with 6-disc in-dash CD changer and MP3 playback, includes seek-and-scan, digital clock, auto-tone control, speed-compensated volume, TheftLock and auxiliary audio jack	—	A	S
(U3U) AM/FM/XM <sup>3</sup> stereo with CD player and MP3 playback, includes DVD-based touch-screen navigation, seek-and-scan, digital clock, auto-tone control, speed-compensated volume, TheftLock and auxiliary audio jack	—	A	A
<b>AUDIO</b> (UQA) Harman Kardon® 9-speaker, 280-watt audio system	—	A	S
<b>XM RADIO</b> <sup>3</sup> XM Radio includes 3 trial months of service. For more information, visit gm.xmradio.com.	S	S	S
<b>XM NAVTRAFFIC</b> <sup>4</sup> Satellite-delivered traffic information service that enhances a GPS navigation system with the ability to show real-time traffic data. With XM NavTraffic, you will see traffic-impacting incidents such as construction, road closures, accidents and disabled vehicles. In select markets, you will also see average traffic speed and estimated travel time along the chosen route. Requires available (U3U) audio system with navigation.	—	A	A

	CX	CXL	SUPER
<b>SAFETY AND SECURITY</b>			
<b>SAFETY BELTS</b> 3-point, driver and front passenger, height-adjustable, includes pretensioners	S	S	S
3-point, rear, all seating positions	S	S	S
<b>LATCH</b> (Lower Anchors and Top tethers for CHildren) system for child safety seats	S	S	S
<b>AIR BAGS</b> <sup>5</sup> Dual-stage frontal driver and dual-depth right-front passenger with Passenger Sensing System, driver and right-front passenger side-impact	S	S	S
Head curtain, side-impact for front and rear outboard seating positions	S	S	S
<b>POWER DOOR LOCKS</b> Programmable with lockout protection	S	S	S
Child security door locks, rear	S	S	S
<b>ONSTAR</b> <sup>6</sup> One year of Directions & Connections plan. Includes Turn-by-Turn Navigation, <sup>7</sup> Automatic Crash Notification, Automatic Notification of Air Bag Deployment, Stolen Vehicle Assistance, <sup>8</sup> a link to all Emergency Services, Roadside Assistance (roadside service provided by Cross Country), Remote Door Unlock, <sup>9</sup> OnStar Vehicle Diagnostics, <sup>9</sup> Hands-Free Calling, <sup>10</sup> AccidentAssist, Remote Horn and Lights, Information and Convenience Services and Driving Directions.	S	S	S
<b>THEFT-DETERRENT SYSTEMS</b> Content theft alarm	A <sup>1</sup>	A <sup>1</sup>	S
Vehicle, PASS-Key III	S	S	S
<b>UNIVERSAL HOME REMOTE</b> 3-channel programmable with garage door opener	A <sup>1</sup>	S	S
<b>LANE DEPARTURE WARNING</b> Requires Side Blind Zone Alert and outside heated power-adjustable mirrors	—	A <sup>1</sup>	A <sup>1</sup>
<b>SIDE BLIND ZONE ALERT</b> Radar-equipped sensing system. Requires Lane Departure Warning and outside heated power-adjustable mirrors.	—	A <sup>1</sup>	A <sup>1</sup>
<b>TIRE PRESSURE MONITOR SYSTEM</b> Does not apply to spare tire	S	S	S
<b>TIRE SEALANT AND INFLATOR KIT</b>	S	—	—
<b>WHEEL</b> Spare, compact	A <sup>1</sup>	S	S

	CX	CXL	SUPER
<b>STYLING AND FUNCTIONALITY</b>			
<b>LIGHTS</b> Halogen composite with Twilight Sentinel and flash-to-pass feature	S	S	S
Fog lamps, front halogen with projector beam	S	S	S
Daytime running lamps, switchable	S	S	S
Front cornering lamps, front turn signal	S	S	S
<b>GLASS</b> Solar-Ray light-tinted	S	S	S
<b>OUTSIDE MIRRORS</b> Heated, power-adjustable and driver-side, auto-dimming, body-color, manual-folding	S	S	S
Heated, power-adjustable and driver-side auto-dimming, body-color, manual-folding with integrated turn signal indicators. Requires Lane Departure Warning and Side Blind Zone Alert.	—	A <sup>1</sup>	A <sup>1</sup>
<b>MOLDINGS</b> Bodyside body-color with bright inserts	S	S	S
Body-color rocker panel	S	S	S
<b>FASCIA</b> Front body-color with integrated chrome grille	S	S	S

	CX	CXL	SUPER
<b>PACKAGES</b>			
<b>COMFORT AND CONVENIENCE PACKAGE</b> Includes dual-zone automatic climate control, Universal Home Remote, trunk cargo convenience net, Bluetooth technology for phone <sup>2</sup> and compact spare wheel and tire	A	S	S
<b>DRIVER CONFIDENCE PACKAGE</b> Includes content theft alarm system, remote vehicle starter system, Ultrasonic Rear Parking Assist and StabiliTrak stability control system with Brake Assist	A	A	S

	CX	CXL	SUPER
<b>LUCERNE CXL SPECIAL EDITION</b> Includes chrome deck lid molding, unique 17" chrome-clad wheels, integrated exhaust with chrome tip, custom perforated leather-appointed seats with suede insets, Special Edition badge and premium floor mats. Available on 5-passenger seating only.	—	A	—

	CX	CXL	SUPER
<b>WHEELS</b>			
<b>N75</b> 17" Bright Silver finish, aluminum	S	S	—
<b>PA2</b> 17" chrome-plated aluminum	—	A	—
<b>QZ6</b> 17" chrome-clad aluminum (CXL Special Edition only)	—	S	—
<b>P49</b> 18" premium Bright Silver finish, aluminum	—	—	S
<b>P31</b> 18" chrome-plated aluminum	—	—	A



	CX	CXL	SUPER
<b>SPECIFICATIONS AND CAPACITIES</b>			
<b>ENGINE TYPE</b>	3.9L VVT V-6 SFI	3.9L VVT V-6 SFI	Northstar 4.6L DOHC V-8
	3.9L VVT V-6 SFI FlexFuel	3.9L VVT V-6 SFI FlexFuel	
<b>HORSEPOWER (HP@RPM)</b>	227@5700	227@5700	292@6300
3.9L V-6 SFI (gas only)	219@5700	219@5700	
<b>TORQUE (LB-FT@RPM)</b>	237@3200	237@3200	288@4500
3.9L V-6 SFI (gas only)	234@3200	234@3200	
<b>GM-ESTIMATED MPG</b> <sup>11</sup>	17 city/26 hwy	17 city/26 hwy	15 city/22 hwy
<b>CARGO CAPACITY</b> <sup>12</sup>	17 cu.ft.	17 cu.ft.	17 cu.ft.
<b>SEATING CAPACITY, FRONT/REAR</b>	2/3 (optional) 3/3	2/3 (optional) 3/3	2/3
<b>FUEL TANK (APPROX.)</b>	18 gallons	18 gallons	18 gallons
<b>BASE CURB WEIGHT</b>	3,735	3,806	3,998

	CX	CXL	SUPER
<b>DIMENSIONS (INCHES)</b>			
<b>WHEELBASE</b>	115.6	<b>HEAD ROOM, FRONT</b>	39.5
<b>OVERALL LENGTH</b>	203.2	<b>HEAD ROOM, REAR</b>	37.6
<b>BODY WIDTH</b>	73.8	<b>SHOULDER ROOM, FRONT</b>	58.0
<b>OVERALL HEIGHT</b>	58.0	<b>SHOULDER ROOM, REAR</b>	57.0
<b>FRONT TRACK WIDTH (CX, CXL)</b>	63.0	<b>HIP ROOM, FRONT</b>	56.1
<b>FRONT TRACK WIDTH (SUPER)</b>	62.6	<b>HIP ROOM, REAR</b>	57.0
<b>REAR TRACK WIDTH (CX, CXL)</b>	62.5	<b>LEG ROOM, FRONT</b>	42.5
<b>REAR TRACK WIDTH (SUPER)</b>	62.1	<b>LEG ROOM, REAR</b>	41.4

<sup>1</sup>Requires available option package. <sup>2</sup>Go to gm.com/bluetooth to find out which Bluetooth phones are compatible with the vehicle. <sup>3</sup>XM Radio requires a subscription, sold separately by XM after the first 90 days. XM Radio U.S. service only available in the contiguous United States and the District of Columbia. For more information, visit gm.xmradio.com. <sup>4</sup>Required XM Radio and XM NavTraffic monthly subscriptions sold separately by XM after trial period. XM NavTraffic only available in select markets. Certain real-time traffic data provided by NAVTEQ, ©2009 NAVTEQ. For more information, visit xmradio.com/navtraffic. <sup>5</sup>Always use safety belts and the correct restraint for your child's age and size. Even in vehicles equipped with the Passenger Sensing System, children are safer when properly secured in a rear seat in the appropriate infant, child or booster seat. Never place a rear-facing infant restraint in the front seat of any vehicle equipped with a passenger air bag. See the Owner's Manual and child safety

seat instructions for more safety information. <sup>6</sup>OnStar services require vehicle electrical system (including battery), wireless service and GPS satellite signals to be available and operating for features to function properly. OnStar acts as a link to existing emergency service providers. Subscription service agreement required. Call 1-888-4ONSTAR (466-7827) or visit onstar.com for OnStar's Terms and Conditions, Privacy Policy, details and system limitations. <sup>7</sup>Turn-by-Turn not available in certain areas. Visit onstar.com for coverage map. <sup>8</sup>Ability to locate stolen vehicles and Remote Door Unlock success vary with conditions. <sup>9</sup>Diagnostic capabilities vary by model. Visit onstar.com for details. <sup>10</sup>OnStar Hands-Free Calling requires a Hands-Free Calling-enabled vehicle, existing OnStar service contract and prepaid minutes. Not available in certain areas. Calls may be made to the U.S. and Canada only. <sup>11</sup>Based on GM testing. Official EPA estimates not yet available. <sup>12</sup>Cargo and load capacity limited by weight and distribution.



**GET PERSONAL.** MAKE LUCERNE YOUR VERY OWN WITH AVAILABLE ACCESSORIES CREATED SPECIFICALLY TO MATCH ITS DISTINCTIVE STYLE, AS WELL AS YOURS. ALL OF THESE ITEMS HAVE BEEN TESTED TO MEET BUICK'S ORIGINAL EQUIPMENT STANDARDS FOR PERFORMANCE AND APPEARANCE. THEIR COST CAN BE APPLIED TO YOUR PURCHASE, INSTALLED BY YOUR BUICK DEALER AND COVERED UNDER GM'S NEW-VEHICLE LIMITED WARRANTY.<sup>1</sup> JUST ASK YOUR DEALER.



**ADVANCED TWO-WAY REMOTE START/REMOTE MONITORING SYSTEM** THIS INTELLIGENT KEY FOB NOT ONLY STARTS LUCERNE, BUT ITS DIGITAL READOUTS ALSO LET YOU CHECK THE AIR PRESSURE IN EACH TIRE OR HOW MUCH FUEL IS IN THE TANK. | **DUAL-PLAYER HEADREST DVD SYSTEM** INDIVIDUAL 7-INCH DIAGONAL LCD FLAT-SCREEN MONITORS AND A TOP-LOADING DVD/CD/MP3 PLAYER ARE INTEGRATED INTO THE BACK OF THE FRONT HEADRESTS. A PAIR OF WIRELESS HEADPHONES AND A REMOTE CONTROL ARE INCLUDED. | **REAR SPOILER** AERODYNAMICALLY DESIGNED, THIS CUSTOM-MOLDED SPOILER COMPLEMENTS THE STYLING OF YOUR LUCERNE. AVAILABLE IN SELECT COLORS OR CAN BE PAINTED TO MATCH. | **18-INCH CHROME WHEELS**<sup>2</sup> ADD A NEW LEVEL OF DIMENSION TO YOUR LUCERNE WITH TWO STUNNING 18-INCH CHOICES. THEY ARE CAST FROM HIGH-STRENGTH ALUMINUM, THEN GIVEN A LONG-LASTING, BRILLIANT CHROME FINISH.

<sup>1</sup>GM Accessories permanently installed at the time of new-vehicle delivery are covered under the New-Vehicle Limited Warranty. If installed after delivery, coverage (parts and labor) is for the balance of the new-vehicle warranty or a minimum of 12 months/12,000 miles, whichever comes first. GM Accessories not requiring installation or purchased over the counter carry a 12-month limited warranty (parts only). Does not apply to licensed products. <sup>2</sup>Use only GM-approved tire and wheel combinations. Unapproved combinations may change the vehicle's performance characteristics. For important tire and wheel information, go to gmaccessorieszone.com or see your dealer for details. <sup>3</sup>Additional charge, premium paint. <sup>4</sup>Not available on CXL Special Edition or Super models. <sup>5</sup>Late availability.

**IMPORTANT WORDS ABOUT THIS CATALOG.** Since some information may have been updated since the time of printing (July 2009), please check with your Buick dealer for complete details. Buick reserves the right to lengthen or shorten the model year for any product for any reason, or to start and end model years at different times.

**NEW-VEHICLE LIMITED WARRANTY.** This warranty is for GM vehicles registered in the U.S.A. See your Buick dealer for terms and conditions.

A 5-year/100,000-mile (whichever comes first) Transferable Powertrain Limited Warranty plus Roadside Assistance and Courtesy Transportation.

Covered for 4 years/50,000 miles (whichever comes first): The complete vehicle | Cosmetic corrosion resulting from defects | Tires | Repairs made to correct any vehicle defect | Towing to your nearest Buick dealership | No charge for most warranty repairs

Covered for 6 years/100,000 miles (whichever comes first): Rust-through corrosion

**AN IMPORTANT NOTE ABOUT ALTERATIONS AND WARRANTIES.** Installations or alterations to the original equipment vehicle (or chassis) as distributed by General Motors are not covered by the General Motors New-Vehicle Limited Warranty. The special body company, assembler, equipment installer or upfitter is solely responsible for warranties on the body or equipment and any alterations (or any effect of the alterations) to any of the parts, components, systems or assemblies installed by GM. General Motors is not responsible for the safety or quality of design features, materials or workmanship of any alterations by such suppliers.

**ASSEMBLY.** Buick vehicles and their components are assembled or produced by different operating units of General Motors, its subsidiaries or suppliers to GM worldwide. We sometimes find it necessary to produce Buick vehicles with different or differently sourced components than originally scheduled. Since some options may be unavailable when your vehicle is assembled, we suggest that you verify that your vehicle includes the equipment you ordered or, if there are changes, that they are acceptable to you.

**ENGINES.** Buick products are equipped with engines produced by GM Powertrain or other suppliers to GM worldwide. The engines in Buick products may also be used in other GM makes and models.

**TRAILERING AND OFF-ROAD DRIVING INFORMATION.** Please go to buick.com and carefully review the vehicle Owner's Manual for important safety information about trailering or off-road driving in your vehicle.

**A NOTE ABOUT CHILD SAFETY.** Always use safety belts and the correct restraint for your child's age and size. Even in vehicles equipped with the Passenger Sensing System, children are safer when properly secured in a rear seat in the appropriate infant, child or booster seat. Never place a rear-facing infant restraint in the front seat of any vehicle equipped with a passenger air bag. See the Owner's Manual and child safety seat instructions for more safety information.

**ENHANCE YOUR OWNERSHIP EXPERIENCE.** The Owner Center at My GMLink is an online service that helps you make the most of your vehicle ownership.

Sign up for e-mail reminders about service visits | Keep an online history of services performed | Read your vehicle Owner's Manual, warranty and more online | Receive the recall notices that apply only to your vehicle | Watch do-it-yourself videos and much more Register today at mygmlink.com.

GM, the GM logo, Buick, the Buick logo, OnStar, the OnStar emblem, QuietTuning and the slogans, emblems, vehicle model names, vehicle body designs and other marks appearing in this catalog are the trademarks and/or service marks of General Motors Corporation, its subsidiaries, affiliates or licensors. The XM name and related logos are registered trademarks of XM Satellite Radio, Inc. ©2009 General Motors Corporation. All rights reserved. Litho in U.S.A., July 2009.

To learn more about why Goodwrench service is the perfect companion for your Lucerne, click on goodwrench.com.



EXTERIOR COLORS

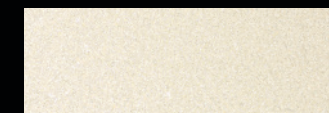


QUICKSILVER METALLIC

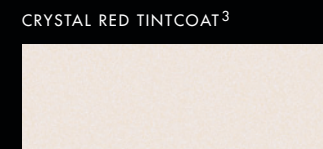


PEARL FROST TRICOAT<sup>3</sup>

BLACK ONYX

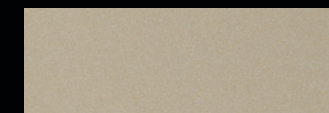


WHITE DIAMOND TRICOAT<sup>3</sup>



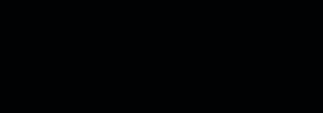
WHITE OPAL<sup>4</sup>

LIGHT BRONZE METALLIC<sup>3/5</sup>



SAND BEIGE METALLIC<sup>5</sup>

CRYSTAL RED TINTCOAT<sup>3</sup>

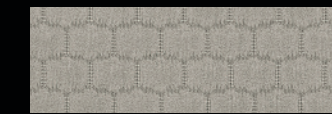


CYBER GRAY METALLIC

INTERIOR COLORS



CASHMERE CLOTH



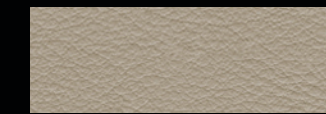
TITANIUM CLOTH



CASHMERE LEATHER



TITANIUM LEATHER



SHALE LEATHER



EBONY LEATHER

Cashmere and Shale interiors are accented with Cocoa trim. Titanium interiors are accented with Dark Titanium trim. Ebony interior is accented with Ebony trim.

Our belief in continual improvement and accomplishment extends beyond our products to the world in which we live. That's why this catalog was produced with FSC-certified and environmentally sustainable printing practices, including zero landfill waste and minimal VOC emissions.



Mixed Sources

Product group from well-managed forests, controlled sources and recycled wood or fiber  
www.fsc.org Cert no. SCC-COC-00533  
© 1996 Forest Stewardship Council

