

REGAL | BUICK.COM

THE NEW CLASS OF WORLD CLASS



2011 | BUICK REGAL

The world is big. To make the journey, you better be quick. You better deliver precise, agile handling. You better be sleek.

2011 BUICK REGAL ITS ARRIVAL IS A DEPARTURE



The world is big. To make the journey, you better be quick. You better deliver precise, agile handling. You better be sleek.

It's the premium sport sedan born in Europe and bred on the Autobahn. Discover the Buick that throws expectations a curve.



DESIGNED FOR THE ENVIRONMENT IT MOVES IN, REGAL HARNESSSES THE POWER OF WIND.

LOOKING AS IF Poured OVER ITS STRUCTURE, EACH LINE IS SCULPTED TO TURN AIR INTO AN ALLY.



ATTRACTS LOTS OF STARES, BUT LITTLE RESISTANCE.

Exhaustive hours in a wind tunnel taught us many things. Like how to minimize onrushing air and create little wind resistance—Regal has the refined aerodynamics you'd expect of a performance car. It's the five-passenger sport sedan with the look of a coupe.

Regal's flowing lines also have a practical performance side. The cornered position of its wheels, a wide track and long wheelbase give Regal a planted road stance. The carved blade-like side sculpting lends a sense of precision, purpose and motion. Every line, every detail and every curve come together seamlessly to attract a lot of attention.

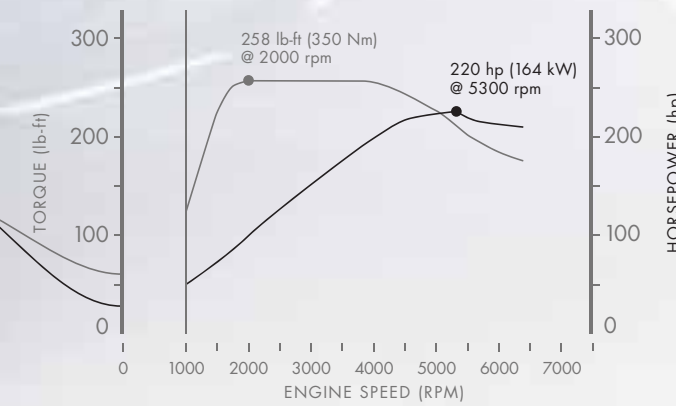
aero dynamics





The turbo combines up to 20 psi of potent boost through an intercooler to help pack the cylinders with cooled air. Intake temperature is reduced by nearly 212 degrees Fahrenheit (100 degrees Celsius) to enhance performance because cooler air is denser for optimal combustion. Then, direct fuel injection atomizes fuel directly into the combustion chamber to further cool the charge and enable a higher compression ratio. Specifically designed intake ports generate precise air flows to produce a thorough burn of the air/fuel mixture. This helps Regal produce the power of a V-6 from only four cylinders.

Putting all of this power in your right hand is an advanced electronically controlled 6-speed automatic transmission with Driver Shift Control for a "hands-on" experience. Just move the gear selector to the left—no clutch to push—and a quick tap is all you need for smooth, crisp shifts. For those who long for some clutch-pedal footwork, a 6-speed manual will be available to order in late 2010.



**ITS RESPONSE IS ALL A BLUR.**

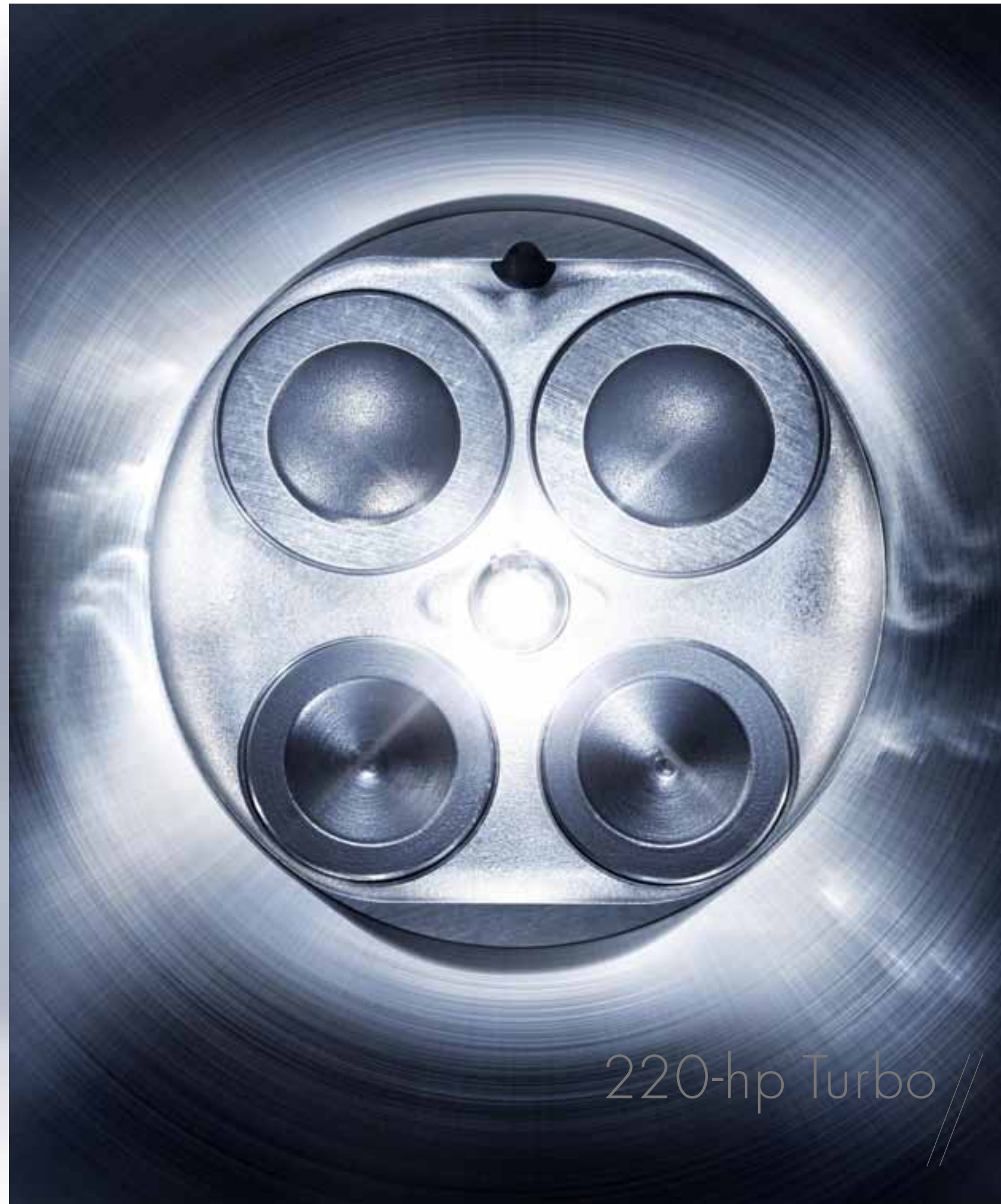
To amplify Regal's sport-injected performance even further, we created Regal CXL Turbo<sup>1</sup> and gave it a 2.0L ECOTEC<sup>®</sup> DOHC Variable Valve Timing (VVT) intercooled turbocharged engine with direct cylinder fuel injection. With 220 hp<sup>2</sup> and 258 lb-ft of torque,<sup>2</sup> its dual-scroll turbo technology generates nearly instantaneous acceleration.

<sup>1</sup>AVAILABLE FALL 2010. <sup>2</sup>Based on GM testing. Official SAE certification not yet available. Regal CXL Turbo shown in Quicksilver Metallic.

**ENTERS BLOODSTREAM FAST.**

Hit the accelerator, but don't blink. Regal CXL Turbo's dual-scroll turbocharger responds immediately. Suddenly you've got a racing-inspired engine on performance enhancers. Its dual-exhaust passages guide gases at nearly 1,832 degrees Fahrenheit (1,000 degrees Celsius) directly to turbine blades spinning up to 162,000 rpms—that's 2,700 revolutions per second. Power from these blades drives a compressor that develops the boost.

As you continue to depress the accelerator, you're not thinking, "how can only 2 liters generate so much power?" But that grin on your face says it all.



220-hp Turbo



**WE LOOKED DEEP INSIDE TO FIND OUR REAL STRENGTH.**

Inside Regal CXL's 2.4L 182-hp ECOTEC engine, you'll find a technological marvel. Dual overhead cams, variable valve timing and direct fuel injection deliver the optimal balance of low-end torque and high-end horsepower. This ingenious engineering produces enhanced performance while offering impressive efficiency of 20 city/30 hwy mpg.<sup>1</sup>

Ensuring all of this power gets where it needs to go is advanced gearbox technology. Regal's electronically controlled 6-speed automatic transmission features Driver Shift Control for a "hands-on" experience without having to use a clutch.



182-hp ECOTEC //



YOU CAN'T OWN THE ROAD. BUT YOU CAN ACQUIRE CONTROLLING INTEREST.

Regal CXL Turbo's available class-exclusive Interactive Drive Control System offers two selectable modes that adjust suspension, steering, throttle, transmission and stability systems in real time to personalize your driving experience. It continuously adjusts handling, while four-channel anti-lock braking, traction control and StabiliTrak stability control speak to each other to optimize Regal's response to every inch of the road.



SPORT

Push the Sport mode button (shown at left) and Regal sharpens its speed-sensitive steering response. The throttle quickens and the transmission inputs become crisper.

While electronically controlled dampers—suspension controls—stiffen to ensure optimum road holding and a heightened active driving experience. Each component is tuned for taut handling characteristics to improve driver connection and confident road command.

You can even customize which of these functions you want activated/deactivated through the available Navigation System for a personalized driving experience.

TOUR

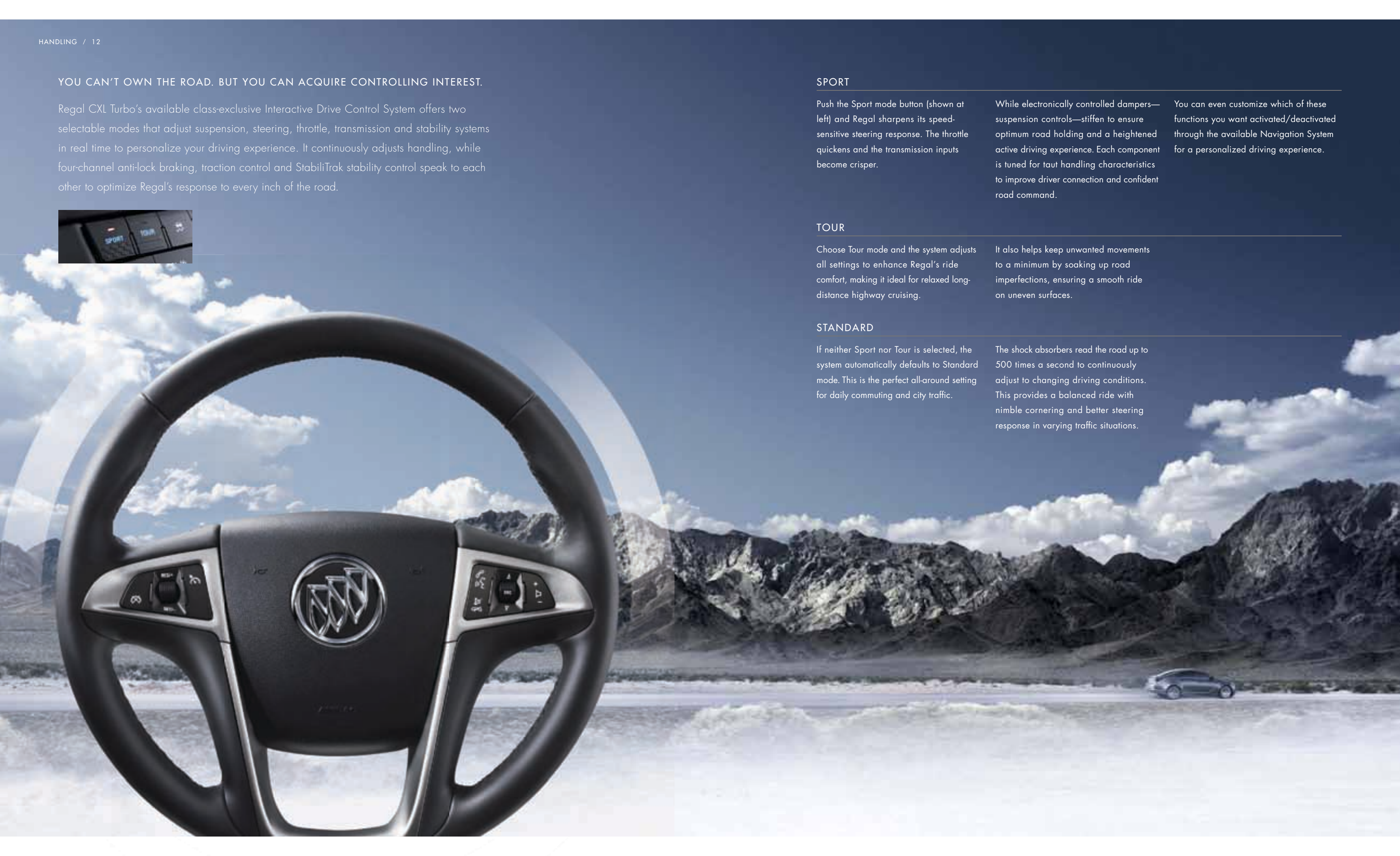
Choose Tour mode and the system adjusts all settings to enhance Regal's ride comfort, making it ideal for relaxed long-distance highway cruising.

It also helps keep unwanted movements to a minimum by soaking up road imperfections, ensuring a smooth ride on uneven surfaces.

STANDARD

If neither Sport nor Tour is selected, the system automatically defaults to Standard mode. This is the perfect all-around setting for daily commuting and city traffic.

The shock absorbers read the road up to 500 times a second to continuously adjust to changing driving conditions. This provides a balanced ride with nimble cornering and better steering response in varying traffic situations.





**EXHILARATION. WE'VE MADE A SPORT OUT OF IT.**

Being born and raised in Europe, the land of demanding Autobahn speeds, harrowing curves of the famed Nürburgring road course and ever-changing mountain elevations, Regal rises to and exceeds those challenges.

Simply touch the Sport mode button on Regal CXL Turbo's available Interactive Drive Control and your ride suddenly becomes dynamic and highly responsive. It optimizes Regal's stability at high speeds for spirited driving, recalibrates the suspension and steering response for tight curves and increases the powertrain's reaction to the accelerator and Driver Shift Control tap shifting.



// Sport mode



VARIABLE EFFORT STEERING (CXL Turbo) automatically reduces hydraulic assistance at high speeds for heightened "steering feel." More assist comes at city speeds to provide low-effort maneuverability.

FOUR-LINK INDEPENDENT REAR SUSPENSION uses an aluminum lower link for reduced weight and enhanced response. Suspension geometry and kinematics are specifically tuned to give excellent ride/tracking characteristics even on rough surfaces. It helps keep Regal stable when set on line, making it easy to drive.

MACPHERSON STRUT FRONT SUSPENSION utilizes aluminum components to optimize unsprung weight. Also available are lightweight 19-inch alloy wheels on CXL Turbo (shown above). Together with the MacPherson struts, these chassis and suspension elements provide precise steering and excellent body and wheel control for a smooth ride and firm, stable braking.

STABILITRAK AND FULL-FUNCTION TRACTION CONTROL help to form a stronger bond with the road. Both integrated systems constantly monitor the vehicle to help retain traction and assist the driver in maintaining their steering path for optimal control.

### ITS INDEPENDENCE IS QUITE CONTROLLING.

It doesn't take an engineering degree to appreciate Regal's adhesive handling. Designing and calibrating all of its precision intricacies certainly does. True driver appreciation for Regal's confident handling comes from its uncanny ability to seamlessly respond—in sync with your steering wheel commands. You encounter a tight curve, and Regal stays exactly where you place it, carving a precise line through the turn's arc. Your geometry teacher would be proud.



You're always in the on position because controls, gauges and optional

Navigation System with multi-function controller allow you to instantly command Regal's performance.



You'll find a hard drive packing 40GB<sup>1</sup> of navigational power and music storing capacity for thousands of your favorite tunes. Like your home DVR, you can even pause and replay live radio.

It allows you to hear up to 20 minutes of previously recorded programming. There's also a USB port to connect your iPod.<sup>2</sup> And again to keep your eyes on the road, hands-free calling is yours with Bluetooth<sup>®</sup> connectivity.<sup>2</sup>

Also within fingertip reach is a multi-function controller that allows you to easily select from the navigation, phone or audio screen menus. You'll also be just a push of the blue button away from OnStar,<sup>4</sup> which is standard for one year.

The Directions and Connections<sup>®</sup> plan includes voice-guided Turn-by-Turn Navigation. Plus, choose the previously mentioned Nav System and Destination Download sends directions to your Nav screen without having to pull over and enter anything. XM Radio<sup>5</sup> also comes standard with three trial months of nearly every genre of commercial-free music, plus sports, news, talk and entertainment.

- Photos from top to bottom, at right:
- / Steering-wheel-mounted Bluetooth controls
  - / Performance-oriented 12-way power driver's seat
  - / Available Harman Kardon<sup>®</sup> premium 9-speaker sound system
  - / USB port
  - / Easy-to-view Navigation screen
  - / OnStar

**EVEN YOUR VOICE BECOMES MORE POWERFUL.**

Since Regal is all about making the most of your drive, its available voice-activated Navigation System<sup>3</sup> with multi-function controller (shown bottom right) helps keep you clearly focused on the road. You tell the Nav System where you want to go, it tells you how to get there.

<sup>1</sup>10GB music storage. <sup>2</sup>30GB navigation. <sup>2</sup>Go to [gm.com/bluetooth](http://gm.com/bluetooth) to find out which Bluetooth phones are compatible with the vehicle. <sup>3</sup>Map coverage available in the United States, U.S. Virgin Islands, Puerto Rico and Canada. <sup>4</sup>Visit [onstar.com](http://onstar.com) for coverage map, details and system limitations. Services vary with conditions. <sup>5</sup>XM Radio requires a subscription, sold separately by XM after the first 90 days. XM Radio U.S. service only available in the 48 contiguous United States and the District of Columbia. For more information, visit [gm.xmradio.com](http://gm.xmradio.com).





YOUR EARS DESERVE A THRILL RIDE, TOO.

Regal packs a lot of entertainment power as well. With an available Harman Kardon 320-watt, nine-speaker premium sound system, your ears will be in for quite a ride. Every speaker is positioned to optimize Regal's unique acoustical environment.

And what good is performance if you can't share it with friends? That's why we gave Regal plenty of room for five with leather-appointed French-seam stitched seats throughout and heated ones up front.

**SAFETY. THIS IS THE ONLY PLACE WE PLAY IT SAFE.**

Everything in Regal is about heightening your senses, including your sense of well-being. That's why it's designed to take a highly active approach to safety.

It starts with an optimized Body Frame Integral (BFI) structure that helps protect you and fellow passengers in impact situations. This holistically designed structure strategically positions high-strength steel. This helps enable a refined ride and handling while creating a protective safety cage for occupant protection. Technology includes dual pretensioners for front safety belts, a patented Pedal Release System, side-impact door beams and a lot more.

Regal's front air bags use two-stage inflation to help prevent injuries caused by the air bags themselves.<sup>1</sup> Front-seat side-impact air bags and head curtain side air bags for front and rear outboard occupants provide additional protection in side crashes.<sup>1</sup> Regal also offers available rear outboard seat-mounted thorax air bags.<sup>1</sup> And with OnStar's Automatic Crash Response,<sup>2</sup> you can get help fast even if you can't ask for it.

<sup>1</sup>Always use safety belts and the correct restraint for your child's age and size. Even in vehicles equipped with the Passenger Sensing System, children are safer when properly secured in a rear seat in the appropriate infant, child or booster seat. Never place a rear-facing infant restraint in the front seat of any vehicle equipped with a passenger air bag. See the Owner's Manual and child safety seat instructions for more safety information.

<sup>2</sup>OnStar acts as a link to existing emergency service providers.

Air bag inflation can cause severe injury or death to anyone too close to the bag when it deploys. Be sure every occupant is properly restrained.



FRONT CRUSH ZONES

DOORS INCLUDE  
STEEL-REINFORCING  
BEAMS

STRONG PASSENGER  
COMPARTMENT

REAR CRUSH ZONES

THE DEVIL HATES THESE DETAILS.

Engineering a premium sport sedan means considering everything. No matter how small. In fact, more than 1,000 critical points throughout Regal have been obsessively adhered to—resulting in precise measures of craftsmanship. With tight interior, exterior and under-hood surface-to-surface harmony, Regal achieves world-class fit and finish.

One look at the available High Intensity Discharge (HID) projector beam headlamps and signature LED running lamps, and you realize quality shines through every inch of Regal. The same goes for the thickened windshield for reduced noise, a 12-way power driver's seat, a hard-drive-based Navigation System, a direct injection turbocharged engine and an Interactive Drive Control System.



A BLAST FROM THE FUTURE.

The idea was to push Regal as far as it would go. We never stopped. The adrenaline-surging Regal GS concept is proof that Regal CXL and Regal CXL Turbo<sup>1</sup> aren't simply the end of the Buick performance story. But rather, just the beginning.

Watch out. The future is coming fast.





INTERIOR COLORS

CASHMERE INTERIOR WITH LEATHER-APPOINTED SEATING, COCOA TRIM AND WOOD GRAIN ACCENTS.

EBONY INTERIOR WITH LEATHER-APPOINTED SEATING, EBONY TRIM AND PIANO BLACK ACCENTS.



CASHMERE INTERIOR WITH LEATHER-APPOINTED SEATING, COCOA TRIM AND WOOD GRAIN ACCENTS.



ACCESSORIES

from top to bottom:

**ILLUMINATED DOOR SILL PLATES**  
Ice-blue accent lighting welcomes you into Buick Regal. The Buick nameplate is illuminated on the threshold of each door sill, providing a striking appearance and complementing the ambient lighting in the well-crafted interior.

**REGAL PEDAL COVERS** Feature a high-tech brushed aluminum finish and drilled holes for a performance feel.

**CARGO AREA TRAY** Designed to protect Regal's trunk area, its heavy-duty nonskid surface and raised outer lip help contain cargo and spills.

**ALL-WEATHER FLOOR MATS** Front and rear premium floor mats, custom-designed to conform to Regal, have deep patterned grids to collect rain, mud, snow and debris. Nibs on back help hold mats in place.

**REAR PARKING ASSIST** The Rear Parking Assist Package aids drivers with parking while in reverse. Sensors detect certain obstacles and alert the driver with a warning signal of a series of beeps (not shown).

**SMOKERS PACKAGE** Fits perfectly into the standard cupholder, is easy to remove, and is constructed of flame-retardant material (not shown).

**18- AND 19-INCH WHEELS**  
These wheels add flair to complement Regal's exterior design. The 18-inch 7-spoke chrome-plated design provides a highly styled, brilliant finish. And the 19-inch 5-spoke design is painted in gray with polished accents for a more sporty appearance.

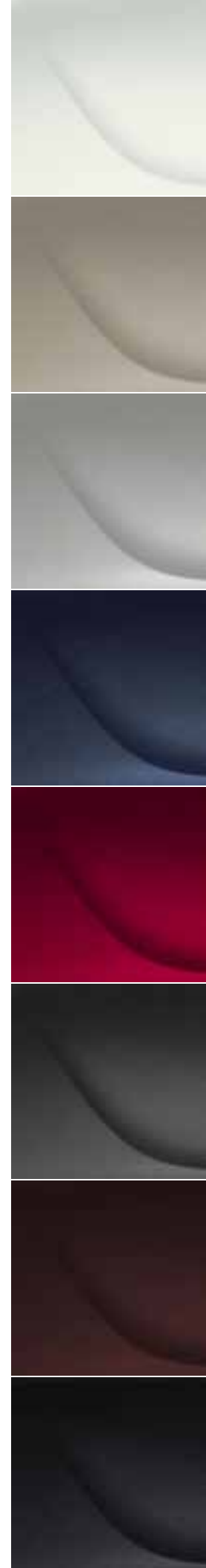
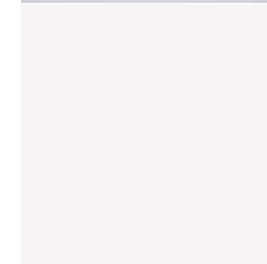
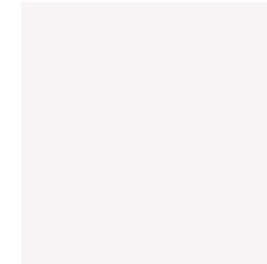
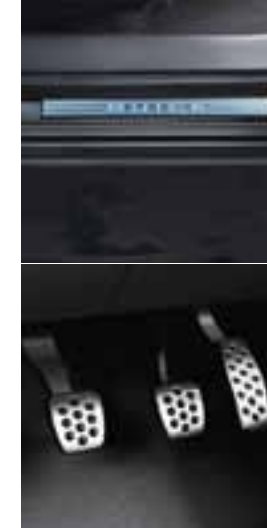


<sup>1</sup>Additional charge, premium paint.  
<sup>2</sup>Late availability.

EXTERIOR COLORS

from top to bottom:

- SUMMIT WHITE
- STONE METALLIC
- QUICKSILVER METALLIC
- MAJESTIC BLUE METALLIC
- RUBY RED METALLIC<sup>1,2</sup>
- GRANITE GRAY METALLIC
- ESPRESSO BRONZE METALLIC<sup>2</sup>
- CARBON BLACK METALLIC<sup>1</sup>



	CXL	CXL TURBO
--	-----	-----------

#### VEHICLE ORDERING

**REGAL CXL — 6 EASY WAYS TO ORDER** Order your Regal CXL 6 different ways. Each will come with all standard equipment plus the options listed within the configurations below:

#### ORDER CONFIGURATIONS

1	Standard Equipment Only
2	Standard Equipment, Sunroof
3	Standard Equipment, Comfort and Convenience Package
4	Standard Equipment, Sunroof, Comfort and Convenience Package
5	Standard Equipment, Sunroof, Comfort and Convenience Package, Premium Audio, Rear-Seat Thorax Air Bags <sup>1</sup>
6	Standard Equipment, Sunroof, Comfort and Convenience Package, Premium Audio, Rear-Seat Thorax Air Bags, <sup>1</sup> Navigation System (UYS) <sup>2</sup>

**REGAL CXL TURBO — 7 EASY WAYS TO ORDER** Order your Regal CXL Turbo 7 different ways. Each will come with all standard equipment plus the options listed within the configurations below:

#### ORDER CONFIGURATIONS

1	Standard Equipment Only
2	Standard Equipment, Sunroof
3	Standard Equipment, Sunroof, Premium Audio, Rear-Seat Thorax Air Bags, <sup>1</sup> HID Headlamps
4	Standard Equipment, Sunroof, Premium Audio, Rear-Seat Thorax Air Bags, <sup>1</sup> HID Headlamps, Navigation System (UYS) <sup>2</sup>
5	Standard Equipment, Premium Audio, Rear-Seat Thorax Air Bags, <sup>1</sup> HID Headlamps, Interactive Drive Control System with 19" Wheels
6	Standard Equipment, Sunroof, Premium Audio, Rear-Seat Thorax Air Bags, <sup>1</sup> HID Headlamps, Interactive Drive Control System with 19" Wheels
7	Standard Equipment, Sunroof, Premium Audio, Rear-Seat Thorax Air Bags, <sup>1</sup> HID Headlamps, Interactive Drive Control System with 19" Wheels, Navigation System (UYS) <sup>2</sup>

#### PACKAGES

<b>COMFORT AND CONVENIENCE PACKAGE</b> Includes 120-volt power outlet, front passenger 12-way power seat adjuster (includes 4-way power lumbar) and Ultrasonic Rear Parking Assist	A	S
--	---	---

#### POWER AND PERFORMANCE

<b>DRIVETRAIN</b> Front-wheel drive	S	S
<b>ENGINES</b> 2.4L ECOTEC SIDI VVT 4-cylinder	S	–
2.0L ECOTEC SIDI VVT 4-cylinder turbo	–	S
<b>TRANSMISSION</b> 6-speed automatic, electronically controlled with overdrive, includes Driver Shift Control, tap up/tap down	S	S
<b>AXLE</b> 3.23 ratio	S	–
3.33 ratio	–	S
<b>SUSPENSION</b> Front MacPherson strut with rear independent 4-link	S	S
<b>STEERING</b> Power, hydraulic, rack-and-pinion	S	–
Power, hydraulic, rack-and-pinion, variable-effort	–	S
<b>BRAKES</b> 4-wheel anti-lock, 4-wheel disc with brake assist	S	S
<b>TRACTION CONTROL</b> Full-function	S	S
<b>STABILITRAK</b> Vehicle stability enhancement system	S	S
<b>INTERACTIVE DRIVE CONTROL SYSTEM</b> Includes Q9S 19" aluminum wheels	–	A
<b>EXHAUST</b> Dual stainless steel	S	–
Dual stainless steel, dual outlet with bright tips	–	S
<b>BATTERY</b> Maintenance-free with rundown protection	S	S
<b>TIRES</b> P235/50R18 V-rated all-season blackwall	S	S
P245/40R19 V-rated all-season blackwall	–	A

#### COMFORT AND CONVENIENCE

<b>SEAT TRIM</b> Leather-appointed with French-seam stitching	S	S
<b>SEATING</b> Front bucket seats with 2-way adjustable headrests	S	S
Rear 60/40 split folding	S	S
Heated driver and front passenger seats	S	S
<b>SEAT ADJUSTER</b> Driver 12-way power (includes 4-way power lumbar)	S	S
Front passenger 12-way power (includes 4-way power lumbar)	A <sup>3</sup>	S
<b>ARMRESTS</b> Front center	S	S
Rear with 2 cupholders	S	S
<b>ASSIST HANDLES</b> Front passenger and rear outboard	S	S
Coat hooks, on rear passenger assist handles	S	S
<b>DISPLAY</b> Enhanced one-color with driver instrument information	S	S
Display compass	S	S

	CXL	CXL TURBO
--	-----	-----------

#### COMFORT AND CONVENIENCE (CONTINUED)

<b>SUNROOF</b> Power, tilt-sliding with sunshade	A	A
<b>BLUETOOTH<sup>4</sup></b> Personal cell-phone connectivity to vehicle audio system	S	S
<b>STEERING WHEEL</b> Leather-wrapped rim	S	S
Steering-wheel-mounted audio controls	S	S
Tilt and telescopic adjustable steering column	S	S
<b>CRUISE CONTROL</b>	S	S
<b>PARKING BRAKE</b> Electronic	S	S
<b>LIGHTING</b> Interior front and rear overhead, floor, cargo, glove box and dual front and rear reading lamps	S	S
<b>MIRRORS</b> Inside rearview auto-dimming	S	S
<b>CLIMATE CONTROL</b> Dual-zone automatic with individual settings for driver and front passenger and rear-seat heating/cooling outlets	S	S
<b>AIR FILTRATION SYSTEM</b>	S	S
<b>DEFOGGER</b> Rear-window electric	S	S
<b>WINDOWS</b> Power with front express-up/-down, rear express-down	S	S
<b>CUPHOLDERS</b> 2 front console, covered; 2 rear armrest	S	S
<b>AUXILIARY POWER OUTLETS</b> 2 12-volt	S	S
120-volt AC household-style power outlet (low wattage)	A <sup>3</sup>	S
<b>FLOOR MATS</b> Carpeted front and rear with anchors	S	S
<b>VISORS</b> Driver and front passenger illuminated vanity mirrors, sliding	S	S
<b>CARGO NET</b>	S	S
<b>REMOTE KEYLESS ENTRY</b> Standard-range with lock control	S	S
<b>RETAINED ACCESSORY POWER</b> Power windows, audio system remain operational after ignition is switched off for 10 minutes or until a door is opened	S	S
<b>ULTRASONIC REAR PARKING ASSIST</b>	A <sup>3</sup>	S

#### ENTERTAINMENT SYSTEMS

<b>(UYE) AM/FM/XM STEREO<sup>5</sup></b> Single-disc CD player with MP3 playback, auxiliary input jack, seek-and-scan, digital clock, auto-tone control, speed-compensated volume and TheftLock	S	S
<b>(UYS) AM/FM/XM STEREO<sup>5</sup></b> Single-disc CD/DVD player, 40GB hard drive, MP3 playback, HDD-based voice-activated navigation <sup>2</sup> (includes pause and play feature) with console-mounted multi-function controller	A	A
<b>AUDIO</b> 7-speaker system	S	S
<b>PREMIUM AUDIO</b> Harman Kardon 320-watt 9-speaker system	A	A
<b>USB PORT</b> Connectivity for various digital media	S	S
<b>XM RADIO<sup>5</sup></b> With 3 trial months service	S	S

	CXL	CXL TURBO
--	-----	-----------

#### SAFETY AND SECURITY

<b>DAYTIME RUNNING LAMPS</b>	S	S
<b>SAFETY BELTS</b> 3-point, all seating positions	S	S
<b>LATCH SYSTEM</b> (Lower Anchors and top Tethers for CHildren) for child safety seats in all rear seating positions	S	S
<b>AIR BAGS<sup>1</sup></b> Dual-stage frontal and side-impact, driver and right-front passenger and head curtain side-impact, front and rear outboard seating positions and front Passenger Sensing System	S	S
Air bags, rear outboard seat-mounted, thorax	A	A
<b>POWER DOOR LOCKS</b> Programmable with lockout protection	S	S
<b>ONSTAR<sup>6</sup></b> One year of Directions & Connections <sup>®</sup> plan	S	S
<b>THEFT-DETERRENT SYSTEM</b> Content theft alarm	S	S
Engine immobilizer, vehicle and PASS-Key III	S	S
<b>TIRE PRESSURE MONITOR SYSTEM</b> Does not apply to spare tire	S	S

#### STYLING AND FUNCTIONALITY

<b>LIGHTS</b> Halogen composite headlamps with Twilight Sentinel, flash-to-pass feature and automatic on/off	S	S
<b>BI-XENON HID HEADLAMPS</b>	–	A
<b>FOG LAMPS</b> Front halogen	S	S
<b>GLASS</b> Solar-Ray light-tinted	S	S
<b>OUTSIDE MIRRORS</b> Heated power-adjustable, manual folding	S	S
<b>CHROME GRILLE</b> Waterfall design	S	S
<b>DOOR HANDLES</b> Body color	S	S
<b>SILL PLATES</b> Front, bright	S	S
<b>ANTENNA</b> Integral rear roof-mounted, body color	S	S
<b>LAMPS</b> Center High-Mounted Stop Lamp (CHMSL)	S	S
<b>SPOILER</b> Integral rear deck lid	S	S
<b>TIRE</b> Compact spare, includes steel wheel and jack kit	S	S
<b>WIPERS</b> Front intermittent	S	S

<sup>1</sup>Always use safety belts and the correct restraint for your child's age and size. Even in vehicles equipped with the Passenger Sensing System, children are safer when properly secured in a rear seat in the appropriate infant, child or booster seat. Never place a rear-facing infant restraint in the front seat of any vehicle equipped with a passenger air bag. See the vehicle Owner's Manual and child safety seat instructions for more safety information.

<sup>2</sup>Map coverage available in the United States, U.S. Virgin Islands, Puerto Rico and Canada.

<sup>3</sup>Included and only available with Comfort and Convenience Package.

<sup>4</sup>Go to gm.com/bluetooth to find out which Bluetooth phones are compatible with the vehicle.

<sup>5</sup>XM Radio requires a subscription, sold separately by XM after the first 90 days. XM Radio U.S. service only available in the 48 contiguous United States and the District of Columbia. For more information, visit gm.xmradio.com.

<sup>6</sup>OnStar services require vehicle electrical system (including battery), wireless service and GPS satellite signals to be available and operating for features to function properly. OnStar acts as a link to existing emergency service providers. Subscription service agreement required. Call 1-888-4ONSTAR (466-7827) or visit onstar.com for OnStar's Terms and Conditions, Privacy Policy, details and system limitations.

		CXL	CXL TURBO
<b>WHEELS</b>			
<b>Q56</b> 18" 13-spoke painted alloy		S	S
<b>Q9S</b> 19" 10-spoke ultra-bright machined alloy. Included when Interactive Drive Control System is ordered.		-	A



Q56 18"



Q9S 19"

SPECIFICATIONS	CXL	CXL TURBO
<b>ENGINE TYPE</b>	2.4L ECOTEC SIDI VVT 4-cylinder	2.0L ECOTEC SIDI VVT 4-cylinder turbo
<b>HORSEPOWER – HP @ RPM</b>	182 @ 6700	220 @ 5300 <sup>1</sup>
<b>TORQUE – LB-FT @ RPM</b>	172 @ 4900	258 @ 2000 <sup>1</sup>
<b>GM-ESTIMATED MPG<sup>2</sup></b>	20 city/30 hwy	18 city/29 hwy

CAPACITIES		
<b>FUEL TANK CAPACITY (APPROX.)</b>	18.4 gallons	18.4 gallons
<b>CARGO CAPACITY<sup>3</sup></b>	14.3 cubic feet	14.3 cubic feet

S = Standard A = Available - = Not Available

<sup>1</sup>Based on GM testing. Official SAE certification not yet available. <sup>2</sup>Based on GM testing. Official EPA estimates not yet available. <sup>3</sup>Cargo and load capacity limited by weight and distribution.

## IMPORTANT WORDS ABOUT THIS CATALOG.

Since some information may have been updated since the time of printing (March 2010), please check with your Buick dealer for complete details. Buick reserves the right to lengthen or shorten the model year for any product for any reason, or to start and end model years at different times.

**NEW-VEHICLE LIMITED WARRANTY.** This warranty is for GM vehicles registered in the U.S.A. See your Buick dealer for terms and conditions.

A 5-year/100,000-mile (whichever comes first) Transferable Powertrain Limited Warranty plus Roadside Assistance and Courtesy Transportation.

Covered for 4 years/50,000 miles (whichever comes first): The complete vehicle | Cosmetic corrosion resulting from defects | Tires | Repairs made to correct any vehicle defect | Towing to your nearest Buick dealership | No charge for most warranty repairs

Covered for 6 years/100,000 miles (whichever comes first): Rust-through corrosion

**AN IMPORTANT NOTE ABOUT ALTERATIONS AND WARRANTIES.** Installations or alterations to the original equipment vehicle (or chassis) as distributed by General Motors are not covered by the General Motors New-Vehicle Limited Warranty. The special body company, assembler, equipment installer or upfitter is solely responsible for warranties on the body or equipment and any alterations (or any effect of the alterations) to any of the parts, components, systems or assemblies installed by GM. General Motors is not responsible for the safety or quality of design features, materials or workmanship of any alterations by such suppliers.

**ASSEMBLY.** Buick vehicles and their components are assembled or produced by different operating units of General Motors, its subsidiaries or suppliers to GM worldwide. We sometimes find it necessary to produce Buick vehicles with different or differently sourced components than originally scheduled. Since some options may be unavailable when your vehicle is assembled, we suggest that you verify that your vehicle includes the equipment you ordered or, if there are changes, that they are acceptable to you.

**ENGINES.** Buick products are equipped with engines produced by GM Powertrain or other suppliers to GM worldwide. The engines in Buick products may also be used in other GM makes and models.

**TRAILERING AND OFF-ROAD DRIVING INFORMATION.** Please go to [buick.com](http://buick.com) and carefully review the vehicle Owner's Manual for important safety information about trailering or off-road driving in your vehicle.

**A NOTE ABOUT CHILD SAFETY.** Always use safety belts and the correct restraint for your child's age and size. Even in vehicles equipped with the Passenger Sensing System, children are safer when properly secured in a rear seat in an appropriate infant, child or booster seat. Never place a rear-facing infant restraint in the front seat of any vehicle equipped with a passenger air bag. See the Owner's Manual and child safety seat instructions for more safety information.

**ENHANCE YOUR OWNERSHIP EXPERIENCE.** The Owner Center at My GMLink is an online service that helps you make the most of your vehicle ownership.

Sign up for e-mail reminders about service visits | Keep an online history of services performed | Read your vehicle Owner's Manual, warranty and more online | Receive the recall notices that apply only to your vehicle | Watch do-it-yourself videos and much more.

Register today at [mygmlink.com](http://mygmlink.com).

GM, the GM logo, Buick, the Buick emblem, OnStar, the OnStar emblem and the slogans, emblems, vehicle model names, vehicle body designs and other marks appearing in this catalog are the trademarks and/or service marks of General Motors, its subsidiaries, affiliates or licensors. The XM name and related logos are registered trademarks of XM Satellite Radio, Inc. ©2010 General Motors. All rights reserved. Litho in U.S.A., March 2010.

To learn more about why Goodwrench service is the perfect companion for your Regal, click on [goodwrench.com](http://goodwrench.com).

