

THE SPIRIT OF AMERICAN STYLE

It is flair without flamboyance. Art without artifice. Luxury without apology.

It's the flash of sun off a curve of chrome. The shine of paint that looks

a foot deep. The glow of fine leather. It is the calm of a quiet cabin.

And the thrill of a finely tuned engine at full song. It's physicality

informed by philosophy. The security of careful engineering and assembly.

The satisfaction of well-thought details. The idea of elegance with intelligence.

The Spirit of American Style is the ethos of legendary designer Harley Earl

beautifully interpreted for a new age. It is the heritage and the heart of

Buick. Now come see how that spirit is offered in the 2004 Rendezvous.



Studio still life / Rendezvous 2004

A word about this brochure: Some features shown throughout this brochure are available at extra cost.





American triptych

AN AMERICAN ORIGINAL.

Sometimes a vehicle will appear that simply defies conventional categorization. Is it a minivan? No way, too much strength in the styling. So is it an SUV? Can't be, it rides like a luxury sedan. Well then, a luxury sedan? Out of the question. It'll carry up to seven adults. When a vehicle crosses over those three categories, and looks great doing it, that's more than just innovation at work. That's American originality. That's Rendezvous, where the styling and capabilities of an SUV, the ride and comfort of a luxury sedan and the seating capacity of a minivan are offered in one very intelligent and very versatile vehicle. And while the concept may surprise you, the source shouldn't. Buick has been defying convention for years. But hold on, more Rendezvous innovation awaits on the inside.



Laptop, mobile phone, digital camera, CDs, coffee, even a purse or planner. There's a place for everything if that place is Rendezvous' center console. It can stow (and power) all the gear that goes with twenty-first century living.



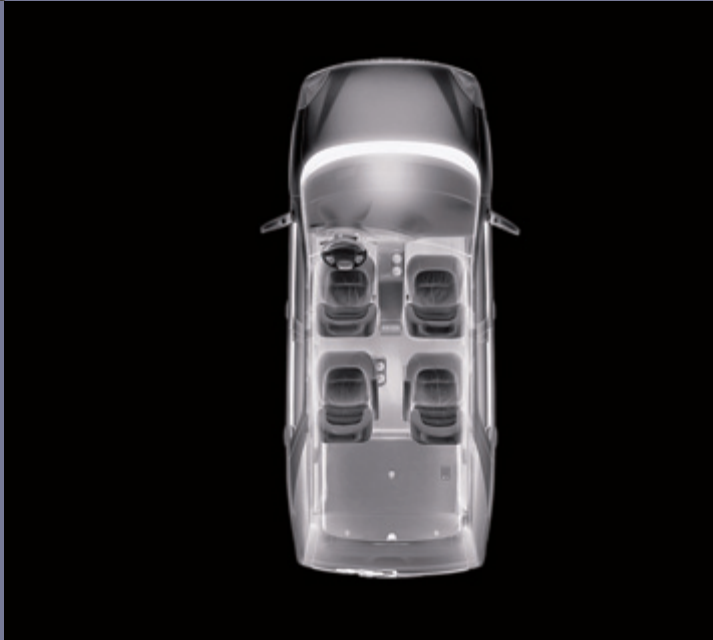
Madison Park neighborhood / Seattle



A. Second-row captain's chair seats recline, slide forward and back and are easy to fold and remove.



Six different seating configurations let you carry people and cargo just about any way you can imagine.



B. Keep your gear neatly arranged and safely out of sight in the cleverly designed rear storage system.



C. With the third-row bench seat folded flat into the floor and the second-row seats removed, you've got over 108 cubic feet for cargo. Cargo and load capacity limited by weight and distribution.



Features described are available on some models. Refer to specifications in the back for availability.





Nooksack Ridge / Washington



Rendezvous CXL interior with Gray leather appointments in seven-passenger configuration.







Ultra is a luxurious new Rendezvous experience. The beautiful monochromatic exterior has unique badging, extra touches of chrome and special 17" wheels. The interior is equally appealing, with luxury touches everywhere, including the leather-appointed front- and second-row seats with premium sueded fabric inserts, shown left. Rendezvous Ultra available January 2004.



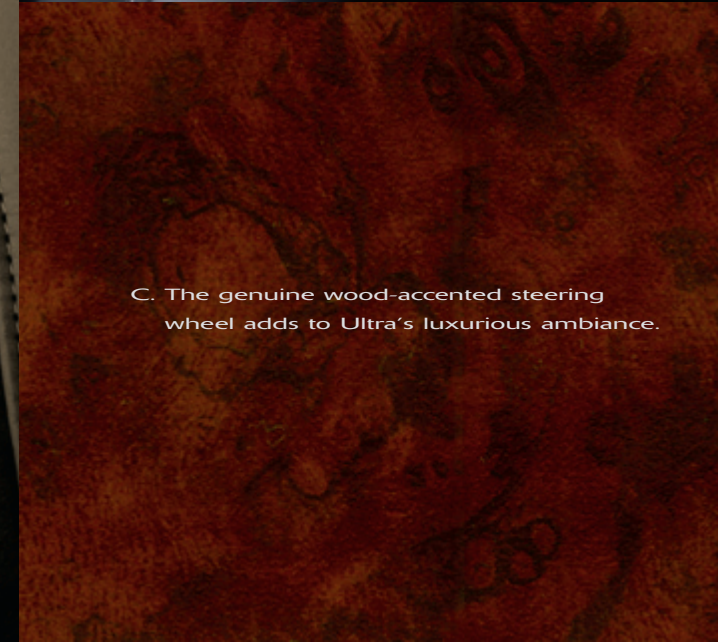
A. The name says it all. Ultra is the ultimate Rendezvous.



B. Beautiful chrome accents transform the look of the instrument panel.



D. Simulated woodgrain accents adorn the instrument panel and door trim.



C. The genuine wood-accented steering wheel adds to Ultra's luxurious ambiance.





Conzelman Rd. / Marin Headlands





California and Front Streets / San Francisco



A. OnStar® Safety and security at the touch of a button 24/7/365.

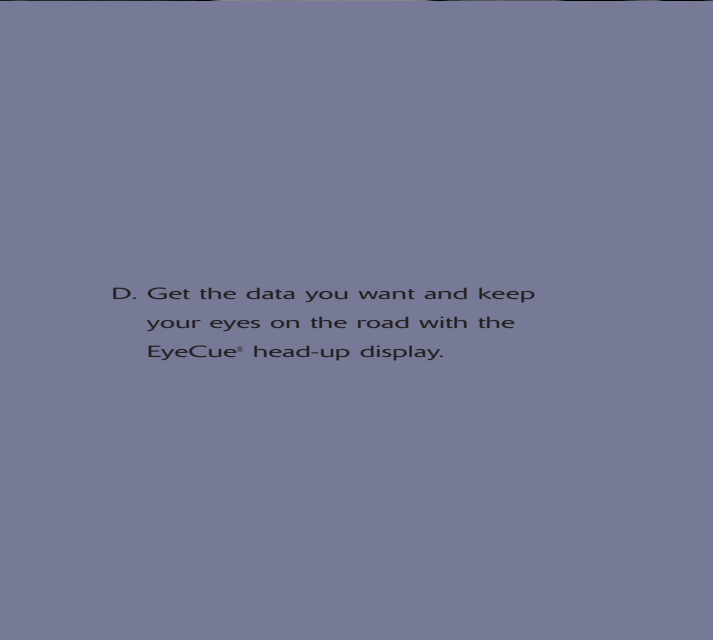
OnStar services require vehicle electrical system and analog wireless service to be available and operating for features to function properly. Visit onstar.com for system information and details.



B. Parents and kids agree: the rear-seat DVD system makes trips more enjoyable for the whole family.



C. XM® Satellite Radio. Enjoy 100 digital channels in tune in all 48 coast-to-coast states. Activation and service fees extra. Visit gm.xmradio.com for details.



D. Get the data you want and keep your eyes on the road with the EyeCue® head-up display.



E. Rear parking assist uses sonar to warn you when obstacles are in your way while backing up.



F. A dealer-installed backpack for the seatback. It's a great way to stay organized.



G. GPS/DVD navigation system. Like having the auto club right in your dash.



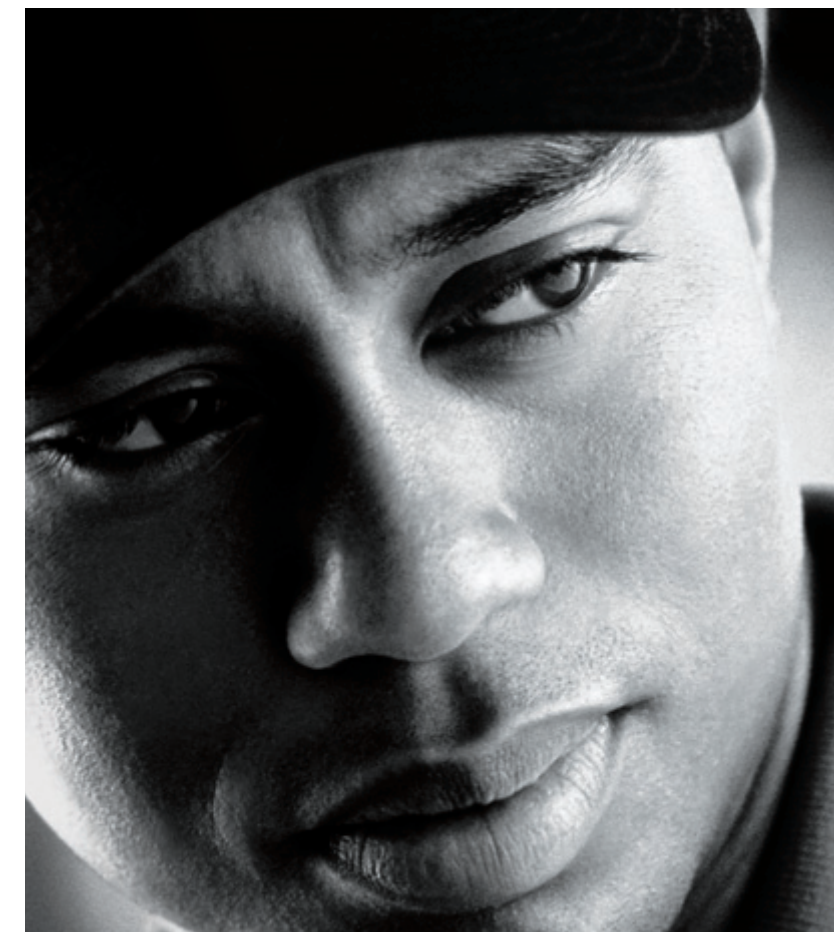
H. Rear-seat audio gives the second-row passengers a second source of sound.

Features described are available on some models. Refer to specifications in the back for availability.



I. Dual-zone climate control keeps relationships from freezing up.

Rendezvous. Century. LeSabre. Rainier. Park Avenue. Regal. Each with its own personality, yet each embodying Buick's mission to bring you a beautifully designed, carefully assembled vehicle that will deliver exceptional satisfaction with every mile you drive. The Spirit of American Style is alive and well — and at your Buick dealer now.



Tiger Woods

Buick is the Official Car of the PGA TOUR. Buick has been involved in the game of golf for nearly 50 years. That's why we're so proud to be partnered with the man pictured above. You see, we have a long history of supporting the game with style and elegance — and he's making history by playing the game in the very same way.



16" Deluxe Wheelcover

16" Aluminum Wheel



16" Chrome-Plated Aluminum Wheel



17" Aluminum Wheel (Ultra only)

INTERIOR FEATURES	CX	CXL	Ultra*
S Standard A Available — Not available			
Air bags — driver and front passenger, frontal dual-stage inflation	S	S	S
— driver and front passenger, seat-mounted side-impact (included on CX models with AWD, requires ABS brakes)	A	S	S
Air conditioning — single-zone manual	S	—	—
— dual-zone automatic climate control	—	S	S
Audio systems			
— ETR AM/FM stereo with seek/scan, digital clock, RDS display, Theftlock, CD, auto tone control, speed-compensated volume and six speakers	S	—	—
— ETR AM/FM stereo with seek/scan, digital clock, RDS display, Theftlock, cassette, CD, auto tone control, speed-compensated volume and eight speakers	—	S	—
— ETR AM/FM stereo with seek/scan, digital clock, RDS display, Theftlock, in-dash six-disc CD, auto tone control, speed-compensated volume and eight speakers	—	A	S
— ETR AM/FM stereo with seek/scan, digital clock, RDS display, Theftlock, CD, navigation system, auto tone control, speed-compensated volume and eight speakers	—	A	A
— Rear-seat audio controls, includes two headphone jacks, separate volume controls, source selection, volume and radio preset buttons	—	S	S
— XM [†] Satellite Radio (activation and service fees extra; not available in Alaska or Hawaii)	—	A	S
Cargo storage system — three covered compartments (not available with six- or seven-passenger seating)	—	S	—
Center console — includes dedicated cell phone storage, two power outlets, two cup holders, lockable storage with CD holder, plus lower storage underneath	S	S	S
Child seat anchors — upper and lower LATCH system for compatible child safety seats on outboard second-row passenger positions	S	S	S
Child security door locks — rear doors	S	S	S
Cruise control	S	S	S
Driver Information Center — includes trip computer, low oil, coolant, fuel reminders and oil life monitor	—	S	S
DVD entertainment system — overhead mounted (not available with power sunroof)	—	A	A
EyeCue[®] head-up windshield display	—	A	S
Instrumentation — full analog cluster with fuel, temperature, tachometer and speedometer	S	S	S
Lights — front- and second-row reading/courtesy and cargo area	S	S	S
OnStar[®] — includes one-year Safe & Sound service agreement**	—	S	S
Overhead console — includes storage for sunglasses and garage door remote	S	S	S
PASS-Key[®] III — passive theft-deterrent system	S	S	S
Power door locks	S	—	—
— programmable	—	S	S
Power windows — include driver express-down and passenger lockout feature	S	S	S
Remote keyless entry — includes instant alarm, perimeter lighting and security feedback	S	S	S

INTERIOR FEATURES (continued)	CX	CXL	Ultra*
Retained accessory power — allows accessories to be operated for 10 minutes or until a door is opened	S	S	S
Safety belts — lap and shoulder belts for all seating positions	S	S	S
Seats — cloth	S	—	—
— leather-appointed (available third-row seat is vinyl covered)	—	S	S
— five-passenger seating; includes front reclining bucket seats with lumbar adjustment, removable second-row 50/50 reclining flip-and-fold split-bench seat with storage armrests, fore and aft controls and cup holders	S	S	—
— six-passenger seating; includes front reclining bucket seats with lumbar adjustment, removable second-row reclining and folding captain's chairs and third-row folding bench seat with cup holders	—	A	S
— seven-passenger seating; includes front reclining bucket seats with lumbar adjustment, removable second-row 50/50 reclining flip-and-fold split-bench seat with storage armrests, fore and aft controls, cup holders and third-row folding bench seat with cup holders	—	A	A
— power seat adjuster, six-way driver	A	S	S
— power seat adjuster, six-way front passenger (requires leather-appointed seats)	—	S	S
— heated front seats (requires memory seat)	—	A	S
— memory seat and mirrors; includes two programmable settings for driver seat and outside rearview mirrors (requires heated seats)	—	A	S
Steering wheel — leather-appointed with tilt feature	S	S	S
— with mounted radio controls	A	S	S
Sun and Satellite Package — includes CD audio system with navigation, XM Satellite Radio and power sunroof	—	A	A
Theft-deterrent system — includes alarm, starter interrupt and central unlocking feature	—	S	S
Ultra Trim Package[®] — includes all the CXL Plus Package features, plus the following: monochromatic exterior paint scheme, 17" aluminum wheels with touring tires, Lt. Neutral leather-appointed front and second-row captain's chairs with premium sueded fabric inserts, burled walnut wood-accented steering wheel and simulated woodgrain accents	—	—	S
Universal transmitter — programmable three-function remote for garage door and more	S	S	S
Visor vanity mirrors — covered with driver-side lighting feature	S	—	—
— driver and passenger, covered with lighting feature	—	S	S



EXTERIOR FEATURES (continued)	CX	CXL	Ultra*
Wheels — 16" steel wheel with deluxe wheel cover	S	—	—
— 16" eight-spoke brushed aluminum	—	S	—
— 16" eight-spoke chrome-plated aluminum	—	A	—
— 17" eight-spoke aluminum	—	—	S
Windshield wipers — two-speed with variable delay	S	S	S
— rear wiper with washer	S	S	S

MECHANICAL FEATURES

Brakes — four-wheel disc	S	S	S
— four-wheel anti-lock (included on CX models with AWD, requires side-impact air bags)	A	S	S
Engine block heater	A	A	A
Drive type — front-wheel drive	S	S	—
— all-wheel drive, fully automatic on-demand system	A	A	S
Steering — power assisted rack-and-pinion	S	S	S
Suspension — front independent MacPherson strut with coil springs and anti-roll bar	S	S	S
— rear independent short- and long-arm design with monotube shocks, coil springs and anti-roll bar	S	S	S

Tire inflation monitor — requires ABS brakes and traction control	—	S	S
Traction control — full-range (available on front-wheel drive, requires ABS brakes)	A	S	S
Transmission — four-speed electronically controlled automatic with overdrive	S	S	S

Trailer Towing Package — includes wiring harness, transmission oil cooler, high-output alternator, heavy-duty engine cooling system, rear suspension with automatic rear level control and auxiliary air compressor outlet. Does not include draw bar, hitch pin and retainer clip, hitch ball and nut or hitch box cover. (These items may be ordered through your dealer.)	—	A	A
Ultrasonic rear parking assist	—	S	S

PLUS PACKAGES

CX Plus — includes all the CX standard features, plus the following: dual-zone manual air conditioning, cargo storage system, Driver Information Center, OnStar, theft-deterrent system, 16" eight-spoke brushed aluminum wheels and ultrasonic rear parking assist

Available Features — driver and front passenger side-impact bags, audio system with cassette, CD player and eight speakers, steering wheel-mounted radio controls, rear-seat audio controls, XM Satellite Radio, leather-appointed first- and second-row seats, six-passenger seating, seven-passenger seating, six-way driver power seat adjuster, six-way front passenger power seat adjuster, power sunroof, roof rack crossbows, four-wheel anti-lock brakes, engine block heater, AWD, tire inflation monitor, traction control and trailer towing package

CXL Plus — includes all the CXL standard features, plus the following: XM Satellite Radio, seven-passenger seating, heated front seats, memory seat and mirrors, roof rack crossbows and touring tires

Available Features — audio system with six-disc in-dash CD player, audio system with CD player and navigation system, DVD entertainment system, EyeCue head-up windshield display, six-passenger seating, Sun and Satellite Package, power sunroof, 16" eight-spoke chrome-plated aluminum wheels, engine block heater, AWD and trailer towing package

*Available January 2004.
 **OnStar services require vehicle electrical system and analog wireless service to be available and operating for features to function properly. OnStar uses existing emergency service providers as well as analog wireless and satellite technologies and is subject to their limitations. The U.S. Federal Communications Commission (FCC) ruled that wireless carriers will no longer be required to support the analog wireless network after February 16, 2008. After that time, if the carriers for OnStar elect to only provide digital service, OnStar service will only be available through dual-mode hardware, which may require the purchase of a system upgrade. Call 1-888-4ONSTAR (1-888-466-7827), see your OnStar Owner's Guide, or visit onstar.com for system information and details.

ENGINE	
Type	3.4L SFI V6
Horsepower	185 @ 5200 rpm
Torque	210 @ 4000 rpm
EPA estimated mpg, city/hwy	
— front-wheel drive	19/26
— all-wheel drive	18/24

Type (Ultra and CXL AWD only)	
3.6L VVT DOHC V6 [†]	
Horsepower (preliminary)	245 @ 6000 rpm
Torque (preliminary)	235 @ 3200 rpm
EPA estimated mpg, city/hwy	
— all-wheel drive (preliminary)	17/24

CAPACITIES	
Cargo volume (cu. ft.) [‡]	
— behind third-row seat/second-row seat	18.1/54.5
— second- and third-row seats removed	108.9
Fuel tank (approx. gal.)	18
Base curb weight (lbs.)	
— front-wheel drive	4,024
— all-wheel drive	4,250
Maximum trailer weight with available Trailer Towing Package (lbs.) ^{††}	3,500

[†]Cargo and load capacity limited by weight and distribution.
^{††}Maximum trailer weight ratings are calculated assuming a base vehicle, except for any options necessary to achieve the rating, plus driver. The weight of other optional equipment, passengers and cargo will reduce the maximum trailer weight your vehicle can tow. See your dealer for additional details.

DIMENSIONS (inches)	
Interior (front/second-/third-row seats)	
— Legroom	40.5/39.0/34.6
— Headroom	40.9/40.1/37.5
— Shoulder room	58.7/58.7/48.5
— Hip room	61.1/61.1/48.3

A NOTE ABOUT CHILD SAFETY. Always use safety belts and proper child restraints, even in vehicles equipped with air bags. Children are safer when properly secured in a rear seat. Never place a rear-facing infant restraint in the front seat of any vehicle equipped with an active air bag. See your vehicle Owner's Manual and child safety seat instructions for more information.

UPROMISE SAVE FOR COLLEGE
 GM is proud to be the only car company that can help you save for college with Upromise — for you, your children, your grandchildren, or any child you care about. GM has teamed up with Upromise, a free service that can help you turn your everyday spending into college savings. Once you join Upromise, every time you use your credit card, make a long distance phone call, shop online, buy gas, dine out — even buy an eligible new GM car or truck — you can get a portion of your purchase back for college. Learn more and join for free at upromise.com/gmcatalog.

ENHANCE YOUR OWNERSHIP EXPERIENCE. The Owner Center at My GMLink is a free online service that helps you make the most of your vehicle ownership.
 • Sign up for e-mail reminders about service visits
 • Keep an online history of services performed
 • Read your Owner's Manual, warranty, and more, online
 • Receive only the recall notices that apply to your vehicle
 • Watch do-it-yourself videos and much more
 Register today at MYGMLink.com!

Printed on recyclable paper from a renewable source.
 ©2003 GM Corp. All rights reserved. Regal, Ident. No. 04-RV-001
 Park Avenue, LeSabre, Century, Rendezvous and Buick are registered trademarks and Rainier is a trademark of GM Corp. OnStar and the OnStar emblem are registered trademarks of OnStar Corporation.
 Printed in U.S.A.
 425m

IMPORTANT WORDS ABOUT THIS BROCHURE.

We have tried to make this brochure comprehensive and factual. We reserve the right, however, to make changes at any time, without notice, in prices, colors, materials, equipment, specifications, models, and availability. Since some information may have been updated since the time of printing, please check with your Buick dealer for complete details. Buick reserves the right to lengthen or shorten the model year for any product for any reason, or to start and end model years at different times.

New Vehicle Limited Warranty. This warranty is for GM vehicles registered in the USA. See your Buick dealer for terms and conditions. Covered for 3 years/36,000 miles (whichever comes first): The complete vehicle • Tires • Towing to your nearest Buick dealership • Cosmetic corrosion resulting from defects • Repairs made to correct any vehicle defect • No charge for most warranty repairs Covered for 6 years/100,000 miles (whichever comes first): Rust-through corrosion

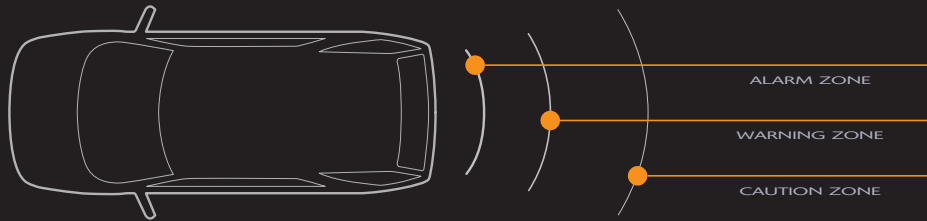
Corrosion Protection. Buick vehicles are designed and built to resist corrosion. All body and sheet metal components are warranted against rust-through corrosion for six years or 100,000 miles, whichever comes first. Application of additional rust-inhibiting materials is not required under the corrosion coverage and none is recommended. See your Buick dealer for terms of this limited warranty.

An Important Note About Alterations and Warranties. Installations or alterations to the original equipment vehicle (or chassis) as distributed by General Motors are not covered by the General Motors New Vehicle Limited Warranty. The special body company, assembler, equipment installer or upfitter is solely responsible for warranties on the body or equipment and any alterations (or any effect of the alterations) to any of the parts, components, systems or assemblies installed by GM. General Motors is not responsible for the safety or quality of design features, materials, or workmanship of any alterations by such suppliers.

Updated Service Information. Buick dealers receive useful service bulletins about Buick products. You may purchase them from Helm Incorporated by calling 1-800-551-4123 or by visiting www.helminc.com.

Assembly. Buick vehicles and their components are assembled or produced by different operating units of General Motors, its subsidiaries or suppliers to GM worldwide. We sometimes find it necessary to produce Buick vehicles with different or differently sourced components than originally scheduled. Since some options may be unavailable when your vehicle is assembled, we suggest that you verify that your vehicle includes the equipment you ordered or, if there are changes, that they are acceptable to you.

Engines. Buicks are equipped with engines produced by different operating units of GM, its subsidiaries or suppliers to GM worldwide.



ULTRASONIC REAR PARKING ASSIST Nuclear submarine technology surfaces in your driveway. When you shift into reverse gear, sonar waves are sent out from four ultrasonic transmitter/receivers built into the rear bumper. If a parked vehicle, or any stationary object at least ten inches high, is detected in your intended path, the sonar waves will bounce off the obstacle and back to the sensors in the bumper. The sensors will activate both an audio warning signal and warning lights if you are nearing an obstacle while backing up at low speed. The closer you get, the more intrusive the alarms and lights become.

TIRE INFLATION MONITOR It's a simple matter of physics – an underinflated tire has a smaller diameter than a properly inflated tire – and, to cover the same distance, a tire with a smaller diameter will have to rotate faster than a tire with a larger diameter. Rendezvous has sensors that constantly measure the speed at which each tire and wheel are turning, and report that information to the engine control module computer. It compares that data and can quickly tell when one tire is turning significantly faster than the others. Then a “low tire” message appears in the Driver Information Center, and you know you have a tire that needs attention. Simple physics in service of safer driving.



WHEEL-SPEED COMPARISON



THIRD-ROW LEGROOM IN RENDEZVOUS



THIRD-ROW LEGROOM IN MANY OTHER VEHICLES



Features described are available on some models. Refer to specifications in the back for availability.



EYECUE® HEAD-UP DISPLAY First devised to project vital data onto the windscreens of supersonic jet fighters, head-up displays can help drivers get important information while they keep their eyes on the road. Rendezvous' advanced system uses a dot matrix liquid-crystal display (LCD) to exhibit information in green against a black field. It uses small pixels to create both alphanumeric messages and graphic symbols. The array is 28 pixels high by 90 pixels wide and the image is projected in front of the driver, so the driver doesn't have to shift focus away from the road to gather information. Items displayed include speed, turn signal, check gauges, high beam and low fuel indicators. Both image brightness and height are driver-adjustable for optimum visibility.

THIRD-ROW LEGROOM All-wheel drive and an independent rear suspension often take up so much space that the rear floor of the vehicle has to be raised to accommodate them, sacrificing third-row legroom. But not with Rendezvous. Its unitized body construction leaves extra room for the independent rear suspension. Plus, its innovative all-wheel drive system was designed from the outset to be compact, so it conveniently fits under a flat rear-load floor with no sacrifice of cargo room or third-row legroom.

PRESSURE-SENSITIVE TOUCH PAD LIFTGATE In addition to triggering it from the keyless remote, Rendezvous' rear liftgate can open in an unusual and tactilely satisfying way. On the liftgate, Rendezvous has a pressure-sensitive touch pad. When the pad detects the gentle pressure of your fingertips, it sends an electronic signal which causes the liftgate to unlatch. Think of it, a vehicle that has gone through sensitivity training.

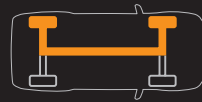
Features described are available on some models. Refer to specifications in the back for availability.



ON-DEMAND ALL-WHEEL DRIVE Developed by American and European driveline specialists especially for Rendezvous, this technologically innovative all-wheel drive system uses front-wheel drive for ordinary driving conditions. But when Rendezvous starts to encounter slippery road surfaces, the system automatically adds power to the rear wheels without perceptively affecting comfort or handling.

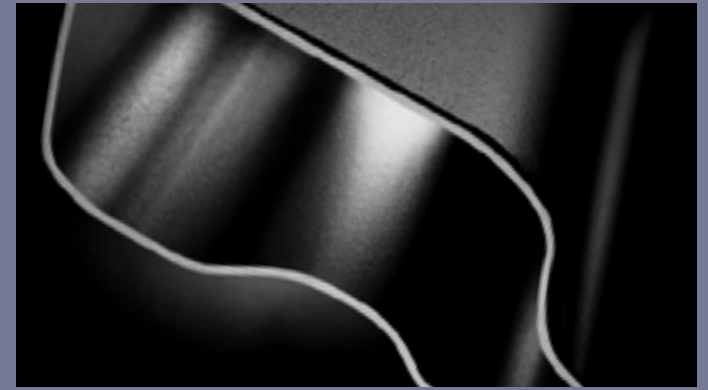
The Rendezvous all-wheel drive system begins with a power take-off (PTO) unit mated to the front-mounted transaxle. An aluminum driveshaft links the PTO with a rear-drive module. Inside the rear module, twin pumps react to any difference in the rotational speed of the front and rear wheels. If one of the front wheels begins to slip, the rear-mounted gerotor units pressurize fluid to engage clutches that redirect torque to one or both rear wheels. This helps the rear wheels to smoothly and seamlessly provide traction, which allows Rendezvous to keep moving despite muddy, snowy or slippery road surfaces.

Even if both front wheels and one rear wheel are slipping, power can be directed to the other rear wheel. And when the system detects that the front wheels have regained good traction, it moves back into its front-wheel drive mode. Importantly, all of this technological wizardry happens automatically, without any need for the driver to even have to think about pulling a lever or pushing a button. And it all happens so smoothly and progressively that it's nearly indiscernible to the driver and passengers.



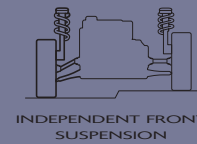
ALL-WHEEL DRIVE

Features described are available on some models. Refer to specifications in the back for availability.



INDEPENDENT FRONT SUSPENSION/HYDROFORMED ENGINE CRADLE

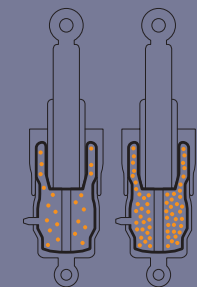
Rendezvous' front suspension is specifically engineered to optimize handling and stability, while at the same time delivering the ride characteristics of a comfortable sedan. Proven MacPherson strut technology is coupled with four-stage damper valving for handling and control. The front lower control arms and hydroformed engine cradle provide strength to help absorb road inputs, providing a smooth ride and precise handling. Hydroforming uses the power of pressurized fluid sealed in a hollow round cradle rail to help precisely form the shape of the cradle for consistent steel wall thickness and dimensional control.



INDEPENDENT FRONT SUSPENSION

INDEPENDENT REAR SUSPENSION/AUTOMATIC REAR-LEVEL CONTROL

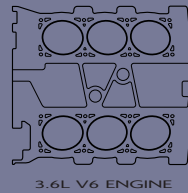
Rendezvous' rear suspension is fully independent. It employs a short and long arm design with unequal-length control arms and a toe-control link. The upper and lower control arms, knuckles and crossmembers are fabricated from aluminum to help maximize strength while minimizing mass. Premium monotube shock absorbers help provide excellent wheel control and road isolation compared to a twin-tube design. Plus, the rear suspension is isolated from the body to reduce the road noise and smooth the ride. The automatic rear-level control system, included in the trailering package, is designed to help improve ride and handling while carrying loads. It works by adding an air bladder around each rear shock absorber which is inflated by an on-board compressor. It automatically helps level the rear of the vehicle when heavy loads are carried or a trailer is connected.



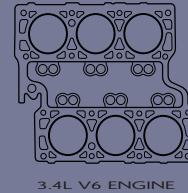
REAR-LEVEL CONTROL

Features described are available on some models. Refer to specifications in the back for availability.

3.6L V6 VVT ENGINE In 1999, GM embarked on an ambitious program to create, from a clean sheet of paper, a new family of sophisticated V6 engines for global application in premium and high-performance vehicles. The 2004 3.6L is the first version of this new V6 family to go into production. It is GM's most advanced engine, and the Buick Rendezvous is the first front-wheel drive architecture in the world to have it under the hood (available January 2004). Some of the world-class features of this all-aluminum engine include:



3.6L V6 ENGINE

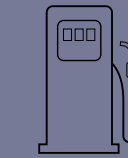


3.4L V6 ENGINE

3.4L V6 ENGINE Rendezvous CX and CXL models are powered by the LA1 3400 V6 engine, which has a well-earned history of providing smooth, reliable power. It employs an overhead valve design for maximum simplicity and reliability. Roller hydraulic lifters and rocker arms minimize running friction. Durable forged-steel connecting rods ride on a cast nodular crankshaft supported by four main bearings. The cylinder block is an iron casting topped with lightweight aluminum heads. A cast aluminum oil pan helps contain noise by stiffening lower portions of the engine assembly. The platinum-tipped spark plugs have a normal service life of up to 100,000 miles. No tune-up is necessary for any other part of the ignition system. The engine coolant lasts up to 150,000 miles in normal service. This is a reliable, low-maintenance engine that develops 185 hp and 210 lb-ft of torque, yet still earns EPA estimated fuel economy ratings of 19 city/26 highway in its front-wheel drive configuration and 18 city/24 highway in its all-wheel drive configuration.

VARIABLE VALVE TIMING FOR INTAKE AND EXHAUST VALVES

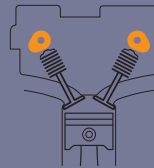
The use of fully variable valve timing (VVT) for both intake and exhaust, a first for any GM engine, provides outstanding fuel economy and emissions reduction. It also gives this engine extreme flexibility. 90% of its peak torque is available across a broad operating range: 1,600 – 5,800 rpm. Its horsepower and torque are equally impressive: 245 hp, 235 lb-ft torque (preliminary figures).



FUEL EFFICIENT

DUAL OVERHEAD CAMSHAFTS WITH FOUR VALVES PER CYLINDER

The more intake and exhaust valves an engine has, the easier it can breathe. That is to say, the easier it can draw the fuel/air mixture into the combustion chambers, and the easier it can expel the spent gases of combustion. With dual overhead cams controlling four valves per cylinder, this engine breathes very well indeed. All of which results in better efficiency, better economy, and more power.



DUAL OVERHEAD CAMS

Maintenance needs vary with different uses and driving conditions. See the Owner's Manual for more information.

3,500-LB. TOWING CAPABILITY

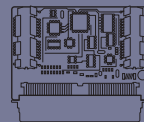
Rendezvous has the power to tow up to 3,500 lbs. with its optional towing package, which includes the automatic rear-level control system.

Maximum trailer weight ratings are calculated assuming a base vehicle, except for any options necessary to achieve the rating, plus driver. The weight of other optional equipment, passengers and cargo will reduce the maximum trailer weight your vehicle can tow. See your dealer for additional details.

EPA estimated mpg 17 city/24 highway (preliminary figures).

ELECTRONIC THROTTLE CONTROL

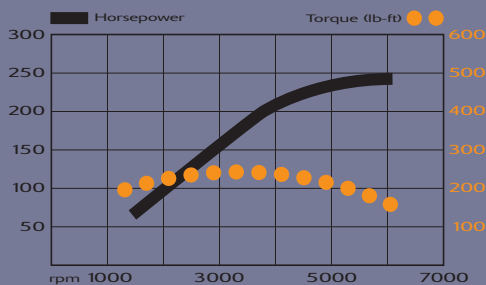
Often seen on premium automobiles, electronic drive-by-wire throttle control is the stuff of the future. There is no cable link between the accelerator and the engine. A sensor at the gas pedal measures pedal angle and sends a signal to the engine control computers to open the throttle at the correct rate. The result is quick, precise throttle response and improved reliability.



ELECTRONIC THROTTLE CONTROL

ADAPTIVE LEARNING 4-SPEED TRANSMISSION

Rendezvous' advanced 4T65-E transaxle is a smooth-shifting, quiet-running transmission. The torque converter and shift quality are electronically managed. The transmission has also been designed and programmed with an adaptive capability that allows it to automatically correct for changing conditions during its lifespan, so it continues to maintain optimum shift feel.



3.6L V6

Features described are available on some models. Refer to specifications in the back for availability.

Features described are available on some models. Refer to specifications in the back for availability.





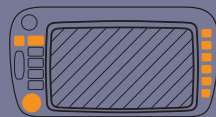
ONSTAR® A pioneering technology in the area of advanced in-vehicle safety and security, OnStar uses global positioning satellites to locate a vehicle, and a hands-free wireless phone to provide a communications link and seamless integration into Rendezvous' electrical system. Professionally trained OnStar Advisors can provide a number of safety, security and convenience services twenty-four hours a day, every day of the year. These services can include directing emergency service providers to your exact location if you require help when your air bags have been activated, sending a signal to your Rendezvous to unlock your doors if you lock your keys inside, directing roadside assistance to you should your car become disabled or run out of gas, honking your car's horn and flashing its lights to help you find your car in a crowded shopping mall parking lot and assisting police in locating and tracking your vehicle if it's been stolen.

OnStar services require vehicle electrical system and analog wireless service to be available and operating for features to function properly. OnStar uses existing emergency service providers as well as analog wireless and satellite technologies and is subject to their limitations. Visit onstar.com for system information and details.

GPS/DVD NAVIGATION SYSTEM Imagine your Rendezvous reading the signals coming from at least three global positioning satellites in high earth orbit, and using those signals to compute your exact position on the planet, give or take a few feet. Now imagine that data being fed into a sophisticated DVD-based navigation program that can show you exactly where you are on a virtual map sent to a screen on the instrument panel, and allow you to watch your position on the map move as you move down the road. That's what Rendezvous' GPS/DVD navigation program can do. Its database also contains information that allows the system to suggest best routes to your destination, as well as the locations of gas stations, restaurants and points of interest along the way.

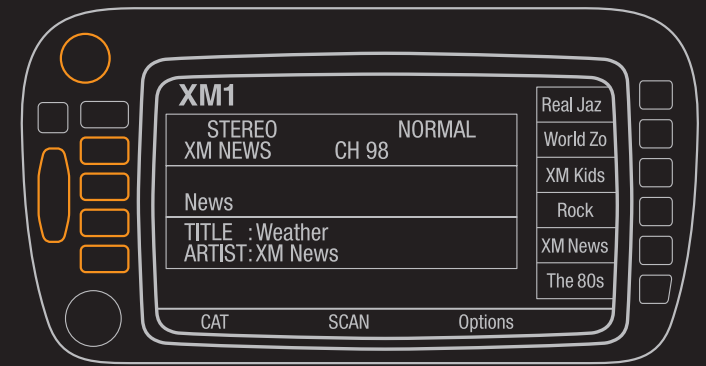


ONSTAR



GPS/DVD NAVIGATION SYSTEM

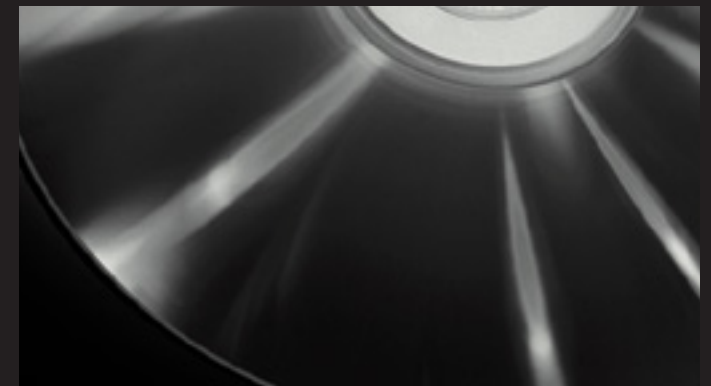
Features described are available on some models. Refer to specifications in the back for availability.



XM® SATELLITE RADIO Two satellites (one named "Rock," the other "Roll") hover in geosynchronous earth orbit, beaming down CD-quality digital sound into your Rendezvous. Terrestrial repeaters, perched atop skyscrapers and at tunnels, fill in the signal whenever the line of sight with a satellite is lost. The digital signal delivers 100 different music/news/sports/talk/comedy formats. And you can receive the signal in all 48 coast-to-coast states. That's the attraction of XM. And that's why it's available on Rendezvous.

Activation and service fees extra. Visit gm.xmradio.com for details.

DVD ENTERTAINMENT SYSTEM This DVD entertainment system has the capability of playing studio quality audio/video in both CD-audio and DVD formats. There's a flip-down seven-inch screen utilizing a color active-matrix liquid-crystal display; two wireless infrared headphones and an infrared remote control for rear-seat activation; video and audio jacks for camcorder playback; ports for complete gaming capability; and even a parental switch on the front of the unit for stopping play and muting sound. Use it occasionally just to make sure the kids are still capable of human conversation.



Features described are available on some models. Refer to specifications in the back for availability.