

Whatever  
you want in a  
luxury car,  
Cadillac has it.



# In kinds of cars.



With ten basic models, the first luxury of Cadillac is the luxury of choice. International size luxury in Seville by Cadillac. Personal size luxury in Eldorado Coupe and Eldorado Convertible (the last convertible to be built in America). Family size luxury in Sedan deVille, Coupe deVille, Calais Sedan and Calais Coupe. And executive size luxury in Fleetwood Brougham, Cadillac Limousine and Nine-Passenger Sedan. Plus exciting new Special Editions.

Coupe deVille in Calumet Cream with an available White Cabriolet top.



Seville by Cadillac in White with a matching padded vinyl roof.



Eldorado Convertible in available Crystal Blue Firemist with Antique Light Blue Leather interior.

# In luxury.



New contoured Pillow Seat on d'Elegance Special Editions.



One of 11 available leather trim combinations.

Cadillac for '76. You don't pamper it. It pampers you. Whatever size... whatever model you choose. Because every Cadillac comes equipped with Cadillac comfort, convenience and luxury. If anything, carried to a new level of sophistication in 1976 by a number of refinements. Seen and unseen. From a new available feature that automatically locks doors when the shift lever is moved to one of the forward drive positions... to a Freedom™ Battery that never needs water.

Wherever you look in Cadillac 1976, there is evidence of changes and refinements that enhance customer value.

And there is luxury. Everywhere. As Cadillac's tradition of interior innovation lives on with one of our widest selections ever. New colors. New fabrics. And new trims. Such as our new "tailored look" in the Fleetwood Brougham.

Of course, the ultimate in luxury of choice is offered by Cadillac's Special Edition cars:

Fleetwood Talisman... trimmed in Medici crushed velour.

Brougham d'Elegance... with Cadillac Contoured Pillow Seats, a new concept in seating luxury.

deVille d'Elegance... also with Contoured Pillow Seating.

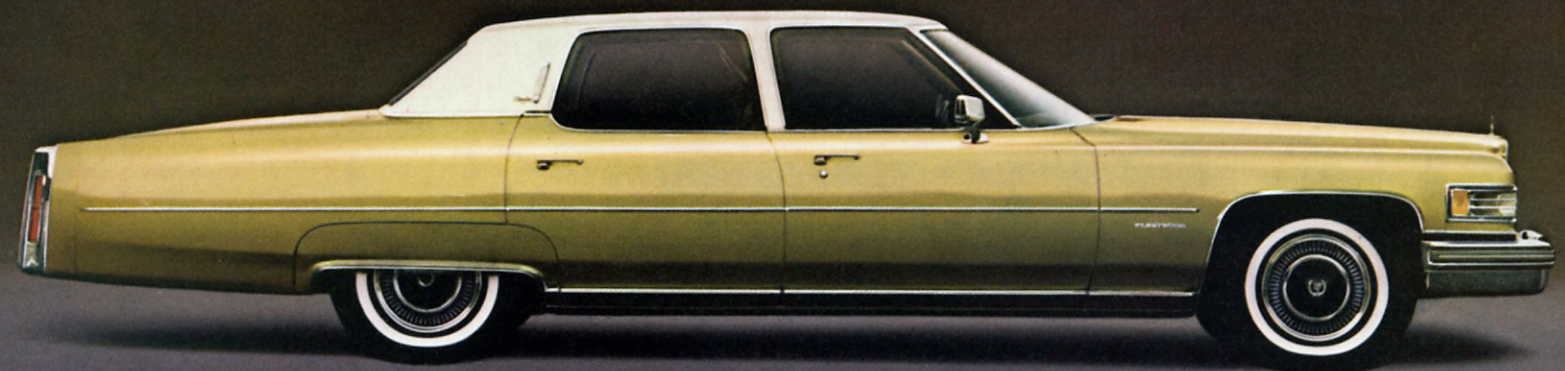
Cabriolet... a dramatic exterior touch for Coupes.

All this... plus Cadillac quiet and ride. That's luxury.



New tailored look for the Fleetwood Brougham.

The Fleetwood Brougham in Florentine Gold Firemist with padded White vinyl roof and Turbine Vaned wheel discs.



# In engineering advancements.

Of course, one of the most exciting advancements in years involves Cadillac's Electronic-Fuel-Injected Engines. Available on all models



except the Cadillac Limousine and Nine-Passenger Sedan (a 5.7 Litre, EFI Engine is standard on Seville), they are designed to provide efficiency over a wide variety of driving conditions and driver habits. With quick response. Fast starting. Consistent performance. Smooth engine idle. And few required maintenance operations.

Seville by Cadillac in Florentine Gold Firemist with an Ivory padded vinyl roof.

Calais Coupe in Dunbarton Green with an available White vinyl roof and Calais Sedan in Academy Gray.



# In standard features.

## Seville

Automatic Climate Control.  
AM/FM Signal-Seeking Stereo Radio.  
Fuel Monitor.  
Electronic-Fuel-Injected, 5.7 Litre Engine.  
Automatic Level Control.  
Power Door Locks.  
Cornering Lights.  
Variable Ratio Power Steering.  
Six-way power seat adjuster for driver and a two-way power seat adjuster and manual seat back recliner for passenger.  
Padded Vinyl Roof.  
Steel-Belted Radial Tires.  
Tilt and Telescope Steering Wheel.  
Controlled Cycle Wiper System.  
Lamp Monitors.

## As well as . . .

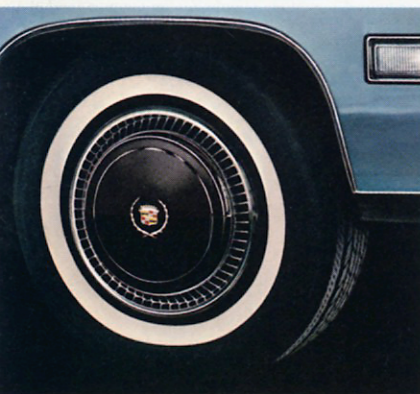
Remote Control Left-Side and Right-Side Exterior Rearview Mirrors • Remote Control Trunk Lock Release • Dual Mode Horn • Individual Front Armrests • One-Piece Deep Pile Carpeting • Individual Rear Seat Interior Reading Lamps • Inside Hood Lock Release • Color-Keyed Litter Container • Quartz Digital Clock • Power Windows • Soft Ray Glass • Stowaway Spare Tire • Color-Coordinated Spare Tire Cover and Trunk Carpeting, including Deck Lid • Accent Paint Striping • Assist Straps on Back of Front Seats as well as Overhead Type • Pull Type Handle on Each Door • Automatic Storing of Safety Belts • Bumper Impact Strips • Dome Courtesy and Reading Lamp • Cigar Lighters • Turbo Hydra-Matic Transmission • High Energy Ignition • Automatic Parking Brake Release

## Cadillac and Eldorado

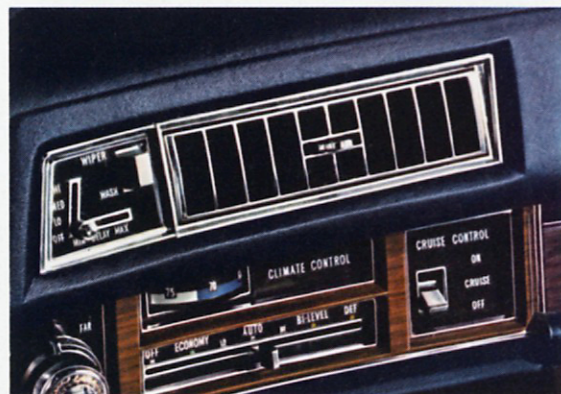
Space-Age Instrument Panel.  
Automatic Climate Control—"Economy" setting for improved efficiency.  
High Energy Ignition System.  
Power Door Locks and Power Windows.  
AM/FM Radio with Automatic Power Antenna—Standard on DeVilles, Calais, Limousine and Nine-Passenger Sedan.  
AM/FM Signal-Seeking Stereo Radio with Power Antenna—Standard on Fleetwood Brougham and Eldorado.  
Lamp Monitors.  
Six-Way Power Seat Adjuster—Except Calais, Limousine and Nine-Passenger Sedan.  
Dual Comfort Seats—60/40 version standard on Fleetwood Brougham; available on DeVilles. (Recliner is not available with 60/40.) Available for the passenger's side is a power reclining seat with a six-way power adjuster.  
Steel-Belted Radial Tires.  
Driver and Front Passenger Reading Lights—Standard on Fleetwood Brougham.  
Soft Ray Glass—All models.  
Variable Ratio Power Steering—Not on Limousine and Nine-Passenger Sedan.  
Three-Speed Wipers and Washers.  
Automatic Parking Brake Release.  
Quartz Digital Clock.  
Automatic Level Control—All models except DeVilles and Calais.  
Hinged Door Pull Handles—All models except Calais.  
Remote Control Left-Side Mirror—All models. On Limousine and Nine-Passenger Sedan, right-side mirror is standard as well.  
Litter Container.  
Dual Master Cylinder Brake System with Disc Brakes in Front—Four-wheel disc brakes on Eldorado.

## As well as . . .

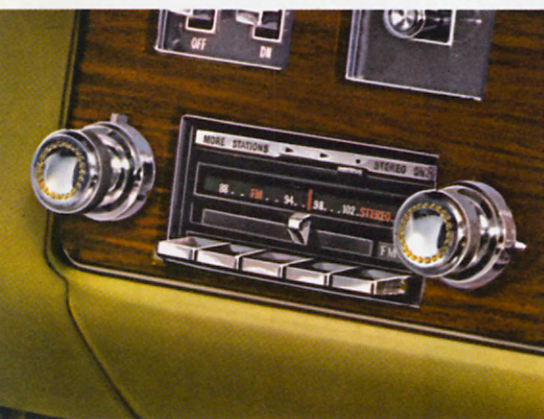
Center Armrests • Turbo Hydra-Matic Transmission • Visor Vanity Mirror • Cigar Lighters • High Energy Ignition



Steel-Belted Radial Tires.



Automatic Climate Control.



AM/FM Signal-Seeking Stereo Radio (Standard on Seville, Fleetwood Brougham and Eldorado).



Lamp Monitors and Cornering Lights.

Sedan deVille. Foreground in Chesterfield Brown. Background in Claret with a White padded vinyl roof.



# In features you may add.

## Cadillac and Eldorado

Electronic-Fuel-Injected Engine—Except Limousine and Nine-Passenger Sedan.

Weather Band Radio—AM/FM Signal-Seeking Stereo Radio with a 24-hour weather band.

Automatic Door Lock System—Locks all doors automatically when the shift lever is moved to a forward drive position.

Astrorooft—All models except Convertible, Limousine and Nine-Passenger Sedan.

Sunroof—Electrically powered panel is not translucent.

Theft-Deterrent System.

Illuminated Entry System.

Illuminated Vanity Mirror.  
Fuel Monitor System.

Stereo with Tape Player.

Power Recliner Seats—Available for passenger seat on all models with 50/50 Dual Comfort front seats. Power recliner for passenger seat is included as part of the Fleetwood Talisman.

Opera Lamps—Available on Fleetwood Brougham, Limousine, Nine-Passenger Sedan, Coupe DeVille and Calais Coupe. Standard on DeVille d'Elegance.

Wheel Discs—Available are wire wheel discs as shown. Also a new disc with a black hub and an argent and chrome turbine vaned wheel disc. (Except Eldorado.)

Cruise Control.

Guide-Matic Headlamp Control.

Electric Rear Window Defogger—Except Limousine and Nine-Passenger Sedan.

Air Cushion Restraint System—Not available on Convertible, Limousine and Nine-Passenger Sedan.

Manual Recliner—For driver seat on all models with 50/50 Dual Comfort seats.

Track Master Skid-Control—Except Eldorado.

Twilight Sentinel.

Controlled Cycle Wipers.

Trailer Package—For towing up to 6,000 lbs. (Except Limousine and Nine-Passenger Sedan.)

Controlled Differential—Directs power to the rear wheel having better traction. (Except Eldorado.)

Automatic Level Control—Calais and DeVille series.

Remote Control Trunk Lock & Electric Pulldown.

Tilt and Telescope Steering Wheel.

Leather Interiors—Standard on Convertible.

Remote Control Right-Side Mirror—Standard on Limousine and Nine-Passenger Sedan.

Outside Thermometer.

Firemist Paints.

Carpeted Floor Mats.

## Seville

Astrorooft.

Sunroof.

Illuminated Vanity Mirror.

Illuminated Entry System.

Turbine Vaned or Wire Wheel Discs.

Cruise Control.

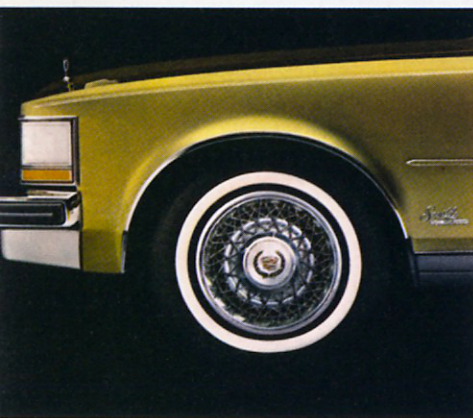
Theft-Deterrent System.

### Also available:

AM/FM Stereo Radio with Integral 8-Track Tape Player • Controlled Differential • Door Edge Guards • Firemist Paint • Carpeted Floor Mats • Guide-Matic Headlamp Control • Twilight Sentinel • Heavy-Duty Cooling System • Leather Upholstery • License Frames • Electric Rear Window Defogger • Trunk Mat • Performance Axle • Trailer Package • Automatic Door Locks • 6-Way Passenger Power Seat Adjuster • Power Recliner Passenger Seat • Manual Recliner Driver Seat • Accessory Engine Block Heater (dealer installed) • Rear Shoulder Belts (dealer installed)



Astrorooft from the outside in... and from the inside out.



Wire Wheel Discs.



Power Recliner Seat.



Eldorado Coupe in Georgian Silver with available Silver Cabriolet vinyl roof.



*Cadillac* An American tradition of excellence since 1902.



Cadillac Motor Car Division of General Motors Corporation reserves the right to make changes at any time, without notice, in prices, colors, materials, equipment, specifications and models and also to discontinue models. Some of the features and accessories shown on cars are available at extra cost.