



1994 CADILLAC

DEVILLE CONCOURS

DEVILLE

FLEETWOOD

SEVILLE STS

SEVILLE SLS

ELDORADO TOURING COUPE

ELDORADO

TABLE OF CONTENTS

Cadillac 1994	2-3
Performance	4-5
Safety	6-9
Ownership	10-11
DeVille Concours	12-27
DeVille	28-41
Fleetwood	42-53
Seville STS	54-57
Seville SLS	58-63
Eldorado Touring Coupe	64-67
Eldorado	68-73
Sound Systems	74
Exterior Colors	<i>Inside back cover</i>



C R E A T I N G A H I G H E R S T A N D A R D

CADILLAC is creating a higher standard. A higher standard of automotive excellence. One that elevates your concept of a luxury automobile.

A standard that promises energetic performance and sophisticated safety in harmony with even greater Cadillac comfort and unparalleled owner care.



2 CADILLAC 1994

The 1994 Cadillacs create a higher standard of performance, comfort, safety and Cadillac Owner Privileges—the industry's benchmark for outstanding owner care.

The brand-new DeVille Concours.

An all-new class of six-passenger luxury automobile. One with an advanced 270-hp Northstar System, with perforated leather seating areas, Zebrano wood trim and many other amenities, all standard. One that creates a higher standard.

The all-new DeVille. A completely redesigned six-passenger automobile, with a refined 4.9 liter V8. Enjoy added confidence and control with new four-wheel anti-lock disc brakes, plus Speed-Sensitive Suspension and Speed-Sensitive Steering. DeVille takes full-size luxury to a higher standard.

Fleetwood and Fleetwood

Brougham. The Fleetwoods create a higher standard in full-size luxury automobiles. They provide additional

protection for up to three front seat passengers with dual air bags.* A new 260-hp, 5.7 liter V8 linked to an electronically controlled transmission results in even more responsive acceleration.

Seville SLS and Seville STS. Seville SLS is powered by a new, standard, 270-hp Northstar System V8. Seville STS is a world-class expression of Cadillac, sporting the 295-hp Northstar System V8.

Eldorado and Eldorado Touring Coupe. The new, standard, 270-hp Northstar System adds extra sportiness to the Eldorado driving experience. Eldorado Touring Coupe continues to lead with its big strength: the 295-hp Northstar System V8, plus an interior with gathered-leather seating areas and virtually every driver amenity and comfort.

*Always wear safety belts, even with air bags.





The response, the confidence, the performance. Northstar System elements working together to help enhance driver control.

Cadillac creates a higher standard of contemporary performance.

Exemplified by robust V8s with dual-platinum-tipped spark plugs that aren't scheduled for replacement until 100,000 miles.

Every front-drive Cadillac offers a suspension that adapts to changing road conditions to enhance your feeling of control.

In Cadillacs with the Northstar System, adaptive suspension reaches its apex—with real-time Road-Sensing Suspension that reads every inch of the road at 60 mph, constantly adapting for your comfort and helping enhance your driving control. Cadillac offers two Northstar System V8s. One, with 270 hp in Eldorado, Seville SLS and new DeVille Concours.

The other, a 295-hp high-output V8, to empower Seville STS and Eldorado Touring Coupe.

In turn, the 1994 Cadillac Fleetwood rewards you with a new 5.7 liter V8 that generates 260 horsepower and, with 335 lbs-ft of torque, produces prodigious highway passing and the ability to tow large trailers and boats.

Refined for 1994, DeVille's 200-hp 4.9 liter V8 is cradled on new engine mounts to improve idle smoothness, and further quieted by a new exhaust balance passage. And its new, large 20-gallon fuel tank and increased highway efficiency—EPA estimated 26 mpg hwy—extends highway range to 520 miles*.

*Obtained by multiplying highway mpg by fuel tank capacity. See model section for feature availability.

P E R F O R M A N C E

In only a few short seconds, the 1994 Cadillacs take everything you thought about Cadillac performance and blow it all away.



The Northstar System is so advanced it allows a driver to travel 100,000 miles, approximately four times around the world, before the first scheduled tune-up.



The heart of the Northstar System: a 32-valve V8. It works in concert with real-time Road-Sensing Suspension, responsive Speed-Sensitive Steering and full-range Traction Control to help enhance your driving control.

Cadillac's commitment to defensive safety advances the state of the art. Every 1994 Cadillac employs both driver and front passenger air bags.* Every 1994 Cadillac exceeds 1997 model federal dynamic side-impact standards. Every Cadillac helps protect with steel safety cage, energy-absorbing crush zones, child security features and passenger safety belts that properly secure child safety seats. Cadillac again redefines the state of the art with an Airbank System: air bags* that provide supplemental protection for all three front seat passengers in the new DeVille and DeVille Concours. Fleetwood's front air bags offer additional front protection for up to three front seat occupants as well. Stringent air bag testing for all Cadillacs goes well beyond federal test requirements. Cadillac's air bag designs have been subjected to nearly 100 different crash and driving conditions.



All rear passenger safety belts in every Cadillac accommodate child safety seats.

Energy-absorbing crush zones - front and rear - sacrifice themselves in a collision.

Cross-car beams in the instrument panel, floor and rear compartment help resist side-impact collisions.

Mud- and snow-rated tires offer exceptional performance and added traction in inclement weather.

High-strength steel safety cage surrounds and helps protect passenger compartment.

Door latches and hinges exceed federal standards.

Even the tiny sensor contacts necessary to complete an electrical circuit to deploy the air bags, if ever needed, are flashed with gold to enhance durability. And the air bags contain self-diagnostics

that require no annual inspection. Cadillac's dedication to safety is the outgrowth of the longest established automotive safety program in the world.

*Always wear safety belts, even with air bags.



DeVile's Airbank System - standard driver and passenger air bags* which provide supplemental protection for all three front seat passengers.

Laminated high-penetration-resistant windshield helps prevent occupant injuries and ejection during a crash.

Strategically placed air bag sensors trigger inflation above predetermined speeds.

Air bag sensors, with gold contacts, improve reliability. Diagnostic Energy Reserve Module monitors readiness of the air bags and serves as a backup battery.

Powertrain design helps rotate engine downward during frontal collision to help protect front seat occupants.

Side vehicle structure enables all 1994 Cadillacs to exceed federal side-impact standards of the 1997 model year.

Energy-absorbing steering system is designed to absorb impact energy.

Driver and passenger air bags standard - all Cadillacs

Gold-plated air bag sensor contacts

Exceeds 1997 model federal side-impact standards

Steel safety cage

Front and rear crush zones

Mini-wedge door latch and striker

Rear-door child security locks

Cadillac, a pioneer in active safety systems, advances the state of the art. A robust V8 gives you deep reserves of power to pass and merge. Suspensions that think contribute to your maintaining control. Every front-drive Cadillac aids your driving confidence with suspensions that, in many models, react to actual road conditions, or to driving speed.

If you have to stop suddenly, Cadillac's standard anti-lock braking (ABS) automatically allows you to steer and enhances braking capability.

The inclemencies that hamper braking also hamper traction. Full-range Traction

Control uses anti-lock braking technology to help prevent wheel spin. It is available on DeVille and standard on all other 1994 Cadillacs.

At night, the Panoramic Illumination headlamp system uses over 500 meticulously calibrated lens facets to focus light precisely where it's needed most, going well beyond governmental regulation to create a level of safety that is very easy to see.

*See Owner's Manual for child seat usage.

See model section for feature availability.

V8 power

ABS

Full-range Traction Control

Brake/transmission shift interlock

Cornering lamps

Lap/shoulder belts at all outboard seats

Front safety belts "intentional air" comfort feature

All passenger safety belts accommodate a child safety seat*



Cornering lamps, standard on all 1994 Cadillacs, illuminate the direction of your turn and add the power-ful, white, focused light from the headlamps.

Faster than you can snap your fingers, Full-range Traction Control and anti-lock braking help you maintain traction, braking and steering control on a variety of road surfaces or under most weather conditions.

In less than half a second, advanced electronics silently dim the Electrochromic inside and outside driver mirrors in response to headlamps behind you.



Cadillac Owner Privileges. Cadillac creates a higher standard with its unmatched pledge to make you the most cared-for owner in the world.



Remote keyless entry, available on Fleetwood, standard on all other 1994 Cadillacs, enhances your safety and convenience. Pressing a button lights the inside of your car, locks and unlocks the doors, or opens the luggage compartment from up to 15 feet away.

Cadillac Roadside Service. The finest program of its kind, and at the heart of Cadillac Owner Privileges. Assistance is just a toll-free phone call away 24 hours a day, 365 days a year—regardless of the model year of your Cadillac. Your call is answered by a Cadillac-trained advisor who, in many cases, can quickly help resolve your car's problem over the phone. If necessary, a Cadillac technician with a specially equipped vehicle, stocked with genuine GM parts, comes to your aid when you need it the most: nights, weekends and holidays. The driver will even take you to your home,

a hotel or another local destination if more extensive service is required.

24-Hour Consumer

Relations Hotline. As a Cadillac owner, should you need to ask any questions, make a comment, or request additional information, the exclusive Cadillac Consumer Relations Center is staffed 24 hours a day, 365 days a year, by Cadillac professionals.

Cadillac emergency road service is there when you need it.



No-charge emergency road service. Cadillac Owner Privileges also include emergency road service for 48 months/50,000 miles—wherever you travel in the U.S. and Canada. Whether you have a flat tire, are locked out,

need a battery jump start, or simply run out of fuel, you can receive assistance at no charge.

Trip-interruption protection. In addition, Cadillac safeguards your travel with a trip-interruption



allowance to reimburse you for hotel, food, even alternate transportation necessitated by a covered repair. Best

On-the-spot assistance from more participating dealers than any other roadside assistance program. of all, this coverage remains in effect for 1994 Cadillac owners for 48 months/50,000 miles.

Trip routing service. Cadillac will

help make your travel easier by providing you with suggested route information for your next trip out of town. This



"We were leaving the Grand Canyon at approximately 7:30 a.m. when we hit a low curb near the exit by the ranger station, wrecking the right front tire and wheel on our new Eldorado. Cadillac made arrangements for a new wheel and tire to be shipped to us. We went on to have an enjoyable trip in our beautiful car."

personalized service includes a travel log and road atlas.

Among the best warranty protection in the industry. The Cadillac Gold Key Bumper to Bumper Warranty safeguards your investment for 4 years/50,000 miles. There is no deductible.



"It was an emergency. My three-year-old accidentally locked my fifteen-month-old baby in the car. The Cadillac Dealer Service technician was here in only minutes."

The body of every Cadillac is warranted for rust-through protection for 6 years/100,000 miles.

Never without transportation. As a Cadillac driver, if your Cadillac requires same-day service, your dealer will furnish shuttle service. Should your Cadillac require overnight warranted repair, your dealer will provide you



"I had guests to drive to a holiday party. I called Cadillac Roadside Service. They were fantastic. The Cadillac technician came to my house within 20 minutes in the pouring rain and fixed my car."

with a loaner car if one is available, or reimburse you for rental or transportation expense?

A personal invitation. With the Cadillac Gold Key Delivery System, your Cadillac dealer representative will present you with a premium package of ownership materials and introduce you to key dealership personnel.

"These services are available to all 1994 model owners at no charge. They are also available to owners of prior years' models; however, service fees may apply. Please ask your dealer for complete program details."

*24-hour Cadillac Roadside Service
Trip-interruption protection
Emergency road service
Trip routing service
24-hour Consumer Relations Hotline
Gold Key Delivery System
Courtesy transportation*

The GM Gold Card™

The world's only credit card that lets you earn up to \$1,000 a year toward the purchase of any new Cadillac. Plus all the benefits of a GM Gold MasterCard!

SMARTLEASE
by GMAC

All the benefits of leasing including capital conservation. Terms arranged in the showroom to suit you. Choose your monthly payment date.

GM Protection Plan

The only service contract for new Cadillacs backed by General Motors.

Protects beyond the 4-year/50,000-mile Gold Key Bumper to Bumper warranty.

THE 1994 DEVILLE CONCOURS. For centuries, the North

Star has guided man's travels. Now it is guiding an entirely new class of

automotive travel on the American road that creates a higher standard.

So refined, it indulges six passengers with perforated, hand-fitted leather

seating areas and surrounds them with genuine Zebrawood trim. So

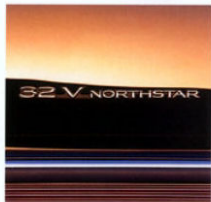
comfortable, it supports driver and front passenger with new Suspension

Seating, which should help them remain refreshed mile after mile.

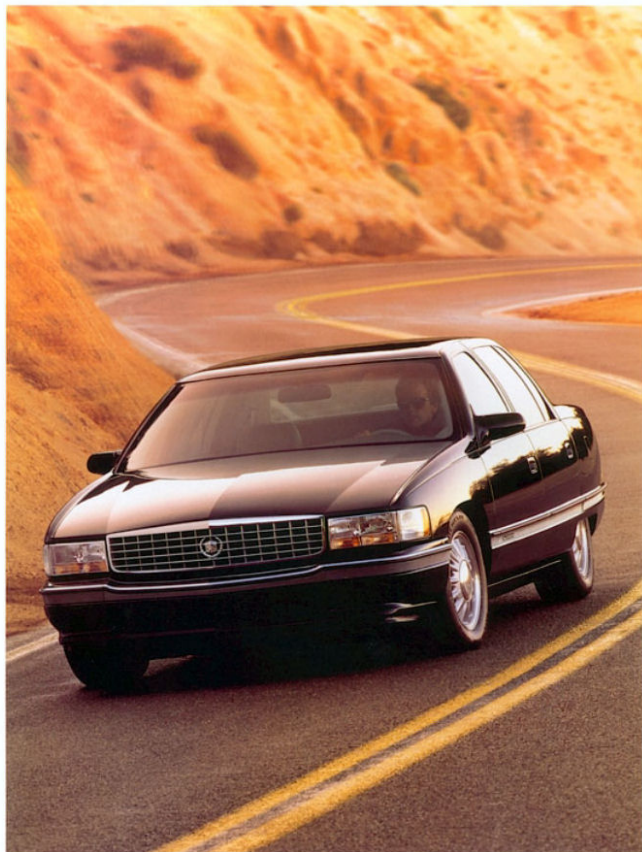
So responsive, its advanced Northstar System V8 makes passing and

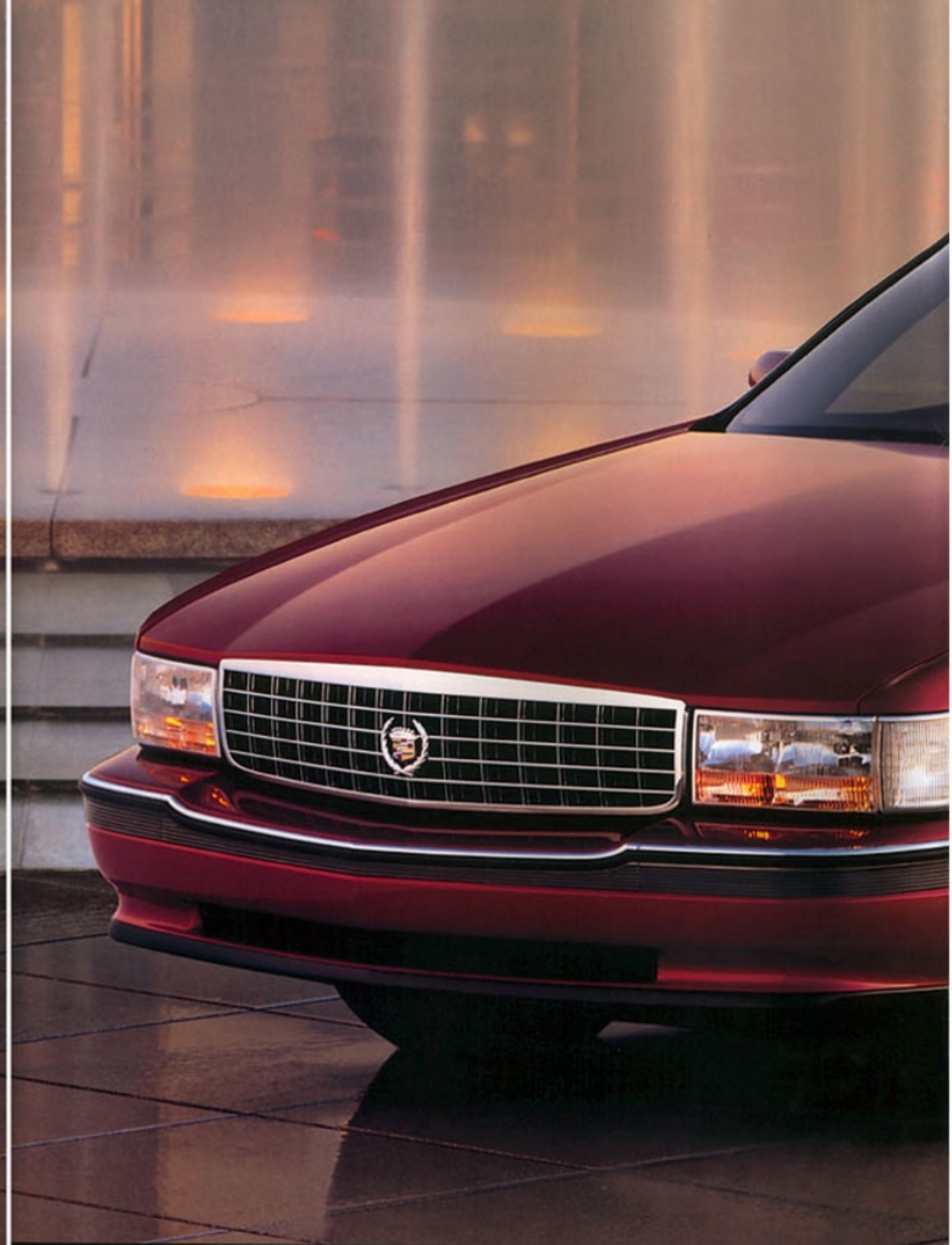
merging virtually effortless. And the DeVille Concours may not require its

first 100,000-mile scheduled tune-up until after the turn of the century.



Now the DeVille
Concours brings the
benefits of the renowned
Northstar System to
full-size luxury.





The DeVille Concours eloquently speaks the language of the road. Its sophisticated application of power, dramatically illustrated by the attributes of the Northstar System, integrates the 270-hp powertrain and an electronically controlled transmission to create a higher standard of performance for the full-size luxury automobile.

The real-time Road-Sensing Suspension reads the road and automatically adapts so that you ride comfortably and confidently.

Further, DeVille Concours provides additional peace of mind with a comprehensive array of safety features, including an Airbank System – dual



front air bags* that help protect all three front seat passengers.

*Always wear safety belts, even with air bags.

Before your Northstar V8 will require its first 100,000-mile scheduled tune-up, you'd have to travel around the world four times.

So complete is the Northstar V8's sophistication that, if necessary for your safety, it can travel up to 50 miles without a single drop of engine coolant.



DEVILLE CONCOURS

The Northstar V8 was the wellspring for related technology that would transform Cadillac's character. An electronically controlled transmission, matched to the 32-valve Northstar's prodigious output, threads its way up and down the gears with nearly seamless perfection. Full-range Traction Control works at any speed to help keep the seemingly endless power

reserves flowing to the pavement. And managing the ride - real-time Road-Sensing Suspension, with its adaptive electronic control so sensitive that it actually reads every inch of the road at 60 mph. Four-wheel anti-lock disc brakes, Speed-Sensitive Steering and Goodyear Eagle GA tires complete DeVille Concours' integrated chassis for touring in the grand manner.

Full-range Traction Control helps reduce unwanted wheel spin under acceleration.

Speed-Sensitive Steering varies the effort, electronically, for easy parking and responsive highway feel.

270-horsepower, 32-valve Northstar V8 with 300 lbs-ft of torque.

Four-wheel anti-lock disc brakes help maintain steering control during severe braking.

Fully independent double wishbone Short/Long Arm rear suspension for stability and smoothness.

16" x 7" squeeze-cast aluminum wheels reduce unsprung weight for ride and comfort.

Goodyear Eagle GA F225/60R16 tires provide responsive handling, smooth ride and all-season versatility.

Real-time Road-Sensing Suspension with electronic control that adapts for comfort and precision.





DeVilLe Concours shown in Carmine Red.



The DeVille Concours. So spacious, it accommodates six passengers in complete comfort. And so responsive, its advanced Northstar System V8 makes passing and merging virtually effortless. It is a combination of qualities you've never seen before.



The leather seating areas of the Deville Concours, shown in Light Gray, are perforated to enhance their breathability.



DEVILLE CONCOURS

DeVilLe Concours embodies Cadillac's highest standard of full-size luxury. Ergonomically sculpted dash, richly grained Zebrano wood, perforated leather seating areas. The refreshing comfort of Suspension Seating acts as a second shock absorber for your back in

concert with four-way power lumbar control and memory driver seat –



The refined amenities of the DeVilLe Concours™ front seats include four-way power lumbar support, power seat recliner and available heated seat.

benefits that should help you stay alert. Because passenger safety is important, DeVilLe Concours uses an Airbank System: Dual front seat air bags that provide supplemental protection for all three front seat passengers.*

*Always wear safety belts, even with air bags.

The ergonomically designed controls provide instant legibility and ready access while the teardrop slope of the instrument panel orients you to the road.





Available open-ops
Astrorof (reduces head
room slightly).

EXCLUSIVE CADILLAC OWNER PRIVILEGES*
Cadillac 4-year/50,000-mile Gold Key
Bumper to Bumper Warranty and 6-year/
100,000-mile rust-through protection.
There is no deductible. Cadillac Consumer
Relations Center, Gold Key Delivery
System, Cadillac Roadside Service.

*For additional information, please see column three opposite p. 24.



Standard 16" x 7"
wheel with wrenth
and crest center cap.



Available 16" x 7"
chromed square-cut
aluminum wheel with
wrenth and crest
center cap.



Standard Delco Active
Audio System: AM
AMAX, stereo/FM
stereo radio, Dolby,
cassette tape, Eleven
amplifiers, 11 speakers.



CD changer mounts in
the luggage compart-
ment. Holds 6 CDs.
Available by dealer
installation.

Available Delco Active
Audio System: AM
AMAX, stereo/FM
stereo radio, CD and
Dolby, cassette players,
Eleven amplifiers,
11 speakers.

DEVILLE CONCOURS

*Feature standard on every 1994 Cadillac

INTERIOR

ARMRESTS AND STORAGE

- Front-seat center armrest, dual cupholder S
- Intentional front shoulder belt set; always up to one inch of slack for comfort S
- Rear-seat center armrest S

CONVENIENCE/CONTROLS

- Automatic door locks (may be dealer-modified to keep doors locked in "Park") S
- Automatic parking brake release S
- Cruise control S
- Electronic climate control S
- Continuous outside temperature display S
- Rear air control S
- Power door locks S
- Rear-door "lock only" convenience S
- Anti-lockout; driver door won't lock with engine off and key in ignition S
- Power windows with driver ergonomism S
- Remote fuel filler door release (on headlamp panel) S
- Retained accessory power S
- Solar Ray tinted glass S
- Seating, 18-Wheel adjustable, leather-trimmed (on, four-spoke design) S
- Trunk horn S
- Unique dual sunshade system; adjustable padded visors plus slide-down front shades S
- Windshield wiper, controlled-cycle S

POWERS

- Defog (w/ windshield and floor) S
- Electric rear window S
- Front side windows S
- Heated windshield O

INSTRUMENT CLUSTER

- Digital S
- Driver information center S
- Fuel data center S
- Oil life and low fluid level messages S

LIGHTING

- Flash-to-pass S
- Floodlight front-door armrest switches S
- Illuminated entry system S
- Overhead mapreading lamps S
- 1-w/night Sensored (with headlamp-on indicator) S

LUGGAGE COMPARTMENT

- Cargo convenience net S
- Carpeted (with mat) S
- Compact spare tire S
- Hidden storage compartment S
- Power deck lid (slam-down) S
- Power deck lid release (on headlamp panel); owner-controlled release (lockout) S
- Spare tire cover S
- 20-cu.-ft. usable capacity with low lifter S

MIRRORS

- Electrochromic automatic dimming inside rearview mirror S
- Overhead illuminated driver and passenger view vanity mirrors, with dimmers S
- Illuminated rear-seat overhead vanity mirrors S

SELECTED SAFETY FEATURES

- Airbag System S
- Air bag—driver and front passenger Supplemental Inflatable Restraint Systems S
- All passenger safety belts accommodate child seats S

DIAGNOSTIC ENERGY RESERVE MODULE back up car battery for air bag S

SEATING

- Heated front seat cushions and seatbacks O
- Memory driver seat with two settings plus exit door map pockets S
- Orthopedically designed front seat with manual headrest S
- Power four-way front seat lumbar controls S
- Power six-way front seat adjusters S
- Power two-way front seat recliners S
- Seatback pockets S
- Suspension Seating S
- Umbrella storage (bottom front of driver seat) S

SECURITY

- Available theft-deterrent system O
- PMS Key II theft-deterrent system S
- Remote keyless entry with central door unlocking S

WOOD

- Zebrano on instrument panel, across all doors S

EXTERIOR APPEARANCE

- 32N Northstar badge S
- Accent striping O
- Body-color flush lift bar door handles S
- Chromed grille with wrenth and crest S
- Clearcoat paint finish for a rich luster S
- Dual door seals to enhance quietness S
- Front license plate mounting—no charge O
- Full lowering rear door glass S
- Galvanized steel on every body panel needing protection S
- Power telescoping antenna, rear-mounted S
- Specific front, side, rear styling accents S

LIGHTING

- Center high-mounted stop lamp S
- Composite tungsten-halogen headlamps S
- Panoramic Illumination S
- Front cornering lamps S
- Rear lamp monitor S

MIRRORS (left- and right-hand)

- Body color S
- Electrochromic (driver side) S
- Heated S
- Power S

POWERTRAIN/CHASSIS

- Brake/transmission shift interlock (apply brake pedal to shift out of "Park") S
- Computer diagnostics S
- Delco Freedom maintenance-free battery S

Dual mufflers, single exhaust outlets S

Equal-length drive shafts S

Front-wheel drive S

Hydramatic engine isolation mounts S

Integral body frame S

Powertrain Control Module S

Stainless steel exhaust system S

140-ampere alternator S

140-ampere alternator S

Powertrain/Chassis

Engine

Northstar 4.6-liter V8

Power 270 hp @ 5600 rpm

Torque 300 lbs-ft @ 4000 rpm

Recommended fuel Premium unleaded

Fuel tank capacity 20 gallons

Performance

0-60 8.2 seconds

EPA estimated mileage 16/25 city/highway

Estimated highway range* 500 miles

Transmission

4T80-E, four-speed automatic

with electronic shift control, overdrive and

Cadillac-exclusive viscous converter clutch

Final drive ratio

Performance 3.1:1

Suspension

Real-time Road-Sensing

electronically adjusts to road surfaces.

Fully independent with coil springs.

Shoel/Long Arm rear on isolated subframe,

rear electronic level control

Steering

Electronically controlled Speed-Sensitive,

power-assisted rack and pinion, 15:1 ratio

Brakes

Boach ABS/IV, four-channel anti-lock,

power four-wheel disc

Trunk Control

ASRIII, full-range

engine power management

Wheels

16" x 7" square-cut aluminum

Tires

Goodyear Eagle GA P225/60R16 all-season

M 8 S16K small radials

*Estimated highway range multiplies EPA highway estimate by fuel tank capacity

Specifications as of 9/93

EXTERIOR DIMENSIONS

Head room front 97.0mm/38.5"

Head room rear 92.5mm/36.4"

Leg room front 108.5mm/42.6"

Leg room rear 110.0mm/43.3"

Hip room front 142.0mm/56.1"

Hip room rear 142.0mm/55.9"

Shoulder room front 155.0mm/61.1"

Shoulder room rear 155.0mm/61.1"

Seating capacity front/rear 3/3

Curb weight 1813.6 kg/3998.2 lbs.

Luggage capacity 56.3 liters/20.0 cu. ft.



D E V I L L E

THE 1994 DEVILLE creates a higher standard by enhancing

the qualities that have made it America's most preferred luxury

automobile. DeVille's refinements will culminate this year by

bringing you a higher level of performance with a smoother, quieter

4.9 liter V8. A higher level of comfort with new Suspension Seating

to make long-distance touring easier. And, Cadillac redefines the

state of the art with the Airbank System* to provide supplemental

protection for three front seat passengers. These refinements were

developed to inspire a feeling of confidence for you and your

passengers, thereby creating a higher standard of satisfaction.

*An enhancement of dual air bag technology. Always wear safety belts, even with air bags.





DeVille achieves a higher standard by matching its substantial amenities with a concentration of advanced performance and safety technologies. Its Speed-Sensitive Suspension (SSS) adjusts DeVille's handling characteristics to respond smoothly at any speed, while its new Short/Long Arm (SLA) independent rear suspension maintains ideal rear-wheel contact with the road under virtually all driving conditions.

DeVille's cargo capacity is increased with a trunk that has 20 cubic feet of space – and specially designed to accommodate large pieces of luggage. Plus a convenient sill lets you rest objects as you pack them, while the low-liftover rim saves stress on your back muscles.



DEVILLE

The result is a predictable solidity that is very reassuring, especially on longer trips.

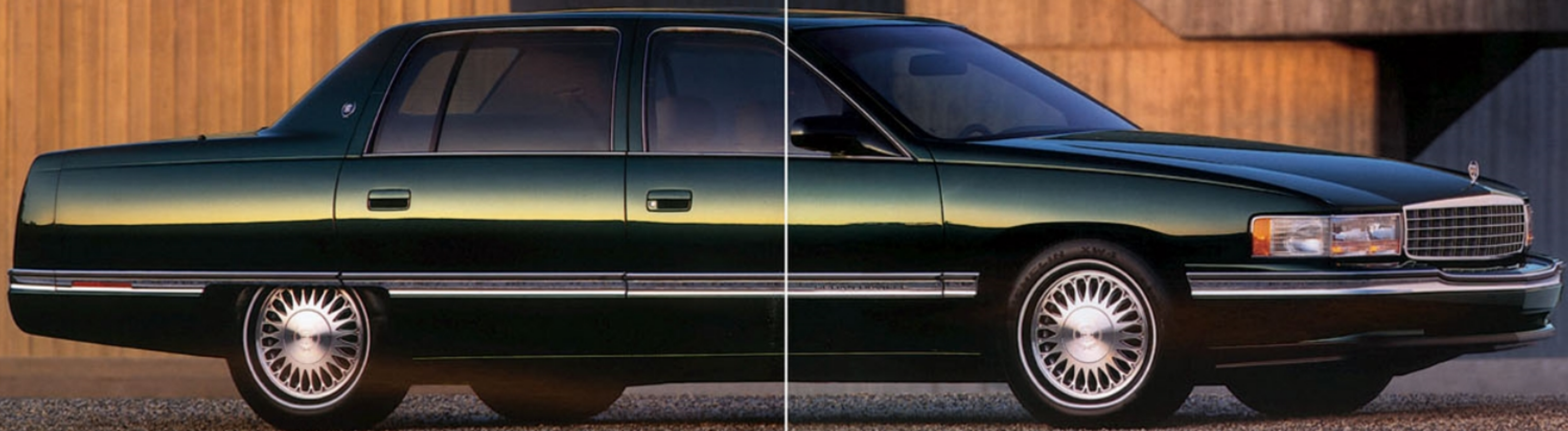
Traveling greater distances will be easier, too, because DeVille's smooth 4.9 liter V8 will help improve your highway mileage, while its expanded 20-gallon fuel tank will combine with the engine refinements to effectively increase your highway cruising range to an impressive 520 miles per tankful*

*Based on EPA's estimated 26 mpg highway and 20-gallon fuel tank.

DeVille's new, more aerodynamic body, dual perimeter door seals, and flush-mounted windshield and back window help reduce wind noise, making this the quietest DeVille ever.

DeVille's proven 4.9 liter V8 has been enhanced for 1994 – with refinements that make it even smoother at idle, quieter during acceleration, and more efficient on the highway with an EPA estimated 26 mpg.





DeVile shown in Colypso Green



This year DeVille takes its already high standard of full-size six-passenger luxury to an even higher level. A more refined powerplant and improved aerodynamics, structure and suspension make it quieter too. Further, DeVille has side-guard door beams that help it exceed 1997 model federal side-impact standards, and the Airbank System – dual front passenger air bags* – that provides supplemental protection for all three front seat passengers.

*Always wear safety belts, even with air bags.



The available leather interior seating areas of the DeVille are shown in Neutral.

D E V I L L E

DeVille's latest advancements in ergonomics surround you and your family with luxurious quietude, while the safety of dual front seat air bags is enhanced by standard anti-lock brakes,

A higher level of safety is achieved with an Airbag System. Dual air bags* help provide supplemental protection for all three front seat passengers.



Speed-Sensitive Suspension and available full-range Traction Control. These performance and active safety technologies work together with DeVille's energy-absorbing crush zones and strong steel safety cage to maintain Cadillac's high standard of safety. While the performance of the smooth 4.9 liter V8 is comforting, DeVille's comfort is exhilarating. One reason is its new Suspension Seating—acting as an extra shock absorber for your back. It should help leave you less fatigued and more refreshed...mile after mile.

Just another way DeVille enhances your level of comfort by creating a higher standard of luxury. DeVille has the largest interior of any front-drive sedan sold in America. Other refinements include higher front and rear seats for a more expansive view of the road ahead. Improved rear-seat angle and height with extra bolstering provide greater comfort there, too. Five-position front shoulder belt adjusters offer greater comfort for driver and passenger, short or tall.

Exceeding government regulations, DeVille's Panoramic Illumination creates a higher standard with over 500 meticulously calibrated headlight lens facets to focus light precisely where it is needed most.

*Always wear safety belts, even with air bags.



A control cluster houses the lighting functions and release switches for the trunk and fuel door, allowing you easier access.

Behind the new leather-wrapped four-spoke steering wheel rim, every contour and every control has been engineered to aid legibility and to help make your driving experience more comfortable.



Available express-open Astroroll® (reduces head room slightly).



Standard Deville Saratoga cloth interior.



Standard front-seat center armrest with cassette/CD storage and dual cupholder.



EXCLUSIVE CADILLAC OWNER PRIVILEGES*
Cadillac 4-year/50,000-mile Gold Key Bumper to Bumper Warranty and 6-year/100,000-mile rust-through protection. There is no deductible. Cadillac Consumer Relations Center. Gold Key Delivery System. Cadillac Roadside Service.

*For additional information, please see dealer brochure (page 34).
*Requires Option Package 15B.



Standard 15" x 6" squeeze-cast aluminum wheel; silver wreath and crest, argent center cap.



Available 15" x 6" chromed squeeze-cast aluminum wheel; colored wreath and crest center cap.



Available 15" x 6" squeeze-cast aluminum wheel with wreath and crest center cap.



Available Delta Active Audio System: AM AMAX, stereo/AM AMAX, stereo/AM stereo radio, Dolby, cassette, eleven amplifiers, 11 speakers.*



Standard Delta AM AMAX, stereo/AM stereo radio, Dolby, cassette tape, graphic equalizer; six speakers at four locations.



Available Delta Active Audio System: AM AMAX, stereo/AM stereo radio, CD and Dolby, cassette players. Eleven amplifiers, 11 speakers.*



CD changer mounts in the luggage compartment. Holds 6 CDs. Available by dealer installation.

• Feature standard on every 1994 Cadillac

INTERIOR

• Front-seat center armrest, dual cupholder	S
• Crankshifter, cassette/CD storage	S
• Rear-seat center armrest	S
CONVENIENCE/CONTROLS	
Automatic door locks (may be dealer-modified to keep doors locked in "Park")	S
• Automatic parking brake release	S
• Cruise control	S
• Electronic climate control	S
• new continuous outside temperature display	S
• rear air control	S
• Power door locks	S
• rear-door "kick only," convenience	S
• new anti-lock; driver door won't lock with engine off and key in ignition	S
• Power windows with driver express-down	S
• Remote fuel filler door release (on headlamp panel)	S
• Retained accessory power	S
• Solar Ray tinted glass	S
• Steering, Tilt-Wheel adjustable, leather-trimmed rim, four-spoke design	S
• Trunk horn	O
• Unique dual sunshade system, adjustable padded visors plus slide-down door shades	S
• Windshield wiper, controlled-cycle	S
DEFOGGER	
• Defog mode (windshield and floor)	S
• Electric rear window	S
• Front side windows	S
• Heated windshield	O
INSTRUMENT CLUSTER	
Digital	S
Driver information center	S
Fuel data center	S
• Oil life and low fluid level messages	S
LIGHTING	
• Flash-to-past	S
• Front/floor-door ambient switches	S
• Illuminated entry system	S
• Overhead map lamps	S
• Twilight Sentinel (with headlamp-on indicator)	S
LUGGAGE COMPARTMENT	
• Cargo convenience net	O
• Carpeted	S
• Compact spare tire	S
• Hidden storage compartment	S
• Mat	O
• Power deck lid pull-down	O
• Power deck lid release (on headlamp panel; owner-controlled release lockout)	S
• Spare tire cover	S
• 20-cu.-ft. usable capacity with low lifter	S
MIRRORS	
• Electrochromic automatic dimming inside rearview mirror	S
• Illuminated driver and passenger vane vanity mirrors, with dimmers	O
SELECTED SAFETY FEATURES	
• Air bags—driver and front passenger	S
• Supplemental Inflatable Restraint Systems	S
• All passenger safety belts accommodate child seats	S
• Diagnostic Energy Reserve module backs up car battery for air bags and informs driver of system readiness	S

DEVILLE



Five-position adjustable front shoulder belts

• Intentional front shoulder belt set allows up to one inch of slack for comfort	S
• Rear belt/seat, direct front passenger	S
• Manual center rear-seat lap safety belt	S
• center front-seat lap safety belt	S
• Manual overhead front/rear lap/shoulder safety belts (front buckles move with seats)	S
• Manual rear door child security locks	S
• Power rear window child security locks, controlled by the driver	S
• Safety belts go through rear outboard seats	S
• Safety belts go through rear seat	S
• Steel safety cage, which exceeds 1992 model dynamic side-impact standards	S
SEATING	
• Heated front seat cushions and seatbacks; includes power two-way front seat recliners	O
• Manual front seat recliners	S
• Nuance leather seating areas and front door map pockets	O
• Orthopedically designed front seats with manual headrests	S
• Power six-way front seat adjusters	S
• Seatback pockets	S
• Suspension Seating	S
SECURITY	
• Anti-theft lock-down system	O
• PASS Key II theft-deterrence system	S
• Remote keyless entry with central door unlocking	S
WOOD-LOOK ACCENTS	
• Renewal pattern on instrument panel and areas of door	S
EXTERIOR APPEARANCE	
• Accent striping	O
• Body-color flush lift bar door handles	S
• Chrome grille, standup hood ornament	S
• Chrome/plastic finish for rich luster	S
• Dual door seals to enhance quietness	S
• Front license plate mounting—no charge	O
• Full locking rear door glass	S
• Galvanized steel on every body panel	S
• Grounding system, rear-mounted	S
• Power telescoping antenna, rear-mounted	S
• Specific front, side, rear styling accents	S
LIGHTING	
• Center high-mounted stop lamp	S
• Composite turn signal halogen headlamps	S
• Panoramic Illumination	S
• Front cornering lamps	S
• Rear lamp modules	S
• Body color (left- and right-hand)	S
• Electrochromic (driver side)	O
• Heated	S
• Power	S
POWERTRAIN/CHASSIS	
• Brake/transmission shift interlock	S
• Ignyl brake pedal to shift out of "Park"	S
• Computer diagnostics	S
• Delco-Freedom maintenance-free battery	S
• Dual-platinum-tipped spark plug for 100,000-mile service intervals	S
• Four-wheel drive	S
• Integral body frame	S
• Powertrain Control Module	S
• Stainless steel exhaust system	S
• 140-ampere alternator	S

OPTION PACKAGE 15B

Electrochromic driver-side outside rearview mirror. Illuminated driver and passenger vane vanity mirrors, with dimmers. Luggage compartment cargo convenience net. Luggage compartment mat. Power luggage compartment lid pull-down. Trunkpet from '94. *If option package 15B. *Requires available leather seating area. *Requires option package 15B.

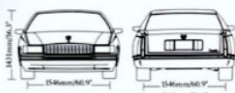
POWERTRAIN/CHASSIS

• Engine	4.9 liter V8 with sequential port fuel injection
• Power	230 hp @ 4000 RPM
• Torque	275 lb-ft @ 3000 RPM
• Recommended fuel	Premium unleaded
• Fuel tank capacity	20 gallons
Performance	
• 0-60	8.3 seconds
• EPA estimated mileage	16/21 city/highway
• Estimated highway range*	520 miles
• Transmission	4T60-E, four-speed automatic with electronic shift control, overdrive and Cadillac-exclusive viscous converter clutch
• Final drive ratio	2.74:1
Suspension	Speed-Sensitive; electronically adapts to changing vehicle speeds.
• Short-Long Arm rear on isolated subframe, rear electronic level control	
Steering	Electronically controlled Speed-Sensitive, power-assisted rack and pinion; 15.6:1 ratio
Brakes	Bush ABS/II, four-channel anti-lock power four-wheel disc
• Traction Control (available)	Bush ABS/II, full-range, brake/sequential cylinder control
• Wheels	15" x 6" squeeze-cast aluminum
• Tires	Michelin XM4 P215/60R15 all-season M+S whitewall radials

*Maximum highway range; multiply EPA highway estimate by tank capacity (Standard as 47.5).

DIMENSIONS

• Head room front	979mm/38.5"
• Head room rear	975mm/38.4"
• Leg room front	1083mm/42.6"
• Leg room rear	1101mm/43.3"
• Hip room front	1426mm/56.1"
• Hip room rear	1420mm/55.9"
• Shoulder room front	1553mm/61.1"
• Shoulder room rear	1536mm/60.5"
• Seating capacity (front/rear)	3/3
• Curb weight	1706.7 kg/3766 lbs.
• Luggage capacity	566.3 liters/20.0 cu. ft.



Drag coefficient: 0.38

The Fleetwood and Fleetwood Brougham create a higher standard of uncompromised strength and substance in a full-size luxury automobile. New for 1994: A specially tuned, second-generation 5.7 liter V8 assures responsive acceleration when you need to pass or merge. And six-passenger roominess is unparalleled in service of your comfort. Fleetwood is, in fact, the roomiest car you can buy. It also enjoys a deserved reputation as one of the safest automobiles you can drive, exceeding 1997 model federal dynamic side-impact safety standards, and providing additional protection for up to three front seat passengers with dual air bags.*

*Always wear safety belts, even with air bags.



New for '94 is an impressive 260-horsepower, 5.7 liter V8 engine linked to an electronically controlled transmission, resulting in smooth, consistent shifting and even more responsive acceleration.

Fleetwood Brougham shown with its standard padded roof and special alloy wheels.

FLEETWOOD

This year's Fleetwood is a virtual compendium of proven advanced technologies with anti-lock brakes, full-range Traction Control and Speed-Sensitive



The Cadillac Fleetwood is the choice of premium coachbuilders* because of its timeless elegance, unmistakable design and spacious comfort befitting limousines without peer.

Steering all on board. Its new 5.7 liter V8 with sequential port fuel injection and dual-platinum-tipped spark plugs

requires no scheduled tune-up for 100,000 miles.

Fleetwood's formidable new engine and a new electronically controlled four-speed overdrive transmission have been integrated into a single synchronous powertrain unit. This combination produces both greater horsepower *and* more torque at lower speeds for quicker, more confident acceleration. Another benefit is impressive highway mileage—an EPA estimated 25 mpg.

*All 1994 limousines are available through manufacturers, retailers and establishments that are not part of the Cadillac Motor Car Division. Availability, price and quality of these items may vary with the respective manufacturers and their sales organizations.

Fleetwood's immense trunk capacity of over 21 cubic feet is complemented by a handy new Cargo Convenience Net to keep smaller parcels in place.



Full-range Traction Control helps provide maximum gripping action on virtually any road surface.



Fleetwood Brougham shown in Dark Adriatic Blue.



While retaining classic Cadillac elegance and style, the 1994 Fleetwood goes to great lengths to provide the qualities you desire most in a luxury automobile. Fleetwood's expansive six-passenger cabin is unequalled among its competitors.



The available leather interior seating areas of the Fleetwood Brougham are shown in Light Gray.



FLEETWOOD

The unsurpassed functionality of Fleetwood Brougham's instrument panel extends to meet your fingertips in the form of the new four-spoke steering wheel, highly legible readouts that are easy on your eyes, and accessible controls that inform at a glance. Equal parts elegance and practicality by



Fleetwood's instrument panel is ergonomically designed for accessibility and legibility.

design, Fleetwood Brougham's power 6-way driver's seat includes a memory adjustment that can be recalled to your favorite position. Cadillac's patented split-frame design allows you to adjust front seatbacks and seat cushions independently for superior back support. A new defog feature allows the windshield to be cleared in cold and inclement weather, while maintaining heat flow to the lower portion of the cabin. And the quiet you notice is the result of our engineers applying the most advanced acoustic techniques to



Dual air bags supplement safety belts to help protect all three front seat passengers.

digitally locate "noise spots," thereby making it easier to minimize their intrusion. Fleetwood's smooth engine, aerodynamic design, and generous amounts of soundproofing also add to the hush.



The center armrest includes a convenient dual cupholder and coinholder plus extra room for tissues, tapes and CDs.



Ask about the advantages of Fleetwood's available Trailer Towing Package when you call toll-free 1-800-43FLEET anytime.

Fleetwood shown with standard painted metal roof.



Fleetwood Brougham shown with standard polished roof and available Automatic (includes head room slightly).



Standard Fleetwood Prestwick cloth interior.



Available Fleetwood Supersoft leather seating areas.



Fleetwood Brougham with cloth or available Supersoft leather seating areas.



EXCLUSIVE CADILLAC OWNER PRIVILEGES
 Cadillac 4-year/50,000-mile Gold Key Bumper-to-Bumper Warranty and 6-year/100,000-mile rust-through protection. There is no deductible. Cadillac Consumer Relations Center, Gold Key Delivery System, Cadillac Roadside Service.

For additional information, please see values sheet opposite p. 74.



Standard 15" x 7" cast aluminum wheel—Fleetwood.



Standard 15" x 7" specific cast aluminum wheel—Fleetwood Brougham.



Available 15" x 7" chromed cast aluminum wheel—Fleetwood, Fleetwood Brougham.



Standard Delta AM AMAX, stereo/AM stereo radio, Dolby, cassette tape. Six speakers at four locations.



CD changer mounts in the luggage compartment. Holds 6 CDs. Available by dealer installation.



CD changer mounts in the luggage compartment. Holds 6 CDs. Available by dealer installation.

FLEETWOOD BROUGHAM
 FLEETWOOD

• Feature standard on every 1994 Cadillac	
INTERIOR	
ARMRESTS AND STORAGE	
• Front-seat center armrest, dual cupholder	S S
• Rear-seat center armrest	S S
• Dual cupholder, storage	S S
• Tissue holder	S S
• Rear-seat center armrest	S S
• Dual cupholder, storage	S S
CONVENIENCE/CONTROLS	
Automatic door locks (modified to stay locked in "Park" with remote keyless entry)	O O
• Automatic parking brake release	S S
• Cruise control	S S
• Electronic climate control	S S
• Rear-seat heat ducts	S S
• Four overhead assist handles	S S
• Power door locks	S S
• Rear-door "lock only" convenience	S S
Power drain protection—timer automatically turns off untreated interior lights	S S
• Power windows with driver express-down	S S
• Retained accessory power	S S
• Solar Ray tinted glass	S S
• Steering, Tilt-Wheel adjustable, leather-trimmed rim, four-spoke design	S S
• Sunroof, solar reflective windshield	O O
• Windshield wiper, controlled cycle	S S
DEFOGGERS	
• Defog mode (windshield and floor)	S S
• Electric rear window	S S
• Front side windows	S S
INSTRUMENT CLUSTER	
Digital	S S
• Oil and low fluid level telltales	S S
• Oil change, deck lid ajar and door ajar indicators	S S
LIGHTING	
• Flash-to-pass	S S
• Illuminated entry system	S S
• Overhead mapreading lamps	S S
• Twilight Sentinel (w/hood-lamp on indicator)	S S
• Lockshield lamp	S S
LUGGAGE COMPARTMENT	
Cargo convenience net	S S
• Carpeted (with mat)	S S
• Cmpages spare tire	S S
• Full-size spare tire	O O
• Power deck lid pull-down	S S
• Power deck lid release	S S
• Spare tire cover	S S
MIRRORS	
Electrochromic automatic dimming inside rearview mirror	O O
Illuminated driver and passenger side vanity mirrors, with dimmers	S S
Illuminated rear-seat overhead vanity mirrors	S S
SELECTED SAFETY FEATURES	
• Air bags—driver and front passenger	S S
• Supplemental Inflatable Restraint Systems	S S
• All passenger safety belts accommodate child seats	S S
• Diagnostic Energy Reserve Module locks up car battery for air bags and informs driver of system readiness	S S
• Intentional front shoulder belt set; allow up to one inch of slack for comfort	S S
• Knee bolsters, driver and front passenger	S S
• Manual center rear-seat lap safety belt	S S
• Center front-seat lap safety belt	S S

• Manual outboard front/rear lap/shoulder safety belts	S S
• Manual rear-seat child security locks	S S
• Manual cr. rear-seat safety belt (tetrax)	S S
• Power rear window child security locks, controlled by the driver	S S
• Safety belt goes through front driver seat	S S
• Safety belts go through rear seats	S S
• Steel safety cage, which exceeds 1997 model dynamic side-impact standards	S S

SEATING	
• Driver memory seat with two settings plus six	S S
• Heated front seat cushions and seatbacks	S S
• Manual articulating headrests	S S
• Power six-way front seat adjusters	S S
• Power eight-element lumbar controls	S S
• Power rear seat front seat recliners	S S
• Seatback pockets	S S

Split-frame construction S345 dual-comfort front seat design	S S
Supersoft leather seating areas	O O
SECURITY	
• PASS Key II theft-deterrent system	S S
• Remote keyless entry system with central door unlocking, audible theft-deterrent system, remote fuel filler door lock/unlock	O O
WOOD TRIM ACCENTS	
• Dark walnut trim appliques on instrument panel, door inserts	S S

EXTERIOR	
APPEARANCE	
• Body-color flush lift bar door handles	S S
• Bright, unique, lower body side molding	S S
• Chromed grille, standing hood ornament	S S
• Clearest paint finish for a rich luster	S S
• Front license plate mounting—no charge	O O
• Full padded roof cover	O O
• Galvanized steel on every body panel	S S
• Rusting protection	S S
• One-piece stamped doors for noise insulation	S S
• Painted roof	S S
• Power telescoping antenna, rear-mounted	O O

LIGHTING	
• Center high-mounted stop lamp	S S
• Composite tangent-halogen headlamps	S S
• Front cornering lamps	S S
• Front and rear lamp monitors	S S
• Fog lamps (left- and right-hand)	S S
• Body color	S S
• Heated	S S
• Power	S S

POWERTRAIN/CHASSIS	
• Body-on-frame construction	S S
• Brake/transmission shift interlock	S S
• Apply brake pedal to shift out of "Park"	S S
• Computer diagnostics	S S
• Delco Freedom maintenance-free battery	S S
• Dual catalytic converters, dual mufflers, single exhaust outlets	S S
• Dual-platinum-tipped spark plugs for 100,000-mile service intervals	S S
• Powertrain Control Module	S S
• Rear-wheel drive	S S
• Stainless steel exhaust system	S S
• Trailer towing package ¹	O O
• 140-ampere alternator	S S

• Manual outboard front/rear lap/shoulder safety belts	S S
• Manual rear-seat child security locks	S S
• Manual cr. rear-seat safety belt (tetrax)	S S
• Power rear window child security locks, controlled by the driver	S S
• Safety belt goes through front driver seat	S S
• Safety belts go through rear seats	S S
• Steel safety cage, which exceeds 1997 model dynamic side-impact standards	S S

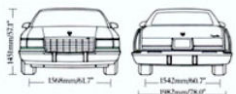
POWERTRAIN/CHASSIS	
Engine.....5.7 liter V8 with sequential port fuel injection	
Power.....280 hp @ 5000 RPM	
Torque.....335 lbs-ft @ 2400 RPM	
Recommended fuel.....Unleaded	
Fuel tank capacity.....23 gallons	
Performance	
0-60.....8.5 seconds	
EPA estimated mileage.....1725 city/highway	
Estimated highway range ²375 miles	
Transmission	
.....4L60-E four-speed automatic with electronic shift control, overdrive and torque converter clutch	

Rear axle ratio	
Fleetwood.....2.56:1	
Fleetwood Brougham.....2.58:1	
Suspension	
Front.....Fully independent Short/Long Arm with coil springs, deflected-disk shock absorbers and stabilizer bar	
Rear.....Four-link with coil springs, stabilizer bar and electronic level control	

Steering	
.....Speed Sensitive (EVOL) recirculated-to-balance highway and parking feel, power-assisted recirculating ball, variable 15:1 ratio	
Brakes	
Standard.....Bosch ABSII, three-channel anti-lock, power front disc/drum, power front disc/dual-drum	
Traction Control	
.....ASRMI, full-range, with throttle-reducer	
Wheels	
.....15" cast aluminum	
Tires	
Fleetwood.....Michelin XW4 P235/70R15 all-season M + S whitewall radials	
Fleetwood Brougham.....Goodyear Eagle GA P235/70R15 all-season M + S whitewall radials	

¹Estimated highway range multiply EPA highway estimate by fuel tank capacity. Specifications at 40°C.

DIMENSIONS	
Head room front.....984mm/38.7"	
Head room rear.....994mm/39.1"	
Leg room front.....1079mm/42.5"	
Leg room rear.....1076mm/42.5"	
Hip room front.....1306mm/51.4"	
Hip room rear.....1306mm/51.4"	
Shoulder room front.....1632mm/64.3"	
Shoulder room rear.....1629mm/64.1"	
Seating capacity front/rear.....3/3	
Curb weight	
Fleetwood.....2030 kg/4477 lbs.	
Fleetwood Brougham.....2044.0 kg/4506.0 lbs.	
Luggage capacity.....587.6 liters/211 cu. ft.	



¹Part of V8 Security Package. *Please call 1-800-431-1111.



Seville STS shown in Sable Black with available chrome wheels.



This world-renowned sports sedan underscores the fact that STS has indeed created a higher standard. To assure such preeminence, we've instilled STS with the quintessential Northstar System. Its key elements are a 295-horsepower V8, real-time Road-Sensing Suspension and sophisticated full-range Traction Control. Equally intrinsic to STS is an uncommonly restrained panache. Think of it as a primary owner privilege.



The perforated leather seating areas of the Seville STS are shown in Neutral.

Engine Northstar 32-valve DOHC V8, 295 hp, with sequential port fuel injection for uncompromising response at all speeds.

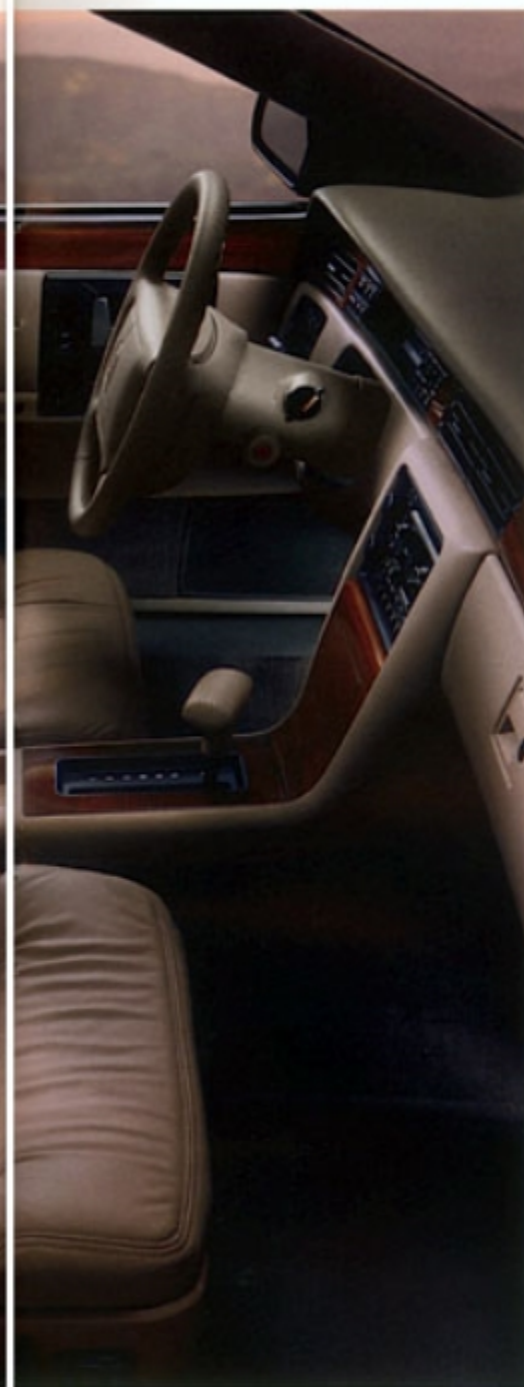
Transmission Four-speed automatic, electronically synchronized for a precise, crisp shift quality.

Suspension Real-time Road-Sensing, electronically modulated for optimum handling under all speed and road surface conditions.

Brakes Anti-lock, four-wheel power disc for all-weather confidence and fade resistance.

Traction Control Full-range, brake/engine modulated for optimum acceleration on a variety of surfaces.

Tires Goodyear Eagle GA, Z-rated to 150 mph, with all-season design for broad-range performance capabilities.



The rewards of driving an STS should be commensurate with those of owning one. To that end, a real-time Road-Sensing Suspension reacts in milliseconds to independently adjust the ride response of each wheel to varying road contours as well as your driving inputs. The result: extraordinary handling combined with luxurious ride. Inside, this technology is complemented with driver and front passenger seats designed to help eliminate fatiguing pressure points through the science of infrared imaging, Genuine Zebrano wood

Northstar System

*Full-range
Traction Control*

*Real-time Road-Sensing
Suspension*

Plus dual front air bags



accents on the dash, doors and console are easy on the eyes. Dual front air bags are provided, of course.* Instrumentation combines the clarity of analog gauges with the precision of digital electronics. A straightforward expression of taste and technology. Like STS itself.

Four-wheel anti-lock brakes, plus full-range Traction Control, help STS maintain an international level of performance.

*Always wear safety belts, even with air bags.



Seville SLS shown in Dark Cherry with available chrome wheels.



The Seville Luxury Sedan (SLS) creates a higher standard all its own with a specially tuned 270-hp Northstar V8. It's part of the famed Northstar System which, for SLS, includes a specifically adjusted suspension along with Michelin touring tires designed for both high performance and comfortable ride.



Available Neutral leather seating areas of the Seville SLS are complemented by real Zebano wood.

Engine Northstar 32-valve DOHC V8, 270 hp, with sequential port fuel injection for optimum low-to mid-range response.

Transmission Four-speed automatic, electronically synchronized with viscous converter clutch for superlative shift smoothness.

Suspension Real-time Road-Sensing, electronically modulated for outstanding ride isolation and precise control.

Brakes Anti-lock, four-wheel power disc for all-weather confidence and fade resistance.

Traction Control Full-range, brake/engine modulated for optimum acceleration on a variety of surfaces.

Tires Michelin all-seasons touring tires, S-rated to 112 mph with specialized construction for performance, comfort and quiet ride.



The performance and amenities of SLS gratify a range of senses. From behind the wheel, one's feeling of exhilaration is piqued by the response of the Northstar System. From an aesthetic perspective, the eyes of the driver and passengers can delight in the natural beauty of genuine Zebano wood trim. Supple leather covers the new four-spoke steering wheel rim to add an especially tactile dimension to the

Northstar System

*Full-range
Traction Control*

*Real-time
Road-Sensing
Suspension*

Plus dual front air bags



The Northstar V8 in SLS is specially tuned for inspiring response in traffic; its transmission, for virtually imperceptible shifts.

interior of SLS. As an appeal to the most discriminating ear, there is a Delco AM stereo/FM stereo radio with auto-reverse cassette and six-speaker sound system. Finally, your sense of security is addressed through dual front air bags* as well as comfort-adjustable safety belts for your convenience. It is all part of the indulgent harmony embodied in SLS.

*Always wear safety belts, even with air bags.

Available express-open
Aerofoam (reduces head
room slightly).



Standard Brite shift
interior—Seville SLS.



Seville SLS with
standard digital
instrument cluster,
column shift and
mini-console.



Seville SLS with
available analog
instrument cluster,
floor shift and
full console.



EXCLUSIVE CADILLAC OWNER PRIVILEGES
Cadillac 4-year/50,000-mile Gold Key
Bumper to Bumper Warranty and 6-year/
100,000-mile rust-through protection.
There is no deductible. Cadillac Customer
Relations Center. Gold Key Delivery
System. Cadillac Roadside Service.

(For additional information, please see column three opposite p. 34.)



Standard 16" x 7"
squeeze-cast aluminum
wheel—Seville STS.



Available 16" x 7"
chromed squeeze-cast
aluminum wheel—
Seville STS.



Standard 16" x 7"
squeeze-cast aluminum
wheel—Seville SLS.



Available 16" x 7"
chromed squeeze-cast
aluminum wheel—
Seville SLS.



Standard Delco-AMAX,
stereo/AM stereo
radio, Dolby, auto-
reverse cassette tape
player, six speakers.



CD changer mounts in
the luggage compart-
ment. Holds 6 CDs.
Available by dealer
installation.



Available Delco/Bose
AM AMAX, stereo/AM
stereo radio, CD and
Dolby, cassette tape
player, custom
equalizer for Seville
interior.

SEVILLE STS SEVILLE SLS

• Feature standard on every 1994 Cadillac	
INTERIOR	
• Front-seat center armrest, dual cupholder	S S
• Full console; storage; floor shift	O S
• Mini-console; storage	S S
• Rear-seat center armrest	S S
CONVENIENCE/CONTROLS	
• Automatic door locks (may be dealer-modified to keep doors locked in "Park")	S S
• Automatic parking brake release	S S
• Cruise control	S S
• Electronic climate control	S S
• —rear air volume/directional controls	S S
• Power door locks	S S
• —rear-door "lock only" convenience	S S
• —new anti-lock-out; driver door won't lock with engine off and key in ignition	S S
• Power windows with driver express-down	S S
• Remote fuel filler door release	S S
• Retained accessory power	S S
• Solar Ray tinted glass	S S
• Steering, Tilt Wheel adjustable, leather-trimmed rim, four-spoke design	S S
• Windshield wiper, controlled-cycle	S S
DEFOGGERS	
• Defog mode (windshield and floor)	S S
• Electric rear window	S S
• Front side windows	S S
• Heated windshield	O O
INSTRUMENT CLUSTERS	
• Analog	O S
• Digital	S S
• Driver information center	S S
• Fuel data center	S S
• Oil life and low fluid level messages	S S
HEATED WINDSHIELD	
• Heated windshield	O O
LIGHTING	
• 3-task no-park	S S
• Floodlit front-door armrest switches	S S
• Illuminated entry system	S S
• Overhead mapreading lamps	S S
• Twilight Sentinel (w/cheat-lamp-on indicator)	S S
• Underhood lamp	S S
LUGGAGE COMPARTMENT	
• Cargo convenience net	S S
• Carpeted (with mat)	S S
• Carpeted deck lid	S S
• Complete spare tire	S S
• Hidden storage compartment	S S
• Power deck lid pull-down	S S
• Power deck lid release	S S
• Spare tire cover	S S
MIRRORS	
• Electrochromic automatic dimming inside rearview mirror	S S
• Illuminated driver and passenger view vanity mirrors, with dimmer	S S
SELECTED SAFETY FEATURES	
• Air bags—driver and front passenger Supplemental Inflatable Restraint Systems	S S
• All passenger safety belts accommodate child seats	S S
• Diagnostic Energy Reserve Module back up car battery for air bags and informs driver of system readiness	S S
• Five-position adjustable front shoulder belts	S S
• Intentional front shoulder belt set allows up to one inch of slack for comfort	S S
• Knee bolsters, driver and front passenger	S S

• Manual center rear-seat lap safety belt	S S
• Manual outboard front/rear lap/shoulder safety belts	S S
• Manual rear-door child security locks	S S
• Safety belts go through rear seats	S S
• Steel safety cage, which exceeds 1997 model dynamic side-impact standards	S S
SEATING	
• Heated front seat cushions and seatbacks	O O
• Nuance leather seating area	O O
• Nuance perforated leather seating area	S S
• Orthopedically designed front bucket seats with manual articulating headrests	S S
• Power six-way front seat lumbar controls	O S
• Power six-way front seat adjusters	S S
• Power two-way front seat recliners	S S
• Seatback pockets	S S
• Suspension Seating	S S
SECURITY	
• Audible theft-deterrent system	O S
• PASS Key II theft-deterrent system	S S
• Remote keyless entry with central door unlocking	S S
WOOD	
• Zebano on instrument panel, door trims	S S
• —plus on console, across all doors	S S
EXTERIOR APPEARANCE	
• 32" Northern badge	S S
• Accent striping	O S
• Body-color fiftieth lift bar door handles	S S
• Body-color grille with wreath and crest	S S
• Chrome/plastic, stand-up hood ornament	S S
• Clearcoat paint finish for a rich luster	S S
• Front license plate mounting—no charge	O O
• Galvanized steel on every body panel	S S
• Ice-cold engine, rear-mounted	S S
• Power telescoping antenna, rear-mounted	S S
LIGHTING	
• Center high-mounted stop lamp	S S
• Composite tungsten-halogen headlamps	S S
• Panoramic illumination	O S
• Fog lamps in front fascia	S S
• Front cornering lamps	S S
• Front cornering lamps	S S
MIRRORS (left- and right-hand)	
• Body color	S S
• Electrochromic (driver side)	O S
• Heated	S S
• Power	S S

POWERTRAIN/CHASSIS

• Brake/steering/shift interlock	S S
• Apply brake pedal to shift out of "Park"	S S
• Computer diagnostics	S S
• Delco Freedom maintenance-free battery	S S
• Dual mufflers, quad exhaust outlets	S S
• Dual-platinum-tipped spark plugs for 100,000-mile service intervals	S S
• Equal-length drive axles	S S
• Front-wheel drive	S S
• Front-wheel engine isolation mounts	S S
• Integral body-frame	S S
• Powertrain Control Module	S S
• Stainless steel exhaust system	S S
• 140-amp alternator	S S

*Not available. 17V Sport Appearance equipment. Requires available Nuance leather seating area.

POWERTRAIN/CHASSIS

Engines	
Seville SLS	Northern 4.9 liter V8
Power	270 hp @ 5600 rpm
Torque	300 lb-ft @ 4000 rpm
Seville STS	Northern 4.9 liter high-output V8
Power	295 hp @ 6000 rpm
Torque	290 lb-ft @ 4400 rpm
Fuel/capacity	Premium unleaded/20 gallons
Performance	
0-60	7.5 seconds
EPA estimated mileage	26/35 city/highway
Estimated highway range*	500 miles
Transmissions	
Seville SLS	4TR-6 four-speed automatic with electronic shift control, overdrive, Cadillac-exclusive viscous converter clutch
Seville STS	4TR-6 four-speed automatic with electronic shift control, overdrive, pulse-width-modulated torque converter clutch
Final drive ratios	
Seville SLS	Performance 3.111
Seville STS	High-performance 3.711
Suspensions	
Seville SLS	Real-time Road-Sensing, electronically adapts to road surfaces. Fully independent coil springs, Short-Long Arm rear, rear electronic level control
Seville STS	Real-time Road-Sensing, electronically adapts to road surfaces
Steering	
Seville SLS	Electrically controlled Speed-Sensitive, power-assisted rack and pinion, 15.6:1 ratio
Brakes	
Seville SLS	Rock ABSIII ₄ four-channel anti-lock; power four-wheel drive engine power management
Traction Control	
Seville SLS	ASRIII ₄ full-range
Wheels	
Seville SLS	Specific 16" x 7" squeeze-cast aluminum
Tires	
Seville SLS	Michelin XM4 P225/60R16 all-season
Seville STS	Goodyear Eagle G225/60ZR16 M + S blackwall radial
Seville STS	Goodyear Eagle G225/60ZR16 M + S, Z-rated blackwall radial
<small>*Estimated highway range: multiply EPA highway estimate by fuel tank capacity.</small>	
DIMENSIONS	
Head room	front 96.0mm/38.0" rear 97.2mm/38.3"
Leg room	front 109.2mm/43.0" rear 99.3mm/39.1"
Hip room	front 139.8mm/55.0" rear 146.4mm/57.6"
Shoulder room	front 149.6mm/59.3" rear 146.0mm/57.5"
Seating capacity (front/rear)	2/3
Curb weight	1730 kg/3815 lb.
Seville STS	1765 kg/3903 lb.
Luggage capacity	407.8 liters/14 cu. ft.
EXTERIOR DIMENSIONS	
17.1m/56.2" L	17.1m/56.2" L
1.83m/59.9" H	1.83m/59.9" H
2.07m/67.9" L	2.07m/67.9" L
1.81m/59.4" H	1.81m/59.4" H
1.81m/59.4" H	1.81m/59.4" H
0.33	0.33



Eldorado Touring Coupe shown in Polo Green with available chrome wheels.



Cadillac's philosophy of promoting a union of the driver and the driving has resulted in the creation of a higher standard of motoring excellence. The Eldorado Touring Coupe embraces this thinking from the outside in. The strength and agility of its exclusive Northstar System integrates the powertrain, suspension and safety features to create this higher standard of performance.

E L D O R A D O
T O U R I N G C O U P E

Inside the Eldorado Touring Coupe, every detail focuses on your need for control and refinement. The aesthetics of a personal performance car are most pronounced, from the backlit analog gauges and hand-finished Zebrano wood to the safety of dual front seat air bags.* Your seating comfort is enhanced by Cadillac's patented power lumbar supports: They let you adjust the exact height and depth you require for optimum back support.

Once you take a test drive and experience the Northstar System, you'll notice it's tuned to a more international driving style: It never runs out of breath, even at highway speeds. Its technology is a showcase on any road, in any country: ABS and full-range Traction Control, along with real-time Road-Sensing Suspension, give you superb control on a variety of road conditions.

*Always wear safety belts, even with air bags.



Engine Northstar 32-valve DOHC V8, 295 hp, and sequential port fuel injection for uncompromising response at all speeds.

Transmission Four-speed automatic, electronically synchronized for a precise, crisp shift quality.

Suspension Real-time Road-Sensing, electronically modulated for optimum handling under all speed and road surface conditions.

Brakes Anti-lock, four-wheel power disc for all-weather confidence and fade resistance.

Traction Control Full-range, brake/engine modulated for optimum acceleration on a variety of surfaces.

Tires Goodyear Eagles, Z-rated to 150 mph, with all-season design for broad-range performance capabilities.



Northstar System

*Full-range
Traction Control*

*Real-time Road-Sensing
Suspension*

Plus dual front air bags

The Light Gray leather seating areas of the Eldorado Touring Coupe are naturally tanned for greater suppleness.



Eldorado Touring Coupe has a full-range Traction Control system that operates at any speed and in all weather conditions.



Eldorado shown in Mocha with available chrome wheels.



A seamless expression of the American driver's will...and a higher standard of driving satisfaction. These are goals the new Eldorado strives for with uncompromising vigor. From its specially tuned 270-hp Northstar V8 to its new dual exhaust outlets, one ride lets you know in no uncertain terms: This is a true driver's luxury coupe that places equal emphasis on high performance and refined comfort.

E L D O R A D O

Eldorado's fresh approach to grand touring emanates from the inside out. From its new four-spoke steering wheel to the available analog instrumentation, you are at the helm of a true driver's coupe.

Its specially tuned real-time Road-Sensing Suspension (RSS) gives you a more comfortable overall ride because it reads the road for spirited, controlled cornering and a smooth ride that is as comfortable as it is compliant.

Dual air bags, used to supplement safety belts, enhance driver and front passenger safety, while a new shoulder belt feature allows you to make adjustments to enhance your comfort. At the same time, Eldorado is every inch a luxury automobile, with five-passenger roominess that's more spacious than many luxury sedans.



Northstar System

*Full-range
Traction Control*

*Real-time
Road-Sensing
Suspension*

Plus dual front air bags

Engine *Northstar 32-valve DOHC V8, 270 hp, and sequential port fuel injection for optimum low- to mid-range speed response.*

Transmission *Four-speed automatic, electronically synchronized with Cadillac-exclusive viscous converter clutch for superlative shift smoothness.*

Suspension *Real-time Road-Sensing, electronically modulated for outstanding ride isolation and precise control.*

Brakes *Anti-lock, four-wheel power disc for all-weather confidence and fade resistance.*

Traction Control *Full-range, brake/engine modulated for optimum acceleration on a variety of surfaces.*

Tires *Michelin all-seasons touring tires, S-rated to 112 mph with specialized construction for performance, comfort and quiet ride.*



Its 32-valve Northstar V8, new to Eldorado this year, produces 300 lbs.-ft. of torque...the most of any front-drive automobile sold in America. The result is quicker off-the-line acceleration.

The available leather seating areas of the Eldorado are shown in Neutral.

Available Eldorado V4C Sport Appearance Package: Grill-mounted wreath and crest, Touring Coupe wheels, analog instrument cluster, full floor console, floor shift.



Available express-open Astorone (reduces head room slightly).



Standard Bistre cloth interior—Eldorado.



Eldorado with standard digital instrument cluster, column shift, mini-console and Bistre cloth interior.



Eldorado (with available V4C option) analog instrument cluster and floor shift.



EXCLUSIVE CADILLAC OWNER PRIVILEGES*
Cadillac 4-year/50,000-mile Gold Key Bumper-to-Bumper Warranty and 6-year/100,000-mile no-through-protection. There is no deductible. Cadillac Consumer Relations Center. Gold Key Delivery System. Cadillac Roadside Service.

*For additional information, please see within about opposite p. 74.



Standard 16" x 7" squeeze-cast aluminum wheel—Eldorado Touring Coupe; Eldorado (V4C option).



Available 16" x 7" chromed squeeze-cast aluminum wheel—Eldorado Touring Coupe.



Standard 16" x 7" chromed squeeze-cast aluminum wheel—Eldorado.



Available 16" x 7" chromed squeeze-cast aluminum wheel—Eldorado.



Standard Delco AM AMAX stereo /FM stereo radio, Dolby, auto-reverse cassette tape player, 31 speakers.



CD changer mounts in the luggage compartment. Holds 6 CDs. Available by dealer installation.



Available Delco/Rose AM AMAX stereo/FM stereo radio, CD and Dolby, cassette players; custom-equalized for Eldorado interior.

ELDORADO TOURING COUPE ELDORADO V

* Feature standard on every 1994 Cadillac.

INTERIOR

- **ARMRESTS AND CONSOLES**
 - Front-seat center armrest, dual cupholder S S
 - Full console storage; floor shift O S
 - Mini-console storage S S

CONVENIENCE CONTROLS

- Automatic door locks (may be dealer-modified to keep doors locked in "Park") S S
- Automatic parking brake release S S
- Cruise control S S
- Electronic climate control S S
- Rear air volume/directional controls S S
- Power door locks S S
- New anti-knockout driver door won't lock with engine off and key in ignition S S
- Remote fuel filler door release S S
- Remotely accessed power S S
- Solar Ray tinted glass S S
- Steering, Tie-Wheel adjustable, leather-trimmed rim, four-spoke design S S
- Windshield wiper, combed-cycle S S

DEFROGERS

- Defog mode (windshield and floor) S S
- Electric rear window S S
- Front side windows S S
- Heated windshield O O

INSTRUMENT CLUSTERS

- Analog O S
- Digital S S
- Driver information center S S
- Fuel data center S S
- Oil life and low fluid level messages S S

LIGHTING

- Flash-to-past S S
- Illuminated entry system S S
- Overhead mapreading lamps S S
- Twilight Sensing (headlamp-on indicator) S S
- Underhood lamp S S

LUGGAGE COMPARTMENT

- Cargo convenience net S S
- Carpeted trash mat S S
- Compact spare tire S S
- Hidden storage compartment S S
- Power deck lid pull-down S S
- Power deck lid release S S
- Spare tire cover S S

MIRRORS

- Electrochromatic automatic dimming inside rearview mirror S S
- Illuminated driver and passenger vision vanity mirrors, with dimmers S S

SELECTED SAFETY FEATURES

- Air bags—driver and front passenger Supplemental Inflatable Restraint Systems S S
- All passenger safety belts accommodate child seats S S
- Diagnostic Energy Reserve Module backs up car battery for air bags and informs driver of system readiness S S
- Intentional front shoulder belt set: allows up to one inch of slack for comfort S S
- Knee bolsters, driver and front passenger S S
- Manual center rear-seat lap safety belt S S
- Manual overhead front/rear lap/shoulder safety belts S S

- Safety belts go through rear seats S S
- Steel safety cage, which exceeds 1992 model dynamic side-impact standards S S

SEATING

- Heated front seat cushions and seatbacks O O
- Nonsuede perforated leather seating area S S
- Noise-reducing leather seating areas O O
- Orthopedically designed front bucket seats with manual articulating headrests S S
- Power four-way front seat lumbar controls O S
- Power six-way front seat adjusters S S
- Power two-way front seat recliners S S
- Scatback pockets S S
- Suspension Seating S S

SECURITY

- Audible theft-deterrent system O S
- PASS Key II theft-deterrent system S S
- Remote keyless entry with central door unlocking S S

WOOD

- Zebrawood on instrument panel, door fronts S S
- plus on console S S

EXTERIOR

APPEARANCE

- 32V Northern badge S S
- Accent striping O O
- Body-color flush lift bar door handles S S
- Body-color grille with wreath and crest S S
- Chromed grille, standard hood ornament S S
- Chromed grille with wreath and crest O O
- Clearcoat paint finish for a rich luster S S
- Front license plate mounting—no charge O O
- Galvanized steel on every body panel needing protection S S
- Power telescoping antenna, rear-mounted S S
- Sport Appearance Package O O

LIGHTING

- Center high-mounted stop lamp S S
- Corrosion-resistant halogen headlamps S S
- •Passive Illumination S S
- Fog lamps in front fascia S S
- Front cornering lamps S S

MIRRORS

- Body-color mirrors (left- and right-hand) S S
- Electrochromatic (driver side) O S
- Heated S S
- Power S S

POWERTRAIN/CHASSIS

- Brake/transmission shift interlock (apply brake pedal to shift out of "Park") S S
- Computer diagnostics S S
- Delco Freedom maintenance-free battery S S
- Dual mufflers, quad outlets S S
- Dual platinum-tipped spark plugs for 100,000-mile service intervals S S
- Equal-length drive axles S S
- Front-wheel drive S S
- Hydromount engine isolation mounts S S
- Integral body-frame S S
- Powertrain Control Module S S
- Stainless steel exhaust system S S
- 140 ampere alternator S S

*Available V4C Sport Appearance Package: chromed grille with wreath and crest, Touring Coupe wheels, analog instrument cluster, full console, floor shift. Requires available Noise Barrier sound-dampening.

POWERTRAIN/CHASSIS

Engines

Eldorado	Northern 4.6 liter V8
Power	270 hp @ 5600 rpm
Torque	300 lbs-ft @ 4000 rpm
Eldorado Touring Coupe	Northern 4.6 liter high-output V8
Power	295 hp @ 6000 rpm
Torque	290 lbs-ft @ 4400 rpm
Fuel economy	Premium unleaded/20 gallons

Performance

0-60	7.8 seconds
EPA estimated mileage	16/25 city/highway
Estimated highway range	500 miles

Transmissions

Eldorado	4T80-E four-speed automatic with electronic shift control, overdrive; Cadillac-exclusive viscous converter clutch
Eldorado Touring Coupe	4T80-E four-speed automatic with electronic shift control, overdrive; pulse-width modulated torque converter clutch

Final drive ratios

Eldorado	Performance 3.11:1
Eldorado Touring Coupe	High-performance 3.71:1

Suspensions

Eldorado	Real-time Road Sensing electronically adapts to road surfaces. Fully independent with coil springs. Short-Long Arm rear, rear electronic level control
Eldorado Touring Coupe	Real-time Road Sensing electronically adapts to road surfaces. Similar to Eldorado, tuned for Touring Coupe characteristics.

Steering

Eldorado	Electronically controlled Speed-Sensitive, power-assisted rack and pinion, 15:6:1 ratio
----------	-------	---

Brakes

Eldorado	Boch ABS/4-wheel disc power full-wheel drive
----------	-------	--

Traction Control

Eldorado	ASRII™ four-wheel drive engine power management
----------	-------	---

Wheels

Eldorado	Specific 16" x 7" squeeze-cast aluminum
----------	-------	---

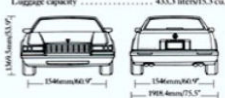
Tires

Eldorado	Michelin XW4 P225/60R16 all-season M + S Blackwall radial
Eldorado Touring Coupe	Goodyear Eagle GA P225/60ZR16 all-season M + S, Z-rated blackwall radial

*Standard higher wear multiple V8 tires require the full-track option. Specifications as of 9/93.

DIMENSIONS

Head room	front 93.0mm/32.4" rear 92.2mm/36.3"
Leg room	front 109.5mm/42.6" rear 98.0mm/38.1"
Hip room	front 116.0mm/32.6" rear 104.0mm/35.7"
Shoulder	front 147.0mm/58.2" rear 146.0mm/57.4"
Seating capacity front/rear	2/3
Curb weight	1711.6 kg/3771.4 lbs
Eldorado	1732.0 kg/3818.4 lbs
Eldorado Touring Coupe	433.3 liters/5.3 cu. ft.



In 1994, Cadillac creates a higher standard in sound systems with an all-new Active Audio System (AAS); with refined Delco/Bose systems; and with an owner-programmable CD changer. **ACTIVE AUDIO SYSTEM** All-new and standard in DeVille Concours and available in DeVille¹ AM AMAX stereo/FM stereo, cassette tape player. The audio is split into three frequency ranges (low, mid-range and high), equalized, and fed to 11 amplifiers (total power, 160 watts). The 11 amplifiers connect to 11 strategically located speakers that enhance imaging and enable normal conversations between front and rear occupants with-

out having to turn the volume down. Ergonomically designed controls are easy to use.



Also available with cassette tape and CD players for DeVille Concours and DeVille.

DELCO/BOSE SYSTEM

1994 Delco/Bose Gold Series Sound Systems feature wider frequency response and improved bass response to enhance the audio experience. Speaker designs, with patented voice-coil technology, endure torture testing

over a -40°F to +140°F range to assure durability.

Available in Eldorado and Seville.

The 11 speakers of the 1994 Active Audio System are placed for ideal staging and imaging.

COMPACT DISC CHANGER

Holds six CDs in a secure luggage compartment location. Convenient remote-control operation lets you select random play or 32-track programming per magazine or up to 16 different magazines. Compatible with many home multiple-play CD changers for extra convenience.

Available from your dealer for all

1994 Cadillacs.

Reception Option Package 308.

AM AMAX enhancements high fidelity (to 7500 Hz), adjustable receiver bandwidth (wide for higher fidelity, narrow for noise reduction) and auto-tuning (to further reduce noise) extended AM tuning (to 1700 kHz).

Reception C-QuantSM stereo broadcasts. Most AM stereo stations across the country broadcast in C-Quant, but some do not. Check with your local station for compatibility in your area.



IMPORTANT WORDS ABOUT THIS CATALOG...

We have tried to make this catalog as comprehensive and factual as possible. We reserve the right, however, to make changes at any time, without notice, in prices, colors, materials, equipment specifications, models and availabilities. Since some information may have been updated since the time of printing, please check with your Cadillac dealer for complete details.

...**ENGINES** Cadillacs are equipped with engines produced by different operating units of GM, its subsidiaries or suppliers to GM worldwide.

...**ASSEMBLY** Cadillacs are assembled by different operating units of General Motors, its subsidiaries or suppliers to GM worldwide. Cadillacs incorporate thousands of components produced by different operating units of GM, its subsidiaries or suppliers to GM worldwide. We sometimes find it necessary to produce Cadillacs with different or differently sourced components than originally scheduled. All such components have been approved for use in Cadillacs and will provide the quality performance associated with the Cadillac name. Since some options may be unavailable when your vehicle is assembled, we suggest that you verify that your vehicle includes the equipment you ordered, or if there are changes, that they are acceptable to you.

...**UPDATED SERVICE INFORMATION** Cadillac regularly sends its dealers useful service bulletins about Cadillac products. Cadillac monitors product performance in the field. We then prepare bulletins for servicing our products better. Now you can get these bulletins, too. Ask your dealer. To get ordering information, call toll-free 1-800-551-4123.

...**FINANCING OR LEASING, IT'S AS EASY AS GM-C** Financing is done right in the showroom. Terms are tailored to suit your personal needs. You can choose your monthly payment date.

...**CORROSION PROTECTION** Cadillacs are designed and built to resist corrosion. All body sheet metal components are warranted against rust-through corrosion for 6 years/100,000 miles. There is no deductible on any Cadillac warranty. See your Cadillac dealer for terms of these limited warranties.

...**WARRANTY** The GM 4-year/50,000-mile Gold Key Bumper to Bumper limited warranty covers repairs for any new Cadillac, including labor and parts, to correct any defects in material or workmanship occurring during the warranty period. The complete vehicle will be covered for 4 years or 50,000 miles, whichever comes first, except for items which are covered by their manufacturer's adjustments and normal maintenance items. Plus free towing and a portfolio of other services. There is no deductible on any Cadillac warranty. See your Cadillac dealer for terms of these limited warranties.

CADILLAC, the CADILLAC emblem, FLEETWOOD, SEVILLE, SEVILL SLS, DEVILLE, ELDERADO, NORTHSTAR, CADILLAC ROADSIDE SERVICE, TWILIGHT SENTINEL, FREEDOM and the GM emblem are registered trademarks of the General Motors Corporation. BUCKHAM and THUNDERBOLT are trademarks of General Motors Corporation. GM GLOBE EMERALD is a service mark of General Motors Corporation. PMS KEY is a registered trademark of the Delco Electronics Corporation. GMC and SMARTLEASE are registered trademarks of the General Motors Acceptance Corporation. Life in U.S.A. 1994 © 1993 GM CORP. All Rights Reserved. Always wear safety belts, even with air bags.

EXTERIOR COLORS

		
13 Platinum	20 Light Montana Blue	21 Medium Montana Blue
		
22 Dark Montana Blue	33 Frost Beige	40 Caillion White
		
41 Sable Black	60 Mocha	72 Carmine Red
		
77 Dark Cherry	87 Academy Gray	91 Polo Green
		
92 Calypso Green	93 White Diamond	14 Light Gray
		
18 Slate Green	30 Medium Adriatic Blue	36 Light Adriatic Blue
		
39 Dark Adriatic Blue	63 Taupe	91 Majestic Amethyst

KEY

- ▲ All Cadillacs
- DeVille Concours, DeVille, Seville STS, Seville SLS, Eldorado Touring Coupe, Eldorado
- DeVille Concours, DeVille, Seville SLS, Eldorado
- △ DeVille Concours, DeVille, Fleetwood, Seville SLS, Eldorado
- Fleetwood, Fleetwood Brougham
- Available at extra charge

¹ Limited colors available on Seville STS and Eldorado Touring Coupe.



CADILLAC
CREATING A HIGHER STANDARD