

# 1986 CHEVROLET

SPRINT

CAVALIER

CAPRICE

CHEVETTE

CELEBRITY

NOVA

CAMARO

MONTE CARLO

CORVETTE

SPECTRUM



## Today's Chevrolet. On the Move.

■ Fast-paced workdays, action-packed weekends. A night on the town. A vacation in the country. You're on the way up, moving fast, and you want a car that fits your style. Welcome to Today's Chevrolet. ■ Because you've changed, we've changed. You'll see a new enthusiasm in our products, the kind you can experience best from behind the steering wheel. ■ Feel the quick, nimble response of Cavalier and you'll know why this car has soared to the very top of the sales charts. Take a close look at our new Nova. It's the product of a revolutionary joint manufacturing venture between General Motors and Toyota that gives car buyers the best of both worlds. Drive Celebrity Eurosport, the contemporary sport sedan with a Corvette-inspired suspension. Thrill to the performance thunder of an American sports legend, Camaro Z28. ■ This is the expressive style and the state-of-the-art technology you desire. The quality you demand. And the performance you love. ■ This is Today's Chevrolet. ■



CHEVROLET NOVA



CAVALIER RS

## Sprint. It Loves to Run.

The name says it all. Sprint. Lively, nimble, full of dash and zest. A Japanese-built minicar that delivers the spirited transportation you want and an EPA estimated **44** city miles per gallon\* you'll appreciate. A vehicle that loves to run around.

Around town, with bantam dimensions that are perfect for urban commuting. Around traffic, thanks to front drive and rack-and-pinion steering that make the car responsive to your every command.

And to keep up with you, Sprint's eager 3-cylinder/5-speed power team makes tracks whether you're headed into a workday or taking off with surf and sun in mind.

Of course, you want your friends to share this pleasure. So Sprint invites three companions to join you, while the handy hatchback accommodates your gear.

For even more versatility, choose Sprint Plus. It's the four-door hatchback version of this mighty mini, with additional rear seat room and

lively styling all its own.

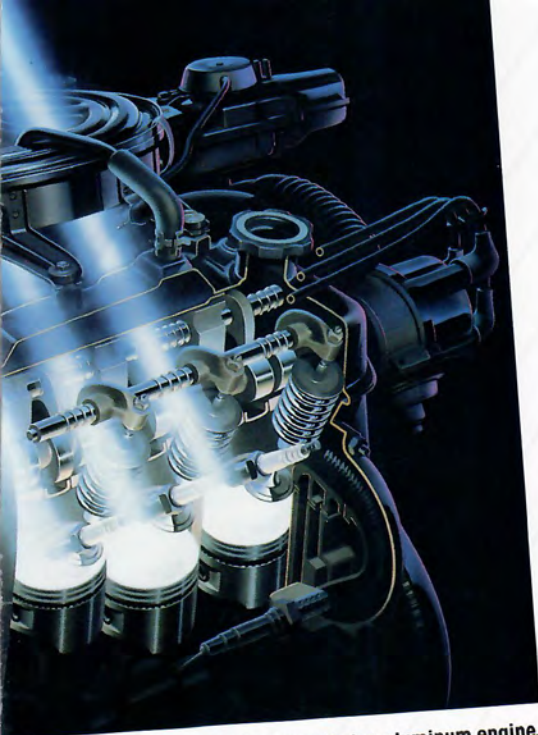
Whether your choice is Sprint or Sprint Plus, you get full foam reclining front bucket seats, a convenient folding rear seat, door-to-door cut-pile carpeting and an instrument panel with well-placed, easy-to-read gauges.

Chevrolet's fun-seeking Sprint and Sprint Plus.

It's an attitude as much as a car.

\*50 highway MPG. Use for comparison. Your mileage may differ.





Sprint's 3-cylinder aluminum engine.



Sprint Plus 4-Door Hatchback Sedan.

Sprint Hatchback Coupe.





## Chevette. Dependable Money Manager.

When Americans find a good thing, they stick with it. Nearly two and a half million Americans can't be wrong. That's how many owners have made Chevette the watchword

in affordable transportation.

From the beginning, Chevette was built to be dependable. Both four-door hatchback sedan and two-

door hatchback coupe models have a sturdy 1.6 Liter overhead cam engine as standard equipment. The choice of a standard 4-speed manual, available 5-speed manual or 3-speed automatic lets you select the transmission you want. Rack-and-pinion steering and Full Coil suspension provide Chevette with nimble response.

Chevette's list of standard features includes AM radio (may be deleted for credit),

argent-styled road wheels, steel-belted all-season radial tires, front disc/rear drum braking and protective body side moldings. Every Chevette also gets a shield of anti-corrosion protection so extensive that every inch of exposed metal is coated.

Inside, you're treated to reclining front bucket seats, door-to-door carpeting and convenient front door pockets.

With so much built-in value, you can count on Chevette to





Chevette CS 4-Door Hatchback.

last. As a matter of fact, at last count over 94% of all Chevettes registered were still on the road, racking up over 167 billion owner-driven miles.\* A record like that is sure to keep Chevette owners proud of their investment.

\*Source: R. L. Polk & Co. Registrations, July 1, 1984.



Chevette S Hatchback Coupe.

# Spectrum. Chevy's Classy, Sassy Small Car.

Fresh. Good-looking. Sporty.  
Well appointed. Affordable.  
This is Spectrum, the  
sophisticated import from

Today's Chevrolet.

Here's remarkable engineering with an excellent power-to-weight ratio. Front-drive, 5-speed transmission and a spirited 1.5 Liter overhead cam engine produce a 0-50 test track time of only 8.2 seconds.\* Who says you can't have your practicality and enjoy it, too?

The Japanese-built Spectrum is available as an elegant four-door sedan or a practical two-door hatchback,

both of which carry four six-foot adults in spacious, quiet comfort. As you open the doors and look in, you'll notice a richness of appearance throughout and the sporty flair of front bucket seats.

There are thoughtful touches everywhere. Storage bins on the front doors. A floor console with compartments for small items. Illuminated controls a fingertip away from the steering wheel. Remote control outside mirror on the driver's

side. A shift light that tells you when to change gears for economy. In the coupe model, Spectrum features a split-folding rear seat and a carpeted load floor with straps that keep skis, golf clubs or other cargo firmly in place.

It all adds up to room and comfort within the classic design of a more expensive automobile.

*\*Performance figures were obtained by a professional driver on a GM test track.*



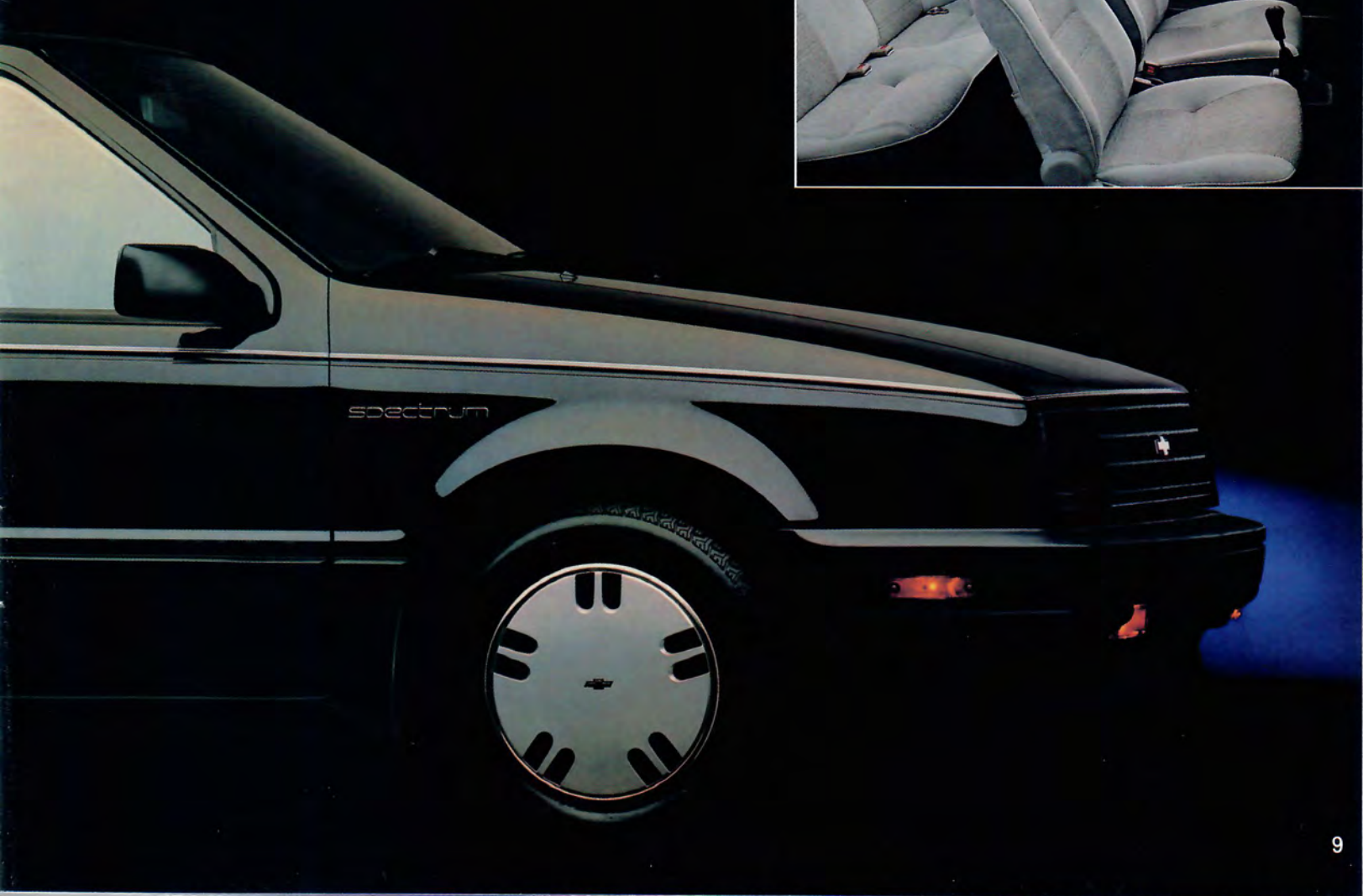




Spectrum Hatchback Coupe.

Spectrum 4-Door Sedan.

Spectrum Sedan interior.







Nova 4-Door Sedan.

Nova CL interior.

## Nova. The Best of Both Worlds.

Welcome to an exciting venture in automotive production. General Motors and Toyota Motor have entered a joint manufacturing venture to bring you Nova, a new, high-quality car.

Nova incorporates everything you expect in a sedan designed to today's demanding standards—surefooted front drive, responsive rack-and-pinion steering, smooth-shifting 5-speed manual transmission and lightweight unitized construction.

Setting the car apart are four-wheel independent suspension, gas-filled rear struts, power front disc/rear drum brakes and all-season steel-belted radial tires—a combination standard for the first time ever on a domestically produced small car.

Sprightly performance is provided by a 1.6 Liter 4-cylinder overhead cam engine, working with a precise 5-speed manual transmission. A 3-speed automatic transmission is available at extra cost.

Choose from two good-looking body styles, a six-

window sedan with room for five adults and a spacious 13.8-cubic-foot trunk or the versatile hatchback sedan.

Either way, you'll be getting a small car with a surprising number of standard amenities:

five ventilation louvers to circulate outside air to all occupants, side window defoggers, tinted glass and a trip odometer. There are even low-fuel and door-ajar lights

to warn you of problems.

Nova. Because your transportation should have the same zest for living as you do.



Nova Hatchback Sedan.



## Cavalier. The Hot One's Even Hotter.

Cavalier Z24 Coupe.



In today's wonderfully competitive market, Chevrolet Cavalier is the best-selling car in America. Precision assembly methods, refined road manners and zesty performance have sent Cavalier to the very top of the sales charts.\*

Cavalier's always been fun to drive, and this year that fun takes on new dimensions with the RS series. The standard F41 suspension† gives RS the feel of a sport sedan, while the 2.0

Liter engine with Electronic Fuel Injection gives it the response. The RS is available in all five Cavalier body styles, including a convertible.

Here are additional reasons why Cavalier is number one on the charts: the affordable base coupe, sedan, and station wagon models. In the popular CS 4-Door Sedan version, Cavalier offers an ingenious combination of big-car appointments and room for five adults in a trim, practical design. The family-pleasing CS



Wagon and CS Hatchback models, with standard fold-down rear seat, deliver more cargo capacity than many full-size sedans.

Then, for those enthusiasts who want it all, we've built an inspired new Cavalier called Z24. In a word, it's hot! Equipment includes 14" Eagle GT tires, "ground-effects" skirting all around, electronic instrumentation and a 4-speed manual transmission. The heart of Z24 is a 2.8 Liter V6

with Multi-Port Fuel Injection that's convinced it's a V8.

Cavalier for 1986. More reasons to choose the car that America has driven to the top.

*\*Based on figures compiled by Ward's Automotive Reports, January 1984-July 1985.*

*†F41 optional on RS convertible.*



Cavalier RS Convertible (above).  
Cavalier RS Wagon (below).

Cavalier RS 4-Door Sedan.



# Celebrity. Designed to Do Everything Well.

If you haven't been in the market for a new car lately, you're in for a pleasant surprise.

Celebrity, America's best-selling mid-size car.\*

A car with beautiful new styling for 1986. With front-drive traction and trim exterior dimensions.

But with room for up to six passengers. Plus impressive road feel, a huge 16.2-cu.-ft.

trunk and a wonderful ride.

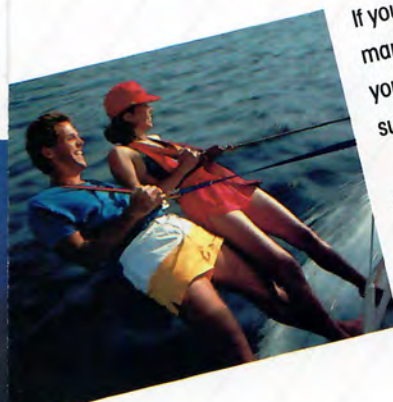
Celebrity's standard engine is a 2.5 Liter Tech IV powerplant with Electronic Fuel Injection that may amaze you with its responsiveness. Also available is a carbureted 2.8 Liter V6 and, for maximum output, the 2.8 Liter V6 with Multi-Port Fuel Injection.

And when you notice a certain surefootedness beyond the extremely smooth ride, remember that Celebrity features MacPherson-strut front suspension with integral

stabilizer bar, a trailing-arm rear suspension with coil springs and stabilizer and all-season steel-belted radial tires. Plus power rack-and-pinion steering and power front disc/rear drum brakes.

Whether you select the performance-oriented Eurosport, the value-packed sedan or coupe, or the versatile station wagon, we invite you to discover Celebrity and experience the refinement and balance achieved by a car designed to do everything well.

\*Source: Ward's Automotive Reports of Manufacturers' Reported Retail Deliveries of Passenger Cars Rated Mid-Size by the EPA, January 1984-July 1985.





Celebrity CL 55/45 Custom Interior.

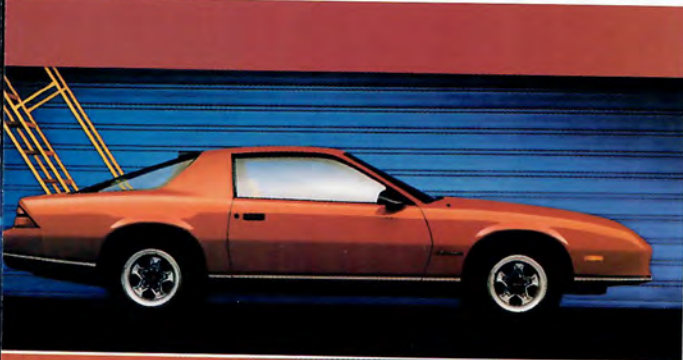


4-Door Sedan (above).  
Eurosport Wagon (center).  
Eurosport Coupe (below).

Eurosport 4-Door Sedan.



**Camaro Sport Coupe.**



**Camaro Z28.**

**Available 5.0 Liter V8 with Tuned-Port Fuel Injection.**







Camaro IROC Z28.

## Camaro. America's Performance Coupe.

We live in a golden age of automotive excitement. Recent developments in engines, aerodynamics, lightweight materials, suspensions and tires have made today's performance cars accelerate, brake and corner with a capability reserved for only the finest exotics a few years ago.

If you've followed these dramatic changes, you're

familiar with America's best-selling 2 + 2 sport coupe today. A car so beautiful, its shape is regarded by many styling experts to be one of the world's most successful designs. A car so balanced in so many ways it could only be called Camaro.

Camaro Z28 is a bold proclamation as to how far technology has come. Outstanding acceleration, transient response and lateral

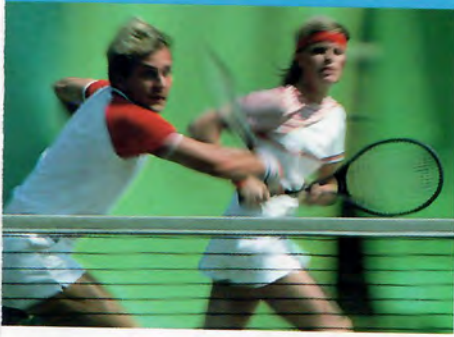
acceleration give this automobile the confidence and surety to run against some of the world's finest road machines.

The performance technology in Z28 has also been painstakingly applied to the other Camaro models. Whether you choose Z28, IROC Z28, Sport Coupe or Berlinetta, your automobile is engineered with the same unity of purpose, tuned to your

particular style of driving. Select the Camaro that's right for you.

Now you're ready to savor the exhilaration of a real driving machine.





# Monte Carlo. Personal Excitement, Classic Style.

Monte Carlo SS Sport Coupe.





**Monte Carlo CL 55/45 Custom Interior.**

**Monte Carlo Luxury Sport Coupe.**

*Monte Carlo LS not available at start of production. See your Chevrolet dealer for details.*

Discerning drivers will quickly recognize the contemporary flair and timeless elegance of the 1986 Monte Carlo Luxury Sport. Up front, newly sculptured metal and a beautiful new headlamp design combine aerodynamics with classic style. New wide lower body side moldings and a refined rear treatment also add to the visual excitement that defines Monte Carlo LS.

Yet this is functional beauty, in a car built to deliver performance and comfort worthy of its artful appearance. The energy comes from a 4.3 Liter V6 engine with Electronic Fuel Injection.

Inside, Monte Carlo LS surrounds you and your passengers with spacious, quiet comfort. Deeply padded seating

creates an atmosphere of luxury. A rich seat fabric is new for 1986. The available CL interior features a contoured 55/45 front seat that provides individualized comfort. For an even sportier flair, front bucket seats are optional.

Also available for 1986, the Monte Carlo Sport Coupe combines traditional Monte Carlo styling with the interior luxury of LS.

Performance enthusiasts, Chevy's still speaking your language. Monte Carlo SS is the street machine that's taken America by storm. Features include a 5.0 Liter High Output V8, a 4-speed automatic overdrive transmission, an F41 Sport Suspension and wide Eagle GT tires.





## Caprice. The Uncompromised Full-Size Car.

Caprice Classic Brougham interior.



Classic in style and fluid in motion—that's the new Caprice Classic for 1986. From its graceful grille to its bold tail lamps, from the standard full wheel covers to the aerostyle mirror, you'll admire the refinement of this enduring design.

Caprice Classic's celebrated ride has also been improved this year. Shock absorber refinements help smooth out rough road surfaces, while more effective acoustic materials provide a new sense

of quiet. Standard power is provided by a responsive 4.3 Liter V6 with Electronic Fuel Injection.

A look inside the 1986 Caprice Classic reveals the tasteful spaciousness that's the secret of this car's success. The expansive seats, newly styled and covered in rich fabrics, promise comfort for six adult passengers. When it comes to matching Caprice Classic's leg, head and shoulder room, most smaller cars don't even come close.



Whether your choice is the popular, 4-door sedan, the handsome 2-door coupe or the versatile 3-seat station wagon, you'll enjoy all the full-size virtues you've come to expect from Caprice Classic.

And this year there's a new luxury edition, Caprice Classic Brougham. This 4-door sedan features a full vinyl roof, special exterior trim and an extra-plush interior with a "pillow-design" 55/45 split front seat with pull-down

center armrest.

Also new for 1986 is the Caprice 4-Door Sedan, offering Caprice Classic-like comfort for less.

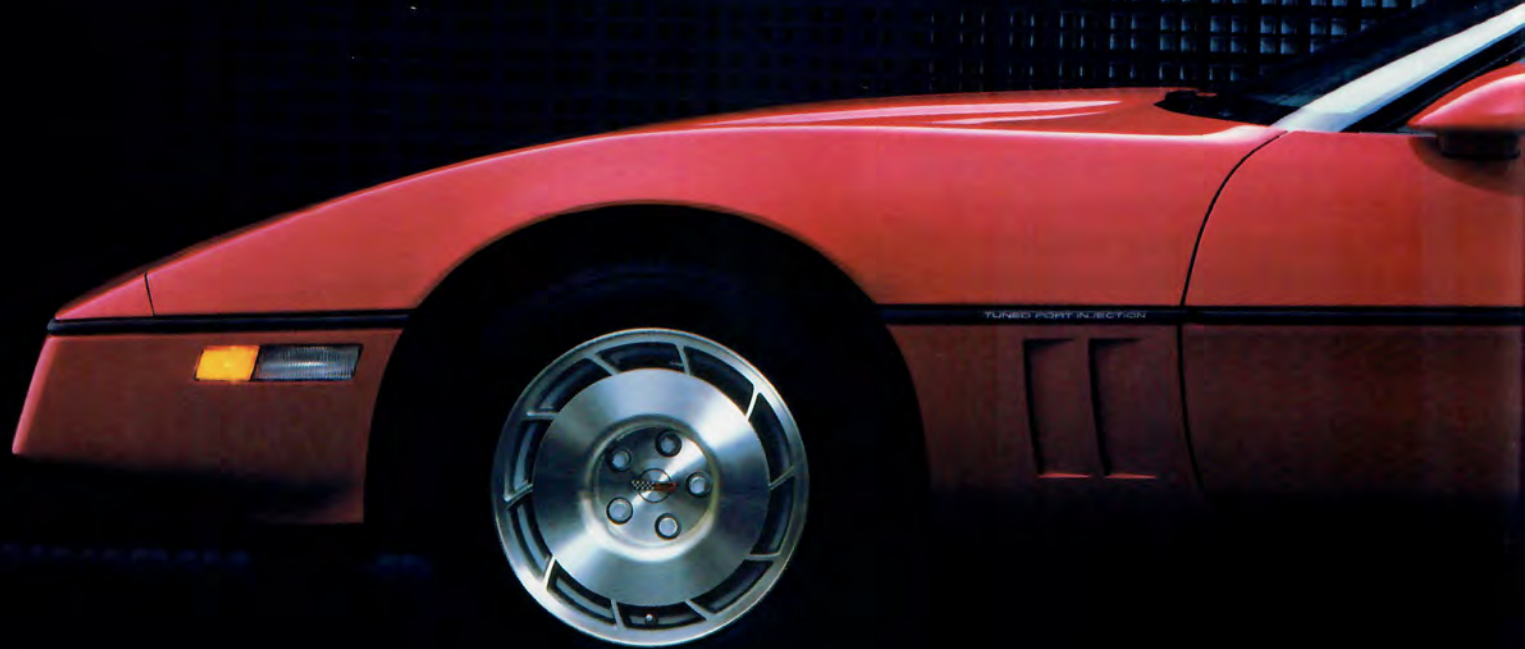
Caprice Classic and Caprice. These are the full-size cars that keep America coming back for more.



Caprice 4-Door Sedan (above).  
Caprice Classic Estate Wagon (below).

Caprice Classic Brougham 4-Door Sedan.





## Corvette. A World-Class Champion.

Corvette by Chevrolet. Since 1953, it has been America's sports car. And for 1986, it is the finest example yet of a proven world champion.

Proven on the racecourse, where '85 SCCA Showroom Stock competition was dominated by one car, Corvette. Proven in USAC-sanctioned performance testing, when a showroom-fresh '85 Corvette bested Ferrari, Lamborghini, Lotus and Porsche on the track.

Corvette is unquestionably exciting to look at. But to really experience the beauty of this machine, you must drive it. Feel the lusty 5.7 Liter V8 with Tuned-Port Injection that's capable of propelling Corvette from 0 to 60 in just 5.6 seconds. Experience the razor-sharp reflexes of a sophisticated suspension system that's as comfortable on the Interstate as it is on the race-track. Enjoy creature comforts you might not expect to find in a high-performance sports

car—air conditioning, AM/FM stereo, lift-off roof panel, Tilt-Telescopic steering wheel and much more—all standard.

And for 1986, Corvette adds another dimension to sports car driving with the introduction of Bosch ABS II, the anti-lock braking system that gives a new meaning to driving *control*. Bosch ABS II helps Corvette retain the edge that has made it one of the world's most advanced production sports cars.





Corvette Coupe.



Corvette Communication Center.

### A Word About Engines

Chevrolets are equipped with engines produced at facilities operated by GM car groups, subsidiaries or affiliated companies worldwide.

### Important Note:

Since the time of printing, some of this information may have been updated. Also, some of the equipment shown or described in this brochure is available at extra cost. The right is reserved to make changes at any time, without notice, in prices, colors, materials, equipment, specifications and models. Check with your Chevrolet dealer for complete information before ordering.

**Let's get it together...buckle up.**



TODAY'S CHEVROLET. LIVE IT

PLACE  
POSTAGE  
HERE

