

THE 1997 CHEVROLET
BLAZER



LIKE A ROCK





Door Blazer LT 4x4 with optional Custom Two-Tone. Shown in Emerald Green Metallic and Quicksilver Metallic with aftermarket ski rack.

A LITTLE BIT OF SECURITY IN AN INSECURE WORLD

We started with a rugged Chevy truck chassis. Then we added comfort, roominess, safety and an abundance of style. The result is Chevy Blazer. With its exclusive Driver Control System,* Blazer gives you the security and peace of mind you need in an insecure world. And it does so with confidence and ease. Blazer is a sport utility like no other. And that's because it's from Chevy Truck — the most dependable, longest-lasting trucks on the road.†

*Excludes other GM products. †Dependability based on longevity: 1986-1995 full-line light-duty truck company registrations. Excludes other GM divisions.





Door Blazer LT All-Wheel Drive with optional white outline-lettered tires. Shown in Dark Cherry Red Metallic.

A WINNING COMBINATION

As the Official Vehicle of the U.S. Ski & Snowboard Team, Chevy Truck is committed to making it possible for more than 170 of our athletes to compete all over the world. With its dependable, long-lasting performance, Chevy Truck is the perfect match for the drive



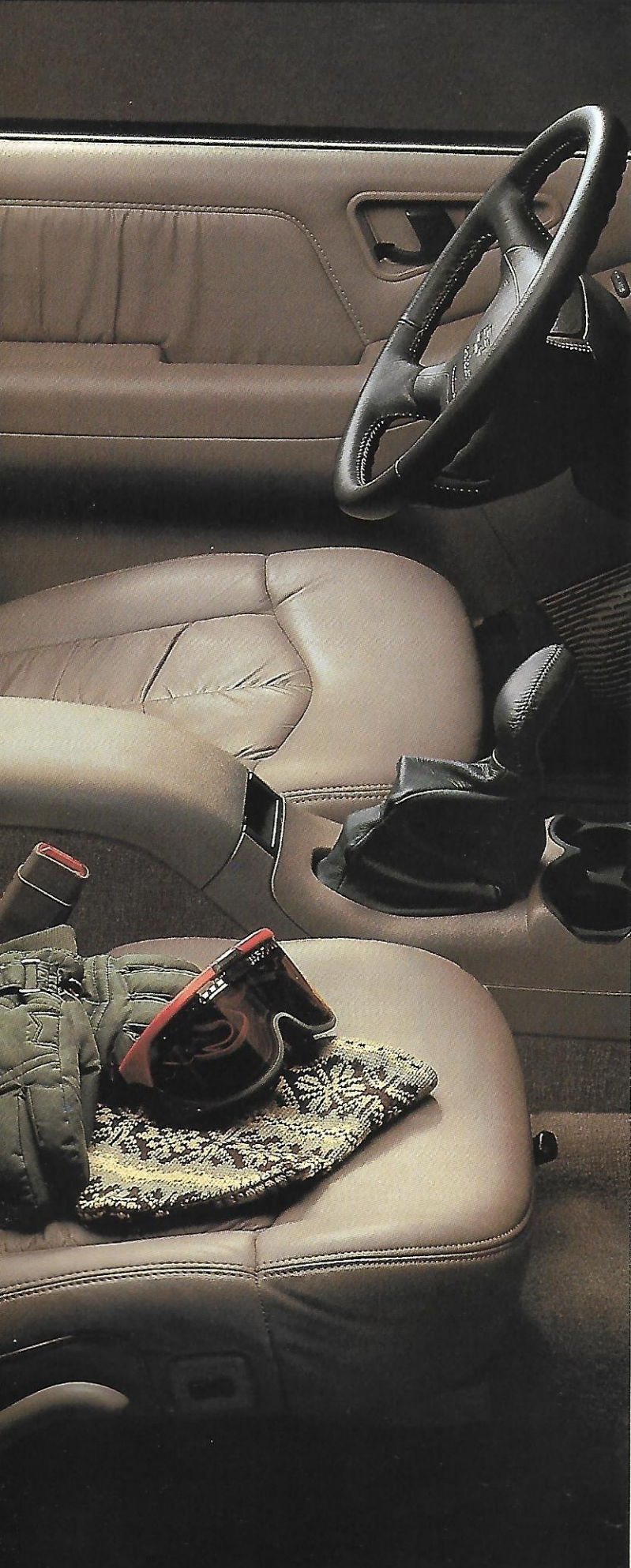
and determination of the U.S. Ski Team.

And that's why our partnership is a winning combination.





Door Blazer LT 4x4 interior with LT Custom Leather seating surfaces. Shown in Beige.



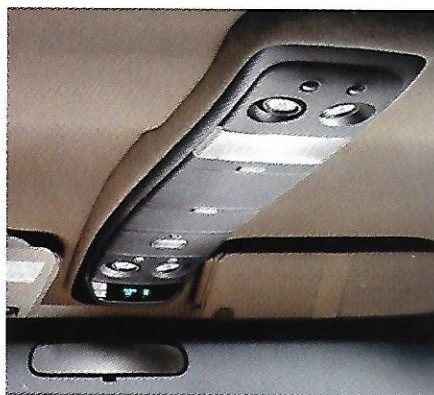
No matter where your journeys lead, Blazer rewards you with exceptionally luxurious accommodations. That's because the Blazer cabin is designed to be your personal haven from the world outside. Settle into supremely comfortable and supportive seats. Look around you and discover the many convenience features at your fingertips. For the ultimate in Blazer luxury, there's 4-Door Blazer LT, with its elegant Custom Leather seating surfaces and a host of premium features.

Blazer is filled with thoughtful touches that enhance the driving environment and make it an exceptionally refined traveling companion.



Remote Keyless Entry. Standard on 4-Door Blazer models with LT trim and optional on all models with LS trim. Remote Keyless Entry lets you lock or unlock doors and the rear liftgate or liftgate from up to 30 feet away, and also activates interior lighting.

HomeLink Transmitter. This new available feature allows you to program your garage door, electric gates or even your home's lighting/security systems into a permanently mounted transmitter located in your vehicle's overhead console.



Overhead Console.

Standard with LT trim and optional with LS trim's optional front bucket seats, the overhead console includes a compass, outside temperature display and dual reading lamps. It also houses the new HomeLink transmitter, which is included with LT trim and is available with LS trim. A mini console is included with the optional electric sunroof.



New Electric Sunroof.

All Blazer models can be equipped with the new optional electric sunroof. This tilt-and-slide design includes a wind deflector, sunshade and express-opening feature.



4x4 instrument panel. Shown with optional AM/FM stereo with compact disc player, push-button electric-shift transfer case control and additional options.



From the driver seat, the design of Blazer is focused on convenience and control. To ensure that you have what you need to navigate with ease, we designed an interior that is as functional as it is enjoyable. You'll find analog instrumentation that's easy to read and controls that are easy to reach. Abundant standard features cover the details. In every way, Blazer offers uncompromising attention to driver comfort and control. It may be more than you expect from a compact sport utility. But it's exactly what you expect from a Chevy truck.



Auxiliary Power Outlets.

Blazer with LS or LT trim includes two covered power outlets for electronic accessories. A third power source is provided by the lighter receptacle.

All-Wheel Drive.

Four-Door Blazer with LT trim features optional All-Wheel Drive (AWD), which includes new 4-wheel disc brakes. AWD provides enhanced security and control by sensing road conditions and automatically transferring torque to the front and/or rear wheels best able to provide traction.



Push-Button Insta-Trac 4x4.

The optional electric shift transfer case control lets you go into and out of 4-wheel drive at the push of a button. The Insta-Trac 4x4 system is the most relied upon 4x4 system on the road.*

*Based on total reported registrations of GM models using the Insta-Trac 4x4 systems vs. competitive 4-wheel-drive systems.



INTERIOR DIMENSIONS/CARGO VOLUME

INTERIOR DIMENSIONS (IN.)	2-DOOR	4-DOOR
Height of rear opening	31.0	31.0
Width of rear opening @ floor	47.9	47.9
Floor-to-ceiling height	34.5	34.6
Maximum cargo floor width	53.1	53.1
Cargo floor width at wheelwells	38.1	38.1
Load floor length to front seat ¹	63.8	70.6
Load floor length to rear seat ¹	28.5	35.2
CARGO VOLUME (CU. FT.)²		
Rear seat – with backrests up	30.2	37.3
Rear seat – with backrests folded down	66.9	74.1

¹ Measured at beltline. ² Measured floor to roof.



Door Blazer LT All-Wheel Drive with optional rear liftgate. Shown in Medium Beige Mystique Metallic.

OUTSTANDING VERSATILITY.

Part of what makes Blazer so special is its ability to provide the versatility and dependability you need, day in and day out. That's because we focused on the details of carrying people and cargo, and designed an interior that will accommodate both. A split-folding rear seat expands your cargo-carrying options even more by offering a variety of cargo and rear-passenger seating configurations. With the rear seat folded flat, a spacious cargo area is yours to fill. From people space to cargo space, the versatile Blazer meets your needs with confidence and style.



New Liftgate Design.

Optional on all 4-Door Blazer models, the new liftgate with integral liftglass provides easy access to the rear compartment. With this feature, all you need to do is lift the glass, not the entire tailgate.



New Easy Access To Rear Cargo Area.

A new optional liftgate with integral liftglass on 4-Door Blazer models ensures wide-open access to the rear cargo area for easy loading and unloading of cargo.



Liftglass/Dropgate.

The Blazer standard rear liftglass/dropgate is easy to open in tight locations and provides the versatility you need for the life you lead.



Convenience And Security.

Blazer 4-Door with LS or LT trim levels features a convenience net and pull-across privacy shade. These features are optional on the 4-Door with Base trim and on 2-Door models with available LS trim and outside tire carrier.



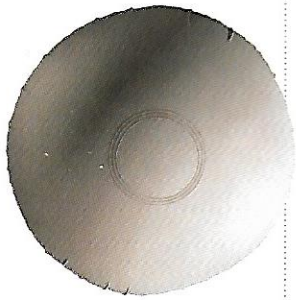
Door Blazer LS 4x4 with optional white outline-lettered tires. Shown in Apple Red.

SAFETY AND SECURITY, WHEREVER YOU GO.

Chevy Blazer includes an abundance of standard safety and security features. Each is part of a comprehensive safety system designed to add peace of mind to every mile you travel. The features listed here are included on every 1997 Blazer, except as noted.

OCCUPANT PROTECTION.

- Supplemental Inflatable Restraint: driver and right front-passenger manual lap/shoulder safety belts, and driver air bag
- Manual lap/shoulder safety belts, outboard rear-seat positions
- Manual lap safety belts, center-seat positions
- Energy-absorbing steering column
- Energy-absorbing instrument panel
- Interlocking door latches
- Folding front seatback locks, inertia type (2-Door models)
- Safety armrests
- Breakaway inside rearview mirror
- Security door locks and door-retention components
- Child security rear-door locks (4-Door models)
- Child comfort guides, rear outboard shoulder safety belts
- Power window master lockout (4-Door models with power windows)
- Laminated windshield glass, urethane-bonded
- Head restraints, front seats
- Side-door beams
- Safety belt use reminder system
- Tempered safety glass, side and rear windows
- Dual sunvisors
- Pressure-lock radiator cap.



Standard Driver Air Bag.

Every Blazer model features a standard driver air bag to help reduce injury in certain moderate to severe frontal collisions. Always wear safety belts, even with air bags.

Child Security Rear-Door Locks.

When activated, standard child security rear-door locks on 4-Door models prevent rear-seat passengers from inadvertently opening the rear doors from the inside.



Side-Door Beams.

Double-wall steel doors are reinforced with structural steel beams designed to help prevent intrusions into the passenger compartment during shallow-angle side collisions.

CRASH AVOIDANCE.

- Four-wheel anti-lock brake system (ABS)
- Brake/transmission shift interlock
- Automatic Daytime Running Lamps
- Front disc brakes with audible wear indicator (four-wheel disc brakes with All-Wheel-Drive option)
- Side-marker lamps and reflectors
- Parking lamps
- Four-way hazard-warning flashers
- Backup lamps
- Directional signal control
- Center high-mounted stoplamp
- Windshield defrosters, washer and multi-speed wipers
- Side-window defoggers, front
- Outside rearview mirrors
- Brake system with dual master cylinder plus warning light
- Starter safety switch
- Dual-action hood latch
- Tinted glass windshield
- Low-glare finish — inside windshield moldings, wiper arms and blades, inside rearview mirror frame and bracket
- Illuminated heater and defroster controls
- Tires with built-in tread-wear indicators
- Safety road wheel rims
- Inside day/night mirror.

THEFT DETERRENCE.

- Remote hood release
- Visible vehicle identification number
- Laser-etched VIN plate
- Laser-etched VIN on: engine, transmission, right and left fenders, all doors, front and rear bumper, and left and right side assemblies
- Theft-deterrent steering column lock
- Theft-deterrent key-locking system
- Single 2-sided key system
- Ignition key removal audible reminder.



Automatic Daytime Running Lamps.

During daytime driving situations, reduced-intensity low beam headlights come on automatically to alert other roadway users to your oncoming vehicle.



Door Blazer LS ZR2 4x4. Shown in Apple Red.

OFF-ROAD ADVENTURE STARTS HERE.

Serious off-road adventure begins with the new Blazer ZR2. The distinctive ZR2 Wide-Stance Sport Performance Package for 2-Door Blazer LS 4x4 includes a unique chassis with a 4-inch-wider tread, reinforced frame, and the ZR2 firm ride suspension that's specially tuned for the true off-road enthusiast. The aggressive Blazer ZR2. It's Blazer ruggedness and performance — to the extreme.





POWERTRAIN SPECIFICATIONS

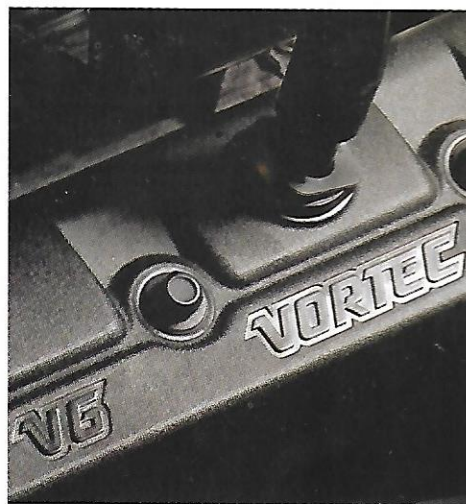
ENGINE	VORTEC 4300 V6 SFI ¹ (RPO L35)
Displacement (liters/cu. in.)	4.3/262
SAE Net HP @ rpm	190 @ 4400
SAE Net Torque (lb.-ft.) @ rpm	250 @ 2800
TRANSMISSION AVAILABILITY	
2-Door	
— 5-Speed OD Manual	O
— 4-Speed OD Automatic ²	S
4-Door	
— 4-Speed OD Automatic ²	S

S — Standard. O — Optional.

¹ Sequential Fuel Injection. ² Electronically Controlled.

THE CONFIDENCE OF VORTEC POWER.

Blazer drivers proceed with confidence, knowing they have reliable Vortec power under the hood. The Vortec 4300 V6 is engineered to deliver the dependable, long-lasting durability and reliability that legions have come to expect from Chevy Truck. It provides the power and torque you need to haul, tow and pass. And its smooth, quiet operation ensures miles of driving satisfaction. With its uncompromising blend of power, efficiency and dependability, the Vortec 4300 V6 engine makes Blazer quite a performer.



Standard Vortec Power. Every Blazer model is powered by a Vortec 4300 V6 — the largest displacement V6 engine available in any truck.



100,000-Mile Maintenance.

Platinum-tip spark plugs help Vortec engines travel 100,000 miles before their first scheduled tune-up.* And the recommended engine coolant change interval is now 150,000 miles or five years, whichever comes first.*

*Maintenance needs vary with different uses and driving conditions. See your owner's manual for more information.



Enhanced Automatic Transmission.

Standard in all models, the Blazer 4-speed electronically controlled automatic overdrive transmission has been enhanced to improve output and efficiency. A 5-speed manual is available in 2-Door models only.

OBD II ... An Early Warning System For Your Powertrain. Standard on every 1997 Chevy truck, OBD II (On-Board Diagnostics Second Generation) constantly monitors emissions system operation and can direct service personnel to potential problems before they affect vehicle performance.



Maximizing Fuel Economy.

Sequential Fuel Injection (SFI) ensures precise, high-pressure fuel delivery to each cylinder, making the most efficient use of every drop of gasoline.



Blazer LT 4x4. Shown in Medium Beige Mystique Metallic.

THE CONFIDENCE OF AN EXCLUSIVE DRIVER CONTROL SYSTEM.*

You never know what challenges await on the road ahead. And so, we designed the Blazer Driver Control System. This exclusive system* gives you an enhanced sense of control on any road, in virtually any driving condition. At the heart of the system is a group of premium suspension components that are precisely tuned to work together and deliver an exacting balance between a quiet, smooth ride and impressive handling. Power-assisted variable-ratio steering combines luxury car steering ease at low speeds with quick, sure response at higher speeds. A heavy, steel ladder-type frame is boxed for most of its length to provide impressive rigidity, contributing to a smooth ride. The Blazer Driver Control System. It's all about providing a little security in an insecure world.

*Excludes other GM products.

Rear Urethane Jounce Bumpers.

Large rear urethane jounce bumpers virtually eliminate suspension-to-frame contact, cushion suspension rebound and help absorb rolling impact when rear springs engage, for a smoother ride.

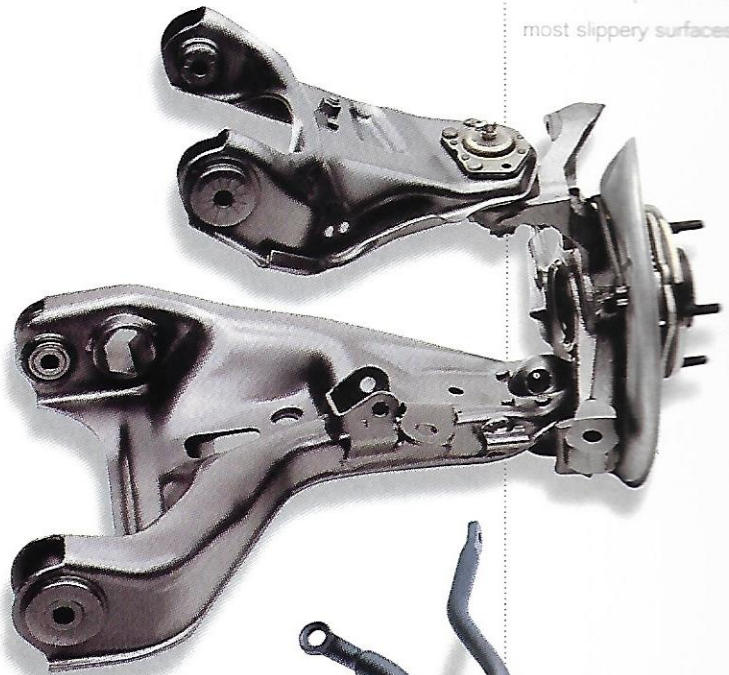


Specifically Tuned Tires.

All-season radial-ply tires, designed specifically for Blazer, handle dry, wet and snowy conditions, and provide a smooth and quiet ride in both 2WD and 4x4 models.



Lock Brake System (ABS).
Four-wheel ABS helps keep you in control by minimizing wheel lockup and skidding on most slippery surfaces.



Independent Front Suspension (IFS).

This rugged and reliable second-generation IFS, with its short/long arm design, provides smoothness and control, enabling the front wheels to virtually step over bumps independently.



Front and Rear Stabilizer Bars.

Large-diameter drop-link stabilizer bars help keep you in control by reducing body lean and sway when cornering.

SMOOTH RIDE SUSPENSION.

Ideal for everyday driving, the standard Blazer suspension combines a comfortably soft ride with impressive handling. Available optional suspension packages allow you to fine-tune driving response to meet your needs.



4-Door Blazer 4x4 with Standard Smooth Ride Suspension, shown in Quicksilver Metallic.

PREMIUM RIDE SUSPENSION.

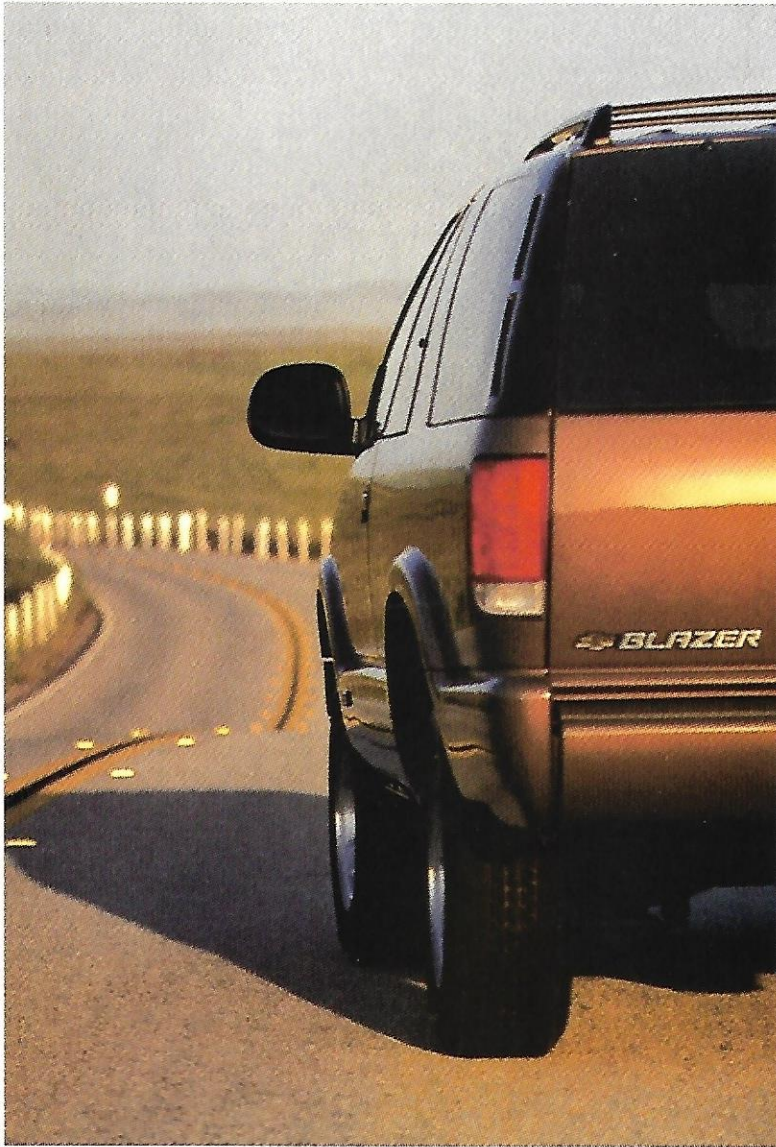
Available only on 4-Door models, this impressively smooth suspension delivers a car-like ride and surefooted agility. This is achieved through the orchestrated interaction of premium Bilstein gas-charged shock absorbers, soft-rate springs and additional suspension refinements.



4-Door Blazer LT 4x4 with Premium Ride Suspension, shown in Dark Cherry Red Metallic.

TOURING RIDE SUSPENSION.

Designed for the true driving enthusiast and available on 2-Door and 4-Door Blazer, this suspension utilizes gas-charged monotube Bilstein shock absorbers and firm spring rates to provide a taut, well-controlled ride. Best of all, this crisp response comes without the ride harshness typically associated with traditional sport-tuned suspensions.



2-Door Blazer LS 4x4 with Touring Ride Suspension, shown in Medium Beige Mystique Metallic.

4x4 OFF-ROAD SUSPENSION.

Available only on 2-Door Blazer 4x4, this package includes extra-large 46mm Bilstein high-pressure gas-charged shocks, designed to provide exceptional control while keeping their cool in the heat of serious off-road action. Tuned for off-road use, this suspension delivers a very firm ride.



2-Door Blazer LS with 4x4 Off-Road Suspension, shown in Fairway Green.

NOTE: Please refer to page 13 for information on the special ZR2 Wide-stance Sport Package available only on 2-Door Blazer 4x4.



Door Blazer 4x4 with optional luggage carrier. Shown in Light Blue Metallic.

DEPENDABILITY THAT GOES THE DISTANCE.

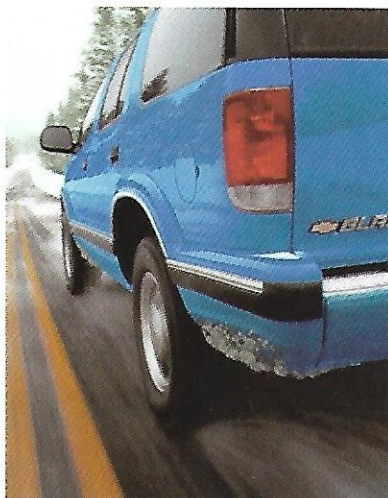
Once you bring Blazer into your life, it's easy to see how the Chevy Truck family earned their reputation as the most dependable, longest-lasting trucks on the road.* In every way, Blazer is built to last. With its strong, rugged construction and unwavering attention to detail throughout, Blazer rewards you with quality and dependability, season after season. It's all about confidence, security and peace of mind — and it's why so many Chevy truck owners stay Chevy truck owners.

*Dependability based on longevity: 1986–1995 full-line light-duty truck company registrations. Excludes other GM divisions.



Stainless-Steel Exhaust System.

Made of corrosion-resistant, aluminized stainless steel, the Blazer muffler and exhaust system are designed to provide long-lasting durability.



Corrosion-Resistant Exterior.

Two-side-galvanized steel exterior body panels (except the roof) virtually eliminate the corrosion that results from surface scratches and stone chips.



Scotchgard™ Protector. Cloth seat fabrics, cloth door panels and carpeting are mill-treated with stain-resistant Scotchgard™ Protector to help make cleanups quick and easy.





Door Blazer 4x4 with optional luggage carrier and cast-aluminum wheels. Shown in Summit White.


Your complete satisfaction with your Chevy truck — from the day you buy it to the day you sell it — is what Genuine Customer Care is really all about. It means we'll be here when you need us. That's a promise.

Genuine Customer Care is a comprehensive owner protection program that includes the following:

BUMPER TO BUMPER

WARRANTY.

The GM 3-year/36,000-mile (whichever comes first) limited warranty covers repairs for all 1997



Chevy Blazer models, including labor and parts, to correct any defects in material or workmanship occurring during the warranty period. The complete vehicle (including tires) will be covered for 3 years or 36,000 miles, whichever comes first. Supplemental Inflation Restraint system coverage is 3 years, regardless of mileage.

There is also emissions control system coverage, which varies by geographical region. *There is no deductible.* See your Chevrolet dealer for terms of this limited warranty.

24-HOUR ROADSIDE ASSISTANCE.

Lost? We'll help you find your way. Locked out? We'll get you back in your truck. Out of gas? We'll get you gas. Roadside Assistance is provided through



a toll-free number (1-800-CHEV-USA) 24

hours a day, 365 days a year.

Roadside Assistance offers two levels of service, Basic Care and Courtesy Care.

Roadside Basic Care provides:

- Free towing for warranty repairs (to closest dealer)
- Over-the-phone basic technical advice
- Available dealer services at reasonable costs (i.e., wrecker services, locksmith/key service, glass repair, etc.).

Roadside Basic Care covers you as long as you own your truck.

Roadside Courtesy Care provides all

of the features of Roadside Basic Care, plus:

- Free towing (to closest dealer)
- Free locksmith/key service (when keys are lost on the road or locked inside)

- Free flat tire change service and jump start

- Free fuel delivery on the road.

Roadside Courtesy Care is available to you for a period of 3 years or 36,000 miles (whichever comes first).

COURTESY TRANSPORTATION.

Customers who purchase or lease a 1997 Chevy Blazer are eligible for Courtesy Transportation (at no addi-



tional charge)

when their vehicles are left at a participating dealer for repairs covered under the 3-year/36,000-mile Bumper to Bumper limited warranty. Courtesy Transportation, at participating dealers only, may include expense reimbursement, shuttle service or vehicle rental. See your dealer for details.

CHEVROLET CUSTOMER SATISFACTION SYSTEM.

Local Chevrolet dealerships are vital links in our customer satisfaction system. At delivery, your Chevy salesperson will introduce you to your new truck and explain all warranties and maintenance schedules. Just as important, Chevrolet dealer service advisors and technicians are

highly trained and equipped with advanced diagnostic and repair equipment, helping to

ensure your long-term satisfaction. It's also good to know, when you travel long distances, that there are more than 4,400 Chevy dealers in the U.S.

A SPECIAL WORD ABOUT THE WORLD WE SHARE.

Chevrolet/Geo encourages you to join us in our commitment to help conserve the natural beauty and ecological health of the great American outdoors. We proudly support a number of conservation and restoration initiatives through our partnerships with non-profit organizations, such as the National Fish and Wildlife Foundation (NFWF), American Forests and others. To learn more about outstanding environmental programs, please call Chevrolet/Geo

Environmental toll free at

1-800-873-3436.





4-Door Blazer LT 4x4. Shown in Dark Cherry Red Metallic.

TRAILERING WITH BLAZER.

With its powerful, standard Vortec 4300 V6 SFI, electronically controlled 4-speed automatic over-drive transmission and designed-in Driver Control System, Blazer makes an outstanding tow vehicle. Trailering-related standard equipment includes a 6-wire trailer wiring harness, engine oil cooler, transmission oil cooler (except 2-Door with manual transmission), power brakes and a 100-amp alternator. The chart on this page will help you determine how to best equip your Blazer for towing.

NOTE: Please read the Trailering Caution safety information at right before trailering with your new vehicle.

TRAILERING CAUTION.

If you don't use the correct equipment and drive properly, you can lose control of your vehicle when you pull a trailer. For example, if the trailer is too heavy, your vehicle brakes may not work well — if at all. You and your passengers could be seriously injured. Pull a trailer only after taking the following steps:

TRAILER BRAKES.

If your trailer weighs more than 1,000 lbs. loaded, then it must have its own adequate brakes. Be sure to read and follow the instructions for the trailer brake controller so that it is installed, adjusted and maintained properly.

- Don't tap into your vehicle's brake system if the trailer's brake system will use more than 0.02 cu. in. of fluid from your vehicle's master cylinder. If it does, neither braking system will work well. You could even lose your vehicle brakes.

- The trailer brake parts must be able to take 3,000 psi of pressure. If not, the trailer brake system must not be used with your vehicle. If everything checks out this far, then have a

qualified individual make the brake fluid tap at the port on the master cylinder that sends fluid to the rear brakes. Don't use copper tubing, because it will bend and ultimately break. Use only steel brake tubing.

HITCHES.

It's important to have the correct hitch equipment. Crosswinds, large trucks going by and rough roads are just a few of the reasons why you'll need the right hitch. Here are some rules to follow:

- If you'll be towing a trailer that, when loaded, will weigh more than 2,000 lbs., be sure to use a frame-mounted, weight-distributing hitch and sway control of the proper size. This equipment is very important for proper vehicle loading and good handling when you're driving.
- If you have to make any holes in the body of your vehicle to install a trailer hitch, be sure to seal the holes if you ever remove the hitch. If they're not sealed, dirt, water and deadly carbon monoxide from the exhaust can get into your vehicle.

NOTE: The safety steps described here are by no means the only precautions to be taken when trailering. See the owner's manual for this Chevy truck of your choice for additional guidelines and trailering tips.

BLAZER TRAILERING DATA

2WD					
ENGINE	TRANSMISSION	AXLE RATIO	MAX. TRAILER WEIGHT (LBS.) ¹	MAX. TONGUE LOAD (LBS.)	MAX. GCWR (LBS.)
Vortec 4300 V6	Automatic	3.08	4500	550	8500
		3.42	5500	650	9500
	Manual ²	3.42	4000	500	8000
4x4					
ENGINE	TRANSMISSION	AXLE RATIO	MAX. TRAILER WEIGHT (LBS.) ¹	MAX. TONGUE LOAD (LBS.)	MAX. GCWR (LBS.)
Vortec 4300 V6	Automatic	3.08	4000	500	8500
		3.42	5000	600	9500
		3.73	5000	600	9500
	Manual ²	3.42	3500	450	8000
		3.73	4000	500	8500

¹ Maximum Trailer Weight is calculated assuming the driver and front passenger are in the tow vehicle and it has all required trailering equipment. The weight of additional trailer equipment, passengers, pets, and cargo in the tow vehicle should be subtracted from the Maximum Trailer Weight. ² Available only on 2-Door models.

NOTE: Check out, strongly recommended, the Blazer standard 4-speed electronically controlled automatic transmission for towing. • Any Blazer can tow a 2,000 lb. trailer without special equipment. • All vehicles towing a trailer rated over 2,000 lbs. require the special heavy-duty trailering equipment option (TRPO 282), which includes a weight-distributing hitch, a 6-wire trailer wiring harness and a heavy-duty trailer.

USING GCWRs (GROSS COMBINATION WEIGHT RATINGS) TO DETERMINE ENGINE, TRANSMISSION AND REAR AXLE RATIOS: You can use your desired GCWR (or capacity) to determine the powertrain you will require to tow a specific trailer with your Blazer. The last column to the right in the chart above shows the maximum allowable GCWR based on an engine, transmission and rear axle combination. The GCWR includes the total loaded weight of both the Blazer and the trailer.

Steel Wheel.

Standard on Blazer Base 2WD and Base 4x4 models — includes black hub cap and bright trim ring (4x4 wheel shown).



2WD Argent-Color Aluminum Wheel.

Included on Blazer 2WD models with optional LS or LT trim. Optional (RPO N60) on Base 2WD models.



4x4 Optional Special Aluminum Wheel.

Optional (RPO 5P2) on Blazer 4x4 models with optional LS trim.



4x4 Bright Aluminum Wheel with Medium Gray Accents.

Optional (RPO PA3) on 2 Door Blazer 4x4 models with optional LS trim.



4x4 Cast-Aluminum Wheel.

Included with LS trim on 2-Door 4x4 and 4-Door 4x4 models. Optional (RPO N90) on Base models.



4x4/AWD LT Cast-Aluminum Wheel.

Included with optional LT trim on Blazer 4 Door 4x4 and with optional All Wheel Drive.



MODEL SELECTOR

MODEL	GVWR (LBS.)	TRIM LEVEL		
		BASE	LS	LT
Blazer 2-Door 2WD	4450	S	O	—
Blazer 2-Door 4x4	4785 ¹	S	O	—
Blazer 4-Door 2WD	4850	S	O ²	O
Blazer 4-Door 4x4	5300	S	O ²	O

S — Standard. O — Optional. **1** 4,850-lb. GVWR with available RPO Z85 and ZM6. Ride/Suspension Packages. 4,950-lb. GVWR with available RPO ZR2. Ride/Suspension Package. **2** Includes Exterior Appearance Package features.

SUSPENSION CHOICES

2-DOOR BLAZER

RPO	DESCRIPTION	AVAILABILITY	TIRE SIZE	SHOCK ABSORBER SIZE (mm)	STABILIZER F/R DIA. (mm)
Z83	Smooth Ride	O — 2WD/4x4	P205/75R-15 ¹	32	33/23
Z85	Touring Ride	S — 2WD O — 4x4	P235/70R-15 ¹ P235/70R-15 ^{1,2}	46/36 ³ 46/36 ³	33/23 33/23
ZM6	Off-Road	O — 4x4	P235/75R-15 ⁴	46 ³	33/23
ZR2	Wide-Stance	O — 4x4	31x10.5R-15L	46 ³	33/23

4-DOOR BLAZER

RPO	DESCRIPTION	AVAILABILITY	TIRE SIZE	SHOCK ABSORBER SIZE (mm)	STABILIZER F/R DIA. (mm)
ZQ1	Smooth Ride	S—2WD/4x4	P205/75R-15 ¹	32	33/23
ZW7	Premium Ride	O — 2WD O — 4x4	P235/70R-15 ¹ P235/70R-15 ¹	46 ³ 46 ³	33/23 33/23
Z85	Touring Ride	O — 2WD O — 4x4	P235/70R-15 ¹ P235/70R-15 ^{1,2}	46 ³ 46 ³	33/23 32/23

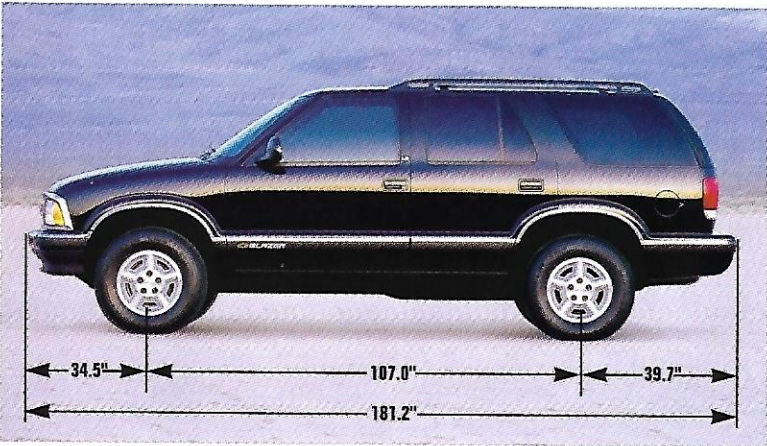
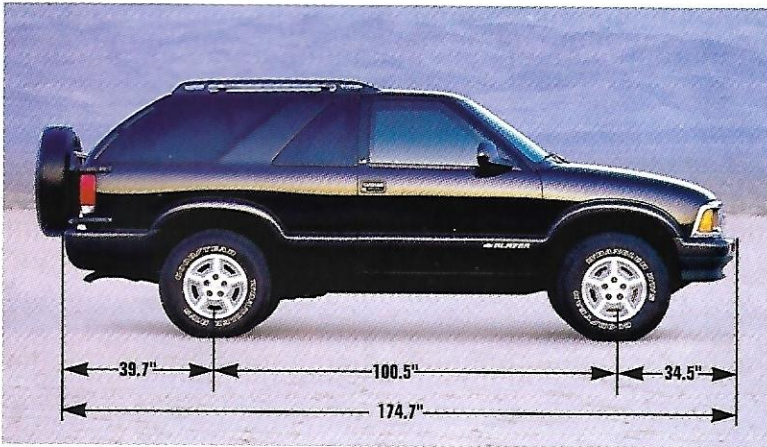
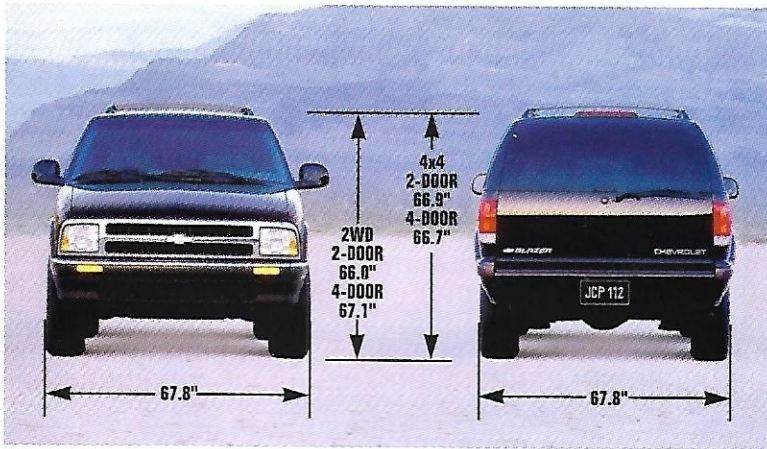
S — Standard. O — Optional. **1** All-season steel-belted highway radial-ply tires. **2** P235/75R-15 on/off road steel-belted radial-ply tires, optional. **3** Bilstern high pressure gas-charged mono-tube shock absorbers. **4** On/off road steel-belted radial-ply tires, includes full-size spare tire.

TWO-TONE



Custom Two-Tone paint (RPO ZY7 — available on 4-Door models only).

DIMENSIONS



PREFERRED EQUIPMENT GROUPS

These Preferred Equipment Groups make it easy to tailor Blazer to your exact specifications

TRIM LEVEL	BASE	BASE	LS	LS	LT
PREFERRED EQUIPMENT GROUP	1SA	1SB	1SC	1SD	1SE
Standard Body (with liftglass/droptgate) ¹	■	■	■	■	■
Convenience Group: Tilt-Wheel™ Adjustable Steering Column and electronic speed control with Resume Speed		■	■	■	■
Electric shift transfer case control (4x4 only)		■ ²	■ ²	■ ²	■
Luggage carrier		■	■	■	■
Radio: ETR AM/FM stereo with seek-scan, cassette player and digital clock ⁴		■	■	■	■
Seat: rear folding — standard on 4-Door 4x4		■	■	■	■
Suspension Package: Premium Ride (RPO ZW7) — 4-Door ³			■	■	■
Suspension Package: Touring Ride (RPO Z85) — 2-Door ³			■	■	■
Convenience Group: power door locks, power windows and electric remote exterior mirrors			■	■	■
Tires: P235/70R-15 blackwall, all-season ⁷			■	■	■
LS Trim (2-Door only)			■	■	■
LS Trim with Exterior Appearance Package ⁸ (4-Door only)			■	■	■
Console: overhead				■	■
Remote Keyless Entry				■	S
Seat: 6-way power driver				■	S
Seats: reclining high-back buckets with center floor shift console				■	S
LT Trim (4-Door only)				■	■
Air dam with foglamps (2WD only)				■	■
Tachometer				■	■
Radio: ETR AM/FM stereo with graphic equalizer, seek-scan, cassette player with auto-reverse and digital clock ⁴				■	■

■ — Included in Preferred Equipment Group. S — Standard with trim level required for Preferred Equipment Group.

¹ May upgrade to RPO TB4 rear liftgate/liftglass. ² May be deleted for credit. ³ May be deleted for credit or may be upgraded to RPO F46 All-Wheel-Drive chassis package. ⁴ Sound system upgrade allowed. ⁵ May substitute RPO Z85 Touring Suspension or RPO Z01 Smooth Ride Suspension. ⁶ May substitute RPO ZM6 Off Road Suspension or RPO ZF2 Wide-Scan Suspension Performance Package. ⁷ May substitute optional tires — see your Chevy Truck's dealer for details. ⁸ Includes Dark Gray body side moldings with bright trim inserts, bright wheel-scanning moldings and body-color bumpers.

STANDARDS AND OPTIONS

NOTE: A complete listing of safety features appears on page 11. Some individually available options listed may be included in, or be ordered only with, specific Preferred Equipment Groups. Some additional ordering restrictions may apply. Please see your salesperson for details.

NOTE: The trim features indicated reflect only a portion of the total content of each Blazer trim level. See your dealer for additional option availability.

TRIM LEVEL	BASE	LS	LT
SEATING - 2-DOOR			
Front high-back reclining buckets with manual lumbar support adjusters, convenience console with cup holder, passenger-side easy-entry feature and automatic transmission floor shift console ¹ — trimmed in Deluxe Cloth — trimmed in Premium Cloth	S —	— S	NA NA
Rear 50/50 split bench with independently folding backrests	O	S	NA
Seat adjuster, 6-way power driver	—	O ²	NA
SEATING - 4-DOOR			
Front 60/40 split bench with recliners, armrest with storage, cup holders on driver portion and seatback stowage — trimmed in Deluxe Cloth — trimmed in Premium Cloth	S —	— S	— —
Front high-back reclining buckets with manual lumbar support adjusters, convenience console with cup holders and automatic transmission floor shift console — trimmed in Premium Cloth	—	O	—
Front high-back reclining buckets with electric multi-function control, power lumbar supports, four-way manual adjustable front headrests, convenience console with cup holders and automatic transmission floor shift console — with Custom Leather seating surfaces	—	—	S
Rear 60/40 split bench with independently folding backrests	O ³	S	S
Seat adjuster, 6-way power driver	—	O ²	S
INTERIOR FEATURES			
Air bag, driver	S	S	S
Air conditioning (non-ozone-depleting R-134a refrigerant)	S	S	S
Assist handles: right-front passenger and rear-outboard passenger	S	S	S
Cargo tie-downs, rear compartment: 4	S	S	S
Coat hooks: LH and RH (plus two in cargo area in 4-Door)	S	S	S
Console: overhead (includes two stowage compartments, garage door opener compartment, four map reading lamps, dome lamp, electronic compass and outside temperature readout)	—	O ⁴	S
Convenience Group (includes power door locks, power windows and electric remote exterior mirrors)	O	S	S
Convenience Group (includes Tilt-Wheel™ Adjustable Steering Column and electronic speed control with Resume Speed)	O	S	S
Cup holders	S	S	S
Door trim panels: color-keyed molded plastic trim (include integral armrests and stowage pockets)	S	—	—

TRIM LEVEL	BASE	LS	LT
INTERIOR FEATURES (CONTINUED)			
Door trim panels: color-keyed molded plastic trim with soft-cloth upper insert (with LS trim) or simulated leather inserts (with LT trim)	—	S	S
Floor covering: color-keyed carpeting and carpeted floor mats	S	S	S
Glass: Solar-Ray tinted	S	S	S
Glass: deep-tinted rear-quarter windows, liftglass/liftgate window and, on 4-Door models, rear-door windows	—	S	S
Glass: rear-quarter window, swing-out	2-Door	S	NA
Headliner: color-keyed, cloth cover	S	S	S
Lights, interior: door and tailgate-operated dome and front-floor courtesy (with door-operated delayed-lighting feature)	S	S	S
Key-locking system: single two-sided key for ignition, doors and tailgate	S	S	S
Keyless Entry, Remote	—	O	S
Mirror: rearview, 10° day/night — with dual reading lamps	S —	— S	— S
Mirror: lighted visor, LH and RH	—	S	S
Net, cargo convenience	—	S	S
Scotchgard™ Protector on carpeting, cloth seats and cloth door trim	S	S	S
Shade, rear compartment: color-keyed, removable	2-Door 4-Door	— —	O ⁵ S NA S
Stowage boxes, rear-seat area (2)	2-Door	S	NA
Sunshades: padded, color-keyed cloth with elastic straps and RH vanity mirror	S	—	—
Sunshades: dual-blade padded, color-keyed cloth with elastic straps, extenders, and LH and RH lighted vanity mirrors	—	S	S
Transmitter: 3-channel programmable, HomeLink	O	O ⁶	S
INSTRUMENT PANEL			
Cigarette lighter: with lighted ashtray	S	S	S
Gauges: analog-type (include speedometer, trip odometer, fuel, voltmeter, coolant temperature and oil pressure)	S	S	S
Glove box (lighted)	S	S	S
Heater, with windshield and side-window defoggers and rear-area heat ducts	S	S	S
Pad, instrument panel: color-keyed	S	S	S
Power outlets: auxiliary 12-volt electrical (two, with hinged covers)	—	S	S
Steering wheel: deluxe 4-spoke	S	—	—
Steering wheel: leather-wrapped deluxe 4-spoke	—	S	S
Tachometer	O ⁷	O ⁷	S
Warning buzzers: headlamps-on	S	S	S

STANDARDS AND OPTIONS

TRIM LEVEL	BASE	LS	LT
------------	------	----	----

SOUND SYSTEMS BY DELCO ELECTRONICS

NOTE: All Blazer sound systems include a Delco Electronics Electronically Tuned Receiver (ETR) with AM/FM stereo and digital clock.

Radio: AM/FM stereo with seek-scan and digital clock (four premium speakers)	S	-	-
Radio: AM/FM stereo with seek-scan, cassette player and digital clock (four premium speakers)	O	S	S
Radio: AM/FM stereo with seek-scan, graphic equalizer and digital clock, plus cassette player with Search and Repeat (six premium speakers)	-	O	O
Radio: AM/FM stereo with compact disc player, includes automatic tone control, speed-compensated volume, preset-scan, CD random select, CD-in play/radio switching and TheftLock feature (six premium speakers)	-	O	O

EXTERIOR FEATURES

Air dam: front, color-keyed to front bumper color	S	S	S
Air dam: front, with foglamps	2WD	-	O
Bumpers: dark gray front and rear step with dark gray end caps	4x4	S	-
Bumpers: color-keyed to lower-body color	2WD	S	-
Bumpers: color-keyed with front rub strip	4-Door	-	S
Carrier, luggage: roof-mounted, black (200-lb. loading capacity)	O	S	S
Daytime Running Lamps, automatic	S	S	S
Liftglass/dropgate, rear	S	-	-
Liftglass/dropgate, rear: with Rear-Window Convenience Package (includes rear-window wiper, washer and defogger)	O	S	S
Liftgate with integral liftglass (includes rear-window wiper, washer and defogger)	4-Door	O	O
Grille: bright with sealed-beam halogen headlamps	2-Door 4-Door	S S	S NA
Grille: body-color with composite halogen headlamps	4-Door	-	S ¹
Mirrors: exterior, black, adjustable, below-eyeline, fold-away	S	S	S
Moldings: body-side and wheelhousing	4-Door	-	S
Striping, body	-	-	S
Sunroof, electric: with tilt-and-slide, wind-deflector shade and express-opening features	O	O	O
Wipers: intermittent	S	S	S

CHASSIS FEATURES

All-Wheel Drive: Chassis Package (includes All-Wheel-Drive system and 4-wheel disc brake system)	4-Door, 4x4	-	-	O ⁹
Alternator: 100-amp	S	S	S	

TRIM LEVEL	BASE	LS	LT
------------	------	----	----

CHASSIS FEATURES (CONTINUED)

Battery: Delco Freedom (525 cold-cranking amps)	S	S	S
Battery: Delco Freedom heavy-duty (690 cold-cranking amps)	O ¹⁰	O ¹⁰	O ¹⁰
Brakes, hydraulic — front disc/rear drum with vacuum power booster — front disc/rear disc with vacuum power booster	4-Door	S -	S O ¹¹
Brake system: 4-wheel anti-lock (ABS)	S	S	S
Cold Climate Package (includes 690 cold-cranking amps heavy-duty battery and engine block heater)	O	O	O
Differential, locking rear	O	O	O
Fuel tank — approx. 19-gal. capacity — approx. 18-gal. capacity	2-Door 4-Door	S S	NA S
Lamp, engine compartment	S	S	S
Shield Package: 4x4 only (includes transfer case and front differential skid plates, fuel tank and steering linkage shield)	O	O	O ¹²
Suspension, front: independent (2WD: coil springs; 4x4: torsion bar)	S	S	S
Suspension, rear: semi-floating rear axle with two-stage multi-leaf springs	S	S	S
Steering, variable-ratio power	S	S	S
Tools: mechanical jack with cover and wheel wrench	S	S	S
Tow hooks: two front (4x4 only)	S	S	S
Trailer wiring harness, light-duty (6-wire)	S	S	S
Trailer Special Equipment: heavy-duty (includes weight-distributing hitch platform, 8-wire trailer wiring harness and heavy-duty flasher)	O	O	O
Transfer case, manual shift (floor-mounted) (4x4 only)	S	O ¹³	O ¹³
Transfer case: with electric shift control (instrument panel-mounted) (4x4 only)	O	S ¹⁴	S ^{14, 15}

TIRES

NOTE: See Ride/Suspension Packages chart for tire size availability.

Tire, spare: with steel wheel — compact, mounted inside — full-size, mounted outside (includes cover)	2-Door	S	S	NA
— compact, mounted underbody	2-Door 4-Door	O S	O S	NA S

S — Standard. O — Optional. NA — Model not available with trim level.

NOTE: Tire chains should not be used on Blazers equipped with the following size tires because they could cause damage to the vehicle:

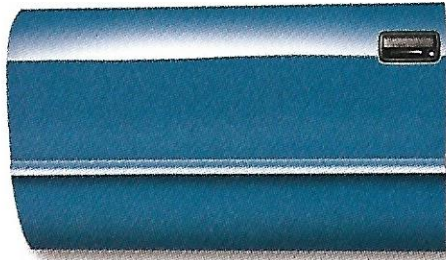
- P235/75R-15
- P235/70R-15
- 31"x10.5" R-15

1 Except with optional 5-speed manual transmission. 2 Requires optional LS trim. 3 Keyless Entry. 3 Standard on 4-Door optional 2WD Base 4-Door. 4 Requires optional high-back bucket seat. 5 Requires outside spare tire carrier (P16) and LS decal (RPO YC3) available only on 4x4 models. 6 Requires optional overhead console front bucket seat. 7 Required with 5-manual transmission (available on 2-Door only). 8 Color limited. 9 Bright chrome optional RPO ZY1 Custom Two-Tone. 9 Requires 4x4 model with LT trim and RPO ZW7 Premium Ride Suspension. 10 Not available with RPO V10 Cold Climate Package. 11 Included with All-Wheel Drive Package. 12 Not available with optional All-Wheel Drive. 13 Available credit option subtraction for push-button electric shift transfer case control. 14 Deleted for optional. 15 May be upgraded to All-Wheel Drive on 4-Door 4x4 with trim only.

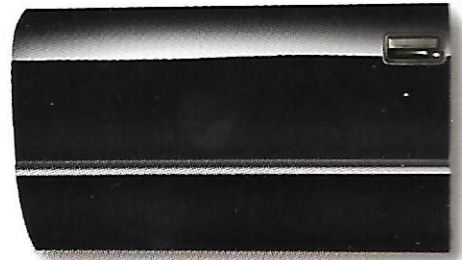
INTERIOR TRIMS

EXTERIOR COLORS

Custom Leather

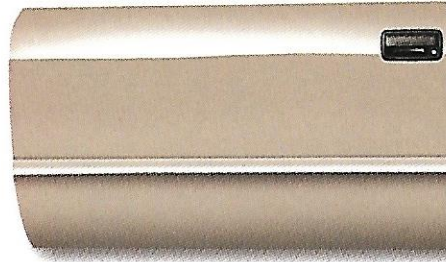


Light Blue Metallic*
Navy ■ Graphite ■ Gray ■



Onyx Black
Beige ■ Graphite ■ Gray ■

Premium Cloth



Light Autumnwood Metallic*
Beige ■ Graphite ■ Gray ■



Medium Beige Mystique Metallic
Beige ■ Graphite ■

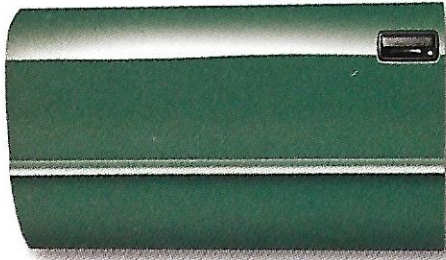
Deluxe Cloth



Dark Cherry Red Metallic
Beige ■ Graphite ■ Gray ■



Summit White
Beige ■ Navy ■ Graphite ■ Gray ■



Fairway Green*
Beige ■ Graphite ■ Gray ■



Emerald Green Metallic
Beige ■ Graphite ■ Gray ■



Quicksilver Metallic*
Navy ■ Graphite ■ Gray ■



Apple Red
Beige ■ Graphite ■ Gray ■

NOTE: Interior trims shown at left are available with exterior colors listed above. Trim color availability may vary with optional Two-Tone. Ask your Chevy Trucks dealer for full color and trim availability information.

Seat type and fabric availability are shown in the Standards and Options chart.

Interior color availability: Beige ■ Navy ■ Graphite ■ Gray ■

*Not available on 4 Door LT with solid exterior color. †Not available with LT trim.

PLEASE CONTACT US ...

For any additional information on 1997 Chevrolet Car, Truck or Geo products, call 1-800-950-2438 or visit us on the internet at <http://www.chevrolet.com>.

CUSTOMER ASSISTANCE CENTER.

The Chevrolet Customer Assistance Center has a special toll-free number (1-800-222-1020). It puts you in contact with experts who can handle any product or service questions you may have with your new Blazer.

SMARTLEASE BY GMAC.

SMARTLEASE by GMAC makes it easy to enjoy the excellence of Blazer. With SMARTLEASE, qualified customers can be approved in about one hour, and you'll enjoy low SMARTLEASE monthly payments. Plus, SMARTLEASE offers you choices



at the end of your lease. You can either buy your Blazer at a price guaranteed up front, or return your truck with no other obligations — providing the terms of the lease have been met. For more information about SMARTLEASE, SMARTBUY, or any of the other quality GMAC financing options, see your Chevy dealer or call 1-800-32-SMART.

TURN PLASTIC INTO STEEL WITH THE GM CARD®.

The GM MasterCard®, with no annual fee, is the revolutionary financial

vehicle specifically designed to help put you behind the wheel. When you use your GM Card, you'll receive 5%



GM Card Earnings on purchases good toward the purchase or lease of a new GM car or truck. It could mean saving hundreds, even thousands of dollars over and above any other discounts or rebates. Call 1-800-8GM-CARD for more information, including GM terms and conditions.

THE GM MOBILITY PROGRAM FOR PERSONS WITH DISABILITIES.

We invite your inquiries about the GM Mobility Program for Persons with Disabilities. The program will reimburse you up to \$1,000 toward any aftermarket driver or passenger adaptive equipment you may require for your 1997 Chevy Blazer, and can set up complete GMAC financing for you, too. The program can also provide you with a listing of area driver assessment centers and mobility equipment installers. See your Chevy dealer for more details or call this toll-free number for more information: 1-800-323-9935. Text telephone (TTY) users, call 1-800-833-9935.

UPDATED SERVICE INFORMATION.

Chevrolet regularly sends its dealers useful service bulletins about Chevrolet products. Chevrolet monitors product performance in the field.

We then prepare bulletins for servicing our products better. Now you can get these bulletins, too. Ask your dealer or, for ordering information, call toll free: 1-800-551-4123.

ASSEMBLY.

Chevrolet trucks are assembled by different operating units of General Motors, its subsidiaries or suppliers to GM worldwide. Chevrolet trucks incorporate thousands of components produced by different operating units of GM, its subsidiaries or suppliers to GM worldwide. We sometimes find it necessary to produce Chevrolet trucks with different or differently sourced components than originally scheduled. All such components have been approved for use in Chevrolet trucks and will provide the quality of performance associated with the Chevrolet name. Since some options may be unavailable when your vehicle is assembled, we suggest that you verify that your vehicle includes the equipment you ordered or, if there are changes, that they are acceptable to you.

ENGINES.

Chevrolet trucks are equipped with engines produced by different operating units of GM, its subsidiaries or suppliers to GM worldwide.

CORROSION PROTECTION.

Chevrolet trucks are designed and built to resist corrosion. All body sheet-metal components are warranted against rust-through corrosion for

6 years/100,000 miles (whichever comes first). Application of additional rust-inhibiting materials is not required under the corrosion coverage and none is recommended. See your Chevrolet dealer for terms of this limited warranty.

A WORD ABOUT THIS CATALOG.

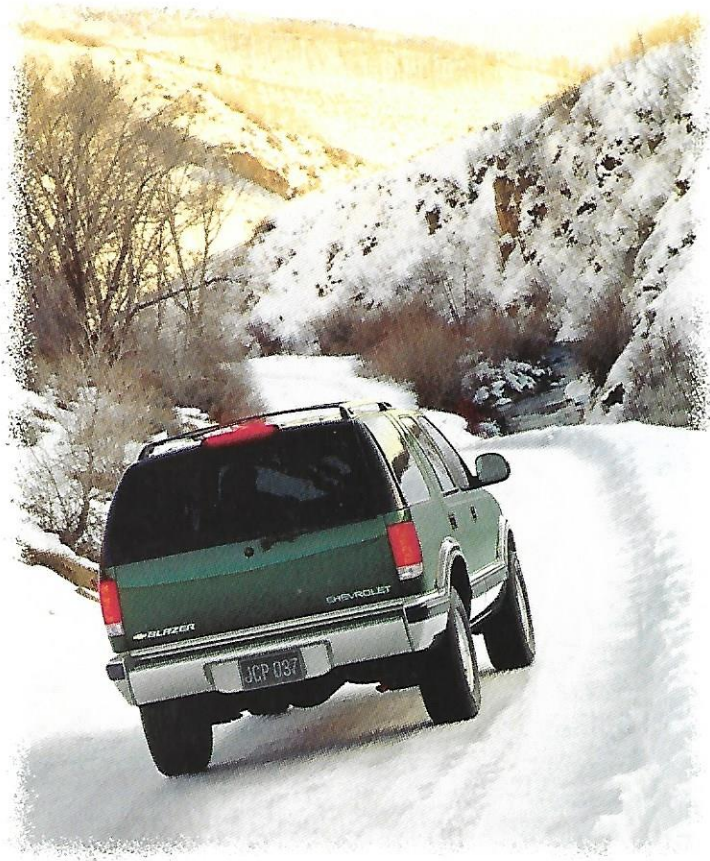
We have tried to make this catalog as comprehensive and factual as possible. We reserve the right, however, to make changes at any time, without notice, in prices, colors, materials, equipment, specifications, models and availability. Since some information may have been updated since the time of printing, please check with your Chevrolet dealer for complete details.

GM PROTECTION PLAN.

The available GM Protection Plan offers service protection in addition to that provided by GM's New Vehicle Limited Warranty. Ask your dealer about it. Coverage available only in the U.S. and Canada.

Chevrolet, the Chevrolet Emblem, Geo, General Motors, GM, the GM Emblem, Blazer, ETR, TheftLock, Insta-Trac, and Solar-Ray are registered trademarks and Chevy and Vertec are trademarks of the General Motors Corporation. GMAC, SmartLease and SmartBuy are registered trademarks of the General Motors Acceptance Corporation. "Sunshield" is a registered trademark of 3M. HomeLink is a registered trademark of the Prince Corp. ©1996 General Motors Corp. All rights reserved.





CHEVY TRUCKS