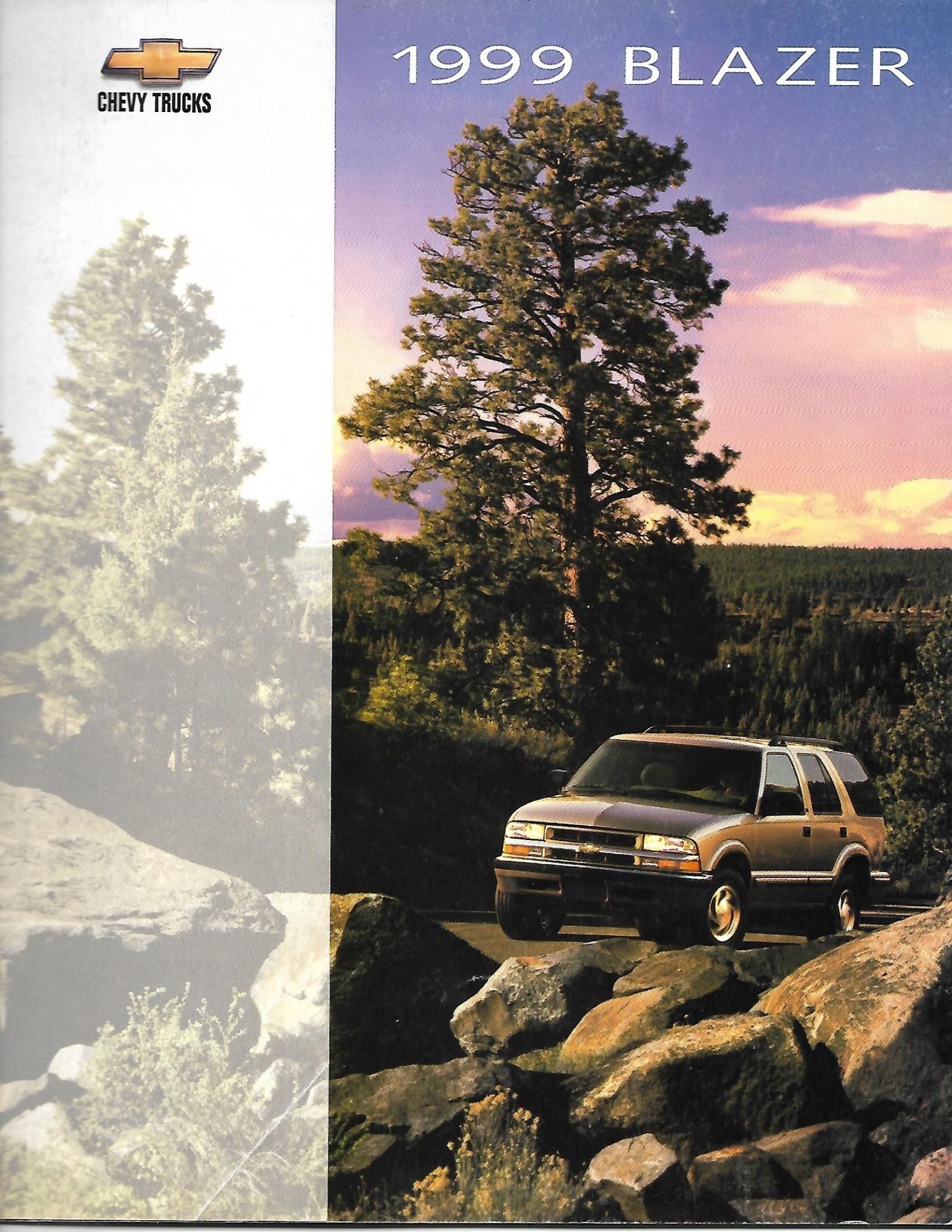




CHEVY TRUCKS

1999 BLAZER





**Blazer Goes To The Ends Of The Earth
To Bring You Driving Security.**

We drove the 1999 Chevy Blazer here to show how far it

will go to bring you driving control and security.

Blazer gives you confidence, security and peace of

mind — come rain, sleet, thunderstorms ... whatever.

For 1999, Blazer gives you even more driving confidence.

When the new Autotrac system is engaged on select Blazer 4x4

models, power is automatically transferred between the

front and rear wheels whenever rear-wheel slippage is detected.

And wherever you go, you can count on Blazer because it's a

Chevy Truck, the most dependable, longest-lasting trucks on

the road.* When it comes to driving security,

remember — as the picture shows — Chevy Blazer has been there.

*Dependability based on longevity: 1981–1997 full-line light-duty truck company registrations.

Excludes other GM divisions.





The Outdoors Is Full Of Reasons To Own One.

If you seek adventure, Chevy Blazer LT 4x4 is just the sport utility to take you there. Bring on those rugged trails and sharp inclines. This ground-grabbing Blazer gives you the confidence to handle them. An exact balance of ride and handling is attained by premium suspension components. You'll appreciate how Blazer gives you a high ground clearance for managing rock-strewn terrain. And for great styling, LT models come with a color-keyed grille, aluminum wheels and body striping. Chevy Blazer LT 4x4. It's every reason you need for your adventure into new territory.

4-Door Blazer LT 4x4 shown
in Light Pewter Metallic.

A photograph showing the interior of a vehicle, specifically the rear passenger area. The seats are upholstered in a light beige leather with a quilted pattern. The seatbelts are also beige. The door panel and interior trim are also in a matching beige color. A window on the right side shows a view of a beach and the ocean. The text "Luxuriously Appointed." is printed in the upper left corner.

Luxuriously Appointed.

4-Door Blazer LT interior with Custom
Leather seating surfaces. Shown in Beige.

Luxuriously Accommodating.

The great outdoors? Blazer LT reminds you how great it is to be inside, too. Its refined interior is filled with features that soothe you, while accentuating your individual lifestyle. There's plenty of room to stretch out and relax inside Blazer LT. Features such as front high-back reclining bucket seats with Custom Leather seating surfaces, an eight-way power driver seat and an electronic climate control are designed for optimum comfort. Rear 60/40 split-folding bench seats with Custom Leather seating surfaces let you bring along your outdoor gear — without giving up all your rear seating space. And there's plenty of convenient storage space for those odds and ends. In Blazer LT, luxury *is* accommodating.



Electric Sunroof Option.

Just push a button and enjoy the sun, moon and fresh air. A tilt-and-slide design includes a wind deflector, sunshade and express-opening feature.



Heated Front Bucket Seats.

For greater cold-weather comfort, choose the available heated driver and front-passenger bucket seats with two heat-level settings.

Deluxe Overhead Console.

The optional deluxe overhead console features an eight-point electronic compass, outside temperature display, dual reading lamps, HomeLink transmitter and trip computer. The deluxe overhead console is included with LT trim.







Your Center Of Control.

Control and confidence. You get both behind the wheel of Chevy Blazer. It's the result of an intelligent design combined with a long list of driver-focused features. A high seating position in Blazer gives you a commanding view of the road. The instrument panel features analog gauges that are always easy to read, no matter what time of day (or night) it is. All major controls, including the new available redundant steering wheel radio controls, are within fingertip reach, too. Being firmly in control. It's one of the most appealing aspects of driving Blazer.



New Autotrac 4x4 System.

When Blazer is equipped with Autotrac and AUTO 4WD is selected, power is automatically transferred between the front and rear wheels whenever rear-wheel slippage is detected.



Blazer instrument panel shown with LT trim, with standard electronic automatic climate control and additional options.



Bose Six-Speaker Sound System With Cassette Or CD Player.

Enjoy concert hall sound reproduction with this new available GM-exclusive Delco Bose system.



Multiple CD Changer.

Mounted conveniently in the center console, this available new multiple CD changer holds up to six discs, and features multi-disc random play. Offered with most Blazer sound systems.



HomeLink Transmitter.

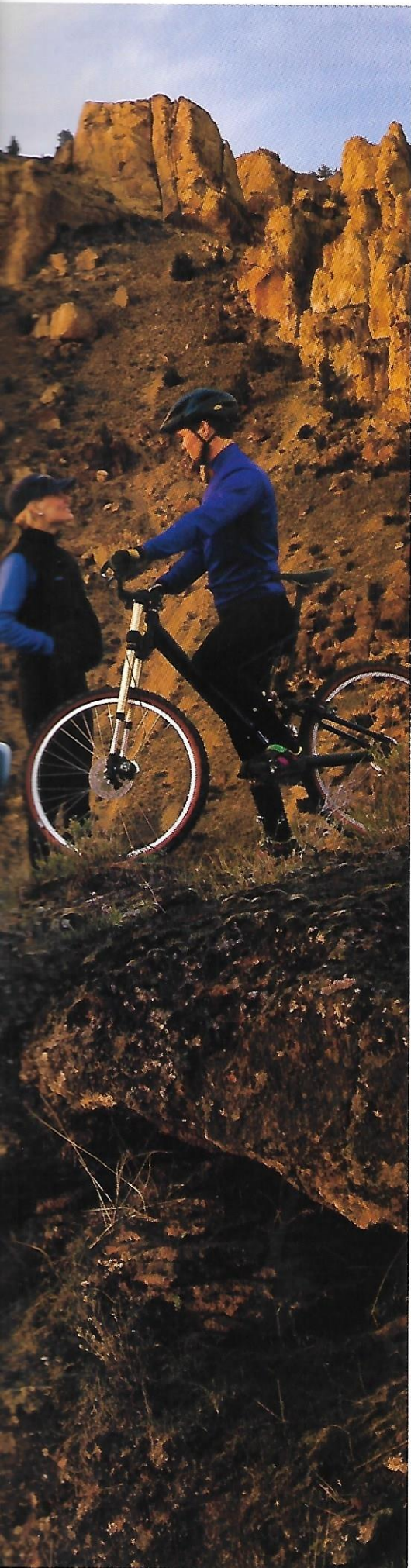
This standard LT feature lets you program up to three home functions (garage door, lighting system, etc.) into a permanently mounted console transmitter. Just imagine: there's no more fumbling with batteries and remote controls.



Remote Keyless Entry.

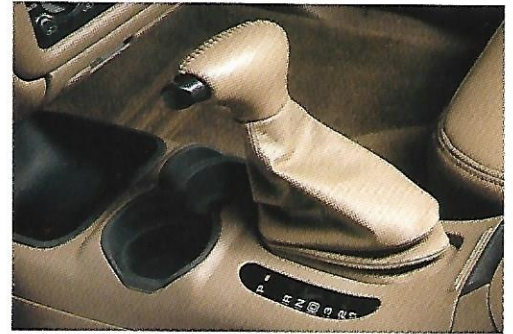
This feature, standard on LT, lets you lock or unlock doors and rear liftglass or liftgate from up to 30 feet away with the touch of a button.





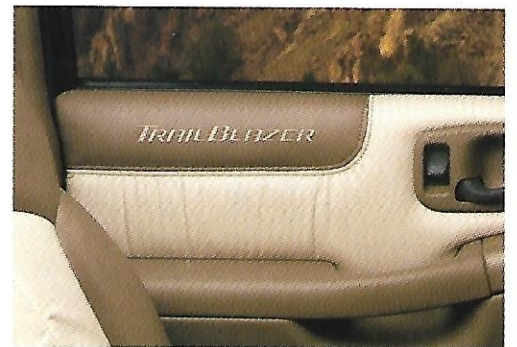
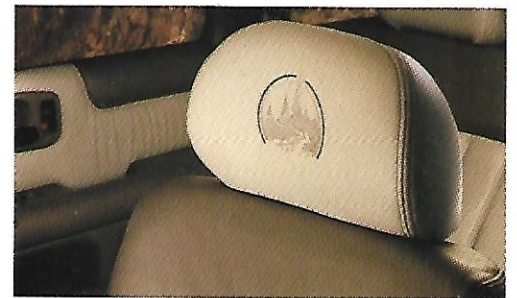
Blaze Your Own Trail.

In a world of look-alike sport utility vehicles, the new TrailBlazer, scheduled for availability late fall 1998, has a passion for exploration and individual style. On the road, a Z85 Touring Suspension Package provides a taut ride without the harshness typically associated with traditional sport-tuned suspensions. With its new monochromatic exterior, TrailBlazer stands out no matter where you take it. Inside, you'll find enhancements above and beyond Chevy Blazer LT. Like Two-Tone Beige Custom Leather seating surfaces featuring the TrailBlazer logo, a leather-trimmed steering wheel and shift knob, as well as distinctive floor mats. For some people, the only way to go from point A to point B is with style and imagination. Make a personal statement ... with Chevy TrailBlazer.



Leather-Wrapped Steering Wheel And Shift Knob.

For added comfort, TrailBlazer features a standard leather-wrapped steering wheel and floor-mounted leather-wrapped shift knob.

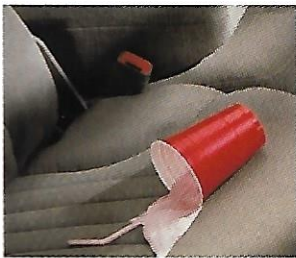


Distinctive Styling.

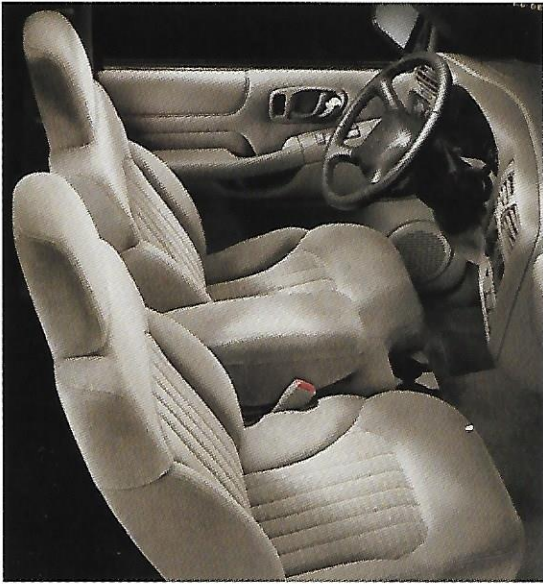
The head restraints in TrailBlazer include an embroidered logo while door trim panels feature the TrailBlazer name. These and other styling touches give the TrailBlazer interior a highly distinctive look.

For All The Times In Your Life.

An afternoon with the family. Helping friends move into their new home. A special evening on the town. Your life takes you in many different directions. Enter Blazer LS. We designed it to be highly versatile because you carry both people and cargo. When the standard 60/40 split rear seat is folded down, you have up to 74.1 cu. ft. of cargo room in 4-Door models. That's big enough to hold a large object like a washing machine box. Blazer LS is full of convenience features, too, such as power windows and door locks, a rear liftgate/liftglass and a Custom overhead console that includes an electronic compass and outside temperature display. For all the times in your life, Blazer LS is there.



Scotchgard™ Protection.
The fabric and carpet in Blazer features factory-applied Scotchgard™ protection. It allows these surfaces to repel most liquids, stains and dirt, while making them easy to clean.



Split-Bench Front Seats.
Available 60/40 split-bench Custom Cloth seats on 4-Door Blazer LS and Base include an armrest, storage compartment and dual cup holders.





4-Door Blazer LS 2WD in Dark Copper Metal

Center Armrest.

Included with the split-bench front seat, this center armrest includes convenient storage space for CDs, coins and other items. Two cup holders are included.

Blazer LS Versatility.

There's lots of room inside Blazer LS. That means there's room for everyone to tag along for those Saturday afternoons of errand-running.



For Your Rugged Adventure.

The order of the day is off-road adventure.

A rip-snorting, mule-kicking Blazer ZR2

4x4 is just the machine to help you do it.

It's loaded with specially engineered

components designed to put plenty of

distance between you and civilization.

The distinctive ZR2 Wide-Stance Sport

Performance Package on 2-Door Blazer

LS 4x4 includes a reinforced, wide-stance

chassis with numerous upgrades, 31" x

10.5" 75/R-15 on-road/off-road tires,

46mm Bilstein pressurized shock absorbers,

Underbody Shield Package and more.

Factor in the remarkable driving control of

Blazer, and you're ready to tame those

heart-quickenning switchbacks. Rough

terrain has finally met its match.

2-Door Blazer ZR2 4x4 in Victory Red.









There's Nothing Like Strong Performance.

When it comes to trailering, you need
a vehicle you can count on. Let Blazer

with its standard Vortec 4300 V6

FI engine and four-speed electronic

automatic overdrive transmission —

take a load off your mind. Properly

equipped, 2WD Blazer can tow up to

5,500 lbs. That's enough to take the

terrain vehicles with you on your

getaway. Trailering-related standard

equipment on Blazer includes an

integral step bumper with provisions

for a trailer ball, an eight-lead wiring

harness, engine oil cooler, transmission

cooler (except 2-Door with optional

manual transmission), power brakes

and a 100-amp alternator. Towing

strength. It's one of the many strong

points of Chevy Blazer.

2-Door Blazer LS 4x4 shown

with optional Two-Tone paint

in Meadow Green Metallic

and Sunset Gold Metallic.

shown with additional options.

TRAILERING BASICS

Towing a trailer involves all major vehicle systems of your Chevy truck, including powertrain, steering, suspension and brake systems. Easy and safe trailering requires a properly equipped vehicle, additional trailering equipment and an appropriate trailer. It also requires loading both the vehicle and trailer properly, using safe driving techniques, meeting regional legal requirements and following break-in and maintenance schedules. You are responsible for being sure you have the appropriate equipment and hitch for your specific trailering situation. If you plan to tow a trailer, consult your owner's manual and speak to a trailering expert at your Chevrolet dealership or visit our web site at www.chevrolet.com.

The following chart will assist in determining how to best equip your Chevy truck for trailering. To help you understand the chart, consider these trailering factors:

Torque: Indicates the strength of the engine. Low-end torque reflects how much force is generated to get your vehicle moving.

Horsepower: Indicates how much work the engine does at a certain engine speed. At mid- to high-engine rpm, it's what keeps you moving at highway speeds.

Axle Ratio: Along with your vehicle's transmission gears, a higher rear axle ratio contributes to how much available torque and horsepower (mechanical leverage) can be applied to the drive wheels for launch and uphill performance. Higher rear axle ratios, however, sacrifice fuel economy when not trailering.

Ball Hitch Trailering: There are two types of ball hitches. A weight-carrying hitch consists of a ball and coupler with no means to distribute the hitch weight. It is used primarily for lightweight trailers. Heavier trailers, however, require a weight-distributing hitch which uses spring bars to transfer some of the hitch weight forward onto the tow vehicle's front axle and rearward onto the trailer's axle(s).

GCWR:

The Gross Combination Weight Rating is the total allowable weight of the completely loaded vehicle and trailer including any passengers, cargo, equipment and conversion. A properly equipped tow vehicle and trailer at the maximum GCWR should be able to accelerate and merge with traffic, climb typical interstate grades at highway speeds, handle the combination on most road surfaces and stop adequately within a reasonable distance. The GCWR for your vehicle should not be exceeded.

A Note About Trailer Ratings: There is no industry standard for trailer weight ratings. Definitions vary by manufacturer. Chevrolet includes the weight of the most popular options as well as a driver and one passenger and required trailering equipment to ensure that trailering ratings are realistic. When comparing trailering ratings, please note that the competitor ratings may not consider the weight of optional equipment or the additional passenger, so comparisons may not be equivalent.

TRAILERING CAUTIONS

NOTE: Please read this Trailering Caution safety information before trailering with your new vehicle.

NOTE: The safety steps described here are by no means the only precautions to be taken when trailering. See the owner's manual for the Chevy truck of your choice for additional guidelines and trailering tips.

■ If you don't use the correct equipment and drive properly, you can lose control of your vehicle when you pull a trailer. For example, if the trailer is too heavy, your vehicle brakes may be less effective. You and your passengers could be seriously injured. Pull a trailer only after taking the following steps:

TRAILER BRAKES

If your trailer weighs more than 1,000 lbs. loaded, then it must have its own adequate brakes. Be sure to read and follow the instructions for the trailer brake controller so that it is installed, adjusted and maintained properly.

■ Don't tap into your vehicle's brake system if the trailer's brake system will use more than 0.02 cu. in. of fluid from your vehicle's master cylinder. If it does, neither braking system will work well. You could even lose your vehicle brakes.

■ The trailer brake parts must be able to take 3,000 psi of pressure. If not, the trailer brake system must not be used with your vehicle. If everything checks out thus far, then have a qualified individual make the brake fluid tap at the port on the master cylinder that sends fluid to the rear brakes. Don't use copper tubing because it will bend and ultimately break. Use only steel brake tubing.

HITCHES

It's important to have the correct hitch equipment. Crosswinds, large trucks going by and rough roads are just a few of the reasons why you'll need the right hitch. Here are some rules to follow:

■ If you'll be towing a trailer that, when loaded, will weigh more than 3,500 lbs., be sure to use a frame-mounted, weight-distributing hitch and sway control of the proper size. The equipment is very important for proper vehicle loading and good handling when you're driving.

■ If you have to make any holes in the body of your vehicle to install a trailer hitch, be sure to seal the holes if you ever remove the hitch. If they're not sealed, dirt, water and deadly carbon monoxide from the exhaust can get into your vehicle.



Rear Step-Bumper With Trailer Hitch.

Blazer has an integral rear step-bumper that includes provisions for a trailer ball and tongue weight capacity of up to 350 lbs. and a weight-carrying hitch limit of 3,500 lbs.

BLAZER TRAILERING DATA

NOTE: Your vehicle may require additional special equipment to tow the maximum trailer weights listed here. The weight-carrying hitch limit for Blazer is 3,500 lb. trailer with 350 lb. tongue weight. Weight-distributing hitch and sway control required over 3,500 lb. trailer weight.

2WD

ENGINE	TRANSMISSION	AXLE RATIO	MAX. TRAILER WEIGHT (LBS.) ¹	MAX. GCWR (LBS.)
Vortec 4300 V6	Automatic	3.08	4500	8500
		3.42	5500	9500
	Manual ²	3.42	4000	8000

4x4

ENGINE	TRANSMISSION	AXLE RATIO	MAX. TRAILER	MAX. GCWR (LBS.) LOAD (LBS.)
Vortec 4300 V6	Automatic	3.08	4000	8500
		3.42	5000	9500
		3.73	5000	9500
	Manual ²	3.42	3500	8000
		3.73	4000	8500

¹ Trailer ratings are calculated assuming the driver and one passenger are in the tow vehicle with all required towing equipment. Additional optional equipment, passengers or cargo may reduce trailer rating though ratings are calculated assuming most available optional equipment is ordered. ² Available only on 2-Door Blazer models.

NOTE: Trailer tongue weight should be 10 to 15 percent of total loaded trailer weight (up to 750 lbs.). Addition of trailer tongue weight cannot cause vehicle weights to exceed Rear Gross Axle Weight Rating (RGAWR) or Gross Vehicle Weight Rating (GVWR). These ratings can be found on the certification label located on the driver-side front door or door frame. Base cooling system includes all content required to attain maximum trailer rating. No optional cooling equipment available. Z82 Heavy-Duty Trailering Equipment Package includes weight-distributing hitch platform.

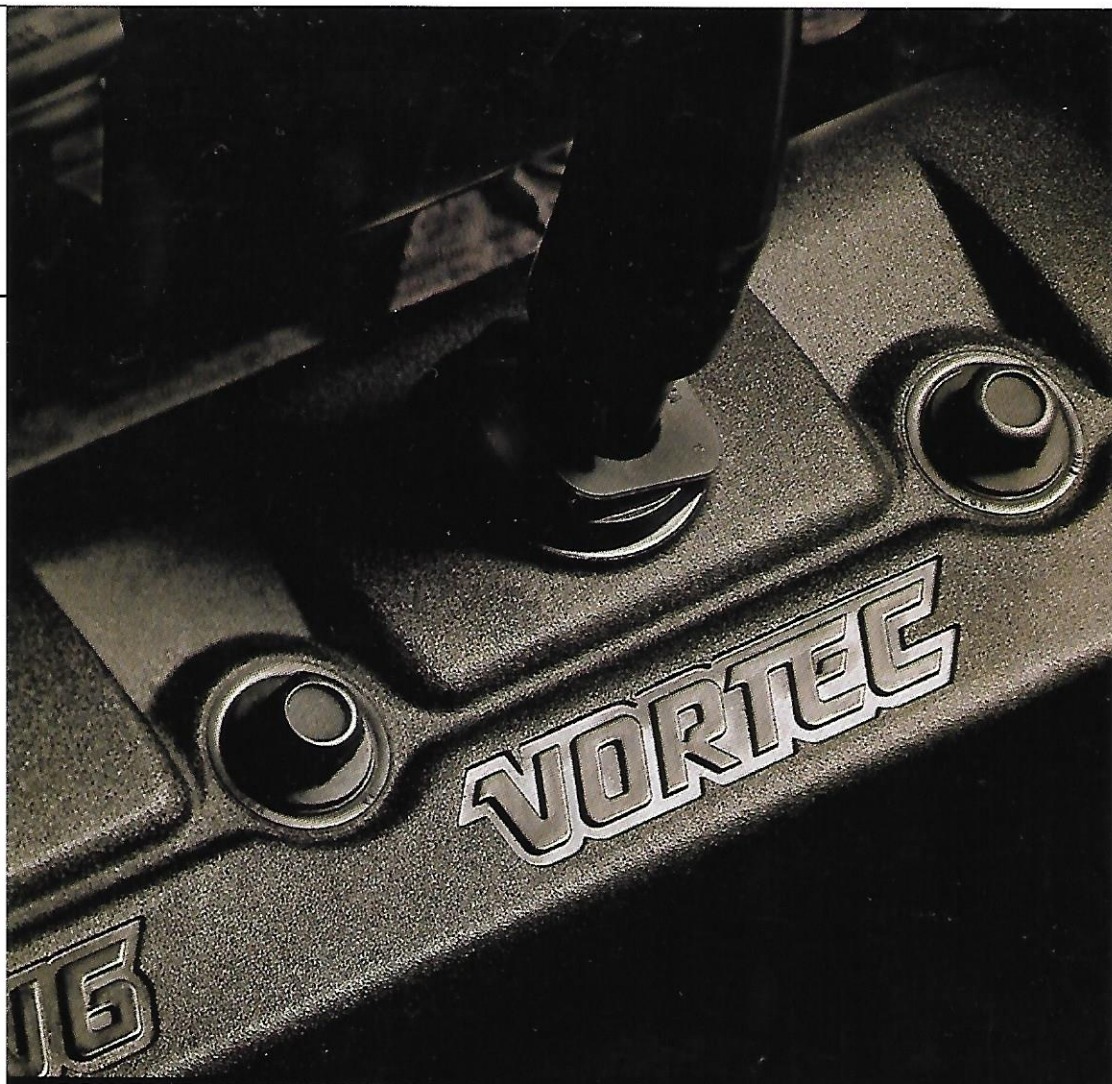
USING GCWRs (GROSS COMBINATION WEIGHT RATINGS) TO DETERMINE ENGINE, TRANSMISSION AND REAR AXLE RATIOS:

You can use your desired GCWR calculation to determine the powertrain you will require to tow a specific trailer with your Blazer. The last column to the right in the chart above shows the maximum allowable GCWR based on all available Blazer engine, transmission and rear axle combinations. The GCWR includes the total loaded weight of both Blazer and the trailer.

There's Nothing Like
The Power And
Reliability Of Vortec.

For some Blazer owners, the real difference
between their vehicle and other sport utili-
ties is right under the hood. After all, Blazer
comes with the strong, reliable Vortec
4300 V6 SFI as standard — the largest
displacement V6 engine available in any
sport utility* today. When it comes to
highway acceleration and passing, hauling
and towing, this engine is designed for years
of dependable performance. The Vortec
4300 is matched with a four-speed automatic
transmission with overdrive for smooth,
effortless shifting.† Vortec power. Just one
of the reasons why Chevy Trucks continue
to be so trusted by so many Americans.

*Excludes other GM vehicles.
†Five-speed overdrive manual transmission is
optional in Blazer 2-Door models.



POWERTRAIN SPECIFICATIONS

ENGINE	VORTEC 4300 V6 SFI ¹ (RPO L35)
Displacement (liters)	4.3
HP @ RPM	190 @ 4400
Torque (lb.-ft.) @ RPM	250 @ 2800
TRANSMISSION AVAILABILITY	
— 5-Speed OD Manual	○ ²
— 4-Speed OD Automatic ³	S

S — Standard. ○ — Optional. 1 Sequential Fuel Injection. 2 2-Door only. Requires tachometer. 3 Electronically controlled, with brake/transmission shift interlock.



Efficient Fuel Delivery.

Sequential Fuel Injection (SFI) ensures precise, high pressure fuel delivery to each cylinder, making more efficient use of every drop of gasoline.



100,000-Mile Maintenance.

Platinum-tip spark plugs help Vortec engines travel up to 100,000 miles before spark plugs need replacing.* And the recommended engine coolant change interval is up to 150,000 miles or five years, whichever comes first.*

*Maintenance needs vary with different uses and driving conditions. See your owner's manual for more information.

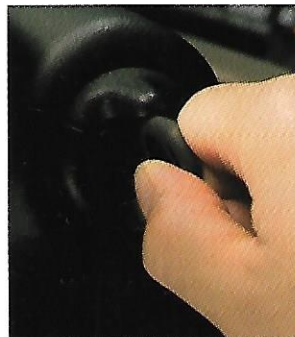
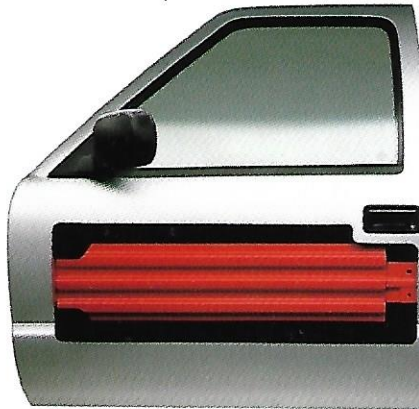
Peace Of Mind: It Comes With Every Chevy Blazer.

Rest assured, Blazer has been engineered with features that help keep your safety and security a top priority. That level of commitment is exemplified by several important new features. When "Auto 4WD" is selected on the Autotrac system for select 4x4 models, power is automatically transferred between the front and rear wheels whenever rear-wheel slippage is detected. A standard flash-to-pass feature activates high beam lamps to alert a driver in front of you that you intend to pass. A warning light on the instrument panel alerts you when the liftglass isn't closed. Add all this to mainstay features such as Next Generation driver and right front-passenger air bags,* and you'll have an added sense of peace in Chevy Blazer.

*Always use safety belts and proper child restraints, even with Next Generation air bags. See the owner's manual for more safety information. See note on this page about child safety.

Side Door Beams.

Double-wall steel doors are reinforced with structural steel beams and are designed to help avoid intrusion into the passenger compartment during shallow-angle side impacts.



Passlock® Theft-Deterrent System.

Standard on all Blazer models, Passlock® automatically disables the vehicle's fuel system if the proper key is not used. On models with Remote Keyless Entry, a new content theft alarm activates headlamps and the horn when unauthorized entry is attempted.

Daytime Running Lamps* And Automatic Exterior Lamp Control.

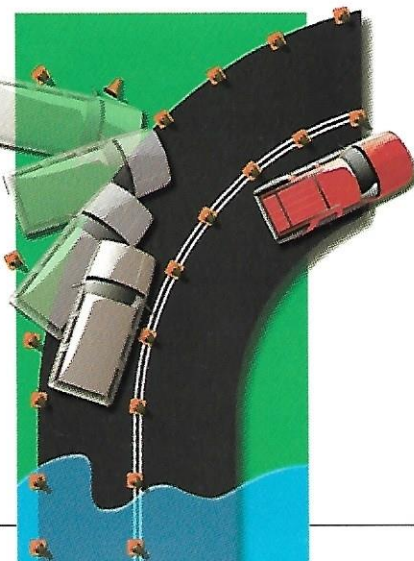
During the day, reduced-intensity headlamps help alert others to your oncoming vehicle. Headlamps automatically switch to full intensity during low-light driving conditions.

*Not available on Blazer ZR2 models at the start of 1999 production. See your Chevy dealer for details.



Standard Four-Wheel Antilock Disc Brakes.

Four-wheel disc brakes with four-wheel ABS help the driver maintain steering control by reducing wheel lockup while braking hard on most slippery surfaces.



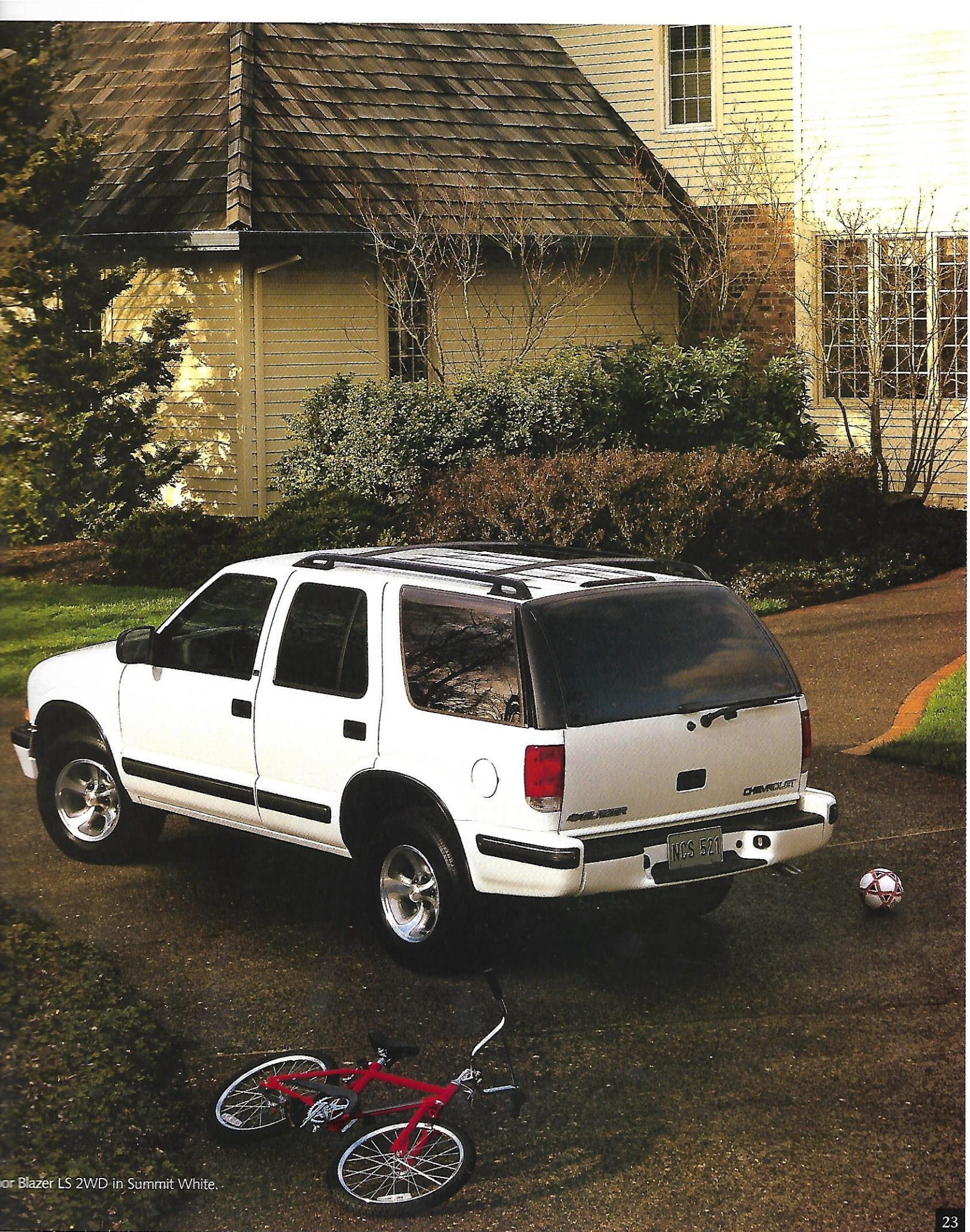
Safety Belt Comfort Guides.

Blazer rear outboard shoulder safety belts feature adjustable comfort guides to better fit older children and small adults. See your owner's manual for details.



A NOTE ON CHILD SAFETY:

Children are generally safer if they ride in a rear seat using the appropriate child safety seats and restraints, which is why General Motors recommends that child safety seats be properly secured in a vehicle's rear seat. Never place a rear-facing child restraint in the front seat of any vehicle equipped with an active air bag. See your vehicle owner's manual and child safety seat instructions for more safety information.



Blazer LS 2WD in Summit White.

Engineered For Driving Security.

Look over Chevy Blazer, and you'll see just how far our engineers have gone to offer you driving security during expected — and unexpected — weather conditions. Now look underneath. The story is the same: quality features designed to last season after season.

Crush Zones.

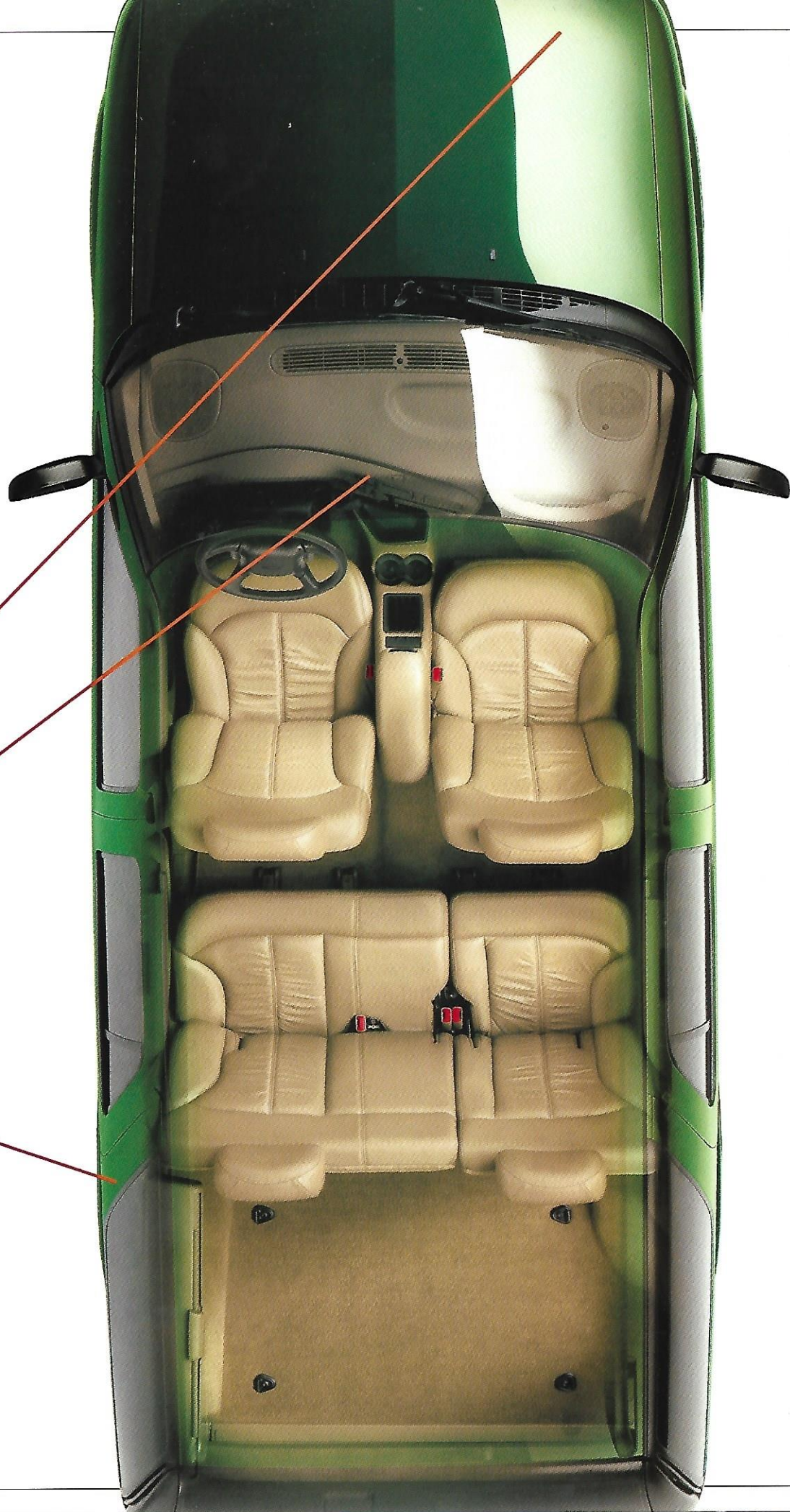
The Blazer front and rear structures are designed to help absorb energy by deforming in a controlled manner during a collision.

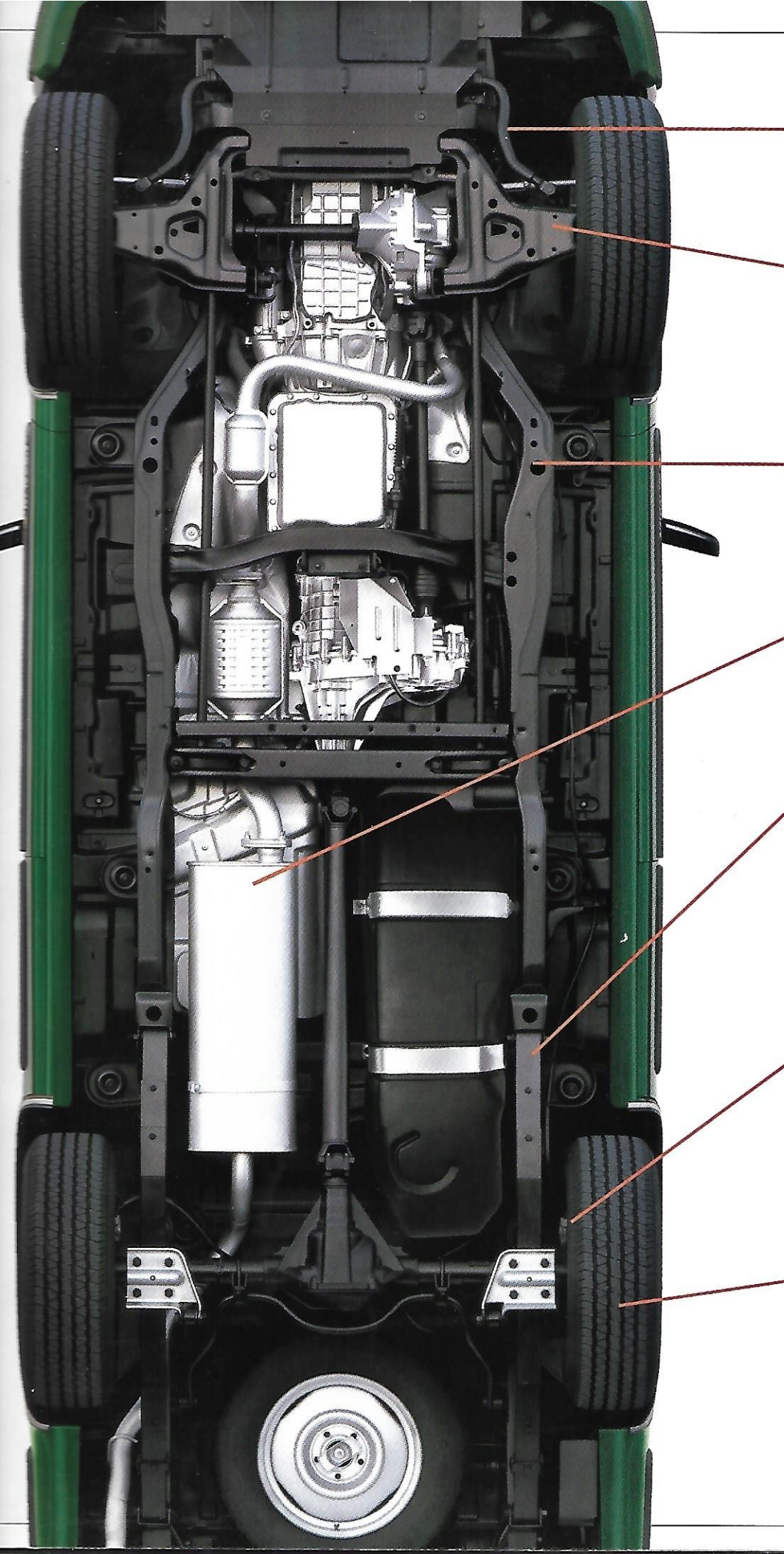
Autotrac Push-Button 4x4.

New-for-1999, this 4x4 system automatically transfers power to all four wheels, based on road conditions. Or, the driver may select full-time 2WD, 4WD High or 4WD Low, as needed. The system also has a provision for Neutral, a handy feature when the vehicle is being towed on all four wheels.

Corrosion-Resistant Exterior Panels.

Exterior body panels (except the roof) are made of two-sided galvanized steel. This helps to virtually eliminate corrosion on the outside surface (resulting from scratches and chips) and rust-through corrosion originating on the inside surface.





Front And Rear Stabilizer Bars.

Drop-link stabilizer bars that are large in diameter help keep the driver in control by reducing body lean when cornering.

Independent Front Suspension.

Blazer features a rugged and reliable independent front suspension (torsion bar design in 4x4; coil spring design in 2WD). It helps keep the front wheels virtually straight up and down at all times for a stable ride and precise control.

Steel Ladder-Type Frame.

A steel ladder-type frame that is boxed for much of its length provides impressive torsional rigidity while helping to support the engine and front suspension.

Stainless-Steel Exhaust System.

The Blazer muffler and exhaust system (from the catalytic converter back) is made of corrosion-resistant aluminized stainless steel, designed to provide long-lasting durability.

Advanced Suspension Components.

Specially designed second-stage springs engage as load weight increases to provide additional support without sacrificing ride quality. Large urethane jounce bumpers in the rear of Blazer reduce the "kick" effect of suspension-to-frame rolling contact and soften the jarring that often accompanies traveling over rough roads.

Stopping Power.

Standard power-assisted four-wheel disc brakes recover quickly from water immersion and provide impressive fade resistance. Standard four-wheel ABS helps keep drivers in control by reducing wheel lockup while braking hard on most slippery surfaces.

Specifically Tuned Tires.

Steel-belted radial-ply tires can handle dry, wet and snowy conditions with ease, providing a smooth, quiet ride in both 2WD and 4x4 models.

Choose Your Ride.

be forewarned. Should the mood strike you, Chevy Blazer can turn an ordinary afternoon of travel into an exhilarating event. This metamorphosis is courtesy of an advanced combination of suspension components that work in sync to help give you driver control, security and confidence. Best of all, Blazer offers a choice of several suspensions (on most models) that deliver excellent driver control, so you can tailor your ride to your own preference.

Smooth Ride Suspension.

Ideal for everyday driving, the standard Blazer suspension combines a comfortably soft ride with impressive handling.

Premium Ride Suspension.

Available only on 4-Door models, this impressively smooth suspension delivers an excellent ride and surefooted agility. This is achieved through the orchestrated interaction of premium gas-charged shock absorbers and additional suspension refinements.

Touring Ride Suspension.

Designed for the true driving enthusiast and available on 2-Door and 4-Door models, this suspension utilizes premium gas-charged shock absorbers and firm spring rates to provide a taut, well-controlled ride.

4x4 Off-Road Suspension.

Available only on 2-Door Blazer 4x4, this package includes extra-large 46mm Bilstein high pressure gas-charged shocks designed to provide impressive suspension control while keeping their cool in the heat of serious off-road action. Tuned for off-road use, this suspension delivers a very firm ride.

ZR2 Wide-Stance Sport Performance Package.

Please see page 16 for information about the ZR2 Wide-Stance Sport Performance Package.

Foreground: 4-Door Blazer LS 2WD in Indigo Blue Metallic. Background: 2-Door Blazer LS 4x4 in Victory Red. Both models shown with additional options.





The Gold Medal Of Versatility.

From their perspective, the U.S. Ski Team finds Chevy Blazer an ideal choice. It has the versatility the team members need to help them reach their dreams. Four-door convenience, a variety of cargo and passenger seating configurations, and available four-wheel-drive capability with Autotrac make Blazer LS an invaluable part of their quest. As the Official Vehicle of the U.S. Ski Team, Chevy Truck helps make it possible for athletes to compete all over the world. With its tremendous flexibility, Blazer continues to be tops with this group of skiers.





4-Door Blazer LS 4x4
in Dark Cherry Red
Metallic. Shown with
additional options.

**Rear Load
Convenience**

An intelligently designed
rear compartment makes
loading and unloading your
Blazer a snap.



Liftgate/Liftglass.

Standard on 4-Door LS and
LT models, a liftgate with
integral liftglass provides
easy access to the rear
compartment. There's no
need to open the entire
liftgate — just use the
liftglass to place small items
like duffel bags or shopping
bags inside Blazer.



Liftglass/Dropgate.

If you seem to be always transport-
ing large items, an available rear
liftglass/dropgate is a must. It opens
easily in tight spaces, too.

Add Your Personal Touch.

A wide selection of available GM Accessories makes it easy to personalize your Chevy Blazer to your own specifications. Make Blazer more attractive or more versatile with a brush guard or running boards. Add special conveniences, such as a bike or ski rack. It's up to you. See your Chevy dealer for the complete list of these available GM Accessories.

4-Door Blazer 4x4 in Light Pewter Metallic. Shown with available GM Accessories and additional options.

2WD and 4x4 Steel Wheel.

Standard on Base 2- and 4-Door models. Includes black hubcap and bright trim ring (4x4 wheel shown).



2WD Torqued Five-Spoke Aluminum Wheel.

Included with LS or LT trim. Optional (RPO N60) on Base models. Includes bright machined-face and argent-painted accents.



4x4 Flat Five-Spoke Aluminum Wheel.

Included with ZR2 Performance Package on 2-Door models. Optional (RPO PA3) on Base 2-Door models. Includes bright machined-face and medium gray accents.



4x4 Five-Spoke Aluminum Wheel.

Included with LS trim on 4-Door models. Optional (RPO N90) on Base 4-Door models.



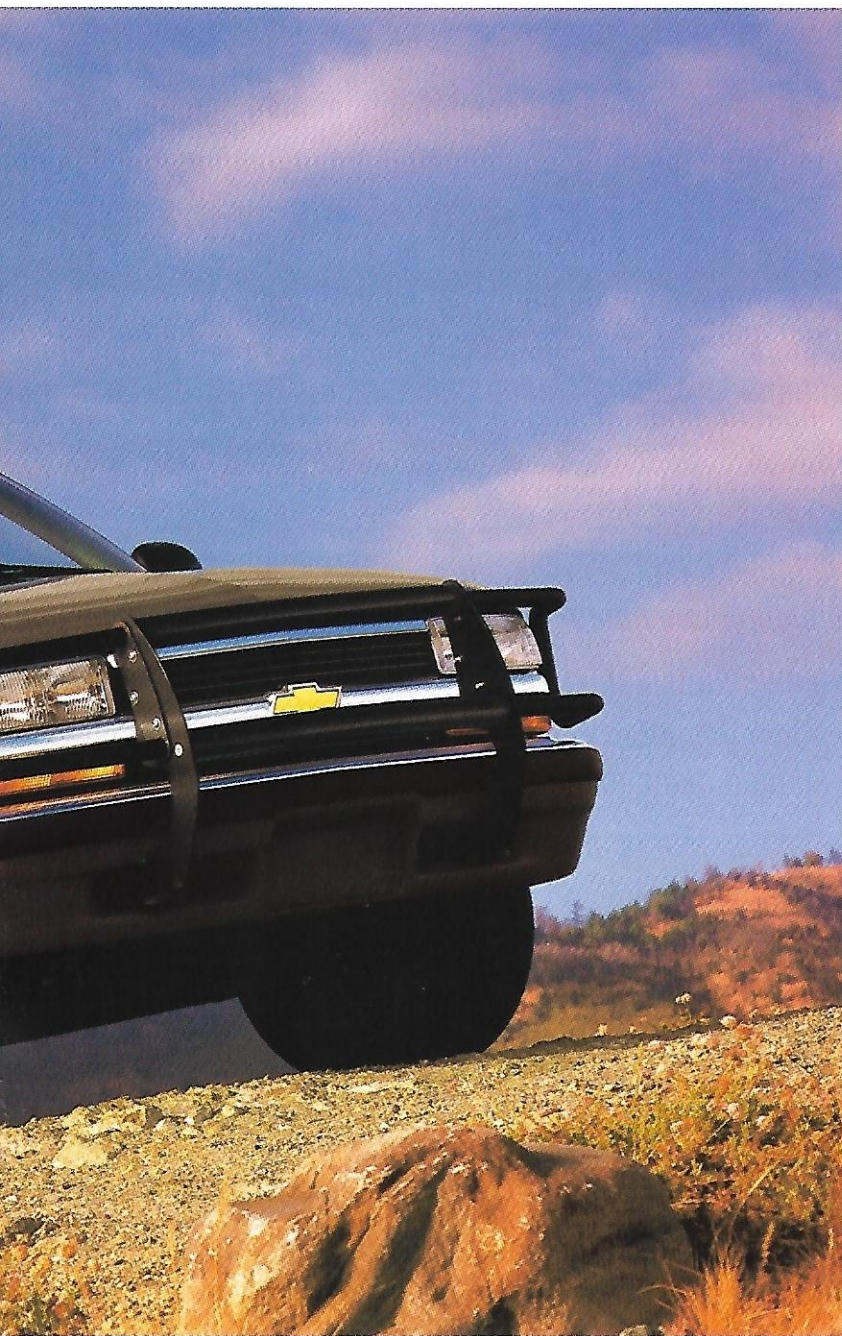
4x4 Directional Aluminum Wheel.
Included with LT trim on 4-Door only. Includes bright machined-face and black accents.



TrailBlazer 4x4 Flat Five-Spoke Aluminum Wheel.
Included with the TrailBlazer Package. Includes bright machined-face with gold-painted accents.



TrailBlazer 2WD Torqued Five-Spoke Aluminum Wheel.
Included with the TrailBlazer Package. Includes bright machined-face and gold-painted accents.



Cargo-Area Organizer.

Put everything in its place, from groceries to sporting equipment, with this available removable cargo-area organizer. It features deep sidewalls and individual dividers. Plus, it cleans up quickly with soap and water.



Hood Deflector.

Help keep your Blazer exterior looking good with this hood deflector. It helps prevent bugs, stones and road debris from chipping or dinging the hood of your Blazer.

Ski Rack.

Skis have a way of taking up valuable interior room. With this deluxe ski rack, you can hold four pairs of skis or two snowboards. It snaps open and closed easily.



BUYER'S GUIDE

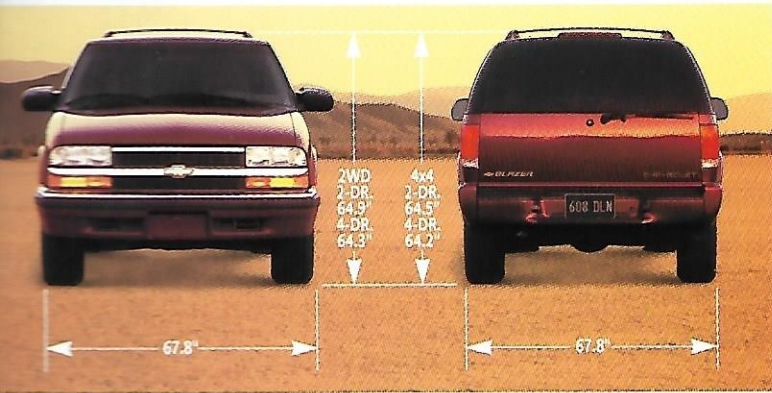
Dimensions, Models And Packages.

MODEL SELECTOR

— Standard. O — Optional.

MODEL	GVWR (LBS.)	TRIM LEVEL		
		BASE	LS	LT
Blazer 2-Door 2WD	4450	S	O	--
Blazer 2-Door 4x4	4850 ¹	S	O	--
Blazer 4-Door 2WD	5000	S	O ²	O
Blazer 4-Door 4x4	5350	S	O ²	O

5,000-lb. GVWR with available RPO ZR2 Ride/Suspension Package. ² Includes Exterior Appearance Package features.



4-DOOR BLAZER

These packages make it easy to select your Blazer to your exact specifications. Just let your dealer know which model and individual options you prefer.

■ — Included in Preferred Equipment Group.

MODEL	BASE 1SA	BASE 1SB	LS 1SC	LT 1SD
CONTENT PACKAGES				
Body: with rear liftglass/dropgate	■ ¹	■ ¹		
Convenience Group: Tilt-Wheel™ steering column and electronic speed control		■	■	■
Luggage carrier		■	■	■
Radio: ETR AM/FM stereo with seek-scan, cassette player and digital clock		■		
Radio: Premium ETR AM/FM stereo with seek-scan, cassette player and digital clock ³			■	■
LS trim			■	
Body with rear liftgate/liftglass			■ ²	■ ²
Custom overhead console: with electronic compass and outside temperature display			■	
Convenience Group: power door locks, power windows and heated power remote exterior mirrors			■	■
Seats: reclining high-back buckets with floor-mounted console			■ ⁴	
Electric Rear-Window Convenience Package: liftglass release, defogger and wiper/washer			■	■
Suspension Package: Premium Ride (RPO ZW7) — 4-Door ⁵			■	■
Tachometer			■	■
Tires: P235/70R-15 blackwall, all-season ⁶			■	■
LT trim				■
Air conditioning: with electronic climate control				■
Overhead console: deluxe with electronic compass, outside temperature display, trip computer and HomeLink transmitter				■
Foglamps				■
Mirrors: self-dimming inside rearview; dual heated power remote exterior with self-dimming feature on driver side				■
Remote Keyless Entry and content theft security				■
Seats: 8-way power, driver and front passenger with driver memory ⁷				■

¹ May substitute RPO TB4 rear liftgate/liftglass. ² May substitute RPO E55 rear liftglass/dropgate. ³ Sound system upgrade allowed. ⁴ May substitute RPO AM6 60/40 reclining split-bench seat. ⁵ May substitute RPO Z85 Touring Suspension or RPO ZQ1 Smooth Ride Suspension. ⁶ May substitute optional tires. ⁷ Driver memory feature interim availability 1999 model year. NOTE: See your Chevy Truck dealer for full details about equipment that may be substituted.

2-DOOR BLAZER

These packages make it easy to tailor Blazer to your exact specifications.

MODEL	BASE 1SA	BASE 1SB	LS 1SC	LS 1SD
CONTENT PACKAGES				
Body: with rear liftglass/dropgate	■	■	■	■
Convenience Group: Tilt-Wheel™ steering column and electronic speed control		■	■	■
Luggage carrier		■	■	■
Radio: ETR AM/FM stereo with seek-scan, cassette player and digital clock		■		
Radio: premium ETR AM/FM stereo with seek-scan, cassette player and digital clock ¹			■	■
LS trim			■	■
Custom overhead console: with electronic compass and outside temperature display			■	
Convenience Group: power door locks, power windows and heated power remote exterior mirrors			■	■
Electric Rear-Window Convenience Package: liftglass release, defogger and wiper/washer			■	■
Suspension Package: Touring (RPO Z85) ²			■	■
Tachometer			■	■
Tires: P235/70R-15 blackwall, all-season ³			■	■
Overhead console: deluxe with electronic compass, outside temperature display, trip computer and HomeLink transmitter				■
Mirrors: self-dimming inside rearview; dual heated power remote exterior with self-dimming LH				■
Remote Keyless Entry and content theft security				■
Seat adjuster: 6-way power, driver				■

¹ Sound System upgrade allowed. ² May substitute RPO Z83 Smooth-Ride Suspension, RPO ZM6 Off-Road Suspension (4x4 models) or RPO ZR2 Wide-Stance Sport Performance Suspension (4x4 models). ³ May substitute optional tires. NOTE: See your Chevy Truck dealer for full details about equipment that may be substituted.

Exterior Standard And Optional Features.

NOTE: The Blazer trim features indicated reflect only a portion of the content of each trim level. See your Chevy dealership for complete details.

NOTE: Some individually available options listed may be included in, or ordered only with, specific Preferred Equipment Groups. Some additional ordering restrictions may apply. Please see your Chevrolet dealer for details.

NOTE: Tire chains should not be used on Blazer models equipped with the following size tires because they could cause damage to the vehicle:

- P235/75R-15
- P235/70R-15
- P235/65R-15

Blazer Package (4-Door Only)

Base	LS	LT
-	-	○

Includes monochromatic sport exterior appearance with specific rocker panel graphics, gold-accented wheels, pin striping and badging, Two-Tone Custom Leather seating surfaces with specific door trim, floor mats and floor-mounted automatic transmission shift lever.

Wide-Stance Sport Performance Package (2-Door Only)

Base	LS
-	○

Includes reinforced, wide-stance chassis, 31X10.5R-15 on- /off-road tires, Bilstein shock absorbers, Underbody Shield Package and additional suspension upgrades.

Standard and available on 4-Door models only. 2 Standard and available only on 2-Door LS. 3 Dark Gray with ZR2 Wide-Stance Sport Performance Package (RPO ZR2). 4 Not available on 2-Door 4x4 models. 5 Includes self-dimming inside rearview mirror. 6 Deleted on optional (RPO ZY7) Custom Two-Tone if ordered. 7 Requires optional (RPO ZQ6) Convenience Group and (RPO ZM8) Rear Window Convenience Package. 8 Included with optional (RPO V10) Cold Climate Package. 9 Required with optional (RPO GT4) 3.73 rear axle ratio. 10 Included with ZR2 Wide-Stance Sport Performance Package (RPO ZR2). 11 Not available with ZR2 Wide-Stance Sport Performance Package (RPO ZR2); or 2WD models with (RPO GT4) 3.73 axle ratio, or manual transmission. 12 Requires (RPO Z83 or ZQ1) Touring Suspension Package. 13 Not available on 4x4 models. 14 Requires (RPO Z85) Touring Suspension Package or (RPO ZW7) Premium Ride Suspension Package. 15 Requires (RPO Z85) Touring Suspension Package or (RPO ZM6) Off-Road Suspension Package; not available on 2WD models. 16 Requires (RPO P16) outside spare wheel tire carrier on 2-door 4x4 models. 17 Included and available only on (RPO ZR2) Wide-Stance Sport Performance Package.

TRIM LEVEL

BASE LS LT

S — Standard. O — Optional.

EXTERIOR FEATURES

Air dam front: color-keyed to front bumper color		S	S	S
Bumper				
— front: chrome, with rub strip		S	S ¹	S
— front: body-color		-	S ^{2,3}	-
— rear-step: body-color		S	S ³	S
Carrier, luggage: roof-mounted, black (200-lb. loading capacity)		O	S	S
Convenience Package: Rear window electric liftglass release, defogger and wiper/washer		O	S	S
Daytime Running Lamps (DRL): with Automatic Exterior Lamp Control*		S	S	S
Foglamps		-	O ⁴	S
Grille: bright accent	2-Door	S	-	-
	4-Door	S	S	-
Grille: body-color, with bright accent	2-Door	-	S	-
	4-Door	-	-	S
Headlamps: dual composite halogen		S	S	S
Mirrors, LH and RH: black, fold-away, below-eyeline				
— dual manual adjustable		S	-	-
— heated dual electric remote adjustable		-	S	-
— heated, dual electric remote adjustable with self-dimming LH		-	O ⁵	S
Moldings: body-side and wheel-opening	4-Door	-	S	S
Striping, body		-	-	S ⁶
Sunroof, electric:				
— with tilt-and-slide, wind-deflector shade and express-opening features; also includes mini overhead console		O	O	O
Tailgate:				
— liftglass/dropgate	2-Door	S	S	-
— liftglass/dropgate	4-Door	S	O	O
— liftgate: with integral liftglass (includes rear-window wiper/washer and defogger)	4-Door	O ⁷	S	S
Wipers: intermittent		S	S	S

CHASSIS FEATURES

Alternator: 100-amp		S	S	S
Battery: Delco Freedom (includes rundown protection and retained accessory power features)				
— regular-duty (525 cold-cranking amps)		S	S	S
— heavy-duty (690 cold-cranking amps)		O ⁸	O ⁸	O ⁸
Brakes: 4-wheel disc with power assist and 4-wheel antilock (ABS)		S	S	S
Cold Climate Package (includes heavy-duty battery and engine block heater)		O	O	O
Differential, locking rear ⁹		O	O	O
Exhaust system, stainless steel		S	S	S
Fuel tank				
— approx. 19-gal. capacity	2-Door	S	S	-
— approx. 18-gal. capacity	4-Door	S	S	S
Lamp, engine compartment		S	S	S
Recovery hooks: 2 front (4x4 only)		S	S	S
Shield Package: includes transfer case and front differential skid plates, fuel tank and steering linkage shield	4x4 models	O	O ¹⁰	O
Steering, variable-ratio power		S	S	S
Suspension, front: independent (2WD: coil springs; 4x4: torsion bar)		S	S	S
Suspension, rear: semi-floating rear axle with two-stage multi-leaf springs		S	S	S
Tools: mechanical jack with cover and wheel wrench		S	S	S
Trailer wiring harness (8-lead)		S	S	S
Trailer Special Equipment: heavy-duty, includes weight-distributing hitch platform ¹¹		O	O	O
Transfer case, Autotrac, with instrument panel-mounted electric shift control (4x4 models only)		-	O	S
Transfer case, Insta-Trac, with instrument panel-mounted electric shift control (4X4 models only)		S	S	-

TIRES

Tire, spare: with steel wheel				
— full-size, mounted inside	2-Door	S	S	-
— full-size, mounted outside (includes cover)	2-Door	O	O	-
— full-size, mounted underbody	4-Door	S	S	S
Tire: steel-belted radial				
— P205/75R-15 all-season blackwall		S	O ¹²	O ¹²
— P205/75R-15 all-season white outline-lettered		O ^{12,13}	O ^{12,13}	O ^{12,13}
— P235/70R-15 all-season blackwall		O ¹⁴	S	S
— P235/70R-15 all-season white outline-lettered		O ¹⁴	O ¹⁴	O ¹⁴
— P235/75R-15 on-road/off-road white outline-lettered		O ^{15,16}	O ^{15,16}	O ¹⁵
— 31X10.5R-15 on-road/off-road blackwall		-	O ¹⁷	-

*Not available on Blazer ZR2 models at the start of 1999 production. See your Chevy dealer for details.

Interior Standard And Optional Features, and Color Trim Availability.

TRIM LEVEL	BASE	LS	LT
— Standard, O — Optional.			
SEATING — 4-DOOR			
Front 60/40 split-bench seat with integral head restraints, dual recliners, dual cup holders and armrest with integral storage Custom Cloth trim	S	O	—
Front high-back reclining bucket seats with integral head restraints and manual lumbar support adjusters; also includes floor-mounted convenience console with dual cup holders Custom Cloth trim	—	S	—
Driver seat adjuster, 6-way power driver and front passenger Custom Cloth trim	—	O	—
4-way power front high-back reclining bucket seats with 4-way adjustable head restraints, power lumbar support adjusters and driver memory; ¹ also includes floor-mounted convenience console with dual cup holders. Premium Cloth trim Custom Leather seating surfaces	—	—	O S
Seat heater, heated: front, with 2 heat settings	—	—	O ²
Rear 60/40 split bench with independently folding backrests and flip-down outboard head restraints	S	S	S
SEATING — 2-DOOR			
Front high-back reclining buckets with integral head restraints, manual lumbar support adjusters, and passenger-side easy-entry feature; also includes floor-mounted convenience console with dual cup holders Custom Cloth trim	S	S	—
Driver seat adjuster, 6-way power driver	—	O	—
Rear 50/50 split bench with independently folding backrests and flip-down outboard head restraints	S	S	—
EXTERIOR FEATURES			
Side mirrors: Next Generation driver and right front-passenger	S	S	S
Air conditioning (with CFC-free refrigerant)	S	S	S ³
Door handles: passenger	S	S	S
Tie-downs, rear compartment: 4	S	S	S
Hitch hooks: LH and RH (plus two in cargo area in 4-Door)	S	S	S
Overhead console: with two stowage compartments, garage door opener compartment, four map lamps, dome lamp, electronic compass and outside temperature display	—	S ⁴	—
Deluxe overhead console: with two stowage compartments, four map lamps, dome lamp, electronic compass, trip computer, outside temperature display and HomeLink transmitter	—	O ⁴	S
Convenience Group: power door locks, power windows and heated power remote exterior mirrors	O	S	S
Convenience Group: Tilt-Wheel™ steering column and electronic speed control	O	S	S
Cup holders	S	S	S
Interior trim panels: color-keyed molded with integral armrests and storage pockets with soft cloth upper inserts with simulated leather upper inserts	S —	S —	— S ⁵
Interior covering: color-keyed carpeting and carpeted floor mats	S	S	S

Driver memory feature interim availability 1999 model year. ² Requires Custom Leather seating surfaces (not available with Premium Cloth). ³ With electronic climate control. ⁴ Console is not available on 4-Door models when optional (RPO AM6) 60/40 split-folding bench seat is specified. ⁵ Premium Cloth inserts with available Premium Cloth seating. ⁶ Included in Deluxe overhead console. ⁷ Requires outside spare tire carrier (RPO P16) and LS trim (RPO CF3). Available only on 4x4 model. ⁸ Single-blade with optional (RPO CF5) sunroof. ⁹ Required with 5-speed manual transmission. ¹⁰ Requires (RPO DDO) exterior mirrors with self-dimming LH. ¹¹ Requires Bose Sound System.

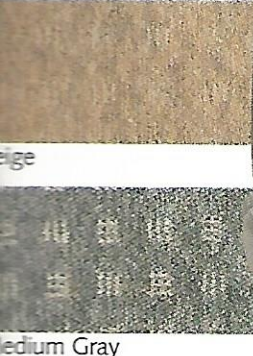
TRIM LEVEL	BASE	LS	LT
Glass: Solar-Ray deep-tinted	—	—	—
— with light-tinted rear window	S	—	—
— with deep-tinted rear window	—	S	S
Glass: rear-quarter window, swing-out	2-Door	S	S
HomeLink: 3-channel programmable transmitter	—	O ⁶	S
Lights, interior: door and tailgate-operated dome and front-floor courtesy (with door-operated delayed-lighting feature)	—	S	S
Locking: — single two-sided key for ignition, doors and tailgate — rear-seat child security locks — Remote Keyless Entry (includes content theft security)	4-Door	S S —	S S O
Net, cargo convenience	—	S	S
Retained accessory power	—	S	S
Scotchgard™ protection on carpeting, cloth seats and cloth door trim	—	S	S
Shade, rear compartment: color-keyed, removable	2-Door 4-Door	— —	O ⁷ S
Stowage boxes, rear-seat area (2)	2-Door	S	S
Sunshades: — padded, color-keyed cloth, each with elastic strap, RH vanity mirror — dual-blade, padded, color-keyed cloth, each with elastic strap, extender and lighted vanity mirror	—	S —	— S ⁸ S ⁸
INSTRUMENT PANEL			
Cigarette lighter: with lighted ashtray	—	S	S
Electronic climate control	—	—	S
Flash-to-pass feature	—	S	S
Gauges: — analog-type speedometer, trip odometer, fuel, voltmeter, coolant temperature and oil pressure — tachometer	—	S O ⁹	S S
Glove box (lighted)	—	S	S
Heater, with windshield and side-window defoggers and rear-area heat ducts	—	S	S
Mirror: — rearview: 10" day/night — rearview: self-dimming electrochromic	—	S —	S O ¹⁰
Passlock® vehicle theft-deterrent system	—	S	S
Power outlets: auxiliary 12-volt electrical (two, with covers)	—	S	S
Steering wheel: black 4-spoke	—	S	—
Steering wheel: leather-wrapped black 4-spoke	—	—	S
Turn signal-on reminder chime	—	S	S
Warning tone: headlamps-on	—	S	S
SOUND SYSTEMS BY DELCO ELECTRONICS			
NOTE: All Blazer sound systems include a Delco Electronics ETR (Electronically Tuned Receiver) AM/FM stereo and digital clock.			
ETR AM/FM stereo with seek-scan (four premium speakers)	—	S	—
ETR AM/FM stereo with seek-scan and cassette player (four premium speakers)	—	O	—
ETR AM/FM stereo with cassette player: — preset scan, automatic tone control, speed-compensated volume, cassette music search, TheftLock and Enhanced Performance Speaker System (six premium speakers) — with Bose Sound System, including premium Bose speakers, built-in amplifier and equalizer — with multiple CD changer in console, including 6-disc magazine, multi-disc random play, track seek and disc advance	—	— — —	S O O
ETR AM/FM stereo with compact disc player: — preset scan, automatic tone control, speed-compensated volume, CD random select, CD-in play/radio switching, TheftLock and Enhanced Performance Speaker System (six premium speakers) — with Bose Sound System, including premium Bose speakers, built-in amplifier and equalizer — with multiple CD changer in console, including 6-disc magazine, multi-disc random play, track seek and disc advance	—	— — —	O O O ¹¹
ETR AM/FM stereo with compact disc player and floor console-mounted cassette player, includes preset scan, automatic tone control, speed-compensated volume, cassette auto reverse, CD random select, CD-in play/radio switching, TheftLock and Enhanced Performance Speaker System (six premium speakers)	—	—	O O
Radio controls, redundant, steering wheel mounted: mute, programmed advance, seek up/down, volume up/down	—	—	O O

With durable cloth trim or elegant Custom Leather* seating surfaces combined with an extensive selection of exterior paint colors, you can personalize your new Chevy Blazer just the way you want it.

COLOR AVAILABILITY

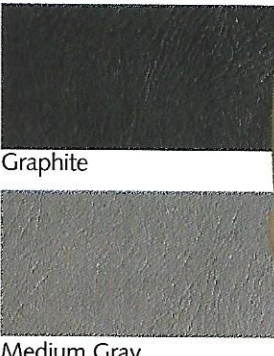
EXTERIOR COLORS	INTERIOR COLORS		
	BEIGE	GRAPHITE	MEDIUM GRAY
Medium Beige Mystique Metallic	■	■	■
Onyx Black	■	■	■
Indigo Blue Metallic	■	■	■
Dark Copper Metallic	■	■	■
Sunset Gold Metallic	■	■	■
Meadow Green Metallic	■	■	■
Light Pewter Metallic	■	■	■
Victory Red	■	■	■
Dark Cherry Red Metallic	■	■	■
Summit White	■	■	■

Custom Cloth trim standard with Base and LS.



Graphite Custom Cloth

Custom Leather trim* standard with LT (4-Door only).



Beige Custom Leather

Premium Cloth trim available with LT (4-Door only).



Medium Gray Premium Cloth

Custom Leather Two-Tone trim,* standard with TrailBlazer model.

Available only in Light Beige and Beige color combination (as shown).



Two-Tone Beige Custom Leather

*Leather on seating surfaces only.

Genuine Customer Care ...



You Never Travel Alone.

Vehicle Limited Warranty

Warranty is for GM vehicles registered in the United States. Please see your Chevrolet dealer for complete terms and conditions of this New Vehicle Limited Warranty.

What Is Covered For 3 Years Or 36,000 Miles*:

-  The complete vehicle
Sheet-metal coverage:
 - Corrosion coverage
 - Rust-through coverage[†]
-  Tires
Repairs made to correct any vehicle defect
-  Towing to your nearest Chevrolet dealership
No charge for most warranty repairs.

*Whichever comes first. [†]6 years or 100,000 miles, whichever comes first.

Courtesy Transportation

Customers who purchase or lease a Chevrolet Blazer are eligible for Courtesy Transportation when their vehicles are at a participating dealership for repairs under the 3-year/36,000-mile New Vehicle Limited Warranty. Courtesy Transportation is available at participating dealers only. May include shuttle service, expense reimbursement or, if the repair requires the vehicle to stay at the dealership overnight, vehicle rental. Actual services may vary at the election of the participating dealer. See your dealer for details.

Roadside Assistance*




Roadside Assistance service is provided through a toll-free number, 24 hours a day, 365 days a year. Roadside Assistance advisors can assist with mechanical concerns over the phone or coordinate a variety of services through skilled and professional service providers.

*Roadside Assistance membership is free. **Some services may incur costs.** Courtesy Care is available to retail, retail lease and corporate lease customers operating 1994 and newer Chevrolet vehicles for a period of 3 years/36,000 miles. All Courtesy Care services' associated costs must be prearranged by Chevrolet Roadside Assistance or dealer service management and must be driver-initiated. Basic Care and Courtesy Care are not part of or included in the coverage provided by the New Vehicle Limited Warranty. Chevrolet reserves the right to modify or discontinue Basic Care and Courtesy Care at any time. See dealer for complete details of the Chevrolet Roadside Assistance Program.

Courtesy Care Provides:

-  Toll-free access 1-800-CHEV-USA
Basic over-the-phone technical advice
-  Free towing to nearest dealer for warranty repairs
Dealer services at a reasonable cost (i.e., wrecker services, locksmith/key service, glass repair, etc.).

Courtesy Care, Which Applies For 3 Years/36,000 Miles, Provides:

-  Basic Care services
Free fuel delivery
-  Free locksmith/key service (when keys are lost on the road or locked inside)
Free non-warranty towing
-  Free flat tire change service
Free jump start.

Additional Information.

Please Contact Us ...

For any additional information on 1999 Chevrolet car or truck products, call 1-800-950-2438 or visit us on the Internet at <http://www.chevrolet.com>.

Customer Assistance Center.

The Chevrolet Customer Assistance Center has a special toll-free number: 1-800-222-1020. It puts you in contact with Chevrolet Specialists who can handle any product or service question or concern you may have with your new Chevy Blazer.

SMARTLEASE By GMAC.

SMARTLEASE by GMAC makes it easy to enjoy the excellence of Blazer. With SMARTLEASE, qualified customers can be approved in about one hour, and you'll enjoy low SMARTLEASE monthly payments. Plus, SMARTLEASE offers you choices at the end of your lease. You can either buy your Blazer at a price guaranteed up front, or return your truck with no other obligations — providing the terms of the lease have been met. For more information about SMARTLEASE or any of the other quality GMAC financing options, see your Chevy dealer or call 1-800-32-SMART.

Turn Plastic Into Steel With The GM Card®.

The GM MasterCard® with no annual fee (standard GM Card only) gives you an important financial advantage on your next purchase or lease of a GM vehicle. Use The GM Card for purchases and you'll receive up to 5% of that purchase amount in GM Card Earnings. That's over and above any other discount or incentive. To request your GM Card, call 1-800-8GM-CARD.

The GM Mobility Program.

Chevrolet recognizes the importance of mobility to everyone's life and, therefore, offers financial assistance to persons with disabilities through the General Motors Mobility Program. This program can provide up to \$1,000 reimbursement toward the cost of aftermarket mobility adaptive equipment for drivers or passengers, \$200 of which may be applied towards a siren detector for drivers who are deaf or hard-of-hearing. For details and free resource information, call: 1-800-323-9935. (TTY users: 1-800-833-9935).

Updated Service Information.

Chevrolet regularly sends its dealers useful service bulletins about Chevrolet products. Chevrolet monitors product performance in the field. We then prepare bulletins for servicing our products better. Now you can get these bulletins, too. Ask your dealer or, for ordering information, call toll-free: 1-800-551-4123.

Assembly.

Chevrolets and their components are assembled or produced by different operating units of General Motors, its subsidiaries or suppliers to GM worldwide. We sometimes find it necessary to produce Chevrolet trucks with different or differently sourced components than originally scheduled. Since some options may be unavailable when your vehicle is assembled, we suggest that you verify that your vehicle includes the equipment you ordered or, if there are changes, that they are acceptable to you.

Engines.

Chevrolet trucks are equipped with engines produced by different operating units of GM, its subsidiaries or suppliers to GM worldwide.

Corrosion Protection.

Chevrolet trucks are designed and built to resist corrosion. All body sheet-metal components are warranted against rust-through corrosion for 6 years/100,000 miles (whichever comes first). Application of additional rust-inhibiting materials is not required and none is recommended. See your Chevrolet dealer for terms of this limited warranty.

GM Protection Plan.

The GM Protection Plan offers service protection in addition to that provided by GM's New Vehicle Limited Warranty. Ask your dealer about it. Coverage available only in the U.S. and Canada.

A Word About This Brochure.

We have tried to make this brochure comprehensive and factual. We reserve the right, however, to make changes at any time, without notice, in prices, colors, materials, equipment specifications, models and availability. Since information may have been updated since the time of printing, please check with your Chevrolet dealer for complete details. Chevrolet reserves the right to lengthen or shorten the model year for any product for any reason, or to start and end model years at different times.

Chevrolet, the Chevrolet Emblem, General Motors, GM, the GM Emblem, Blazer, Tahoe, ZR2, Astro, Suburban, Venture, Silverado, S10, Chevy Express, Tracker, Passlock, ETR, Solar-Ray, and 1-800-CHEV-USA are registered trademarks of the General Motors Corporation. Chevy, Autotrac, TrailBlazer and Vortec are trademarks of the General Motors Corporation. GMAC and SMARTLEASE are registered trademarks of the General Motors Acceptance Corporation. Scotchgard is a trademark of 3M company. HomeLink is a registered trademark of the Prince Corp. Bose is a trademark of the Bose Corp. Delco and TheftLock are registered trademarks of the Delco Electronics Corp. © 1998 General Motors Corp. All rights reserved.



PROUD SPONSOR OF THE
2000 U.S. OLYMPIC TEAM

Litho in USA



July 1998

Exterior Colors

Medium Beige
Mystique Metallic



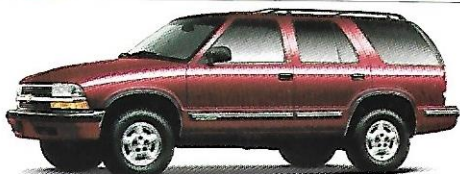
Onyx Black



Indigo Blue
Metallic



Dark Copper
Metallic



Sunset Gold
Metallic



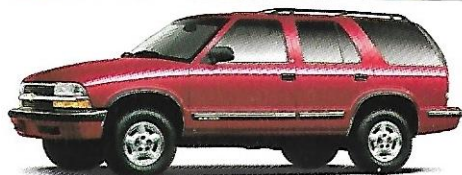
Meadow Green
Metallic



Light Pewter
Metallic



Victory Red



Dark Cherry Red
Metallic



Custom
Two-Tone Paint
shown in Summit White
and Light Pewter Metallic



Custom Two-Tone paint (RPO ZY7) available in 15 color combinations on 4-Door models with LS or LT trim only. See your Chevy Truck dealer for color combination availability.

LIKE A ROCK.

It's more than just a song.

They're the words we live by.

*They mean we build Chevy Trucks to be the most dependable,
longest-lasting trucks on the road.**

Trucks that carry that responsibility as easily as they carry a load of lumber.

Built rugged to take what the world can dish out.

Built dependable, because we know people are counting on us.

Built for the people who get the job done, day after day.

There's a quiet satisfaction in that.

And a whole lot of pride.

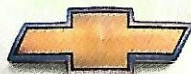


Because we don't just build trucks to carry people and their loads.

We build the trucks that carry their dreams.

*Dependability based on longevity: 1981-1997 full-line light-duty truck company registrations. Excludes other GM divisions.

CHEVY TRUCKS



LIKE A ROCK

www.chevrolet.com