

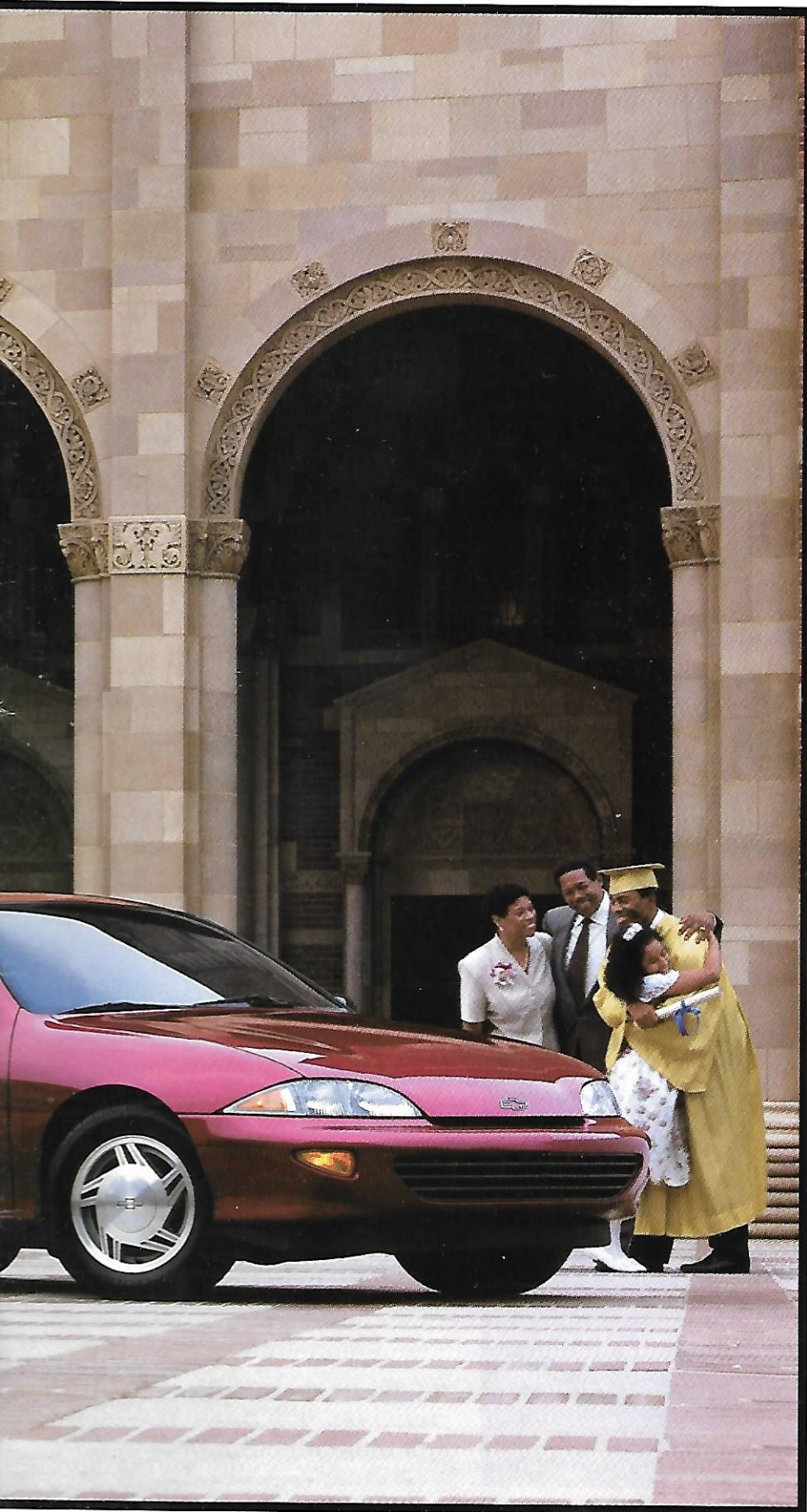
1998 Chevrolet Cavalier





*Cavalier Coupe in Bright Aqua Metallic.
Cavalier LS Sedan in Cayenne Red Metallic.
Some optional equipment shown.*

Cavalier. The Car That's Easy To Own.



Some people get what they pay for. Others get much more. Cavalier owners, for example. Cavalier is easy to own. It has the features you need. All for a price that's Genuine Chevrolet.

Thoughtfully Designed For You

Considerate features in every Cavalier include a totally passive theft-deterrent system and battery-rundown protection that shuts off interior lights should you forget to do so. Just as important, Cavalier is designed to last. Protection against corrosion is enhanced by the use of two-side galvanized steel; and you can travel up to 100,000 miles before the first scheduled tune-up.*

A Comprehensive Safety Package

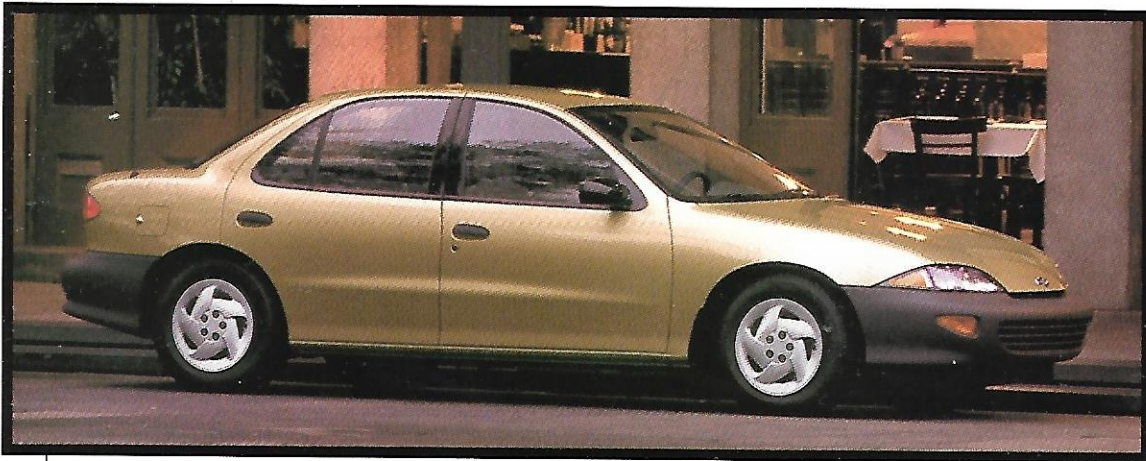
The standard Cavalier safety package includes a four-wheel anti-lock brake system (ABS), Next Generation driver and front-passenger air bags† and Daytime Running Lamps.

Cavalier has the thoughtful features that make a car easy to own, and it has quality you can depend on. No wonder *Consumers Digest* has honored Cavalier with a "Best Buy" rating for three years running.**

*Maintenance needs vary with different uses and driving conditions. See owner's manual for more information.

†Always wear safety belts, even with air bags.

**1995, 1996 and 1997 model years.



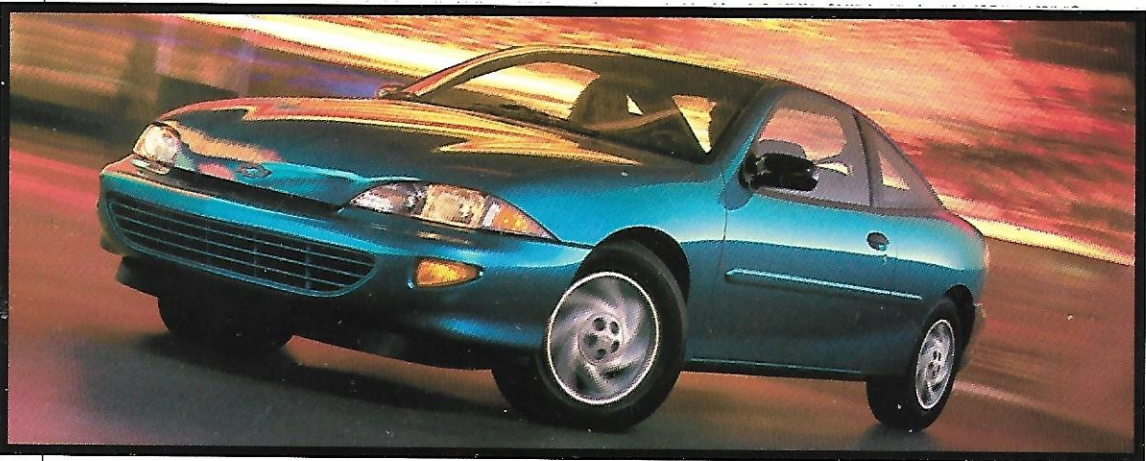
Cavalier Sedan

Enjoy room for five in this easy-to-own, thoughtfully designed Sedan. A very smart buy!



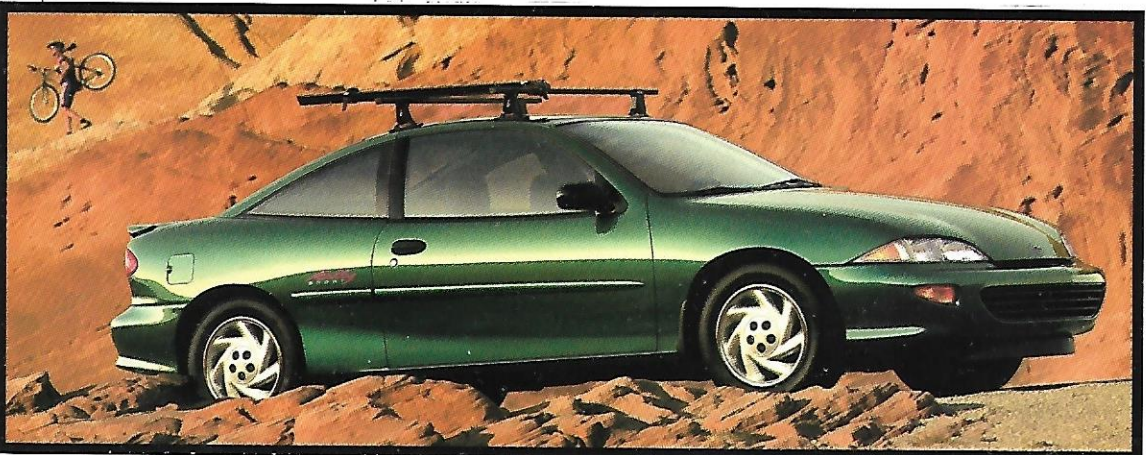
Cavalier LS Sedan

LS is the upscale Cavalier Sedan with a Sport Cloth interior, 4-speed automatic transmission and Electronic Traction Control.



Cavalier Coupe

This sleek coupe is actually the lowest priced Cavalier of all. A four-wheel anti-lock brake system (ABS) is standard in every 1998 Cavalier.



Cavalier RS Coupe

The eye-catching Rally Sport is the affordable Cavalier Coupe with its own distinctive personality.

Six Reasons Why Cavalier Is Such A Popular Choice.

Roomy sedans. Sporty coupes. And a convertible, too. Cavalier offers so many choices because we want you to be completely happy in your next new car.

The Cavalier Sedans

"A best buy." That's what the consumer publications say after they test-drive one of our sedans. More room than Ford Contour. Less scheduled maintenance than Honda Civic. A bigger engine than Toyota Corolla. And, less money than all three.* Remarkable.

The Cavalier Coupes

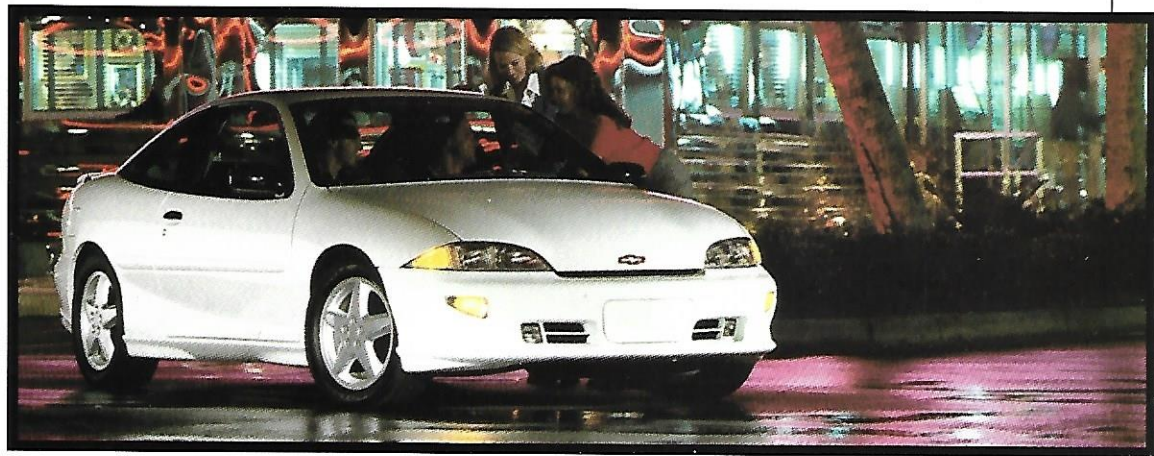
Here's where we combine impressive quality and thoughtful features with sporty two-door style. If you seek a hot-looking coupe at a great price, one of the two-door Cavaliers (Coupe, RS Coupe, Z24 Coupe) might be exactly what you had in mind.

The Cavalier Convertible

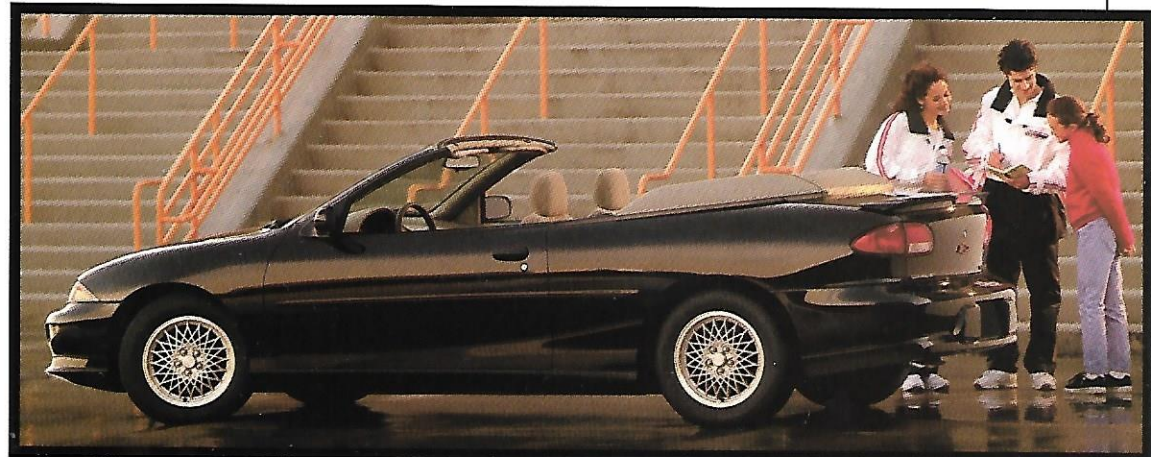
Cavalier Z24 Convertible — new for 1998 — is one cool top-down machine. Sunglasses recommended.

**Based on 1997 MSRP. 1998 prices not available at time of printing.*

Cavalier Z24 Coupe
Z24 Coupe is the Cavalier for enthusiasts. Features include a 16-valve engine and a specially tuned suspension. It's fun!



Cavalier Z24 Convertible
The new top-down version of Z24 has a very user-friendly power top and a glass rear window. Cool!





*Cavalier LS Sedan in Deep Purple Metallic.
The newly available rear spoiler and other options shown.*

Cavalier LS. Our Top-Of-The-Line Sedan.



You'll enjoy every minute behind the wheel of LS Sedan. This is the top-of-the-line Cavalier Sedan, with a standard 4-speed automatic transmission and Electronic Traction Control.

Strong, Smooth Performance

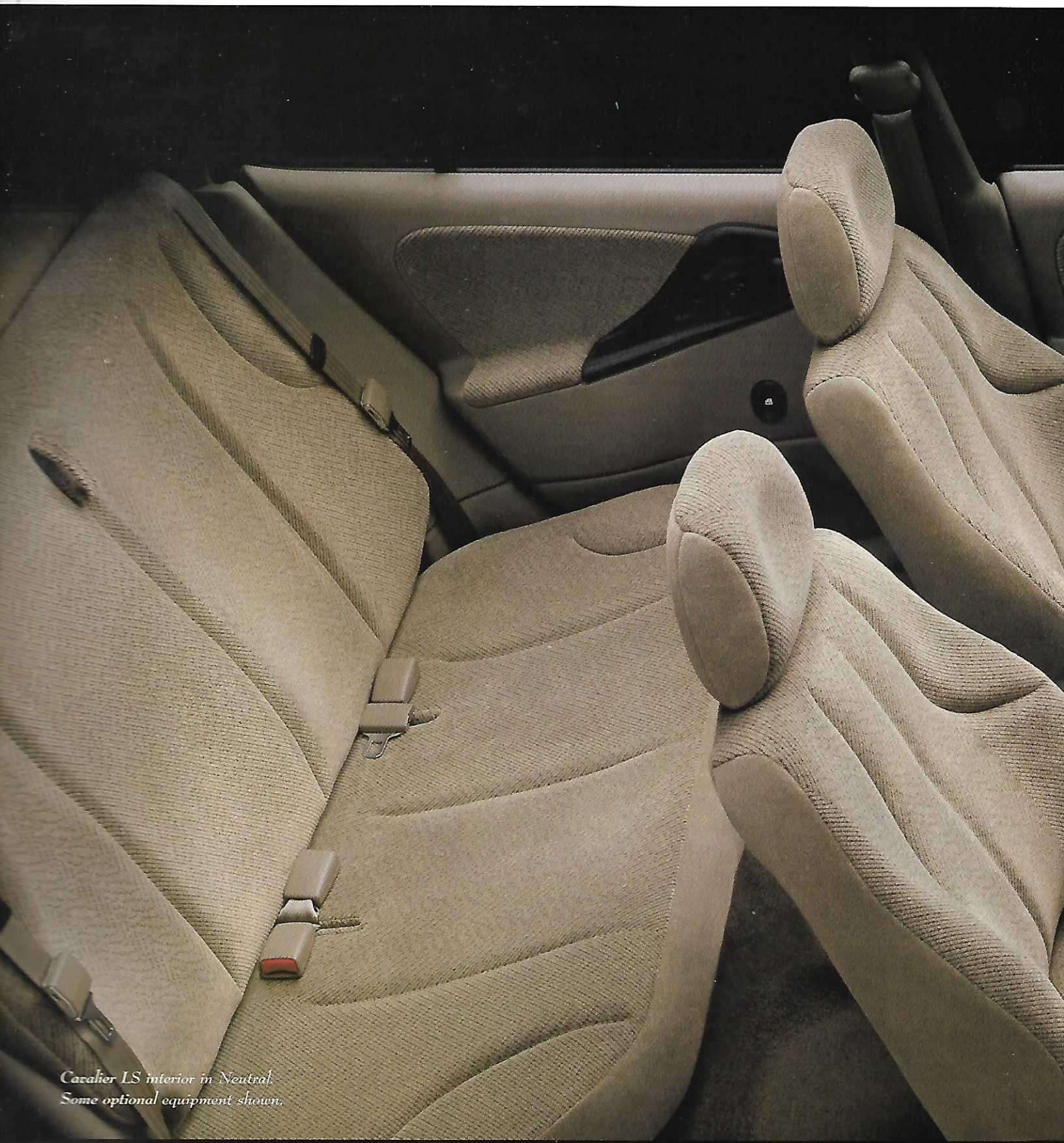
The performance of the 115-hp, 2.2 Liter engine is smooth, strong and quieter than before. Or, you can opt for a 150-hp, 2.4 Liter engine with dual overhead camshafts and 16-valve design.

Sleek, Sophisticated Style

Body-color bumpers are standard. Aluminum wheels are optional. You'll love the look — and the performance — of Cavalier LS Sedan.

LS Sedan Instrumentation

Bold analog instrumentation. Standard tachometer and trip odometer. The AM/FM stereo with CD player is optional.



*Cavalier LS interior in Neutral.
Some optional equipment shown.*

The LS Interior Makes A Great Impression.



Everything about LS Sedan is designed to please you. The Sport Cloth trim has a quality feel and texture. Room? There's more space for five than you'll find in any Corolla, Civic or Sentra sedan.

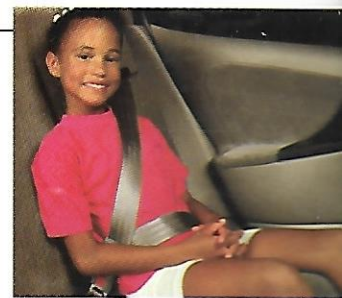
Thoughtful LS Features

LS standards include air conditioning, tachometer, trip odometer, covered visor mirrors with map straps and an AM/FM stereo with cassette player. For added versatility, there's a full-folding rear seat with a trunk pass-through.

Thoughtful LS Options

If the standard LS isn't thoughtful enough, there's an option package that includes power mirrors, and a Remote Keyless Entry system that will lock and unlock your doors and unlock the trunk. Power windows include a driver's Express-Down feature.

In every way, the Cavalier LS interior is thoughtfully designed to make you comfortable.



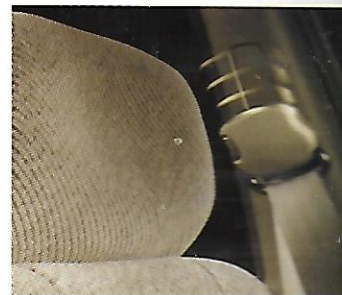
Child Security Rear-Door Locks

These door locks, when engaged, prevent the rear doors from being opened from the inside. Standard on all sedans.



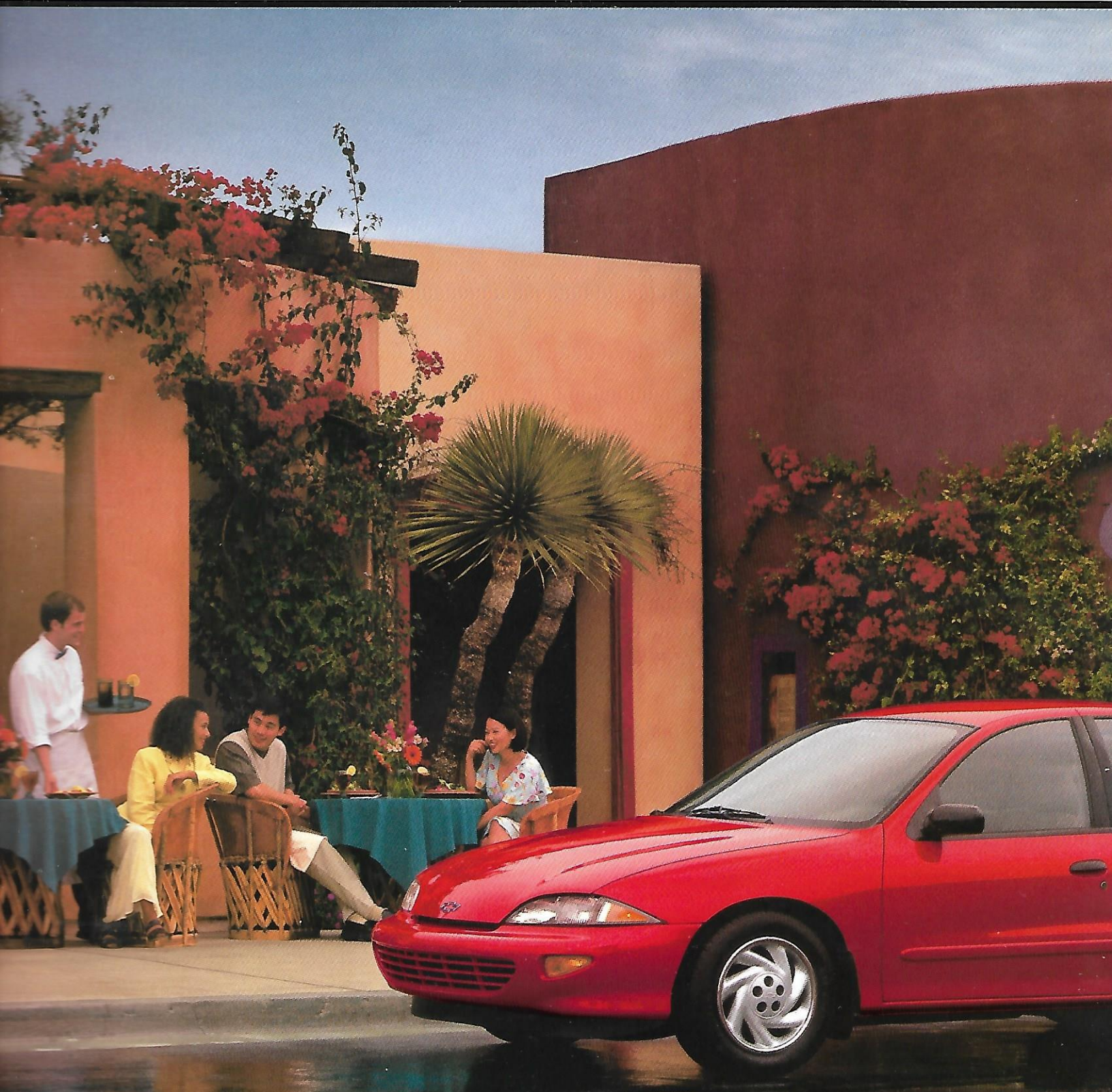
Full-Folding Rear Seat

The full-folding rear seat with trunk pass-through feature, standard in all Cavaliers, adds cargo-carrying versatility by accommodating long objects like skis or mountain bikes.



Shoulder Belt Height Adjuster

Standard. Front shoulder belt height adjusters (on Sedans) make wearing safety belts more comfortable.



Cavalier Sedan in Bright Red with Exterior Appearance Package and other options.

Cavalier Sedan. Easy To Own, Easy To Like.



There's a lot to like about Cavalier Sedan. It has a wonderfully low price. It has the features you'll appreciate — including anti-lock brakes, fold-down rear seat with trunk pass-through, and a standard theft-deterrent system.

Solid Structure = Great Car

The "architecture" of Cavalier includes a long 104.1-inch wheelbase, a wide stance and a body structure with exceptional rigidity. The benefit to you is impressive room for five, a confident feel on the road and a more quiet ride.

Cavalier Sedan has the features you need, at a price you can afford. That's Genuine Chevrolet. And, that makes life easier.

Supportive Comfort

Deeply contoured front bucket seats with adjustable head restraints add to Cavalier comfort. Convenience features include cup holders, in-door storage bins and a covered center storage compartment.



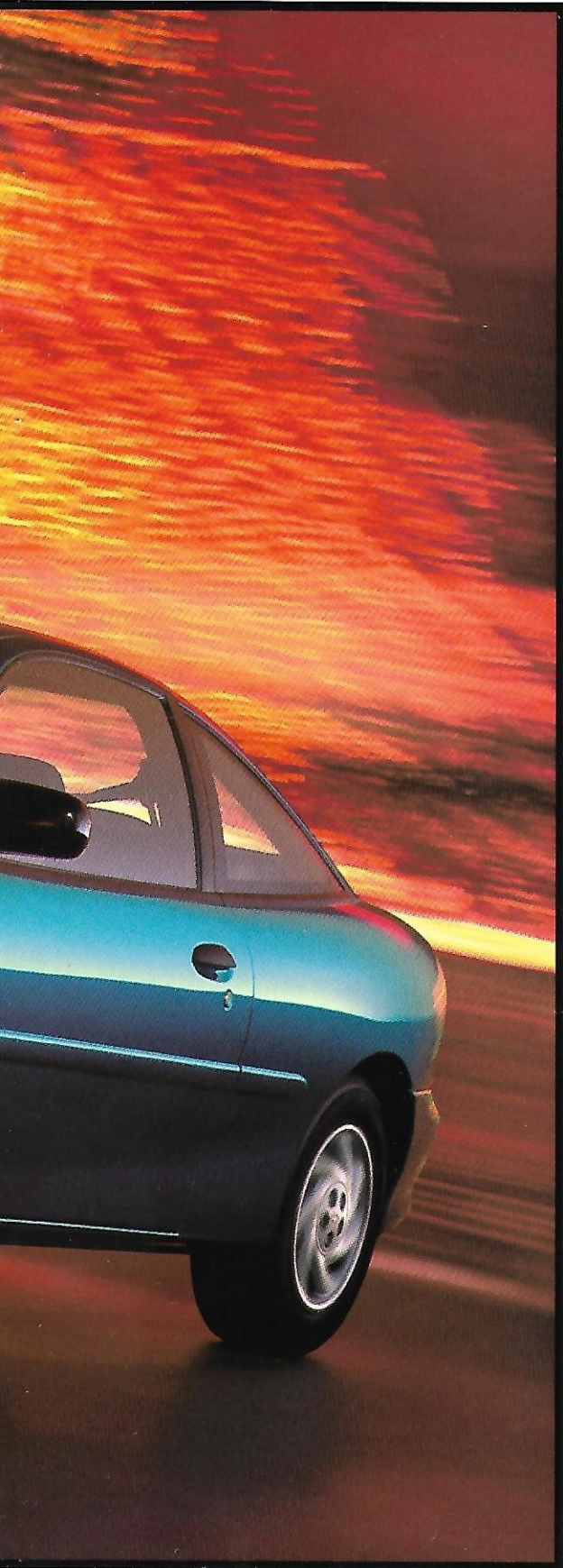
Rear-Seat Heat Ducts

Rear-seat passengers keep their toes warm in a Cavalier. Ducts route air under front seats, so everyone's comfortable.



*Cavalier Coupe in Aquamarine Blue Metallic.
Exterior Appearance Package and other optional equipment shown.*

The Coupe. Cavalier At Its Most Affordable.



Wouldn't it be nice to find a good-looking coupe that you could still afford to drive? Well, we made a Cavalier that looks like this (see photo). Then, you made Cavalier one of the best-selling coupes in America.

Low Price, High Value

The Coupe is actually the lowest priced of all the Cavalier models. Yet, all the neat things you want in a car are here — the responsive 2.2 Liter engine with Sequential Fuel Injection, Next Generation driver and front-passenger air bags* and a four-wheel anti-lock brake system (ABS).

Exterior Appearance Package

For just a little extra, you can select the optional Exterior Appearance Package, which includes body-color bumpers and protective body-side moldings, 15" Touring tires and bolt-on full wheel covers.

Cavalier is the fun-to-drive, easy-to-own coupe that fits in your budget.

**Always wear safety belts, even with air bags.*



Spacious Trunk

Cavalier Coupe features a roomy trunk with a carpeted load floor and low lift-over height. The optional cargo-area convenience net makes it easy to keep small packages secure.



Standard 5-mph Bumpers

Scuff- and ding-resistant charcoal-color bumpers are standard on Sedans and Coupes. Body-color bumpers are included in the optional Exterior Appearance Package.



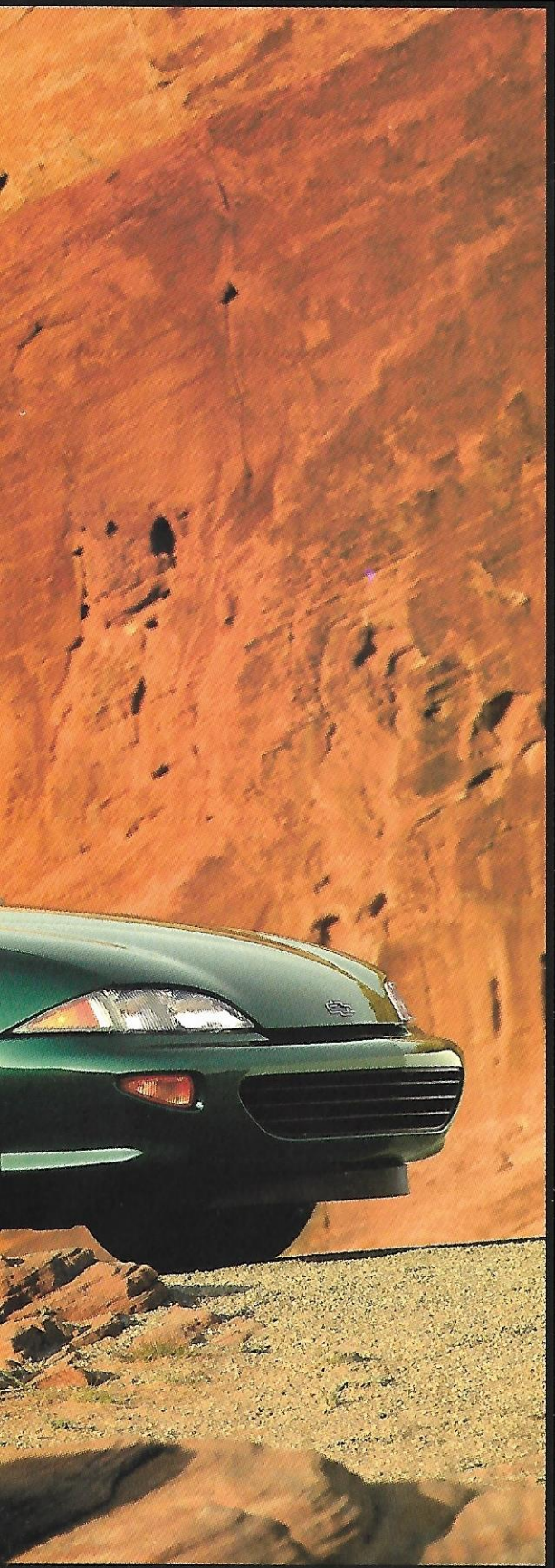
Passlock® Theft Deterrent

This totally passive theft-deterrent system is standard on every Cavalier. If an attempt is made to start your car without the proper key, the ignition system is disabled.



*Cavalier RS Coupe in Green Metallic.
Some optional equipment shown. Bike rack not included.*

RS Coupe. It's Got The Look.



When you choose the RS Coupe, you get a fun-to-drive Cavalier with some really neat extras.

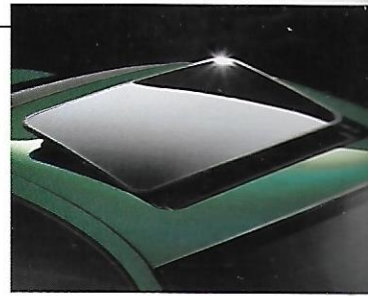
What Makes RS Special?

Lots. We start with a Cavalier Coupe (nice starting point) and add:

- Body-color bumpers, body-side moldings, "Rally Sport" exterior graphics and a sport-styled rear spoiler.
- 15" all-season Touring tires and bolt-on full wheel covers.
- "RS" graphics embroidered on head restraints, a tachometer, AM/FM stereo and variable intermittent wipers.

Extras You Can Add

You can get your RS Coupe with aluminum wheels and an AM/FM stereo with CD player. Very cool. And, best of all, the RS price is still very much "Genuine Chevrolet."



Electric Sunroof

This factory-installed power sliding sunroof is available on all coupes. A mirror-mounted map light is included.



Breakaway Outside Mirrors

These dual outside mirrors, standard on all models, are designed to allow realignment when bumped.



Remote Keyless Entry

This convenience option, which includes power door locks, makes it easy for you to lock or unlock doors, turn on interior lights, or unlock the trunk from up to 30 feet away.



*Cavalier RS Coupe interior in Graphite.
Some optional equipment shown.*

The Coupe Interior. Nice To Get Into.



Cavalier is a coupe you can really get comfortable in. It is designed to make driving fun. And, it has features you'll appreciate every day.

You'll Be Hugged

The front bucket seats surround you with contoured side bolsters, full foam cushioning, adjustable head restraints and manual four-way adjusters.

Little Things Mean A Lot

Thoughtful features that make Cavalier so easy to own include a single reversible key that starts the car, and locks or unlocks all doors and the trunk. Low-gloss interior finishes and tinted glass for all windows keep glare to a minimum. Analog gauges are easy to read and softly lit to enhance nighttime visibility.

Quality Surrounds You

You probably spend a good deal of time in your car. You should be comfortable with the look, the feel and the way things work. In the thoughtfully designed Cavalier, we think you will be.



Adjustable Safety Belt Guide Loops

These safety belt guide loops (on Coupes) make using safety belts more comfortable.



Three Cup Holders

The center console features two cup holders; and there's another one for rear-seat passengers.



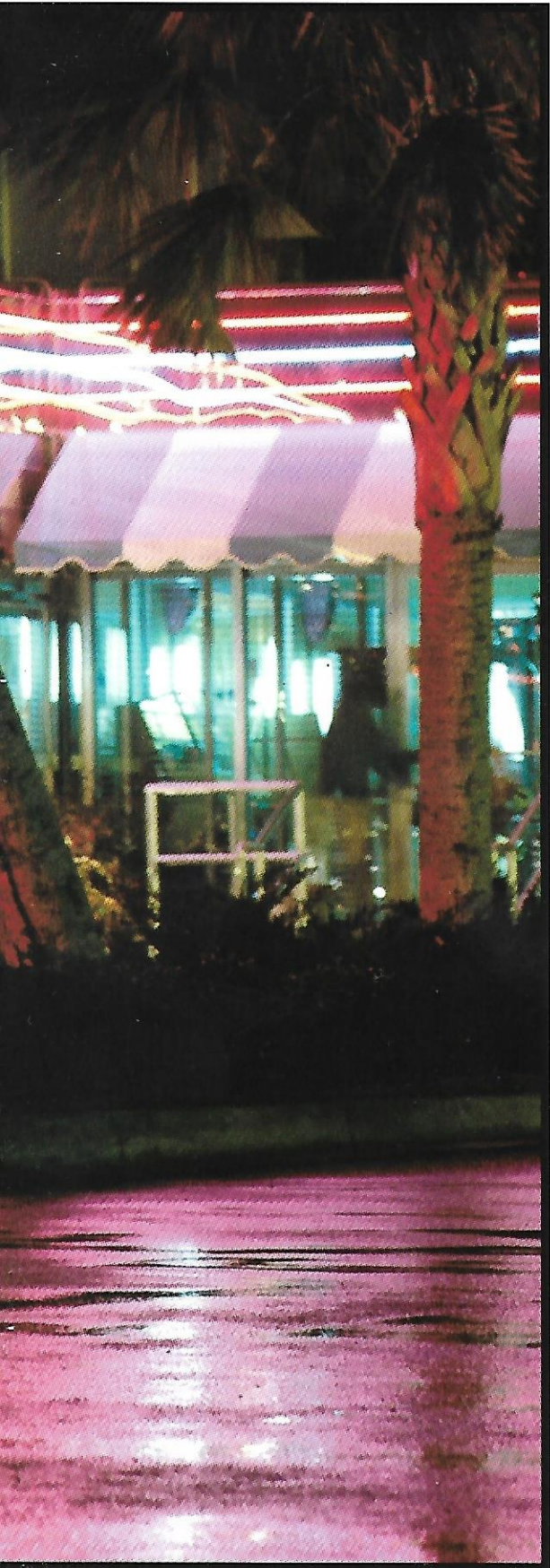
Scotchgard™ Protector

The Cavalier interior is beautiful and it is designed to stay that way with Scotchgard™ Protector on seat fabrics and door trim.



Cavalier Z24 Coupe in Bright White.

Z24 Coupe. Password For Performance.



Sixteen valves. 2.4 Liters. 150 horsepower. Cavalier Z24 is the high-style coupe with all the right numbers.

To Shift, Or Not To Shift?

You decide. Transmission choices include a precise-shifting 5-speed manual or an optional, electronically controlled 4-speed automatic with Electronic Traction Control. Either way, the Twin Cam engine delivers its smooth, strong horsepower through a delightfully wide rpm range.

Tuned Ride, Tuned Looks

A tuned Level II Sport Suspension and 16" Performance tires provide Z24 Coupe with both a refined ride and agile response.

Z24's aggressive appearance is enhanced by 5-spoke aluminum wheels, exclusive-to-Z24 fascias, integral foglamps and lower body extensions all around. A rear spoiler adds to the unique look of Z24.

If you're looking for performance, at a price you can afford, look into a Z24. It rates big on the "fun-for-the-money" scale.



DOHC Power

A 150-hp, Twin Cam engine — with Sequential Fuel Injection and balance shafts — delivers the smooth and powerful response you expect.



Precise Communications

Analog gauges (with tachometer and trip odometer) communicate information at a glance. An adjustable steering column is standard on Z24.



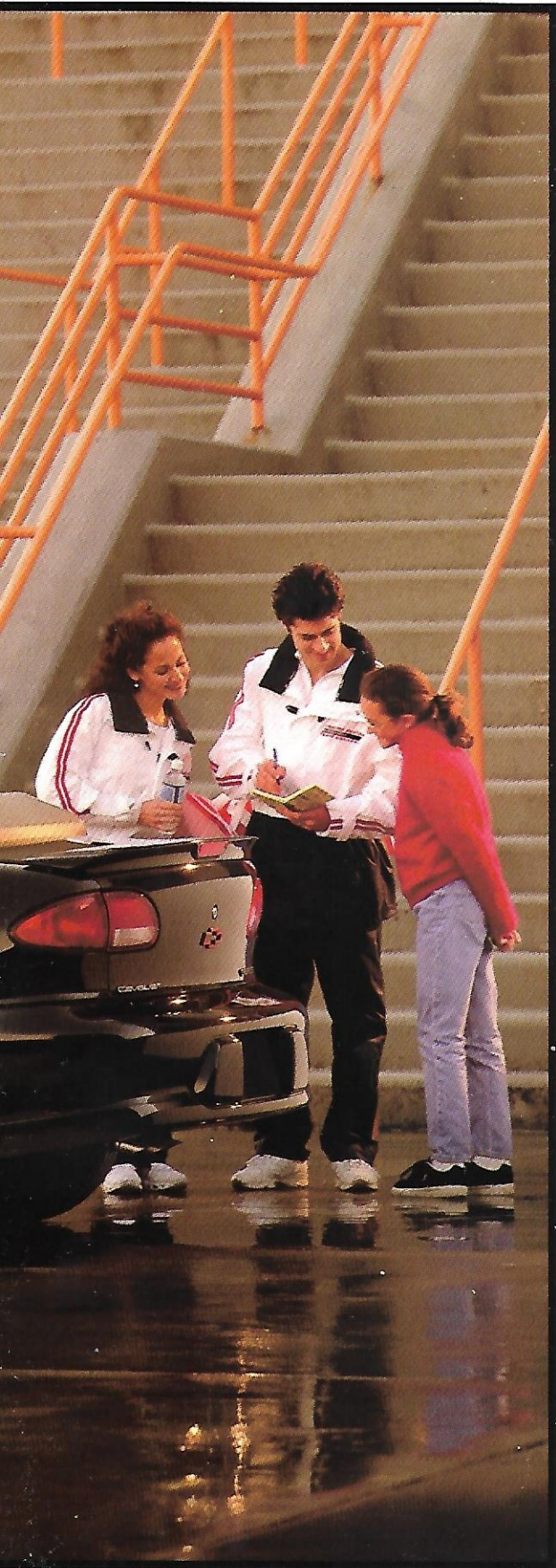
You'll Be Spoiled

The sporty Z24 appearance is amplified by the neatly contoured rear deck spoiler.



Cavalier Z24 Convertible in Black, shown with Liz Punsalan and Jerod Swallow, champion ice dancers and winners of a 1997 Cavalier Convertible for scoring the most "Perfect 6" scores in national competition. Chevrolet is the Official Vehicle of the U.S. Figure Skating Team.

The Convertible. A Very Cool Z24.



The convertible Z24 is brand-new for 1998, and ready to take your breath away. In this very special Z24, you'll enjoy Twin Cam performance and a sporty exterior appearance with a standard rear spoiler. Inside, there's room for five.

You'll Love It All Year Long

Z24 Convertible has a power top with a full headliner to help minimize road noise and a glass rear window. The trunk includes a pass-through feature (with folding rear seat) for added cargo-carrying versatility.

A Sporty Interior, Too

Contoured bucket seats. Full floor console. And, a choice of Sport Cloth fabric or an optional Arctic White all-vinyl interior. Very cool!

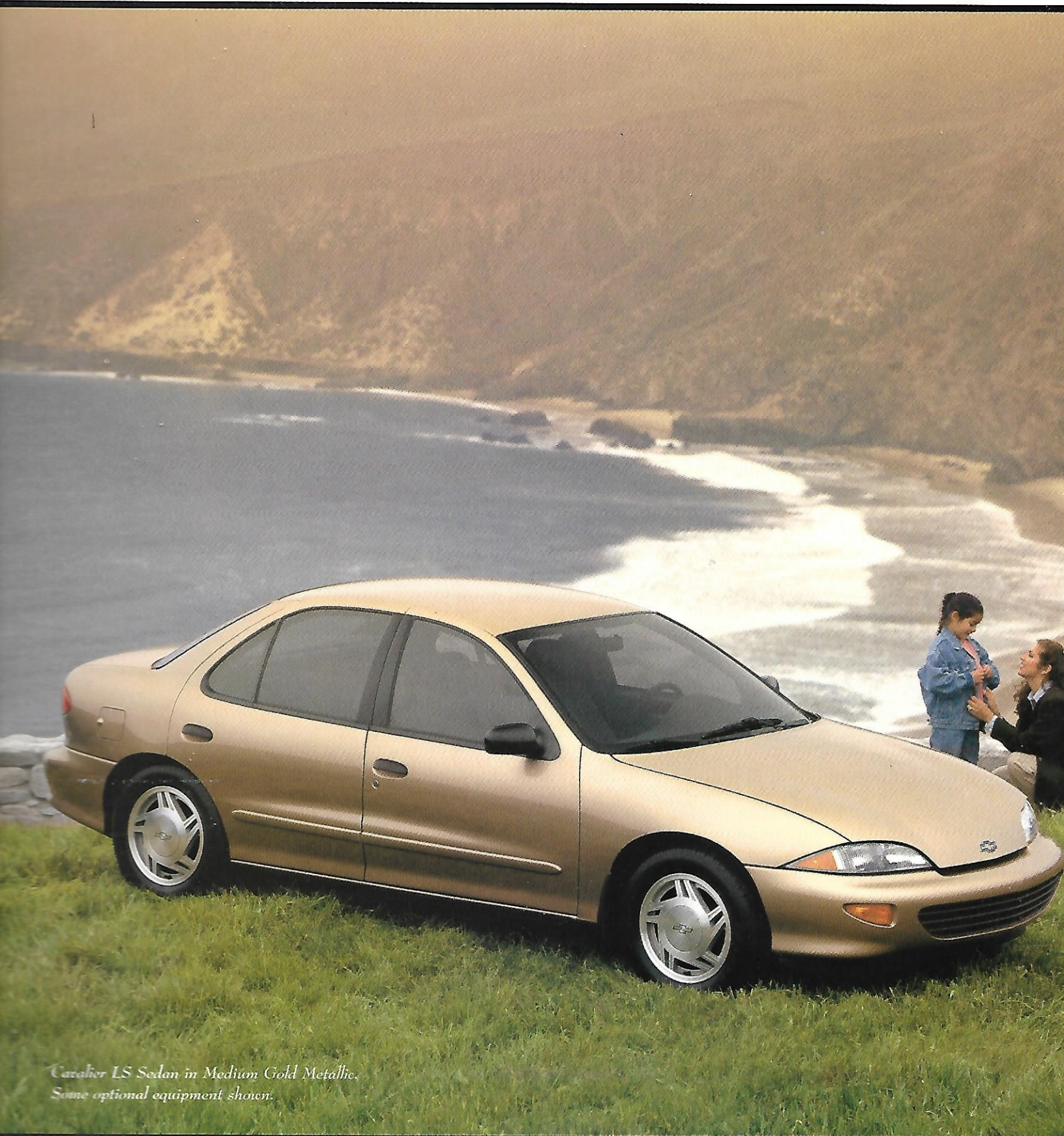
Z24. Convertible. It's a new combination for fun.



Stereo With CD Player
The optional AM/FM stereo with CD player includes speed-compensated volume, automatic tone control, premium speakers, digital clock and a TheftLock feature.

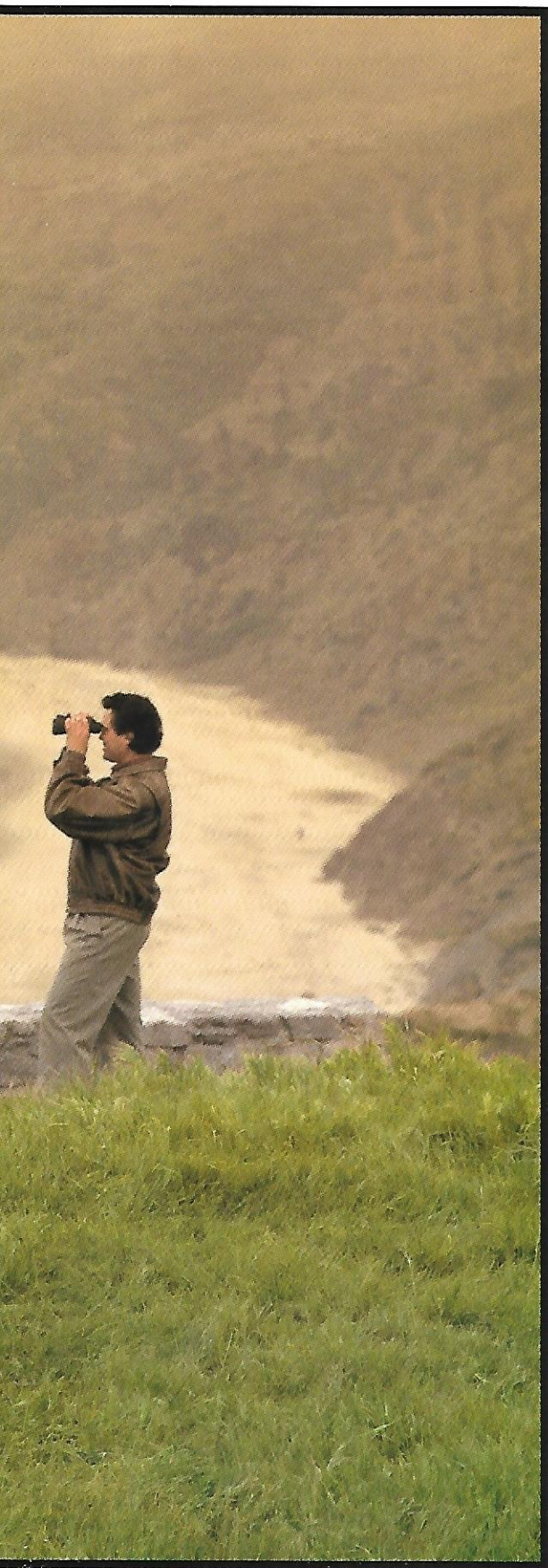


Easy Up ... And Down
A power top, with a convenient center latch that lets you move from "top up" to "top down," without ever leaving the driver seat, is standard. The rear windows go up and down automatically with the top. A three-piece top boot provides a beautiful top-down appearance.



*Cavalier LS Sedan in Medium Gold Metallic.
Some optional equipment shown.*

Cavalier Quality Goes The Distance.



One-hundred-thousand miles.

It's really no big deal in the quality-built Chevy Cavalier.

Cavalier Beats The Imports

You can travel up to 100,000 miles before the first scheduled tune-up.*

The extended-life engine coolant isn't scheduled for its first change until five years or 150,000 miles (whichever comes first).* That's what we mean by "easy to own." And, that's ease of maintenance no Toyota, Nissan or Honda can match.

More Easy-To-Own Features

Long Life automatic transmission fluid is not scheduled for its first change until the 100,000-mile mark, under normal conditions.* There are no engine timing adjustments. The body sheet metal is warranted against rust-through for six years or 100,000 miles (whichever comes first).

Cavalier quality goes the distance.

And, isn't that exactly what you want?

**Maintenance needs vary with different uses and driving conditions. See owner's manual for more information.*



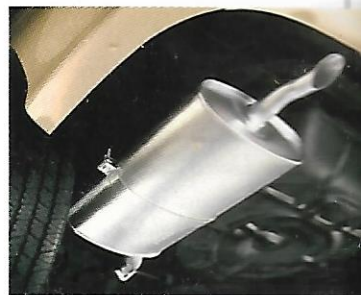
100,000 Miles Before The First Tune-Up

*The engine in a Cavalier is so advanced that you can travel up to 100,000 miles before the first scheduled tune-up.**



Two-Side Galvanized Steel

This high-quality steel is used for all body panels except the Sedan roof, for excellent protection against corrosion.



Stainless-Steel Exhaust

Here's another reason the 1998 Cavalier is so easy to own. A stainless-steel exhaust system (with an aluminized coating on muffler and tailpipe) is designed to resist corrosion.

Here's What Makes Cavalier So Easy To Own.

A Solid, Strong Foundation

Rigid, unitized body/frame construction helps make Cavalier strong and quiet. This foundation is an important reason why Cavalier has an exceptionally smooth ride, and feels so solid, stable and well-built.

Remote Keyless Entry

A convenience option that makes it easy to lock or unlock doors, turn on interior lights, and unlock the trunk from up to 30 feet away. Get in — and get going — fast.

Convenience Features

Standard interior convenience features include cup holders, in-door storage bins, a center console, tinted glass and side-window defoggers. A rear-window lockout feature is included on sedans equipped with power windows.

More Trunk Space Than Expected

A large 13.0 cu. ft. trunk is an important reason why Cavalier Sedan is so popular with so many families.

5-mph Bumpers

Impact-absorbing front and rear bumpers exceed Federal barrier test requirements and feature resilient covers, to resist minor dings.

Dinghy-Towing

Cavalier has been designed with four-wheel dinghy-towing in mind (with 4-speed automatic or 5-speed manual transmissions only). So, if you've got an RV, it's easy to take your Cavalier along for the ride. See your owner's manual for more specific information.

Delco Electronics Stereo Sound

Features of the optional, uplevel AM/FM stereo (with cassette player or CD player) include:

- Premium front coaxial speakers
- Speed-compensated volume (as the car's speed increases, radio volume increases)
- Automatic tone control, which tailors equalization to the type of program being heard.

Theatre Lighting

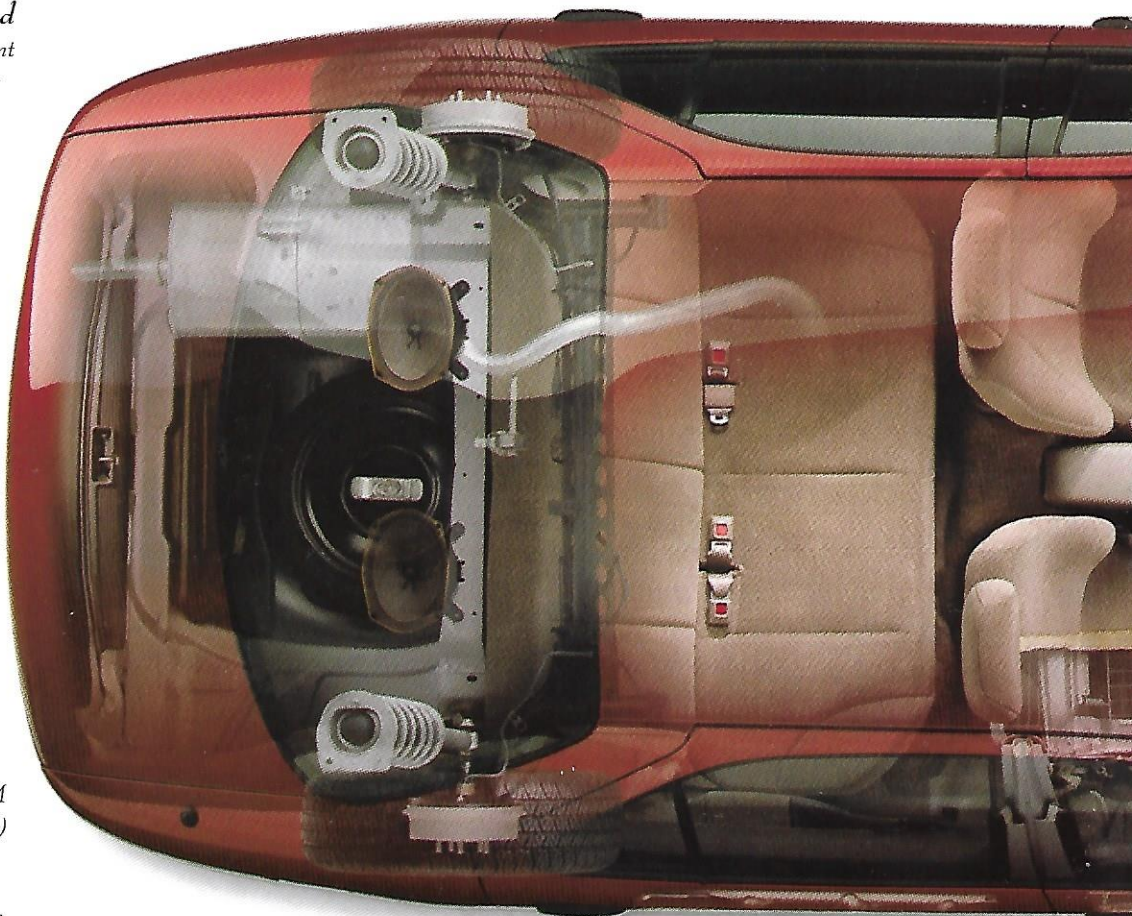
"Theatre lighting" is another unexpected convenience feature you'll find in every Cavalier. The interior dome light starts out bright when you open the door, and gradually dims as you prepare to drive away.

Battery-Run-down Protection

This system automatically shuts off interior lights (should you forget to do so) after the car has been sitting with the ignition off for 20 minutes. A maintenance-free battery is also standard.

Next Generation Driver And Front-Passenger Air Bags

Standard on all models. Air bags supplement the lap/shoulder safety belt system to help restrain the driver and front passenger in the event of a moderate to severe frontal impact. Always wear safety belts, even with air bags. Children are generally safer riding in the back seat (see page 27 for more information).



**Full Foam Contour Seats
with Scotchgard™ Protector**

Scotchgard™ Protector, on cloth seats and door trim, is standard, for easy cleanup and soil resistance.

Passlock Theft-Deterrent

This totally passive theft-deterrent system is standard on every Cavalier. If an attempt is made to start your car without the proper key, the ignition system is disabled. A remote hood release and laser-etched VIN plate are also standard.

Four-Wheel ABS

The GM-developed ABS VI four-wheel anti-lock brake system is standard on all Cavalier models. You'll pay hundreds of dollars for the ABS option in many other small cars.

Front-Wheel Drive

The combination of front-wheel drive and all-season tires (with built-in tread wear indicators) helps provide impressive traction and driving stability in adverse weather conditions. Power rack-and-pinion steering, standard on all models, makes in-city parking and maneuvering easier.

The Technology of Quiet

The engine floats on a hydraulic mount. This system actually tunes certain engine noises to levels inaudible to the human ear.

2.2 Liter Engine

This standard engine, newly refined to be smoother and quieter than before, delivers 115 hp at 5000 rpm. Features include Sequential Fuel Injection, for excellent driveability, and a single-belt accessory drive designed to never need adjustment.

**Breakaway Outside
Rearview Mirrors**

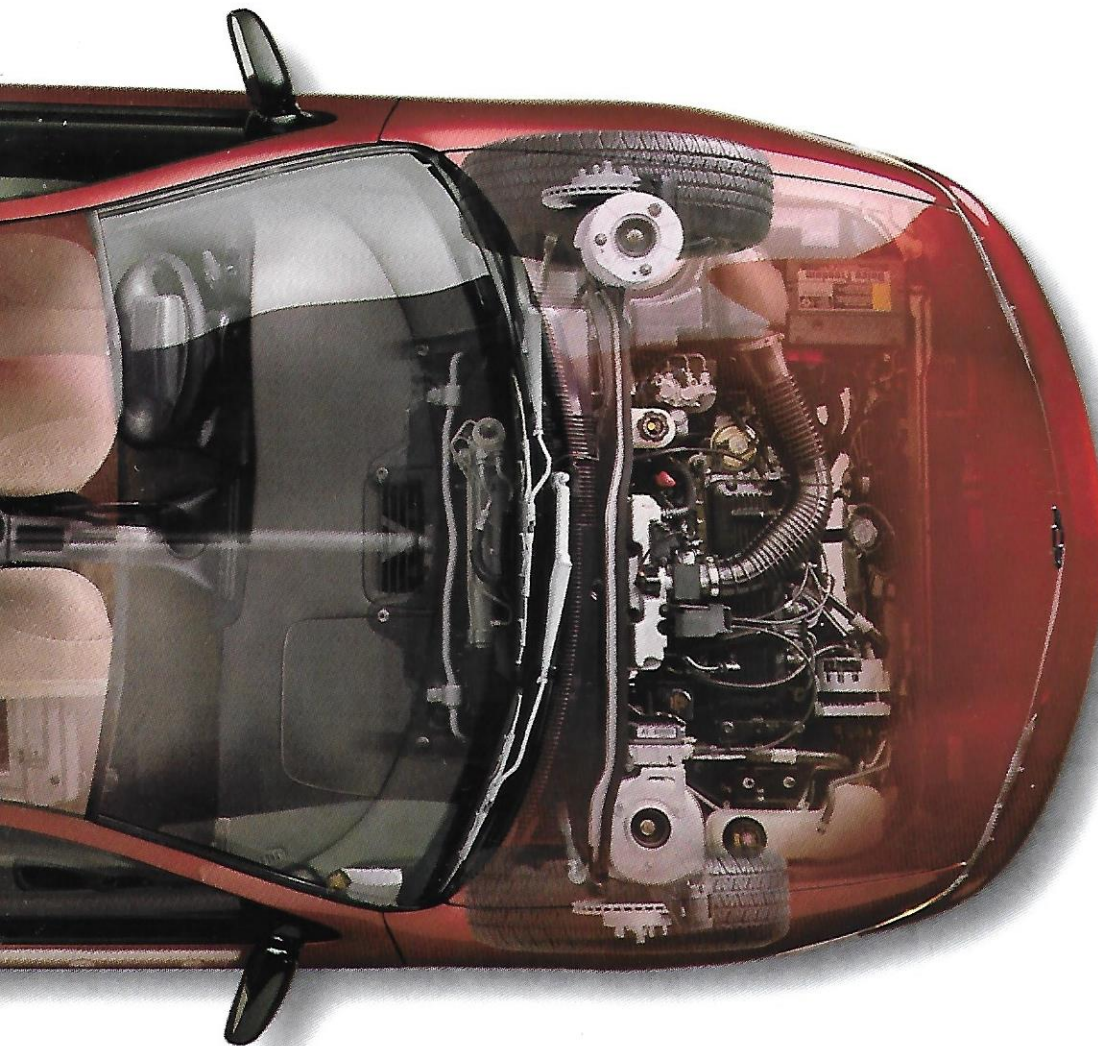
These mirrors (standard on all models) are designed for easy realignment when bumped.

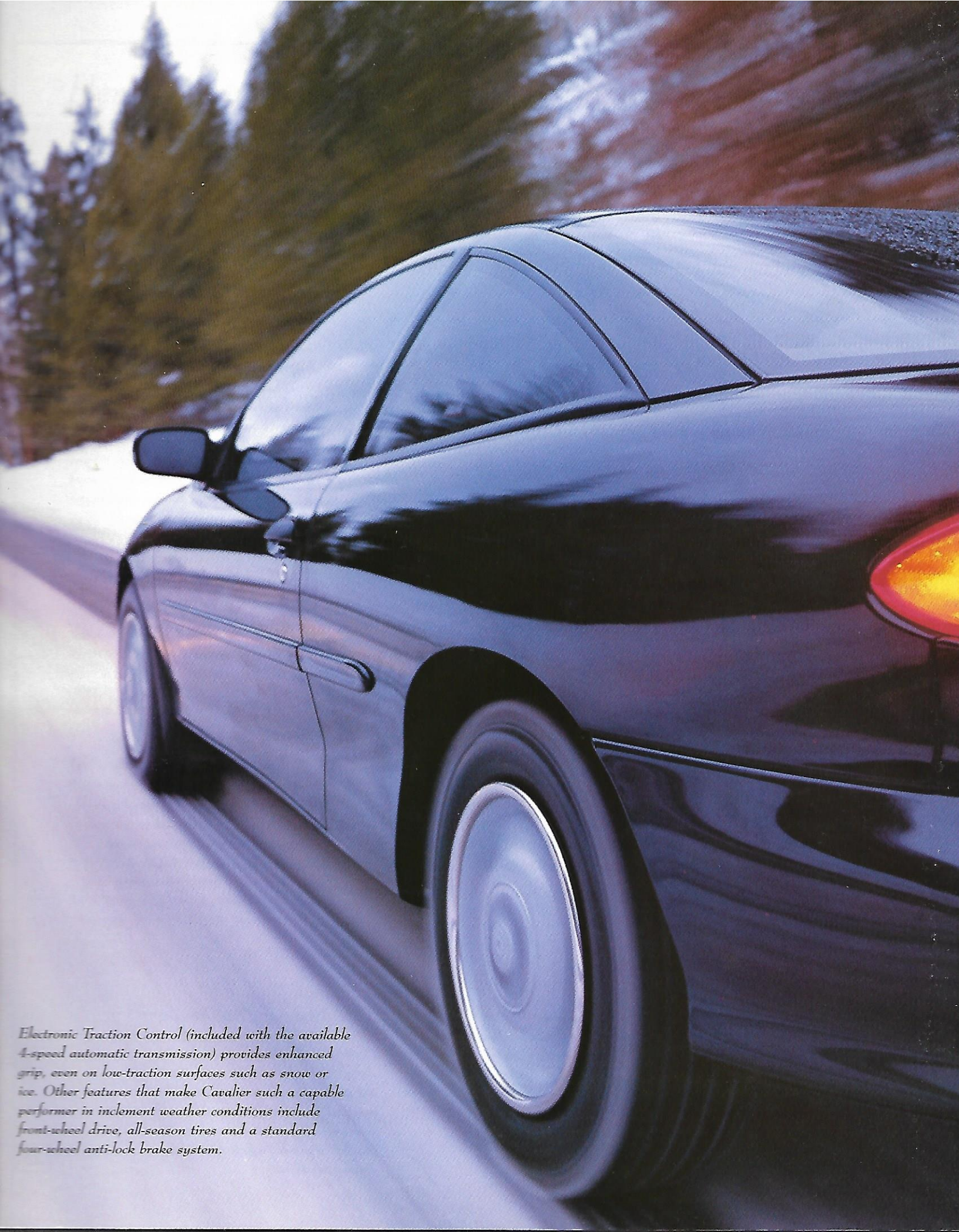
Electronic Traction Control

Go in the snow and other adverse weather conditions with Electronic Traction Control. It is included when the optional 4-speed automatic transmission is selected.

4-Speed Automatic Transmission

An electronically controlled 4-speed automatic transmission is optional (standard on LS Sedan). You'll enjoy excellent acceleration, low engine rpm at highway speed, and computerized shift control for precise, virtually seamless shifting. A brake/transmission shift interlock is included with both 3-speed and 4-speed automatics.





Electronic Traction Control (included with the available 4-speed automatic transmission) provides enhanced grip, even on low-traction surfaces such as snow or ice. Other features that make Cavalier such a capable performer in inclement weather conditions include front-wheel drive, all-season tires and a standard four-wheel anti-lock brake system.

Get More Safety Features For Your Money.

You shouldn't have to buy an expensive car to get the safety you need. That's why a comprehensive safety package is standard in every 1998 Cavalier.

Standard Anti-Lock Brakes

In a Cavalier, four-wheel ABS is standard equipment. Also standard: Next Generation driver and front-passenger air bags,* child security rear-door locks on four-door models and a high-strength steel safety cage. Cavalier also features an advanced body/chassis design that helps divert energy away from the passenger compartment in a frontal collision.

**A Special Note To Parents*

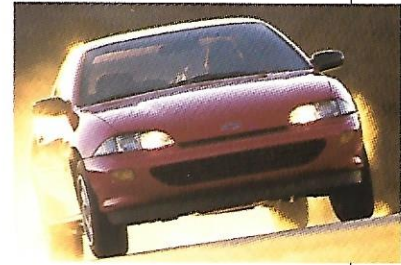
Children are generally safer if they ride in a rear seat using the appropriate child safety seats and restraints, which is why General Motors recommends that child safety seats be properly secured in a vehicle's rear seat. See your owner's manual and child safety seat's instructions for more information.

**Always wear safety belts, even with air bags.*



Four-Wheel Anti-Lock Brakes (ABS)

ABS reduces wheel lockup while braking, and is designed to help you maintain steering control and help prevent skidding on most slippery surfaces. Also standard: audible wear sensors for the front disc brake pads.



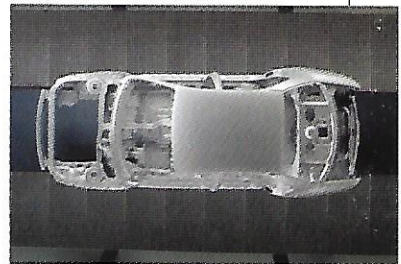
Daytime Running Lamps (DRL)

With this standard feature, halogen headlamps automatically come on at a reduced intensity when you turn on the ignition. This provides improved daytime visibility of your vehicle to other drivers. At night, headlamps operate normally when turned on.



Rear-Seat Safety Belt Child Comfort Guides

Rear-seat safety belt child comfort guides are standard (except Convertible). These guides make wearing safety belts more comfortable for older children who have outgrown available child restraints. Rear outboard safety belts (with cinch capability) are designed to accommodate child seats without the use of any add-on hardware or clips. See owner's manual for more information.



Safety-Cage Construction

A high-strength steel safety cage (with reinforced floor and body sills, roof construction and pillars, and steel side door beams) surrounds the entire Cavalier Sedan/Coupe passenger compartment.



*Cavalier Z24 Coupe in Bright White.
Electric sunroof and other options shown.*

Proud sponsor 

Genuine Customer Care. You Never Travel Alone.

New Vehicle Limited Warranty

This warranty is for GM vehicles registered in the United States. Please see your Chevrolet dealer for complete terms and conditions of this New Vehicle Limited Warranty.

What Is Covered For 3 Years/36,000 Miles:*



The complete vehicle



Sheet-metal coverage:

- Corrosion coverage
- Rust-through coverage*



Tires



Repairs made to correct any vehicle defect



Towing to your nearest Chevrolet dealership



No charge for warranty repairs.

*Whichever comes first. *6 years or 100,000 miles, whichever comes first.

Courtesy Transportation

Customers who purchase or lease a 1998 Chevrolet Cavalier are eligible for Courtesy Transportation (at no charge) when their vehicles are left at a participating dealership for repairs covered

under the 3-year/36,000-mile New Vehicle Limited Warranty. Courtesy Transportation, at participating dealers only, may include shuttle service, expense reimbursement or, if the repair requires

the vehicle to stay at the dealership overnight, vehicle rental. Actual services may vary at the election of the participating dealer. See your dealer for details.

Roadside Assistance*

Roadside Assistance service is provided through a toll-free 800 number, 24 hours a day, 365 days a year. Roadside Assistance advisors can assist with minor mechanical problems over the phone or coordinate a variety of services through Chevrolet dealers' preferred service providers.

Basic Care Provides:



Toll-free access
1-800-CHEV-USA



Basic over-the-phone technical advice



Free towing to nearest dealer for warranty repairs



Dealer services at reasonable cost (i.e., wrecker services, locksmith/key service, glass repair, etc.).

*Roadside Assistance membership is free. Some services may incur costs. Courtesy Care is available to retail, retail lease and corporate lease customers operating 1994 and newer Chevrolet vehicles for a period of 3 years/36,000 miles, whichever comes first. All Courtesy Care services and associated costs must be prearranged by Chevrolet Roadside Assistance or Dealer Service Management and must be driver-initiated. Basic Care and Courtesy Care are not part of or included in the coverage provided by the New Vehicle Limited Warranty. Chevrolet reserves the right to modify or discontinue Basic Care and Courtesy Care at any time. See dealer for complete details of the Chevrolet Roadside Assistance Program.

Courtesy Care, Which Applies For 3 Years/36,000 Miles, Provides:



Basic Care services



Free fuel delivery



Free locksmith/key service (when keys are lost on road or locked inside)



Free non-warranty towing



Free flat tire change service



Free jump start.

Cavalier Buyer's Guide

Preferred Equipment Groups

NOTE: These Preferred Equipment Groups (PEGs) help simplify the buying process. Just choose the 1998 Cavalier PEG containing the equipment you desire. You may also add selected individual options (see Standards & Options chart for model availability). Some restrictions may apply. Please see your salesperson for details.

Preferred Equipment Group	Coupe		RS	Sedan	LS	Z24
	1	2				
Cargo-Area Convenience Net	■	■	S	■	S	S
Carpeted Front and Rear Floor Mats	■	■	S	■	S	S
Body-Side Moldings			S		S	S
Dual Covered Visor Mirrors with Map Straps	■	■	S	■	S	S
Easy-Entry Passenger Seat	■	■	S			S*
Front Mud Guards	■	■	S	■	S	
Mechanical Trunk Opener	■	■	S	■	S	
Intermittent Variable Wipers	■	■	S	■	S	S
Electronic Speed Control with Resume Speed		■	S		S	S
Exterior Appearance Package (includes body-color bumpers and body-side moldings, 15" tires and wheel covers)	■	■		■		
Tilt-Wheel™ Adjustable Steering Column	■		S		S	S
Dual Electric Remote Mirrors	■		■		■	S
Remote Keyless Entry and Trunk Release (includes power door locks)			■		■	S
Power Windows with Driver's Express-Down Feature			■		■	S

*Z24 Coupe only. ■ — Included in Preferred Equipment Group. S — Standard.

Standards & Options

NOTE: Some individually available options listed below may be included in specific Preferred Equipment Groups (see chart, above). Some restrictions may apply. Please see your salesperson for details.

Exterior	Coupe/ Sedan			
	RS	LS	Z24	
Body-side moldings, color-keyed	P	S	S	S
Dual breakaway sport mirrors (left-hand remote)	S	S	S	S
Exterior Appearance Package (includes body-color bumpers and body-side moldings, 15" tires and wheel covers)	P	—	—	—
Foglamps	—	—	—	S
Mud guards, front	P	S	S	—
Rear spoiler	—	S	O	S
RS Appearance Package	—	S	—	—
Interior				
Air conditioning (w/CFC-free refrigerant)	O	O	S	S
Covered visor mirrors with map straps	P	S	S	S
Daytime Running Lamps	S	S	S	S
Electric rear-window defogger	O	O	O	O*
Floor console with armrest and storage	S	S	S	S
Full-folding rear seat	S	S	S	S

Interior (continued)	Coupe/ Sedan	RS	LS	Z24
Next Generation driver and front-passenger air bags	S	S	S	S
Passlock theft-deterrent system	S	S	S	S
Power door locks	O	O	O	S†
Power windows with driver's Express-Down feature	—	O	O	S
Scotchgard™ Protector on cloth seats, door trim	S	S	S	S
Seats: Cloth bucket	S	S	—	—
Seats: Sport Cloth bucket	—	—	S	S
Seats: Vinyl buckets	—	—	—	O**
Sunroof, electric (includes map lights)	O††	O	—	O††
Tachometer	—	S	S	S

*Standard on Convertible. †Included with Remote Keyless Entry.

**Convertible only. ††Coupe only.

Delco Electronics Sound Systems

NOTE: Sound systems include an Electronically Tuned Receiver (ETR) with AM/FM stereo, seek-scan, digital clock and four Extended-Range speakers.

Stereo: AM/FM	S	S	—	—
Stereo: AM/FM with cassette player	O	O	S	S
Stereo: AM/FM with cassette player, automatic tone control, speed-compensated volume, premium front coaxial speakers and TheftLock security system	O	O	O	O
Stereo: AM/FM with compact disc player, automatic tone control, speed-compensated volume, premium front coaxial speakers and TheftLock security system	O	O	O	O

Power Teams/Chassis

4-cylinder engine: 2.2 Liter with Sequential Fuel Injection	S	S	S	—
4-cylinder engine: 2.4 Liter, Twin Cam with Sequential Fuel Injection	—	—	O	S
Transmission: 5-speed manual	S	S	—	S
Transmission: 3-speed automatic	O	—	—	—
Transmission: 4-speed automatic*	O	O	S	O
Brakes: 4-wheel anti-lock system (ABS)	S	S	S	S
Brakes: Power front disc/rear drum	S	S	S	S
Power rack-and-pinion steering	S	S	S	S
Stainless-steel exhaust system	S	S	S	S

*Includes optional Electronic Traction Control.

Wheels/Tires

Full wheel covers, bolt-on 14"	S	—	—	—
Full wheel covers, bolt-on 15"	O*	S	S	—
15" aluminum wheels	—	O	O	—
15" cross-lace aluminum wheels	—	—	—	S†
16" aluminum wheels	—	—	—	S**
P195/70R-14 all-season tires	S	—	—	—
P195/65R-15 all-season Touring tires	O*	S	S	S†
P205/55R-16 Performance tires	—	—	—	S**

S — Standard. O — Optional. P — Available as part of a Preferred Equipment Group only. *Requires optional Exterior Appearance Package. †Convertible only. **Coupe only.

Cavalier Colors And Trim

Exterior Colors



Bright Aqua Metallic

Available interiors: Graphite, Medium Gray, Neutral, Arctic White.



Bright White

Available interiors: Graphite, Medium Gray, Neutral, Arctic White.



Medium Opal Blue Metallic

Available interiors: Graphite, Medium Gray, Arctic White.
(Not available on RS.)



Medium Gold Metallic

Available interiors: Graphite, Neutral, Arctic White.
(Not available on RS.)



Deep Purple Metallic

Available interiors: Graphite, Medium Gray, Neutral, Arctic White.



Bright Red

Available interiors: Graphite, Medium Gray, Neutral, Arctic White.
(Not available on RS.)

LS and Z24 Fabrics

Graphite with Red Inserts
(Z24 only)

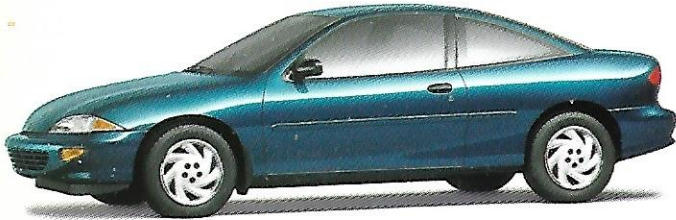
Graphite with Teal Inserts
(LS only)

Neutral

Medium Gray



Wheel Choices



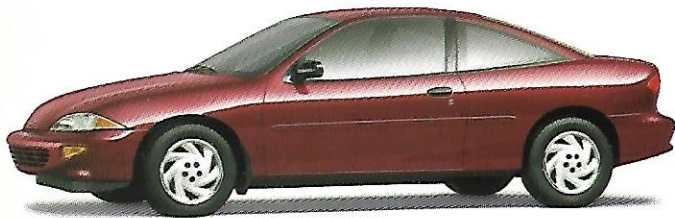
Aquamarine Blue Metallic

Available interiors: Graphite, Medium Gray.
(Not available on RS or Z24 Convertible).



Green Metallic

Available interiors: Graphite, Medium Gray, Neutral, Arctic White.



Cayenne Red Metallic

Available interiors: Graphite, Medium Gray, Neutral.
(Not available on RS or Z24 Convertible).



14" wheel cover.
Standard on Cavalier.



15" wheel cover. Standard
on Cavalier RS and LS.



15" aluminum wheel.
Optional on Cavalier RS and LS.



16" aluminum wheel.
Standard on Z24 Coupe.



15" "cross-lace" aluminum wheel.
Standard on Z24 Convertible.



Black

Available interiors: Graphite, Medium Gray, Neutral.

Coupe And Sedan Fabrics

Graphite

Neutral

Medium Gray

Arctic White
(Convertible only)



Z24 Vinyl

Additional Information

Data

Exterior Dimensions (in.)	Coupe	Sedan	Conv.
Wheelbase	104.1	104.1	104.1
Length (overall)	180.7	180.7	180.7
Width (overall)	68.7	67.9	68.7
Height (overall)	53.0	54.7	53.7

Interior Dimensions (in.)

Headroom — front	37.6	38.9	38.1
Headroom — rear	36.6	37.2	37.6
Legroom — front	41.9	41.9	42.1
Legroom — rear	32.7	34.4	32.6
Hip room — front	50.0	50.8	50.0
Hip room — rear	49.5	50.6	47.8
Shoulder room — front	53.9	54.6	53.9
Shoulder room — rear	54.9	53.9	47.1

Capacities

Passenger capacity	5	5	5
Luggage capacity (cu. ft.)	13.2	13.6	10.5
Fuel tank capacity (gal.)	15.2	15.2	15.2

Trailer^{ing}*

Trailer classification	Light	Light	—
Gross trailer weight (lbs., up to)	1000	1000	—
Maximum tongue load (lbs.)	100	100	—

*Trailer^{ing} recommended with available 2.4 Liter engine and 4-speed automatic transmission only. Trailer^{ing} not recommended with Convertible. Please see owner's manual.

NOTE: Tire chains should not be used on Cavaliers equipped with P195/05R-15 or P205/55R-10 tires because they could cause damage to these vehicles.

A Word About ...

GM Protection Plan

The available GM Protection Plan offers service protection in addition to that provided by GM's New Vehicle Limited Warranty. Ask your dealer about it. Coverage available only in the U.S. and Canada.

Engines

Chevrolets are equipped with engines produced by different operating units of GM, its subsidiaries or suppliers to GM worldwide.

Corrosion Protection

Chevrolets are designed and built to resist corrosion. All body sheet-metal components are warranted against rust-through corrosion for 6 years or 100,000 miles, whichever comes first. Application of additional rust-inhibiting materials is not required or recommended. See your Chevrolet dealer for terms of this limited warranty.

Assembly

Chevrolets are assembled by different operating units of General Motors, its subsidiaries or suppliers to GM worldwide. Chevrolets incorporate thousands of components produced by different operating units of GM, its subsidiaries or suppliers to GM worldwide. We sometimes find it necessary to produce Chevrolets with different or differently sourced components than originally scheduled. All such components have been approved for use in Chevrolets and will provide the quality performance associated with the Chevrolet name. Since some options may be unavailable when your vehicle is assembled, we suggest that you verify that your vehicle includes the equipment you ordered or, if there are changes, that they are acceptable to you.

Updated Service Information

Chevrolet regularly sends its dealers useful service bulletins about Chevrolet products. Chevrolet monitors product performance in the field. We then prepare bulletins for servicing our products better. Now you can get these bulletins, too. Ask your dealer. For ordering information, call toll free 1-800-551-4123.

Product Information

For additional information on 1998 Chevy car or truck products, call 1-800-950-2438 or visit us at our Web site address: <http://www.chevrolet.com>

Important: A Word About This Brochure

We have tried to make this brochure as comprehensive and factual as possible. We reserve the right, however, to make changes at any time, without notice, in prices, colors, materials, equipment, specifications, models and availability. Since some information may have been updated since the time of printing, please check with your Chevrolet dealer for complete details.

Turn Plastic Into Steel With The GM Card[®].

The GM MasterCard[®] with no annual fee (standard GM Card only) gives you an important financial advantage on your next purchase or lease of a GM vehicle. Use the GM Card[®] for purchases and you'll receive up to 5% of that purchase amount in GM Card Earnings. You can earn as much as \$500 per Account Year, for a maximum of \$3,500 over a period of seven years. That's over and above any other discount or incentive. To request your GM Card, call 1-800-8GM-CARD.



SMARTLEASE[®] by GMAC makes it easy to enjoy a brand-new Chevy Cavalier. With SMARTLEASE, qualified customers can be approved in about one hour, and you'll enjoy low SMARTLEASE monthly payments. Plus, SMARTLEASE offers you choices at the end of your lease. You can either buy your Cavalier at a price guaranteed up front, or return your vehicle with no other obligations — providing the terms of the lease have been met. For more information about SMARTLEASE, or any of the other quality GMAC financing options, see your Chevrolet dealer or call 1-800-32-SMART.



you choices at the end of your lease. You can either buy your Cavalier at a price guaranteed up front, or return your vehicle with no other obligations — providing the terms of the lease have been met. For more information about SMARTLEASE, or any of the other quality GMAC financing options, see your Chevrolet dealer or call 1-800-32-SMART.

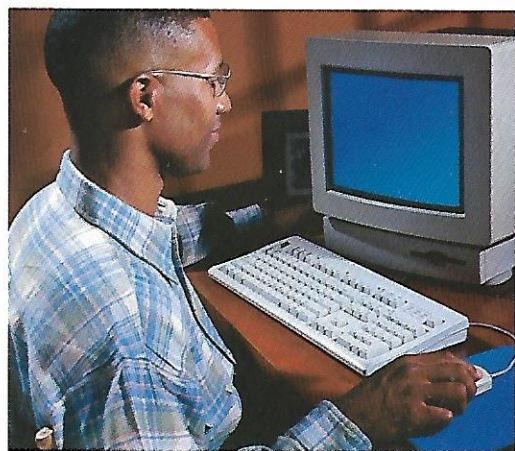


A note about air bags:
Always wear safety belts,
even with air bags.

General Motors, GM, the GM Emblem, Cavalier, Genuine Chevrolet, Passlock, TheftLock, Delco, ETR, Chevrolet and the Chevrolet Emblem are registered trademarks and Chevy and Z26 are trademarks of the General Motors Corporation. GMAC and SMARTLEASE are registered trademarks of the General Motors Acceptance Corporation. Extended-Range Sound is a trademark of the Delco Electronics Corp. "Scotchgard" is a registered trademark of 3M. ©1997 General Motors Corporation. All rights reserved.

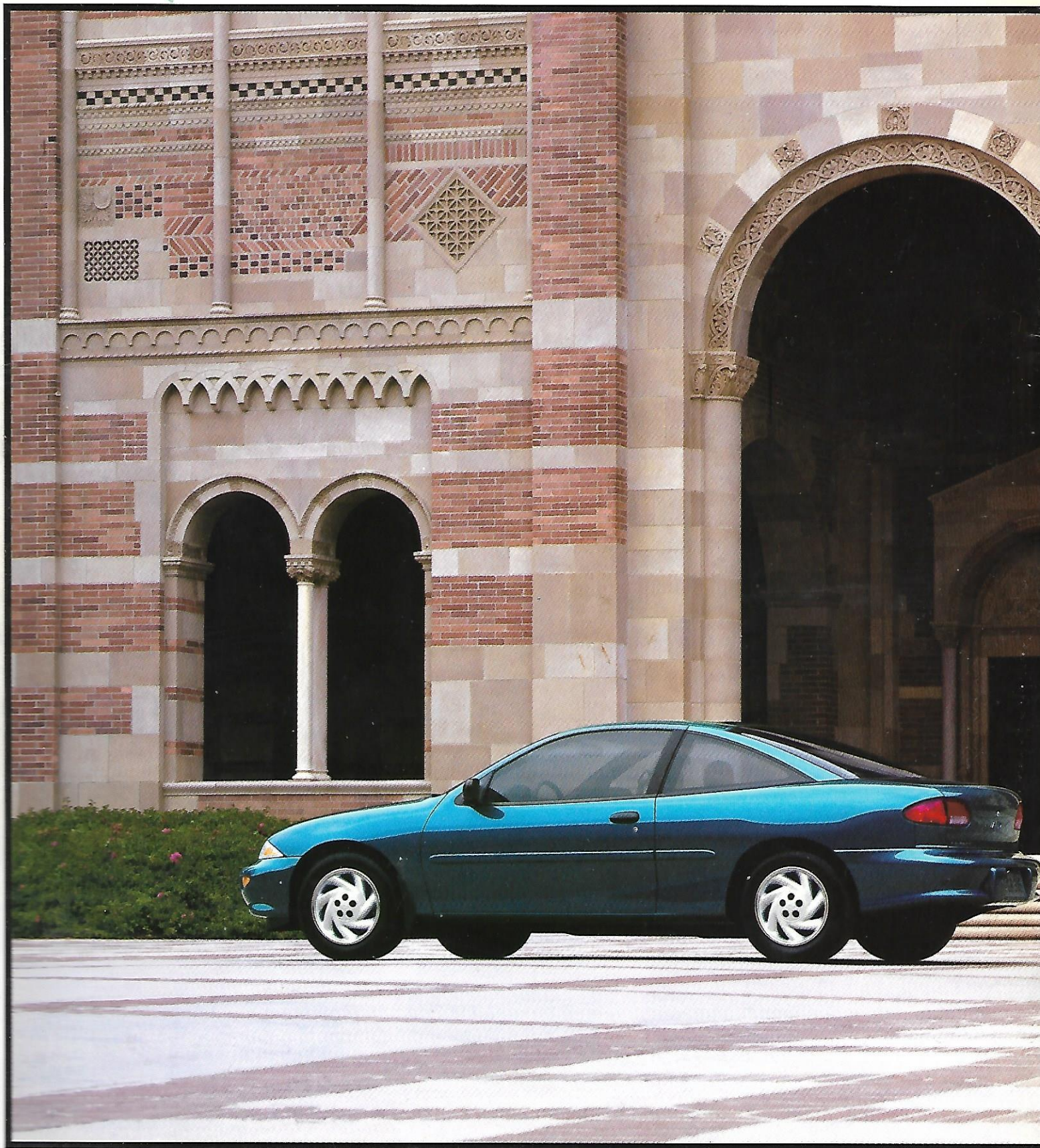
Litho in USA

July 1997



Customer Assistance

The Chevrolet Customer Assistance Center (CAC) has a special toll-free number (1-800-222-1020). It puts you in contact with Chevrolet experts who can handle any product/service question or problems you may have.



Genuine Chevrolet® 
The Cars More Americans Trust.