

 [chevy.com](http://chevy.com)



**CHEVROLET**

11CHECRZCAT01

All New 2011 **Chevrolet Cruze** 







Fuel Range

500 m

P 00090

RES/+

SET/-









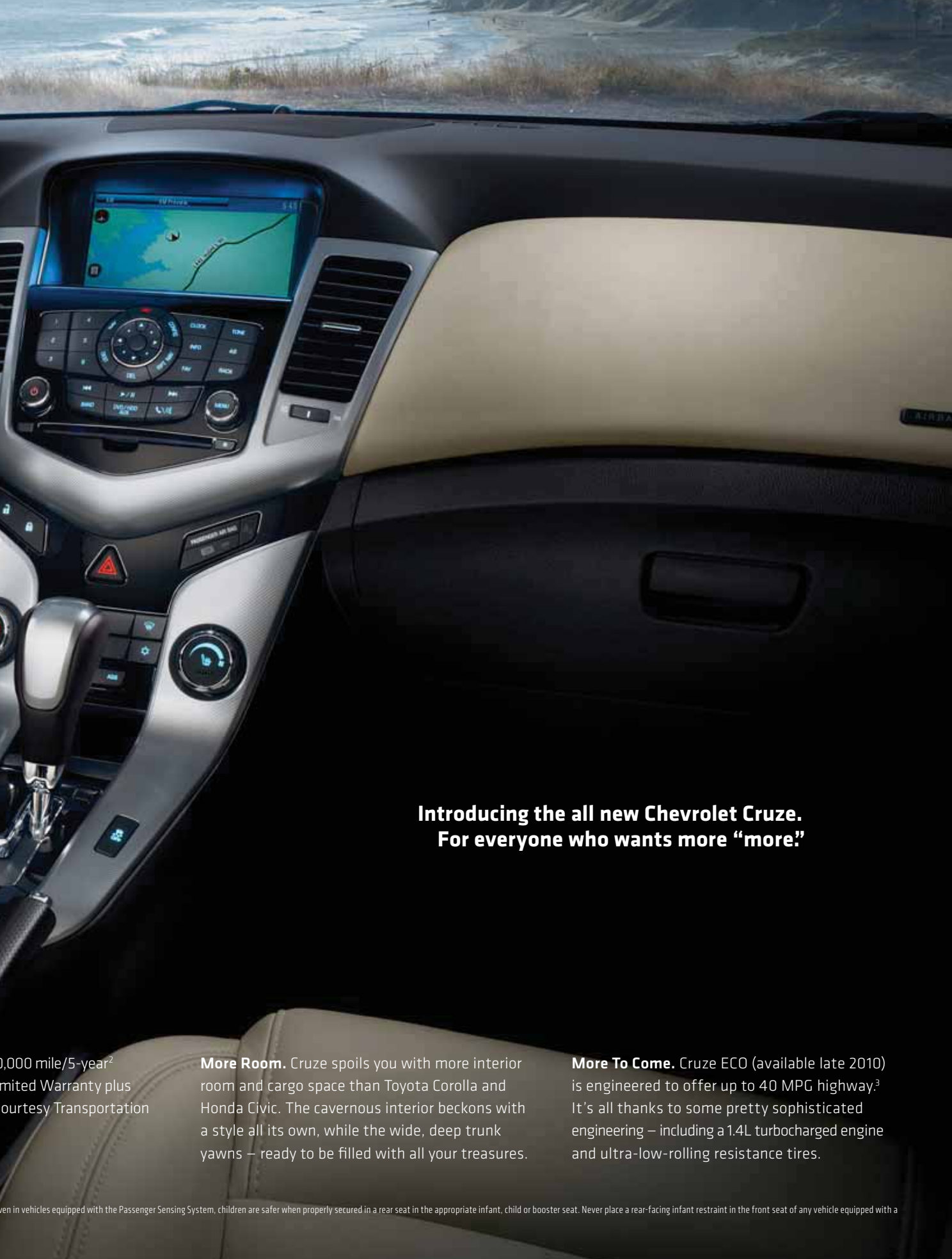
**More Than Ready.** After 4 million miles of durability testing around the world, Cruze is more than ready to handle just about anything your world happens to throw at it.

**More Safety.** Cruze looks out for you with 10 standard air bags,<sup>1</sup> including frontal, front side-impact, roof rail-mounted head-curtain, rear side-impact, and new front knee air bags. Whew.

**More Coverage.** With a 100-hour transferable Powertrain Limited Warranty, OnStar<sup>2</sup> Roadside Assistance and Chevrolet Care Programs.

**Cruze LTZ interior in Cocoa/Light Neutral leather with available navigation system. EPA estimated 24 MPG city/36 highway.** <sup>1</sup> Always use safety belts and the correct restraint for your child's age and size. Evenly distributed weight is important for proper fit. See the Owner's Manual for more information. <sup>2</sup> Whichever comes first. See dealer for details. <sup>3</sup> Based on GM testing. Official EPA estimates not yet available.





**Introducing the all new Chevrolet Cruze.  
For everyone who wants more “more.”**

0,000 mile/5-year<sup>2</sup>  
limited Warranty plus  
courtesy Transportation


**More Room.** Cruze spoils you with more interior room and cargo space than Toyota Corolla and Honda Civic. The cavernous interior beckons with a style all its own, while the wide, deep trunk yawns – ready to be filled with all your treasures.

**More To Come.** Cruze ECO (available late 2010) is engineered to offer up to 40 MPG highway.<sup>3</sup> It's all thanks to some pretty sophisticated engineering – including a 1.4L turbocharged engine and ultra-low-rolling resistance tires.

even in vehicles equipped with the Passenger Sensing System, children are safer when properly secured in a rear seat in the appropriate infant, child or booster seat. Never place a rear-facing infant restraint in the front seat of any vehicle equipped with a







**Squeaks, rattles and hums are not cool.  
Buzz, however, is just fine.**

*"R  
a  
A*

*"I've  
ma  
a v  
CAR*



*"Cruze's roominess, efficiency, quality and refinement bring Chevrolet into a whole new world of compact cars."*

CARS.COM

*"Refinement and quietness are really the car's strong suit."*

AUTOWEEK.COM


*"The most impressive thing about the Cruze was its handling."*

ROADANDTRACK.COM, JULY 2010

*"I've used the phrase 'a lot of car for the money' before, but GM has taken this to a whole new level with the Cruze."*

CARS.ABOUT.COM



Learn more about the all new Chevrolet Cruze at [chevy.com/cruze](http://chevy.com/cruze). 



The new car that comes with  
4,000,000 test miles on it.



Every Cruze comes with 4,000,000 miles on it from being tested all around the world. To make sure it could handle the heat, we took it to the deserts of Saudi Arabia. To make sure it could handle the cold, we wintered it in

Russia. Along the way, Cruze was high-altitude-tested in the Alps and endured monsoon season in Thailand. The result is a car engineered and built to easily handle the most punishing conditions in the world – yours.

**Confidence is always attractive.  
And in this case, downright stunning.**



**100,000 mile/5-year<sup>1</sup> Transferable Powertrain Limited Warranty.** That's 40,000 more miles than Toyota or Honda offers. And you have our Roadside Assistance and Courtesy Transportation Programs, Which is a beautiful thing.

**24-Hour Roadside Assistance.** Chevrolet offers a 24-hour Roadside Assistance Program for a period of five years or 100,000 miles.<sup>1</sup>

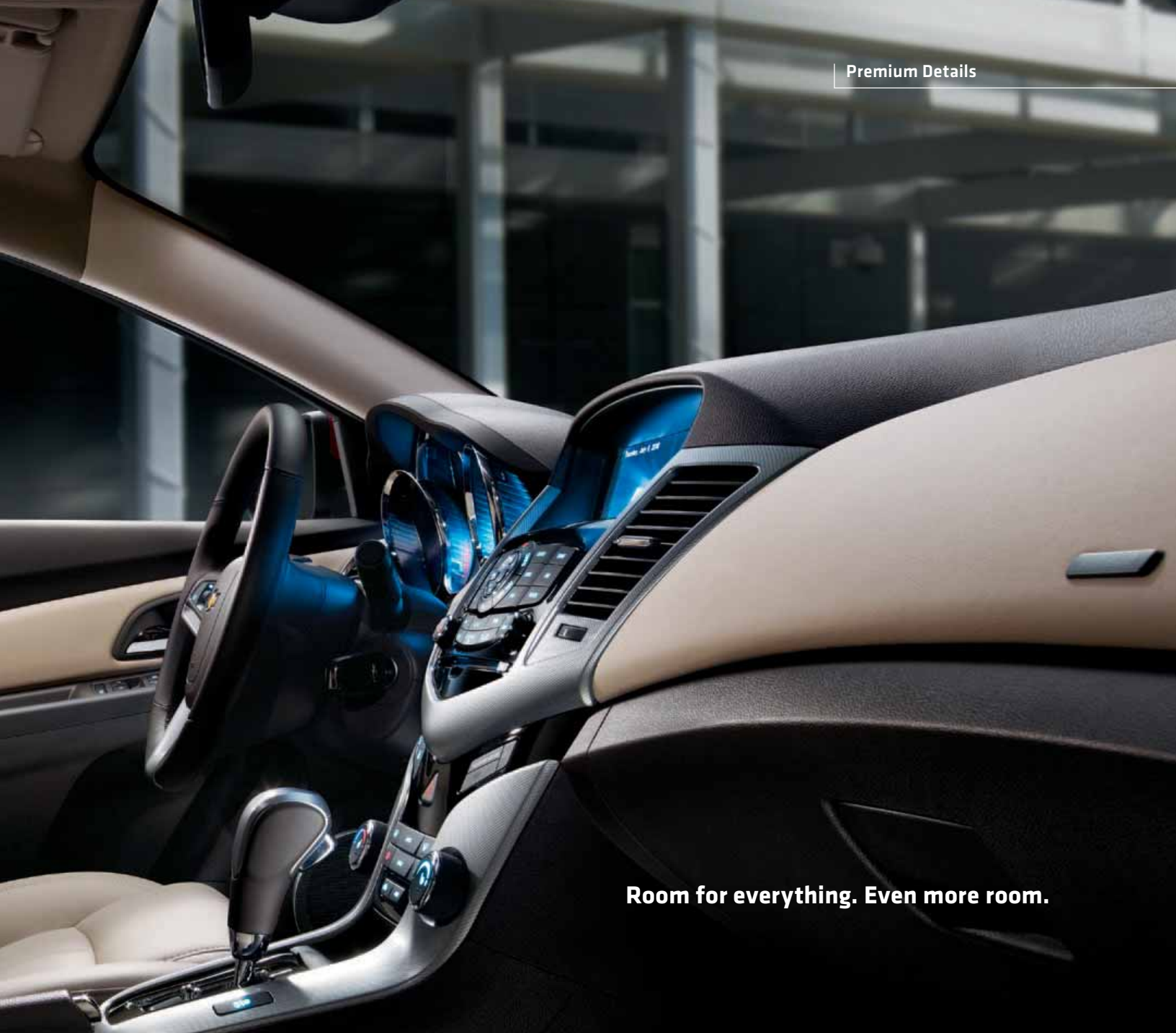
**Courtesy Transportation.** Provides alternate transportation and/or reimbursement of certain transportation expenses for a period of five years or 100,000 miles.<sup>1</sup>






**Pushing Design.** An all-star team of international designers pushed the interior boundaries of Cruze and kept pushing until Cruze had more space than Toyota Corolla and Honda Civic. And more style. The designers treated every millimeter as if it were a mile. From the available French stitching on the seats to the vibrantly colorful gauge faces, Cruze exudes an unexpected ambience. And it's easy on the ears too. Thanks to more than 30 separate acoustical treatments (excludes ECO), Cruze lets you take it all in while keeping unwanted road noise out. And the engineers didn't stop there. They packed the beautiful interior with technology to make your drive – and your day – that much easier.


 See more Cruze interior features at [chevy.com/cruze](https://chevy.com/cruze).



**Room for everything. Even more room.**

 **Available Bluetooth® Wireless Technology<sup>1</sup>** for select phones lets you make, answer and end calls with a tap of the steering wheel controls.

 **Available USB Port<sup>2</sup>** Connect your MP3 player or a music-loaded flash drive to the stereo system.

 **XM Radio<sup>3</sup>** Enjoy commercial-free music from any genre plus the best in sports, news, talk, entertainment and comedy on every drive. A three-month trial is standard on every Cruze.

**Pioneer Premium Audio System.** Combines 250 watts of power with crystal-clear high-frequency tweeters, a live staging center-channel speaker and 6" x 9" subwoofer for a nine-speaker sonic experience. Available on 1LT, 2LT and LTZ.

**Available Rear Parking Assist<sup>4</sup>** Several ultrasonic sensors in the rear bumper can detect certain stationary objects while traveling in Reverse at low speeds. It alerts you with a series of beeps that increase in frequency as you get closer. It's a modern take on having eyes in the back of your head.

**Cruze LTZ interior in Cocoa/Light Neutral leather with available navigation system.** <sup>1</sup> Go to [gm.com/bluetooth](http://gm.com/bluetooth) to find out which phones are compatible with the vehicle. <sup>2</sup> Not compatible with all devices. <sup>3</sup> Requires a subscription sold separately by XM after trial period. Available only in the 48 contiguous United States and District of Columbia. Visit [gm.xmradio.com](http://gm.xmradio.com) for details. <sup>4</sup> Available on select models.



**It's fun to drive. Especially past the gas pump.**



Usually “fun to drive” and “fuel-efficient” don’t share the same sentence. Cruze is here to change that. Cruze was engineered for exceptional ride and handling every bit as much as it was engineered for tremendous efficiency – offering a standard fuel economy of 26 MPG city, 36 highway.<sup>1</sup>

**Ride and Handling.** A European race-bred compound crank Z-link suspension<sup>2</sup> prevents lateral movement of the axle to increase stability. Combined with rack-mounted electric power steering, Cruze lives up to its name, offering a smooth, agile ride with responsive steering.

**Two Six-Speed Transmissions.** Unlike most compacts, Cruze offers both manual and automatic six-speed transmissions. Cruze also offers two choices of efficient engines – starting with a standard 138-hp 1.8L DOHC four-cylinder.

 Visit [chevy.com/cruze](http://chevy.com/cruze) to see how advanced powertrain technology gives Cruze exceptional efficiency.



**A Whole New Turbo.** The advanced 1.4L turbo does things a normal engine can't. Like helping Cruze ECO offer 40 MPG<sup>3</sup> – the best gas-engine highway fuel economy of any compact. All while generating an impressive 138 hp. The turbo hits maximum torque quickly, at a lower rpm, for rapid acceleration you're going to love.

**Sophisticated Technology.** Cruze ECO teams the 1.4L turbo with a front fascia air shutter that closes at highway speeds to improve aerodynamics. Cruze ECO also uses ultra-low-rolling resistance tires. See all of the fuel-saving technology in Cruze ECO at [chevy.com/cruze](http://chevy.com/cruze).



## We went above and beyond for the sake of safety. Not to mention upside down.

Five-mile-per-hour bumper tests. Head-on collisions. Even rollover simulations. We put Cruze through an extensive battery of safety tests because even though most accidents happen out of the blue, we think you should still be prepared. And the more testing we did, the more safety solutions our engineers came up with.

That's why Cruze is equipped with more standard safety features than a 2010 Toyota Corolla, Honda Civic or Ford Focus.



**Ten Air Bags<sup>1</sup>** Standard on every Cruze, including frontal, front side-impact, roof rail-mounted head-curtain side-impact with rollover capability, outboard rear side-impact, and new knee air bags.

**OnStar<sup>®2</sup> with Automatic Crash Response.** In certain types of collisions, built-in sensors can automatically alert OnStar for help. Even if you can't respond, an Advisor can request that emergency help be sent to your exact GPS location. It's standard for the first six months in every Cruze.

**Cruze LTZ in Crystal Red Metallic Tintcoat (extra-cost color) with available RS Appearance Package.** <sup>1</sup> Air bag inflation can cause severe injury or death to anyone too close to the bag when it deploys. Be sure every occupant is properly restrained. <sup>2</sup> Visit [onstar.com](http://onstar.com) for details and system limitations. <sup>3</sup> Excludes spare tire. <sup>4</sup> EPA estimated 26 MPG city/36 highway.



**A Safety Cage** surrounds the passenger compartment from the windshield pillar to the rear window pillar and from the top of the roof down to the car's frame. This design is intended to help preserve occupant space in the event of a collision.

**Tire Pressure Monitor**<sup>3</sup> Physical pressure sensors inside each tire send information to the instrument cluster to notify the driver if any tires are underinflated. Proper inflation also helps keep a car safe and helps achieve maximum fuel efficiency.<sup>4</sup>

**The StabiliTrak Electronic Stability Control System** (including Traction Control and antilock brakes) in every Cruze helps you stay the course by detecting the difference between the steering wheel angle direction and the direction the vehicle is actually turning. It then uses the brakes and, if necessary, adjusts engine torque to help keep your vehicle on track.





### Protected and Connected with OnStar.<sup>1</sup>

Experience the safe, simple way to stay connected on the road. OnStar<sup>1</sup> is now standard on most models with the Directions & Connections<sup>®</sup> Plan for the first six months.



#### Automatic Crash Response.

Built-in sensors can automatically alert OnStar for help. Even if you can't respond, an Advisor can request that emergency help be sent to your exact GPS location.



#### Emergency Services.

One push of the red emergency button gives you a priority connection to an OnStar Advisor who can contact emergency services and direct them to your exact location.



#### Security Services.

Stolen Vehicle Assistance, Remote Door Unlock and Remote Horn and Lights are among these services.



#### Turn-by-Turn Navigation.

When you're not exactly sure how to get there, simply push the blue OnStar button and get voice-guided directions downloaded to your vehicle.



#### OnStar Savings.

We can help lower the cost of vehicle ownership with insurance discounts and other ways to save. To learn more, go to [onstar.com/savings](http://onstar.com/savings).



#### Vehicle Diagnostics.

Receive monthly emails on the operating status of your key vehicle systems.



#### Hands-Free Calling.

Make and receive voice-activated calls while keeping your eyes on the road and your hands on the wheel.

Connect with real subscribers, share stories and get information at [OnStarConnections.com](http://OnStarConnections.com).

**Turn-by-Turn Navigation<sup>1</sup>** With OnStar<sup>1</sup> Turn-by-Turn Navigation, you tell the Advisor your destination and you get directions sent to your vehicle. That's it. See upcoming turns and street names displayed on the radio. Wrong turn? Turn-by-Turn knows it and helps get you back on track automatically.

**Available USB Port<sup>2</sup>** Connect your MP3 player or even a music-loaded flash drive to the stereo. Standard on 2LT and LTZ and available on every other Cruze.

**Bluetooth<sup>®</sup> at Your Command.** Bluetooth<sup>®</sup> wireless technology<sup>3</sup> for select phones lets you make, answer and end calls with a tap of the steering wheel controls. Standard on 2LT and LTZ and available on every other Cruze.

Control your car from afar with OnStar MyLink.



**Remote Control.** If you love your smartphone, you're going to love the OnStar MyLink mobile app.<sup>4</sup> It's a whole new way to stay connected to your Cruze. With it, you can lock or unlock your doors and even start your car from virtually anywhere. So you can heat up or cool down the cabin and be ready to go by the time you get to your car. It also can activate the horn and lights, making it easier to find your Cruze in a crowded parking lot. Should you ever need the assistance of an OnStar Advisor, MyLink can connect you with the push of a single button.

**Check Your Tire Pressure and More.** The app has a screen that can show your vehicle's recommended tire pressure and alert you if any of your tires need to be inflated. Even better, the app can tell you how many gallons of fuel are left in your tank and your fuel range in miles, so you'll know if you need to hit the gas station on the way home or wait another day. It also displays your remaining oil life.



## See how Cruze compares.

	<b>2011 Chevrolet Cruze LS</b>	2010 Toyota Corolla	2010 Honda Civic DX	2011 Ford Focus S	2010 Hyundai Elantra Blue
EPA Estimated Highway Fuel Economy	<b>36 MPG</b>	35 MPG	34 MPG	35 MPG	34 MPG
EPA Estimated City Fuel Economy	<b>26 MPG</b>	26 MPG	26 MPG	25 MPG	25 MPG
Passenger Room (cu. ft.)	<b>94.6</b>	92	90.9	93.4	97.9
Cargo Room (cu. ft.) <sup>1</sup>	<b>15.4</b>	12.3	12	13.8	14.2
Standard Air Bags <sup>2</sup>	<b>10</b>	6	6	6	6



**2011  
Chevrolet  
Cruze LS**

2010 Toyota  
Corolla

2010 Honda  
Civic DX

2011 Ford  
Focus S

2010 Hyundai  
Elantra Blue

<b>Standard Built-In Navigation<sup>3</sup></b>	<b>Standard</b> (for the first 6 months)	No	No	No	No
<b>OnStar<sup>3</sup> with Built-In Automatic Crash Response</b>	<b>Standard</b> (for the first 6 months)	Not available	Not available	Not available	Not available
<b>XM Radio<sup>4</sup></b>	<b>Standard</b> (for 3 trial months)	Available	Not available	Not available	Available
<b>Powertrain Warranty (miles/years<sup>5</sup>)</b>	<b>100,000/5</b>	60,000/5	60,000/5	60,000/5	100,000/10



**Cruze LS in Silver Ice Metallic.** **1** Cargo and load capacity limited by weight and distribution. **2** Always use safety belts and the correct restraint for your child's age and size. Even in vehicles equipped with the Passenger Sensing System, children are safer when properly secured in a rear seat in the appropriate infant, child or booster seat. Never place a rear-facing infant restraint in the front seat of any vehicle equipped with a passenger air bag. See the Owner's Manual and child safety seat instructions for more safety information. **3** Visit [onstar.com](http://onstar.com) for details and system limitations. OnStar acts as a link to existing emergency service providers. **4** Requires a subscription sold separately by XM after trial period. Available only in the 48 contiguous United States and District of Columbia. Visit [gm.xmradio.com](http://gm.xmradio.com) for details. **5** Whichever comes first. See dealer for limited warranty details.





Crystal Red Metallic Tintcoat<sup>1,2</sup>

Silver Ice Metallic

Summit White

Ice Blue Metallic

**Wheels.**

**1.** 18" split five-spoke Silver-painted alloy wheel. Standard on LTZ.

**2.** 17" 15-spoke forged-polished aluminum wheel. Standard on ECO.

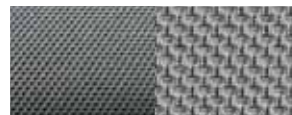
**Fabrics.**



Jet Black/Medium Titanium Color Premium Cloth



Jet Black Premium Cloth



Medium Titanium Color Premium Cloth



Jet Black/Sport Red Premium Cloth



Jet Black leather appointments



Jet Black/Brick leather appointments



Cocoa/Light Neutral leather appointments



Imperial Blue Metallic

Gold Mist Metallic<sup>2</sup>

Taupe Gray Metallic

Black Granite Metallic<sup>1</sup>

**3.** 17" five-spoke flangeless machined-face alloy wheel. Available on 2LT (includes four-wheel disc brakes and Sport-Tuned suspension).

**4.** 16" five-spoke machined-face alloy wheel. Standard on 2LT, available on 1LT.

**5.** 16" Silver-painted wheel covers. Standard on LS and 1LT.





# Cruze buyer's guide.

S = Standard O = Optional – = Not Available

## Maximum Capacities

Cargo volume (cu. ft.) <sup>1</sup>	15.4
Fuel tank (gal. approx.)	15.6
Seating	5

## Exterior

	LS	1LT	2LT	LTZ	ECO
Door handles: body-color	S	S	S	–	S
Door handles: chrome	–	–	–	S	–
Grille: – Black insert with chrome surround	S	S	S	S	–
– Unique front fascia and lower front grille air shutter	–	–	–	–	S
Glass: – acoustic laminated windshield	S	S	S	S	S
– Solar-Ray light-tinted	S	S	S	S	S
Headlamps: halogen composite with Automatic Exterior Lamp Control	S	S	S	S	S
Mirrors: – manual-folding, Black	S	–	–	–	–
– power-adjustable, manual-folding, body-color	–	S	S	–	S
– power-adjustable, heated, manual-folding, body-color	–	–	O <sup>2</sup>	S	–
RS Appearance Package: unique fascias, rocker moldings, rear spoiler, foglamps, and uplevel instrument cluster (cluster standard on LTZ)	–	O	O	O	–

## Engines/Chassis

Engines: – ECOTEC 1.8L DOHC I-4 with Variable Valve Timing (VVT)	S	–	–	–	–
– ECOTEC 1.4L Turbo with VVT and water-cooled bearings	–	S	S	S	S
Battery: maintenance-free, with rundown protection	S	S	S	S	S
Steering: power, electric, rack-mounted	S	S	S	S	S
Front suspension: independent MacPherson struts	S	S	S	S	S
Rear suspension: compound crank with Z-link	S	S	S	S	O <sup>3</sup>
Transmissions, six-speed with overdrive:					
– manual	S	–	–	–	–
– automatic	O	S	S	S	O <sup>4</sup>
– manual with ECO gear set	–	–	–	–	S

## Safety & Security

Air bags: <sup>5</sup> driver and front passenger frontal; front seat side-impact, rear seat-mounted and roof rail head-curtain for front and rear outboard seating positions; driver and front passenger knee; includes Passenger Sensing System	S	S	S	S	S
Brakes: four-wheel antilock	S	S	S	S	S
Brakes: four-wheel disc	–	–	O <sup>6</sup>	S	–
Door locks: child security, rear	S	S	S	S	S
Daytime Running Lamps	S	S	S	S	S
OnStar <sup>7</sup> with Directions & Connections Plan for the first six months	S	S	S	S	S
StabiliTrak Electronic Stability Control System with Traction Control	S	S	S	S	S
Vehicle theft-deterrent system with anti-theft alarm and engine immobilizer	S	S	S	S	S
Tire Pressure Monitor (excludes spare tire)	S	S	S	S	S

## Interior

Air conditioning: – single zone, manual	S	S	S	–	S
– single zone, automatic climate control	–	–	–	S	–
Bluetooth <sup>®</sup> wireless technology <sup>8</sup> for select phones	O <sup>9</sup>	O <sup>4</sup>	S	S	O <sup>4</sup>

## Interior (continued)

	LS	1LT	2LT	LTZ	ECO
Console, center with sliding armrest, storage, front and rear 12-volt auxiliary power outlets, and dual cup holders	S	S	S	S	S
Cruise control	–	O <sup>4</sup>	S	S	O <sup>4</sup>
Defogger: rear window, electric	S	S	S	S	S
Door locks: power	S	S	S	S	S
Driver Information Center: Oil-Life and Tire Pressure Monitors (excludes spare tire), outside temperature display, trip odometer and programmable menu functions	S	S	S	S	S
Floor mats: carpeted, front and rear	O	S	S	S	S
Ambient LED back lighting	S	S	S	S	S
Connectivity Plus Cruise Package: cruise control, Bluetooth <sup>®</sup> wireless technology <sup>8</sup> for select phones, USB port <sup>10</sup> , steering wheel-mounted audio controls, leather-wrapped shift knob and steering wheel	–	O	–	–	O
Connectivity Package: Bluetooth <sup>®</sup> wireless technology <sup>8</sup> for select phones, USB port <sup>10</sup> and steering wheel-mounted audio controls	O	–	–	–	–
Remote Keyless Entry	S	S	S	S	S
Remote vehicle starter system	–	O <sup>2</sup>	S	S	O <sup>2</sup>
Steering column: tilt and telescopic	S	S	S	S	S
Steering wheel: – mounted audio controls	O <sup>3</sup>	O <sup>4</sup>	S	S	O <sup>4</sup>
– leather-wrapped, with Polar Silver Accents	–	O <sup>4</sup>	S	S	O <sup>4</sup>
Sunroof: power, sliding	–	–	O	O	–

## Seating

Front buckets with reclining seatbacks and adjustable head restraints; eight-way manual-adjustable passenger, rear 60/40 split-folding with adjustable head restraints for all three positions					
– Premium Cloth	S	S	–	–	S
– Leather-appointed front and rear	–	–	S	S	–
– Eight-way manual-adjustable driver	S	S	–	–	S
– Six-way power-adjustable driver	–	O <sup>2</sup>	S	S	O <sup>2</sup>
– Heated front seats with three warmth settings	–	–	S	S	–

## Audio Systems

AM/FM stereo, CD player, MP3 playback	S	S	S	S	S
AM/FM stereo, CD player, MP3 playback, GPS navigation system <sup>11</sup> with hard drive memory and 7" diagonal color display	–	–	O <sup>12</sup>	O <sup>12</sup>	–
Pioneer <sup>®</sup> premium audio system: 250-watt, nine-speaker	–	O	O	O	–
Auxiliary audio input jack	S	S	S	S	S
USB port <sup>10</sup>	O <sup>3</sup>	O <sup>4</sup>	S	S	O <sup>4</sup>
XM Radio: <sup>13</sup> with three trial months	S	S	S	S	S

## Wheels

16" steel wheels with Silver-painted wheel covers	S	S	–	–	–
16" five-spoke machined-face alloy	–	O	S	–	–
17" five-spoke flangeless machined-face alloy	–	–	O	–	–
17" 15-spoke forged-aluminum wheels with ultra-low-rolling resistance tires	–	–	–	–	S
18" split five-spoke Silver-painted alloy	–	–	–	S	–
Compact spare tire and spare wheel; includes jack and lug nut wrench	O	O	O	O	–
Tire sealant and inflator kit	S	S	S	S	S

# Select vehicle features.

## LS

- 138-hp 1.8L DOHC I-4 engine
- Six-speed manual transmission
- 16" Silver-painted wheel covers
- 10 standard air bags<sup>5</sup>
- StabiliTrak Electronic Stability Control System plus Traction Control
- Four-wheel antilock brakes
- OnStar<sup>7</sup> Directions & Connections Plan for the first six months, including Turn-by-Turn Navigation
- XM Radio<sup>13</sup> with three trial months

## 1LT

*In addition to or replacing LS features, 1LT includes:*

- 138-hp 1.4L turbocharged engine
- Six-speed automatic transmission
- Body color, power-adjustable outside rearview mirrors
- Available RS Appearance Package
- Available Pioneer nine-speaker, 250-watt sound system
- Available Connectivity Plus Cruise Package
- Available Driver Convenience Package

## 2LT

*In addition to or replacing 1LT features, 2LT includes:*

- 16" five-spoke machined-face alloy wheels
- Leather-wrapped steering wheel and shift knob
- Leather-appointed heated seats with power-adjustable driver seat
- USB port<sup>10</sup>

## 2LT (contd.)

- Remote start
- Bluetooth<sup>®</sup> wireless technology<sup>8</sup> for select phones
- Available GPS navigation system<sup>11,12</sup> with 7" diagonal color display

## L TZ

*In addition to or replacing 2LT features, LTZ includes:*

- 18" split five-spoke Silver-painted alloy wheels
- Four-wheel antilock disc brakes
- Chrome door handles, heated outside rearview mirror, auto-dimming inside rearview mirror and illuminated visor mirrors
- Heated, power-adjustable, leather-appointed seats
- Uplevel instrument cluster
- Ultrasonic Rear Parking Assist

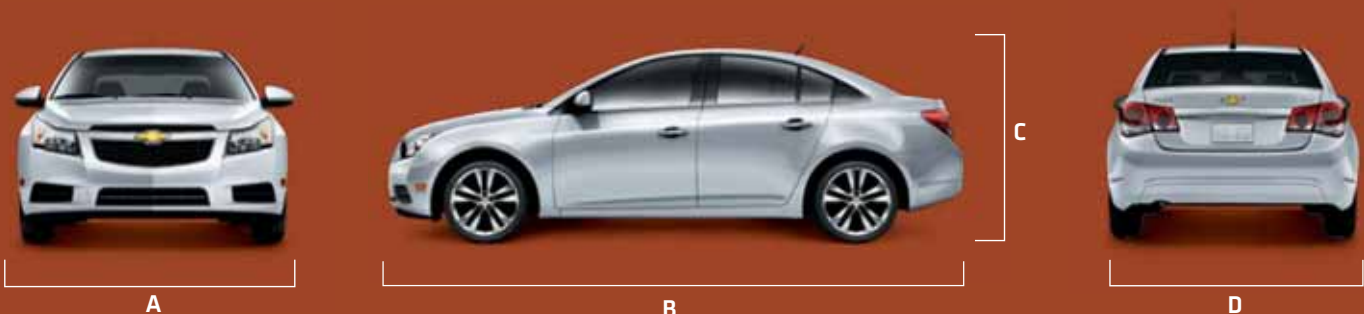
## ECO

*In addition to or replacing 1LT features, ECO includes:*

- Six-speed manual transmission with ECO overdrive gear
- 17" 15-spoke, forged-polished aluminum wheels with ultra-low-rolling resistance tires
- Unique front fascia air dam, lower front grilles, air shutter and rear spoiler
- Available USB port<sup>10</sup>
- Available Bluetooth<sup>®</sup> wireless technology<sup>8</sup> for select phones
- Available Connectivity Plus Cruise Package
- Available Driver Convenience Package

## Dimensions

A = 70.7"    B = 181.0"    C = 58.1"    D = 61.3"



<sup>1</sup> Cargo and load capacity limited by weight and distribution. <sup>2</sup> Requires available Driver Convenience Package. <sup>3</sup> Requires available automatic transmission. <sup>4</sup> Requires available Connectivity Plus Cruise Package. <sup>5</sup> Always use safety belts and the correct restraint for your child's age and size. Even in vehicles equipped with the Passenger Sensing System, children are safer when properly secured in a rear seat in the appropriate infant, child or booster seat. Never place a rear-facing infant restraint in the front seat of any vehicle equipped with a passenger air bag. See the Owner's Manual and child safety seat instructions for more safety information. <sup>6</sup> Requires available 17" five-spoke flangeless machined-face alloy wheels. <sup>7</sup> Visit onstar.com for coverage map, details and system limitations. Not available in all areas. <sup>8</sup> Go to gm.com/bluetooth to find out which phones are compatible with the vehicle. <sup>9</sup> Requires available Connectivity Package. <sup>10</sup> Not compatible with all devices. <sup>11</sup> Map coverage excludes Puerto Rico, the Virgin Islands and portions of Canada. <sup>12</sup> Requires available Pioneer premium audio system. <sup>13</sup> Requires a subscription sold separately by XM after trial period. Available only in the 48 contiguous United States and District of Columbia. Visit gm.xradio.com for details.



# Important information.

## 100,000 MILE/5-YEAR TRANSFERABLE POWERTRAIN LIMITED WARRANTY.

Every 2011 Chevy passenger car, light-duty truck, SUV and crossover comes with a 100,000 mile/5-year (whichever comes first) transferable Powertrain Limited Warranty. Plus, you get 100,000 miles/5 years (whichever comes first) of the 24/7 Roadside Assistance Program and the Courtesy Transportation Program and much more. See dealer for details.

**NEW VEHICLE LIMITED WARRANTY.** GM vehicles registered in the U.S.A. are covered for 3 years/36,000 miles (whichever comes first). The complete vehicle is covered, including tires, towing to your nearest Chevrolet dealership and cosmetic corrosion resulting from defects. Repairs will be made to correct any vehicle defect, and most warranty repairs will be made at no charge. In addition, rust-through corrosion will be covered for 6 years/100,000 miles (whichever comes first). See dealer for details.

**ENGINES.** Chevrolet products are equipped with engines produced by GM Powertrain or other suppliers to GM worldwide. The engines in Chevrolet products may also be used in other GM makes and models.

**ASSEMBLY.** Chevrolet vehicles and their components are assembled or produced by different operating units of General Motors, its subsidiaries or suppliers to GM worldwide. We sometimes find it necessary to produce Chevrolet vehicles with different or differently sourced components than originally scheduled. Since some options may be unavailable when your vehicle is assembled, we suggest you verify that your vehicle includes the equipment you ordered and that, if there were changes, they are acceptable to you.

**ONSTAR.** OnStar services require vehicle electrical system (including battery), wireless service and GPS satellite signals to be available and operating for features to function properly. OnStar acts as a link to existing emergency service providers. Subscription Service Agreement required. Call 1-888-4ONSTAR (1-888-466-7827) or visit [onstar.com](http://onstar.com) for OnStar Terms and Conditions, Privacy Statement, and details and system limitations.

**A NOTE ABOUT CHILD SAFETY.** Always use safety belts and the correct restraint for your child's age and size. Even in vehicles equipped with the Passenger Sensing System, children are safer when properly secured in a rear seat in the appropriate infant, child or booster seat. Never place a rear-facing infant restraint in the front seat of any vehicle equipped with a passenger air bag. See the Owner's Manual and child safety seat instructions for more safety information.

**IMPORTANT WORDS ABOUT THIS CATALOG.** We have tried to make this catalog comprehensive and factual. We reserve the right, however, to make changes at any time, without notice, in prices, colors, materials, equipment, specifications, models and availability. Specifications, dimensions, measurements, ratings and other numbers in this catalog and other printed materials provided at the dealership or affixed to vehicles are approximates based upon design and engineering drawings, prototypes and laboratory tests. Your vehicle may differ due to variations in manufacture and equipment. Since some information may have been updated since the time of printing, please check with your Chevrolet dealer for complete details. Chevrolet reserves the right to lengthen or shorten the model year for any product for any reason or to start and end model years at different times. Certain vehicle features may lose their usefulness over time due to obsolescence from technological changes. Unless otherwise noted, all claims based on GM Compact Car segment and latest available competitive information. Excludes other GM vehicles.

**FLEET ORDERS.** Some standard content may be deleted with fleet orders. See dealer for details.

GM, the GM Logo, Chevrolet, the Chevrolet Logo, and the slogans, emblems, vehicle model names, vehicle body designs and other marks appearing in this catalog are the trademarks and/or service marks of General Motors, its subsidiaries, affiliates or licensors. SIRIUS, XM and all related marks and logos are trademarks of SIRIUS XM Radio Inc. and its subsidiaries. The Bluetooth word mark is a registered trademark owned by Bluetooth SIG, Inc. and any use of such mark by Chevrolet is under license. iPhone is a registered trademark of Apple, Inc. All rights reserved. Android is a trademark of Google Inc. Use of this trademark is subject to Google Permissions. Pioneer is a registered trademark of Pioneer Corporation. ©2010 OnStar. All rights reserved. ©2010 General Motors. All rights reserved. Litho in USA.

September 2010

At Chevrolet, giving you a completely satisfying ownership experience is our top priority. That's why if you ever need assistance, feel free to contact us at these websites or phone numbers.

**CHEVY.COM.** Offers shopping tools such as Build and Price, Find a Vehicle, Request Info, Email Sign-Up, Compare Vehicles, Financial Tools...and much more.

**24-HOUR ROADSIDE ASSISTANCE PROGRAM (1-800-CHEV-USA).** The Chevrolet Roadside Assistance Program provides you with the following services for 100,000 miles or 5 years (whichever comes first): Emergency Towing (to closest Chevy dealer from a legal roadway), Lockout Service (keys locked inside vehicle), Flat Tire Changes (spare installed), Fuel Delivery (\$5 worth of fuel delivered on the road) and Jump Starts (at home or on the road). For specific terms and conditions, please contact your Chevrolet Roadside Assistance advisor at 1-800-243-8872. Some services may incur costs.

**COURTESY TRANSPORTATION PROGRAM.** Ask your Chevrolet dealer for Courtesy Transportation if you leave your vehicle for extended repairs under the New Vehicle Limited Warranty or Powertrain Limited Warranty. Ask if you qualify for expense reimbursement and/or vehicle rental. Services vary by dealer.

## CHEVROLET CUSTOMER ASSISTANCE CENTER (1-800-222-1020).

Talk directly to customer relationship managers who can handle any inquiries related to vehicle operation, warranty coverages, or product or service concerns you may have. Please refer to your Owner's Manual for Customer Assistance information.

**CHEVY.COM/SAFETY.** Chevrolet is committed to keeping you and your family safe — from the start of your journey to your destination. That's why every Chevrolet is designed with a comprehensive list of safety and security features to help give you peace of mind.

**GMMOBILITY.COM (1-800-323-9935).** GM Mobility offers financial assistance for eligible adaptive equipment to make automotive travel easier for persons with disabilities or special transportation needs. To learn more about special GM Mobility offers, visit [gmmobility.com](http://gmmobility.com).

## CHEVROLET OWNER CENTER (GMOWNERCENTER.COM/CHEVY).

Register your vehicle with the Chevrolet Owner Center, and receive benefits such as online access to your vehicle Owner's Manual, maintenance schedule reminders, service history tracking, warranty and service information, safety information, special offers and privileges, and news and events.

## MARKETING AND INCENTIVES (CHEVY.COM/SPECIALOFFERS).

Call 1-800-950-CHEV (1-800-950-2438) or visit [chevy.com/specialoffers](http://chevy.com/specialoffers) for new product, current incentive and marketing program information.

**GMCARDMEMBERSERVICES.COM.** Did you know about the family of reward credit cards that can help you get a great deal on a new GM car, light-duty truck, SUV or crossover? With a GM reward card, you accrue earnings on every credit card purchase to use toward the purchase or lease of an eligible, new GM vehicle. With three cards to choose from, you're sure to find one that suits you best.

## CHEVROLET

For more information about ownership extras, please visit the websites listed.



[onstar.com](http://onstar.com)



[chevy.com/accessories](http://chevy.com/accessories)



[gm.xmradio.com](http://gm.xmradio.com)



**100,000 MILE 5-YEAR  
POWERTRAIN WARRANTY**

[chevy.com/warranty](http://chevy.com/warranty)



# It's a Cruze world. We're just living in it.

*"The inside is where you spend your time, and it appears Chevrolet spent a lot of time on it."*

CARS.COM

*"...genuinely athletic handling and startlingly sophisticated ride quality..."*

EDMUNDS.COM

*"In fact, refinement is the ace up the Cruze's sleeve."*

CARS.ABOUT.COM



*Now see what others  
are saying – or  
have your own say.*



Become a fan of Chevrolet Cruze  
at [facebook.com/chevycruze](https://facebook.com/chevycruze).



Watch us on  
[youtube.com/chevrolet](https://youtube.com/chevrolet).



Follow us on  
[twitter.com/chevrolet](https://twitter.com/chevrolet).