

# 1996 CHEVROLET C/K PICKUPS



LIKE A ROCK





CHEVROLET.  
THE MOST DEPENDABLE,  
LONGEST-LASTING TRUCKS.

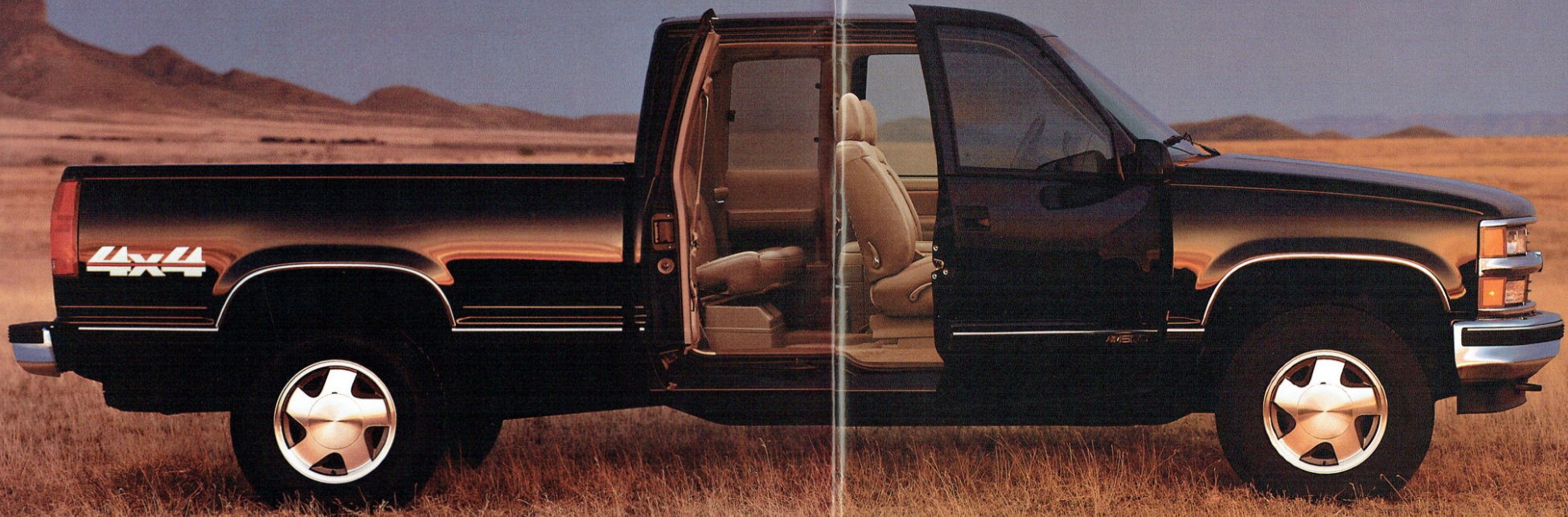
It's a fact: Chevy trucks are the most dependable, longest-lasting trucks on the road.\* And our stylish, comfortable and roomy full-size C/K Pickups prove it better than ever for '96 — with improved and more powerful Vortec gasoline engines, new comfort features and new ideas designed to make every day easier and each drive more enjoyable.

\*Dependability based on longevity: 1985-1994 full-line light-duty truck company registrations. Excludes other GM divisions.

K1500 4x4 Silverado Extended-Cab Short-Box.  
Shown in Dark Garnet Red Metallic with  
optional cast-aluminum wheels.



WE HAVE BIG TRUCK NEWS FOR '96.  
HOW'S THIS FOR OPENERS?



*K1500 4x4 Silverado Extended-Cab Short-Box with optional passenger-side easy-access system. Shown in Onyx Black with optional cast-aluminum wheels.*



C/K PICKUPS FOR 1996. NEW POWER, CONVENIENCE AND SECURITY.

FULL-SIZE C/K COMFORT AND STRENGTH ... PLUS SOME NEW IDEAS.

Chevy C/K Pickups bring you revolutionary new ideas for 1996, including a new passenger-side easy-access system option for Silverado Extended-Cabs,\* dramatically more powerful Vortec gasoline engines and new safety and security features. And there's more news: optional Custom Leather seating surfaces are now available in Silverado Regular-Cab as well as Extended-Cab Pickups — and in more seat styles.

A SPECIAL NOTE FOR PERSONS WITH DISABILITIES.

The optional easy-access system for C/K1500 Silverado Extended-Cab Pickups can provide a convenient new way for drivers and occupants who have disabilities to store mobility aids. Please see page 37 for information about The GM Mobility Program.

**NEW EXTENDED-CAB EASY-ACCESS SYSTEM.**

This revolutionary new option provides wide-open passenger-side access to the Silverado Extended-Cab rear compartment, making it easier and more convenient to load and unload passengers or cargo.\*



**ILLUMINATED ENTRY.**

When doors are unlocked with the available Remote Keyless Entry,<sup>1</sup> interior lights come on automatically. On all 1996 C/K models, the interior lighting stays on briefly after the last door is closed, or until the ignition key is turned.



**CONVENIENT CENTER-STORAGE ARMREST.**

The new multi-feature fold-down center storage armrest for Silverado optional bench and 60/40 split-bench seats includes a writing surface and map net on its lid plus a concealed coin holder and storage for stereo cassette tapes.



**SELF-DIMMING REARVIEW MIRROR.**

Optional with Silverado trim, this electrochromic mirror automatically dims at night to help minimize glare and maintain rear vision. An integral 8-point electronic compass is also included.



**NEW VORTEC GASOLINE ENGINES.**

A new generation of gasoline engines for C/K Pickups provides more power to haul, tow and pass — and they are designed to take you 100,000 miles before requiring their first scheduled tune-up.\*\*



**QUIETER 4x4 TIRES.**

New standard P-metric tires on K1500 4x4 models contribute to a smooth, quiet ride with sidewalls that help absorb road shocks while their all-terrain tread design helps provide a sure grip.



**PUSH-BUTTON**

**INSTA-TRAC 4x4.**

The new optional electric transfer case shift puts your 4x4 into 4-wheel drive at the push of a button. Available on K1500 models, and on K2500 models with GVWRs under 8600 lbs.



**STANDARD AUTOMATIC DAYTIME RUNNING LAMPS.**

Reduced-intensity low beams come on automatically to help other roadway users notice your oncoming vehicle during daytime driving situations.

A TRUCK THAT TAKES CARE OF ITSELF ... AND TAKES CARE OF YOU.

Chevy C/K Pickups for 1996 are designed to virtually take care of themselves. More powerful Vortec gasoline engines require less frequent scheduled tune-ups and include an underhood gauge that alerts you when it's time to change the air filter. The engine coolant is a new long-life type designed to last 100,000 miles, or 5 years (whichever comes first) and new aluminized stainless-steel exhaust systems resist corrosion season after season. And, with the enhanced safety of their new standard automatic Daytime Running Lamps, 1996 C/K Pickups are designed to take better care of you as well.

\*Available only on C/K1500 Extended Cab Short Box with optional Silverado trim level, requires optional Vortec 5000 or Vortec 5700 V8 and automatic transmission. Not available with Deluxe Two-Tone paint. \*\*Requires optional Silverado trim level. \*\*Maintenance needs vary with different uses and conditions. See your owner's manual for more information.



VORTEC ENGINES.  
THE NEW POWER  
IN TRUCKS.

Introducing 1996 Vortec gasoline engines, with Sequential Fuel Injection (SFI) and a host of additional improvements. Every '96 Vortec engine delivers more power to haul, tow and pass than their same-displacement counterparts did last year. Each one is designed to go at least 100,000 miles before needing a tune-up.\* And all are designed to fully retain the dependable, long-lasting durability known and loved by legions of Chevy truck owners.

\*Maintenance needs vary with different uses and conditions. See your owner's manual for more information.

C1500 2WD Silverado Regular-Cab Short-Box. Shown in Indigo Blue Metallic with optional cast-aluminum wheels.





**VORTEC**  
4300 V6  
**40 MORE HORSEPOWER\***

**VORTEC**  
5000 V8  
**45 MORE HORSEPOWER\***

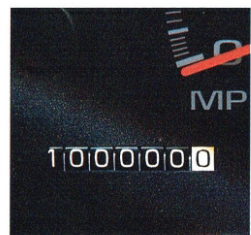
**VORTEC**  
5700 V8  
**50 MORE HORSEPOWER\***

**VORTEC**  
7400 V8  
**60 MORE HORSEPOWER\***

**THE MOST POWERFUL LINE OF ENGINES  
IN CHEVY TRUCK HISTORY.**



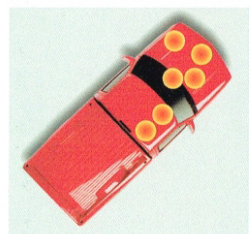
**VORTEC ENGINE POWER SECRETS.**  
Higher compression ratios and reduced friction help '96 Vortec gasoline engines make more power than engines of the same displacement did in last year's Chevy trucks.



**100,000 MILES. BEFORE A TUNE-UP.**  
Extended-life platinum-tip spark plugs and a new long-life coolant help Vortec engines travel 100,000 miles before their first scheduled tune-up and coolant change.\*



**POWER TO HAUL, POWER TO TOW.**  
Improved Vortec engines generate strong low-end torque to get heavy loads moving and provide high-end torque for pulling power on grades.



**SMARTER EMISSIONS DIAGNOSTICS.**  
OBD II, a new generation of On-Board Diagnostics, monitors emissions-control system performance electronically and helps technicians provide quick, accurate service.



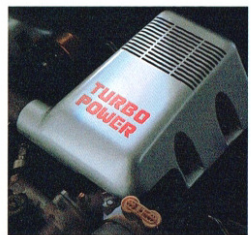
**SMOOTHER TAKE-OFFS.**  
A new and more driver-friendly progressive accelerator linkage helps you roll out Vortec engine power in a smooth, steady flow.



**NOW IT'S EASIER TO SHIFT FOR YOURSELF.**  
A new concentric-design slave clutch for all C/K models with manual transmission helps reduce clutch pedal effort and shortens pedal travel.



**GETTING THE MOST OUT OF EVERY DROP.**  
Patented Sequential Fuel Injection helps Vortec engines squeeze maximized power and efficiency out of every drop of gasoline.



**DIESEL POWER IS AVAILABLE.**  
A diesel just makes more dollars and sense for some folks, so Chevy offers the powerful 6.5 Liter Turbo-Diesel V8 as an option for most 1996 C/K Pickup models.

Improved Vortec gasoline engines provide impressive power gains for 1996. The new 220-HP Vortec 5000 V8, for example, actually produces 20 more horsepower than last year's larger displacement 5.7 Liter V8. But dramatic power increases are only part of the Vortec story. Sequential Fuel Injection (SFI) and a High Efficiency Ignition system help these engines start almost instantly, whatever the weather. And Vortec engines are exceptionally quiet and smooth, both at idle and under load. Improved Vortec engines for 1996: putting new power and value into your dependable, long-lasting Chevy truck.

\*Compared to same-displacement engine offered in 1995 C/K Pickup models. See page 28 for complete 1996 Vortec engine horsepower and torque ratings.

\*Maintenance needs vary with different uses and conditions. See your owner's manual for more information. Recommended engine coolant change interval is 100,000 miles or five years, whichever comes first.




THE WORLD OUT THERE TENDS TO LOOK MORE FRIENDLY  
WHEN THERE'S A C/K PICKUP BETWEEN YOU AND IT.



CHEVROLET  
Supplemental information

*C/K Silverado instrument panel. Shown with optional 4x4 transfer case electric shift control, optional AM/FM stereo with cassette tape player and CD player and additional options.*



A high-angle photograph of the interior of a C/K Silverado Extended-Cab truck. The image shows the front and rear seats upholstered in a light tan leather. The front seats are high-back bucket seats with a contoured design. The center console is visible between the front seats, featuring a gear shifter and handbrake. The dashboard and steering wheel are partially visible in the upper right corner. The overall lighting is warm, highlighting the texture of the leather and the interior trim.

**C/K SILVERADO  
EXTENDED-CAB  
WITH LEATHER.  
BETTER THAN A  
CORNER OFFICE  
WITH WINDOWS.**

What you see here is simply the most luxurious, comfortable, spacious and friendly interior we've ever put into a full-size pickup. Front seats are contoured for exceptional comfort and, with Silverado trim, include power lumbar supports.\* For the ultimate in C/K Silverado luxury, specify optional Custom Leather seating surfaces for your new truck — now available with a 60/40 split-bench seat or optional high-back bucket seats in Silverado Extended-Cabs, and in Silverado Regular-Cabs with optional uplevel bench seat or 60/40 split-bench seat.†

\*Except with vinyl interior trim. †Custom Leather seating surfaces are included with optional Silverado Preferred Equipment Group 1SC.

K1500 4x4 Silverado Extended-Cab interior. Shown in Neutral with optional Custom Leather seating surfaces, optional front high-back bucket seats and additional options.



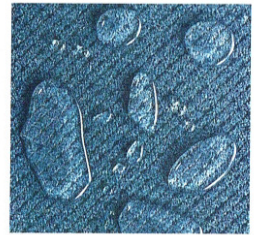


*K1500 4x4 Silverado Regular-Cab interior. Shown in Blue Custom Cloth with optional 60/40 split-bench seat with center fold-down storage armrest and additional options.*

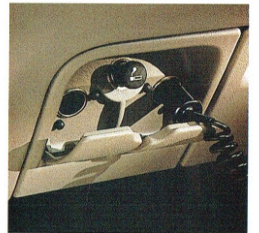
**C/K PICKUP INTERIOR FEATURES.  
COMFORT AND CONVENIENCE FOR THE LONG HAUL.**



**EXTENDED-CAB VERSATILITY.**  
The Extended-Cab rear seat-back folds down to make a handy load shelf. Or you can fold the lower cushion up to create a floor-to-roof storage area.



**QUICK CLEANUPS WITH SCOTCHGARD™ PROTECTOR.**  
Carpeting, cloth seats and cloth door panels are mill-treated with stain-resistant Scotchgard™ Protector to help make cleanups quick and easy.



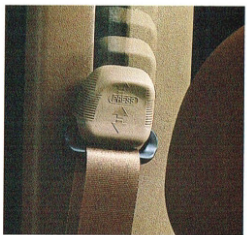
**POWER FOR ELECTRONIC ACCESSORIES.**  
Standard covered dual power outlets are ideal for your electronic accessories — and the lighter receptacle provides a third power source.



**CONTROL CENTRAL.**  
Backlit switches for the Silverado trim level's standard power windows, power door locks and power exterior rearview mirrors are conveniently grouped on the driver's door panel.



**REMOTE KEYLESS ENTRY.**  
Optional with Silverado trim, Remote Keyless Entry provides remote locking and unlocking from up to 30 ft. away, and also activates interior lighting.



**ADJUSTABLE SHOULDER SAFETY BELTS.**  
A sliding vertical adjustment allows individualized shoulder safety belt comfort for the driver and right-front passenger.



**NOW SERVING ALL PASSENGERS.**  
Optional Silverado high-back front bucket seats include a center console with dual cup holders and a slide-out storage drawer for rear-seat passengers.\*



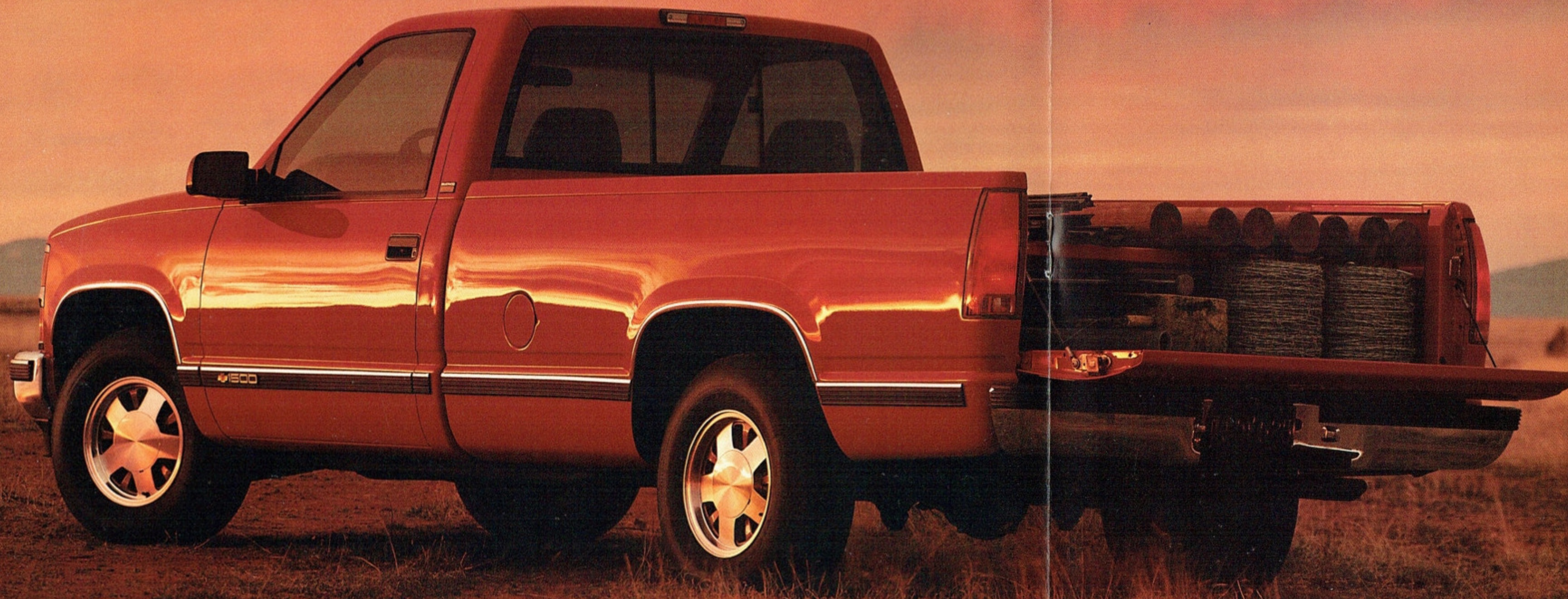
**TOUGH-WEARING VINYL IS STANDARD.**  
A 3-across front bench seat, trimmed in rugged vinyl, is standard in C/K Regular-Cab and Crew-Cab Pickups. A vinyl 60/40 split-bench is standard in Extended-Cabs.

We've done everything we can to ensure your C/K Pickup will be one unforgettably dependable, long-lasting truck. From day one, you'll appreciate the durability and quality designed into your new C/K Pickup as much as you do its generous comforts and conveniences. And the same admirable attributes that make C/K Pickup ownership so enjoyable over the long haul are very likely to bring you a bonus in the long run: over the last seven years, Chevy's had the highest cumulative average resale value of any full-size pickup!

\*The rear-seat passenger cup holder and slide-out storage drawer are deleted when this console is ordered in C/K Regular-Cab Pickups. †Based on a comparison of wholesale trade-in values for 1988-1994 models from the April 1995 NADA Official Used Car Trade-In Guide to MSRP for vehicles when new. Excludes other GM products.



WORK GOES EASIER WITH A GOOD PARTNER.  
CHEVY C/K LONG-BOX PICKUP.



*C1500 2WD Silverado Regular-Cab Long-Box.  
Shown in Victory Red with optional cast-aluminum wheels.*



## LONG-LASTING QUALITY FROM TOP TO BOTTOM.

**A LASTING SHINE.**  
C/K Pickups have an enduring "just-waxed" look that comes from a base-coat/clear-coat finish that tops off a multi-layer paint system that provides corrosion protection in addition to the beautiful easy-care finish.

**CORROSION-RESISTANT EXTERIOR PANELS.**  
Two-side-galvanized steel exterior body panels (except the roof) virtually eliminate corrosion resulting from scratches and chips.

**PANELS ARE RIBBED FOR STRENGTH.**  
Ribbed embossments in the C/K Pickup cab floor, back panels and cargo box floor add strength to the sheet metal — without adding weight.

**HANDY TWO-TIER CARGO LOADING.**  
Indented sidewalls in Fleetside cargo boxes let you use planks or 2" x 6"s to create two loading tiers or separate upper- and lower-cargo areas.



**PLENTY OF STOPPING POWER.**  
Power front disc/rear drum brakes and a 4-wheel anti-lock brake system (ABS) are standard on every 1996 C/K Pickup.

**PRECISION-ALIGNED DOOR HINGES.**  
Door hinges are robotically welded to door frames for a precise fit that will remain firmly in position over time and through rough driving conditions.

**NO-CATCH BOX FLOOR.**  
The C/K Pickup cargo box floor is free of exposed bolt heads. This helps make loading and unloading easier, helps safeguard cargo and eliminates another possible source of corrosion.

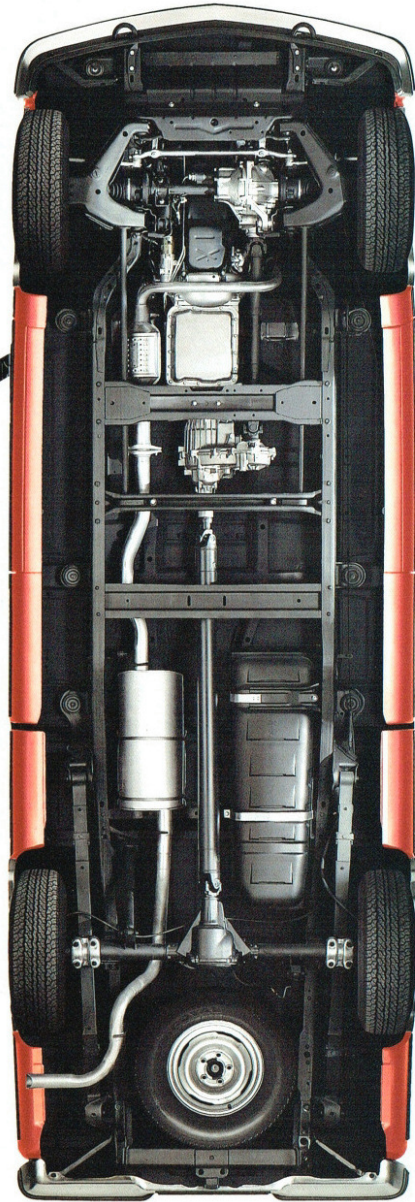
**A QUIET TAILGATE.**  
Vinyl-sheathed steel tailgate support cables are virtually rattle-proof and help make removal a simple, tool-free operation.

**INDEPENDENT FRONT SUSPENSION.**  
Proven dependable over decades of use, rugged and reliable independent front suspension helps keep front wheels virtually straight up and down, for a stable ride and enhanced control.

**VARIABLE-RATIO POWER STEERING.**  
Standard variable-ratio integral power steering makes low-speed maneuvering easy while providing excellent response and on-center feel at higher speeds.

**SMOOTH-SHIFTING AUTOMATICS.**  
The optional electronically controlled 4-speed automatic overdrive transmission shifts with smooth precision and automatically compensates for load and grade variances.

**ALUMINIZED STAINLESS-STEEL EXHAUST SYSTEM.**  
With a muffler and all pipes, from the converter back, made of corrosion-resistant aluminized stainless steel, you won't have to give your new C/K Pickup's exhaust system another thought for a good long time.



**A BACKBONE OF STEEL.**  
The ladder-type frame's heavy C-channel side rails have boxed front sections, for added strength. Cross members are bolted, welded and riveted to resist twisting and flexing. Then the entire frame is dipped in a hot-wax bath to help it resist corrosion.

**INSTA-TRAC 4x4.**  
The most relied-upon 4x4 system on the road\* lets you shift on the fly from 2WD to 4WD. High and back at any road speed. Insta-Trac is standard on all 4x4 models.

\*Based on total reported registrations of GM models using the Insta-Trac 4x4 system vs. competitive 4-wheel-drive systems.

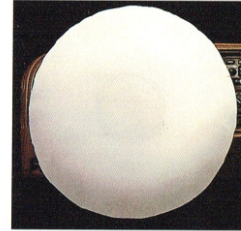
**LONG-RANGE FUEL TANK.**  
A large fuel tank lets you put in plenty of miles between stops. Short-Box and Sportside models have a 25-gallon tank. Long-Box models include a 34-gallon tank.

**2-STAGE MULTI-LEAF REAR SPRINGS.**  
As load weight increases, specially designed second-stage springs engage smoothly to provide additional support — without sacrificing ride quality.





## A TOTAL SAFETY SYSTEM YOU CAN DEPEND ON.



**STANDARD DRIVER AIR BAG.\***  
The C/K Pickup driver air bag is designed to help reduce injury in certain moderate to severe frontal collisions. Always wear safety belts, even with air bags.



**STANDARD 4-WHEEL ABS.**  
The standard C/K Pickup anti-lock brake system (ABS) is designed to help keep you in control by minimizing wheel lockup and skidding on most slippery surfaces.



**CRUSH ZONES.**  
The C/K Pickup frontal structure is designed to "crush" in a controlled manner during a collision to help absorb crash energy.



**SIDE-DOOR BEAMS.**  
Structural steel side-door beams are designed to help prevent intrusions into the passenger compartment during shallow-angle side collisions and may help deflect a striking vehicle away in a "glancing" side impact.

\*Air bag included on C/K Pickup models with GVWRs under 8600 lbs. only.

Starting with safety-cage construction that surrounds you and your passengers with a rigid cage of steel, C/K Pickups include an abundance of state-of-the-art safety features that make up a total safety system designed to add peace of mind to every mile you travel. The features listed here are standard on every 1996 C/K Pickup, unless noted.

### OCCUPANT PROTECTION.

- Supplemental Inflatable Restraint: manual lap/shoulder safety belts, driver and right-front passenger, and driver air bag (with GVWRs under 8600 lbs.)
- Manual lap/shoulder safety belts, driver and right-front passenger (with GVWRs at 8600 lbs. and above)
- Manual lap/shoulder belts, outboard rear-seat positions (Extended-Cab and Crew-Cab)
- Manual lap safety belts, center-seat positions
- Adjustable upper belt anchors (front outboard seating positions)
- Child safety seat provision: dual mode retractors and locking latch plate
- Energy-absorbing steering column
- Energy-absorbing instrument panel
- Interlocking door latches
- Safety armrests
- Breakaway inside rearview mirror
- Security door locks and door-retention components
- Laminated windshield glass, urethane-bonded
- Head restraints, front and rear seats (outboard seating positions only)
- Side-door beams
- Safety belt use reminder system
- Tempered safety

- glass, side and rear windows
- Dual sun visors
- Pressure-lock radiator cap
- Self-aligning steering wheel (with GVWRs at 8600 lbs. and above).

### CRASH AVOIDANCE.

- Four-wheel anti-lock brake system (ABS)
- Automatic Daytime Running Lamps
- Side-marker lamps and reflectors
- Parking lamps
- Four-way hazard-warning flashers
- Backup lamps
- Directional signal control
- Center high-mounted stop lamp
- Windshield defrosters, washers and multi-speed wipers
- Front side-window defoggers
- Outside rearview mirrors
- Brake system with dual master cylinder plus warning light
- Starter safety switch
- Dual-action hood latch
- Low-glare finish — inside windshield moldings, wiper arms and blades, metallic steering wheel surfaces, inside rearview mirror frame and bracket
- Illuminated heater and defroster controls
- Tires with built-in tread-wear indicators
- Safety road wheel rims
- Inside day/night mirror
- Brake/transmission shift interlock (with automatic transmission).

### THEFT DETERRENCE.

- Visible vehicle identification number
- Laser-etched VIN plate
- Theft-deterrent steering column lock
- Theft-deterrent key-locking system
- Remote inside hood release
- Ignition key removal audible reminder.



SHOW SOME ATTITUDE.  
C/K SPORTSIDE SPORT.



*K1500 4x4 Silverado Regular-Cab  
with Sportside Box. Shown in Onyx Black  
with optional Sport Package.*



## GENUINE CUSTOMER CARE. YOU NEVER TRAVEL ALONE.

Your complete satisfaction with your Chevy truck — from the day you buy it to the day you sell it — is what Genuine Customer Care is really all about. It means we'll be here when you need us. That's a promise. Genuine Customer Care is a comprehensive owner-protection program that includes the following:

### 24-HOUR ROADSIDE ASSISTANCE.

Lost? We'll help you find your way. Locked out? We'll get you back in your truck. Out of gas? We'll get you gas. Roadside Assistance is provided through a toll-free number (1-800-CHEV-USA or 1-800-243-8872) 24 hours a day, 365 days a year. Roadside Assistance offers two levels of service, *Basic Care* and *Courtesy Care*.

*Roadside Basic Care* provides:

- Free towing for warranty repairs (to closest dealer)
- Over-the-phone basic technical advice
- Available dealer services at reasonable costs (i.e., wrecker

services, locksmith/key service, glass repair, etc.). Roadside Basic Care covers you as long as you own your truck.

### *Roadside Courtesy Care* provides:

- Free towing (to closest dealer)
  - Free locksmith/key service (when keys are lost on the road or locked inside)
  - Free flat tire service, jump start and fuel delivery.
- Roadside Courtesy Care is available to you for a period of three years or 36,000 miles (whichever comes first).

### NO-DEDUCTIBLE BUMPER TO BUMPER WARRANTY.

The GM 3-year/36,000-mile (whichever comes first) New

Vehicle Limited Warranty covers repairs to 1996 Chevy C/K Pickups, including labor and parts, to correct any defects in material or workmanship occurring during the warranty period. Warranty features include air conditioning repair, towing, no-cost warranty transfer and 6-year/100,000-mile (whichever comes first) sheet-metal rust-through protection. There is also emissions-control system coverage, which varies by geographical region. Items not covered include tires (which are covered by their manufacturer) and normal maintenance. Additional service protection is available with the optional GM Protection Plan



(available only in the U.S. and Canada). See your Chevrolet dealer for full terms of the standard New Vehicle Limited Warranty and for details about the GM Protection Plan option.

### COURTESY TRANSPORTATION.

Customers who purchase or lease a 1996 Chevy C/K Pickup will be able to take advantage of Courtesy Transportation at no additional charge when their vehicles are left at a participating dealer for repairs covered under the 3-year/36,000-mile New Vehicle Limited Warranty. See your participating dealer for details.



### CHEVROLET CUSTOMER SATISFACTION SYSTEM.



Local Chevrolet dealerships are vital links in our customer satisfaction system. At delivery, your Chevy salesperson will introduce you to your new truck and explain all warranties and maintenance schedules. To make sure you are completely familiar with the features and operation of your new vehicle, the salesperson will accompany you on a test drive. Just as importantly, Chevrolet dealer service advisors and technicians are highly trained and equipped with advanced diagnostic and repair equipment, helping to ensure your long-term satisfaction with maintenance and

repair work performed on your vehicle. It's also good to know, when you travel long distances, that there are more than 4400 Chevy dealers in the U.S. — each one ready to provide you with professional service and genuine GM parts. You can phone the Chevrolet Customer Assistance Center toll free at 1-800-222-1020 to talk with trained experts regarding any Chevrolet product or service questions you may have.

### A SPECIAL WORD ABOUT THE WORLD WE SHARE.

Chevrolet/Geo encourages you to join us in our commitment to help conserve the natural beauty and ecological health of the great American outdoors. We proudly support a number of

conservation initiatives — including habitat and ecosystem recovery projects and environmental programs — through our partnerships with non-profit organizations, such as the National Fish and Wildlife Foundation (NFWF) and Tread Lightly! Inc. To learn more about outstanding environmental programs such as these, and how you can become involved, please call Chevrolet/Geo Environmental toll free at 1-800-873-3436.



**TREAD LIGHTLY!** OFFICIAL SPONSOR  
ON PUBLIC AND PRIVATE LAND



THE CHEVY C/K PICKUP FAMILY FOR 1996 THERE'S DEPENDABLE, LONG-LASTING VALUE IN EVERY ONE.

**C/K REGULAR-CAB PICKUPS.**  
**A STANDARD OF VALUE.**  
 From the basic W/T1500 Work Truck shown here to the most luxurious and loaded Silverado, every C/K Regular-Cab Pickup comes with a full measure of dependable, long-lasting Chevy Truck value.



**C/K EXTENDED-CAB PICKUPS.**  
**MORE VERSATILE ROOM INSIDE.**  
 Popular C/K Extended-Cab Pickups offer enhanced pickup versatility and utility. The Extended-Cab is available in every C/K Series: 1500, 2500 and 3500. A K2500 Extended-Cab Long-Box Pickup is shown at right.



**THE TRUCK YOU WANT WITH THE BOX YOU NEED.**  
 Three box designs — the Fleetside Short-Box, Fleetside Long-Box and the distinctive Sportside Box shown here on a C1500 Extended-Cab — provide a variety of bed styles and capacities for C/K Pickups. See the Model Specifications chart on page 29 for box availability by model.



**C/K3500 BIG DOOLEY.**  
**TOW BIG LOADS IN STYLE.**  
 C/K3500 Series 1-ton Regular-Cab and Extended-Cab models pull big loads with ease — up to 10,000 lbs., when properly equipped. "Big Dooley" dual rear wheels are standard on C/K3500 Extended-Cabs, optional on C/K3500 Regular-Cab and Crew-Cab models.

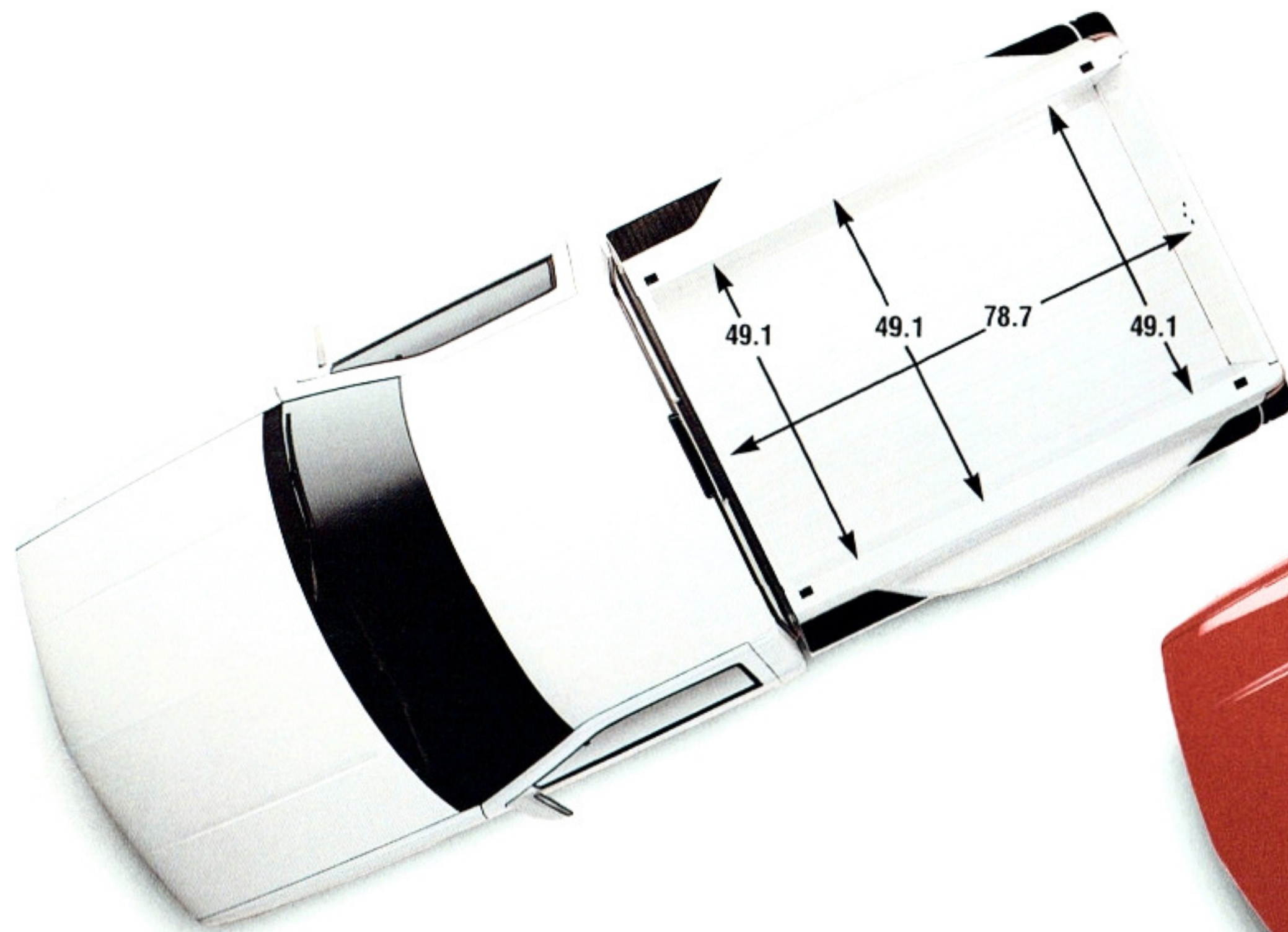


**C/K3500 CREW-CAB PICKUP.**  
**TALK ABOUT DOING IT ALL.**  
 Six-passenger trucks don't come any bigger, stronger or roomier than full-size C/K Crew-Cab. A Fleetside Long-Box is standard, "Big Dooley" dual rear wheels are optional.

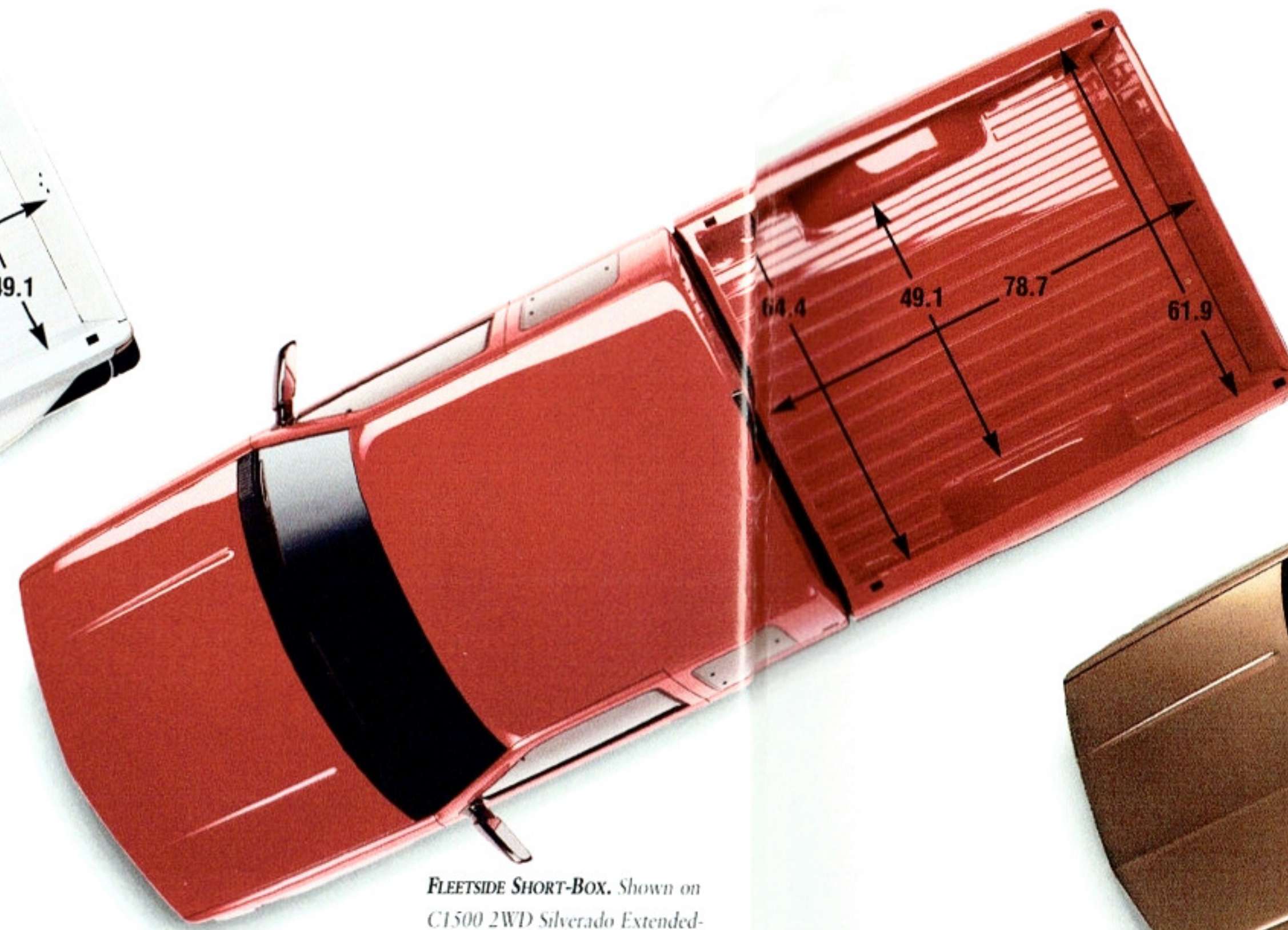


**A BRIEF COMMERCIAL MESSAGE.**  
 For information about dependable, long-lasting Chevy commercial models such as this C3500 HD Chassis-Cab (shown with utility body from an independent supplier), ask your dealer for a 1996 Chevrolet Commercial Vehicles brochure or call the Chevrolet Commercial Specialty Vehicle Department Express Line at 1-800-759-5550.

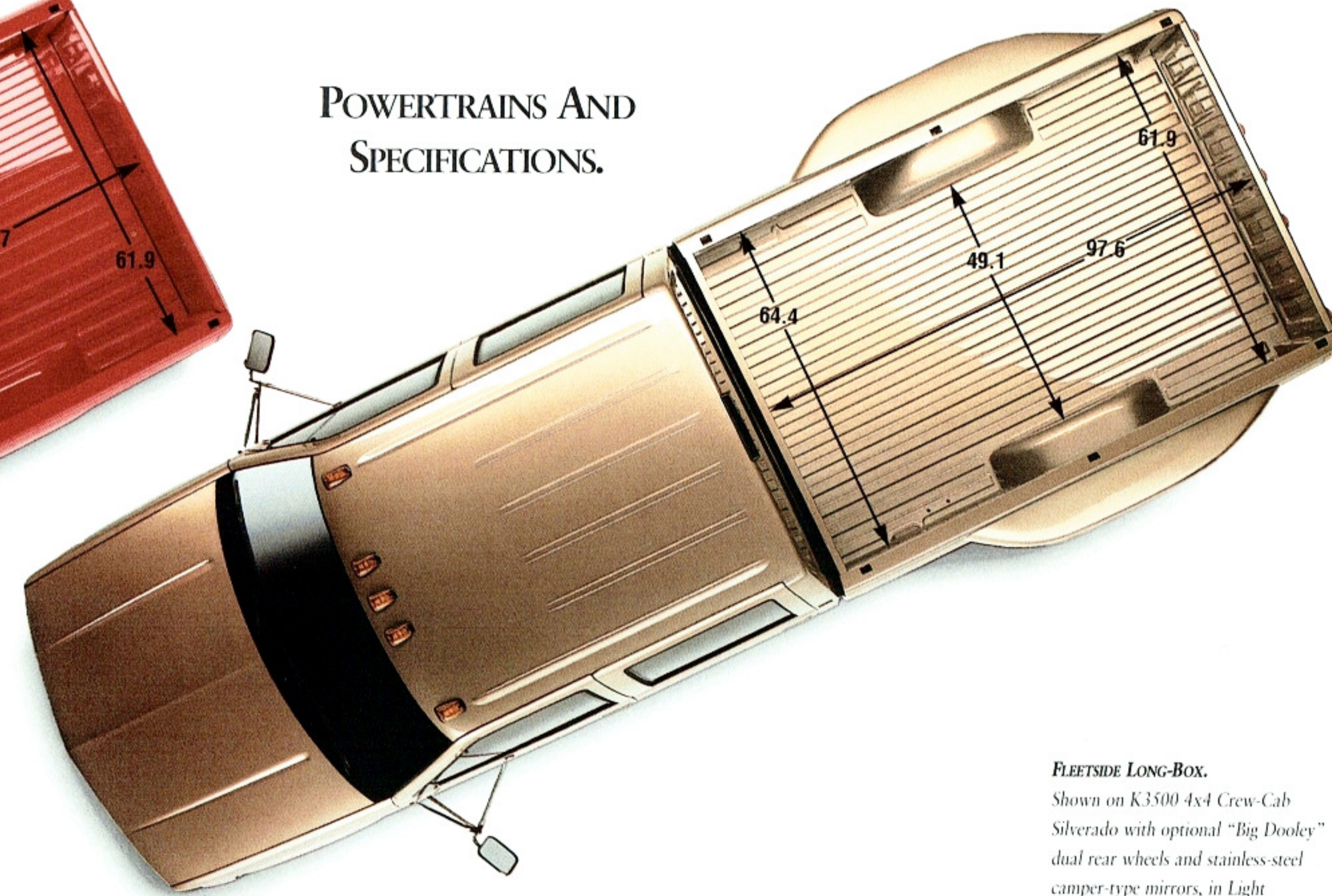




**SPORTSIDE BOX.** Shown on C1500 2WD Silverado Regular-Cab in Summit White.



**FLEETSIDE SHORT-BOX.** Shown on C1500 2WD Silverado Extended-Cab in Victory Red.



**FLEETSIDE LONG-BOX.** Shown on K3500 4x4 Crew-Cab Silverado with optional "Big Dooley" dual rear wheels and stainless-steel camper-type mirrors, in Light Autumnwood Metallic.

## POWERTRAINS AND SPECIFICATIONS.

### ENGINE SPECIFICATIONS

ENGINE	C/K1500 & C/K2500 MODELS				C/K2500 w/C6P <sup>1</sup> & C/K3500 MODELS		
	Vortec 4300 V6 w/SFI <sup>1</sup> (RPO L35)	Vortec 5000 V8 w/SFI <sup>1</sup> (RPO L30)	Vortec 5700 V8 w/SFI <sup>1</sup> (RPO L31)	6.5 Liter Turbo-Diesel V8 <sup>2,4</sup> (RPO L56)	Vortec 5700 V8 HD <sup>5</sup> w/SFI <sup>1</sup> (RPO L31)	Vortec 7400 V8 w/SFI <sup>1</sup> (RPO L29)	6.5 Liter Turbo-Diesel <sup>2</sup> V8 HD <sup>5</sup> (RPO L65)
Displacement (liters/cu. in.)	4.3/262	5.0/305	5.7/350	6.5/400	5.7/350	7.4/454	6.5/400
Compression Ratio	9.2:1	9.4:1	9.4:1	21.5:1	9.4:1	9.0:1	21.5:1
SAE Net HP @ RPM	200 @ 4400	220 @ 4600	250 @ 4600	180 @ 3400	245 @ 4600 <sup>6</sup>	290 @ 4200	190 @ 3400
SAE Net Torque (lb.-ft.) @ RPM	255 @ 2800	285 @ 2800	335 @ 2800	360 @ 1700	325 @ 2800	410 @ 3200	385 @ 1700

### POWERTRAIN AVAILABILITY

ENGINE	C/K1500 & C/K2500 MODELS				C/K2500 w/C6P <sup>1</sup> & C/K3500 MODELS		
	Vortec 4300 V6 w/SFI <sup>1</sup> (RPO L35)	Vortec 5000 V8 w/SFI <sup>1</sup> (RPO L30)	Vortec 5700 V8 w/SFI <sup>1</sup> (RPO L31)	6.5 Liter Turbo-Diesel V8 <sup>2,4</sup> (RPO L56)	Vortec 5700 V8 HD <sup>5</sup> w/SFI <sup>1</sup> (RPO L31)	Vortec 7400 V8 w/SFI <sup>1</sup> (RPO L29)	6.5 Liter Turbo-Diesel <sup>2</sup> V8 HD <sup>5</sup> (RPO L65)
<b>MODEL AVAILABILITY</b>							
C/K1500: Regular-Cab & Extended-Cab <sup>7</sup>	S	O	O	O	-	-	-
C/K2500: Regular-Cab & Extended-Cab <sup>8</sup>	-	S <sup>9</sup>	O	O	S	O	O
C/K3500: Regular-Cab, Extended-Cab, Crew-Cab	-	-	-	-	S	O	O

### TRANSMISSION AVAILABILITY

TRANSMISSION	C/K1500 & C/K2500 MODELS				C/K2500 w/C6P <sup>1</sup> & C/K3500 MODELS		
	Vortec 4300 V6 w/SFI <sup>1</sup> (RPO L35)	Vortec 5000 V8 w/SFI <sup>1</sup> (RPO L30)	Vortec 5700 V8 w/SFI <sup>1</sup> (RPO L31)	6.5 Liter Turbo-Diesel V8 <sup>2,4</sup> (RPO L56)	Vortec 5700 V8 HD <sup>5</sup> w/SFI <sup>1</sup> (RPO L31)	Vortec 7400 V8 w/SFI <sup>1</sup> (RPO L29)	6.5 Liter Turbo-Diesel <sup>2</sup> V8 HD <sup>5</sup> (RPO L65)
5-Speed OD Manual (RPO MG5)	S	S	-	-	-	-	-
5-Speed OD Manual (RPO M50)	-	-	S	-	-	-	-
5-Speed OD Manual, Heavy-Duty (RPO MW3)	-	-	-	-	S	S	S
4-Speed OD Automatic <sup>10</sup> (RPO M30)	O	O	O	-	-	-	-
4-Speed OD Automatic <sup>10</sup> , Heavy-Duty (RPO MT1)	-	-	-	S	O	O	O

S — Standard O — Optional

<sup>1</sup> C6P is an optional heavy-duty GVW rating. <sup>2</sup> This diesel engine includes an exclusive 5-year/100,000-mile warranty (\$100 deductible per repair visit after 3 years/36,000 miles). Ask your Chevy Truck dealer for terms of this limited warranty. <sup>3</sup> Sequential Fuel Injection. <sup>4</sup> Not available on short wheelbase models. <sup>5</sup> Heavy-Duty Emissions. <sup>6</sup> 245 @ 4400 RPM with GVWR of 10,000 lbs. and above. <sup>7</sup> W/11500 package requires RPO L35 Vortec 4300 Gas V6. <sup>8</sup> Commercial 2500 package requires RPO L30 Vortec 5000 Gas V8 or RPO L56 6.5 Liter Turbo-Diesel V8. <sup>9</sup> Standard C2500 2WD with 7200-lb. GVWR only. <sup>10</sup> Electronically controlled.

### MODEL SPECIFICATIONS

MODEL	SERIES	DRIVE (SERIES)	LENGTH (IN.)	WHEELBASE (IN.)	SEATING	GVWR <sup>1</sup> (LBS.)	BASE PAYLOAD <sup>2</sup> (LBS.)
Regular-Cab Sportside Box	1500 (1/2-ton)	2WD (C) 4 x 4 (K)	194.5	117.5	Std.-3 Opt.-2	6100 6100	2249 1817
Regular-Cab Fleetside Short-Box	1500 (1/2-ton)	2WD (C) 4 x 4 (K)	194.5	117.5	Std.-3 Opt.-2	6100 6100	2260 1828
Regular-Cab Fleetside Long-Box	1500 (1/2-ton)	2WD (C) 4 x 4 (K)	213.4	131.5	Std.-3 Opt.-2	6100 6100	2110 1679
	2500 (3/4-ton)	2WD (C) 4 x 4 (K)	213.4	131.5	Std.-3 Opt.-2	7200/8600 8600	2931 2560
	3500 (1-ton)	2WD (C) 4 x 4 (K)	213.4	131.5	Std.-3 Opt.-2	9000/10,000 9200/10,000	4202 4019
Extended-Cab Sportside Box	1500 (1/2-ton)	2WD (C) 4 x 4 (K)	217.9	141.5	Std.-6 Opt.-3 or 5	6200 6200/6600	2068 1663
Extended-Cab Fleetside Short-Box	1500 (1/2-ton)	2WD (C) 4 x 4 (K)	217.9	141.5	Std.-6 Opt.-3 or 5	6200 6200/6600	2079 1674
	2500 (3/4-ton)	2WD (C) 4 x 4 (K) <sup>3</sup>	217.9	141.5	Std.-6 Opt.-3 or 5	7200 8600	2800 3261
Extended-Cab Fleetside Long-Box	1500 (1/2-ton)	2WD (C) 4 x 4 (K)	236.6	155.5	Std.-6 Opt.-3 or 5	6200 6200/6600/6800	1849 1419
	2500 (3/4-ton)	2WD (C) 4 x 4 (K)	236.6	155.5	Std.-6 Opt.-3 or 5	8600 8600	3639 3261
	3500 (1-ton)	2WD (C) 4 x 4 (K)	236.6	155.5	Std.-6 Opt.-3 or 5	9000/10,000 10,000	4662 4222
Crew-Cab Fleetside Long-Box	3500 (1-ton)	2WD (C) 4 x 4 (K)	250.9	168.5	Std.-6 Opt.-5	9000/9600/10,000 9200/10,000	3525 3373

<sup>1</sup> Gross vehicle weight rating (GVWR) includes vehicle, passengers, equipment and cargo. All GVWRs of 10,000 lbs. or higher require dual rear wheels. <sup>2</sup> Base payload computed by subtracting curb weight from GVWR. Payload ratings are based on engineering test weights at time of printing. <sup>3</sup> Model availability scheduled for spring 1996. **NOTE:** Please see "A Note About Bedliners" on page 35 if you plan to add a bedliner to your C/K Pickup's box.



## TRAILERING DATA.

### BALL HITCH TRAILERING

Engine Transmission	Vortec 4300 V6 Automatic or Manual <sup>1</sup>			Vortec 5000 V8 Automatic or Manual <sup>1</sup>			Vortec 5700 V8 Automatic or Manual			Vortec 7400 V8 Automatic or Manual		
	Max. Trailer Weight <sup>2</sup> (lbs.)	Max. Tongue Load (lbs.)	Required Axle Ratio	Max. Trailer Weight <sup>2</sup> (lbs.)	Max. Tongue Load (lbs.)	Required Axle Ratio	Max. Trailer Weight <sup>2</sup> (lbs.)	Max. Tongue Load (lbs.)	Required Axle Ratio	Max. Trailer Weight <sup>2</sup> (lbs.)	Max. Tongue Load (lbs.)	Required Axle Ratio
C1500 (2WD) Reg. Cab/Ext. Cab	4000 5000	400 600	3.08 3.42	5000 6000	600 750	3.08 3.42	5500 6500 7500	700 800 900	3.08 3.42 3.73			
K1500 (4x4) Reg. Cab/Ext. Cab	5000	600	3.73	5500 6500	700 800	3.42 3.73	6000 7000	750 850	3.42 3.73			
C2500 (2WD) Reg. Cab/Ext. Cab				5500 6500	700 800	3.42 3.73	6000 7000 8000	750 850 950	3.42 3.73 4.10			
K2500 (4x4) Reg. Cab/Ext. Cab				6000	750	3.73	6500 7500	800 900	3.73 4.10			
C3500 (2WD) Reg. Cab/Ext. Cab							8000 9500	950 1000	4.10 4.56	10,000 10,000	1000 1000	4.10 4.56
K3500 (4x4) Reg. Cab/Ext. Cab							7500	900	4.10	10,000 10,000	1000 1000	4.10 4.56
C3500 (2WD) Crew Cab							7500 9000	900 1000	4.10 4.56	10,000 10,000	1000 1000	4.10 4.56
K3500 (4x4) Crew Cab							7000 8500	850 1000	4.10 4.56	10,000 10,000	1000 1000	4.10 4.56

<sup>1</sup> Trailer ratings are based on Vortec 4300 V6 and Vortec 5000 gasoline engines and all diesel engines with manual transmissions. See GVWR chart. <sup>2</sup> Maximum trailer weight is calculated assuming the driver and one passenger are in the tow vehicle, and it has all required trailering equipment. The weight of additional optional equipment, passengers and cargo in the tow vehicle must be subtracted from the maximum trailer weight.

### FIFTH-WHEEL TRAILERING

Engine Transmission	Vortec 5000 V8 Automatic <sup>1</sup>			Vortec 5700 V8 Automatic or Manual			Vortec 7400 V8 Automatic or Manual			6.5 Liter Turbo-Diesel V8 Automatic		
	Max. Trailer Weight <sup>2</sup> (lbs.)	Max. Kingpin Load (lbs.)	Required Axle Ratio	Max. Trailer Weight <sup>2</sup> (lbs.)	Max. Kingpin Load (lbs.)	Required Axle Ratio	Max. Trailer Weight <sup>2</sup> (lbs.)	Max. Kingpin Load (lbs.)	Required Axle Ratio	Max. Trailer Weight <sup>2</sup> (lbs.)	Max. Kingpin Load (lbs.)	Required Axle Ratio
C1500 (2WD) Reg. Cab/Ext. Cab	6000	1500	3.42	6500 7500	1500 1500	3.42 3.73						
K1500 (4x4) Reg. Cab/Ext. Cab	5500 6500	1200 1200	3.42 3.73	6000 6500	1200 1200	3.42 3.73						
C2500 (2WD) Reg. Cab/Ext. Cab				6000 7000 7000 <sup>3</sup> 8000 <sup>3</sup>	2000 2000 3000 <sup>3</sup> 3000 <sup>3</sup>	3.42 3.73 3.73 4.10				6500 7500 7500 <sup>3</sup> 8500 <sup>3</sup>	1600 1600 2500 <sup>3</sup> 2500 <sup>3</sup>	3.42 3.73 3.73 4.10
K2500 (4x4) Reg. Cab/Ext. Cab				6500 <sup>1</sup> 7500 <sup>1</sup>	2500 <sup>2</sup> 2500 <sup>2</sup>	3.73 4.10				7000 <sup>1</sup> 8000 <sup>1</sup>	2000 <sup>1</sup> 2000 <sup>1</sup>	3.73 4.10
C3500 (2WD) Reg. Cab/Ext. Cab				8000 9500	3000 3000	4.10 4.56	11,000 13,000	3000 3000	4.10 4.56	8500	3000	4.10
K3500 (4x4) Reg. Cab/Ext. Cab				7500	3000	4.10	10,500 12,500	3000 3000	4.10 4.56	8000	3000	4.10
C3500 (2WD) Crew Cab				7500 9000	3000 3000	4.10 4.56	10,500 12,500	3000 3000	4.10 4.56	8000	3000	4.10
K3500 (4x4) Crew Cab				7000 8500	3000 3000	4.10 4.56	10,500 12,500	3000 3000	4.10 4.56	8000	3000	4.10

<sup>1</sup> C/K1500 models are rated for both rated trailering with automatic transmissions only. <sup>2</sup> Maximum trailer weight is calculated assuming the driver and one passenger are in the tow vehicle, and it has all required trailering equipment. The weight of additional optional equipment, passengers and cargo in the tow vehicle must be subtracted from the maximum trailer weight. <sup>3</sup> With optional 6600 lb. or higher GVWR.

## TRAILERING WITH YOUR NEW CHEVY PICKUP.

### BALL HITCH TRAILERING NOTE.

When towing with a weight-carrying trailer hitch, do not exceed these limits: 4000-lb. maximum trailer weight, 400-lb. maximum tongue load.  A transmission oil cooler is standard equipment on all C/K Pickups equipped with an automatic transmission.  For trailer ratings above 2000 lbs., an RPO KC4 engine oil cooler is required on C/K Pickup models with Vortec gasoline engines, and C/K2500 models with Vortec gasoline engines (except the Vortec 7400 V8) and a 3.73 or lower axle ratio. The engine oil cooler is included with the optional Vortec 7400 V8 and optional diesel engines.  For trailer ratings above 4000 lbs., optional heavy-duty shock absorbers (RPO F51) or gas-charged Bilstein shock absorbers (RPO FG5) are required on C1500 models, and optional heavy-duty shock absorbers (RPO F51) or off-road chassis package (RPO Z71) is required on K1500 models.  A 7-wire trailer wiring harness is standard on all C/K Pickup models.  An optional (RPO Z82) heavy-duty trailering equipment package is available and includes a weight-distributing hitch platform, engine oil cooler (when not already included) and heavy-duty shock absorbers (when required).

### FIFTH-WHEEL TRAILERING NOTE.

Kingpin weight cannot exceed available payload. Subtract vehicle weight plus passengers and cargo from the GVWR to determine available payload.  C/K1500 model ratings may be limited by insufficient payload for kingpin weight.  A transmission oil cooler is standard on all C/K models equipped with an automatic transmission.  An RPO KC4 engine oil cooler is required on C/K Pickup models with Vortec gasoline engines, and C/K2500 models with Vortec gasoline engines (except the Vortec 7400 V8) and a 3.73 or lower axle ratio. The engine oil cooler is included with the optional Vortec 7400 V8 and optional diesel engines.

### GROSS COMBINATION WEIGHT RATINGS (GCWRs) FOR TRAILERING

*THE USE OF GCWRs TO DETERMINE ENGINE TRANSMISSION AND REAR AXLE RATIO: Perhaps you prefer to use Gross Combination Weight Ratings (GCWRs) to determine the engine and rear axle ratio you will require to tow a specific trailer with your Chevy truck. The chart below shows you the maximum allowable GCWR based on all the available truck engines and rear axle ratios with automatic or manual transmissions. The GCWR includes the total loaded weight of both the truck and the trailer. Any available engine may be used for trailering if the GCWR shown is not exceeded.*

With Automatic Transmission <sup>1</sup>															
GCWR (LBS.)	8500	9500	10,000	10,500	11,000	11,500	12,000	12,500	13,000	13,500	14,500	15,000	17,000	19,000	
ENGINE	REAR AXLE RATIO														
Vortec 4300 V6 Gas	3.08	3.42	3.73	4.10	4.56										
Vortec 5000 V8 Gas		3.08		3.42		3.73		4.10							
Vortec 5700 V8 Gas			3.08		3.42		3.73			4.10			4.56		
Vortec 7400 V8 Gas									3.42			3.73	4.10	4.56	
6.5 Liter Turbo-Diesel V8					3.08		3.42		3.73		4.10				
With Manual Transmission <sup>2</sup>															
GCWR (LBS.)	6500	7000	7500	8000	9000	10,000	11,000	12,000	13,500	15,000	17,000	19,000			
ENGINE	REAR AXLE RATIO														
Vortec 4300 V6 Gas		3.08	3.42	3.73											
Vortec 5000 V8 Gas			3.08		3.42	3.73									
Vortec 5700 V8 Gas						3.08	3.42	3.73	4.10	4.56					
Vortec 7400 V8 Gas									3.42	3.73	4.10	4.56			
6.5 Liter Turbo-Diesel V8						3.08	3.42	3.73	4.10						

<sup>1</sup> To attain GCWR with automatic transmission, an RPO KC4 engine oil cooler is required unless the engine RPO includes an engine oil cooler. <sup>2</sup> To attain GCWR with manual transmission, an RPO KC4 engine oil cooler is required unless the engine RPO includes an engine oil cooler. **NOTE:** Model availability of the above driveline combinations must be verified by your Chevrolet dealer for correct emissions equipment.

The trailering charts on the preceding pages will help you determine which Chevrolet C/K Pickup will best suit your towing requirements. Chevrolet recommends that you specify a 4-speed automatic transmission with overdrive for your truck if you plan to tow.

**NOTE:** Please read the Trailering Caution safety information at right before trailering with your new truck.

### TRAILERING CAUTION.

If you don't use the correct equipment and drive properly, you can lose control of your vehicle when you pull a trailer. For example, if the trailer is too heavy, your vehicle brakes may not work well — if at all. Your vehicle's passengers and you could also be seriously injured. Pull a trailer only after you have taken the following steps.

### TRAILER BRAKES.

If your trailer weighs more than 1000 lbs. loaded, then it must have its own adequate brakes. Be sure to read and follow the instructions for the trailer brake controller so that it is installed, adjusted and maintained properly.

Don't tap into your vehicle's brake system if the trailer's brake system will use more than 0.02 cu. in. of fluid from your vehicle's master cylinder. If it does, neither braking system will work well. You could even lose your vehicle brakes.  The trailer brake parts must be able to take 3000 psi of pressure. If not, the trailer brake system must not be used with your vehicle. If everything checks out this far, have a qualified individual make the brake fluid tap at the port on the master cylinder that sends fluid to the rear brakes. Don't use copper tubing, because it will bend and ultimately break. Use only steel brake tubing.

### HITCHES.

It's important to have the correct hitch equipment. Crosswinds, large trucks going by and rough roads are just a few of the reasons why you'll need the right hitch. Here are some rules to follow:

If you'll be towing a trailer that, when loaded, will weigh more than 4000 lbs., be sure to use a frame-mounted, weight-distributing hitch and sway control of the proper size. This equipment is very important for proper vehicle loading and good handling when you're driving.

If you have to make any holes in the body of your vehicle to install a trailer hitch, be sure to seal the holes if you ever remove the hitch. If they're not sealed, dirt, water and deadly carbon monoxide from the exhaust can get into your vehicle.

**NOTE:** The safety steps described here are, by no means, the only precautions to be taken when trailering. See the owner's manual for the Chevy of your choice for additional guidelines and trailering tips.

### FIFTH-WHEELING.

If you plan to "fifth-wheel" a trailer with a gross weight of up to 13,500 lbs. with your C/K Pickup, please take special note of the following: There are two types of pickup fifth-wheel hitch installations.

The first type of hitch has a fifth wheel on a bar mounted on brackets attached to the frame and the bed of the pickup, and is supported by braces on the fender housings. The kingpin is mounted on the trailer. **(NOTE:** Diagonal bracing is required.)

With hitches of the second type, the kingpin is mounted in the bed of the pickup box and is bolted to the box and the pickup frame, and the fifth wheel is mounted on the trailer. This type of hitch is supplied and installed by the trailer manufacturer.

Fifth-wheel trailers have a greater percentage of their weight on the kingpin (tongue load) than a conventional trailer. Because of this, greater attention must be given to the maximum allowable payload and GVWR. Your Chevy Truck dealer can help you calculate the maximum allowable payload and GVWR required for your fifth-wheel application. The weight of any additional equipment and all passengers other than the driver must be subtracted from the payload weight to determine the maximum kingpin load available.



## TRAILERING WITH YOUR NEW CHEVY PICKUP.

The trailering charts on the preceding pages will help you determine which Chevrolet C/K Pickup will best suit your towing requirements. Chevrolet recommends that you specify a 4-speed automatic transmission with overdrive for your truck if you plan to tow.

**NOTE:** Please read the Trailering Caution safety information at right before trailering with your new truck.

### TRAILERING CAUTION.

If you don't use the correct equipment and drive properly, you can lose control of your vehicle when you pull a trailer. For example, if the trailer is too heavy, your vehicle brakes may not work well — if at all. Your vehicle's passengers and you could also be seriously injured. Pull a trailer only after you have taken the following steps.

### TRAILER BRAKES.

If your trailer weighs more than 1000 lbs. loaded, then it must have its own adequate brakes. Be sure to read and follow the instructions for the trailer brake controller so that it is installed, adjusted and maintained properly.

- Don't tap into your vehicle's brake system if the trailer's brake system will use more than 0.02 cu. in. of fluid from your vehicle's master cylinder. If it does, neither braking system will work well. You could even lose your vehicle brakes.
- The trailer brake parts must be able to take 3000 psi of pressure. If not, the trailer brake system must not be used with your vehicle. If everything checks out this far, have a qualified individual make the brake fluid tap at the port on the master cylinder that sends fluid to the rear brakes. Don't use copper tubing, because it will bend and ultimately break. Use only steel brake tubing.

### HITCHES.

It's important to have the correct hitch equipment. Crosswinds, large trucks going by and rough roads are just a few of the reasons why you'll need the right hitch. Here are some rules to follow:

- If you'll be towing a trailer that, when loaded, will weigh more than 4000 lbs., be sure to use a frame-mounted, weight-distributing hitch and sway control of the proper size. This equipment is very important for proper vehicle loading and good handling when you're driving.

- If you have to make any holes in the body of your vehicle to install a trailer hitch, be sure to seal the holes if you ever remove the hitch. If they're not sealed, dirt, water and deadly carbon monoxide from the exhaust can get into your vehicle.

**NOTE:** The safety steps described here are, by no means, the only precautions to be taken when trailering. See the owner's manual for the Chevy of your choice for additional guidelines and trailering tips.

### FIFTH-WHEELING.

If you plan to "fifth-wheel" a trailer with a gross weight of up to 13,500 lbs. with your C/K Pickup, please take special note of the following: There are two types of pickup fifth-wheel hitch installations.

- The first type of hitch has a fifth wheel on a bar mounted on brackets attached to the frame and the bed of the pickup, and is supported by braces on the fender housings.

The kingpin is mounted on the trailer. (**NOTE:** Diagonal bracing is required.)

- With hitches of the second type, the kingpin is mounted in the bed of the pickup box and is bolted to the box and the pickup frame, and the fifth wheel is mounted on the trailer. This type of hitch is supplied and installed by the trailer manufacturer.

- Fifth-wheel trailers have a greater percentage of their weight on the kingpin (tongue load) than a conventional trailer. Because of this, greater attention must be given to the maximum allowable payload and GVWR. Your Chevy Truck dealer can help you calculate the maximum allowable payload and GVWR required for your fifth-wheel application. The weight of any additional equipment and all passengers other than the driver must be subtracted from the payload weight to determine the maximum kingpin load available.

### GMAC OFFERS YOU THE LITTLE PLEASURES IN LIFE.

With GMAC, financing or leasing your new C/K Pickup can save you time and money. Qualified customers can be approved in about an hour with flexible terms. SMARTLEASE is designed to offer low monthly payments — so you're not tying up cash you could be spending on other important things. For more information about SMARTLEASE, SMARTBUY, or any of the other quality GMAC financing options, see your Chevy dealer or call **1-800-32-SMART (1-800-327-6278)**.



### TURN PLASTIC INTO STEEL WITH THE GM CARD.

The GM MasterCard<sup>®</sup>, with no annual fee, is the revolutionary financial vehicle specifically designed to help put you behind the wheel.



Every time you use it, GM will credit 5% of your purchase toward buying or leasing the GM car or truck of your dreams. It could mean saving hundreds, even thousands of dollars over and above any other discounts or rebates. Please call **1-800-8GM-CARD (1-800-846-2273)** for more information, including annual limits and restrictions.

### THE GM MOBILITY PROGRAM FOR PERSONS WITH DISABILITIES.

We invite your inquiries about the GM Mobility Program For Persons With Disabilities. The program will reimburse you up to \$1000 for any adaptive equipment you may require for your 1996 Chevy C/K Pickup, and can set up complete GMAC financing for you, too. The program can also provide you with a listing of area driver assessment centers and mobility equipment installers. See your Chevy dealer for more details or call this toll-free number for more information: **1-800-323-9935**. Text telephone (TTY) users, call **1-800-833-9935**.

## SOME THINGS YOU SHOULD KNOW ...

### ABOUT 1996 C/K PICKUP AVAILABILITY.

The trucks featured in this brochure are scheduled to be available in late fall 1995.

### ABOUT 1996 CHEVY TRUCK BROCHURE AVAILABILITY.

Your Chevrolet dealer will be pleased to provide additional brochures covering other Chevy Truck model lines, including S-Series Pickup, Tahoe, Suburban, Blazer, Lumina Minivan, Astro Van and Chevy full-size vans. To review models designed specifically for hard work in business and industry, request a *1996 Chevrolet Commercial Trucks* brochure. Also, please feel free to call **1-800-950-2438** for additional 1996 Chevy truck brochures, for answers to any product questions you may have, or to determine the location of your nearest Chevy dealer.

### ABOUT UPDATED SERVICE INFORMATION.

Chevrolet regularly sends its dealers useful service bulletins about Chevrolet products. Chevrolet monitors product performance in the field. We then prepare bulletins for servicing our products better. You can get these bulletins, too. Ask your dealer or, to get ordering information, call toll free: **1-800-551-4123**.

### ABOUT ASSEMBLY.

Chevrolet trucks incorporate thousands of components produced by different operating units of GM, its subsidiaries or suppliers to GM worldwide. We sometimes find it necessary to produce Chevrolet trucks with different or differently sourced components than originally scheduled. All such components have been approved for use in Chevrolet trucks and will provide the quality of performance associated with the Chevrolet name. Since some options may be unavailable when your vehicle is assembled, we suggest that you verify that your vehicle includes the equipment you ordered or, if there are changes, that they are acceptable to you.

### ABOUT ENGINES.

Chevrolet trucks are equipped with engines produced by different operating units of GM or its subsidiaries or suppliers to GM.

### ABOUT CORROSION PROTECTION.

Chevrolet trucks are designed and built to resist corrosion. All body sheet-metal components are warranted against through corrosion for 6 years/100,000 miles. Application of additional rust-inhibiting materials is not required under the corrosion coverage and none is recommended.

### ABOUT THIS BROCHURE.

We have tried to make this brochure as comprehensive and factual as possible. We reserve the right, however, to make changes, without notice, in prices, colors, equipment, specifications, model availability. Since some information may have been updated since the time of printing, please check with your Chevrolet dealer for complete details.

**NOTE:** Product comparisons published in this brochure exclude other General Motors products, except as noted. Some vehicles may be shown with optional equipment.

Chevrolet, the Chevrolet Emblem, General Motors, GM, the GM Logo, Blazer, Suburban, Tahoe, Lumina, Astro, Insta-Trac and Solaray are trademarks of the General Motors Corporation. Chevy, Volt, and the Chevy Bowtie are registered trademarks of the General Motors Corporation. GMAC, SmartLease, and SmartBuy are registered trademarks of the General Motors Acceptance Corporation. Scotchgard is a trademark of the 3M Corporation. ©1995 GM. All rights reserved.

Litho in U.S.A.





## WHEELS AND WHEEL TRIM.

**STEEL WHEEL.**  
15" (2WD) or 16" (4x4). Standard with Cheyenne. Silver-painted with black center cap. (4x4 wheel shown.)



**2WD 15" CAST-ALUMINUM WHEEL.**  
Optional for C1500 models only. Included with optional Sport Package for C1500 Regular Cab.<sup>1</sup>

**STEEL WHEEL WITH RALLY TRIM.**  
15" (2WD) or 16" (4x4). Included with Silverado, optional for Cheyenne. Silver-painted with bright trim ring and center cap. (4x4 wheel shown.)



**4x4 16" CAST-ALUMINUM WHEEL.**  
Optional for K1500 models only. Included with optional Sport Package for K1500 Regular Cab.<sup>1</sup>

**2WD 15" CHROME-PLATED STEEL WHEEL.**  
Optional for C1500 Cheyenne and Silverado models only.<sup>2</sup>



**CK3500 SERIES 16" STEEL WHEEL.**  
Standard on CK3500 Series models when equipped with dual rear wheels. Argent-painted with bright and black center cap.

<sup>1</sup> Also available with RPO BYP Sport Package, as a substitution for cast aluminum wheels. <sup>2</sup> Not available with RPO X81 W/T1500 Work Truck Package.

## PREFERRED EQUIPMENT GROUPS

These convenient option packages help make it easy to tailor a new GM Pickup to your specifications.

Trim Level	Cheyenne	Silverado
<b>PREFERRED EQUIPMENT GROUP</b>	ISA	ISB ISC
Cheyenne Trim	■	
Silverado Trim	■	■
Air conditioning	■	■
Radio: ETR AM/FM stereo with cassette tape player	■	■
Tilt-Wheel™ Adjustable Steering Column and electronic speed control with Resume Speed	■	■
Bench seat with Custom Leather seating surfaces (Regular Cab)	■	
Front 60/40 split-bench seat with Custom Leather seating surfaces (Extended-Cab)	■	
Electrochromic/auto-dimming rearview mirror with integral 8-point compass	■	
Power driver seat, 6-way	■	
Remote Keyless Entry	■	

■ Included in Preferred Equipment Group. <sup>1</sup> Sound system upgrade allowed. <sup>2</sup> May upgrade to 60/40 split-bench seat with Custom Leather seating surfaces. <sup>3</sup> May upgrade to front high-back bucket seats with Custom Leather seating surfaces. <sup>4</sup> Extended Cab only, not available with Regular Cab.

## SPECIAL PACKAGES

**W/T1500 WORK TRUCK PACKAGE (RPO X81)**  
Includes Fleetside Short Box (Headside Long-Box optional), base interior with vinyl bench seat and headliner and W/T1 tailgate decal. Air conditioning optional—additional option availability is limited. Please see your Chevy Truck dealer for details. W/T1500 Work Truck Package available only on CK1500 Regular Cab and requires standard Vortec 4300 V6 engine. For heavier-duty commercial applications, ask your dealer about available CK2500 and CK3500 Commercial Truck Packages.

**SPORT PACKAGE (RPO BYP)<sup>1</sup>**  
Includes body-color front and rear bumpers, grille and outside rearview mirrors, fog lamps (C1500 2WD) or tow hooks (K1500 4x4), blackwall tires (P235/75R15 on C1500 2WD or P265/75R16 all-terrain on K1500 4x4), cast-aluminum wheels (may substitute chromed steel wheels on C1500) and CHEVROLET tailgate decal. Available in Onyx Black, Victory Red and Summit White. Available on CK1500 Regular Cab with SportsBox only; requires Silverado Preferred Equipment Group 1SB.

**Z71 OFF-ROAD CHASSIS PACKAGE (RPO Z71)**  
Includes skid plate package, Bilstein high-pressure gas-charged shocks and "Z71" graphics (replacing "4x4" graphics); requires P265/75R16 blackwall or white outline-lettered all-terrain tires. Available K1500 4x4 only.

**SNOW PLOW PREP PACKAGE (RPO YVU)**  
Includes heavy-duty front springs and heavy-duty shock absorbers (except when RPO Z71 Off-Road Package is also ordered), forward wiring harness and power steering cooler. (K-Series 4x4s only; requires Vortec gasoline engine with optional engine oil cooler and automatic transmission.) (Not available on Crew-Cab.)

## MARKETING PACKAGES

**CONVENIENCE PACKAGE (CHEYENNE)**  
Includes air conditioning, Tilt-Wheel™ Adjustable Steering Column, electronic speed control with Resume Speed and AM/FM stereo with cassette tape player. Requires Cheyenne Preferred Equipment Group 1SA.

**BRIGHT APPEARANCE PACKAGE (CHEYENNE)**  
Includes bright grille, chromed front and rear step-bumper, body-side moldings and Rally Wheel trim. Requires Cheyenne Preferred Equipment Group 1SA.

<sup>1</sup> Not available with RPO BYP Snow Plow Prep Package or front heavy-duty springs. <sup>2</sup> Z71 graphics not included when RPO BYP Sport Package is also ordered. <sup>3</sup> May upgrade wheels on CK1500 models only.

## STANDARD AND OPTIONAL FEATURES

**NOTE:** A complete list of safety features appear on page 21. Some individually available options listed below may be included in, or be ordered only with, specific Preferred Equipment Group, Special Packages or Marketing Packages. Some additional ordering restrictions may apply. Please see your salesperson for details.

Trim Level	Cheyenne	Silverado
<b>SEATING: REGULAR-CAB &amp; CREW-CAB</b>		
Full bench seat — trimmed in Vinyl	S	O <sup>1</sup>
— trimmed in Cloth	O <sup>1</sup>	—
Full bench seat with center storage armrest with map net, coin holder and writing surface — trimmed in Custom Cloth	—	S
— with Custom Leather seating surfaces	—	O <sup>1</sup>
60/40 split-bench reclining seat with center storage armrest with map net, coin holder and writing surface — trimmed in Custom Cloth	—	O
— with Custom Leather seating surfaces	—	O <sup>4</sup>
High-back reclining bucket seats with multi-feature center console — trimmed in Custom Cloth	—	O
Seat adjustment, power lumbar; driver and front passenger	—	S <sup>5</sup>

### SEATING — EXTENDED-CAB

60/40 split-bench front seat — trimmed in Vinyl	S	O <sup>1</sup>
— trimmed in Cloth	O <sup>1</sup>	—
60/40 split-bench reclining front seat with center storage armrest with map net, coin holder and writing surface — trimmed in Custom Cloth	—	S
— with Custom Leather seating surfaces	—	O <sup>4</sup>
High-back reclining bucket front seats with multi-feature center console — trimmed in Custom Cloth	—	O
— with Custom Leather seating surfaces	—	O <sup>4</sup>
Seat, driver: power 6-way	—	O <sup>7</sup>
Seat adjustment, power lumbar; driver and front passenger	—	S <sup>5</sup>

### INTERIOR FEATURES

Air bag, driver <sup>8</sup>	S	S
Air conditioning (non-ozone-depleting R134a refrigerant)	O	S <sup>9</sup>
Assist handles, passenger	S	S

Trim Level	Cheyenne	Silverado
------------	----------	-----------

### INTERIOR FEATURES (CONTINUED)

Convenience Group: power windows and power door locks	—	S
Convenience Group: Tilt Wheel™ Adjustable Steering Column and electronic speed control with Resume Speed	O	S <sup>9</sup>
Door trim panels: color-keyed vinyl with padded armrests, map pockets and red reflectors (with door metal areas painted exterior color)	S	—
Door trim panels: color-keyed vinyl with cloth inserts, molded armrests, carpeted lower areas with map pockets and lighted red/white reflectors	—	S
Floor carpeting: color-keyed	O <sup>10,11</sup>	S
Floor covering, vinyl: color-keyed (substitute for carpeting)	S <sup>12</sup>	O <sup>13</sup>
Floor mats: front (and rear with Extended Cab and Crew Cab) vinyl; removable, color-keyed (requires floor carpeting)	O <sup>14</sup>	S
Glass: Solar-Ray light-tinted, all windows	S	S
Glass: Solar-Ray deep-tinted quarter windows (Extended-Cab) or rear-door windows (Crew-Cab) and rear window <sup>15</sup>	O	O
Headliner, full-length: color-keyed cloth	S <sup>15</sup>	S
Head restraints: front (and rear outer-seating positions in Extended-Cab and Crew Cab)	S	S
Jack, mechanical: with wheel wrench	S	S
Lighting: dome light with door-actuated switches and delayed entry feature, reading light, glove box light, underhood and cargo-area lights	S	S
Locking system: Remote Keyless Entry	—	O <sup>7</sup>
Locking system: single two-sided key operation of ignition system and door locks	S	S
Power door locks	O <sup>16</sup>	S <sup>16</sup>
Rear-window defogger (not available on Regular-Cab models)	—	O <sup>7</sup>

Trim Level	Cheyenne	Silverado
------------	----------	-----------

### INTERIOR FEATURES (CONTINUED)

Scotchgard™ Protector: on cloth and carpeted surfaces <sup>17</sup>	S	S
Sunshades, cloth-covered: with LH storage strap and RH vanity mirror	S	S <sup>17</sup>
Storage tray: full-width, behind seat (except Extended-Cab)	—	S
Sound insulation: additional to standard	—	S
Window, sliding rear <sup>20</sup>	O	O
Windows, swing-out quarter (Extended-Cab only)	S	S
<b>INSTRUMENT PANEL/CONTROLS</b>		
Cigarette lighter with lighted ashtray	S	S
Cup holders: 2 pop-out in dash, plus 2 cup detents in passenger-side upper-panel utility tray	S	S
Electric shift, push-button: 4x4 transfer case (K1500/2500 only; requires automatic transmission)	O	O
Heater and defroster: deluxe with side window defoggers	S	S
Heat ducts, rear-seat (Crew-Cab only)	S	S
Gauges, analog type: include speedometer, tachometer, trip odometer, fuel level, voltmeter, coolant temperature and oil pressure	S	S
Glove box: bin-type, with light	S	S
Mirror, inside rearview: auto-dimming electrochromic with integral 8-point electronic compass	—	O <sup>7</sup>
Power outlets, auxiliary electric: two (covered)	S	S
Steering wheel: 4-spoke graphite-color, simulated leather; includes full-floating center pad horn-blow feature	S	—
Steering wheel: 4-spoke graphite-color, leather-wrapped; includes full-floating center pad horn-blow feature	—	S
Utility tray (with 2 cup detents)	S	S
Warning buzzer: key-in-ignition	S	S

Trim Level	Cheyenne	Silverado
------------	----------	-----------

### SOUND SYSTEMS BY DELCO ELECTRONICS

**NOTE:** All GM Pickup sound systems include a Delco Electronics 1.7R electronically tuned AM/FM receiver with seek, scan and digital clock. Four stereo speakers are standard. Silverado optional upgrade sound systems include a 6-speaker Enhanced Performance Speaker System.

ETR AM/FM stereo	S	—
ETR AM/FM stereo with preset scan and cassette tape player with auto-reverse	O	S <sup>9</sup>
ETR AM/FM stereo with cassette tape player; includes Automatic Tone Control, Speed-Compensated Volume, preset scan, CD in-play/radio switching and TheftLock feature	—	O

ETR AM/FM stereo with compact disc player; includes Automatic Tone Control, Speed-Compensated Volume, preset scan, CD Random Select, CD-in-play/radio switching and TheftLock feature	—	O
---	---	---

ETR AM/FM stereo with cassette tape player and compact disc player; includes Automatic Tone Control, Speed-Compensated Volume, bi-directional seek, preset scan, CD Random Select, CD- or cassette tape-in-play/radio switching and TheftLock feature	—	O
---	---	---

### EXTERIOR FEATURES

Air dam, dark argent <sup>21</sup>	S	S
Appearance Package: bright grille, composite halogen headlamps and dual horns	O	—
Bedliner, under-rail (see "A Note About Bedliners" at end of chart) <sup>22</sup>	O	O
Bumper, chromed front <sup>23</sup>	S	—
Bumpers, chromed front with black rub strip and rear step with step pad <sup>24</sup>	O <sup>18</sup>	S <sup>24</sup>
Bumper, painted rear step	O	—
Daytime Running Lamps, automatic (Extended-Cab only)	—	O <sup>25</sup>
Grille, bright deluxe: with dual composite halogen headlamps	O <sup>18,26</sup>	S <sup>27</sup>
Grille, argent-painted molded Duragrille: with single rectangular halogen sealed-beam headlamps	S	—
Lamps, roof-marker <sup>28</sup>	O	O

Trim Level	Cheyenne	Silverado
------------	----------	-----------

### EXTERIOR FEATURES (CONTINUED)

Mirrors, below-eyeline: fold-away, black, RH and LH	S	—
Mirrors, power below-eyeline: fold-away, black, RH and LH	—	S
Mirrors, camper-type: stainless-steel	O <sup>19</sup>	O
Moldings, body-side: black with bright trim and bright wheel-opening moldings <sup>29</sup>	O	S
Tailgate, removable	S	S
Wipers, windshield: with washers and intermittent feature	S	S

### CHASSIS FEATURES

Air cleaner, high-capacity <sup>30</sup>	O	O
Battery, heavy-duty: 600 CCA	S	S
Battery, auxiliary heavy-duty: 600 CCA <sup>31</sup>	O <sup>19</sup>	O
Brake system, power-assisted: front disc/rear drum with 4-wheel ABS	S	S
Cold Climate Package: includes engine block heater <sup>32</sup>	O	O
Cooler, engine oil <sup>33</sup>	O	O
Cooler, transmission: heavy-duty auxiliary <sup>34</sup>	O	O

Chassis equipment, heavy-duty — 6600-lb. GVWR (K1500 4x4 Extended-Cab only; included with optional diesel engine) <sup>35</sup>	O	O
Differential, locking rear	O	O
Exhaust system: aluminum stainless steel	S	S
Horn, single-note	S	—
Horn, dual-note	—	S
Skid plates: front differential and transfer case shields (4x4 models only) <sup>36</sup>	O	O
Shock absorbers, heavy-duty front/rear <sup>37</sup>	O	O
Shock absorbers, 46-mm Bilstein front and rear	O	O
Springs, heavy-duty front (K1500 only) <sup>38</sup>	O	O
Steering, power-assisted: variable-ratio	S	S
Tie-downs, cargo: 4	S	S

Trim Level	Cheyenne	Silverado
------------	----------	-----------

### CHASSIS FEATURES (CONTINUED)

Tires: please see your Chevrolet dealer for availability		
Tire, spwc: full-size, on steel wheel (mounted under rear frame on vinch-type carrier)	S	S
Tow hooks: 2 front (standard on 4x4 models)	O	O <sup>19</sup>
Trailer provisions: 7-wire trailer wiring harness	S	S
Trailer special equipment: heavy-duty; includes platform trailer hitch <sup>31</sup>	O	O
Transfer case (4x4 model only)	S	S
Underhood storage box, covered <sup>40</sup>	S	S

S — Standard, O — Optional.

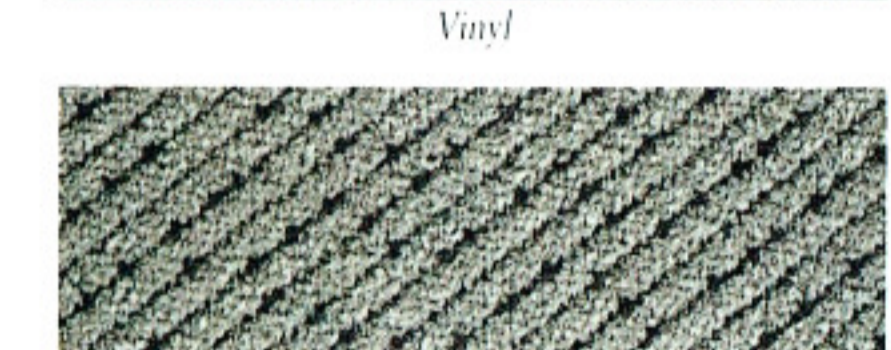
<sup>1</sup> No cost substitution for standard trim. <sup>2</sup> Not available on Cheyenne Crew-Cab models. <sup>3</sup> Included in Silverado Preferred Equipment Group 1SC; may upgrade to 60/40 split-bench reclining seat with center fold-down armrest and Custom Leather seating surfaces. <sup>4</sup> Requires Silverado trim level. <sup>5</sup> Not included when vinyl seat trim is selected. <sup>6</sup> Included in Silverado Preferred Equipment Group 1SC; may upgrade to front high-back reclining bucket seats with Custom Leather seating surfaces. <sup>7</sup> Included in Silverado Preferred Equipment Group 1SC. <sup>8</sup> With GVWRs under 3000 lbs. only. <sup>9</sup> Included in Silverado Preferred Equipment Groups 1SB and 1SC. <sup>10</sup> Except with W/T1500 Work Truck Package. <sup>11</sup> Not available with Crew Cab. <sup>12</sup> Black vinyl floor covering with W/T1500 Work Truck trim. <sup>13</sup> Replaces carpet and mats; not available with RPO BYP Sport Package. <sup>14</sup> Not available with Regular Cab; includes light-foam rear window with optional rear window defogger or sliding rear window. <sup>15</sup> Vinyl with W/T1500 Work Truck. <sup>16</sup> Included in Silverado Standard Convenience Group. <sup>17</sup> Not available with optional sliding rear window. <sup>18</sup> Except with vinyl floor covering and vinyl seat and interior trim. <sup>19</sup> RH and LH illuminated vanity mirrors with extenders on Crew-Cab models. <sup>20</sup> Not available on Extended Cab with rear window defogger. <sup>21</sup> Except CK3500 with GVW of 8000 lbs. or above and 5500 Series models. <sup>22</sup> Requires Fleetside box. <sup>23</sup> Includes front bumper guards with optional diesel engine only. <sup>24</sup> Body-color trim with RPO BYP Sport Package. <sup>25</sup> CK1500 Extended Cab only; requires Vortec 5000 or Vortec 5700 V8 engine and automatic transmission; not available with RPO Z71 4x4 Deluxe Two-Tone. <sup>26</sup> Included with Bright Appearance Marketing Package and RPO Z71 Appearance Package. <sup>27</sup> Only color grade with RPO Sport Package. <sup>28</sup> Not available with CK1500 models; included with optional dual rear wheels (RPO R60). <sup>29</sup> Except on K-Series 4x4 models with RPO CDP GVWR, dual rear wheels or 4x4 CK3500 models. <sup>30</sup> Requires Vortec gasoline engine. <sup>31</sup> Not available with RPO BYP Sport Package; standard with 6.5 Liter Turbo Diesel V8 engine. <sup>32</sup> Not available with optional diesel engine. <sup>33</sup> Please see your Chevy Truck dealer for availability and restrictions. <sup>34</sup> Requires RPO 1CS, 6600-lb. GVWR. <sup>35</sup> Included with RPO Z71 Off-Road Chassis Package. <sup>36</sup> Included with RPO Z6C Trailering Special Equipment and RPO VPO Snow Plow Prep Package. <sup>37</sup> Not available with 4x4 or on Extended Cab with optional heavy-duty trailering special equipment. <sup>38</sup> Not available with RPO Z71 Off-Road Package or optional diesel engine. <sup>39</sup> Not available with RPO BYP Sport Package. <sup>40</sup> Not available on CK Pickup models with optional auxiliary heavy-duty battery or with optional diesel engine.

**A NOTE ABOUT TIRE CHAINS:** Tire chains should not be used on models equipped with P265/75R16 tires, or on any models equipped with dual rear wheels and fuses, because they could cause damage to these vehicles. The GM tire chains indicated reflect only a portion of the total content of each trim level. See your dealer for complete listings.

**A NOTE ABOUT BEDLINERS:** Aftermarket manufacturers offer many products — such as slide-in campers and camper shells — that are designed to fit pickup trucks. However, such products built prior to the 1988 model year may not fit on the beds of our 1988 or newer Chevy CK Pickups. Please confirm the compatibility of any aftermarket product you intend to install on your new GM by consulting with the product manufacturer or by checking the cargo box dimensions that are provided on page 29.

## INTERIOR TRIMS/EXTERIOR COLORS.

### INTERIOR TRIMS.



### EXTERIOR COLORS.

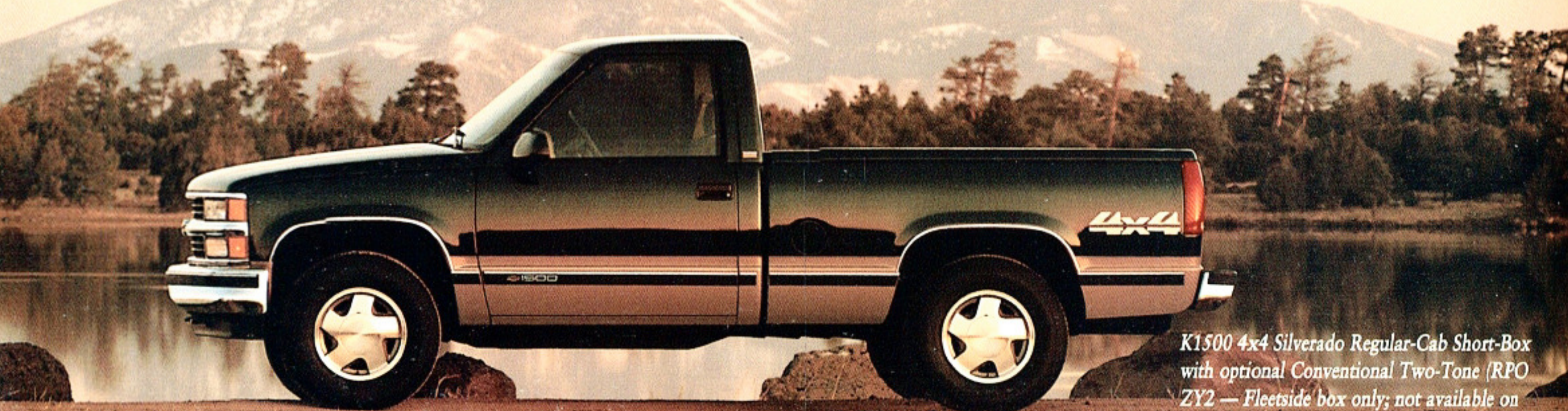
**NOTE:** All trims shown above are available in the interior colors indicated below. Seat types and material availability are shown at the beginning of the Standards and Options chart at left. Interior color availability: ■ Neutral ■ Blue ■ Gray ■ Red



**NOTE:** Please see your Chevy Truck dealer for optional Two-Tone exterior color combination availability and latest interior trim and exterior color availability information.



K1500 4x4 Silverado Regular-Cab Short-Box with optional Deluxe Two-Tone (RPO ZY4 — Fleetside box only; not available on Crew-Cab) shown in Emerald Green Metallic and Light Autumnwood Metallic.



K1500 4x4 Silverado Regular-Cab Short-Box with optional Conventional Two-Tone (RPO ZY2 — Fleetside box only; not available on Crew-Cab) shown in Emerald Green Metallic and Light Autumnwood Metallic.





36 USC320

**PROUD SPONSOR OF THE  
1996 U.S. OLYMPIC TEAM**



**CHEVY TRUCKS**