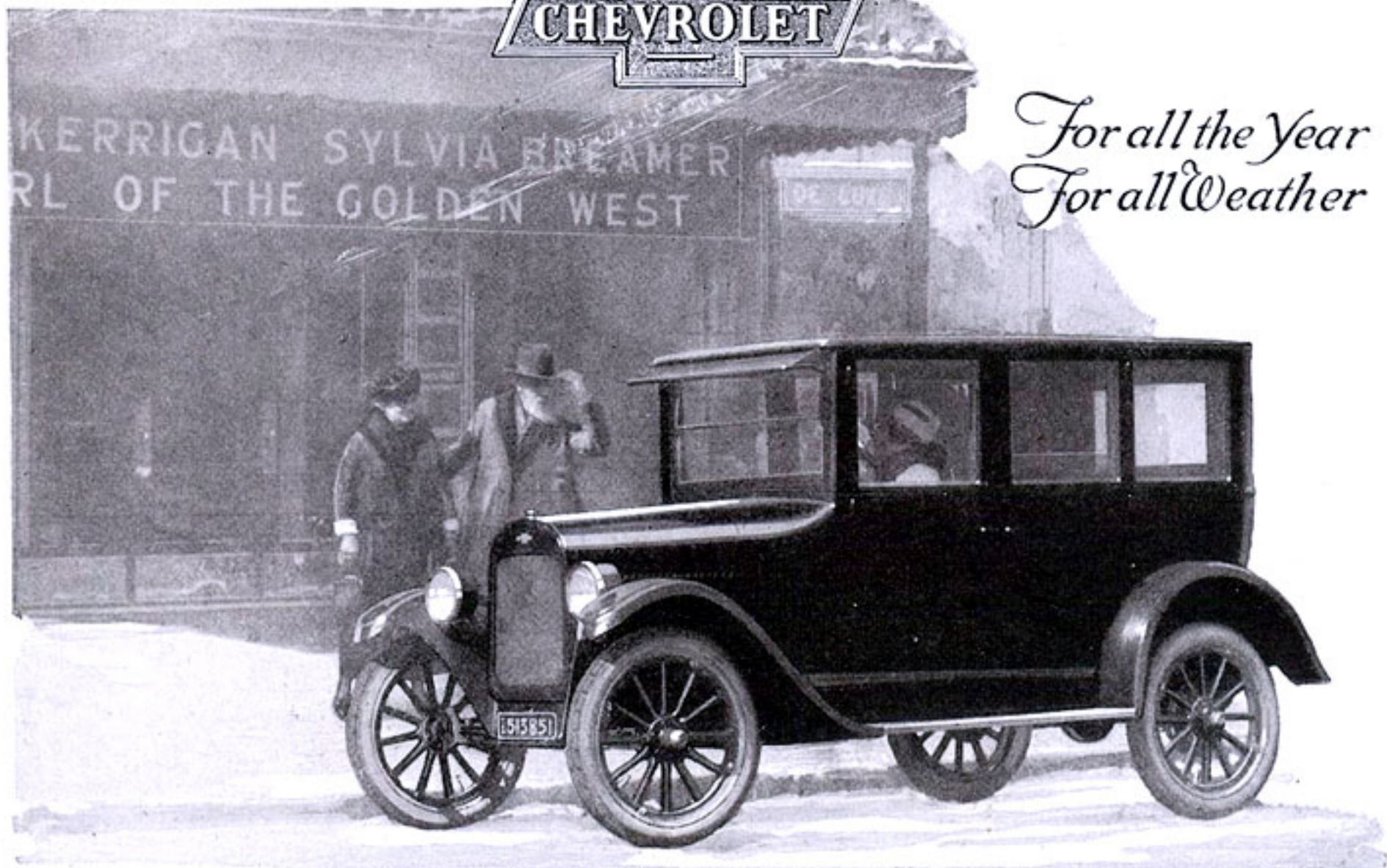


for Economical Transportation



*For all the Year
For all Weather*

Superior Sedan \$795

f. o. b. Flint, Mich.

Prices f. o. b. Flint, Mich.

Superior Roadster	-	\$490
Superior Touring	-	495
Superior Utility Coupe	-	640
Superior 4-Passenger Coupe	- -	725
Superior Sedan	- -	795
Superior Commercial Chassis	- -	395
Superior Light Delivery Utility Express Truck Chassis	- -	495 550

The Lowest Priced, High Grade All-Year Sedan

The Superior Chevrolet Sedan is distinctly high-grade in appearance and workmanship. It is so economical to operate and maintain that it is feasible for either one passenger's daily use, or for the evening and Sunday requirements of the average family of five.

Recent improvements have added further to its remarkable dollar value. Larger brakes give increased ease and safety of driving. The front axle has been straightened and raised $1\frac{1}{2}$ inches to take care of deeply rutted or sandy roads. The improved springs are of chrome-vanadium steel, yielding increased riding comfort.

These and other less important changes have been made in line with our constant aim to maintain quality leadership in economical transportation.

Chevrolet Motor Company, Detroit, Michigan

Division of General Motors Corporation

Five United States manufacturing plants, seven assembly plants and two Canadian plants give us the largest production capacity in the world for high-grade cars and make possible our low prices.

Chevrolet Dealers and Service Stations everywhere. Applications will be considered from high-grade dealers only, for territory not adequately covered.

for Economical Transportation



Fits the Finest Homes or Most Modest Incomes

Consider the evident high quality of this all-year family car, and its remarkable price—then you can understand why it has been necessary for us to double production facilities this year.

Many families already owning the highest priced cars, also own a Chevrolet Sedan or Coupé. They find it not only consistent in style and general quality with their social position, but also astonishingly economical to operate. Those of more limited means take justifi-

able pride in the ownership of this distinguished car, which is nevertheless so easy to buy and maintain.

Thousands of pleased owners will tell you a Chevrolet offers the best dollar value of any car made.

Your own requirements for economical transportation will determine your choice of models.

Any Chevrolet dealer will explain their many points of superiority.

Chevrolet Motor Company, Detroit, Mich. *Division of General Motors Corporation*

Chevrolet Dealers and Service Stations everywhere. Applications will be considered from high-grade dealers only, for territory not adequately covered.

Five United States manufacturing plants, seven assembly plants and two Canadian plants give us the largest production capacity in the world for high-grade cars and make possible our low prices.

Prices f. o. b. Flint, Michigan

Superior Roadster . . .	\$490	<i>Commercial Cars</i>
Superior Touring . . .	495	Superior Commercial Chassis
Superior Utility Coupe . . .	640	Superior Light Delivery . . .
Superior Sedan . . .	795	Utility Express Truck Chassis
		550

Superior
Utility Coupé

\$ 640

f. o. b. Flint, Mich.

