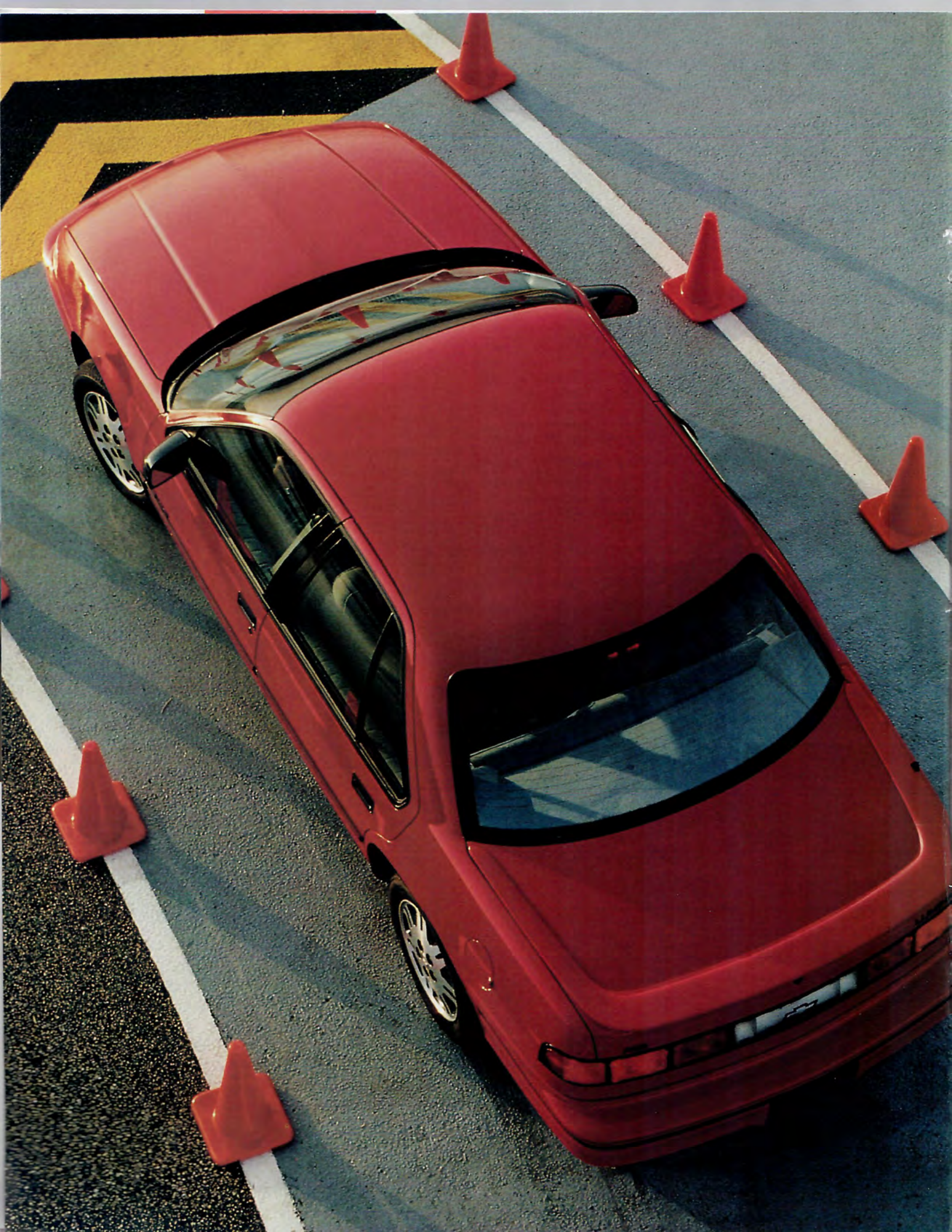


1 9 9 3



C H E V R O L E T







# TODAY'S CHEVROLET.

ABS — A MAJOR CHEVROLET  
SAFETY ADVANTAGE.

You'll feel more confident behind the wheel of a 1993 Chevrolet. An advanced four-wheel anti-lock brake system (ABS) is standard in every 1993 Chevrolet Caprice, Lumina Euro and Z34, Corsica, Beretta, Cavalier, Camaro, Corvette and Lumina APV. It is optional in the base Lumina Sedan and Coupe.

This accident-avoidance system enhances the driver's ability to steer around objects during hard braking and provides shorter stopping distances in many circumstances.

Here's how it works:

- When you brake hard and hold the pedal down in a 1993 Chevrolet with ABS, a wheel-speed sensor will monitor slippage that occurs between each tire and the road surfaces.
- When the wheel-speed sensors detect impending lockup in hard braking, the ABS is activated. It automatically "pumps" the brakes separately at each wheel as required — applying and releasing brake pressure at a rate even most professional drivers cannot duplicate.
- The automatic adjustments to brake pressure at each wheel minimize wheel lockup, and help maintain tire-to-road traction and the ability to steer.

ABS is an outstanding safety feature that will be available in all cars someday. But why wait for someday? You can have ABS right now in any '93 Chevy car or minivan, even the lowest-priced Cavalier.

What else would you expect from The Heartbeat of America?

## AIR BAGS

A driver-side air bag is standard in the 1993 Caprice, Corsica, Beretta and Corvette. Driver- and passenger-side air bags are standard in the 1993 Camaro. Always wear safety belts, even with air bags.



## SAFETY-CAGE CONSTRUCTION

A rugged steel safety cage surrounds the passenger compartment in every 1993 Chevrolet car (except convertibles) and minivans.



## ADVANCED ENGINE TECHNOLOGY

Choose from one of the industry's largest selections of advanced-technology four-cylinder, V6 and V8 engines. For ease of maintenance, all Chevrolet engines feature ignition systems that never need adjustment.



## TWO-SIDE-GALVANIZED STEEL

The extensive use of two-side-galvanized steel in most 1993 Chevrolets provides excellent protection against rust. The zinc coating actually eliminates surface rust on the outside due to minor scratches and chips.



## SCOTCHGARD™ FABRIC PROTECTOR

Even Chevrolet interior fabrics are designed to stay new-looking longer. For added durability, Scotchgard™ Fabric Protector helps protect the cloth seats, door panels and, in most models, floor carpeting.



## 3/36 BUMPER TO BUMPER WARRANTY

Every 1993 Chevrolet is protected by GM's excellent 3-year/36,000-mile Bumper to Bumper Plus, non-deductible, limited warranty. Please see your dealer for terms of this limited warranty.



## ROADSIDE ASSISTANCE

The security of round-the-clock roadside assistance is now available to every Chevrolet owner via a toll-free hot line. Please ask your Chevrolet dealer for more details.



## OVER 4500 DEALERS

At your service: the largest dealer network in the United States, more than 4500 Chevrolet dealers from coast to coast.





**1993 CAMARO.  
THE NEW GENERATION  
OF AN AMERICAN CLASSIC.**

Camaro. The name alone conjures up images of taut, purposeful design, agile handling, and remarkably responsive power.

Now a new generation of this American classic makes its entrance. The 1993 Camaro features the very latest in technology, safety and, of course, quality. But look closely, because this new Camaro is much more than that.

Study its beautifully executed lines. Experience its world-class technology, performance and precision. And relive how it feels to really love your car, and to drive for the sheer thrill of it.

The new Camaro. The magic is still there.







### **TWO EXCITING MODELS**

Camaro Coupe.  
Camaro Z28 Coupe.

### **3.4 LITER V6**

A new 160-HP 3.4 Liter V6 with Sequential-Port Fuel Injection is standard in Camaro Coupe.

### **5.7 LITER V8**

The 280-HP LT1 V8 is standard in Camaro Z28. The Z28 also features a 6-speed manual transmission.

### **DUAL AIR BAGS**

Driver- and passenger-side air bags are standard in the 1993 Camaro. Always wear safety belts, even with air bags.

### **FOUR-WHEEL ANTI-LOCK BRAKES**

A four-wheel anti-lock brake system (ABS) is a new standard safety feature in every Camaro.

### **1993 CAMARO BROCHURE**

A brochure on the exciting, all-new 1993 Camaro is available at your Chevy dealer.



# Cavalier



Cavalier RS Convertible. A power top with a glass rear window is standard.



Cavalier Z24 Coupe. The Z24 features a 140-HP, 3.1 Liter V6 with Multi-Port Fuel Injection.



Cavalier RS Wagon (at left), Cavalier VL Wagon (at right).





If you're looking for a sporty, fun-to-drive small car with a proven track record and the standard safety of ABS, look to Cavalier for 1993.

The style of Cavalier reflects the designed-in excellence of this easy-to-buy, easy-to-own Chevrolet. From the solidly built doors (with integral

side-guard door beams) to the rugged front and rear bumpers, Cavalier wraps quality around its occupants.

Choose from a wide selection of Cavalier models, including coupes, sedans, wagons, convertibles and the sport-styled, V6-powered Z24.

**Cavalier RS Coupe.** A four-wheel anti-lock brake system (ABS) is standard in every 1993 Cavalier.



**Cavalier RS Sedan.** This roomy sedan seats five passengers comfortably.



**CAVALIER MODELS**

VL Coupe	RS Coupe	RS Convertible
VL Sedan	RS Sedan	Z24 Coupe
VL Wagon	RS Wagon	Z24 Convertible

**ENGINES**

- 2.2 Liter L4 with Multi-Port Fuel Injection (standard on Cavalier VL and Cavalier RS).
- 3.1 Liter V6 with Multi-Port Fuel Injection (standard on Cavalier Z24 and optional on Cavalier RS).

**TRANSMISSIONS**

- 5-spd. manual (standard on Coupes, Sedans and Convertibles).
- 3-spd. automatic (standard on Wagons; optional on Coupes, Sedans and Convertibles).

**BRAKES**

Power front disc/rear drum with four-wheel anti-lock brake system (ABS).

<b>DIMENSIONS (IN.)</b>	<b>COUPE/ CONV.</b>	<b>SEDAN</b>	<b>WAGON</b>
Wheelbase	101.3	101.3	101.3
Overall length	182.3	182.3	181.1
Overall width	66.3	66.3	66.3
Luggage capacity (cu. ft.)	13.2*	13.0	63.6†
Fuel tank capacity (gal.)	15.2	15.2	15.2

\*10.7 on Convertible. †With rear seat down.





Beretta GT Coupe.



Features of the High Output Quad 4 include four valves per cylinder and a dual overhead camshaft design for excellent response through a wide RPM range. Horsepower is 175 at 6200 RPM.

The sculptured design of Beretta makes beautiful sense. As does the outstanding value you'll discover in every 1993 Beretta.

Beretta Coupe seats five people. It has front-wheel drive, all-season radial tires, and a four-wheel anti-lock brake system (ABS). A driver-side air bag is standard.\* The 2.2 Liter four-cylinder engine features Multi-Port Fuel Injection, as does the optional 3.1 Liter V6.

Beretta GT offers even sportier style, with special exterior trim and graphics, 15" aluminum cross-lace wheels, and a sport suspension with "Quiet Ride" Touring tires.

Beretta GTZ is for driving enthusiasts. Equipment includes a High-Output Quad 4 engine, slick-shifting 5-speed manual transmission, Performance Handling Package, and sport bucket seats with driver's inflatable lumbar support.

\*Always wear safety belts, even with air bags.

Beretta's beauty  
gets your attention.

Beretta's  
performance  
keeps it.



# Beretta



Beretta Coupe.



Beretta GTZ Coupe.

## BERETTA MODELS

Coupe	GT Coupe	GTZ Coupe
-------	----------	-----------

### ENGINES

- 2.2 Liter L4 with Multi-Port Fuel Injection (standard on Beretta Coupe and Beretta GT Coupe).
- 3.1 Liter V6 with Multi-Port Fuel Injection (optional on Beretta Coupe, Beretta GT Coupe and Beretta GTZ Coupe).
- 2.3 Liter High Output Quad 4 with Multi-Port Fuel Injection (standard on Beretta GTZ Coupe only).

### TRANSMISSIONS

- 5-spd. manual (standard on all models).
- 3-spd. automatic (optional on all models; not available with Quad 4 engine).

### BRAKES

Power front disc/rear drum with four-wheel anti-lock brake system (ABS).

### DIMENSIONS (IN.)

### ALL MODELS

Wheelbase	103.4
Overall length	187.3
Overall width	67.9
Luggage capacity (cu. ft.)	13.5
Fuel tank capacity (gal.)	15.2





# C O R S I C A L T

The secret of Corsica LT's success? This dependable family sedan offers the room and safety features of a 5-passenger family car ... at a small-car price.

Safety features include a standard four-wheel anti-lock brake system (ABS), a standard driver-side air bag\* and a rugged steel safety

cage surrounding the entire passenger compartment.

A 2.2 Liter four-cylinder engine with Multi-Port Fuel Injection makes passing and merging a breeze. If you're looking for even more power, order the optional 3.1 Liter V6. It's 140 horses strong.

\*Always wear safety belts, even with air bags.



Corsica LT Sedan.





Corsica LT seats five people in comfort.

**CORSICA MODELS**

LT Sedan

**ENGINES**

- 2.2 Liter L4 with Multi-Port Fuel Injection (standard).
- 3.1 Liter V6 with Multi-Port Fuel Injection (optional).

**TRANSMISSIONS**

- 5-spd. manual (standard).
- 3-spd. automatic (optional).

**BRAKES**

Power front disc/rear drum with four-wheel anti-lock brake system (ABS).

**DIMENSIONS (IN.)**

**SEDAN**

Wheelbase	103.4
Overall length	183.5
Overall width	68.0
Luggage capacity (cu. ft.)	13.5
Fuel tank capacity (gal.)	15.2

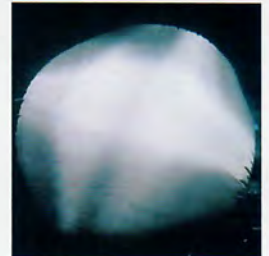
Corsica LT's large 13.5-cu.-ft. trunk adds to the family-car appeal of this 5-passenger sedan.



The optional 3.1 Liter V6 with Multi-Port Fuel Injection gives Corsica exceptional performance. Horsepower is 140 at 4200 RPM.



The optional split-folding rear seat (with trunk pass-through feature) provides additional cargo-carrying flexibility.



A driver-side air bag is a standard safety feature designed to help protect the driver in certain moderate to severe frontal collisions. Always wear safety belts, even with air bags.





Optional Lumina Custom Cloth interior with a 60/40 front seat.

## LUMINA SEDAN MODELS

Sedan	Euro Sedan	Euro 3.4 Sedan
-------	------------	----------------

### ENGINES

- 2.2 Liter L4 with Multi-Port Fuel Injection (standard on Lumina Sedan).
- 3.1 Liter V6 with Multi-Port Fuel Injection (standard on Lumina Euro Sedan and optional on Lumina Sedan).
- 3.4 Liter Twin Dual Cam V6 with Multi-Port Fuel Injection (standard on Lumina Euro 3.4 Sedan).

### TRANSMISSIONS

- 3-spd. automatic (standard on Lumina Sedan and Lumina Euro Sedan).
- 4-spd. electronic automatic (optional with 3.1 Liter V6 and standard on Lumina Euro 3.4 Sedan).

### BRAKES

Power four-wheel disc system. Four-wheel anti-lock brake system (ABS) optional on Lumina Sedan and standard on Lumina Euro Sedan and Lumina Euro 3.4 Sedan.

### DIMENSIONS (IN.)

#### MODELS

Wheelbase	107.5
Overall length	198.3
Overall width	71.0
Luggage capacity (cu. ft.)	15.7
Fuel tank capacity (gal.)	17.1*

\*16.5 with optional V6.





# LUMINA SEDAN

**L**umina Sedan is the six-passenger car that will reward your family with advanced technology, more-than-expected performance and designed-in durability.

In a Lumina, you'll find more interior room than Ford Taurus or any Japanese competitor in this price range. Quality features include four-wheel disc brakes, rust-resistant two-side-galvanized steel for

most exterior body panels, and a fully independent suspension.

The Euro version of Lumina Sedan adds standard four-wheel anti-lock brakes (ABS), a 3.1 Liter V6 and sport-styled cast-aluminum wheels.

If that's not enough, we invite you to test drive a Lumina Euro 3.4. This sport sedan features a special bucket-seat interior and a 200-HP, 3.4 Liter Twin Dual Cam V6.



Lumina Sedan.



Lumina Euro 3.4 Sedan.



Lumina Euro Sedan.



LUMINA COUPE

Lumina Coupe is one luxury coupe that's also fun to drive.

Credit a fully independent sport suspension, front-wheel drive and a 140-HP 3.1 Liter V6. You also get sedan-like room in a Lumina Coupe, with more rear-seat space than you'll find in most coupes.

The popular Euro version of Lumina Coupe features a sport suspension, aluminum wheels, red-accented exterior trim, and a rear-deck spoiler.

Then there's Z34. This high-performance coupe is powered by the 3.4 Liter Twin Dual Cam V6 — the most advanced regular-production V6 in Chevrolet history. Performance features of this 210-HP V6 include four valves per cylinder and four overhead camshafts.

## *Lumina Coupe*



Lumina Z34 Coupe.

**Lumina Euro interior  
with optional  
Custom Cloth  
front bucket seats.**







**LUMINA COUPE MODELS**

Coupe      Euro Coupe      Z34 Coupe

**ENGINES**

- 3.1 Liter V6 with Multi-Port Fuel Injection (standard on Lumina Coupe and Lumina Euro Coupe).
- 3.4 Liter Twin Dual Cam V6 with Multi-Port Fuel Injection (standard on Lumina Z34 Coupe only).

**TRANSMISSIONS**

- 3-spd. automatic (standard on Lumina Coupe and Lumina Euro Coupe).
- 4-spd. electronic automatic (optional on all models).
- 5-spd. manual (standard on Lumina Z34 Coupe only).

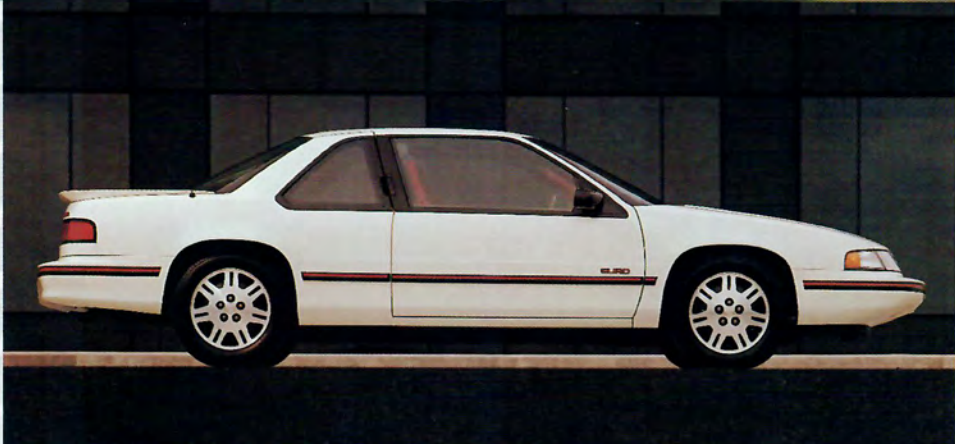
**BRAKES**

Power four-wheel disc system. Four-wheel anti-lock brake system (ABS) optional on Lumina Coupe and standard on Euro Coupe and Z34 Coupe.

**DIMENSIONS (IN.)**

**ALL MODELS**

Wheelbase	107.5
Overall length	198.3
Overall width	71.7
Luggage capacity (cu. ft.)	15.6
Fuel tank capacity (gal.)	16.5



Lumina Euro Coupe.



# LUMINA APV

Lumina APV combines aero design with minivan room, a smooth, car-like ride, and spirited V6 performance. No wonder so many Lumina APV owners wouldn't consider owning anything else.

A 3.1 Liter V6/3-speed automatic powertrain is standard. For even more power, a 170-HP 3.8 Liter V6 with 4-speed automatic is available.

Lumina APV is low and wide, for reassuring stability, and excellent

traction is provided by all-season tires and front-wheel drive. A four-wheel anti-lock brake system (ABS) is standard. The composite body panels are dent- and ding-resistant, and will never rust.

Versatility is one of Lumina APV's key advantages. Standard seating is for five. Optional modular seating for up to seven passengers is also available. With seats removed, cargo space is an impressive 112.6 cu. ft.



Lumina APV.



## LUMINA APV MODELS

APV      APV LS

### ENGINES

- 3.1 Liter V6 with Electronic Fuel Injection (standard on all models).
- 3.8 Liter 3800 V6 with Sequential-Port Fuel Injection (optional on all models).

### TRANSMISSIONS

- 3-spd. automatic (standard on all models).
- 4-spd. automatic (required option with optional 3.8 Liter V6).

### BRAKES

Power front disc/rear drum with four-wheel anti-lock brake system (ABS).

### DIMENSIONS (IN.)

#### ALL MODELS

Wheelbase	109.8
Overall length	194.2
Overall width	73.9
Luggage/cargo capacity (cu. ft.)	112.6
Fuel tank capacity (gal.)	20.0

Lumina APV LS with optional aluminum wheels.



Lumina APV LS Custom Cloth interior with optional 7-passenger seating. The second- and third-row seats are easy to remove and lightweight.





You don't change a classic; you refine it. With this in mind, the aerodynamic shape of Caprice Classic has been enhanced for 1993 with a restyled rear fender treatment, bolder taillights, and revised exterior trim.

Caprice Classic features include a roomy 6-passenger interior, a 5.0 Liter V8 with Electronic Fuel Injection and a 4-speed automatic transmission. The full-coil suspension, rear-wheel drive and full perimeter frame contribute to the legendary ride.

The new Caprice Classic LS Sedan offers an even more luxurious interior, and the option of genuine leather seating surfaces. Other available models: the performance-oriented Caprice Classic LTZ touring sedan and the 8-passenger Caprice Classic Wagon.



Caprice Classic Sedan. Safety features in every '93 Caprice Classic include a driver-side air bag,\* and a four-wheel anti-lock brake system (ABS).

\*Always wear safety belts, even with air bags.

#### CAPRICE CLASSIC MODELS

Sedan	Wagon	LS Sedan	LTZ Sedan
<b>ENGINES</b>			
• 5.0 Liter V8 with Electronic Fuel Injection (standard on all models except Caprice Classic LTZ).			
• 5.7 Liter V8 with Electronic Fuel Injection (standard on Caprice Classic LTZ and optional on Caprice Classic Wagon).			
<b>TRANSMISSION</b>			
• 4-spd. automatic with overdrive (standard on all models).			
<b>BRAKES</b>			
Power front disc/ rear drum with four-wheel anti-lock brake system (ABS).			
<b>DIMENSIONS (IN.)</b>		<b>SEDAN</b>	<b>WAGON</b>
Wheelbase		115.9	115.9
Overall length		214.1	217.3
Overall width		77.0	79.6
Luggage/cargo capacity (cu. ft.)		20.4	92.7*
Fuel tank capacity (gal.)		23.0	22.0

\* With rear seats folded down.



Caprice Classic LS Sedan.

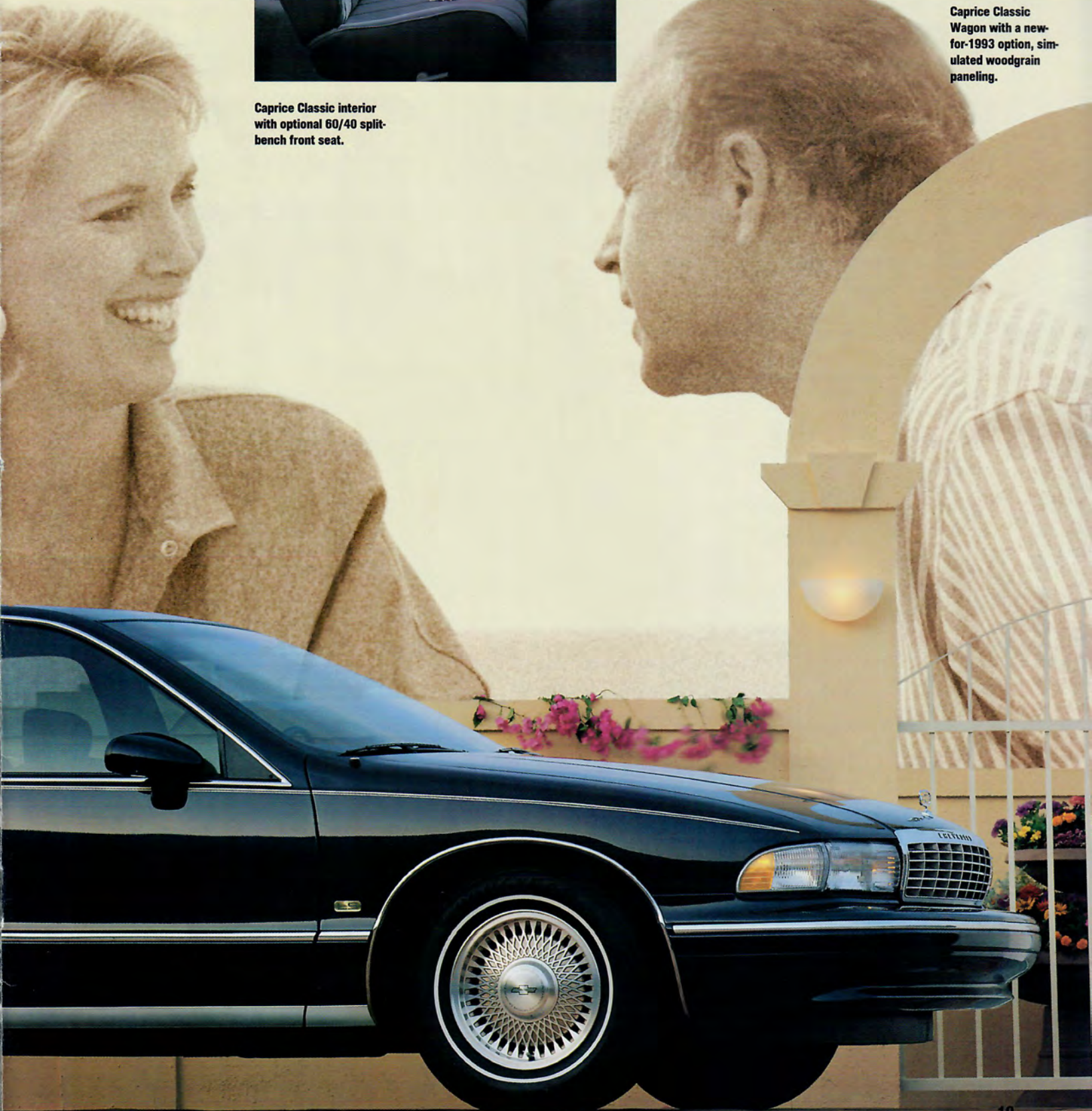




**Caprice Classic interior with optional 60/40 split-bench front seat.**



**Caprice Classic Wagon with a new-for-1993 option, simulated woodgrain paneling.**





# CORVETTE. AS PASSIONATE AS EVER.

Corvette celebrates its 40th anniversary with a very special 1993 edition.

This optional anniversary edition features a striking Ruby Red exterior and interior, and it's available as a Coupe, a Convertible or as a ZR-1.

Haven't you waited long enough to own the legendary American sports car?



**Corvette Convertible with optional  
40th Anniversary Package.**

**Important: A Word About This Catalog.** We have tried to make this catalog as comprehensive and factual as possible. We reserve the right, however, to make changes at any time, without notice, in prices, colors, materials, equipment, specifications, models and availability. Since some

information may have been updated since the time of printing, please check with your Chevrolet dealer for complete details. At your Chevrolet dealer, financing or leasing your new Chevrolet can be as easy as saying GMAC.

"Beretta" is used with permission of the Beretta Corporation—Fabbrica d'Armi P. Beretta, S.p.A. Camaro, Caprice, Cavalier, Chevrolet, the Chevrolet Emblem, Corsica, Corvette, the Corvette Emblem, ZR-1, General Motors, GM, the GM Emblem, Lumina and Z34 are registered trademarks and Chevy is a trademark of the General Motors Corporation. PASS-Key is a registered trademark of the Delco Electronics Corporation. GMAC is a registered trademark of the General Motors Acceptance Corporation. ©1992 General Motors Corporation. All rights reserved.

