

CHRYSLER



IMPORTED FROM DETROIT®

THE 2013  
CHRYSLER

200

1 800 CHRYSLER | CHRYSLER.COM

CHRYSLER IS A REGISTERED TRADEMARK OF CHRYSLER GROUP LLC.

74-383-2309

CHRYSLER



2013 200

IMPORTED FROM DETROIT®

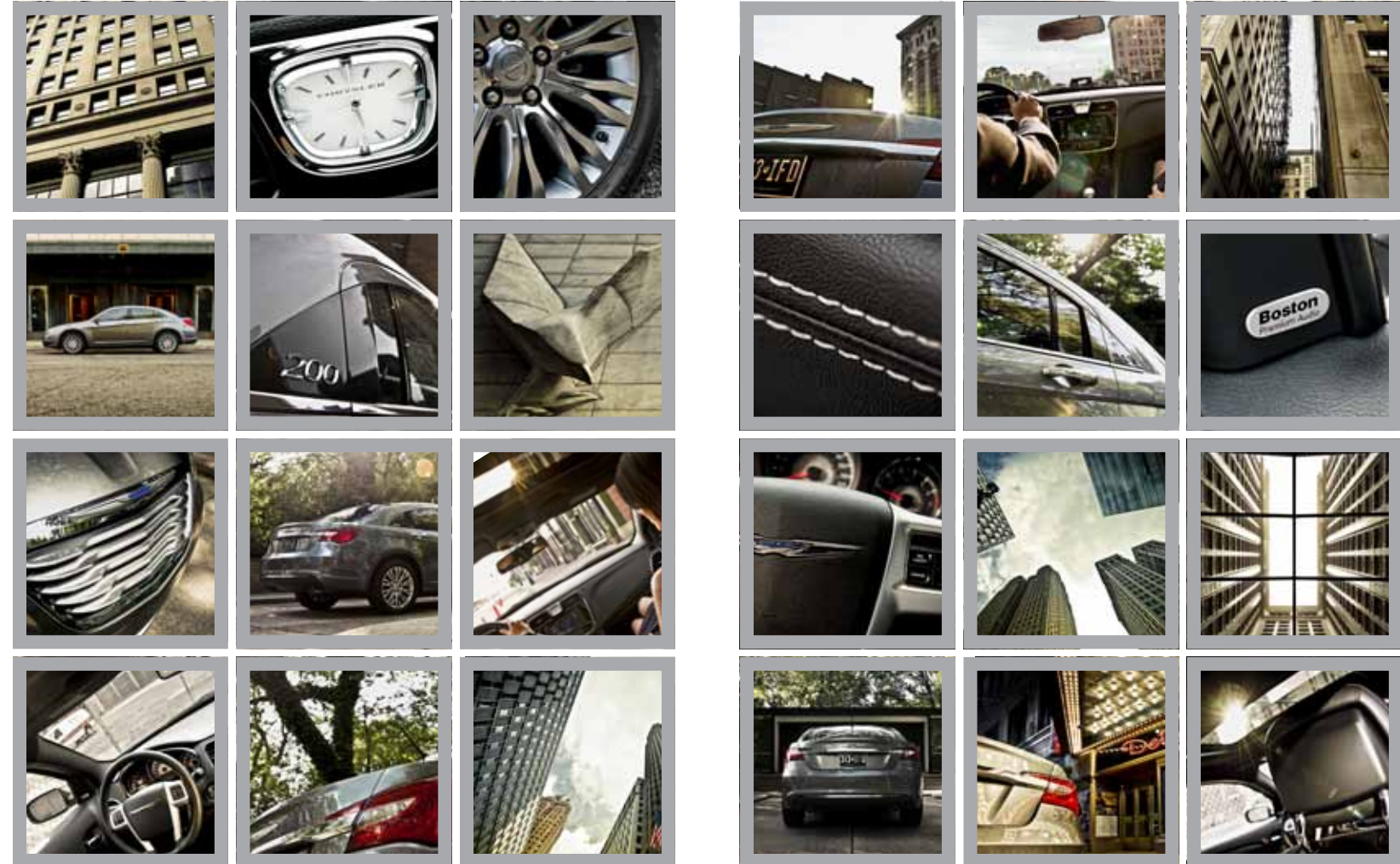
# DESTINY

IT'S WHERE STRENGTH MEETS PURPOSE.



A RIVER RUNS ALONG IT. A CITY BORN IN A PLACE THAT'S ONE PART BEAUTY AND ONE PART COMMERCE. THIS IS A JUNCTION OF ROADS, WATERWAYS, AND POSSIBILITIES. STEADFAST IN ITS SIMPLICITY YET INTRICATE IN ITS STRENGTH, IT IS THE INSPIRATION FOR THIS SEDAN, WITH ITS SLEEK AND BOLSTERED LINES THAT INVITE LOOKS FROM EVERY ANGLE. ARCHING GAZES SEEK OUT ITS NAME WITH THE EXPECTATION OF AN IMPORT. THE REASSURANCE OF ITS ORIGIN AND VALUE. THE ADAPTATION SHOWS SUSTAINABILITY AND PROVES INTELLIGENT. POWERFUL, EFFICIENT, WELL-DETAILED, AND CONTENTED. ITS WINGS SPAN WITH CONFIDENCE AND DIRECTION. A PURPOSE FULFILLED.

THE 2013 CHRYSLER 200.  
IMPORTED FROM DETROIT.®



THE STATE OF DISTINCTION.

STREET LIGHT. The 2013 Chrysler 200 makes its presence known. It takes to the streets boasting bifunctional halogen projector headlamps that utilize high/low beam capability for outstanding forward and spread-light performance, while the LED "eyebrow" light pipes give an illuminated distinction to the front end. The 200 Limited adds fog lamps that further spotlight low-visibility paths. See and be seen better in any habitat with the ultra-bright LED taillamps. The center high-mounted stop light with LED illumination means views from the rear will not go unnoticed. With design cues to enhance the rear fascia shape, the lighting features a high-function mode to match high-style form.

SUBTLETIES. MODERN PERFORMANCE AND LUXURY. PURPOSEFUL DESIGN. AESTHETIC UTILITY. TOP NOTCH MATERIALS AND TECHNOLOGY. FORM AND FUNCTION. FLUID INTEGRATION OF SHAPE. CLASSIC



WRAPPED FOR CITYSCAPES. Thought-out styling that reveals abundant standard features and innovative technologies shows you know where you're going. The Chrysler grille and badge, fascia and fender sculpting, pronounced deck lid, and available dual bright exhaust tips announce its bold arrival to any scene. The standard body-color door handles and power heated mirrors give the bodyside a streamlined stance and Limited's brightwork captures attention through well-thought-out chrome accents. A progressive windshield and front-door-glass acoustic treatment help prevent road noise from entering the cabin. All this — including edgy styling packages inside and out, smoothly rolled out onto the available 18-inch polished aluminum wheels, and much more to choose from — is what we do.



A FORTRESS OF FLAIR. For those looking to kick their urban presence up a notch, the available 200 S Appearance Package offers its own recipe for attitude, with some standout exterior touches. It starts with a Black grille and Black headlamp treatment with bright metalized projector rings and projector fog lamps. The S reinforces its strong profile with body-color door handles and body-color heated exterior mirrors, Black painted rear fascia bar, Black "S" badge, and 18-inch polished aluminum wheels featuring Black painted pockets. The brilliant LED taillamps and available dual bright exhaust tips leave a trendsetting impression.



URBAN DWELLING. 200 Limited's available S Package includes all of the exterior appearance treatments above, making it an inside job as well. It features Black leather-trimmed seating accented in Silver stitching with distinctive digital suede inserts. The driver and front-passenger seats feature embroidered "S" graphics as a unique stylish touch, and a perforated leather-wrapped steering wheel delivers an added dose of finesse. The Limited S Package also includes the 3.6L Pentastar® V6 engine with 283 horsepower, Flex Fuel capability, and dual exhaust system for some added boost to the boast.







THE QUIET DURING ANY STORM.

**THE DRIVER'S QUARTERS.** Whether the forecast calls for inclement weather or fierce traffic, the Chrysler 200 is your sanctuary. The interior details reveal an acoustic-laminated windshield and front-door glass, super-soft interior materials, and sound-absorbing treatments throughout the cabin and instrument panel, which all provide sound dampening, comfort, and reduced noise and vibration levels for the ride. Premium leather seating surfaces with detailed accent stitching are standard on Limited. The bolstered seats envelop occupants while sturdy cushion design and materials enhance comfort. An available leather-wrapped steering wheel and shift knob with chrome accents provide luxury details that confirm the upgrade, as well as the standard tilt/telescoping steering column with integrated controls.

**MINED TO MATTER.** The interior refuge of the 200 offers luxury components that allow a peaceful state of mind, making each trip enjoyable, no matter what daily challenges unfold. The instrument panel, gauge cluster, and dash enhance the finishing seams throughout, which means tight tolerances for smooth surface transitions. Ambient LED lighting highlights the beautiful interior, while the four-spoke steering wheel with integrated controls allows the driver easy access to radio, cruise, and available hands-free phone controls. Illuminated cup holders and a classic-design analog clock supplement the cache of added designed-in conveniences. Touring and Limited also include automatic temperature control, sun visors with illuminated vanity mirrors, SiriusXM Satellite Radio,\*\* six premium speakers, and Boston Acoustics® speakers on Limited, Tire Pressure Monitoring Display, Electronic Vehicle Information Center (EVIC) with trip computer and compass, universal garage door opener, and automatic headlamps.

\*A note about this brochure: All disclaimers and disclosures can be found in the back of this catalog.



**HEATED FRONT SEATS.** The available heated eight-way power driver's seat allows tailored comfort by adjusting both the seating position and the heat, creating an ideal driving environment. The front passenger can also control the heat feature on his/her seat.

**REAR SEAT WITH TRUNK PASS-THRU.** Rear-seat passengers enjoy spacious, comfortable seating. And the trunk pass-thru provides additional cargo capacity, allowing longer items to be stored in the trunk.

STAY CONNECTED, ENTERTAINED, AND FOCUSED ON DRIVING WITH THE TOUCH SCREEN MADE TO MAKE YOUR LIFE EASIER.



**ENTERTAINMENT.** Manage all of your media with multiple ways to access audio, including available Bluetooth® streaming audio, iPod® control with Voice Command, DVD player, auxiliary input jack, and compatible multimedia devices with SiriusXM Satellite Radio.<sup>1</sup> One year of SiriusXM Satellite Radio Service included.

**PHONE.** Uconnect® Phone is the in-vehicle, voice-activated communication system that allows you to pair up to seven Bluetooth compatible phones and then talk virtually hands-free. This system is also clever enough to synchronize with your phone's contacts<sup>2</sup> — up to 1,000 entries.

**NAVIGATION.** Provides turn-by-turn voice guidance and visual display. It can also locate nearby restaurants, shopping, hospitals, or points of local interest through a GPS system. It features an intuitive user interface, bringing the handheld experience to a factory in-dash radio. With SiriusXM Traffic,<sup>1</sup> you'll get continuously detailed information on accidents, traffic flow, construction, and road closures.

**VOICE COMMAND.** It simplifies driving by letting you keep your eyes on the road and your hands on the wheel. Use your voice to select AM/FM radio stations, SiriusXM Satellite Radio<sup>1</sup> channels, and make calls.

**WEB.** Put the power of high-speed Internet in your vehicle with Uconnect Web,<sup>3</sup> making your vehicle a mobile hotspot. Passengers can use multiple devices at the same time. There's no need for cell cards or software with this Authentic Chrysler Accessory by Mopar®. It's all wireless. Subscription required. Sold separately.

**SIRIUSXM TRAVEL LINK<sup>1</sup>** Brings national weather forecasts, fuel prices for local gas stations, in-game and final sports scores, weekly sports schedules, local movie theater listings, and local ski conditions right to your vehicle.

**SIRIUS SELECT<sup>1</sup> — Over 130 channels.** This is what satellite radio is all about. Enjoy commercial-free music, plus sports, news, talk, and entertainment. And get a selection of premium programming, including every NFL game, Howard Stern, every NASCAR® race, Martha Stewart, and more. Visit [www.siriusxm.com](http://www.siriusxm.com) for details.

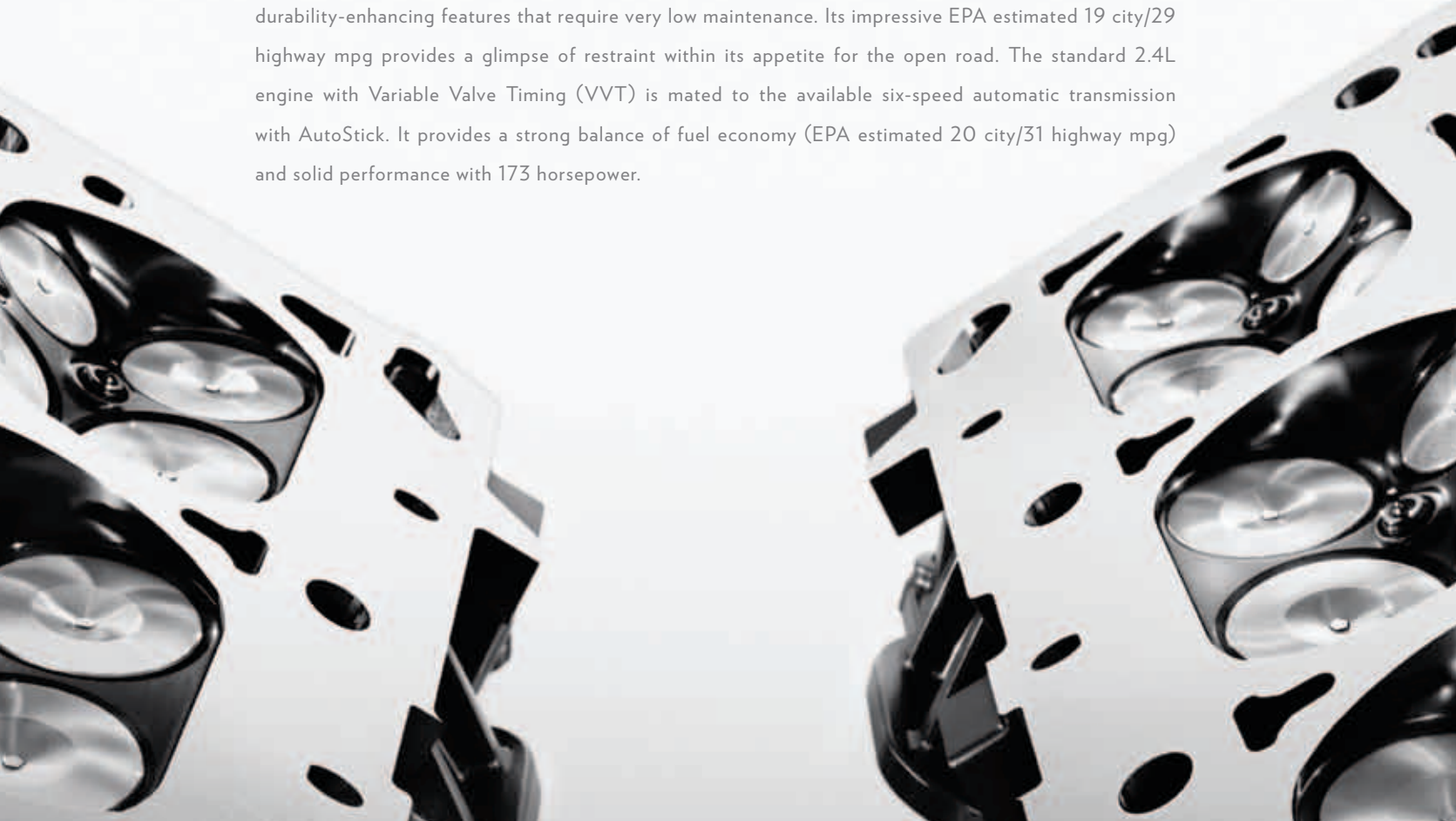
GO TO [DRIVEUCONNECT.COM](http://DRIVEUCONNECT.COM) TO FIND OUT MORE.





BEST-IN-CLASS<sup>4</sup>  
AVAILABLE HORSEPOWER BRED FOR EFFICIENCY.

It's the most advanced six-cylinder engine ever produced by Chrysler Group LLC, and it just happens to be shared with its Chrysler 300 stablemate. The available 3.6L best-in-class<sup>4</sup> 283-horsepower Pentastar<sup>®</sup> V6 DOHC is paired with a six-speed automatic transmission with first-rate noise, vibration, and harshness control. The only thing better than numbers like 283 horsepower and 260 lb-ft of torque is the engine's durability-enhancing features that require very low maintenance. Its impressive EPA estimated 19 city/29 highway mpg provides a glimpse of restraint within its appetite for the open road. The standard 2.4L engine with Variable Valve Timing (VVT) is mated to the available six-speed automatic transmission with AutoStick. It provides a strong balance of fuel economy (EPA estimated 20 city/31 highway mpg) and solid performance with 173 horsepower.



BORN SMOOTH.  
CALIBRATED FOR SOLID REACTIONS TO BUMPS IN THE ROAD.



**RIDE AND HANDLING.** Virtually every system for this sedan has been engineered for an exceptional performance experience. MacPherson struts sit up front to help provide an optimum balance of ride, handling, and noise isolation. These are supported by multilink coils in the back, which allow individual articulation of the rear wheels over varying road surfaces for a level ride. Additional components include large-diameter front and rear sway bars, stiffened body mounts and soft ride rate, all paving the way for a smooth and controlled ride. These drivetrain and suspension enhancements also contribute to the reduction of noise, vibration, and harshness (NVH), while the premium 17-inch and 18-inch All-Season tires provide solid balance and response.

**AUTOSTICK.** When paired with either the 2.4L four-cylinder engine or the 3.6L Pentastar® V6 engine, the six-speed automatic transmission with available AutoStick shifter allows clutchless manual or automatic gear selection for a dynamic driving experience.





**ELECTRONIC STABILITY CONTROL/ESC.**<sup>5</sup> In adverse conditions, ESC and Brake Assist work with an all-speed traction control system to help maintain vehicle stability, limit oversteering or understeering, and automatically apply brake force when needed.

**AIR BAGS.**<sup>6</sup> All 200 models feature standard advanced multistage driver and front-passenger air bags, supplemental side-curtain air bags, and supplemental driver and front-passenger seat mounted air bags.

**ACTIVE FRONT HEAD RESTRAINTS.**<sup>7</sup> Head restraints automatically move forward and upward in the event of a rear-end collision to decrease the space between the head restraint and the occupant's head, helping to reduce the chance of injury.

**TIRE PRESSURE MONITORING SYSTEM.** A warning lamp in the instrument cluster notifies you of low tire pressure. A Tire Pressure Monitoring Display alerts you of individual tire pressure for all four tires and is part of the available Electronic Vehicle Information Center (EVIC).



**ANTILOCK BRAKE SYSTEM/ABS.** Standard four-wheel antilock disc brakes afford premium stopping power from state-of-the-art electronics that provide faster system response. ABS senses and prevents wheel lockup, offering improved steering control under extreme braking and/or slippery conditions.

**SENTRY KEY® THEFT-DETERRENT SYSTEM.** A unique security system code matched only to your vehicle allows your 200 to start only with the special encoded key.

**SECURITY ALARM.** This system monitors the door-ajar and trunk switches as well as the ignition circuit for unauthorized entry. The lights flash and the horn sounds, alerting you if someone else is trying to enter your vehicle.

**REMOTE KEYLESS/ILLUMINATED ENTRY.** For additional convenience and security, this feature unlocks the driver's door on the first press of the key fob and all doors on the second press, illuminating interior lights once the vehicle is unlocked.

FRONT AND REAR CRUMPLE ZONES ARE DESIGNED TO HELP ABSORB ENERGY AND REDIRECT IT AWAY FROM PASSENGERS.



THE HIGH-STRENGTH STEEL HELPS TO REDUCE THE RISK OF INJURY IN THE EVENT OF A COLLISION.

**MAKE IT YOURS.**  
AUTHENTIC CHRYSLER ACCESSORIES BY MOPAR.

WITH YOU EVERY MILE. Mopar is with you from the moment you take possession of your new Chrysler 200 and for every mile thereafter. It helps to further your vehicle's distinction with accessories of every kind. They are designed by the same engineers of your vehicle and made specifically for your model. It's get-it-right-the-first-time satisfaction with seamless fit and finish, exact color matches, and high-quality materials that have been thoroughly tested.



Mopar also assures you with expert technicians who know your make and model best from Vehicle Protection Plans and Express Lane Service to Mopar Owner Connect, a secure owners-only site, accessible by registering at [owners.chrysler.com](http://owners.chrysler.com). There, you'll enjoy online access to service records, extensive vehicle information, and much more. Learn more about the world of Mopar and all it has to offer at [mopar.com](http://mopar.com). See your Chrysler dealer for the latest accessories and parts available.

(Left to right, top to bottom) Illuminated Door Sill Guards — Hitch-Mount Bike Carrier — Katzkin® Leather Interiors — Ambient Light Kit — KICKER® Sound Systems — Uconnect Web.<sup>(3)</sup>









18-INCH POLISHED ALUMINUM WHEEL Optional on Limited.

## THE CHRYSLER COLLECTION

Bring the Chrysler brand style and distinction to your lifestyle in and out of your vehicle with authentic professional, active, travel and home accessories, apparel, and gift cards for your favorite Chrysler enthusiast. You'll also wear your pride of ownership on your sleeve when you boast one of the popular Imported From Detroit® garments. Shop the complete collection to show you know what earned luxury is all about at [Chrysler.com/collection](http://Chrysler.com/collection).



17-INCH WHEEL COVER Standard on LX.



17-INCH MACHINED CAST ALUMINUM WHEEL Standard on Touring and Limited.



18-INCH CAST ALUMINUM WHEEL WITH PAINTED SATIN SILVER FINISH Optional on Touring and Limited.



18-INCH POLISHED ALUMINUM WHEEL WITH BLACK PAINTED POCKETS Optional on Limited and Touring (with S Appearance Package).

## WARRANTIES

Chrysler vehicles are covered by a Chrysler Group LLC 3-Year or 36,000-Mile Basic Limited Warranty (excludes normal maintenance and wear items), as well as a 5-Year or 100,000-Mile Powertrain Limited Warranty that is fully transferable and includes Roadside Assistance Services: Flat Tire, Lockout, Towing, Out of Gas/Fuel Delivery, and Battery Jump Assistance. Ask your dealer for details and a copy of these limited warranties.

## AUTHENTIC CHRYSLER ACCESSORIES BY MOPAR

Are designed specifically for your Chrysler vehicle for exceptional fit, finish, and performance. Visit your dealership or [mopar.com](http://mopar.com).

## AUTOMOBILITY

Chrysler Group LLC's Automobility program provides aftermarket reimbursement incentives on adaptive vehicle upfit equipment in order to help provide safe and reliable vehicle modifications to enhance accessibility for all people. For more information, call (800) 255-9877 or visit [chryslerautomobility.com](http://chryslerautomobility.com).

## SiriusXM SATELLITE RADIO

SiriusXM Satellite Radio<sup>1</sup> delivers over 130 channels, including commercial-free music, sports, news, talk, entertainment, traffic, and weather. Factory-installed SiriusXM Satellite Radio includes a one-year subscription. For more information, go to [siriusxm.com](http://siriusxm.com).

## UCONNECT<sup>2</sup>

With Uconnect, you're always connected – to people, places, music, movies, and the Internet.



Earn 3 points on qualifying purchases made at Chrysler Group LLC dealerships, 2 points per \$1 on qualifying travel purchases, and 1 point per \$1 on qualifying purchases everywhere else with the new Chrysler MasterCard.<sup>®</sup> Points may be redeemed at your local dealership for cash off your new or used vehicle, accessories, parts, or service – including your next oil change. Or choose from hundreds of other rewards, including travel, cash back to your account, merchandise, or gift cards.<sup>8</sup> For more information or to apply, visit [ChryslerCard.com](http://ChryslerCard.com).

## CHRYSLER SERVICE CONTRACTS

Chrysler Group LLC has a vested interest in your satisfaction and owner experience with your new Chrysler vehicle. Chrysler Group Service Contracts offer extended service plans to help ensure that you'll enjoy your vehicle for many years down the road – for just pennies a day. For more information on comprehensive vehicle coverage, see your Chrysler dealer, call (800) 442-2666, or visit [chrysler.com/jssc](http://chrysler.com/jssc).

## JOIN IN

Join fellow enthusiasts and tell your story by posting comments, participating in discussions, and sharing your Chrysler vehicle photos and videos. Join our community on Facebook ([facebook.com/Chrysler](http://facebook.com/Chrysler)), follow us on Twitter ([twitter.com/Chrysler](http://twitter.com/Chrysler)), and check us out on YouTube ([youtube.com/TheChryslerChannel](http://youtube.com/TheChryslerChannel)). Thank you for following.

## GO MOBILE

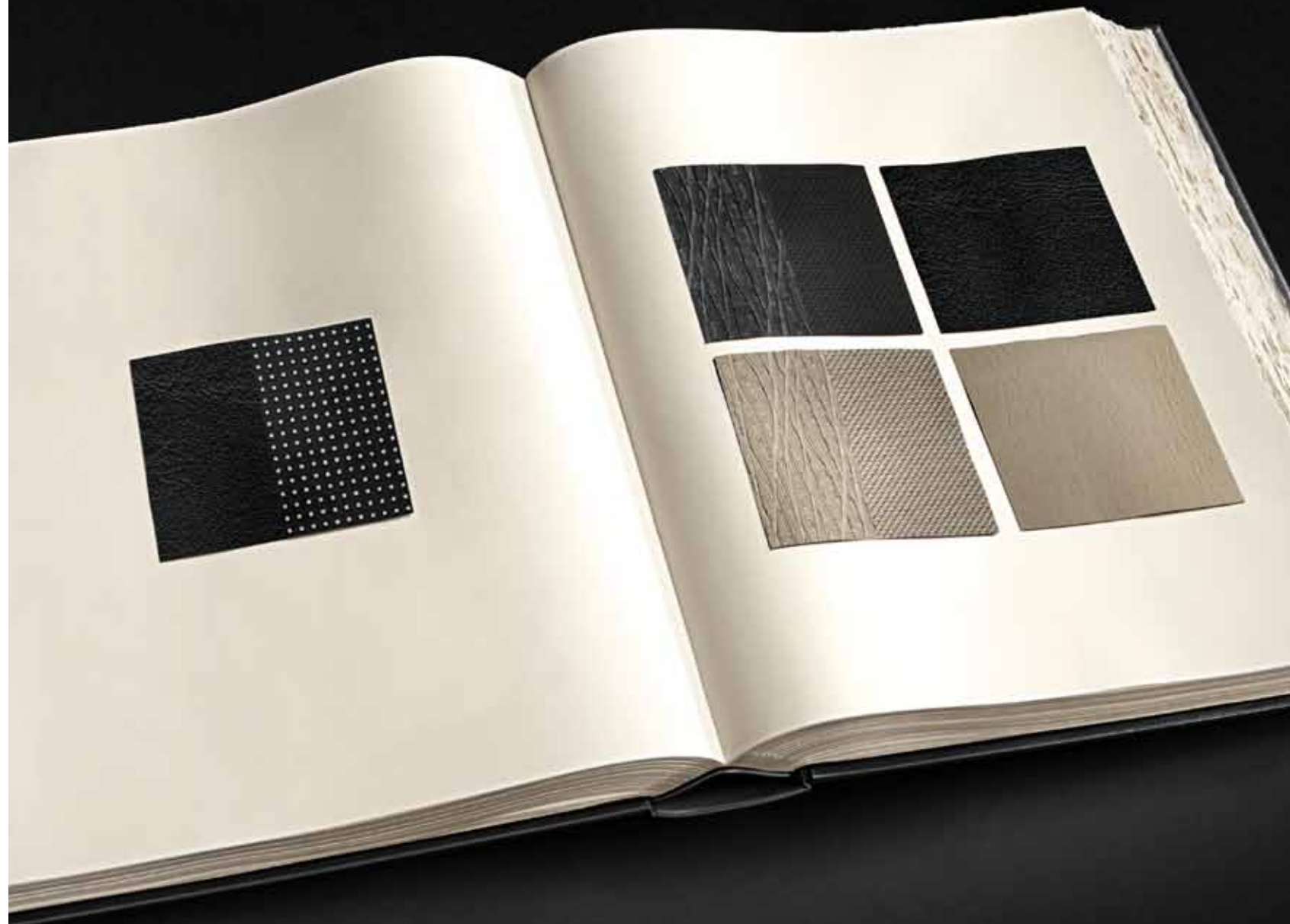
Take an engaging, multimedia tour of your vehicle on your mobile device. Visit the Chrysler Group LLC page in iTunes<sup>®</sup> from your smartphone or iPad<sup>™</sup> to download the most up-to-date apps on all of the company's vehicles. Log on to the Chrysler.com mobile site for a comprehensive, at-a-glance review of what you need to know about your vehicle. Experience interactive demonstrations of the entire lineup, gaining access to product information at your fingertips, wherever you go.



<sup>1</sup>SiriusXM service requires a subscription, sold separately, after 12-month trial included with vehicle purchase. If you decide to continue your SiriusXM service at the end of your trial subscription, the plan you choose will automatically renew and bill at then-current rates until you call SiriusXM at 1-866-635-2349 to cancel. See our Customer Agreement for complete terms at [www.siriusxm.com](http://www.siriusxm.com). Programming subject to change. Sirius satellite service is available only to those at least 18 and older in the 48 contiguous USA, D.C., and P.R. (with coverage limitations). SiriusXM Traffic available in select markets. See [siriusxm.com/traffic](http://siriusxm.com/traffic) for more information. Sirius, XM and all related marks and logos are trademarks of Sirius XM Radio Inc. <sup>2</sup>Phone must support Bluetooth Phone Book Access Profile (PBAP). <sup>3</sup>Uconnect Web feature is not intended for use by the driver while the vehicle is in motion. Always drive carefully. Subscription required. <sup>4</sup>Based on latest available information of Chrysler Group LLC Standard Mid-Size Sedan segment. <sup>5</sup>No system, no matter how sophisticated, can repeal the laws of physics or overcome careless driving actions. Performance is limited by available traction, which snow, ice, and other conditions can affect. When the ESC warning lamp flashes, the driver needs to use less throttle and adapt speed and driving behavior to prevailing road conditions. Always drive carefully, consistent with conditions. Always wear your seat belt. <sup>6</sup>The Advanced Front Air Bags in this vehicle are certified to the new U.S. federal regulations for advanced air bags. Children 12 years old and younger should always ride buckled up in a rear seat. Infants in rear-facing child restraints should never ride in the front seat of a vehicle with a passenger front air bag. All occupants should always wear their lap and shoulder belts properly. <sup>7</sup>Always sit properly with the head restraint properly adjusted. Never place anything in front of the head restraint. <sup>8</sup>Complete details, including restrictions, limitations, and exclusions, will be available when you become a cardmember. MasterCard is a registered trademark of MasterCard International Incorporated. This card is issued by First BankCard, a division of First National Bank of Omaha, pursuant to a license by MasterCard International Incorporated.

This brochure is a publication of Chrysler Group LLC. All product illustrations and specifications are based upon current information at the time of publication approval. Chrysler Group LLC reserves the right to make changes from time to time, without notice or obligation, in prices, specifications, colors, materials and to change or discontinue models, which are considered necessary to the purpose of product improvement or for reasons of design and/or marketing. Chrysler, the Chrysler wing design, Chrysler 200, Imported From Detroit, Mopar, Pentastar, Sentry Key and Uconnect are registered trademarks of Chrysler Group LLC. Bluetooth is a registered trademark of Bluetooth SIG, Inc. Boston Acoustics is a registered trademark of Boston Acoustics, Inc. Facebook is a registered trademark of Facebook, Inc. HomeLink is a registered trademark owned by Johnson Controls, Inc. iPad, iPod and iTunes are registered trademarks of Apple Inc. Katkin is a registered trademark of Katkin Leather Interiors, Inc. KICKER and the KICKER logo are registered trademarks of Stillwater Design and Audio, Inc. NASCAR is a registered trademark of the National Association of Stock Car Auto Racing, Inc. NFL is a registered trademark of the National Football League. Sirius, XM and all related marks and logos are trademarks of SiriusXM Radio Inc. and its subsidiaries. The Twitter name, logo, Twitter T, Tweet, and Twitter bird are trademarks of Twitter, Inc. in the United States and other countries. YouTube is a registered trademark of Google Inc.

INTERIOR COLORS



ROYALE LEATHER TRIM WITH  
DIGITAL SUEDE INSERTS  
Black

WILLOW AND BROOK  
CLOTH  
Black  
Light Frost

ROYALE LEATHER TRIM  
Black  
Light Frost



EXTERIOR COLORS

(From left to right, top to bottom) CASHMERE PEARL\* – BLACK – CRYSTAL BLUE PEARL\* – DEEP CHERRY RED CRYSTAL PEARL\* –  
DEEP AUBURN PEARL\* – TUNGSTEN METALLIC – TRUE BLUE PEARL\* – BRIGHT WHITE – BILLET SILVER METALLIC

\* Not available with S Packages. †Late availability.



BLACK

TUNGSTEN METALLIC

BILLET SILVER METALLIC

TRUE BLUE PEARL\*

CRYSTAL BLUE PEARL\*

DEEP CHERRY RED CRYSTAL PEARL†

DEEP AUBURN PEARL\*

CASHMERE PEARL\*

BRIGHT WHITE

\* Not available with S Packages. †Late availability.



