

CHRYSLER



IMPORTED FROM DETROIT®

THE 2013  
CHRYSLER  
**200**  
CONVERTIBLE

1800 CHRYSLER | CHRYSLER.COM

CHRYSLER IS A REGISTERED TRADEMARK OF CHRYSLER GROUP LLC.

74-383-2310



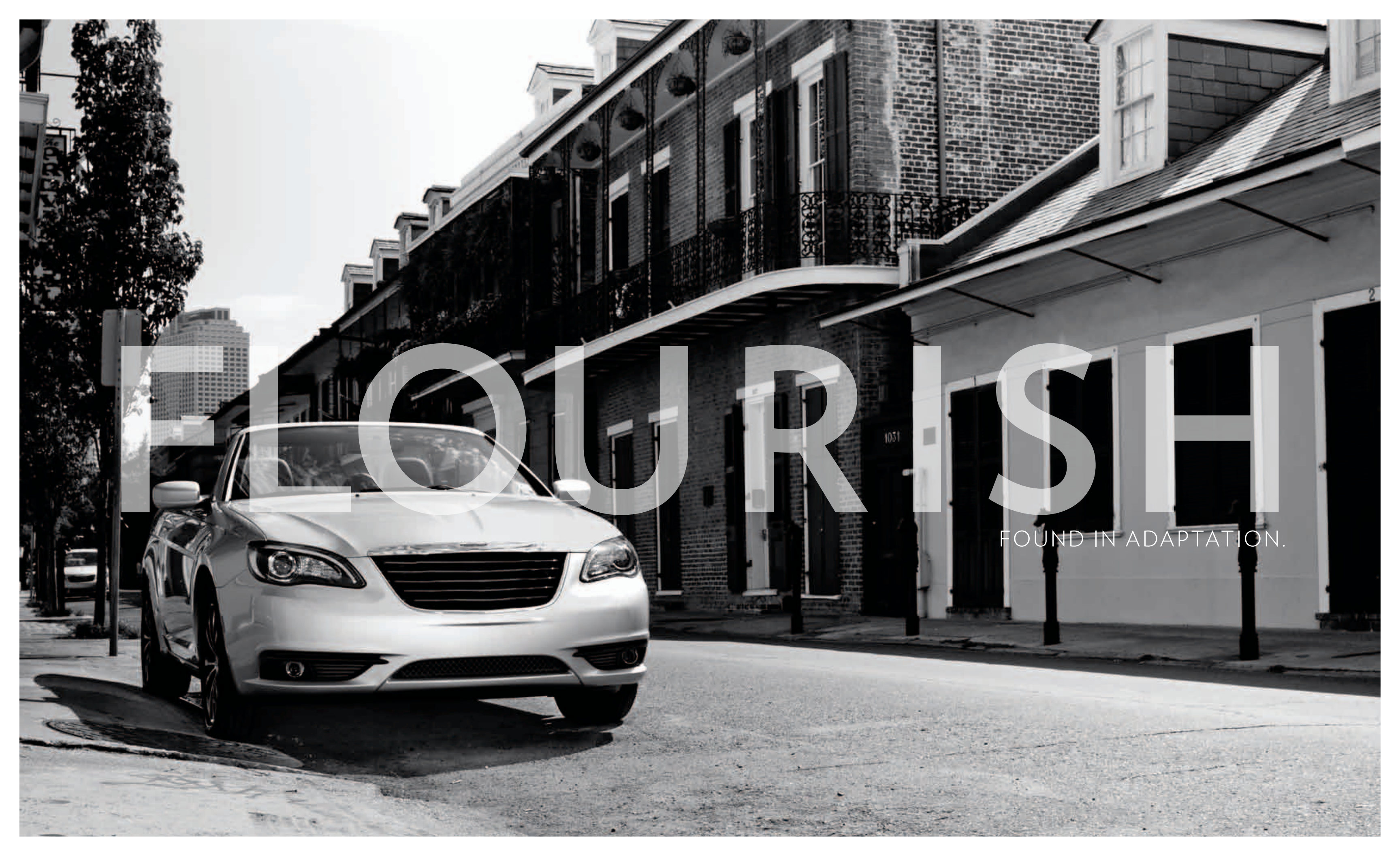
CHRYSLER



2013 200 CONVERTIBLE

IMPORTED FROM DETROIT®





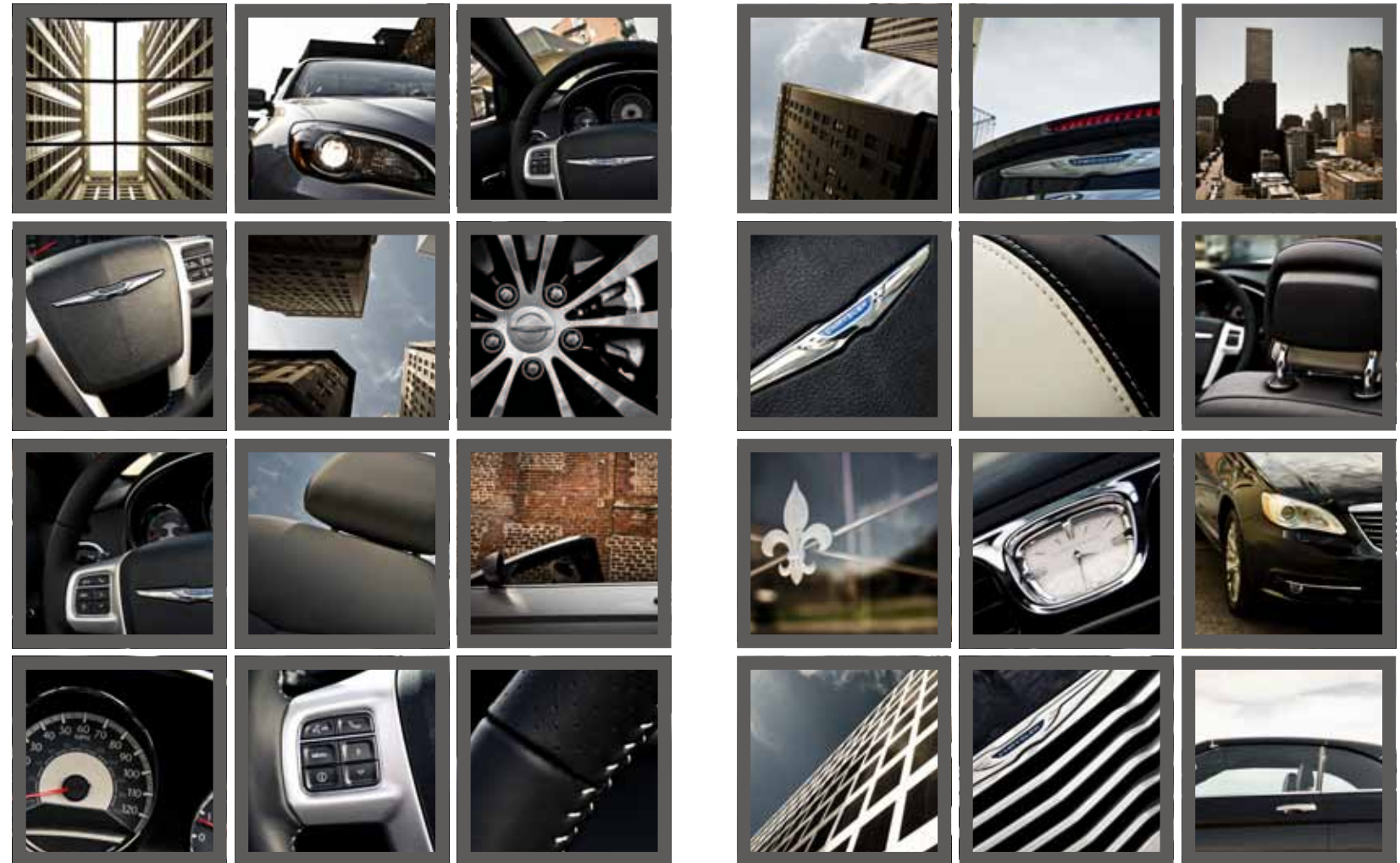
# FLORISH

FOUND IN ADAPTATION.



IT'S THE REWARD THAT COMES WITH KNOWING YOU'VE WORKED AN HONEST DAY. A LONG WEEK. THAT FEELING OF A JOB WELL DONE, APPRECIATING THE TIME YOU PUT IN, TO TAKE IT OFF. TAKE IT OUT. YOU DESERVE IT. AND YOU DESERVE A CONVERTIBLE THAT SAYS YOU KNOW SOMETHING ABOUT VALUE, ABOUT RESPONSIBILITY, ABOUT FUN, AND ABOUT STYLE. THIS ISN'T A CONVERTIBLE THAT KEEPS YOU WORKING; IT'S SIMPLY THE ONE THAT WORKS FOR YOU. THE ONE YOU CAN SHARE THE RIDE WITH AND TAKE ALONG MORE. TAKE FREEDOM AND PROSPER.

THE CHRYSLER 200 CONVERTIBLE.  
IMPORTED FROM DETROIT.®





RISE.

TAKE THE BEST OF BOTH WORLDS — BIG AND EASY. It's about knowing the value of your time and having a choice of what to do with it. Some decisions are just made easier than others. Like the Chrysler 200 Convertible, which offers two different power tops to fit your lifestyle. A classic power cloth soft top easily folds into the trunk, making it simple to enjoy open-air driving. The available retractable steel hardtop combines the fun of a convertible with the practicality of a conventional sedan. Both feature a seamless look when lowered, thanks to a power hard tonneau cover. It's the freedom of choice and power that comes standard on the Chrysler 200 Convertible. Take your turn.



200 CONVERTIBLE IS THE ONLY VEHICLE IN ITS CLASS TO OFFER A RETRACTABLE HARDTOP.\*

\* A NOTE ABOUT THIS BROCHURE: All disclaimers and disclosures can be found in the back of the brochure.



GO OUT AND TAKE IT IN.




**SWITCH IT UP.** Experience the power of superior design when you choose from the standard cloth soft top or the available retractable steel hardtop. In both soft and hard forms, the power convertible top folds in three sections and automatically latches with a switch on the center console or the press of a button on the key fob. Each takes approximately 30 seconds to raise or retract while an automatic hard cover conceals the stowage area when the top is down. When either top is down, the trunk capacity is still more than enough to easily fit two golf bags. Tightened flow-through design further enhances the feeling of floating on air.



**SMART MADE SIMPLE.** Also included is an automatic Smart Glass system. It protects the top weather strips and window seals by lowering the windows slightly whenever the convertible top is lowered or when the doors are opened or closed. When the door handle is pulled, the windows lower approximately half an inch, preventing resistance or damage to the window or top weather strips as the door opens. Once the door is closed, the window fully closes.







TAKE THE INTERIOR ADVANTAGE. The 200 S Convertible takes it up a few more notches by taking that attitude inside. It features Black leather-trimmed seating accented in Silver stitching with distinctive digital suede inserts. The driver and front-passenger seats feature embroidered "S" graphics as a uniquely noticeable touch, and a perforated leather-wrapped steering wheel delivers an added dose of hearty handling. The S also just happens to include the 3.6L Pentastar® V6 engine with dual exhaust system for the boost to back up the boast.

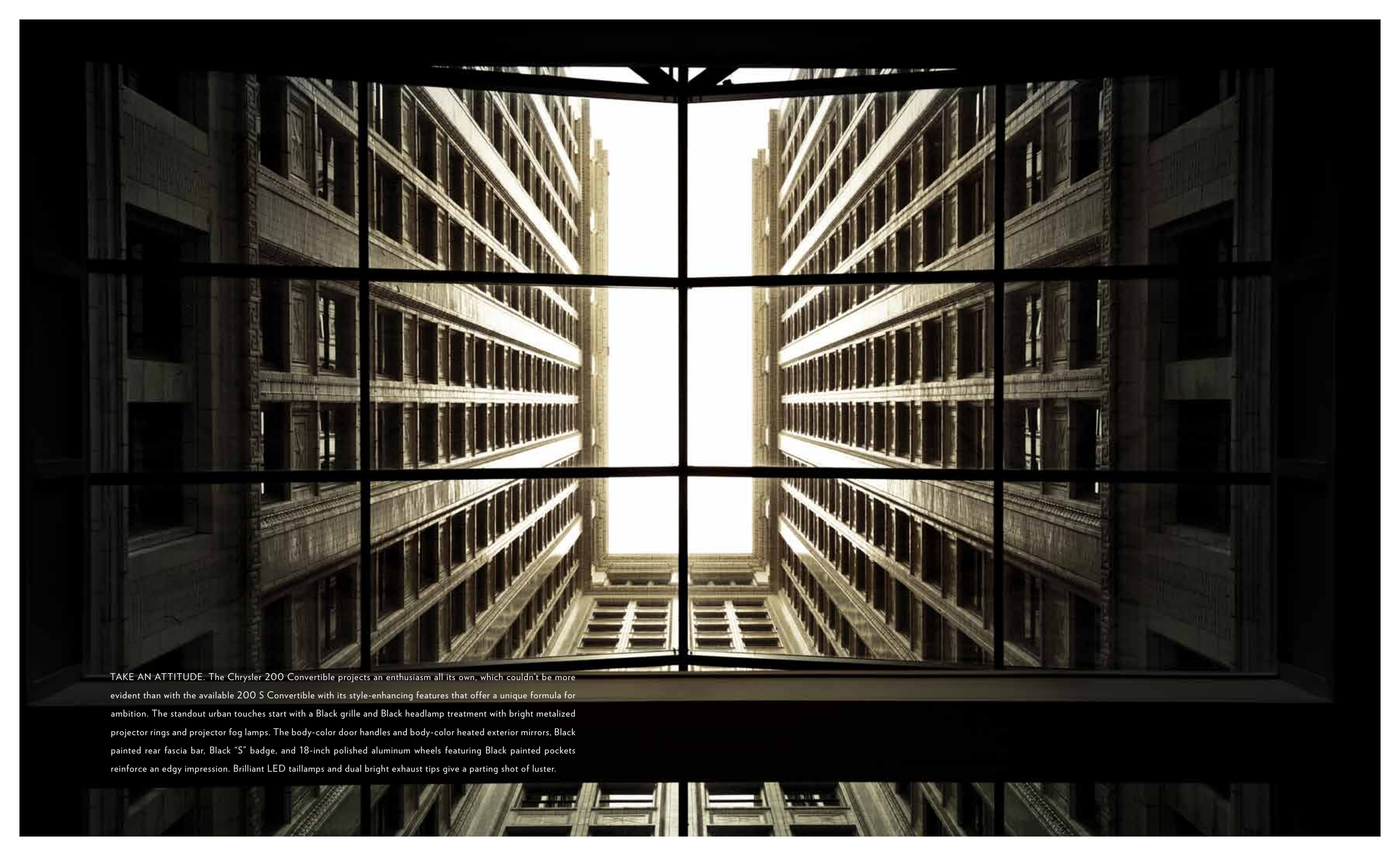
IT TAKES A STRONG COMMITMENT  
TO PERFORMANCE AND EFFICIENCY SERIOUSLY.

283<sup>HP</sup> | 29<sup>HWY  
MPG\*</sup>  
PENTASTAR® V6 ENGINE

TAKE A LEAD. It is the most advanced six-cylinder engine ever produced by Chrysler Group LLC, and it just happens to be shared with its Chrysler 300 stablemate. The available 3.6L Pentastar® V6 with Variable Valve Timing (VVT) is paired with a six-speed automatic transmission with first-rate noise, vibration, and harshness control. The only thing better than numbers like 283 horsepower and 260 lb-ft of torque is the engine's durability-enhancing features that require very low maintenance. Its impressive EPA estimated 19 city/29 highway mpg provides a glimpse of restraint within its appetite for the open road. The standard 2.4L engine with VVT is mated to a six-speed automatic transmission with AutoStick. It provides a strong balance of fuel economy (EPA estimated 18 city/27 highway mpg) and solid performance with 173 horsepower.

\*Based on EPA estimated 19 city/29 hwy mpg, when equipped with 3.6 L Pentastar V6 engine with 6-speed automatic transmission.





TAKE AN ATTITUDE. The Chrysler 200 Convertible projects an enthusiasm all its own, which couldn't be more evident than with the available 200 S Convertible with its style-enhancing features that offer a unique formula for ambition. The standout urban touches start with a Black grille and Black headlamp treatment with bright metalized projector rings and projector fog lamps. The body-color door handles and body-color heated exterior mirrors, Black painted rear fascia bar, Black "S" badge, and 18-inch polished aluminum wheels featuring Black painted pockets reinforce an edgy impression. Brilliant LED taillamps and dual bright exhaust tips give a parting shot of luster.





**BREATHING ROOM.** The bolstered seats envelop you and your passengers with available leather-trimmed and cloth seating materials and six-way power driver and front-passenger seats. The soft-touch armrests, premium touch points, automatic temperature control, and LED ambient lighting provide comfort continuity. Share the life of leisure with seating for four and 'best-in-class' rear leg room; and whether the top is up or down, the spacious trunk allows everyone to bring their own share of wares.



**DRIVER'S CHOICE.** Enjoy this position the most with the intuitive flow of the one-piece instrument panel, bezels, gauges, and integrated controls on the standard leather-wrapped steering wheel. Operate the radio, cruise control, available hands-free phone, and other vehicle functions conveniently without having to change hand or eye placement. Innovative features that connect you to the outside world include an available Uconnect® touch screen with Voice Command and available SiriusXM Satellite Radio.<sup>2</sup> The convertible-top button is brilliantly located in the center console for easy access anytime.



STAY CONNECTED, ENTERTAINED, AND FOCUSED ON DRIVING.



**ENTERTAINMENT.** Manage all of your media with multiple ways to access audio, including Bluetooth® streaming audio, iPod® control with Voice Command, DVD player, auxiliary input jack, and compatible multimedia devices with SiriusXM Satellite Radio.<sup>2</sup> One year of SiriusXM Radio Service included.

**PHONE.** Uconnect® Phone is the in-vehicle, voice-activated communication system that allows you to pair up to seven Bluetooth compatible phones and then talk virtually hands-free. This system is clever enough to synchronize with your phone's contacts<sup>3</sup> — up to 1,000 entries.

**NAVIGATION.** Provides turn-by-turn voice guidance and visual display. It can also locate nearby restaurants, shopping, hospitals, or points of local interest through a GPS system. It features an intuitive user interface, bringing the handheld experience to a factory in-dash radio. With SiriusXM Traffic,<sup>2</sup> you'll get continuously detailed information on accidents, traffic flow, construction, and road closures.

**VOICE COMMAND.** It simplifies driving by letting you keep your eyes on the road and your hands on the wheel. Use your voice to select AM/FM radio stations, SiriusXM Satellite Radio<sup>2</sup> channels, and make calls.

**WEB.** Put the power of high-speed Internet in your vehicle with Uconnect Web,<sup>4</sup> making your vehicle a mobile hotspot. Passengers can use multiple devices at the same time. There's no need for cell cards or software with this Authentic Chrysler Accessory by Mopar. It's all wireless. Subscription required. Sold separately.

**SIRIUSXM TRAVEL LINK.<sup>2</sup>** Brings national weather forecasts, fuel prices at local gas stations, in-game and final sports scores, weekly sports schedules, local movie theater listings, and local ski conditions right to your vehicle.

**SIRIUS SELECT<sup>2</sup> — Over 130 channels.** This is what satellite radio is all about. Enjoy commercial-free music, plus sports, news, talk, and entertainment. And get a selection of premium programming, including every NFL game, Howard Stern, every NASCAR® race, Martha Stewart, and more. Visit [www.siriusxm.com](http://www.siriusxm.com) for details.

**GO TO [DRIVEUCONNECT.COM](http://DRIVEUCONNECT.COM) TO FIND OUT MORE.**





CALIBRATED FOR LIFE'S BUMPY ROADS.

**RIDE AND HANDLING.** Virtually every system for this convertible has been engineered for an exceptional performance experience. MacPherson struts sit up front to provide an optimum balance of ride, handling, and noise isolation. These are supported by multilink coils in the back, which allow individual articulation of the rear wheels over varying road surfaces for a level ride. Additional components include large-diameter front and rear sway bars, stiffened body mounts and soft ride rate, all paving the way for a smooth and controlled ride. These drivetrain and suspension enhancements also contribute to the reduction of noise, vibration, and harshness (NVH), while the premium 17- and 18-inch Touring tires provide solid balance and response.

**AUTOSTICK.** Paired with either the 2.4L four-cylinder engine or the available 3.6L Pentastar® V6 engine, the six-speed automatic transmission with standard AutoStick shifter allows clutchless manual or automatic gear selection for a dynamic driving experience.

**TAKE NOTICE.** The Chrysler grille and wing badge glimmer as sculpted front and rear fascias and aluminum wheels boast a fresh perspective from the onset. The standard body-color door handles and power heated mirrors streamline its presence while available brightwork gives a finish fit for its looks. Standard bifunctional halogen projector headlamps provide a wide, clear night vision with high/low beam capability and outstanding forward and spread-light performance. LED light piping accents the headlamps' premium appearance and illumination. The available projector beam fog lamps provide sharp visibility and looks, while the LED taillamps and center-mounted stoplamp's intense illumination means viewers take notice from every angle.



*Chrysler 200 S Convertible Shown in Billet Silver Metallic.*



ANTILOCK BRAKE SYSTEM/ABS. Standard four-wheel antilock disc brakes afford premium stopping power from state-of-the-art electronics that provide faster system response. ABS senses and prevents wheel lock-up, offering improved steering control under extreme braking and/or slippery conditions.

SENTRY KEY® THEFT DETERRENT SYSTEM. A unique security system code matched only to your vehicle allows your 200 Convertible to start only with the special encoded key.

SECURITY ALARM. This system monitors the door-ajar and trunk switches as well as the ignition circuit for unauthorized entry. The lights flash and the horn sounds, alerting you if someone else is trying to enter your vehicle.

REMOTE KEYLESS/ILLUMINATED ENTRY. For additional convenience and security, this feature unlocks the driver's door on the first press of the key fob and all doors on the second press, lighting the interior once the vehicle is unlocked.

ELECTRONIC STABILITY CONTROL (ESC).<sup>5</sup> In adverse conditions, ESC and Brake Assist work with an all-speed traction control system to help maintain vehicle stability, limit oversteering or understeering, and automatically apply brake force when needed.

AIR BAGS.<sup>6</sup> All 200 Convertible models feature standard advanced multistage driver and front-passenger air bags,<sup>6</sup> and supplemental driver and front-passenger-seat mounted air bags.<sup>6</sup>

ACTIVE FRONT HEAD RESTRAINTS.<sup>7</sup> Head restraints automatically move forward and upward in the event of a rear-end collision to decrease the space between the head restraint and the occupant's head, helping to reduce the chance of injury.

TIRE PRESSURE MONITORING SYSTEM. A warning lamp in the instrument cluster notifies you of low tire pressure. A Tire Pressure Monitoring Display alerts you to individual tire pressure for all four tires and is part of the available Electronic Vehicle Information Center (EVIC).

SPECIFICALLY DESIGNED FRONT AND REAR CRUMPLE ZONES HELP ABSORB ENERGY AND REDIRECT IT AWAY FROM PASSENGERS.

BUILT WITH A LEVEL OF CONFIDENCE  
STAMPED IN STEEL.

THEY HELP TO REDUCE THE RISK OF INJURY IN THE EVENT OF A COLLISION.





**MAKE IT YOURS.**  
AUTHENTIC CHRYSLER  
ACCESSORIES BY MOPAR.

WITH YOU EVERY MILE. Mopar® is with you from the moment you take possession of your new Chrysler 200 Convertible and for every mile thereafter. It helps to further your vehicle's distinction with accessories of every kind. They are designed by the same engineers of your vehicle and made specifically for your model. It's get-it-right-the-first-time satisfaction with seamless fit and finish, exact color matches, and high-quality materials that have been thoroughly tested.

Mopar also assures you with expert technicians who know your make and model best from Vehicle Protection Plans and Express Lane Service to Mopar Owner Connect, a secure owners-only site, accessible by registering at [owners.chrysler.com](http://owners.chrysler.com). There, you'll enjoy online access to service records, extensive vehicle information, and much more. Learn more about the world of Mopar and all it has to offer at [mopar.com](http://mopar.com). See your Chrysler dealer for the latest accessories and parts available.



(Left to right, top to bottom) Illuminated Door Sill Guards – Hitch-Mount Bike Carrier – Katzkin® Leather Interiors – Ambient Light Kit – KICKER® Sound Systems – Uconnect Web.<sup>4</sup>



# OPTIONS AND PACKAGES

	Touring	Limited	“S”
<b>ENGINE/TRANSMISSION</b>			
<b>2.4L I-4 16V DOHC VVT WORLD ENGINE</b> – 6-speed automatic	29V		
<b>3.6L FLEX FUEL VVT V6</b> – 6-speed automatic	27V	27W	27S
<b>MECHANICAL</b>			
<b>ALTERNATOR</b> – 140-amp	S		
– 160-amp (included with 3.6L V6 engine)	O	S	S
<b>BATTERY</b> – 525-amp, maintenance-free	S	S	S
<b>BRAKE/PARK INTERLOCK</b> – Included with 6-speed automatic	S	S	S
<b>BRAKES</b> – Four-wheel disc ABS	S	S	S
<b>ENGINE BLOCK HEATER</b>	O	O	O
<b>REMOTE START SYSTEM</b> – Included with Cold Weather Group	P	S	S
<b>SPEED CONTROL</b> – Electronic with stalk-mounted controls	S	S	S
<b>SPEEDOMETER</b> – 120-mph, with tachometer	S	S	S
<b>STABILIZER BARS</b> – Front and rear	S	S	S
<b>STEERING</b> – Precision power	S	S	S
<b>SUSPENSION</b> – Tuned	S	S	S
<b>EXTERIOR FEATURES</b>			
<b>ANTENNA</b> – Removable short mast	S	S	S
<b>DOOR HANDLES</b> – Body-color	S		S
– Bright		S	
<b>EXHAUST TIPS</b> – Dual, bright (included with 3.6L V6 engine)	P	S	S
<b>FOG LAMPS – PROJECTOR</b>		S	S
<b>FUEL TANK</b> – 16.9-gallon	S	S	S
<b>GLASS</b> – Tinted	S	S	S
– Acoustic windshield	S	S	S
<b>GRILLE</b> – Dark Argent with bright accents	S	S	
– Black S grille finish			S
<b>HARD TONNEAU COVER</b>	S	S	S
<b>HEADLAMPS</b> – Bifunctional halogen projector with headlamps-off time-delay feature	S	S	S
– Automatic headlamps	S	S	S
– Headlamps with Black treatment			S
<b>HOOD INSULATION</b>	S	S	S
<b>MIRRORS</b> – Foldaway	S	S	S
– Power, heated, body-color	S		S
– Power, heated, bright		S	
<b>TIRES</b> – P225/55R17 BSW All-Season Touring	S		
– P225/50R18 BSW All-Season Touring		S	S
– Compact spare	S	S	S
<b>TOPS</b> – Power, cloth with remote top-down on key fob	S	S	S
– Power, retractable hardtop with remote top-down on key fob		O	O
<b>TRUNK LID POWER RELEASE</b>	S	S	S
<b>WHEELS</b> – 17-inch machined cast aluminum	S		
– 18-inch polished aluminum		S	
– 18-inch polished aluminum wheel with Black painted pockets			S
– 18-inch cast aluminum with painted satin Silver finish	O		
<b>WINDSHIELD WIPERS</b> – Variable intermittent	S	S	S
<b>INTERIOR FEATURES</b>			
<b>AIR CONDITIONING WITH AUTOMATIC TEMPERATURE CONTROL</b>	S	S	S
<b>AIR FILTRATION SYSTEM</b>	S	S	S
<b>ANALOG CLOCK</b>	S	S	S
<b>CONSOLE</b> – Floor with fore/aft sliding armrest, with dual storage compartments	S	S	S
<b>DEFROSTER</b> – Rear window	S	S	S
<b>DOOR LOCKS</b> – Power	S	S	S

	Touring	Limited	“S”
<b>INTERIOR FEATURES (Continued)</b>			
<b>DOOR SILL SCUFF PADS</b> – Black	S		S
– Silver		S	
<b>INSTRUMENT CLUSTER</b> – With LED lighting and display screen	S	S	S
<b>FLOOR MATS</b> – Luxury front and rear	S	S	S
<b>GLOVEBOX</b> – Locking	S	S	S
<b>HOMELINK® UNIVERSAL GARAGE DOOR OPENER</b>	S	S	S
<b>MIRRORS</b> – Rearview, day/night with reading lamps	S		
– Rearview, auto-dimming with microphone (included with Uconnect® Phone)	P	S	S
– Visor/vanity mirror	S	S	S
<b>POWER TOP- AND WINDOWS-DOWN WITH KEY FOB</b>	S	S	S
<b>STEERING WHEEL</b> – Leather-wrapped	S	S	
– Perforated leather			S
– Audio controls	S	S	S
<b>TEMPERATURE AND COMPASS GAUGE</b>	S	S	S
<b>WINDOWS</b> – Power, driver and front-passenger with one-touch down	S	S	S
<b>SEATING</b>			
– Premium cloth bucket seats	S	O	
– Premium leather-trimmed bucket seats		S	
– Premium leather-trimmed bucket seats with digital suede			S
– Power 6-way driver and front-passenger seats	S	S	S
– Heated (included with Cold Weather Group)	P	S	S
– Manual driver lumbar adjuster	S	S	S
<b>UCONNECT®</b>			
– Uconnect 130 AM/FM radio with CD/MP3 format capability, audio jack, and steering wheel music controls. Optional: Uconnect Voice Command with Bluetooth, <sup>1</sup> Bluetooth streaming audio, USB port for media devices, and SiriusXM Satellite Radio <sup>2</sup> with one-year trial included.	S		
– Uconnect 430 AM/FM radio with CD/DVD/MP3 format capability, audio jack, and 40GB HDD (28GB available) with USB port for uploading files, 6.5-inch touch screen for displaying music info and uploaded pictures, steering wheel music controls, Uconnect Voice Command with Bluetooth, Bluetooth streaming audio, additional USB port for media devices, SiriusXM Satellite Radio <sup>2</sup> with one-year trial included.	O	S	S
– Uconnect 730N AM/FM radio with CD/DVD /MP3 format capability, audio jack, 40GB HDD (20GB available) with USB port for uploading files, Uconnect Voice Command with Bluetooth, Bluetooth streaming audio, and additional USB port for media devices, 6.5-inch touch screen for displaying music info and uploaded pictures, steering wheel music controls, enhanced GPS Navigation, SiriusXM Satellite Radio, <sup>2</sup> Travel Link, and Traffic, with one-year trial included.		O	O
– SiriusXM Satellite Radio <sup>2</sup> system with one-year subscription	S	S	S
<b>SOUND SYSTEMS</b> – Six speakers	S	S	
– Six Boston Acoustics® speakers		O	S
<b>SAFETY AND SECURITY</b>			
<b>ACTIVE HEAD RESTRAINTS<sup>7</sup></b> –Front	S	S	S
<b>AIR BAGS<sup>8</sup></b> – Front advanced multistage driver and passenger	S	S	S
– Supplemental front seat-mounted	S	S	S
<b>CHILD SEAT ANCHOR SYSTEM (LATCH)</b>	S	S	S
<b>ELECTRONIC STABILITY CONTROL<sup>9</sup></b> – With Brake Assist and all-speed traction control	S	S	S
<b>INSIDE EMERGENCY TRUNK LID RELEASE</b>	S	S	S
<b>REMOTE KEYLESS/ILLUMINATED ENTRY</b>	S	S	S
<b>SEAT BELTS</b> – Front three-point with shoulder adjustment	S	S	S
– Rear, outboard	S	S	S
<b>SECURITY ALARM</b>	S	S	S
<b>SENTRY KEY® THEFT DETERRENT SYSTEM</b>	S	S	S
<b>TIRE PRESSURE MONITORING SYSTEM</b> – Included in the traveler/mini trip computer, displays individual tire pressure for all four tires	S	S	S
<b>UCONNECT® PHONE</b> – Includes Voice Command and rearview auto-dimming mirror with microphone, remote USB port, Bluetooth streaming audio	O	S	S
<b>PACKAGES</b>			
<b>COLD WEATHER GROUP</b> – Includes heated front seats and remote start	O		
<b>SMOKER'S GROUP</b> – Removable ashtray, cigar lighter	O	O	O

S = Standard, O = Optional, P = Included as part of package.





17-INCH MACHINE CAST ALUMINUM WHEEL  
Standard on Touring.



18-INCH POLISHED ALUMINUM WHEEL WITH BLACK  
PAINTED POCKETS Standard on S.



18-INCH CAST ALUMINUM WHEEL WITH PAINTED  
SATIN SILVER FINISH Optional on Touring.



18-INCH POLISHED ALUMINUM WHEEL Standard on Limited.

## THE CHRYSLER COLLECTION

Bring the Chrysler brand style and distinction to your lifestyle in and out of your vehicle with authentic professional, active, travel, and home accessories, apparel, and gift cards for your favorite Chrysler enthusiast. You'll also wear your pride-of-ownership attitude on your sleeve when you boast one of the popular Imported From Detroit® garments. Shop the complete collection to show you know what earned luxury is all about at [Chrysler.com/collection](http://Chrysler.com/collection).



### WARRANTIES

Chrysler vehicles are covered by a Chrysler Group LLC 3-Year or 36,000-Mile Basic Limited Warranty (excludes normal maintenance and wear items), as well as a 5-Year or 100,000-Mile Powertrain Limited Warranty that is fully transferable and includes Roadside Assistance Services: Flat Tire, Lockout, Towing, Out of Gas/Fuel Delivery, and Battery Jump Assistance. Ask your dealer for details and a copy of these limited warranties.

### AUTHENTIC CHRYSLER ACCESSORIES BY MOPAR.

Are designed specifically for your Chrysler vehicle for exceptional fit, finish, and performance. Visit your dealership or [mopar.com](http://mopar.com).

### AUTOMOBILITY

Chrysler Group LLC's Automobility Program provides aftermarket reimbursement incentives on adaptive vehicle upfit equipment in order to help provide safe and reliable vehicle modifications to enhance accessibility for all people. For more information, call (800) 255-9877 or visit [chryslerautomobility.com](http://chryslerautomobility.com).

### SiriusXM SATELLITE RADIO

SiriusXM Satellite Radio<sup>2</sup> delivers over 130 channels, including commercial-free music, sports, news, talk, entertainment, traffic, and weather. Factory-installed SiriusXM Satellite Radio includes a one-year subscription. For more information, go to [siriusxm.com](http://siriusxm.com).

### UCONNECT<sup>3</sup>

With Uconnect, you're always connected – to people, places, music, movies, and the Internet.






Earn 3 points on qualifying purchases made at Chrysler Group LLC dealerships, 2 points per \$1 on qualifying travel purchases, and 1 point per \$1 on qualifying purchases everywhere else with the new Chrysler MasterCard.<sup>®</sup> Points may be redeemed at your local dealership for cash off your new or used vehicle, accessories, parts, or service – including your next oil change. Or choose from hundreds of other rewards, including travel, cash back to your account, merchandise, or gift cards.<sup>®</sup> For more information or to apply, visit [ChryslerCard.com](http://ChryslerCard.com).


### CHRYSLER SERVICE CONTRACTS

Chrysler Group LLC has a vested interest in your satisfaction and owner experience with your new Chrysler vehicle. Chrysler Group Service Contracts offer extended service plans to help ensure that you'll enjoy your vehicle for many years down the road – for just pennies a day. For more information on comprehensive vehicle coverage, see your Chrysler dealer, call (800) 442-2666, or visit [chrysler.com/csc](http://chrysler.com/csc).

### JOIN IN

   Join fellow enthusiasts and tell your story by posting comments, participating in discussions, and sharing your Chrysler vehicle photos and videos. Join our community on Facebook ([facebook.com/Chrysler](http://facebook.com/Chrysler)), follow us on Twitter ([twitter.com/Chrysler](http://twitter.com/Chrysler)), and check us out on YouTube ([youtube.com/TheChryslerChannel](http://youtube.com/TheChryslerChannel)). Thank you for following.

### GO MOBILE

 Take an engaging, multimedia tour of your vehicle on your mobile device. Visit Chrysler Group LLC in iTunes<sup>®</sup> from your smartphone or iPad<sup>®</sup> to download the most up-to-date apps on all of the company's vehicles. Log on to the [Chrysler.com](http://Chrysler.com) mobile site for a comprehensive, at-a-glance review of what you need to know about your Chrysler vehicle. Experience visual and interactive demonstrations of the entire lineup, gaining access to product information at your fingertips, wherever you go.

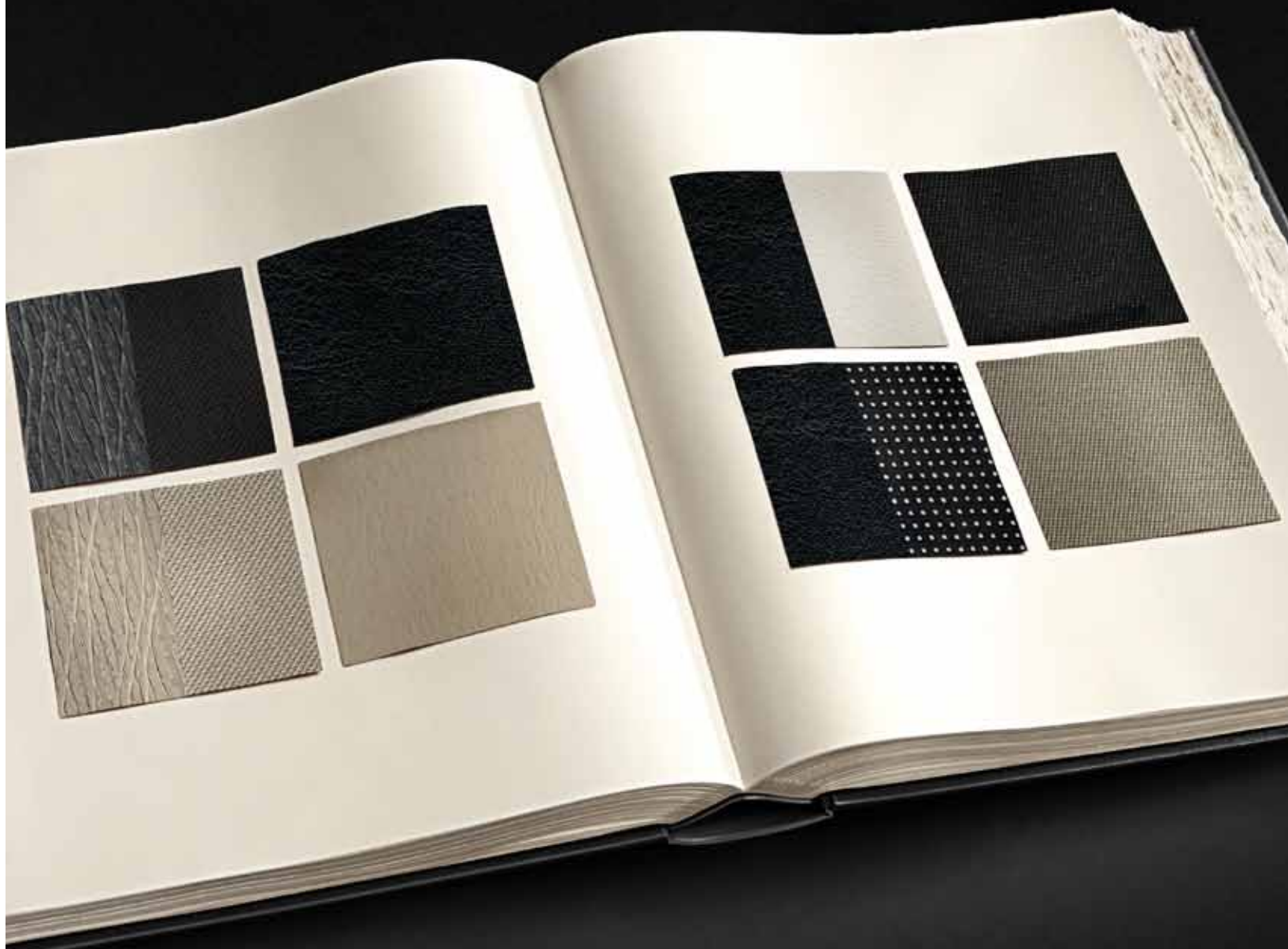


(1)Based on latest available information of Chrysler Group LLC Standard Mid-Size Sedan segment. (2)SiriusXM service requires a subscription, sold separately, after 12-month trial included with vehicle purchase. If you decide to continue your SiriusXM service at the end of the trial subscription, the plan you choose will automatically renew and bill at the current rates until you call SiriusXM at 1-866-635-2349 to cancel. See our Customer Agreement for complete terms at [www.siriusxm.com](http://www.siriusxm.com). Sirius satellite service is available only to those at least 18 and older in the 48 contiguous United States, D.C., and P.R. (with coverage limitations). SiriusXM Traffic available in select markets. See [siriusxm.com/traffic](http://siriusxm.com/traffic) for more information. Sirius, XM and all related marks and logos are trademarks of Sirius XM Radio Inc. (3)Phone must support Bluetooth Phone Book Access Profile (PBAP). (4)Uconnect Web feature is not intended for use by the driver while the vehicle is in motion. Always drive carefully. Subscription required. (5)No system, no matter how sophisticated, can repeal the laws of physics or overcome careless driving actions. Performance is limited by available traction, which snow, ice, and other conditions can affect. When the ESC warning lamp flashes, the driver needs to use less throttle and adapt speed and driving behavior to prevailing road conditions. Always drive carefully, consistent with conditions. Always wear your seat belt. (6)The Advanced Front Air Bags in this vehicle are certified to the new U.S. federal regulations for advanced air bags. Children 12 years old and younger should always ride buckled up in a rear seat. Infants in rear-facing child restraints should never ride in the front seat of a vehicle with a passenger front air bag. All occupants should always wear their lap and shoulder belts properly. (7)Always sit properly with the head restraint properly adjusted. Never place anything in front of the head restraint. (8) Complete details, including restrictions, limitations, and exclusions, will be available when you become a Cardmember. MasterCard is a registered trademark of MasterCard International Incorporated. This card is issued by First Bankcard, a division of First National Bank of Omaha, pursuant to a license by MasterCard International Incorporated.

This brochure is a publication of Chrysler Group LLC. All product illustrations and specifications are based upon current information at the time of publication approval. Chrysler Group LLC reserves the right to make changes from time to time, without notice or obligation, in prices, specifications, colors, materials and to change or discontinue models, which are considered necessary to the purpose of product improvement or for reasons of design and/or marketing. Chrysler, Chrysler 200S, the Chrysler wing design, Imported from Detroit, Mopar, Pentastar, Sentry Key and Uconnect are registered trademarks of Chrysler Group LLC. Bluetooth is a registered trademark of Bluetooth SIG, Inc. Boston Acoustics is a registered trademark of Boston Acoustics, Inc. Facebook is a registered trademark of Facebook, Inc. HomeLink is a registered trademark owned by Johnson Controls, Inc. iPod, iPad, and iTunes are registered trademarks of Apple Inc. Katzin is a registered trademark of Katzin Leather Interiors, Inc. KICKER is a registered trademark of Stillwater Design and Audio, Inc. MasterCard is a registered trademark of MasterCard International Incorporated. This card is issued by First Bankcard, a division of First National Bank of Omaha, pursuant to a license by MasterCard International Incorporated. NASCAR is a registered trademark of the National Association for Stock Car Auto Racing, Inc. NFL is a registered trademark of the National Football League. Sirius, XM and all related marks and logos are trademarks of SiriusXM Radio Inc. and its subsidiaries. The Twitter name, logo, Twitter T, Tweet, and Twitter bird are trademarks of Twitter, Inc. in the United States and other countries. YouTube is a registered trademark of Google Inc.



INTERIOR COLORS



*BROOK AND WILLOW CLOTH*  
Black  
Light Frost

*ROYALE LEATHER TRIM*  
Black  
Light Frost

*BLACK / PEARL ROYALE LEATHER TRIM*  
  
*BLACK ROYALE LEATHER/ DIGITAL SUEDE INSERTS*

*CLOTH*  
Black  
Pebble



EXTERIOR COLORS

*(Left to right, top to bottom) CASHMERE PEARL\* – BLACK – CRYSTAL BLUE PEARL\* – DEEP CHERRY RED CRYSTAL PEARL\* – DEEP AUBURN PEARL\* – TUNGSTEN METALLIC – TRUE BLUE PEARL\* – BRIGHT WHITE – BILLET SILVER METALLIC*

\* Not available with S Packages. \*Late availability.





BLACK

TUNGSTEN METALLIC

BILLET SILVER METALLIC

TRUE BLUE PEARL\*

CRYSTAL BLUE PEARL\*

DEEP CHERRY RED CRYSTAL PEARL†

DEEP AUBURN PEARL\*

CASHMERE PEARL\*

BRIGHT WHITE





200 S Convertible Shown in Billet Silver Metallic.



