

STANDARD

SPECIFICATION



A carefully designed specification ensures the driver has exactly what they need whilst encapsulating all of Morgan's time proven DNA. The attractive themes apparent in the classic range of the Morgan Sport series forms the basis for these vehicles. The Morgan 3 Wheeler is available in 8 sport colours*, with gloss black detailing, and a choice of black or tan leather. The standard specification is as follows:

- | | | |
|------------------------------|---|--|
| » Weight: 500kg (Est.) | » Choice of 8 sport colours | » Choice of black or tan leather |
| » Power: 115bhp (Est.) | » Gloss black wheel arches and lamps | » Leather seats, dash and elbow pads |
| » Top Speed: 115mph (Est.) | » Gloss black wire wheels | » Exposed tubular black chassis |
| » 0-60 : 4.5 seconds (Est.) | » Matt black exhausts + gloss heat shield | » Leather and alloy steering wheel |
| » Engine: 1910cc 'V twin' | » Nickel coloured cowl | » Black anodized dash panel |
| » Gearbox: 5 speed + reverse | » Le Mans filler cap | » Aluminium 'aircraft' toggle switches |
| » Aluminium body | » Gloss black roll hoops | » Body colour interior trim panels |
| » U.S. and EU approval | » Twin flyscreens | » 'Bomb release' style start button |



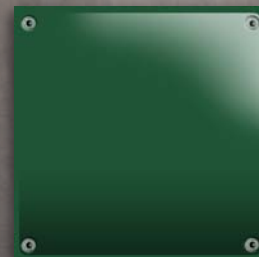
Sport Black



Sport Blue



Sport Grey



Sport Green



Tan Leather



Sport White



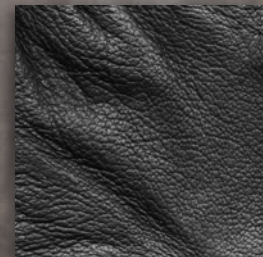
Sport Teal



Sport Sand



Sport Red



Black Leather

'Bespoke' series options and 'graphics packs' for the Morgan 3 Wheeler are available, as cost options. For more information or prices please contact your local dealer or visit www.morgan3wheeler.co.uk



www.morgan3wheeler.co.uk

*All Colours are printed representations. **All specification details correct at time of print.



THE MORGAN 3 WHEELER



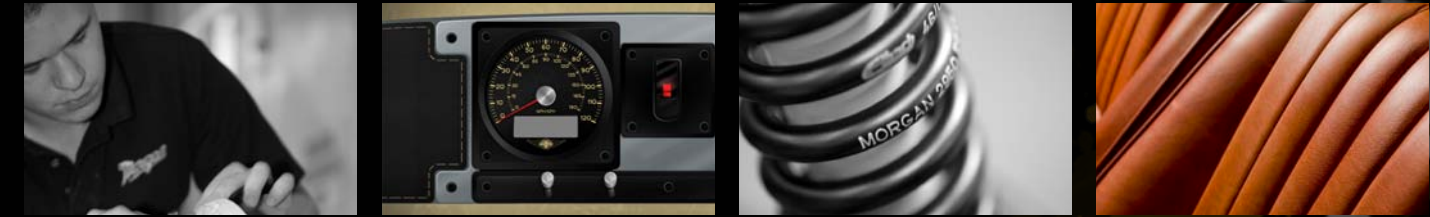
THE MORGAN 3 WHEELER

When did you last regard a journey by motor car as an adventure? The Morgan 3 Wheeler is launched to bring the fun and passion back to personal transport. Lift the safety catch from the "bomb release" starter button, hear the massive twin cylinders detonate and choose your favourite destination.

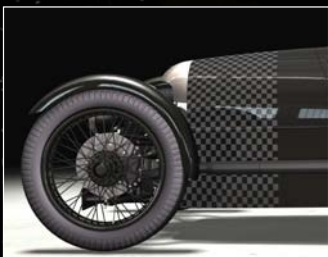
The iconic design of the Morgan Threewheeler has been updated with 21st Century technology. The powertrain is a 1910cc 'V-twin' fuel injected engine mated to a Mazda 5 speed (and reverse) gearbox. This provides smooth "get in and drive" convenience with the thrill of extreme performance.

Some things have not changed. Why change the shape when the Morgan Threewheeler still holds long distance speed records for one litre cars set in the 1930's? The pronounced aluminium bullet hull and the exposed tubular chassis are accompanied by the aeroplane profile of the car's sides. The shape is of a gentle yet powerful missile at the front leading to a beetle back tail at the rear. From the design viewpoint, the focus was set on making the car as close to an aeroplane as possible, while retaining handy extra space for driver, passenger and a holdall in the rear.

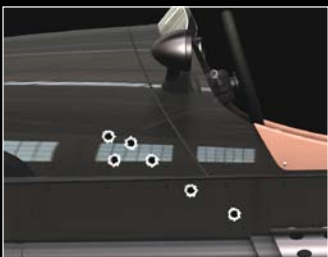
The Morgan 3 Wheeler is designed for one purpose alone, to make driving fun. A leather padded cockpit complete with aircraft instrumentation adds to the sense of flying on the road. The car seems to respond as much to thought as physical input. With an estimated 115 horsepower the motor provides maximum power at minimum revs. When coupled with a weight of less than 500kgs the 21st century Morgan 3 Wheeler provides unrivalled power to weight for it's on the road price. The time is right for Morgan to take a new look at the combination of acceleration, performance and economy. The time is right for Morgan to relaunch the 3 Wheeler.



GRAPHICS PACKS



Checkered winners bonnet



Combat bullet wounds



Morgan 3 Wheeler logo



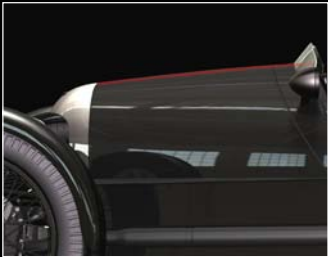
3 Wheeler garage stencil



UK / US. Small national flag



Racing Roundel (black or white)



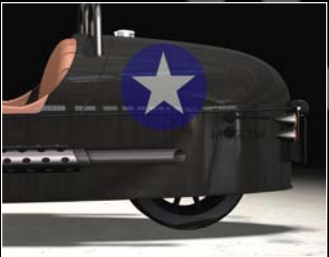
Racing Stripe



British Airforce 'MOG'



Shark nose



US. Military inspired

As an addition to the standard 'Sport' or 'Bespoke' vehicle, we are offering a range of 'graphic packs'. Authentically styled wraps can be applied professionally to the body of your car. The wraps are durable yet removable. For more details and pricing please contact your local dealer or visit www.morgan3wheeler.co.uk.



OPTIONAL EXTRAS



BESPOKE SPECIFICATION OPTIONS



'Bespoke' is the choice of any paint or leather from our current range. For a more classic look polished and alloy components can be specified as cost options. When combined with the graphics packs overleaf your Morgan 3 Wheeler can be unique. For more information please contact your local dealer or visit www.morgan3wheeler.co.uk



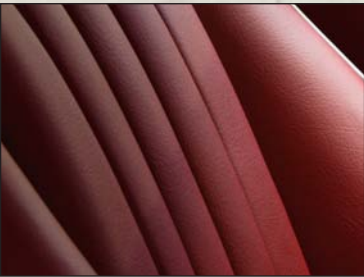
Polished exhaust



Polished engine



Any paint option



Any leather option



Polished cowl



Polished lamps



Polished roll over hoops