

2013   
DODGE DURANGO





DURANGO CITADEL SHOWN IN DEEP CHERRY RED CRYSTAL PEARL.





BUILT TO ACCOMMODATE SEVEN PASSENGERS AND ABSOLUTELY NEVER COMPROMISE — ESPECIALLY WHEN IT COMES TO TECHNOLOGY, COMFORT, STYLE, AND CAPABILITY. IT DIRECTS ITS ENERGY THROUGH POWERFUL ENGINE OPTIONS AND A FOUR-WHEEL INDEPENDENT MULTILINK SUSPENSION, ALL WHILE DELIVERING UNSURPASSED<sup>[1]\*</sup> AVAILABLE V8 FUEL EFFICIENCY. WHEN PUSH COMES TO SHOVE, THIS SUV IS ALL-IN WITH ENOUGH BEST-IN-CLASS<sup>[2]</sup> AVAILABLE HORSEPOWER TO PULL A BEST-IN-CLASS<sup>[3]</sup> TOWING RATING. THIS IS THE 2013 DODGE DURANGO. AND IT MAKES NO APOLOGIES.

---

BEST-IN-CLASS<sup>[2]</sup> AVAILABLE POWER — UP TO 360 HORSEPOWER AND 390 LB-FT OF TORQUE // BEST-IN-CLASS<sup>[4]</sup> V6 HIGHWAY DRIVING RANGE — OVER 550 MILES // BEST-IN-CLASS<sup>[3]</sup> TOWING — UP TO 7,400 LB // STANDARD SEATING FOR SEVEN ADULTS // PREMIUM SOFT-TOUCH INTERIOR // SECOND-ROW CAPTAIN'S CHAIRS AVAILABLE ON ALL MODELS // NEW PREMIUM VENTILATED NAPPA LEATHER TRIM AVAILABLE ON R/T // AWARD-WINNING 3.6L PENTASTAR® V6 ENGINE // NEW RALLYE APPEARANCE GROUP // NEW BLACKTOP PACKAGE // DURANGO — A 2012 INSURANCE INSTITUTE FOR HIGHWAY SAFETY (IIHS) TOP SAFETY PICK

\* A NOTE ABOUT THIS BROCHURE: ALL DISCLAIMERS AND DISCLOSURES CAN BE FOUND ON THE LAST PAGE.




DURANGO CITADEL SHOWN IN BRILLIANT BLACK CRYSTAL PEARL.



DISTINCTIVELY DESIGNED.

---



---

FROM A SCULPTED BODY THAT ANNOUNCES ITS ATHLETICISM TO A SPLIT CROSSHAIR GRILLE THAT PROJECTS ATTITUDE, DURANGO MOVES THROUGH THE STREETS WITH CONFIDENCE. AN INTEGRATED REAR SPOILER, AVAILABLE 20-INCH CHROME-CLAD ALUMINUM WHEELS, AND AVAILABLE DUAL BRIGHT EXHAUST TIPS DON'T LET YOU FORGET THIS SUV IS ALL ABOUT PERFORMANCE. STANDARD ON R/T AND CITADEL MODELS, HIGH INTENSITY DISCHARGE (HID) HEADLAMPS WITH AUTO-LEVELING OFFER A CUSTOM FIT-AND-FINISH APPEARANCE. CITADEL MODELS FEATURE HID HEADLAMPS EQUIPPED WITH AUTO HIGH-BEAM HEADLAMP CONTROL, WHICH AUTOMATICALLY ADJUSTS HIGH-BEAM BRIGHTNESS AND INTENSITY TO MAXIMIZE NIGHT VISION.

---

CAPABLE OF CARRYING UP TO 150 POUNDS OF CARGO, THE AVAILABLE ROOF RACK FEATURES BRIGHT SIDE RAILS AND INTEGRATED STOWABLE CROSSBARS. WHEN NOT IN USE, THE CROSSBARS FOLD DOWN INTO THE SIDE RAILS FOR GREATER AERODYNAMIC PERFORMANCE AND REDUCED WIND NOISE. FEATURES LIKE SPECIALLY HARDENED STEEL DOOR OUTER PANELS HELP WARD OFF DENTS WHILE LAMINATED FRONT SAFETY GLASS AND THOUSANDS OF BODY WELDS FURTHER DURANGO'S REPUTATION AS THE STRONG AND SILENT TYPE.





INTERIOR FEATURES.



DODGE DURANGO CREW SHOWN WITH STANDARD BLACK LEATHER-TRIMMED INTERIOR.

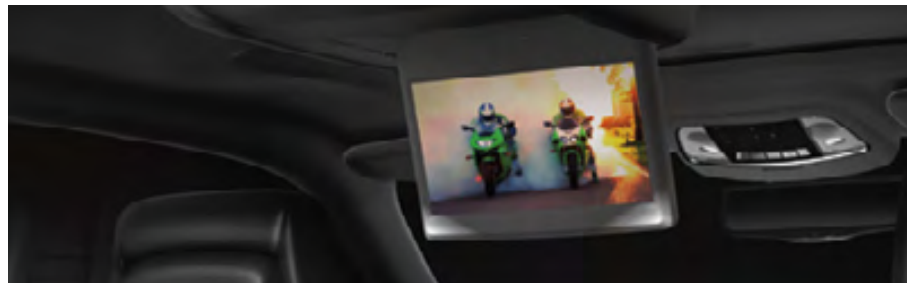


---

***BEAUTIFULLY ACCOMMODATING.*** IF DURANGO'S EXTERIOR IS AN EXERCISE IN ATHLETICISM, THEN ITS INTERIOR CAN BE CATEGORIZED AS A DISPLAY OF INDULGENCE. SAPPHIRE BLUE LED LIGHTING ILLUMINATES FRONT-DOOR STORAGE POCKETS AND DOOR HANDLE RECESSES. HIGH-END SOFT-TOUCH MATERIALS, CHROME AND WOODGRAIN ACCENTS, THE CONVENIENCE OF STANDARD AUTOMATIC THREE-ZONE TEMPERATURE CONTROL, AND AVAILABLE POWER-ADJUSTABLE STEERING COLUMN WITH MEMORY ADD A HIGH LEVEL OF COMFORT AND REFINEMENT TO THE INTERIOR. AVAILABLE HEATED AND VENTILATED SEATS AFFORD DRIVER AND FRONT-SEAT PASSENGER ALL-SEASON COMFORT. SELECT BETWEEN HIGH AND LOW HEAT SETTINGS OR ACTIVATE VENTILATED SEATS THAT DRAW AIR THROUGH SMALL FANS LOCATED IN THE SEATBACK TO HELP COOL THE SEATING SURFACE. OPT FOR THE FULL-CIRCUMFERENCE HEATED STEERING WHEEL AND HANDS WILL STAY WARM ON EVEN THE CHILLIEST OF DAYS.

---

***NEVER A DULL MOMENT.*** WHEN IT COMES TO TECH, DURANGO HAS WHAT IT TAKES TO TAKE IT WITH YOU. CONNECT MULTIMEDIA DEVICES AND GAMING CONSOLES VIA THE AUXILIARY INPUT JACK ON THE AVAILABLE REAR DVD ENTERTAINMENT CENTER. STREAM LIVE MUSIC FROM A COMPATIBLE STORAGE DEVICE WHEN DURANGO IS OUTFITTED WITH A REMOTE USB PORT. AND WITH BLUETOOTH® STREAMING AUDIO, UP TO SEVEN BLUETOOTH ENABLED MEDIA PLAYERS CAN CONTRIBUTE TO THE PLAYLIST. OPT FOR THE AVAILABLE ALPINE® PREMIUM SOUND SYSTEM AND ENJOY NINE SPEAKERS AND A SUBWOOFER. WITH AVAILABLE UCONNECT® WEB<sup>[5]</sup> FROM MOPAR®, DURANGO BECOMES A MOBILE HOTSPOT THAT CAN ACCOMMODATE MULTIPLE WIFI-ENABLED DEVICES. THERE'S NO NEED FOR CELL CARDS OR SOFTWARE; IT'S ALL WIRELESS.



*BEING FLEXIBLE IS IN OUR DNA.* YOU CAN'T HAVE AN INTERIOR THAT OFFERS UP TO 84.5 CU FT OF INTERIOR CARGO SPACE OR THAT'S CAPABLE OF HANDLING UP TO 50 POSSIBLE SEATING CONFIGURATIONS WITHOUT BEING FLEXIBLE, VERSATILE, AND ADAPTABLE. DEPENDING ON WHICH MODEL YOU CHOOSE, DURANGO OFFERS THREE ROWS FOR SIX- OR SEVEN-PASSENGER SEATING WITH ERGONOMIC DESIGN, FRONT DUAL-FIRMNESS CUSHIONING, AND TUNED SPRING SUSPENSION. STANDARD SEVEN-PASSENGER SEATING INCLUDES A FOLD-FLAT FRONT-PASSENGER SEAT, 60/40 SPLIT-FOLD-FLAT SECOND-ROW RECLINING BENCH SEATS WITH INTEGRATED PADDED CENTER ARMREST WITH CUP HOLDERS, AND 50/50 SPLIT-FOLDING THIRD-ROW SEATS. OR OPT FOR CLOTH OR HEATED LEATHER-TRIMMED FOLD-FLAT SECOND-ROW CAPTAIN'S CHAIRS WITH SOFT-TOUCH ARMRESTS AND FLOOR-MOUNTED MINI CONSOLE WITH CUP HOLDERS. AN AVAILABLE SECOND-ROW CENTER CONSOLE WITH ACCENT STITCHING BOASTS FOUR DIFFERENT STORAGE AREAS, TWO ILLUMINATED CUP HOLDERS, A 12-VOLT POWER OUTLET, AND USB PORT FOR VIDEO GAME, PERSONAL DVD PLAYER, AND SMARTPHONE CHARGING. CARGO WON'T FEEL THE CRUSH, THANKS TO A SPACIOUS 47.7 CU FT OF VOLUME BEHIND THE SECOND ROW WHEN THE THIRD ROW IS FOLDED. WHEN HAULING LONGER LOADS, SIMPLY FOLD THE FRONT-PASSENGER AND REAR SEATS FLAT.\* \*EXCLUDES PREMIUM NAPPA LEATHER-TRIMMED SEATING.



PROPERLY SECURE ALL CARGO.





DURANGO CITADEL SHOWN WITH LIGHT FROST BEIGE NAPPA LEATHER-TRIMMED INTERIOR AND AVAILABLE SECOND-ROW FOLD-AND-TUMBLE CAPTAIN'S CHAIRS.



UP TO 50 DIFFERENT SEATING  
CONFIGURATIONS.



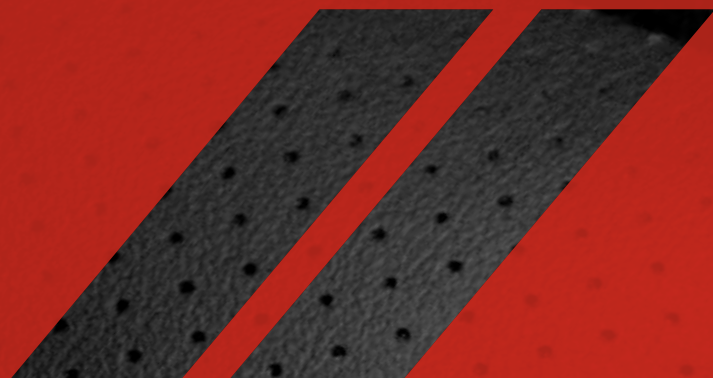
PROPERLY SECURE ALL CARGO.



WHY SO MANY SEATING CONFIGURATIONS? THE ANSWER IS SIMPLE: DODGE DOESN'T BELIEVE IN A ONE-SIZE-FITS-ALL INTERIOR. WHO AND WHAT YOU NEED TO TAKE TODAY WILL NOT BE THE SAME TOMORROW. ON THAT PRINCIPLE, DURANGO'S ENGINEERS DESIGNED A FLUID INTERIOR MADE TO MOVE RIGHT ALONG WITH YOUR EVER-CHANGING LIFESTYLE.

PROPERLY SECURE ALL CARGO.





DEDICATED TO DETAILS.









OPEN  
CLOSE

SEEK  
▲

SEEK  
▼

RADIO  
MEDIA

VOLUME



PULL ON



SIRIUS Travel Link



Favorites



Forecast



Ski Info



NAV



Movie Times



Sports



Fuel Prices

3:43

SAT 107

MP3 - WMA - JPEG

SIRIUS

EXIT

HARD DISC DRIVE

AUX



PULL

RHR

A/C

68

FRONT

REAR OFF

72

SYNC

AUTO

FRONT



# WELL-CONNECTED

ENGINEERED WITH TECHNOLOGY, DURANGO AND UCONNECT® HELP KEEP YOU CLOSE TO YOUR FAVORITE PEOPLE, MUSIC, AND PLACES. UCONNECT FEATURES EASY-TO-NAVIGATE ICONS FOR RADIO AND SIRIUSXM SATELLITE RADIO<sup>[6]\*</sup> CONTROLS, PERSONAL DEVICES SUCH AS AN IPOD® OR SMARTPHONE, CLIMATE CONTROLS, AND AVAILABLE NAVIGATION AND BLUETOOTH® COMPATIBLE PHONES. BRING ALONG YOUR OWN TUNES VIA REMOTE SD CARD, REMOTE USB PORT WITH IPOD MOBILE DEVICE CONTROL, OR BLUETOOTH WIRELESS STREAMING. THE USB PORT CAN ALSO CHARGE YOUR COMPATIBLE DEVICES. WITH FRONT- AND REAR-MOUNTED STEERING WHEEL CONTROLS AND AVAILABLE VOICE COMMAND,<sup>[7]</sup> THERE'S NO TAKING YOUR HANDS OFF THE WHEEL OR EYES OFF THE ROAD. GIVE VOICE COMMANDS FOR THINGS LIKE PHONE OPERATION, RADIO/CD FUNCTIONS, AND ACCESSING YOUR DIGITAL MEDIA PLAYERS. OPT FOR NAVIGATION FOR TURN-BY-TURN DIRECTIONS, LANE GUIDANCE, OR LOCATING NEARBY RESTAURANTS, SHOPPING, HOSPITALS, OR LOCAL POINTS OF INTEREST. ADD AVAILABLE SIRIUSXM TRAFFIC<sup>[6]\*</sup> FOR COMPREHENSIVE TRAFFIC INFORMATION SENT DIRECTLY TO YOUR DURANGO. THIS INCLUDES UPDATED INFORMATION ON TRAFFIC SPEED AND FLOW, ACCIDENTS, CONSTRUCTION, AND ROAD CLOSURES. CHOOSE SIRIUSXM TRAVEL LINK<sup>[6]</sup> TO BRING LOCAL AND NATIONAL WEATHER FORECASTS, FUEL PRICES FOR LOCAL GAS STATIONS, IN-GAME AND FINAL SPORTS SCORES, WEEKLY SPORTS SCHEDULES, AND LOCAL MOVIE THEATER LISTINGS RIGHT TO YOUR VEHICLE. FOR MORE INFORMATION GO TO [DRIVEUCONNECT.COM](http://DRIVEUCONNECT.COM) \*FIRST YEAR OF SERVICE IS INCLUDED.

SIRIUS Forecast

Ann Arbor, MI Today

76°F Mostly cloudy

6:00	9:00	3:00
77°	68°	66°
Cloudy	Cloudy	Showers

CHANGE LOCATION Updated: 9-17-2012 3:42 PM

3:47 SAT 10/7 NOW LATER EXIT

SIRIUS Fuel Location

BP	\$4.10	1.9mi
CITGO	\$4.30	2.2mi
MOBIL	\$4.12	2.3mi
SPEEDWAY	\$3.98	2.3mi


4:02 SAT 10/7 LIST FUEL EXIT

Driving on E Montcalm St

Driving E GPS Speed 30

2:14 AM 530 HIDE NAV





*DOUBLE TAKE.* FROM THE OUTSIDE, DURANGO RALLYE AND DURANGO R/T COULD BE IDENTICAL TWINS. IT'S NOT UNTIL YOU OPEN THE DOOR THAT YOU REALIZE THEY'RE FRATERNAL. THE MATCHING EXTERIOR DNA STARTS WITH SLEEK MONOCHROMATIC WHEEL FLARES AND SILL MOLDINGS, BODY-COLOR GRILLE WITH BLACK ACCENTS, IMPRESSIVE 20-INCH POLISHED ALUMINUM WHEELS WITH MINERAL GRAY POCKETS, UNIQUE FRONT AND REAR FASCIAS, FOG LAMPS, DARK-TINTED HEADLAMPS WITH BLACK POCKETS (HIGH INTENSITY DISCHARGE [HID] ON R/T), AND DUAL BRIGHT EXHAUST TIPS.

LOOK BELOW THE SURFACE AND YOU'LL FIND THE R/T SHOWS OFF WITH A UNIQUELY STYLED INTERIOR WITH SEVEN-PASSENGER SEATING, FEATURING SUEDE INSERTS AND R/T LOGO EMBROIDERY. OR OPT FOR NEWLY AVAILABLE PREMIUM PERFORATED NAPPA LEATHER-TRIMMED SEATING WITH HEATED AND VENTILATED FRONT SEATS, HEATED SECOND-ROW SEATS, AND HEATED STEERING WHEEL. A 20-MM LOWER RIDE HEIGHT, SPORT SUSPENSION, UNIQUE EXHAUST TUNING, AND LEGENDARY 360-HORSEPOWER 5.7-LITER HEMI® V8 ALSO SET IT APART. MODELS EQUIPPED WITH THE RALLYE APPEARANCE GROUP BOAST A 295-HORSEPOWER 3.6-LITER PENTASTAR® V6 THAT DELIVERS IMPRESSIVE FUEL EFFICIENCY AND CLASS-LEADING<sup>[4]</sup> DRIVING RANGE. BOTH ROBUST POWERPLANTS ARE CAPABLE OF BEST-IN-CLASS<sup>[3]</sup> TOWING — UP TO 7,400 LB ON R/T MODELS AND UP TO 6,200 LB WITH THE RALLYE APPEARANCE GROUP.





STYLING AND PERFORMANCE THAT'S NOT FOR THE FAINT OF HEART.

LEFT: DODGE DURANGO R/T SHOWN IN REDLINE 2 COAT PEARL. RIGHT: DODGE DURANGO RALLYE APPEARANCE GROUP SHOWN IN MINERAL GRAY METALLIC.





TOWING / AWD / ENGINES



ATTITUDE WITH THREE TONS IN TOW.<sup>[8]</sup>

AND WHEN YOU'RE PULLING THAT MUCH WEIGHT, IT'S NICE TO KNOW THAT THE STANDARD TRAILER SWAY CONTROL (TSC)<sup>[9]</sup> HELPS MAINTAIN CONTROL OF WHATEVER IS BEING PULLED.

DODGE DURANGO R/T SHOWN IN BRILLIANT BLACK CRYSTAL PEARL.



**AN AWARD-WINNING 3.6-LITER DOHC PENTASTAR® VARIABLE VALVE TIMING (VVT) V6.** ADVANCED AUTOMOTIVE ENGINE TECHNOLOGY RESULTS IN THE BEST COMBINATION OF STANDARD V6 HORSEPOWER AND TORQUE IN ITS CLASS.<sup>[2]</sup> THE NUMBERS SPEAK FOR THEMSELVES — 290 HORSEPOWER (295 HORSEPOWER ON RALLYE) AND 260 LB-FT OF TORQUE, FUEL ECONOMY OF 23 HIGHWAY MPG,<sup>[10]</sup> AND A BEST-IN-CLASS<sup>[4]</sup> V6 HIGHWAY DRIVING RANGE OF OVER 550 MILES. FLEX FUEL CAPABILITY LETS YOU FILL UP WITH GASOLINE OR E85 FUEL.

**AVAILABLE 5.7-LITER HEMI® V8 — THE MOST POWERFUL ENGINE IN ITS CLASS!<sup>[2]</sup>** FOR AN EXTRA SPIKE IN ADRENALINE, CHOOSE THE 360 HORSEPOWER, 390 LB-FT OF TORQUE HEMI V8 ENGINE. THE STANDARD FUEL SAVER TECHNOLOGY SEAMLESSLY TRANSITIONS FROM EIGHT CYLINDERS TO FOUR WHEN CRUISING, CONTRIBUTING TO AN IMPRESSIVE HIGHWAY FUEL ECONOMY OF 20 MPG.<sup>[11]</sup>

**ALL-WHEEL DRIVE (AWD).** AVAILABLE ON V6 AND V8 MODELS, A FULLY AUTOMATIC AND SEAMLESS AWD SYSTEM WITH ACTIVE VARIABLE TORQUE DISTRIBUTION WORKS WITH ELECTRONIC BRAKE DISTRIBUTION CONTROL FOR ENHANCED VEHICLE STABILITY. ON V8 MODELS, AWD INCLUDES A LOW RANGE ON THE TRANSFER CASE FOR EXTREME 4x4 SITUATIONS.

**BEST-IN-CLASS<sup>[3]</sup> STANDARD AND AVAILABLE TOWING.** MODELS WITH THE STANDARD 3.6-LITER PENTASTAR V6 ENGINE TOW AN IMPRESSIVE 6,200 POUNDS.<sup>[8]</sup> OUTFIT DURANGO WITH THE 5.7-LITER V8 ENGINE AND IT TOWS UP TO AN ENORMOUS 7,400 POUNDS.<sup>[8]</sup> WHEN PAIRED WITH THE BRAWNY, AVAILABLE ACTIVE AWD SYSTEM, IT CAN HAUL THOSE HEAVY WATER TOYS OUT OF THE LAKE WITH EASE OR YOUR MOST PRIZED POSSESSIONS CROSS COUNTRY.













DURANGO R/T SHOWN IN MINERAL GRAY METALLIC.

---



---

## *THE BEST OFFENSE IS A GOOD DEFENSE.*

HERE'S WHY DURANGO SHOULD BE YOUR FIRST-ROUND DRAFT PICK.

---

**BLIND SPOT MONITORING (BSM)<sup>[12]</sup> AND REAR CROSS-PATH DETECTION.<sup>[13]</sup>** DUAL RADAR SENSORS CONSTANTLY MONITOR DRIVER BLIND SPOTS, PROVIDING NOTIFICATION OF AN ENCROACHING VEHICLE VIA ILLUMINATING ICONS ON SIDEVIEW MIRRORS AND BY AN AUDIBLE CHIME IF THE TURN SIGNAL IS ACTIVATED. WHEN IN REVERSE, REAR SENSORS WARN THE DRIVER WITH AN AUDIBLE CHIME IF CROSS-TRAFFIC APPROACHES THE VEHICLE. AVAILABLE.

**ADAPTIVE CRUISE CONTROL (ACC)<sup>[14]</sup>** AUTOMATICALLY ADJUSTS CRUISING SPEED TO MAINTAIN A PRESET DISTANCE BETWEEN YOUR VEHICLE AND THE ONE AHEAD. AVAILABLE.

**FORWARD COLLISION WARNING (FCW)<sup>[15]</sup>** RADAR SENSORS DETECT WHEN YOUR VEHICLE MAY BE APPROACHING AN OBSTACLE TOO RAPIDLY, ALERTING THE DRIVER WITH AN AUDIBLE CHIME AND VISUAL WARNING. AVAILABLE.

**PARKVIEW<sup>®</sup> REAR BACK-UP CAMERA.<sup>[13]</sup>** PROVIDES A WIDE-ANGLE VIEW ON THE RADIO SCREEN OF THE AREA BEHIND THE VEHICLE, AND INCLUDES GUIDELINES TO ASSIST IN ALIGNING TRAILER HITCHES AND HELPS WITH BACKING INTO PARKING SPACES. AVAILABLE. **PARKSENSE<sup>®</sup> REAR PARK ASSIST.<sup>[13]</sup>** WHEN IN REVERSE, SENSORS DETECT THE PRESENCE OF OBJECTS IN THE BACKUP PATHWAY AND PROVIDE AN AUDIBLE AND VISUAL WARNING. AVAILABLE.

**KEYLESS ENTER 'N GO.** THIS TECHNOLOGY AUTOMATICALLY UNLOCKS DOORS WHEN YOU PULL THE HANDLE INSTEAD OF HAVING TO FUMBLE FOR A KEY FOB. ONCE INSIDE, A SIMPLE PRESS OF THE BRAKE PEDAL AND THE START/STOP BUTTON BRINGS DURANGO'S ENGINE TO LIFE. AVAILABLE.

**READY ALERT BRAKING (RAB).** THE SYSTEM ANTICIPATES SITUATIONS WHEN THE DRIVER MAY INITIATE AN EMERGENCY BRAKE STOP AND USES THE **ELECTRONIC STABILITY CONTROL (ESC)<sup>[9]</sup>** PUMP TO PRECHARGE THE BRAKE SYSTEM IN ORDER TO DECREASE THE TIME REQUIRED FOR FULL BRAKE APPLICATION. STANDARD.





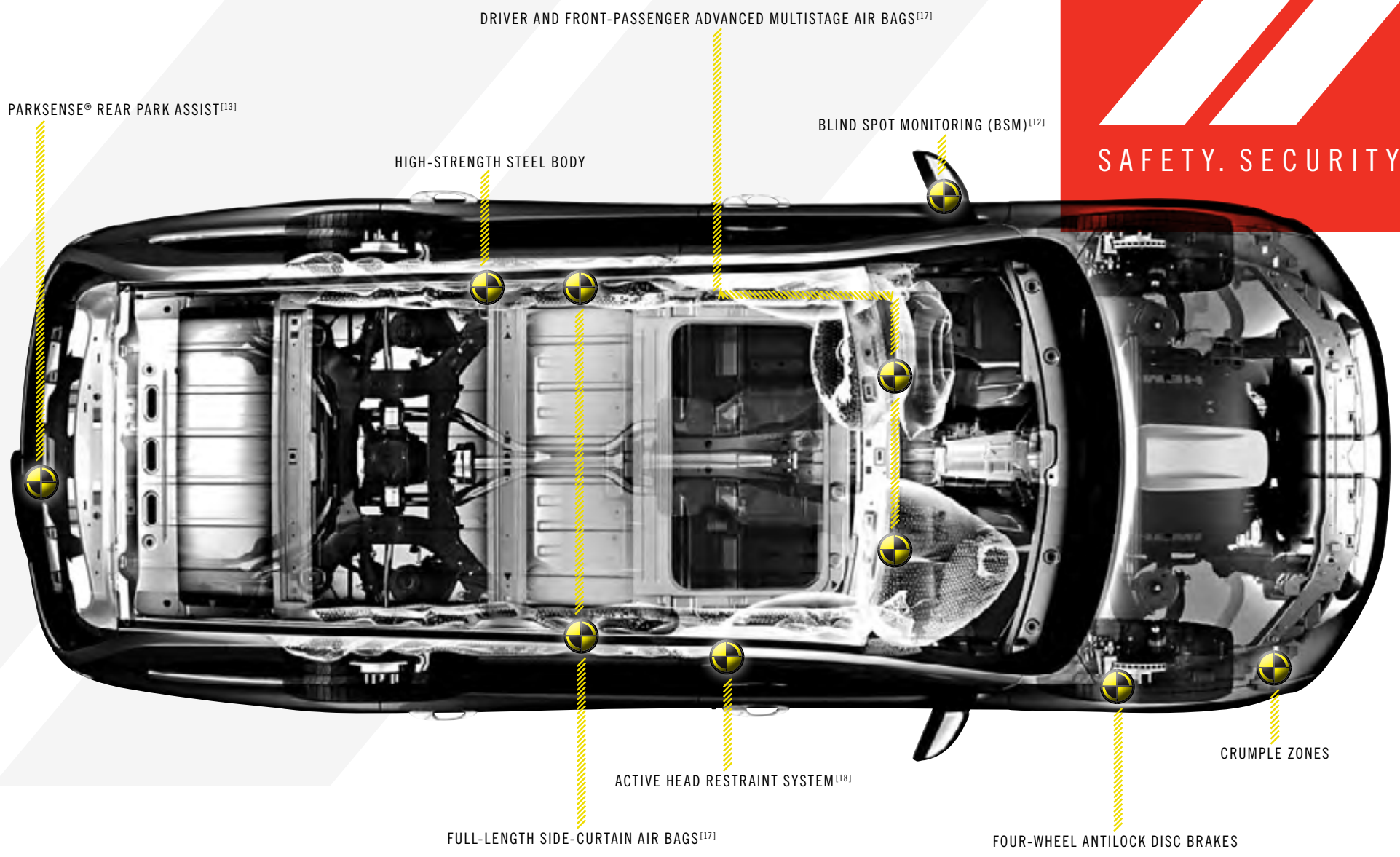
5 YEAR / 100,000 MILE  
POWERTRAIN WARRANTY<sup>[16]</sup>

## DURANGO — A 2012 INSURANCE INSTITUTE FOR HIGHWAY SAFETY (IIHS) TOP SAFETY PICK.

WITH 50 STANDARD AND AVAILABLE SAFETY AND SECURITY FEATURES, REASSURANCE IS ENGINEERED INTO EVERY DURANGO. **AIR BAGS.**<sup>[17]</sup> ADVANCED MULTISTAGE DRIVER AND FRONT-PASSENGER, FULL-LENGTH SIDE-CURTAIN, AND FRONT-SEAT SIDE-MOUNTED THORAX AIR BAGS ARE ALL STANDARD. **FRONT-SEAT ACTIVE HEAD RESTRAINTS.**<sup>[18]</sup> THESE RESTRAINTS MOVE FORWARD AND UPWARD IN THE EVENT OF A REAR-END COLLISION TO DECREASE THE SPACE BETWEEN THE HEAD RESTRAINT AND OCCUPANT'S HEAD, THEREBY HELPING TO REDUCE THE CHANCE OF INJURY. STANDARD. **RAIN-SENSING WIPERS AND RAIN BRAKE SUPPORT.** FRONT WIPERS ACTIVATE WHEN RAINDROPS ARE DETECTED (AVAILABLE), AND A NEW SMART BRAKE SYSTEM HELPS DRY THE BRAKE ROTORS ON WET ROADS (STANDARD). **CRUMPLE ZONES.** DESIGNED TO DIVERT AND DISSIPATE IMPACT ENERGY AWAY FROM THE PASSENGER COMPARTMENT, HELPING TO MINIMIZE INJURIES IN THE EVENT OF AN ACCIDENT. STANDARD. **ELECTRONIC STABILITY CONTROL (ESC).**<sup>[9]</sup> A VEHICLE-WIDE NETWORK OF SAFETY SENSORS PROVIDES INSTANT AID WHEN IT DETECTS THAT YOU'RE VEERING OFF YOUR INTENDED PATH. THIS ROBUST SYSTEM INCLUDES ELECTRONIC ROLL MITIGATION (ERM), ANTILOCK BRAKE SYSTEM (ABS) WITH BRAKE ASSIST, ALL-SPEED TRACTION CONTROL, AND TRAILER SWAY CONTROL (TSC).<sup>[9]</sup> STANDARD. **HILL START ASSIST.** AUTOMATICALLY APPLIES THE BRAKES MOMENTARILY TO HELP PREVENT ROLLBACK ON HILLS AND INCLINES. STANDARD.



SAFETY. SECURITY.







## AUTHENTIC DODGE ACCESSORIES

DODGE DURANGO SXT SHOWN IN DEEP CHERRY RED CRYSTAL PEARL WITH CHROME GRILLE, CHROME FRONT AIR DEFLECTOR, 20-INCH CHROME WHEELS, CHROME TUBULAR SIDE STEPS, AND CHROME MIRROR COVERS.

**WITH YOU EVERY MILE.** MOPAR® IS WITH YOU THE MOMENT YOU GET YOUR NEW KEYS AND FOR EVERY MILE THEREAFTER. IT'S A BRAND THAT HELPS MAINTAIN AND MAKE YOUR RIDE YOUR OWN WITH PARTS AND ACCESSORIES OF EVERY KIND — ALL ORIGINAL EQUIPMENT DESIGNED BY THE SAME ENGINEERS OF YOUR VEHICLE — SPECIFICALLY FOR YOUR MODEL. MOPAR ALSO ASSURES YOU WITH EXPERT TECHNICIANS WHO KNOW YOUR MAKE AND MODEL BEST, VEHICLE PROTECTION PLANS, EXPRESS LANE SERVICE, AND AN ONLINE OWNER CONNECT WEB SITE (REGISTER AT OWNERS.DODGE.COM). WELCOME TO MOPAR NATION. LEARN MORE ABOUT THE WORLD OF MOPAR AND ALL IT HAS TO OFFER AT MOPAR.COM





## DODGE.COM/LIFE

CHECK OUT AN EXTENSIVE LINE OF GIFTS AND GEAR FOR THE DODGE ENTHUSIAST. FROM AUTHENTIC APPAREL TO DIE-CAST REPLICA CARS FOR THE COLLECTOR, AS WELL AS ELECTRONICS AND OFFICE SUPPLIES, ALL LIFESTYLE ITEMS ARE AS BOLD AS YOUR DODGE VEHICLE. REFER TO DODGE.COM/LIFE FOR OUR FULL PRODUCT LINEUP.



## GO MOBILE

TAKE A MULTIMEDIA TOUR OF YOUR VEHICLE ON YOUR MOBILE DEVICE. VISIT THE CHRYSLER GROUP LLC PAGE IN iTunes® FROM YOUR SMARTPHONE OR iPad® TO DOWNLOAD THE MOST UP-TO-DATE VEHICLE APPS. LOG ON TO THE DODGE.COM MOBILE SITE FOR AN AT-A-GLANCE REVIEW OF WHAT YOU NEED TO KNOW ABOUT YOUR DODGE VEHICLE. EXPERIENCE VISUAL AND INTERACTIVE DEMONSTRATIONS WHILE GAINING ACCESS TO PRODUCT INFORMATION AT YOUR FINGERTIPS, WHEREVER YOU GO.

# BLACKTOP

ADD SOME EXTRA STYLE TO DURANGO RALLYE AND R/T MODELS WITH THE NEW BLACKTOP PACKAGE. FEATURES INCLUDE A BRILLIANT BLACK GRILLE AND 20-INCH GLOSS BLACK ALUMINUM WHEELS. INSIDE, OPT FOR AVAILABLE PREMIUM CLOTH WITH RED STITCHING AND DIGITAL SUEDE INSERTS, POWER DRIVER'S SEAT, BLACK COMODO ELM HYDROGRAPHICS, AND RED STITCHING ON THE ARMREST AND CENTER CONSOLE (STANDARD ON R/T).



DURANGO R/T SHOWN IN REDLINE 2 COAT PEARL WITH BLACKTOP PACKAGE.





## DURANGO SXT

### POWERTRAIN

- 3.6L Pentastar® 24V VVT V6, 290 horsepower and 260 lb-ft of torque 5-speed automatic transmission

### SELECT STANDARD EQUIPMENT

- 7-passenger premium cloth seating
- 60/40 Fold-and-Tumble 2nd-row reclining seat
- Fold-flat front-passenger seat
- 50/50 split-folding 3rd-row seat
- 18-inch aluminum wheels
- Fog lamps and auto headlamps
- Bright chrome exterior accents
- Body-color door handles and power heated mirrors
- Power windows and locks
- Remote keyless entry
- 3-zone Automatic Temperature Control
- Tilt/telescoping steering wheel with cruise and audio controls
- Uconnect® 130 AM/FM/CD/MP3 radio with 6 speakers
- SiriusXM Satellite Radio<sup>[6]</sup> with 1-year subscription
- Red glow rings on speedometer and tachometer
- Electronic Stability Control (ESC)<sup>[9]</sup> with Hill Start Assist, Ready Alert Braking (RAB), All-Speed Traction Control, Brake Assist, and Rain Brake Support
- 4-wheel antilock disc brakes
- Trailer sway control<sup>[9]</sup>
- 6 standard air bags<sup>[17]</sup> including front multistage air bags, front-seat side-mounted air bags and supplemental side-curtain all-row air bags
- Active front head restraints<sup>[18]</sup>

### SELECT OPTIONAL EQUIPMENT

- All-wheel drive (AWD) – single-speed, full-time
- 2nd-row Fold-and-Tumble Captain's Chairs
- 2nd-row console with armrest and storage
- Popular Equipment Group
- Uconnect/Leather Accents Group (Uconnect, leather-wrapped steering wheel and shifter)
- Uconnect 430N with 6.5-inch touch screen, Garmin® Navigation, and CD/DVD/MP3 radio
- Power sunroof
- Trailer Tow Group
- Chrome roof rack rails with integrated stowable crossbars
- Skid Plate Group (AWD)
- Engine Block Heater



## DURANGO RALLYE

### POWERTRAIN

- 3.6L Pentastar 24V VVT V6, 295 horsepower and 260 lb-ft of torque 5-speed automatic transmission

### SELECT STANDARD EQUIPMENT OVER SXT

- 20-inch polished aluminum wheels with Mineral Gray pockets
- Dual rear exhaust with bright tips
- Black headlamp bezels
- Body-color wheel lip moldings
- Body-color sill moldings
- Body-color performance front fascia
- Body-color grille
- Body-color rear fascia
- Leather-wrapped steering wheel
- Leather-wrapped shift knob
- Auto-dimming rearview mirror
- Uconnect Voice Command<sup>[7]</sup>
- Bluetooth® streaming audio

### SELECT OPTIONAL EQUIPMENT

- AWD – single-speed, full-time
- Blacktop Package (late availability)
- 2nd-row Fold-and-Tumble Captain's Chairs
- 2nd-row console with armrest and storage
- Popular Equipment Group
- Uconnect/Leather Accents Group (Uconnect, leather-wrapped steering wheel and shifter)
- Uconnect 430N with 6.5-inch touch screen, Garmin Navigation, and CD/DVD/MP3 radio
- Power sunroof
- Trailer Tow Group



## DURANGO CREW

### POWERTRAIN

- 3.6L Pentastar 24V VVT V6, 290 horsepower and 260 lb-ft of torque 5-speed automatic transmission
- 5.7L HEMI® V8 with Fuel Saver Technology, 360 horsepower and 390 lb-ft of torque 6-speed automatic transmission

### SELECT STANDARD EQUIPMENT OVER SXT

- Bright exterior door handles
- Bright roof rack rails with integrated stowable crossbars
- Exterior mirrors with supplemental turn signals
- Premium leather-trimmed seats
- Heated 1st- and 2nd-row seats
- Power 12-way driver/10-way front-passenger seats including power 4-way lumbar adjust
- Leather-wrapped steering wheel and shift knob
- Driver memory function – radio/seat/mirror
- Uconnect 430 with 6.5-inch touch screen and CD/DVD/MP3 radio
- Uconnect Hands-Free Phone with Voice Command<sup>[7]</sup>
- Auto-dimming rearview mirror with microphone
- ParkView® Rear Back-Up Camera<sup>[13]</sup> and ParkSense® Rear Park Assist<sup>[13]</sup>
- Keyless Enter 'n Go with push-button start
- Power liftgate
- Remote start and security alarm
- Cargo compartment cover
- Universal Garage Door Opener

### SELECT OPTIONAL EQUIPMENT

- AWD – single-speed, full-time (V6) or 2-speed, active on-demand (V8)
- 20-inch polished aluminum wheels with Tech Silver pockets
- Alpine® 9 speakers with 506-watt amplifier
- Rear DVD entertainment center
- 2nd-row Fold-and-Tumble Captain's Chairs
- 2nd-row console with armrest and storage
- Uconnect 430N with 6.5-inch touch screen, Garmin Navigation, and CD/DVD/MP3 radio
- Uconnect 730N with 6.5-inch touch screen, premium navigation, and CD/DVD/MP3 radio
- Power sunroof



## DURANGO R/T

### POWERTRAIN

- 5.7L HEMI® V8 with Fuel Saver Technology, 360 horsepower and 390 lb-ft of torque 6-speed automatic transmission

### SELECT STANDARD EQUIPMENT OVER RALLYE

- Performance steering and suspension (lowered 20 mm)
- High Intensity Discharge (HID) headlamps
- Keyless Enter 'n Go with push-button start
- Digital suede seats with Capri bolsters with Red accent stitching and R/T embroidery
- Power 12-way driver's seat including 4-way lumbar adjust
- Uconnect 430 with 6.5-inch touch screen and CD/DVD/MP3 radio
- SiriusXM Satellite Radio<sup>®</sup> with 1-year subscription
- Power liftgate
- Remote start and security alarm
- Universal Garage Door Opener

### SELECT OPTIONAL EQUIPMENT

- AWD – 2-speed, active on-demand
- Rear DVD entertainment center
- Uconnect 430N with 6.5-inch touch screen, Garmin Navigation, and CD/DVD/MP3 radio
- Uconnect 730N with 6.5-inch touch screen, premium navigation, and CD/DVD/MP3 radio
- Leather Interior Group with heated front and 2nd-row seats
- Premium Nappa Leather Group
- 2nd-row Fold-and-Tumble Captain's Chairs
- 2nd-row console with armrest and storage
- Power sunroof
- Technology Group
- Trailer Tow Group

## PACKAGES

- **Blacktop Package:** Gloss Black grille, Gloss Black 20-inch aluminum wheels.
- **Trailer Tow Group:** heavy-duty engine cooling, Class IV receiver hitch, 4- and 7-pin wiring harness, rear load-leveling suspension, full-size spare tire.
- **2nd-Row Fold-and-Tumble Captain's Chairs:** 2nd-row Captain's Chairs, mini console with cup holders and 2nd-row inboard armrests.
- **2nd-Row Console with Armrest and Storage:** 12V auxiliary power outlet, 1 USB charging port, illuminated rear cup holders.

- **Popular Equipment Group:** leather-wrapped steering wheel and shifter, auto-dimming rearview mirror, Uconnect Voice Command<sup>™</sup> Uconnect 430 with 6.5-inch touch screen, ParkSense Rear Park Assist,<sup>131</sup> ParkView Rear Back-Up Camera.<sup>131</sup>
- **Crew Convenience Group:** rain-sensing windshield wipers, Auto High-Beam Headlamp Control, Blind Spot Monitoring (BSM),<sup>122</sup> Rear Cross-Path Detection.<sup>131</sup>

- **Leather Interior Group:** power driver/passenger 4-way lumbar adjust, leather seats, radio/driver seat/mirrors with memory, power 6x9-inch multifunction fold-away mirror, power 8-way driver memory and 6-way passenger seat, heated front and 2nd-row seats.
- **Premium Nappa Leather Group:** Nappa perforated leather heated and ventilated front seats, driver memory system, Red accent stitching, premium leather-trimmed bucket seats (must have Leather Interior Group), perforated leather-wrapped heated steering wheel, floor console with leather armrest, leather-wrapped door panels.

- **Technology Group:** Forward Collision Warning (FCW),<sup>115</sup> Adaptive Cruise Control (ACC),<sup>114</sup> BSM,<sup>122</sup> Rear Cross-Path Detection.<sup>131</sup>
- **Rear DVD Entertainment Center:** Rear overhead console with 9-inch screen, 2 wireless headphones, wireless remote control.
- **Skid Plate Group:** tow hooks, fuel tank skid plate, transfer case skid plate, front suspension skid plate, underbody skid plate.



## DURANGO CITADEL

### POWERTRAIN

- 3.6L Pentastar® 24V VVT V6, 290 horsepower and 260 lb-ft of torque 5-speed automatic transmission
- 5.7L HEMI V8 with Fuel Saver Technology, 360 horsepower and 390 lb-ft of torque 6-speed automatic transmission

### SELECT STANDARD EQUIPMENT OVER CREW

- 20-inch chrome-clad aluminum wheels
- Unique bright grille inserts and bright exterior mirrors
- Premium Nappa leather-trimmed seating with perforated inserts
- Ventilated front seats, heated front and 2nd-row seats
- Heated, perforated leather-wrapped steering wheel
- Power tilt/telescoping steering column
- Uconnect 730N with 6.5-inch touch screen, premium navigation, and CD/DVD/MP3 radio
- Power sunroof
- Auto High-Beam Headlamp Control

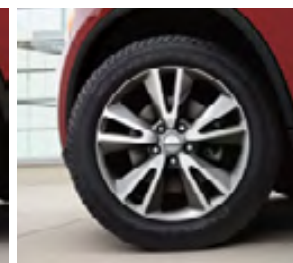
### SELECT OPTIONAL EQUIPMENT

- AWD – single-speed, full-time (V6) or 2-speed, active on-demand (V8)
- Trailer Tow Group
- Rear DVD entertainment center
- 2nd-row Fold-and-Tumble Captain's Chairs
- 2nd-row console with armrest and storage
- Technology Group
- Skid Plate Group (AWD)

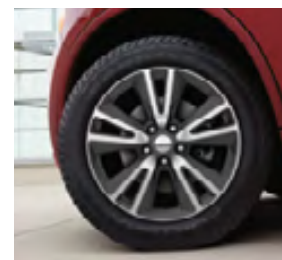
## DURANGO WHEELS



18-inch aluminum (standard on SXT and Crew)



20-inch polished aluminum with Tech Silver pockets (optional on Crew)



20-inch polished aluminum with Mineral Gray pockets (standard on R/T and Rallye)



20-inch Gloss Black aluminum (included with Blacktop Package on Rallye and R/T)



20-inch chrome-clad aluminum (standard on Citadel)





# DURANGO INTERIORS

A Gradual Mesh/Carolina premium cloth in Black (standard on SXT, Rallye, and Rallye Blacktop)

B Gradual Mesh/Carolina premium cloth in Medium Graystone (standard on SXT)

C Capri leather trim in Black (standard on Crew)

D Capri leather trim in Medium Graystone (standard on Crew)

E Digital suede inserts in Black/Red with Capri bolsters in Black (optional on Rallye or Blacktop Package, standard on R/T and includes R/T embroidered logo)

F Capri Axis perforated leather trim in Black with Red accent stitching (optional on R/T)

G Premium heated and ventilated Nappa Axis leather trim in Black with perforated inserts and Red accent stitching (optional on R/T)

H Premium heated and ventilated Nappa Axis leather trim in Light Frost Beige with perforated inserts and accent stitching (standard on Citadel)

I Premium heated and ventilated Nappa Axis leather trim in Tan with perforated inserts and accent stitching (standard on Citadel)

J Premium heated and ventilated Nappa Axis leather trim in Black with perforated inserts and accent stitching (standard on Citadel)

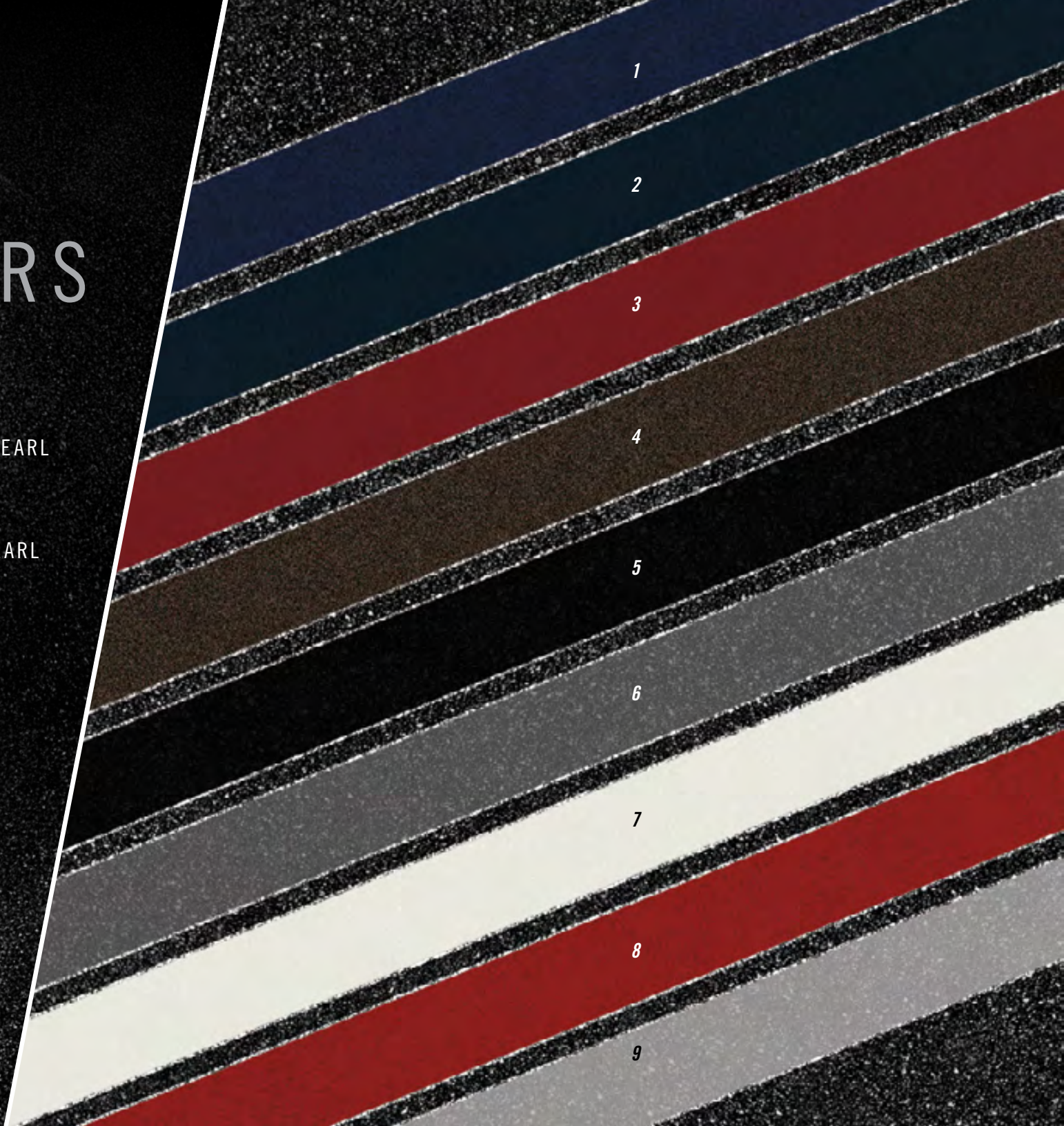




# DURANGO EXTERIORS

- 1 TRUE BLUE PEARL
- 2 MAXIMUM STEEL METALLIC
- 3 DEEP CHERRY RED CRYSTAL PEARL
- 4 RUGGED BROWN PEARL
- 5 BRILLIANT BLACK CRYSTAL PEARL
- 6 MINERAL GRAY METALLIC
- 7 BRIGHT WHITE
- 8 REDLINE 2 COAT PEARL
- 9 BRIGHT SILVER METALLIC

Not all models available in all colors. See your dealer for details.







// [DODGE.COM/DURANGO](http://DODGE.COM/DURANGO)

DURANGO CITADEL SHOWN IN BRILLIANT BLACK CRYSTAL PEARL.





IN ONE WORD. *DURANGO.*





CHALLENGER



CHARGER



DART



AVENGER



GRAND CARAVAN



DURANGO



JOURNEY



DODGE.COM // 800-4ADODGE

DODGE IS A REGISTERED TRADEMARK OF CHRYSLER GROUP LLC.



Join our community on Facebook, follow us on Twitter, and check us out on YouTube.

[1] Based on the latest available competitive information, Ward's vehicle segmentation, and an EPA estimated 14 city/20 hwy (RWD) and 13 city/20 hwy (AWD) fuel economy. [2] Based on the latest available competitive information and Ward's vehicle segmentation. [3] When properly equipped. Based on the latest available competitive information and Ward's vehicle segmentation. [4] Based on latest available competitive information, Ward's vehicle segmentation, a 24.6-gallon tank and an EPA estimated 23 highway mpg (AWD), EPA estimated 23 highway mpg (RWD). [5] Subscription required. Sold separately. The Uconnect Web feature is not intended for use by the driver while the vehicle is in motion. Always drive carefully. [6] Sirius services require subscriptions, sold separately after 12-month trial included with new vehicle purchase. If you decide to continue your service at the end of your trial subscription, the plan you choose will automatically renew and bill at then-current rates until you call SiriusXM at 1-866-635-2349 to cancel. See SiriusXM Customer Agreement for complete terms at siriusxm.com. All fees and programming subject to change. Sirius satellite service available only to those at least 18 and older in the 48 contiguous U.S., D.C., and P.R. (with coverage limitations). Our Internet radio service is available throughout our satellite service area and in AK and HI. Traffic information not available in all markets. See siriusxm.com/traffic for details. © 2012 Sirius XM Radio Inc. Sirius XM and all related marks and logos are trademarks of Sirius XM Radio Inc. [7] Requires Uconnect Phone. [8] When properly equipped. [9] No system, no matter how sophisticated, can repeal the laws of physics or overcome careless driving actions. Performance is limited by available traction, which snow, ice, and other conditions can affect. When the ESC warning lamp flashes, the driver needs to use less throttle and adapt speed and driving behavior to prevailing road conditions. Always drive carefully, consistent with conditions. Always wear your seat belt. [10] EPA estimated 16 city/23 highway mpg for both RWD and AWD models. [11] EPA estimated 14 city/20 highway mpg (RWD), EPA estimated 13 city/20 highway mpg (AWD). [12] Always check visually for vehicles prior to changing lanes. [13] Always check entire surroundings before backing up. [14] ACC is a driver convenience system, not a substitute for active driver involvement. The driver must remain aware of traffic conditions and be prepared to use the brakes to avoid collisions. [15] FCW system is solely an alert system for the front of the vehicle which does not take any actions to change the vehicle dynamics to avoid a collision; not a substitute for active driver involvement. The driver must remain aware of traffic conditions and be prepared to use the brakes to avoid collisions. [16] Transferable. See dealer for complete details and a copy of the 5-Year/100,000-Mile Powertrain Limited Warranty. [17] The Advanced Front Air Bags in this vehicle are certified to the new U.S. federal regulations for advanced air bags. Children 12 years old and younger should always ride buckled up in a rear seat. Infants in rear-facing child restraints should never ride in the front seat of a vehicle with a passenger front air bag. All occupants should always wear their lap and shoulder belts properly. [18] Always sit properly with the head restraint properly adjusted. Never place anything in front of the head restraint. About this catalog: Since the time of printing, some of the information you'll find in this catalog may have been updated. Ask your dealer for details. Some of the equipment shown or described throughout this catalog may be available at extra cost. Specifications, descriptions, illustrative materials, and all competitive comparisons contained herein are as accurate as known at the time this publication was approved for printing. Chrysler Group LLC reserves the right to discontinue models at any time or change specifications without notice or without incurring obligation. Options may be required in combination with other options. For the price of the model with the equipment you desire, or verification of specifications contained here, see your Dodge dealer. iPod, iPad, and iTunes are registered trademarks of Apple Inc. All rights reserved. Facebook is a registered trademark of Facebook, Inc. Twitter is a service mark of Twitter, Inc. YouTube is a registered trademark of Google Inc. Garmin and the Garmin logo are registered trademarks of Garmin Ltd. or its subsidiaries and are registered in one or more countries, including the United States. Sirius, XM and all related marks and logos are trademarks of Sirius XM Radio Inc. Bluetooth is a registered trademark of Bluetooth SIG, Inc. Alpine is a registered trademark of Alpine Electronics, Inc. All rights reserved. Chrysler, Dodge, Durango, Avenger, Challenger, Charger, Dart, Grand Caravan, Journey, HEMI, Mopar, Durango Crew, Blacktop, Citadel, SXT, ParkSense, ParkView, Pentastar, R/T, and Uconnect are registered trademarks of Chrysler Group LLC. © 2012 Chrysler Group LLC. All rights reserved.