



DODGE
GRAB LIFE BY THE HORNS



**VELOCITY
MEETS VERSATILITY**

2006

MAGNUM

After more than thirty years, HEMI® power is unleashed to the streets in the all-new 2006 Dodge Magnum.

With its innovative styling, performance and utility, you'll see that there's nothing else like it.

Check out the bold look and powerful performance of Magnum

- Power and Performance
- Versatility
- Color Options
- Models

For more information, visit dodge.com/magnum
©1995-2005 DaimlerChrysler. All Rights Reserved.
For important information, go to dodge.com/universal/privacy.html



POWER

Magnum R/T's 5.7-liter HEMI® V8 engine with the Multiple-Displacement System (MDS) is a pure stroke of genius. By switching from eight cylinders to four during cruising and light acceleration, MDS improves fuel economy from 5 to 20 percent, depending on driving habits.



Magnum gives you a choice of three awe-inspiring engines: Magnum SE's 2.7-liter V6, Magnum SXT's high-output 3.5-liter V6, and, for the Magnum R/T, a 5.7-liter HEMI® V8 with the Multiple-Displacement System (MDS). With horsepower and torque ratings that most vehicles envy, all three deliver heart-stopping acceleration.



ELECTRONIC STABILITY PROGRAM

The available advanced electronic stability program (ESP)* helps maintain stability by monitoring such factors as steering angle, turning rate, and lateral acceleration to determine vehicle behavior. Once the system determines that vehicle behavior differs from the driver's intended course, ESP will do whatever can be done, within the limits of available traction, to keep the car on course. The brake assist feature can detect a driver's intended panic stop, and apply optimum brake pressure to help achieve minimum stopping distances.

** Always drive carefully, consistent with conditions. Always wear your seat belt and obey traffic laws.*



SUSPENSION

A short- and long-arm (SLA) front suspension and five-link independent rear suspension system maintain independent control of each wheel

for excellent handling. An advanced suspension mounting system dramatically reduces road noise inside the passenger compartment. What this means to you is a smooth ride that is also quiet.

ALL-WHEEL DRIVE

Introducing a new spin on performance with less spin at the wheels. Magnum SXT and R/T feature an available all-wheel-drive system that greatly improves traction. A front differential and transfer case added to the standard rear-wheel drive layout deliver a 38/62 percent torque split between the front and rear wheels for the performance of rear-wheel-drive handling with the security of all-wheel-drive traction.



ALL-SPEED TRACTION

The available all-speed traction control operates both the brakes and the electronic throttle control (ETC), enhancing mobility and directional stability while preventing excessive wheel slip when accelerating on slippery surfaces.



TOWING

Magnum R/T, when equipped with the Trailer Tow Group, can tow trailers up to 3,800 pounds. Without the Trailer Tow Group, Magnum delivers up to 2,000 pounds of towing capacity when powered by the 3.5- or 5.7-liter engine. Magnum SE's 2.7-liter engine can tow up to 1,000 lbs. Maintaining a proper ride height is critical while towing or carrying heavy loads. R/T models with the Trailer Tow Group feature a self-leveling rear suspension that adjusts automatically to ensure a constant ride height, no matter what kind of load you're carrying. (Also available on SXT rear-wheel- and all-wheel-drive models.)

REAR-WHEEL DRIVE

Magnum marks the return of powerful rear-wheel drive performance to the Dodge line. Rear-wheel drive gives better traction for acceleration with high-performance engines, a near-50/50 weight distribution enhances vehicle balance, and a longer wheelbase means a smoother ride with even more interior room.





VERSATILE PERFORMER

For too many years you've had to choose between performance and versatility. If you needed a vehicle that could haul the kids to practice or haul lumber from the home improvement store, you had to give up on real, aggressive power. But with the 2006 Dodge Magnum you can kiss that compromise goodbye. In addition to great power, performance, and handling, Magnum is also versatile enough to handle everyday tasks.

Magnum lets you carry passengers and cargo—a whole lot of cargo. There's 27.2 cubic feet of cargo space behind the rear seats, which turns into 71.6 cubic feet with the rear seats folded down. This gives you the versatility to handle both workday projects and weekend fun.

The bilevel cargo floor includes a removable trifold upper divider and lower load floor to organize, store, and hide valuables. The lower load floor is also hinged for easy access to the spare tire, jack, and battery.



INSTRUMENT CLUSTER

From the black-on-white gauge display in the daytime to the comfortable blue-green glow of the digits in the evening, the engaging gauges on Magnum are easy to read any time of the day or night.

The available electronic vehicle information center (EVIC) is designed to provide valuable information to get you down the road. The steering wheel—mounted controls will let you navigate through such features as the UConnect™ hands-free communication system screen, the navigation system's turn-by-turn route guidance, trip computer, outside temperature, compass, and audio settings.



NAVIGATION SYSTEM

The available integrated DVD-based global positioning satellite system (GPS) with color display provides precise detail on where you are and where you're going. In fact, it will give you turn by turn instructions so you'll never have to stop to ask for directions.



UCONNECT™

The available Uconnect hands-free communication system is cool and convenient. All you need to do is set up any compatible Bluetooth™ hands-free wireless phone in Magnum, and the Uconnect system automatically lowers the audio system volume and broadcasts the incoming call. A microphone in the rearview mirror takes your voice commands while you keep your hands on the wheel and your eyes on the road.



LIFTGATE

The unique forward-hinging liftgate opens up and away from you, allowing access to the rear cargo area without making you back out of the way. In fact, Magnum's unique rear cargo area enables you to load and unload large objects with ease.

** Properly secure all cargo.*



PASSENGER PROTECTION

Even the most careful driver occasionally gets into unavoidable situations. When that happens, it's nice to know that the next-generation multistage front air bags standard on all models of Dodge Magnum will inflate according to the severity of the impact.[†]

And the supplemental air bag[‡] available on all models offer additional side-impact protection to both front- and rear-seat passengers.

† Always wear a seat belt. Remember, a back seat is the safest place for children 12 and under.

AVAILABLE EXTERIOR COLORS



Stone White

Brilliant Black Crystal Pearl*

Inferno Red Crystal Pearl*

Silver Steel Metallic



Magnesium Pearl

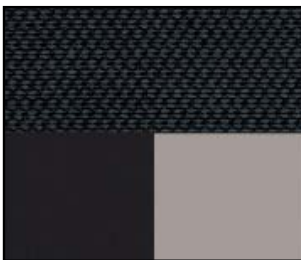
Midnight Blue Pearl

Bright Silver Metallic*

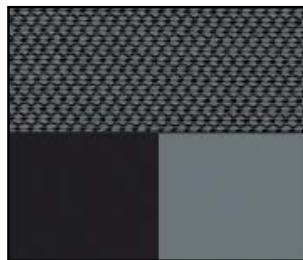
*Available on SRT8

FABRIC & TRIM

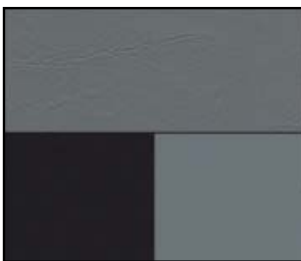
A. Magnum SE



B. Magnum SXT



C. Magnum R/T



A. Medium Slate Gray Trumbull Cloth Dark Slate Gray (upper trim)
 Light Slate Gray (lower trim)
 Also available in: Dark Slate Gray Trumbull Cloth Dark Slate Gray
 (upper trim) Light Graystone (lower trim)

B. Dark Slate Gray Trumbull Cloth Dark Slate Gray (upper trim)
 Light Graystone (lower trim)
 Also available in: Medium Slate Gray Trumbull Cloth Dark Slate Gray
 (upper trim) Light Slate Gray (lower trim)

C. R/T (optional SXT) Light Graystone Royale Leather Trim Dark Slate Gray
 (upper trim) Light Graystone (lower trim)
 Also available in: R/T (optional SXT) Light Slate Gray Royale Leather
 Trim Dark Slate Gray (upper trim) Light Slate Gray (lower trim)

WHEELS



- A. SE — 17" Bolt-on Wheel Cover
- B. SXT — 17" Machined-Face Aluminum Wheel
- C. R/T — 18" Ultra-Bright Aluminum Wheel
- D. SXT AWD, R/T AWD — 18" Machined-Face Aluminum Wheel
- E. SRT8 — 20"x9" Forged Aluminum Wheel

MAGNUM BUYER'S GUIDE

	RWD				AWD	
	SE	SXT	R/T	SRT8	SXT	R/T
	2DC	2DG	2DN	2DX	2DG	2DN
ENGINE/TRANSMISSION						
2.7L DOHC 24V V6/4-Speed Automatic	22C					
3.5L High Output SOHC 24V V6/4-Speed Automatic		26G				
3.5L High Output SOHC 24V V6/5-Speed AutoStick®					27G	
5.7L SOHC Multiple Displacement System (MDS) V8/5-Speed AutoStick			29N			29N
6.1L HEMI V8/5-Speed w/AutoStick				21X		
MECHANICAL						
BRAKES						
— 4-wheel disc	•					
— 4-wheel disc antilock with all-speed traction control (Packaged in Safety/Security & Convenience Group)	P	•				
— Performance 4-wheel disc antilock with all-speed traction control			•		•	•
— Brembo Performance braking with antilock and all-speed traction control				•		
ELECTRONIC STABILITY PROGRAM — Includes Brake Assist (ABS and all-speed traction control)	O	•	•	•	•	•
ENGINE BLOCK HEATER	O	O	O		O	O
SPEED CONTROL — Electronic with steering wheel stalk-mounted controls	•	•	•	•	•	•
SUSPENSION — Load leveling and height control (Packaged in Trailer Tow Group)		O	P		O	P
EXTERIOR FEATURES						
EXHAUST SYSTEM — Stainless steel dual exhaust with bright exhaust tips			•	•		•
LIGHTING, EXTERIOR — Fog lamps, integral to front fascia		•	•	•	•	•
MIRRORS, EXTERIOR	•					
— Power fixed, black						
— Power fixed, heated, body-color		•			•	
— Power folding, heated, body-color			•	•		•
SUNROOF — Power, with express-opening/-closing feature (includes universal garage door opener on SRT8)		O	O	O	O	O
SUNSCREEN PRIVACY GLASS	O	•	•	•	•	•
TIREFIT SYSTEM — Tire Sealant and Compressor				•		
TIRES	•	•	•		•	•
— Compact spare tire						
— P215/65R17 98T BSW all-season	•	•				
— P225/60R18 BSW all-season touring (Packaged with 18" Aluminum Wheel)		P	•		•	•
— P215/65R17 all-season, self-sealing (Packaged in Protection Group)	•	P				
— P225/60R18 all-season touring self-sealing (Packaged in Protection Group)			P		P	P
— P245/45ZR20, P255/45ZR20 Performance				•		
— P245/45ZR20 AS Performance Tires				O		
WHEELS	•					
— 17" steel with bolt on wheel covers						
— 17" aluminum, machined-face		•				
— 18" polished aluminum (Machined on AWD)		O	•		•	•
— 20" SRT8 forged aluminum				•		
INTERIOR FEATURES						
AIR CONDITIONING	•	•	•	•	•	•
— Automatic Dual Zone Temperature Control (Packaged in Convenience Group II and SRT Option Group I)			P	P		P

RWD = Rear-wheel drive AWD = All-wheel drive
 • = Included. P = Available within package noted. O = Optional.

MAGNUM (CONTINUED)

	RWD				AWD	
	SE	SXT	R/T	SRT8	SXT	R/T
INTERIOR FEATURES (continued)						
CARGO NET (Packaged in Roof Rack and Cargo Organizer Group)	P	•	•	•	•	•
COVER — Cargo compartment (Packaged in Roof Rack and Cargo Organizer Group)	P	•	•	•	•	•
IN-CLUSTER OUTSIDE TEMPERATURE DISPLAY	•	•	•	•	•	•
MIRRORS, INTERIOR						
— Auto-dimming rearview mirror (Packaged w/UConnect™ Hands-Free Communication)	P	P	P	•	P	P
— Day/night rearview	•	•	•		•	•
— Driver's side covered visor vanity	•					
— Illuminated visor vanity		•	•	•	•	•
PEDALS — Power adjustable (Packaged in Convenience Group I SE, Comfort Seating Group SXT, and Convenience Group II RT)	P	P	P	•	P	P
POWER ACCESSORY DELAY	•	•	•	•	•	•
SHIFT KNOB						
— Leather-wrapped (Packaged in Comfort Seating Group on SXT)		P	•	•	•	•
— Urethane	•	•				
STEERING WHEEL						
— Leather-wrapped (Packaged in Comfort Seating Group on SXT)		P	•	•	P	•
— Manual tilt/telescoping steering column	•	•	•	•	•	•
UNIVERSAL GARAGE DOOR OPENER — Programmable, 3-function with remote controls for garage door opener, interior/exterior home lighting or security devices (Packaged in the Electronics Convenience Group and SRT Option Group I)			P	P		P
VIDEO ENTERTAINMENT SYSTEM (VES) — This center armrest mounted DVD player includes a 7-inch screen, two wireless headsets and a remote		O	O		O	O
SEATING AND TRIM						
SEAT MATERIALS						
— Cloth-trim, includes urethane steering wheel and shifter knob	•	•			•	
— Includes leather-trimmed seats with Preferred Suede,® 8-way power driver and front-passenger seats				•		
— Leather-trimmed heated front 8-way power driver and 8-way passenger with manual lumbar includes leather-wrapped steering wheel and shifter knob (Packaged in Comfort Seating Group)		P	•		P	•
FRONT						
— Leather-trimmed bucket (Packaged in Comfort Seating Group)		P	•	•	P	•
— Low-back buckets	•	•			•	
— Manual driver/passenger adjustable lumbar	•	•	•	•	•	•
— Power 8-way driver's seat		•	•	•	•	•
— Power 8-way front-passenger seat (Packaged in Comfort Seating Group and Convenience Group II on R/T)		P	P	•	P	P
REAR — 60/40 split-folding with armrest and cup holders	•	•	•	•	•	•
AUDIO OPTIONS						
RADIO						
— AM/FM radio, cass/CD with 6-disc and MP3 compatibility		O	O	•	O	O
— AM/FM radio with compact disc and changer controls and auxiliary input jack ⁽³⁾	•	•	•		•	•
— AM/FM (6) CD radio with integrated display and navigation system with GPS and MP3 compatibility (Packaged in SRT8 Option Group III)			O	P		O
SIRIUS SATELLITE RADIO — Includes 1-year subscription provided by SIRIUS, available only within the continental U.S. (Packaged in SRT Option Group III)	O	O	O	P	O	O
SOUND SYSTEMS						
— 4 speakers	•	•			•	
— 6 Boston Acoustics speakers with 276-watt digital amplifier		O	•	•	O	•
— 11 High-Performance KICKER speakers with a 276-watt amplifier and 100-watt Subwoofer amplifier				O		

MAGNUM (CONTINUED)

	RWD				AWD	
	SE	SXT	R/T	SRT8	SXT	R/T
SAFETY AND SECURITY						
AIR BAGS⁽¹⁾						
— Advanced multistage driver and front-passenger with Occupant Classification System ⁽²⁾	•	•	•	•	•	•
— Side-curtain for front and rear seats (Packaged in Protection Group)	O	P	P	O	P	P
CHILD SEAT ANCHOR SYSTEM (LATCH) — Lower child seat anchors and upper tether anchors help ease the installation of compatible aftermarket child seats	•	•	•	•	•	•
REMOTE KEYLESS/ILLUMINATED ENTRY SYSTEM — Includes 2 transmitters	•	•	•	•	•	•
SECURITY ALARM — (Packaged in Electronics Convenience Group and SRT Option Group II)			P	P		P
SENTRY KEY® — Antitheft engine immobilizer	•	•	•	•	•	•
TIRE PRESSURE MONITOR DISPLAY				•		
TIRE PRESSURE MONITOR WARNING LAMP			•			•
UCONNECT™ HANDS-FREE COMMUNICATION — Included with auto-dimming rearview mirror (Packaged in SRT Option Group III)	O	O	O	P	O	O
PACKAGES						
COMFORT SEATING GROUP — Includes leather-trimmed seats, heated front seats, leather-wrapped steering wheel and shifter knob, power adjustable pedals and 8-way power driver's and front passenger's seats		O			O	
CONVENIENCE GROUP I — Includes 8-way power driver's seat and power adjustable pedals	O					
CONVENIENCE GROUP II — Includes Dual Zone Air Conditioning with automatic temperature control, 8-way power heated front driver and passenger seats, auto headlamps, power one-touch up and down front windows and power adjustable pedals			O			O
ELECTRONICS CONVENIENCE GROUP — Includes instrument cluster with display screen, compass gauge, Vehicle Information Center, traveler/mini-trip computer, security alarm, steering wheel-mounted audio controls and Universal Garage Door Opener			O			O
PROTECTION GROUP — Includes front and rear side-curtain air bags, air filtering system and P215/65R17 99T Self-Sealing Tires on SXT and P225/60R18 99T Self-Sealing Tires on R/T and SXT with optional 18-inch wheels and tires on SXT AWD		O	O		O	O
ROOF RACK AND CARGO ORGANIZER GROUP — Includes rear cargo organizer, cargo net, cargo compartment cover (C-CPOS) and roof rack	O	O	O		O	O
SMOKER'S GROUP — Includes front ashtray and lighter	O	O	O	•	O	O
SRT OPTION GROUP I — Includes Dual Zone Automatic Temperature Control, air filtration system, heated front seats, Rear Cargo Organizer, and Universal Garage Door Opener				O		
SRT OPTION GROUP II — Includes Security Alarm, and KICKER SRT high-performance audio system				O		
SRT OPTION GROUP III — Includes DVD-based, Full-Screen GPS Navigation radio, SIRIUS Satellite Radio with 1-year service provided by SIRIUS and Uconnect				O		
TRAILER TOW PREP GROUP — Includes severe-duty engine cooling and load-leveling and height control shocks			O			O

• = Included. P = Available within package noted. O = Optional.

⁽¹⁾Certified to the Federal Regulation for automatic passenger occupant classification. Always use seat belts. Children 12 and under should always be in a backseat correctly using an infant or child restraint system, or the seat belt positioned correctly for the child's age and weight.

⁽²⁾The OCS determines the conditions for activation or deactivation of the passenger-side front air bag based on the weight of the occupant. It may not activate the air bag if the occupant has incorrect seating posture or is moving in the seat. You should observe the air bag light to determine if the OCS is deciding properly. Passenger should sit properly in the front seat with the seat belt fastened at all times.

⁽³⁾Auxiliary input jacks are late availability.