

We
questioned
everything.



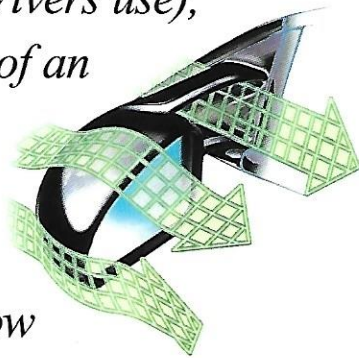


This is the answer. Proven cab-forward design that provides 111.6 cubic feet of total combined space for passengers and cargo.



Racing-inspired performance features including a fully independent, double-wishbone suspension, speed-sensitive steering, and rigid straight-rail chassis design.

AutoStick® and available V6 engine on ES models that combine to produce the control and sheer fun of “clutchless” manual shifting (like Formula One drivers use), with the convenience of an automatic.



And design innovations like side mirrors that improve visibility by managing airflow to redirect rain from the glass area. It all raises the question: Which sleek, wide-stanced, wheels-to-the-corner sedan has the handling, stability and style that make each moment behind the wheel a decided pleasure? You know the answer.

Stratus  The New Dodge





We factored in

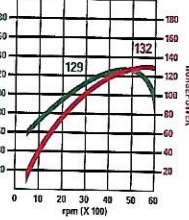


An available 2.5-liter SOHC 24-valve V6* engine delivers 168 horsepower and 170 pound-feet of torque for the sort of acceleration you would expect. You can also choose between a standard

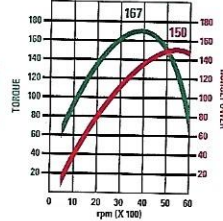
2.0-liter four-cylinder engine and an optional 2.4-liter four-cylinder engine.

*Built by Mitsubishi Motors Corporation

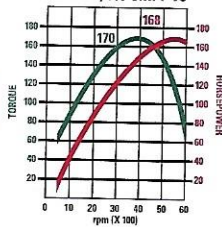
2.0-Liter/16V SOHC 4-Cyl



2.4-Liter/16V DOHC 4-Cyl



2.5-Liter/24V SMPI V6*



Available AutoStick® offers both automatic and manual shifting in one neat handful. Now you can hold gears longer for better acceleration, tap down a gear to set up the next curve, or place the gear in overdrive — and go.

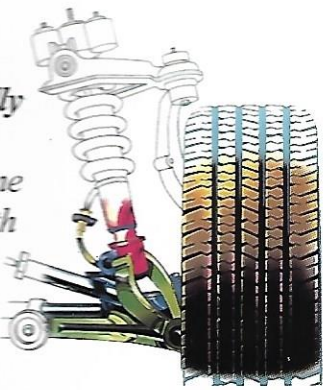


ES

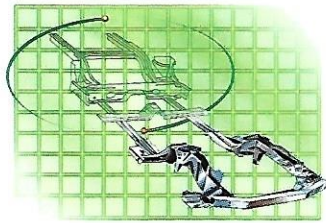
DODGE

ne thrill factor.

eel fully
dent,
wishbone
ion with
d rear
r bars:
ful to
, but a
o drive.



The straight-rail underbody design for Stratus has the tensile rigidity to make a strong, secure, and satisfying connection between driver, vehicle, and road.



DODGE
Skip Barber
DRIVING SCHOOL

The Dodge/Skip Barber Driving

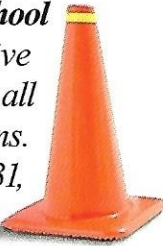
School and Skip Barber Racing School

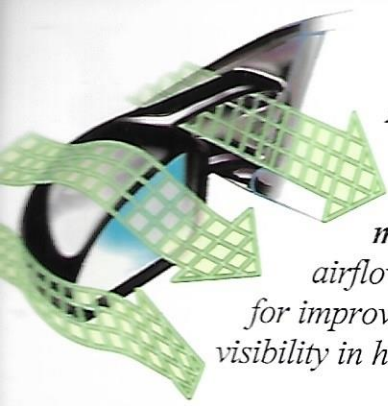
have chosen Dodge as the exclusive supplier of vehicles and engines for all their teaching and racing operations.

For information, call 1-800-221-1131,

e-mail speed@skipbarber.com or

visit the Web site at www.skipbarber.com.





Aerodynamic twin-post exterior mirrors direct airflow to reroute rain for improved side window visibility in heavy weather.

Look

Stratus sound system options include AM/FM stereo radio, and CD and cassette player combinations, with three-band graphic equalizer. For hours of your favorite background music, consider an optional Mopar remote six-disc CD changer. (See page 14 for specific availability.)



The Stratus interior is a text-book definition of superb ergonomics. Every control is within fingertip reach, while illumination for available power window and door lock switches guides your hand at night.



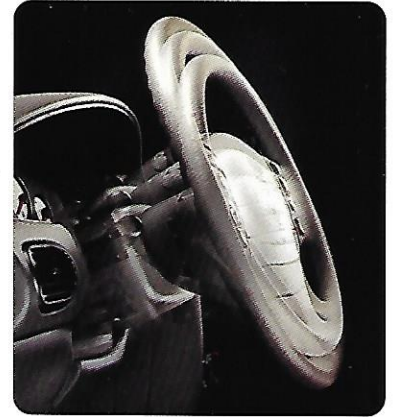
Out.

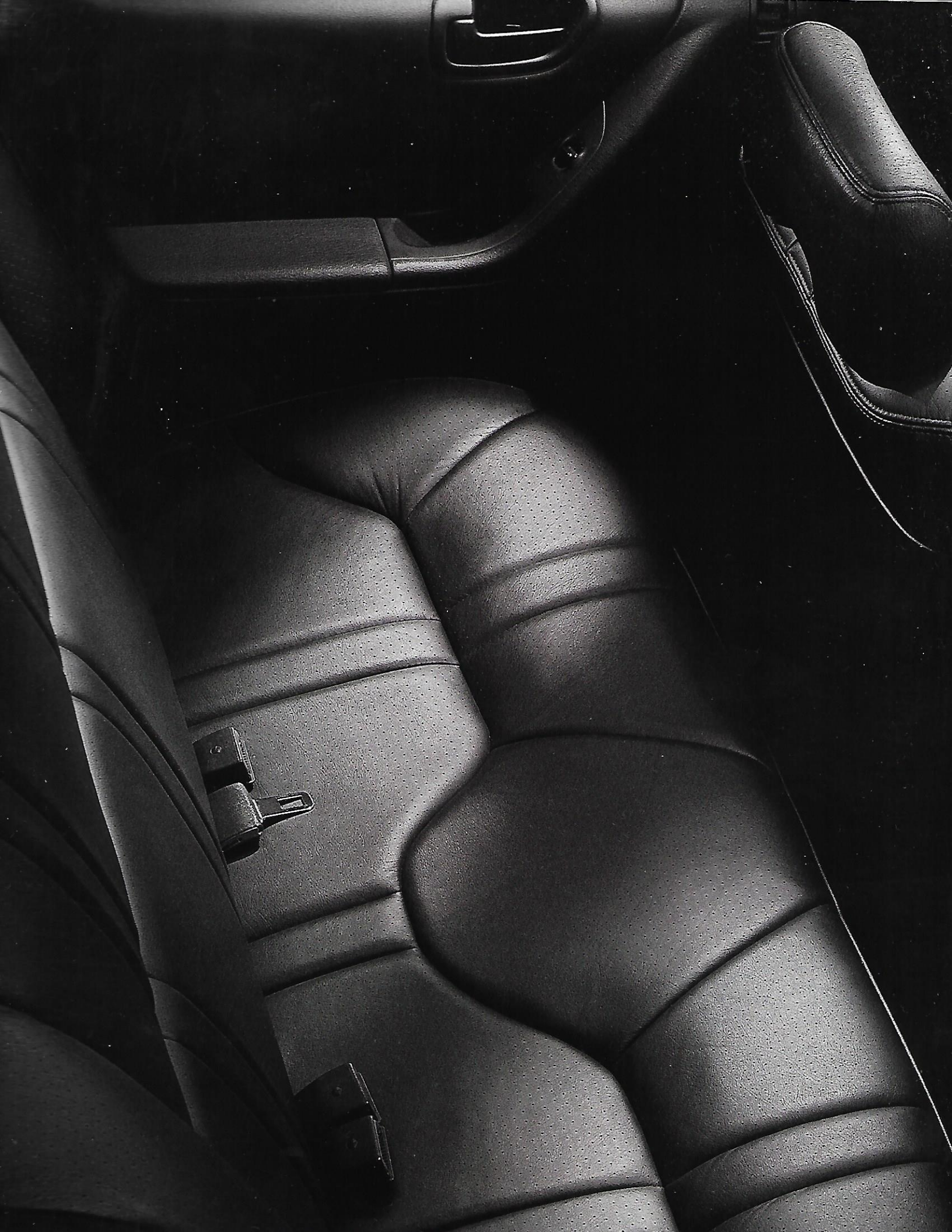


A steeply raked windshield sweeps upward at an angle that vastly broadens your view even while it lets Stratus slice through wind resistance, keep down fuel costs, and keep a tight grip on the road.

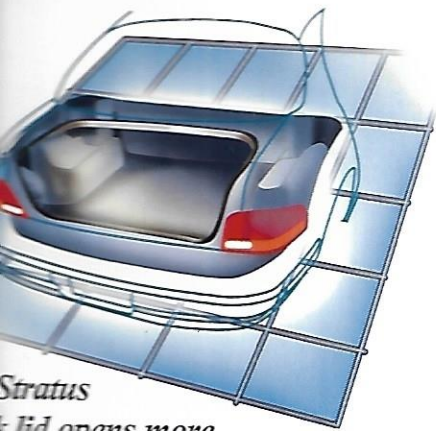


The standard height-adjustable steering column can be positioned for each individual driver's comfort and control. Distinctive white analog gauges (see below) give the Stratus instrument panel a dramatic new look.









Stratus
 The trunk lid opens more
 90 degrees to reveal 15.7
 cubic feet of storage space. Lower
 load height, and recessed hinges leave
 space untouched. Add 95.9
 cubic feet of interior volume for a
 total of 111.6 cubic feet, accessible
 through both the trunk and the side
 door, and fit for every combination
 of business and pleasure.

Always properly secure all cargo before transporting.



**Wheels-to-the-
 corners, cab-
 forward design,**
 a breakthrough concept
 from the team at Dodge, adds
 more than stability — it adds space.

Interior Room	
Trunk room front/rear (in)	38.1/36.8
Trunk room front/rear (in)	42.3/38.1
Trunk room front/rear (in)	52.8/52.7
Trunk room front/rear (in)	55.2/54.7
Trunk load capacity	5
Trunk storage volume (cu ft)	95.9
Trunk storage room (cu ft)	15.7

Stow

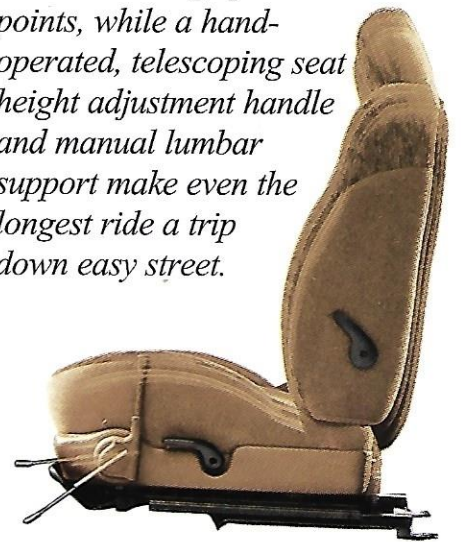


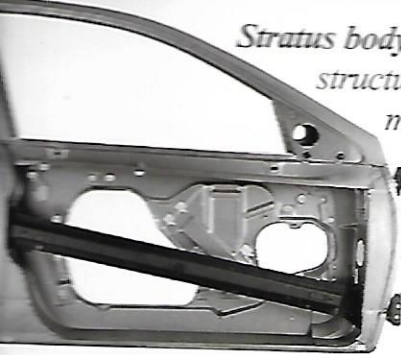
Away.



A locking pushbutton, conveniently located on the interior rear shelf, allows the rear seat to be folded down, combining both trunk and cabin space, and permitting easy loading of Stratus from inside the vehicle.

The driver is in full command of comfort. Computer-aided engineering has identified and eliminated "high pressure" points, while a hand-operated, telescoping seat height adjustment handle and manual lumbar support make even the longest ride a trip down easy street.





Stratus body construction has the structural rigidity necessary to meet federal dynamic side-impact standards. Steel side-guard door beams, front and rear, help absorb energy during side-impact collisions.



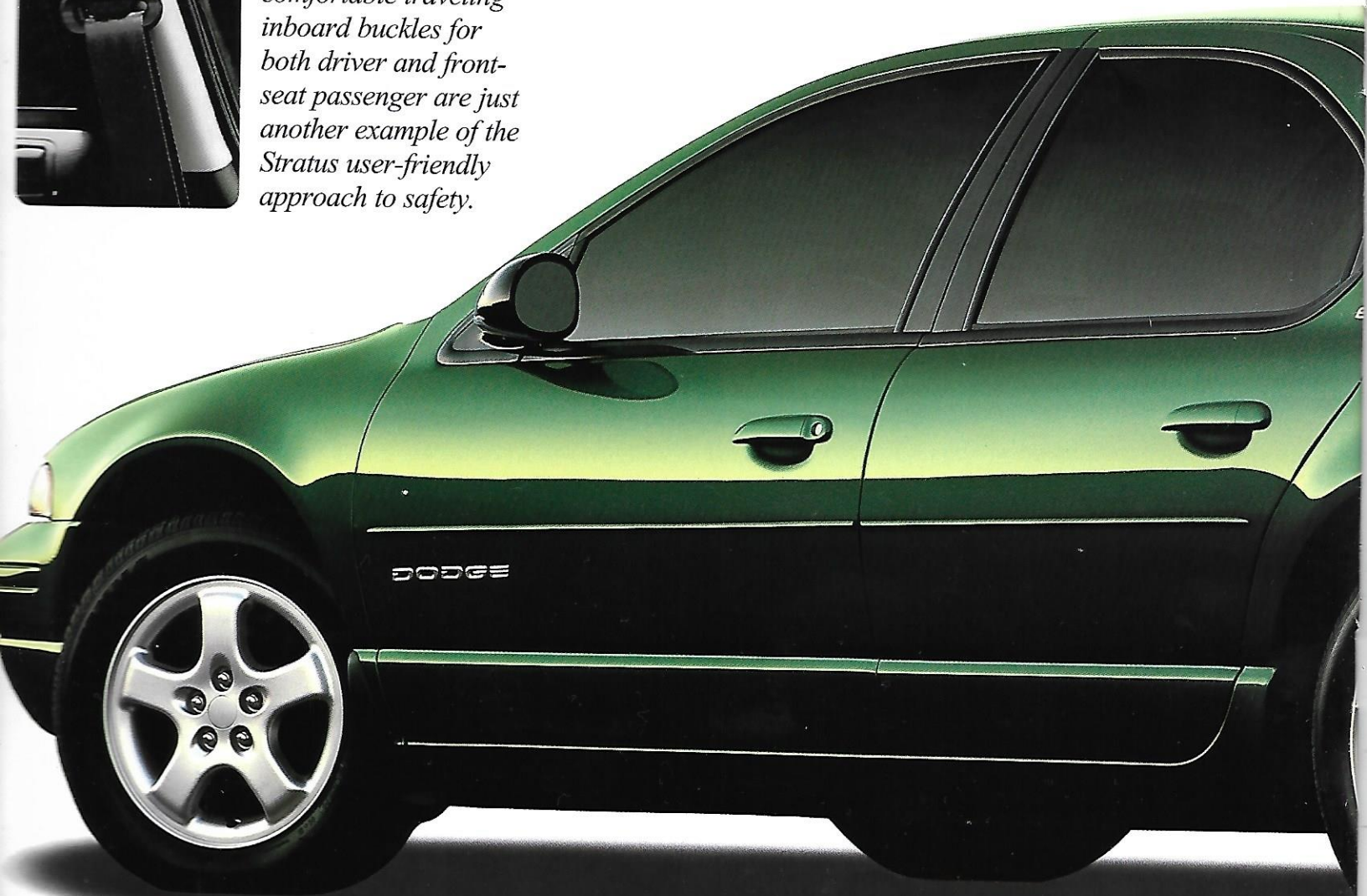
Safety first, last, and always. Standard child-protection rear door locks allow the rear doors to be opened only from the outside when the selector lever is engaged.



Trust com

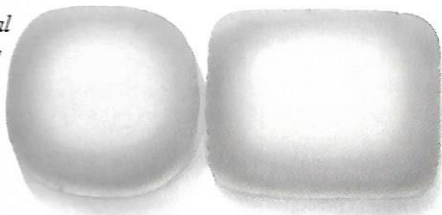


Standard 5-position height-adjustable front seat shoulder belts with comfortable traveling inboard buckles for both driver and front-seat passenger are just another example of the Stratus user-friendly approach to safety.



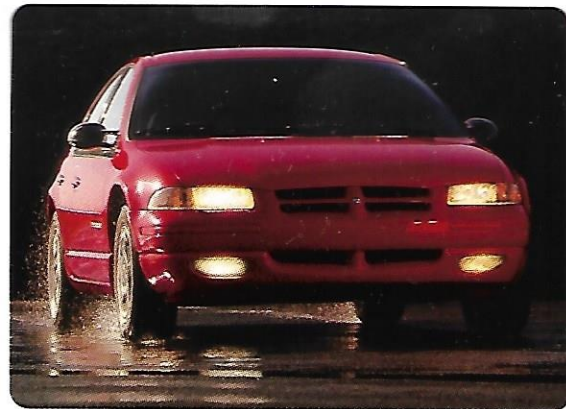
Generation driver and front-passenger air height-adjustable front-seat shoulder belts and seat belt lockers are among the standard safety features in Stratus.

According to the Federal Motor Vehicle Safety Standards that allow for the use of side-impact protective air bags. Always use seat belts. Remember a seat belt is the safest way to travel with children.



Available four-wheel disc antilock brake system* allows steadiness and control, when driving situations make quick, reliable braking an absolute must.

*Available only with the optional V6 engine.



is standard.

An available Security Group, standard on Stratus ES, includes remote keyless entry, illuminated entry, panic alarm and a headlamp timed delay. A vehicle theft security alarm is also available. A new Sentry Key™ Engine Immobilizer System allows Stratus to be started only with the use of one of the two supplied Sentry Keys.



Standard features and options.

Stratus models include:

Seats* — Next Generation driver and front-passenger
Conditioning — Manual temperature controls
Tires — Power, front disc/rear drum
Climate Control Outlets — Rear, beneath front seats
Radio — Digital, integral to all radios
Console — Center with storage armrest and cubby bin
Door Holders — Front (2) rear (2) stowable
Power Window — Electric rear window
Door Locks
 — Manual
 — Child-protection rear
Brake System — Long life, stainless steel
Interior Mats — Front, carpeted
Windows — Tinted, all windows including solar windshield

Instrument Cluster — Analog, includes tachometer
Power Accessory Outlet — 12-volt, located in instrument panel
Seats

Front — Low back buckets with reclining seatbacks and adjustable head restraints

Rear — Bench seat with folding seatback

Shoulder Belts — Height-adjustable front outboard with traveling buckles

Sound System — AM/FM stereo radio with cassette player and 6 speakers

Steering Column — Height-adjustable

Sun Visors — Dual

Suspension — Modified double-wishbone, front high-arm with sway bar; rear, low-arm multilink with sway bar

Tires — Spare, compact

Trunk Lid Release — Remote

Wiper System — Windshield 2-speed with speed-sensitive intermittent mode

*Certified to the Federal Regulations that allow less forceful air bags. Always use seat belts. Remember a backseat is the safest place for children.

Features, options and package groups.

• = Included. P = Available within package noted in parenthesis. O = Optional.

	Stratus		ES	
Engine	Transaxle			
4-liter SOHC 16V 4-Cylinder	5-speed Manual	21A	21B	
4-liter DOHC 16V 4-Cylinder	4-speed Automatic	24A	24B	
4-liter SOHC 24V V6*	4-speed AutoStick®			26R 26S
Roof Rack — Overhead for front and rear passengers (included with optional sunroof on Stratus)			P	•
Brakes — Power, front disc/rear drum with antilock	O	O	•	•
— Power 4-wheel disc with antilock			•	•
Trunk Net — Located in trunk			•	•
Cold Weather Group — Engine block heater and battery heater	O	O	O	O
Door Locks — Power, includes auto speed-sensitive feature			•	•
Door Mats — Rear, carpeted			•	•
Lighting				
— Exterior — Fog lamps			•	•
— Interior — Dual front map lamps with courtesy function (included with optional sunroof on Stratus)			P	•
Map Pocket — Passenger seatback			•	•
Mirrors				
— Exterior — Dual manual remote control, twin-post	•	•	•	•
— Interior — Dual power heated, twin-post			•	•
— Interior — Dual covered visor vanity	•	•	•	•
— Interior — Dual illuminated covered visor vanity (included with optional sunroof on Stratus)			P	•
Seats				
— Fabric — Scroll cloth	•	•	•	•
— Fabric — Jigsaw cloth			•	•
— Fabric — Wanderer leather-trimmed			•	•
— Driver — Driver-side manual seat-height adjuster	•	•	•	•
— Driver — Driver-side manual seat-height adjuster and lumbar support			•	•
— Driver — 8-way power driver			•	•
Security Group — Remote keyless entry, illuminated entry, panic alarm and				
— Headlamp time delay		O	O	•
Smoker's Group — Ashtray and lighter	O	O	O	O
Sound Systems				
— AM/FM stereo radio with CD player, 3-band graphic equalizer and 6 speakers	O	O		
— Premium AM/FM stereo radio with cassette player, changer controls, amplifier and 8 speakers in 6 locations	O	O	O	•
— Premium AM/FM stereo radio with cassette player, changer controls, in-dash 6-disc CD changer and 6 speakers	O	O	O	O
Speed Control — Electronic with steering wheel-mounted controls	• ⁽²⁾	• ⁽²⁾	•	•
Steering — Power-assisted rack-and-pinion			•	•
— Speed-sensitive, power			•	•
Sunroof — Power (includes premium headliner on Stratus)			O	O
Tires — P195/70R14	•	•	•	•
— P195/65R15, all-season			•	•
— Spare, full-size	O	O	O	O
Vehicle Theft Security System — Monitors door, ignition and trunk key cylinders and includes Sentry Key™ Engine Immobilizer			O	O
Wheels — 14" x 6" steel with wheel covers	•	•	•	•
— 15" x 6" aluminum wheels			•	•
Windows — Power with driver's one-touch-down feature			•	•

Colors, models, accessories, wheels, and trim.



Flame Red



Inferno Red



Deep Cranberry



Deep Amethyst



Deep Slate



Stone White



Bright Platinum



Champagne



Light Cypress Green

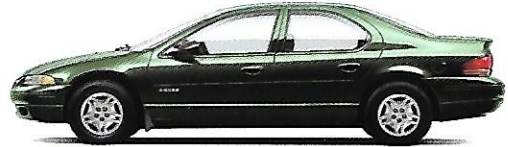


Forest Green

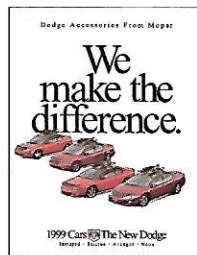
Models



Stratus ES



Stratus



Accessories

High-quality Dodge Accessories from Mopar are specially designed by Dodge engineers to fit your Stratus exactly. For information on Mopar comfort, convenience and appearance accessories, ask your dealer for a copy of the brochure shown here.

Wheels and Wheel Covers

A 14" steel wheel with wheel covers standard on Stratus

B 15" 5-Spoke cast aluminum road wheel standard on Stratus ES

A



B



Fabric and Trim

Dodge Stratus' selection of interior seat coverings includes (from left to right): Scroll Cloth, standard on Stratus (shown in Agate, also available in Camel or Silver Fern); Jigsaw Cloth, standard on Stratus ES (shown in Silver Fern, also available in Agate or Camel); and Leather seating surfaces with vinyl trim, optional on Stratus ES only (shown in only available color, Agate).



We'd like to continue this relationship.

Call Us At: 1-800-4-A-DODGE
Talk to someone who can tell
you what you want to know about
the 1999 Dodge lineup. You can
get product literature, get the
name of a vehicle equipped the way
you like it, and find the Dodge
dealer closest to you.

On the Web: www.4adodge.com
Our award-winning Dodge Web site
provides you with an information
service you can access directly
24 hours a day from the comfort
of your home or office. Pricing,
competitive comparisons, and dealer
information are just a click away.

CustomerOne[®] ★

Chrysler Corporation and its
dealers have made a long-term
commitment to outstanding
customer service. More than
100,000 dealership management,
sales and service people are
participating in the most extensive
educational initiative in automotive
history. It's called Customer One
and it establishes one unbreakable
rule: Treat every customer with the
honesty and respect they deserve.

3/36 Customer One Care[™] Plan
Your Dodge vehicle is covered
by Chrysler Corporation's 3/36
Customer One Care Plan.*

CustomerOne[®] Care

3/36 Bumper-To-Bumper

24-Hour Roadside Assistance

This
coverage
includes
a 3-year
or 36,000-

mile Bumper-To-Bumper Limited
Warranty as well as roadside
assistance for 3 years or 36,000
miles. Call 1-800-521-2779 for
24-hour, 7-day-a-week emergency
road service.[†] A 5-year or 100,000-
mile Outer-Panel Rust-Through
Limited Warranty covers the repair
of exterior sheet metal if perforated
by corrosion. Restrictions apply.
See your dealer for details.

*Excludes wiper blades, clutch and brake linings, brake rotors
and drums, normal maintenance items and tires (covered by their
own manufacturer's warranty).

[†]Road service provided by Cross Country Motor Club, Inc.
(In California, Cross Country Motor Club of California, Inc.)



CHRYSLER
Service Contracts

Be Serious About Service
Additional protection for Dodge
owners is available through
Optional Chrysler Service Contracts.
These service plans are available
in a variety of time and mileage
combinations to meet your driving
needs. Ask your dealer for more
information or call 1-800-442-2666.

Mopar. To keep your
CUSTOMER CARE Dodge vehicle
performing at its optimum, make
sure it's serviced regularly at your
Dodge dealership, where highly-
trained technicians have access to a
complete stock of Mopar replacement
parts and the sophisticated equipment
today's cars demand.

 **CHRYSLER FINANCIAL** Chrysler Financial*

offers a full range of automotive financing which provides flexible terms for qualified buyers. Many of these plans can be customized to fit your particular budget and make your new vehicle even more affordable. They include the College Graduate Program and Gold Key Lease short-term financing. Ask your Sales Consultant for details.

*Chrysler Financial's programs are offered subject to availability and state and local laws.

Chrysler Lease Plans

Chrysler Financial's Gold Key Lease has the flexibility to fit your vehicle choice and your lifestyle. If the idea of driving a new vehicle more often without penalties sounds great, ask about Gold Key Lease.

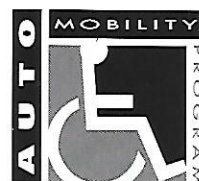


ON THE JOB Commercial operators of eligible

Dodge cars, trucks, and vans can learn about our Dodge "On The Job" program by calling 1-877-ON THE JOB.

Commercial Finance Options

Chrysler Financial's new Commercial Finance Options Program offers special finance and lease options to small and midsize businesses, municipalities, and small fleet operators. "Line of Credit" financing is also available under this program. Please see your dealer for details.



CHRYSLER CORPORATION

Cash reimbursement is available for qualified adaptive driving devices on 1999 Dodge vehicles. Ask your dealer or call Automobility Headquarters at 1-800-255-9877.

Printed in U.S.A. on recycled paper.
8/98 74-383-9918 240M



The New Dodge

We're all about change.

There is no status quo at Dodge. We've transformed the way people drive with new kinds of vehicles that are an embodiment of the latest technologies. Alternate fuels, exotic materials, and new configurations are constantly being explored. Advances in safety technology, suspension systems, engine dynamics, and ergonomics are continually evaluated. Because we know that no matter how fast things change these days, people still want cars and trucks that are good looking, well-built, and exciting to drive. And to ensure that you get all the information you need to make an intelligent purchase, there are automotive experts awaiting your call at 1-800-4-A-DODGE. We've also created a Web site you can visit at anytime from anywhere in the world at: www.4adodge.com.



The New Dodge