

2007 ESCAPE & ESCAPE HYBRID



BOLDMOVES



Escape whenever you want

There's a reason it's called the Escape. Actually, there's a bunch of them. Whether your ideal getaway involves the excitement of sun and sand, or the tranquility of a secluded cabin in the woods, the 2007 Ford Escape is always ready to go. With excellent fuel economy,* cavernous amounts of cargo space and the remarkable capability of its optional Intelligent 4WD System, Escape has clearly earned its inspirational name. Now, take the fun-loving nature of the original and add an innovative hybrid powertrain system that delivers 36 mpg** in city driving. What you get is the Escape Hybrid – proof that it *is* easy being Green.



*EPA-estimated 24 mpg city/29 hwy. with 2.3L I-4 engine with FWD and 5-speed manual transmission; 20 mpg city/24 hwy. with 3.0L V6 with FWD and 4-speed automatic transmission.

**EPA-estimated mpg based on FWD configuration. Actual mileage may vary. See specifications for details.

fordvehicles.com

SPECIFICATIONS **1**

MODEL HIGHLIGHTS

Each series includes the standard equipment of the previous series, except where additions/exceptions are noted.



ESCAPE XLS

Duratec 23-2.3L I-4 engine • 5-speed manual transmission or available 4-speed automatic • 15" styled-steel wheels • Grey molded-in-color front and rear bumpers and bodyside moldings • Black roof side rails • AM/FM stereo/single-CD player with MP3 and SIRIUS Satellite Radio capability • Cloth seats



ESCAPE XLT

4-speed automatic transmission • 16" aluminum wheels • Front fog lamps • Roof side rails with 2 horizontal crossbars • Privacy glass • AM/FM stereo/6-disc in-dash CD changer with MP3 and SIRIUS Satellite Radio capability • Premium cloth seats with 6-way power driver's seat • Cruise control • Perimeter alarm • Floor mats



ESCAPE XLT SPORT

Duratec 30-3.0L V6 engine • 16" bright machined-aluminum wheels • P235/70R16 all-season OWL tires • Body-color front and rear bumpers, bodyside moldings and wheel-lip moldings • Black side step bars, door handles and liftgate molding • Keyless-entry keypad



ESCAPE LIMITED

Monochromatic exterior appearance • Premium leather-trimmed seats • Overhead console with dual storage bins • Automatic headlamps • Auto-dimming rearview mirror • Message center with compass display • Illuminated visor vanity mirrors

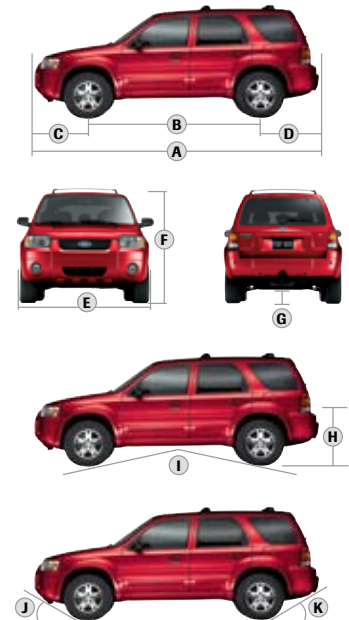


ESCAPE HYBRID

Contains equipment exclusive to Escape Hybrid.

16" aluminum wheels • Fog lamps • Molded-in-color grey front and rear fascias and bodyside cladding • Power Group with power windows, door locks, mirrors and remote keyless-entry system with 2 key fobs • Privacy glass • Roof rack side rails • Premium cloth low-back front bucket seats with map pockets • Premium cloth 60/40 split rear seat with tip-fold-flat latch • AM/FM stereo with 6-disc in-dash CD changer with MP3 and SIRIUS Satellite Radio capability • Floor shifter and console with 2 cupholders and storage bin • Power 6-way driver's seat

DIMENSIONS



EXTERIOR	ESCAPE	ESCAPE HYBRID
A. Overall length	174.9"	174.9"
B. Wheelbase	103.2"	103.2"
C. Overhang — Front	34.0"	34.0"
D. Overhang — Rear	37.7"	37.7"
E. Vehicle width	70.1"	70.1"
F. Height with roof rack	69.7"	69.9"
G. Ground clearance (min.)	8.2"	8.4"
H. Loadfloor height*	29.9"	30.3"
I. Ramp breakover angle*	20.8°	21.2°
J. Angle of approach*	20.8°	21.4°
K. Angle of departure*	28.1°	28.7°
*May vary by model.		
INTERIOR		
Front		
Head room	40.4"	40.4"
Shoulder room	56.3"	56.3"
Hip room	53.2"	53.2"
Leg room (max.)	41.6"	41.6"
Rear		
Head room	39.2"	39.2"
Shoulder room	55.9"	55.9"
Hip room	49.1"	49.1"
Leg room (max.)	35.6"	35.6"
Cargo Volume (cu. ft.)		
Behind 1st row - With 2nd row folded and bottom cushion removed	66.3	65.5
Behind 1st row	62.8	62.1
Behind 2nd row	29.3	27.6

ESCAPE SPECIFICATIONS

STANDARD FEATURES

MECHANICAL

4-wheel independent suspension
 100,000-mile tune-up interval*
 Front-wheel drive
 Fuel tank – 16.5-gallon capacity
 Intelligent 4WD System (4WD models only)
 Power rack-and-pinion steering
 Stabilizer bar – Front
 Unibody construction

SAFETY/SECURITY

3-point safety belt restraint system for all seating positions
 4-wheel Anti-lock Brake System (ABS)
 Adjustable head restraints at all seating positions
 Battery saver with headlamps-off delay
 Belt-Minder® safety belt reminder
 Brake/shift interlock with automatic transmission
 Fuel pump inertia shutoff switch
 Headlamps-on alert chime
 Height-adjustable shoulder safety belts – Front
 Key-in-ignition alert chime
 LATCH system for child-safety seats – Rear-outboard positions
 Personal Safety System®**
 Remote keyless-entry system with 2 key fobs
 SecurILock® passive anti-theft system
 Side-intrusion door beams
 Tire Pressure Monitoring System (TPMS)

SEATING

Dual, reclining front bucket seats
 60/40 split-folding rear seats
 Removable rear-seat cushion

INTERIOR

Accessory delay for power windows
 Air conditioning
 Assist handles – 2 front, 2 rear†
 Cargo area floor hooks (4)
 Floor console – Storage bin and dual cupholder with removable insert
 Glove compartment with lock
 Head restraints – Adjustable (5)
 Illuminated-entry system
 Power door locks with child-safety rear door locks
 Power point – Front console
 Power windows – With one-touch-down driver's-side feature
 Rear floor heat ducts
 Tachometer
 Tilt steering wheel
 Visor vanity mirrors – Dual, covered

EXTERIOR

Grille – Black surround with black mesh center
 Headlamps – Aerodynamic halogen clear-lens
 Liftgate with flip-up glass
 Mirrors – Power sideview with manual-fold feature
 Rear-window defroster
 Roof side rails (with crossbars on XLT, XLT Sport and Limited)
 Solar-tinted glass (door, quarter windows and rear window)
 Windshield wipers – Front: variable-intermittent with washer;
 rear: 2-speed with washer

*Under normal driving conditions with routine fluid and filter changes.
 **Always wear your safety belt and secure children in the rear seat.
 †Rear assist handles not available with Safety Package.

FEATURES & OPTIONS

XLS MANUAL – FWD or 4WD

XLS – FWD or 4WD

XLT – FWD or 4WD

XLT SPORT – FWD or 4WD

LIMITED – FWD or 4WD

MECHANICAL

●	●	●	—	—	
—	—	○	●	●	Duratec 23–2.3L I-4 engine
●	—	—	—	—	Duratec 30–3.0L V6 engine
—	●	●	●	●	5-speed manual transmission
●	●	—	—	—	4-speed automatic transmission
○	○	—	—	—	15" styled-steel wheels
—	—	●	—	—	15" aluminum wheels
—	—	○	●	●	16" aluminum wheels
—	—	○	○	○	16" bright machined-aluminum wheels
●	●	—	—	—	Full-size spare – Wheel and tire
—	—	○	○	○	P225/75R15 all-season BSW tires
●	●	○	—	—	P235/70R16 all-season BSW tires (XLT FWD only)
—	—	○	●	—	P235/70R16 all-season OWL tires (XLT: optional on FWD; standard on 4WD)
●	●	○	○	○	Power front disc/rear drum brakes (FWD only on XLT, XLT Sport and Limited)
—	—	○	○	○	Power 4-wheel disc brakes (V6 4WD only)

SAFETY/SECURITY

○ ○ ○ ○ ○ Safety Package – Includes Safety Canopy™ System (side-curtain airbags with rollover sensor for both rows of seating) and front-seat side airbags

SEATING

●	●	—	—	—	Cloth trim
—	—	●	●	—	Cloth trim – Premium-grade
—	—	○	—	●	Leather Comfort Group – Includes leather-trimmed seats and leather-wrapped steering wheel (premium leather on Limited)
—	—	●	●	●	6-way power driver's seat
—	—	●	●	●	Driver and front-passenger seatback map pockets

INTERIOR

●	●	—	—	—	AM/FM stereo/single-CD player, clock and 4 speakers with MP3 and SIRIUS Satellite Radio†† capability
—	—	●	●	●	AM/FM stereo with 6-disc in-dash CD changer, clock and 4 speakers with MP3 and SIRIUS Satellite Radio capability
—	—	○	○	○	AM/FM Audiophile® Sound System with 6-disc in-dash CD changer, clock and 7 speakers (including an 8" subwoofer) with MP3 and SIRIUS Satellite Radio capability
—	—	—	—	●	Auto-dimming rearview mirror
○	○	○	○	○	Cargo Convenience Group – Includes cargo area retractable cover and storage bin
○	○	●	●	●	Convenience Group – Includes steering wheel-mounted cruise control, perimeter alarm, and front and rear carpeted floor mats
●	—	—	—	—	Floor console – Flow-through with manual transmission short-throw floor shifter, storage bin and dual cupholder with removable inserts
—	●	●	●	●	Floor console – Flow-through with automatic transmission floor shifter, storage bin and dual cupholder with removable inserts
—	—	—	—	○	Luxury Comfort Package - Audiophile Sound System with 6-disc in-dash CD changer, clock and 7 speakers (including an 8" subwoofer) with MP3 and SIRIUS Satellite Radio capability - Premium leather-trimmed seats with perforated inserts - Heated front seats - Heated sideview mirrors - Reverse Sensing System

††Dealer-installed option. SIRIUS not available in Alaska or Hawaii. See your Ford Dealer or contact SIRIUS at 1-888-539-7474 for more information.

Horsepower, torque, fuel economy numbers and comparisons based on 2006 competitive models, publicly available information and Ford certification data at time of printing. Some features discussed may be optional. Vehicles shown may contain optional equipment. Features shown may be offered only in combination with other options or subject to additional ordering requirements or limitations. Dimensions shown may vary due to optional features and/or production variability. Following publication of the catalog, certain changes in standard equipment, options and the like, or product delays may have occurred which would not be included in these pages. Your Ford Dealer is the best source for up-to-date information. Ford Division reserves the right to change product specifications at any time without incurring obligations.

FEATURES & OPTIONS

XLS MANUAL – FWD or 4WD					
XLS – FWD or 4WD					
XLT – FWD or 4WD					
XLT SPORT – FWD or 4WD					
LIMITED – FWD or 4WD					
INTERIOR (continued)					
—	—	—	—	●	Message center with compass display
—	—	—	—	●	Overhead console with dual storage bins (not available with power moonroof)
—	—	●	●	●	Painted-warm-steel finish on instrument panel and front-door switch bezels
—	—	—	—	●	Visor vanity mirrors – Illuminated
EXTERIOR					
—	—	—	—	●	Automatic headlamps
●	●	●	—	—	Bumpers and bodyside moldings – Grey molded-in-color
—	—	—	●	●	Bumpers, bodyside moldings and wheel-lip moldings – Body-color-painted
—	—	—	●	●	Fog lamps – Front, round
—	—	—	●	●	Keyless-entry keypad
●	●	●	●	—	Liftgate molding and door handles – Black molded-in-color
—	—	—	—	●	Liftgate molding and door handles – Body-color-painted
—	—	—	○	○	Power moonroof with sunshade and mini-overhead console
—	—	●	●	●	Privacy glass (rear doors, quarter windows and rear window)
○	○	●	●	●	Roof-rail crossbars
○	○	○	●	—	Side step bars* – Black
—	—	○	○	○	Trailer Tow Package – Includes Class II 3500-lb. receiver and trailer wiring harness with 4-pin connector (XLT V6 only)
—	—	○	—	—	XLT Appearance Package** - 16" bright machined-aluminum wheels - Painted-Silver Metallic fascias, bodyside cladding and wheel-lip moldings

● Standard ● Select Availability ○ Optional — Not Available

*Requires 15" aluminum wheels on XLS models. **Requires Duratec 30-3.0L V6 engine.

Audiophile is a registered trademark of Audiophile, Inc.

WHEELS



15" Styled-Steel
Standard on XLS Manual
and XLS



15" Aluminum
Optional on XLS Manual
and XLS



16" Aluminum
Standard on XLT
OWL tires standard on 4WD,
optional on FWD



16" Bright
Machined-Aluminum
Standard on
XLT Sport/Limited
OWL tires standard on XLT Sport

ENGINES

	HORSEPOWER (hp @ rpm)	TORQUE (lb.-ft. @ rpm)	TOWING CAPACITY ¹ (lbs.)
Duratec 23-2.3L I-4	153 @ 5800	152 @ 4250	1500
Duratec 30-3.0L V6	200 @ 6000	193 @ 4850	3500 ^{1†}

¹Maximum capacity shown is for properly equipped vehicle with required equipment and a 150-lb. driver. Weight of additional options, equipment, passengers and cargo must be deducted from this weight. For additional information, see your Ford Dealer. ^{††}With Class II Trailer Tow Package.

EPA-ESTIMATED FUEL ECONOMY (mpg)

ENGINE	TRANSMISSION	CITY	HWY.
Duratec 23-2.3L I-4 – FWD	5-speed manual	24	29
	4-speed automatic	23	26
Duratec 23-2.3L I-4 – 4WD	5-speed manual	22	27
	4-speed automatic	21	24
Duratec 30-3.0L V6 – FWD	4-speed automatic	20	24
Duratec 30-3.0L V6 – 4WD	4-speed automatic	19	23

THE 5-YEAR/60,000-MILE POWERTRAIN WARRANTY

New Vehicle Limited Warranty
We want your Ford Escape or Escape Hybrid ownership experience to be the best it can be. So under this warranty, your new vehicle comes with 3-year/36,000-mile Bumper-to-Bumper Coverage, 5-year/50,000-mile Safety Restraint Coverage, and 5-year/unlimited-mile Corrosion (Perforation) Coverage – all with no deductible. Escape Hybrid is also covered by an 8-year/100,000-mile Hybrid Limited Warranty¹. Please ask your Ford Dealer for copies of these limited warranties.

For more assurance: There's now a 5-year/60,000-mile powertrain limited warranty that's fully transferable, has no deductible, and provides you with an additional 2 years or 24,000 miles of coverage – on select components, including the engine and transmission – beyond the standard 3-year/36,000-mile Bumper-to-Bumper Coverage. Plus, Roadside Assistance is extended to 5 years or 60,000 miles, so you have the security of knowing that help may be only a phone call away should you run out of fuel, lock yourself out of the vehicle, or need towing. Your Ford Dealer can provide complete details on all of these advantages.

¹10-year/150,000-mile Hybrid Battery Limited Warranty in California, Maine, Massachusetts, New York and Vermont. See dealer for details.

Ford Credit Get the ride you want. Whether you plan to lease or finance, you'll find the choices that are right for you at Ford Credit. Ask your Ford Dealer for details, or check us out at www.fordcredit.com.

Ford Motor Company Insurance Services Get Ford Motor Company quality in your auto insurance. Our program offers industry-leading benefits and competitive rates. Call 1-877-367-3847, or visit us at www.fordvip.com for a no-obligation quote. Insurance offered by American Road Services Company (in CA, American Road Insurance Agency), a licensed agency and subsidiary of Ford Motor Company.

Ford EXTENDED SERVICE PLAN For a purchase or lease, the Ford **Extended Service Plan** (ESP) gives you "Peace-of-Mind" protection designed to cover key vehicle components and protect you from the cost of unexpected repairs. Ask your dealer for an ESP, the only service contract backed exclusively by Ford and honored at all Ford Lincoln Mercury dealerships.

GENUINE FORD ACCESSORIES Genuine Ford Accessories are designed and engineered specifically for Ford vehicles. Visit our www.fordaccessoriesstore.com website at www.fordaccessoriesstore.com to use the Accessorizer, and to learn about complete accessory details and purchase instructions.

ESCAPE HYBRID SPECIFICATIONS

STANDARD FEATURES

MECHANICAL

2.3L I-4 Atkinson-cycle engine with Permanent-Magnet AC-synchronous electric motor
330-volt sealed nickel-metal-hydride (NiMH) battery
Regenerative Braking System
Electronically controlled Continuously Variable Transmission (eCVT)
4-wheel independent suspension
Electric Power-Assisted Steering (EPAS)
Intelligent 4WD System on 4WD-equipped vehicles
Power 4-wheel disc brakes with Anti-lock Brake System (ABS)
Steering wheel-mounted cruise control

SAFETY/SECURITY

Airbags* – Dual-stage driver and single-stage front-passenger with Front-Passenger Sensing System
Battery saver with headlamps-off delay
Belt-Minder® safety belt reminder
Child-safety rear door locks
Driver and front-passenger safety belt pretensioners and height-adjustable D-rings
LATCH – Lower anchors and tether anchors for child-safety seats (rear-outboard positions)
Mini-size spare wheel and tire (underbody-mounted) with wheel-nut wrench and jack
Perimeter alarm
Safety belt restraint system – 3-point safety belt system at all seating positions
Side-intrusion door beams
Tire Pressure Monitoring System (TPMS)

SEATING

Front seats – Premium cloth low-back buckets with map pockets
Power 6-way driver's seat
Rear seats – Premium cloth 60/40 split seats with tip-fold-flat latch

INTERIOR

Air conditioning – Manual
AM/FM stereo with 6-disc in-dash CD changer and 4 speakers with MP3 and SIRIUS Satellite Radio capability
Assist handles – 2 in 1st row, 2 in 2nd row (1st row only with Safety Package option)
Center dome light with map lights and cargo area light
Floor mats – Front, color-keyed carpeted
Floor shifter and console with 2 cupholders and storage bin
Locking glove compartment
Power Group – Power windows, door locks, mirrors and remote keyless-entry system with 2 key fobs
Power point with cap in floor console
Visor vanity mirrors

EXTERIOR

16" aluminum wheels
P235/70R16 all-season BSW tires
Fog lamps
Grey molded-in-color front and rear fascias and bodyside cladding
Privacy glass
Roof rack side rails – Black

WARRANTY

3-year/36,000-mile Bumper-to-Bumper Limited Warranty**
8-year/100,000-mile Hybrid Limited Warranty**

OPTIONAL FEATURES & PACKAGES

Appearance Package – Painted-Silver Metallic fascias, bodyside cladding and wheel-lip moldings; body-color door handles and liftgate appliqué (not available with Premium Package)
Floor mats – Rear
Hybrid Energy/Navigation/Audiophile® System
Leather Comfort Group – Includes leather-trimmed seats and leather-wrapped steering wheel
Power moonroof (available only when Premium Package is ordered)
Power outlet – 110-volt AC in front console
Premium Package – Monochromatic exterior appearance, premium leather-trimmed seats, heated front seats, leather-wrapped steering wheel, automatic headlamps, illuminated visor vanity mirrors, heated sideview mirrors, Reverse Sensing System, Hybrid Energy/Navigation/Audiophile System, 110-volt AC power outlet, retractable cargo area cover and rear floor mats
Safety Package – Includes Safety Canopy™ System (side-curtain airbags with rollover sensor for both rows of seating) and front-seat side airbags

*Always wear your safety belt and secure children in the rear seat. **10-year/150,000-mile Hybrid Battery Limited Warranty in California, Maine, Massachusetts, New York and Vermont. See dealer for details.

HYBRID SYSTEM POWER RATINGS

NET HORSEPOWER 155

2.3L I-4 ENGINE

Horsepower @ rpm 133 @ 6000 Torque (lb.-ft. @ rpm) 124 @ 4250

ELECTRIC MOTOR

Horsepower @ rpm 94 @ 5000

EPA-ESTIMATED FUEL ECONOMY (mpg)[†]

FWD 36 city/31 hwy.

4WD 32 city/29 hwy.

[†]Actual mileage will vary.

HYBRID WHEELS



16" Aluminum

EXTERIORS



Oxford White



Dune Pearl Metallic*



Redfire Metallic*



Titanium Green Metallic



Vista Blue Metallic



Silver Metallic*



Tungsten Grey Metallic*



Black*



Blazing Copper Metallic**



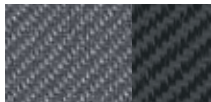
Dark Stone Metallic**

*Available with the Premium Package. **Not available on Escape Hybrid. Ford uses clearcoat paint for beauty and protection. Colors shown are representative only. Not all colors are available on all models. See your dealer for actual paint/trim options. Vehicles shown may contain optional equipment.

INTERIORS



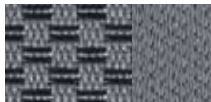
Medium/Dark Pebble Cloth
Standard on XLS Manual and XLS



Medium/Dark Flint Cloth
Standard on XLS Manual and XLS



Medium Pebble Premium Cloth
Standard on XLT and Hybrid



Medium Flint Premium Cloth
Standard on XLT and Hybrid



Medium/Dark Pebble
Unique Premium Cloth
Standard on XLT Sport



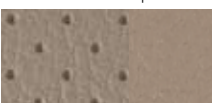
Medium/Dark Flint
Unique Premium Cloth
Standard on XLT Sport



Medium Pebble Leather
Optional on XLT and Hybrid



Medium Flint Leather
Optional on XLT and Hybrid



Medium Pebble Premium
Leather with Perforated Inserts
Standard on Limited



Ebony Black Premium Leather
with Perforated Inserts
Standard on Limited



Dark Flint Premium Leather with Perforated Inserts
Standard with Premium Package

		MEDIUM PEBBLE	
		MEDIUM FLINT	
		EBONY BLACK	
		XLS/XLT	
●	●		Oxford White
●	●		Dune Pearl Metallic [†]
●	●		Redfire Metallic
●	●		Titanium Green Metallic
●	●		Vista Blue Metallic [†]
●	●		Silver Metallic
●	●		Tungsten Grey Metallic [†]
●	●		Black
●	●		Blazing Copper Metallic
●	●		Dark Stone Metallic [†]
		XLT APPEARANCE PACKAGE	
●	●		Oxford White
●	●		Redfire Metallic
●	●		Titanium Green Metallic
●	●		Vista Blue Metallic [†]
●	●		Tungsten Grey Metallic
●	●		Black
●	●		Blazing Copper Metallic
		XLT SPORT	
●	●		Dune Pearl Metallic [†]
●	●		Redfire Metallic
●	●		Silver Metallic
●	●		Tungsten Grey Metallic [†]
●	●		Black

		MEDIUM PEBBLE	
		MEDIUM FLINT	
		EBONY BLACK	
		LIMITED	
●	●		Dune Pearl Metallic [†]
●	●		Redfire Metallic
●	●		Silver Metallic
●	●		Tungsten Grey Metallic [†]
●	●		Black
		HYBRID	
	●		Oxford White [§]
	●		Dune Pearl Metallic [†]
	●		Redfire Metallic
	●		Titanium Green Metallic [§]
	●		Vista Blue Metallic ^{†§}
	●		Silver Metallic
	●		Tungsten Grey Metallic [†]
	●		Black

[†]New for 2007. [§]Not available with Premium Package.