

2011 ESCAPE+HYBRID



ford.com



Drive one.



Fuel-sipping,
fun-loving,
adventure seekers.

Escape XLT in Sangria Red Metallic with available equipment

With up to **34 mpg city**, Escape Hybrid is the **most fuel-efficient SUV in America.**¹ The standard 2.5L I-4 engine on Escape gets **28 mpg hwy.**² Both offer the capability of available intelligent 4WD and tons of smart technology including our latest available **Ford SYNC®** voice-activated, in-vehicle connectivity system and available **active park assist**, which helps you parallel park in as little as 24 seconds, leaving you more time for adventure.

¹EPA-estimated 34 city/31 hwy/32 combined mpg for Escape Hybrid FWD. Actual mileage will vary. Excluding vehicles built for Mazda. ²EPA-estimated 23 city/28 hwy/25 combined mpg for Escape FWD with 2.5L I-4 and 5-speed manual; 21 city/28 hwy/23 combined mpg for Escape FWD with 2.5L I-4 and 6-speed automatic.

2011 **ESCAPE+HYBRID**

ford.com



Drive one.



Escape Hybrid Limited in Lime Squeeze Metallic with available equipment

34 mpg city

Escape Hybrid: the most fuel-efficient SUV in America.¹

Seriously. Escape Hybrid gets up to **34 mpg city** and 31 hwy.¹ In fact, the powertrain is so self-sufficient, it actually **recharges itself**. The 2.5L I-4 Atkinson-cycle engine works with the electric traction motor to move you with **177 net horsepower**. When you apply the brakes during normal driving, the Regenerative Braking System captures kinetic energy from your braking to recharge the 330-volt battery pack. The battery pack then supplies energy to drive in **100% electric mode up to 44 mph**. When passing or merging, hybrid drive mode delivers an extra power boost for lively acceleration performance while still delivering lower average fuel costs. It's the best of both worlds.

¹EPA-estimated 34 city/31 hwy/32 combined mpg for Escape Hybrid FWD. Actual mileage will vary. Excluding vehicles built for Mazda.

2011 **ESCAPE+HYBRID**

ford.com



Drive one.



Escape XLT in Ingot Silver Metallic with available equipment

Intelligent 4WD gets you out there.

With fully independent suspensions and outstanding clearance, both Escape and Escape Hybrid are **naturally nimble** enough to drive up and over some formidable obstacles that some others will have to waste time driving around. If you prefer the road less traveled, go for the optional **intelligent 4WD**. Always on and always working, it automatically monitors traction 200 times per second (much faster than any person could) and adjusts torque distribution as needed to give you **maximum grip**. It's got serious skills.

2011 ESCAPE+HYBRID

ford.com



Drive one.



Escape Limited in White Suede with available equipment

Active park assist is your street-side advantage.

Quicker and more user-friendly than a luxury brand's competitive system,¹ our available active park assist helps you **conquer parallel parking** in as little as **24 seconds**. Just press a button and drive by potential spots. Ultrasonic sensors help you find a spot that's big enough, and the system lets you know when it's ready to park. You remove your hands from the steering wheel and respond to system prompts by shifting gears and controlling vehicle speed with the brake and accelerator pedals. The system handles the hard part: **automatically steering the vehicle** into the spot. It's bound to be your new best friend.



MyKey® encourages smart driving.

The industry-first, Ford-exclusive MyKey owner controls feature – standard on all models for 2011 – lets you assign **separate keys for additional drivers**, all coded to **enforce your specific restrictions** on vehicle functions like top speed and audio volume. When activated, MyKey encourages smart driving behavior by muting audio until safety belts are buckled, prohibiting the shutoff of key accident-avoidance features like AdvanceTrac® with RSC® (Roll Stability Control™), and more.

¹Based on head-to-head comparison of Ford Escape versus Lexus LS 460 L conducted by Ford Motor Company.

2011 **ESCAPE+HYBRID**

ford.com



Drive one.



Escape Limited in Tuxedo Black Metallic with available equipment

Engines flex, tow, sip and go.

Escape's available **Duratec® 30-3.0L V6** engine is **Flex Fuel** capable, so you can run it on gasoline, E85 (85% ethanol and 15% gasoline), or any blend of the 2. Mated to an efficient 6-speed automatic transmission, it cranks out **240 horsepower** and tows up to **3,500 lbs.** when properly equipped.

Whether you pair it with the standard 5-speed manual transmission or the available 6-speed automatic, the standard **Duratec 25-2.5L I-4** engine delivers a remarkable **28 mpg hwy!**¹ It also supplies a spirited 171 horsepower and 171 lb.-ft. of torque.

Our industry-first **Easy Fuel® capless fuel filler**, standard on all models, automatically seals shut when you remove the fuel nozzle. There's no cap. So you just **gas up and go.** It also helps reduce evaporative emissions.

¹Based on EPA-estimated 23 city/28 hwy/25 combined mpg for Escape FWD with 2.5L I-4 and 5-speed manual; 21 city/28 hwy/23 combined mpg for Escape FWD with 2.5L I-4 and 6-speed automatic.

2011 **ESCAPE+HYBRID**

ford.com



Drive one.



Escape Limited in Charcoal Black with available equipment



SYNC. Say the word.

Voice-activated **Ford SYNC®** is an award-winning, available system that works with your paired Bluetooth®-enabled mobile phone and your digital media player. It provides hands-free calling, plays music, delivers Vehicle Health Reports and 911 Assist.™ With the touch of a button and voice commands, SYNC with **Traffic, Directions and Information** services provides turn-by-turn directions, personalized traffic alerts and more.¹ **SyncMyRide.com** has the latest details.

¹Driving while distracted can result in loss of vehicle control. Only use mobile phones and other devices, even with voice commands, when it is safe to do so. Traffic alerts and turn-by-turn directions available in select markets. Standard text messaging and data rates apply.



A truly illuminating experience.

The available **Navigation System** (shown) features a vibrant 6.5-in. LCD touch screen and colorful maps that you can zoom and scroll. This system plays DVDs while Escape is in Park and provides nearly 10 gigs of photo and music storage space. It also includes an introductory 6-month subscription to **SIRIUS Traffic™** and **SIRIUS Travel Link™**,² which provides fuel prices, weather reports, movie listings, sports scores and more. All this, in addition to over 130 channels of SIRIUS® Satellite Radio.

²Some features unavailable while driving. Subscription required after introductory 6 months expire.

2011 **ESCAPE+HYBRID**

ford.com



Drive one.



Escape Limited in Charcoal Black with available equipment

Designed to support, comfort and shine.

Escape is just the **right size** – inside and out. Its comfort-designed seats easily accommodate as many as **5 adults**. Supple leather-trimmed seating (shown above) with **heated front seats**, plus gleaming chrome and Ebony Black interior accents, are standard on Escape Limited and Hybrid Limited.



The use of environmentally friendly, **soy-based foam** in the seat cushions on every Escape model helps conserve limited resources and reduce CO₂ emissions. Escape Hybrid and XLT also feature **sustainable cloth-trimmed seating** made with 100% post-industrial materials – recycled plastics and polyester fibers that would otherwise have ended up in landfills.

2011 **ESCAPE+HYBRID**

ford.com



Drive one.



Plenty of space for your latest challenge.

A. With the rear seats folded flat, Escape delivers up to **67.2 cu. ft.** of wide-open space. And even with the seats up, you still get up to 31.4 cu. ft. of space to fill with everything you need.

B. Escape Hybrid is uniquely equipped with a **110-volt power outlet**.¹ Use it to charge your laptop, personal gaming system, or other portable electronics.

C. Inside the standard **floor console**: a 3-tier storage system, 2 removable bins, and a hidden storage area deep enough for a laptop or purse.

D. This **hidden, lockable wet trunk** is perfect for keeping valuables out of sight. It's found in the available Cargo Package, along with a retractable cargo area cover and a 100-lb.-capacity roof rack.

E. Tip-fold-flat latches make it easy to configure the standard **60/40 split-fold rear seats** to fit your immediate gear-hauling needs.

¹See your owner's guide for complete details.



2011 ESCAPE+HYBRID

ford.com



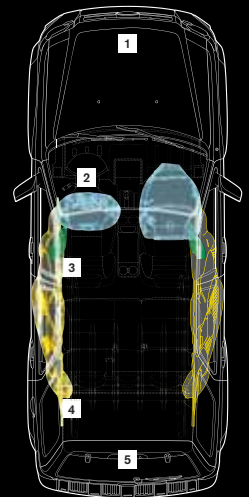
Drive one.



Escape XLT in Sterling Gray Metallic with available equipment

Simply tops in safety. ★★★★★

The 2010 Escape and Escape Hybrid both received **5-Star ratings**¹ in the National Highway Traffic Safety Administration's (NHTSA) frontal and side-impact crash tests. This year, each comes equipped with a long list of cutting-edge safety features designed to help provide continued peace of mind. **1 – AdvanceTrac® with RSC® (Roll Stability Control™)** is the only electronic stability control system in the class that utilizes 2 gyroscopic sensors to help keep all 4 wheels firmly planted.² **2 – Personal Safety System™** features dual-stage front airbags for the driver and front passenger. **3 – Front-seat side airbags** increase protection for the driver and front passenger in certain side-impact collisions. **4 – Safety Canopy® System** includes side-curtain airbags and a rollover sensor. **5 – SOS Post-Crash Alert System™** flashes the hazard lights and sounds the horn after airbag deployment or safety belt pretensioner activation in certain collisions.³ All standard. And those are just the highlights.



¹2010 model year. 2011 model year to be tested. Star ratings are part of the U.S. Department of Transportation's Safercar.gov program (www.safercar.gov).
²Class is Small SUVs. Remember that even advanced technology cannot overcome the laws of physics. It's always possible to lose control of a vehicle due to inappropriate driver input for the conditions. ³SOS hardware may become damaged or the battery may lose power in a crash, which could prevent operation. Not all crashes will activate an airbag or safety belt pretensioner.

2011 ESCAPE+HYBRID

ford.com



Drive one.

Standard Features

Mechanical

4-wheel independent suspension
17.5-gallon fuel tank capacity (15.1-gallon on Escape Hybrid)
90,000-mile tune-up interval ¹
Electric power-assisted steering
Front and rear stabilizer bars
Front-wheel drive (FWD)
Power front disc/rear drum brakes with Anti-Lock Brake System (ABS)

Seating

Front bucket seats
60/40 split-fold rear bench seat with tip-fold-flat latches

Interior

2 powerpoints (1 in each row)
Air conditioning
Auxiliary audio input jack
Covered visor vanity mirrors
Cruise control
Floor console with removable interior bins and 4 cupholders
Illuminated Entry System
Power door locks with child-safety rear door locks
Power windows with one-touch-down driver's side window feature
Rear floor air ducts
Tachometer
Tilt steering column

Exterior

Easy Fuel [®] capless fuel filler
Liftgate with flip-up glass
Power sideview mirrors with integrated blind spot mirrors and manual fold-away design
Rear-window defroster
Solar-tinted glass
Windshield wipers – Front: variable-intermittent with washer; rear: 2-speed with washer

Safety & Security

3-point safety belt restraint system for all seating positions
Adjustable head restraints at all 5 seating positions
AdvanceTrac [®] with RSC [®] (Roll Stability Control [™])
Belt-Minder [®] front safety belt reminder
Brake/shift interlock (with automatic transmission)
Front height-adjustable shoulder safety belts
Front-seat side airbags ²
Integrated keyhead transmitter remotes (2)
LATCH – Lower anchors and tether anchors for child-safety seats (rear seating positions)
MyKey [®] owner controls feature
Personal Safety System [™] with dual-stage front airbags ²
Safety Canopy [®] System with side-curtain airbags ² and rollover sensor
SecuriLock [®] Passive Anti-Theft System
Side-intrusion door beams
SOS Post-Crash Alert System [™]
Tire Pressure Monitoring System (excludes spare)

Dimensions & Capacities

Exterior	Escape/Hybrid FWD (4WD)
Wheelbase	103.1"
Length	174.7"
Height – Without options	67.9" (67.8")/67.7"
Width – Excluding mirrors	71.1"
Width – Including mirrors	81.3"
Width – Mirrors folded	77.9"
Minimum running ground clearance	8.4"/8.3"
Liftover height	29.6"/29.4" (29.5")/(29.6")
Overhang – Front	33.7"
Overhang – Rear	37.8"
Ramp breakover angle	19.0° (18.9°)/18.7°
Angle of approach	19.4°/19.5° (19.3°)/(19.6°)
Angle of departure	28.3°/27.8° (27.7°)

Interior – Front

Head room	40.4"
Shoulder room	56.6"
Hip room	53.3"
Leg room	41.6"

Interior – Rear

Head room	39.2"
Shoulder room	55.9"
Hip room	49.1"
Leg room	35.5"

Cargo Volume (cu. ft.)

Behind front seats	67.2/66.4
Behind rear seats	31.4/30.9

Horsepower, Torque & EPA-Estimated Fuel Economy³

GAS-POWERED ESCAPE

Duratec 25–2.5L I-4 Engine

Horsepower	171 @ 6,000 rpm
Torque (lb.-ft.)	171 @ 4,500 rpm
5-speed manual (XLS)	23 city/28 hwy/25 combined mpg
6-speed automatic	
FWD (XLS, XLT, Limited)	21 city/28 hwy/23 combined mpg
4WD (XLS, XLT, Limited)	20 city/26 hwy/22 combined mpg

Duratec 30–3.0L V6 FFV Engine

Horsepower	240 @ 6,550 rpm
Torque (lb.-ft.)	223 @ 4,300 rpm
6-speed automatic	
FWD (XLT, Limited)	19 city/25 hwy/21 combined mpg
4WD (XLT, Limited)	18 city/23 hwy/20 combined mpg

GAS-ELECTRIC-POWERED ESCAPE HYBRID

Net horsepower	177
2.5L I-4 Atkinson-Cycle Engine	
Horsepower	155 @ 6,000 rpm
Torque (lb.-ft.)	136 @ 4,500 rpm
Permanent-Magnet AC-Synchronous Electric Motor	
Horsepower	94 @ 5,000 rpm
Electronically controlled continuously variable transmission (eCVT)	
FWD (Hybrid, Hybrid Limited)	34 city/31 hwy/32 combined mpg
4WD (Hybrid, Hybrid Limited)	30 city/27 hwy/29 combined mpg

Dimensions may vary by trim level.
Cargo and load capacity limited by weight and weight distribution.

New Vehicle Limited Warranty. We want your Ford Escape or Escape Hybrid ownership experience to be the best it can be. So under this warranty, your new vehicle comes with 3-year/36,000-mile bumper-to-bumper coverage, 5-year/60,000-mile Powertrain Warranty coverage, 5-year/50,000-mile safety restraint coverage, and 5-year/unlimited-mile corrosion (perforation) coverage – all with no deductible. Escape Hybrid is also covered by an 8-year/100,000-mile Hybrid Limited Warranty.⁴ Please ask your Ford Dealer for a copy of these limited warranties.

⁴10-year/150,000-mile Hybrid Battery Limited Warranty in California, Connecticut, Maine, Massachusetts, New Jersey, New York, Rhode Island and Vermont. See dealer for details.

Roadside Assistance. Covers your vehicle for 5 years or 60,000 miles, so you have the security of knowing that help may be only a phone call away should you run out of fuel, lock yourself out of the vehicle, or need towing. Your Ford Dealer can provide complete details on all of these advantages.

Ford Credit. Get the ride you want. Whether you plan to lease or finance, you'll find the choices that are right for you at Ford Credit. Ask your Ford Dealer for details or check us out at fordcredit.com.

Ford Extended Service Plan. For a purchase or lease, the Ford Extended Service Plan (ESP) gives you "Peace-of-Mind" protection designed to cover key vehicle components and protect you from the cost of unexpected repairs. Ask your dealer for a Ford ESP, the only service contract backed exclusively by Ford and honored at all Ford Lincoln Mercury dealerships.

Insurance Services. Get Ford Motor Company quality in your auto insurance. Our program offers industry-leading benefits and competitive rates. Call 1-877-367-3847, or visit us at fordvip.com for a no-obligation quote. Insurance offered by American Road Services Company (in CA, American Road Insurance Agency), a licensed agency and subsidiary of Ford Motor Company.

Comparisons based on 2010 competitive models (Classes are Small SUVs and Small Hybrid SUVs), publicly available information and Ford certification data at time of release. Some features discussed may be optional. Vehicles shown may contain optional equipment. Features shown may be offered only in combination with other options or subject to additional ordering requirements or limitations. Dimensions shown may vary due to optional features and/or production variability. Following release of the PDF, certain changes in standard equipment, options and the like, or product delays may have occurred which would not be included in these pages. Your Ford Dealer is the best source for up-to-date information. Ford Division reserves the right to change product specifications at any time without incurring obligations.

Microsoft is a registered trademark of Microsoft Corporation.

The Bluetooth word mark is a trademark of the Bluetooth SIG, Inc.

Subscriptions governed by SIRIUS Terms and Conditions available at sirius.com. Service available in the 48 contiguous United States and D.C. SIRIUS, XM and all related marks and logos are trademarks of SIRIUS XM Radio Inc. and its subsidiaries.

HD Radio is a proprietary trademark of iBiquity Digital Corp.

¹Under normal driving conditions with routine fluid and filter changes. ²Always wear your safety belt and secure children in the rear seat. ³Fuel economy while operating on E85 will yield different values than gasoline. See fueleconomy.gov for more information.



XLS

Rapid Spec 100A

Includes all standard features, plus:

Mechanical

Duratec® 25-2.5L I-4 engine

5-speed manual transmission

16-in. cast-aluminum wheels with P235/70R16 all-season BSW tires

Seating

Cloth seats

Interior

AM/FM stereo/single-CD player with 4 speakers

Exterior

Black exterior door handles and sideview mirrors

Chrome upper grille, body-color lower grille



XLT

Rapid Spec 200A

Includes select XLS features, plus:

Mechanical

6-speed automatic transmission

Seating

Premium-grade cloth seats

6-way power driver's seat

Interior

Auto-dimming rearview mirror

Compass and outside temperature display

Front and rear color-keyed carpeted floor mats

Illuminated visor vanity mirrors

Leather-wrapped steering wheel with secondary audio controls

Overhead console with dual storage bins

SIRIUS Satellite Radio with introductory

6-month subscription

Exterior

Automatic headlamps

Black roof side rails

Front fog lamps

Privacy glass (rear doors, quarter windows and rear window)

SecuriCode™ keyless entry keypad



LIMITED

Rapid Spec 300A

Includes select XLT features, plus:

Mechanical

16-in. bright-machined aluminum wheels

Seating

Heated front buckets

Leather-trimmed seats

Interior

AM/FM stereo/single-CD player with 6 speakers

Ambient lighting

Chrome finish on interior door handles, air vent bezels and shifter insert

Ebony Black center stack finish

Ford SYNC® voice-activated, in-vehicle connectivity system

Lockable wet trunk

Retractable cargo area cover

Exterior

Body-color exterior door handles and heated sideview mirrors

Chrome upper and lower grilles, liftgate garnish and roof-rail inserts

Roof-rail crossbars



HYBRID

Rapid Spec 500A

Includes select XLT features, plus:

Mechanical

2.5L I-4 Atkinson-cycle engine

Permanent-magnet AC-synchronous electric motor

330-volt nickel-metal-hydride (NiMH) battery pack

16-in. unique cast-aluminum wheels

Electronically controlled continuously variable transmission (eCVT)

Regenerative Braking System

Interior

110-volt AC power outlet

Dual-zone electronic automatic temperature control

Ford SYNC voice-activated, in-vehicle connectivity system

Exterior

Body-color upper and lower grilles



HYBRID LIMITED

Rapid Spec 501A

Includes select Hybrid features, plus:

Mechanical

16-in. bright-machined aluminum wheels

Seating

Heated front buckets

Leather-trimmed seats

Interior

AM/FM stereo/single-CD player with 6 speakers

Ambient lighting

Chrome finish on interior door handles, air vent bezels and shifter insert

Ebony Black center stack finish

Power moonroof

Retractable cargo area cover

Universal garage door opener

Exterior

Body-color exterior door handles and heated sideview mirrors

Chrome upper and lower grilles, liftgate garnish and roof-rail inserts

Rear view camera

Reverse Sensing System

Roof-rail crossbars

XLS & XLT



16-in. Cast-Aluminum Wheels
Standard on XLS and XLT



17-in. Chrome-Clad Aluminum Wheels
Optional on XLT



17-in. Premium Black Wheels with
Machined-Finish Outer Ring
included with Sport Appearance
Package on XLT



Escape XLT in Charcoal Black with Sport Appearance Package and other available equipment



Escape XLT in Ingot Silver Metallic with Sport Appearance Package and other available equipment

2011 **ESCAPE+HYBRID**

ford.com



Drive one.

XLS & XLT OPTIONAL FEATURES

XLS Available Rapid Spec

Rapid Spec 101A – 6-speed automatic transmission

Rapid Spec 102A – 6-speed automatic transmission

+ **Cargo Package** includes roof side rails with crossbars, retractable cargo area cover and lockable wet trunk

XLS Available Options

Ford SYNC® voice-activated, in-vehicle connectivity system (n/a with Rapid Spec 100A)

Front and rear all-weather floor mats

Front and rear color-keyed carpeted floor mats

Intelligent 4WD (n/a with Rapid Spec 100A)

XLS Exterior Colors

Exterior Color	Interior Color
White Suede	●
Sangria Red Metallic	●
Blue Flame Metallic	●
Gold Leaf Metallic	●
Steel Blue Metallic	●
Sterling Gray Metallic	●
Ingot Silver Metallic	●
Tuxedo Black Metallic	●

Interior: ● Graystone Cloth

XLT Available Rapid Spec

Rapid Spec 201A – **Sun & SYNC Package** includes power moonroof and Ford SYNC

Rapid Spec 202A – **Sun & SYNC Package**

+ **Cargo Package**

Rapid Spec 203A – **Sun & SYNC Package**

+ **Cargo Package + Leather Package** includes leather-trimmed seats, heated driver and front-passenger seats, and ambient lighting

XLT Available Options & Packages

17-in. chrome-clad aluminum wheels with P225/65R17 all-season BSW tires (n/a with Sport Appearance Package)

Cargo Package

Duratec® 30–3.0L V6 Flex Fuel engine

Ford SYNC in-vehicle connectivity system

Front and rear all-weather floor mats

Integrated side step bars (n/a with Sport Appearance Package)

Intelligent 4WD

Leather Package¹

Premium Sound System with single-CD player, clock and 7 speakers (including an 8-in. subwoofer) with 320 watts

Sport Appearance Package includes high-gloss Black grille, lower front appliqué, heated sideview mirrors and liftgate spoiler; Blacked-out headlamp treatment; 17-in. premium Black wheels with machined-finish outer ring and P225/65R17 all-season BSW tires; body-color door handles and rocker moldings; Charcoal Black cloth seating (Charcoal Black Leather when ordered with Leather Package); Ebony Black interior accents; chrome finish on interior door handles, air register bezels and shifter knob insert²

Trailer Tow Prep Package includes Class II 3,500-lb. receiver and trailer wiring harness with 4-pin connector (V6 only)

XLT Exterior Colors

Exterior Color	Interior Colors
White Suede	● ● ● ●
Sangria Red Metallic	● ● ● ● ●
Blue Flame Metallic	● ● ● ● ●
Gold Leaf Metallic	● ● ● ● ●
Steel Blue Metallic	● ● ● ● ●
Sterling Gray Metallic	● ● ● ● ●
Ingot Silver Metallic	● ● ● ● ●
Tuxedo Black Metallic	● ● ● ● ●

Interiors: ● Premium Stone Cloth ● Premium Camel Cloth

● Charcoal Black Cloth ● Stone Leather

● Camel Leather ● Charcoal Black Leather

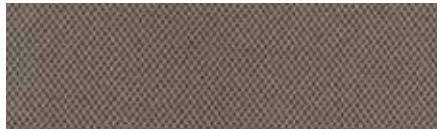
INTERIOR



Graystone Cloth
Standard on XLS



Premium Stone Cloth
Standard on XLT



Premium Camel Cloth
Standard on XLT



Charcoal Black Cloth
Standard on XLT



Stone Leather
Optional on XLT (requires Leather Package)

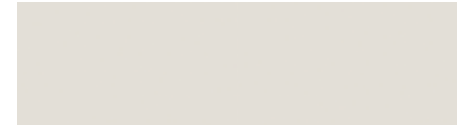


Camel Leather
Optional on XLT (requires Leather Package)



Charcoal Black Leather
Optional on XLT (requires Leather Package)

EXTERIOR



White Suede



Sangria Red Metallic



Blue Flame Metallic



Gold Leaf Metallic



Steel Blue Metallic



Sterling Gray Metallic



Ingot Silver Metallic



Tuxedo Black Metallic

Colors are representative only.
See your dealer for actual paint/trim options.

¹Requires Sport Appearance Package. ²Available with Steel Blue Metallic, Ingot Silver Metallic, Sterling Gray Metallic or Tuxedo Black Metallic exterior colors. Includes roof side rails only when ordered with Cargo Package or Sun & SYNC Package. Not available with 17-in. chrome-clad wheels or integrated side step bars.

LIMITED



Charcoal Black with available equipment



Tuxedo Black Metallic with available equipment

2011 ESCAPE+HYBRID

ford.com



Drive one.

LIMITED OPTIONAL FEATURES

Available Rapid Spec

Rapid Spec 301A – **Moon & Tune Package** includes power moonroof and Premium Sound System with single-CD player, clock and 7 speakers (including an 8-in. subwoofer) with 320 watts

Rapid Spec 302A – **Limited Luxury Package** includes dual-zone electronic automatic temperature control, Reverse Sensing System, rear view camera and universal garage door opener + **Moon & Tune Package**

Available Options & Packages

17-in. chrome-clad aluminum wheels with P225/65R17 all-season BSW tires

Active park assist (available only with Rapid Spec 302A)

Duratec® 30–3.0L V6 Flex Fuel engine

Front and rear all-weather floor mats

Integrated side step bars

Intelligent 4WD

Trailer Tow Prep Package includes Class II 3,500-lb. receiver and trailer wiring harness with 4-pin connector (V6 only)

Voice-activated Navigation System with nearly 10-gigabyte hard drive, single-disc Premium Sound System, HD Radio™ technology and SIRIUS Traffic and SIRIUS Travel Link services with introductory 6-month subscription (n/a with Rapid Spec 300A)

Exterior Colors

Exterior Colors	Interior Colors	
White Suede	■	■
Sangria Red Metallic	■	■
Gold Leaf Metallic	■	■
Steel Blue Metallic	■	■
Sterling Gray Metallic	■	■
Ingot Silver Metallic	■	■
Tuxedo Black Metallic	■	■

Interiors: ■ Camel Leather ■ Charcoal Black Leather

INTERIOR

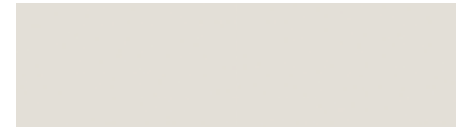


Camel Leather
Standard



Charcoal Black Leather
Standard

EXTERIOR



White Suede



Sangria Red Metallic



Gold Leaf Metallic



Steel Blue Metallic



Sterling Gray Metallic



Ingot Silver Metallic



Tuxedo Black Metallic



16-in. Bright-Machined Aluminum Wheels
Standard



17-in. Chrome-Clad Aluminum Wheels
Optional

Colors are representative only.
See your dealer for actual paint/trim options.

2011 ESCAPE+HYBRID

ford.com



Drive one.

HYBRID & HYBRID LIMITED



Escape Hybrid Limited in Stone with available equipment



Escape Hybrid Limited in Steel Blue Metallic

2011 ESCAPE+HYBRID

ford.com



Drive one.

HYBRID & HYBRID LIMITED

OPTIONAL FEATURES

Hybrid Available Options & Packages

Black roof-rail crossbars
 Integrated side step bars
 Intelligent 4WD
 Power moonroof with sunshade and mini-overhead console
 Voice-activated Navigation System with nearly 10-gigabyte hard drive, single-disc Premium Sound System, HD Radio™ technology, Hybrid Energy Flow and Power & Efficiency monitors, and SIRIUS Traffic and SIRIUS Travel Link services with introductory 6-month subscription

Hybrid Exterior Colors

Hybrid Exterior Colors	Interior Color
White Suede	●
Lime Squeeze Metallic	●
Steel Blue Metallic	●
Ingot Silver Metallic	●
Tuxedo Black Metallic	●

Interior: ● Premium Stone Cloth

Hybrid Limited

Available Options & Packages

Active park assist
 Integrated side step bars
 Intelligent 4WD
 Voice-activated Navigation System with nearly 10-gigabyte hard drive, single-disc Premium Sound System, HD Radio technology, Hybrid Energy Flow and Power & Efficiency monitors, and SIRIUS Traffic and SIRIUS Travel Link services with introductory 6-month subscription

Hybrid Limited Exterior Colors

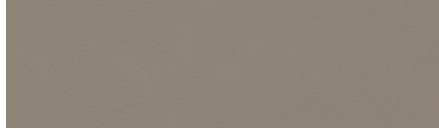
Hybrid Limited Exterior Colors	Interior Color
White Suede	■
Lime Squeeze Metallic	■
Steel Blue Metallic	■
Ingot Silver Metallic	■
Tuxedo Black Metallic	■

Interior: ■ Stone Leather

INTERIOR

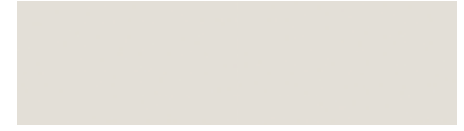


Premium Stone Cloth
Standard on Hybrid



Stone Leather
Standard on Hybrid Limited

EXTERIOR



White Suede



Lime Squeeze Metallic



Steel Blue Metallic



Ingot Silver Metallic



Tuxedo Black Metallic



16-in. Unique Cast-Aluminum Wheels
Standard on Hybrid



16-in. Bright-Machined Aluminum Wheels
Standard on Hybrid Limited

Colors are representative only.
See your dealer for actual paint/trim options.

Escape your way.

- A. Brighten your drive with the available **power moonroof**. There's an optional **Sun & SYNC Package** on XLT that mixes it with the Ford SYNC® voice-activated, in-vehicle connectivity system. The optional **Moon & Tune Package** on Limited pairs it with a 320-watt, 7-speaker Premium Sound System that includes a single-CD player.
- B. See what's behind the vehicle when you're in Reverse with the available **rear view camera**. It displays the full-color image from its liftgate-mounted camera onto your rearview mirror or the available Navigation System's large LCD screen (shown).
- C. Conquer inclement weather with the available **heated sideview mirrors**. Just the touch of a button puts them on their way to clear while you stay comfortably indoors.
- D. Carry as much as 100 lbs. of cargo up top when you add **roof side rails with crossbars**. The optional **Cargo Package** on XLS and XLT offers them together with a retractable cargo area cover and a lockable wet trunk.
- E. Set the available **ambient lighting** to match your mood with 7 glowing options from red hot to cool blue.
- Listen to your favorite AM and FM channels in crystal-clear digital sound, courtesy of new **HD Radio™** technology included with the available Navigation System. It also gives you new local FM channels, on-screen information and much more – all 100% subscription-free.



2011 **ESCAPE+HYBRID**

ford.com



Drive one.

Ford Custom Accessories

Also available:

APPEARANCE

Ford Custom Graphics by Original Wraps,TM Inc.¹

ELECTRONICS

Portable Navigation Systems by Garmin^{®1}

Vehicle Security System

HitchScanTM Rear Park Assist Sensor
and Hitch Step by EchoMaster^{®1}

Forward or Reverse Parking Assist System
by EchoMaster¹

GPS Tracking and Recovery by SmartAlert^{TM1}

Keyless Entry Keypad

Wiper De-Icer and Debris Cleaner
by Wiper Shaker¹

EXTERIOR

Roof Cross Bars

Hard Cargo Organizer

Molded Running Boards

Moonroof Deflector

Hood Deflector

Side Window Deflectors

Splash Guards

Locking Fuel Plug

Sportz[®] SUV Tents by Napier¹

Trailer Hitch Balls/Drawbars²

Trailer Hitch Assembly²

Trailer Wiring Harness Kit²

INTERIOR

Auto-Dimming Rearview Mirror

Cargo Area Protector

Interior Light Kit

Cargo Net

Cargo-Logic[®] System

Ash Cup/Coin Holder With or Without
Lighter Element

WHEELS

Wheel Locks

custom
accessories 

To learn more about Ford Custom Accessories
and to shop online, visit fordaccessories.com.



Genuine Ford Accessories will be warranted for whichever provides you the greatest benefit: 12 months or 12,000 miles (whichever occurs first), or the remainder of your Bumper-to-Bumper 3-year/36,000-mile New Vehicle

Limited Warranty. Contact your local Ford Dealer for details and a copy of the limited warranty. Ford Licensed Accessories (FLA) are warranted by the accessory manufacturer's warranty. Ford Licensed Accessories are fully designed and developed by the accessory manufacturer and have not been designed or tested to Ford Motor Company engineering requirements. Contact your Ford Dealer for details regarding the manufacturer's limited warranty and/or a copy of the FLA product limited warranty offered by the accessory manufacturer.

¹Ford Licensed Accessories. ²Not for use with Hybrid. THULE is a registered trademark of Thule Sweden AB. INVISION is a trademark of Audiovox Corporation. Garmin is a registered trademark of Garmin Ltd. SmartAlert is a registered trademark of Inilex, Inc. Cargo-Logic is a registered trademark of Lund, Inc.



Racks and Carriers by THULE^{®1}



Dual Headrest DVD by INVISION^{TM1}



Remote Start Systems



Paintable Rear Roof Spoiler



Soft Cargo Organizers (Large and Standard Sizes)
and Soft Cargo Cooler Bag



Cargo Security Shade



All-Weather Floor Mats

2011 **ESCAPE+HYBRID**

ford.com



Drive one.