



escort
ninety nine







Sarah and Tina hit the road early in Sarah's ZX2 for the beach and some intense rollerblading. Rounding out the party was Tina's dog, Chumley, who loved nothing better than **a good run down**

the boardwalk. So Sarah and Tina attached a leash to his collar and let him fly.

Eventually, they had to rest their tired arms, so they pulled Chumley over at an outdoor cafe and ordered

lunch. Two chicken salads and a double burger with extra cheese, no onions and no pickles, cooked very rare.



ZX2 Hot Series in Bright Red Clearcoat with optional chrome wheels and Sport Group.

Escort ZX2



ZX2 Hot Series shown in Denim Blue Clearcoat Metallic.

ZX2 is the car that offers exceptional value with its many features.

Delivering 130 horsepower, the 16-valve Zetec engine makes ZX2

one **fun-to-drive** automobile. The ZX2 driving philosophy

is to approach life from outside the box. It takes a **confident,**

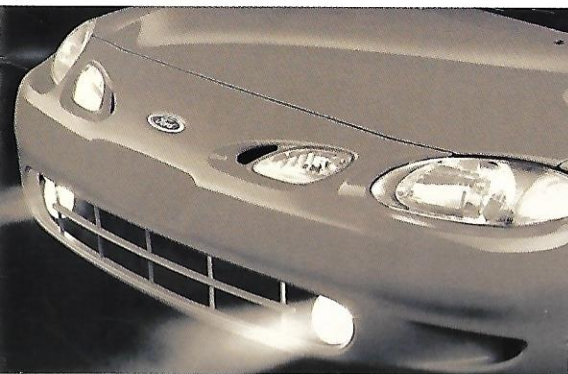
charismatic stand against all of life's routines, rigors and ruts.

ZX2 "Hot" can be equipped with a **Premium** Sound system,

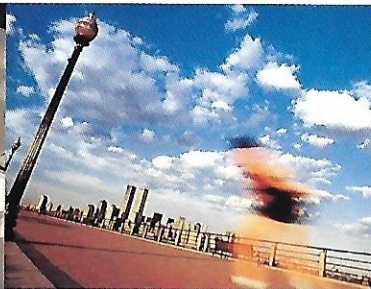
15" aluminum wheels, plus Sport Group rear spoiler and fog

lamps. Day in, night out, you'll be asking yourself: Am I allowed

to have this much fun in a car?



The recessed fog lamps included in optional Sport Group help you cut through the dark, while shedding a whole new light on the road.



The available power sliding moonroof lightens up any drive with sunlight or twinkling stars.



Optional 15" aluminum sport wheel provides an add



Escort Sedans

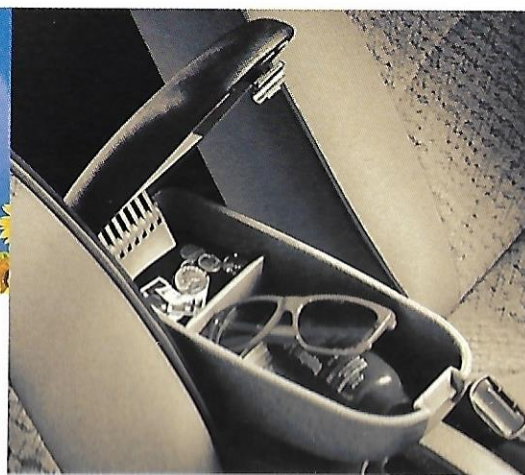


Escort LX shown in Tropic Green Clearcoat Metallic.

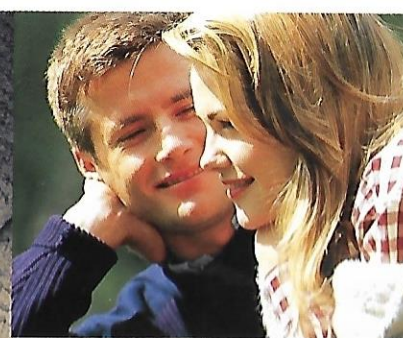
For features, **style** and fun, Escort Sedan is definitely more than you might expect in a car its size. Its **cool** contemporary styling will have you driving more, just because you'll want to be seen in it. Escort SE offers **power** windows, locks and mirrors. You can also choose the optional Sport Group to further sharpen your image. Special sport wheels, seats and a tastefully styled rear spoiler **spice** up its appearance. Escort manages to combine driving enjoyment with practicality and function.



A tastefully styled rear spoiler provides an optional sporty edge.



An auxiliary console, available as a Ford Dealer installed accessory, features a padded armrest and extra storage space for all kinds of articles.



Escort SE has standard dual outside power mirrors.



Escort Wagons



Escort SE Wagon in Black Clearcoat.

Escort Wagon provides owners more **utility** than sedans can,

offering more interior room to tote things and move cargo.

Escort is a perfect example of the **contemporary** wagon.

Besides sharing the performance, convenience and **comfort**

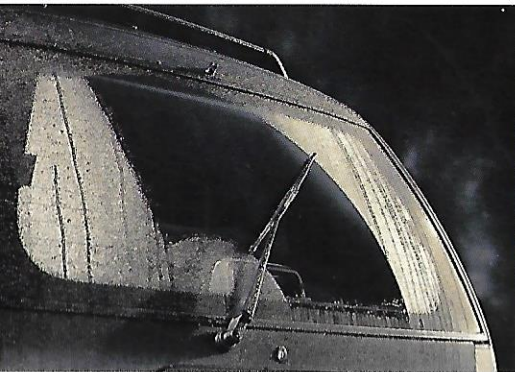
of the sedan, it offers a full 63.4 cubic feet of cargo area with the

rear seat backs folded down. Plus it's **versatile**: The standard

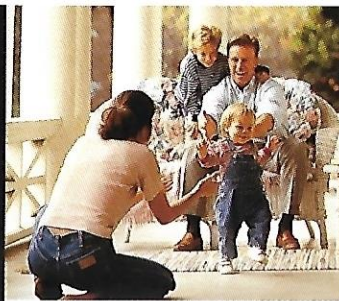
60/40 split/fold feature of the rear seat lets you fold both seat

backs down to carry cargo; or just one when you have both

passengers and cargo to deal with.



Rear window wiper/washer comes standard on the Escort Wagon for added convenience.



Escort SE Wagon offers a full 63.4 cubic feet of rear cargo room.



Cargo area cover allows you to conceal valuable items for your convenience.

Every time 5' 1" Jill drives the Escort, she pulls the driver's seat up and leaves it. This drives Steve, her 6'2" husband, crazy. With all the use their Escort gets, no one knows **who'll drive**

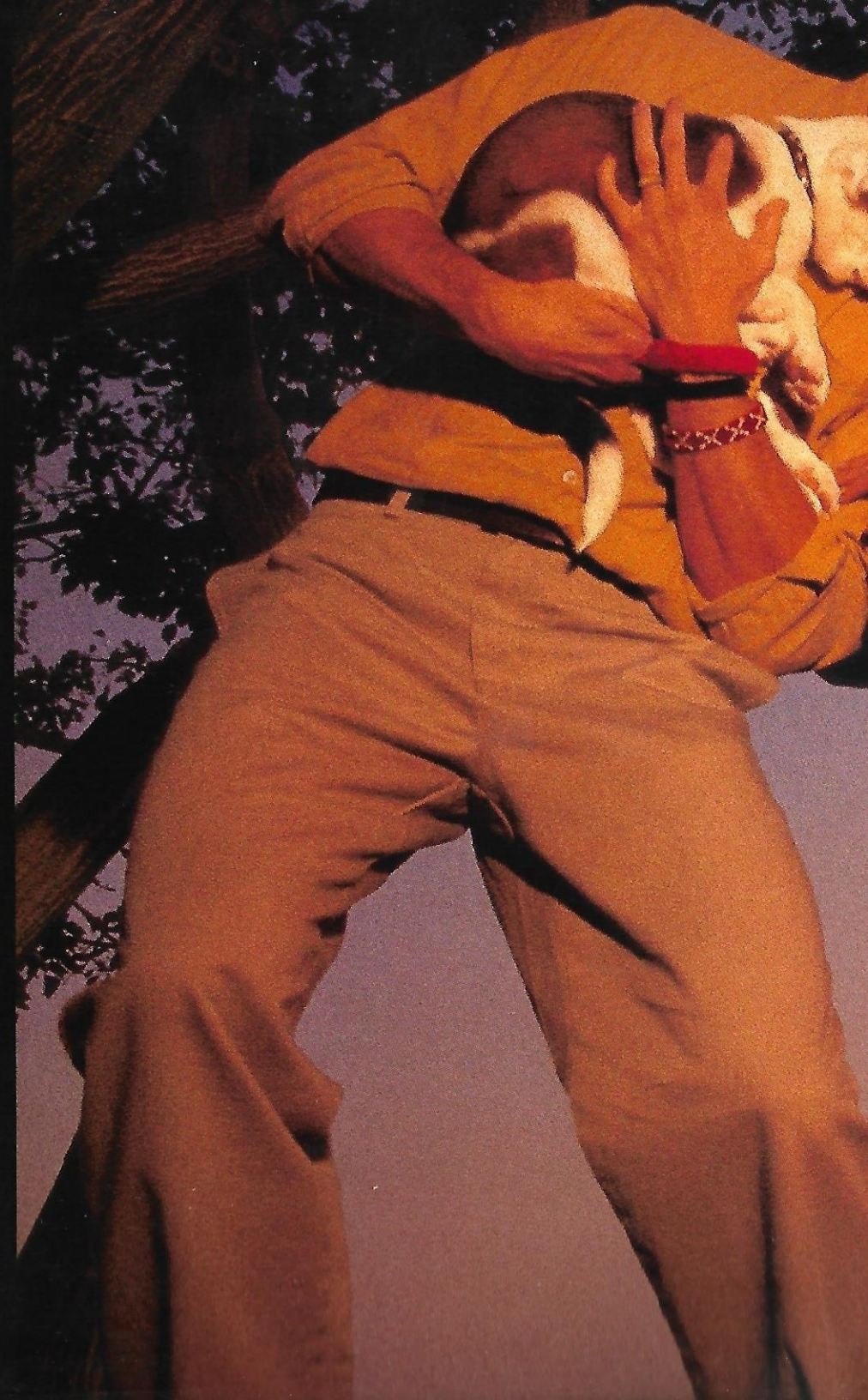
it next. After putting the seat back for

the umpteenth time, Steve taped a note to the steering wheel, "Honey, if you can remember to put

the front seat back, then I promise to remember

to put the toilet seat down." Jill knew it was an

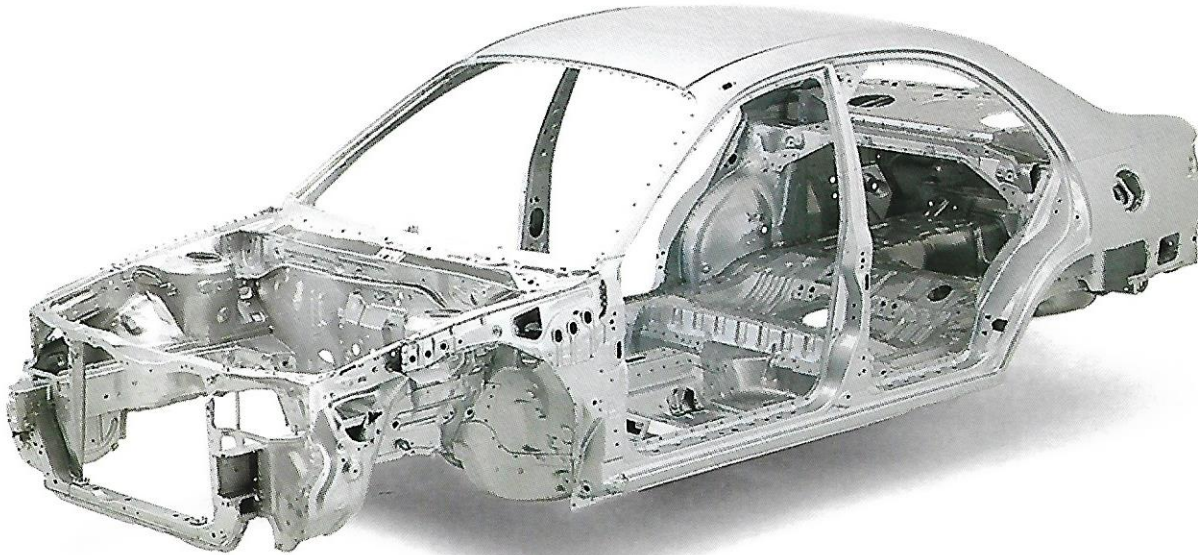
offer she couldn't refuse.







safety

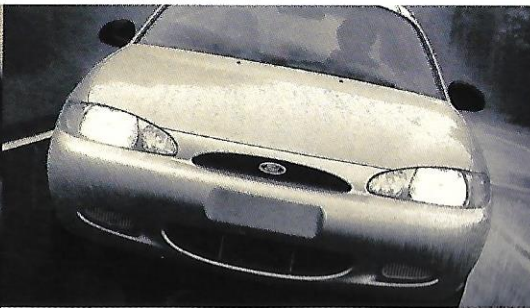


Safety cell construction provides occupant protection in a frontal, side or rear impact.

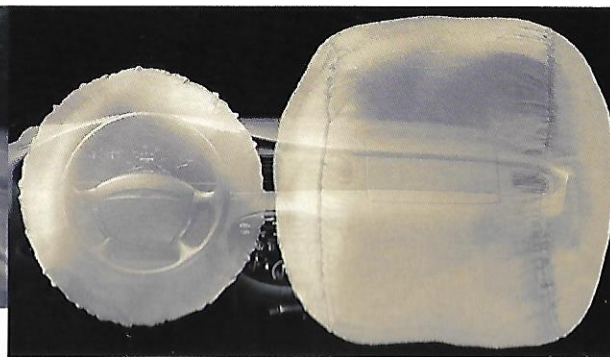
Escort comes standard with Second Generation Depowered airbags for driver and passenger protection. **Safety cell construction** and protective side door intrusion beams provide extra structural integrity. Available **anti-lock brakes** provide greater steering control while braking under most adverse conditions, even on wet or slippery surfaces. Escort offers available keyless all-door **remote entry**, along with a perimeter anti-theft device, for extra convenience and security.



Childproof door locks can be engaged to prevent children from opening car doors from the interior.



Available anti-lock brakes provide greater steering control while braking under most adverse conditions, even on wet or slippery surfaces.



Dual Second Generation Depowered airbags are standard protection. Always wear your safety belt and secure children in the rear seat. Standard dual Second Generation airbags are depowered to further enhance protection for the driver and passenger.



All-door Remote Keyless Entry system available.

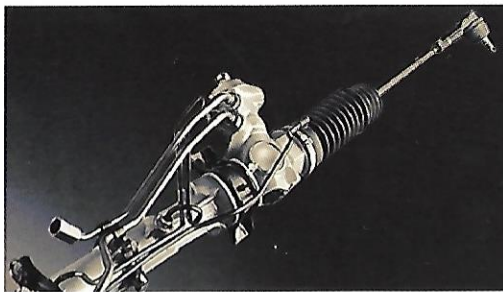
performance



Rigid one-piece bodyside for smoother ride.

Escort's power rack-and-pinion steering creates ease of **maneuverability**, while the independent rear quadralink suspension system provides excellent **road-hugging control** during acceleration, cornering and braking.

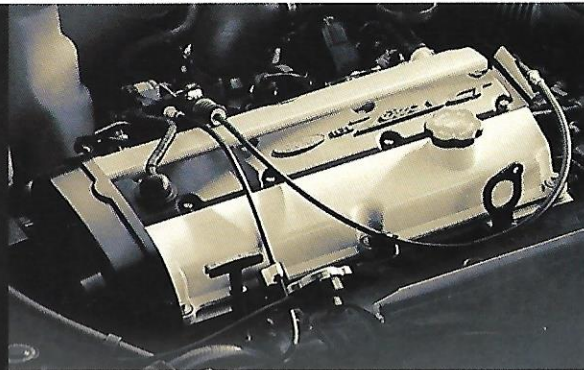
ZX2 generates 130 hp with its 16-valve Zetec engine, with quick-opening throttle. Escort Sedan and Wagon come with a 2.0L engine, and split-port induction system, which maximizes **fuel economy** below the 3,000-rpm mark.* And all three models offer the convenience of 100,000 miles between tune-ups.**



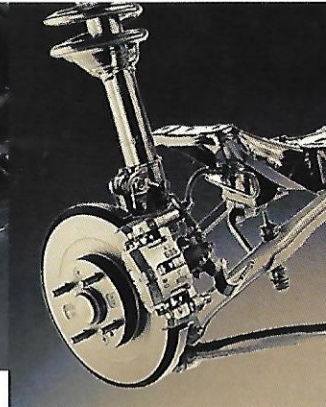
Power rack-and-pinion steering improves steering response.



Sedan/Wagon 110-hp, 2.0L engine maximizes fuel economy.



ZX2 16-valve 130-hp Zetec engine adds driving power.



The quadralink suspension system is designed for a smooth yet agile ride.

safety & performance

Today, automotive design must satisfy many more demands than it did even just a few years ago. Styling is important, of course, but considerations like safety and durability continue to grow in importance as customers weigh their purchase decisions ever more carefully. Like all Ford vehicles, Escort has been designed to protect its occupants and to provide years of dependable service to its owners.





Interior

Escort is designed to provide the utmost in **refined comfort** and convenience. The Escort Sedan, ZX2 and Wagon all provide more than enough room to carry passengers comfortably. Features such as the standard split/fold rear seat **offer versatility** in transporting large cargo, while convenience features include available power locks and windows. Escort has a number of **option groups** to choose from, allowing you to personalize your car to fit your active lifestyle. The Escort is a smart choice for any lifestyle, combining practicality and function with **sleek styling**.



The standard 60/40 split/fold rear seat provides exceptional passenger/cargo versatility.



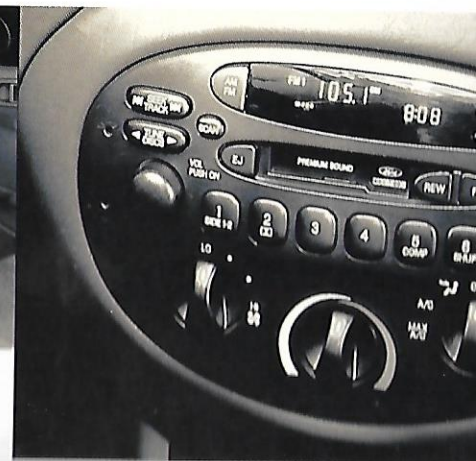
Power locks and windows included in the optional Power Group give you touch-of-a-button convenience.



Rear trunk lid release button, conveniently located on driver's side door panel, allows you to open your trunk with the push of a button.



Tilt steering wheel is adjustable for optimum driver comfort. Included in optional Comfort Group.



The optional Premium Sound system with trunk-mounted 6-CD changer lets you enjoy your favorite music in high-end audio sound.





Working a full-time job isn't easy when you're

also a **full-time wife and mom.** Getting Davey up and off to school

would be fine if April didn't have to get herself up and off to work, too. Fortunately, with so much on her mind,

her Escort is the least of her worries. And she was

actually ahead of schedule when she pulled up to

the school and discovered no one there. She thought

she might be late until Davey finally spoke up,

"Mom, do I really have to go to school on Saturday?"

Paint Colors

Oxford White
Clearcoat

Silver Frost
Clearcoat Metallic

Mocha Frost
Clearcoat Metallic



Ash Gold
Clearcoat Metallic



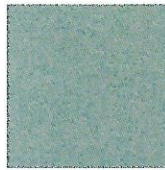
Bright Red Clearcoat



Autumn Orange
Clearcoat Metallic



Toreador Red
Clearcoat Metallic



Aquamarine Frost
Clearcoat Metallic



Tropic Green
Clearcoat Metallic



Graphite Blue
Clearcoat Metallic



Atlantic Blue
Clearcoat Metallic



Denim Blue
Clearcoat Metallic



Black Clearcoat

EXTERIOR PAINT

INTERIOR TRIM

ZX2

	Medium Graphite	Dark Charcoal*	Medium Prairie Tan
Oxford White Clearcoat	•	•	•
Silver Frost Clearcoat Metallic	•	•	
Ash Gold Clearcoat Metallic		•	•
Bright Red Clearcoat	•	•	•
Autumn Orange Clearcoat Metallic*		•	•
Toreador Red Clearcoat Metallic	•	•	•
Tropic Green Clearcoat Metallic	•	•	•
Graphite Blue Clearcoat Metallic	•	•	
Denim Blue Clearcoat Metallic	•	•	•
Black Clearcoat	•	•	•

*Unique to Sport Group.

Escort Sedan and Wagon

	Medium Graphite	Slate Blue	Medium Prairie Tan
Oxford White Clearcoat	•	•	•
Silver Frost Clearcoat Metallic	•	•	
Mocha Frost Clearcoat Metallic			•
Bright Red Clearcoat	•		•
Toreador Red Clearcoat Metallic	•		•
Aquamarine Frost Clearcoat Metallic	•		•
Tropic Green Clearcoat Metallic	•		•
Graphite Blue Clearcoat Metallic	•	•	
Atlantic Blue Clearcoat Metallic	•	•	
Black Clearcoat	•		•

Optional Equipment Group

SE Comfort Group

(Sedan & Wagon)

- Speed control
- Tilt steering wheel
- Dual map lights

SE Sport Group (Sedan)

- Rear spoiler
- Tachometer
- Bright exhaust tip
- Special sport seats with rear head restraints
- 14" aluminum wheels
- Unique sport badging
- Leather-wrapped steering wheel

SE Power Group

(Sedan & Wagon)

- Power windows
- Power locks

Hot Comfort Group

- Speed control
- Tilt steering wheel
- Dual map lights

Hot Sport Group (zx)

- Rear spoiler
- Fog lamps
- Bright exhaust tip
- Special sport seats with rear head restraints
- 15" aluminum wheels
- Unique sport badging
- Leather-wrapped steering wheel

Hot Power Group (zx)

- Power windows
- Power locks

Escort Wheels



- A** Full luxury wheel cover with "bolt-on" appearance (standard)
- B** Optional 14" spoke swirl aluminum wheel (included with Sport Group)

ZX2 Wheels



- A** Full sport wheel cover with "bolt-on" appearance (standard)
- B** Optional 15" aluminum sport wheel (only available with Sport Group)
- C** Optional 14" aluminum 5-spoke wheel (available on Hot Series)

Exterior Features	Escort LX	Escort SE	Wagon SE	ZX2 Cool	ZX2 HOT
Aerodynamic fixed-aim headlamps	S	S	S	S	S
Color-keyed bumpers	S	S	S	S	S
Black bodyside protection moldings	S	-	-	-	-
Color-keyed bodyside protection moldings	-	S	S	S	S
Dual outside manual mirrors	S	-	-	S	-
Dual outside power mirrors	-	S	S	-	S
Lower bodyside and underbody PVC coating	S	S	S	S	S
Rear reflex applique	S	S	-	S	S
Bright exhaust tip	-	G	-	-	G
Rear spoiler	-	G	-	O	G
Fog lamps	-	-	-	-	G
Sport badging	-	G	-	-	G
14" bolt-on appearance wheel covers	S	S	S	S	S
14" aluminum 5-spoke wheels	-	O	-	-	O
15" aluminum wheels	-	-	-	-	G

Comfort/Convenience Features

Power steering	S	S	S	S	S
CFC-free air conditioning system	O	S	S	O	S
Integrated control panel for climate and sound system	S	S	S	S	S
Tachometer	-	G	-	S	S
Power sliding moonroof	-	-	-	-	O
Soft-feel vinyl door trim armrest, front integral map pocket and speaker grille	S	S	S	S	S
Center console with cassette storage, forward cupholders, rear bin/cupholder	S	S	S	S	S
Glove box	S	S	S	S	S
Digital clock	S	S	S	S	S
Headlamps-on warning chime	S	S	S	S	S
Full 12-ounce carpeting	S	S	S	S	S
Low-liftover trunk/cargo area	S	S	S	S	S
Full trunk trim	S	S	-	S	S
Luxury cargo area trim	-	-	S	-	-
Solar tinted glass	S	S	S	S	S
Side window demisters	S	S	S	S	S
Flow-through 4-speed heater/defroster with rear ducts	S	S	S	S	S
2-speed wipers with variable interval	S	S	S	S	S
Temperature gauge	S	S	S	S	S
Trip odometer	S	S	S	S	S
Low-fuel warning light	S	S	S	S	S
Battery saver	S	S	S	S	S
Inside hood release	S	S	S	S	S
Smoker's Package	O	O	O	O	O
All-door remote entry with anti-theft system and power door locks	-	S	S	-	S
Internal trunk release	S	S	-	S	S
Front and rear floor mats	O	O	O	O	O
Automatic transaxle	O	O	O	O	O
Leather-wrapped steering wheel	-	G	-	-	G

Comfort/Convenience Cont.

	Escort LX	Escort SE	Wagon SE	ZX2 Cool	ZX2 HOT
Luggage rack	-	-	S	-	-
Cargo area cover	-	-	S	-	-
Rear window wiper/washer	-	-	S	-	-
Dual map lights	-	G	G	-	G
Dual visor mirrors	S	S	S	S	S
Power windows	-	G	G	-	G
Power locks	-	G	G	-	G
Speed control	-	G	G	-	G
Tilt steering wheel	-	G	G	-	G

Safety Features

Second Generation Depowered dual front airbags, driver and passenger; manual 3-point front lap/shoulder belt system with height-adjustable D-ring, lap/shoulder outboard rear safety belts, center rear seat lap belt (not on ZX2)

	Escort LX	Escort SE	Wagon SE	ZX2 Cool	ZX2 HOT
Anti-lock braking system (ABS)	O	O	O	O	O
Child safety rear door locks	S	S	S	-	-
Rear window defroster	O	S	S	S	S

Seating

Low-back cloth bucket seats with split/fold (60/40) rear seat	S	S	S	S	S
Low-back leather-trimmed bucket seats with split/fold (60/40) rear seat	-	-	-	-	O
Driver's seat memory recline	-	-	-	S	S
Unique sport seats w/integrated rear head restraints	-	G	-	-	G

Option Groups

SE Comfort Group	-	O	O	-	-
SE Sport Group	-	O	-	-	-
SE Power Group	-	O	O	-	-
Hot Comfort Group	-	-	-	-	O
Hot Sport Group	-	-	-	-	O
Hot Power Group	-	-	-	-	O

Audio Systems

Four premium speakers (two standard and two premium with wagon)	S	S	S	S	S
AM/FM stereo	S	S	S	S	S
AM/FM stereo/cassette	O	S	S	O	S
AM/FM stereo/cassette/Premium Sound system with CD changer controls	-	-	-	-	O
AM/FM stereo/cassette/Premium Sound system with 6-disc CD changer	-	O	-	-	O
6-disc CD changer (dealer installed)	O	O	O	O	O

S = Standard O = Optional G = Option Group Only -- = Not Available

Dimensions

	SEDAN	Wagon	ZX2
Wheelbase	98.4"	98.4"	98.4"
Length	174.7"	172.7"	175.2"
Height	53.3"	53.0"	52.3"
Width	67.0"	67.0"	67.4"
Front tread	56.5"	56.5"	56.5"
Rear tread	56.5"	56.5"	56.5"

Dimensions Cont.

	SEDAN	Wagon
Front head room	39.1"	38.7"
Rear head room	36.8"	39.1"
Front leg room	42.5"	42.5"
Rear leg room	34.0"	34.0"
Front shoulder room	51.6"	51.6"
Rear shoulder room	52.1"	52.1"
Trunk or cargo volume (cu. ft.)	12.8	63.4*
Passenger capacity	5	5

*With rear seat back(s) folded down.

Chassis

Body type	
Suspension, front	Independent system with gas-pressurized MacPherson struts, stabilizer bar; isolated engine
Suspension, rear	Independent quadralink system;
Steering	Power rack-and-pinion; 17.0:1 ratio
Brakes	4-wheel hydraulic, power front disc, rear drum (anti-lock system on ZX2)
Tires	P185
Fuel capacity	

Engine - Sedan and Wagon

Type	2.0L overhead-cam in-line 4-cyl. with on-board diagnostics
Valves	
Horsepower (SAE net)	110 @ 5000 rpm
Torque (SAE net lb.-ft.)	125 @ 2500 rpm
Engine control	Electronic Fuel Injection (EFI)
Induction system	Split-port sequential electronic fuel injection
Spark plugs	Platinum
Scheduled tune-up interval	100,000 miles

*Under normal driving conditions with routine fluid and filter changes.

Engine - ZX2

Type	2.0L Zetec dual-overhead-cam, in-line 4-cyl. with on-board diagnostics
Valve system	16 valves with variable camshaft timing
Horsepower (SAE net)	130 @ 5000 rpm
Torque (SAE net lb.-ft.)	127 @ 2500 rpm
Engine control	Electronic Fuel Injection (EFI)
Induction system	Sequential electronic fuel injection with fast-open throttle
Spark plugs	Platinum
Scheduled tune-up interval	100,000 miles

*Under normal driving conditions with routine fluid and filter changes.

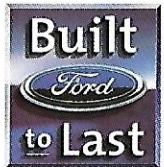
Transaxle

Type	5-speed manual or 4-speed automatic overdrive
------	---

Product Changes and Options Availability: Following publication of the catalog, certain changes in standard equipment, options, price and the like, or product delays, may have occurred which would not be included in this catalog. Your Ford Dealer is your best source for up-to-date information. Ford Division reserves the right to change specifications at any time without incurring obligations. Options shown or described are available at extra cost and may be offered only in combination with other options or subject to additional ordering requirements or restrictions.

Roadside Assistance: Every new Ford includes the assurance of a 24-hour emergency Roadside Assistance program provided during the 3-year/36,000-mile bumper-to-bumper warranty. Ask your Ford Dealer for a copy of the program and complete details on this program, which includes such services as fuel delivery, tire change, and even help when you're locked out of your vehicle.





Visit the Ford website at www.ford.com