

F O R D 1 9 9 2

Explorer



AN ADVENTURE
IN DRIVING
AWAITS YOU
IN AMERICA'S
BEST-SELLING
COMPACT UTILITY.

Drivers of compact utilities rely on their versatile vehicles to satisfy the needs of their varied, active lifestyles.

Across America, more of these drivers chose Ford Explorer last year than any other compact utility. And for a good reason: Explorer has the attributes they look for most. Style. Performance. Spaciousness. Versatility.

Explorer is contemporary in style, aerodynamic in function. And powered by a multi-port electronically

fuel-injected 4.0L V-6 engine, Explorer moves you with authoritative performance.

The handling is responsive. The power brakes feature a computer-controlled rear anti-lock system. And this year, the performance and on-center feel of the steering system are improved.

The Explorer 4x4 features our exclusive Touch Drive transfer case, with convenience unmatched by any other automatic 4x4 system. Its availability is one reason

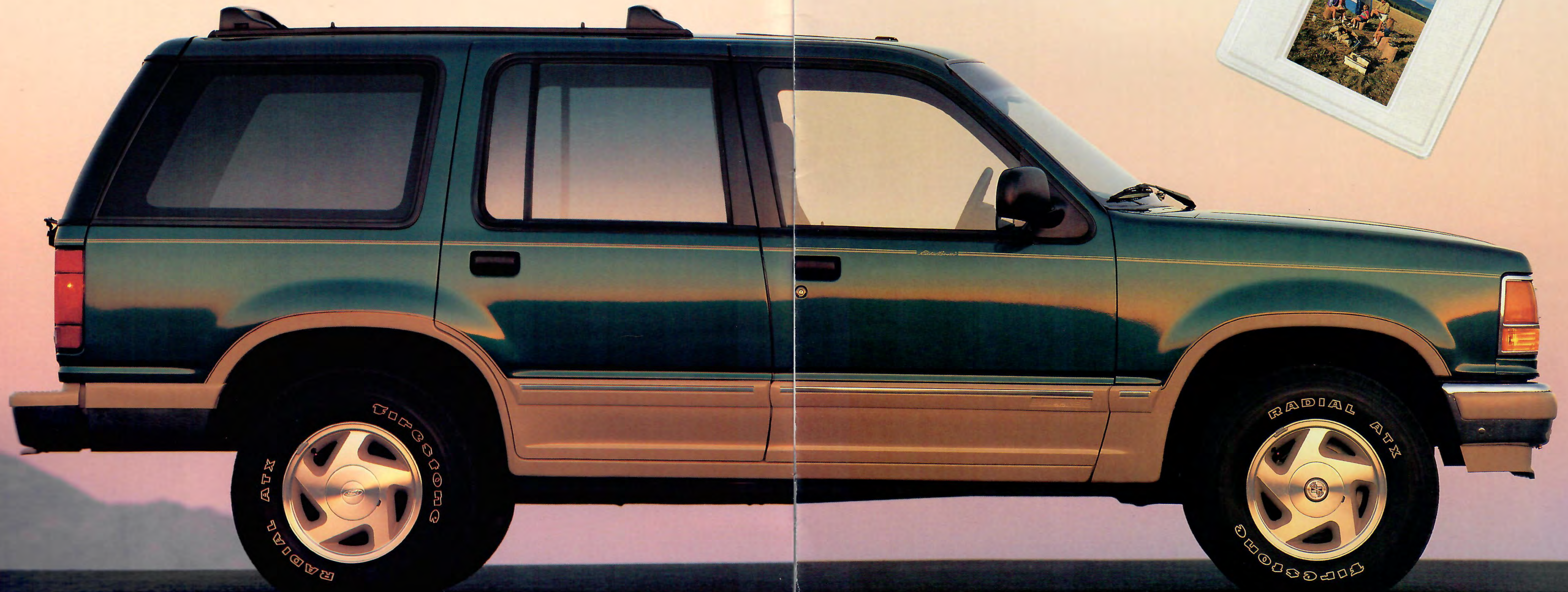
why *Four Wheeler* magazine named Ford Explorer "Four Wheeler of the Year" in 1990 and again in 1991.

If you don't need the extra traction of the 4x4, Explorer comes in a 4x2 model.

What's more, Explorer is best in class in overall spaciousness, providing more room for passenger comfort and cargo-carrying utility.

Discover for yourself why Explorer has been America's No. 1 compact utility, in a test drive at your Ford Dealer.

The top-of-the-line Explorer Eddie Bauer model is outfitted with a unique two-tone paint treatment, shown here in Cayman Green Clearcoat Metallic/Mocha, one of seven available combinations. Standard also on the outside are a roof luggage rack, Privacy™ glass, P235 outline white-letter all-terrain tires on luxury aluminum wheels with Mocha-color accent, and the rear window wiper/washer/defroster. Some equipment shown is optional.



MORE OVERALL
SPACE FOR PEOPLE
AND CARGO
THAN YOU'D FIND
IN ANY OTHER
COMPACT UTILITY.

As a "customer-driven" company, we take comfort very seriously in the design of every Ford product.

So you can see why the spaciousness of the 4-Door is one of our finest Explorer design achievements.

Compare Explorer with any other compact utility and you will discover more overall space for passengers and cargo. You'll also discover the availability of six-passenger seating (in XL and XLT models) that few other compact utilities offer.

Whether you're seated up front or in the rear, you enjoy the comfort of Explorer's best-in-class spaciousness. By design, the long 112-inch wheelbase contributes to the 4-Door's superior measure of rear seat leg room.

Explorer is not only spacious, it's also easy to get into and out of, thanks to a low step-in height.

Once inside, you'll find an impressive list of standard comfort and convenience features. Reclining front seat backs. The clarity of gauges, including a tachometer to read the rpm of Explorer's potent 4.0L multi-port EFI V-6. Steering column lever-mounted controls. Interval

windshield wipers. Rear seat heater ducts. An electronic AM/FM stereo sound system. Child-proof rear door locks. And many more.

The 60/40 rear bench seat is as versatile as it is comfortable. It lets you lower one or both seat backs to suit passenger- and cargo-carrying needs.

Lower both seat backs to enjoy the full advantage of the Explorer 4-Door's 81.6 cu. ft. of cargo space (with 6-ft.-long flat cargo load floor). No other leading compact utility can match it.

Explorer 4-Door's three trim models include the top-line Eddie Bauer, featured here, whose sport bucket seats now feature 6-way power adjustment (see your dealer for date of availability).



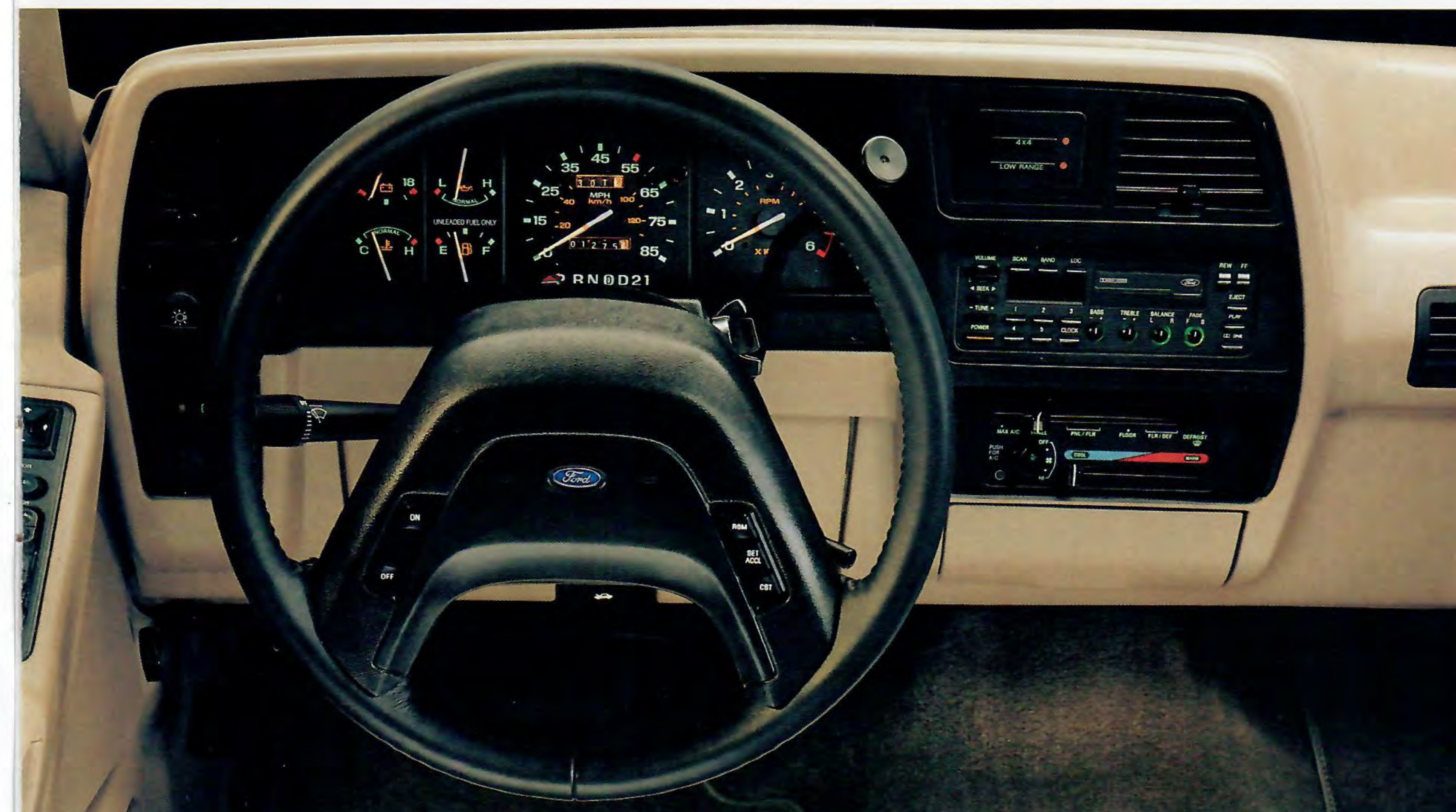
At left: The Explorer 4-Door features the versatility of 60/40 split rear seats to go along with its best-in-class overall spaciousness. The cargo cover is standard in XLT and Eddie Bauer, optional in XL.



Push-button controls for the Touch Drive electric shift transfer case (standard in all 4x4s) are located on the instrument panel — a more convenient arrangement than the floor-mounted shift found in other 4x4 compact utility vehicles.



Controls for power windows/locks and electric remote mirrors (standard in Eddie Bauer) are ergonomically positioned and can be identified by touch alone. The new "express down" driver's window lets you lower it completely at the touch of a switch.



Above: The Eddie Bauer 4-Door interior with reclining cloth sport bucket seats in Mocha (see your dealer for dates of availability of the cloth sew style shown and the 6-way power adjustment feature). Privacy™ glass, speed control and tilt steering wheel, power windows/door locks and electric remote-control mirrors are also standard. Garment and duffel bags are shipped to you from Eddie Bauer.

At left: The ergonomic instrument cluster includes a full gauge package including tachometer. In a pod to the right of the cluster are (1) the Touch Drive 4x4 control module; (2) the stereo system; and (3) the heating/cooling/defroster controls.

Some equipment shown on these pages is optional.





THIS MAY VERY
WELL BE THE
PERFECT FAMILY
VEHICLE YOU
HAVE BEEN
LOOKING FOR.

Discover for yourself what so many have already found — that the Explorer 4-Door offers just about everything you could possibly want in a vehicle for family travel.

Roominess. Comfort. Style. Versatility. Smooth, capable ride and handling. Plenty of fuel-injected 4.0L V-6 power, enough to tow a boat or camper weighing more than 5,000 pounds (see page 15 for more on trailer towing).

Excellent value, too, in the XL and XLT 4-Door models.

The superbly equipped XLT has speed control/tilt wheel, Privacy™ glass, and much more (see page 14.)

Both XL and XLT provide seating for five. Or carry six passengers with the 60/40 split bench front seat, an option that isn't available in most other compact utilities.

Choose the Explorer 4x2. Or the 4x4 model with its exclusive Touch Drive electric shift transfer case delivering 4-wheel traction at the simple touch of a button.



Above: Explorer XLT in Medium Platinum Clearcoat Metallic. XLT Preferred Equipment Package 941A includes air conditioning, electronic premium stereo radio/cassette system, and deluxe tape stripe.

At left: Explorer XL in Twilight Blue Clearcoat Metallic.

At right: Explorer XLT interior in Medium Grey with optional 3-passenger 60/40 split bench front seat.

Some equipment shown on these pages is optional.



THE WINNING
DESIGN AND
ENGINEERING
OF AMERICA'S
TOP COMPACT
UTILITY VEHICLE

Explorer is engineered with emphasis on excellent all-around performance to satisfy the wide variety of personal uses for which this compact utility is designed.

Explorer's 4.0L multi-port fuel-injected V-6 has the power and torque you need, on or off the road. The ride is smooth, and the handling is capable. The steering is improved, more responsive. And the power-assist brakes feature a rear anti-lock system controlled by computer.



Explorer has more overall passenger and cargo space than any other vehicle in its class. The 4-Door model's cargo volume is 42.6 cu. ft. with the rear seat backs up; 81.6 cu. ft. with the seat backs lowered.

The 4.0L multi-port fuel-injected V-6 is controlled by Ford's sophisticated EEC-IV computer. EEC-IV controls numerous operations affecting overall performance — in effect, fine-tuning the engine. A 5-speed manual transmission with close-ratio gearing and synchronized reverse gear is standard. A 4-speed automatic with column-mounted shift is optional.

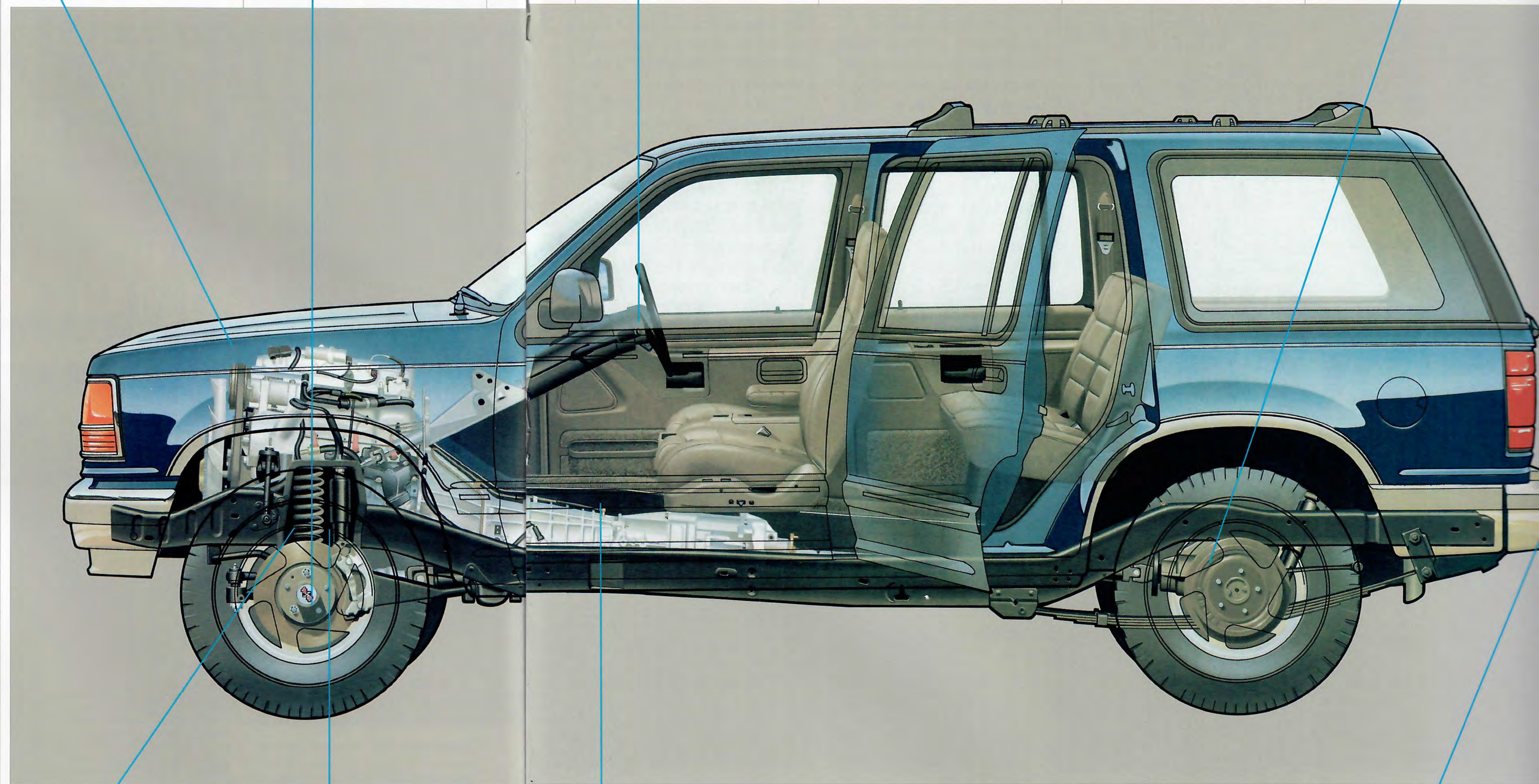
The 4x4 has standard auto-locking front hubs with Touch Drive transfer case. Features include on-the-fly shifting from 2WD to 4WD-High and back at normal road speeds, and an electromagnetic clutch that spins up the drive system from zero to driving speed in milliseconds. Manual-locking front hubs with manual-shift transfer case are optional.

Explorer's power-assisted steering system is designed for precise metering of the steering fluid flow for greater steering responsiveness to directional changes. The system has also been refined to provide a tighter feel of the wheel and more positive on-center performance.

Illustrated at right: The standard full-size spare tire is mounted in a carrier between the rear frame rails beneath the load floor, a design feature that contributes to Explorer's impressive amount of cargo space. The tire is lowered with a crank mechanism.



Explorer features front disc/rear drum brakes with rear anti-lock brake system. When braking-induced rear wheel lockup is detected, the system is designed to inhibit complete rear wheel lockup and help you come to a straighter stop under most operating conditions.

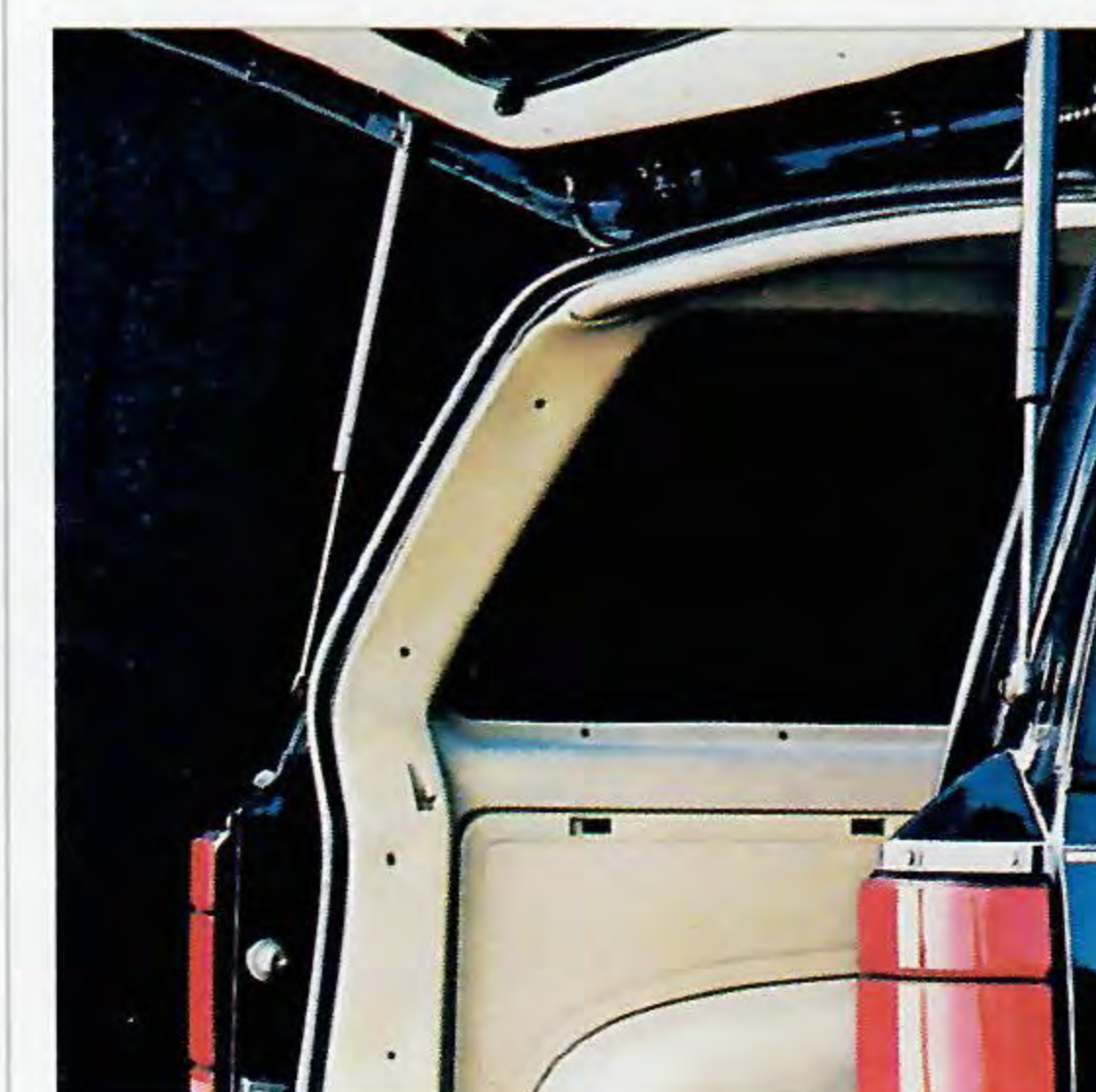


Twin-I-Beam (4x2) and Twin-Traction Beam (4x4) front suspension systems feature an axle/coil spring assembly for each wheel, providing independent wheel action for ride smoothness and control. The front coil springs and rear 2-stage multi-leaf springs are computer-selected to match the vehicle's passenger- and cargo-carrying requirements.

Nitrogen gas-pressurized shock absorbers contribute to a smooth and controlled ride by suppressing the foaming action of the hydraulic fluid caused by rough or bumpy road conditions. The standard front and rear stabilizer bars, connecting the axles to the frame, function as torsion bars to help improve handling.

The ladder-type frame features full-length, heavy-gauge channel side rails and six crossmembers, providing a solid foundation for the body and strength for trailer towing.

Illustrated at right: You can access the spacious cargo compartment by raising the entire steel liftgate or the window.



A properly equipped Explorer can tow up to 3,500 pounds with the standard rear step bumper, or a maximum trailer weight of 5,400 pounds (4x2) or 5,200 pounds (4x4). Towing capacity depends on model (2-door or 4-door) and choice of equipment (4x2 or 4x4; transmission; axle ratio; and type of towing receiver or hitch, if any), as well as number of passengers and amount of cargo. Towing hitches and receivers are made by manufacturers other than Ford. For more detailed information, see page 15.

THE EXCITING
2-DOOR SPORT.
IT'S POWERED
BY A MULTI-PORT
FUEL-INJECTED
4.0L V-6. AND
YOUR DRIVING
ENTHUSIASM.

If you are the kind of person who, given a choice, would much rather be out driving than inside sitting, you will really enjoy taking the wheel of the exciting Explorer 2-Door Sport.

With the Sport's power and handling, you're in for a lot of fun, whether you're cruising on highway pavement or traveling off-road.

If you are into 4-wheeling, you'll especially appreciate the choice of auto-locking front hubs with the exclusive Touch Drive electric shift transfer case, or manual hubs and transfer case with its basic mechanical operation.

Explorer packs plenty of muscle. Under the hood are 4.0 liters of multi-port fuel-injected and computer-controlled V-6 power.

Take hold of the standard 5-speed manual overdrive

floor-mounted shifter, or the electronic 4-speed automatic overdrive transmission with shift on the column.

Ford engineers, you'll fast discover also, have done a remarkable job in providing the handling capability you'd expect to go along with this V-6 performance.

And impressive, too, is the ergonomics of Explorer's interior design. The seating is firm and supportive. The controls are easy to reach and operate. And the gauges are clear and easy to read.

Now you need only add to all of this the 2-Door Sport's youthful style, its comfort and convenience features, its versatility, and its best-in-class overall spaciousness.

You'll see why Explorer has been far and above the best-selling compact sport utility in America.



A feature contributing to the Explorer 2-Door's versatility is the 50/50 rear split bench seat. Lower either one or both seat backs. With both raised, there are 32.6 cu. ft. of cargo space; lower both seat backs and cargo space increases to 69.4 cu. ft.



At right: optional cloth sport bucket seats with console in Crystal Blue.



A retractable cargo cover conceals valuables you would want to keep out of sight.

At right: Explorer 2-Door Sport in Brilliant Blue Clearcoat Metallic with unique Black lower two-tone treatment. The P235 outline white letter all-terrain tires, included in Preferred Equipment Package 931A, are mounted on standard deep-dish cast aluminum wheels.

Some equipment shown on these pages is optional.





IN YOUR 2-DOOR EXPLORER EDDIE BAUER, YOU'RE DRIVING IN THE STYLE YOU HAVE WORKED SO HARD TO EARN.



Above: Eddie Bauer 2-Door with unique two-tone in Raven Black/Mocha. Privacy™ glass, roof rack, P235 OWL all-terrain tires, aluminum wheels with Mocha-color accent, and rear window wiper/washer/defroster are standard. Inside, there are sport bucket seats (optional leather seating

surfaces shown above), 6-way power driver's seat adjustment (see your dealer for date of availability), speed control/tilt steering wheel, power windows and door locks, and electric remote-control mirrors. What's more, garment and duffel bags are sent to you from Eddie Bauer.

The 2-Door Eddie Bauer takes the winning design and performance of the popular Explorer nameplate into a special dimension of personal style and luxury.

The name "Eddie Bauer," widely known for quality outdoor apparel, says it all by itself. Which is why we chose it to represent our top-of-the-line Explorer.

Driving this uniquely trimmed and superbly appointed sport utility is a rewarding experience, one that's meant to be enjoyed by successful people of independent mind and adventurous spirit.



EQUIP YOUR FORD EXPLORER TO SUIT YOUR INDIVIDUAL STYLE.

From left to right: deluxe steel wheel with trim rings; full wheel cover; deep-dish cast aluminum wheel; luxury cast aluminum wheel with Mocha accent (Eddie Bauer only). See page 14 for application by trim level.

The roomy 4-Door and sporty 2-Door Explorers each come in three trim models, in 4x2 or 4x4.

Each model has its list of standard features and also a Preferred Equipment Package — a group of popular options that makes it easy to buy the Explorer that best suits your lifestyle. Options available separately are also listed.

Shown here are just a few of the many features that make Explorer a pleasure to own and drive. Some are included in select Preferred Equipment Packages.

High towing capability makes Explorer an excellent vehicle for your recreational needs.



The rear window wiper/washer/defroster (standard on Sport, Eddie Bauer and XLT) clears the window of rain, mist, or frost.



The tilt-up open air roof can be flipped open or removed. The roof rack (standard on Eddie Bauer) is also shown.



Privacy™ glass is standard in Sport, XLT and Eddie Bauer, and optional in XL.



The optional Ford JBL Audio System features nine speakers placed in strategic locations for a full sound reproduction experience. A tweeter and mid-range speaker are paired in sealed enclosures in four locations for controlled system performance. A subwoofer, sealed in a special enclosure and powered by its own amplifier, provides strong bass performance. The bi-amplified system has a total of 145 watts of power to provide 105 dB SPL acoustic output.

The Ford JBL Sound System, customized to the Explorer's environment, is available with (1) the electronic premium cassette radio that includes AM/FM stereo, switchable Dolby® and DNR™ noise reduction, as well as seek tuning and scan capability for both the radio and cassette player, or (2) the outstanding quality and performance of digital recording reproduced through the optional Ford Compact Disc Player (shown above). It includes a locking opening, automatic and manual search modes, a random play feature, and more.

Dolby® is a registered trademark of Dolby Laboratories Licensing Corp. DNR™ is a trademark of National Semiconductor Corp.



6-YEAR/100,000-MILE CORROSION PROTECTION

Corrosion warranty coverage for outer body panel rust-through is 6 years or 100,000 miles, whichever comes first. See your Ford Dealer for a copy of this limited warranty.



Optional Ford Extended Service Plans cover major components on new Ford cars and light trucks for longer than the vehicle's basic warranty. Your Ford Dealer has full details.

MOTORCRAFT REPLACEMENT PARTS

Genuine Ford and Motorcraft original equipment replacement parts meet the same high standards as those installed in production.



"Tread Lightly" is an educational program designed to increase public awareness of land-use regulations and

responsibilities in our nation's wilderness areas. Ford joins the U.S. Bureau of Land Management in encouraging you to help preserve our national forests and other public and private lands by "treading lightly."



Ford Credit's Red Carpet Lease[®] program makes driving a new Ford even more pleasurable. With it, qualified lessees can drive a new car or truck every few years, and can generally select a more expensive vehicle (or one with more options) at a lower monthly payment. See your dealer today for details on Red Carpet Lease.

OPTIONS AVAILABILITY

Options shown or described in this catalog are available at extra cost and may be offered only in combination with other options or subject to additional ordering requirements or limitations.

