

FORD

'93

# EXPLORER



## 1993 EXPLORER

Since its introduction two years ago, Explorer has been America's best-selling compact utility. Given Explorer's performance, versatility and best-in-class room and comfort, there's certainly little wonder.

Contemporary in style, aerodynamic in function, Explorer is powered by a multi-port electronically fuel-injected 4.0L V-6 engine. The handling is responsive and the

steering is precise. A 4-wheel anti-lock brake system is standard. The independent front suspension and

long wheelbase help smooth the ride.

The 4x4 model features the convenience of a dash-mounted Touch Drive transfer case control. And if you don't need the extra 4x4 traction, Explorer is available as a 4x2. Whether your choice is the 4-Door or 2-Door, you'll be driving a vehicle that's best in its class in overall spaciousness for passenger comfort and cargo-carrying utility.

*The top-of-the-line Explorer Eddie Bauer 4-Door model is outfitted with a unique two-tone paint treatment, shown here in Cayman Green Clearcoat Metallic/Mocha, one of eight available combinations.*



## EXPLORER 4-DOOR

Compare Explorer with any other compact utility and you'll discover one of the major reasons for its success: more overall space for passengers and cargo. Whether you choose the XL, XLT, or top-of-the line Eddie Bauer, you'll enjoy the comfort of Explorer's best-in-class spaciousness. By design, the long 112" wheelbase contributes to the



superior measure of rear seat leg room in the 4-Door. Not only is it spacious, it's also easy to get into and

out of, thanks to a comfortably low step-in height. Explorer also has the availability of 6-passenger seating (XL and XLT), something few other compact utilities offer.

And Explorer has the impressive list of standard comfort and convenience features you'd expect from a leader. Reclining front seat backs. The clarity of gauges — not lights,

including a tachometer to track the rpm of the potent 4.0L multi-port EFI V-6. Convenient steering column lever-mounted controls. Interval wipers. Rear seat heater ducts. An electronic AM/FM stereo sound system. Child-proof rear door locks. Handy two-way liftgate (open the entire liftgate or just the window). And many more.

Push-button controls (inset) for the Touch-Drive electric shift transfer case (standard in 4x4s) are located on the instrument panel — more convenient than the floor-mounted shift found in other 4x4 compact utilities.

The 60/40 rear bench seat (50/50 with 2-door models) lets you lower one or both seat backs to accommodate different passenger- and cargo-carrying needs.

Lower both seat backs to enjoy the full advantage of the Explorer 4-Door's 81.6 cubic feet of cargo capability (with 6-foot-long flat cargo load floor). No other leading compact utility vehicle can match it.



*At left: The ergonomic instrument cluster includes a full gauge package including tachometer. In a pod to the right of the cluster are (1) the Touch Drive 4x4 control module; (2) the stereo system; and (3) the heating/cooling/defroster controls.*

*Some equipment shown on these pages is optional.*

*Below: The Eddie Bauer 4-Door interior with reclining sport bucket seats and leather seating surfaces. Garment and duffel bags are shipped to you from Eddie Bauer.*



## CAPABILITY AND VALUE

The nineties are seeing the emergence of a new kind of family car. Practicality and capability are being rendered stylishly. Convention is thrown to the wind. Discover for yourself what so many have already found — that the 4-Door Explorer offers just about everything you could possibly want in

**Explorer 4-Door just might be the ultimate family vehicle. And you'll find excellent value in all Explorer models.** a family vehicle. Comfort, for example. Style. Versatility. Roominess. Smooth, capable ride and handling. Plenty of fuel-injected 4.0L V-6 power, enough, when properly equipped, to tow a boat or camper weighing more than 5,000 pounds (see page 13 for more on Explorer trailer towing). And the peace of mind that comes with a standard 4-wheel anti-lock braking system.

There's excellent value, too, whether you choose the XL, XLT or Eddie Bauer. The superbly equipped XLT has standard items like power windows and door locks, speed control/tilt wheel and more. The luxurious Eddie Bauer adds outline-white-letter tires



and a stylish luggage rack along with its special trim

*Among XLT standard features is a handy cargo cover.*

(see complete equipment list on page 14). If you conclude that Explorer indeed has a lot going for it, that's exactly the conclusion so many have already come to. That's why it's America's best-selling compact utility.

*Below: Explorer XLT 4-Door in Brilliant Blue Clearcoat Metallic. Preferred Equipment Package 941A includes air conditioning, electronic premium radio/cassette, and deluxe tape stripe.*



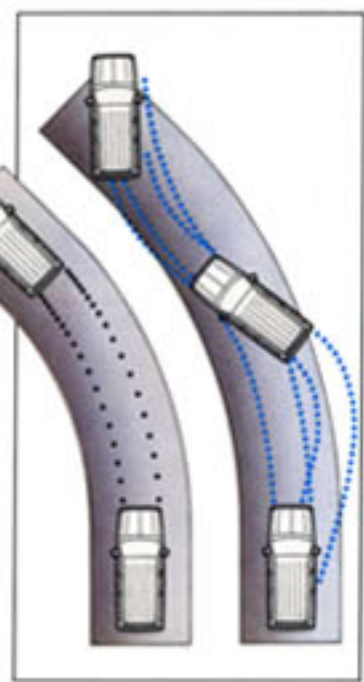
*Left: Explorer XLT interior in Royal Blue with Preferred Equipment Package 941A and optional 3-passenger 60/40 split bench front seat.*



## ENGINEERING & SAFETY

Explorer is engineered with emphasis on excellent all-around performance to satisfy a wide variety of personal uses and to maximize driving control and enjoyment.

The standard 4.0L multiple-port fuel-injected V-6 engine has the power and torque you need, whether you're on or off the road. The ride is smooth, thanks in part to



the nitrogen gas-pressurized shock absorbers. The handling, enhanced by front and rear stabilizer bars, is capable. The power steering system is

designed for precision and response, and provides a very positive on-center feel.

### EXPLORER SAFETY

Driving is more enjoyable when you're equipped for the unexpected. In addition to the performance attributes listed above, the 1993 Explorer features power brakes with a standard 4-wheel anti-lock system to help you come to a faster stop with greater straight-line stability. Guard beams in the doors help reduce the risk of injury from most side impacts. And all Explorer 4-door models feature child-proof rear door locks.



*Explorer features power front disc/rear drum brakes with a 4-wheel anti-lock brake system. The rear brakes work in tandem while the front brakes are individually controlled to stop the vehicle faster and with greater straight-line stability and steering control on wet, dry or icy pavement than conventional brake systems.*

*Explorer's power-assisted steering system is designed for precise metering of the steering fluid flow for greater steering responsiveness to directional changes. The system also provides a tighter feel of the wheel and more positive on-center performance.*

*Twin-I-Beam (4x2) and Twin-Traction Beam (4x4) front suspension systems feature an axle/coil spring assembly for each wheel, providing independent wheel action for ride smoothness and control. The front coil springs and rear 2-stage multi-leaf springs are computer-selected to match the vehicle's passenger- and cargo-carrying requirements.*

*Explorer has more overall passenger and cargo space than any other vehicle in its class. The 4-Door model's cargo volume is 42.6 cu. ft. with the rear seat backs up; 81.6 cu. ft. with the seat backs lowered.*



*The rear window wiper/washer/defroster (standard on Sport, Eddie Bauer and XLT) helps clear the window of rain, mist, or frost.*

*Limousine-type doors merge into the roofline and feature a hidden drip rail system. They help make Explorer more aerodynamic — and stylish.*

*Explorer's spacious cargo compartment can be accessed by raising the entire liftgate or just the window.*



*The ladder-type frame features full-length, heavy-gauge channel side rails and six crossmembers, providing a solid foundation for the body and strength for trailer towing.*

*The 4.0L multi-port fuel-injected V-6 is controlled by Ford's sophisticated EEC-IV computer. EEC-IV controls numerous operations affecting overall performance — in effect, fine-tuning the engine. A 5-speed manual transmission with close-ratio gearing and synchronized forward and reverse gears is standard. A 4-speed automatic with column-mounted shift is optional.*

*The 4x4 has standard auto-locking front hubs with Touch Drive transfer case. Features include on-the-fly shifting from 2WD to 4WD-High and back at normal road speeds, and an electromagnetic clutch that spins up the drive system from zero to driving speed in milliseconds. Manual-locking front hubs with manual-shift transfer case are optional.*

*Nitrogen gas-pressurized shock absorbers contribute to a smooth and controlled ride by suppressing the foaming action of the hydraulic fluid caused by rough or bumpy road conditions. The standard front and rear stabilizer bars, connecting the axles to the frame, function as torsion bars to help improve handling.*

*A properly equipped Explorer can tow up to 3,500 pounds with the standard rear step bumper, or a maximum trailer weight of 5,600 pounds (4x2) or 5,400 pounds (4x4). Towing capacity depends on model (2-door or 4-door) and choice of equipment (4x2 or 4x4; transmission; axle ratio; and type of towing receiver or hitch, if any), as well as number of passengers and amount of cargo. Towing hitches and receivers are made by manufacturers other than Ford. For more detailed information, see page 13.*

*The standard full-size spare tire is attached to a carrier between the rear frame rails beneath the load floor, a design feature that contributes to Explorer's impressive amount of cargo space. The tire is lowered with a crank mechanism.*



## 2-DOOR SPORT

If, given a choice, you'd much rather be out driving than inside sitting, you're probably the type who'll really enjoy taking the wheel of the exciting Explorer 2-Door Sport.

With the Sport's power and handling, you're in for fun, whether you're cruising on highway pavement or traveling off-road.

And if the adventure of 4-wheeling is your preference, you have a choice of auto-locking front hubs (with the convenience of the Touch Drive electric shift transfer case), or manual hubs and transfer case with mechanical operation.

Like all Explorers, the 2-Door Sport packs plenty of muscle. Under the hood are 4.0 liters of multi-port fuel-injected and computer-controlled V-6 power. A floor-mounted 5-speed manual overdrive is standard, or choose the electronic 4-speed automatic overdrive option with shift on the column.



**Above:** Optional cloth sport bucket seats with console in Opal Grey.

**Opposite page:** Explorer 2-Door Sport in Vibrant Red with unique Black lower two-tone treatment.

**Right:** A feature contributing to the Explorer 2-Door's versatility is the 50/50 rear split bench seat. Lower either one or both seat backs.



## EDDIE BAUER 2-DOOR

Some things seem to go together naturally. The name "Eddie Bauer" is widely known for quality outdoor apparel. That's exactly why we chose it to represent our top-of-the-line Explorer. Two products conceived with quality as the top priority. A perfect fit.

The 2-Door Eddie Bauer takes the winning design and performance of the popular Explorer nameplate into a special dimension of personal style and luxury.

The place to best enjoy it is, of course, out on the road. Driving this uniquely trimmed and superbly appointed sport utility is indeed a rewarding experience, one meant to be enjoyed by successful people of independent mind and adventurous spirit.



*Left: Eddie Bauer sport buckets shown with optional leather seating surfaces. Garment and duffie bags are sent to you from Eddie Bauer.*

*Below: Eddie Bauer 2-Door with unique two-tone in Raven Black/Mocha. High towing capability makes Explorer an excellent vehicle for recreational needs.*



## EXPLORER EQUIPMENT

4-Door and 2-Door Explorers are each offered in three trim levels in 4x2 or 4x4.

Each has its list of standard features and a Preferred Equipment Package (a group of popular options that makes it easy to buy the Explorer that best suits your lifestyle and

specific transportation requirements). Options available separately are also listed.

Shown here are just a few of the many features that make Explorer a pleasure to own and drive. Some of them are included in select Preferred Equipment Packages.



*The optional tilt-up open air roof can be flipped open or removed. The optional roof rack (standard on Eddie Bauer) is also shown.*



*The outstanding quality of digital recording is reproduced through the Ford Compact Disc Player, available with the optional Ford JBL Audio System.*



*From left to right: styled steel wheel; full wheel cover; deep-dish cast aluminum wheel; and luxury cast aluminum wheel. See page 14 for application by trim level.*



*Part of the optional special appearance package, the sport tape stripe is available with XL and Sport 2-door models.*

### MAXIMUM TRAILER TOWING WEIGHTS

	Axle Ratio	Maximum GCWR	2-Door		4-Door	
			4x2	4x4	4x2	4x4
4.0L V-6/4-Speed Automatic	3.08	6,000	2,100	-	1,900	-
	3.27	7,500	3,600	3,400	3,400	3,200
	3.73	9,500	5,600	5,400	5,400	5,200
4.0L V-6/5-Speed Manual	3.27	6,000	2,000	1,900	1,900	1,700
	3.73	7,000	3,100	2,900	2,900	2,700

NOTE: Engine/axle ratio combinations shown may not be available in all areas. Your Ford Dealer can supply availability information. All maximum trailer weights shown must be reduced by passenger and cargo weight in the towing vehicle. The following equipment may be required: super engine cooling; load-carrying hitch for towing trailers under 3,500 pounds with the standard rear step bumper; load-equalizing hitch for towing trailers over 3,500 pounds; and optional trailer towing package for when the Gross Combination Weight Rating (GCWR) exceeds 5,000 pounds. For specific information on recommended or required equipment, see your Dealer.

## EXPLORER PREFERRED EQUIPMENT PACKAGES AND OPTIONS

	2-Door Model			4-Door Model		
	XL 930A	Sport 931A	Eddie Bauer 932A	XL 940A	XLT 941A	Eddie Bauer 942A
Note: Package content is subject to change. P = Included in package S = Standard O = Optional						
<b>Appearance/Comfort/Convenience</b>						
Air conditioning	O	P	P	O	P	P
Power equipment group (1)	O	P	S	O	S	S
Tilt-up open air roof (deletes reading lamp)		O	O	O	O	O
Rear window wiper/washer/defroster	O	S	S	O	S	S
Privacy™ glass	O	S	S	O	S	S
Cargo cover	O	S	S	O	S	S
Color-keyed carpeted floor mats	O	O	S	O	S	S
Bodyside moldings	O	S	S	O	S	S
Luggage rack (100-lb. capacity)	O	O	S	O	O	S
Speed control/tilt steering wheel	O	O	S	O	S	S
Running boards				O	O	O
Deluxe tape stripe					P	
Deluxe two-tone paint					O	
Special appearance package (2)	O	O				
Fog lamps	O	O				
Floor console/cupholders (with cloth 60/40 split bench only)				O	O	
Deep-dish cast aluminum wheels	O	S	O	O	O	O
Deluxe styled steel wheels (4x2 only)	O			O		
Luxury aluminum wheels		O	S		S	S
<b>Stereo Systems</b>						
Electronic AM/FM stereo/cassette player/digital clock	O	O	O	O	O	O
Electronic premium AM/FM stereo/cassette player/digital clock	O	O	P	O	P	P
Ford JBL audio system with cassette tape player		O	O		O	O
Ford JBL audio system with compact disc player		O	O		O	O
<b>Performance</b>						
4-speed automatic overdrive transmission	O	O	O	O	O	O
Performance rear axle (limited slip)	O	O	O	O	O	O
Manual locking hubs (4x4 only)	O	O		O	O	
Super engine cooling	O	O	O	O	O	O
Engine block heater	O	O	O	O	O	O
Trailer towing package (3)	O	O	O	O	O	O
P235 OWL all-terrain tires	O	P	S	O	O	S
<b>Seating</b>						
Cloth captain's chairs/console	O	P		O	S	
Cloth sport bucket seats/console (4)		O	S		O	S
Cloth 3-passenger 60/40 split bench seat/stowage bin				O	O	
Sport bucket seats with leather seating surfaces/console (4)		O	P		O	P
<b>Manual Transmission Special Value Package</b>						
Air conditioning	P			P		
Electronic premium AM/FM stereo with cassette player		P				
Speed control/tilt steering wheel		P				
Luggage rack					P	

## MAJOR STANDARD FEATURES

### Exterior

Aero-design halogen headlamps  
 Front bumper: bright with rub strip and spoiler (XL, XLT, Eddie Bauer); black with rub strip and spoiler (Sport)  
 Rear trailer-tow bumper  
 Tinted windshield, side/rear windows  
 Privacy™ glass: rear quarter and liftgate windows (Sport, Eddie Bauer 2-Door); rear quarter, rear door and liftgate windows (XLT, Eddie Bauer 4-Door)  
 Foldaway mirrors: black door-mounted (XL, Sport); electric remote-control (XLT, Eddie Bauer)  
 2-way liftgate: raise the entire liftgate or just the rear window  
 Wheel trim: full covers (XL 4x2); styled steel wheels (XL 4x4); deep-dish cast aluminum wheels (Sport); luxury cast aluminum wheels (XLT, Eddie Bauer)  
 Lower rocker panel moldings  
 Full-size spare tire, frame-mounted

### Interior

Seats: knitted vinyl reclining bucket seats (XL, Sport); cloth reclining captain's chairs/console (XLT); cloth reclining sport bucket seats/console (Eddie Bauer) (4)  
 Rear split seats: 2-passenger 50/50 (2-Door); 3-passenger 60/40 (4-Door)  
 Tachometer; fuel, engine temperature, voltmeter, oil pressure gauges; trip odometer  
 Column controls: turn signals, windshield wipers/washer, high beams, flash-to-pass  
 Light group: includes glove box, ashtray, engine compartment lights  
 Electronic AM/FM stereo with digital clock (may be deleted for credit)  
 Rear seat heater duct  
 Interval windshield wipers  
 Steering wheel: vinyl (XL); leather-wrapped (Sport, XLT, Eddie Bauer)  
 Visors: Driver and passenger with RH visor mirror (XL); illuminated driver and passenger visor mirrors plus auxiliary side visors (Sport, XLT, Eddie Bauer)  
 Child-proof rear door locks (4-Door)

(1) Power equipment group includes power windows/locks, electric remote-control mirrors and upgraded door trim.

(2) Includes fog lamps, black bodyside moldings and tape stripe.

(3) Towing package includes wiring harness, heavy-duty flasher, and super engine cooling.

(4) Includes 6-way power driver seat in 2-Door model, power driver and passenger seats in the 4-Door; plus power lumbar support.

## PRODUCT CHANGES

Following publication of the catalog, certain changes in standard equipment, options, prices and the like, or product delays, may have occurred which would not be included in these pages. Your Ford Dealer is your best source for up-to-date information.

Ford Division reserves the right to change product specifications at any time without incurring obligations.



## EXPLORER 4-DOOR DIMENSIONS

Wheelbase	111.9"	111.9"
Overall length	184.3"	184.3"
Overhang (front/rear)	29.6"/42.8"	29.6"/42.8"
Tread (front/rear)	58.3"/58.3"	58.3"/58.3"
Overall width	70.2"	70.2"
Width between wheelhouses	41.9"	41.9"
Overall height (empty — max.)	67.3"	67.3"
Step-in height (unloaded)	19.1"	20.1"
Load floor height (loaded)	25.2"	26.2"
Liftgate opening height	33.7"	33.7"
Axle clearance — loaded (rear)	6.3"	6.3"
Angle of approach — loaded	—	31.0°
Angle of departure — loaded	—	18.0°
Ramp breakover angle — loaded	—	15.0°
Cargo length with rear seat up	38.1"	38.1"
with rear seat down	72.9"	72.9"
Cargo volume with rear seat up	42.6	42.6
(cu. ft.) with rear seat down	81.6	81.6
Front head room	39.9"	39.9"
shoulder room	57.1"	57.1"
hip room	51.9"	51.9"
leg room	42.4"	42.4"
Rear head room	39.3"	39.3"
shoulder room	57.1"	57.1"
hip room	51.9"	51.9"
leg room	37.7"	37.7"
Seating capacity	5 or 6*	5 or 6*

\*Six-passenger seating with optional split bench front seat in XL and XLT models.

## COLORS AND TRIMS

Exterior Paint Colors	Interior Trim Colors			
	Royal Blue	Ruby Red	Opal Grey	Mocha
Raven Black*		■	■	■
Oxford White*	■	■	■	■
Vibrant Red		■	■	■**
Mocha Frost Clearcoat Metallic				■
Electric Red Clearcoat Metallic*		■	■	■
Cayman Green Clearcoat Metallic*			■	■
Deep Forest Green Clearcoat Metallic*			■	■
Dark Blue Clearcoat Metallic*	■		■	■
Brilliant Blue Clearcoat Metallic	■		■	
Opal Grey Clearcoat Metallic		■ <sup>†</sup>	■	
Silver Clearcoat Metallic	■	■	■	
Dark Cranberry Clearcoat Metallic*			■	■

\* Includes Mocha unique lower two-tone with Mocha interior trim only on Eddie Bauer.

\*\* Sport model only. <sup>†</sup> Not available on Sport.

## EXPLORER 2-DOOR DIMENSIONS

Wheelbase	102.1"	102.1"
Overall length	174.4"	174.4"
Overhang (front/rear)	29.6"/42.8"	29.6"/42.8"
Tread (front/rear)	58.3"/58.3"	58.3"/58.3"
Overall width	70.2"	70.2"
Width between wheelhouses	41.9"	41.9"
Overall height (empty — max.)	67.5"	67.5"
Step-in height (unloaded)	19.3"	20.1"
Load floor height (loaded)	27.7"	27.7"
Liftgate opening height	33.7"	33.7"
Axle clearance — loaded (rear)	6.3"	6.3"
Angle of approach — loaded	—	31.9°
Angle of departure — loaded	—	18.0°
Ramp breakover angle — loaded	—	16.2°
Cargo length with rear seat up	29.2"	29.2"
with rear seat down	63.1"	63.1"
Cargo volume with rear seat up	32.6	32.6
(cu. ft.) with rear seat down	69.4	69.4
Front head room	39.9"	39.9"
shoulder room	57.1"	57.1"
hip room	51.9"	51.9"
leg room	42.4"	42.4"
Rear head room	39.0"	39.0"
shoulder room	57.9"	57.9"
hip room	43.6"	43.6"
leg room	35.6"	35.6"
Seating capacity	4	4

## SPECIFICATIONS

Drivetrain:	4x2 or 4x4
Engine type:	4.0 liter V-6
Induction system:	Multi-port electronic fuel injection with EEC-IV computer
Compression ratio:	9.0:1
Transmissions:	Std. 5-speed manual overdrive; Opt. 4-speed automatic overdrive
Horsepower, SAE net:	160 @ 4500 rpm
Torque, SAE net:	220 lbs.-ft. @ 2500 rpm (manual transmission) 220 lbs.-ft. @ 2200 rpm (automatic transmission)
Battery:	72 AH; 650 CCA maintenance-free
Alternator:	95 amps
Frame:	Ladder-type, single channel with six crossmembers
Front suspension (4x2):	Twin-I-Beam axle, coil springs (computer-selected), gas-pressurized shock absorbers, stabilizer bar
Front suspension (4x4):	Twin-Traction Beam axle, coil springs (computer-selected), gas-pressurized shock absorbers, stabilizer bar
Rear suspension (4x2/4x4):	Semi floating-type rear axle (limited-slip differential optional), 2-stage variable-rate leaf springs (computer-selected), gas-pressurized shock absorbers, stabilizer bar
Steering:	Recirculating ball-type, power assisted
Brakes:	Power front discs/rear drums with 4-wheel anti-lock system
Fuel tank:	19 gallons
Wheels (type/size):	5-hole disc/15"x6.0J
Tires:	Std. P225 raised black letter all-season Opt. P235 outline white letter all-terrain (std. in Eddie Bauer)



## BUMPER-TO-BUMPER COVERAGE

The 36-month/36,000-mile bumper-to-bumper coverage of Ford's new vehicle limited warranty covers the complete vehicle (except tires, battery, service adjustments and other items covered under separate provisions) against defects in factory-supplied materials or workmanship. For complete information, see your Ford Dealer.



Optional Ford Extended Service Plans can cover major components on new Ford cars and light trucks for longer than the vehicle's basic warranty. Your dealer has full details.

## SPECIFY GENUINE FORD COLLISION REPAIR PARTS

Genuine Ford sheet metal and plastic replacement collision parts, such as hood, doors, fenders and bumper components, are the right choice — and for all the right reasons. Genuine Ford parts are equal to original parts in fit, finish, structural integrity and corrosion protection. Ford parts are the same as those used on new vehicles which are certified to meet all Federal Motor Vehicle Safety Standards. And all Ford sheet metal parts are covered by the exclusive Ford Lifelong Sheet Metal Guarantee. Ask your dealer to see a copy of this limited warranty. Don't settle for imitations. Ask your insurer to authorize genuine Ford collision parts.



Ford Credit offers advantageous financing and leasing arrangements for qualified customers, plus the convenience of making them right where you buy or lease your truck — at your Ford Dealer.



"Tread Lightly" is an educational program designed to increase public awareness of land-use regulations and responsibilities in our nation's wilderness areas. Ford joins the U.S. Bureau of Land Management in encouraging you to help preserve our national forests and other public and private lands by "treading lightly."

## OPTIONS AVAILABILITY

Options shown or described in this catalog are available at extra cost and may be offered only in combination with other options or subject to additional ordering requirements or limitations.

