



05 EXPLORER



> 13 Years At The Top And Climbing.

Everywhere from urban fast lane to rugged backcountry, Ford SUVs empower you with confident capability. Escape, Explorer Sport Trac, Explorer, Expedition and Excursion – each proudly proclaims its Ford heritage, yet each clearly makes its own statement. America's best-selling SUV for 13 years and counting, Explorer has also been the most trusted SUV for 12 years running* thanks to its loyal owners. They've even helped make Explorer the 1st and only SUV to have sold over 5 million since its inception. Now that's a compelling statement of trust.

*Based on repurchase numbers among '93-'04 new vehicle buyers.



Excursion

Expedition

Explorer

Explorer Sport Trac

Escape

2005 Ford Explorer

Power & Performance

03

AdvanceTrac® with All-New Class-Exclusive** Roll Stability Control™

Capability

05

Powerful V6 and V8 Engines
Independent Rear Suspension
Available Control Trac 4x4
Impressive Towing Capacity

Versatility

09

Flexible, Foldable Seating Options
Rear-Seat DVD Entertainment System
Cargo and Storage Capability

Safety & Security

15

Comprehensive Personal Safety System™
Available Safety Canopy™ System

Specifications

17

Genuine Ford Accessories
Model Highlights
Standard and Available Equipment

**Truck-based midsize SUV class.



Explorer Eddie Bauer _ Medium Wedgewood Blue Metallic
available crossbars

> Class-Leading Innovation.

Ford Explorer is the only vehicle in its class to feature AdvanceTrac® with the patented, all-new Roll Stability Control™ (RSC). Standard on every Explorer, this innovative system helps deliver the peace of mind and confidence every driver desires. AdvanceTrac is an electronic stability enhancement system that improves control on slippery surfaces like icy, gravel or rain-soaked roads. RSC detects potential rollover-type situations and quickly engages AdvanceTrac to help keep your tires firmly planted on the ground.

4 Essential Systems In 1

AdvanceTrac® with RSC – There are 4 major components of this integrated system: an Anti-lock Brake System, Traction Control, yaw control and a vehicle-roll motion sensor. It automatically utilizes these elements in varying combinations to help give you optimum control at all times.

Confident Stopping Power

Anti-lock Brake System (ABS) – This feature regulates brake pressure to help prevent wheel lockup and skidding when you're stopping the vehicle.

Amazing Grip

Traction Control – When the system detects a loss of traction, it quickly responds by reducing engine power when necessary and selectively applying brake force to the slipping wheel while transferring power to the opposite wheel. It helps give you a more seamless and controlled driving experience.

Responsive Handling

Yaw Control – This component helps you avoid skidding and fishtailing. When understeer (which leads to skidding) or oversteer (which leads to fishtailing) is detected, the system selectively applies individual brakes and modifies engine power to maximize control.

Added Stability

Vehicle-Roll Motion Sensor – Class-exclusive RSC utilizes a gyroscopic sensor to help monitor vehicle-roll motion approximately 150 times per second. If it detects the possibility of a rollover, the system automatically engages AdvanceTrac® to help keep all 4 wheels safely on the ground. This feature is especially beneficial when your vehicle is fully loaded.

Freedom Of Choice

On/Off Switch – For added security, AdvanceTrac® with RSC is automatically enabled each time the vehicle is started. However, this center-console button allows you to turn the system off on the rare occasion, such as during low-speed off-roading, or in deep snow or mud, when you may want the wheels to spin freely to help your tires "dig" for traction.



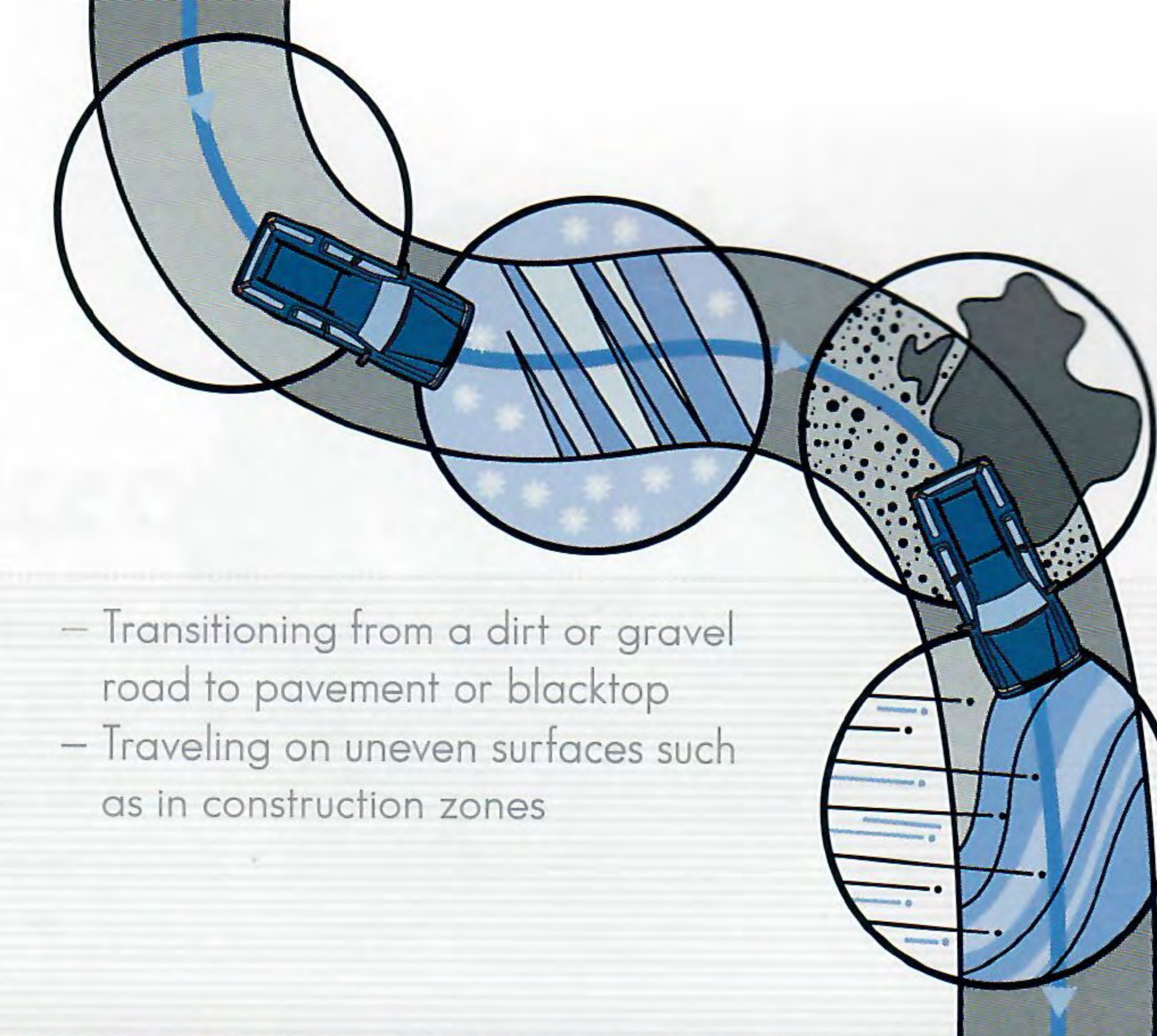
For more information on AdvanceTrac® with RSC visit www.fordvehicles.com.

Helps In Real-World Situations

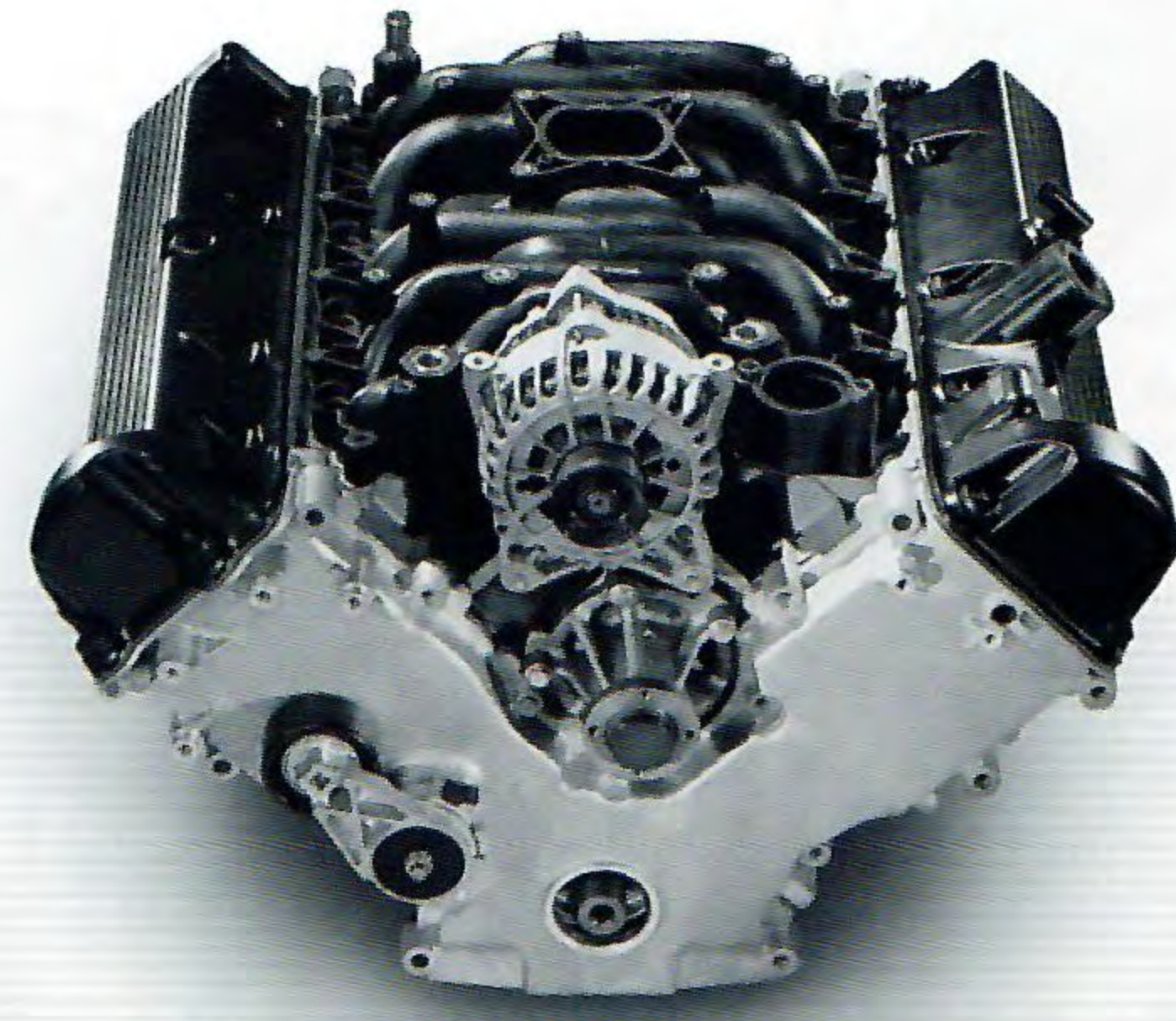
These are just a few of the scenarios during which Explorer's AdvanceTrac® with RSC can help you maintain maximum control and reduce the risk of rollover:

- Making an emergency maneuver to avoid something in the road
- Driving on slippery surfaces like gravel, icy/snowy/muddy or rain-soaked roads
- Transitioning from a dirt or gravel road to pavement or blacktop
- Traveling on uneven surfaces such as in construction zones

Remember that even advanced technology cannot overcome the laws of physics. It's always possible to lose control of a vehicle due to inappropriate driver input for the conditions.



Explorer Eddie Bauer _ Dark Stone Metallic _ available crossbars



Reach Your Peak Potential

Powerful V6 and V8 Engines – Explorer's standard 4.0L SOHC V6 engine delivers a substantial 210 hp and 254 lb.-ft. of torque, while the available 4.6L SOHC V8 engine supplies an impressive 239 hp and 282 lb.-ft. of torque. The V8 (shown) features a lightweight aluminum block and cylinder heads, as well as a fail-safe cooling system. Both engines are accompanied by a 5-speed automatic transmission.

> Relax In The Backcountry.

If your love of nature inspires you to take the scenic route, Ford Explorer can't wait to show you the way. But first, a few choices: Do you need the pulling power of a V8, or the standard V6? And do you prefer rear-wheel drive (4x2), or Control Trac® 4-wheel drive (4x4)? Either way, you'll enjoy the benefits of Explorer's class-exclusive Independent Rear Suspension. So rest assured, whether you live where the sun always shines, or where the snow's always falling, there's an Explorer just right for your life.



Sure-Footed Confidence

Independent Rear Suspension (IRS) – This class-exclusive feature allows each rear wheel to react independently when you're tackling an obstacle off-road or maneuvering on-road. It helps Explorer provide impressive driving control, responsive handling, and a remarkably smooth, comfortable ride.



Calm, Cool And Capable

Control Trac 4x4 – This available system is engineered to help keep you on the right track over many different types of terrain. It includes a 4x4 AUTO setting for everyday driving, a 4x4 HIGH setting for use in challenging on-road situations, and a 4x4 LOW setting for tough off-road conditions.



Power To Haul

Towing Capacity – Properly equipped, the standard 4.0L SOHC V6 engine achieves a maximum towing capacity of up to 5760 lbs. on 4x2 models and up to 5380 lbs. on 4x4 models. The available 4.6L SOHC V8 engine, properly equipped, increases capacity up to 7140 lbs. on 4x2 models and up to 7000 lbs. on 4x4 and AWD models.

Explorer XLT Sport _ Redfire Metallic
available crossbars and power moonroof



> Detailed Craftsmanship.

You know quality when you hear it, see it and feel it. As you close Explorer's door, you'll hear the "thunk" of its solid construction. And once inside, you'll see the ergonomically designed instrument panel. Then you'll feel the comfort of its available new 8-way power driver's seat with power lumbar. As you're driving, you'll appreciate the quiet thanks to Explorer's rigid, fully boxed frame, dual door seals, engine and hood insulation, laminated-steel dash panel, and dash insulator. Then again, maybe you'll just want to crank up the tunes.

Indulge In Acoustics

Audiophile Sound System – This available system includes a 6-disc in-dash CD changer with new MP3 capability* and 290 watts of peak audio power. Add the dealer-installed SIRIUS Satellite Radio** kit and service to get over 120 channels of music and entertainment.

*MP3 feature is late availability. **Call SIRIUS toll-free at (888) 539-7474 for more information. See your Ford Dealer for installation and activation details.



Control The Clutter

2nd-Row Center Console – Explorer's available Quad Bucket Seating Group includes this innovative console. Open it from the front to access a huge storage space in the bottom section. Open it from the rear to reveal 2 cupholders and even more storage in the top section.



Keep 'Em Happy

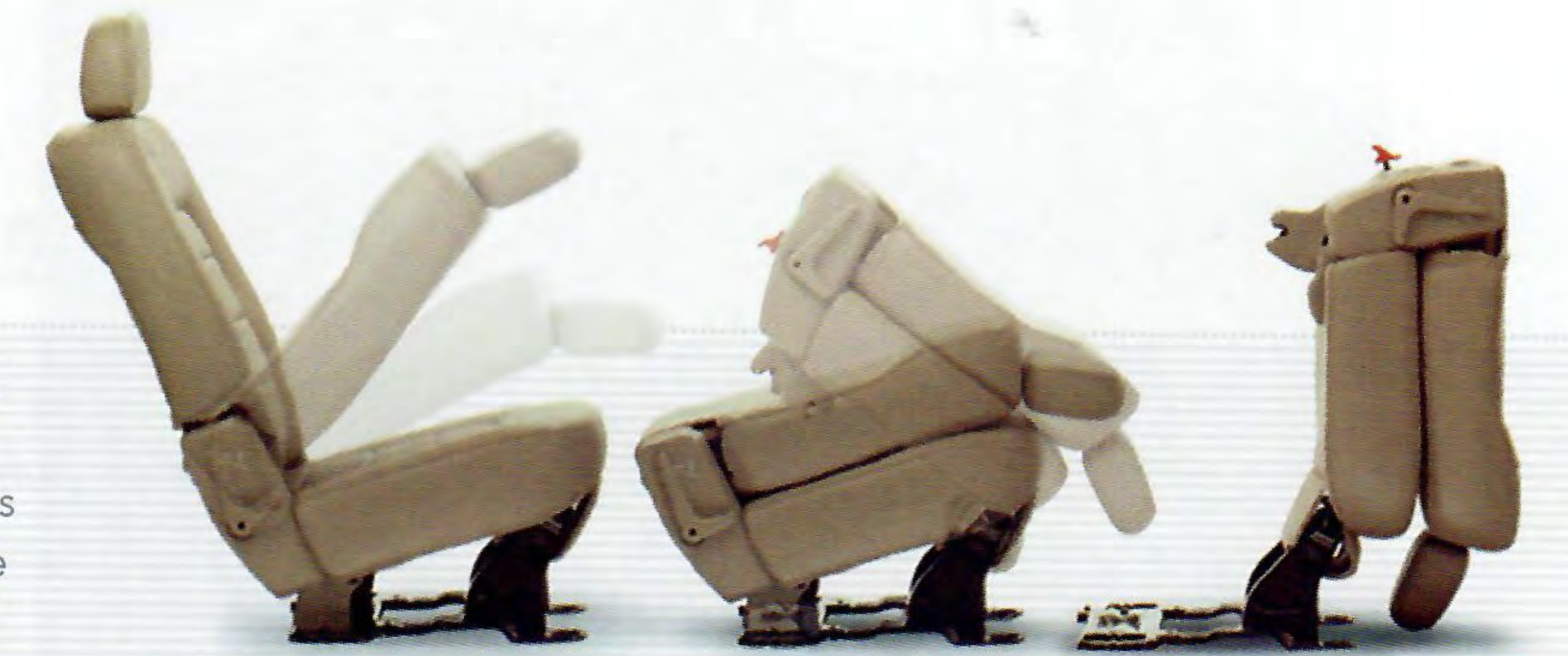
Rear-Seat DVD Entertainment System – The 7" color LCD screen folds down in the center. There's storage on the left for your favorite flicks. And the DVD player can also be used to listen to CDs separately from the in-dash audio system. Includes 2 sets of wireless headphones and a remote control. Available on all models except XLS and XLS Sport.



Explorer Limited _ Medium Parchment available Quad Bucket Seating Group and leather-trimmed 1st- and 2nd-row seats

Flip-Folding Flexibility With Recline

40/20/40 Split 2nd-Row Seating – The outboard sections of this available seat now recline for improved comfort. Plus, they can be lowered from either side and folded forward for quick access to the accompanying 3rd-row seating. You also get adjustable head restraints in all 3 seating positions.



Crank Up The Contrast

Unique Eddie Bauer Interior – This stylish two-tone Medium Parchment seating includes leather-trimmed 1st- and 2nd-row seats. The available 7-passenger seating configuration (shown left) includes a 40/20/40 split-folding 2nd-row seat and folding 3rd-row seat.



Bring On The Big Stuff

Cargo Capacity – With the 2nd and 3rd rows folded down, 7-passenger Explorer models provide 81.4 cu. ft. of space for you to fill with everything from home improvement supplies to a whole lot of camping gear. Be sure to extend the 3rd-row slider panel to create a continuous loadfloor.



Quickest and easiest 3rd-row folding seat in its class.
Cargo and load capacity limited by weight and weight distribution.

> All About Ease.

Explorer's incredible versatility wouldn't mean much if you needed assistance getting into it, or help raising its rear liftgate. Rest assured, you won't. We specifically designed Explorer to be accessible to all. In the rear, grocery and shopping bags can be stored after opening just the flip-up glass, not the entire liftgate. Need more space back there? No problem. Explorer's available 3rd-row folding seat is the quickest and easiest in its class. Incredibly functional, incredibly capable and incredibly easy to operate. That's Ford Explorer.



Convenient Cargo Access

Rear Liftgate with Flip-Up Glass – Loading and unloading smaller items is quick and easy thanks to the low liftover height of Explorer's flip-up glass. It unlocks with the press of a button on the remote key fob or on the liftgate. When you're done, a door lock/unlock button inside the rear cargo area helps you easily secure the vehicle.



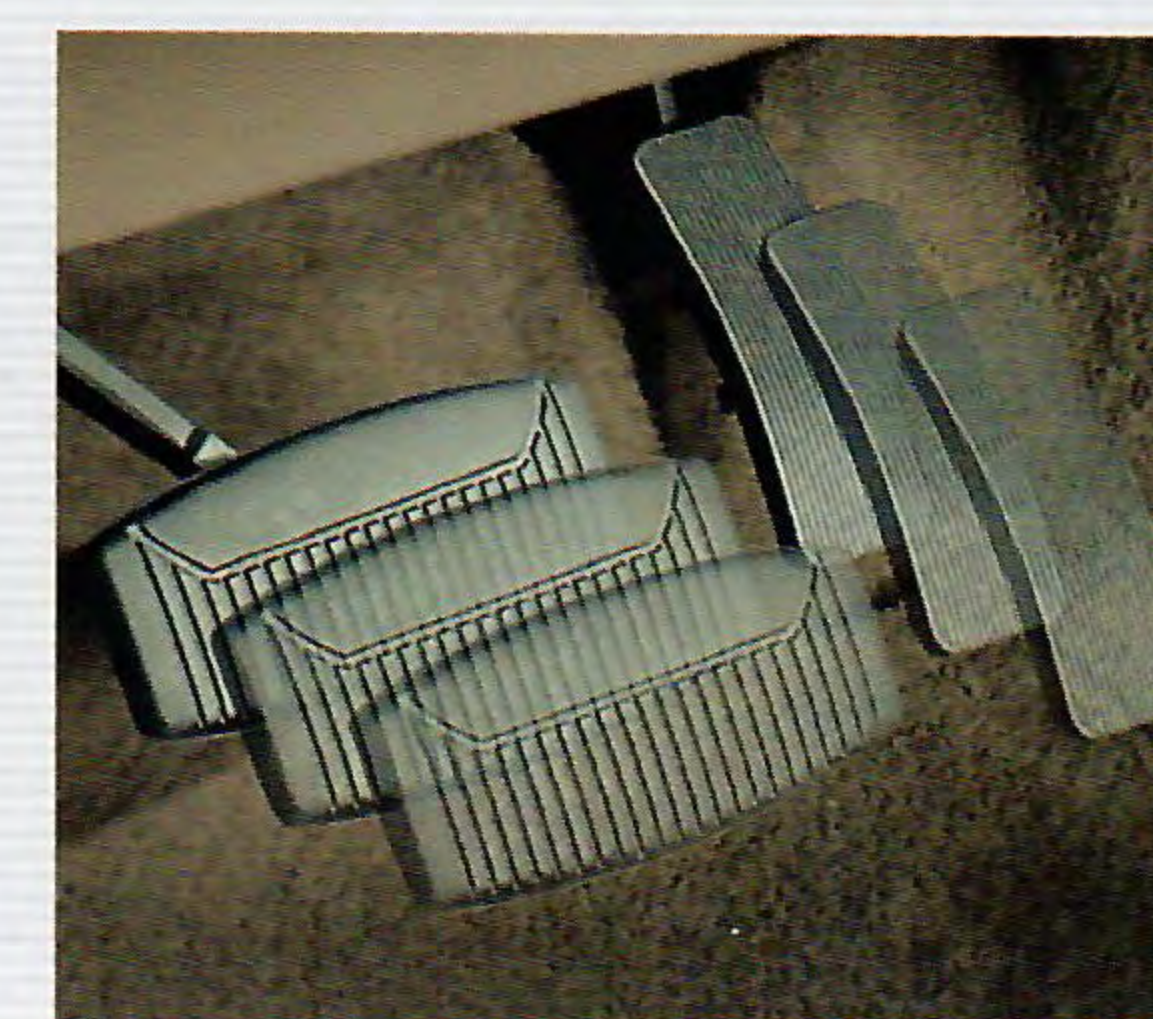
Be Prepared For Anything

Under-Floor Storage – No matter where you live and drive, there are always some basic items you like to keep in your vehicle. Explorer makes it easy for you to store the essentials with this convenient space hidden beneath the floor in your rear cargo area. Shown with 5-passenger seating.



Light Up Your Night

Security Approach Lamps – Another thoughtful touch, these available lamps cast pools of light around the front doors for easy nighttime entry and exit. Mounted in the sideview mirrors, they automatically activate whenever you pull a door handle or use the remote unlock feature.



Custom-Fit For Short Or Tall

Power-Adjustable Pedals – You'll fit just right in Explorer with this handy available feature. Simply press and hold a switch on the instrument panel to adjust both the brake and accelerator pedals forward or back until you find your optimum driving position.



Explorer Eddie Bauer – Medium Parchment available 7-passenger seating with leather-trimmed 1st- and 2nd-row seats



> Serious Peace Of Mind.

You'll be glad to know, every 2005 Ford Explorer comes equipped with 4-wheel disc anti-lock brakes. Ultra-high-strength steel is used to form the side-impact door beams. Autolocking doors activate once you get moving; one less thing for you to remember. And that's not all. The safety-conscious design of our Personal Safety System™ helped Explorer earn a "Best Pick" from the Insurance Institute for Highway Safety. In its 40-mph frontal offset crash test, Explorer outperformed all other major competitors in its class.*

*Includes Chevrolet Trailblazer/Blazer, Jeep, Grand Cherokee and GMC Envoy.



Backing You Up

Reverse Sensing System – This available convenience feature acts as a second pair of eyes when you're backing up. It uses a series of beeps to alert you to certain objects behind the vehicle. As you get closer, it beeps faster to help you gauge the distance.

Comprehensive Protection

Personal Safety System™ – Built into every Explorer, this system reacts to enhance your protection in the event of certain frontal collisions. While advanced sensors measure certain occupant conditions (such as whether or not safety belts are buckled), as well as the severity of the impact, the system automatically tightens the tension of the front safety belts and determines whether it should deploy the dual-stage front airbags, and at which energy level. This all happens in milliseconds. Simply put, the Personal Safety System optimizes key safety features in an accident.

Family Friendly

LATCH System and Child-Safety Locks – Standard in the 2nd row on every Explorer, LATCH is a system of lower anchors and tether anchors for child-safety seats. There are also tether anchors in the 3rd row. Once you have the little ones properly secured in the back, Explorer's standard child-safety rear door locks will help make sure they stay put.

Keeping Things Secure

Essential Security Features – Our SecurILock® passive anti-theft system and remote keyless entry are standard on every Explorer. Another great standard feature, our battery saver with headlamps-off delay "saves" your battery from running down by shutting off any lights (interior or exterior) accidentally left on after you've exited the vehicle.

Help From Above

Safety Canopy™ System – Available on all models, our patented Safety Canopy side-curtain airbags deploy from the headliner on both sides of the vehicle to cover nearly 2/3 of the glass area along the 1st and 2nd rows of seating. A rollover sensor directs their deployment in certain types of side-impact collisions or rollover events, and they remain inflated longer than the front airbags to help further protect occupants.



> Specifications

GENUINE FORD ACCESSORIES

See your dealer for these and other great dealer-installed accessories or visit us at fordaccessoriesstore.com.



Power From Afar

Remote Start – Get your vehicle warmed up (or cooled down) with this convenient system. You can use it to turn on the ignition, lock and unlock the doors, or activate the panic alarm – from up to 500 ft. away.



Quick, Convenient Access

Keyless Entry Keypad – No more standing out in the rain or other nasty weather trying to find your keys. Just walk up, enter the code, and you'll be inside in a flash. At night, backlighting makes it easy to see.



Hands On The Wheel

Mobile-Ease Hands-Free Communication System – Place and receive hands-free calls through the audio system with this Bluetooth® technology and your Bluetooth-equipped cell phone.



Gear Up For Winter Adventures

Ski/Snowboard Carrier – Available in 2 sizes, the small carrier holds up to 4 pairs of skis or 2 snowboards. The large carrier can handle as many as 6 pairs of skis or 4 snowboards.



Adapts To Your Needs

Smoker's Pack – If you're in need of an ashtray and lighter, just add this convenient pack. The center-console-mounted ashtray blends with your Explorer's interior styling, and it's removable for easy cleaning.



Bring On The Dirt

All-Weather Floor Mats – Deep grooves and raised ridges on these heavy-duty mats hold mud, slush and snow away from the vehicle carpeting. Available in colors that complement your Explorer's interior.

MODEL HIGHLIGHTS Each series includes the standard equipment of the previous series, except where additions/exceptions are noted.



XLS

16" full-face steel wheels • P235/70R16 all-season BSW tires • Black molded-in-color moldings and bumpers • Black roof rails • Black egg-crate-design grille • Power sideview mirrors • AM/FM stereo with single-CD player and clock • 1st-row cloth bucket seats • Manual air conditioning • Floor console with front power point • Message center



XLS Sport

16" painted cast-aluminum wheels • P235/70R16 all-season OWL tires • Black side step bars • Black wheel-lip moldings • Floor console with 1st- and 2nd-row power points and 2nd-row heat/AC vents • 1st- and 2nd-row carpeted floor mats



XLT

16" painted cast-aluminum wheels • P235/70R16 all-season BSW tires (4x2), OWL tires (4x4) • Body-color moldings and bumpers • Fog lamps • Security approach lamps • Chromed grille • Overhead console • 1st-row 6-way power sport bucket seats • Leather-wrapped steering wheel • Message center with outside temperature and compass display



XLT Sport

17" machined-aluminum wheels • P245/65R17 all-terrain OWL tires • Platinum-painted wheel-lip moldings • Platinum-painted side step bars • Automatic headlamps • Keyless entry keypad • Auto-dimming rearview mirror



Eddie Bauer

17" Sparkle Silver painted cast-aluminum wheels • P245/65R17 all-terrain OWL tires • Pueblo Gold-painted bumpers, lower moldings and wheel-lip moldings • Satin-nickel grille • Heated sideview mirrors • Two-tone leather-trimmed bucket seats • 2-position driver's-seat memory setting • Heated front seats • Dual-zone Electronic Automatic Temperature Control • Audiophile Sound System with 6-disc in-dash CD changer • Woodgrain interior accents



Limited

17" chrome-aluminum wheels • P245/65R17 all-terrain BSW tires • Body-color running boards • Chromed grille • Chromed roof rails • Monochromatic luxury leather-trimmed bucket seats • Teak woodgrain interior accents

Comparisons based on 2004 competitive models, publicly available information and Ford certification data at time of printing. Some features discussed may be optional. Vehicles shown may contain optional equipment. Features shown may be offered only in combination with other options or subject to additional ordering requirements or limitations. Following publication of the catalog, certain changes in standard equipment, options and the like, or product delays may have occurred which would be indicated in these notes. Your Ford Dealer is the best source for up-to-date information. Ford Division reserves the right to change product specifications at any time without incurring obligations.

STANDARD FEATURES

Mechanical

4.0L SOHC V6 engine
4-wheel disc Anti-lock Brake System (ABS)
5-speed electronic automatic transmission with overdrive lockout
AdvanceTrac® with Roll Stability Control™ (RSC)
Axle ratio – 3.55:1
Body-on-frame construction
Fuel tank – 22.5-gallon capacity
Power rack-and-pinion steering
Stabilizer bars – Front and rear
Suspension – 4-wheel independent

Safety/Security

Personal Safety System™ for driver and front passenger – With dual-stage airbags,* safety belt pretensioners, safety belt energy-management retractors, safety belt usage sensors, driver's-seat position sensor, crash severity sensor and restraint control module
Autolock – Doors lock automatically when driving
Battery saver
Belt-Minder® safety belt reminder
Brake/shift interlock
Bumpers – Energy-absorbing
Fuel pump inertia shutoff switch
Height-adjustable safety belts – 1st and 2nd rows
LATCH – Lower anchors (2nd-row outboard seats) and tether anchors for child-safety seats
Remote keyless entry system with illuminated entry
SecuriLock® passive anti-theft system
Side-impact door beams

Seating

5-passenger seating
2nd-row 60/40 split-folding bench seat (trimmed to match 1st-row seats)

Interior

Accessory delay for power features
Air conditioning
Assist handles
Coat hooks – 2 in 2nd row, 2 in cargo area
Dome lights – 1st row and cargo area
Front center-floor console with storage bin, 2 cupholders each in 1st and 2nd rows, power point, coin holder, tissue/map holder and pen holder
Front door map pockets with 20-oz. beverage holders
Loadfloor tie-down hooks – 4
Message center
Power door lock switch in cargo area
Power door locks with child-safety rear door locks
Power windows with one-touch-down driver's-side feature
Speed control – Steering-wheel-mounted
Storage area under cargo floor
Tilt steering column
Visors with covered mirrors (dual illuminated on XLT, XLT Sport, Eddie Bauer and Limited)

Exterior

Headlamps – Quad-beam system
Liftgate with flip-up glass and exterior release
Power, fold-away sideview mirrors (heated on Eddie Bauer and Limited)
Privacy glass (rear doors, rear quarter windows and liftgate window)
Roof rails – Black (chromed on Limited)
Solar-tinted glass (windshield and front doors)
Trailer tow – Class II hitch receiver with 4-pin connector
Windshield wipers – Front: speed-sensitive, variable-intermittent with washer; rear: 2-speed with washer and defroster

*Always wear your safety belt and secure children in the rear seat.

MODEL-SPECIFIC FEATURES & OPTIONS

	XLS (late availability)	XLS Sport (late availability)	XLT	XLT Sport
				Mechanical
				4.6L SOHC V8 engine with fail-safe cooling system
				16" full-face steel wheels
				16" painted cast-aluminum wheels
				17" machined-aluminum wheels
				P235/70R16 all-season BSW tires (XLT 4x2)
				P235/70R16 all-season OWL tires (XLT 4x4)
				P245/65R17 all-terrain OWL tires
				Control Trac® 4WD system (4x4)
				Tire Pressure Monitoring System
				Safety/Security
				Safety Canopy™ System
				Security approach lamps – Keyless-entry-activated, mounted in sideview mirrors
				Seating
				Cloth trim with 1st-row low-back bucket seats
				Cloth trim with 1st-row low-back sport bucket seats, 6-way power driver's seat with manual lumbar support and manual-adjust passenger's seat
				Leather-trimmed seats – Including 8-way power driver's seat with power lumbar support and 6-way power passenger's seat with manual lumbar support (vinyl 3rd row, if equipped)
				3rd-row cloth bench seat with 2nd-row easy-entry/-exit 40/20/40 split-folding bench
				Interior
				AM/FM stereo/single-CD player with MP3 capability (SIRIUS Satellite Radio capable)**
				AM/FM stereo/cassette/single-CD player with MP3 capability – 80 watts (SIRIUS Satellite Radio capable)**
				AM/FM Audiophile Sound System with 6-disc in-dash CD changer with MP3 capability – 290 watts (SIRIUS Satellite Radio capable)
				Auxiliary rear climate controls
				Cargo shade (not available with optional 3rd-row seat)
				Center floor console – Includes storage bin, 2 cupholders each in 1st and 2nd rows, 1st-row power point, coin holder, tissue/map holder, pen holder, 2nd-row heat/AC vents and 2nd-row power point
				Convenience Group – Includes auto-dimming rearview mirror, autolamp and keyless entry keypad
				Floor mats – Color-keyed carpeted (1st and 2nd rows)
				Leather-wrapped steering wheel – Black
				Overhead console – Includes 2 map/dome lights, ticket clip, sunglasses holder and garage door opener holder (not available with auxiliary rear climate controls or moonroof)
				Power-adjustable brake and accelerator pedals
				Rear-Seat DVD Entertainment System – Includes DVD player, fold-down 7" color LCD screen, remote control, video jacks for games and 2 wireless headphone sets††
				Exterior
				Bodyside moldings – Lower, black molded-in-color
				Bodyside moldings – Narrow, painted body-color
				Bodyside moldings – Lower, Platinum-painted with two-tone fascias
				Crossbars for roof rails – Black
				Fog lamps
				Grille – Chromed (black on XLS and XLS Sport)
				Power moonroof with shade
				Reverse Sensing System
				Running boards – Black
				Side step bars – Black on XLS Sport, Platinum gloss on XLT Sport
				Trailer Tow Prep Package – Class III/IV
				Wheel-lip moldings – Black molded-in-color on XLS Sport, Platinum-painted on XLT Sport
				XLT Appearance Package – Includes unique cloth seats and door-trim inserts and 17" Sparkle Silver-painted aluminum wheels, side step bars and roof rails

● Standard ○ Optional — Not Available

**MP3 capability and SIRIUS Satellite Radio are late availability. †MP3 capability is late availability. ††Requires moonroof and Safety Canopy System in combination or auxiliary rear climate controls.

Eddie Bauer

Limited

Mechanical

○ ○ 4.6L SOHC V8 engine with fail-safe cooling system
● — 17" Sparkle Silver cast-aluminum wheels
— ● 17" chrome-aluminum wheels
● — P245/65R17 all-terrain OWL tires
— ● P245/65R17 all-terrain BSW tires
○ ○ Control Trac 4WD system (4x4)
● ● Tire Pressure Monitoring System

Safety/Security

● ● Autolamp – Automatic on/off headlamps
○ ○ Safety Canopy System
● ● Security approach lamps – Keyless-entry-activated, mounted in sideview mirrors

Seating

● ● Luxury leather-trimmed seats, 1st-row heated bucket seats, 8-way power driver's seat with power lumbar support and 6-way power passenger's seat with manual lumbar support (two-tone on Eddie Bauer)
○ ○ 3rd-row cloth bench seat with 2nd-row easy-entry/-exit 40/20/40 split-folding cloth bench seat (vinyl 3rd row when ordered with leather-trimmed seats)
○ ○ Quad Bucket Seating Group[§] – 1st- and 2nd-row bucket seats and floor consoles

Interior

○ ○ AM/FM stereo/cassette/single-CD player with MP3 capability – 80 watts (SIRIUS Satellite Radio capable)**
● ● AM/FM Audiophile Sound System with 6-disc in-dash CD changer with MP3 capability† – 290 watts (SIRIUS Satellite Radio capable)
● ● Auto-dimming rearview mirror
○ ○ Auxiliary rear climate controls
○ ○ Cargo shade (not available with optional 3rd-row seat)
● ● Center floor console – Includes storage bin, 2 cupholders each in 1st and 2nd rows, 1st- and 2nd-row power points, coin holder, tissue/map holder, pen holder and 2nd-row heat/AC vents
● ● Convenience Group – Includes auto-dimming rearview mirror, autolamp and keyless entry keypad
● ● Dual-zone Electronic Automatic Temperature Control
● ● Floor mats – Color-keyed carpeted (1st and 2nd rows)
● ● Leather-wrapped steering wheel – Color-keyed
● ● Overhead console – Includes 2 map/dome lights, ticket clip, sunglasses holder and garage door opener holder (not available with auxiliary rear climate controls or moonroof)
○ ○ Rear-Seat DVD Entertainment System – Includes DVD player, fold-down 7" color LCD screen, remote control, video jacks for games and 2 wireless headphone sets†
● ● Steering-wheel-mounted audio and climate controls
○ ○ Ultimate Convenience Group – Includes power-adjustable pedals with memory and HomeLink® Universal Transceiver

[§]Requires available 3rd-row seat.

Eddie Bauer

Limited

Exterior

● — Bodyside moldings – Lower, Pueblo Gold-painted accent color
— ● Bodyside moldings – Lower, monochromatic body-color painted
○ ○ Crossbars for roof rails – Black
● ● Fog lamps
● ● Grille – Satin-nickel on Eddie Bauer, chromed on Limited
● ● Keyless entry keypad – Driver's-door-mounted
○ ○ Power moonroof with shade
○ ○ Reverse Sensing System
● ● Running boards – Color-keyed
— ○ Side step bars – Chromed
○ ○ Trailer Tow Prep Package – Class III/IV
● ● Wheel-lip moldings – Pueblo Gold-painted on Eddie Bauer, monochromatic body-color painted on Limited

Trailer Tow Prep Package – Class III/IV

- Frame-mounted hitch receiver
- 7-pin trailer wiring harness and connector, 7-pin to 4-pin adapter
- 3.73 non-limited-slip rear axle

ENGINES

	4.0L SOHC V6	4.6L SOHC V8
Horsepower (hp @ rpm)	210 @ 5100	239 @ 4750
Torque (lb.-ft. @ rpm)	254 @ 3700	282 @ 4000

TRAILER TOWING APPLICATIONS

Axle Ratio	Maximum Loaded Trailer Weight (lbs.)	
	4.0L V6	4.6L V8
3.55	3240	4x2 Class II
	3380	4x4 Class II
3.73	5760	4x2 Class III/IV
	5380	4x4 Class III/IV
3.55	3260	4x2 Class II
	3400	4x4 Class II
3.73	7140 ¹	4x2 Class III/IV
	7000 ¹	4x4 Class III/IV

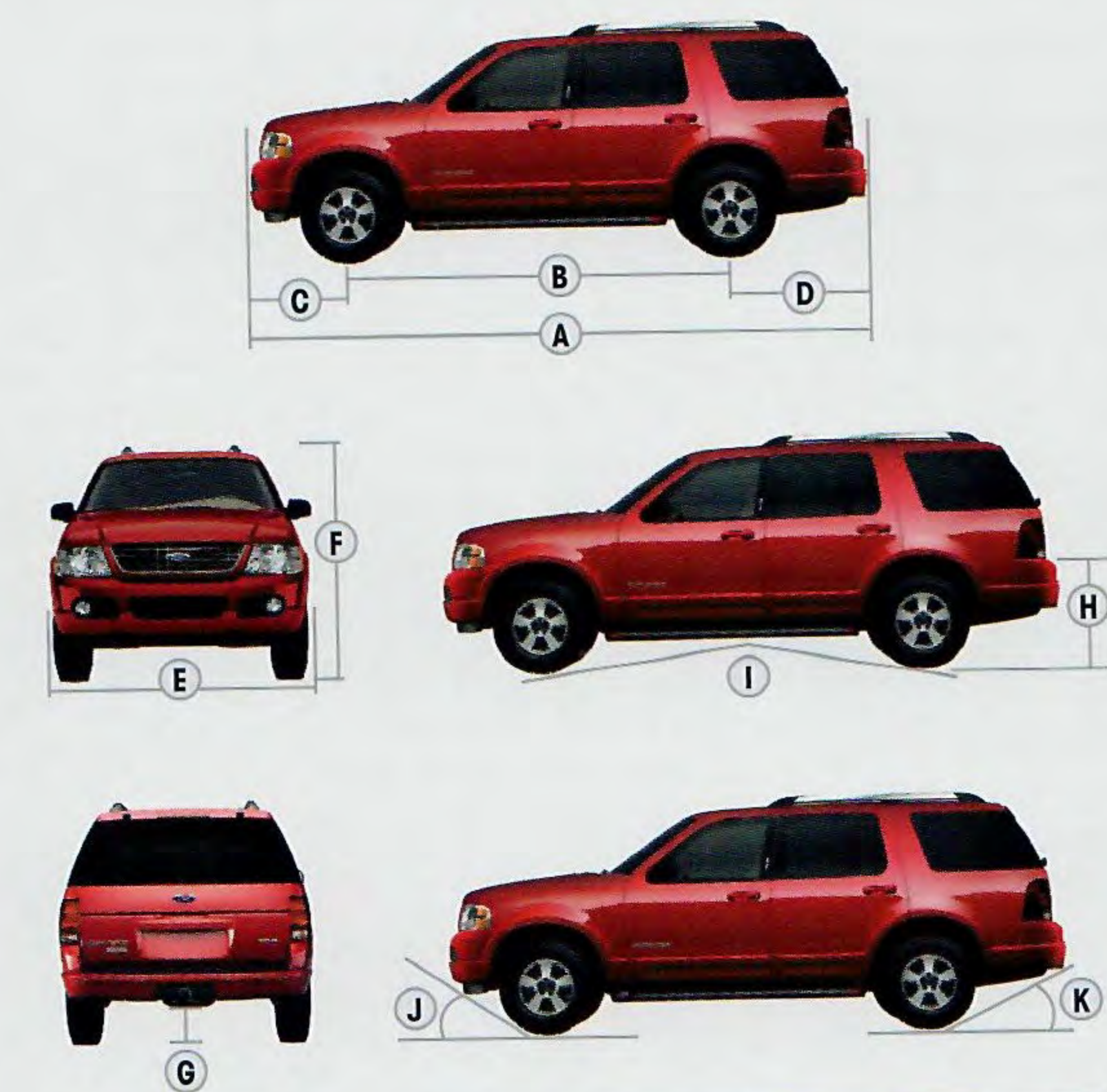
Maximum weights shown are for properly equipped vehicles with required equipment and a 150-lb. driver. Weight of additional options, equipment, passengers and cargo must be deducted from this weight. For additional information, see your Ford Dealer.

Cargo and load capacity limited by weight and weight distribution.

¹Deduct 500 lbs. when equipped with auxiliary climate controls.

DIMENSIONS

INTERIOR COLORS



Exterior	4x2/4x4
A. Overall length	189.6"
B. Wheelbase	113.7"
C. Overhang - Front	31.6"
D. Overhang - Rear	44.3"
E. Overall width (excl. mirrors)	72.1"
F. Height	72.1"
G. Ground clearance (rear axle)	9.4"
H. Loadfloor height	31.3"
I. Ramp breakover angle	19.2°
J. Angle of approach	24.7°
K. Angle of departure	27.3°

Interior	
1st row	
Head room	39.8"
Shoulder room	59.1"
Hip room	55.0"
Leg room	42.4"
2nd row	
Head room	38.8"
Shoulder room	58.9"
Hip room	54.2"
Leg room	36.8"
3rd row	
Head room	38.9"
Shoulder room	52.8"
Hip room	45.4"
Leg room	34.9"

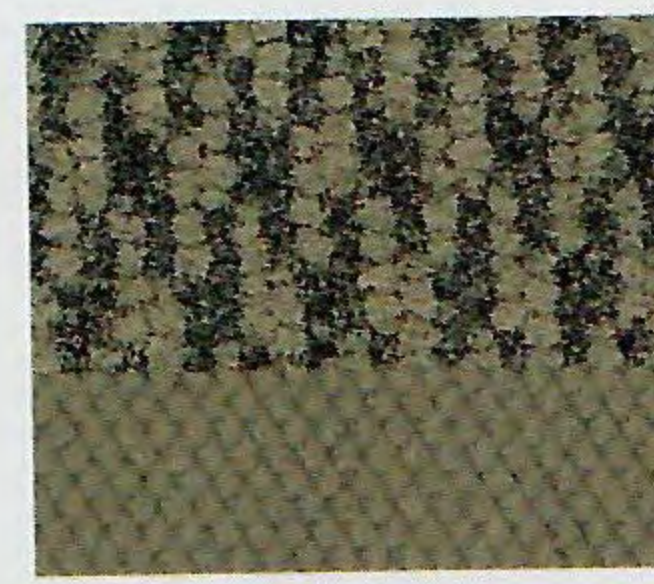
Maximum cargo volume (cu. ft.)	5 pass./7 pass.
With 2nd-row seat upright	46.6/44.0
With rear seats folded	87.8/81.4
With 3rd-row seat upright	— /13.7



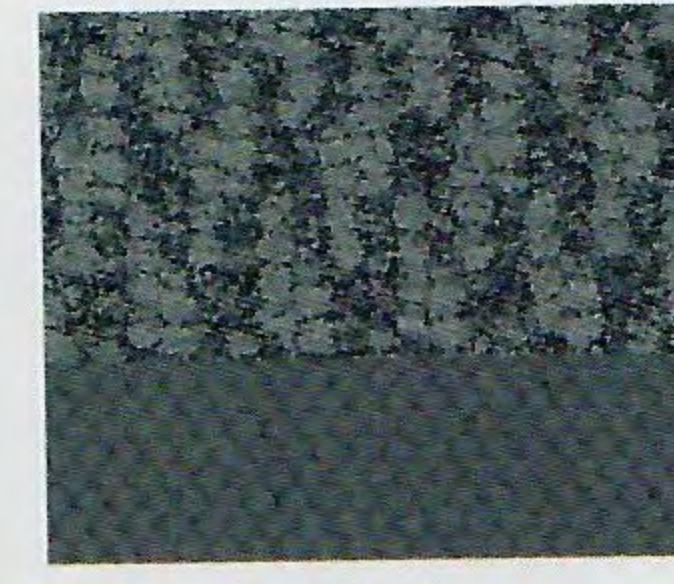
Medium Parchment Cloth
Standard on XLS
and XLS Sport



Graphite Cloth
Standard on XLS
and XLS Sport



Medium Parchment Cloth
Standard on XLT
and XLT Sport



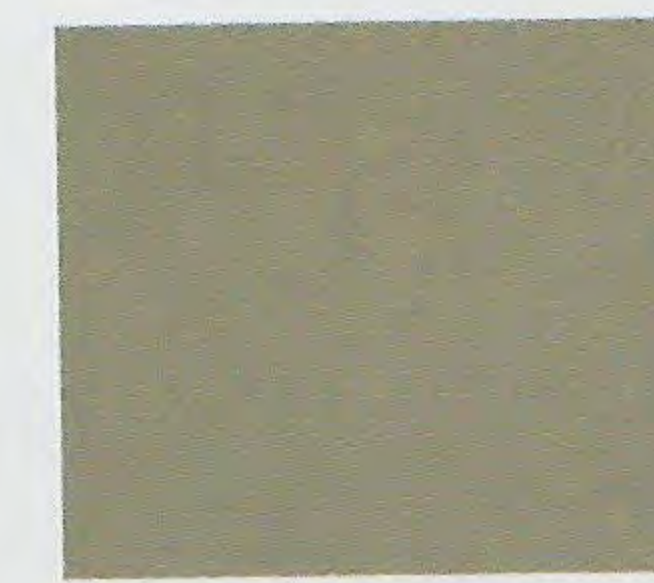
Graphite Cloth
Standard on XLT
and XLT Sport



Medium Parchment Cloth
Standard on
XLT Appearance Package



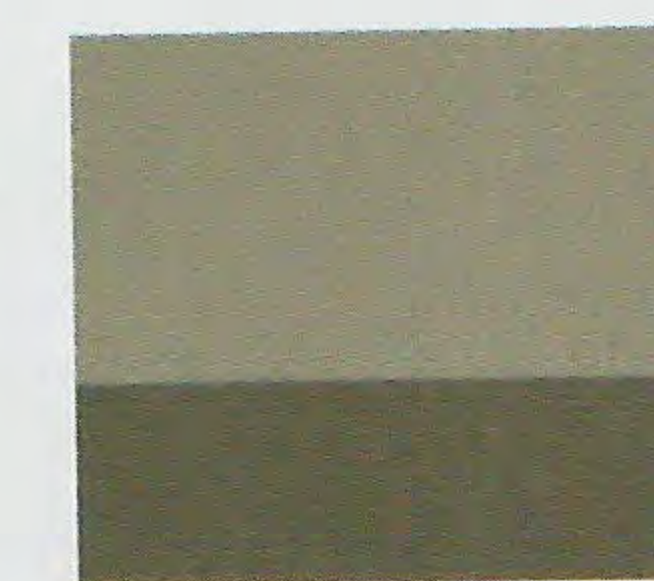
Midnight Grey Cloth
Standard on
XLT Appearance Package



Medium Parchment Leather
Optional on XLT, XLT Sport,
and Limited



Graphite Leather
Optional on XLT
and XLT Sport



Medium Parchment Leather
Standard on Eddie Bauer



Midnight Grey Leather
Standard on Limited

Medium Parchment	
● ●	Graphite
● ●	Midnight Grey
XLS/XLS Sport	
● ●	Oxford White
● ●	Pueblo Gold Metallic
● ●	Redfire Metallic
● ●	Dark Blue Pearl Metallic
● ●	Silver Birch Metallic
● ●	Mineral Grey Metallic
● ●	Dark Stone Metallic*
● ●	Black
XLT/XLT Sport	
● ●	Oxford White
● ●	Pueblo Gold Metallic (XLT only)
● ●	Redfire Metallic
● ●	Medium Wedgewood Blue Metallic (XLT only)
● ●	Dark Blue Pearl Metallic
● ●	Silver Birch Metallic
● ●	Mineral Grey Metallic (XLT only)
● ●	Dark Stone Metallic* (XLT only)
● ●	Black (XLT Sport only)
XLT Appearance Package**	
● ●	Pueblo Gold Metallic
● ●	Redfire Metallic
● ●	Silver Birch Metallic
● ●	Dark Stone Metallic*
● ●	Black
Eddie Bauer	
● ●	Oxford White
● ●	Redfire Metallic
● ●	Medium Wedgewood Blue Metallic
● ●	Dark Blue Pearl Metallic
● ●	Dark Stone Metallic*
● ●	Black
Limited (Monochromatic)	
● ●	Ivory Parchment Tri-Coat Metallic*
● ●	Pueblo Gold Metallic
● ●	Redfire Metallic
● ●	Silver Birch Metallic
● ●	Black

*New for 2005. **Medium Parchment is late availability.

EXTERIOR COLORS



Oxford White



Pueblo Gold Metallic



Redfire Metallic



Medium Wedgewood Blue Metallic



Dark Blue Pearl Metallic



Silver Birch Metallic



Mineral Grey Metallic



Dark Stone Metallic



Black

Ford uses clearcoat paint for beauty and protection. Colors shown are representative only. Not all colors are available on all models. See your dealer for actual paint/trim options.



Ivory Parchment Tri-Coat Metallic

WHEELS



16" Full-Face Steel Wheel
Standard on XLS



16" Painted Cast-Aluminum Wheel
Standard on XLS Sport and XLT



17" Machined-Aluminum Wheel
Standard on XLT Sport



17" Sparkle Silver Aluminum Wheel
Standard on XLT Appearance
Package and Eddie Bauer



17" Chrome-Aluminum Wheel
Standard on Limited



Get the ride you want. Whether you plan to lease or finance, you'll find the choices that are right for you at Ford Credit. Ask your Ford Dealer for details or check us out at fordcredit.com.



For a purchase or lease, the Ford Extended Service Plan (ESP) gives you "Peace-of-Mind" protection designed to cover key vehicle components and protect you from the cost of unexpected repairs. Ask your dealer for an ESP backed by Ford Motor Company and honored at all Ford dealerships.



Choose the insurance program that's designed for your vehicle - Ford Motor Company Insurance Services. Our program helps you receive the rates and service you deserve. Call 1-877-367-3847 or visit us at fordvip.com for a no-obligation quote. Insurance offered by American Road Services Company (in CA, American Road Insurance Agency), a licensed agency and subsidiary of Ford Motor Company.



Ford is working closely with the National Park Foundation to help develop innovative transportation and environmental solutions that enable visitors to enjoy America's National Parks without compromising their beauty.



Ford is a proud Partner in Education and Founding Member of Tread Lightly! Through Education, Restoration and Research, Tread Lightly! empowers generations to enjoy the outdoors responsibly.



AMERICA'S BEST-SELLING SUV, 13 YEARS AND COUNTING
SINCE ITS INCEPTION, OVER 5 MILLION FORD EXPLORERS HAVE BEEN SOLD — THE 1ST AND ONLY SUV TO ACHIEVE SUCH SALES NUMBERS

EDITORS' MOST WANTED 2004 MIDSIZE SUV UNDER \$35,000

— *Edmunds.com*

MOST TRUSTED SUV 12 YEARS RUNNING*

**Based on repurchase numbers among '93-'04 new vehicle buyers.*

©2004 Ford Motor Company 05EXPLRCAT
Litho. in U.S.A. on recycled paper (20% post consumer)

fordvehicles.com