

2018

FLEX



Go Further



DESIGNED TO MOVE YOU.

Style. Space. Smarts. The 2018 Flex moves you in every way that matters. Its progressive design combines clean lines and versatility like no other. Flex offers you spacious seating for up to 7, and convenient technologies¹ that can help in unexpected ways. Your choice of 2 engines can be paired with Intelligent all-wheel drive (AWD)! The standard Safety Canopy[®] System features side-curtain airbags that deploy to cover all 3 rows, plus you can get 2nd-row outboard inflatable safety belts! And the standard rear view camera helps you maneuver with confidence. Strikingly unique. Effortlessly cool. Ford Flex.



READY WITH ASSISTANCE.

Using ultrasonic sensors and sophisticated radar, Flex driver-assist technologies¹ can help you park, avoid collisions and more.

IN TRAFFIC

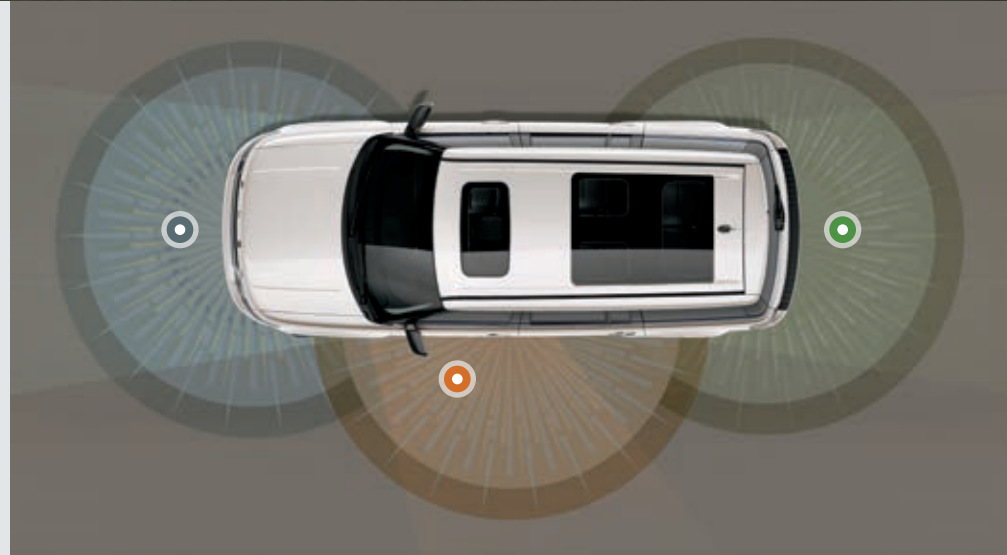
Adaptive cruise control & forward collision warning with brake support¹ can adjust the speed of Flex to maintain a preset gap from the vehicle in front of you. If a potential collision is detected, the system can visually and audibly alert you, and pre-charge the braking system to help provide full responsiveness when you brake.

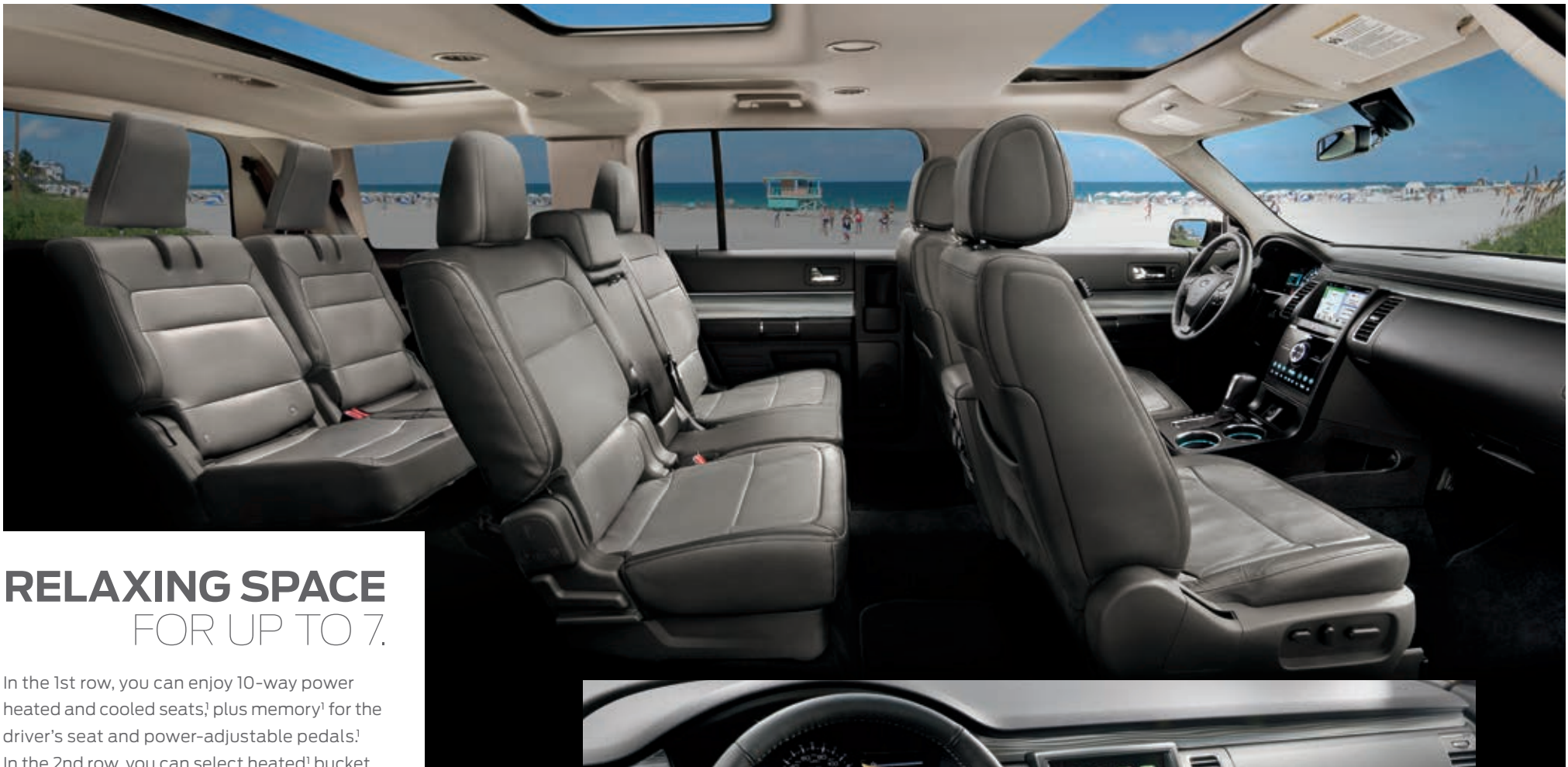
CHANGING LANES

BLIS[®] (Blind Spot Information System) with cross-traffic alert^{1,2} warns you if it detects a vehicle in either of your blind spots while driving forward, or approaching from the sides while in Reverse.

WHEN PARALLEL PARKING

Active park assist¹ not only assists you in finding a spot, it steers Flex into it. You control the gear shifter, brake and accelerator pedals. Let Flex do the rest.





RELAXING SPACE FOR UP TO 7.

In the 1st row, you can enjoy 10-way power heated and cooled seats,¹ plus memory¹ for the driver's seat and power-adjustable pedals.¹ In the 2nd row, you can select heated¹ bucket seats¹ for 2 people, or a bench seat (shown above) for 3 people. Either way, your passengers get best-in-class 2nd-row leg room.² The multipanel Vista Roof^{®1} tops off the experience with amazing views for those in all 3 rows.

In addition to a heated steering wheel,¹ Flex offers MyKey[®] technology that allows you to program ignition keys with reminders to drive at appropriate speeds, keep the audio volume low, and more.





SYNC APPLINK^{®2,5}

Voice control for your favorite compatible mobile apps
Spotify[®] ♦ Alexa ♦ and more



APPLE CARPLAY[™] COMPATIBILITY⁶

Use Siri to connect with your iPhone
Access your favorite songs and playlists in Apple Music[®]
Utilize Apple Maps for voice-guided navigation and estimated travel time



VOICE-ACTIVATED NAVIGATION⁴

Turn-by-turn directions
Vivid 3-D maps
Pinch-to-zoom touchscreen capability



SIRIUSXM[®] TRAFFIC & TRAVEL LINK^{®2}

Complimentary for 5 years
Real-time traffic updates
Fuel station locations and prices
Current and forecasted weather
Movie locations and showtimes
Sports scores



FORDPASS[™] SMARTPHONE APP³

Your personal journey assistant
Find fuel and compare prices
Find, reserve and pay for parking in select locations
Get help from our trained team of Ford Guides – available 24/7



ANDROID AUTO[™] COMPATIBILITY⁶

Talk to Google[™] to interact with your Android[™] smartphone
Access your favorite music through your apps
Utilize Google Maps[™] for voice-guided navigation and estimated travel time

SYNC 3

STAY CONNECTED ON THE MOVE.

Imagine controlling calls, music and more with just a touch and your voice. SYNC[®] 3^{1,2} lets you keep your hands on the wheel while it quickly responds to your spoken requests. Or use the responsive touchscreen in the center of your instrument panel to access its many helpful features. Bring the power of Siri[®] into Flex with Siri Eyes Free and your paired iPhone[®]. The system also features 2 smart-charging USB ports to help keep your devices powered up and ready to go.



CONFIDENT PERFORMANCE.

Flex brings safety and technology together with smart standard features like AdvanceTrac® with RSC® (Roll Stability Control™) and traction control, which provides enhanced stability in a variety of settings. The system selectively applies individual brakes and modifies engine power to help keep all 4 wheels firmly planted.¹ For enhanced handling and maximized traction, Intelligent all-wheel drive (AWD)² balances torque between the front and rear wheels. If you're into camping or boating, Flex can help make the most of your next trip with its 4,500-lb. towing capacity³ and trailer sway control.^{1,2}

For best-in-class V6 horsepower, equip your Flex with the twin-turbocharged, direct-injection, 3.5L EcoBoost® engine.² Paired with Intelligent AWD and steering wheel-mounted paddle shifters, this 365-horsepower⁴ EcoBoost delivers spirited performance.

3.5L ECOBOOST

With its standard 3.5L Ti-VCT V6 engine, Flex has an EPA-estimated rating of 23 hwy mpg.⁵ Twin independent variable camshaft timing helps this V6 produce 287 horsepower. And the 6-speed SelectShift® automatic transmission allows you to shift for yourself, or leave its fully automatic operation to Flex.

3.5L Ti-VCT V6





FLEXIBILITY IN ABUNDANCE.

Wherever your day leads, Flex helps you make all the right moves. Activate its power liftgate¹ with the press of a button on the liftgate handle, on the instrument panel, on the remote control, or inside the rear cargo area. Take advantage of over 83 cu. ft. of cargo space when its 2nd-row and first-in-class PowerFold^{®1} 3rd-row seats are folded flat. Or let passengers pass easily into the 3rd row between the 2nd-row bucket seats.¹



STANDARD FEATURES

Mechanical

4-wheel disc brakes with Anti-Lock Brake System (ABS)

72-amp-hr battery

Battery Management System

Electric power-assisted steering

Front-wheel drive (FWD)

Independent front and rear suspension with stabilizer bars

Driver-Assist Technology

Autolamp automatic on/off headlamps

Reverse Sensing System

SYNC® Voice Recognition Communications and Entertainment System with 4.2" color LCD screen in center stack, 911 Assist®, AppLink®, and 1 smart-charging USB port

Seating

Front bucket seats

2nd-row 60/40 split fold-flat bench seat with autofold function on 40 section

3rd-row manual fold-in-floor 50/50 split bench seat

4-way adjustable front head restraints

Interior

1st-, 2nd- and 3rd-row dome/map lights

1st-row center console with armrest, storage and 2 cupholders

12V powerpoints accessible in all rows (4)

Accessory delay for power features

Auto-dimming rearview mirror

Auxiliary audio input jack

Cabin air filter

Carpeted floor mats in 1st and 2nd rows

Coat hooks in 2nd row (2)

Cruise control

Cupholders (10)

Driver and front-passenger sun visors with illuminated vanity mirrors

Front-passenger (1) and B-pillar (2) grab handles

Grocery bag hooks in cargo area

Illuminated Entry System

Leather-wrapped shifter knob

Leather-wrapped steering wheel with cruise, audio and 5-way controls

Locking glove box

Manual-tilt/-telescoping steering column

Map pockets in 1st-row seat backs

Overhead console with sunglasses holder

Power door locks with autolock

Exterior

Body-color bumpers

Body-color roof

Dual bright exhaust tips

Easy Fuel® capless fuel filler

Heated sideview mirrors

Privacy glass (rear door windows, rear quarter windows and liftgate window)

Rear-window defroster

Speed-sensitive, variable-intermittent windshield wipers with washer; 2-speed rear wiper with washer

Safety & Security

Personal Safety System™ for driver and front passenger includes dual-stage front airbags,¹ safety belt pretensioners, safety belt energy-management retractors, safety belt usage sensors, driver's seat position sensor, crash severity sensor, restraint control module and Front-Passenger Sensing System

Front-seat side airbags¹

Safety Canopy® System with side-curtain airbags¹ and rollover sensor

3-point safety belts for all seating positions

AdvanceTrac® with RSC® (Roll Stability Control™) and traction control

Belt-Minder® front safety belt reminder

Child-safety rear door locks

LATCH – Lower Anchors and Tether Anchors for Children (2 for 2nd row and 1 for 3rd row)

MyKey® technology to help parents encourage responsible driving

Perimeter alarm

Rear view camera

Remote Keyless Entry System with integrated keyhead transmitter remotes (2)

SecuriCode™ invisible keypad

SecuriLock® Passive Anti-Theft System

Side-intrusion door beams

SOS Post-Crash Alert System™

Tire Pressure Monitoring System (excludes spare)

POWERTRAINS/EPA-ESTIMATED RATINGS²

3.5L Ti-VCT V6

287 hp @ 6,500 rpm 254 lb.-ft. of torque @ 4,000 rpm

6-speed SelectShift® automatic with shifter button activation

FWD 16 city/23 hwy/19 combined mpg

AWD 16 city/22 hwy/18 combined mpg

Standard: SE/SEL/Limited

3.5L EcoBoost® V6

365 hp @ 5,500 rpm³ 350 lb.-ft. of torque @ 3,500 rpm³

6-speed SelectShift automatic with steering wheel-mounted paddle shifters

AWD 15 city/21 hwy/17 combined mpg

Optional: Limited

DIMENSIONS

Exterior

Wheelbase 117.9"

Length 201.8"

Height – Excluding options 68.0"

Width – Excluding mirrors 75.9"

Width – Including mirrors 88.8"

Width – Mirrors folded 80.1"

Interior 1st/2nd/3rd Row

Head room 41.8"/40.5"/38.7"

Leg room 42.6" (max.)/44.3"/33.3"

Hip room 55.5"/55.0"/41.1"

Shoulder room 58.4"/58.1"/50.8"

Capacities (cu. ft.)

Passenger volume 155.8

Cargo volume behind 1st row 83.2

Cargo volume behind 2nd row 43.2

Cargo volume behind 3rd row⁴ 20.0

Fuel tank (gal.) 18.6

Max. towing (lbs.)⁵ 4,500

¹Always wear your safety belt and secure children in the rear seat. ²Actual mileage will vary. ³Horsepower and torque ratings achieved with 93-octane fuel. ⁴Includes 5.0-cu.-ft. rear cargo storage well. ⁵Maximum weight shown is for properly equipped vehicle with required equipment and a 150-lb. driver. Weight of additional options, equipment, passengers and cargo must be deducted from this weight. For additional information, see your Ford Dealer.



		LIMITED	
SE	SEL	SE	SEL
	S	S	Mechanical
	O	O	Heavy-duty brake calipers
		O	Intelligent all-wheel drive (AWD)
			Driver-Assist Technology
		P	Active park assist ¹
		P	Adaptive cruise control & forward collision warning with brake support
	P	S	BLIS® (Blind Spot Information System) with cross-traffic alert
		S	Rain-sensing windshield wipers
	S	S	SYNC® 3 with 8" color LCD capacitive touchscreen in center stack, 911 Assist®, AppLink®, Apple CarPlay™ compatibility, Android Auto™ compatibility, and 2 smart-charging USB ports
			Seating
	S		6-way power driver's seat with manual lumbar and recline and 4-way manual front-passenger seat
	S	S	10-way power driver's seat with power lumbar and recline and 6-way power front-passenger seat with manual lumbar and recline
	P	S	Driver's seat memory feature
		S	Heated front seats
		P	Heated and cooled front seats
	O		2nd-row 40/40 bucket seats with manual recline
		O	2nd-row 40/40 heated bucket seats with manual recline
		S	2nd-row fold-down center armrest with 2 cupholders
		P	3rd-row vinyl 50/50 split bench seat with one-touch PowerFold® and tumble with tailgate feature
			Interior
	S	S	AM/FM stereo/single-CD player with MP3 capability and 6 speakers
		S	Audio System from Sony® with AM/FM stereo/single-CD player, MP3 capability, 12 speakers and HD Radio™ Technology
		P	Premium Audio System with 7 speakers
	O	S	SiriusXM® Radio with 6-month All Access trial subscription ²
	O	O	1st- and 2nd-row floor liners
		P	S 110V/150W AC power outlet
			S Ambient lighting
		S	S Cargo net
	S		Climate – Single-zone climate control with manual rear auxiliary; includes 2nd- and 3rd-row adjustable vents
	S	S	Climate – Dual-zone electronic automatic temperature control with manual rear auxiliary; includes 2nd- and 3rd-row adjustable vents

		LIMITED	
SE	SEL	SE	SEL
	S	S	Front door-sill scuff plates – Black
		S	Front door-sill scuff plates – Chrome with aluminum inserts
	S	S	Intelligent Access with push-button start
	P	S	Power-adjustable pedals with memory
	S		Power windows with one-touch-up/-down driver's side feature
		S	S Power windows with front one-touch-up/-down feature
		S	S Remote Start System
		P	P Steering wheel – Color-keyed leather-wrapped with Meteorite Black bezels
		S	Steering wheel – Color-keyed leather-wrapped with wood inlay
		P	Steering wheel – Heated
	S		Trim – Embossed metal instrument panel appliqué
	S		Trim – San Macassar wood-appearance appliqué on instrument panel and door-trim panels
	P	P	Trim – Unique finish instrument panel and door-trim panels
		S	Trim – Yoho maple woodgrain-appearance appliqué on instrument panel and door-trim panels
	S	S	Universal garage door opener
	O	S	Voice-activated Navigation System ³ with pinch-to-zoom capability, and integrated SiriusXM Traffic and Travel Link® with 5-year subscription ²
			Exterior
	S	P	P Beltline moldings – Black
	S	S	Beltline moldings – Bright stainless
	S		Door handles – Body-color
	S	S	Door handles – Chrome
	S	S	Fog lamps with bright bezels
	S	S	Grille – Chrome
		S	Grille – Satin-aluminum upper and Kast Silver lower
		P	Grille – Shadow Black center bar
	S	S	Headlamps – Halogen projector
		S	S Headlamps – High-intensity discharge (HID)
	S	S	Liftgate – Manual
		P	S Liftgate – Power
	S	S	Liftgate – Body-color appliqué
		S	Liftgate – Satin-aluminum appliqué
		P	P Liftgate – Shadow Black appliqué
	S	S	Mirrors – Black, power, heated, manually folding sideview with integrated blind spot mirrors (painted mirrors on SEL)
		S	Mirrors – Body-color, power, heated, power-folding sideview with integrated security approach lamps and memory

		LIMITED	
SE	SEL	SE	SEL
		O	O Moonroof – Multipanel Vista Roof® ³
		P	P Roof – Shadow Black
	O		Roof rack side rails – Black
		P	P Roof rack side rails – Shadow Black
	O	O	Roof rack side rails – Silver
		S	Taillamps – LED
			Safety & Security
	O	O	2nd-row outboard inflatable safety belts ⁴
			Equipment Groups & Packages
		O	Equipment Group 202A: 110V/150W AC power outlet + power liftgate + power-adjustable pedals with memory + BLIS (Blind Spot Information System) with cross-traffic alert + 1st- and 2nd-row leather-trimmed seating with memory driver's seat + sideview mirrors with memory and security approach lamps + Premium Audio System with 7 speakers
		O	Equipment Group 301A: active park assist ¹ + adaptive cruise control & forward collision warning with brake support + 10-way power, heated and cooled front seats + 3rd-row 50/50 split bench with one-touch PowerFold and tumble with tailgate feature + heated steering wheel + power-tilt/-telescoping steering column
		O	Equipment Group 303A: all content of 301A + 3.5L EcoBoost® V6 engine + Intelligent AWD + 20" polished aluminum wheels
		O	Appearance Package: Shadow Black roof, grille center bar, hood badge, liftgate appliqué, and sideview mirror caps; black beltline moldings; 20" high-gloss black-painted aluminum wheels; Dark Earth Gray leather-trimmed seating with Light Earth Gray perforated inserts; leather-wrapped steering wheel with Meteorite Black bezels; unique instrument panel and door-trim appliqué; and 1st-row floor mats with unique logo
		O	Class III Trailer Tow Package: class III hitch receiver with 4,500-lb. rating, 7-/4-pin wiring harness, engine oil cooler and trailer sway control



¹The active park assist activation button replaces one 12V powerpoint. ²After your trial period ends, SiriusXM audio and data services each require a subscription sold separately, or as a package, by Sirius XM Radio Inc. See SiriusXM Customer Agreement for complete terms at www.siriusxm.com. All fees and programming subject to change. Trial subscriptions not available in AK and HI. ³Restrictions may apply. See your dealer for details. ⁴Always wear your safety belt and secure children in the rear seat.

EXTERIORS/INTERIORS/WHEELS

Exterior

	SE	SEL	LIMITED
White Platinum Metallic Tri-coat ¹		3 4 5 6 7	7 8 9
Oxford White	1 2	3 4 5 6 7	7 8 9
Ingot Silver ²	1 2	3 4 5 6 7	7 8 9
White Gold ²		3 4 5 6 7	7 8 9
Ruby Red Metallic Tinted Clearcoat ¹		3 4 5 6 7	7 8 9
Burgundy Velvet Metallic Tinted Clearcoat ¹		3 4 5 6 7	7 8 9
Blue ²	1 2	3 4 5 6 7	7 8 9
Magnetic ²	1 2	3 4 5 6 7	7 8 9
Shadow Black	1 2	3 4 5 6 7	7 8 9

7: Appearance Package



Shadow Black Roof
Included: Appearance Package



White Platinum Metallic Tri-coat



Oxford White



Ingot Silver



White Gold



Ruby Red Metallic Tinted Clearcoat



Burgundy Velvet Metallic Tinted Clearcoat



Blue



Magnetic



Shadow Black



17" Sparkle Silver-Painted Aluminum
Standard: SE



18" Sparkle Silver-Painted Aluminum
Standard: SEL



19" Premium Luster Nickel-Painted Aluminum
Standard: Limited



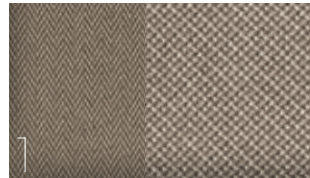
20" Bright-Painted Aluminum
Available: SEL



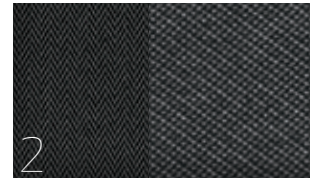
20" Polished Aluminum
Optional: Limited



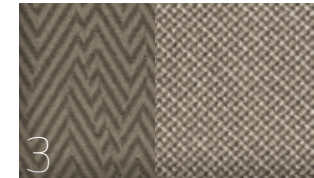
20" High-Gloss Black-Painted Aluminum
Included: Appearance Package



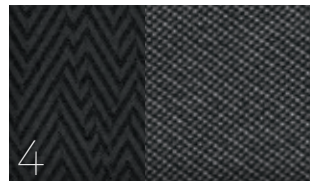
1 Dune Cloth



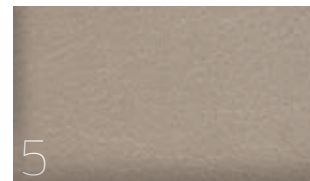
2 Charcoal Black Cloth



3 Dune Cloth



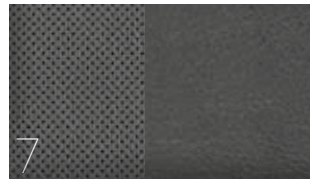
4 Charcoal Black Cloth



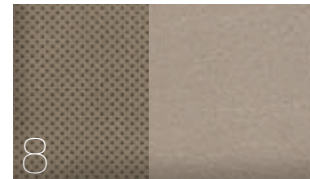
5 Dune Leather



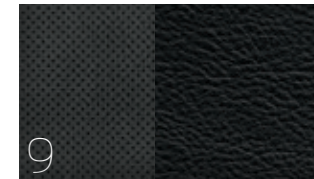
6 Charcoal Black Leather



7 Dark/Light Earth Gray Leather



8 Dune Leather



9 Charcoal Black Leather



FORD ACCESSORIES

SEL in Ruby Red Metallic Tinted Clearcoat accessorized with smoked hood deflector, side window deflectors by EGR; rear spoiler, front molded splash guards, roof side rails, plus roof crossbars and roof-mounted cargo box by THULE^{®1,2}

accessories.ford.com

Exterior

- Full vehicle cover¹
- Hood badge
- Hood deflector
- Locking fuel plug
- Racks and carriers¹
- Rear spoiler (A)
- Roof side rails
- Side window deflectors¹
- Splash guards
- Sportz[®] tent¹
- Trailer towing accessories
- Wheel lock kit

Interior

- Ash cup/coin holders
- Cargo organizers and protectors
- Carpeted floor mats
- Conversation mirror
- Door-sill plates
- First aid and roadside assistance kits¹
- Floor liners (B)
- Interior light kit
- Leather-trimmed interior seating¹
- Protective seat covers¹
- Tablet cradle¹

Electronics

- NextBase[®] Duo Cinema¹
- Rear Seat Entertainment System¹ (C)
- Remote Access (D)
- Remote start systems
- Vehicle Security System
- Warning Sensor System¹

New Vehicle Limited Warranty. We want your Ford Flex ownership experience to be the best it can be. Under this warranty, your new vehicle comes with 3-year/36,000-mile bumper-to-bumper coverage, 5-year/60,000-mile Powertrain Warranty coverage, 5-year/60,000-mile safety restraint coverage, and 5-year/unlimited-mile corrosion (perforation) coverage – all with no deductible. Please ask your Ford Dealer for a copy of this limited warranty.

Roadside Assistance. Covers your vehicle for 5 years or 60,000 miles, so you have the security of knowing that help may be only a phone call away should you run out of fuel, lock yourself out of the vehicle or need towing. Your Ford Dealer can provide complete details on all of these advantages.

Ford Credit. Get the ride you want. Whether you plan to lease or finance, you'll find the choices that are right for you at Ford Credit. Ask your Ford Dealer for details or check us out at fordcredit.com.

Ford Protect Extended Service Plans. Whether you purchase or lease your Ford vehicle, insist on genuine Ford Protect extended service plans. Ford Protect has a variety of plans to give you peace-of-mind protection whether you want vehicle component or maintenance coverage. Plus, they are fully backed by Ford and honored at all Ford dealerships in the U.S., Canada and Mexico. When you visit your dealer, insist on genuine Ford Protect extended service plans.

Insurance Services. Get Ford Motor Company quality in your auto insurance. Our program offers industry-leading benefits and competitive rates. Call 1-877-367-3847, or visit us at fordvip.com for a no-obligation quote. Insurance offered by American Road Services Company (in CA, American Road Insurance Agency), a licensed agency and subsidiary of Ford Motor Company.

Ford Original Accessories. They're warranted for whichever provides you the greatest benefit: 24 months/unlimited mileage, or the remainder of your Bumper-to-Bumper 3-year/36,000-mile New Vehicle Limited Warranty. Ford Licensed Accessories (FLA) are warranted by the accessory manufacturer's warranty. FLA are designed and developed by the accessory manufacturer and have not been designed or tested to Ford Motor Company engineering requirements. Contact your Ford Dealer for details and/or a copy of all limited warranties.

Alexa, Android, Android Auto, Google, Google Maps and Google Play are trademarks of Google Inc. Apple, Apple CarPlay, Apple Music, iPhone and Siri are trademarks of Apple Inc., registered in the U.S. and other countries. "HD Radio" and the HD Radio logo are proprietary trademarks of iBiquity Digital Corporation. Sirius, XM and all related marks and logos are trademarks of Sirius XM Radio Inc. Sony is a registered trademark of the Sony Corporation. Spotify is a registered trademark of Spotify AB, Sweden. THULE is a registered trademark of Thule Sweden AB.

Comparisons based on competitive models (class is Large Utilities based on Ford segmentation), publicly available information and Ford certification data at time of printing. Vehicles may be shown with optional equipment. Features may be offered only in combination with other options or subject to additional ordering requirements/limitations. Dimensions shown may vary due to optional features and/or production variability. Information is provided on an "as is" basis and could include technical, typographical or other errors. Ford makes no warranties, representations, or guarantees of any kind, express or implied, including but not limited to, accuracy, currency, or completeness, the operation of the information, materials, content, availability, and products. Ford reserves the right to change product specifications, pricing and equipment at any time without incurring obligations. Your Ford Dealer is the best source of the most up-to-date information on Ford vehicles.

¹Ford Licensed Accessory. ²Consult owner's manual for details on roof-rack load limits.