

# FOCUS



2000 FOCUS







**Ever eavesdrop? These guys do it at the drop**

of a hat. Here's how it works: They act like they're talking. Except they're really just saying "rhubarb" over and over, like the overworked, underpaid model citizens that they are.

**The moral of the story?** Well, there isn't one. They make their choices. Get their kicks. And they don't spend a whole lot of time looking back.

**Lucy H.:** Art Director. One dog, "Horace." Traded smoking for yoga.

Motto: "Shake it 'til it falls off. Then keep shakin' it."

**Ben "Schwee":** Self-employed (don't ask). Former walk-on point guard. Huge Robert Mitchum fan. Blow-dries.

**Maggie:** DOB 3/12/73. Pastry chef. On and off with Ben. Lives for foosball and marzipan. Guilty pleasure: Wang Chung.

**Kelly "The Blowtorch":** Cast-iron furniture maker. 5'1". Afraid of elevators and recliners. Can bench-press her own weight.



Kelly "The Blowtorch"



Maggie



Ben "Schwee"



Lucy H.



Lucy took a  
lot of factors into  
account. Like

which Focus  
would look best  
leaving Austin

on Friday  
afternoons.

Focus comes  
in three trims.

One for  
just about  
any occasion.

Like blowing  
outta town.

## 3-door

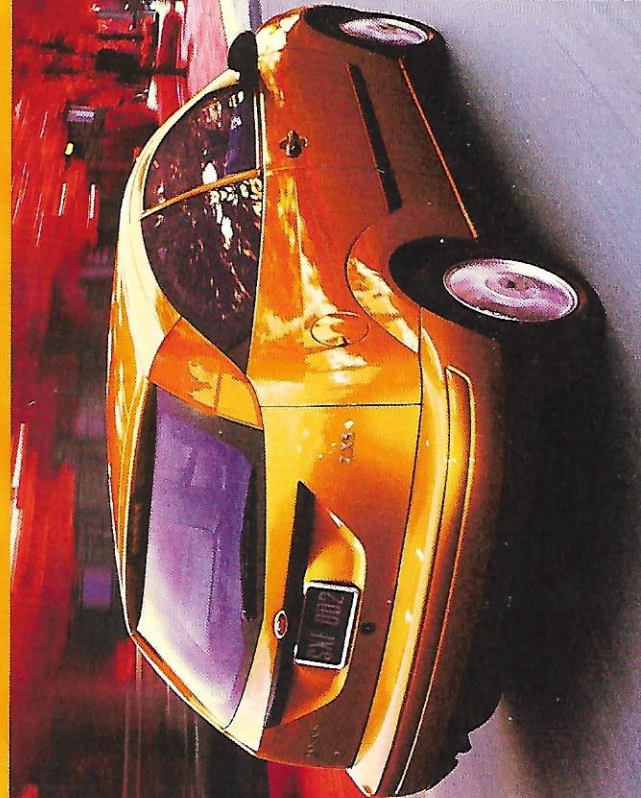
- 15" five-spoke aluminum wheels
- AM/FM stereo/single CD
- manual seat height adjuster
- integrated fog lamps
- tachometer
- four-wheel ABS (opt.)
- all-door remote keyless entry (opt.)
- leather-wrapped steering wheel
- air (opt.)
- side-impact airbags (opt.)
- SecuriLock™ Passive Anti-Theft System

## sedan

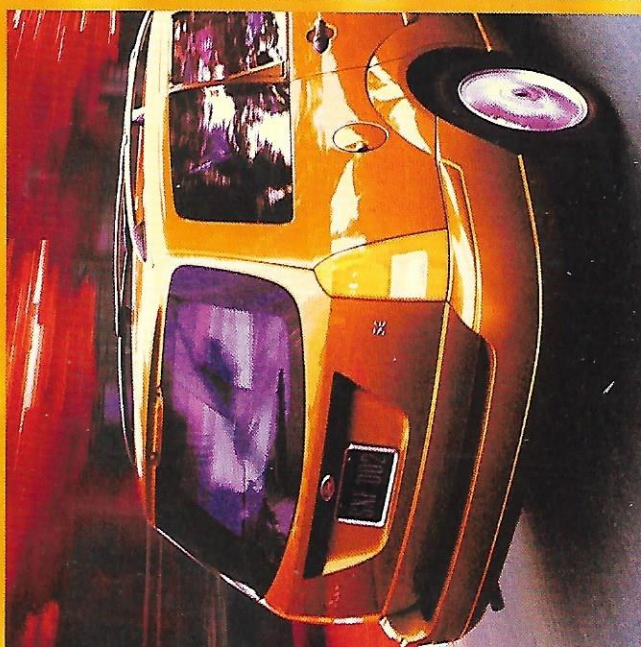
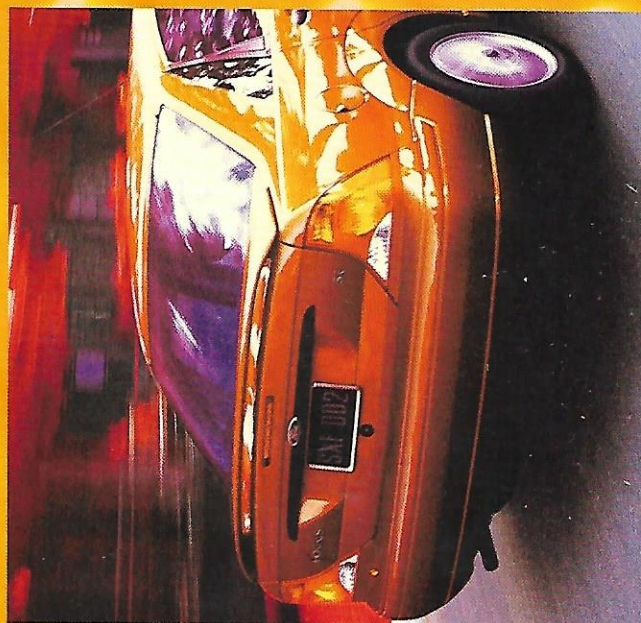
- 15" five-spoke aluminum wheels (opt. lx; std. se)
- 15" multi-spoke aluminum wheels (std. zts)
- rear spoiler (se sport group)
- AM/FM stereo/single CD (opt. lx, se; std. zts)
- manual seat height adjuster
- four-wheel ABS, (opt.)
- leather-wrapped steering wheel (std. zts)
- side-impact airbags (opt.)
- SecuriLock™ Passive Anti-Theft System
- tilt/telescoping steering wheel (std. zts, se comfort group)

## wagon

- 15" five-spoke aluminum wheels
- AM/FM stereo/single CD (opt.)
- manual seat height adjuster
- tilt/telescoping steering wheel (se comfort group)
- cargo cover
- four-wheel ABS (opt.)
- air
- side-impact airbags (opt.)
- SecuriLock™ Passive Anti-Theft System
- luggage rack
- rear window wiper/washer

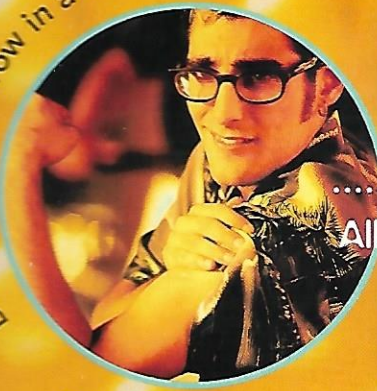


Note: Colors in these photos are altered by infrared photography. It's an artsy



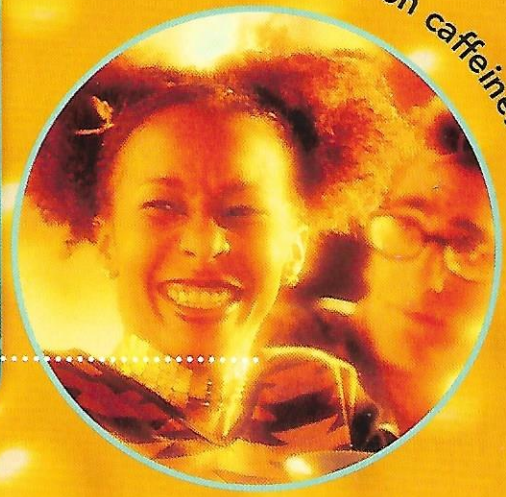


Ben x 60. And throw in a vitamin outlet.

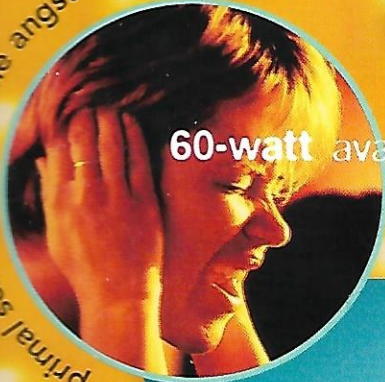


All-new rigid platform. Tight. Available 130-horsepower multi-valve Zetec engine. Responsive.

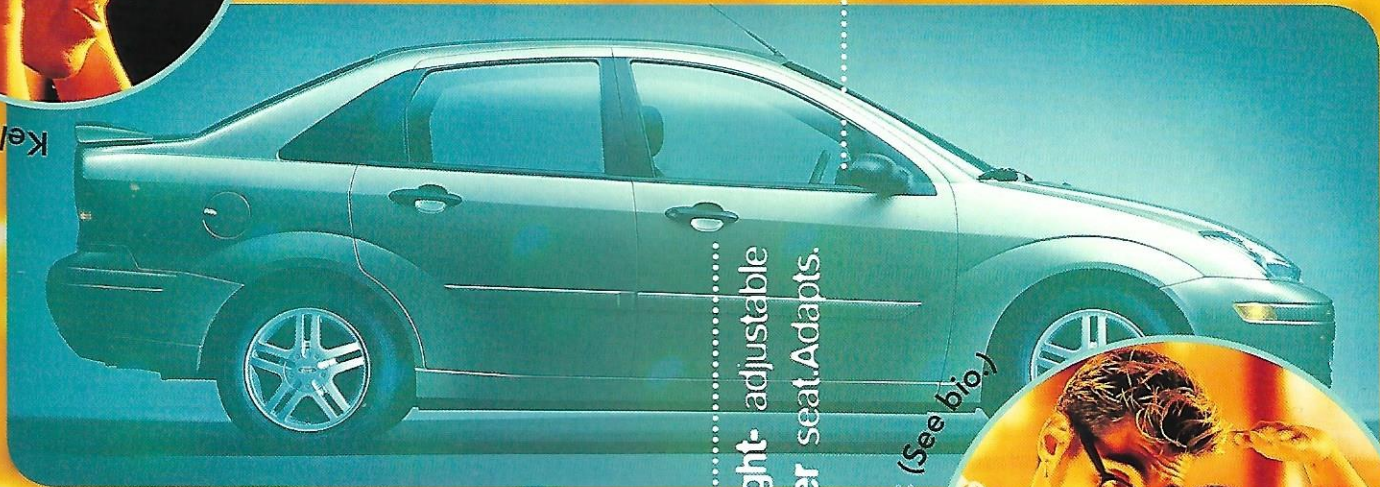
Lucy's brain on caffeine.



Kelly's primal scream. Minus the angst.



60-watt available CD player. Hi-fidelity

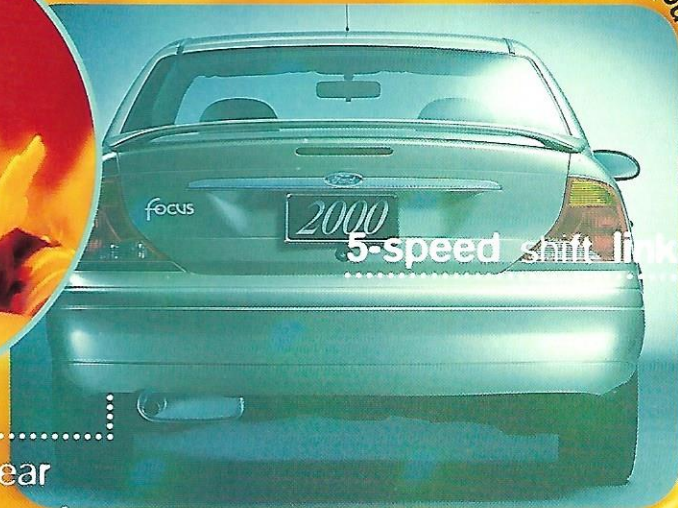


Height-adjustable driver seat. Adapts.

Ben (6'3") pretending he's Kelly. (See bio.)



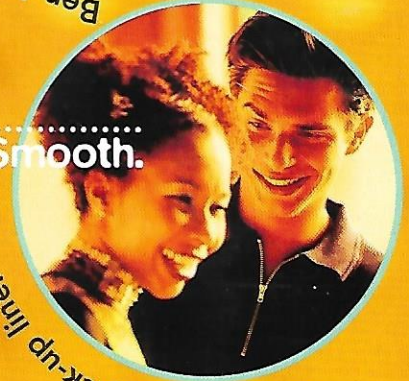
Barista Bob's a.m. Tai Chi.



5-speed shift linkage.

Independent rear suspension. Reacts.

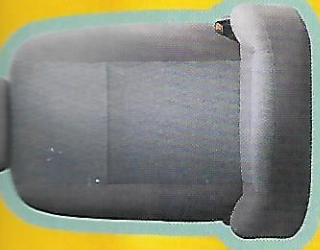
Smooth.



Barista Bob's pick-up line.



Focus bucket seats available in sport cloth or leather trim. And if you own one, you never have to call it.



These seats are very comfy. But don't take Ben's word for it. (He's never called shotgun.)



Exterior Features	Sedan				Wagon
	ZX3	LX	SE	ZTS	SE
Dual manual remote mirrors	●	●	-	-	-
Engine block heater	●	●	●	●	●
License plate brackets, front	-	●	●	●	●
Variable interval wipers	-	-	●	●	●
Fixed interval wipers	●	●	-	-	-
Luggage rack	-	-	-	-	●
Rear window wiper/washer	●	-	-	-	●
Rear window defroster	●	●	●	●	●
Integrated fog lamps	●	-	-	-	-

Interior Features	ZX3	LX	SE	ZTS	SE
Floor mats, front & rear	●	●	●	●	●
Driver/passenger visor mirror	●	●	●	●	●
Interior trunk release (tailgate release on wagon)	●	●	●	●	●
Manual seat height adjuster	●	●	●	●	●
Smoker's Package	●	●	●	●	●
Air conditioning	●	●	●	●	●
Cargo area cover	-	-	-	-	●
Leather-wrapped steering wheel	●	-	-	●	-
Power windows	●*	-	●	●	●
Power mirrors	●*	-	●	●	●
Tachometer	●	-	●	●	-

Safety and Security	ZX3	LX	SE	ZTS	SE
SecuriLock™ Passive Anti-Theft System	●	●	●	●	●
Anti-lock brakes	●	●	●	●	●
Side-impact airbags	●	●	●	●	●
All-door remote entry & power locks	●	●	●	●	●

Option Groups	ZX3	LX	SE	ZTS	SE
<b>SE Comfort Group</b> includes: tilt/telescoping steering wheel; speed control; driver armrest with storage; map light	-	-	●	●	●

<b>SE Sport Group</b> includes: 2.0L Zetec 5-speed manual; rear spoiler; integrated fog lamps; tachometer	-	-	●	-	-
--	---	---	---	---	---

\*Available February, 2000.

Powertrains	Sedan				Wagon
	ZX3	LX	SE	ZTS	SE
2.0L SPI 5-speed manual	-	●	●	-	-
2.0L SPI 4-speed automatic	-	●	●	-	●
2.0L Zetec 5-speed manual (included with Sport Group)	●	-	●	●	-
2.0L Zetec 4-speed automatic	●	-	●	●	●
California emissions	●	●	●	●	●

Tires/Wheels	ZX3	LX	SE	ZTS	SE
P185/65R14 tires	-	●	-	-	-
P195/60R15 tires	●	●	●	●	●
14" bolt-on wheel covers	-	●	-	-	-
15" aluminum 5-spoke wheels (includes P195/60R15 tires)	●	●	●	-	●
15" aluminum wheels (multi-spoke; unique to ZTS)	-	-	-	●	-

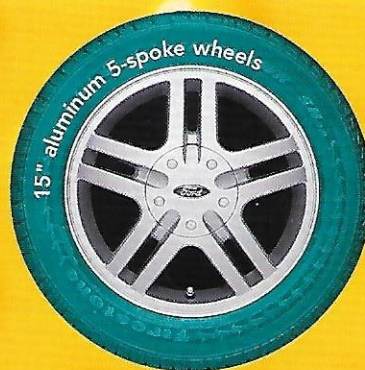
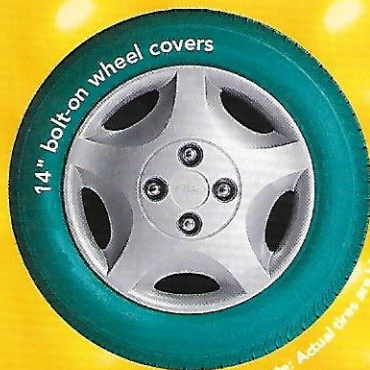
Seats	ZX3	LX	SE	ZTS	SE
Cloth low-back buckets	-	●	●	-	●
Unique cloth low-back buckets with map pockets	-	-	-	●	-
Unique leather-trimmed low- back buckets with map pockets	-	-	-	●	-
Sport cloth bucket seating	●	-	-	-	-
5-passenger seating with center console	●	●	●	●	●
60/40 split/fold rear seat	●	●	●	●	●

Audio	ZX3	LX	SE	ZTS	SE
AM/FM stereo/cassette	●	●	●	-	●
AM/FM stereo/single disc CD	●	●	●	●	●

standard ● optional ●

#### Product Changes and Options Availability

Don't worry. We aren't planning to build a convertible this year. Anyway, following publication of this catalog, certain changes in standard equipment, options, prices and the like, or product delays, may have occurred which would not be included in these pages. Your Ford Dealer is the best place for up-to-date information. Ford Division reserves the right to change product specifications at any time without incurring obligations. Options shown or described are available at extra cost and may be offered only in combination with other options or subject to additional ordering requirements or limitations.



Note: Actual tires are black.





**"To go."** These two words along with the invention of the cupholder. What **would life be like without** them? Would Ben still spill all over the back seat? Would Maggie roll her eyes? Would Kelly have a place to put **Bob's** phone number? And would Lucy forget she **put her cup on the roof** of the car? **Probably.** But the thing with Lucy's car is that it's big enough to contain all this trouble comfortably. So the rest of the world can go safely about its business.

A bigger interior than any of the top sellers in its class • Front and optional side airbags\* • Available ABS • Edge design inside and out • Smartly placed instruments and controls

secure children in the rear seat.

\*Always wear your safety belt and



















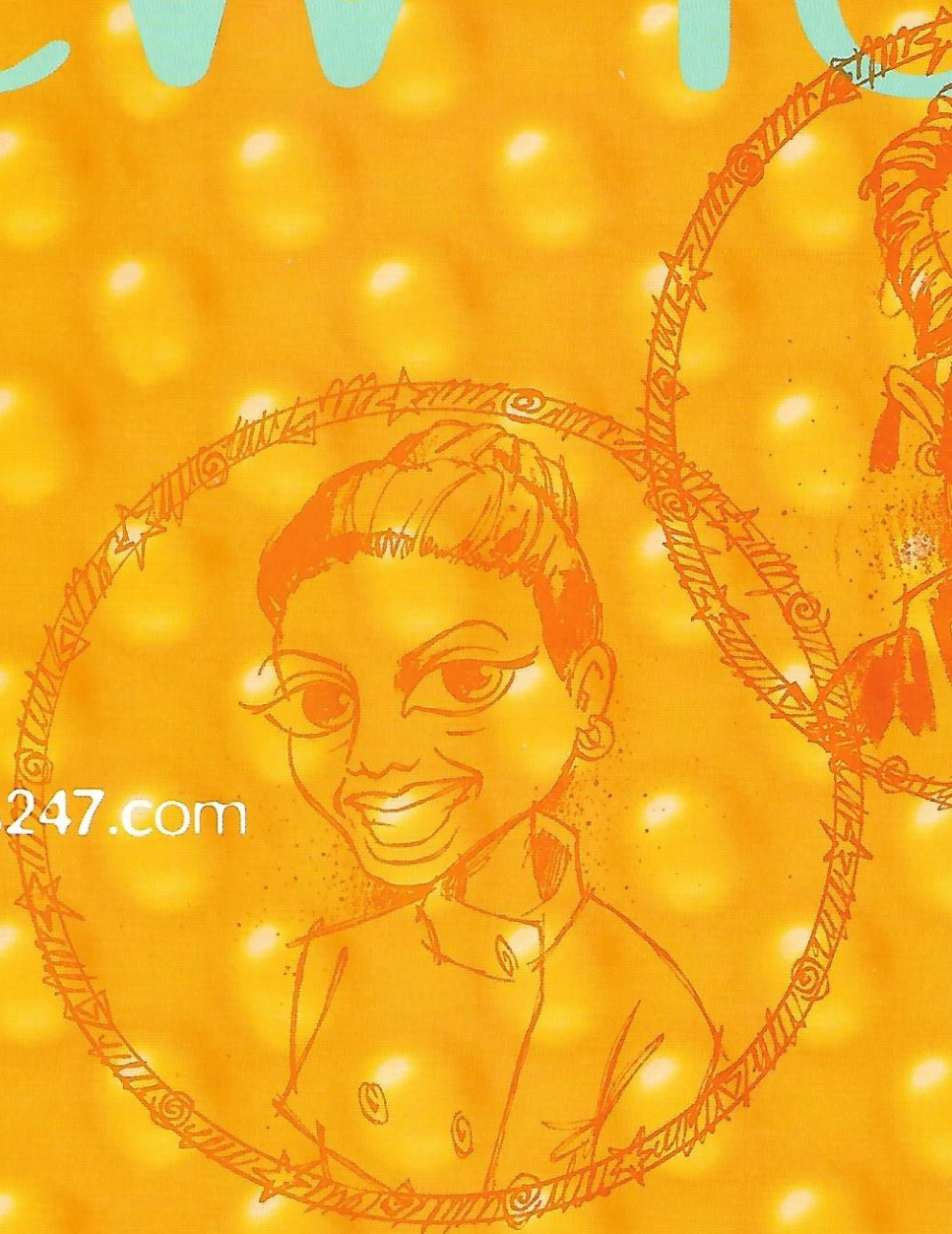






# new fo

visit [focus247.com](http://focus247.com)



focus





cus

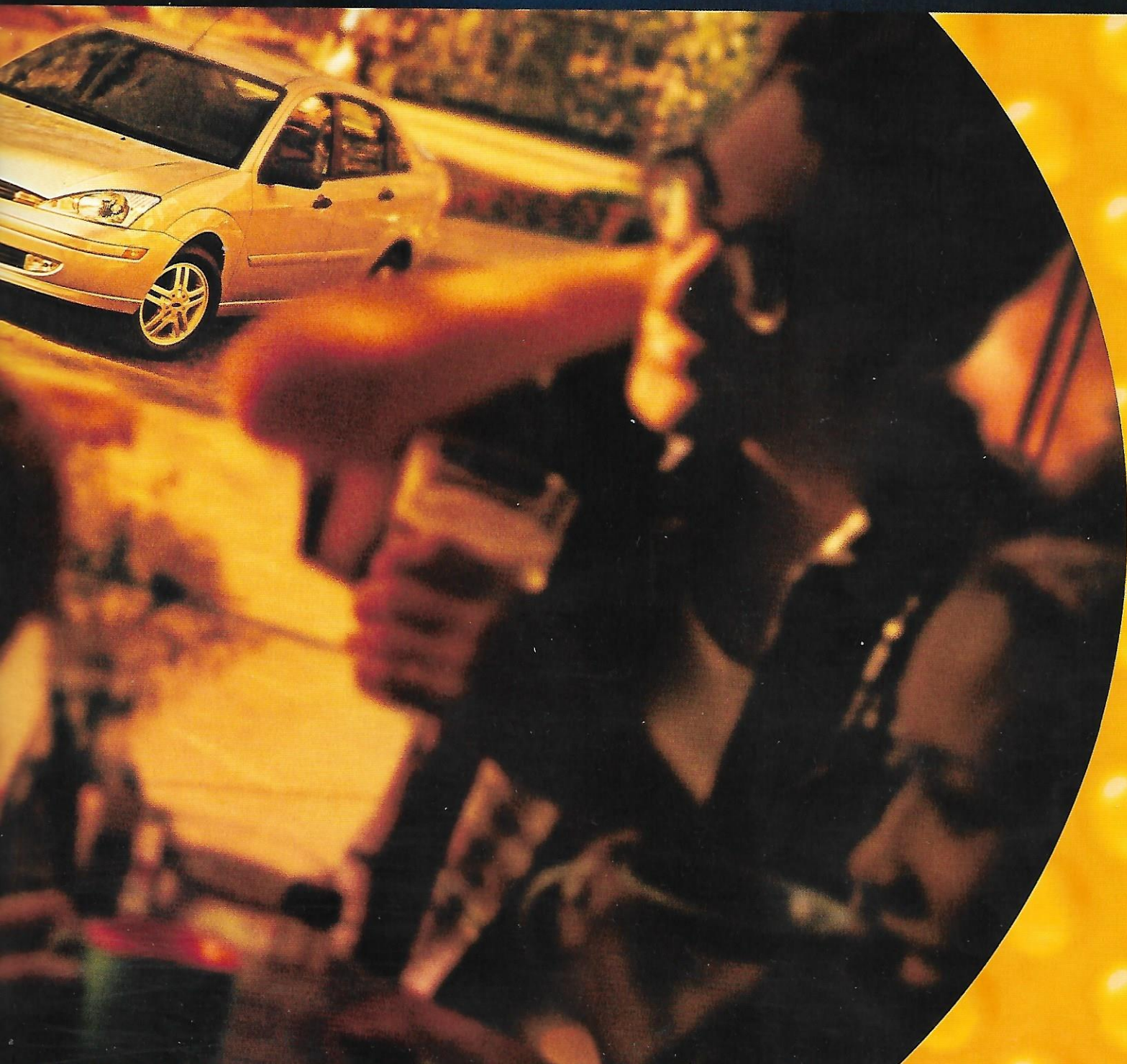






Lucy, Ben, Maggie and Kelly proving a lull in conversation does, in fact, occur every 20 minutes.







**Charcoal Interior, Exterior: Fort Knox Gold Clearcoat Metallic, Autumn Orange Clearcoat Metallic, Infra-Red Clearcoat, Sangria Red Clearcoat Metallic, Atlantic Blue Clearcoat Metallic, Light Sapphire Blue Clearcoat Metallic, Rainforest Green Clearcoat Metallic, CD Silver Clearcoat Metallic,\* Pitch Black Clearcoat, Cloud 9 White Clearcoat**

\*Medium Graphite and Dark Charcoal only.

**Interior: Exterior: Autumn Orange Clearcoat Metallic, Infra-Red Clearcoat, Sangria Red Clearcoat Metallic, Twilight Blue Clearcoat Metallic, Malibu Blue Clearcoat Metallic, Rainforest Green Clearcoat Metallic, CD Silver Clearcoat Metallic, Pitch Black Clearcoat, Cloud 9 White Clearcoat**



cloud 9 white  
(zx3, lx, se, zts)

sangria red  
(zx3, lx, se, zts)

twilight blue  
(zx3)

rainforest green  
(zx3, lx, se, zts)

fort knox gold  
(lx, se, zts)

light sapphire blue  
(lx, se, zts)

infra-red  
(zx3, lx, se, zts)

cd silver  
(zx3, lx, se, zts)

autumn orange  
(zx3, lx, se, zts)

atlantic blue  
(lx, se, zts)

pitch black  
(zx3, lx, se, zts)

malibu blue  
(zx3)



**Roadside Assistance:** Your new Focus includes a 24-hour emergency Roadside Assistance Program provided during the 3-year/36,000-mile limited warranty period. This means gas delivery, tire change, jump start, and even help when you're locked out of your car. Sounds a lot like a road trip guardian angel, doesn't it? Ask your Ford Dealer for more info. **Limited Warranty:** Under the New Vehicle Limited Warranty, you get bumper-to-bumper coverage for 3 years/36,000 miles with no deductible. You also get corrosion perforation coverage for five years with unlimited mileage and no deductible. Questions? Your Ford Dealer has a copy of the warranty. And some helpful answers. [www.fordvehicles.com/focus](http://www.fordvehicles.com/focus)



Bettering the communities in which we do business is the goal of the Ford Force. We're organized, mobilized and coming to a community near you. Join us. **COMMUNITY ACTION TEAM**

FOCUS

