

FUSION+HYBRID



2010



FUSION+HYBRID  2010

The New 2010 FUSION

GETS UP TO
34
MPG HWY.



The All-New
FUSION HYBRID

GETS UP TO
41
MPG CITY

The Most Fuel-Efficient

MIDSIZE SEDAN IN AMERICA.*

*EPA-estimated 23 mpg city/34 hwy., combined 27 mpg, Fusion S I-4 automatic; 41 mpg city/36 hwy., Fusion Hybrid. Actual mileage will vary. Midsize class per R. L. Polk.

fordvehicles.com

FUSION+HYBRID  2010

SIMPLY

a Blast

TO DRIVE.



| Fusion SEL in Sangria Red Metallic with available equipment |

SIZZLING 6-SPEEDS.

Manual or automatic – it's time to shift your state of mind. Take the new 6-speed manual for a spirited drive. Pair the smooth-shifting 6-speed automatic with the 2.5L I-4 engine for max mileage. Or let the new 6-speed SelectShift Automatic™ choose the optimal gear for any situation – while giving you the power to shift for yourself whenever you want. It's the best of both worlds.

ALL THE RIGHT MOVES.

The choice is yours. Get up to a best-in-class¹ 34 mpg hwy. with the new 2.5L I-4 engine and automatic transmission on Fusion S. Keep your refueling options open with the available 240-hp 3.0L V6 Flex Fuel engine (runs on E85, gasoline or any

blend of the 2). Or blast off in Fusion Sport with its new 263-hp 3.5L V6 supplying 249 lb.-ft. of torque for a road-grabbing, heart-pounding good time. Thinking hybrid power is more your style? Go green with the fun-loving Fusion Hybrid.

TIGHT RIDE. SERIOUS TRACTION.

Every Fusion starts with an independent double-wishbone suspension up front and a multilink twist-blade setup in back. AdvanceTrac® electronic stability control (ESC) is also standard. Combine it with available All-Wheel Drive and Fusion keeps moving – through the nastiest of challenges – even if only one wheel has traction. You'll be there in time to get the party started. No worries.

¹EPA-estimated 23 mpg city/34 hwy., combined 27 mpg, Fusion S I-4 automatic; 41 mpg city/36 hwy., Fusion Hybrid. Actual mileage will vary. Midsize class per R. L. Polk.

fordvehicles.com

Travels Over

700 City Miles

ON A SINGLE TANK.¹



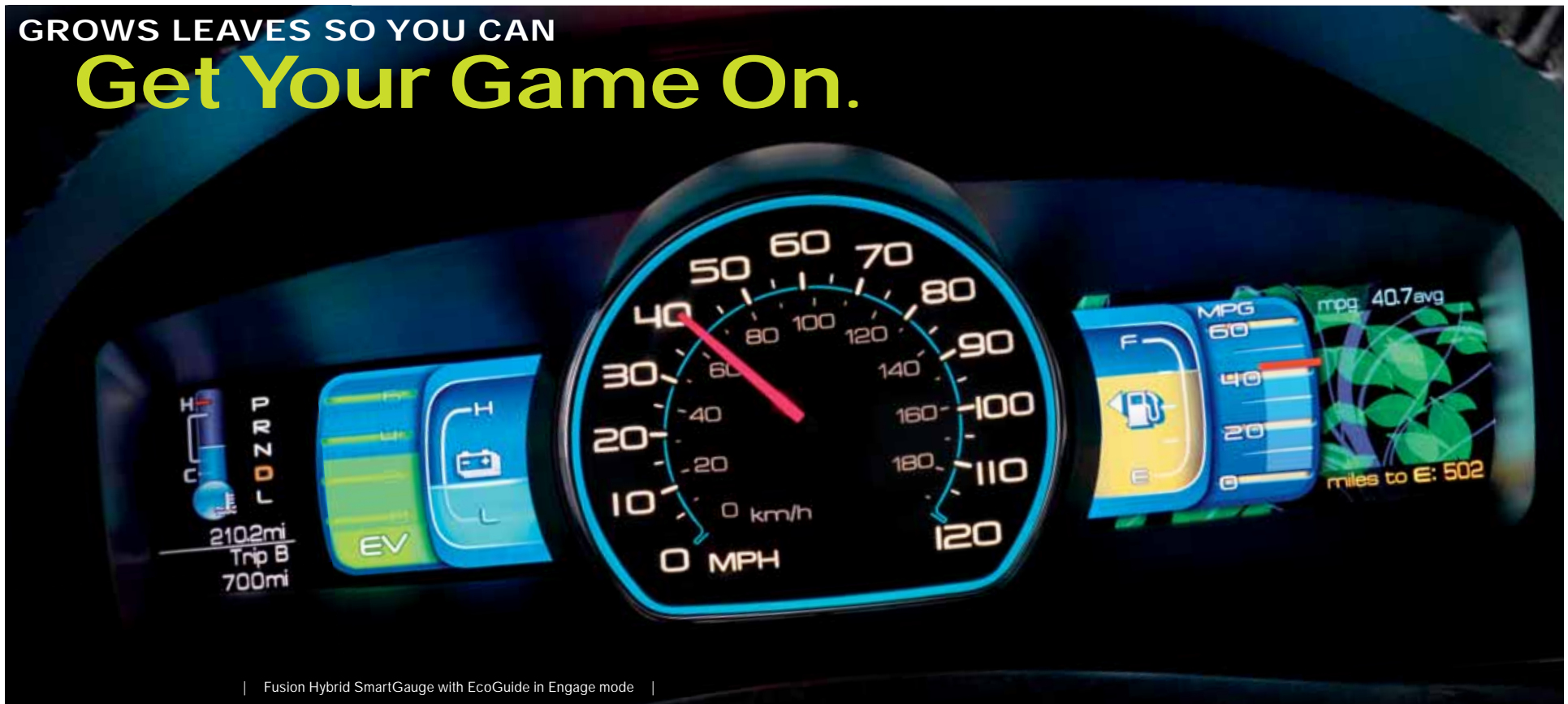
| Fusion Hybrid in Light Ice Blue Metallic |

The all-new Fusion Hybrid really gets up and goes. And it does it ultra-efficiently by operating at speeds of up to **47 MPH IN PURE ELECTRIC MODE** – that's more than any other hybrid on the planet. Beyond 47 mph, the system engages its new 2.5L I-4 Atkinson-cycle engine to work with the electric traction motor, the electronically controlled Continuously Variable Transmission, and the 275-volt sealed nickel-metal-hydrate (NiMH) battery pack, powering Fusion Hybrid

with up to **191 NET HP**. Regenerative Braking helps keep the battery pack charged. Inside, our exclusive sustainable cloth-trimmed seats are created with the help of **85% POST-INDUSTRIAL RECYCLED MATERIALS**. Plus, Fusion Hybrid meets California's strict Advanced Technology Partial Zero Emissions Vehicle (AT-PZEV) requirements.² So you can breathe easy while getting up to **41 MPG** in the city. Drive on.

¹Based on EPA-estimated 41 mpg city, 17.5-gallon tank. Actual mileage will vary. ²AT-PZEV is a rating approved by the California Air Resources Board. Vehicles sold in federally regulated states meet the Environmental Protection Agency's Tier 2/Bin (3) emissions standards.

GROWS LEAVES SO YOU CAN
Get Your Game On.



| Fusion Hybrid SmartGauge with EcoGuide in Engage mode |

4 DISPLAY MODES EVOLVE WITH YOU.

Our exclusive new SmartGauge™ with EcoGuide features 2 dramatic 4.3" LCD screens flanking the luminous speedometer in Fusion Hybrid. Choose your level of info by setting the display to "Inform," "Enlighten," "Engage" or "Empower" yourself. Steering wheel-mounted controls make it easy to explore and change up.

EFFICIENCY FOREST REWARDS YOU.

Fusion Hybrid is the first in its class¹ to grow leaves. Drive efficiently: watch your forest grow. Stomp on the gas: see it fade. More leaves = more mpg. This green motivator inspires during any of the 4 display modes.

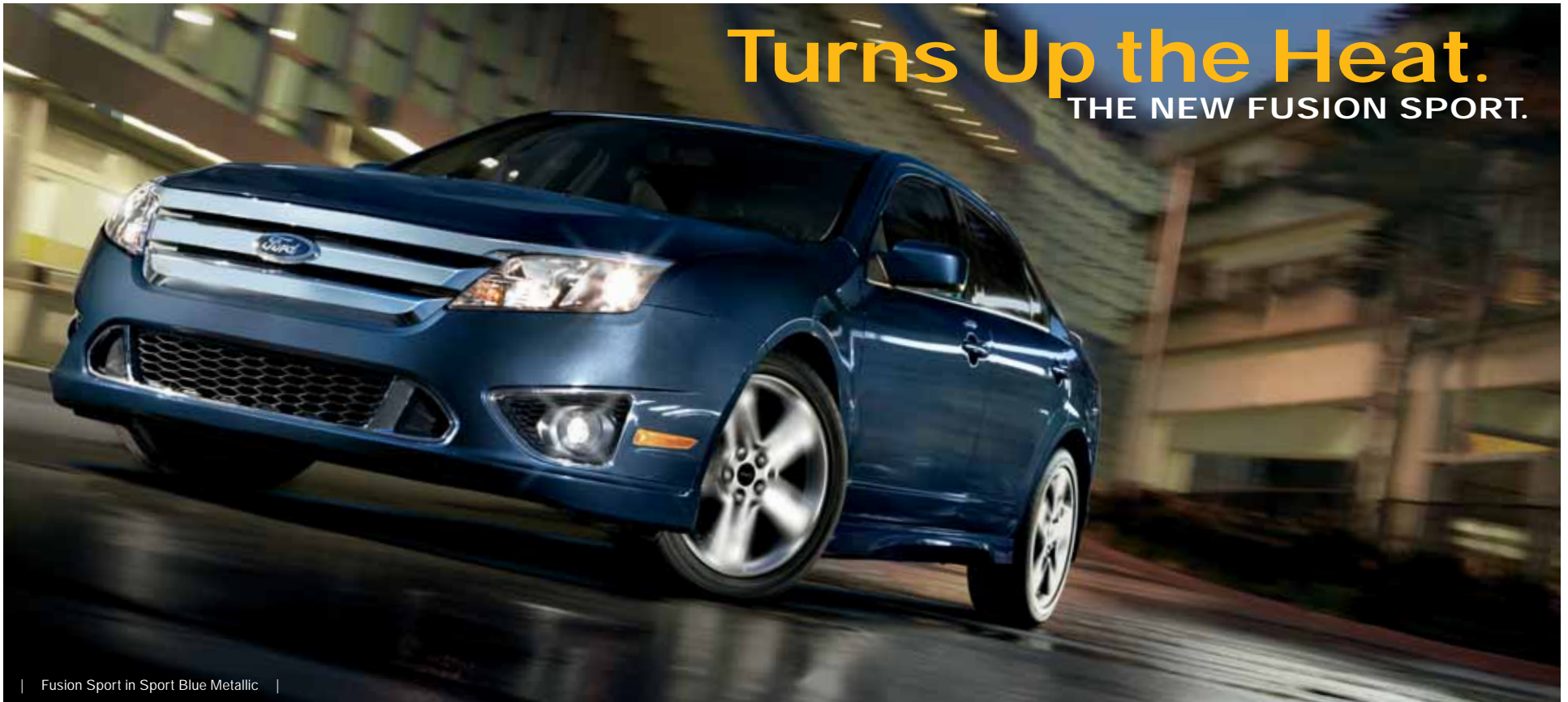
CUSTOMIZABLE GAUGES INFORM YOU.

A built-in tutorial takes you through the 4 display modes, explaining your options within each. Set your efficiency gauge style, choice of 3 languages, units of measurement and more.

¹Midsized Sedan class.

Turns Up the Heat.

THE NEW FUSION SPORT.



| Fusion Sport in Sport Blue Metallic |

Get ready to throw down with **263 HP**. Fusion Sport backs its bold attitude with an intense new 3.5L V6 engine and our smart new 6-speed **SELECTSHIFT AUTOMATIC™** transmission. With SelectShift, you can fly through the gears yourself, or leave the fun to Fusion. The taut ride, sharp cornering and road-grabbing skills are courtesy of its modified **SPORT-TUNED SUSPENSION**. All-season tires and muscular **18" WHEELS** transfer power to the pavement. And the **ATHLETE'S STANCE**? No training required. Every Sport hits the street with aggressive front-end styling, sweet rocker moldings, gleaming chrome accents, dual chrome exhaust tips, and a sporty decklid spoiler. Inside, you'll find dynamic leather-

trimmed seats with 8-way power for the driver. Colorful accents or sleek monotone with contrast stitching; it's up to you. There are no wrong turns in Fusion Sport.



| Fusion Sport in Charcoal Black with Sport Blue inserts and available equipment |

SYNC
Powered by **Microsoft**

YOU TALK.
SYNC
LISTENS.™

VIBRANT SCREEN
WOWS
ALL AROUND.

**NAVIGATION WITH SIRIUS TRAVEL LINK.™
VOICE-ACTIVATED EASE.**

Displayed on a massive 8" LCD touch screen, the available new Navigation System features easy voice activation for everything from driving directions to accessing tunes. It also provides nearly 10 gigabytes of storage space for photos and music (up to 2400 songs). Class-exclusive SIRIUS Travel Link keeps you in the know with up-to-the-minute local traffic, weather, fuel prices, sports and movie listings.¹ All at your fingertips.

**SIRIUS® SATELLITE RADIO.
130+ COAST-TO-COAST CHANNELS.**

Standard on Fusion SE, SEL, Sport and Hybrid, SIRIUS Satellite Radio² comes with a 6-month subscription to get you started surfing over 130 channels of sports, news, entertainment and 100% commercial-free music, coast-to-coast.



**FORD SYNC® WITH 911 ASSIST.™ PLUS, NEW TRAFFIC,
DIRECTIONS AND INFORMATION.**

Our available Ford SYNC system, developed in association with Microsoft,[®] works with your paired Bluetooth[®]-enabled mobile phone and your digital media player or thumb drive to make calls, play music and more – all with the touch of a button or a simple voice command.³

The latest version of SYNC also features these convenient Driver Services:

- 911 Assist • Vehicle Health Reports • Up-to-the-minute weather⁴
- Traffic alerts⁴ • Turn-by-turn directions⁴ • Business searches⁴
- Personalized business, sports and entertainment news, and more⁴

With 911 Assist, the system can make an emergency call from your phone if any airbag has deployed.⁵ And, unlike other systems that send you to a call center first, SYNC connects you directly to a 911 operator. For all the latest details, visit SyncMyRide.com.

¹Midsized Sedan class. Real-time traffic monitoring available in select markets. Not available in Alaska or Hawaii. Some features are unavailable while driving. ²SIRIUS, the SIRIUS dog logo and related marks are trademarks of SIRIUS Satellite Radio Inc. ³Service not available in Alaska or Hawaii. ⁴Driving while distracted can result in loss of vehicle control. Only use mobile phones and other devices, even with voice commands, when it is safe to do so. Microsoft is a registered trademark of Microsoft Corporation. The Bluetooth word mark is a trademark of the Bluetooth SIG, Inc. ⁵SYNC with Traffic, Directions and Information available Spring 2009. ⁶The vehicle's electrical system (including the battery), the wireless service provider's signal, and a connected mobile phone must all be available and operating for 911 Assist to function properly. These systems may become damaged in a crash. The paired mobile phone must be turned on, connected to SYNC, and the 911 Assist feature enabled in order for 911 to be dialed.



Camry, Accord and Altima Can't Beat
Fusion Quality.

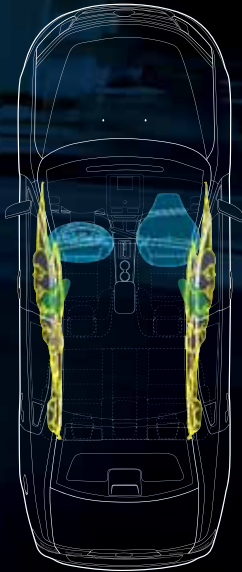
| Fusion SEL in Charcoal Black with Charcoal Black inserts and available equipment |

It's a fact. Ford Fusion is in a dead heat with Camry, Accord and Altima when it comes to quality.¹ On style: it's clearly beyond compare. As evidenced by its **PRECISELY HONED INTERIOR**, Fusion is always ready to impress. Set yours aglow with available **AMBIENT LIGHTING** and choose from 7 hues to match your shoes, your tattoos or whatever you like.

Fusion is the first midsize sedan in America to offer the awesome experience of a certified **SONY® AUDIO SYSTEM**. We're talking the very latest processing technology – Dolby® Automotive Entertainment Program (DAEP) 5.1 Surround Sound – bringing the home-theater performance of Dolby Pro Logic® II right into your Fusion. Imagine the rush as **390 WATTS** of continuous power make their way through **2 AMPLIFIERS** and **12 SPEAKERS** straight to your brain. Available exclusively with the Moon & Tune Package.

¹Based on cumulative survey data of 2008 MY Ford and competitive owners at 3 months of service among vehicles registered between 9/07-5/08.

Every Fusion gets **6 AIRBAGS¹** standard, including the **DUAL-STAGE FRONT** airbags in our Personal Safety System,TM **FRONT-SEAT SIDE** airbags and **2-ROW SIDE-CURTAIN** airbags.



Protects

BETTER THAN EVER.



Ford Fusion⁵ earned 5 Stars⁶ – the highest possible score – in frontal crash test ratings.



| Fusion Sport in Brilliant Silver Metallic with available equipment |

Building on its status as a 2009 IIHS **"TOP SAFETY PICK,"** Fusion has more standard safety features than ever for 2010. Brake-Actuated **TRACTION CONTROL** joins our standard AdvanceTrac[®] **ELECTRONIC STABILITY CONTROL² (ESC)** to help you stay on track. According to a National Highway Traffic Safety Administration (NHTSA) study,³ ESC reduced single-vehicle passenger car crashes by 35% compared to similar models without the technology. Of course,

you'll also find 6 airbags standard on every Fusion, plus a unique new knee airbag for Fusion Hybrid drivers. The new **SOS POST-CRASH ALERT SYSTEM^{TM4}** flashes Fusion's hazard lights and sounds the horn to attract help after an airbag has deployed or a safety belt pretensioner has activated in certain collisions. Fusion's got you covered. All around.

¹Always wear your safety belt and secure children in the rear seat. ²Remember that even advanced technology cannot overcome the laws of physics. It's always possible to lose control of a vehicle due to inappropriate driver input for the conditions. ³U.S. Dept. of Transportation study, Sept. 2004 (www.nhtsa.gov). ⁴SOS hardware may become damaged or the battery may lose power during a crash, which could prevent operation. Not all crashes will activate an airbag or safety belt pretensioner. ⁵Fusion Hybrid has yet to be tested. ⁶Star ratings are part of the U.S. Department of Transportation's Safercar.gov program (www.safercar.gov).

MANEUVERS
Smarter
THAN EVER.

**REAR VIEW CAMERA
SHOWS YOU WHAT'S BACK THERE.**



For visual assistance, a new Rear View Camera is available as part of the Driver's Vision Package and the Electronics Package. It puts a full-color image in the rearview mirror (on models without Navigation), or on the 8" screen of the available Navigation System. The available Reverse Sensing System sounds a warning to alert you of certain objects behind the vehicle as you slowly back up.

**BLIS® WITH CROSS TRAFFIC ALERT
WARNS YOU WITH SIGHT AND SOUND.**

Fusion is the only vehicle in its class¹ to offer the available new BLIS (Blind Spot Information System) with Cross Traffic Alert. When BLIS detects a vehicle in your blind spot, it flashes an amber light in your sideview mirror. Cross Traffic Alert sounds a warning when it detects a vehicle approaching either side of Fusion while you're slowly moving in Reverse.



¹Midsized Sedan class.

Spoils You

WITH TECH TREATS.

Every Fusion is **WELL-EQUIPPED** on the technical front with a remote keyless-entry system, an anti-theft perimeter alarm, speed-sensitive windshield wipers, power-adjustable sideview mirrors, and even a Tire Pressure Monitoring System, all standard. Inside, you'll find the **CONVENIENCE** of standard power door locks and windows with a one-touch-up/-down driver-window feature, a message center with trip computer, an audio input jack, and much more. Of course, you've also got lots of options to make Fusion **UNIQUELY YOURS**.

Available Features:

- A. 7-Color Ambient Lighting
- B. Heated Leather-Trimmed Front Seats
- C. Ford SYNC® with USB Port
- D. SYNC Steering Wheel-Mounted Controls
- E. Power Moonroof with Sunshade
- F. SecuriCode™ Keyless-Entry Keypad
- G. 110-Volt Power Point (standard on Hybrid only)
- H. 12-Speaker 390-Watt Sony® Audio System
- I. Easy Fuel™ Capless Fuel-Filler System (standard)



EXCELS IN STORAGE

Versatility.

With up to **116.8 CU. FT.** of total interior volume,¹ the new Ford Fusion is more spacious than Malibu. Plus, it boasts **MORE TRUNK SPACE AND STORAGE VERSATILITY** than Malibu, Camry or Altima. The quick-release 60/40 split-folding rear seat on Fusion S, SE, SEL and Sport makes it easy to load bulkier items. Combine it with the available fold-flat front-passenger seat to **FIT ITEMS UP TO 9'** in length from trunk to dashboard.



A. Available 60/40 Split-Folding Rear Seat and Fold-Flat Front-Passenger Seat¹

B. Up to 16.5-Cu.-Ft. Trunk Capacity¹

C. Open Console Storage

D. Covered Center Floor Console (shown with available Ford SYNC[®])

E. Door Storage/Beverage Holder

F. In-Dash Coin Tray

G. Dual Rear Beverage Holders

H. Covered Dash Storage



¹Non-Hybrid models.

Specs



DIMENSIONS & CAPACITIES

Exterior

Wheelbase	107.4"
Length	190.6"
Height	56.9"
Width – Excluding mirrors	72.2"
Width – Including mirrors	80.1"

Interior

Head room	38.7"/37.8"
Shoulder room	57.4"/56.5"
Hip room	54.0"/53.3"
Leg room	42.3"/37.1"

Capacities

	Fusion/Fusion Hybrid
Passenger volume (cu. ft.)	100.3/99.8
Luggage capacity (cu. ft.)	16.5/11.8
Total interior volume (cu. ft.)	116.8/111.6
Fuel capacity (gal.)	
FWD	17.5
AWD	16.5

HORSEPOWER, TORQUE AND 2010 EPA-ESTIMATED FUEL ECONOMY

2.5L Duratec® I-4 engine

Horsepower	175 @ 6000 rpm
Torque (lb.-ft.)	172 @ 4500 rpm
6-speed automatic (S)	23 mpg city/34 hwy.
6-speed manual (S)	22 mpg city/31 hwy.
6-speed automatic (SE, SEL)	22 mpg city/31 hwy.
6-speed manual (SE)	22 mpg city/29 hwy.

3.0L Duratec V6 FFV engine²

Horsepower	240 @ 6550 rpm
Torque (lb.-ft.)	223 @ 4300 rpm
6-speed SelectShift Automatic™	
FWD (SE, SEL)	18 mpg city/27 hwy.
AWD (SEL)	18 mpg city/25 hwy.

3.5L Duratec V6 engine

Horsepower	263 @ 6250 rpm
Torque (lb.-ft.)	249 @ 4500 rpm
6-speed SelectShift Automatic	
FWD (Sport)	18 mpg city/27 hwy.
AWD (Sport)	17 mpg city/24 hwy.

2.5L iVCT Atkinson-cycle I-4 engine with Permanent-Magnet AC-synchronous electric motor

Net horsepower	191
Electronically controlled Continuously Variable Transmission (eCVT)	41 mpg city/36 hwy.

STANDARD

Mechanical

Front-wheel drive (FWD)
4-wheel disc Anti-lock Brake System (ABS)
Power rack-and-pinion steering
Stabilizer bars – 24-mm front and 16-mm rear (17-mm rear on V6)
Suspension – Front: independent Short- and Long-Arm
Suspension – Rear: multilink independent

Safety & Security

Personal Safety System™ for driver and front passenger includes dual-stage front airbags ³ , safety belt pretensioners, safety belt energy-management retractors, safety belt usage sensors, driver-seat position sensor, crash severity sensor, restraint control module and Front-Passenger Sensing System
Front-seat side airbags ³
2-row side-curtain airbags ³
3-point safety belts for all seating positions
AdvanceTrac® electronic stability control ⁴ with Brake-Actuated Traction Control
Anti-theft perimeter alarm
Battery saver
Belt-Minder® front safety belt reminder
Child-safety rear door locks
Emergency in-trunk release
Illuminated entry
LATCH – Lower anchors and tether anchors for child-safety seats
Remote keyless entry with integrated keyhead transmitters (2)
SecuriLock® passive anti-theft ignition system
Side-intrusion door beams
SOS Post-Crash Alert System™ flashes hazard lights and sounds horn after airbag deployment or safety belt pretensioner activation in certain collisions ⁵
Tire Pressure Monitoring System (excludes spare)

Seating

2-way manual front-passenger seat
5-passenger seating
60/40 split-folding spring-assisted rear seat (non-Hybrid only)
Rear-seat fold-down center armrest with beverage holders (non-Hybrid only)

Interior

6 beverage holders (4 in Hybrid)
12-volt power points (2)
Accessory delay for power features
Auxiliary audio input jack in center console
Cabin air filter
Dual sliding sun visors with mirrors
Full center console with armrest and two-tiered storage
Grocery bag hooks in trunk
In-dash storage compartment
Message center with trip computer
Overhead console with dome and map lights (not available with moonroof)
Power door locks
Power trunk release
Power windows with one-touch-up/-down driver-window feature
Tilt/telescoping steering column

Exterior

Bright-chrome 3-bar grille
Easy Fuel™ capless fuel-filler system
Power sideview mirrors
Quad-beam halogen headlamps
Solar-tinted glass
Speed-sensitive windshield wipers

New Vehicle Limited Warranty. We want your Ford Fusion or Fusion Hybrid ownership experience to be the best it can be. So under this warranty, your new vehicle comes with 3-year/36,000-mile Bumper-to-Bumper Coverage, 5-year/60,000-mile Powertrain Warranty Coverage, 5-year/50,000-mile Safety Restraint Coverage, and 5-year/unlimited-mile Corrosion (Perforation) Coverage – all with no deductible. Fusion Hybrid is also covered by an 8-year/100,000-mile Hybrid Limited Warranty.⁶ Please ask your Ford Dealer for copies of these limited warranties.

Roadside Assistance covers your vehicle for 5 years or 60,000 miles, so you have the security of knowing that help may be only a phone call away should you run out of fuel, lock yourself out of the vehicle, or need towing. Your Ford Dealer can provide complete details on all of these advantages.

Ford Credit. Get the ride you want. Whether you plan to lease or finance, you'll find the choices that are right for you at Ford Credit. Ask your Ford Dealer for details or check us out at fordcredit.com.

Ford Extended Service Plan. For a purchase or lease, the Ford Extended Service Plan (ESP) gives you "Peace-of-Mind" protection designed to cover key vehicle components and protect you from the cost of unexpected repairs. Ask your dealer for a Ford ESP, the only service contract backed exclusively by Ford and honored at all Ford Lincoln Mercury dealerships.

Insurance Services. Get Ford Motor Company quality in your auto insurance. Our program offers industry-leading benefits and competitive rates. Call 1-877-367-3847, or visit us at fordvip.com for a no-obligation quote. Insurance offered by American Road Services Company (in CA, American Road Insurance Agency), a licensed agency and subsidiary of Ford Motor Company.

Comparisons based on 2009 competitive models (Midsize Sedan class), publicly available information and Ford certification data at time of release. Some features discussed may be optional. Vehicles shown may contain optional equipment. Features shown may be offered only in combination with other options or subject to additional ordering requirements or limitations. Dimensions shown may vary due to optional features and/or production variability. Following release of this PDF, certain changes in standard equipment, options and the like, or product delays may have occurred which would not be included in these pages. Your Ford Dealer is the best source for up-to-date information. Ford Division reserves the right to change product specifications at any time without incurring obligations.

Sony is a registered trademark of Sony Corporation.
Dolby and Pro Logic are registered trademarks of Dolby Laboratories.

© 2009 Ford Motor Company

10FUSWEBPDF

¹36.7" on Fusion Hybrid.

²Fuel economy when operating on E85 will yield different values than gasoline. See *Fuel Economy Guide* for more information.

³Always wear your safety belt and secure children in the rear seat.

⁴Remember that even advanced technology cannot overcome the laws of physics. It's always possible to lose control of a vehicle due to inappropriate driver input for the conditions.

⁵SOS hardware may become damaged or the battery may lose power in a crash, which could prevent operation.

⁶Not all crashes will activate an airbag or safety belt pretensioner.

⁷10-year/150,000-mile Hybrid Battery Limited Warranty in California, Connecticut, Maine, Massachusetts, New Jersey, New York, Rhode Island and Vermont. See dealer for details.



FUSION S

Equipped with all standard features, plus:

Rapid Spec 100A

- 2.5L DOHC Duratec® I-4 engine
- 6-speed manual transmission
- 16" 5-spoke painted-aluminum wheels
- P205/60R16 all-season tires
- 4-way manual driver seat
- Single-zone manual air conditioning
- AM/FM stereo/single-CD player with MP3 capability and 4 speakers
- Manual day/night rearview mirror
- Single exhaust

Available Option

- 6-speed automatic transmission

FUSION SE

Equipped with all standard S features, plus:

Rapid Spec 200A

- 17" 5-spoke-design steel wheels with silver-painted covers
- P225/50R17 all-season tires
- 6-way power driver seat with manual lumbar
- Fold-flat front-passenger seat
- Front and rear carpeted floor mats
- Driver and front-passenger seatback map pockets
- Dual sliding sun visors with illuminated mirrors
- AM/FM stereo/single-CD player with MP3 capability and 6 speakers
- SIRIUS® Satellite Radio¹ with 6-month subscription
- Single exhaust with dual chrome tips
- Body-color, power sideview mirrors
- Bright beltline
- Fog lamps

Available Option Groups

Rapid Spec 201A: Ford SYNC® voice-activated communications and entertainment system,² and auto-dimming rearview mirror with microphone and compass

Rapid Spec 202A: Sun & SYNC Package – Power tilt-and-slide moonroof, auto-dimming rearview mirror with microphone and compass, and Ford SYNC

Available Options

- 3.0L V6 FFV engine with 6-speed SelectShift Automatic™ transmission
- 6-speed automatic transmission (2.5L I-4)
- Rear spoiler
- Reverse Sensing System
- White Platinum Metallic Tri-Coat paint

FUSION SEL

Equipped with all standard SE features, plus:

Rapid Spec 300A

- 6-speed automatic transmission
- 17" 5-spoke machined-aluminum wheels
- P225/50R17 V-rated all-season tires
- 8-way power driver seat
- 6-way power front-passenger seat
- Leather-trimmed seats
- Heated front seats
- Ambient Lighting
- Auto-dimming rearview mirror with microphone and compass
- Dual-zone Electronic Automatic Temperature Control
- Steering wheel-mounted cruise and audio controls
- Ford SYNC voice-activated communications and entertainment system
- Automatic headlamps
- SecuriCode™ keyless-entry keypad
- Body-color, power, heated sideview mirrors with security approach lamps

Available Option Groups

Rapid Spec 301A: Moon & Tune Package – Power tilt-and-slide moonroof, and Sony® Audio System with DAEP 5.1 Surround Sound, AM/FM stereo/6-disc in-dash CD changer, MP3 capability, 12 speakers and 390 watts

Rapid Spec 302A: Moon & Tune Package + Driver's Vision Package – BLIS® (Blind Spot Information System) with Cross Traffic Alert and Rear View Camera + Reverse Sensing System

Available Options

- 3.0L V6 FFV engine with 6-speed SelectShift Automatic transmission
- 18" machined-aluminum wheels with painted pockets, P225/45R18 V-rated performance tires and sport-tuned suspension
- All-Wheel Drive (3.0L V6 only)
- Hard drive-based, voice-activated Navigation System featuring SIRIUS Travel Link™³ (with complimentary 6-month subscription) and nearly 10 gigabytes of digital storage for pictures and music; includes Sony Audio System with DAEP 5.1 Surround Sound, AM/FM stereo/single-CD/DVD, MP3 capability, 12 speakers and 390 watts⁴
- Rear spoiler
- Reverse Sensing System
- White Platinum Metallic Tri-Coat paint

FUSION SPORT

Equipped with all standard SE features, plus:

Rapid Spec 400A

- 3.5L V6 engine with 6-speed SelectShift Automatic transmission
- 18" 5-spoke painted-aluminum wheels
- P225/45R18 V-rated all-season tires
- 8-way power driver seat
- Auto-dimming rearview mirror with compass and microphone
- Ford SYNC voice-activated communications and entertainment system
- Leather-trimmed seats available with Charcoal Black, Red or Blue seat and door-trim Inserts
- Leather-wrapped steering wheel
- Steering wheel-mounted cruise and audio controls
- Unique appliques on center stack and dash available in Slate, Red or Blue
- Chrome-accented exterior trim
- Dual chrome exhaust tips
- Rear spoiler
- Side rocker moldings
- Sport-tuned suspension

Available Option Groups

Rapid Spec 401A: Moon & Tune Package

Rapid Spec 402A: Moon & Tune Package + Electronics Package – BLIS (Blind Spot Information System) with Cross Traffic Alert, Rear View Camera, 6-way power passenger seat, heated front seats, Dual-zone Electronic Automatic Temperature Control, Ambient Lighting, automatic headlamps, heated sideview mirrors with security approach lamps, and SecuriCode keyless-entry keypad + Reverse Sensing System

Available Options

- All-Wheel Drive (AWD)
- Hard drive-based, voice-activated Navigation System featuring SIRIUS Travel Link (with complimentary 6-month subscription) and nearly 10 gigabytes of digital storage for pictures and music; includes Sony Audio System with DAEP 5.1 Surround Sound, AM/FM stereo/single-CD/DVD, MP3 capability, 12 speakers and 390 watts⁵
- Reverse Sensing System

FUSION HYBRID

Equipped with all standard I-4 SEL features, plus:

Rapid Spec 500A

- 2.5L IVCT I-4 Atkinson-cycle engine with Permanent-Magnet AC-synchronous electric motor
- Electronically controlled Continuously Variable Transmission (eCVT)
- 275-volt sealed nickel-metal-hydride (NiMH) battery
- 17" 15-spoke painted-aluminum wheels
- P225/50R17 V-rated all-season tires
- 110-volt power point
- SmartGauge™ with EcoGuide instrument cluster with 2 configurable LCD screens and message center
- AM/FM stereo/6-disc in-dash CD changer, MP3 capability and 6 speakers
- Driver knee airbag⁶
- Fixed rear seat
- Eco-friendly cloth seating
- Regenerative Braking System
- Reverse Sensing System

Available Option Groups

Rapid Spec 501A: Moon & Tune Package + Driver's Vision Package

Rapid Spec 502A: Moon & Tune Package + Driver's Vision Package + Leather-trimmed seats with heated front seats + Hard drive-based, voice-activated Navigation System featuring SIRIUS Travel Link (with complimentary 6-month subscription) and nearly 10 gigabytes of digital storage for pictures and music; includes Sony Audio System with DAEP 5.1 Surround Sound, AM/FM stereo/single-CD/DVD, MP3 capability, 12 speakers and 390 watts

Available Options

- Hard drive-based, voice-activated Navigation System featuring SIRIUS Travel Link (with complimentary 6-month subscription) and nearly 10 gigabytes of digital storage for pictures and music; includes Sony Audio System with DAEP 5.1 Surround Sound, AM/FM stereo/single-CD/DVD, MP3 capability, 12 speakers and 390 watts⁴
- Leather-trimmed seats with heated front seats⁴
- White Platinum Metallic Tri-Coat paint

¹Service not available in Alaska or Hawaii. ²SIRIUS, the SIRIUS dog logo and related marks are trademarks of SIRIUS Satellite Radio Inc. ³Driving while distracted can result in loss of vehicle control. Only use mobile phones and other devices, even with voice commands, when it is safe to do so. ⁴Real-time traffic monitoring available in select markets. Not available in Alaska or Hawaii. Some features are unavailable while driving. ⁵Requires Moon & Tune Package + Driver's Vision Package. ⁶Requires Moon & Tune Package + Electronics Package. ⁷Always wear your safety belt and secure children in the rear seat.

Exterior COLORS



Sangria Red Metallic



Sport Blue Metallic



Sterling Grey Metallic



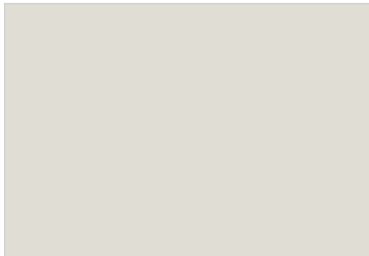
Smokestone Metallic



Light Ice Blue Metallic



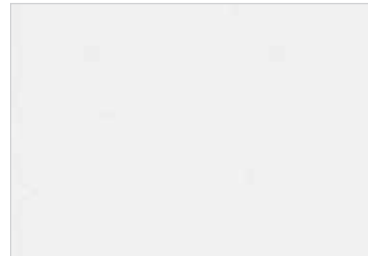
Tuxedo Black Metallic



White Suede



Atlantis Green Metallic



White Platinum Metallic Tri-Coat



Brilliant Silver Metallic

S	Interior Colors
Sangria Red Metallic	●
Smokestone Metallic	●
Tuxedo Black Metallic	●
White Suede	●
Brilliant Silver Metallic	●

SE	Interior Colors
Sangria Red Metallic	● ●
Sport Blue Metallic	●
Sterling Grey Metallic	● ●
Smokestone Metallic	● ● ●
Tuxedo Black Metallic	● ●
White Suede	●
Atlantis Green Metallic	● ● ●
White Platinum Metallic Tri-Coat	● ● ● ●
Brilliant Silver Metallic	● ●

SEL	Interior Colors
Sangria Red Metallic	● ● ●
Sport Blue Metallic	●
Sterling Grey Metallic	● ●
Smokestone Metallic	● ● ●
Tuxedo Black Metallic	● ● ●
White Suede	●
Atlantis Green Metallic	● ● ●
White Platinum Metallic Tri-Coat	● ● ● ●
Brilliant Silver Metallic	● ●

Sport	Interior Colors
Sangria Red Metallic	● ●
Sport Blue Metallic	● ●
Tuxedo Black Metallic	● ●
Brilliant Silver Metallic	● ●

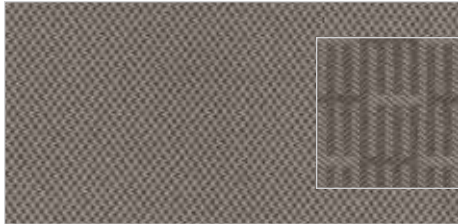
Hybrid	Interior Colors
Sterling Grey Metallic	● ●
Light Ice Blue Metallic	● ●
Tuxedo Black Metallic	● ●
Atlantis Green Metallic	● ●
White Platinum Metallic Tri-Coat	● ●
Brilliant Silver Metallic	● ●

INTERIORS: ● Medium Light Stone ● Charcoal Black
● Camel ● Sport Red ● Sport Blue

Ford uses clearcoat paint for beauty and protection. Colors shown are representative only. Not all colors are available on all models. See your dealer for actual paint/trim options.

Interior

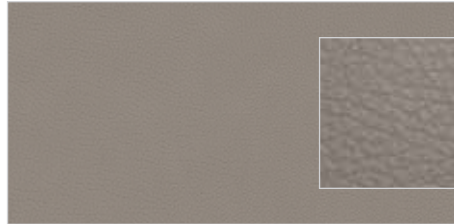
COLORS



Cloth - Medium Light Stone with Medium Light Stone inserts
Standard on S and SE



Brushed-Aluminum accents



Leather - Medium Light Stone with Medium Light Stone inserts
Standard on SEL, Available on Hybrid



Black Carbon Weave accents
SEL



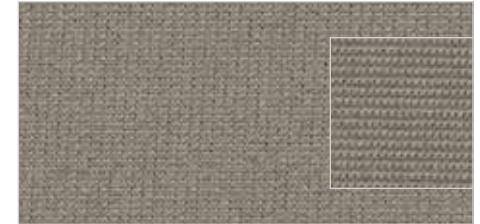
Silver Carbon Weave accents
Hybrid



Leather - Charcoal Black with Charcoal Black inserts
Standard on Sport



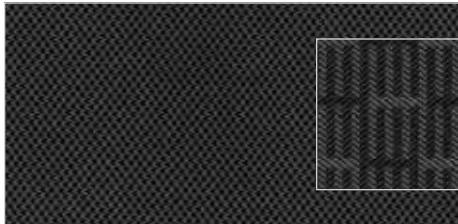
Polished Slate accents



Cloth - Medium Light Stone with Medium Light Stone inserts
Standard on Hybrid



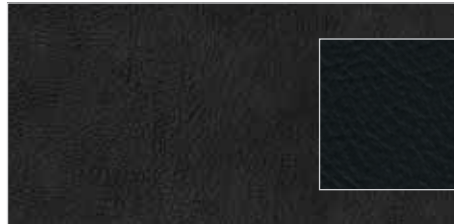
Silver Carbon Weave accents



Cloth - Charcoal Black with Charcoal Black inserts
Standard on SE



Brushed-Aluminum accents



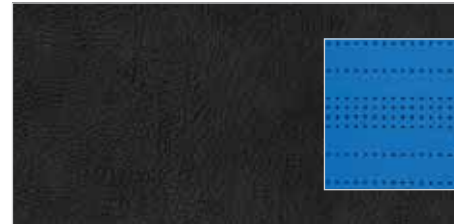
Leather - Charcoal Black with Charcoal Black inserts
Standard on SEL, Available on Hybrid



Black Carbon Weave accents
SEL



Silver Carbon Weave accents
Hybrid



Leather - Charcoal Black with Sport Blue inserts
Standard on Sport



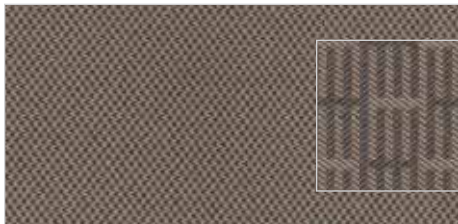
Blue Racer accents



Cloth - Charcoal Black with Charcoal Black inserts
Standard on Hybrid



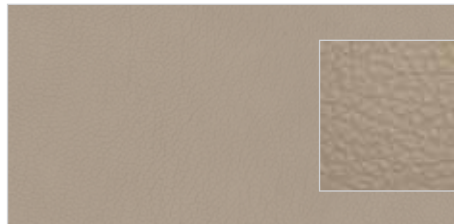
Silver Carbon Weave accents



Cloth - Camel with Camel inserts
Standard on SE



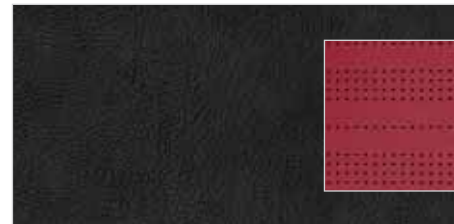
Brushed-Aluminum accents



Leather - Camel with Camel inserts
Standard on SEL



Woodgrain accents



Leather - Charcoal Black with Sport Red inserts
Standard on Sport



Cherry Red accents

Wheels

16" Painted-Aluminum
Standard on S



17" 5-Spoke-Design Steel with Silver-Painted Cover
Standard on SE



17" 5-Spoke Machined-Aluminum
Standard on SEL



18" Machined-Aluminum
with Painted Pockets
Optional on SEL



18" 5-Spoke Painted-Aluminum
Standard on Sport



17" 15-Spoke Painted-Aluminum
Standard on Hybrid

THE FACTS ABOUT FORD.



Drive quality.

FACT: On top of earning 8 *Consumers Digest* "Best Buy" awards for 2009 models, Ford Motor Company is **unsurpassed** by Toyota and Honda when it comes to quality.¹



Drive green.

FACT: Ford builds the **most fuel-efficient midsize sedan** in America (Fusion Hybrid: 41 mpg city)² and the **most fuel-efficient SUV** on the planet (Escape Hybrid: 34 mpg city)³



Drive safe.

FACT: No other car company offers you more vehicles that have received both 2009 IIHS "Top Safety Pick" and NHTSA 5-Star crash test ratings.⁴



Drive smart.

FACT: The voice-activated **Ford SYNC**® customizable media system and **EcoBoost™ V6 engines** are just a few of the innovative technologies you can only find in a Ford.

Visit fordvehicles.com to learn more.



Drive one.



Drive one.

¹Based on cumulative survey data of 2008 MY Ford and competitive owners at 3 months of service in 3 surveys conducted 9/07-5/08. ²EPA-estimated 23 mpg city/34 hwy., combined 27 mpg, for Fusion S I-4 automatic; 41 mpg city/36 hwy. for Fusion Hybrid. Actual mileage will vary. Midsize class per R. L. Polk. ³Based on unadjusted city fuel economy from EPA (10/08) and VCA (5/08). 2009 EPA-estimated 34 mpg city/31 hwy. for Escape Hybrid FWD. Excluding vehicles built for Mazda. ⁴Based on NHTSA 5-Star ratings for all 4 crash test categories. Star ratings are part of the U.S. Department of Transportation's Safercar.gov program (www.safercar.gov).