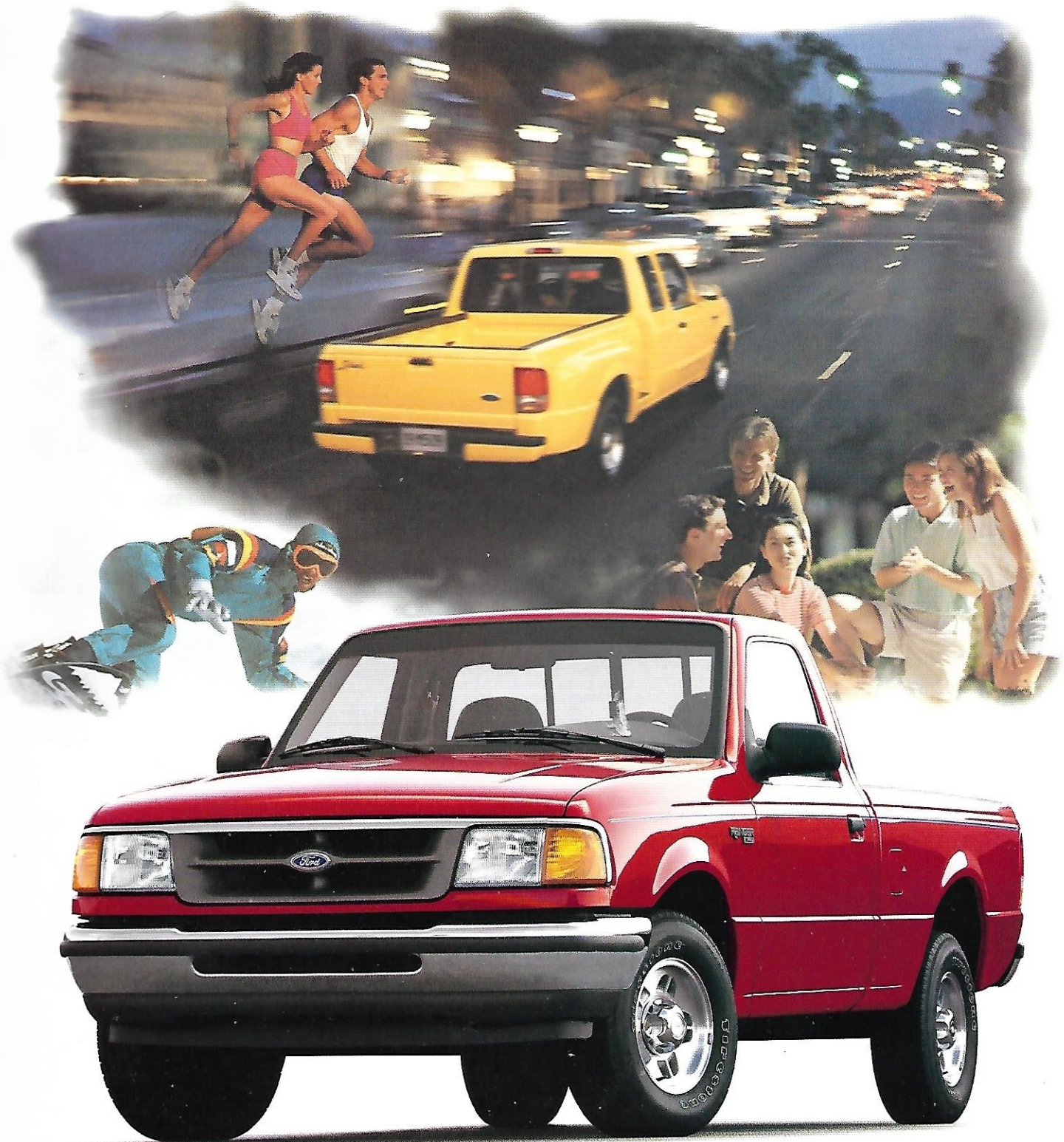




1 9 9 7

# RANGER





# RANGER: THE FOREMOST AUTHORITY ON FUN



The stylish Ranger XLT Flareside in Black Clearcoat. Flareside is an option with XL and XLT.



AMERICA'S MOST-SELLING COMPACT PICKUP

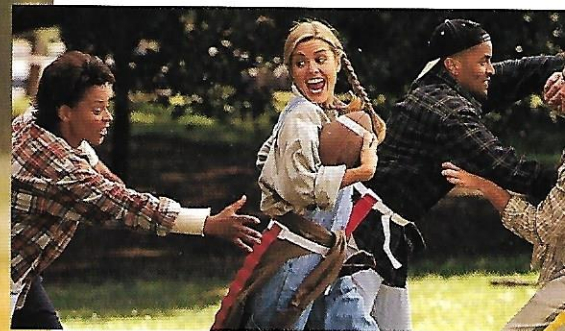


WHAT COMPACT TRUCKS ARE ALL ABOUT



**UGH!**

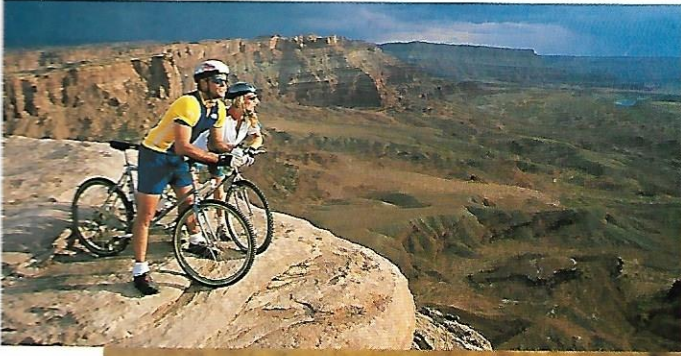
The versatile, roomy Ranger XLT  
SuperCab in Portofino Blue  
Clearcoat Metallic.



**Tough. Fun to drive.**  
**Great to look at.**  
**Ford Ranger XLT is**  
**shown here in Sapphire**  
**Blue Clearcoat Metallic.**



# RANGER 4x4: ONE VERY TOUGH CUSTOMER



4x4



*"Tread Lightly" is an educational program designed to increase awareness of land-use regulations and responsibilities in our wilderness areas. Ford joins the U.S. Forest Service and the Bureau of Land Management in encouraging you to preserve our national forests and other public and private lands by "treading lightly."*



**Above: Ranger Splash SuperCab 4x4 in Toreador Red Clearcoat Metallic.**

When the going gets tough, the tough get the rugged performance of the Ranger 4x4. With two V6 engine choices, including the 160-hp 4.0 liter, you have all the muscle you need. Every Ranger 4x4 comes with the convenience and smooth operation of Ford's switch-on electric shift transfer case with auto-locking hubs.

**Ranger XLT SuperCab 4x4 in Cayman Green Clearcoat Metallic.**





**Above: Ranger XLT SuperCab with 60/40 split bench seat in Medium Prairie Tan. SuperCab has 22.2 cu. ft. behind the front seats (18.3 in models with rear jump seats).**



**A 6-way power driver's seat is available in SuperCab with the optional sport bucket seats.**



**Right: Ranger XLT SuperCab interior with optional sport cloth bucket seats in Medium Prairie Tan.**

**Some equipment shown is optional.**

**Below: Pivoting quarter windows and sliding rear window are available on the XLT, STX and Splash SuperCabs.**



**Whether you're tall or short, you can adjust the height of your shoulder belt to your own comfort needs.**







# THE INSIDE SCOOP

Ranger's new optional single-CD player includes a digital clock.





# EQUIPPED TO PROTECT YOU



All Ranger models come standard with a rear anti-lock braking system (ABS).

4-wheel anti-lock brakes are optional with XLT, STX and Splash. Both systems help provide steering control while braking under most conditions, even on wet or slippery surfaces.



Every Ranger comes with a standard driver's air bag to supplement the safety belts. A passenger air bag is available that includes a deactivation switch. To help protect the child, the switch should be used whenever a rear-facing child safety seat is secured in the outboard front passenger seating position.



Ford's 4x4 switch-on electric shift transfer case with automatic locking hubs lets you shift "on the fly."



# POWERED TO MOVE YOU



The rugged, V6-powered Ranger XLT 4x4 is shown here in Bright Red Clearcoat.

The 2.3L 4-cylinder (below) is the standard engine for Ranger 4x2s. The spirited 3.0L SEFI V6 engine (not shown) is the powerplant for all 4x4 models.



The optional 4.0L SEFI single overhead cam V6 (shown below) delivers the ultimate in Ranger performance.



Designed to efficiently handle the power of the 4.0L V6, a new 5-speed automatic transmission is available for 1997. An exclusive in light trucks, its five forward speeds improve performance.

## POWERTRAIN AVAILABILITY BY TRIM MODEL

	Regular Cab 4x2				SuperCab 4x2			
	XL	XLT	STX	Splash	XL	XLT	STX	Splash
2.3L I4/5-Speed Man.	S	S	-	S	S	S	-	-
2.3L I4/4-Speed Auto.	0	0	-	0	-	-	-	-
3.0L V6/5-Speed Man.	0	0	-	0	0	0	-	S
3.0L V6/4-Speed Auto.	0	0	-	0	0	0	-	0
4.0L V6/5-Speed Man.	-	0	-	0	-	0	-	0
4.0L V6/5-Speed Auto.	-	0	-	0	-	0	-	0

	Regular Cab 4x4				SuperCab 4x4			
	XL	XLT	STX	Splash	XL	XLT	STX	Splash
3.0L V6/5-Speed Man.	S	S	S	S	S	S	S	S
3.0L V6/4-Speed Auto.	0	0	0	0	0	0	0	0
4.0L V6/5-Speed Man.	-	0	0	0	-	0	0	0
4.0L V6/5-Speed Auto.	-	0	0	0	-	0	0	0

## ENGINE SPECIFICATIONS

Engine*	Displacement (liters/cubic inches)	Bore x Stroke	Compression Ratio	Horsepower (SAE net)	Torque, lbs./ft. (SAE net)
2.3-liter SEFI I-4	2.3/140	3.78 x 3.13	9.4:1	112 @ 4,800 rpm	135 @ 2,400 rpm
3.0-liter SEFI V-6	3.0/182	3.50 x 3.14	9.3:1	147 @ 5,000 rpm	162 @ 3,250 rpm
4.0-liter SEFI V-6	4.0/245	3.95 x 3.32	9.0:1	160 @ 4,200 rpm	220 @ 3,000 rpm

\*All engines have Sequential Electronic Fuel Injection (SEFI).



# DEALER ACCESSORIES FOR YOUR RANGER



This hood-mounted air deflector helps keep your windshield clear of bugs.



The high-density bedliner helps guard against damage and includes a protective tailgate panel.



The sport hood cover adds style while helping to protect your Ranger's paint finish.

WHAT KIND OF FORD BRAND ACCESSORIES CAN YOU GET FOR YOUR RANGER? YOU CAN GET A LOT OF THEM. AND YOU CAN GET THEM AT A GREAT PRICE. VISIT US AT FORD.COM FOR MORE INFORMATION.



You can add this quick-release tailgate lock to Ranger's long list of convenience features.



The tubular rear bumper not only adds sporty styling flair but also has heavy-duty construction.

## Great factory options, too

The power windows option has a



"one-touch-down" feature for the convenience of the driver.



Speed control has a feature to let you increase or decrease your speed in increments of one mile per hour.



Fog lamps are available on the XLT and STX 4x4 models, as well as on the XL.



The optional CD changer lets you select up to six discs.





# Preferred Equipment Packages

## Ranger XL



### Notable XL Standard Features

- Rear step bumper
- Dual foldaway mirrors — right-hand convex
- Tinted glass
- Easily removable tailgate
- Mud flaps

- Driver-side air bag
- Illuminated entry system
- A cigarette lighter and two 12-volt power points
- Interval windshield wipers
- Front dome light

## Ranger XLT



### 864A (Reg. Cab)/853A (SuperCab)

- XLT Group (see pages 13-14)
- Electronic AM/FM stereo radio/cassette
- Power steering (standard on SuperCab)

### 867A\* (Reg. Cab)/856A\* (SuperCab)

- XLT Group (see pages 13-14)

- Electronic AM/FM stereo radio/cassette/premium sound
- Power steering (standard on SuperCab)
- Air conditioning
- Power mirrors
- Power window/lock group
- Speed control and leather-wrapped tilt wheel
- Passenger-side air bag
- Remote keyless entry with anti-theft
- Tachometer (4x2)

\*Package items may not be deleted.

## Ranger STX 4x4



### 865A (Reg. Cab)/854A (SuperCab)

- Sport cloth bucket seats with floor console
- Rear jump seat (SuperCab)
- Electronic AM/FM stereo radio/cassette
- Speed control and leather-wrapped tilt wheel
- Fog lamps
- P235/75R15SL OWL all-terrain tires
- Luxury aluminum wheels
- Sliding rear window

### 868A\* (Reg. Cab)/857A\* (SuperCab)

- Sport cloth bucket seats with floor console
- Rear jump seat (SuperCab)
- Electronic AM/FM stereo radio/cassette/premium sound
- Air conditioning
- Power mirrors
- Power window/lock group
- Speed control and leather-wrapped tilt wheel
- Fog lamps
- Passenger-side air bag
- Remote keyless entry with anti-theft
- P235/75R15SL OWL all-terrain tires
- Luxury aluminum wheels
- Sliding rear window

\*Package items may not be deleted.

## Ranger Splash



### 866A (Reg. Cab)/855A (SuperCab)

- Splash Group: sliding rear window with tinted glass (privacy glass with SuperCab);

- bodyside protection moldings; rear jump seat (SuperCab)
- Electronic AM/FM stereo radio/cassette

## MEASUREMENTS (EXTERIOR/INTERIOR)

Wheelbase	Cab Length	Box Length (at Cargo Floor)	Box Width (maximum)
107.9" Regular Cab	104.3"	71.8"	54.4"
113.9" Regular Cab	104.3"	83.8"	54.4"
125" SuperCab	121.0"	71.8"	54.4"
Load Height at Cargo Floor (Empty)	Front Tread	Rear Tread	Axle Clearance
4x2/4x4	4x2/4x4	4x2/4x4	4x2/4x4
26.7"/29.5"	56.6"/58.3"	57.3"	6.2"/7.5"
26.8"/29.4"	56.6"/58.3"	57.3"	6.2"/7.5"
25.8"/28.3"	56.6"/58.3"	57.3"	6.2"/7.5"
Cargo Compartment*	Regular Cab		SuperCab
Pickup box depth	16.4"		16.4"
Cargo volume — cu. ft. (no allowance for wheelhouses)			
Short wheelbase	37.4		—
Long wheelbase	43.5		37.4

\* Does not include Splash.

## RANGER REGULAR CAB SPECIFICATIONS

	4x2	4x4
GVW Rating (max.)	4,700 lbs.	4,980 lbs.
Shock absorbers	Gas-pressurized; opt. HD	Std. HD gas-pressurized
Front stabilizer bar	Std.	Std.
Rear stabilizer bar	Opt.*	Std.
Power brakes with rear anti-lock	Std.	Std.
Power brakes with 4-wheel anti-lock	Opt.	Opt.
4x4 front hubs	—	Std. automatic locking Opt. manual locking**
4x4 transfer case	—	Std. switch-on electric shift Opt. 2-speed manual shift
Fuel capacity	Std. 17 gals. Opt. 20 gals.*	Std. 17 gals. Opt. 20 gals.*
Power steering	Std. on STX, Splash; opt. on XL, XLT	

\*Available for XL and XLT with Handling Package. Included with Splash. \*\*With manual transmission only. \*With 113.9" wheelbase and 3.0- or 4.0-liter V6 engine; standard with STX 4x4.

## STYLESIDE MAXIMUM TRAILER WEIGHTS\*

Automatic	Axle Ratio	GCWR Max.	Regular Cab		SuperCab	
			4x2	4x4	4x2	4x4
2.3L SEFI I4	3.73	5,500	2,300	—	—	—
3.0L SEFI V6	3.45	7,000	3,700	—	—	—
	3.73	7,500	4,000	3,900	4,000	3,600
	4.10	8,000	—	4,400	—	4,100
4.0L SEFI V6	3.08	6,000	2,700	—	2,400	—
	3.27	7,500	—	3,800	—	3,600
	3.55	9,500	6,000	—	5,900	—
	3.73	9,500	—	5,800	—	5,600

## PAYLOAD PACKAGE SELECTOR\*

Regular Cab	Package No.	Payload	GVWR	Tires (Min.)
4x2 SWB	#1 Std.	1,250 lbs.	4,220 lbs.	P195/70Rx14SL
4x2 SWB	#2 Opt.	1,650 lbs.	4,680 lbs.	P215/70Rx14SL
4x2 LWB	#1 Std.	1,250 lbs.	4,260 lbs.	P195/70Rx14SL
4x2 LWB	#2 Opt.	1,650 lbs.	4,700 lbs.	P215/70Rx14SL
4x4 SWB	#1 Std.	1,250 lbs.	4,660 lbs.	P215/75Rx15SL
4x4 SWB	#2 Opt.	1,550 lbs.	4,960 lbs.	P215/75Rx15SL
4x4 LWB	#1 Std.	1,250 lbs.	4,680 lbs.	P215/75Rx15SL
4x4 LWB	#2 Opt.	1,550 lbs.	4,980 lbs.	P215/75Rx15SL
SuperCab				
4x2	#1 Std.	1,250 lbs.	4,500 lbs.	P195/70Rx14SL
4x2	#2 Opt.	1,550 lbs.	4,880 lbs.	P215/70Rx14SL
4x4	#1 Std.	1,250 lbs.	4,920 lbs.	P215/75Rx15SL
4x4	#2 Opt.	1,450 lbs.	5,100 lbs.	P215/75Rx15SL

\* Ranger Styleside model information provided. See your Ford Dealer for Splash model information. SWB = short wheelbase (107.9" Regular Cab). LWB = long wheelbase (113.9" Regular Cab). Payload is the maximum allowable weight of people, cargo, and body equipment and is reduced by the weight of optional equipment.

## RANGER SUPERCAB SPECIFICATIONS

	4x2	4x4
GVW Rating (max.)	4,880 lbs.	5,160 lbs.
Shock absorbers	Gas-pressurized; opt. HD	Std. HD gas-pressurized
Front stabilizer bar	Std.	Std.
Rear stabilizer bar	Opt.*	Std.
Power brakes with rear anti-lock	Std.	Std.
Power brakes with 4-wheel anti-lock	Opt.	Opt.
4x4 front hubs	—	Std. automatic locking Opt. manual locking**
4x4 transfer case	—	Std. switch-on electric shift Opt. 2-speed manual shift
Fuel capacity	20.5 gals.	20.5 gals.
Power steering	Std.	Std.

\*Available for XL and XLT with Handling Package. Included with Splash. \*\*With manual trans. only.

## STYLESIDE MAXIMUM TRAILER WEIGHTS\*

Manual	Axle Ratio	GCWR Max.	Regular Cab		SuperCab	
			4x2	4x4	4x2	4x4
2.3L SEFI I4	3.73	4,800	1,600	—	1,300	—
	4.10	4,800	—	1,300	—	—
3.0L SEFI V6	3.45	5,000	1,800	—	1,500	—
	3.73	6,000	2,800	2,400	2,500	2,100
	4.0L SEFI V6	3.08	5,000	1,700	—	1,500
4.0L SEFI V6	3.27	6,000	—	2,000	—	2,000
	3.55	7,000	3,700	—	3,400	—
	3.73	7,000	—	3,400	—	3,000

\*See your dealer for trailer towing weights for Splash model and for Styleside models with the Splash sport suspension.



## REGULAR CAB 4x2/4x4 PREFERRED EQUIPMENT PACKAGES, FEATURES AND OPTIONS

Note: Package content is subject to change.

P = Included in package S = Standard O = Optional

### GROUP FEATURES

	XL 861A	XLT 864A 867A*		STX 4x4 865A 868A*		Splash 866A
XLT Group: tape stripe; P225/70R14SL OWL all-season tires (4x2); P235/75R15SL OWL all-terrain tires (4x4); deep-dish cast aluminum wheels; sliding rear window with tinted glass	-	P	P	-	-	-
Luxury Group: air conditioning; speed control and leather-wrapped tilt wheel; tachometer (standard with 4x4); remote keyless entry with anti-theft; power window/lock group; power mirrors; electronic AM/FM stereo radio with cassette player, premium sound system, digital clock	-	-	P	-	P	-
STX Group: speed control and leather-wrapped tilt steering wheel; luxury aluminum wheels; P235/75R15SL OWL all-terrain tires; fog lamps; sliding rear window	-	-	-	P	P	-
Splash Group: sliding rear window with tinted glass; bodyside protection molding	-	-	-	-	-	P

### SEATING

3-passenger vinyl bench seat	S	-	-	-	-	-
60/40 cloth "captain" split bench seat with floor console	O	S	S	S	S	S
Sport cloth bucket seats with floor console	-	-	O	P	P	O

### STEREO SYSTEMS

Radio credit option - deletes standard AM/FM radio <sup>(1)</sup>	S	-	-	-	-	-
Electronic AM/FM stereo radio with digital clock (standard with 4x4)	O	S	S	S	S	S
Electronic AM/FM stereo radio with cassette player and digital clock	O	P	-	P	-	P
Electronic AM/FM stereo radio with cassette, premium sound system and digital clock	-	O	P	O	P	O
Single-CD player with digital clock	-	O	-	O	-	O
Multi-disc CD changer	-	-	O	-	O	O

### COMFORT/CONVENIENCE

Air conditioning (includes super engine cooling)	O	O	P	O	P	O
Power mirrors	-	O	P	O	P	S
Power window/lock group	-	O	P	O	P	O
Speed control and tilt steering wheel (leather-wrapped in STX)	-	O	P	P	P	O
Sliding rear window with tinted glass	-	P	P	P	P	P
3-point height-adjustable lap/shoulder safety belts for outboard seating positions	S	S	S	S	S	S

### APPEARANCE/PROTECTION

Fog lamps (with V6 engine only)	-	O	O	P	P	-
Bodyside protection moldings	-	O	O	O	O	P
Deluxe two-tone paint	-	O	O	-	-	-
Tape stripe not included (deletes STX tape stripe)	-	-	-	O	O	-
Flareside box (108-in. wheelbase). Not available with 4.0-liter engine	O	O	O	-	-	-

### PERFORMANCE/SAFETY (see page 9 for powertrains)

Passenger air bag to supplement the safety belts (with deactivation switch)	O	O	P	O	P	O
4-wheel anti-lock brakes	-	O	O	O	O	O
Remote keyless entry with anti-theft	-	O	P	O	P	O
Power steering — standard on 4x4	O	P	P	S	S	S
Tachometer — standard on 4x4	-	O	P	S	S	O
Performance axle — for V6 engine	O	O	O	O	O	O
Handling package — standard on 4x4 <sup>(2)</sup>	O	O	O	S	S	-
Payload package #2 (standard on 4x4 XLT, STX)	O	O	O	S	S	O

### TIRES AND WHEELS

P195/70R14SL BSW all-season — 4x2	S	S	S	-	-	-
P215/70R14SL BSW all-season — 4x2 <sup>(3)</sup>	O	-	-	-	-	-
P225/70R14SL OWL all-season — 4x2	O	P	P	-	-	-
P235/60R15SL BSW all-season — 4x2 <sup>(4)</sup>	-	O	O	-	-	S
P235/75R15SL OWL all-terrain — 4x4	O	P	P	P	P	S
P215/75R15SL OWL all-terrain — 4x4	S	S	S	S	S	-
P265/75R15SL OWL all-terrain — 4x4	-	O	O	O	O	-
Argent styled steel wheels with bright hub caps — 4x2/4x4	S	-	-	-	-	-
Full face steel wheels — 4x2/4x4	O	S	S	S	S	-
Deep-dish cast aluminum wheels (standard with Splash 4x4) — 4x2/4x4	O	P	P	-	-	S
Full face chrome wheels — 4x2	-	O	O	-	-	S
Luxury aluminum wheels — 4x4	-	-	-	P	P	-

\* Features designated as "P" may not be deleted from the Preferred Equipment Package. (1) Available with 2.3L engine only; standard on 4x2 only. (2) Rear stabilizer bar (front is standard) and heavy-duty shock absorbers. (3) Includes features in the handling package. (4) Unique shock absorbers, springs and stabilizer bars.



**SUPERCAB 4x2/4x4 PREFERRED EQUIPMENT PACKAGES, FEATURES AND OPTIONS**

Note: Package content is subject to change.

P = Included in package S = Standard O = Optional

GROUP FEATURES	XL		XLT		STX 4x4		Splash
	850A	853A	856A*	854A	857A*	855A	
<b>XLT Group:</b> tape stripe; P225/70R14SL OWL all-season tires (4x2); P235/75R15SL OWL all-terrain tires (4x4); sliding rear window/privacy glass; rear jump seat; deep-dish cast aluminum wheels	-		P P	-	-	-	-
<b>Luxury Group:</b> air conditioning; speed control/leather-wrapped tilt wheel; tachometer (standard with 4x4); remote keyless entry with anti-theft; power window/lock group; power mirrors; electronic AM/FM stereo radio with cassette player, premium sound system, digital clock	-	-	P	-	P	-	-
<b>STX Group:</b> speed control and leather-wrapped tilt steering wheel; luxury aluminum wheels; P235/75R15SL OWL all-terrain tires; rear jump seat; fog lamps; sliding rear window	-	-	-	P	P	-	-
<b>Splash Group:</b> sliding rear window with privacy glass; rear jump seat; bodyside protection moldings	-	-	-	-	-	-	P
<b>SEATING</b>							
60/40 cloth "captain" split bench seat with floor console	S	S	S	S	S	S	S
Sport cloth bucket seats with floor console	-	O	O	P	P	O	O
6-way power driver's sport bucket seat	-	-	O	-	O	O	O
Rear jump seat	O	P	P	P	P	P	P
<b>STEREO SYSTEMS</b>							
Radio credit option — deletes standard AM radio <sup>(1)</sup>	S	-	-	-	-	-	-
Electronic AM/FM stereo radio with digital clock (standard with 4x4)	O	S	S	S	S	S	S
Electronic AM/FM stereo radio with cassette player and digital clock	O	P	-	P	-	P	P
Electronic AM/FM stereo radio with cassette player, premium sound system and digital clock	-	O	P	O	P	O	O
Single-CD player with digital clock	-	O	-	O	-	O	O
Multi-disc CD changer	-	-	O	-	O	O	O
<b>COMFORT/CONVENIENCE</b>							
Air conditioning (includes super engine cooling)	O	O	P	O	P	O	O
Power mirrors	-	O	P	O	P	S	S
Power window/lock group	-	O	P	O	P	O	O
Speed control and tilt steering wheel (leather-wrapped in STX)	-	O	P	P	P	O	O
Sliding rear window with privacy glass	-	P	P	P	P	P	P
Pivoting quarter windows with privacy glass	-	O	O	O	O	O	O
<b>APPEARANCE/PROTECTION</b>							
Fog lamps (with V6 engine only)	-	O	O	P	P	-	-
Bodyside protection moldings	-	O	O	O	O	P	P
Deluxe two-tone paint	-	O	O	-	-	-	-
Tape stripe not included (deletes STX tape stripe)	-	-	-	O	O	-	-
Flareside box (not available with 4.0-liter engine)	O	O	O	-	-	-	-
<b>PERFORMANCE/SAFETY (see page 9 for powertrains)</b>							
Passenger air bag to supplement safety belts (with deactivation switch)	O	O	P	O	P	O	O
4-wheel anti-lock brakes	-	O	O	O	O	O	O
Remote keyless entry with anti-theft	-	O	P	O	P	O	O
Tachometer — standard on 4x4	-	O	P	S	S	O	O
Performance axle — for V6 engine	O	O	O	O	O	O	O
Handling package — standard on 4x4 <sup>(2)</sup>	O	O	O	S	S	-	-
Payload package #2	O	O	O	O	O	O	O
<b>TIRES AND WHEELS</b>							
P195/70R14SL BSW all-season — 4x2	S	S	S	-	-	-	-
P215/70R14SL BSW all-season — 4x2 <sup>(3)</sup>	O	-	-	-	-	-	-
P225/70R14SL OWL all-season — 4x2	O	P	P	-	-	-	-
P235/60R15SL BSW all-season — 4x2 <sup>(4)</sup>	-	O	O	-	-	S	S
P215/75R15SL OWL all-terrain — 4x4	S	S	S	S	S	-	-
P235/75R15SL OWL all-terrain — 4x4	O	P	P	P	P	S	S
P265/75R15SL OWL all-terrain — 4x4	-	O	O	O	O	-	-
Argent styled steel wheels with bright hub caps — 4x2/4x4	S	-	-	-	-	-	-
Full face steel wheels — 4x2/4x4	O	S	S	S	S	-	-
Deep-dish cast aluminum wheels (std on Splash 4x4) — 4x2/4x4	O	P	P	-	-	S	S
Full face chrome wheels — 4x2	-	O	O	-	-	S	S
Luxury aluminum wheels — 4x4	-	-	-	P	P	-	-

\*Features designated as "P" may not be deleted from the Preferred Equipment Package. (1) Available with 2.3L engine only; standard on 4x2 only. (2) Rear stabilizer bar (front is standard) and heavy-duty shock absorbers. (3) Includes handling package features. (4) Unique shock absorbers, springs and stabilizer bars.

**MAJOR FORD RANGER STANDARD FEATURES**

**Exterior**

- Aero halogen headlamps
- Grille: painted with painted molding (XL, STX), painted with bright molding (XLT), color-keyed with color-keyed molding (Splash)
- Front bumper: painted (XL, STX), bright (XLT), color-keyed (Splash)
- Rear step bumper: painted (XL, STX), bright (XLT), color-keyed (Splash)
- Mirrors: black foldaway—RH convex; color-keyed power (Splash)
- Tinted glass
- Easily removable tailgate
- Cargo box light (XLT, STX, Splash)
- Cargo area cover (XLT, STX and Splash SuperCabs)
- Wheel opening flares (4x4 models except Splash)
- Mud flaps (except Splash 4x2)
- High-mount center stop lamp

**Interior**

- Driver air bag to supplement the safety belts
- Lap and height-adjustable shoulder belts for outboard seating positions
- Fuel, temperature, oil pressure and voltmeter gauges; trip odometer
- Illuminated entry system
- A cigarette lighter and two 12-volt power accessories outlets
- Interval windshield wipers
- Tachometer (standard with 4x4)
- Courtesy lights: map light plus headlights-on warning chime
- Floor covering: black vinyl with insulation (XL), color-keyed carpet (XLT, STX, Splash)
- Headliner: color-keyed (XL Regular Cab), color-keyed with sound insulation and passenger grab handle (XL SuperCab, XLT, STX, Splash)

24-hour roadside assistance  
3-year/36,000-mile warranty



# Ranger Colors



## EXTERIOR PAINT AND TRIM COLORS

### XL, XLT, STX

Exterior Paint Colors	Interior Trim Colors			
	Royal Blue*	Willow Green*	Medium Graphite	Medium Prairie Tan
Cayman Green Clearcoat Metallic			■	■
Light Prairie Tan Clearcoat Metallic				■
Bright Red Clearcoat			■	■
Toreador Red Clearcoat Metallic			■	■
Sapphire Blue Clearcoat Metallic			■	■
Portofino Blue Clearcoat Metallic	■		■	■
Dark Blue Clearcoat Metallic	■		■	■
Medium Willow Green Clearcoat Metallic		■		■
Charcoal Grey Clearcoat Metallic	■			
Black Clearcoat		†	■	■
Silver Clearcoat Metallic	■	†	■	
Oxford White Clearcoat	■	■	■	■

\*STX and XLT only. †STX only. Note: See your dealer for deluxe two-tone color combinations available for Ranger XLT. Also see your dealer about availability of colors for Ranger XL and XLT models with the flareside box option.

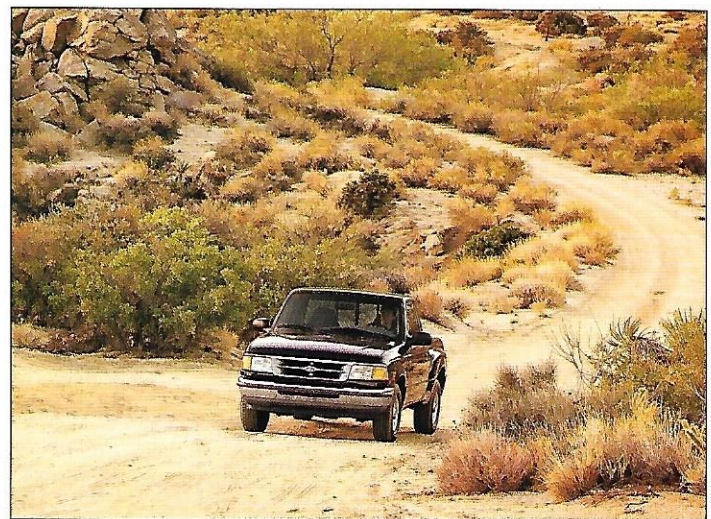
### Splash

Exterior Paint Colors	Interior Trim Colors	
	Medium Graphite	Medium Prairie Tan
Canary Yellow Clearcoat	■	■
Toreador Red Clearcoat Metallic	■	■
Sapphire Blue Clearcoat Metallic	■	■
Black Clearcoat	■	■



Argent wheel with bright hub cap (4x4) | Argent wheel with bright hub cap (4x2) | Full face steel wheel (4x2) | Full face steel wheel (4x4) | Cast aluminum deep-dish wheel | Full face chrome wheel | Luxury aluminum wheel

# Ownership Experience



## ROADSIDE ASSISTANCE PROGRAM

Every new Ford includes the assurance of a 24-hour emergency Roadside Assistance Program provided during the 3-year/36,000-mile bumper-to-bumper warranty. Ask your dealer for complete details on this program which includes such services as fuel delivery, tire change, jump start, or even help when you're locked out of your truck.



Ford Credit offers a wide variety of financing and leasing programs to qualified buyers which can be arranged right at the dealership. Ask your Ford Dealer for all the facts.



Optional Ford Extended Service Plans go beyond the basic 3-year/36,000-mile warranty.

Ask your dealer for complete details on the optional plans and for a copy of the limited warranty.



Using your Ford Citibank VISA® or MasterCard® could earn you hundreds, even thousands of dollars from Ford toward the purchase or lease of a new

Ford, Lincoln or Mercury product. To apply or get more information, call 1-800-374-7777. Or visit a Ford or Lincoln-Mercury Dealer, or a branch of Citibank.

## DEALER-INSTALLED ACCESSORIES

Your Ford Dealer offers a variety of quality Ford-brand accessories that meet or exceed our strict specifications.

## PRODUCT CHANGES AND OPTIONS AVAILABILITY

Following publication of the catalog, certain changes in standard equipment, options, prices and the like, or product delays, may have occurred which would not be included in these pages. Your Ford Dealer is your best source for up-to-date information.

Ford Division reserves the right to change product specifications at any time without incurring obligations.

Options shown or described are available at extra cost and may be offered only in combination with other options or subject to additional ordering requirements or limitations.

**For more information, visit our Web site at <http://www.ford.com>**





## BUILDING A COMPLETE LINE-UP OF QUALITY CARS AND TRUCKS



Aspire



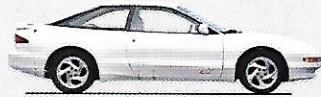
Explorer



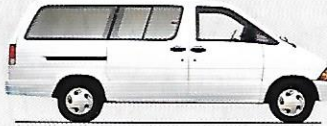
Escort



Windstar



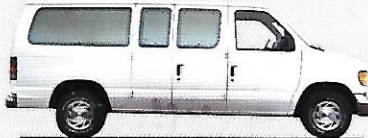
Probe



Aerostar



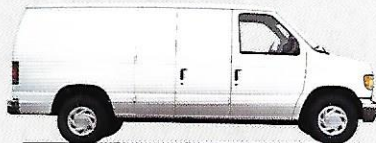
Mustang



Club Wagon



Contour



Econoline



Thunderbird



Taurus



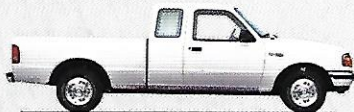
F-Series



Crown Victoria



Expedition



Ranger