

F O R D 1 9 9 2

Tempo



FORD TEMPO.
A STANDARD OF
GREAT VALUE THAT
JUST KEEPS ON
GETTING BETTER.

From day one, we've built Tempo's reputation on being a five-passenger car of solid design and engineering. For many, it combines comfort and efficiency in ways that simply make a lot of sense.

Computer design helps put available space to efficient use for surprising comfort.

The 4-wheel independent suspension delivers smooth ride quality. And under the hood is a fine balance of responsiveness and economy.

Although it might seem to make more sense to leave a good thing as it is, we are always looking for ways to make our products better.

Which is why we have incorporated state-of-the-art "sequential" electronic fuel-injection technology into Tempo's 2.3L I-4 and newly available 3.0L V-6. And also why, as a "customer-driven" company, we have made the Tempo GLS sports sedan more performance oriented.

Whatever your driving needs are, whether they're primarily personal or family, in Tempo's complete line of 2-door and 4-door sedans you will find the model to suit your style of driving.

There are luxury LX and deluxe GL sedans, both offering an optional driver-side air bag supplemental restraint system (4-door). And GLS, sportier looking and more comfortable than ever, and now V-6-powered.



Tempo LX in Titanium Frost Clearcoat Metallic with standard all-season performance radials and polycast wheels. Some equipment shown is optional.

FURTHER REFINED,
THE BEST TEMPO
LUXURY SEDAN
WE'VE EVER BUILT.
1992 TEMPO LX.

With an attitude of continuous improvement, every year we have worked to make the Tempo LX more stylish and more comfortable. And better in overall performance as well.

This year's Tempo LX is the best ever. The 2.3L I-4 engine is equipped with a new "sequential" electronic fuel injection (SEFI) system for improved driveability.

And now you can have a Tempo LX powered by a smooth and responsive 3.0L SEFI V-6, included in the LX Preferred Equipment Package with a 3-speed automatic transaxle (or 5-speed manual if you prefer).

The Tempo LX rides on a special touring suspension. And it's nicely appointed with plush carpeting and deluxe upholstery. Plus conveniences such as a tilt steering wheel, dual electric remote mirrors, and power lock group — these and many others, all standard.

The 1992 Tempo LX. It offers about everything you could ask for in a roomy, comfortable sedan. Plus the excellent value people have come to expect in a Tempo.

Tempo LX interior in Titanium. Some equipment shown is optional. Air conditioning and the 3.0L V-6 with automatic transaxle are among the features in the Preferred Equipment Package 233A.



MORE POWER.
MORE STYLE.
MORE COMFORT.
MORE TEMPO
GLS SPORTS
SEDAN DRIVING
ENJOYMENT.



Fog lamps. Bumper and bodyside cladding. The 15" performance tires and cast aluminum wheels. Decklid spoiler (on 2-door). Blackout rear pillar (on 4-door). Bright exhaust tips. There are certainly enough styling cues to leave no doubt that this is a sportier GLS sedan.

Equally impressive is the Tempo GLS interior.

The reclining sport performance bucket seats feature high-density foam pads in the side bolsters for firm lateral support through turns. The driver's seat has power-adjustable lumbar support for higher comfort.

Sports instrumentation with tachometer is standard, as are an electronic AM/FM stereo radio with cassette player, and the courtesy light group. Plus, this year, the comfort of air conditioning.

And Preferred Equipment Package 229A provides even more — excellent value on top of Tempo GLS's exciting sport style and performance.



Above: GLS 4-Door in Bimini Blue Clearcoat Metallic.

At left: GLS 2-Door in Bright Red.

Some equipment shown is optional.

While you'll like the new, sportier look of the Tempo GLS, we think you'll like the improved performance of this sports sedan even more.

The Tempo GLS for 1992 is powered by a responsive 3.0L V-6 that's equipped with a state-of-the-art sequential electronic fuel injection system controlled by Ford's EEC-IV computer. This engine is substantially more powerful than the GLS I-4 engine of years past.

You also have improved handling to go along with the GLS's potent new V-6. Because we have added a rear stabilizer bar to the components package (front stabilizer bar, higher-rate springs and unique gas-pressurized hydraulic struts) of the GLS sport suspension.

And it all rides on larger, lower-profile P185/60R15 84H performance radials mounted on 15" 8-spoke aluminum wheels.



The Tempo GLS for 1992 is the most exciting Tempo sports sedan ever. It's powered by a 3.0L V-6 equipped with a computer-controlled, sequential electronic fuel-injection system. Its tuned intake runners are designed to balance high-end power and low-end torque.

A COMFORTABLE
FIVE-PASSENGER
SEDAN YOU
CAN LOOK TO
FOR VALUE ABOVE
THE ORDINARY.



Tempo GL 2-Door
in Black.

Year after year, the Tempo GL goes about the business of doing what it's designed and equipped to do best: provide not just excellent value, but more product for the money than you might ordinarily expect.

Drivers of smaller cars can move up to an affordable Tempo GL and benefit from its fuel-efficient* 2.3L high-

swirl combustion (HSC) I-4 engine while enjoying the comfort of its roomy five-passenger interior.

Likewise, those who are accustomed to driving larger cars will appreciate the way Ford designers, with the aid of advanced computer design technology, have made the best use of available space to provide surprising comfort.

While out on a test drive, note the smoothness of the 2.3L HSC I-4 engine with sequential electronic fuel-injection. The excellent ride quality and handling, too, of Tempo's 4-wheel independent suspension system with gas-pressurized hydraulic struts.

Tempo GL 4-Door in Wild Strawberry Clearcoat Metallic with optional driver-side air bag supplemental restraint system.

Some equipment shown on these pages is optional.

*EPA mileage estimates not available at press time.

Add Preferred Equipment Package 226A to the Tempo GL's list of standard features (page 11) — for the money, this is unquestionably one of the best values you can find.

And now, the kind of smooth, high-torque power usually associated with larger-car performance is available with Tempo's new optional 3.0L SEFI V-6.

State-of-the-art sequential electronic multiple-port fuel injection (SEFI) is a major technological feature of both the 2.3L HSC I-4 and the 3.0L V-6 engines.

From impact to full deployment, the driver-side air bag inflates in less than 1/10 of a second. It also begins to deflate in but a fraction of a second.

The spray of fuel to each cylinder is released "sequentially" with the engine's spark firing order, making fuel metering more precise and efficient. The air volume is also precisely controlled — by an electronic mass air flow sensor.

The complex functions of this sophisticated induction system are just a few of the



The air bag, along with air conditioning, automatic transaxle, electric remote mirrors and other features, is included in the GL Preferred Equipment Package 227A.

engine operations governed by EEC-IV, a microprocessor that continuously fine-tunes the engine to the requirements of the moment.

The optional driver-side air bag supplemental restraint system is another example of advanced engineering.

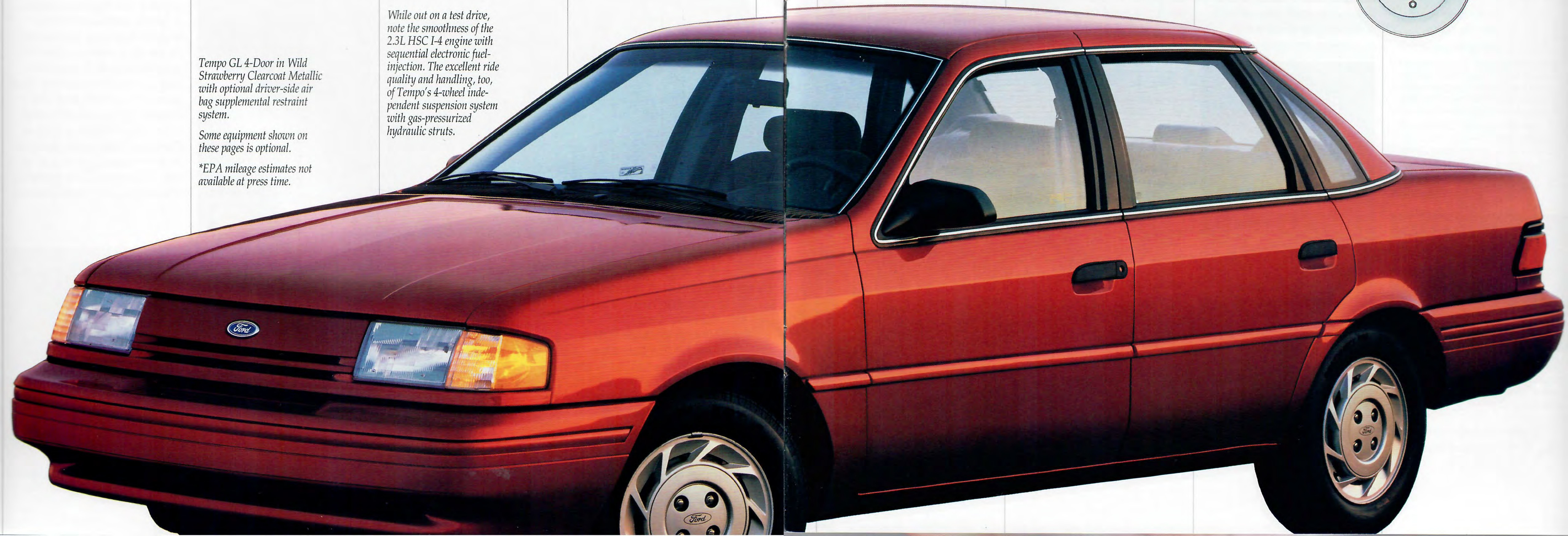
Designed to activate in a frontal impact roughly equivalent to striking a parked car

at 28 miles-per-hour, from impact to full deployment the air bag inflates in less than 1/10 of a second. And it also begins deflating in a fraction of a second.

Remember, the air bag is intended to supplement, not replace, the driver's lap and shoulder belts. So be sure to always buckle up for safety.



One of Tempo's many standard engineering features is the smooth stopping action of power front disc/rear drum brakes.





Speed controls are located within easy reach on the steering wheel.



Electronic AM/FM stereo radio with cassette tape player and digital clock



Manual air conditioning



Power lock group, with controls positioned on a convenient door panel

YOU'VE COME TO THE RIGHT PLACE FOR A ROOMY SEDAN THAT'S WELL-EQUIPPED AND AFFORDABLE.

Value is what Ford Tempo is all about. And there's plenty of value to be found in the Tempo Preferred Equipment Packages.

These packages, detailed on the next page, not only make it easy to order a well-equipped Tempo, they offer savings on select features. Compared with the individual prices of the items, the packages provide a substantial discount.

To further personalize the Ford Tempo model of your choice, choose from the selection of options available individually. The features shown on this page are just a few of Tempo's wide range of comfort and convenience options. You'll find that some of them are already included in select Preferred Equipment Packages. Features are subject to change over the course of the year. For the latest information, see your Ford Dealer.



The decklid luggage rack is not only a practical feature, but a stylish one as well.



Rear defroster clears the window of ice or mist for an added margin of safety.



Left to right: deluxe wheel covers; polycast wheels; and 8-spoke aluminum wheels with locking lugs.

PRODUCT CHANGES

Following publication of the catalog, certain changes in standard equipment, options, prices and the like, or product delays, may have occurred which would not be included in these pages. Your Ford Dealer is your best source for up-to-date information.

Ford Division reserves the right to change product specifications at any time without incurring obligations.

PREFERRED EQUIPMENT PACKAGES AND OPTIONS

Note: Package content is subject to change. X = Included in package S = Standard O = Optional

	GL 225A	GL 226A	SRS GL 4-DOOR 227A	GLS 229A	LX 233A
Appearance/Comfort/Convenience					
Manual air conditioning	X	X	X	S	X
Light group: ashtray, glove box, engine compartment lights; dome light door switches; map light	X	X	X	S	S
Dual electric remote-control mirrors	X	X	X	X	S
Speed control	O	O		X	O
Tilt steering wheel	X	X		X	S
Rear window defroster	O	X	X	X	X
Front center armrest	O	X	X	O	S
Front floor mats	O	X	X	X	S
Rear floor mats	O	X	X	X	S
Power lock group: power door locks, power decklid release and remote fuel filler door	O	X	X	X	S
Power side windows (4-door model only)	O	O	O	O	O
Power driver's seat	O	O	O	O	O
Decklid luggage rack (not available on 2-door GLS)	O	O	O	O	X
Driver-side air bag supplemental restraint system (4-door only)			X		O
Sport instrument cluster: tachometer and trip odometer	O	O	O	S	S
Clearcoat metallic paint	O	O	O	O	O
Stereo Systems					
Electronic AM/FM stereo with cassette player, digital clock	O	X	O	S	X
Premium sound system: four speakers and higher-output amplifier	O	O	O	X	O
Performance					
2.3L SEFI I-4 with 5-speed manual transaxle	S	S	S		S
2.3L SEFI I-4 with 3-speed automatic transaxle	O	X	X		O
3.0L SEFI V-6 with 5-speed manual transaxle	O	O		S	O
3.0L SEFI V-6 with 3-speed automatic transaxle	O	O		O	X
Tires and Wheels					
P185/70R14 BSW (WSW optional)	S	S	S		
P185/70R14 BSW Performance	O	O			S
P185/70R14 WSW Performance	O	O			O
P185/60R15 84H BSW Performance				S	
Polycast wheels	O	X	O		S
Aluminum wheels				S	

COLORS AND TRIMS

Exterior Paint Colors Tempo GL and LX	Interior Trim Colors			
	Titanium	Crystal Blue	Scarlet Red	Mocha
Light Mocha (1)				■
Medium Red (1) (2)	■		■	
Bright Red	■		■	
Light Blue (1) (2)	■	■		
Reef Blue Metallic (1) (2)	■			■
Black	■	■	■	■
Light Titanium (1) (2)	■	■	■	
Deep Bay Blue Metallic (1) (2)	■	■	■	
Oxford White	■	■	■	■
Mocha Frost Clearcoat Metallic (1)				■
Wild Strawberry Clearcoat Metallic (1)	■		■	
Bimini Blue Clearcoat Metallic	■	■		
Twilight Blue Clearcoat Metallic (1)	■	■		
Medium Titanium Clearcoat Metallic	■		■	
Titanium Frost Clearcoat Metallic	■	■	■	
Tempo GLS				
Bright Red	■		■	
Black	■	■	■	■
Oxford White	■	■	■	■
Bimini Blue Clearcoat Metallic	■	■		
Medium Titanium Clearcoat Metallic	■		■	

(1) Not available on GL 2-door model. (2) Not available on 4-door model with air bag supplemental restraint system.

MAJOR STANDARD FEATURES

Exterior

Aerodynamic halogen headlamps with "on" alert chimes
Wraparound taillamps/back-up lights
Tinted glass
Manual left-hand sail-mounted outside mirror (GL); dual electric remote-control mirrors (GLS, LX)
14" deluxe wheel covers (GL); 14" polycast wheels (LX); 15" 8-spoke aluminum wheels with locking lug nuts (GLS)

Interior

Five-passenger seating
Cloth low-back reclining bucket seats (GL); upgraded cloth trim (LX); cloth sport reclining bucket seats with driver-side power lumbar support (GLS)
Carpeting: deluxe (GL, GLS); luxury (LX)
Ashtrays, front and rear
Automatic shoulder belt restraint system with manual lap belt for front passengers
Manual lap/shoulder belts for outboard rear seating positions; lap belt for center rear occupant
Lockable glove box
Console
Footwell illumination and luggage compartment light
Cigarette lighter
Day/night rearview mirror
Dual sun visors with covers
Color-keyed steering wheel
Instrument panel — includes side window demisters, backlit cluster, lighted pointers, temperature gauge, pod-mounted rotary windshield wiper switch, rotary climate control fan switch, positive air duct shut-offs
Electronic AM/FM stereo radio with digital clock; also with cassette player in the GLS model (may be deleted for credit)
Cargo volume: 13.2 cu. ft. (2-Door); 13.1 cu. ft. (4-Door)

Functional

Front-wheel drive
Four-wheel independent suspension with nitrogen gas-pressurized hydraulic struts
Engine type: 2.3L HSC I-4 (GL, LX); 3.0L V-6 (GLS)
Induction system: sequential multiple-port electronic fuel injection
Electronic engine controls (EEC-IV)
Steering: power rack-and-pinion (18.3:1 on-center ratio)
Two-speed windshield wipers with variable-speed interval feature
Brakes: power front disc/rear drum, dual hydraulic split diagonal
Fuel tank: 15.9 gallons
Heavy-duty maintenance-free battery
Luxury sound insulation

6-YEAR/100,000-MILE CORROSION PROTECTION

Corrosion warranty coverage for outer body panel rust-through is 6 years or 100,000 miles, whichever comes first. See your Ford Dealer for a copy of this limited warranty.



Optional Ford Extended Service Plans cover major components on new Ford cars and light trucks for longer than the vehicle's basic warranty. Your Ford Dealer has full details.

MOTORCRAFT REPLACEMENT PARTS

Genuine Ford and Motorcraft original equipment replacement parts meet the

same high standards as those installed in production.



Ford Credit's Red Carpet Lease® program makes driving a new Ford even more pleasurable. With it, qualified lessees can drive a new car or truck every few years, and can generally select a more expensive vehicle (or one with more options) at a lower monthly payment. See your dealer today for details on Red Carpet Lease.

OPTIONS AVAILABILITY

Options shown or described in this catalog are available at extra cost and may be offered only in combination with other options or subject to additional ordering requirements or limitations.

