

WINDSTAR



2000 WINDSTAR





Safety has been a priority from day one. Windstar was the first minivan to earn the U.S. government's five-star front crash test rating. And it's the only vehicle to earn the government's highest rating in both front and side impact crash tests. A quadruple five-star rating.*

Since no single safety feature is any more important than the next, we equipped Windstar with over forty. Standard.

Safety features which help keep you in control include standard four-wheel anti-lock brakes and optional All-Speed Traction Control.

Safety cell construction, side door intrusion beams, Second Generation airbags,** tether strap anchors, the universal child safety seat system (UCSSS/ISOFIX), and optional side airbags are your standing guard.

And, yes, there are features like childproof rear sliding door locks and SecuriLock™ that simply add peace of mind.

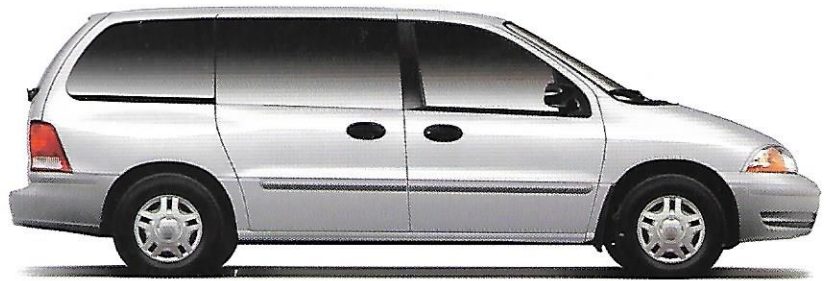
*During side impact crash tests, Windstar was equipped with optional side airbags.

**Always wear your safety belt and secure children in the rear seat.



WINDSTAR (late availability)

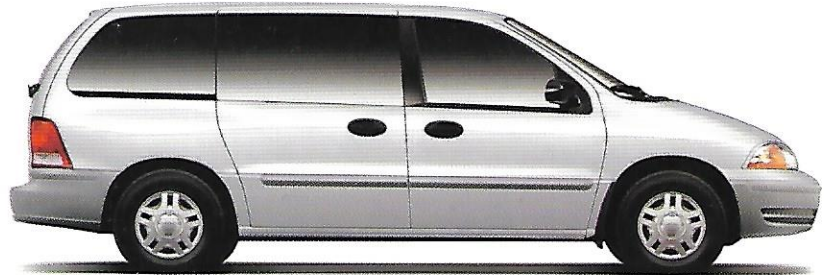
- 7-passenger seating
- Second Generation front airbags
- 4-wheel anti-lock braking system
- SecuriLock™ Passive Anti-Theft System
- Childproof sliding door locks
- Power Convenience Group
- 3rd- to 2nd-row seat flexibility
- 2nd-row bench seat indexing
- Manual air conditioning
- Electric rear window defroster
- Cargo area utility hooks
- 3.0L V6 engine with electronic 4-speed automatic overdrive transaxle, Low Emissions Vehicle
- 15" steel wheels with covers



WINDSTAR

WINDSTAR LX (Windstar features plus)

- Light Visibility Group
- Enhanced Seating Group
- Remote Keyless Entry System
- Speed control/tilt steering wheel
- AM/FM stereo/cassette
- 3.8L V6 engine with electronic 4-speed automatic overdrive transaxle, Low Emissions Vehicle



WINDSTAR LX

WINDSTAR SE (LX features plus)

- Comfort Group (includes privacy glass, roof rack and auxiliary air conditioning)
- Interior Convenience Group
- Driver-side/passenger-side sliding doors
- Electric remote heated mirrors
- Leather-wrapped steering wheel
- 6-way power driver's seat
- 2nd-row dual captain's chairs
- Full overhead console (includes conversation mirror)
- Cornering lamps
- 15" painted aluminum wheels



WINDSTAR SE

WINDSTAR SEL (SE features plus)

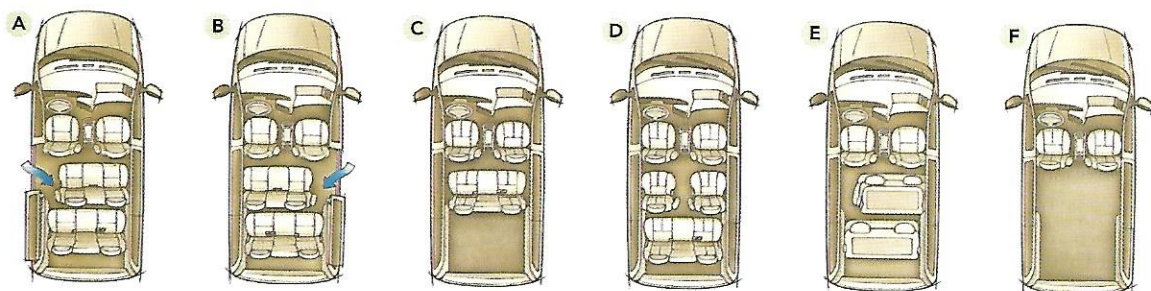
- Electronics Group (includes message center)
- Premium lighting
- Driver-side/passenger-side power sliding doors
- Leather-trim seats
- Premium stereo with CD/cassette and Personal Audio System
- 6-way power passenger seat
- Two-tone/monotone cladding
- 16" machined aluminum wheels



WINDSTAR SEL



dstar is designed to
 ot to the way you travel.
 l power sliding doors
 standard on SEL. The SE
 es with standard dual
 ng doors with optional
 er. And with a bench
 , there is a unique
 nd-row seat indexing
 ure, which allows the
 ch to be placed to the
 t- or left-side, so there's
 ear path to the back. No
 ter which side you load.



- A Driver-side second-row bench seat indexing.
- B Passenger-side second-row bench seat indexing.
- C Third-row into second-row.
- D Second-row bucket seats.
- E Second- and third-row forward-folding seats.
- F Second- and third-row seats removed.



Optional driver-side and passenger-side power sliding doors can be activated from two interior push-button locations and a remote key fob.



Medium Graphite
Shown in Leather Trim



Protection is enhanced by the universal child safety seat system (UCSSS/ISOFIX). Windstar is the first minivan to use UCSSS/ISOFIX, a safety feature that one day be an industry standard.



Second- and third-row seat rollers make it easier to remove or install seats.



Standard cargo area utility hooks and a cargo organizer (dealer-installed accessory) help keep your things in place.



Medium Parchment
Shown in Cloth

Exterior	Windstar LX	SE	SEL
3-door	●	●	-
Driver-side sliding door	●	●	●
Passenger-side power sliding door (requires full-size console; 4-door and Comfort Group on LX)	-	●	●
Driver-side/passenger-side power sliding doors	-	-	●
Privacy glass	-	●	●
Roof rack	-	●	●
Electric remote mirrors	●	●	-
Electric remote heated mirrors (part of Family Security Package on LX)	-	●	●

Comfort and Convenience

Reverse Sensing System (4-door only)	-	●	●
Floor console	-	●	●
Floor mats	●	●	●
Leather-wrapped steering wheel	-	-	●
Illuminated sun visors	-	-	●
Powerpoints, two front row and one cargo area	●	●	●
Electric rear window defroster	●	●	●
Manual air conditioning	●	●	●
"Sleeping Baby Mode" lights	●	●	●
Power Convenience Group: power mirrors, door locks, and windows; illuminated switches (front doors); accessory delay; autolock	●	●	●
Comfort Group: auxiliary climate control system; privacy glass; roof rack; mini overhead console (4-door only)	-	●	●
Electronics Group: message center; electrochromic mirror; autolamp; trainable transmitter	-	-	●
Light Visibility Group: 2nd-row reading lamps, 3rd-row reading lamps (SEL only), glove box lamp, front-row floor lamps, front map lamps and front door panel courtesy lamps (SE and SEL only), B-pillar lamps (included with Remote Keyless Entry System on Windstar)	●	●	●
Interior Convenience Group: center stack console cover; rear cargo net	-	-	●
Full overhead console (requires 4-door and Comfort Group on LX): conversation mirror; coin holder; sunglasses holder; garage door opener holder; reading lamp; dome lamp	-	●	●

Safety and Security	Windstar LX	SE	SEL
Second Generation driver and front passenger airbags	●	●	●
Front-row side airbags	●	●	●
Universal child safety seat and tether strap anchors (UCSSS/ISOFIX)	●	●	●
4-wheel anti-lock brake system	●	●	●
SecuriLock™ Passive Anti-Theft System	●	●	●
Family Security Package: self-sealing tires (LX and SE); traction control; perimeter anti-theft, heated mirrors (standard on SE, SEL)	-	●	●
3-point lap/shoulder belts with 1st- and 2nd-row D-ring height adjusters	●	●	●
Cornering lamps	-	-	●
Perimeter anti-theft (part of Family Security Package)	-	●	●
Childproof sliding door locks	●	●	●
Remote Keyless Entry System	●	●	●

Seating

6-way power driver's seat (requires Comfort Group and 4-door on LX)	-	●	●
Leather-trim seats (includes power driver and passenger bucket seat with lumbar support)	-	-	●
6-way power passenger seat (requires leather-trim seats)	-	-	●
Enhanced Seating Group: 2nd/3rd-row adjustable seat tracks, seat recline, bench seat rollers; map pockets and grab handles on back of 1st-row seats, 2nd-row seat-mounted cupholders	●	●	●
Front seats: dual high-back premium cloth buckets with integral head restraints, fore/aft manual adjustment, reclining adjustment, inboard armrests	●	●	-
Front seats: dual low-back premium cloth buckets with adjustable head restraints, 6-way power driver's seat, map pockets and grab handles on seat backs and inboard armrests	-	-	●
Rear seats: 2nd-row 2-passenger and 3rd-row 3-passenger bench seat both with forward folding seat backs and outboard head restraints	●	●	-



15" steel wheel
with cover



15" painted
aluminum wheel

ing Windstar LX SE SEL

seats: 2nd-row dual captain's s with recline and adjustable s, 3rd-row bench with recline, stable track and rollers ines Comfort Group on LX)	-	●	●	●
seats: 2nd- and 3rd-row er-trim seats	-	-	●	●
to 2nd-row flexibility	●	●	●	●
row bench seat indexing -entry feature	●	●	-	-
Optional				
ter V6 engine with electronic eed automatic overdrive axle, Low Emissions Vehicle	●	-	-	-
ter V6 engine with electronic eed automatic overdrive axle, Low Emissions Vehicle	●	●	●	●
id control/tilt steering wheel	●	●	●	●
ir Tow Package (Class I): hicle wiring harness, throw-in er wiring harness, module	●	●	●	●
ir Tow Package (Class II): ary transmission cooler, heavy- battery, trailer wiring harness odule, full-size spare tire, speed ambient temperature age module	-	●	●	●
he block heater	●	●	●	●
ize spare tire	-	-	●	●
Audio/Video				
FM stereo	●	-	-	-
FM stereo/cassette	●	●	●	-
remium AM/FM stereo/cassette/ e CD includes Personal Audio m and rear seat controls ires overhead console on (or LX)	-	●	●	●
hanger prep	-	●	●	●
on Rear Seat Entertainment m with headphones (availability)	-	-	●	●

Standard ● optional ●
Equipment at no charge ●

Product Changes and Options Availability
 Upon publication of the catalog, certain changes in standard equipment,
 prices and the like, or product delays, may have occurred which
 may not be included in these pages. Your Ford Dealer is your best source
 for up-to-date information. Ford Division reserves the right to change
 specifications at any time without incurring obligations. Options
 as described are available at extra cost and may be offered only in
 conjunction with other options or subject to additional ordering
 requirements or limitations.



15-spoke painted
aluminum wheel



16" machined
aluminum wheel





In the SEL there are six-way power-adjustable driver and passenger seats, each with lumbar support. Also a convenient Digital Message Center with oil-life monitor, compass and outside temperature display. And you'll notice that Windstar instruments are easy to read and knobs are easy to operate, so you can keep your eyes on the road.

In back, all eyes are on the Visteon Rear Seat Entertainment System, which makes trips seem a whole lot shorter for everyone.

WINDSTAR

Multi-Purpose Vehicle. What exactly does it mean? We've obviously given it a lot of thought. At Ford, it means safety. The highest U.S. government crash test ratings ever. It also means a smooth car-like ride and engines strong enough to pull you out of a bind (and into the passing lane). Along with seating that's

flexible enough to take on a couch or the toughest peewee hockey team you can recruit. And when properly equipped, up to a 3,500-pound towing capacity. We've got you covered. After all, Windstar is the definition. Hey, why not throw in good looks, too?

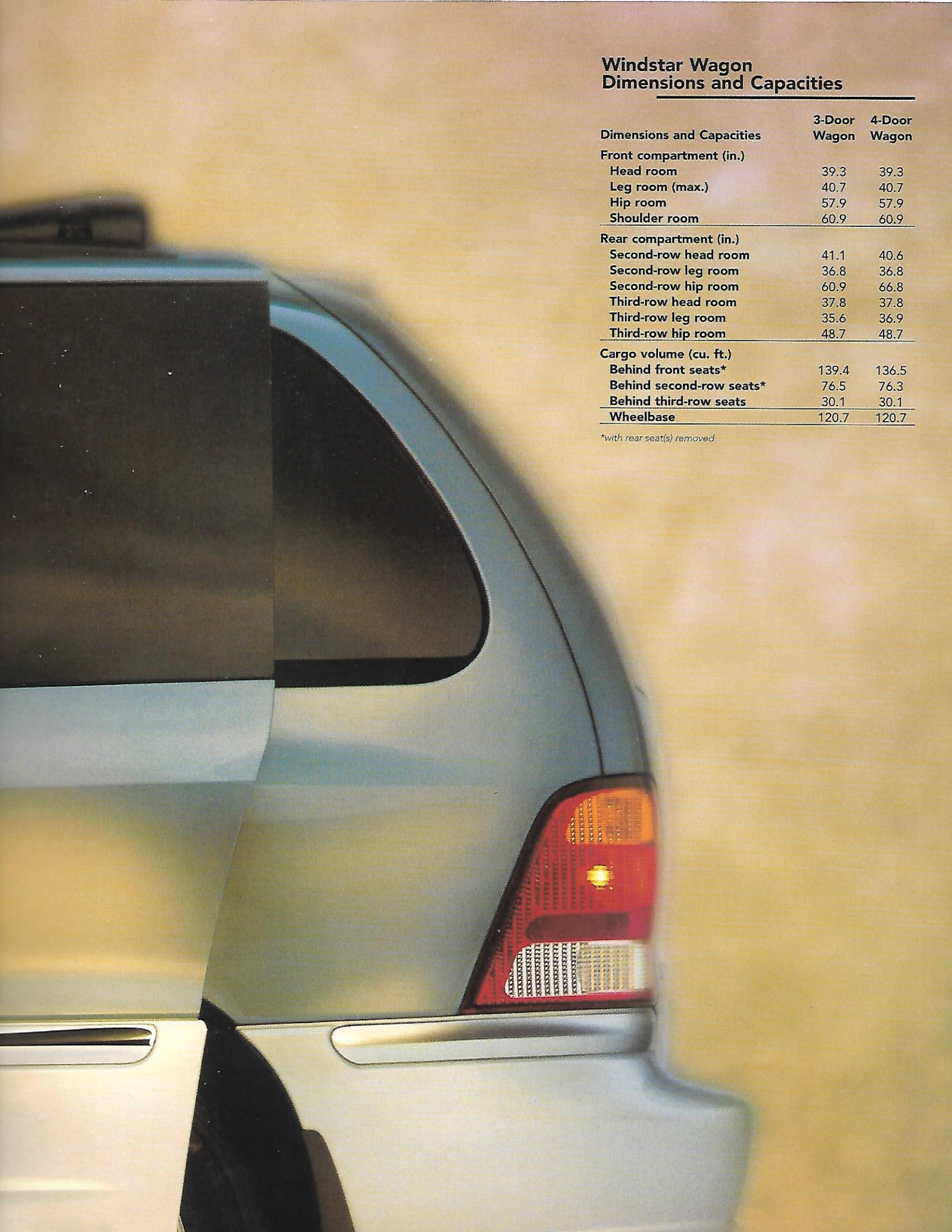

quadruple
five stars safety



AR







Windstar Wagon Dimensions and Capacities

Dimensions and Capacities	3-Door Wagon	4-Door Wagon
Front compartment (in.)		
Head room	39.3	39.3
Leg room (max.)	40.7	40.7
Hip room	57.9	57.9
Shoulder room	60.9	60.9
Rear compartment (in.)		
Second-row head room	41.1	40.6
Second-row leg room	36.8	36.8
Second-row hip room	60.9	66.8
Third-row head room	37.8	37.8
Third-row leg room	35.6	36.9
Third-row hip room	48.7	48.7
Cargo volume (cu. ft.)		
Behind front seats*	139.4	136.5
Behind second-row seats*	76.5	76.3
Behind third-row seats	30.1	30.1
Wheelbase	120.7	120.7

*with rear seat(s) removed



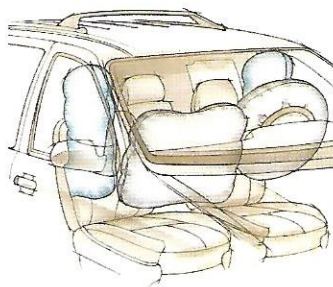
Optional Visteon Rear Seat Entertainment System includes a 6.4-inch screen, VHS player with infrared remote control and Plug/Play capability for video games. Sound comes by way of speakers or two sets of rear seat headphones (included). Late availability.



Equipped with rear seat audio controls, the Personal Audio System, a feature of the optional Premium AM/FM/cassette/single CD stereo, allows simultaneous listening of separate audio inputs. For example, rear passengers can listen through headsets (not included) to a CD, while front passengers listen to a cassette tape.



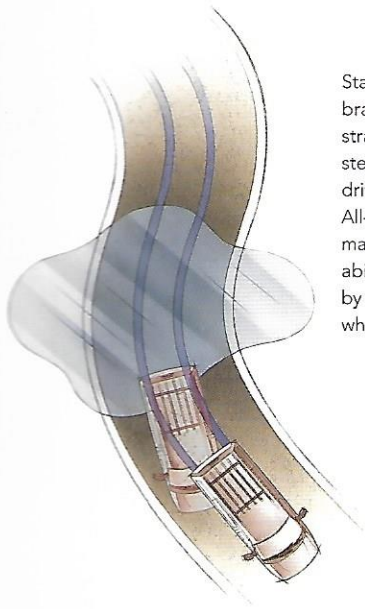
The SecuriLock™ Passive Anti-Theft System "interrogates" your encoded key, preventing would-be thieves from starting the engine.



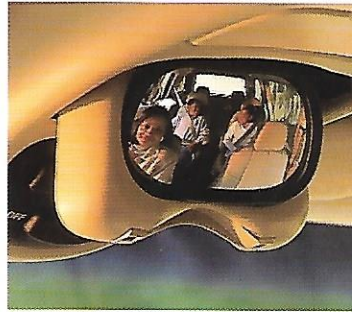
Optional side airbags are designed to enhance protection for the driver and front passenger in certain side collisions* (airbags inflated for illustrative purposes only).

**Always wear your safety belt and secure children in the rear seat.*





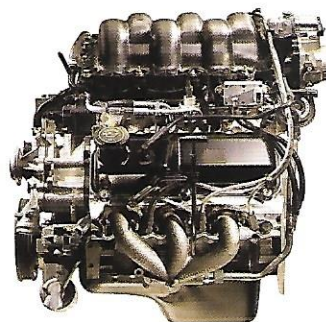
Standard four-wheel anti-lock braking system provides straighter stops and greater steering control under most driving conditions. Optional All-Speed Traction Control helps maintain driveability and steerability on slippery surfaces by detecting and controlling wheel spin.



Optional conversation mirror helps you see passengers in the back rows.



Self-sealing tires let you drive with confidence (available on LX and SE).



Windstar's 200-horsepower, 3.8-liter V6 option helps keep you out of harm's way.

Optional Reverse Sensing System alerts the driver to the presence of objects near the rear of the vehicle when backing up slowly during parking maneuvers. Ultrasonic sensors in the bumper detect obstacles up to 12 feet to the rear. Beeping, with increasing frequency, indicates that the car is closing in on the object. Useful for parallel parking.





Interior Trim



Exterior Paint Colors

Windstar (cloth only)

- Silver Frost** Clearcoat Metallic
- Vibrant White** Clearcoat
- Toreador Red** Clearcoat Metallic
- Black** Clearcoat

Windstar LX, SE 3.8L

(cloth only on LX, cloth or leather on SE)

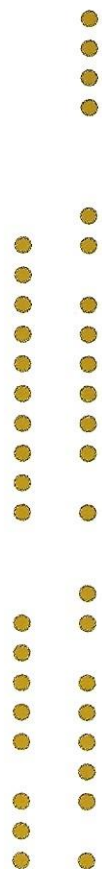
- Silver Frost** Clearcoat Metallic
- Vibrant White** Clearcoat
- Harvest Gold** Clearcoat Metallic
- Spruce Green** Clearcoat Metallic
- Medium Steel Blue** Clearcoat Metallic
- Deep Emerald Green** Clearcoat
- Medium Royal Blue** Clearcoat Metallic
- Toreador Red** Clearcoat Metallic
- Cabernet Red** Clearcoat Metallic
- Chestnut** Clearcoat Metallic
- Black** Clearcoat

Windstar SEL* 3.8L (leather only)

- Silver Frost** Clearcoat Metallic
- Vibrant White** Clearcoat
- Harvest Gold** Clearcoat Metallic
- Spruce Green** Clearcoat Metallic
- Medium Steel Blue** Clearcoat Metallic
- Deep Emerald Green** Clearcoat
- Medium Royal Blue** Clearcoat Metallic
- Cabernet Red** Clearcoat Metallic
- Chestnut** Clearcoat Metallic
- Black** Clearcoat

Medium Parchment

Medium Graphite



*See your dealer for two-tone color combinations.

Windstar & the Environment

Ford helps provide a clean environment before a single Windstar enters the showroom. We do our part by assembling Windstar from a significant amount of recyclable content and by incorporating recycled content materials. An example of our resourcefulness is the Windstar fan, shroud and air-filter cover, which are made with plastics composed in part of recycled nylon carpets. Working with DuPont and Visteon, Ford avoids needlessly discarding "waste" into our nation's landfills.

Windstar continues its responsibility after you leave the showroom. Ford is proud to say that Windstar is classified as a Low Emissions Vehicle (LEV) or better throughout the country. The smog-forming emissions of the LEV Windstar are 41 percent lower than government requirements.

Sesame Street

Ford Motor Company and Sesame Street are proud to be working in partnership to educate families across the country about automotive safety. This strategic alliance is dedicated to spreading the word to young families about the importance of wearing safety belts and safe seating practices. So remember, kids sit in the back, and everyone buckles up!



WINDSTAR Dealer Accessories



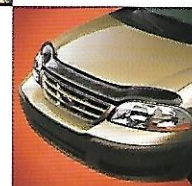
Running Boards with molded child step are designed for function and style.



Framed Luggage Cover protects your roof-mounted luggage from the elements. Zippered side opening makes loading easy.



Rear Spoiler and Trailer Hitch Mount Bike Carrier, which allows for easy loading, unloading and transport.



Aero Hood/Bug Deflector helps protect the hood and windshield from debris.

Roadside Assistance

Every new Ford includes the assurance of a 24-hour emergency Roadside Assistance Program provided during the 3-year/36,000-mile limited warranty period. Ask your Ford Dealer for complete details on this program which includes such services as fuel delivery, tire change, jump start, or even help when you're locked out of your vehicle.

New Vehicle Limited Warranty

Under the New Vehicle Limited Warranty, you receive bumper-to-bumper coverage for 3 years/36,000 miles with no deductible. You also receive corrosion perforation coverage for five years with unlimited mileage and no deductible. Ask your Ford Dealer for a copy of the warranty.

Quality Care

The people who know your vehicle best. The parts designed for it. A service department that understands your needs and respects your time. That's what Quality Care is all about.

Competitive comparisons based on published 1999 competitive data.



Bettering the communities in which we do business is the goal of the Ford Force. We're organized, mobilized and coming to a community near you. Join us.



Visit our website at www.fordvehicles.com