

2008

THE NEW XJ









INTRODUCTION TO THE NEW XJ

**WELCOME TO ONE OF THE MOST RENOWNED MOTORCARS  
IN THE WORLD.**

**THE NEWEST GENERATION JAGUAR XJ.** BLENDING HAND-  
CRAFTSMANSHIP, *innovative* TECHNOLOGY, AND *timeless* DESIGN,  
THIS IS AN AGILE LUXURY SEDAN, BEAUTIFULLY SCULPTURED,  
EXCEPTIONALLY STRONG, AND A JOY TO DRIVE.

**THE EXTERIOR SURFACES** OF ITS ADVANCED MONOCOQUE  
ALUMINUM BODYSHELL ARE RESTYLED FOR A *leaner, more assertive*  
*stance*, AND INTERIOR ENHANCEMENTS BRING EVEN MORE  
COMFORT TO AN ALREADY SUMPTUOUS INTERIOR. POWERED  
BY A 4.2-LITER V8 ENGINE, OPULENTLY EQUIPPED, AND ACHIEVING  
EXTRAORDINARY LEVELS OF QUIET AND REFINEMENT, THIS IS  
THE XJ YOU KNOW—AND NEED TO KNOW MORE ABOUT.



PERFORMANCE

LIGHTER ALUMINUM BODY, EXQUISITE COMFORT,  
INTUITIVE TECHNOLOGY, ELEGANT LINES.

THE XJ'S HANDSOME ALUMINUM SHELL IS 40% LIGHTER THAN  
AN EQUIVALENT STEEL BODY, AND YET IT'S MORE THAN 60% STIFFER  
THAN THE PREVIOUS STEEL XJ BODY, RESULTING IN EXCEPTIONAL  
DRIVING DYNAMICS, LOWER EMISSIONS, SHORTER STOPPING  
DISTANCES, AND DRAMATICALLY IMPROVED FUEL ECONOMY.<sup>1</sup>

<sup>1</sup>EPA estimates 16 MPG city/25 MPG highway.











JAGUAR





PERFORMANCE

**HERE IS AN XJ YOU'VE NEVER SEEN BEFORE.** Exterior styling refinements to the xj's aluminum bodyshell offer promise of the new. A more *intentionally* contemporary look features a slender, athletic demeanor.

**AT THE FRONT, TWO MOLDED MESH PANELS FORM THE GRILLE—** the upper fitted with a body-colored surround and chrome inner bezel, the lower fitted with chrome inner surround. In the rear, a chrome trunk lid plinth and discreet spoiler sound a note of earnestness while chrome lamp surrounds and updated tailpipe finishers add precision detail.

**NEW POWER VENTS,** door sill appliqués, and fender badges *vitalize* the car's side profile and complement the bumper design. Door mirrors are updated, with integrated side directional repeaters. And brake calipers are blacked on the **SUPER V8** and **XJR**, with discreet **JAGUAR** and **R INSIGNIAS**.



PERFORMANCE

**LESS WEIGHT MEANS MORE POWER.** A muscular v8 throbs in the power bay of every xJ, but the fact it has less weight to push than competitors in its class is why the car's performance is so stunning. Two engines are offered:

**THE 4.2-LITER, 32-VALVE, 4-CAM ALUMINUM V8**, developing 300 HP with cam phasing to boost throttle response and reduce emissions. **AND THE R VERSION**, with an **EATON SUPERCHARGER** and liquid intercooling that increases output to 400 HP.







XJR

**STEP ON THE ACCELERATOR OF THE XJR**

AND PREPARE YOURSELF FOR A MOST UNSEDANLIKE EXPERIENCE. THOUGH UNDENIABLY ACCOMPLISHED IN CITY TRAFFIC, THE XJR IS A *joy on the open road.*

**PROPELLED BY A SUPERCHARGED ALUMINUM V8,**

GEARED BY A *crisp, smooth* ZF 6-SPEED AUTOMATIC TRANSMISSION, AND ASSISTED BY AN ARRAY OF TECHNICALLY ASTUTE SUSPENSION AND HANDLING AIDS, THE SPORT IN THIS SEDAN SHOWS. VARIABLE-RATIO, SPEED-SENSITIVE POWER STEERING KEEPS THE CAR BALANCED. INDEPENDENT, DOUBLE-WISHBONE SUSPENSION AND COMPUTER ACTIVE TECHNOLOGY SUSPENSION (CATS) ANALYZE ROAD CONDITIONS AND CURTAIL PITCH AND ROLL. 4-CHANNEL ANTI-LOCK BRAKES STOP THE CAR, TEAMING WITH DYNAMIC STABILITY CONTROL (DSC) TO VARY BRAKING FORCE AT EACH WHEEL AND MANAGE GRIP AND YAW. AND AVAILABLE ADAPTIVE CRUISE CONTROL (ACC) MAINTAINS A SET FOLLOWING INTERVAL FROM VEHICLES AHEAD.





ENERGY ABSORBING  
CRUMPLE ZONES AND  
AN IMPACT-RESISTANT  
SAFETY CELL





HIGH-VISIBILITY INTEGRATED TURN SIGNALS

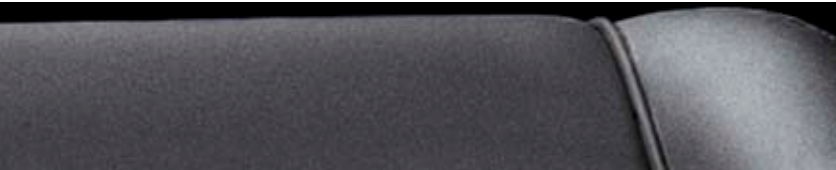
## SAFETY

**THE XJ'S OCCUPANT PROTECTION OFFERS THE ULTIMATE AUTOMOTIVE AMENITY—PEACE OF MIND.**

BUILT INTO ITS RIVET-BONDED ALUMINUM BODY STRUCTURE ARE **CRUMPLE ZONES AND A RIGID IMPACT-RESISTANT SAFETY CELL**. **TEVES 4-WHEEL ANTI-LOCK DISC BRAKES** DELIVER PRECISE STOPPING POWER, AND **EMERGENCY BRAKE ASSIST (EBA)** MEASURES BRAKE PEDAL ACTIVATION IN EMERGENCIES AND INITIATES FULL BRAKING EFFECT. TIRE PRESSURES ARE MONITORED, EVEN THE SPARE!<sup>1</sup> **3-POINT SAFETY BELTS** AND PRETENSIONERS SERVE ALL SEATING POSITIONS. **ADAPTIVE RESTRAINT TECHNOLOGY SYSTEM (A.R.T.S.)** DEPLOYS DRIVER AND PASSENGER AIRBAGS ACCORDING TO A NUMBER OF VARIABLES INCLUDING OCCUPANT POSITION, WEIGHT, AND SAFETY BELT USE. **INFLATABLE SIDE CURTAIN AIRBAGS** DROP FROM ABOVE THE DOORS FOR HEAD PROTECTION WHILE SIDE AIRBAGS DEPLOY FROM THE FRONT SEAT BOLSTERS TO SHIELD THE BODY.

<sup>1</sup>On cars fitted with a full-size spare wheel.





## TECHNOLOGY

**TECHNOLOGY, IN AN XJ, EXISTS FOR GOOD REASON.** THE XJ'S electronics and controls are *intuitive* and *smart*, working with the driver to enhance and simplify. The result is a driving experience that's effortless, comfortable, and highly engaging.

**THROUGHOUT THE CAR, TECHNOLOGY EMPOWERS** rather than overpowers, with amenities such as available **SATELLITE NAVIGATION**, standard **BLUETOOTH® WIRELESS TECHNOLOGY**, and available **TOUCHSCREEN** OR **JAGUAR VOICE CONTROL**. Noise is diminished by engine compartment seals, a double-skin bulkhead structure, and by **JAGUAR'S** acoustic laminated window glass. The xj's interior finishes, as always, testify to **JAGUAR'S** craftsmanship. **ITALIAN SEATING LEATHER** is carefully cut from single hides, ensuring smooth consistency. Veneer facings are mirror-matched for grain and color. The result is a chic opulence that settles a heart racing from the pleasures of the road.

INTERIOR

**PLEASE BE SEATED IN THIS TRULY CULTURED INTERIOR.** *Lavish interior spaces* ARE NOTHING NEW IN THE XJ, BUT THE 2008 XJ'S NEW APPOINTMENTS WILL BRING BROAD SMILES TO DRIVERS' FACES. SEAT CUSHIONING FOR BOTH BASE AND BACK HAS BEEN REDESIGNED TO ADD SUPPORT AND *enhance comfort*. AS YOU WOULD EXPECT, BOTH THE FRONT AND REAR SEATS ARE HEATED, WHILE THE FRONT SEATS HAVE AVAILABLE CLIMATE CONTROL. WITH THIS ENHANCEMENT, HEAT EXCHANGERS IN THE SEAT BASE AND THE BACK DRAW AIR IN. DEPENDING ON THE SETTING, THE AIR IS THEN HEATED OR COOLED, AND PUMPED BACK TO THE SURFACE THROUGH CHANNELS MOLDED INTO THE SEAT FOAMS. PERFORATED LEATHER SEAT COVERS ALLOW THE CONDITIONED AIR TO THEN PASS THROUGH TO THE SEATS' OCCUPANTS.

---

**THERE IS LUXURY IN SPACE.** THE VANDEN PLAS AND SUPER V8 ARE SUPERBLY EQUIPPED EXTENDED-WHEELBASE XJ MODELS, OFFERING ALMOST A METER OF REAR-SEAT LEGROOM. THESE OPULENT CARS FAVOR PASSENGERS WITH SPECIAL AMENITIES, INCLUDING AVAILABLE ELECTRONICALLY ADJUSTABLE REAR SEATS, FOUR-ZONE CLIMATE CONTROL, FOLD-DOWN BUSINESS TRAYS, AND TWIN-SCREEN LCD MULTIMEDIA ENTERTAINMENT. *Comfort is uncompromised.*







**DRIVER'S CONTROLS:** THE XJ'S INTERIOR SYSTEMS ARE REMARKABLY TAILORABLE. PHASE 2 **BLUETOOTH® WIRELESS TECHNOLOGY**. OPTIONAL HD RADIO™ OR SIRIUS® SATELLITE RADIO. 2-ZONE OR 4-ZONE AUTOMATIC CLIMATE CONTROL THAT CONDITIONS AND FILTERS THE AIR. DVD-BASED NAVIGATION WITH 7" TOUCHSCREEN. ALL DESIGNED TO HELP DRIVERS AND PASSENGERS ENJOY VERY PERSONAL LEVELS OF COMFORT.



**LEATHER SEATING SURFACES:** THE XJ'S SEATING IS COVERED IN A LUSH, COMFORTABLE ITALIAN LEATHER, PRECISELY TAILORED AS JAGUAR HAS DONE FOR DECADES.



**REAR-SEAT CONTROL CONSOLE:** A STYLISH BURL WALNUT VENEER CONSOLE CONTROLS A SEPARATE REAR AIR CONDITIONING AND HEATING SYSTEM. THIS IS STANDARD ON THE SUPER V8.

**HEAD RESTRAINT-MOUNTED SCREENS:** MULTIMEDIA ENTERTAINMENT, STANDARD ON THE SUPER V8, INCLUDES A DVD PLAYER, TWIN 6.5" DISPLAY SCREENS INCORPORATED INTO FRONT SEAT HEAD RESTRAINTS AND SWITCH-PACK ACCESS TO THE CAR'S AUDIO SYSTEM OR EXTERNAL DEVICES.

Buying a JAGUAR may be thrilling, *but it's the connection with car and company* during the ownership period following that will impress you most. This is the result of the very *intentional* support of JAGUAR drivers. As one of these favored individuals, here are things you can expect:

**TOTAL CARE**

Seamless support for your new XJ, so you can relax and drive. A combination of vehicle warranty, paint and corrosion protection, complimentary maintenance and JAGUAR ASSISTANCE.

**WARRANTY**

Jaguar Cars offers a comprehensive, 4-year/50,000-mile (80,000-kilometer) New Vehicle Limited Warranty<sup>1</sup> as well as a 6-year/unlimited mileage Corrosion Protection Limited Warranty.

**SERVICE & ASSURANCE**

Complimentary maintenance further enhances your JAGUAR driving experience. Simply bring your JAGUAR to an authorized JAGUAR dealer, and required maintenance will be performed at no charge throughout your first year of ownership or 12,000 miles (16,000 kilometers), whichever comes first.

**JAGUAR AUTO CLUBS**

JAGUAR clubs across Canada, the U.S. and Mexico serve as nerve centers for enthusiasts. With 64 affiliated chapters and over 6,000 members, these independent clubs sponsor wonderful driving tours and social events of all kinds. And if you feel competitive, rally and slalom events are also organized. To find the club nearest you, visit [jcna.com](http://jcna.com) or call 1.888.CLUBJAG.

**JAGUAR ASSISTANCE**

Handled by JAGUAR-trained specialists, this incident management program provides towing service, jump-starts, lockout assistance, gasoline delivery, tire changes and trip routing help, 24/7. Just call 1.800.4.JAGUAR.<sup>2</sup>

**JAGUAR CREDIT**

Available both for individuals and businesses, JAGUAR Credit offers leasing, financing and insurance packages that can be tailored to meet most needs, and will raise customer confidence and satisfaction to levels very nearly as pleasing as the feel of your new vehicle. Ask your dealer for details, or check [JAGUARCREDIT.COM](http://JAGUARCREDIT.COM).

**LOCAL DEALERS**

Your local dealer is JAGUAR's partner both in bringing you thrilling vehicles and in making your buying and ownership experience pleasant. Introduce yourself. Find out what your dealership can do for you.

**JAGUARUSA.COM/JAGUAR.CA**

Visit JAGUAR's official web site to access a dealer locator, car configurator, price lists, model comparisons and enthusiast links to Jaguar Clubs of North America and Jaguar Conservation Trust.

<sup>1</sup>See your Jaguar dealer for complete details.

<sup>2</sup>All elements of Jaguar Assistance are available only while your Jaguar Warranty is in effect.



“#1 NAMEPLATE IN SALES SATISFACTION. THREE YEARS IN A ROW.”<sup>3</sup>

<sup>3</sup>Jaguar received the highest numerical score in the proprietary J.D. Power and Associates 2004–2006 Sales Satisfaction Index Study.<sup>SM</sup> 2006 study based on responses from 42,218 new-vehicle buyers, measuring 36 models, and measures opinions of buyers who registered their vehicle in May 2006. 2006 proprietary study results are based on experiences and perceptions of buyers surveyed in August–September 2006. Your experiences may vary. Visit [jdpower.com](http://jdpower.com)

**IMPORTANT NOTICE**

Jaguar Cars is constantly seeking ways to improve the specification, design and production of its vehicles, and alterations take place continually. While every effort is made to produce up-to-date literature, this brochure should not be regarded as an infallible guide to current specifications, nor does it constitute an offer for the sale of any particular vehicle.





**ENVIRONMENTAL NOTICE**

Jaguar Cars has a vision of being among the world's leading companies in demonstrating progress toward sustainability. We aim to do this by contributing to a better quality of life for communities affected by the design, manufacture, use and disposal of Jaguar cars. We believe that playing a supportive role in the communities in which we operate is a privilege, not an obligation. Corporate citizenship goes to the very heart of our company. It is Jaguar's policy to continually improve its high environmental standards in all areas of business activity.





## TECHNICAL SPECIFICATIONS

	XJ8 / XJ8L / VANDEN PLAS	XJR / SUPER V8		XJ8 / XJ8L / VANDEN PLAS	XJR / SUPER V8
<b>ENGINE</b>			<b>SUSPENSION (cont.)</b>		
Type	90° V8 aluminum-alloy cylinder head/block, DOHC, 4 valves per cylinder	90° V8 aluminum-alloy cylinder head/block, DOHC, 4 valves per cylinder	Rear	Independent aluminum double wishbone with 16 mm anti-roll bar. Self-leveling air springs. Touring-tuned enhanced Computer Active Technology Suspension (eCATS) damping, independent front/rear two-stage damping	Independent aluminum double wishbone with 17 mm (XJR) or 16 mm (Super V8) anti-roll bar. Self-leveling air springs. R Performance-tuned enhanced Computer Active Technology Suspension (eCATS) damping, independent front/rear two-stage damping
Bore	3.39 in. (86.1 mm)	3.39 in. (86.1 mm)	Stability controls	Traction Control (TC) and Dynamic Stability Control (DSC)	Traction Control (TC) and Dynamic Stability Control (DSC)
Stroke	3.56 in. (90.4 mm)	3.56 in. (90.4 mm)	<b>BRAKES</b>		
Displacement	4.2-liter (256.1 cu. in.; 4196 cc)	4.2-liter (256.1 cu. in.; 4196 cc)	System	Teves Mk25 electronically controlled 4-channel Anti-lock Brake System (ABS) with yaw control. Active brake booster. Independent front/rear diagonal-split hydraulic circuits incorporating fluid-loss warning sensor. Electronic Parking Brake (EPB)	Teves Mk25 electronically controlled 4-channel Anti-lock Brake System (ABS) with yaw control. Active brake booster. Independent front/rear diagonal-split hydraulic circuits incorporating fluid-loss warning sensor. Electronic Parking Brake (EPB)
Compression ratio	11.0:1	91:1	Front	Ventilated discs, 12.83 in. x 11.8 in. (326 mm x 30 mm)	R Performance discs, 13.98 in. x 1.26 in. (355 mm x 32 mm)
Induction	Normally aspirated, 3-vane type, continuously variable cam phasing over 48° range	Supercharged, Eaton M112 Roots-type with rotors driven by helical gears, twin air-liquid intercoolers, 13 psi (.9 bar) maximum boost, variable cam phasing, solenoid-operated dual inlet air box	Rear	Ventilated discs, 12.83 in. x .79 in. (326 mm x 20 mm)	R Performance discs, 12.83 in. x .79 in. (326 mm x 20 mm)
Engine control	Electronic throttle	Electronic throttle	<b>WHEELS</b>		
Ignition	Electronic	Electronic	Size and style	18 in. x 8 in. alloy Tucana or 19 in. x 8.5 in. Polaris (XJ8/XJ8L) 19 in. x 8.5 in. alloy Carelia (Vanden Plas)	20 in. x 9 in. alloy Callisto (Super V8) 20 in. x 9 in. alloy Cremona (XJR)
Fuel delivery	Electronic returnless system, single electric fuel pump	Electronic returnless system, dual electric fuel pumps	Spare	Matching full-size alloy	Space saver
Fuel injection	Electronic multiport, Denso 12-hole fuel injectors	Electronic multiport, Denso 12-hole fuel injectors	Tires	All-season 235/50 HR 18 or 255/40 HR 19 (XJ8/XJ8L) All-season 255/40 HR 19 (Vanden Plas)	Performance 255/35 ZR 20
Exhausts	Branched-tuned manifolds	Log-type manifolds	<b>STEERING</b>		
Emissions control	3-way catalysts, exhaust gas recirculation	3-way catalysts, exhaust gas recirculation	Type	Power-assisted, speed-sensitive, variable-ratio rack-and-pinion	Power-assisted, speed-sensitive, variable-ratio rack-and-pinion
Horsepower (SAE)	300 @ 6000 rpm (224 kW)	400 @ 6100 rpm (298 kW)	Turning circle (curb to curb)	38.1 ft. (11.6 m) (XJ8) 39.5 ft. (12.04 m) (XJ8L/Vanden Plas)	38.1 ft. (11.6 m) (XJR) 39.5 ft. (12.04 m) (Super V8)
Torque (lb.-ft.)	310 @ 4100 rpm (420 Nm)	413 @ 3500 rpm (560 Nm)	<b>BODY CONSTRUCTION</b>		
<b>PERFORMANCE</b>			Type	Aluminum monocoque, rivet-bonded, magnesium cross-car beam, steel suspension subframes	Aluminum monocoque, rivet-bonded, magnesium cross-car beam, steel suspension subframes
Maximum speed	121 mph (195 km/h) (electronically limited)	155 mph (249 km/h) (electronically limited)	<b>EXTERIOR DIMENSIONS</b>		
<b>DRIVETRAIN</b>			Length	200.4 in. (5090 mm) (XJ8) 205.3 in. (5215 mm) (XJ8L/Vanden Plas)	200.4 in. (5090 mm) (XJR) 205.3 in. (5215 mm) (Super V8)
Transmission	6-speed automatic, ZF6HP26	6-speed automatic, ZF6HP26	Height	57.0 in. (1448 mm) (XJ8) 57.3 in. (1455 mm) (XJ8L/Vanden Plas)	57.0 in. (1448 mm) (XJR) 57.3 in. (1455 mm) (Super V8)
Final drive	2.87:1	2.87:1	Width with mirrors	83.0 in. (2108 mm)	83.0 in. (2108 mm)
<b>SUSPENSION</b>			Width with mirrors folded	76.5 in. (1943 mm)	76.5 in. (1943 mm)
Front	Independent forged aluminum double wishbone design with 29 mm anti-roll bar. Self-leveling air springs. Touring-tuned enhanced Computer Active Technology Suspension (eCATS) damping, independent front/rear two-stage damping	Independent forged aluminum double wishbone design with 31 mm (XJR) or 29 mm (Super V8) anti-roll bar. Self-leveling air springs. R Performance-tuned (XJR) or Touring-tuned (Super V8) enhanced Computer Active Technology Suspension (eCATS) damping, independent front/rear two-stage damping	Track	Front: 61.3 in. (1557 mm) Rear: 60.9 in. (1547 mm)	Front: 61.3 in. (1557 mm) Rear: 60.9 in. (1547 mm)
XJ8L Dimensions:			Wheelbase	119.4 in. (3033 mm) (XJ8) 124.4 in. (3160 mm) (XJ8L/Vanden Plas)	119.4 in. (3033 mm) (XJR) 124.4 in. (3160 mm) (Super V8)
			Coefficient of drag (Cd)	0.32 (XJ8)	0.32 (XJR)
	124.4 in. (3160 mm)	76.5 in. (1943 mm)	Curb weight	3770 lbs. (1770 kg) (XJ8) 3814 lbs. (1730 kg) (XJ8L) 3871 lbs. (1756 kg) (Vanden Plas)	3946 lbs. (1790 kg) (XJR) 4006 lbs. (1817 kg) (Super V8)
			<b>INTERIOR DIMENSIONS</b>		
	205.3 in. (5215 mm)	83.0 in. (2108 mm)	Headroom	Front: 38.4 in. (975 mm) Rear: 38.6 in. (980 mm)	Front: 38.4 in. (975 mm) Rear: 38.6 in. (980 mm)
			Shoulder room	Front: 58.3 in. (1481 mm) Rear: 58.2 in. (1478 mm)	Front: 58.3 in. (1481 mm) Rear: 58.2 in. (1478 mm)
			Legroom	Front: 43.1 in. (1095 mm) Rear: 38.7 in. (983 mm) (XJ8), 39.3 in. (998 mm) (XJ8L/Vanden Plas)	Front: 43.1 in. (1095 mm) Rear: 38.7 in. (983 mm) (XJR), 39.3 in. (998 mm) (Super V8)
			<b>CAPACITIES</b>		
			Trunk (MVMA)	16.4 cu. ft. (464 L)	16.4 cu. ft. (464 L)
			Fuel	22.5 gal. (85 L)	22.3 gal. (84 L)

## STANDARD FEATURES

	XJ8	XJ8L	VANDEN PLAS	XJR	SUPER V8		XJ8	XJ8L	VANDEN PLAS	XJR	SUPER V8
<b>ENGINE AND CHASSIS</b>						<b>EXTERIOR TRIM AND FEATURES (cont.)</b>					
6-speed ZF automatic transmission with Bosch® Mechatronic control	•	•	•	•	•	Headlamp powerwash	•	•	•	•	•
300-hp V8 engine, normally aspirated	•	•	•			Laminated side-window glass	•	•	•	•	•
400-hp V8 engine, supercharged and intercooled				•	•	Light-Emitting Diode (LED) tail lamps	•	•	•	•	•
Active brake booster	•	•	•	•	•	Light-sensing, auto-on headlamps with adjustable shutoff delay	•	•	•	•	•
Dynamic Stability Control (DSC)	•	•	•	•	•	Lightweight space-saver spare wheel and tire				•	•
Electronic Parking Brake (EPB)	•	•	•	•	•	Mirrors with integrated turn signals	•	•	•	•	•
Power-assisted, speed-sensitive, variable-ratio rack-and-pinion steering	•	•	•	•	•	Moonroof with one-touch tilt/slide	•	•	•	•	•
Self-leveling air suspension with eCATS adaptive damping	•	•	•	•	•	Power-adjustable heated door mirrors	•	•	•	•	•
Steel-braided brake hoses	•	•	•	•	•	Power-folding exterior mirrors			•	•	•
Traction Control (TC)	•	•	•	•	•	Rain-sensing, variable-intermittent dual wipers	•	•	•	•	•
<b>SAFETY AND SECURITY</b>						Remote trunk release	•	•	•	•	•
2-stage unlock to allow driver-only entry	•	•	•	•	•	R Performance disc brakes				•	•
Adaptive Restraint Technology System (A.R.T.S.)	•	•	•	•	•	R Performance–tuned suspension				•	
Anti-lock Brake System (ABS) with active brake booster	•	•	•	•	•	Xenon headlamps	•	•	•	•	•
Belt-minder system to avoid driver oversight	•	•	•	•	•	<b>WHEELS AND TIRES</b>					
Drive-away locking (locks doors upon selecting a gear)	•	•	•	•	•	18" Tucana alloy wheels with 235/50 HR 18 all-season tires	•	•			
Dual-stage front airbags and side, seat-mounted airbags for front occupants <sup>1</sup>	•	•	•	•	•	19" Carelia alloy wheels with 255/40 HR 19 all-season tires			•		
Energy-absorbent seat system	•	•	•	•	•	19" Chrome Sabre wheels with 255/40 ZR 19 tires	○	○	○		
Front and rear safety belt pretensioners for all seat positions	•	•	•	•	•	19" Polaris alloy wheels with 255/40 HR 19 all-season tires	○	○			
Lower Anchors and Tethers for CHildren (LATCH) child-seat-tethered anchorages	•	•	•	•	•	20" Callisto alloy wheels <sup>2</sup> with 255/35 ZR 20 tires			○		•
Remote-activated headlamp operation	•	•	•	•	•	20" Cremona alloy wheels <sup>2</sup> with 255/35 ZR 20 tires				•	
Remote-activated panic alarm	•	•	•	•	•	<b>INTERIOR TRIM AND FEATURES</b>					
Side-impact curtain airbags for front and rear	•	•	•	•	•	3-stage variable cooled front seats	○	○	•	•	•
Tire pressure monitoring system	•	•	•	•	•	3-stage variable heated front and rear seats	•	•	•	•	•
Vehicle security system with remote entry	•	•	•	•	•	4-zone automatic climate control with rear controls			○	○	•
<b>EXTERIOR TRIM AND FEATURES</b>						16-way power front seats with 3-position driver memory	•	•	•	•	•
Aluminum-finish side vents and body-colored mirror caps				•		Alpine® Premium Sound, 320-watt, 12 speakers, single CD			•	•	•
Body-colored grille surround trim with bright mesh insert	•	•	•	•	•	American Walnut satin veneer <sup>3</sup>				○	
Body-colored side vents and mirror caps	•	•				Bluetooth® wireless technology for cell phone <sup>4</sup>	•	•	•	•	•
Body-colored trunk-lid spoiler	•	•	•	•	•	Burl Walnut veneer, hand-inlaid with Peruvian boxwood			•		•
Bright door handles, exhaust tips	•	•	•	•	•	Burl Walnut veneer on overhead console			•	•	•
Bright side vents and mirror caps			•			Burl Walnut veneer trim on doors, center console and fascia	•	•	•	•	•
Bright side-window surrounds	•	•	•	•	•	Carpeted footwell rugs	•	•		•	
Bright trunk-lid trim	•	•	•	•	•	• Standard ○ Optional					
Disc brakes, ventilated, front and rear	•	•	•			<sup>1</sup> Safety belts constitute the primary protection system for drivers and passengers in collisions. The airbag Adaptive Restraint Technology System (A.R.T.S.) is a supplement to the safety belts. Although airbags provide additional protection, airbags alone are not sufficient. Always wear your safety belt and properly secure children under 12 years old in the back seat away from airbags. Never place an infant seat in the front seat.					
Electrochromic (self-dimming) exterior mirrors	•	•	•	•	•	<sup>2</sup> The 20" wheel and tire assembly is of low profile with a bias toward sporting attributes. Wheel and tire assemblies with low tire sidewall height will be more susceptible to impact damage in service.					
Full-size spare tire on matching alloy road wheel	•	•	•			<sup>3</sup> Referred to as Black Walnut on Color and Trim Combinations chart.					
						<sup>4</sup> See your Jaguar dealer for details of approved phone models. The Jaguar leaper hood ornament is available as an accessory item. The XJR is available in Canada only as a special-order vehicle.					

## STANDARD FEATURES

### INTERIOR TRIM AND FEATURES (cont.)

	XJ8	XJ8L	VANDEN PLAS	XJR	SUPER V8
Cruise control with steering wheel controls	•	•	•		
Driver and front passenger sun visors with illuminated vanity mirror	•	•	•	•	•
Dual front and rear cupholders	•	•	•	•	•
Dual-zone automatic climate control	•	•	•	•	•
DVD-based navigation system with 7" color touchscreen	○	○	•	•	•
DVD player, two 6.5" video screens, multimedia switch-pack			○	○	•
Electric control of front passenger seat from rear seat					•
Electric-release glove box with valet lockout control	•	•	•	•	•
Electrically controlled power bench rear seat with adjustment for outboard passengers					•
Electrically heated rear window defroster <sup>1</sup>	•	•	•	•	•
Electrically operated rear-window sunblind			•	•	•
Electrochromic (self-dimming) main driving mirror	•	•	•	•	•
Elm gloss veneer <sup>2,3</sup>	○	○	○		○
External temperature display	•	•	•	•	•
Fixed rear bench seat	•	•	•	•	•
Front Park Control (FPC) <sup>4</sup>	○	○	•	•	•
Global close from console switch or key	•	•	•	•	•
Global open from console switch, remote or key	•	•	•	•	•
HD Digital Radio with multicast <sup>5</sup>	○	○	○	○	○
HomeLink®-compatible three-channel garage-door/entry-gate opener	•	•	•	•	•
Integrated compass in interior driving mirror <sup>6</sup>	•	•			
Jaguar-design analog clock	•	•	•	•	•
Jaguar sound system, 140-watt, 8 speakers, single CD	•	•			
JaguarVoice voice-activated controls <sup>7</sup>					•
Lamb's wool footwell rugs <sup>8</sup>			•	•	•
Leatherette-wrapped dash top			•	•	•
Manually operated rear side-window sunblinds			○	○	•
One-touch up/down power windows	•	•	•	•	•
Particle filtration climate control with odor control	•	•	•	•	•
Piano-black veneer finish on center console and shift gate	•	•	•	•	•
Picnic trays, fold-down from front-seat backrests			•	•	•
Power-folding mirrors from switch and remote			•	•	•
Power-points: 4 points, 12-volt, two with cigar lighters	•	•	•	•	•
Power trunk lid pull-down	•	•	•	•	•
Radar Adaptive Cruise Control (ACC) with Forward Alert feature					•
Rear storage armrest	•	•	•	•	•
Reverse Park Control (RPC)	•	•	•	•	•

R Performance gearshift knob, wrapped in charcoal leather with R badge

R Performance steering wheel, wrapped in charcoal leather with R logo

Satellite radio<sup>9</sup>

Soft-grain leather seating surfaces with piping

Twin-trip computer

Variable speed limiter

Wood and leather heated steering wheel<sup>2</sup>

Wood and leather-trimmed steering wheel<sup>3</sup>

Wood gearshift knob<sup>3</sup>

• Standard ○ Optional

<sup>1</sup> An optional electrically heated windshield is available in Canada only.

<sup>2</sup> A non-heated steering wheel is fitted if optional Elm veneer is selected.

<sup>3</sup> Leather-trimmed steering wheel and gearshift knob fitted if optional Elm veneer is selected.

<sup>4</sup> Reverse Park Control is standard on all XJs.

<sup>5</sup> HD Digital Radio is a trademark of iBiquity Digital Corporation, used under license by the HD Digital Radio Alliance. XJ8 and XJ8L require navigation if HD Digital Radio is selected. Available beginning Oct. 2007 production.

	XJ8	XJ8L	VANDEN PLAS	XJR	SUPER V8
R Performance gearshift knob, wrapped in charcoal leather with R badge				•	
R Performance steering wheel, wrapped in charcoal leather with R logo				•	
Satellite radio <sup>9</sup>	○	○	○	○	○
Soft-grain leather seating surfaces with piping	•	•	•	•	•
Twin-trip computer	•	•	•	•	•
Variable speed limiter	•	•	•	•	•
Wood and leather heated steering wheel <sup>2</sup>	○	○	•		
Wood and leather-trimmed steering wheel <sup>3</sup>	•	•			
Wood gearshift knob <sup>3</sup>	•	•	•		

<sup>6</sup> A compass is included in the touchscreen navigation system, replacing the mirror compass on cars with navigation. Navigation is standard on Vanden Plas, XJR and Super V8.

<sup>7</sup> All other XJ models are pre-wired for JaguarVoice.

<sup>8</sup> Lamb's wool rugs are fitted to passenger footwells only. The driver's footwell receives a premium carpeted footwell rug.

<sup>9</sup> Content provided by SIRIUS® Satellite Radio. Subscription required. XJ8 and XJ8L require navigation if SIRIUS® Satellite Radio is selected. Available beginning Oct. 2007 production.

## ALLOY WHEELS



18" Tucana alloy



19" Carelia alloy



19" Polaris alloy



19" Chrome Sabre



20" Cremona alloy



20" Callisto alloy









JAGUARUSA.COM

JAGUAR.CA