

**Jeep**<sup>®</sup>



## **2007 JEEP COMPASS**

Welcome to an entirely new direction of  
Jeep-enabled self-expression.

For more information, please visit [www.jeep.com/compass](http://www.jeep.com/compass)

Jeep is a registered trademark of DaimlerChrysler Corporation  
©1995-2006 DaimlerChrysler. All Rights Reserved. For important information, go to [jeep.com/privacy](http://jeep.com/privacy)

Page 1 of 7



## COMPASS FEATURES



### FIVE-DOOR VERSATILITY

Jeep® Compass is designed for ultimate utility. That includes getting yourself and your stuff in and out of Compass. Its five-door design provides access to the vehicle's more than 60 cu ft of passenger space.



### YES ESSENTIALS? FABRIC

YES Essentials® stain/odor resistant seat fabric is the solution to nearly every kind of problem, from muddy pets and soccer players, to spilled coffee and greasy French fries. It's exactly what today's non-stop professionals with families and full lives want and need to help protect their vehicle's cloth interior.

YES Essentials is a trademark of Milliken & Co.



### ESP & TRACTION CONTROL

The Compass' standard Electronic Stability Program (ESP)\* helps the driver maintain vehicle directional stability by applying selective braking and engine control. The traction control helps maintain vehicle mobility by applying the brakes, and in some cases closing the throttle.

Always drive carefully, consistent with conditions. Always wear your seat belt and obey traffic laws.

For more information, please visit [www.jeep.com/compass](http://www.jeep.com/compass)



### CRUSH ZONES

Engineered crush zones divert and dissipate impact energy away from the passenger compartment and help minimize injuries in the event of an accident, while side-guard door beams provide additional impact protection.



### ADVANCED MULTISTAGE AIR BAGS

Both Compass models feature standard advanced multistage driver and front-passenger air bags\* with a driver's side knee bolster.

\*Always sit properly in the seat with the seat belt fastened.



### REMOVABLE FLASHLIGHT

Brilliant! Compass features an available bright, dual-purpose removable and rechargeable cargo lamp/flashlight. When mounted in the headliner, the flashlight battery is recharged while the light is used as the cargo lamp. When unsnapped from the headliner, the lamp becomes a convenient portable flashlight.



## COMPASS CAPABILITY



### HANDLING

Enjoy great handling with a four-wheel independent MacPherson strut front suspension and a multilink rear suspension tuned for superior ride, handling, and noise reduction.



### WORLD ENGINE

Jeep® Compass delivers impressive power. Available on Jeep Compass Sport and standard on Limited models is a mighty 2.4-Liter dual overhead cam (DOHC) I-4 engine that produces 172 horsepower and 165 lb-ft. of torque.



### FREEDOM-DRIVE I™ SYSTEM

Compass's state-of-the-art electronic four-wheel-drive system anticipates the need for added traction and responds to wheel-slippage by transferring power between the front and rear wheels. This system also improves vehicle stability in cornering situations by modulation power to the rear wheels.



### TRANSMISSION

When it comes to transmission of power, Compass gives you choices. Choose a five-speed manual, a second-generation continuously variable transaxle (CVT2), or the available CVT2 with AutoStick® (Limited only). The CVT2 uses a steel-push belt and pulleys instead of gears for smooth, efficient driving performance.



### GO THE DISTANCE

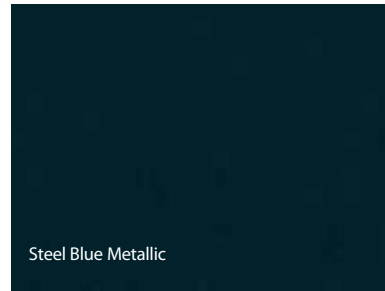
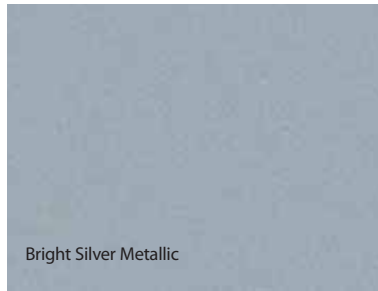
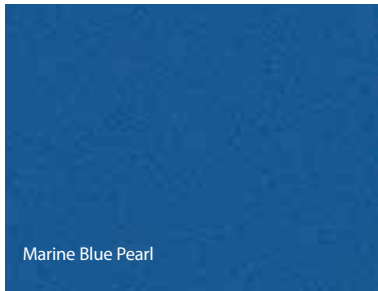
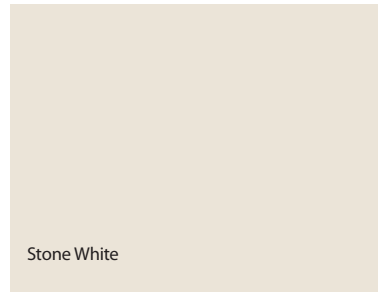
Take advantage of an impressive 26/30 MPG\* (city/highway), available on the Jeep® Compass 4x2 models with manual transmission. Do more. Drive further. Save on fuel.

\*When properly equipped. 2007 EPA estimated miles per gallon.

For more information, please visit [www.jeep.com/compass](http://www.jeep.com/compass)



## COMPASS COLOR OPTIONS



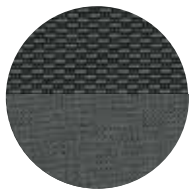
NOTE: Due to occasional printing irregularities, the colors shown may vary slightly from actual vehicle colors.

For more information, please visit [www.jeep.com/compass](http://www.jeep.com/compass)

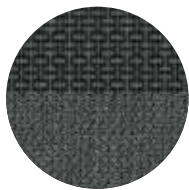
Jeep is a registered trademark of DaimlerChrysler Corporation  
©1995-2006 DaimlerChrysler. All Rights Reserved. For important information, go to [jeep.com/privacy](http://jeep.com/privacy)

## COMPASS COLOR OPTIONS

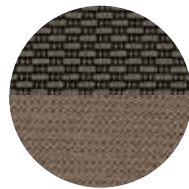
### COMPASS SPORT



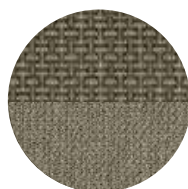
Scout Cloth/Wallace II Cloth Medium Slate Gray | Standard



Hero Premium Cloth/Racine Cloth with YES Essentials<sup>SM</sup> Medium Slate Gray | Optional

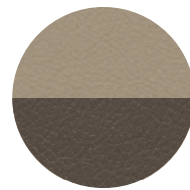


Scout Cloth/Wallace II Cloth Light Pebble Beige | Standard

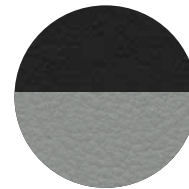


Hero Premium Cloth/Racine Cloth with YES Essentials<sup>SM</sup> Light Pebble Beige | Optional

### COMPASS LIMITED



McKinley Leather Trim/McKinley Vinyl Dark Pebble Beige/Pastel Pebble Beige | Standard



McKinley Leather Trim/McKinley Vinyl Dark Slate Gray/Pastel Slate Gray | Standard

### COMPASS SPORT



17x6.5-inch Cast-Aluminum Sparkle Silver Painted | Standard on Compass Sport

### COMPASS LIMITED



18x7-inch Cast-Aluminum | Standard on Compass Limited



18x7-inch Cast-Aluminum Chrome-Clad | Optional on Compass Limited

For more information, please visit [www.jeep.com/compass](http://www.jeep.com/compass)

Jeep is a registered trademark of DaimlerChrysler Corporation

©1995-2006 DaimlerChrysler. All Rights Reserved. For important information, go to [jeep.com/privacy](http://jeep.com/privacy)



## COMPASS STANDARD AND OPTIONAL FEATURES

	COMPASS SPORT		COMPASS LIMITED
	D	E	F
<b>CAPABILITY</b>			
Brakes — 4-wheel antilock disc	•	•	•
Engine and Axle/Transaxle — 2.4L DOHC 16V dual VVT 4-cylinder with 5-speed manual	25D	25E	25F
— 2.4L DOHC 16V dual VVT 4-cylinder with Continuously Variable Transaxle (CVT2) (includes AutoStick <sup>®</sup> on Limited)	26D	26E	26F
— 2.0L DOHC 16V dual VVT 4-cylinder with Continuously Variable Transaxle (CVT2) (late availability)	O	O	
Engine Block Heater	O	O	O
Four-Wheel Drive — Freedom-Drive I <sup>™</sup> active full-time four-wheel drive with selectable LOCK feature	O	O	O
Front-Wheel Drive (2WD)	•	•	•
Speed Control		O	•
Steering — Power rack-and-pinion	•	•	•
<b>EXTERIOR</b>			
Accents — Body-color grille	•	•	•
— Body-color liftgate appliqué (included in Power Equipment Group)	P	•	•
— Silver front and rear bumper and bodyside inserts			•
Fog Lamps — 2 halogen, located in front bumper	•	•	•
Mirrors — Manual, foldaway	•		
— Power foldaway (included in Power Equipment Group)	P	•	•
Tires — P215/60R17 Firestone Affinity, black sidewall, all-season touring	•	•	
— P215/55R18 Firestone Firehawk, black sidewall, all-season performance			•
— P215/65R17 Goodyear Wrangler SR-A, outline white letter, all-terrain (N/A 2.0L engine)	O	O	
— Spare, full-size (compact comes standard)	O	O	O
Windows — Manual	•		
— Power with driver's one-touch down (included in Power Equipment Group)	P	•	•
<b>INTERIOR</b>			
Air Conditioning <sup>††</sup> — Manual temperature control	O	•	•
Assist handles — Passenger		•	•
Cargo Area — UltraFloor <sup>™</sup> panel, removable and washable	•	•	•
Deep-Tinted Glass — On rear door, cargo area and liftgate windows	O	•	•
Power Sunroof — With express open/close, sunshade and tilt features		O	O
Seat Coverings — Cloth, color-keyed	•	•	
— Cloth, with premium YES Essentials <sup>®</sup> stain resistant, odor resistant, antistatic seat fabric, color-keyed (late availability)	O	O	
— Leather-trimmed, color-keyed			•
Seats — Driver's seat height adjuster		•	•
— Cloth, low-back reclining front buckets with 60/40 flat-folding rear seatback	•	•	
— Rear reclining 60/40 split seats and front-passenger fold-flat seatback		•	•
— Leather-trimmed seating with manual driver's lumbar adjustment lever			•
— Heated front seats		O	•
Smoker's Group	O	O	O

For more information, please visit [www.jeep.com/compass](http://www.jeep.com/compass)



## COMPASS STANDARD AND OPTIONAL FEATURES

	COMPASS SPORT		COMPASS LIMITED
	D	E	F
<b>SAFETY AND SECURITY</b>			
Air Bags <sup>(2)</sup> — Advanced multistage front air bags	•	•	•
— Supplemental side-curtain, deploy during a severe-force side impact	•	•	•
— Supplemental front-seat-mounted side (late availability)	O	O	O
Electronic Stability Program (ESP) <sup>(3)</sup> — Includes Electronic Roll Mitigation, Brake Assist and traction control	•	•	•
Remote Keyless/Illuminated Entry — Included in Power Equipment Group	P	•	•
Sentry Key <sup>®</sup> Antitheft Engine Immobilizer — Theft deterrent system with 2 encoded keys	•	•	•
Tire Pressure Monitoring System — Instrument panel warning indicates which tire is too low or high (included in Driver Convenience Group)		P	P
<b>SOUND SYSTEMS/ENTERTAINMENT</b>			
Radios — AM/FM/CD player with changer controls, and audio input jack for MP3 play capability	•	•	•
— AM/FM/6-disc CD changer with MP3 format capability	O	O	O
— AM/FM/Navigation/6-disc CD changer with GPS display, and MP3 format capability (late availability)			O
— SIRIUS <sup>®</sup> Satellite Radio factory-installed, includes one-year subscription from SIRIUS	O	O	O
Speakers — 4 speakers	•	•	•
— 9-speaker Premium Sound Group with Boston Acoustics <sup>®</sup> speakers and subwoofer with a 458-watt amplifier, swing-down liftgate speakers, and leather-wrapped steering wheel with audio controls (leather-wrapped steering wheel with audio controls not available on D package)	O	O	O
UConnect <sup>®</sup> Hands-Free Communication System — (Requires Driver Convenience Group)			O
<b>PACKAGES</b>			
Driver Convenience Group — Includes auto-dimming interior rearview mirror, compass and temperature gauge, Electronic Vehicle Information Center, HomeLink <sup>®</sup> and Tire Pressure Monitoring Display		O	O
Power Equipment Group — Includes speed-sensitive automatic power locks, power exterior foldaway mirrors, power windows, body-color liftgate appliqué and Remote Keyless/Illuminated Entry (requires air conditioning)	O	•	•
Security and Cargo Convenience Group — Includes security alarm, daytime running lamps and soft tonneau cover		O	O
Trailer Tow Prep Group — Includes engine oil cooler and trailer tow wiring harness (late availability)		O	O

• = Included. P = Available within package noted. O = Optional.

<sup>(1)</sup> There are special cooling requirements for non factory-installed air conditioning. Failure to follow these requirements may invalidate warranty.

<sup>(2)</sup> Certified to the Federal Regulations that allow less forceful front air bags. Always use seat belts. Children 12 and under should always be in a backseat correctly using an infant or child restraint system, or with the seat belt positioned correctly for the child's age and weight.

<sup>(3)</sup> No system, no matter how sophisticated, can repeal the laws of physics or overcome careless driving actions. Performance is limited by available traction, which snow, ice and other conditions can affect. When the ESP warning lamp in the speedometer flashes, the driver needs to use less throttle and adapt speed and driving behavior to prevailing road conditions. Always drive carefully, consistent with conditions. Always wear your seat belt.

For more information, please visit [www.jeep.com/copmass](http://www.jeep.com/copmass)