

2007 LEXUS GX



 LEXUS

2007 LEXUS GX Scaling Mountains

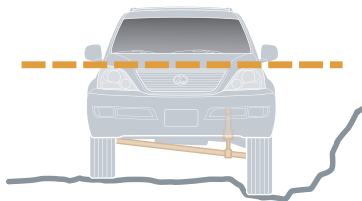
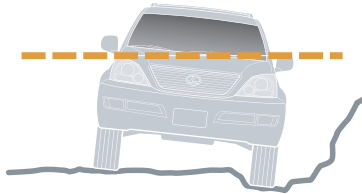


Steep hills always pose a challenge, which is why the GX employs a highly evolved technology called Downhill Assist Control (DAC).¹ When descending steep grades, one touch of a button instructs DAC to administer braking as needed to help maintain an even speed of descent. All you need to do is steer. The GX is also equipped with Hill-start Assist Control (HAC).¹ HAC helps control the GX from rollback during that brief moment when your foot travels from brake to accelerator before beginning an ascent.

¹See page 16 for more information.

2007 LEXUS GX Kinetic Dynamic Suspension System

There are those who view driving as nothing more than a penance between destinations. But a GX driver sees all those miles as an opportunity for adventure, particularly if they find themselves on the road less traveled. Or beyond any road at all. In such cases, the GX, equipped with our available Kinetic Dynamic Suspension System (KDSS), helps give you the freedom—and the technology—to make the most of any terrain. By freeing the stabilizer bar connecting one rear wheel to the other, KDSS allows a separate articulation for each wheel. So one wheel can tackle uneven terrain while the other side of the vehicle remains relatively unaffected. Best of all, it engages automatically, without disturbing the driver for directives of any kind.



Traditional suspension systems are tuned to perform well on paved roads, with the simple goal of ride comfort and control in turns. But

off-road suspensions have different needs—primarily to help maintain contact with the ground on uneven surfaces. The GX, available with a Kinetic Dynamic Suspension System (KDSS), achieves this feat with stabilizer bars that can allow each wheel to move with less restriction. This flexibility helps to prevent vehicle tilt on rocky roads, without sacrificing ride smoothness when the terrain evens out.



2007 LEXUS GX Performance



The GX is equipped with a 4.7-liter V8 engine—the largest offered by Lexus—unleashing 263 horsepower² and 323 lb-ft of torque.² Taming this beast is Variable Valve Timing with intelligence (VVT-i), which continually monitors and adjusts the engine's valves to deliver optimum performance at all times. And a five-speed Electronically Controlled Transmission (ECT) keeps everything running smoothly.

Adaptive Variable Suspension (AVS) offers four settings—from Comfort to Sport—with which you can direct the GX to automatically sense the character of the terrain, monitor your steering and braking, and adjust the suspension accordingly. A true sign of a serious utility vehicle, TORSEN[®] Limited-Slip Center Differential (LSCD)³ offers a variety of benefits, the most important being to help enhance the traction. And Rear Adjustable Height Control (RAHC) permits the GX to be raised 1.6 inches or lowered 1.2 inches for better or easier loading.

^{2,3}See page 16 for more information.

2007 LEXUS GX Interior

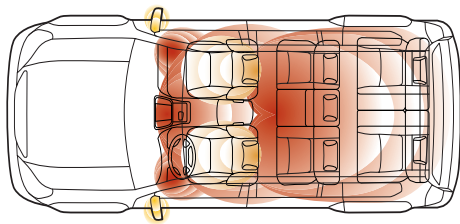


Our available third-row seating is foldable, removable and leather-trimmed, giving you the luxury of transporting eight people in high style.⁴ Passengers will have their own air conditioning and audio systems, the latter complete with a headphone jack. Should you choose to add a Rear-Seat Entertainment System (RSES), your passengers will have their own private cinema, as well.

With the help of Mark Levinson,^{®5} a company known for designing six-figure home-audio systems, we custom-designed a 14-speaker, 240-watt at 0.01% THD⁶ Premium Audio System that features an in-dash, six-disc DVD/CD auto-changer, available in the GX. Though the sound might say “live concert,” you can, of course, stop the music any time you wish.

^{4,5,6}See page 16 for more information.

2007 LEXUS GX Interior (Continued)



Embarking on a great adventure needn't mean leaving your standards behind. In fact, with its vast array of comforts and conveniences, the GX may raise those standards considerably. As you would expect of a Lexus, sumptuous, expertly crafted leather and fine wood accents abound. But our aim is to go beyond simply meeting your expectations. This aim is achieved with such features as heated front seats with variable settings, lumbar support for both driver and front passenger, dual-zone climate control for personalized temperature zones and an interior air filter to put plenty of distance between you and unpleasant dust, pollen and odors.

Front seats are heated with variable settings, and outside mirrors are heated to prevent fogging and maintain clarity

in freezing conditions. The instrument panel displays a temperature gauge, barometer and altimeter to let you know when the weather actually becomes interesting. A compass in the rearview mirror can keep you on track, should the direction you're headed concern you. Additionally, because not all escapades go exactly as planned, the GX always brings along first aid and tool kits. So you might say the GX is prepared for anything. A nice quality in a vehicle driven by those with an adventurous side.

2007 LEXUS GX DVD Navigation System and Bluetooth®



To help keep you on course, the GX is available with the Lexus voice-activated DVD Navigation System.⁷ This GPS-satellite-linked system can direct you to over five million preprogrammed points of interest in the contiguous U.S. and major cities in Canada, displaying full-color maps on a screen in the instrument panel. Use the system's database to find gas stations, ATMs, hotels, airports—it can even recommend, for example, a seafood restaurant. With the addition of a Bluetooth®-compatible phone,⁸ you can call ahead using only your voice to dial.

For even more self-assurance, the GX is available with a backup camera.⁹ This ingenious feature, aided by a tiny lens at the rear of the vehicle, will project a color image of the area to your NAV screen the moment you place the GX in reverse. In this way the GX can provide you with a picture of objects you might otherwise miss.

^{7,8,9} See page 16 for more information.

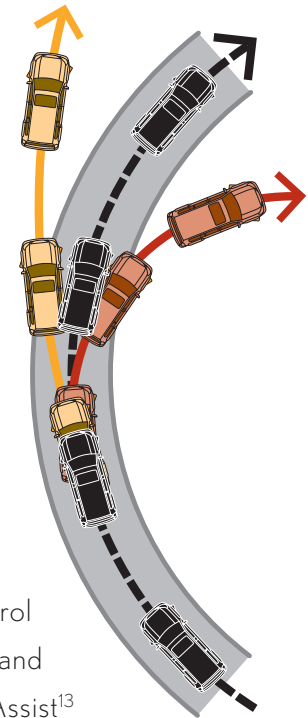
2007 LEXUS GX Safety



The GX is prepared, even when you are not. To begin with, it has been designed to help manage impact energy in a variety of emergency situations, including frontal impacts, offset frontal impacts and side impacts. In such situations, its strong, welded-steel body-and-ladder frame helps maintain the shape and integrity of the chassis and cabin. Scientifically designed, impact-absorbing materials in the structure of the GX will help offset the energy generated by a collision. Furthermore, each door has been reinforced with beams to help provide side-impact protection. Roll-Sensing Curtain Airbags (RSCA)¹⁰ deploy in the event of a severe tilt degree, roll or lateral G-force. (For off-road situations you can temporarily disable the RSCA.) These work in conjunction with the seat-mounted side airbags.¹⁰ The GX also comes standard with a Tire Pressure Monitor System,¹¹ which uses audio and visual clues to alert you if your tire pressure is critically below the optimal range.

^{10,11} See page 16 for more information.

2007 LEXUS GX Safety (Continued)



Vehicle Stability Control (VSC)¹² senses, and helps correct, a loss of traction in turns. Active Traction Control (A-TRAC) directs power to those wheels with the best traction to help control wheelspin on surfaces like mud, sand and ice. Should you require hard braking on a slippery surface, an Anti-lock Braking System (ABS), Brake Assist¹³ and Electronic Brakeforce Distribution (EBD) can be counted on to help you maintain control.

To help control a loss of traction in turns, the GX employs Vehicle Stability Control (VSC).¹² This perceptive technology uses sensors to monitor factors such as wheel speed, steering-wheel angle and your rate of travel in order to detect a skid. Should a loss of traction be detected, VSC instantly determines which action's needed—whether it be the application of brakes to individual wheels or a reduction of throttle—and then automatically implements that action.

^{12,13} See page 16 for more information.

2007 LEXUS GX Ownership Experience

A moment, if you will. It seems so inconsequential: a moment. And yet it's often the small moments, the ones you experience while getting from here to there, that can make your life richer. Fourteen years ago we began with this insight when we set out to build the kind of luxury automobiles that attend to your every need—to help you make the most of every moment. When you drive a Lexus, you drive something unique. You'll feel it in our cars. You'll feel it the instant you walk into our dealerships. And if we've done our job, there's a good chance you'll feel it when you least expect it. It's why we pursue perfection—so you can pursue living.

CUSTOMER SATISFACTION

Your total and complete satisfaction is our highest priority. Which is why you may find our dealerships provide such amenities as offices you can use for business, free pickup and delivery, service loaner vehicles, complimentary car washes, concierge services and even 24-hour emergency Roadside Assistance* for your first four years of ownership.

RESPONSIBLE THINKING

As part of an effort to reduce emissions whenever possible, every Lexus vehicle built since 2004 has been certified as wither a Low-Emission Vehicle (LEV), Ultra-Low Emission Vehicle (ULEV or ULEV II) or Super Ultra-Low Emission Vehicle (SULEV).

VALUE/DEPENDABILITY/QUALITY

Our commitment to build the finest vehicles in the world has not wavered since our inception. Seen in such ways as projected low repair costs and high retained value, our pursuit of perfection has never been stronger.



*Coverage only available in the continental U.S. and Canada. Please see your local Lexus dealer for details on our Roadside Assistance program.

2007 LEXUS GX Options & Accessories



Vehicle shown with available equipment.

OPTION PACKAGES

Navigation System/Mark Levinson® Audio Package

Lexus voice-activated DVD Navigation System⁷ with backup camera⁹ and Bluetooth® technology⁸ ▪ Mark Levinson 14-speaker, 240-watt @ 0.01% THD⁶ Premium Audio System⁵ with in-dash, single-feed, six-disc DVD/CD auto-changer

Sport Package

Kinetic Dynamic Suspension System (KDSS) ▪ Black bird's-eye maple and dark Graphite-finished interior trim ▪ Smoked bezel headlamps and foglamps ▪ 17 x 75-in alloy wheels with dark Graphite finish ▪ Chrome exhaust tip ▪ Dark Graphite-finished roof rack¹⁴ ▪ Tinted backup lamps

OPTIONS AND ACCESSORIES

Third-row seat with rear air conditioning⁴ ▪ Kinetic Dynamic Suspension System (KDSS) ▪ Lexus DVD Rear-Seat Entertainment System (RSES) ▪ Towing Prep Package¹⁵ ▪ Rear spoiler ▪ Roof rack attachment - bike rack ▪ Roof rack attachment - ski/snowboard rack ▪ Lexus Link^{®16} ▪ All-weather floor mats ▪ Cargo net ▪ Cargo mat ▪ Cargo tray ▪ Wireless headphones¹⁷ ▪ Car cover ▪ Sport bumper kit ▪ Stainless-steel exhaust tip ▪ Tow-hitch receiver¹⁵ ▪ Alloy wheels ▪ Wheel locks ▪ XM[®] Satellite Radio¹⁸

4, 5, 6, 7, 8, 9, 14, 15, 16, 17, 18 See page 16 for more information.

2007 LEXUS GX Specifications

BODY, DIMENSIONS

Type	Five-passenger luxury utility vehicle ⁴
Construction	Body-on-frame
Overall Length	188.2 in (4,780 mm)
Width	74.0 in (1,880 mm)
Height	74.6 in (1,895 mm)
Wheelbase	109.8 in (2,790 mm)
Ground Clearance	8.3 in (210 mm)
Approach Angle	30° (RAHC High) 31° (RAHC Normal)
Departure Angle	29° (RAHC High) 25° (RAHC Normal)
Cargo Capacity (max)	77.5 cu ft (2,194 L)*
Curb Weight	4,871 lb (2,209 kg)
Towing Capacity (max)	6,500 lb (2,948 kg) (with tow-hitch receiver) ¹⁵
Fuel-Tank Capacity	23.0 gal (87 L)
Headroom	40.2/40.0/36.5 in (1,020/1,015/917 mm)
Legroom	41.8/36.8/24.9 in (1,060/935/632 mm)
Shoulder Room	57.5/57.4/56.7 in (1,460/1,458/1,440 mm) (front/middle/third row)

ENGINE

Type	90° V8, iron block and heads, certified Ultra-Low Emission Vehicle (ULEV II)
Displacement	4.7 liters (285 cubic inches)
Valvetrain	Four cam, four valves per cylinder, with continuously Variable Valve Timing with intelligence (VVT-i)
Compression Ratio	10.0:1
Horsepower at RPM	263 hp @ 5,400 ²
Torque at RPM	323 lb-ft @ 3,400 ²

PERFORMANCE

0 - 60 MPH Acceleration	8.1 seconds ^{2†}
1/4-Mile Acceleration	16.3 seconds ^{2†}
Top Track Speed	112 mph ^{2†} (electronically limited)
Estimated Fuel Consumption	15/19 mpg (city/highway) [‡]
Aerodynamic Drag Coefficient	0.38
Turning Circle	37.4 ft



*Middle seats folded, third-row seat removed.

[†]These performance capacity figures are for comparison only and were obtained with prototype vehicles by professional drivers using special safety equipment and procedures. Do not attempt.

[‡]EPA-estimated ratings: 15 city/19 highway mpg. Actual mileage may vary.

^{2,4,15} See page 16 for more information.

2007 LEXUS GX Specifications (Continued)

CHASSIS

Vehicle Stability Control (VSC) ¹²	Electronic system that monitors and helps control loss of traction in a turn by using yaw-rate, deceleration, vehicle-speed and steering-wheel-angle sensors. Modulates engine power and applies individual brakes as necessary. Integrates Anti-lock Braking System (ABS), Brake Assist ¹³ and Active Traction Control (A-TRAC)
Suspension	Front: Independent, double-wishbone with coil springs, gas-pressurized shock absorbers and stabilizer bar Rear: Four-link with rigid-axle, air-spring-type shock absorbers and stabilizer bar Adaptive Variable Suspension (AVS) including Rear Air Suspension with Rear Adjustable Height Control (RAHC) and automatic load leveling
Steering	Engine-speed-sensing, power-assisted rack-and-pinion. 3.0 turns, lock to lock
Brakes	Four-wheel power-assisted discs, with four-sensor, four-channel Anti-lock Braking System (ABS), Electronic Brakeforce Distribution (EBD) and Brake Assist ¹³ 13.3-in front, 12.3-in rear ventilated discs
Wheels and Tires ¹⁷	17 x 7.5-in alloy wheels with 265/65SR17 mud- and snow-rated tires. Full-size spare with alloy wheel

DRIVETRAIN

Type	Full-time four-wheel drive with TORSEN® Limited-Slip Center Differential (LSCD) ³ ; (with manual-locking feature), standard Vehicle Stability Control (VSC) ¹² .
Transmission	Five-speed automatic Electronically Controlled Transmission (ECT)
Transfer Case (high/low)	Two-speed, 1.00:1/2.57:1
Final Drive Ratio	3.727:1

^{3, 12, 13, 17} See page 16 for more information.

2007 LEXUS GX Specifications (Continued)

SAFETY

Driver's and front passenger's advanced airbag system (SRS)¹⁰ • Front seat-mounted side airbags (SRS)¹⁰ • Front- and middle-row Roll-Sensing Curtain Airbags (RSCA) (SRS)¹⁰ • Three-point seatbelts for all seating positions, pre-tensioners with force limiters for front seats • Automatic Locking Retractor/ Emergency Locking Retractor (ALR/ELR) seatbelts for all passenger seating positions. Emergency Locking Retractor (ELR) only for driver's seat • Height-adjustable shoulder belt anchors for front and outboard middle-row seats • Child Restraint Seat (CRS) tether anchor brackets for middle row • Four-wheel ventilated power-assisted disc brakes • Four-sensor, four-channel Anti-lock Braking System (ABS) • Vehicle Stability Control (VSC)¹² • Four-wheel Active Traction Control (A-TRAC) • Brake Assist¹³ • Electronic Brakeforce Distribution (EBD) • Lexus four-sensor Tire Pressure Monitor System¹¹ • Full-time four-wheel drive with TORSEN Limited-Slip Center Differential (LSCD)³ • Manual-locking center differential • Downhill Assist Control (DAC)¹ • Hill-start Assist Control (HAC)¹ • Highly rigid body structure with front and rear crumple zones • Side-impact door beams • Impact-dissipating upper interior trim • Collapsible steering column • Daytime running lights • Integrated projector-beam foglamps • Rain-sensing intermittent windshield wipers with mist cycle • Intermittent rear window wiper with washer • Water-repellent front-door glass • Defogger with auto-off timer for rear-window and rear-quarter windows • Vehicle theft-deterrent and engine immobilizer, with in key transponder • Power-adjustable outside mirrors with defoggers and auto-tilt down in reverse • Tool kit • First aid kit

STANDARD LUXURY FEATURES

Golden bird's-eye interior trim • Leather-trimmed interior • Wood- and leather-trimmed steering wheel and shift knob • Steering-wheel-mounted audio controls • Power tilt-and-telescopic steering column with automatic tilt-away • Lexus 11-speaker Premium Sound System with Automatic Sound Levelizer (ASL) and in-dash, six-disc CD auto-changer • Auxiliary iPod®/MP3/Windows Media® Audio (WMA) port • Lexus Rear-Seat Audio System (RSAS) • In-glass antenna with FM-diversity system • 10-way driver's and six-way front passenger's (including lumbar) power seats • Heated front seats • Height-adjustable headrests for all seats • Lexus Memory System for power driver's seat (except lumbar), outside mirrors and steering wheel • Reclining/folding split middle-row seat • Dual-zone automatic climate control with interior air filter and automatic recirculation mode • Power tilt-and-slide moonroof with one-touch open/close and sliding sunshade • Power windows with one-touch auto open/close feature • Remote-linked moonroof and window opening • Retained accessory power for windows and moonroof • Electrochromic (auto-dimming) inside rearview mirror with compass • Cruise control • Power door locks • Rear privacy glass • Electroluminescent instrumentation • Altimeter and barometer • HomeLink® universal transceiver to operate compatible garage, gate, home lighting and home security systems • Lexus Personalized Settings (LPS)¹⁹ to personalize electronic functions • Adaptive Variable Suspension (AVS) • Rear Adjustable Height Control (RAHC) • Body-colored roof rack¹⁴ with CrossBars²⁰ • Automatic on/off projector-beam headlamps with 30-second delay • Multi-function, in-key remote entry system with rolling-code technology • Trip computer • Outside temperature gauge • Tonneau cover (only available on vehicles without third-row seat) • Storage pockets with cargo net integrated into rear door • Carpeted floor mats • Integrated body-color illuminated running boards • Front green-tinted glass •

2007 LEXUS GX Colors

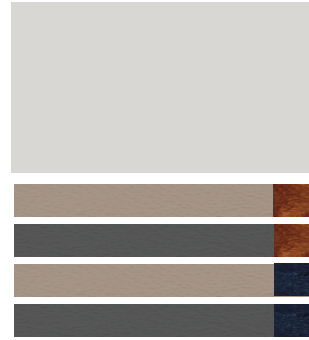
EXTERIOR COLORS



NAUTICAL BLUE METALLIC*
Ivory or Dark Gray Leather



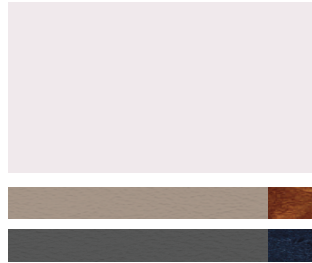
SAVANNAH METALLIC**
Ivory Leather



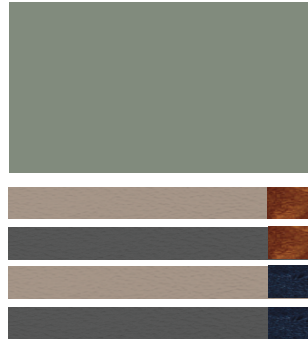
TITANIUM METALLIC
Ivory or Dark Gray Leather



ASH BLUE MICA
Ivory or Dark Gray Leather



BLIZZARD PEARL*
Ivory or Dark Gray Leather

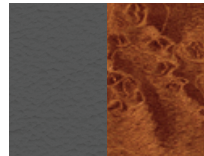


CYPRESS PEARL*
Ivory Leather

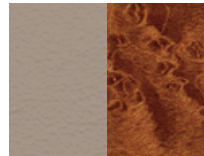


BLACK ONYX
Ivory or Dark Gray Leather

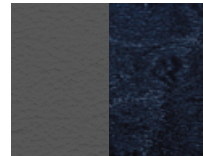
INTERIOR WOOD AND LEATHER



Dark Gray Leather
with Golden Bird's-Eye Maple



Ivory Leather
with Golden Bird's-Eye Maple



Dark Gray Leather
with Black Bird's-Eye Maple†



Ivory Leather
with Black Bird's-Eye Maple†

†Not available with Dark Gray Leather.

*Not available with the Sport Package.

‡Available only with the Sport Package.

See your Lexus dealer for exact vehicle colors.

2007 LEXUS GX Warranty

WARRANTY

Four-year/50,000-mile Lexus Limited Warranty. Six-year/70,000-mile Powertrain Warranty. Six-year/unlimited-mileage Corrosion Perforation Warranty. All warranties with zero deductible. See the GX *Warranty and Services Guide* at your Lexus dealer for details.

FOOTNOTES & DISCLAIMERS

1. DAC is designed to help the driver maintain vehicle control and speed on steep downhill descents. HAC is designed to help minimize backward rolling on steep ascents. Neither system is a substitute for safe driving judgment and practices. Factors including speed, grade, surface conditions and driver input can all affect whether DAC and HAC will be effective in preventing a loss of control. Please see your *Owner's Manual* for further details. **2.** Ratings achieved using the required premium unleaded gasoline with an octane of 91 or higher. If premium fuel is not used, performance will decrease. **3.** TORSEN® is a registered trademark of Zexel Torsen, Inc. **4.** Eight-passenger seating requires available third-row seat. **5.** Mark Levinson is a registered trademark of Harman International Industries, Inc. **6.** Continuous average power, all channels driven, at 0.01% THD; 20-20,000 Hz. **7.** The Navigation System is designed to assist in locating an address or point of interest. Discrepancies may be encountered between the system and your actual location. Road system changes may affect the accuracy of the information provided. Rely on your common sense to decide whether to follow a specified route. Detailed coverage not available in every city or roadway. Periodic updates available at an additional cost. See your *Navigation System Owner's Manual* for further details. **8.** The Bluetooth® technology phones listed on lexus.com have been tested for compatibility with Lexus vehicles. Performance will vary based on phone software version, coverage and your wireless carrier. Phones are warranted by their manufacturer, not Lexus. **9.** The backup camera, available only with the Navigation System, does not provide a comprehensive view of the rear area of the vehicle. You should also look around outside your vehicle and use your mirrors to confirm rearward clearance. Cold weather will limit effectiveness and view may become cloudy. **10.** All the vehicle's airbag systems are Supplemental Restraint Systems (SRS). The driver's and front passenger's airbags are designed to inflate in severe (usually frontal) collisions where the magnitude and duration of the forward deceleration of the vehicle exceed the design threshold level. The side airbags and side curtain airbags are designed to inflate in certain types of severe side-impact collisions. The side curtain airbags also are Roll-Sensing Curtain Airbags (RSCA) and are designed to inflate at a severe tilt degree, roll or lateral G-force. In all other accidents the airbags will not inflate. To decrease the risk of injury from an inflating airbag, always wear seatbelts, sit upright in the middle of the seat as far back as possible from the airbag modules and do not lean against the door. Do not put objects in front of an airbag or around the seatback. Do not use a rearward-facing child seat in any front passenger seat. The force of an inflating airbag SRS may cause serious injury or death. Please see your *Owner's Manual* for further instructions. Vehicle complies with "advanced airbag" requirements of FMVSS 208. **11.** The Lexus Tire Pressure Monitor System alerts the driver when tire pressure is critically low. For optimal tire wear and performance, tire pressure should be checked regularly with a gauge; do not rely solely on the monitor system. Please see your *Owner's Manual* for details. **12.** Lexus Vehicle Stability Control (VSC) is an electronic system designed to help the driver maintain vehicle control under adverse conditions. It is not a substitute for safe driving practices. Factors including speed, road conditions and driver steering input can all affect whether VSC will be effective in preventing a loss of control. Please see your *Owner's Manual* for further details. **13.** Brake Assist is designed to help the driver take full advantage of the benefits of ABS. It is not a substitute for safe driving practices. Braking effectiveness also depends on proper brake-system maintenance and tire and road conditions. **14.** Accessory roof rack with rails not recommended for luggage. **15.** Before towing, confirm your vehicle and trailer are compatible, hooked up properly and that you have any necessary additional equipment. Do not exceed any weight ratings and follow all instructions in your *Owner's Manual*. The maximum you can tow depends on the total weight of any cargo, occupants and available equipment. **16.** Contact with the Lexus Link® Call Center is limited to analog cellular connection availability and reception of GPS satellite signals, so sometimes you may be unable to contact the Call Center or receive emergency support. **17.** Headphones are for passenger use only. Do not use while operating vehicle. **18.** Satellite Radio requires XM compatibility, receiver and monthly service fee. See your Lexus dealer for further details. Reception of the satellite signal may vary depending on location. All fees and programming subject to change. Subscriptions subject to the terms and conditions available at www.xmradio.com. Available only in the 48 contiguous United States. **19.** The Lexus Personalized Settings (LPS) Program is a one-time, complimentary offer for new 2005 model year vehicles and newer purchased or leased from 10/1/04 and beyond, up to 12 months from the date the vehicle is sold to the first retail purchaser or the date it is first used as a demonstrator, lease or company car, whichever occurs first. Please see your Lexus dealer for more information. **20.** Roof rack with CrossBars is not recommended for luggage.

Specifications, features, equipment, technical data, performance figures, options, and color and trim are based upon information available at time of posting, are subject to change without notice, are for mainland U.S.A. vehicles and may differ in the state of Hawaii, Puerto Rico, the U.S. Virgin Islands and in other regions.

Some vehicles shown with optional equipment. Optional equipment listed may not be available separately or in all regions. See your Lexus dealer for details. See your Lexus dealer for details. Lexus reminds you to wear seatbelts, secure children in rear seat, obey all traffic laws and drive responsibly.

For more information, call 800-USA-LEXUS (872-5398). To learn more about your financing options, contact your Lexus dealer or call Lexus Financial Services at 800-874-7050.

All photographs appearing in this e-brochure are the copyrighted property of the photographers contracted by or on behalf of Lexus and may not be reproduced in any way whatsoever without prior written permission from both Lexus and the applicable photographer(s) or their authorized agent(s).

© 2006 Lexus, a Division of Toyota Motor Sales, U.S.A., Inc. All information contained herein applies to U.S. vehicles only.

