



GX

LEXUS | 2013



More than a vehicle, a
SOLUTION.



THE LUXURY OF VERSATILITY

Drivers want the same vehicle to excel at getting to the office, the cabin and the latest night spot. They want smoothness on the commute, and bravn on bumpy back roads. The GX bridges these traditional divides with ease, and complements its capabilities with helpful forward-thinking technology. Available Lexus Enform^{®1,2} with Safety Connect^{®1,3} (one-year trial subscription included) offers live, en route navigation assistance and can request emergency services. An available Wide-view Front and Side Monitor⁴ helps you see around corners at low speeds from its grille-mounted camera, while a second camera under the passenger side-mirror can help with curbside parking.

THE 2013 LEXUS GX. LOADED WITH ANSWERS.

The search for a seven-passenger vehicle is frequently laden with questions about what kind of vehicle it should be: Powerful or efficient? Hard-working or luxurious? Designed for vigorous drives down rustic back roads, or peaceful calm on freeway commutes? To such persistent and important questions, the 2013 GX replies with a firm and resounding Yes. From the bracing performance of its 301-horsepower⁵ V8 engine and agile suspension to its spacious, well-appointed interior and versatile cargo⁶ area, the relentlessly multitasking GX is all the performance you could want, complemented by all the luxury you've come to expect.

Vehicles shown with available equipment.



TAKE THE GREAT ROOM WITH YOU.

The first V8 in its class to feature standard heated and ventilated front seats, the spacious GX surrounds you with refined details like double-stitched premium or available semi-aniline leather trim and auburn bubinga wood accents. Wherever you look, your comfort is the sole purpose of so many features. Heated outboard middle-row seats are available, as well as a heated steering wheel and a smog-sensing three-zone climate-control system. In no time at all, the cabin may become your favorite place to appreciate music, as the available Mark Levinson® Premium Surround Sound System⁷ delivers unparalleled sound with 7.1-channel architecture and 17 precisely tuned and positioned speakers.

REAR-SEAT ENTERTAINMENT SYSTEM

The available dual-screen Rear-Seat Entertainment System⁸ enables two video sources to be viewed at the same time. Using a single remote control, one can be used as a DVD player, for instance, and the other as a game console or audio player. Wireless headphones⁹ are also included.





Capable by **DESIGN.**



KDSS

The ingenious Kinetic Dynamic Suspension System is designed to change with the terrain. By automatically fixing the front and rear stabilizer bars in place when on-road, it helps to minimize body lean while cornering. Off-road, it allows each wheel to move more independently, so the wheel on uneven ground can react while the other wheels are relatively unaffected.

CRAWL CONTROL

Think of it as the off-road equivalent of cruise control. With the press of a button, the available Crawl Control¹⁰ system carefully manages the engine and brakes to help you maintain a slow, consistent speed: up, down and over rugged terrain. And, for added control, you can alternate between five speeds using a toggle switch.

Capability can come in many forms. On rugged terrain, full-time 4WD helps you maintain composure and control. An available electronically modulated rear suspension can be set at one of three heights to help you transition from climbing to cruising. With 329 lb-ft⁵ of peak torque, the 301-horsepower⁵ engine delivers robust power when you need it, yet it has one of the best fuel economy ratings of any V8 in its class.¹¹ To help you handle the rigors of the day-to-day, the GX accommodates your cargo graciously. For easy access to the third row, the curbside second-row seat slides or tumbles forward. A button accessed through the rear door or glass hatch can fold the 50/50-split third-row seats flat instantly. Available auto-leveling adjusts for changes in cargo or passenger loading.

Foresight and preparedness are attractive qualities, particularly in the vehicle you drive. In addition to the innovative camera systems available on the GX, you'll also find a variety of advanced available preemptive safety technology. You'll appreciate the peace of mind offered by active front headrests¹² that can help reduce whiplash injuries in the event of certain types of rear-end collisions. As well as a safety system that surrounds you with 10 airbags¹³—among the most in its class.¹⁴ And, to help address needs that may arise after an impact, available Safety Connect¹³ can automatically request that emergency services be sent to your location if your airbags¹³ deploy.

VISIONARY

in every sense of the word.



PRE-COLLISION SYSTEM¹⁵

By monitoring everything from the direction of your face to the speed of approaching vehicles or objects, this available system is designed to help reduce the likelihood of certain accidents and help reduce impact severity should one occur. For a demonstration, please visit lexus.com/GX/PCS.

LANE DEPARTURE ALERT¹⁶

Using a small front-mounted camera that monitors the lane markings on certain types of roads, this available feature is designed to detect if the GX is beginning to drift out of its lane. If so, it alerts you with an indicator and an audible tone.

BODY AND DIMENSIONS

HEADROOM front/outboard middle/third row 38.0/40.4/35.2 in (965/1,025/895 mm)	SHOULDER ROOM front/middle/third row 55.4/57.3/54.5 in (1,408/1,455/1,384 mm)	HIP ROOM front/middle/third row 56.5/55.2/43.1 in (1,435/1,401/1,096 mm)	LEG ROOM front/middle/third row 41.7/34.1/29.3 in (1,058/868/743 mm)
HEIGHT 74.2 in (1,885 mm) (GX 460) 73.8 in (1,875 mm) (GX 460 Premium)	WIDTH 74.2 in (1,885 mm)	FUEL-TANK CAPACITY 23.0 gal (87 L)	CARGO CAPACITY 64.7 cu ft* (1,833 L) (max)
	WHEELBASE 109.8 in (2,790 mm)	OVERALL LENGTH 189.2 in (4,805 mm)	GROUND CLEARANCE 8.1 in (205 mm)



GENERAL

TYPE
Seven-passenger luxury utility vehicle

TOWING CAPACITY
6,500-lb towing capacity^{17B}

CURB WEIGHT
5,128 lb (2,326 kg) (GX 460)
5,179 lb (2,349 kg) (GX 460 Premium)

PERFORMANCE

0-60 MPH ACCELERATION
7.8 seconds⁵¹⁹

1/4-MILE ACCELERATION
16.6 seconds⁵¹⁹

TOP TRACK SPEED
(electronically limited)
110 mph⁵¹⁹

EPA FUEL ECONOMY ESTIMATES
(city/highway/combined)
15/20/17 mpg²⁰

TURNING CIRCLE
38.1 ft

ENGINE

TYPE
90° V8, aluminum block and heads

DISPLACEMENT
4.6 liters (281 cubic inches)

VALVETRAIN
Four cam, four valves per cylinder, with dual Variable Valve Timing with intelligence (VVT-i)

COMPRESSION RATIO
10.2:1

HORSEPOWER AT RPM
301 hp @ 5,500 rpm⁵

TORQUE AT RPM
329 lb-ft @ 3,500 rpm⁵

EMISSION RATING
Certified Ultra-Low Emission Vehicle (ULEV II)

DRIVETRAIN

TYPE
Full-time four-wheel drive. TORSEN[®] limited-slip center differential²¹ with electronic lock

TRANSMISSION
Six-speed sequential-shift automatic Electronically Controlled Transmission with intelligence (ECT-i)

CHASSIS

VEHICLE STABILITY CONTROL (VSC)²²
Electronic system that monitors and helps control loss of traction in a turn using yaw-rate, deceleration, vehicle-speed and steering-wheel-angle sensors

Modulates engine power and applies individual brakes as necessary. Integrates Anti-lock Braking System (ABS), Brake Assist²³ and Active Traction Control (A-TRAC)

SUSPENSION
Front: Independent, double-wishbone with coil springs, gas-pressurized shock absorbers and stabilizer bar

Rear: Four link with coil springs, gas-pressurized shock absorbers and stabilizer bar (GX 460); four link with air springs, gas-pressurized shock absorbers and stabilizer bar (GX 460 Premium)

STEERING
Power-assisted rack-and-pinion.
3.0 turns, lock to lock

BRAKES

Four-wheel power-assisted discs, with four-sensor, four-channel Anti-lock Braking System (ABS), Electronic Brakeforce Distribution (EBD) and Brake Assist²³
13.3-in ventilated front, 12.3-in ventilated rear discs

WHEELS AND TIRES

18 x 7.5-in six-spoke alloy wheels with 265/60R18 mud- and snow-rated tires²⁴
Full-size spare tire with alloy wheel

WHEELS



18-in six-spoke alloy wheels²⁴
STANDARD GX 460



18-in six-spoke alloy wheels²⁴
with Liquid Graphite finish
STANDARD GX 460 Premium

STANDARD LUXURY FEATURES

LUXURY AND CONVENIENCE

SmartAccess^{25,26} with push-button Start/Stop

Dual-zone automatic climate control with interior air filter (GX 460)

Three-zone automatic climate control with interior air filter, smog sensor and automatic recirculation mode (GX 460 Premium)

Remote keyless entry-linked memory for driver's seat and climate control

Remote-linked window and moonroof opening

Privacy glass and flip-open rear-door glass

SEATING AND TRIM

Auburn bubinga wood interior trim

Leather-trimmed interior

Semi-aniline leather-trimmed interior (GX 460 Premium)

Leather-trimmed steering wheel and shift knob (GX 460)

Wood- and leather-trimmed shift knob and heated steering wheel (GX 460 Premium)

Heated and ventilated front seats

Heated middle-row outboard seats (GX 460 Premium)

Reclining, sliding, 60/40-split middle-row seat with 40/20/40-split seatback

Power fold-flat, 50/50-split third-row seat

COMMUNICATION, AUDIO AND NAVIGATION

Lexus nine-speaker Premium Sound System with Automatic Sound Levelizer

(ASL) and in-dash, single-feed, six-disc CD auto-changer

Bluetooth[®] audio²⁷ profile for wireless integration of compatible music players with in-vehicle audio system

USB audio input for iPod^{®/28}/compatible music player integration with audio system

Multi-information center-console display with integrated backup camera²⁹

SAFETY AND SECURITY FEATURES

ACTIVE SAFETY

Four-wheel Active Traction Control (A-TRAC)

Full-time four-wheel drive with TORSEN[®] limited-slip center differential²¹ (with electronic lock)

Hill-start Assist Control (HAC)³⁰

Downhill Assist Control (DAC)³⁰

Direct Tire Pressure Monitor System³¹

Dual-swivel Adaptive Front Lighting System (AFS)³² (GX 460 Premium)

Smart Stop Technology³³

PASSIVE SAFETY

Driver's and front passenger's dual-stage airbag system (SRS)¹³

Front seat-mounted side airbags (SRS)¹³

Driver's and front passenger's knee airbags (SRS)¹³

Middle-row outboard seat-mounted side airbags (SRS)¹³

Front-, middle- and third-row Roll-Sensing Curtain Airbags (RSCA) (SRS)¹³

Active front headrests¹²

SECURITY

Safety Connect^{1,3} features Automatic Collision Notification, Stolen Vehicle Location, Emergency Assistance Button (SOS) and Enhanced Roadside Assistance.³⁴ Subscription required. One-year trial subscription included

INDIVIDUAL OPTIONS, PACKAGES AND ACCESSORIES*

CONVENIENCE PACKAGE (GX 460)

Electrochromic (auto-dimming), power-folding outside mirrors

Intuitive Parking Assist

COMFORT PLUS PACKAGE (GX 460)

Semi-aniline leather-trimmed interior

Wood- and leather-trimmed steering wheel and shift knob

Heated second-row outboard seats

Three-zone automatic climate control with interior air filter, smog sensor and automatic recirculation mode

NAVIGATION SYSTEM PACKAGE (GX 460)

Navigation System³⁵ including voice command, color LCD display and Enhanced Bluetooth[®] technology³⁶

NavTraffic,^{TM35,37} NavWeather,^{TM35,37} Sports and Stocks from SiriusXM^{35,37} Subscription required. 90-day trial subscription included

Lexus Enform^{1,2} with Safety Connect^{1,3} Subscription required. One-year trial subscription included

NAVIGATION SYSTEM/MARK LEVINSON PREMIUM SURROUND SOUND AUDIO SYSTEM PACKAGE

Includes all Navigation System Package features plus:

Mark Levinson 17-speaker 330-watt, all channels driven, @ less than 0.1% THD, 20-20,000 Hz³⁸ Premium Surround Sound Audio System⁷ with Automatic Sound Levelizer (ASL), 7.1-channel architecture and in-dash, single-feed, six-disc DVD/CD auto-changer

SPORT DESIGN PACKAGE

F SPORT grille

Double-walled stainless steel exhaust tip with chrome finish

Carpet floor mats³⁹ with F SPORT logo

18-in F SPORT cast alloy wheels²⁴ with Liquid Silver high-gloss finish

PRE-COLLISION SYSTEM (PCS) WITH DRIVER ATTENTION MONITOR PACKAGE (GX 460 Premium, special order only)

Pre-Collision System (PCS)¹⁵ with Driver Attention Monitor⁴⁰

Dynamic Radar Cruise Control⁴¹

Lane Departure Alert¹⁶

Intelligent high-beam headlamps⁴²

Crawl Control¹⁰

PRE-COLLISION SYSTEM (PCS) WITH DRIVER ATTENTION MONITOR/ WIDE-VIEW FRONT AND SIDE MONITOR SYSTEM PACKAGE (GX 460 Premium, special order only)

Includes all Navigation System Package features plus:

Wide-view Front and Side Monitor system⁴

INDIVIDUAL OPTIONS

Intuitive Parking Assist

Dual-screen DVD Rear-Seat Entertainment System (RSES)⁸

Three-zone automatic climate control with interior air filter, smog sensor, automatic recirculation mode (GX 460)

High-Intensity Discharge (HID) headlamps with Adaptive Front Lighting System (AFS)³² (GX 460)

Wood- and leather-trimmed steering wheel and shift knob (GX 460)

Cargo-area tonneau cover (GX 460)

ACCESSORIES

All-weather cargo mat

All-weather floor mats³⁹

Alloy wheel locks

Ashtray cup

Car cover

Cargo net - envelope⁴³

Carpet cargo mat

Door edge guards

Exhaust tip

First aid kit

Glass breakage sensor

Key glove

Paint protection film⁴⁴

Remote engine starter²⁶

Roof rack cross bars^{45,46}

Towing equipment:

Ball mount^{17,18}

Towing receiver hitch^{17,18}

Trailer ball^{17,18}

Wireless headphones⁹

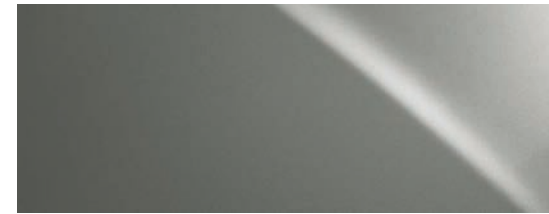
EXTERIOR COLORS



TUNGSTEN PEARL



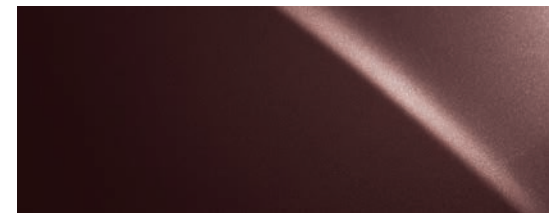
STARFIRE PEARL



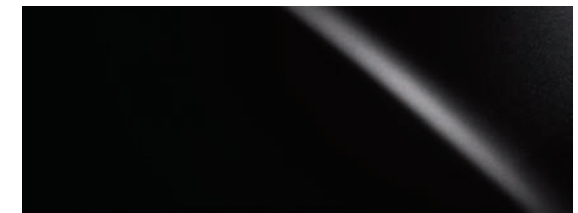
KNIGHT'S ARMOR PEARL



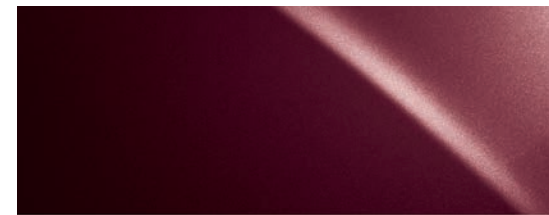
SATIN CASHMERE METALLIC



FIRE AGATE PEARL

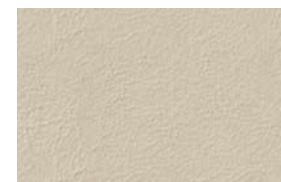


BLACK ONYX

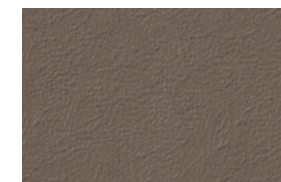


CLARET MICA

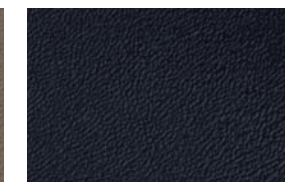
INTERIOR COLORS



ECRU LEATHER



SEPIA LEATHER



BLACK LEATHER



AUBURN BUBINGA

INTERIOR TRIM

COLOR AVAILABILITY

	TUNGSTEN PEARL	STARFIRE PEARL	KNIGHT'S ARMOR PEARL	SATIN CASHMERE METALLIC	FIRE AGATE PEARL	BLACK ONYX	CLARET MICA	AUBURN BUBINGA
ECRU LEATHER	•	•	•	•	•	•	•	•
SEPIA LEATHER		•	•	•	•	•	•	•
BLACK LEATHER	•	•	•		•	•	•	•
INTERIOR COLOR	EXTERIOR COLOR							INTERIOR TRIM

WARRANTY

Four-year/50,000-mile Lexus Limited Warranty. Six-year/70,000-mile Powertrain Warranty. Six-year/unlimited-mileage Corrosion Perforation Warranty. All warranties with zero deductible. See the *GX Warranty and Services Guide* at your Lexus dealer for details.

1. Contact with the Lexus Enform and/or Safety Connect response center is dependent upon the telematics device being in operative condition, cellular connection availability, navigation map data and GPS satellite signal reception, which can limit the ability to reach the response center or receive emergency support. Enrollment and Telematics Subscription Service Agreement required. One-year trial subscription available only with new vehicle purchase of Lexus Enform- and Safety Connect-equipped vehicles. Additional subscription terms available; charges vary by subscription term selected. **2.** Lexus Enform premium services Destination Assist and eDestination will function in the contiguous United States. These services may also function in Hawaii and limited areas of Alaska for vehicles that contain map data for those states. They will not function in Canada or in other countries outside the United States. **3.** The Safety Connect services Automatic Collision Notification, Emergency Assistance and Stolen Vehicle Location will function in the United States, including Hawaii and Alaska, and in Canada. Enhanced Roadside Assistance will function in the United States (except for Hawaii) and in Canada. No Safety Connect services will function outside of the United States in countries other than Canada. **4.** The Wide-view Front and Side Monitor does not provide a comprehensive view of the front and side areas of the vehicle. You should also look around outside your vehicle, and use your mirrors to confirm clearance. Cold weather will limit effectiveness and view may become cloudy. **5.** Ratings achieved using the required premium unleaded gasoline with an octane rating of 91 or higher. If premium fuel is not used, performance will decrease. **6.** Cargo and load capacity limited by weight and distribution. **7.** Mark Levinson is a registered trademark of Harman International Industries, Inc. **8.** A single-disc DVD player is standard on vehicles equipped with the dual-screen Rear-Seat Entertainment System. A separate DVD player or game system utilizing the center console's video/audio inputs is required in order to use the split-screen function. **9.** Headphones are for passenger use only. Do not use while operating vehicle. **10.** The vehicle is designed to meet most off-road driving requirements, but off-roading is inherently dangerous. Abusive use may result in bodily harm or vehicle damage. Lexus encourages responsible operation to protect you, your vehicle and the environment. Seatbelts should be worn at all times. **11.** Based on 2013 GX vs. 2012 competitive EPA MPG ratings of luxury SUV V8-powered vehicles. Actual mileage will vary. **12.** Active front headrests can help reduce the extent of whiplash in certain types of rear-end collisions. **13.** All the airbag (AB) systems are Supplemental Restraint Systems. All ABs (if installed) are designed to inflate only under certain conditions and in certain types of severe collisions: frontal and knee ABs typically inflate in frontal collisions; side and side curtain ABs in side collisions; Roll-Sensing Curtain ABs at a severe tilt degree, roll or lateral G-force. In all other accidents, the ABs will not inflate. To decrease the risk of injury from an inflating AB, always wear seatbelts, sit upright in the middle of the seat as far back as possible and do not lean against the door. Do not put objects in front of an AB or around the seatback. Do not use a rearward-facing child seat in any front passenger seat. The force of an inflating AB may cause serious injury or death. Please see your *Owner's Manual* for further information/warnings. **14.** 2013 GX vs. 2012 competitors based on Luxury Midsize SUVs. **15.** The Pre-Collision System is designed to help reduce the crash speed and damage in certain frontal collisions only. It is not a collision-avoidance system and is not a substitute for safe and attentive driving. System effectiveness depends on many factors, such as speed, driver input and road conditions. Please see your *Owner's Manual* for further information. **16.** Lane Departure Alert is designed to read the lane markers under certain conditions and provide visual and audible alerts when lane departure is detected. It is not a collision-avoidance system or a substitute for safe and attentive driving. Effectiveness depends on many factors. See *Owner's Manual* for more information. **17.** Please consult your Lexus dealer or *Owner's Manual* for towing and load specifications. **18.** Before towing, confirm your vehicle and trailer are compatible, hooked up and loaded properly and that you have any necessary additional equipment. Do not exceed any Weight Ratings and follow all instructions in your *Owner's Manual*. The maximum you can tow depends on the total weight of any cargo, occupants and available equipment. **19.** Performance figures are for comparison only and were obtained with prototype vehicles by professional drivers using special safety equipment and procedures. Do not attempt. **20.** 2013 EPA MPG Estimates. Actual mileage will vary. **21.** TORSEN® is a registered trademark of Zexel Torsen, Inc. **22.** Vehicle Stability Control (VSC) is an electronic system designed to help the driver maintain vehicle control under adverse conditions. It is not a substitute for safe driving practices. Factors including speed, road conditions and driver steering input can all affect whether VSC will be effective in preventing a loss of control. Please see your *Owner's Manual* for further details. **23.** Brake Assist is designed to help the driver take full advantage of the benefits of ABS. It is not a substitute for safe driving practices. Braking effectiveness also depends on proper brake-system maintenance, tire and road conditions. **24.** 18-in performance tires are expected to experience greater tire wear than conventional tires. **25.** The SmartAccess system may interfere with some pacemakers or cardiac defibrillators. If you have one of these medical devices, please talk to your doctor to see if you should deactivate this system. **26.** The engine immobilizer is a state-of-the-art anti-theft system. When you insert your key into the ignition switch or bring a SmartAccess fob into the vehicle, the key transmits an electronic code to the vehicle. The engine will only start if the code in the transponder chip inside the key or SmartAccess fob matches the code in the vehicle's immobilizer. Because the transponder chip is embedded in the key or SmartAccess fob, it can be costly to replace. If you lose a key or SmartAccess fob, your Lexus dealer can help. Alternatively, you can find a qualified independent locksmith to perform high-security key services by consulting your local *Yellow Pages* or by contacting www.aloa.org. **27.** Bluetooth audio device must be enabled with A2DP and AVRCP. **28.** iPod is a registered trademark of Apple Inc. All rights reserved. **29.** The backup camera does not provide a comprehensive view of the rear area of the vehicle. You should also look around outside your vehicle and use your mirrors to confirm rearward clearance. Cold weather may limit effectiveness and view may become cloudy. **30.** DAC is designed to help the driver maintain vehicle control and speed on steep downhill descents. HAC is designed to help minimize backward rolling on steep ascents. Neither system is a substitute for safe driving judgment and practices. Factors including speed, grade, surface conditions and driver input can all affect whether DAC and HAC will be effective in preventing a loss of control. Please see your *Owner's Manual* for further details. **31.** The Tire Pressure Monitor System alerts the driver when tire pressure is critically low. For optimal tire wear and performance, tire pressure should be checked regularly with a gauge; do not rely solely on the monitor system. Please see your *Owner's Manual* for details. **32.** The Adaptive Front Lighting System can help improve vision at night. However, conditions such as a dirty windshield, rapidly changing light conditions or hilly terrain will limit effectiveness so the driver may need to manually change the high beams from on to off. Please see your *Owner's Manual* for details. **33.** Smart Stop Technology operates only in the event of certain simultaneous brake and gas pedal applications. When engaged, the system will reduce engine power to help the brakes bring the vehicle to a stop. Factors including speed, road conditions and driver input can all impact stopping distance. Smart Stop Technology is not a substitute for safe and attentive driving and does not guarantee instant stopping. Please see your *Owner's Manual* for further details. **34.** Coverage only available in the continental U.S. and Canada. Please see your Lexus dealer for details. **35.** Availability and accuracy of the information provided by the Navigation System or any SiriusXM services mentioned (if installed) are dependent upon many factors. Use common sense when relying on information provided. Services not available in every city or roadway. Periodic Navigation updates available at additional cost. Please see your *Navigation System Owner's Manual* or contact SiriusXM for details. **36.** Bluetooth technology phones listed on lexus.com have been tested for compatibility with Lexus vehicles. Performance will vary based on phone software version, coverage and your wireless carrier. Phones are warranted by their manufacturer, not Lexus. The Bluetooth word mark and logos are registered trademarks owned by Bluetooth SIG, Inc. and any use of such marks by Lexus is under license. Other trademarks and trade names are those of their respective owners. **37.** SiriusXM services require a subscription after trial period. Subscriptions governed by SiriusXM Customer Agreement available at siriusxm.com. **If you decide to continue your SiriusXM service at the end of your complimentary trial, the plan you choose will automatically renew and bill at then-current rates unless you call 1-800-967-2346 to cancel.** Fees and programming subject to change. Available only to those at least 18 years of age in the 48 contiguous United States and D.C. **38.** Continuous average power, all channels operating, at less than 0.1% THD; 20-20,000 Hz. **39.** This floor mat was designed specifically for use in your model and model year vehicle and SHOULD NOT be used in any other vehicle. To avoid potential interference with pedal operation, each mat must be secured with retention hooks/clips. Do not install a floor mat on top of an existing floor mat. **40.** The Driver Attention Monitor is designed to alert the driver if a potential hazard is detected ahead and the driver's face appears to be turned away. It is not a collision-avoidance system and is not a substitute for safe and attentive driving. System effectiveness depends on many factors. Please see your *Owner's Manual* for further information. **41.** Dynamic Radar Cruise Control is designed to assist the driver and is not a substitute for safe and attentive driving practices. Please see your *Owner's Manual* for important instructions and cautions. **42.** The intelligent high-beam headlamps can help improve vision at night. However, conditions such as a dirty windshield, rapidly changing light conditions or hilly terrain will limit effectiveness so the driver may need to manually change the high beams from on to off. Please see your *Owner's Manual* for details. **43.** Cargo and load capacity limited by weight and distribution. **44.** Lexus Genuine Accessory Warranty will only apply when the installation is performed by a trained Lexus-approved installer. If the film is installed by anyone else, the Lexus "Parts Only" warranty-12 months-will be applicable instead. **45.** Roof rack with cross bars is not recommended for luggage. **46.** Roof rack capacity is 130 lb. Please see your *Owner's Manual* for details.

*Lexus strives to build vehicles to match customer interest, and thus they typically are built with popular options and option packages. Not all options/packages are available separately, and some may not be available in all regions of the country. See lexus.com for information about options/packages commonly available in your area. If you would prefer a vehicle without any or with different options, contact your dealer to check for current availability or the possibility of placing a special order. Specifications, features, equipment, technical data, performance figures, options, and color and trim are based upon information available at time of printing, are subject to change without notice, are for mainland U.S.A. vehicles only. Some vehicles shown with available equipment. See your Lexus dealer for details. Lexus reminds you to wear seatbelts, secure children in rear seat, obey all traffic laws and drive responsibly. For more information, call 800-USA-LEXUS (872-5398) or visit lexus.com. To learn more about your financing options, contact your Lexus dealer or call Lexus Financial Services at 800-874-7050.

