

2006 LEXUS
IS
350 / 250



The all-new IS—highly energetic,
highly passionate, inspiring exhilaration



Table of Contents

2006 Lexus IS Sedan

Introduction	4
The Look	8
Luxury and Convenience	10
Audio	14
Performance	16
Riding Comfort	18
Strength, Durability and Environmentally Friendly Construction	19
Safety	20
Security	22
Options	23
Competitive Comparisons	
Introduction	26
2006 IS 350 vs. 2006 BMW 330i	28



2006 IS 350 vs. 2006 Infiniti G35	30
2006 IS 350 vs. 2005 Audi A4 3.2	32
2006 IS 350 vs. 2005 Acura TL	34
2006 IS 250 vs. 2006 BMW 325i	36
2006 IS 250 vs. 2006 Infiniti G35	38
2006 IS 250 vs. 2005 Audi A4 2.0 T	40
2006 IS 250 vs. 2005 Acura TL	42
Tables	
2006 IS 350/IS 250 Technical Specifications	44
IS 350 Competitive Specifications at a Glance	48
IS 250 Competitive Specifications at a Glance	52
Footnotes	56
Notes	57

Visit Lexus-eShowroom.com for more Lexus and competitive vehicle information.



2006 Lexus IS Sedan

An Introduction

Passionate Intelligence. Elegant Simplicity.

With its stunning new design, exceptional power and all-wheel drive (AWD) availability, the all-new 2006 IS sport sedan is destined to capture the hearts and minds of a new generation of driving enthusiasts.

Crafted for the young (and young at heart), the all-new IS contrasts the incisive simplicity of powerful, sweeping lines with the intriguing elegance of convex and concave surfacing—integral to the more sculptural design direction that's defining the new breed of Lexus luxury high-performance sedans. A notably wide stance and short front and rear overhangs combine to give the IS its low center of gravity, while conveying speed and agility. In addition, the 2006 IS also features significant increases in length, width and wheelbase over its predecessor. The result is a more spacious and sporty sedan with an edgy appeal that exudes sophistication and the promise of a driving experience like no other.

Inside, the new look continues with a roomier cabin that's superbly complemented by clean lines, intelligently designed displays and an intuitive environment of clean, uncluttered luxury. Door panel surfaces flow seamlessly to the dashboard, where a newly sculpted instrument panel—featuring bright Optitron gauges and smartly integrated metallic trim—flows gently toward the driver.

The new IS family includes four separate models featuring two completely new V6 engines, both with Dual Variable Valve Timing with intelligence and sophisticated fuel injection systems. The rear-wheel drive IS 350 sports a potent 3.5-liter V6 engine delivering 306 horsepower¹ and a muscular 277 lb.-ft. of torque¹, and a new sequential-shift 6-speed automatic transmission with steering wheel mounted paddle shifters. The IS 250 is equipped with a 2.5-liter V6



THE ALL-NEW IS BLENDS DESIGN WITH INTELLIGENCE TO CREATE AN INTUITIVE ENVIRONMENT THAT ONLY LEXUS CAN OFFER.



2006 Lexus IS Sedan continued

An Introduction

engine that boasts 204 horsepower¹ and 185 lb.-ft. of torque¹, with a 6-speed manual transmission and rear-wheel drive, or available 6-speed sequential automatic transmission in either rear- or all-wheel drive configurations.

Both powertrains are complemented by all-new front and rear suspension, with the IS 350's driving dynamics further amplified by a more aggressive version of Vehicle Dynamics Integrated Management (VDIM)². First introduced on the 2006 GS, the IS 350's version of VDIM is designed to maximize driving fun while maintaining control over the elements.

Offering extraordinary performance credentials and outstanding value, the 2006 IS sedan sports an extensive list of standard equipment including SmartAccess with push-button start/stop, plus a 13-speaker sound system with I-POD[®] and MP3 compatibility. Other convenient options newly available on the 2006 IS are 18-inch alloy wheels, the

**SETTING NEW STANDARDS
IN DRIVING DYNAMICS,
ON-BOARD LUXURY AND
ERGONOMIC EXCELLENCE.**



Generation 5 navigation system and the Mark Levinson® Premium Audio System. Further options include rain-sensing windshield wipers and headlamp washers, a power tilt-and-telescopic steering wheel, a three-position memory system and a power rear sunshade. There's also a full complement of safety equipment, including knee airbags (SRS)³ for the driver and front passenger, a front passenger occupant sensor, front and rear outboard pre-tensioners and force limiters, as well as a Tire Pressure Monitoring System⁴. The 2006 IS also offers a variety of available innovations typically found only on more expensive vehicles, such as the Adaptive Front Lighting System (AFS), Lexus Intuitive Parking Assist and the Pre-Collision System (PCS)⁵ with Adaptive Radar Cruise Control.

Poised to set new standards in driving dynamics, on-board luxury and ergonomic excellence, the all-new 2006 IS sport sedan arrives in Lexus dealerships this fall.



The IS Sedan Look

Exuding its own distinctively sporty, yet upscale essence, the all-new IS sport sedan was built for performance, sculpted for elegance and crafted for pure driving enjoyment.

Sophisticated and Sporty Exterior Styling—conveys a high-performance driving image through dynamic contrasting of elevated hood, flared fenders and rounded cabin with the narrowed rear view that accentuates the wide tread and chiseled rear bumper.

Elegant Front Headlamp and Radiator Grille Design—with front bumper-integrated foglamps and airdam.

Aggressive Rear View—accented by high-mount combination lamps.



Sleek Aerodynamic Design—features a flat underbody to optimize air stream beneath the vehicle, an engine undercover to suppress airflow variation and front/rear fairings to smooth airflow around tires, enhancing forward stability at high speeds.

10 Bold Exterior Colors—Glacier Frost Mica, Smokey Granite Mica, Tungsten Pearl, Matador Red Mica, Mystic Gold Metallic, Desert Sage Metallic, Blue Onyx Pearl, Breakwater Blue Metallic, Crystal White and Black Onyx.





LUXURIOUS AMBIENCE ENGINEERED WITH EFFECTIVE FUNCTIONALITY PRESENTS THE IS DRIVER WITH UNFORGETTABLE DRIVING PLEASURE.



Luxury and Convenience

Flowing lines, metallic accents and intelligent controls blend to provide dynamic functionality and luxurious ambience designed to make the IS experience simple, intuitive and eminently pleasurable.

Dynamic Interior Design Offering Superb Functionality and Optimized Space—featuring instrument panel character lines that flow gently toward driver and sweep back to frame the two-pod instrument panel; sharply angled door grips complement vehicle's high-performance image and capabilities.

Available Leather or Perforated Leather Seat Facings—in Cashmere, Sterling and Black, or standard Black fabric-trimmed seats.

Metallic Interior Trim—or available Auburn Bird's-eye Maple trim on center console and doors.

Leather-Trimmed Manual Tilt/Telescopic Steering Wheel—with leather/metal-trimmed shift knob.

SmartAccess with Push-Button Start/Stop—utilizes sensors throughout the vehicle, allowing driver to unlock vehicle by touching door handle (w/SmartAccess fob in pocket or purse) and start vehicle via push-button; SmartAccess fob includes wireless door lock remote functions, trunk and panic buttons; and engine immobilizer.

Steering Wheel-Mounted Multi-Information Display, Audio and Cruise Control Switches—with one-touch activation for available Adaptive Radar Cruise Control, navigation system's voice recognition function and Bluetooth™ features.

Manually Adjustable Driver/Front Passenger Seats—or available 10-way power driver/front passenger seats including power lumbar support.

Dynamic Two-Pod Lexus Optitron Instrumentation—features illumination of tachometer and speedometer according to the engine and vehicle speed set by driver; multi-information display (operable via steering pad-mounted "DISP" switch) features six selectable modes.

Auto-Dimming Electrochromic Inside Mirror—integrates compass and programmable HomeLink® universal transceiver.

Luxury and Convenience continued

Heated Power Outside Mirrors with Bottom-Mounted Puddle Lamps—and available auto-dimming electrochromic, reverse-linked auto tilt-down and memory features.

Rear Window Defogger—operates in conjunction with heater function of outside mirrors and includes a timer function (defogger and heaters automatically turn off after 15 minutes).

Illuminated Entry System—activated when SmartAccess fob is within exterior vehicle detection area or when any door is unlocked using the multi-function remote; includes engine on/off button, interior lights, footwells and scuff plates.

Standard Luxury Features—including front sunvisors and vanity mirrors; power windows with one-touch auto up/down and jam protection; and power door locks with anti lock-out feature and driver's door two-turn unlock system.

Dual-Zone Fully Automatic Climate Control—with independent driver/front passenger temperature control, 12 front air ducts, six rear air ducts and clean air filter, micro dust and pollen filter; additional smog sensor (IS 350).

Vehicle Speed-Sensing Adjustable Interval/Variable Front Windshield Wipers—with washer and drip prevention function; fin-shaped resin cover for entire blade to ensure wiper effectiveness at high speeds.



Integrated Convenience—including manual tilt-and-telescopic steering column; electric fuel door and trunk lid releases mounted on the left side of the instrument panel beneath air vents; quick-turn fuel cap with tether; remote operation and retained accessory power for power windows and available moonroof; first aid and tool kits.

Auto On/Off Headlamp and Taillamp System—comprises headlamps, taillamps, parking lights and license plate lights.

Available Power Rear Sunshade—features reverse-linked auto-down, speed-linked auto-up and manual up/down switch.

Ultraviolet (UV) Ray-Reducing/Heat-Absorbing Green Laminated Windshield Glass—and strength-reinforced green UV window glass (front door glass with water repellent feature).

Lexus Personalized Settings (LPS)—allows Lexus dealers to program certain electronic functions via the Customized Body Electronics System (C-BEST) according to customer preference.

Storage in Center Console—and locking glovebox.

Fold-Out Front Door Storage Pockets with Bottle Cut-Out—and rear seat pass-through.

Cut Pile Carpeting—and carpeted floor mats.



Audio Excellence

Awesome sound quality is a Lexus hallmark and the IS is no exception, with either a standard 13-speaker system or the unequivocal magnificence of the available Mark Levinson® Audio System.

Standard Lexus Premium AM/FM ETR Audio System

- 194 watts of power
- Six-disc in-dash CD auto-changer
- 13 speakers: two front-mounted 25 mm tweeters, two 65 mm front door-mounted speakers, two front door-mounted 160 mm woofers, two rear door-mounted 25 mm tweeters, two 65 mm rear door-mounted speakers, two rear door-mounted 160 mm woofers, one 200 mm sub-woofer mounted on rear deck
- Digital signal processing with Automatic Sound Levelizer (ASL)

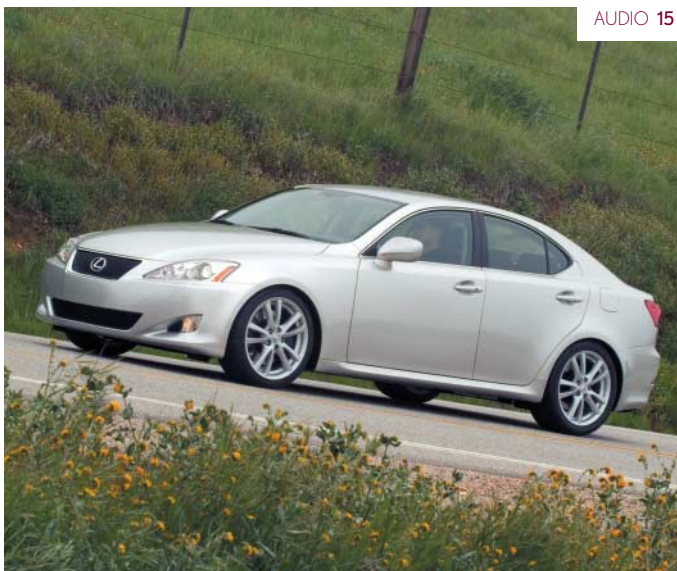
Available Mark Levinson® Premium Audio System

- 300 watts of power at 0.1% Total Harmonic Distortion (THD)
- Six-disc in-dash DVD/CD auto-changer
- 71-channel topography surround processing
- DVD-audio and video with discrete 5.1-channel playback
- 14 speakers: one front-mounted 65 mm center speaker, two front-mounted 25 mm tweeters, two 65 mm front door-mounted mid-range speakers, two front door-mounted 160 mm woofers, two rear door-mounted 25 mm tweeters, two 100 mm rear door-mounted mid-range speakers, two rear deck-mounted 65 mm satellites, one 200 mm sub-woofer mounted on rear deck
- Digital signal processing with Automatic Sound Levelizer (ASL)

I-POD® and MP3 Compatibility—auxiliary jack in console box serves as input terminal.

XM® or Sirius® Satellite Radio Compatibility

FM Diversity Antenna



SOUND THAT ENVIGORATES AND YET SOOTHES
THE SENSES IS THE RESULT OF EVERY
MAGNIFICENT LEXUS AUDIO SYSTEM.



Passionately Sporty Performance

Fulfilling Lexus' most exacting standards of refinement, the 2006 IS features two new powerplants with sophisticated Dual Variable Valve Timing with intelligence and an optimum balance of high performance with low fuel consumption and emissions.

3.5 Liter 24-Valve DOHC V6 Engine (IS 350)

- 306 horsepower @ 6,400 rpm¹
- 277 lb.-ft. of torque @ 4,800 rpm¹
- Dual Variable Valve Timing with intelligence (VVT-i) that continuously optimizes intake and exhaust valve timing in accordance with engine conditions
- Direct injection plus port injection 4-stroke gasoline engine Superior (D-4S) system that provides a homogenous air-fuel mixture by combining direct injection and port injection systems

2.5 Liter 24-Valve DOHC V6 Engine (IS 250)

- 204 horsepower @ 6,400 rpm¹
- 185 lb.-ft. of torque @ 4,800 rpm¹
- Dual Variable Valve Timing with intelligence (VVT-i) that continuously optimizes intake and exhaust valve timing in accordance with engine conditions
- Direct injection 4-stroke gasoline engine (D-4) system that injects pressured fuel into the combustion chamber, precisely controlling the quantity of the high-pressure fuel, improving efficiency
- Acoustic Control Induction System (ACIS)



Lightweight, High-Strength Aluminum Cylinder Block—head covers, pistons, crankshaft bearing, intake manifold and oil pan.

Electronic Throttle Control System with intelligence (ETCS-i)

Ultra Low Emission Vehicle II (ULEV-II) Certification

Front Engine/Rear-Wheel Drive (IS 350/IS 250 RWD); Front Engine/All-Wheel Drive (IS 250 AWD)

Six-Speed Sequential Automatic Electronically Controlled Transmission with intelligence (ECT-i)—and paddle shifters (IS 350 and IS 250 RWD and AWD).

New Compact 6-Speed Manual Transmission (IS 250 RWD)

Aggressive 10-Spoke 17 x 8.0 JJ 17-Inch Aluminum Alloy Wheels with P225/45VR17 Front and P245/45VR17 Rear Tires (IS 350/IS 250 RWD)—and 10-spoke 17 x 8.0 JJ 17-inch aluminum alloy wheels and P225/45VR17 tires (IS 250 AWD).



Legendary Riding Comfort

Silky smooth and serenely quiet, the IS upholds Lexus' impeccable reputation for superb ride quality, courtesy of innovative steering and suspension systems, along with meticulous attention to reducing noise and vibration.

Front Independent Double-Wishbone Coil Spring Suspension—with monotube shock absorbers, high-mount upper arm, stabilizer bar and anti-dive geometry.

Rear Multi-Link Coil Spring Suspension—with monotube shock absorbers, stabilizer bar, two upper and lower arms, toe-control arm, and cast-aluminum axle carriers.

Electronic Power Steering (EPS) System—with speed-sensing rack and pinion steering.

Extensive Use of Noise Absorption and Insulation Materials—optimally located in sunvisors, outer/inner dash, roof headliner, floor and carpet, tunnel, door trim, front pillar garnish, rear quarter garnish, room partition pad, luggage trim and mat.

Front Laminated Acoustic Windshield Glass—features high noise-dampening characteristics to reduce cabin noise.



Strength, Durability and Environmentally Friendly Construction

Extensive reinforcements, a variety of protective measures and environmentally friendly materials combine to enhance the IS sport sedan's solid construction, and help maintain its beauty and durability.

High-Strength Sheet Steel—and braces between rear suspension member and front floor connected by new pipe brace to enhance transverse rigidity.

Extensive Use of Anti-Corrosion Sheet Steel—and anti-corrosion treatments including application of anti-rust wax, sealer and anti-chipping paint to corrosion-prone parts such as the doors and rocker panels; resin rocker moldings enhance durability and chip-resistance of lower side panels.

Recyclable Toyota Super Olefin Polymer (TSOP)—used in front and rear bumpers, lower front grille and rocker molding, overhead console, rear reading light, front and center pillar garnishes, roof inner side garnish, finish plate, door trim pocket and end cover, carpet foot pad and tunnel silencer.

Recycled Sound-Proofing Products—used in the engine rear under-cover and plate, rear floor side member cover, floor silencer and roof silencer; natural fiber materials used in package tray trim and lower door trim.

Front and Rear Crash Boxes—enhance impact absorption in the event of a light collision, reducing front and rear floor side member repairs.



Evolutionary Lexus Safety Technology

Generously equipped with the latest Lexus safety technology, the 2006 IS helps drivers avoid the dangers of the road—and provides protection for occupants in the event of a collision.

Impact-Absorbing Structure—includes strengthening of inner door reinforcements, gap reductions between inner door panel and pillar, side pillar reinforcements, side protection beams and floor cross members helping to minimize deformation of passenger cabin by dispersing impact force throughout the body in the event a collision.

Head Impact Dampening Structure—enables inner panel of roof side rail and pillar to collapse in the event of a collision to help reduce impact on head of occupant.

Driver and Twin-Chamber Front Passenger Advanced Airbags (SRS)³— driver and front passenger knee airbags (SRS)³; front seat-mounted side airbags (SRS)³; front and rear side-curtain airbags (SRS)³; and front passenger occupant sensor prevents front passenger airbag, side airbag and pre-tensioner from deploying if seat is unoccupied or if a child/child safety seat is detected.

Three-Point Seatbelts for All Seating Positions and Front/Rear Outboard Pre-tensioners and Force Limiters—with seatbelt reminder system and rear outboard seatbelt comfort guides to enhance comfort of small occupants.

Automatic Locking Retractor/Emergency Locking Retractor (ALR/ELR) Function—for all seating positions except driver's (ELR only).

Child Restraint System (CRS)—includes three concealed top tether anchors above package tray trim and ISO-FIX lower anchorages behind rear seat cushions.



Headrests for All Seating Positions—with rear center featuring up/down adjustability to ensure driver's field of vision.

Power-Assisted Disc Brakes

- The IS 350 is provided with four-wheel ventilated brake discs and Vehicle Dynamics Integrated Management (VDIM)², delivering comprehensive vehicle movement control, managing and seamlessly integrating four-sensor, four-channel Anti-lock Braking System (ABS), Electronic Brake-force Distribution (EBD), Brake Assist (BA)⁶, Vehicle Stability Control (VSC)⁷ and Traction Control (TRAC).
- The IS 250 is provided with front ventilated/rear solid disc brakes and a hydraulic brake system with four-channel, four-sensor Anti-lock Braking System (ABS), Electronic Brake-force Distribution (EBD), Brake Assist (BA)⁶, Vehicle Stability Control (VSC)⁷ and Traction Control (TRAC).

Hill-Start Assist Control (HAC)—on automatic transmissions only.

Available Adaptive Front Lighting System (AFS)—with High-Intensity Discharge (HID) headlamps and dynamic auto leveling.

Daytime Running Lights (DRL)—make the IS sedan more visible to other drivers.

Tire Pressure Monitoring System⁴—alerts driver of under-inflation via instrument panel warning light.

Phosphorescent Internal Trunk Release

First Aid and Tool Kits

SAFETY IS OF UTMOST IMPORTANCE, AND
THE LATEST SAFETY TECHNOLOGY HAS BEEN
INTEGRATED INTO THE NEW LEXUS IS.

Sophisticated Security & Keyless Entry

IS owners enjoy the convenience and peace of mind of a variety of security measures—including sophisticated remote technology and theft deterrence.

Multi-Function Remote Control—consists of SmartAccess fob and integrated remote illuminated entry, trunk open, power window and available moonroof open/close, vehicle theft deterrent system and panic function; operation signals sent as rolling code.

Engine Immobilizer—prevents the engine from being started without correct ID code from the SmartAccess fob.

Theft Deterrent System—includes illuminated interior light, flashing of hazard lights and headlamps/taillamps and horn actuation; operates in the event an attempt is made to forcibly enter the vehicle, open the engine hood or trunk without a key, or if the battery terminals are disconnected.

Speed-Sensing Automatic Door Lock—and collision door lock release.

Variable Headlamp/Taillamp-Off Delay Feature—allows lights to remain illuminated after locking vehicle according to driver preference.



Dynamic Options to Enhance the IS Experience

For an even more personal and pampering experience, Lexus offers an enticing array of options for buyers to enhance their all-new 2006 IS.

Premium Package (IS 350/IS 250 RWD)

- Leather-trimmed seats
- 10-way power front seats including lumbar support
- Leather console
- Rear armrest storage

Premium Plus Package (IS 350/IS 250 RWD & AWD)

- Perforated leather trim
- 10-way power front seats including lumbar support
- Leather console
- Rear armrest storage
- Heated and ventilated front seats with three-level adjustments
- Auburn Bird's-eye Maple wood interior trim

Performance Luxury Plus Package (IS 350/IS 250 RWD)

- Perforated leather trim
- 10-way power front seats including lumbar support
- Leather console
- Rear armrest storage
- Heated and ventilated front seats with three-level adjustments
- Three-position memory system for front seats, steering wheel and outside mirrors
- Outside mirrors with auto-dimming electrochromic and reverse-linked auto tilt-down features
- Split 5-spoke 18-inch aluminum alloy wheels with P225/40YR18 front and P255/40YR18 rear summer tires
- Sport suspension
- Sport aluminum foot pedals
- Aluminum scuff plates
- Adaptive Front Lighting System (AFS) and High-Intensity Discharge (HID) headlamps with dynamic auto leveling
- Rain-sensing front windshield wipers
- Power tilt-and-telescoping steering wheel

Premium Luxury Plus Package and 17-Inch Wheels (IS 250 AWD)

- Perforated leather trim
- 10-way power front seats including lumbar support
- Leather console
- Rear armrest storage
- Heated and ventilated front seats with three-level adjustments
- Three-position memory system for front seats, steering wheel and outside mirrors
- Outside mirrors with auto-dimming electrochromic and reverse-linked auto tilt-down features
- Illuminated aluminum scuff plates
- Auburn Bird's-eye Maple wood interior trim
- Adaptive Front Lighting System (AFS) and High-Intensity Discharge (HID) headlamps with dynamic auto leveling
- Rain-sensing front windshield wipers
- Power tilt-and-telescoping steering wheel
- Power rear sunshade

Premium Luxury Plus Package and 18-Inch Wheels (IS 350/IS 250 RWD)

- Perforated leather trim
- 10-way power front seats including lumbar support
- Leather console
- Rear armrest storage
- Heated and ventilated front seats with three-level adjustments
- Three-position memory system for front seats, steering wheel and outside mirrors
- Outside mirrors with auto-dimming electrochromic and reverse-linked auto tilt-down features
- Illuminated aluminum scuff plates
- Auburn Bird's-eye Maple wood interior trim
- Adaptive Front Lighting System (AFS) and High-Intensity Discharge (HID) headlamps with dynamic auto leveling
- Rain-sensing front windshield wipers
- Power tilt-and-telescoping steering wheel
- Power rear sunshade

18-Inch Alloy Wheels with Summer Tires (IS 350/IS 250 RWD)

Lexus Intuitive Parking Assist (IS 350/IS 250 RWD & AWD)

- Uses ultrasonic sensors to detect obstacles at the front, rear and corners of the vehicle; informs driver of obstacle detection via the multi-information display, the 7-inch multi-display or by sounding a buzzer

Lexus Voice-Activated DVD Navigation System (IS 350/IS 250 RWD & AWD)

- Generation 5 navigation system with new VGA monitor and touch-screen multi-display, Rear Back-up Camera and Bluetooth™ wireless capability

Lexus Voice-Activated DVD Navigation System/Mark Levinson® Premium Audio Package (IS 350/IS 250 RWD & AWD)

- Generation 5 navigation system with new VGA monitor and touch-screen multi-display, Rear Back-up Camera and Bluetooth™ wireless capability
- Mark Levinson® Premium Audio System includes 300 watts of power, six-disc DVD/CD auto-changer and 14 speakers

Power Tilt/Slide One-Touch Open/Close Moonroof (IS 350/IS 250 RWD & AWD)

- Dark gray-tint glass, sliding sunshade and jam protection

Pre-Collision System (PCS)⁵ with Adaptive Radar Cruise Control (AT Models Only)

- Uses a millimeter-wave radar sensor in front radiator grille to detect obstacles in front of the vehicle and preemptively cinches front seatbelts and initializes Brake Assist (BA)⁶ at "Standby" mode to automatically apply maximum braking force as soon as driver applies brakes
- Adaptive Radar Cruise Control includes vehicle-to-vehicle distance control

Headlamp Washers (IS 350/IS 250 RWD & AWD)

- Requires Adaptive Front Lighting System (AFS) and High-Intensity Discharge Headlamps (HID) with auto leveling

All-Wheel Drive (AWD) (IS 250 AT Only)

Competitive Comparisons

How does the all-new 2006 IS Sedan compare with the competition?

2006 BMW 330i/325i



2006 Infiniti G35



Take a look at its key advantages
over four top competitors.

2005 Audi A4 3.2/2.0 T



2005 Acura TL



IS 350 Key Advantages

2006 Lexus IS 350

Performance/Technology

- Greater engine displacement: 3.5 liters
- More compact V6 engine
- More power: 306 hp @ 6,400 rpm¹
- More torque: 277 lb.-ft. @ 4,800 rpm¹
- Faster 0-60 mph acceleration: 5.6 sec.⁸
- More aerodynamic: 0.28 Cd
- Tighter turning circle: 33.5 ft.
- Vehicle Dynamics Integrated Management (VDIM)²
- Greater fuel capacity: 17.1 gal.
- Wider front/rear tread: 60.4 in./60.4 in.

Luxury & Convenience

- More front legroom: 43.9 in.
- Greater trunk capacity: 13.0 cu. ft.
- Standard SmartAccess with push-button start/stop
- Instrumentation featuring driver-programmable rpm shift light and mph speed warning
- Sound-absorbing sunvisors to enhance cabin quietness
- Available metallic or illuminated (blue) scuff plates
- Standard six-disc in-dash CD changer
- Available 14-speaker Mark Levinson[®] Premium Audio System with six-disc in-dash DVD/CD changer, 300 watts of power at 0.1% Total Harmonic Distortion (THD), 7.1-channel topography surround processing, DVD-Audio & Video with discrete 5.1-channel playback
- Rear Back-up Camera (with available navigation system)
- Available heated and ventilated front seats
- Available three-position memory system for front seats, tilt/telescoping steering wheel and outside mirrors
- Standard auto-dimming electrochromic inside mirror
- Available reverse auto-tilt down feature for both outside mirrors
- Standard HomeLink[®] universal transceiver

Exterior

- 10 exterior color choices
- Standard metallic paint choices
- Laminated acoustic windshield glass

Safety & Security

- Available Pre-Collision System (PCS)⁵ with Adaptive Radar Cruise Control
- Available front and rear Intuitive Parking Assist
- Driver's and front passenger's knee airbags (SRS)³
- Twin-chamber front passenger front airbag (SRS)³
- First aid and tool kits

Limited Warranty & Roadside Assistance

- Superior powertrain coverage: 6-yrs./70,000 miles
- Superior roadside assistance: 4-yrs./unlimited miles

2006 BMW 330i**Performance/Technology**

3.0 liters

I6 engine

255 hp @ 6,600 rpm

220 lb.-ft. @ 2,750 rpm

6.3 sec. (AT), 6.1 sec. (MT)⁹

0.30 Cd

36.1 ft.

Not available

15.9 gal.

59.1 in./59.6 in.

Luxury & Convenience

41.5 in.

12.0 cu. ft.

Standard engine stop/start button and optional Comfort Access keyless entry

Not available

Conventional sunvisors

Standard aluminum/rubber doorsill trim plates

Standard CD player; optional six-disc CD/MP3 changer

No optional audio upgrade

Not available

Optional heated front seats

Optional two-position memory system for driver's seat and outside mirrors

Optional auto-dimming inside mirror

Optional automatic tilt-down of passenger's side mirror only

Optional 3-button universal garage door opener

Exterior

Eight exterior color choices

Optional metallic paint choices

Not available

Safety & Security

Optional Active Cruise Control only

Optional rear Park Distance Control (PDC)

Not available

Conventional front passenger airbag

Not available

Limited Warranty & Roadside Assistance

4-yrs./50,000 miles

4-yrs./50,000 miles

IS 350 Key Advantages

2006 Lexus IS 350

Performance/Technology

Dual Variable Valve Timing with intelligence (Dual VVT-i) varies intake and exhaust timing

More power: 306 hp @ 6,400 rpm¹

More torque: 277 lb.-ft. @ 4,800 rpm¹

6-speed automatic transmission with steering wheel-mounted paddle shifters

Faster 0-60 mph acceleration: 5.6 sec.⁸

Shorter overall length for easier maneuverability: 180.1 in.

Hill-start Assist Control (HAC)

Vehicle Dynamics Integrated Management (VDIM)²

Tighter turning circle: 33.5 ft.

Larger front/rear brakes: 13.15 in./12.2 in.

Wider front/rear tread: 60.4 in./60.4 in.

Luxury & Convenience

Standard SmartAccess with push-button start/stop

Greater trunk capacity: 13.0 cu. ft.

Instrumentation featuring driver-programmable rpm shift light and mph speed warning

Available aluminum sport pedals

Sound-absorbing sunvisors to enhance cabin quietness

Available heated and ventilated front seats

Standard 13-speaker Lexus Premium Sound System with six-disc in-dash CD changer, I-POD[®] and MP3 compatibility with miniplug "AUX" accessory port in rear of center console box

Available 14-speaker Mark Levinson[®] Premium Audio System with six-disc in-dash DVD/CD changer, 300 watts of power at 0.1% Total Harmonic Distortion (THD), 71-channel topography surround processing; DVD-Audio & Video with discrete 5.1-channel playback

Rear Back-up Camera (with available navigation system)

Standard auto-dimming electrochromic inside mirror with compass

Power-adjustable heated outside mirrors with LED puddle lamps; available auto-dimming electrochromic, reverse-linked auto tilt-down and memory features

Three-position memory system includes front seats, outside mirrors and tilt/telescoping steering column

Standard power windows with one-touch up/down and jam protection for all windows

Standard auto on/off headlamps with variable headlamp/taillamp-off delay feature

Standard HomeLink[®] universal transceiver

Standard tool kit

Exterior

10 exterior color choices

Available headlamp washers

Laminated acoustic windshield glass

Safety & Security

Available Pre-Collision System (PCS)⁵ with Adaptive Radar Cruise Control

Available front and rear Intuitive Parking Assist

Available Adaptive Front Lighting System (AFS) and High-Intensity Discharge (HID) headlamps with dynamic auto leveling

Daytime Running Lights (DRL)

Driver's and front passenger's knee airbags (SRS)³

Twin-chamber front passenger front airbag (SRS)³

Rear outboard seat pre-tensioners and force limiters

2006 Infiniti G35**Performance/Technology**

Continuously Variable Valve Timing Control System (CVTCS) varies intake timing only

280 hp @ 6,200 rpm (AT); 298 hp @ 6,400 rpm (MT)

270 lb.-ft. @ 4,800 rpm (AT); 260 lb.-ft. @ 4,800 rpm (MT)

5-speed automatic transmission with manual shift mode on shift gate

6.2 sec. (AT)¹⁰, 5.8 sec. (MT)¹¹

186.9 in.

Not available

Not available

36.0 ft. (AT); 37.4 ft. (MT)

12.6 in./12.1 in.

59.1 in./59.3 in.

Luxury & Convenience

Optional Intelligent Key with push-button start

11.8 cu. ft. (with optional full-size spare tire)

Not available

Not available

Conventional sunvisors

Standard heated front seats only

Standard six-speaker audio system with AM/FM and in-dash, single-feed six-disc CD auto-changer, with MP3 playback capability

Optional seven-speaker Bose[®] premium audio system with 222 watts and in-dash single feed six-disc CD auto-changer

Not available

Optional electrochromic auto-dimming inside mirror

Power heated dual body-colored remote-controlled outside mirrors

Two-position memory system for driver's seat and steering wheel only

Standard one-touch up/down feature for front windows only; optional one-touch up/down for rear windows

Optional auto on/off headlights

Optional HomeLink[®] universal transceiver

Optional emergency roadside kit

Exterior

Eight exterior color choices

Not available

Not available

Safety & Security

Not available

Not available

Standard High-Intensity Discharge (HID) xenon headlights only

Not available

Not available

Conventional front passenger airbag

Not available

IS 350 Key Advantages

2006 Lexus IS 350

Performance/Technology

Greater engine displacement: 3.5 liters

Dual Variable Valve Timing with intelligence (Dual VVT-i) varies intake and exhaust timing

More power: 306 hp @ 6,400 rpm¹

More torque: 277 lb.-ft. @ 4,800 rpm¹

Direct injection 4-stroke gasoline engine Superior (D-4S) system combines direct injection and port injection systems

Faster 0-60 mph acceleration: 5.6 sec.⁸

More aerodynamic: 0.28 Cd

Steering wheel-mounted paddle shifters included with automatic transmission

Hill-start Assist Control (HAC)

Vehicle Dynamics Integrated Management (VDIM)²

Tighter turning circle: 33.5 ft.

Larger front/rear brakes: 13.15 in./12.2 in.

Greater fuel capacity: 17.1 gal.

Luxury & Convenience

Standard SmartAccess with push-button start/stop

More front headroom (w/o moonroof): 39.0 in.

More front legroom: 43.9 in.

Driver-programmable rpm shift light and mph speed warning features for electroluminescent Optitron instrumentation

Available aluminum sport pedals

Available heated and ventilated front seats

Sound-absorbing sunvisors to enhance cabin quietness

Available aluminum and illuminated (blue) scuff plates

Standard 13-speaker Lexus Premium Sound System

Standard I-POD[®] and MP3 compatibility with miniplug "AUX" accessory port in rear of center console box

Available 14-speaker Mark Levinson[®] Premium Audio System with six-disc in-dash DVD/CD changer, 300 watts of power at 0.1% Total Harmonic Distortion (THD), 7.1-channel topography surround processing, DVD-Audio & Video with discrete 5.1-channel playback

Voice activation included with available navigation system

Seven-inch screen included with available navigation system

Rear Back-up Camera and Bluetooth[™] wireless capability (with available navigation system)

Standard auto-dimming electrochromic inside mirror with compass

Power-adjustable heated outside mirrors with LED puddle lamps; available auto-dimming electrochromic, reverse-linked auto tilt-down and memory features

Front passenger's seat and steering column included in available memory system

Standard HomeLink[®] universal transceiver

Exterior

Standard metallic or pearl exterior paint choices

Laminated acoustic windshield glass

Safety & Security

Available Pre-Collision System (PCS)⁵ with Adaptive Radar Cruise Control

Available front and rear Intuitive Parking Assist

Standard Daytime Running Lights (DRL)

Driver's and front passenger's knee airbags (SRS)³

Twin-chamber front passenger front airbag (SRS)³

Four-wheel ventilated brake discs

Standard Tire Pressure Monitoring System⁴

Limited Warranty & Roadside Assistance

Superior powertrain coverage: 6-yrs./70,000 miles

Superior roadside assistance: 4-yrs./unlimited miles

2005 Audi A4 3.2**Performance/Technology**

3.2 liters

Variable intake valve timing

255 hp @ 6,500 rpm

243 lb.-ft. @ 3,250 rpm

FSI Direct Injection

6.6 sec. (AT)⁹

0.31 Cd

Not available

Not available

Not available

36.4 ft.

12.6 in./11.3 in.

16.6 gal.

Luxury & Convenience

Not available

38.4 in.

41.3 in.

Not available

Not available

Optional heated front and rear seats

Not available

Standard protective aluminum door sill trim

Standard 10-speaker Audi Symphony II stereo

MP3 player with optional navigation system

Optional 10-speaker Bose[®] premium sound system with six-disc CD changer and 200 watts of power

Not available

6.25-inch screen with optional navigation system

Not available

Optional automatic-dimming inside mirror with digital compass

Power body-colored outside mirrors with defog feature; puddle lights on doors

Not included in optional memory system

Optional HomeLink[®] remote transmitter**Exterior**

Optional metallic or pearl effect exterior paint choices

Not available

Safety & Security

Not available

Not available

Optional Daytime Running Lights (DRL)

Not available

Conventional front passenger airbag

Ventilated front/rear solid disc brakes

Optional Tire Pressure Monitoring System

Limited Warranty & Roadside Assistance

4-yrs./50,000 miles

4-yrs./50,000 miles

IS 350 Key Advantages

2006 Lexus IS 350

Performance/Technology

Greater engine displacement: 3.5 liters
More sophisticated DOHC engine
Dual Variable Valve Timing with intelligence (Dual VVT-i) varies intake and exhaust timing
Direct injection 4-stroke gasoline engine Superior (D-4S) combines direct injection and port injection systems
More power: 306 hp @ 6,400 rpm¹
More torque: 277 lb.-ft. @ 4,800 rpm¹
6-speed automatic transmission with steering wheel-mounted paddle shifters
Rear-wheel drive (RWD) for sportier handling
Faster 0-60 mph acceleration: 5.6 sec.⁸
More aerodynamic: 0.28 Cd
Hill-start Assist Control (HAC)
Vehicle Dynamics Integrated Management (VDIM)²
Better front/rear weight distribution (%): 52/48
Shorter overall length for easier maneuverability: 180.1 in.
Tighter turning circle: 33.5 ft.
Four-wheel ventilated power disc brakes
Larger front/rear brakes: 13.15 in./12.2 in.

Luxury & Convenience

More front legroom: 43.9 in.
Greater trunk capacity: 13.0 cu. ft.
Available 10-way power front passenger's seat including two-way power lumbar support
Available heated and ventilated front seats
Sound-absorbing sunvisors to enhance cabin quietness
Standard SmartAccess with push-button start/stop
Instrumentation featuring driver-programmable rpm shift light and mph speed warning
Standard 13-speaker Lexus Premium Sound System
Available 14-speaker Mark Levinson[®] Premium Audio System
I-POD[®] and MP3 compatibility with miniplug "AUX" accessory port in rear of center console box
Rear Back-up Camera (with available navigation system)
Available aluminum sport pedals
Available aluminum and illuminated (blue) scuff plates
Standard puddle lamps and available auto-dimming electrochromic feature for outside mirrors
Available power rear sunshade with reverse-linked auto-down, speed-linked auto-up and manual up/down switch
Available three-position memory includes driver's and front passenger's seats and tilt/telescoping position of steering column
Standard power windows with one-touch up/down and jam protection for all windows
Available rain-sensing windshield wipers

Exterior

10 exterior color choices
Available headlamp washers

Safety & Security

Available Pre-Collision System (PCS)⁵ with Adaptive Radar Cruise Control
Available front and rear Intuitive Parking Assist
Available Adaptive Front Lighting System (AFS) and High-Intensity Discharge (HID) headlamps with dynamic auto leveling
Driver's and front passenger's knee airbags (SRS)³
Twin-chamber front passenger front airbag (SRS)³
Daytime Running Lights (DRL)
Rear outboard pre-tensioners and force limiters
Headrests at all three rear seating positions with rear center featuring up/down adjustability to ensure driver's field of vision
Tire Pressure Monitoring System⁴
First aid and tool kits

Limited Warranties & Roadside Assistance

Superior powertrain coverage: 6-yrs./70,000 miles
Superior corrosion coverage: 6-yrs./unlimited miles
Superior roadside assistance: 4-yrs./unlimited miles

2005 Acura TL**Performance/Technology**

3.2 liters
SOHC engine
VTEC™ varies intake timing only
Programmed Fuel Injection (PGM-FI) system
270 hp @ 6,200 rpm
238 lb.-ft. @ 5,000 rpm
5-speed automatic transmission with shift gate-mounted sequential SportShift™ feature
Front-wheel drive (FWD)
6.3 sec. (MT) ²
0.29 Cd
Not available
Not available
61/39 (AT); 60/40 (MT)
189.3 in.
39.7 ft.
Front ventilated/rear solid power disc brakes
11.8 in./11.1 in. (AT)

Luxury & Convenience

42.8 in.
12.5 cu. ft. (12.3 cu. ft. w/navigation system)
Standard four-way power front passenger's seat only
Standard heated front seats
Conventional sunvisors
Not available
Not available
Standard eight-speaker sound system
No optional audio upgrade
Not available
Not available
Not available
Not available
Not available
Not available
Standard two-position memory system for driver's seat (steering column position not available)
Power windows with driver's and front passenger's auto-up/down only
Not available

Exterior

Eight exterior color choices
Not available

Safety & Security

Not available
Optional rear area sensor only
Standard Bi-Xenon High-Intensity Discharge (HID) headlights only
Not available
Conventional front passenger airbag
Not available
Not available
Rear outboard head restraints
Not available
Not available

Limited Warranties & Roadside Assistance

4-yrs./50,000 miles
5-yrs./unlimited miles
4-yrs./50,000 miles

IS 250 Key Advantages

2006 Lexus IS 250

Performance/Technology

- More compact V6 engine
- Rear-wheel drive (RWD) or all-wheel drive (AWD)
- More aerodynamic: 0.28 Cd
- Tighter turning circle: 33.5 ft. (RWD); 35.5 ft. (AWD)
- Wider front/rear tread: 60.4 in./60.4 in.
- Standard 17-inch wheels and tires
- Available 18-inch wheels and tires
- Greater fuel capacity: 17.1 gal.

Luxury & Convenience

- More front legroom: 43.9 in.
- Greater trunk capacity: 13.0 cu. ft.
- Standard SmartAccess with push-button start/stop
- Instrumentation featuring driver-programmable rpm shift light and mph speed warning
- Sound-absorbing sunvisors to enhance cabin quietness
- Available aluminum or illuminated (blue) scuff plates
- Standard 13-speaker Lexus Premium Sound System with six-disc in-dash CD changer, I-POD® and MP3 compatibility with miniplug "AUX" accessory port in rear of center console box
- Available 14-speaker Mark Levinson® Premium Audio System
- Standard six-disc in-dash CD changer
- Rear Back-up Camera (with available navigation system)
- Available heated and ventilated front seats
- Available three-position memory system for front seats, tilt/telescoping steering wheel and outside mirrors
- Standard auto-dimming electrochromic inside mirror
- Available reverse auto-tilt down feature for both outside mirrors
- Standard HomeLink® universal transceiver

Exterior

- 10 exterior color choices
- Standard metallic paint choices
- Laminated acoustic windshield glass

Safety & Security

- Available Pre-Collision System (PCS)⁵ with Adaptive Radar Cruise Control (AT models only)
- Available front and rear Intuitive Parking Assist
- Driver's and front passenger's knee airbags (SRS)³
- Twin-chamber front passenger front airbag (SRS)³
- First aid and tool kits

Limited Warranty & Roadside Assistance

- Superior powertrain coverage: 6-yrs./70,000 miles
- Superior roadside assistance: 4-yrs./unlimited miles

2006 BMW 325i**Performance/Technology**

I6 engine

Rear-wheel drive (RWD) only

0.30 Cd

36.1 ft.

59.1 in./59.6 in.

Optional 17-inch wheels and tires

Not available

15.9 gal.

Luxury & Convenience

41.5 in.

12.0 cu. ft.

Standard engine start/stop button and optional Comfort Access keyless entry

Not available

Conventional sunvisors

Standard aluminum/rubber doorsill trim plates

Standard 10-speaker anti-theft AM/FM/CD audio system, auxiliary audio input, MP3 CD-capable

Optional 13-speaker Logic7 Surround Sound audio system

Standard CD player; optional six-disc CD/MP3 changer

Not available

Optional heated front seats

Optional two-position memory system for driver's seat and outside mirrors

Optional auto-dimming inside mirror

Optional automatic tilt-down of passenger's side mirror only

Optional three-button universal garage door opener

Exterior

Eight exterior color choices

Optional metallic paint choices

Not available

Safety & Security

Optional Active Cruise Control only

Optional rear Park Distance Control (PDC)

Not available

Conventional front passenger airbag

Not available

Limited Warranty & Roadside Assistance

4-yrs./50,000 miles

4-yrs./50,000 miles

IS 250 Key Advantages

2006 Lexus IS 250

Performance/Technology

Dual Variable Valve Timing with intelligence (Dual VVT-i) varies intake and exhaust timing

6-speed automatic transmission with steering wheel-mounted paddle shifters

Shorter overall length for easier maneuverability: 180.1 in.

Hill-start Assist Control (HAC)/(AT only)

Tighter turning circle: 33.5 ft. (RWD); 35.5 ft. (AWD)

Larger rear brakes: 11.45 in.

Wider front/rear tread: 60.4 in./60.4 in.

Luxury & Convenience

Standard SmartAccess with push-button start/stop

Greater trunk capacity: 13.0 cu. ft.

Instrumentation featuring driver-programmable rpm shift light and mph speed warning

Available aluminum sport pedals

Sound-absorbing sunvisors to enhance cabin quietness

Available heated and ventilated front seats

Standard 13-speaker Lexus Premium Sound System with six-disc in-dash CD changer, I-POD® and MP3 compatibility with miniplug "AUX" accessory port in rear of center console box

Available 14-speaker Mark Levinson® Premium Audio System with six-disc in-dash DVD/CD changer, 300 watts of power at 0.1% Total Harmonic Distortion (THD), 71-channel topography surround processing, DVD-Audio & Video with discrete 5.1-channel playback

Rear Back-up Camera (with available navigation system)

Standard auto-dimming electrochromic inside mirror with compass

Power-adjustable heated outside mirrors with LED puddle lamps; available auto-dimming electrochromic, reverse-linked auto tilt-down and memory features

Three-position memory system includes front seats, tilt/telescoping steering column and outside mirrors

Standard power windows with one-touch up/down and jam protection for all windows

Standard auto on/off headlamps with variable headlamp/taillamp-off delay feature

Standard HomeLink® universal transceiver

Standard tool kit

Exterior

10 exterior color choices

Available headlamp washers

Laminated acoustic windshield glass

Safety & Security

Available Pre-Collision System (PCS)⁵ with Adaptive Radar Cruise Control (AT models only)

Available front and rear Intuitive Parking Assist

Available Adaptive Front Lighting System (AFS) and High-Intensity Discharge (HID) headlamps with dynamic auto leveling

Daytime Running Lights (DRL)

Driver's and front passenger's knee airbags (SRS)³

Twin-chamber front passenger front airbag (SRS)³

Rear outboard pre-tensioners and force limiters

2006 Infiniti G35**Performance/Technology**

Continuously Variable Valve Timing Control System (CVTCS) varies intake timing only

5-speed automatic transmission with manual shift mode on shift gate

186.9 in.

Not available

36.0 ft. (AT); 37.4 ft. (MT)

11.3 in. (AWD)

59.1 in./59.3 in. (RWD); 59.3 in./59.3 in. (AWD)

Luxury & Convenience

Optional Intelligent Key with push-button start

11.8 cu. ft. (with optional full-size spare tire)

Not available

Not available

Conventional sunvisors

Standard front seats only

Standard six-speaker audio system and in-dash single-feed six-disc CD auto-changer with MP3 playback capability

Optional seven-speaker Bose® premium audio system with 222 watts and in-dash single feed six-disc CD auto-changer

Not available

Optional electrochromic auto-dimming inside mirror

Power heated dual body-colored remote-controlled outside mirrors

Two-position memory system for driver's seat and steering wheel only

Standard one-touch up/down feature for front windows only; optional one-touch up/down for rear windows

Optional auto on/off headlights

Optional HomeLink® universal transceiver

Optional roadside emergency kit

Exterior

Eight exterior color choices

Not available

Not available

Safety & Security

Not available

Not available

Standard High-Intensity Discharge (HID) xenon headlights only

Not available

Conventional front passenger airbag

Not available

Not available

IS 250 Key Advantages

2006 Lexus IS 250

Performance/Technology

- Greater engine displacement: 2.5 liters
- Dual Variable Valve Timing with intelligence (Dual VVT-i) varies intake and exhaust timing
- V6 engine
- 24-valve engine
- More power: 204 hp @ 6,400 rpm¹
- More aerodynamic: 0.28 Cd
- Steering wheel-mounted paddle shifters included with automatic transmission
- Hill-start Assist Control (HAC)/(AT models only)
- Tighter turning circle: 33.5 ft. (RWD); 35.5 ft. (AWD)
- Larger rear brakes: 11.45 in.
- Standard 17-inch wheels and tires
- Greater fuel capacity: 17.1 gal.

Luxury & Convenience

- Standard SmartAccess with push-button start/stop
- More front headroom (w/o moonroof): 39.0 in.
- More front legroom: 43.9 in.
- Driver-programmable rpm shift light and mph speed warning features for electroluminescent Optitron instrumentation
- Available aluminum sport pedals
- Available heated and ventilated front seats
- Sound-absorbing sunvisors to enhance cabin quietness
- Available aluminum and illuminated (blue) scuff plates
- Standard 13-speaker Lexus Premium Sound System
- Standard I-POD[®] and MP3 compatibility with miniplug "AUX" accessory port in rear of center console box
- Available 14-speaker Mark Levinson[®] Premium Audio System with six-disc in-dash DVD/CD changer, 300 watts of power at 0.1% Total Harmonic Distortion (THD), 7.1-channel topography surround processing, DVD-Audio & Video with discrete 5.1-channel playback
- Voice activation included with available navigation system
- Seven-inch screen included with available navigation system
- Rear Back-up Camera and Bluetooth[™] wireless capability (with available navigation system)
- Standard auto-dimming electrochromic inside mirror with compass
- Power-adjustable heated outside mirrors with LED puddle lamps; available auto-dimming electrochromic, reverse-linked auto tilt-down and memory features
- Front passenger's seat and tilt/telescoping steering wheel included in available memory system
- Standard HomeLink[®] universal transceiver

Exterior

- Standard metallic or pearl exterior paint choices
- Laminated acoustic windshield glass

Safety & Security

- Available Pre-Collision System (PCS)⁵ with Adaptive Radar Cruise Control (AT models only)
- Available front and rear Intuitive Parking Assist
- Standard Daytime Running Lights (DRL)
- Driver's and front passenger's knee airbags (SRS)³
- Twin-chamber front passenger front airbag (SRS)³
- Standard Tire Pressure Monitoring System⁴

Limited Warranty & Roadside Assistance

- Superior powertrain coverage: 6-yrs./70,000 miles
- Superior roadside assistance: 4-yrs./unlimited miles

2005 Audi A4 2.0 T**Performance/Technology**

2.0 liters

Variable intake valve timing

I4 engine

16-valve engine

200 hp @ 5,100-6,000 rpm

0.33 Cd

Not available

Not available

36.4 ft.

11.3 in.

Optional 17-inch wheels and tires

16.6 gal. (Quattro®)

Luxury & Convenience

Not available

38.4 in.

41.3 in.

Not available

Not available

Optional heated front and rear seats

Not available

Standard protective aluminum door sill trim

Standard 10-speaker Audi Symphony II stereo

MP3 player with optional navigation system

Optional 10-speaker Bose® premium sound system with six-disc CD changer and 200 watts of power

Not available

6.25-inch screen with optional navigation system

Not available

Optional automatic-dimming inside mirror with digital compass

Power body-colored outside mirrors with defog feature; puddle lights on doors

Not included in optional memory system

Optional HomeLink® remote transmitter

Exterior

Optional metallic or pearl effect exterior paint choices

Not available

Safety & Security

Not available

Not available

Optional Daytime Running Lights (DRL)

Not available

Conventional front passenger airbag

Optional Tire Pressure Monitoring System

Limited Warranty & Roadside Assistance

4-yrs./50,000 miles

4-yrs./50,000 miles

IS 250 Key Advantages

2006 Lexus IS 250

Performance/Technology

- More sophisticated DOHC engine
- Dual Variable Valve Timing with intelligence (Dual VVT-i) varies intake and exhaust timing
- 6-speed automatic transmission with steering wheel-mounted paddle shifters
- Rear-wheel drive (RWD) or all-wheel drive (AWD)
- More aerodynamic: 0.28 Cd
- Hill-start Assist Control (HAC)/(AT models only)
- Better front/rear weight distribution (%): 52/48 (RWD); 54/46 (AWD)
- Shorter overall length for easier maneuverability: 180.1 in.
- Tighter turning circle: 33.5 ft. (RWD); 35.5 ft. (AWD)
- Larger rear brakes: 11.45 in.

Luxury & Convenience

- More front legroom: 43.9 in.
- Greater trunk capacity: 13.0 cu. ft.
- Available 10-way power front passenger's seat including two-way power lumbar support
- Available heated and ventilated front seats
- Sound-absorbing sunvisors to enhance cabin quietness
- Standard SmartAccess with push-button start/stop
- Instrumentation featuring driver-programmable rpm shift light and mph speed warning
- Standard 13-speaker Lexus Premium Sound System
- Available 14-speaker Mark Levinson® Premium Audio System
- I-POD® and MP3 compatibility with miniplug "AUX" accessory port in rear of center console box
- FM diversity antenna
- Rear Back-up Camera (with available navigation system)
- Available aluminum sport pedals
- Available aluminum and illuminated (blue) scuff plates
- Standard puddle lamps and available auto-dimming electrochromic feature for outside mirrors
- Available power rear sunshade with reverse-linked auto-down, speed-linked auto-up and manual up/down switch
- Available three-position memory includes front seats and tilt/telescoping steering wheel
- Standard power windows with one-touch up/down and jam protection for all windows
- Variable headlamp/taillamp-off delay feature
- Available rain-sensing windshield wipers

Exterior

- 10 exterior color choices
- Available headlamp washers

Safety & Security

- Available Pre-Collision System (PCS)⁵ with Adaptive Radar Cruise Control (AT only)
- Available front and rear Intuitive Parking Assist
- Available Adaptive Lighting System (AFS) and High-Intensity Discharge (HID) headlamps with dynamic auto leveling
- Driver's and front passenger's knee airbags (SRS)³
- Twin-chamber front passenger front airbag (SRS)³
- Daytime Running Lights (DRL)
- Rear outboard pre-tensioners and force limiters
- Headrests at all three rear seating positions with rear center featuring up/down adjustability to ensure driver's field of vision
- Tire Pressure Monitoring System⁴
- First aid and tool kits

Limited Warranties & Roadside Assistance

- Superior powertrain coverage: 6-yrs./70,000 miles
- Superior corrosion coverage: 6-yrs./unlimited miles
- Superior roadside assistance: 4-yrs./unlimited miles

2005 Acura TL**Performance/Technology**

SOHC engine
VTEC™ varies intake timing only
5-speed automatic transmission with shift gate-mounted sequential SportShift™ feature
Front-wheel drive (FWD)
0.29 Cd
Not available
61/39 (AT); 60/40 (MT)
189.3 in.
39.7 ft.
11.1 in. (AT)

Luxury & Convenience

42.8 in.
12.5 cu. ft. (12.3 cu. ft. w/navigation system)
Standard four-way power front passenger's seat only
Standard heated front seats
Conventional sunvisors
Not available
Not available
Standard eight-speaker sound system
No optional audio upgrade
Not available
Not available
Not available
Not available
Not available
Not available
Standard two-position memory system for driver's seat (steering column position not available)
Power windows with driver's and front passenger's auto-up/down only
Auto-off headlights only
Not available

Exterior

Eight exterior color choices
Not available

Safety & Security

Not available
Optional rear area sensor only
Standard Bi-Xenon High-Intensity Discharge (HID) headlights only
Not available
Conventional front passenger airbag
Not available
Not available
Rear outboard head restraints
Not available
Not available

Limited Warranties & Roadside Assistance

4-yrs./50,000 miles
5-yrs./unlimited miles
4-yrs./50,000 miles

Technical Specifications

2006 IS 350/IS 250

Engine

Type	Four-cam (DOHC) 24-valve V6 with Dual VVT-i
- IS 350 & IS 250	
Displacement	3.5-liter (210.9 cu. in.)
- IS 350	
- IS 250	2.5-liter (152.5 cu. in.)
Bore x Stroke (mm/in.)	94.0 x 83.0 (3.70 x 3.27)
- IS 350	
- IS 250	83.0 x 77.0 (3.27 x 3.03)
Horsepower ¹	306 hp @ 6,400 rpm
- IS 350	
- IS 250	204 hp @ 6,400 rpm
Torque ¹	277 lb.-ft. @ 4,800 rpm
- IS 350	
- IS 250	185 lb.-ft. @ 4,800 rpm
Compression Ratio	11.8:1
- IS 350	
- IS 250	12.0:1
Ignition System	Direct Injection System (DIS)
Fuel System	Direct injection and port injection
- IS 350	4-stroke gasoline engine Superior (D-4S)
- IS 250	Direct injection 4-stroke gasoline engine (D-4)
Fuel Requirement	Premium unleaded 91 octane
Emission Certification	Ultra Low Emission Vehicle II (ULEV-II)

Drivetrain

Layout	Front engine/RWD/6AT
- IS 350	
- IS 250	Front engine/RWD/6AT
- IS 250	Front engine/RWD/6MT
- IS 250	Front engine/AWD/6AT
Transmission	6-speed sequential automatic Electronically Controlled Transmission with intelligence (ECT-i) and paddle shifters
- IS 350/IS 250 RWD & AWD	
- IS 250 RWD	6-speed manual transmission
Gear Ratios	
- IS 350	
1st	3.520
2nd	2.042
3rd	1.400
4th	1.000
5th	0.716
6th	0.586
Reverse	3.224
- IS 250 (manual/RWD)	
1st	3.791
2nd	2.275
3rd	1.524
4th	1.185
5th	1.000
6th	0.786
Reverse	3.466

Drivetrain (cont.)

– IS 250 (automatic/RWD)	
1st	3.538
2nd	2.060
3rd	1.404
4th	1.000
5th	0.713
6th	0.582
Reverse	3.168
– IS 250 (automatic/AWD)	
1st	3.520
2nd	2.042
3rd	1.400
4th	1.000
5th	0.716
6th	0.586
Reverse	3.224
Final Drive Ratio	
– IS 350 (automatic/RWD)	4.083
– IS 250 (manual/RWD)	3.727
– IS 250 (automatic/RWD)	3.909
– IS 250 (manual/AWD)	4.100

Chassis

Front Suspension	Independent double wishbone w/coil springs, monotube shock absorbers, high-mount upper arm, stabilizer bar and anti-dive geometry
Rear Suspension	Multi-link w/coil springs, monotube shock absorbers, stabilizer bar, two upper and lower arms, toe control arm and cast-aluminum axle carriers
Steering	Electronic Power Steering (EPS)
Turning Circle (curb to curb)	
– IS 350/IS 250 RWD	33.5 ft.
– IS 250 AWD	35.5 ft.
Steering Wheel Turns (lock-to-lock)	
– IS 350/IS 250 RWD	2.91
– IS 250 AWD	2.96
Brake System	
– IS 350	Vehicle Dynamics Integrated Management (VDIM) ² with four-wheel ventilated power-assisted disc brakes
– IS 250	Hydraulic brake system with front ventilated/rear solid power-assisted disc brakes
Brake Size Diameter (front/rear)	
– IS 350	13.15 in./12.2 in.
– IS 250	11.65 in./11.45 in.

Technical Specifications

2006 IS 350/IS 250 *continued*

Wheels and Tires

Wheels	
-IS 350/IS 250	17 x 8 JJ
Available Wheels	
-IS 350/IS 250 RWD	18 x 8 JJ front, 18 x 8.5 JJ rear
Tire Size	
-IS 350/IS 250 RWD	P225/45VR17 front, P245/45VR17 rear
-IS 250 AWD	P225/45VR17
Available Tires	
-IS 350/IS 250 RWD	P225/40YR18 front, P255/40YR18 rear
Wheel Type	10-spoke 17-in. aluminum alloy (standard); split 5-spoke 18-in. aluminum alloy (available)
Spare Tire/Wheel	Temporary spare tire

Exterior Data and Dimensions

Body Type	5-passenger luxury sport sedan
Construction	Unitized body with extensive use of high tensile strength and galvanized steel
Wheelbase	107.5 in.
Length	180.1 in.
Width	70.9 in.
Height (unloaded)	
-IS 350/IS 250 RWD	56.1 in.
-IS 250 AWD	56.7 in.
Curb Weight	
-IS 350	3,527 lbs.
-IS 250 RWD (AT)	3,435 lbs.
-IS 250 RWD (MT)	3,455 lbs.
-IS 250 AWD (AT)	3,651 lbs.
Weight Distribution, front/rear (%)	
-IS 350/IS 250 RWD	52/48
-IS 250 AWD	54/46
Tread Width (front/rear)	60.4 in./60.4 in.
Ground Clearance	5.3 in.
Fuel Tank Capacity	17.1 gal.

Interior Dimensions

Seating Capacity	5
Front Headroom	
-w/o moonroof	39.0 in.
-w/moonroof	37.2 in.
Rear Headroom	
-w/o moonroof	36.9 in.
-w/moonroof	36.7 in.
Front Legroom	43.9 in.
Rear Legroom	30.6 in.
Front Shoulder Room	54.4 in.
Rear Shoulder Room	52.7 in.
Front Hip Room	54.1 in.
Rear Hip Room	53.7 in.
Passenger Volume	88.3 cu. ft.
Trunk Volume	13.0 cu. ft.

Performance

0-60 mph Acceleration ⁸	
- IS 350	5.6 sec.
- IS 250 RWD	7.9 sec.
- IS 250 AWD	8.3 sec.
1/4 Mile Acceleration ⁸	
- IS 350	14.2 sec.
- IS 250 RWD	16.0 sec.
- IS 250 AWD	16.0 sec.
Top Track Speed (mph/electronically limited) ⁸	
- IS 350	142 mph
- IS 250 RWD (MT)	142 mph
- IS 250 RWD (AT)	140 mph
- IS 250 AWD	130 mph
Estimated City/Highway Fuel Economy (mpg)	NA
Coefficient of Drag (Cd)	0.28



Competitive Specifications at a Glance

Powertrain/Performance

2006 Lexus IS 350

Engine	3.5L DOHC 24-valve V6 with Dual Variable Valve Timing with intelligence (VVT-i)
Horsepower	306 hp @ 6,400 rpm ¹
Torque	277 lb.-ft. @ 4,800 rpm ¹
Transmission	6-speed sequential automatic Electronically Controlled Transmission with intelligence (ECT-i) and paddle shifters
0-60 mph Acceleration	5.6 sec. ⁸
Coefficient of Drag (Cd)	0.28
Estimated City/Highway Fuel Economy (mpg)	NA
Emission Certification	Ultra Low Emission Vehicle II (ULEV-II)
Turning Circle	33.5 ft.

Dimensions

Seating	5
Wheelbase	107.5 in.
Length	180.1 in.
Width	70.9 in.
Height (unloaded)	56.1 in.
Front Headroom w/o moonroof w/moonroof	39.0 in. 37.2 in.
Rear Headroom w/o moonroof w/moonroof	36.9 in. 36.7 in.
Front Legroom	43.9 in.
Rear Legroom	30.6 in.
Front Shoulder Room	54.4 in.
Rear Shoulder Room	52.7 in.
Curb Weight	3,527 lbs.
Passenger Volume	88.3 cu. ft.
Trunk Volume	13.0 cu ft.
Fuel Capacity	17.1 gal.

Limited Warranties

Vehicle	4-yrs./50,000 miles
Powertrain	6-yrs./70,000 miles
Corrosion	6-yrs./unlimited miles
Roadside Assistance	4-yrs./unlimited miles

2006 BMW 330i

3.0L DOHC 24-valve I6 with Double-VANOS steplessly Variable Valve Timing

255 hp @ 6,600 rpm

220 hp @ 2,750 rpm

6-speed manual transmission (std.); optional 6-speed STEPTRONIC automatic transmission with Adaptive Transmission Control

6.3 sec. (AT)

6.1 sec. (MT)⁹

0.30

21/29 (AT)

20/30 (MT)⁹

Ultra Low Emission Vehicle (ULEV)

36.1 ft.

5

108.7 in.

178.2 in.

71.5 in.

55.9 in.

-

37.4 in.

-

37.1 in.

41.5 in.

34.6 in.

55.4 in.

55.1 in.

3,450 lbs. (AT)

3,417 lbs. (MT)

93.0 cu. ft.

12.0 cu. ft.

15.9 gal.

4-yrs./50,000 miles

4-yrs./50,000 miles

12-yrs./unlimited miles

4-yrs./50,000 miles

2006 Infiniti G35

3.5L DOHC 24-valve V6 with Continuously Variable Valve Timing Control System (CVTCS)

280 hp @ 6,200 rpm (AT)

298 hp @ 6,400 rpm (MT)

270 lb.-ft. @ 4,800 rpm (AT)

260 lb.-ft. @ 4,800 rpm (MT)

5-speed automatic transmission with manual shift mode; short-throw 6-speed manual transmission

6.2 sec. (AT)¹⁰

5.8 sec. (MT)¹¹

0.27 (0.26 w/optional Aero Package)

18/25 (AT/RWD)

17/24 (AT/AWD)

19/26 (MT)⁹

Low Emission Vehicle II (LEV-II)

36.0 ft. (AT)

37.4 ft. (MT)

5

112.2 in.

186.9 in.

69.0 in.

57.7 in.

40.1 in.

38.7 in.

37.9 in.

37.4 in.

43.6 in.

33.6 in.

56.4 in.

55.5 in.

3,449 lbs. (AT/RWD)

3,650 lbs. (AT/AWD)

3,472 lbs. (MT/RWD)

98.0 cu. ft. (w/o sunroof)

95.5 cu. ft. (w/sunroof)

14.8 cu. ft. (11.8 cu. ft. w/optional full-size spare)

20.0 gal.

4-yrs./60,000 miles

6-yrs./70,000 miles

7-yrs./unlimited miles

4-yrs./unlimited miles

Competitive Specifications at a Glance

Powertrain/Performance

2006 Lexus IS 350

Engine	3.5L DOHC 24-valve V6 with Dual Variable Valve Timing with intelligence (VVT-i)
Horsepower	306 hp @ 6,400 rpm ¹
Torque	277 lb.-ft. @ 4,800 rpm ¹
Transmission	6-speed sequential automatic Electronically Controlled Transmission with intelligence (ECT-i) and paddle shifters
0-60 mph Acceleration	5.6 sec. ⁸
Coefficient of Drag (Cd)	0.28
Estimated City/Highway Fuel Economy (mpg)	NA
Emission Certification	Ultra Low Emission Vehicle II (ULEV-II)
Turning Circle	33.5 ft.

Dimensions

Seating	5
Wheelbase	107.5 in.
Length	180.1 in.
Width	70.9 in.
Height (unloaded)	56.1 in.
Front Headroom w/o moonroof w/moonroof	39.0 in. 37.2 in.
Rear Headroom w/o moonroof w/moonroof	36.9 in. 36.7 in.
Front Legroom	43.9 in.
Rear Legroom	30.6 in.
Front Shoulder Room	54.4 in.
Rear Shoulder Room	52.7 in.
Curb Weight	3,527 lbs.
Passenger Volume	88.3 cu. ft.
Trunk Volume	13.0 cu ft.
Fuel Capacity	17.1 gal.

Limited Warranties

Vehicle	4-yrs./50,000 miles
Powertrain	6-yrs./70,000 miles
Corrosion	6-yrs./unlimited miles
Roadside Assistance	4-yrs./unlimited miles

2005 Audi A4 3.2

3.2L DOHC 24-valve V6 with variable intake valve timing and intake manifold

255 hp @ 6,500 rpm

243 lb.-ft. @ 3,250 rpm

6-speed Tiptronic® automatic transmission and Quattro® all-wheel drive

6.6 sec. (AT)⁹

0.31

19/26 (AT)⁹

Ultra Low Emission Vehicle (ULEV)

36.4 ft.

5

104.3 in.

180.6 in.

69.8 in.

56.2 in.

38.4 in.

379 in.

37.2 in.

371 in.

41.3 in.

34.2 in.

55.1 in.

53.4 in.

3,484 lbs.

901 cu. ft.

13.4 cu. ft.

16.6 gal.

4-yrs./50,000 miles

4-yrs./50,000 miles

12-yrs./unlimited miles

4-yrs./50,000 miles

2005 Acura TL

3.2L SOHC 24-valve V6 with Variable Valve Timing and Lift Electronic Control (VTEC™)

270 hp @ 6,200 rpm

238 lb.-ft. @ 5,000 rpm

5-speed automatic with Sequential SportShift and Grade Logic Control; 6-speed close-ratio manual transmission

6.3 sec. (MT)²

0.29

20/29 (AT/MT)⁹

Ultra Low Emission Vehicle II (ULEV-II)

39.7 ft.

5

1079 in.

189.3 in.

72.2 in.

56.7 in.

-

38.7 in.

-

37.2 in.

42.8 in.

34.9 in.

58.3 in.

55.7 in.

3,570 lbs. (AT)

3,472 lbs. (MT)

979 cu. ft.

12.5 cu. ft. (12.3 cu. ft. w/navigation system)

17.0 gal.

4-yrs./50,000 miles

4-yrs./50,000 miles

5-yrs./unlimited miles

4-yrs./50,000 miles

Competitive Specifications at a Glance

Powertrain/Performance

2006 Lexus IS 250

Engine	2.5L DOHC 24-valve V6 with Dual Variable Valve Timing with intelligence (VVT-i)
Horsepower	204 hp @ 6,400 rpm ¹
Torque	185 lb.-ft. @ 4,800 rpm ¹
Transmission	6-speed sequential automatic Electronically Controlled Transmission with intelligence (ECT-i) and paddle shifters (RWD/AWD); 6-speed manual transmission (RWD)
0-60 mph Acceleration	7.9 sec. (RWD) 8.3 sec. (AWD) ⁸
Coefficient of Drag (Cd)	0.28
Estimated City/Highway Fuel Economy (mpg)	NA
Emission Certification	Ultra Low Emission Vehicle II (ULEV-II)
Turning Circle	33.5 ft. (RWD) 35.5 ft. (AWD)

Dimensions

Seating	5
Wheelbase	107.5 in.
Length	180.1 in.
Width	70.9 in.
Height (unloaded)	56.1 in. (RWD) 56.7 in. (AWD)
Front Headroom w/o moonroof w/moonroof	39.0 in. 37.2 in.
Rear Headroom w/o moonroof w/moonroof	36.9 in. 36.7 in.
Front Legroom	43.9 in.
Rear Legroom	30.6 in.
Front Shoulder Room	54.4 in.
Rear Shoulder Room	52.7 in.
Curb Weight	3,435 lbs. (AT/RWD) 3,455 lbs. (MT/RWD) 3,651 lbs. (AT/AWD)
Passenger Volume	88.3 cu ft.
Trunk Volume	13.0 cu ft.
Fuel Capacity	17.1 gal.

Limited Warranties

Vehicle	4-yrs./50,000 miles
Powertrain	6-yrs./70,000 miles
Corrosion	6-yrs./unlimited miles
Roadside Assistance	4-yrs./unlimited miles

2006 BMW 325i

3.0L DOHC 24-valve I6 with Double-VANOS steplessly Variable Valve Timing

215 hp @ 6,250 rpm

185 lb.-ft. @ 2,750 rpm

6-speed manual transmission (std.); optional 6-speed STEPTRONIC automatic transmission with Adaptive Transmission Control

7.2 sec. (AT)
6.7 sec. (MT)⁹

0.30

21/29 (AT)
20/30 (MT)⁹

Ultra Low Emission Vehicle (ULEV)

36.1 ft.

5

108.7 in.

178.2 in.

71.5 in.

55.9 in.

—

37.4 in.

—

37.1 in.

41.5 in.

34.6 in.

55.4 in.

55.1 in.

3,285 lbs. (MT)
3,351 lbs. (AT)

93.0 cu. ft.

12.0 cu. ft.

15.9 gal.

4-yrs./50,000 miles

4-yrs./50,000 miles

12-yrs./unlimited miles

4-yrs./50,000 miles

2006 Infiniti G35

3.5L DOHC 24-valve V6 with Continuously Variable Valve Timing Control System (CVTCS)

280 hp @ 6,200 rpm (AT)
298 hp @ 6,400 rpm (MT)

270 lb.-ft. @ 4,800 rpm (AT)
260 lb.-ft. @ 4,800 rpm (MT)

5-speed automatic transmission with manual shift mode; short-throw 6-speed manual transmission

6.2 sec. (AT)¹⁰
5.8 sec. (MT)¹¹

0.27 (0.26 w/optional Aero Package)

18/25 (AT/RWD)
17/24 (AT/AWD)
19/26 (MT)⁹

Low Emission Vehicle II (LEV-II)

36.0 ft. (AT)
37.4 ft. (MT)

5

112.2 in.

186.9 in.

69.0 in.

57.7 in.

40.1 in.

38.7 in.

37.9 in.

37.4 in.

43.6 in.

33.6 in.

56.4 in.

55.5 in.

3,449 lbs. (AT/RWD)
3,650 lbs. (AT AWD)
3,472 lbs. (MT/RWD)

98.0 cu. ft. (w/o sunroof)
95.5 cu. ft. (w/sunroof)

14.8 cu. ft. (11.8 cu. ft. w/optional full-size spare)

20.0 gal.

4-yrs./60,000 miles

6-yrs./70,000 miles

7-yrs./unlimited miles

4-yrs./unlimited miles

Competitive Specifications at a Glance

Powertrain/Performance

2006 Lexus IS 250

Engine	2.5L DOHC 24-valve V6 with Dual Variable Valve Timing with intelligence (VVT-i)
Horsepower	204 hp @ 6,400 rpm ¹
Torque	185 lb.-ft. @ 4,800 rpm ¹
Transmission	6-speed sequential automatic Electronically Controlled Transmission with intelligence (ECT-i) and paddle shifters (RWD/AWD); 6-speed manual transmission (RWD)
0-60 mph Acceleration	7.9 sec. (RWD) 8.3 sec. (AWD) ⁸
Coefficient of Drag (Cd)	0.28
Estimated City/Highway Fuel Economy (mpg)	NA
Emission Certification	Ultra Low Emission Vehicle II (ULEV-II)
Turning Circle	33.5 ft. (RWD) 35.5 ft. (AWD)

Dimensions

Seating	5
Wheelbase	107.5 in.
Length	180.1 in.
Width	70.9 in.
Height (unloaded)	56.1 in. (RWD) 56.7 in. (AWD)
Front Headroom w/o moonroof w/moonroof	39.0 in. 37.2 in.
Rear Headroom w/o moonroof w/moonroof	36.9 in. 36.7 in.
Front Legroom	43.9 in.
Rear Legroom	30.6 in.
Front Shoulder Room	54.4 in.
Rear Shoulder Room	52.7 in.
Curb Weight	3,435 lbs. (AT/RWD) 3,455 lbs. (MT/RWD) 3,651 lbs. (AT/AWD)
Passenger Volume	88.3 cu ft.
Trunk Volume	13.0 cu ft.
Fuel Capacity	17.1 gal.

Limited Warranties

Vehicle	4-yrs./50,000 miles
Powertrain	6-yrs./70,000 miles
Corrosion	6-yrs./unlimited miles
Roadside Assistance	4-yrs./unlimited miles

2005 Audi A4 2.0 T

2.0L DOHC 16-valve I4 with variable valve timing and intake manifold

200 hp @ 5,100-6,000 rpm

207 lb.-ft. @ 1,800-5,000 rpm

Multitronic™ Continuously Variable Transmission (CVT) and FrontTrak/(FWD); 6-speed manual transmission and FrontTrak/(FWD); 6-speed manual transmission and Quattro®/(AWD); 6-speed Tiptronic® and Quattro®/(AWD)

7.3 sec. (Multitronic™/FWD), (MT Quattro® AWD)

7.5 sec. (Tiptronic®/AWD)

7.1 sec. (MT/FWD)⁹

0.33

24/32 (Multitronic™/FWD)

22/30 (Tiptronic®/AWD)

22/34 (MT/Quattro® AWD)

22/34 (MT/FWD)⁹

Ultra Low Emission Vehicle (ULEV)

36.4 ft.

2005 Acura TL

3.2L SOHC 24-valve V6 with Variable Valve Timing and Lift Electronic Control (VTEC™)

270 hp @ 6,200 rpm

238 lb.-ft. @ 5,000 rpm

5-speed automatic with Sequential SportShift and Grade Logic Control; 6-speed close-ratio manual transmission

6.3 sec. (MT)²

0.29

20/29 (AT/MT)⁹

Ultra Low Emission Vehicle II (ULEV-II)

39.7 ft.

5

104.3 in.

180.6 in.

69.8 in.

56.2 in.

5

1079 in.

189.3 in.

72.2 in.

56.7 in.

38.4 in.

37.9 in.

-

38.7 in.

37.2 in.

37.1 in.

-

37.2 in.

41.3 in.

42.8 in.

34.2 in.

34.9 in.

55.1 in.

58.3 in.

53.4 in.

55.7 in.

3,197 lbs. (Multitronic™ FrontTrak)

3,570 lbs. (AT)

3,142 lbs. (MT/FrontTrak)

3,472 lbs. (MT)

3,285 lbs. (MT/Quattro®)

3,329 lbs. (Tiptronic® Quattro®)

90.1 cu. ft.

97.9 cu. ft.

13.4 cu. ft.

12.5 cu. ft. (12.3 cu. ft. w/navigation system)

16.6 gal. (Quattro®)

17.0 gal.

18.5 gal. (FrontTrak)

4-yrs./50,000 miles

4-yrs./50,000 miles

4-yrs./50,000 miles

4-yrs./50,000 miles

12-yrs./unlimited miles

5-yrs./unlimited miles

4-yrs./50,000 miles

4-yrs./50,000 miles

Footnotes

¹ 2006 IS horsepower and torque ratings are based on a new test protocol (revised Standard J1349) from the Society of Automotive Engineers (SAE), which specifies that certain equipment be installed on the engine and be operating during testing; and that the manufacturer-required premium grade fuel be used. Lexus is retesting most of its engines according to the new protocol and it is presumed that all manufacturers will be using the revised standard for future tests. Horsepower and torque ratings may appear to have declined as a result of the new testing protocol, but actual engine performance is not impacted.

² Vehicle Dynamics Integrated Management (VDIM) is an electronic system designed to help the driver maintain vehicle control under adverse conditions. It is not a substitute for safe driving practices. Factors including speed, road conditions and driver steering input can all affect whether VDIM will be effective in preventing a loss of control. Please see your *Owner's Manual* for further details.

³ The Lexus driver's and front passenger's airbags, front seat-mounted side airbags, driver's and front passenger's knee airbags, and front and rear side curtain airbags are Supplemental Restraint Systems (SRS). The driver's and front passenger's airbags and driver's and front passenger's knee airbags are designed to deploy in severe (usually frontal) collisions where the magnitude and duration of the forward deceleration of the vehicle exceeds the design threshold level. The side airbags and side curtain airbags are designed to deploy in certain types of severe side-impact collisions. In all other accidents, the airbags will not deploy. To decrease the risk of injury from a deploying airbag, always wear your seatbelt, sit upright in the middle of the seat, and do not lean against the door. Do not put objects in front of an airbag or around the seatback. Do not use a rearward-facing child seat in any front passenger seat. The force of a deploying airbag SRS may cause serious injury or death. Please see your *Owner's Manual* for further instructions. Vehicle complies with "advanced airbag" requirements of FMVSS 208.

⁴ Lexus' Tire Pressure Monitor alerts driver when tire pressure is critically low. For optimal tire wear and performance, tire pressure should be checked regularly with a gauge; do not rely solely on the monitor. See your *Owner's Manual* for details.

⁵ The Lexus Pre-Collision System (PCS) is designed to help reduce the crash speed and damage in certain frontal collisions only. It is not a collision avoidance system and is not a substitute for safe and attentive driving. System effectiveness depends on many factors, such as speed, driver input and road conditions. Please see your *Owner's Manual* for further information.

⁶ Brake Assist (BA) is designed to help the driver take full advantage of the benefits of the Anti-lock Braking System (ABS). It is not a substitute for safe driving practices. Braking effectiveness also depends on proper brake-system maintenance and tire and road conditions.

⁷ Vehicle Stability Control (VSC) is an electronic system designed to help the driver maintain vehicle control under adverse conditions. It is not a substitute for safe driving practices. Factors including speed, road conditions and driver steering input can all affect whether VSC will be effective in preventing a loss of control. Please see your *Owner's Manual* for further details.

⁸ These performance figures are for comparison only and were obtained with prototype vehicles by professional drivers using special safety equipment and procedures. Do not attempt. Vehicles are tested with manufacturer required premium grade fuel.

⁹ Manufacturer's data.

¹⁰ *Road & Track*, July 2002.

¹¹ *Motor Trend*, June 2005.

¹² *Road & Track*, April 2004.

Please note: Information accurate at the time of publication and subject to change. BMW, Infiniti, Audi and Acura information acquired from manufacturers' consumer brochures, the internet (www.bmwusa.com, www.infiniti.com, www.audiusa.com, www.acura.com, www.kbb.com, www.autosite.com), manufacturers' press Web sites and consumer automotive publications. Lexus is not liable for any errors or omissions in regard to this data. The information available in this brochure is for internal use only and not for advertising or consumer use.

