

IS

LEXUS 2012



THE 2012  
**IS** LINE

IS LINE

IS C  
IS F  
IS



IS F



IS 250    IS 250 AWD    IS 350    IS 350 AWD



IS 250 C    IS 350 C

POWER TO THE  
POWER OF THREE.

WHICHEVER path you choose, the innovation and driving-inspired performance of an IS guarantees one thrilling ride. But each IS model also stands alone—projecting a singular personality and unique appeal. The IS F is the fastest, most dominant performance sedan we've created to date. The IS sedan's design was inspired by the exclusive world of competitive racing. And the IS C features a precision-engineered retractable hardtop that transforms your coupe into a convertible in approximately 20 seconds flat. Despite their differences, each is crafted purely for driving pleasure.

Optional equipment shown.

MODEL INTROS

COCKPIT

PERFORMANCE

INNOVATION

SPECS

THE 2012  
ISC



LIVE A LITTLE.  
A LOT.

A three-piece folding hardtop transforms the IS-C from a sleek coupe into a stunning convertible.

Optional equipment shown.

MODEL INTROS

COCKPIT

PERFORMANCE

INNOVATION

SPECS

THE 2012  
IS F

MODEL INTROS

COCKPIT

PERFORMANCE

INNOVATION

SPECS

EVERYTHING  
YOU THOUGHT WE WEREN'T.

A 416-horsepower<sup>1</sup> V8 with 371 lb-ft of torque<sup>1</sup> gives the IS F all the acceleration you could possibly crave. A scorching 0-to-60 in just 4.6 seconds<sup>1,2</sup> proves our point.

See disclaimers on page 82.

THE 2012  
IS

MODEL INTROS

COCKPIT

PERFORMANCE

INNOVATION

SPECS



ELEGANT MEETS  
AGGRO.

With the force of its V6 engine, available paddle shifters and programmable shift lights, the IS sport sedan delivers authentic performance and style to automotive enthusiasts.

Optional equipment shown.

THE 2012  
**IS** LINE

FULL-THROTTLE  
GRATIFICATION.



COCKPIT  
ISC  
AMENITIES  
SOUND  
ACCESS

ULTIMATELY, the IS is designed for the bold pursuit of pleasure. And for you and your passengers, there are reminders at every turn. The snug cockpit feel of the interior. Bolstered seats wrapped in rich leather trim.

The astonishing clarity of the available Mark Levinson® Premium Surround Sound Audio System.<sup>3</sup> Even the available Navigation System<sup>4</sup> is geared for exhilaration. With available Lexus Enform<sup>®5,6</sup> and Destination Assist, a simple touch of the screen can help you find restaurants, hotels or clubs with intuitive ease.

ISC shown.

See disclaimers on page 82.  
Optional equipment shown.

MODEL INTROS

COCKPIT

PERFORMANCE

INNOVATION

SPECS

YOUR NIGHT?  
WIDE OPEN.

Liberate your wild side in the IS Convertible. Stellar performance and dynamic handling keep your adrenaline pumping while state-of-the-art innovations like an advanced Hard Disk Drive (HDD) Navigation System<sup>4</sup> help you navigate the evening.

Available heated and ventilated front seats are designed specifically for the cabin whether the hardtop is retracted or not. And available one-touch fold-and-return front seats provide easy access for cargo and friends. With a push of a button, 13 motors and 33 sensors act in seamless unison to turn your coupe into a fun-loving convertible. And they do it in approximately 20 seconds—among the fastest in its class. Only its 0-to-60 time is more impressive.

See disclaimers on page 82.  
Optional equipment shown.



THE 2012  
ISC

MODEL INTROS

COCKPIT

PERFORMANCE

INNOVATION

SPECS

THE 2012  
IS LINE



## YOUR NEW COMFORT ZONE

For a car that was inspired by competitive racing, the last thing you'd expect would be an indulgent, comfortable cabin. But the IS is full of surprises. Dual-zone climate control is designed to automatically react to changes due to air temperature or sunlight in any of the models—or when the IS C's top is lowered or raised. The climate-control system also uses a humidity sensor and a microdust and pollen filter. In the IS F and IS 350 sedan and convertible, a smog sensor is designed to detect and help block hydrocarbons from entering the cabin.

The seats and steering wheel are carefully thought-out as well and beg for long drives on winding roads. The steering wheel is small in diameter like a race car's and is bound in leather trim for a firm grip. The seats are bolstered to help hold you in place around curves and are also wrapped in leather hand-chosen from premium full-grain stocks. One last detail you'll definitely want to put your hands on: a leather-and-chrome-trimmed shift knob. Putting the IS in gear is now more tempting than ever.



MODEL INTROS

COCKPIT

PERFORMANCE

INNOVATION

SPECS

Optional equipment shown.

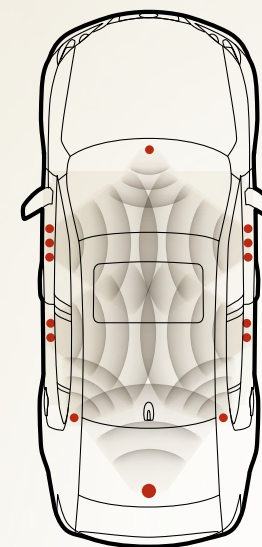


IT'S A TRUE  
PERFORMANCE VEHICLE.  
EVEN FROM WITHIN.

THE 2012  
IS LINE

See disclaimers on page 82.  
Optional equipment shown.

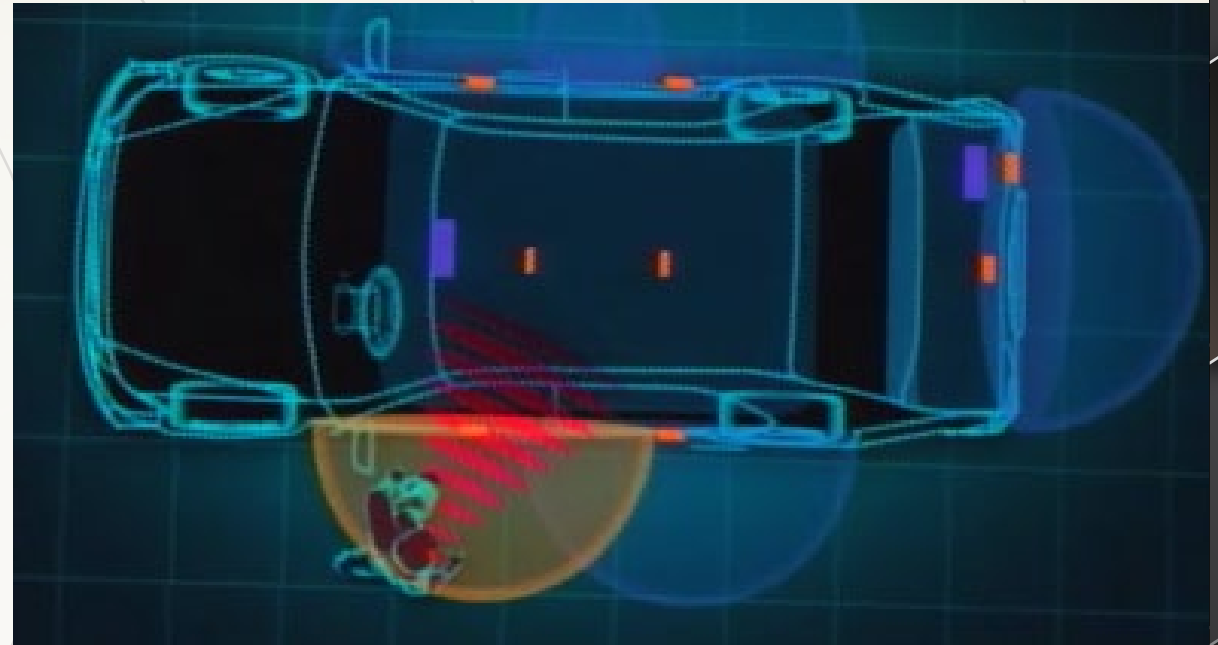
*IS shown.*



To create some of the finest sound possible outside of a recording studio, each IS offers an available Mark Levinson® Premium Surround Sound Audio System.<sup>3</sup> For optimum audio quality, the IS has been designed with multiple sound-absorbing materials to help quiet the cabin from unwanted noise. It then delivers rich, clear sound through the carefully arranged speakers. The vehicles are also outfitted to play music from your iPod®<sup>7</sup> or MP3 player, and every IS offers a standard USB port that allows you to charge and control your iPod<sup>7</sup> from the vehicle's audio controls or available Navigation System.<sup>4</sup> There's also a convenient Bluetooth® audio<sup>8</sup> wireless connection that's available for compatible devices.



EVEN OUTSIDE THE IS,  
YOU'RE STILL THE  
CENTER OF ATTENTION.



As you approach your IS, SmartAccess<sup>9,10</sup> automatically transmits a secure signal directly from your key fob activating the vehicle's lighting sequence and illuminating points of entry—the first being the exterior puddle lights. When your hand touches the door handle,

the door instantly unlocks for quick entry. Once inside, just press the brake pedal with your foot and the IS's ignition button glows green—meaning the engine is primed and ready to growl. No key is needed. With a simple push of the button, you're off.

THE 2012  
IS LINE

OUR ENGINEERS  
NEVER SLOW DOWN.  
YOU WON'T WANT TO  
EITHER.



F PERFORMANCE

IS F  
F SPORT PACKAGE  
F SPORT™ ACCESSORIES  
SHIFTING  
HANDLING  
BRAKING

INSPIRED by the unforgiving Fuji International Speedway, Lexus F vehicles and accessories offer a range of ways to take the performance and styling of your IS to the next level. Want more of an exclusive look? The F Sport™ Package can provide it, with suspension and steering tuned by the same engineers who worked on the LFA.

*IS F shown.*

For an even more dynamic ride, consider F Sport Accessories.<sup>11,12</sup> This selection of track-tested components has been proven to improve both agility and braking times. Finally, there's the IS F, the most aggressive performance sedan Lexus has ever built, providing extraordinary power, nimbleness and aerodynamics.

See disclaimers on page 82.  
Optional equipment shown.

MODEL INTROS

COCKPIT

F PERFORMANCE

INNOVATION

SPECS

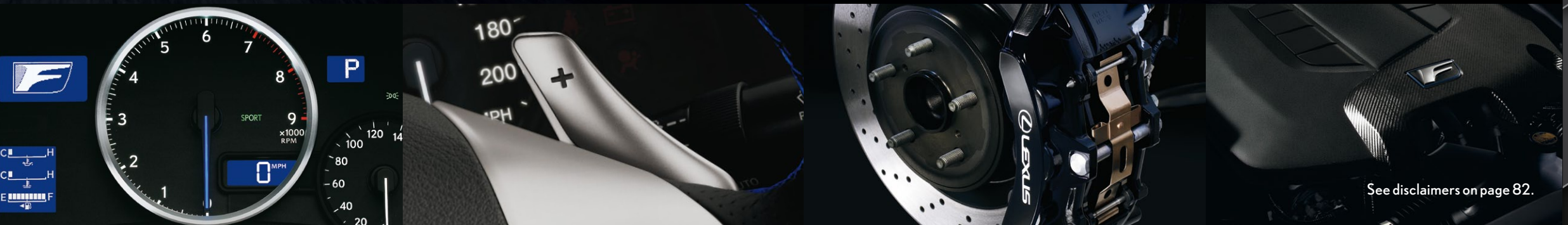
# THE 2012 IS F

## BRING ON-RAMPS TO THEIR KNEES.



With the IS F, we engineered a totally different, asphalt-punishing kind of Lexus. It began with a team of Lexus engineers who put performance and power high on the list. They collaborated with Yamaha®, Brembo® and BBS® to help ensure maximum performance, and the results are definitive. A 5.0-liter V8 generates massive 416 horsepower,<sup>1</sup> and an eight-speed Sport Direct-Shift transmission

boasts lightning-fast shift timing. It employs both conventional port- and direct-fuel injection and delivers 0-to-60 mph in a searing 4.6 seconds.<sup>1,2</sup> It even sounds different. Above 3,600 rpm, the engine hungrily sucks in air through a large secondary intake. This unleashes a rush of even more horsepower and creates a deep, attention-grabbing roar from the quad tailpipes.



See disclaimers on page 82.

MODEL INTROS

COCKPIT

PERFORMANCE

INNOVATION

SPECS

SHARPEN YOUR  
COMPETITIVE **EDGE.**



## F SPORT™ PACKAGE

Not all IS sedans are created equal. This F Sport Package is designed to enhance the image of your IS 350 or IS 250, as well as its performance, with exclusive features inspired by those on the IS F—like front-lip and rear-deck spoilers, a more distinctive grille and suspension tuned by the same team that worked on the Lexus LFA. We've also included one additional feature to help take the edge off: heated front sport seats.



See disclaimers on page 82.  
Optional equipment shown.

THE 2012  
**IS**

MODEL INTROS

COCKPIT

PERFORMANCE

INNOVATION

SPECS

SHARPEN YOUR  
COMPETITIVE EDGE.



## F SPORT™ PACKAGE

Not all IS sedans are created equal. This F Sport Package is designed to enhance the image of your IS 350 or IS 250, as well as its performance, with exclusive features inspired by those on the IS F—like front-lip and rear-deck spoilers, a more distinctive grille and suspension tuned by the same team that worked on the Lexus LFA. We've also included one additional feature to help take the edge off: heated front sport seats.



See disclaimers on page 82.  
Optional equipment shown.

THE 2011  
IS

MODEL INTROS

COCKPIT

F PERFORMANCE

INNOVATION

SPECS



AUTHENTIC.  
TRACK-PROVEN.  
EXCLUSIVE.  
F SPORT™ ACCESSORIES<sup>11,12</sup>

Along with the other available accessories and options, Lexus offers F Sport Accessories<sup>11,12</sup> specifically designed for your IS. Track-proven to improve agility, braking distances or responsiveness, these high-grade components are designed to meet the demands of the true performance enthusiast.



See disclaimers on page 82.  
Optional equipment shown.

ISC shown.

MODEL INTROS

COCKPIT

F PERFORMANCE

INNOVATION

SPECS

THE 2012  
IS LINE



Available racing-inspired paddle shifters are conveniently located on the steering wheel, allowing you to quickly upshift or downshift with just a flick of the finger.



Optional equipment shown.

THE WORLD  
OF RACING – RIGHT AT YOUR  
FINGERTIPS.



The IS design was inspired by the world of competitive racing and proof is just an arm's length away. It comes available with a six-speed paddle-shift-sequential automatic transmission that benefits from steering-wheel-mounted paddle shifters. Placed right at your fingertips, they allow you to quickly upshift or downshift without taking your hands off the wheel—a feature professional race-car drivers appreciate. The rear-wheel drive (RWD) IS 250 features a standard six-speed manual transmission. Its close gear ratios and short throws help you get the most dynamic performance out of its responsive V6.

IS 250 and 350 shown.

MODEL INTROS

COCKPIT

PERFORMANCE

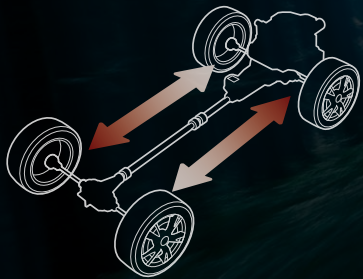
INNOVATION

SPECS



## GET TO KNOW THE ROAD. INTIMATELY.

In the battle against the elements, the IS comes armed with several traction-boosting features. The IS 250 and 350 sedans are available with all-wheel drive. When faced with slick road surfaces, AWD varies engine power to both the front and rear axles based on many factors such as steering, throttle position, and wheel and vehicle speed. This can help provide significantly enhanced traction and control. Across the IS Line, all models include Vehicle Dynamics Integrated Management (VDIM).<sup>18</sup> VDIM uses a sophisticated network of sensors to anticipate a skid even before it occurs. When VDIM detects a potential loss of traction, it seamlessly coordinates steering, braking, Vehicle Stability Control (VSC)<sup>18</sup> and Traction Control (TRAC) to help you maintain command of the vehicle.



THE 2012  
**IS** LINE

MODEL INTROS

COCKPIT

PERFORMANCE

INNOVATION

SPECS

*IS 250 AWD shown.*

See disclaimers on page 82.

ITS 0-TO-60 GETS YOUR  
ATTENTION. BUT ITS 60-TO-0  
IS WHAT REALLY  
STOPS YOU.

Brembo® produced a special braking system<sup>19</sup> for the IS F that features massive six-piston aluminum calipers that clamp 14.2-inch cross-drilled rotors in front and two-piston calipers with 13.6-inch cross-drilled rotors in the rear. The result: brakes as impressive as the IS F engine. Providing impressive braking in their own right, the IS 350 and IS 350 C employ opposed four-piston front calipers on large rotors to better handle the power of their engines.

*IS 350 shown.*  
See disclaimers on page 82.  
Optional equipment shown.



MODEL INTROS

COCKPIT

PERFORMANCE

INNOVATION

SPECS

THE 2012  
IS LINE

PERFORMANCE SEDAN  
OR IDEA LAB?



THE 2012  
IS LINE

It's easy to be innovative for innovation's sake. The hard part is making sure drivers directly benefit. Take, for example, our airbag system.<sup>20</sup> It utilizes dual-stage front airbags<sup>20</sup> designed to inflate at different speeds depending on the severity of impact and the driver's seat-track position. Each IS also comes equipped with a twin-chamber front-passenger airbag<sup>20</sup> that deploys with a slight depression in its center to help disperse the forces applied to the passenger. Just another example of how the IS is engineered to focus on you and your passengers.

INNOVATION  
SENSES  
LEXUS ENFORM®  
- WITH SAFETY CONNECT™  
NAVIGATION

IS 350 shown.

See disclaimers on page 82.  
Optional equipment shown.

MODEL INTROS

COCKPIT

PERFORMANCE

INNOVATION

SPECS

THE 2012  
**IS** LINE

A SONAR AND A CAMERA BEHIND.  
ALL FOCUSED ON ONE  
SINGULAR EXPERIENCE.



Available roof clearance sonar on the IS C monitors the space to the rear of the IS with sensors that automatically prevent roof operation if obstacles are too close. And keeping an eye on things behind the IS is our available backup camera.<sup>21</sup> When the vehicle is placed in reverse, the available NAV screen displays the camera's unique wide-angle view from just above the rear license plate.

*ISC shown.*  
See disclaimers on page 82.  
Optional equipment shown.

MODEL INTROS

COCKPIT

PERFORMANCE

INNOVATION

SPECS



## LEXUS ENFORM®

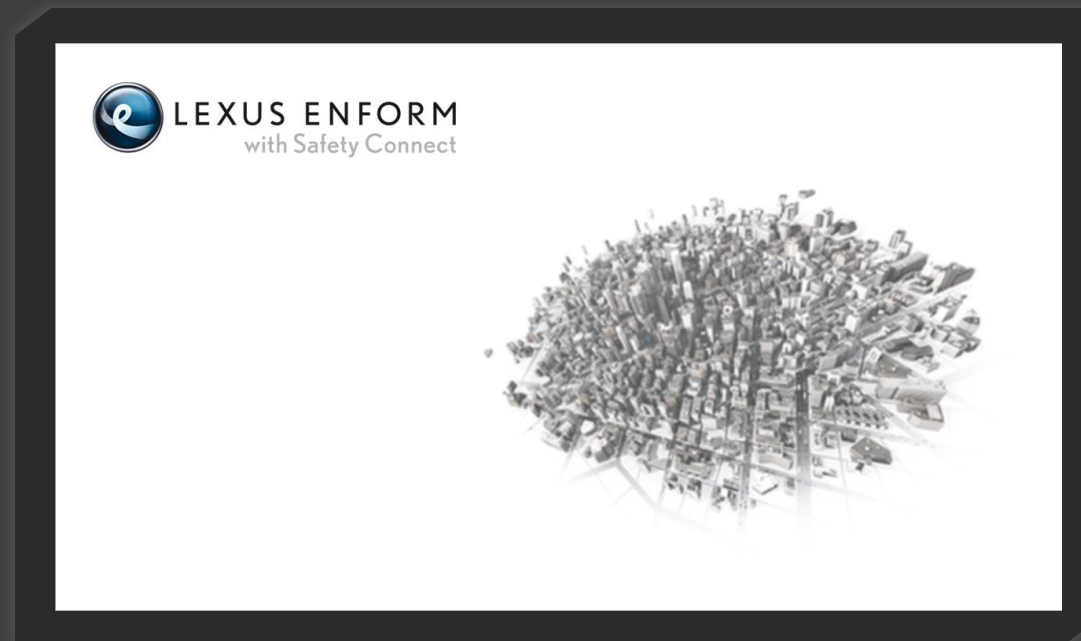
# DESIGNED TO HELP SIMPLIFY YOUR LIFE.

With the available Lexus Enform<sup>5,6</sup> system, you can speak to a live service agent, 24 hours a day, seven days a week. You don't have to memorize any numbers, navigate through seemingly endless screens—or even have your cell phone with you. Need an address? Simply select Destination Assist on the available Navigation System<sup>4</sup> for live assistance. Once you've decided on a location, your agent can send the turn-by-turn directions straight to your vehicle's Navigation System.<sup>4</sup> Planning a trip? You also have the option of pre-selecting up to 200 destinations yourself online and having them all sent to your vehicle.

## SAFETY CONNECT®

# DESIGNED TO HELP SAFEGUARD YOUR LIFE.

With Safety Connect<sup>5,22</sup> you can request emergency help, whether that means assisting the police with locating your stolen vehicle or requesting Enhanced Roadside Assistance<sup>23</sup> for a flat tire. The Safety Connect<sup>5,22</sup> service (one-year subscription included) also features Automatic Collision Notification, which automatically sends a call for help the moment the system senses the vehicle has been in a severe rear-end collision or the airbags<sup>20</sup> have been deployed.





The IS's available voice-activated Hard Disk Drive (HDD) Navigation System<sup>4</sup> is our most advanced to date. It features available Sports and Stocks<sup>4,24</sup> for scores and market updates, as well as available NavTraffic<sup>TM4,24</sup> that provides real-time traffic reports on specific roads and can reroute you around congestion. It also features available NavWeather<sup>TM4,24</sup> that can give you real-time weather reports and automatically alert you of severe weather. Meaning you can spend more quality time in your IS with less threat from congested roads and stormy conditions.\*

*IS 350 shown.*

\*Be sure to obey traffic regulations and maintain awareness of road and traffic conditions.



THE 2012  
**IS** LINE

HANDLES CONGESTION  
AS DEFTLY AS CURVES.

See disclaimers on page 82.  
Optional equipment shown.

MODEL INTROS

COCKPIT

PERFORMANCE

INNOVATION

SPECS

WE'RE CREATING  
INNOVATIONS EVERY DAY.  
STAY INFORMED OF THEM EVERY MONTH.

With so much happening at Lexus, it's hard to keep up. That's why we created the Lexus Pursuit newsletter. This monthly e-mail provides subscribers with exclusive information about upcoming model launches and events, as well as news, innovations and offers. Sign up today and stay informed of all things Lexus.



THE 2012  
IS  
LINE

*IS 350 shown.*  
See disclaimers on page 82.  
Optional equipment shown.

MODEL INTROS

COCKPIT

PERFORMANCE

INNOVATION

SPECS

# THE 2011 IS



IS350  
AWD    IS350    IS250  
AWD    IS250    IS250  
MANUAL

The racing-inspired IS 250 and IS 350.

3.5-liter 306-horsepower<sup>1</sup> V6 (IS 350). 2.5-liter 204-horsepower<sup>1</sup> V6 (IS 250). Direct injection. Available six-speed automatic with sequential-shift paddle shifters. Four-wheel disc brakes. Dual Variable Valve Timing with intelligence (VVT-i). Available F Sport™ suspension. Rear-wheel drive. Available all-wheel drive. Push-button start. Leather-trimmed interior. Available Mark Levinson® Premium Surround Sound Audio System.<sup>3</sup> Available backup camera.<sup>21</sup> Dual-zone automatic climate control. Available heated/ventilated front seats

# THE 2011 ISC



IS 350 C    IS 250 C    IS 250 C  
MANUAL

The uninhibited IS Convertible.

Three-piece aluminum retractable hardtop. Available roof clearance sonar. Available one-touch rear-seat access. Side-impact airbags.<sup>20</sup> Highly rigid, convertible-specific reinforced structure. Convertible-optimized steering, suspension, climate and audio systems. Hill-start Assist<sup>25</sup> for automatic and manual transmission. 3.5-liter 306-horsepower<sup>1</sup> V6 (IS 350 C). 2.5-liter 204-horsepower<sup>1</sup> V6 (IS 250 C). Four-wheel disc brakes. Dual Variable Valve Timing with intelligence (VVT-i). Rear-wheel drive. Push-button start. Available Mark Levinson Premium Surround Sound Audio System.<sup>3</sup> Available backup camera.<sup>21</sup> Available heated and ventilated front seats specific to the IS C



# THE 2011 IS F

IS F

The imposingly powerful IS F.

V8 engine. 416-horsepower.<sup>1</sup> 371 lb-ft of torque.<sup>1</sup> Titanium intake valves. Eight-speed Sport Direct-Shift transmission. Sequential paddle shifters. Limited-slip differential. Brembo® disc brakes.<sup>19</sup> BBS® 19-inch forged alloy wheels.<sup>16</sup> Quad tail pipes. Two-stage intake system. Vehicle Dynamics Integrated Management (VDIM)<sup>18</sup> with Sport mode. Available Navigation System.<sup>4</sup> Available Alcantara®-trimmed interior. Available Dynamic Radar Cruise Control<sup>26</sup>

See disclaimers on page 82.  
Optional equipment shown.



# IS SEDAN COLOR AND TRIM



## INTERIOR COLORS AND TRIM



## COLOR AVAILABILITY

	Ecru Leather	Light Gray Leather	Black Leather
Tungsten Pearl		■	■
Starfire Pearl	■	■	■
Cerulean Blue Metallic	■	■	■
Ultrasonic Blue Mica*			■
Matador Red Mica	■	■	■
Deep Sea Mica	■	■	■
Nebula Gray Pearl	■	■	■
Obsidian	■	■	■
Fire Agate Pearl	■		■
Espresso Bird's-Eye Maple Wood Trim*	■		
Dark Gray Bird's-Eye Maple Wood Trim*		■	■
Black Metallic Finish	■	■	■
Silver Metallic Finish*			■

\*Available

Optional equipment shown.

SHOULDER ROOM  
front/rear  
54.4/52.7 in (1,381/1,339 mm)

HIP ROOM  
front/rear  
54.1/53.7 in (1,374/1,364 mm)

HEADROOM  
front/rear  
37.2/36.7 in (946/932 mm)

HEIGHT  
55.7 in (1,415 mm) (RWD)  
56.3 in (1,430 mm) (AWD)



WIDTH 70.9 in (1,800 mm)

TRUNK CAPACITY 13.3 cu ft (378 L)

FUEL-TANK CAPACITY 17.2 gal (65 L)

LEG ROOM  
front/rear  
43.9/30.6 in (1,115/777 mm)



WHEELBASE 107.5 in (2,731 mm)

OVERALL LENGTH 180.3 in (4,580 mm)

## IS BODY AND DIMENSIONS

See disclaimers on page 82.  
Optional equipment shown.

## IS WHEEL SELECTION



17-in 10-spoke alloy wheels<sup>27</sup>  
STANDARD



18-in five-spoke alloy wheels  
(RWD)<sup>13</sup> with Liquid Graphite finish  
AVAILABLE



19-in F Sport<sup>TM11,12</sup>  
full-face forged alloy wheels<sup>16</sup>  
AVAILABLE



18-in ISP Mode alloy wheels<sup>13</sup>  
AVAILABLE (RWD)



18-in G-Spider alloy wheels<sup>13</sup>  
AVAILABLE (RWD)



19-in (RWD)<sup>16</sup> or 18-in (AWD)<sup>13</sup>  
F Sport<sup>TM11,12</sup> forged alloy wheels  
AVAILABLE

# IS SPECIFICATIONS

## ENGINE

<b>ENGINE</b>	<b>IS 350 / IS 350 AWD</b>
Type	60° V6, aluminum block and heads, direct and port fuel injection
Displacement	3.5 liters (210 cubic inches)
Valvetrain	Four cam, four valves per cylinder, with dual Variable Valve Timing with intelligence (VVT-i)
Compression Ratio	11.8:1
Horsepower at RPM	306 @ 6,400 <sup>1</sup>
Torque at RPM	277 lb-ft @ 4,800 <sup>1</sup>
Emission Rating	Certified Ultra-Low Emission Vehicle (ULEV II)
<b>ENGINE</b>	<b>IS 250</b>
Type	60° V6, aluminum block and heads, direct fuel injection
Displacement	2.5 liters (152 cubic inches)
Valvetrain	Four cam, four valves per cylinder, with dual Variable Valve Timing with intelligence (VVT-i)
Compression Ratio	12.0:1
Horsepower at RPM	204 @ 6,400 <sup>1</sup>
Torque at RPM	185 lb-ft @ 4,800 <sup>1</sup>
Emission Rating	Certified Ultra-Low Emission Vehicle (ULEV II)

## PERFORMANCE

<b>PERFORMANCE</b>	<b>IS 350 / IS 350 AWD</b>	<b>PERFORMANCE</b>	<b>IS 250 A/T RWD</b>
0-60 MPH Acceleration	5.6 seconds <sup>1,2</sup>	0-60 MPH Acceleration	7.9 seconds <sup>1,2</sup>
1/4 Mile Acceleration	5.7 seconds <sup>1,2</sup> (IS 350 AWD)	1/4 Mile Acceleration	16.0 seconds <sup>1,2</sup>
Top Track Speed (electronically limited)	13.9 seconds <sup>1,2</sup>	Top Track Speed (electronically limited)	140 mph <sup>1,2</sup>
EPA Fuel Economy Estimates (city/highway/combined)	14.1 seconds <sup>1,2</sup> (IS 350 AWD)	EPA Fuel Economy Estimates (city/highway/combined)	21/30/25 mpg <sup>28</sup>
Aerodynamic Drag Coefficient	144 mph <sup>1,2</sup>	Aerodynamic Drag Coefficient	0.28
Turning Circle	131 mph <sup>1,2</sup> (IS 350 AWD)	Turning Circle	33.5 ft
	18/26/21 mpg <sup>28</sup> (AWD)		
	33.5 ft (RWD)		
	34.8 ft (AWD)		
<b>PERFORMANCE</b>	<b>IS 250 M/TRWD</b>	<b>PERFORMANCE</b>	<b>IS 250 AWD</b>
0-60 MPH Acceleration	7.9 seconds <sup>1,2</sup>	0-60 MPH Acceleration	8.3 seconds <sup>1,2</sup>
1/4 Mile Acceleration	16.0 seconds <sup>1,2</sup>	1/4 Mile Acceleration	16.3 seconds <sup>1,2</sup>
Top Track Speed (electronically limited)	144 mph <sup>1,2</sup>	Top Track Speed (electronically limited)	131 mph <sup>1,2</sup>
EPA Fuel Economy Estimates (city/highway/combined)	19/28/22 mpg <sup>28</sup>	EPA Fuel Economy Estimates (city/highway/combined)	20/27/22 mpg <sup>28</sup>
Aerodynamic Drag Coefficient	0.28	Aerodynamic Drag Coefficient	0.28
Turning Circle	33.5 ft	Turning Circle	34.8 ft

## DRIVETRAIN

<b>DRIVETRAIN</b>	<b>IS 350 RWD</b>
Transmission	Six-speed paddle-shift-sequential automatic Electronically Controlled Transmission with intelligence (ECT-i)
Drive Wheels	Rear-wheel drive
Final Drive Ratio	4.083:1
<b>DRIVETRAIN</b>	<b>IS 350 AWD</b>
Transmission	Six-speed paddle-shift-sequential automatic Electronically Controlled Transmission with intelligence (ECT-i)
Drive Wheels	Full-time all-wheel drive
Final Drive Ratio	4.100:1
<b>DRIVETRAIN</b>	<b>IS 250 A/T RWD</b>
Transmission	Six-speed paddle-shift sequential automatic Electronically Controlled Transmission with intelligence (ECT-i)
Drive Wheels	Rear-wheel drive
Final Drive Ratio	3.909:1
<b>DRIVETRAIN</b>	<b>IS 250 M/T RWD</b>
Transmission	Six-speed manual transmission
Drive Wheels	Rear-wheel drive
Final Drive Ratio	3.727:1
<b>DRIVETRAIN</b>	<b>IS 250 AWD</b>
Transmission	Six-speed paddle-shift sequential automatic Electronically Controlled Transmission with intelligence (ECT-i)
Drive Wheels	Full-time all-wheel drive
Final Drive Ratio	4.100:1

## GENERAL

Type	Five-passenger luxury sport sedan
Construction	Welded steel unibody
Curb weight	IS 350 3,527 lb (1,600 kg) IS 350 AWD 3,703 lb (1,656 kg) IS 250 M/T RWD 3,455 lb (1,567 kg) IS 250 A/T RWD 3,435 lb (1,558 kg) IS 250 AWD 3,651 lb (1,656 kg)

## CHASSIS

<b>CHASSIS</b>	<b>IS 350</b>
Suspension (front)	Independent, double-wishbone with coil springs, monotube gas-pressurized shock absorbers and hollow stabilizer bar
Suspension (rear)	Independent, multi-link with coil springs, inverted monotube gas-pressurized shock absorbers and stabilizer bar
Steering	Electronic Power Steering (EPS) system. 2.9 turns lock to lock
Brakes	Four-wheel power-assisted discs, four-sensor, four-channel Anti-lock Braking System (ABS), Electronic Brakeforce Distribution (EBD) and Brake Assist <sup>29</sup>
Brake Size	Four-piston front calipers. 13.1-in front, 12.2-in rear ventilated discs
Wheels and Tires	17 x 8.0-in 10-spoke alloy wheels with 225/45VR17 all-season tires <sup>27</sup> front, 245/45VR17 all-season tires rear <sup>27</sup> (RWD) 17 x 8.0-in 10-spoke alloy wheels with 225/45VR17 all-season tires <sup>27</sup> (AWD)

<b>CHASSIS</b>	<b>IS 250</b>
Suspension (front)	Independent, double-wishbone with coil springs, monotube gas-pressurized shock absorbers and hollow stabilizer bar
Suspension (rear)	Independent, multi-link with coil springs, inverted monotube gas-pressurized shock absorbers and stabilizer bar
Steering	Electronic Power Steering (EPS) system. 2.9 turns lock to lock
Brakes	Four-wheel power-assisted discs, four-sensor, four-channel Anti-lock Braking System (ABS), Electronic Brakeforce Distribution (EBD) and Brake Assist <sup>29</sup>
Brake Size	Two-piston front calipers. 11.6-in ventilated front, 11.4-in solid rear discs
Wheels and Tires	17 x 8.0-in 10-spoke alloy wheels with 225/45VR17 all-season tires <sup>27</sup> front, 245/45VR17 all-season tires rear <sup>27</sup> (RWD) 17 x 8.0-in 10-spoke alloy wheels with 225/45VR17 all-season tires <sup>27</sup> (AWD)

## IS STANDARD LUXURY FEATURES

### LUXURY AND CONVENIENCE

- SmartAccess<sup>9,10</sup> with push-button Start/Stop
- Dual-zone automatic climate control with interior air filter (IS 250)
- Dual-zone automatic climate control with interior air filter, smog sensor and automatic recirculation mode (IS 350)
- Tilt-and-telescopic steering column
- Power tilt-and-slide moonroof with one-touch open/close and sliding sunshade
- Power windows with one-touch auto open/close
- Remote-linked window and moonroof opening
- Retained accessory power for windows and moonroof
- Electrochromic (auto-dimming) inside rearview mirror
- Power door locks
- Cruise control
- Center console with sliding armrest, storage bin, USB and minijack input and accessory power outlet
- Foldable front-door storage pockets
- HomeLink<sup>®</sup> universal transceiver to operate compatible garage, gate, home lighting and home security systems
- Illuminated entry system
- Dual chrome exhaust outlets
- Trunk pass-through

## SEATING AND TRIM

---

Black metallic finish interior trim  
Leather-trimmed interior  
Leather-trimmed steering wheel and shift knob  
10-way driver's and front passenger's (including lumbar) power seats  
Heated front seats (IS 250 AWD & IS 350 AWD)  
Height-adjustable headrests for all seats with foldable rear headrests

## COMMUNICATION, AUDIO AND NAVIGATION

---

Lexus 13-speaker Premium Sound System with Automatic Sound Levelizer (ASL) and in-dash, single-feed, six-disc CD auto-changer  
SiriusXM Satellite Radio<sup>4,24</sup> Subscription required. 90-day trial subscription included  
USB and auxiliary iPod<sup>®7</sup>/MP3/Windows Media<sup>®</sup> Audio (WMA) port  
*Bluetooth*<sup>®</sup> technology<sup>30</sup>  
*Bluetooth* audio<sup>8</sup> profile for wireless integration of compatible music players with in-vehicle audio system controls

## INSTRUMENTATION AND CONTROL

---

Steering-wheel-mounted audio, phone and display controls  
Electroluminescent instrumentation with start-up sequence  
Automatic on/off projector-beam headlamps with 30-second delay  
Illuminated interior electronic trunk-lid and fuel-filler door releases  
Lexus Personalized Settings (LPS)<sup>31</sup> to customize select electronic functions

## IS STANDARD SAFETY AND SECURITY FEATURES

### ACTIVE SAFETY

---

Vehicle Dynamics Integrated Management (VDIM)<sup>18</sup> with cutoff switch  
Traction Control (TRAC)  
Four-wheel power-assisted disc brakes  
Four-sensor, four-channel Anti-lock Braking System  
Brake Assist<sup>29</sup>  
Electronic Brakeforce Distribution (EBD)  
Bi-Xenon<sup>™</sup> High-Intensity Discharge (HID) headlamps with dynamic auto-leveling and LED daytime running lights (IS 350)  
Direct Tire Pressure Monitor System<sup>32</sup>  
Water-repellent front-door glass  
Daytime running lights  
Integrated foglamps  
LED taillamps  
Variable intermittent windshield wipers with mist cycle  
Rear-window defogger with auto-off timer  
Power-adjustable outside mirrors with defoggers and puddle lamps; integrated turn indicators  
Smart Stop Technology<sup>33</sup>

### PASSIVE SAFETY

---

Driver's and front passenger's advanced airbag system (SRS)<sup>20</sup> with front passenger's twin-chamber airbag (SRS)<sup>20</sup>  
Front seat-mounted side airbags (SRS)<sup>20</sup>  
Front and rear side curtain airbags (SRS)<sup>20</sup>  
Driver's and front passenger's knee airbags (SRS)<sup>20</sup>  
Three-point seatbelts for all seating positions, pre-tensioners with force limiters for front and outboard rear seats  
Automatic Locking Retractor/Emergency Locking Retractor (ALR/ELR) seatbelts for all passenger seating positions.  
Emergency Locking Retractor (ELR) only for driver's seat  
Height-adjustable front shoulder belt anchors  
Child Restraint Seat (CRS) tether anchor brackets for rear outboard seating positions  
Highly rigid body structure with front and rear crumple zones  
Side-impact door beams  
Reinforcements in pillars  
Impact-dissipating upper interior trim  
Collapsible steering column

### SECURITY

---

Safety Connect<sup>®5,22</sup> offers Automatic Collision Notification, Stolen Vehicle Location, an Emergency Assistance Button (SOS) and Enhanced Roadside Assistance<sup>23</sup> connectivity. Subscription required. One-year trial subscription included  
Vehicle theft-deterrent and engine immobilizer system<sup>10</sup>  
Tool kit  
First aid kit  
Emergency interior trunk release

See disclaimers on page 82.

# ISC COLOR AND TRIM



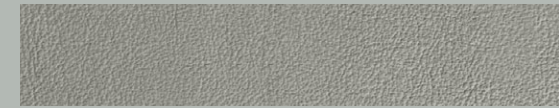
## INTERIOR COLORS AND TRIM



Black Leather



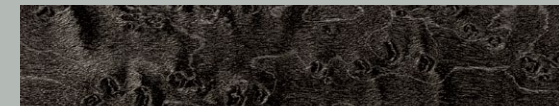
Alabaster Leather



Light Gray Leather\*



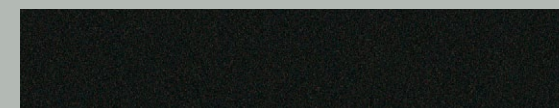
Saddle Leather\*



Dark Gray Bird's-Eye Maple Wood Trim\*



Espresso Bird's-Eye Maple Wood Trim\*



Black Metallic Finish

## COLOR AVAILABILITY

	Black Leather	Alabaster Leather	Light Gray Leather*	Saddle Leather*
Tungsten Pearl	■	■	■	■
Starfire Pearl	■	■	■	■
Deep Sea Mica	■	■	■	■
Cerulean Blue Metallic	■	■	■	■
Matador Red Mica	■	■	■	■
Nebula Gray Pearl	■	■	■	■
Obsidian	■	■	■	■
Dark Gray Bird's-Eye Maple Wood Trim*	■		■	
Espresso Bird's-Eye Maple Wood Trim*				■
Black Metallic Finish	■	■		

\*Luxury Package required.

Optional equipment shown.

SHOULDER ROOM  
front/rear  
54.2/44.7 in (1,378/1,136 mm)

HIP ROOM  
front/rear  
54.3/43.3 in (1,378/1,101 mm)

HEADROOM  
front/rear  
38.3/36.1 in (974/918 mm)

HEIGHT  
55.7 in (1,415 mm)

WIDTH 70.9 in (1,800 mm)



LEG ROOM  
front/rear  
44.1/25.9 in (1,121/658 mm)

FUEL-TANK CAPACITY 17.2 gal (65 L)

TRUNK CAPACITY  
10.8 cu ft (306 L, top up)



WHEELBASE 107.5 in (2,730 mm)

OVERALL LENGTH 182.5 in (4,635 mm)

## ISC BODY AND DIMENSIONS

See disclaimers on page 82.  
Optional equipment shown.

## ISC WHEEL SELECTION



17-in 10-spoke alloy wheels<sup>27</sup>  
STANDARD



18-in five-spoke alloy wheels<sup>13</sup>  
with Liquid Graphite finish  
AVAILABLE



19-in F Sport<sup>TM11,12</sup> full-face forged  
alloy wheels<sup>16</sup> AVAILABLE



18-in ISP Mode alloy wheels<sup>13</sup>  
AVAILABLE



18-in G-Spider alloy wheels<sup>13</sup>  
AVAILABLE



19-in F Sport<sup>TM11,12</sup> 10-spoke forged  
alloy wheels<sup>16</sup> AVAILABLE

# IS C SPECIFICATIONS

## ENGINE

<b>ENGINE</b>	<b>IS 350 C</b>
Type	60° V6, aluminum block and heads, direct and port fuel injection
Displacement	3.5 liters (210 cubic inches)
Valvetrain	Four cam, four valves per cylinder, with dual Variable Valve Timing with intelligence (VVT-i)
Compression Ratio	11.8:1
Horsepower at RPM	306 @ 6,400 <sup>1</sup>
Torque at RPM	277 lb-ft @ 4,800 <sup>1</sup>
Emission Rating	Certified Ultra-Low Emission Vehicle (ULEV II)

<b>ENGINE</b>	<b>IS 250 C</b>
Type	60° V6, aluminum block and heads, direct fuel injection
Displacement	2.5 liters (152 cubic inches)
Valvetrain	Four cam, four valves per cylinder, with dual Variable Valve Timing with intelligence (VVT-i)
Compression Ratio	12.0:1
Horsepower at RPM	204 @ 6,400 <sup>1</sup>
Torque at RPM	185 lb-ft @ 4,800 <sup>1</sup>
Emission Rating	Certified Ultra-Low Emission Vehicle (ULEV II)

## PERFORMANCE

<b>PERFORMANCE</b>	<b>IS 350 C</b>	<b>PERFORMANCE</b>	<b>IS 250 C</b>
0-60 MPH Acceleration	5.8 seconds <sup>1,2</sup>	0-60 MPH Acceleration	8.4 seconds <sup>1,2</sup>
1/4 Mile Acceleration	14.1 seconds <sup>1,2</sup>	1/4 Mile Acceleration	16.4 seconds <sup>1,2</sup>
Top Track Speed (electronically limited)	141 mph <sup>1,2</sup>	Top Track Speed (electronically limited)	131 mph <sup>1,2</sup>
EPA Fuel Economy Estimates (city/highway/combined)	19/27/22 mpg <sup>28</sup>	EPA Fuel Economy Estimates (city/highway/combined)	21/30/25 mpg <sup>28</sup>
Aerodynamic Drag Coefficient	0.29	Aerodynamic Drag Coefficient	0.29
Turning Circle	33.5 ft	Turning Circle	33.5 ft

<b>PERFORMANCE</b>	<b>IS 250 C Manual</b>
0-60 MPH Acceleration	8.4 seconds <sup>1,2</sup>
1/4 Mile Acceleration	16.5 seconds <sup>1,2</sup>
Top Track Speed (electronically limited)	134 mph <sup>1,2</sup>
EPA Fuel Economy Estimates (city/highway/combined)	19/28/22 mpg <sup>28</sup>
Aerodynamic Drag Coefficient	0.29
Turning Circle	33.5 ft

## DRIVETRAIN

<b>DRIVETRAIN</b>	<b>IS 350 C</b>
Transmission	Six-speed paddle-shift-sequential automatic Electronically Controlled Transmission with intelligence (ECT-i)
Drive Wheels	Rear-wheel drive
Final Drive Ratio	4.083:1

<b>DRIVETRAIN</b>	<b>IS 250 C</b>
Transmission	Six-speed paddle-shift-sequential automatic Electronically Controlled Transmission with intelligence (ECT-i)
Drive Wheels	Rear-wheel drive
Final Drive Ratio	3.909:1

<b>DRIVETRAIN</b>	<b>IS 250 C Manual</b>
Transmission	Six-speed manual transmission
Drive Wheels	Rear-wheel drive
Final Drive Ratio	3.727:1

## GENERAL

Type	Four-passenger retractable hardtop luxury sport convertible coupe
Construction	Welded steel unibody
Curb weight	IS 350 C 3,880 lb (1,760 kg) IS 250 C M/T 3,840 lb (1,742 kg) IS 250 C A/T 3,814 lb (1,730 kg)



## CHASSIS

<b>CHASSIS</b>	<b>IS 350 C</b>
Suspension (front)	Independent, double-wishbone with coil springs, monotube gas-pressurized shock absorbers and hollow stabilizer bar
Suspension (rear)	Independent, multi-link with coil springs, inverted monotube gas-pressurized shock absorbers and stabilizer bar
Steering	Electronic Power Steering (EPS) system. 3.2 turns lock to lock
Brakes	Four-wheel power-assisted discs, four-sensor, four-channel Anti-lock Braking System (ABS), Electronic Brakeforce Distribution (EBD) and Brake Assist <sup>29</sup>
Brake Size	Four-piston front calipers. 13.1-in front, 12.2-in rear ventilated discs
Wheels and Tires	17 x 8.0-in 10-spoke alloy wheels with 225/45VR17 all-season tires <sup>27</sup> front, 245/45VR17 all-season tires <sup>27</sup> rear
<b>CHASSIS</b>	<b>IS 250 C</b>
Suspension (front)	Independent, double-wishbone with coil springs, monotube gas-pressurized shock absorbers and hollow stabilizer bar
Suspension (rear)	Independent, multi-link with coil springs, inverted monotube gas-pressurized shock absorbers and stabilizer bar
Steering	Electronic Power Steering (EPS) system. 3.2 turns lock to lock
Brakes	Four-wheel power-assisted discs, four-sensor, four-channel Anti-lock Braking System (ABS), Electronic Brakeforce Distribution (EBD) and Brake Assist <sup>29</sup>
Wheels and Tires	Two-piston front calipers. 11.6-in front, 12.2-in rear ventilated discs 17 x 8.0-in 10-spoke alloy wheels with 225/45VR17 all-season tires <sup>27</sup> front, 245/45VR17 all-season tires <sup>27</sup> rear

## IS C STANDARD LUXURY FEATURES

### LUXURY AND CONVENIENCE

SmartAccess <sup>9,10</sup> with push-button Start/Stop
Dual-zone automatic climate control with interior air filter (IS 250 C)
Dual-zone automatic climate control with interior air filter, smog sensor and automatic recirculation mode (IS 350 C)
Power tilt-and-telescopic steering column
Power-retractable folding hardtop
Power windows with front one-touch auto open/close
Remote-linked window opening
Retained accessory power for windows
Electrochromic (auto-dimming) inside rearview mirror
Power door locks
Cruise control
Center console with sliding armrest, storage bin, USB and minijack input, and accessory power outlet
Front-door storage pockets
HomeLink <sup>®</sup> universal transceiver to operate compatible garage, gate, home lighting and home security systems
Illuminated entry system
Dual chrome exhaust outlets

## SEATING AND TRIM

---

Black metallic finish interior trim  
Leather-trimmed interior  
Leather-trimmed steering wheel and shift knob  
10-way driver's and front passenger's (including lumbar) power seats  
Easy-entry power front-passenger seat slide  
Height-adjustable front headrests and remote-foldable rear headrests

## COMMUNICATION, AUDIO AND NAVIGATION

---

Lexus eight-speaker Premium Sound System with Automatic Sound Levelizer (ASL) and in-dash, single-feed, six-disc CD auto-changer  
SiriusXM Satellite Radio<sup>4,24</sup> Subscription required. 90-day trial subscription included  
USB and auxiliary iPod<sup>®7</sup>/MP3/Windows Media<sup>®</sup> Audio (WMA) port  
*Bluetooth*<sup>®</sup> technology<sup>30</sup>  
*Bluetooth* audio<sup>8</sup> profile for wireless integration of compatible music players with in-vehicle audio system controls

## INSTRUMENTATION AND CONTROL

---

Steering-wheel-mounted audio, phone and display controls  
Electroluminescent instrumentation with startup sequence  
Automatic on/off projector-beam headlamps  
Illuminated interior electronic trunk-lid and fuel-filler door releases  
Lexus Personalized Settings (LPS)<sup>31</sup> to customize select electronic functions

# IS C STANDARD SAFETY AND SECURITY FEATURES

## ACTIVE SAFETY

---

Vehicle Dynamics Integrated Management (VDIM)<sup>18</sup> with cutoff switch  
Traction Control (TRAC)  
Four-wheel power-assisted disc brakes  
Four-sensor, four-channel Anti-lock Braking System  
Brake Assist<sup>29</sup>  
Electronic Brakeforce Distribution (EBD)  
Direct Tire Pressure Monitor System<sup>32</sup>  
Water-repellent front-door glass  
Daytime running lights  
Integrated foglamps  
LED taillamps  
Variable intermittent windshield wipers with mist cycle  
Rear-window defogger with auto-off timer  
Power-adjustable outside mirrors with defoggers and puddle lamps; and integrated turn indicators  
Smart Stop Technology<sup>33</sup>

## PASSIVE SAFETY

---

Driver's and front passenger's advanced airbag system (SRS)<sup>20</sup> with front passenger's twin-chamber airbag (SRS)<sup>20</sup>  
Front seat-mounted side airbags (SRS),<sup>20</sup> enlarged for head and torso protection  
Driver's and front passenger's knee airbags (SRS)<sup>20</sup>  
Three-point seatbelts for all seating positions, pre-tensioners with force limiters for front seats  
Automatic Locking Retractor/Emergency Locking Retractor (ALR/ELR) seatbelts for all passenger seating positions. Emergency Locking Retractor (ELR) only for driver's seat  
Child Restraint Seat (CRS) tether anchor brackets for rear seating positions  
Highly rigid body structure with front and rear crumple zones  
Side-impact door beams  
Reinforcements in pillars, rocker panels, rear body and doors  
Impact-dissipating upper interior trim  
Collapsible steering column

## SECURITY

---

Safety Connect<sup>®5,22</sup> offers Automatic Collision Notification, Stolen Vehicle Location, an Emergency Assistance Button (SOS) and Enhanced Roadside Assistance<sup>23</sup> services. Subscription required.  
One-year trial subscription included  
Vehicle theft-deterrent and engine-immobilizer system<sup>10</sup>  
Emergency interior trunk release  
Tool kit  
First aid kit

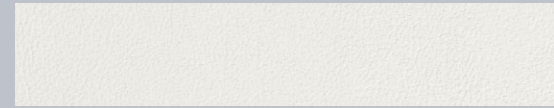
# IS F COLOR AND TRIM



## INTERIOR COLORS AND TRIM



Black Leather



Alpine Leather



Red Leather



Dark Aluminized Composite Trim

## COLOR AVAILABILITY

	Black Leather	Alpine Leather	Red Leather
Mercury Metallic	<input type="checkbox"/>	<input type="checkbox"/>	<input type="checkbox"/>
Starfire Pearl	<input type="checkbox"/>	<input type="checkbox"/>	<input type="checkbox"/>
Matador Red Mica	<input type="checkbox"/>	<input type="checkbox"/>	<input type="checkbox"/>
Ultrasonic Blue Mica	<input type="checkbox"/>	<input type="checkbox"/>	<input type="checkbox"/>
Nebula Gray Pearl	<input type="checkbox"/>	<input type="checkbox"/>	<input type="checkbox"/>
Obsidian	<input type="checkbox"/>	<input type="checkbox"/>	<input type="checkbox"/>
Dark Aluminized Composite Trim	<input type="checkbox"/>	<input type="checkbox"/>	<input type="checkbox"/>

SHOULDER ROOM  
front/rear  
54.4/52.7 in (1,381/1,338 mm)

HIP ROOM  
front/rear  
54.1/53.7 in (1,374/1,364 mm)

HEADROOM  
front/rear  
37.2/36.7 in (946/932 mm)

HEIGHT  
55.7 in (1,415 mm)

WIDTH 71.5 in (1,815 mm)



TRUNK CAPACITY 13.3 cu ft (377 L)

FUEL-TANK CAPACITY 16.9 gal (64 L)

LEG ROOM  
front/rear  
43.9/30.6 in (1,115/777 mm)



WHEELBASE 107.4 in (2,730 mm)

OVERALL LENGTH 183.4 in (4,660 mm)

## IS F BODY AND DIMENSIONS

See disclaimers on page 82.

## IS F WHEEL



19-in forged alloy wheels<sup>16</sup>  
manufactured by BBS®

MODEL INTROS

COCKPIT

PERFORMANCE

INNOVATION

SPECS

# IS F SPECIFICATIONS

## ENGINE

Type	90° V8, aluminum block and heads, direct and port fuel injection
Displacement	5.0 liters (303 cubic inches)
Valvetrain	Four cam, four valves per cylinder, with dual Variable Valve Timing with intelligence and Electronic intake valve timing (VVT-iE)
Compression Ratio	11.8:1
Horsepower at RPM	416 hp @ 6,600 <sup>1</sup>
Torque at RPM	371 lb-ft @ 5,200 <sup>1</sup>
Emission Rating	Certified Ultra-Low Emission Vehicle (ULEV II)

## PERFORMANCE

0-60 MPH Acceleration	4.6 seconds <sup>1,2</sup>
1/4 Mile Acceleration	13.0 seconds <sup>1,2</sup>
Top Track Speed (electronically limited)	170 mph <sup>1,2</sup>
EPA Fuel Economy Estimates (city/highway/combined)	16/23/18 mpg <sup>28</sup>
Aerodynamic Drag Coefficient	0.30
Turning Circle	33.5 ft

## DRIVETRAIN

Transmission	Eight-speed Sport Direct-Shift automatic transmission with paddle shifters, Manual mode and torque converter lock-up for gears 2-8
Drive Wheels	Rear-wheel drive
Rear Differential	TORSEN® torque-sensing limited-slip <sup>34</sup>

## GENERAL

Type	Four passenger high-performance luxury sport sedan
Construction	Welded steel unibody
Curb weight	3,780 lb (1,715 kg)

## CHASSIS

Suspension (front)	Independent, double-wishbone with high-mount upper arms, coil springs, monotube gas-pressurized shock absorbers and hollow stabilizer bar
Suspension (rear)	Independent, multi-link with low-mount upper arms, coil springs, monotube gas-pressurized shock absorbers and stabilizer bar
Steering	Electronic Power Steering (EPS), vehicle speed-sensing coaxial rack and pinion, power assist, 2.9 turns, lock to lock
Brakes	Four-wheel power-assisted discs manufactured by Brembo, <sup>®19</sup> with four-sensor, four-channel Anti-lock Braking System (ABS), Electronic Brakeforce Distribution (EBD) and Brake Assist <sup>29</sup> 14.2-in drilled and ventilated front discs with six-piston-opposed aluminum calipers and high-friction brake pads, <sup>19</sup> 13.6-in drilled and ventilated rear discs with two-piston-opposed aluminum calipers and high-friction brake pads <sup>19</sup>
Wheels and Tires (front)	19 x 8.5-in forged aluminum alloy wheels manufactured by BBS with 225/40YR19 summer tires <sup>16</sup>
Wheels and Tires (rear)	19 x 9.5-in forged aluminum alloy wheels manufactured by BBS with 255/35YR19 summer tires <sup>16</sup>

## IS F STANDARD LUXURY FEATURES

### LUXURY AND CONVENIENCE

SmartAccess<sup>9,10</sup> with push-button Start/Stop

Dual-zone automatic climate control with interior air filter and smog sensor and automatic recirculation mode

Power tilt-and-telescopic steering column

Lexus Memory System to control power driver's and front passenger's seat (except lumbar), outside mirrors and steering wheel

Power tilt-and-slide moonroof with one-touch open/close and sliding sunshade

Power windows with one-touch auto open/close

Remote-linked window and moonroof opening (if equipped)

Retained accessory power for windows and moonroof (if equipped)

Power door locks

Electrochromic (auto-dimming) inside rearview mirror and outside mirrors

Cruise control

Center console with sliding armrest, storage bin, USB and minijack input, and accessory power outlet

Foldable front-door storage pockets

HomeLink<sup>®</sup> universal transceiver to operate compatible garage, gate, home lighting and home security systems

Lexus Personalized Settings (LPS)<sup>31</sup> to customize select electronic functions

Illuminated entry system

Rear spoiler

Quad chrome exhaust outlets

Trunk pass-through

## SEATING AND TRIM

---

Hand-finished dark aluminized composite interior trim  
Perforated leather-trimmed interior  
Perforated leather-trimmed steering wheel with "F" logo  
Perforated leather-trimmed and chrome shift knob  
Aluminum sport pedals  
10-way driver's and front passenger's (including lumbar) power sport-bolstered seats  
Heated front seats  
Height-adjustable headrests for all seats  
Foldable rear headrests

## COMMUNICATION, AUDIO AND NAVIGATION

---

Lexus 13-speaker, Premium Sound System with Automatic Sound Levelizer (ASL) and in-dash, single-feed, six-disc CD auto-changer  
SiriusXM Satellite Radio<sup>4,24</sup> Subscription required. 90-day trial subscription included  
USB and Auxiliary iPod<sup>®7</sup>/MP3/Windows Media<sup>®</sup> Audio (WMA) port  
In-glass antenna with FM-diversity system  
Bluetooth<sup>®</sup> technology<sup>30</sup>  
Bluetooth audio<sup>8</sup> profile for wireless integration of compatible music players with in-vehicle audio system controls

## INSTRUMENTATION AND CONTROL

---

Steering-wheel-mounted audio, phone and display controls  
Steering-wheel-mounted sport switch  
Electroluminescent instrumentation with startup sequence  
Digital speedometer  
Automatic on/off projector-beam headlamps with 30-second delay  
Illuminated interior electronic trunk-lid and fuel-filler door releases  
Lexus Personalized Settings (LPS)<sup>31</sup> to customize select electronic functions

# IS F STANDARD SAFETY AND SECURITY FEATURES

## ACTIVE SAFETY

---

Vehicle Dynamics Integrated Management (VDIM)<sup>18</sup> with Sport mode and cutoff switch  
Traction Control (TRAC)  
Four-wheel power-assisted disc brakes manufactured by Brembo<sup>®19</sup>  
Four-sensor, four-channel Anti-lock Braking System  
Brake Assist<sup>29</sup>  
Electronic Brakeforce Distribution (EBD)  
Bi-Xenon<sup>™</sup> High-Intensity Discharge (HID) headlamps with dynamic auto-leveling and LED daytime running lights  
Direct Tire Pressure Monitor System<sup>32</sup>  
Water-repellent front-door glass  
Daytime running lights  
Integrated foglamps  
LED taillamps  
Variable intermittent windshield wipers with mist cycle  
Rear-window defogger with auto-off timer  
Power-adjustable outside mirrors with defoggers and puddle lamps; integrated turn indicators  
Smart Stop Technology<sup>33</sup>

## PASSIVE SAFETY

---

Driver's and front passenger's advanced airbag system (SRS)<sup>20</sup> with front passenger's twin-chamber airbag (SRS)<sup>20</sup>  
Front seat-mounted side airbags (SRS)<sup>20</sup>  
Front and rear side curtain airbags (SRS)<sup>20</sup>  
Driver's and front passenger's knee airbags (SRS)<sup>20</sup>  
Three-point seatbelts for all seating positions, pre-tensioners with force limiters for front and outboard rear seats  
Automatic Locking Retractor/Emergency Locking Retractor (ALR/ELR) seatbelts for all passenger seating positions. Emergency Locking Retractor (ELR) only for driver's seat  
Height-adjustable front shoulder belt anchors  
Child Restraint Seat (CRS) tether anchor brackets for rear outboard seating positions  
Highly rigid body structure with front and rear crumple zones  
Side-impact door beams  
Reinforcements in pillars  
Impact-dissipating upper interior trim  
Collapsible steering column

## SECURITY

---

Safety Connect<sup>®5,22</sup> offers Automatic Collision Notification, Stolen Vehicle Location, an Emergency Assistance Button (SOS) and Enhanced Roadside Assistance<sup>23</sup> connectivity. Subscription required.  
One-year trial subscription included  
Vehicle theft-deterrent and engine immobilizer system<sup>10</sup>  
Tool kit  
First aid kit  
Emergency interior trunk release

See disclaimers on page 82.

# ACCESSORIES\*

- 1 First aid kit
- 2 Carpet cargo mat
- 3 18-in G-Spider alloy wheels (IS RWD and IS C only)<sup>13</sup>
- 4 Cargo net-envelope
- 5 Car cover
- 6 All-weather floor mats<sup>14</sup>
- 7 Wind screen (IS C only)
- 8 Paint protection film<sup>35</sup>
- 9 Wheel locks
- 10 Rear spoiler (IS only)
- 11 18-in ISP Mode alloy wheels (IS RWD and IS C only)<sup>13</sup>
- 12 Rear bumper appliqué



As shown on the 2010 IS F



\*Please see page 82 for more information regarding options/accessories/packages.

See disclaimers on page 82.  
Optional equipment shown.



# OPTION PACKAGES\*

## IS PACKAGES

### NAVIGATION SYSTEM

Navigation System<sup>4</sup> including voice command, color LCD display with integrated backup camera,<sup>21</sup> Enhanced *Bluetooth*<sup>®</sup> technology,<sup>30</sup> NavTraffic,<sup>TM4,24</sup> NavWeather<sup>TM4,24</sup> and Sports and Stocks<sup>4,24</sup> Subscription required. 90-day trial subscription included

Lexus Enform<sup>®5,6</sup> with Safety Connect<sup>®5,22</sup> offers Destination Assist, eDestination, Automatic Collision Notification, Stolen Vehicle Location, Emergency Assistance Button (SOS) and Enhanced Roadside Assistance<sup>23</sup> services. Subscription required. One-year trial subscription included

### NAVIGATION SYSTEM/MARK LEVINSON PREMIUM AUDIO SYSTEM PACKAGE

Includes all Navigation System contents plus:

Mark Levinson<sup>®</sup> 14-speaker 300-watt @ less than 0.1% THD, 20-20,000 Hz<sup>36</sup> Premium Surround Sound Audio System<sup>3</sup> with 7.1 architecture and in-dash, single-feed, six-disc DVD/CD auto-changer

### PREMIUM PACKAGE

Espresso or dark gray bird's-eye maple interior trim

Perforated leather-trimmed interior with heated and ventilated front seats

### LUXURY PACKAGE

Power tilt-and-telescopic steering column

Lexus Memory System to control power driver's seat (except lumbar), outside mirrors and steering wheel

Electrochromic (auto-dimming) outside mirrors with auto tilt-down in reverse

Illuminated door-sill scuff plates

Espresso or dark gray bird's-eye maple interior trim

Perforated semi-aniline leather-trimmed interior with heated and ventilated front seats

Power rear sunshade

Bi-Xenon<sup>TM</sup> High-Intensity Discharge (HID) headlamps with LED daytime running lights and dynamic auto-leveling (IS 250)

Rain-sensing intermittent windshield wipers with mist cycle

### LUXURY PACKAGE WITH 18-IN WHEELS (RWD ONLY)

Includes all Luxury Package contents plus:

18-in five-spoke alloy wheels with all-season tires<sup>13</sup>

### F SPORT PACKAGE (IS RWD A/T)

18-inch split-five-spoke alloy wheels with Dark Graphite finish and summer or all-season tires<sup>13</sup>

F Sport<sup>TM</sup> suspension and EPS tuning

Front lip spoiler, upper and lower grille inserts, and rear spoiler

F Sport front seats, steering wheel, shift knob, front fender badges, silver metallic interior trim, aluminum pedals and door-sill scuff plates

Heated front seats with microfiber inserts for front and rear seats

### F SPORT ACCESSORIES<sup>11,12</sup>

For information on F Sport Accessories,<sup>11,12</sup> see your Lexus dealer or visit [lexus.com/IS/fsportaccessories](http://lexus.com/IS/fsportaccessories).

## IS F PACKAGES

### NAVIGATION SYSTEM

Navigation System<sup>4</sup> including voice command, color LCD display with integrated backup camera,<sup>21</sup> Enhanced *Bluetooth* technology,<sup>30</sup> NavTraffic,<sup>4,24</sup> NavWeather<sup>4,24</sup> and Sports and Stocks<sup>4,24</sup> Subscription required. 90-day trial subscription included

Lexus Enform<sup>5,6</sup> with Safety Connect<sup>5,22</sup> offers Destination Assist, eDestination, Automatic Collision Notification, Stolen Vehicle Location, Emergency Assistance Button (SOS) and Enhanced Roadside Assistance<sup>23</sup> services. Subscription required. One-year trial subscription included

### NAVIGATION SYSTEM/MARK LEVINSON PREMIUM AUDIO SYSTEM PACKAGE

Includes all Navigation System contents plus:

Mark Levinson 14-speaker 300-watt @ less than 0.1% THD, 20-20,000 Hz<sup>36</sup> Premium Surround Sound Audio System<sup>3</sup> with 7.1 architecture and in-dash, single-feed, six-disc DVD/CD auto-changer

## IS C PACKAGES

### NAVIGATION SYSTEM

Navigation System<sup>4</sup> including voice command, color LCD display with integrated backup camera,<sup>21</sup> Enhanced *Bluetooth* technology,<sup>30</sup> NavTraffic,<sup>4,24</sup> NavWeather<sup>4,24</sup> and Sports and Stocks<sup>4,24</sup> Subscription required. 90-day trial subscription included

Lexus Enform<sup>5,6</sup> with Safety Connect<sup>5,22</sup> offers Destination Assist, eDestination, Automatic Collision Notification, Stolen Vehicle Location, Emergency Assistance Button (SOS) and Enhanced Roadside Assistance<sup>23</sup> services. Subscription required. One-year trial subscription included

### NAVIGATION SYSTEM/MARK LEVINSON PREMIUM AUDIO SYSTEM PACKAGE

Includes all Navigation System contents plus:

Mark Levinson 12-speaker 270-watt @ less than 0.1% THD, 20-20,000 Hz<sup>36</sup> Premium Surround Sound Audio System<sup>3</sup> with 5.1 architecture and in-dash, single-feed, six-disc DVD/CD auto-changer

### LUXURY PACKAGE

Heated and ventilated front seats with perforated semi-aniline leather trim

Lexus Memory System to control power driver's and front passenger's seats (except lumbar), outside mirrors and steering wheel

Rain-sensing intermittent windshield wipers with mist cycle

Electrochromic (auto-dimming) outside mirrors with auto tilt-down in reverse

Espresso or dark gray bird's-eye maple interior trim

Bi-Xenon High-Intensity Discharge (HID) headlamps with LED daytime running lights and dynamic auto-leveling

Illuminated door-sill scuff plates

One-touch power slide/fold/return front seats

### F SPORT ACCESSORIES<sup>11,12</sup>

For information on F Sport Accessories,<sup>11,12</sup> see your Lexus dealer or visit [lexus.com/IS/fsportaccessories](http://lexus.com/IS/fsportaccessories).

## OPTIONS\*

### IS, IS C AND IS F

Intuitive Parking Assist

Headlamp washers (IS 250 AWD, IS 350, IS 350 C, IS 250 C, IS F)

### IS

Bi-Xenon High-Intensity Discharge (HID) headlamps and LED daytime running lights with dynamic auto-leveling (IS 250)

Rear spoiler

18-in five-spoke alloy wheels with Liquid Graphite finish and all-season or summer tires<sup>13</sup>

### IS C

Bi-Xenon High-Intensity Discharge (HID) headlamps and LED daytime running lights with dynamic auto-leveling

Heated and ventilated front seats with perforated leather trim and dark gray bird's-eye maple interior trim

18-in five-spoke alloy wheels with all-season tires<sup>13</sup>

Pre-Collision System (PCS)<sup>37</sup> and Dynamic Radar Cruise Control<sup>26</sup>

Wind screen

### IS F

Pre-Collision System (PCS)<sup>37</sup> and Dynamic Radar Cruise Control<sup>26</sup>

# WARRANTY

Four-year/50,000-mile Lexus Limited Warranty. Six-year/70,000-mile Powertrain Warranty. Six-year/unlimited-mileage Corrosion Perforation Warranty. All warranties with zero deductible. See the IS, ISC or ISF *Warranty and Services Guides* at your Lexus dealer for details.

**1.** Ratings achieved using the required premium unleaded gasoline with an octane rating of 91 or higher. If premium fuel is not used, performance will decrease. **2.** Performance figures are for comparison only and were obtained with prototype vehicles by professional drivers using special safety equipment and procedures. Do not attempt. **3.** Mark Levinson® is a registered trademark of Harman International Industries, Inc. **4.** Availability and accuracy of the information provided by the Navigation System or any SiriusXM services mentioned (if installed) are dependent upon many factors. Use common sense when relying on information provided. Services not available in every city or roadway. Periodic Navigation updates available at additional cost. Please see your *Navigation System Owner's Manual* or contact SiriusXM for details. **5.** Lexus Enform® and Safety Connect® are available. Contact with the Lexus Enform and/or Safety Connect response center is dependent upon the telematics device being in operative condition, cellular connection availability, navigation map data and GPS satellite signal reception, which can limit the ability to reach the response center or receive emergency support. Enrollment and Telematics Subscription Service Agreement required. One-year trial subscription available only with new vehicle purchase of Lexus Enform- and Safety Connect-equipped vehicles. Additional subscription terms available; charges vary by subscription term selected. **6.** Lexus Enform premium services Destination Assist and eDestination will function in the contiguous United States. These services may also function in Hawaii and limited areas of Alaska for vehicles that contain map data for those states. They will not function in Canada or in other countries outside the United States. **7.** iPod® is a registered trademark of Apple Inc. All rights reserved. **8.** Bluetooth® audio device must be enabled with A2DP and AVRCP. **9.** The SmartAccess system may interfere with some pacemakers or cardiac defibrillators. If you have one of these medical devices, please talk to your doctor to see if you should deactivate this system. **10.** The engine immobilizer is a state-of-the-art anti-theft system. When you insert your key into the ignition switch or bring a SmartAccess fob into the vehicle, the key transmits an electronic code to the vehicle. The engine will only start if the code in the transponder chip inside the key or SmartAccess fob matches the code in the vehicle's immobilizer. Because the transponder chip is embedded in the key or SmartAccess fob, it can be costly to replace. If you lose a key or SmartAccess fob, your Lexus dealer can help. Alternatively, you can find a qualified independent locksmith to perform high-security key services by consulting your local *Yellow Pages* or by contacting [www.aloa.org](http://www.aloa.org). **11.** F Sport™ Accessories are warranted for 12 months from the date of installation or for the balance of the new-car or Certified Pre-Owned (CPO) warranty in force at the date of installation, whichever is greater, when installed by an authorized Lexus dealer. F Sport Accessories installed by anyone other than an authorized Lexus dealer are warranted for 12 months from the date of purchase only, and the warranty coverage is limited to the replacement value of the F Sport Accessories. These warranties do not cover maintenance services such as replacement of brake pads/linings and clutch linings; or noise, vibration, cosmetic conditions and other deterioration caused by normal wear and tear. Part failure caused by improper installation by anyone other than an authorized Lexus dealer may void the F Sport Accessories warranty, the new-vehicle warranty or both. **12.** F Sport™ is a trademark of Toyota Motor Corporation. All information presented herein is based on data available at time of printing and is subject to change without notice. F Sport Accessories are available exclusively through participating Lexus dealers. See dealers for more detailed information. **13.** 18-in performance tires are expected to experience greater tire wear than conventional tires. Tire life may substantially be less than 15,000 miles, depending upon driving conditions. **14.** To avoid interference with pedal operation, do not install a floor mat on top of an existing floor mat, and each mat must be secured with retention hooks (clips). **This floor mat was designed specifically for use in this model and model year vehicle and SHOULD NOT be installed in any other vehicle.** **15.** With either the front- or rear-brake upgrade, the compact spare tire cannot be used. In the event of a flat, the tire must be repaired or replaced. Brake upgrades will fit 18-in factory option wheels, 18-in Genuine Lexus Accessory wheels or 18-in or 19-in F Sport™ wheels only. **16.** 19-in performance tires are expected to experience greater tire wear than conventional tires. Tire life may be substantially less than 15,000 miles, depending upon driving conditions. **17.** The air intake system has an aftermarket emission certificate only and cannot be sold or financed with a new vehicle. **18.** Vehicle Stability Control (VSC) and Vehicle Dynamics Integrated Management (VDIM) are electronic systems designed to help the driver maintain control under adverse conditions. They are not substitutes for safe driving practices. Factors including speed, road conditions and driver steering input can all affect whether VSC and VDIM will be effective in preventing a loss of control. Please see your *Owner's Manual* for further details. **19.** High-friction brakes require periodic inspection and measurement as outlined in the *Warranty and Services Guide*. The pads and rotors are expected to experience greater wear than conventional brakes. Pad life may be less than 20,000 miles, and brake rotor life may be less than 50,000 miles depending on driving conditions. **20.** All the airbag (AB) systems are Supplemental Restraint Systems. All ABs (if installed) are designed to inflate only under certain conditions and in certain types of severe collisions: frontal and knee ABs typically inflate in frontal collisions; side and side curtain ABs in side collisions; Roll-Sensing Curtain AB at a severe tilt degree, roll or lateral G-force. In all other accidents, the ABs will not inflate. To decrease the risk of injury from an inflating AB, always wear seatbelts, sit upright in the middle of the seat as far back as possible and do not lean against the door. Do not put objects in front of an AB or around the seatback. Do not use a rearward-facing child seat in any front passenger seat. The force of an inflating AB may cause serious injury or death. Please see your *Owner's Manual* for further information/warnings. **21.** The backup camera does not provide a comprehensive view of the rear area of the vehicle. You should also look around outside your vehicle and use your mirrors to confirm rearward clearance. Cold weather will limit effectiveness and view may become cloudy. **22.** Safety Connect services will function in the United States, including Hawaii and Alaska, and in Canada. The services will not function outside of the United States in countries other than Canada. **23.** Coverage only available in the continental U.S. and Canada. Please see your Lexus dealer for details. **24.** SiriusXM services require a subscription after trial period. Subscriptions governed by SiriusXM Customer Agreement available at [siriusxm.com](http://siriusxm.com). **If you decide to continue your SiriusXM service at the end of your complimentary trial, the plan you choose will automatically renew and bill at then-current rates unless you call 1-800-967-2346 to cancel.** Fees and programming subject to change. Available only to those at least 18 years of age in the 48 contiguous United States and D.C. **25.** HAC is designed to help minimize backward rolling on steep ascents. It is not a substitute for safe driving judgment and practices. Factors including grade, surface conditions and driver input can all affect whether HAC will be effective in preventing a loss of control. Please see your *Owner's Manual* for further details. **26.** Dynamic Radar Cruise Control is designed to assist the driver and is not a substitute for safe and attentive driving practices. Please see your *Owner's Manual* for important instructions and cautions. **27.** 17-in performance tires are expected to experience greater tire wear than conventional tires. Tire life may be substantially less than 20,000 miles, depending upon driving conditions. **28.** EPA-estimated ratings. Actual mileage will vary. **29.** Brake Assist is designed to help the driver take full advantage of the benefits of ABS. It is not a substitute for safe driving practices. Braking effectiveness also depends on proper brake-system maintenance and tire and road conditions. **30.** Bluetooth technology phones listed on [lexus.com](http://lexus.com) have been tested for compatibility with Lexus vehicles. Performance will vary based on phone software version, coverage and your wireless carrier. Phones are warranted by their manufacturer, not Lexus. The Bluetooth wordmark and logos are registered trademarks owned by Bluetooth SIG, Inc. and any use of such marks by Lexus is under license. Other trademarks and trade names are those of their respective owners. **31.** For vehicles without available Navigation System, the Lexus Personalized Settings (LPS) Program is a one-time, complimentary offer for new vehicles for the first 12 months from the date the vehicle is sold. Vehicles with Navigation System allow the driver to change settings. Please see your Lexus dealer for more information. **32.** The Tire Pressure Monitor System alerts the driver when tire pressure is critically low. For optimal tire wear and performance, tire pressure should be checked regularly with a gauge; do not rely solely on the monitor system. Please see your *Owner's Manual* for details. **33.** Smart Stop Technology operates only in the event of certain simultaneous brake and gas pedal applications. When engaged, the system will reduce engine power to help the brakes bring the vehicle to a stop. Factors including speed, road conditions and driver input can all impact stopping distance. Smart Stop Technology is not a substitute for safe and attentive driving and does not guarantee instant stopping. Please see your *Owner's Manual* for further details. **34.** TORSEN® is a registered trademark of Zexel Torsen, Inc. **35.** Currently only available pre-installed on select vehicles. Ask your Dealer Sales Consultant for vehicle application. **36.** Continuous average power, all channels driven, at less than 0.1% THD; 20-20,000 Hz. **37.** The Pre-Collision System is designed to help reduce the crash speed and damage in certain frontal collisions only. It is not a collision-avoidance system and is not a substitute for safe and attentive driving. System effectiveness depends on many factors, such as speed, driver input and road conditions. Please see your *Owner's Manual* for further information.

\*Lexus strives to build vehicles to match customer interest, and thus they typically are built with popular options and option packages. Not all options/packages are available separately, and some may not be available in all regions of the country. See [lexus.com](http://lexus.com) for information about options/packages commonly available in your area. If you would prefer a vehicle without any or with different options, contact your dealer to check for current availability or the possibility of placing a special order. Specifications, features, equipment, technical data, performance figures, options, and color and trim are based upon information available at time of printing, are subject to change without notice, are for mainland U.S.A. vehicles only. Some vehicles shown with available equipment. See your Lexus dealer for details. Lexus reminds you to wear seatbelts, secure children in rear seat, obey all traffic laws and drive responsibly. For more information, call 800-USA-LEXUS (872-5398) or visit [lexus.com](http://lexus.com). To learn more about your financing options, contact your Lexus dealer or call Lexus Financial Services at 800-874-7050. ©2011 Lexus