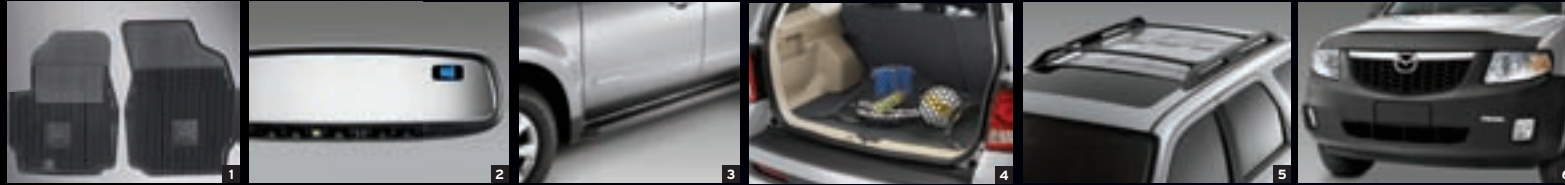


ONCE YOU HAVE IT, OUTFIT IT ACCORDINGLY.

One of the best things about owning a Tribute is personalizing it with Genuine Mazda Accessories, which carry the same new-vehicle warranty as your new Tribute when installed before or at initial retail delivery. Ask your Mazda Dealer for details.



1. All-Weather Floor Mats. Not just for bad weather anymore, these "Whatever" floor mats are the perfect accessory to protect your Tribute's interior from not only water, sand, mud and snow but crumbs, spills, grass and anything else that your Zoom-Zoom lifestyle may bring. **2. Auto-Dimming Rearview Mirror.** Tribute's available auto-dimming rearview mirror with compass and HomeLink® automatically dims to reduce headlight glare from vehicles behind you. It also features a bright LED compass readout and the convenience of HomeLink, which lets you do things like open garage doors, turn on lights and open gates—all from the driver's seat. **3. Side Steps.** Side steps make getting in and out easier. And more stylish. **4. Cargo Net.** Keep smaller items from bouncing around in your cargo area. Easily installed and removed.* **5. Roof Rack.** Expand your storage possibilities with a functional roof rack. Add any of our customized attachments to transport your kayak, bike, cargo, surfboard, luggage, snowboard and more. **6. Front Mask.** Bugs, nicks and scratches are out there waiting. Protect your Tribute with a custom-tailored front mask.

- | | |
|------------------------------------|---|
| Hood Bug Deflector | 3.5-mm Audio Cable |
| Windshield Sunscreen | Portable Bluetooth® Car Kit |
| Roof Cargo Box | Portable Navigation Device |
| Roof Luggage Basket | Auto-Dimming Rearview Mirror with Compass |
| License-Plate Frame | Ashtray |
| Class II Trailer Hitch | Carpet Floor Mats |
| Trailer Hitch-Mounted Bike Carrier | Cargo Cover |
| Rear Spoiler | Cargo Mat† |
| Car Cover | First Aid Kit |
| Car-Cover Cable Lock | Roadside Assistance Kit |
| Touch-Up Paint | Remote Engine Start (AT only) |
| Wheel Locks | |

* Not intended for use with cargo mat.

† Not intended for use with cargo net.

Bluetooth is a registered trademark of Bluetooth SIG, Inc.

Please remember to properly secure all cargo.



ZOOM-ZOOM



2011 Mazda TRIBUTE
ZOOM-ZOOM



GET BACK TO BASICS. IN AN SUV THAT'S ANYTHING BUT.

With its confident, broad-shouldered stance, versatile design and proven reliability, it's easy to see why the Mazda Tribute remains a favorite of the traditional SUV crowd. Powered by a spirited 171-hp 2.5L MZR 4-cylinder or a powerful 240-hp, 3.0L DOHC V6 and equipped with precise, variable-assist rack-and-pinion steering, 4-wheel independent suspension and dual stabilizer bars, Tribute tackles daily commutes, weekend projects and spontaneous adventures with equal skill. For even greater road capability, the Tribute's Grand Touring offers up to 3450 lb of towing capability and a frame-mounted Class II trailer receiver hitch. And on most models, an Active Torque Control Coupling 4-wheel-drive (4WD) system* is available. All because we think you shouldn't have to choose between value and versatility. Or performance and practicality. Not when the 2011 Mazda Tribute has it all. Zoom-Zoom.



The roster of safety features standard on every 2011 Mazda Tribute includes:

- Advanced dual front air bags†
- Front side-impact air bags†
- Side-impact air curtains with rollover protection‡
- Auto door lock/unlock
- LATCH rear-seat child-safety-seat anchors
- Roll Stability Control (RSC)
- Dynamic Stability Control (DSC)‡
- Traction Control System (TCS)
- Anti-lock Brake System (ABS)
- Electronic Brakeforce Distribution (EBD)
- Daytime Running Lights
- Tire-Pressure Monitoring System (TPMS)



* 4WD available on most Tribute models. † Always wear your seat belt and secure children in the rear seats in appropriate child restraints. ‡ Dynamic Stability Control (DSC) is an electronic system designed to help the driver maintain control under adverse conditions. It is not a substitute for safe driving practices. Factors including speed, road conditions and driver steering input can all affect whether DSC will be effective in preventing loss of control. Please see your owner's manual for further details.

THERE'S A REASON IT'S CALLED GRAND TOURING.

The Tribute Grand Touring's broad-shouldered stance might look all business, but inside it's a driver's pleasure. Cockpit displays and controls are strategically placed for optimal convenience and operating ease. The leather-trimmed 6-way power-adjustable driver's seat and leather-wrapped tilt steering wheel make finding your ideal driving position effortless. And the Grand Touring's comprehensive list of standard creature comforts includes handy steering-wheel-mounted stereo and cruise control switches. Heated and leather-trimmed front seats. A one-touch power sliding-glass moonroof. Air conditioning. Power windows and door locks. Dual power-operated and heated outside mirrors. A 190-watt 7-speaker AM/FM/CD audio system with in-dash 6-disc CD changer and auxiliary-audio input jack. A versatile 60/40 split folding rear seatback that helps provide ample room for five. Plus a free six-month subscription to SIRIUS Satellite Radio®. So why wait? Test-drive a Grand Touring soon. You won't want to settle for anything less.



1. Fold down the Tribute's **60/40 Split Fold-Down Rear Seatback** and presto! You've got 67 cu ft of cargo space available for whatever you please. Touring and Grand Touring models include a retractable cargo cover that keeps valuables out of sight.*
2. Tribute Grand Touring models feature a **One-Touch Power Sliding-Glass Moonroof** with interior sunshade, along with a handy storage console, dual map lights and garage door opener. 3. Tribute's **Multifunction Center Console/Armrest** provides a covered storage compartment big enough to accommodate a laptop, plus removable storage bins and two pairs of cup holders for front and rear passengers. 4. It might look like a normal rearview mirror, but shift into reverse, and the Grand Touring's **Rearview Camera with Auto-Dimming Mirror Display** provides a clear picture of what's behind you.

* Remember to properly secure all cargo.



TRIBUTE SPECIFICATIONS & CAPACITIES

SPECIFICATIONS	Tribute <i>i</i>	Tribute <i>s</i>
Engine size and type	2.5L DOHC 16-valve 4-cylinder w/ variable valve timing	3.0L DOHC 24-valve V6 w/ variable valve timing
Horsepower, SAE net	171 @ 6000 rpm	240 @ 6550 rpm
Torque, SAE net (lb-ft)	171 @ 4500 rpm	223 @ 4300 rpm
Compression ratio	9.7:1	10.3:1
Fuel system	Multiport electronic fuel injection	
Fuel requirement	Regular unleaded gasoline	
Fuel economy (EPA estimated mpg, city/hwy)	FWD (manual): 23/28 FWD (auto): 21/28 AWD (auto): 20/26	FWD (auto): 19/25 AWD (auto): 18/23
Body type	Unibody with "Triple H" construction	
Steering type	Power rack-and-pinion with variable assist	
Turning circle, curb-to-curb (ft)	36.7	
Base curb weight (lb)	FWD (manual): 3272 FWD (auto): 3337 AWD (auto): 3483	FWD (auto): 3396 AWD (auto): 3555

EXTERIOR DIMENSIONS

Wheelbase/overall length (in)	103.1/174.9	
Overall width (in)	81.3 (including mirrors)	
Overall height (in)	67.9; 70.2 (with roof rack)	
Track, front/rear (in)	60.7/60.2	
Ground clearance (in)	8.4 (FWD) 8.1 (AWD)	

INTERIOR DIMENSIONS	Front	Rear
Headroom (in)	40.4	39.2
with moonroof (in)	39.2	37.5
Legroom (in)	41.6	35.6
Shoulder room (in)	56.6	55.9
Hip room (in)	53.3	49.1

CAPACITIES

Passenger volume (cu ft) with moonroof (cu ft)	99.4 96.0
Cargo volume, rear seatback up (cu ft) rear seatback folded (cu ft)	31.4 67.2; 67.1 (with moonroof)
Fuel capacity (U.S. gallons)	17.5
Towing capacity (lb)	1500 (Tribute <i>i</i>) 3450 (Tribute <i>s</i>)

TRIBUTE ENGINE & MECHANICAL

ENGINE & TRANSMISSION	Sport	Touring	Grand Touring
2.5L DOHC 16-valve 4-cylinder with variable valve timing	Tribute <i>i</i>	Tribute <i>i</i>	Tribute <i>s</i>
3.0L DOHC 24-valve V6 with variable valve timing	-	-	Tribute <i>s</i>
5-speed manual overdrive transmission	S	-	-
6-speed automatic overdrive transmission	(Available)	S	S
Front-wheel drive	S	S	S
Active Torque Control Coupling (ATCC)	0 (AT only)	0	0
4-wheel-drive system	-	-	-

SUSPENSION & BRAKES

Power variable-assist rack-and-pinion steering	S	S	S
Independent MacPherson strut front suspension	S	S	S
Independent multilink rear suspension	S	S	S
Front and rear stabilizer bars	S	S	S
Power-assisted front ventilated disc/rear drum brakes	S	S	S
Anti-lock Brake System (ABS) with Electronic Brakeforce Distribution (EBD)	S	S	S
Dynamic Stability Control (DSC)*	S	S	S
Traction Control System (TCS)	S	S	S
Roll Stability Control (RSC)	S	S	S

TRIBUTE OPTIONS & OPTION PACKAGES

OPTIONS/OPTION PACKAGES	Sport	Touring	Grand Touring
Towing Package (Tribute <i>s</i> only): Frame-mounted Class II trailer receiver hitch with 3450-lb capacity; trailer-wiring harness	-	-	S
Cargo mat (carpet type) ¹	0/A	0/A	0/A
Cargo net ²	0/A	0/A	0/A
All-weather floor mats	0/A	0/A	0/A
Auto-dimming rearview mirror with compass	0/A	0/A	-
Auto-dimming rearview mirror with compass and HomeLink ³	0/A	0/A	-
Remote engine start (AT only)	0/A	0/A	0/A
Retractable cargo cover	0/A	S	S
Side steps	0/A	0/A	0/A
Roof rack with cross bars	0/A	S	S
Trailer hitch, Class II, 1500-lb capacity (<i>i</i> models)	0/A	0/A	0/A
Wheel locks	0/A	0/A	0/A

TRIBUTE EXTERIOR

BODY	Sport	Touring	Grand Touring
Privacy-tint rear glass	-	S	S
Power sliding-glass moonroof with one-touch open/close	-	-	S
Dual power remote outside mirrors	S	S	-
Dual heated power remote outside mirrors	-	-	S
Body-color door handles	S	S	S
Molded-color (Shadow Gray) front & rear bumper trim	S	S	S
Easy Fuel™ capless fuel filler	S	S	S
Roof rack with cross bars	0/A	S	S
Clear-lens halogen headlights (automatic)	S	S	S
Clear-lens halogen fog lights	S	S	S
2-speed variable-intermittent front windshield wipers	S	S	S
2-speed fixed-intermittent rear wiper/washer	S	S	S

TIRES & WHEELS

16-inch aluminum alloy wheels; P235/70R16 tires	S	S	S
---	---	---	---

TRIBUTE INTERIOR

COMFORT & CONVENIENCE	Sport	Touring	Grand Touring
Power windows with driver's one-touch-down feature	S	S	S
Power door locks with 2-stage unlocking	S	S	S
Remote keyless illuminated entry system	S	S	S
Tilt steering wheel (leather-wrapped on Grand Touring)	S	S	S
Cruise control with steering-wheel-mounted controls	S (AT only)	S	S
Air conditioning; rear window defogger	S	S	S
Outside ambient temperature display	S	S	S
Floor console with dual cup holders and covered storage compartment; dual rear-seat cup holders	S	S	S
Front-door storage pockets	S	S	S
Overhead console with dual storage bins	-	S	-
Overhead console with storage bin	-	-	S
Heater/defroster with rear heater ducts	S	S	S
Retractable cargo cover	0/A	S	S
Front and rear 12V power point	S	S	S
10-minute key-off power reserve for windows and moonroof	S	S	S

TRIBUTE INTERIOR continued

COMFORT & CONVENIENCE	Sport	Touring	Grand Touring
Back-up camera auto-dimming-mirror display	-	-	S
Black gauges with white lettering & silver-color bezels	S	S	S
Dual vanity mirrors with covers	S	S	S
Dual illuminated vanity mirrors with covers	-	-	S
Front map lights and cargo-area light	S	S	S
Driver's left footrest	S	S	S

AUDIO

100-watt AM/FM/CD stereo with 4 speakers	S	-	-
190-watt AM/FM in-dash 6-disc CD changer with 7 speakers with automatic level control	-	S	S
Auxiliary-audio input jack	S	S	S
Steering-wheel-mounted audio controls	-	S	S
SIRIUS Satellite Radio ⁵ -ready head unit	S	S	S
SIRIUS Satellite Radio ⁵ with 6-month subscription	-	-	S

SEATING & TRIM

Reclining front bucket seats	S	S	S
60/40 split reinforced fold-down rear seatback	S	S	S
Cloth-trimmed seats	S	S	-
Leather-trimmed seats	-	-	S
Adjustable headrests for all seating positions	S	S	S
6-way power-adjustable driver's seat with adjustable lumbar support and seat height	-	S	S
Heated front seats	-	-	S
Front seatback map pockets	-	S	S
Carpet floor mats	S	S	S

TRIBUTE SAFETY & SECURITY

SAFETY & SECURITY	Sport	Touring	Grand Touring
Roll Stability Control (RSC)	S	S	S
Side-impact air curtains ⁴ (coverage for front and rear) with rollover protection	S	S	S
Advanced dual front air bags ⁴	S	S	S
Front side-impact air bags ⁴	S	S	S
Dynamic Stability Control (DSC)*	S	S	S
Traction Control System (TCS)	S	S	S
Daytime running lights	S	S	S
Side-impact door beams	S	S	S
3-point seat belts for all seating positions	S	S	S
LATCH rear-seat child-safety-seat anchors	S	S	S
Passenger window lockout feature (driver-controlled)	S	S	S
Auto door lock/unlock	S	S	S
Tire-Pressure Monitoring System (TPMS)	S	S	S
Engine-immobilizer antitheft system	S	S	S

S: Standard O: Optional A: Dealer-installed accessory -: Not available

* Dynamic Stability Control (DSC) is an electronic system designed to help the driver maintain control under adverse conditions. It is not a substitute for safe driving practices. Factors including speed, road conditions and driver steering input can all affect whether DSC will be effective in preventing loss of control. Please see your owner's manual for further details. † Not intended for use with cargo net. ‡ Not intended for use with cargo mat. § SIRIUS Satellite Radio reception requires a subscription and Mazda satellite radio receiver accessory kit. Available only in the U.S., except Alaska and Hawaii. ¶ Always wear your seat belt and secure children in the rear seats in appropriate child restraints.

© 2010 Mazda Motor of America, Inc. • 7755 Irvine Center Drive, Irvine, CA 92618 • 800-639-1000 MazdaUSA.com • Printed in U.S.A. 8/10 (40M) • Part No. 9999-92-TRI-11

TRIBUTE COLOR COMBINATIONS



TUXEDO BLACK

TRIM LEVEL	INTERIOR	FABRICS
Tribute Sport, Touring	Charcoal	Cloth
Tribute Grand Touring	Charcoal	Leather



WHITE SUEDE

TRIM LEVEL	INTERIOR	FABRICS
Tribute Sport, Touring	Graystone	Cloth
Tribute Grand Touring	Graystone	Leather



STEEL BLUE

TRIM LEVEL	INTERIOR	FABRICS
Tribute Sport, Touring	Charcoal	Cloth
Tribute Grand Touring	Charcoal	Leather



INGOT SILVER

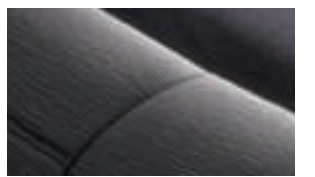
TRIM LEVEL	INTERIOR	FABRICS
Tribute Sport, Touring	Charcoal	Cloth
Tribute Grand Touring	Charcoal	Leather



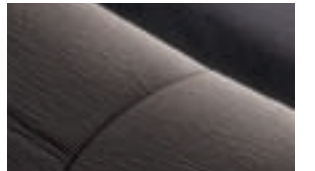
SANGRIA RED

TRIM LEVEL	INTERIOR	FABRICS
Tribute Sport, Touring	Graystone	Cloth
Tribute Grand Touring	Graystone	Leather

TRIBUTE UPHOLSTERY



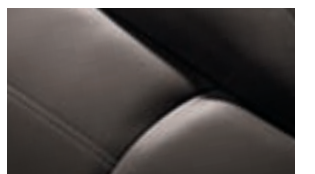
CHARCOAL CLOTH
Tribute Sport, Touring



GRAYSTONE CLOTH
Tribute Sport, Touring



CHARCOAL LEATHER
Tribute Grand Touring



GRAYSTONE LEATHER
Tribute Grand Touring

PRODUCT CHANGES AND OPTIONS AVAILABILITY:
Following publication of this brochure, certain changes in standard equipment, options, prices and the like, or product delays may have occurred which would not be included in these pages. Your Mazda Dealer is your best source for up-to-date information. Mazda reserves the right to change product specifications at any time without incurring obligations. Options shown or described in this brochure are available at extra cost and may be offered only in combination with other options or subject to additional ordering requirements or limitations.

Peace of mind also comes standard with your 2011 Mazda Tribute. Every new Mazda is protected by:

- A 3-year/36,000-mile* "bumper-to-bumper" limited warranty
- A 3-year/36,000-mile* 24/7 Emergency Roadside Assistance Program
- A 5-year/60,000-mile* limited powertrain warranty
- A 5-year/unlimited-mileage warranty against body rust-through

* Whichever comes first.

For details, please see your Mazda Dealer, visit MazdaUSA.com, or call toll-free 1-800-639-1000.

FINANCING YOUR NEW MAZDA IS EASY.

Whether buying or leasing a new Mazda, Certified Pre-Owned Mazda or a used vehicle, Mazda Capital Services can help make the financing process more convenient and satisfying. One of the largest auto lenders in America, Mazda Capital Services is known for first-class customer service, a wide range of financing options and highly competitive rates. To find out which purchase or lease plan is right for you, talk with your Mazda Dealer, or visit www.MazdaUSA.com.