

CLK-Class

CLK 350 CLK 500 CLK 55 AMG

Mercedes-Benz 2006



Mercedes-Benz

WE START WITH A

Look beneath the surface of a CLK-Class and discover why a Mercedes-Benz really is unlike any other automobile.

SOUL.

WHO SAYS YOUR SOULMATE HAS TO BE A PERSON?

MAGNETIC P02

CLK 350 Coupe and Cabriolet

PASSIONATE P04

CLK 500 Coupe and Cabriolet

INTIMATE P06

CLK 350 interior

SEDUCTIVE P08

CLK 500 interior

ELECTRIFYING P10

CLK 55 AMG Cabriolet

CENTERED P12

CLK 55 AMG interior

BALANCED P14

Drivetrains

INSPIRED P16

designo editions

INDIVIDUALISTIC P18

Options

CARING P28

Service and support



It's an age-old question: Is there a perfect match out there, just for you? One that understands your moods and responds to your needs. An ideal playmate—always exciting, yet never demanding. In your quest for that elusive soulmate, look no further than the 2006 CLK-Class. There's the instant attraction of its stunning lines—now more breathtaking than ever—in your choice of well-toned pillarless coupes or free-spirited cabriolets. Equally inviting is the embrace of four individually contoured seats in hand-fitted leather, surrounded by rich wood trim. You'll find enduring passion in the spirited performance of a 268-hp V-6 or the rumble of a powerful V-8—both featuring the industry's first 7-speed automatic transmission. For the most demanding, there's the ultimate thrill of a 362-hp AMG V-8. And when you go beyond the looks and heart, the CLK provides the most important feature of all—a soul of innovation that could only come from the manufacturer of the very first automobile, Mercedes-Benz. Your search is over. But the adventure is just beginning.

CLK 500 Coupe shown at left in optional Obsidian Black metallic with optional sport suspension. CLK 350 Cabriolet shown in optional Pewter metallic with optional sport suspension and Premium Package.



A MAGNETIC PERSONALITY WITH EVEN MORE PULL.

Your heart beats faster. Your breath quickens. There's no denying the attraction, but who could blame you? The 2006 CLK 350 Coupe and Cabriolet take alluring design to a higher level with aggressive new looks and an equally impressive increase in power, thanks to a 268-hp 3.5-liter DOHC V-6. The pillarless elegance of the CLK 350 Coupe is a testament to passionate engineering, creating a strong roof structure while allowing expansive panoramic views. The CLK 350 Cabriolet can give you and three of your closest friends the sun, the stars and gentle breezes at the touch of a button. And while you take a long, lingering look at both the Coupe and Cabriolet, you have to wonder: Is it possible to be in love with only one?



Fresh new design

For 2006, every CLK 350 enjoys an aggressive look that includes a new front apron with a larger intake—all the better to feed air to that powerful new-generation V-6—and a crisp new 3-slat grille.

a. Standard 17" alloy wheels

Staggered-width 5-split-spoke 17" alloy wheels are fitted with 225/45 ZR17 high-performance tires up front to help sharpen steering response, and wider 245/40 ZR17 tires¹ at the rear to contribute an extra measure of grip when it's time to put down the power.

b. Fully automatic power top

Press a button on the Cabriolet's center console or its SmartKey remote, and in 17 seconds you're open for anything. With no manual latches to operate, changing your outlook is truly a one-touch affair. A sculpted cover completes the top-down look. With its insulated, triple-layer soft top and heated glass rear window, this is a true year-round convertible.

¹ Z-rated tires are optimized for performance driving and may provide reduced ride comfort, increased tire noise, substantially increased treadwear and greater susceptibility to damage compared with H-rated tires.

ALWAYS
PASSIONATE,
 NEVER PLATONIC.

Many new-car owners enjoy a period where everything is exciting and new. And yet far too soon the honeymoon is over. Not so with the CLK 500. Whether you choose the CLK 500 Coupe or Cabriolet, the aggressive look of AMG-design lower bodywork embracing staggered-width 17" AMG thin-spoke monoblock alloy wheels will keep your heart racing. The feel of a 302-hp V-8 rocketing you to 60 mph in 5.7 seconds¹ through the quick shifts of the industry's first 7-speed automatic never loses its thrill. Steering wheel-mounted fingertip shift buttons add to the fun. With a chassis that eagerly responds to your wishes and 4-wheel disc brakes that feature 4-piston front calipers and tremendous speed-devouring abilities, even the most familiar roads suddenly become more inviting. And along with its heart-pounding performance, the CLK 500 also remains remarkably refined and poised in any driving situation, making it the perfect long-term partner for those who love to drive.



a.



b.



c.



a. AMG-design front apron
 Technically, the large front air dam with mesh intakes enhances aerodynamics and gives the powerful 5.0-liter V-8 and front brakes the air they crave.

b. AMG-design rear spoiler
 As the aerodynamic lines of the CLK 500 slice through the atmosphere, the color-keyed rear lip spoiler helps to reduce rear-end lift for improved handling at highway speeds.

c. Dual polished AMG exhaust tips
 Hinting at the spirited power beneath the hood, eye-catching dual polished stainless-steel AMG exhaust tips bring the perfect finishing touch to the CLK 500's design.

¹ CLK 500 Coupe. 6.0 seconds for CLK 500 Cabriolet. Stated rates of acceleration are based upon manufacturer's track results and may vary depending upon model, environmental and road surface conditions, driving style, elevation and vehicle load.



ENJOY INTIMACY WITHOUT GIVING UP YOUR PERSONAL SPACE.

A little private time can be nice, especially when you're surrounded by the numerous luxuries of the CLK350. From the supple leather of supportive 10-way power front seats to the reassuring touch of the leather-wrapped steering wheel and shift knob, it's an environment to savor. Enjoy the visual warmth of hand-polished Burl Walnut trim on the doors, dash and console. Become immersed in the depth of the optional harman/kardon® digital surround sound system,¹ with 12 speakers in the Coupe and 10 in the Cabriolet, made all the better by optional SIRIUS Satellite Radio. The attention to design, luxury and style place the CLK 350 models among the most personal of coupes and convertibles – with ample interior room to make sure they're never too personal.



a.
Automatic seat-belt presenters
Allow us. Each front seat belt features an automatic presenter that glides gracefully into action when you close the front door, and then retracts once you've buckled up.



b.
Multifunction display
A tap of the steering wheel-mounted controls lets you view displays of information including trip computer data and outside temperature, as well as control and program your vehicle and audio settings.



c.
10-way power front seats
Iconic seat-shaped controls help you easily find your ideal driving position. The 3-position memory even includes your settings for the power steering column and side mirrors.



d.
Rubber-studded stainless-steel pedals
The accelerator, brake and parking brake pedals all feature the cool ambience of metal trim dotted with rubber studs for a look that's gripping in more ways than one.

¹ Surround sound provided for FM radio, CD playback and optional SIRIUS Satellite Radio.





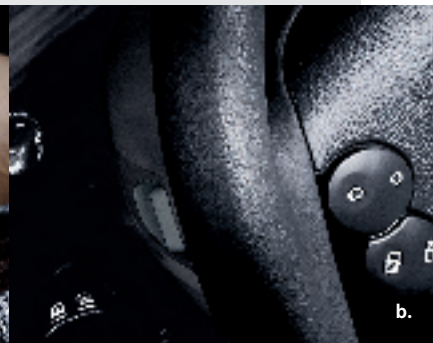
CLK500 Cabriolet shown in Black/Stone leather and Black Ash wood with optional heated front seats and COMAND system.

BE A
HEARTHROB
AND STILL BE
TAKEN SERIOUSLY.

To be an object of desire while still commanding respect requires a rare blend of seductive traits and superior intelligence. Inside the CLK 500, you'll find clever, thoughtful touches like front seats that move up and forward for easy access to the rear seats. The hand-fitted leather upholstery is worth coveting—and it's complemented by hand-polished Black Ash wood trim and ivory-color instruments in a matte-chrome surround, or optional Burl Walnut wood with chrome-ringed black gauges. The optional digital surround sound system¹ will stir your soul, as will the incredibly responsive 7-speed automatic transmission with steering wheel-mounted Touch Shift controls. Advanced digital climate control can help keep you cool while you challenge your favorite road—or it can help keep the cabin warmer for up to 30 minutes after you turn off the car. Whether you view it with cool calculation or in the heat of the moment, the CLK 500 is a seriously irresistible proposition.



a.



b.



c.

a. 7-speed automatic transmission
The first 7-speed automatic in the industry features a greater number of gears for quick acceleration and seamless response. For an even more involving experience, tapping the gear lever to the left or right of Drive gives you the manual-style control of Touch Shift.

b. Fingertip shift controls
Enjoying the 7-speed automatic transmission is even more fun with shift buttons behind the steering-wheel spokes that let you control the Touch Shift feature without taking your hands off the wheel.

c. Digital climate control
The CLK 500's dual-zone climate control system features left and right temperature and airflow controls, and a charcoal filter that automatically recirculates interior air when it senses an increase in smog.

A FORCE OF NATURE CREATED BY INSTANT CHEMISTRY.

The first time you see the electrifying CLK, it may strike you like a lightning bolt. With the CLK 55 AMG Cabriolet, the passionate engineers at AMG—the high-performance division of Mercedes-Benz—have created some thunder to go along. A handcrafted 5,439-cc V-8 pumps out 362 hp and 376 lb-ft of torque, to serve up 60 mph in a mere 5.2 seconds,¹ while AMG SpeedShift™ programming gives the robust 5-speed automatic transmission 35% faster gear changes—easily snapped off by Formula One-style manual-mode buttons on the

steering wheel. As responsive as it is refined, the CLK 55 also features suspension and braking systems calibrated by AMG. The muscular lines of the CLK 55 AMG sit aggressively over 18" wheels carrying 225/40 ZR18 front and 255/35 ZR18 rear high-performance tires,² while contoured side sills and a functional rear lip spoiler show the wind the quick way around. To the enthusiast, a vehicle like the CLK 55 AMG Cabriolet is more than just appreciated, it's coveted for the rarity that it is—because lightning seldom strikes the same place twice.



a.

a. AMG wheels, tires and brakes
Massive disc brakes with perforated front rotors and enlarged 6-piston front/4-piston rear AMG calipers give arresting braking performance. Staggered-width 18" double-spoke AMG alloy wheels are equally adept at stopping passersby in their tracks.



b.

b. Low-backpressure exhaust
Announcing your presence is a deep 362-hp V-8 rumble speaking through a free-flowing dual exhaust system that's also respectfully subdued at cruising speeds. Two stainless-steel tips make sure you're seen as well as heard.



c.

c. Extensive testing
AMG components are tested under brutal conditions, from our labs to the most demanding race circuits in the world. It's more than just an uncompromising way to build a performance car—it's the only way for the passionate engineers of AMG.



¹ Stated rates of acceleration are based upon manufacturer's track results and may vary depending upon model, environmental and road surface conditions, driving style, elevation and vehicle load. ² AMG 18" wheels and accompanying high-speed-rated tires provide substantially increased treadwear and reduced ride comfort compared to H-rated tires. Serious wheel and tire damage may occur if the vehicle is operated on rough or damaged road surfaces or upon encountering road debris or obstacles.





CLK55 AMG Cabriolet shown in Black/Dark Blue leather/nubuck with sand-cast aluminum trim.



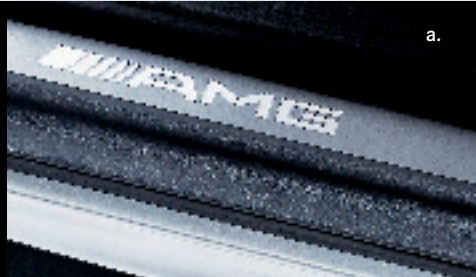
FIND YOURSELF IN THE CENTER OF THE DRIVING UNIVERSE.

When you're piloting a car capable of storming to 60 mph in just 5.2 seconds,¹ you want to be nowhere else than at the core of comfort and control. The CLK 55 AMG Cabriolet puts it all at your fingertips—literally—starting with manual shift buttons behind the spokes of the leather-wrapped steering wheel. To make sure other parts of your body are equally well supported, the driver's AMG-design heated multicontour sport seat features pneumatic side bolsters, dual lumbar supports, and thigh support. Rich Black leather bolsters and soft, sanded nubuck inserts in your choice of Black, Merlot Red or Dark Blue mean luxury need never take a back seat. Sand-cast aluminum trim lends a cool, confident presence throughout the cabin, or if your planetary preference is more Old World, rich Burl Walnut trim is optional.

a.

Badge of honor

Step over the AMG stainless-steel door sill trim and enter the world of passionate performance. Subtle metal detailing in the sport front seats proudly carries the AMG insignia as well.



a.

b.

AMG-design instrument cluster

Distinctive ivory-color instruments with bright red indicators and a matte-chrome surround are as handsome as they are quickly read. At night, soft white backlighting adds to the ambience.



b.

c.

Fingertip shift controls

Tapping the steering wheel-mounted buttons lets you manually shift up or down through the forward gears, for Formula One-inspired control without having to take your hands from the wheel.



c.

¹ Stated rates of acceleration are based upon manufacturer's track results and may vary depending upon model, environmental and road surface conditions, driving style, elevation and vehicle load.

1886

First car

1911

Multivalve engine

1934

Supercharged 500K Coupe

1952

Mercedes-Benz wins Le Mans

1954

300 SL Gullwing: fuel injection

1962

300 SE Coupe: air suspension

1967

AMG established

1985

Electronic traction control

1995

Electronic Stability Program

1997

Championship CLK-DTM racecar

2003

7-speed automatic transmission



CLK 500 Coupe shown in optional Obsidian Black metallic with optional Premium Package.

A SMOOTH OPERATOR YOU CAN TRUST.

Creating a seamless experience between you, your CLK and the road, Mercedes-Benz takes an integrated approach to performance. This means that all elements—handling, acceleration, braking—are balanced to create a driving experience that exceeds expectations in each area. At the heart of CLK performance is a variety of powerplants: a smooth and responsive new-generation V-6, a powerful and refined V-8, and an adrenaline-surgingly AMG V-8. And for each engine, there is a transmission specifically designed to give you unmatched comfort and control, whether you're enjoying a spirited drive on your favorite twisty road, or effortlessly gliding through your daily commute.



CLK 350 V-6



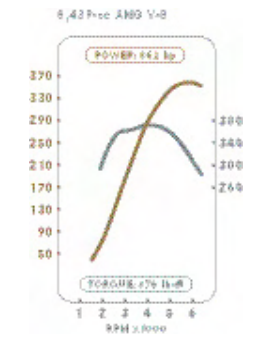
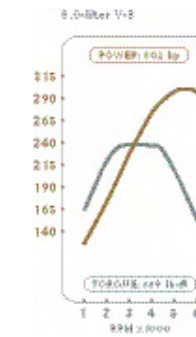
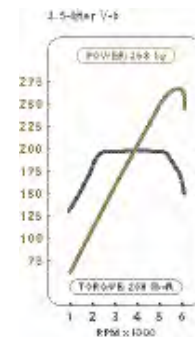
CLK 500 V-8

CLK 350 V-6 and CLK 500 V-8 engines

Giving you the responsive horses you'd expect from a maker of thoroughbreds, the new-generation 3.5-liter DOHC V-6 in the CLK 350 produces a vigorous 268 hp and 258 lb-ft of torque, and reaches 60 mph in as quick as 6.4 seconds.¹ Innovative "turbulence flaps" optimize the flow of air into the engine at various rpm, for ample low-end torque that keeps on giving throughout the rpm range. The CLK 500 is motivated by a potent 5.0-liter V-8 that puts out 302 hp and 339 lb-ft of torque to rocket you to 60 in as little as 5.7 seconds!¹

CLK 55 AMG V-8 engine

Every AMG engine is handcrafted by a single technician and carries their signature—but you'd expect no less from a masterpiece. Pistons, crankshaft and connecting rods are all reinforced for strength and are then selected by hand for ideal balance, making the CLK 55 AMG's 362-hp V-8 a unique blend of modern technology and Old World craftsmanship.



5-speed and 7-speed automatic transmissions

Whether it's the industry's first 7-speed automatic in the CLK 350 and CLK 500, or the CLK 55 AMG's robust 5-speed automatic—with AMG SpeedShift™ programming that provides 35% quicker shifts—you've got advanced powertrain management. Every CLK transmission also features our adaptive programming, which matches shift points to suit your driving demeanor. You can tap the gear lever to the left or right of Drive to enjoy the manual-style control of Touch Shift. Or hold the lever to the left for a second, and this perceptive partner will automatically choose the ideal passing gear.

¹ Coupe figures shown. 6.7 seconds for CLK 350 Cabriolet; 6.0 seconds for CLK 500 Cabriolet. Stated rates of acceleration are based upon manufacturer's track results and may vary depending upon model, environmental and road surface conditions, driving style, elevation and vehicle load.

THE GREATER THE
INSPIRATION,
THE MORE EXQUISITE THE
MASTERPIECE.

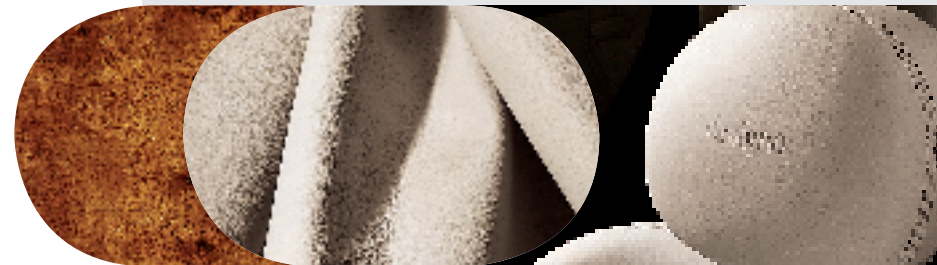
Whether it's the elegance of the Coupe's pillarless design or the rakish lines of the Cabriolet, the CLK is truly art in motion. And to the artisans of *designo*, it's the perfect canvas to create an exquisite masterpiece of color, texture and design. Their media include hand-selected and hand-fitted supple Nappa leather, distinctive wood trim selected for its appearance and hand-finished to an incomparable luster, and a rich color palette to delight the eye and stir the soul. Once you've added a CLK *designo* edition¹ to your personal collection, no other piece of automotive art will ever look the same.

Silver Edition

A worthy addition to any portfolio, this very special CLK 350 or CLK 500 glimmers in Silver metallic paint, elegantly offset on Cabriolet versions by a Black soft top. Equally rewarding is the interior, featuring the visual appeal of supple hand-fitted *designo* Stone Nappa leather on the seats, head restraints and door trim inserts. Further delighting the eye, rich *designo* Brown Poplar wood trim² has been hand-finished for exquisite beauty and placed lovingly about the cabin. The finishing touch—plush floor mats trimmed in leather and proudly badged with the *designo* insignia.



CLK350 Cabriolet *designo* Silver Edition shown with optional heated front seats.





designo

Graphite Edition

The *designo* Graphite Edition is a captivating study in contrasts for any CLK-Class. The drama begins with Graphite metallic paint—featuring a Black soft top on the Cabriolets. High intrigue is created inside with Porcelain Nappa leather on the seats, head restraints and door inserts offered in stunning counterpoint to the deep gloss of Black Piano Lacquer wood trim? Floor mats trimmed in leather and badged with the *designo* insignia provide a fitting epilogue. The Graphite Edition is proof that opposites can do more than attract—sometimes they can get along quite beautifully.



1 CLK 350 and CLK 500 *designo* editions require optional heated front seats or Comfort Package. 2 CLK 55 AMG *designo* editions include steering wheel trimmed in Black leather.

CLK 500 Coupe *designo* Graphite Edition shown with optional heated front seats.

NO ONE KNOWS YOU BETTER THAN YOU.

a. COMAND with DVD navigation

The optional COMAND system integrates the radio, CD player, GPS satellite navigation,¹ and controls for the optional phone and 6-CD changer into a single in-dash unit that you can access from the standard steering-wheel controls. A large color-LCD screen provides clear displays and crisp map readouts. And with DVD-based navigation, a single disc holds the maps of the contiguous U.S., Canada and Oahu, Hawaii. To keep your maps and points of interest as up to date as possible, ask your dealer about our NavUpdate subscription program, which lets you receive annual DVD updates for up to three years at significant savings.

b. Heated or Active Ventilated front seats

Heated front seats, optional on the CLK 350 and CLK 500 models and standard on the CLK 55 AMG, provide three levels of soothing warmth. Active Ventilated front seats, part of the Comfort Package on any CLK, also feature miniature internal fans that circulate air through perforations in the upholstery.

c. Multicontour driver's seat

Standard on the CLK 55 AMG and part of the Comfort Package on the other models, this seat offers pneumatically adjustable side bolsters, thigh support and dual lumbar supports to provide an even greater degree of personalized support.

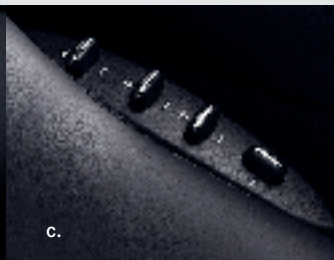
Every CLK-Class is luxuriously equipped with numerous comfort and convenience items to make any drive a special occasion. And with these innovative options, you can enhance the experience by creating your own vision of the perfect CLK. There's lighting that helps you see into corners. The ability to enter and drive off without touching a key. And an array of communication, entertainment, information and security options and services to make your in-car experience satisfying in ways you might never have imagined. And while you'd expect features like these on a car of the future, they're available on your CLK-Class today.



a.



b.



c.



d.



e./f.

d. Leather and wood steering wheel²

With this wheel's polished wood and supple leather, you'll appreciate the added luxury every time you drive. It's available to match the wood interior trim in any CLK 350 or CLK 500 and is included with their *designo* editions.

e. Active Bi-Xenon headlamps and corner-illuminating foglamps

Truly visionary thinking, active headlamps monitor your steering angle and driving speed, then shift their beams to either side to better follow the curvature of the road ahead. As a result, you get a better view into corners by increasing usable illumination by up to 90% over conventional fixed headlamps. Enhancing their abilities, corner-illuminating front foglamps can illuminate a curving roadway by monitoring steering-wheel angle and driving speed (up to 25 mph), or can be activated by your turn signal (at speeds up to 25 mph) to brighten your way into a dark driveway or alley.

f. Lowered sport suspension

Add a more aggressive stance and even sharper handling response to your CLK 350 or CLK 500. The sport-tuned suspension includes firmer coil springs and shock absorbers, along with lowered ride height.

¹ While the navigation system provides directional assistance, the driver must remain focused on safe driving behavior, including paying attention to traffic and street signs. The driver should utilize the system's audio cues while driving and should only consult the map or verbal displays once the vehicle has been stopped in a safe place. DVD-ROM maps do not cover all areas nor all routes within an area. ² Deletes steering-wheel shift buttons on CLK 500 models. ³ iPod is a registered trademark of Apple Computer, Inc.

g. Keyless Go

Optional on any CLK-Class model, this enhancement of the SmartKey system lets you unlock or lock your car with the touch of an outside door handle—without removing the key from your pocket or purse. Start-up is equally easy: Put your foot on the brake, tap a button atop the gearshift, and you're ready to take off.

h. 6-disc CD changer

Available with either the standard radio or optional COMAND system is our optional 6-disc CD changer. It's glovebox-mounted, within easy reach but concealed from sight. It can play MP3-coded CDs, and it seamlessly integrates with the CLK's audio system—via an innovative fiber-optic network—and multifunction steering wheel.

i. Electronic trunk closer

This convenient option allows you to fully open and close the trunk via a pushbutton on the driver's interior door panel. You can also close the lid from an additional button on the underside of the open trunk lid, or open it with the SmartKey remote.

j. iPod integration kit

This accessory adapter kit integrates your Apple® iPod® (sold separately) with the audio system, providing program information in the multifunction display and allowing control via the multifunction steering wheel.³

k. Hands-Free Communication System

Plug one of our sleek Motorola digital phones into your CLK and it becomes part of our optional Hands-Free Communication System.⁴ With the phone docked in the armrest cradle, your phone book is automatically downloaded into the vehicle while the phone battery charges, and the phone is connected to the vehicle's integrated antenna system. Calls are delivered through the audio system, which automatically mutes the radio or pauses the CD. You can even control calls via the multifunction steering wheel. Your Mercedes-Benz dealer offers a selection of the latest Motorola mobile phones for most major carriers.



g.



h.



i.



j.



k.

l. SIRIUS Satellite Radio

It's like having a music library of over two million songs in your Mercedes. Optional SIRIUS Satellite Radio⁵ integrates with the standard audio system and controls. Your SIRIUS subscription brings over 120 all-digital coast-to-coast channels, with 65 commercial-free channels of music, from rock to country and classical to jazz, plus 55 non-musical channels that cover news, sports—including live games from the NFL®, NHL® and NBA—and such well-known names as Discovery Channel, E!, and Radio Disney.



⁴ For safety reasons, we encourage the driver to stop the vehicle in a safe place before answering or placing a call. Always dock the phone in the cradle for use inside the vehicle. Operating a phone or radio transmitter with its own attached or built-in antenna while the engine is running can interfere with the vehicle's electronic systems. ⁵ Programming subject to change. Not available in Alaska, Hawaii or Puerto Rico. While the SIRIUS network of satellite and terrestrial antennas provides nearly seamless service throughout the contiguous U.S., SIRIUS service may be unavailable or interrupted for a variety of reasons, including environmental or topographic conditions; in certain locations such as tunnels, parking garages, or within or next to large buildings; or near other technologies that can interfere with the SIRIUS signal. SIRIUS, the dog logo and SIRIUS stream names and logos are trademarks of SIRIUS Satellite Radio. NFL® is a registered trademark of the National Football League and its affiliates. NHL® is a registered trademark of the National Hockey League. The National Basketball Association name is the property of NBA Properties, Inc.

ENGINE	CLK 350 COUPE and CABRIOLET	CLK 500 COUPE and CABRIOLET	CLK 55 AMG CABRIOLET
Engine size and type Construction	3,498-cc DOHC 24-valve 90° V-6 High-pressure die-cast alloy cylinder block. Alloy heads. Counter-rotating balance shaft	4,966-cc SOHC 24-valve 90° V-8 High-pressure die-cast alloy cylinder block. Alloy heads	5,439-cc AMG-built SOHC 24-valve 90° V-8 High-pressure die-cast alloy cylinder block. Alloy heads. Reinforced engine block, oil pan structure, pistons, connecting rods, crankshaft and valvetrain
Net power Net torque Compression ratio	268 hp @ 6,000 rpm 258 lb-ft @ 2,400–5,000 rpm 10.7:1	302 hp @ 5,600 rpm 339 lb-ft @ 2,700–4,250 rpm 10.0:1	362 hp @ 5,750 rpm 376 lb-ft @ 4,000 rpm 11.0:1
Induction	Dual overhead camshafts with continuously variable intake and exhaust timing . Magnesium 2-stage resonance intake manifold increases intake runner length at lower rpm for improved response. Electropneumatic turbulence flaps at start of intake path help increase intake airflow speed at midrange rpm for greater air–fuel mixture swirling and stronger, more complete combustion	Magnesium 2-stage resonance intake manifold increases intake runner length at lower rpm for improved response	Magnesium 2-stage resonance intake manifold increases intake runner length at lower rpm for improved response
Fuel and ignition system	ME 9.7 engine management. Integrated sequential multipoint fuel injection and ignition includes individual cylinder control of fuel spray, spark timing and antiknock. Electronic throttle. One high-energy ignition coil and spark plug per cylinder. 100,000-mile spark-plug intervals	ME 2.8 engine management. Integrated sequential multipoint fuel injection and phased twin-spark ignition includes individual cylinder control of fuel spray, spark timing/phase and antiknock. Electronic throttle. Two high-energy ignition coils and two spark plugs per cylinder. 100,000-mile spark-plug intervals	ME 2.8.1 engine management. Integrated sequential multipoint fuel injection and phased twin-spark ignition includes individual cylinder control of fuel spray, spark timing/phase and antiknock. Electronic throttle. Two high-energy ignition coils and two spark plugs per cylinder. 100,000-mile spark-plug intervals
Fuel requirement Fuel tank capacity	Premium unleaded gasoline , 91 pump octane 16.4 gal/62.0 liters (with 2.1-gal/8.0-liter reserve)	Premium unleaded gasoline , 91 pump octane 16.4 gal/62.0 liters (with 2.1-gal/8.0-liter reserve)	Premium unleaded gasoline , 91 pump octane 16.4 gal/62.0 liters (with 2.1-gal/8.0-liter reserve)

DRIVETRAIN

Transmission type	7-speed automatic	7-speed automatic	AMG-enhanced 5-speed automatic
Driver-adaptive control Touch Shift Shift into Optimum Gear Comfort mode	Electronically controlled shifting. Driver-adaptive programming adjusts shift points to the driver’s current driving style Touch Shift allows driver to manually downshift and allow upshifts by nudging the shift lever left or right from the Drive position Shift into Optimum Gear programming allows one-touch selection of the best gear for maximum acceleration or engine braking by holding the shift lever to the left of Drive for one second Driver-selectable Comfort mode starts vehicle moving in 2nd gear or a second Reverse gear, and upshifts at lower rpm, to help improve control on slippery surfaces	Electronically controlled shifting. Driver-adaptive programming adjusts shift points to the driver’s current driving style Touch Shift allows driver to manually downshift and allow upshifts by nudging the shift lever left or right from the Drive position Shift into Optimum Gear programming allows one-touch selection of the best gear for maximum acceleration or engine braking by holding the shift lever to the left of Drive for one second Driver-selectable Comfort mode starts vehicle moving in 2nd gear or a second Reverse gear, and upshifts at lower rpm, to help improve control on slippery surfaces	Electronically controlled shifting. Driver-adaptive programming adjusts shift points to the driver’s current driving style Touch Shift allows driver to manually downshift and allow upshifts by nudging the shift lever left or right from the Drive position Shift into Optimum Gear programming allows one-touch selection of the best gear for maximum acceleration or engine braking by holding the shift lever to the left of Drive for one second Driver-selectable Comfort mode starts vehicle moving in 2nd gear or a second Reverse gear, and upshifts at lower rpm, to help improve control on slippery surfaces
AMG SpeedShift with fingertip manual mode	Not available AMG SpeedShift™ programming provides up to 35% faster gear changes, automatically downshifts during braking, prevents unwanted upshifting while cornering, and features torque converter lockup in all forward gears Fingertip manual mode allows direct-access shifting through forward gears via buttons on back of upper steering-wheel spokes (left button downshifts, right button upshifts) or via Touch Shift feature of shift lever, and will automatically intervene only to select 1st gear when the vehicle stops. In Standard and Comfort modes, the steering-wheel buttons operate the Touch Shift feature	Not available	Standard
Fingertip shift control	Not available Fingertip shift control allows driver to operate Touch Shift feature via rocker-type buttons on back of upper steering-wheel spokes (both buttons can upshift and downshift)	Standard	Not available
Display	Instrument-cluster readout of selected gear range and Standard/Comfort mode	Instrument-cluster readout of selected gear range and Standard/Comfort mode	Instrument-cluster readout of selected gear range and Standard/Comfort/Manual mode
Drive configuration	Rear-wheel drive	Rear-wheel drive	Rear-wheel drive
Rear axle ratio	Coupe: 2.82:1 Cabriolet: 2.82:1	2.65:1	3.06:1

TRACTION / STABILITY

Electronic Stability Program	ESP compares the driver’s intended course, via steering and braking inputs, to the vehicle’s response, via lateral acceleration, rotation (yaw) and individual wheel speeds. ESP then brakes individual front or rear wheels and/or reduces excess engine power as needed to help correct understeer (plowing) or oversteer (fishtailing). ESP also integrates all-speed traction control, which senses drive-wheel slip under acceleration and individually brakes the slipping wheel or wheels, and/or reduces excess engine power, until control is regained ¹
-------------------------------------	---

PERFORMANCE	CLK 350 COUPE	CLK 350 CABRIOLET	CLK 500 COUPE	CLK 500 CABRIOLET	CLK 55 AMG CABRIOLET
Acceleration , 0–60 mph ²	6.4 seconds	6.7 seconds	5.7 seconds	6.0 seconds	5.2 seconds
Fuel economy , EPA estimate ³ highway estimate ⁴	Information not available. See your dealer	Information not available. See your dealer	17 mpg 25 mpg	17 mpg 25 mpg	16 mpg 22 mpg

CHASSIS	CLK 350 COUPE and CABRIOLET	CLK 500 COUPE and CABRIOLET	CLK 55 AMG CABRIOLET
Front suspension	Independent 3-link with antidive geometry. Stabilizer bar	Independent 3-link with antidive geometry. Stabilizer bar	Independent 3-link with antidive geometry. Enlarged stabilizer bar
Rear suspension	Independent 5-arm multilink with geometry for antisquat and alignment control. Stabilizer bar	Independent 5-arm multilink with geometry for antisquat and alignment control. Stabilizer bar	Independent 5-arm multilink with geometry for antisquat and alignment control. Enlarged stabilizer bar
Springs and shock absorbers	Front coil springs over gas-pressurized shock absorbers. Separate rear coil springs and gas-pressurized shock absorbers	Front coil springs over gas-pressurized shock absorbers. Separate rear coil springs and gas-pressurized shock absorbers	Front coil springs over gas-pressurized shock absorbers. Separate rear coil springs and gas-pressurized shock absorbers
Sport suspension	Optional lowered sport suspension Shorter, firmer front and rear coil springs. Sport-tuned front and rear gas-pressurized shock absorbers. Lowered ride height	Optional lowered sport suspension	Standard AMG sport suspension with AMG-calibrated front and rear coil springs and shock absorbers
Steering	Rack-and-pinion with vehicle-speed-sensitive power assist and integrated hydraulic damper. Steering wheel turns: 3.0 lock-to-lock. Turning circle: 35.3 ft/10.76 m curb-to-curb		

WHEELS / TIRES

Wheels , aluminum-alloy	5-split-spoke design, 7.5Jx17 front and 8.5Jx17 rear	AMG thin-spoke monoblock design, 7.5Jx17 front and 8.5Jx17 rear	Polished AMG double-spoke design, ⁵ 7.5Jx18 front and 8.5Jx18 rear
Tires , steel-belted radial	225/45ZR17 front and 245/40ZR17 rear, high-performance ⁶	225/45ZR17 front and 245/40ZR17 rear, high-performance ⁶	225/40ZR18 front and 255/35ZR18 rear, high-performance ⁵

BRAKES

Brake system	Dual-circuit power-assisted 4-wheel disc	Dual-circuit power-assisted 4-wheel disc	AMG-enhanced dual-circuit power-assisted 4-wheel disc
Brake discs/calipers, front	11.8" internally ventilated/single-piston floating calipers	13.6" internally ventilated/composite 4-piston fixed calipers	13.4" perforated and internally ventilated/enlarged AMG compound 6-piston fixed calipers
Brake discs/calipers, rear	11.4" solid/dual-piston fixed calipers	11.8" internally ventilated/dual-piston fixed calipers	13.0" internally ventilated/AMG 4-piston fixed calipers
Antilock Braking System	ABS senses impending wheel lockup under heavy braking and pumps the front brakes individually or the rear brakes together (to help maintain stability) as needed up to 30 times per second, to prevent lockup and maintain steering ability		
Brake Assist	Brake Assist senses emergency braking via the speed at which the driver presses the brake pedal and immediately applies maximum available power boost, potentially reducing the overall stopping distance by eliminating the delay caused by a common human tendency not to brake hard enough, soon enough. Letting up on the brake pedal releases Brake Assist ⁷		

EXTERIOR DIMENSIONS⁸

	CLK 350 COUPE	CLK 350 CABRIOLET	CLK 500 COUPE	CLK 500 CABRIOLET	CLK 55 AMG CABRIOLET
Wheelbase	106.9 in/2,715 mm	106.9 in/2,715 mm	106.9 in/2,715 mm	106.9 in/2,715 mm	106.9 in/2,715 mm
Overall length	183.2 in/4,652 mm	183.2 in/4,652 mm	183.2 in/4,652 mm	183.2 in/4,652 mm	183.2 in/4,652 mm
Overall height	55.4 in/1,406 mm	54.4 in/1,381 mm	55.4 in/1,408 mm	54.4 in/1,381 mm	54.4 in/1,381 mm
Overall width	68.5 in/1,740 mm	68.5 in/1,740 mm	68.5 in/1,740 mm	68.5 in/1,740 mm	68.5 in/1,740 mm
Track, front	58.9 in/1,495 mm	58.9 in/1,495 mm	58.9 in/1,495 mm	58.9 in/1,495 mm	58.9 in/1,495 mm
Track, rear	58.0 in/1,474 mm	58.0 in/1,474 mm	58.0 in/1,474 mm	58.0 in/1,474 mm	58.0 in/1,474 mm
Coefficient of drag	0.29	0.31	0.30	0.32	0.32
Curb weight	3,585 lb/1,625 kg	3,845 lb/1,743 kg	3,585 lb/1,626 kg	3,905 lb/1,770 kg	3,960 lb/1,795 kg

INTERIOR DIMENSIONS⁸

	COUPES	FRONT	REAR	CABRIOLETS	FRONT	REAR
Headroom		37.1 in/941 mm	35.8 in/908 mm		38.4 in/976 mm	36.3 in/921 mm
Legroom		42.0 in/1,067 mm	33.0 in/837 mm		42.0 in/1,067 mm	30.4 in/772 mm
Hiproom		53.7 in/1,364 mm	45.9 in/1,167 mm		52.1 in/1,324 mm	46.9 in/1,190 mm
Shoulder room		53.2 in/1,351 mm	49.3 in/1,252 mm		53.2 in/1,351 mm	48.5 in/1,233 mm
Cabin capacity	81.5 cu ft/2,308 liters			85.2 cu ft/2,412 liters		
Trunk capacity	10.4 cu ft/294 liters			8.6 cu ft/244 liters, top up—5.4 cu ft/152 liters, top down		

1 No system, regardless of how advanced, can overcome physics or correct careless driving. Best performance in snow is obtained with winter tires. Please always wear your seat belt.

2 Stated rates of acceleration are based upon manufacturer's track results and may vary depending upon model, environmental and road surface conditions, driving style, elevation and vehicle load.

3 2005 EPA estimated fuel economy. Compare the estimated mpg to the estimated mpg of other vehicles. You may get different mileage depending on how fast you drive, weather

conditions and trip length. 2006 figures unavailable at time of publication. See your dealer. 4 Your actual highway mileage will probably be less than the highway estimate. 2005 figures shown. 2006 figures unavailable at time of publication.

5 AMG 18" wheels and accompanying high-speed-rated tires provide substantially increased treadwear and reduced ride comfort compared to H-rated tires. Serious wheel and tire damage may occur if the vehicle is operated on rough or damaged road surfaces or upon encountering road debris or obstacles.

6 Z-rated tires are optimized for performance driving and may provide reduced ride comfort, increased tire noise, substantially increased treadwear and greater susceptibility to damage compared with H-rated tires.

7 Braking effectiveness also depends on proper brake system maintenance, and tire and road conditions.

8 Coupe interior dimensions are with optional sunroof. Cabriolet dimensions are with top up unless otherwise noted.

CLK 350 Coupe
CLK 350 Cabriolet
CLK 500 Coupe
CLK 500 Cabriolet
CLK 55 AMG Cabriolet

EXTERIOR APPEARANCE

■ ■ - - -	Atlas Grey grille with three chrome ribs
- - ■ ■ ■	Black grille with three chrome ribs
- - ■ ■ ■	AMG-design front air dam with mesh air intakes and chrome-ringed round front foglamps. AMG-design side skirts and rear apron
- - ■ ■ ■	Color-keyed AMG-design rear spoiler on edge of trunk lid
■ ■ - - -	Enlarged polished stainless-steel exhaust finisher
- - ■ ■ -	Dual polished AMG stainless-steel exhaust finishers
- - - - ■	Low-backpressure exhaust system with dual polished AMG stainless-steel finishers
■ ■ - - -	Red and white rear lamp covers
- - ■ ■ ■	Red and smoke-color rear lamp covers

EXTERIOR FEATURES

- ■ - ■ ■	Electrohydraulic insulated all-season soft top with flush-bonded glass rear window. Fully automatic operation allows soft top and all four side windows to be lowered or raised from a single control on the console or from outside the car using the SmartKey remote (see Locking/Security, at right)
■ ■ ■ ■ ■	Dual power mirrors, linked to driver's seat memory and automatically heated
□ ¹ □ ¹ ■ ■ ■	Auto-dimming left-side mirror
■ ■ ■ ■ ■	Parking-assist right-side mirror can be programmed to tilt down upon shifting to Reverse
■ ■ ■ ■ ■	Electrically heated rear window with auto-shutoff based on time and outside temperature
■ ■ ■ ■ ■	Dual aero-blade windshield wipers. Heated windshield washer nozzles
■ ■ ■ ■ ■	Infrared rain sensor automatically adjusts wiper speed and intermittent wiper frequency from infinite delay to fast wiping speed based on amount of rainfall measured on windshield
□ ¹ □ ¹ □ ¹ □ ¹ ■	Heated windshield washer reservoir and fluid lines

EXTERIOR LIGHTING

■ ■ ■ ■ ■	Variable-focus halogen headlamps with clear high-impact polycarbonate lenses
■ ■ ■ ■ ■	Halogen front foglamps, in front apron. Single red rear foglamp, integrated in left taillamp cluster
■ ■ ■ ■ ■	Driver-selectable light-sensing headlamps can be set via the Auto position of the headlamp switch to automatically illuminate in darkness, and when entering dark tunnels or parking garages
■ ■ ■ ■ ■	Driver-programmable Daytime Running Lamps illuminate low-beam headlamps at reduced intensity (full intensity for optional Bi-Xenon lamps) in daylight, with auto-on override in darkness
■ ■ ■ ■ ■	Automatic lamp substitution uses a nearby lamp if a critical bulb fails
■ ■ ■ ■ ■	Touch Turn Signals flash three times with one touch of turn-signal lever, for lane-changing. Auxiliary LED turn signal indicators are integrated with side mirror housings

CLK 350 Coupe
CLK 350 Cabriolet
CLK 500 Coupe
CLK 500 Cabriolet
CLK 55 AMG Cabriolet

LOCKING / SECURITY

■ ■ ■ ■ ■	SmartKey uses an electronic code to unlock the steering column and ignition. Removing SmartKey from ignition disables engine computer to help prevent unauthorized starting
■ ■ ■ ■ ■	SmartKey remote control integrates: <ul style="list-style-type: none"> - Door lock/unlock buttons - Trunk opener with valet lockout - Removable valet key - Panic alarm - Driver may selectively unlock only the driver's door and fuel filler, or both doors plus the trunk and fuel filler
■ ■ ■ ■ ■	SmartKey remote locking uses redundant infrared and radio-frequency signals for improved range, and rolling-code signal for protection from transmitter cloning
■ ■ ■ ■ ■	SmartKey offers infrared-remote opening/closing of windows (plus optional sunroof on Coupes, if equipped, and remote raising and lowering of soft top on Cabriolets) from outside the car
■ ■ ■ ■ ■	Driver-programmable driveaway locking can automatically lock all the doors when the car reaches 9 mph
■ ■ ■ ■ ■	Night security illumination uses the car's exterior lights to help illuminate a path after parking. Driver-programmable intervals allow lights to stay on for 60, 45, 30 or 15 seconds, or not at all
■ ■ ■ ■ ■	Locator lighting uses the car's lights to help light a return path when the car is remote-unlocked in darkness. Unlocking car activates illuminated entry system
■ ■ ■ ■ ■	Automatic antitheft alarm system with remote panic feature
■ ■ ■ ■ ■	Emergency trunk release, located inside trunk and illuminated for 60 minutes after trunk lid is closed
□ ¹ □ ¹ ■ ■ ■	Integrated 3-button garage door control, compatible with HomeLink [®] components and some other systems
■ ■ ■ ■ ■	Tele Aid GPS-based Stolen Vehicle Recovery allows law enforcement agencies to track and recover stolen vehicle ²
■ ■ ■ ■ ■	Tele Aid Remote Door Unlock allows owner to have doors automatically unlocked in the event the SmartKey becomes locked inside vehicle ²
■ ■ ■ ■ ■	Tele Aid Automatic Alarm Notification alerts Mercedes-Benz to contact vehicle owner if antitheft alarm sounds ²

¹ Also available or only available as part of an Option Package, or may require additional options. See optional equipment listing on page 25.

² First year's Tele Aid Security & Care service provided at no additional cost with subscription. Subscription and acquaintance call required for service to be active. System operates only where cellular and GPS coverage are available, and requires adequate power supply. Owner must authorize stolen vehicle tracking with a PIN code and file a police report. See dealer for details of telematics services.

³ Rear seats cannot be occupied while wind deflector is in place.

⁴ Deleted with optional wood and leather trimmed steering wheel or CLK 500 *designo* editions.

CLK 350 Coupe
 CLK 350 Cabriolet
 CLK 500 Coupe
 CLK 500 Cabriolet
 CLK 55 AMG Cabriolet

INTERIOR FEATURES

■ ■ ■ ■ ■	Multifunction steering wheel provides convenient, additional controls for basic functions of audio system and optional phone, plus operation of multifunction display (see Instrumentation, page 24)
- - ■ ■ ■	Fingertip shift buttons behind steering-wheel spokes
■ ■ ■ ■ ■	Power front and rear side windows, with one-touch express-up/down for front windows
- ■ - ■ ■	One-button lowering or raising of all four windows via power soft-top switch
- ■ - ■ ■	Fine-mesh wind deflector fastens over rear seat area or folds into molded case for storage in trunk ³
■ ■ ■ ■ ■	4-way (tilt/telescoping) power steering column, position linked to driver's seat memory
■ ■ ■ ■ ■	Electronic cruise control
■ ■ ■ ■ ■	Delayed-shutoff courtesy lamps, front (and rear on Coupes). Entrance lamps in both doors. Dual front reading lamps. Dual sun visors with illuminated vanity mirrors
□ ¹ □ ¹ ■ ■ ■	Auto-dimming rearview mirror
■ ■ ■ ■ ■	Height-adjustable front center armrest with dual enclosed storage compartments and 3-way lid (upper tray opens from left or right, lower compartment from front). Illuminated 2-tier glovebox
■ ■ ■ ■ ■	Retractable front cupholder in dash. Pockets in both doors. Parcel net in right front footwell
■ ■ ■ ■ ■	Magazine pockets on both front seatbacks
■ - ■ - ■ -	Folding rear center armrest with slide-out dual cupholder. Open center console between rear seats
- ■ - ■ ■	Folding rear center armrest
■ ■ ■ ■ ■	Illuminated, carpeted trunk (with tie-down hooks on Coupes)
- ■ - ■ ■	Variable trunk compartment allows soft-top well to be used for additional cargo capacity with top up

CLIMATE CONTROL

■ ■ - - -	Dual-zone CFC-free automatic climate control with: - Dual rotary temperature controls - Automatic control of blower speed and airflow distribution (with manual override)
- - ■ ■ ■	Digital dual-zone CFC-free automatic climate control with: - Individual left and right digital temperature controls and rotary airflow distribution controls - Automatic control of blower speed and airflow distribution (with manual override) - Sun sensor - Humidity/dewpoint sensor, to help reduce window fogging during humid weather, and help prevent overdrying of cooled air - Activated charcoal filter with smog-sensing automatic recirculation of filtered cabin air
■ ■ ■ ■ ■	Dash-top diffuser vent. Rear-cabin air vents at rear of front console
■ ■ ■ ■ ■	Electrostatic dust and pollen filter
■ ■ ■ ■ ■	Tunnel mode offers one-touch closing of all windows, the sunroof (if equipped) and cabin air intake by pressing and holding the air-recirculation button. Pressing button again restores previous window and sunroof positions
- - ■ ■ ■	REST mode can ventilate cabin or help keep cabin warmer using residual heat for up to 30 minutes after car is turned off

CLK 350 Coupe
 CLK 350 Cabriolet
 CLK 500 Coupe
 CLK 500 Cabriolet
 CLK 55 AMG Cabriolet

■ STANDARD
 □ OPTIONAL
 - NOT AVAILABLE

SEATING

■ ■ ■ ■ ■	10-way power front seats, each with 3-position memory. Driver's seat memory includes steering column and outside mirror positions
- - - - ■	AMG-design sport front seats
□ □ □ □ ■	Heated front seats
□ ¹ □ ¹ □ ¹ □ ¹ ■	Multicontour driver's seat with pneumatically adjustable side bolsters, dual lumbar supports and thigh support
■ ■ ■ ■ ■	Easy-entry system: When either front seatback is tipped forward, the entire front seat moves up and forward for easier access to rear cabin. Seat returns to its previous position when seatback is returned upright
■ ■ ■ ■ ■	Dual individually contoured rear seats
■ - ■ - -	60/40-split folding rear seatbacks and flip-forward seat cushions

UPHOLSTERY / TRIM

■ ■ □ □ -	Premium leather upholstery on seating surfaces, head restraints, front-seat side panels and door trim inserts. Carpets, dash, consoles and door panels in complementary color
- - ■ ■ -	Premium leather upholstery on seating surfaces, head restraints, front-seat side panels and door trim inserts. Carpets, dash, consoles and door panels in Black
- - - - ■	AMG-design two-tone Nappa leather upholstery featuring soft, sanded nubuck leather for perforated seat center panels and door trim inserts. Carpets, dash, consoles and door panels in Black
■ ■ ■ ■ -	Leather-trimmed 4-spoke steering wheel and shift knob
- - - - ■	AMG-design leather-trimmed 4-spoke steering wheel and shift knob
■ ■ ■ ■ ■	Leather-trimmed shift knob with chrome trim
■ ■ □ □ □	Hand-polished Burl Walnut wood trim on doors, dash and console
- - ■ ■ -	Hand-polished Black Ash wood trim on doors, dash and console
- - - - ■	AMG-design aluminum trim with sand-cast finish on doors, dash and console
■ ■ ■ ■ ■	Polished chrome outlining for wood or aluminum interior trim and vent registers
■ ■ - - ■	Rubber-studded brushed stainless-steel pedals (including parking brake)
■ ■ ■ ■ ■	Stainless-steel door sill trim (with AMG insignia on CLK 55 AMG)
■ ■ ■ ■ ■	Velour floor carpeting and floor mats (exclusive AMG floor mats on CLK 55 AMG)

CLK-Class equipment continues.

CLK 350 Coupe
CLK 350 Cabriolet
CLK 500 Coupe
CLK 500 Cabriolet
CLK 55 AMG Cabriolet

AUDIO / TELEMATICS

■ ■ ■ ■ ■	AM/FM stereo/weatherband radio with in-dash single-CD player
■ ■ ■ ■ ■	In-dash audio system operating panel integrates controls and displays for the radio, CD player, and optional glovebox-mounted 6-disc CD changer, SIRIUS Satellite Radio and portable digital telephone
■ ■ ■ ■ ■	6-speaker audio system. Automatic speed-sensitive volume adjustment
□ ¹ □ ¹ □ ¹ □ ¹ ■	harman/kardon® LOGIC7® digital surround sound system: <ul style="list-style-type: none"> – 12 speakers (Coupes) or 10 speakers (Cabriolets), including dual surround speakers and a subwoofer – 7.1-channel amplifier with 320 watts (Coupes) or 240 watts (Cabriolets) total output – Multichannel digital surround-sound technology developed for the professional recording industry, to provide a natural and realistic sound stage – Digital Dynamic Volume Control, to help preserve the sound balance under all driving conditions
■ ■ ■ ■ ■	Fiber-optic network offers precise, high-speed communication among components. Factory preparation for optional CD changer and cellular phone, using fiber-optic network
■ ■ ■ ■ ■	Tele Aid system uses GPS satellites plus a cellular link to provide 24-hour live assistance for: emergency aid (SOS button), information (i-button) or Roadside Assistance (wrench button) <ul style="list-style-type: none"> – Basic Tele Aid Security & Care service includes Automatic Collision Notification, Stolen Vehicle Recovery, Remote Door Unlock service and Dealer Connect²

INSTRUMENTATION

■ ■ ■ ■ ■	–	Electronic analog speedometer, tachometer and quartz clock. Electronic bar-graph fuel and coolant temperature gauges
■ ■ □ ¹ □ ¹ –	–	Black gauges with white markings, glacier blue backlighting, chrome rings and black surround
– – ■ ■ ■	–	Ivory-color gauges with soft white backlighting, chrome rings and matte chrome surround
– – – – ■	–	AMG-design ivory-color gauges with soft white backlighting and matte chrome surround
■ ■ ■ ■ ■	■	Digital display for odometer and Touch Shift gear/mode selection
■ ■ ■ ■ ■	■	Multifunction display in center of speedometer, scrolled via steering-wheel controls to operate and display various menus and vehicle features: <ul style="list-style-type: none"> – Resettable trip meter and outside temperature indicator – Digital speedometer, Maintenance System (see below), and engine oil-level check – Radio station, CD player/CD changer,³ iPod® playlist/track (with accessory iPod integration kit) – Navigation system route guidance³ – Vehicle reminder and malfunction messages – Driver-programmable settings for instruments, lighting, vehicle and convenience features – Trip computer (elapsed time, fuel consumption, distance to empty) – Mobile phone book³
■ ■ ■ ■ ■	■	Mercedes-Benz Maintenance System displays distance remaining to next basic maintenance service, indicates type of service due, and provides automatic reminder feature when service interval draws near
■ ■ ■ ■ ■	■	Audible reminders and messages for open door or sunroof (if equipped); exterior lamp failure; low fuel, engine oil, coolant and washer fluid; and to release parking brake, switch off headlamps and remove ignition key

CLK 350 Coupe
CLK 350 Cabriolet
CLK 500 Coupe
CLK 500 Cabriolet
CLK 55 AMG Cabriolet

RESTRAINT SYSTEMS

■ ■ ■ ■ ■	■	Integrated Restraint System: <ul style="list-style-type: none"> – Driver and front passenger are each provided with a front air bag, a side-impact air bag (Coupes) or head/thorax air bag (Cabriolets), and a 3-point seat belt with an Emergency Tensioning Device (ETD) and adaptive belt force limiter⁴ – Rear passengers are each provided with a 3-point seat belt with ETD and belt force limiter
■ – ■ – ■ –	–	Head Protection Curtains: <ul style="list-style-type: none"> – In a side impact exceeding a preset threshold, a multi-chamber air bag deploys along the front and rear side windows on the affected side of the car
■ ■ ■ ■ ■	■	Adaptive dual-stage front air bags are deployed in response to frontal impact severity ⁴
■ ■ ■ ■ ■	■	Occupant Classification System (OCS) automatically turns the front passenger's front air bag on or off based on the weight category determined by weight sensor readings from the front passenger seat ⁴
□ □ □ □ ■	■	Rear side-impact air bags, mounted in side trim panels
■ ■ ■ ■ ■	■	ETDs are provided for all four seat belts and are deployed in a front or rear impact exceeding a preset threshold of severity, or certain rollovers. A front ETD will not deploy if seat belt is unfastened
■ ■ ■ ■ ■	■	Automatic Collision Notification engages Tele Aid SOS function if an air bag or ETD deploys ²
■ ■ ■ ■ ■	■	Universal LATCH system (Lower Anchors and Tethers for Children) at rear seating positions. Selectable passenger seat-belt retractors help secure child seats ⁴
■ ■ ■ ■ ■	■	Front seat belts include automatic presenters and lower points attached to seat frames
■ ■ ■ ■ ■	■	Rear seat belts include automatically height-adjusting shoulder belts
■ ■ ■ ■ ■	■	Front head restraints power-adjust for height, manually adjust fore-aft, and automatically height-adjust as seat is moved fore-aft
■ ■ ■ ■ ■	■	Active front head restraints reduce the distance between the head restraint and the head in the event of a rear-end collision, helping limit rearward movement of the head and thereby reducing the chances of "whiplash" type injuries to the cervical spine
■ – ■ – ■ –	–	Dual individually retractable rear head restraints, adjustable for height and 2-position tilt
– ■ – ■ ■ ■	–	Dual height-adjustable rear head restraints ⁵
■ ■ ■ ■ ■	■	Driver can retract both head restraints remotely via a dash-mounted control, for improved rearward vision when the rear seats are unoccupied
– ■ – ■ ■ ■	–	Automatic rollover-sensing pop-up roll bars, integrated with dual rear-seat head restraints ⁵

1 Also available or only available as part of an Option Package, or may require additional options. See optional equipment listing at right.

2 First year's Tele Aid Security & Care service provided at no additional cost with subscription. Subscription and acquaintance call required for service to be active. System operates only where cellular and GPS coverage are available, and requires adequate power supply. Owner must authorize stolen vehicle tracking with a PIN code and file a police report. See dealer for details of telematics services.

3 When so equipped.

4 **WARNING:** THE FORCES OF A DEPLOYING AIR BAG CAN CAUSE SERIOUS OR FATAL INJURY TO A CHILD UNDER AGE 13. THE SAFEST SEATING POSITION FOR YOUR CHILD IS IN THE REAR SEAT, BELTED INTO AN APPROPRIATE, PROPERLY INSTALLED CHILD SEAT, OR CORRECTLY WEARING A SEAT BELT IF TOO LARGE FOR A CHILD SEAT. OCS IS DESIGNED TO TURN THE FRONT PASSENGER'S FRONT AIR BAG OFF WHEN THE SYSTEM SENSES THE WEIGHT OF A TYPICAL CHILD 12 MONTHS OLD OR LESS, PLUS THE WEIGHT OF A STANDARD APPROPRIATE CHILD RESTRAINT.

SEE OPERATOR'S MANUAL FOR IMPORTANT ADDITIONAL INFORMATION ON THESE SYSTEMS, AND FOR FURTHER INFORMATION REGARDING THE TRANSPORTATION OF CHILDREN HEAVIER THAN A TYPICAL 12-MONTH-OLD.

5 The roll bar system is designed to enhance the level of rollover protection compared to an open vehicle without one. No system, no matter

CLK 350 Coupe
CLK 350 Cabriolet
CLK 500 Coupe
CLK 500 Cabriolet
CLK 55 AMG Cabriolet

INDIVIDUAL OPTIONS

<input type="checkbox"/>	<input type="checkbox"/>	<input type="checkbox"/>	<input type="checkbox"/>	<input type="checkbox"/>	Lowered sport suspension (see page 18; AMG sport suspension standard on CLK 55 AMG)
<input type="checkbox"/>	<input type="checkbox"/>	<input type="checkbox"/>	<input type="checkbox"/>	<input type="checkbox"/>	Keyless Go vehicle entry and starting system (see page 19)
<input type="checkbox"/>	<input type="checkbox"/>	<input type="checkbox"/>	<input type="checkbox"/>	<input type="checkbox"/>	Electronic trunk closer (see page 19)
<input type="checkbox"/>	<input type="checkbox"/>	<input type="checkbox"/>	<input type="checkbox"/>	<input checked="" type="checkbox"/>	Heated front seats
<input type="checkbox"/>	<input type="checkbox"/>	<input type="checkbox"/>	<input type="checkbox"/>	<input type="checkbox"/>	Active Ventilated front seats, with heating feature
<input type="checkbox"/>	<input type="checkbox"/>	<input type="checkbox"/>	<input type="checkbox"/>	<input type="checkbox"/>	Leather and wood trimmed steering wheel (also included with CLK 350 and CLK 500 <i>designo</i> editions; deletes steering-wheel fingertip shift buttons on CLK 500 models)
<input checked="" type="checkbox"/>	<input checked="" type="checkbox"/>	<input type="checkbox"/>	<input type="checkbox"/>	<input type="checkbox"/>	Premium leather upholstery with carpets, dash, consoles and door panels in complementary color. Burl Walnut wood interior trim. Black gauges with white markings, chrome rings and black surround
<input checked="" type="checkbox"/>	<input checked="" type="checkbox"/>	<input type="checkbox"/>	<input type="checkbox"/>	<input type="checkbox"/>	Burl Walnut wood interior trim
<input type="checkbox"/>	<input type="checkbox"/>	<input type="checkbox"/>	<input type="checkbox"/>	<input type="checkbox"/>	Glovebox-mounted 6-disc CD changer with MP3 capability
<input type="checkbox"/>	<input type="checkbox"/>	<input type="checkbox"/>	<input type="checkbox"/>	<input type="checkbox"/>	COMAND Cockpit Management and Data system integrates: – DVD-based in-dash GPS navigation system, with map database for the contiguous U.S., Canada and Oahu, Hawaii, all on a single DVD. ⁶ DVD-ROM drive concealed behind in-dash screen – AM/FM stereo/weatherband radio – In-dash single-CD player – Controls for optional glovebox-mounted 6-CD changer and phone – A 6.5" color-LCD in-dash screen, with motorized opening/closing to load CD player and DVD drive – Ten mode-dependent soft keys alongside screen for easy access to commands and on-screen menus – Auxiliary input jack in glovebox for connection of an MP3 player to audio system
<input type="checkbox"/>	<input type="checkbox"/>	<input type="checkbox"/>	<input type="checkbox"/>	<input type="checkbox"/>	SIRIUS Satellite Radio equipment with 6-month subscription (see page 19) ⁷
<input type="checkbox"/>	<input type="checkbox"/>	<input type="checkbox"/>	<input type="checkbox"/>	<input type="checkbox"/>	Hands-Free Communication System. (Requires accessory telephone handset and cradle, sold separately. See your dealer for selection)
<input type="checkbox"/>	<input type="checkbox"/>	<input type="checkbox"/>	<input type="checkbox"/>	<input checked="" type="checkbox"/>	Rear side-impact air bags, mounted in side trim panels
<input type="checkbox"/>	<input type="checkbox"/>	<input type="checkbox"/>	<input type="checkbox"/>	<input type="checkbox"/>	Parktronic audio-visual parking assistance system uses ultrasonic sensors in the front and rear bumpers to help detect nearby obstacles within the sensors' field of view at parking speeds, alerting driver to their proximity and direction via audio-visual indicators on dash and rear-cabin wall
<input type="checkbox"/>	<input type="checkbox"/>	<input type="checkbox"/>	<input type="checkbox"/>	<input type="checkbox"/>	Metallic paint (no charge on CLK 55 AMG)

how sophisticated, can eliminate the chance of injury in an accident. Please always wear your seat belt, and always raise the rear head restraints when the rear seats are occupied.

⁶ While the navigation system provides directional assistance, the driver must remain focused on safe driving behavior, including paying attention to traffic and street signs. The driver should utilize the system's audio cues while driving and should only consult the map or verbal displays once the vehicle has been stopped in a safe place. DVD-ROM maps do not cover all areas nor all routes within an area. One U.S./Canada DVD-ROM is included with vehicle.

⁷ See dealer for availability details. While the SIRIUS network of satellite and terrestrial antennas provides nearly seamless service throughout the contiguous U.S., SIRIUS service may be unavailable or interrupted for a variety of reasons, including environmental or topographic conditions; in certain locations such as tunnels, parking garages, or within or next to large buildings; or near other technologies that can interfere with the SIRIUS signal. Programming subject to change. Not available in Alaska, Hawaii or Puerto Rico.

⁸ CLK 350 *designo* editions require heated front seats or Comfort Package.

⁹ CLK 500 *designo* editions require heated front seats or Comfort Package, and delete steering-wheel fingertip shift buttons.

CLK 350 Coupe
CLK 350 Cabriolet
CLK 500 Coupe
CLK 500 Cabriolet
CLK 55 AMG Cabriolet

■ STANDARD
□ OPTIONAL
– NOT AVAILABLE

OPTION PACKAGES

<input type="checkbox"/>	<input type="checkbox"/>	<input type="checkbox"/>	<input type="checkbox"/>	<input type="checkbox"/>	Lighting Package (see page 18): – Bi-Xenon headlamps with active curve illumination – Heated headlamp washers – Corner-illuminating front foglamps
<input type="checkbox"/>	<input type="checkbox"/>	<input type="checkbox"/>	<input type="checkbox"/>	<input type="checkbox"/>	Comfort Package: – Active Ventilated front seats, with heating feature – Multicontour driver's seat (standard on CLK 55 AMG)
<input type="checkbox"/>	<input type="checkbox"/>	<input type="checkbox"/>	<input type="checkbox"/>	<input type="checkbox"/>	Premium Package: – harman/kardon LOGIC7 digital surround sound system (see Audio/Telematics, at left; standard on CLK 55 AMG) – Glovebox-mounted 6-disc CD changer with MP3 capability – Heated windshield washer reservoir and fluid lines (standard on CLK 55 AMG) CLK 350 models add: – Integrated 3-button garage door control (standard on CLK 500 and CLK 55 AMG) – Auto-dimming left-side and inside rearview mirrors (standard on CLK 500 and CLK 55 AMG) CLK 350 and CLK 500 Coupe models add: – Power tilt/sliding tinted glass sunroof with one-touch open/close
<input type="checkbox"/>	<input type="checkbox"/>	<input type="checkbox"/>	<input type="checkbox"/>	<input type="checkbox"/>	Run-flat Tire Package: – Mercedes-Benz extended-mobility tires – Low tire-pressure warning system (indicated in multifunction display)

designo EDITIONS

<input type="checkbox"/>	<input checked="" type="checkbox"/>	<input type="checkbox"/>	<input type="checkbox"/>	<input type="checkbox"/>	<input type="checkbox"/>	<input type="checkbox"/>	<input type="checkbox"/>	<input type="checkbox"/>	<input type="checkbox"/>	Silver Edition: – <i>designo</i> Silver metallic paint – Black soft top (Cabriolet models) – Stone interior with <i>designo</i> Stone Nappa leather and Brown Poplar wood trim – Wood and leather trimmed steering wheel – Stone <i>designo</i> floor mats with leather trim
<input type="checkbox"/>	<input checked="" type="checkbox"/>	<input type="checkbox"/>	<input type="checkbox"/>	<input type="checkbox"/>	<input type="checkbox"/>	<input type="checkbox"/>	<input type="checkbox"/>	<input type="checkbox"/>	<input type="checkbox"/>	Graphite Edition: – <i>designo</i> Graphite metallic paint – Black soft top (Cabriolet models) – Black interior with <i>designo</i> Porcelain Nappa leather and Black Piano Lacquer wood trim – Wood and leather trimmed steering wheel (except CLK 55 AMG) – Black <i>designo</i> floor mats with leather trim

COLOR COMBINATIONS

CLK 350			040	189	197	357	359	541	590	723	747	762	775	960
	Paint	Code Color	Black	Black Opal ¹	Obsidian Black ¹	Cadet Blue ¹	Capri Blue ¹	Storm Red ^{1,2}	Mars Red	Pewter ¹	Granite Grey ^{1,2}	Diamond Silver ¹	Iridium Silver ¹	Alabaster White
CLK 350 COUPE	Upholstery and trim	Color	•	•	•	•	•	•	•	•	•	•	•	•
	■ Standard premium leather with dash, doors and carpeting in complementary color	Black	•	•	•	•	•	•	•	•	•	•	•	•
	– Includes Burl Walnut wood trim	Stone	•	•	•	•	•	•	•	•	•	•	•	•
		Ash	•	•	•	•	•	•	•	•	•	•	•	•
CLK 350 CABRIOLET	Soft top	■ Black ■ Blue □ Ash	■ □	■ □	■ □	■ ■ □	■ ■ □	■ □	■ □	■	■ □	■ ■ □	■ ■ □	■ ■ □
Upholstery and trim		Color	• •	• •	• •	• • –	• • •	• –	• –	•	• •	• – –	• – •	• – •
	■ Standard premium leather with dash, doors and carpeting in complementary color	Black	• –	• –	• –	• • –	• • –	• –	• –	•	• •	• • –	• – •	• • •
	– Includes Burl Walnut wood trim	Stone	• •	• •	• •	• • •	• • •	• •	• •	•	• •	• • •	• • •	• • •
		Ash	• •	• •	• •	• • •	• • •	• •	• •	•	• •	• • •	• • •	• • •
CLK 500			040	189	197	357	359	541	590	723	747	762	775	960
	Paint	Code Color	Black	Black Opal ¹	Obsidian Black ¹	Cadet Blue ¹	Capri Blue ¹	Storm Red ^{1,2}	Mars Red	Pewter ¹	Granite Grey ^{1,2}	Diamond Silver ¹	Iridium Silver ¹	Alabaster White
CLK 500 COUPE	Upholstery and trim	Color	•	•	•	•	•	•	•	•	•	•	•	•
	■ Standard premium leather with dash, doors and carpeting in Black	Black	•	•	•	•	•	•	•	•	•	•	•	•
	– Includes Black Ash wood trim	Stone	•	•	•	•	•	•	•	•	•	•	•	•
		Ash	•	•	•	•	•	•	•	•	•	•	•	•
	□ Optional premium leather with dash, doors and carpeting in complementary color	Black	•	•	•	•	•	•	•	•	•	•	•	•
	– Includes Burl Walnut wood trim	Stone	•	•	•	•	•	•	•	•	•	•	•	•
		Ash	•	•	•	•	•	•	•	•	•	•	•	•
CLK 500 CABRIOLET	Soft top	■ Black ■ Blue □ Ash	■ □	■ □	■ □	■ ■ □	■ ■ □	■ □	■ □	■	■ □	■ ■ □	■ ■ □	■ ■ □
Upholstery and trim		Color	• •	• •	• •	• • –	• • •	• –	• –	•	• •	• – –	• – •	• – •
	■ Standard premium leather with dash, doors and carpeting in Black	Black	• –	• –	• –	• • –	• • –	• –	• –	•	• •	• • –	• – •	• • •
	– Includes Black Ash wood trim	Stone	• •	• •	• •	• • •	• • •	• •	• •	•	• •	• • •	• • •	• • •
		Ash	• •	• •	• •	• • •	• • •	• •	• •	•	• •	• • •	• • •	• • •
	□ Optional premium leather with dash, doors and carpeting in complementary color	Black	• •	• •	• •	• • –	• • •	• –	• –	•	• •	• – –	• – •	• – •
	– Includes Burl Walnut wood trim	Stone	• –	• –	• –	• • –	• • –	• –	• –	•	• •	• • –	• – •	• • •
		Ash	• •	• •	• •	• • •	• • •	• •	• •	•	• •	• • •	• • •	• • •
CLK 55 AMG			040	189	197	357	359	541	590	723	747	762	775	960
	Paint	Code Color	Black	Black Opal ¹	Obsidian Black ¹	Cadet Blue ¹	Capri Blue ¹	Storm Red ^{1,2}	Mars Red	Pewter ¹	Granite Grey ^{1,2}	Diamond Silver ¹	Iridium Silver ¹	Alabaster White
CLK 55 AMG CABRIOLET	Soft top	■ Black ■ Blue	■	■	■	■ ■	■ ■	■	■	■	■	■	■	■
Upholstery and trim		Color (leather/nubuck)	•	•	•	• •	• •	•	•	•	•	•	•	•
	■ Standard Nappa leather with nubuck inserts, and dash, doors and carpeting in Black	Black/Black	•	•	•	• •	• •	•	•	•	•	•	•	•
		Black/Dark Blue	•	•	•	• •	• •	–	–	•	•	•	•	•
	– Includes AMG-design sand-cast aluminum trim	Black/Merlot Red	•	–	–	– –	– –	•	•	•	•	–	•	•
	□ Optional Burl Walnut wood trim		•	•	•	•	•	•	•	•	•	•	•	•

• AVAILABLE COMBINATION
– NOT AVAILABLE

1 Metallic paint, optional at extra cost on CLK 350 and CLK 500 models.
2 Delayed availability. See your dealer.

3 *designo* Silver Edition is optional on CLK 350 and CLK 500 models, and requires heated front seats or Comfort Package. Cabriolets include Black soft tops. Not available on CLK 55 AMG.

4 *designo* Graphite Edition is optional on all CLK-Class models, and requires heated front seats or Comfort Package on CLK 350 and CLK 500. Cabriolets include Black soft tops.

EXTERIOR PAINTWORK



040 **BLACK**



189 **BLACK OPAL**¹



197 **OBSIDIAN BLACK**¹



357 **CADET BLUE**¹



359 **CAPRI BLUE**¹



541 **STORM RED**¹,²



590 **MARS RED**



723 **PEWTER**¹



747 **GRANITE GREY**¹



762 **DIAMOND SILVER**¹



775 **IRIDIUM SILVER**¹



960 **ALABASTER WHITE**

CABRIOLET SOFT TOPS



BLACK



BLUE



ASH

INTERIOR UPHOLSTERY



BLACK premium leather
■ CLK 350 ■ CLK 500



STONE premium leather
■ CLK 350 □ CLK 500



ASH premium leather
■ CLK 350 □ CLK 500



BLACK/STONE premium leather
■ CLK 500



BLACK/ASH premium leather
■ CLK 500



■ **STANDARD**
□ **OPTIONAL**



BLACK leather/**BLACK** nubuck
AMG-design Nappa leather upholstery with nubuck inserts



BLACK leather/**DARK BLUE** nubuck
■ CLK 55 AMG



BLACK leather/**MERLOT RED** nubuck

INTERIOR TRIM



BURL WALNUT wood
■ CLK 350 □ CLK 500



BLACK ASH wood
■ CLK 500



AMG SAND-CAST aluminum
■ CLK 55 AMG

designo **SILVER EDITION**³



029 *designo* **SILVER** metallic paint



STONE Nappa leather



BROWN POPLAR wood

designo **GRAPHITE EDITION**⁴



041 *designo* **GRAPHITE** metallic paint



PORCELAIN Nappa leather



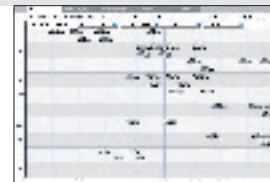
BLACK PIANO LACQUER wood

WE'RE
COMMITTED
TO KEEPING YOU
SATISFIED.



 <http://www.MBUSA.com>

Whether you need to locate the closest Mercedes-Benz dealer, want to know about financing and leasing options, or would like more information on our European Delivery Program, MBUSA.com puts the world of Mercedes as close as your computer. You can check out the latest models, peruse the extensive catalog of Mercedes-Benz accessories, sneak a peek at upcoming vehicles, or even set up your own portfolio. And exclusively for Mercedes-Benz drivers, Owners Online is your all-access pass to events, special promotions from prestigious retailers, and personalized offers from your Mercedes-Benz dealer. From your first exciting look at Mercedes through the years of satisfying ownership, MBUSA.com puts it all at your fingertips.



Model Selector

Find the Mercedes-Benz that's best for you based on performance, price and bodystyle.



Photos and Videos

Choose a Mercedes-Benz model and see it from every angle in photos, wallpapers, screen savers, 360° views, At A Glance features, In Motion footage and TV commercials.



Build Your Own

Customize your vehicle with options, colors and accessories, and save it for later viewing. You can even send the particulars to your local dealer, to help them set up a test drive for you.



Purchase Tools

Shopping for a new Mercedes has never been simpler. Schedule a test drive, order a brochure, learn more about a model, and explore financing and leasing options.



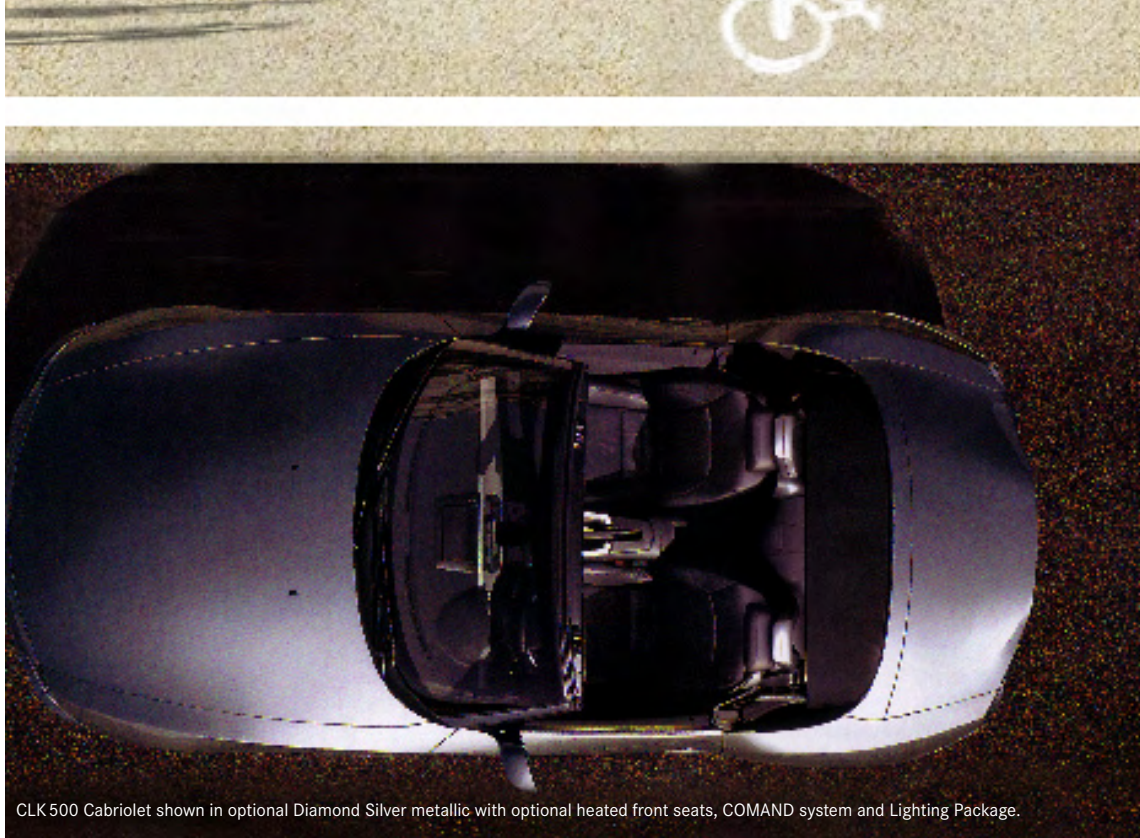
Locate a Dealer

Finding your nearest dealer—or any dealer—is easy with detailed maps and driving directions.



Owners Online

Owners Online is an exclusive online community that offers benefits that extend beyond your car. Through Owners Online, you can access your Mercedes-Benz Credit account and configure services for your in-car Tele Aid system. This information-rich site also provides vehicle care tips, answers to frequently asked questions, exclusive offers and promotions, and advance notice of what's exciting and new at Mercedes-Benz.



CLK500 Cabriolet shown in optional Diamond Silver metallic with optional heated front seats, COMAND system and Lighting Package.

The innovative spirit that drives us to create some of the world's finest vehicles is directly reflected in an impressive selection of owner benefits. Consider the Mercedes-Benz Roadside Assistance Program, the first of its kind and still the only one that doesn't expire. Our Mercedes-Benz Maintenance System lets you go farther than ever between scheduled oil changes. And our Customer Assistance Center is there for you 24 hours a day, every day. When we invented the first car in 1886, we also created the first car owner. For 120 years, it's been our passion to ensure that driving a Mercedes-Benz remains an experience that's second to none.

Mercedes-Benz Credit

Mercedes-Benz Credit makes financing your new Mercedes the start of a great experience, with an impressive array of flexible and convenient financing options. First Class Financing[®] provides qualified customers with comprehensive, tailor-made financing packages. The First Class Lease[®] gives you the flexibility of choosing from 13- to 60-month contracts and your preferred annual mileage allowance. And with an industry-leading lease-end process, the hardest thing you'll have to do is say goodbye to your old Mercedes as you get into your new one. MBCREDIT.com offers tools to help you decide whether purchasing or leasing is right for you, an online credit application, and the ability to view your account 24/7. To learn more about the benefits of leasing or financing through Mercedes-Benz Credit, see your Mercedes-Benz dealer or visit MBCREDIT.com.

24-hour Roadside Assistance for the life of the vehicle

The first of its kind, the Mercedes-Benz Roadside Assistance Program is still the only one that remains in effect for the entire life of the car. Our Roadside Assistance technicians can draw on years of experience and training to get you back on the road as quickly as possible.¹

Mercedes-Benz warranties

Our New Vehicle Limited Warranty runs 48 months or 50,000 miles, whichever comes first. And anytime during the new-vehicle warranty coverage, you can also purchase a Mercedes-Benz Extended Limited Warranty that will provide additional protection when the New Vehicle Limited Warranty expires.²

The Mercedes-Benz Maintenance System

We've made caring for your CLK-Class easier than ever. With the Mercedes-Benz Maintenance System, the service intervals are fixed and predictable—every 13,000 miles or one year (10,000 miles/1 year for AMG models).³ Your car will even remind you, about a month before service is due, via an automatic display on the dashboard that also tells you which type of maintenance service is due.

The no-charge Service Welcome

Getting proper care for your Mercedes is easiest when you go to the people who know your vehicle—and you—best: your Mercedes-Benz Center's Service Department. And to help you get acquainted, just bring your car in for a no-charge first visit between 1,000 and 3,000 miles, where your dealer will perform a diagnostic check and address any questions you might have. It's part of our no-charge Service Welcome, which also provides a check of your tires at no charge anytime before 6,500 miles.⁴

24-hour Customer Service

Our Customer Assistance Center is your one-stop source for answers. Whether you need to know how to use your audio system, find the nearest Mercedes-Benz dealer, get pricing, or learn about personal and automotive accessories, just call 1-800-FOR-MERCEDES or press the Tele Aid *i*-button in your car.⁵

Sign and Drive

Our legendary Roadside Assistance service includes bringing you some fuel if you've run out, replacing a flat tire with your spare, or jump-starting your car if the battery dies. All at no charge, and all for as long as you're driving a Mercedes-Benz—even somebody else's.⁶ Help is as close as your car's wrench button⁵ or just a call away at 1-800-FOR-MERCEDES.

Trip Interruption benefits

In the unlikely event that a breakdown covered by your MBUSA New Vehicle Limited Warranty occurs more than 100 miles from your home, leaves your Mercedes inoperable or unsafe to drive, and requires overnight repairs at a Mercedes-Benz Center, you'll be reimbursed up to \$300 per day for any documented expenses—for up to three days—for meals, lodging and substitute transportation.


Alternate Transportation

When you bring your vehicle into a Mercedes-Benz Center for servicing during the warranty period, ask about your dealer's Alternate Transportation Program—so you can maintain your busy schedule while your dealer maintains your car.⁷

¹ Roadside Assistance repairs may involve charges for parts, service and towing. Depending on the circumstances, these services may be provided by an outside service, courtesy of Mercedes-Benz Roadside Assistance. ² Please see your dealer for warranty details as well as for terms, conditions and pricing for extended limited warranty options. A surcharge applies if purchased after the first 12 months. ³ Whichever comes first. Requires use of 229.5-spec oil and high-performance fleece oil filter. Driver is responsible for monitoring fluid levels and tire pressures between service visits. See Maintenance Booklet for details. ⁴ Dealer will inspect tires and set inflation pressure. Follow tire manufacturer's recommendations. ⁵ First year's basic Tele Aid service provided at no additional cost with subscription. Subscription and acquaintance call required for service to be active. Service operates only where cellular and GPS coverage are available. ⁶ For full details of Sign and Drive services, as well as the Roadside Assistance Program, please see your dealer. ⁷ Certain restrictions may apply. Terms, conditions and dealer participation may vary.

© 2005 Mercedes-Benz USA, LLC
Marketing Communications

All illustrations and specifications contained in this brochure are based on the latest product information available at the time of publication. Mercedes-Benz reserves the right to make changes at any time, without notice, in colors, materials, equipment, specifications and models. Any variations in colors shown are due to reproduction variations of the printing process. Illustrations may include test situations. Some vehicles may be shown with non-U.S. equipment. Some vehicles are shown with optional equipment. HomeLink is a registered trademark of Prince, a Johnson Controls Company. harman/kardon and LOGIC7 are registered trademarks of Harman International Industries, Inc.

 In an effort to minimize the environmental impact of this brochure, Mercedes-Benz uses a recycled coated paper that is guaranteed in writing to contain a minimum of 10% post-consumer waste.

Printed in U.S.A. / 100

MC-05-707

Mercedes-Benz USA, LLC
One Mercedes Drive
Montvale, NJ 07645
1-800-FOR-MERCEDES
MBUSA.com

