

2011 E-Class  
Sedan and Wagon



Mercedes-Benz

# For drivers around the world, it's a reward. To other cars, it's a role model.

What drives us to create a car that inspires both drivers and other automakers? Since inventing the very first car, the defining character of Mercedes-Benz has come from continually reimagining the future and bringing it to life. For nine generations, the E-Class has set countless standards by which all cars are measured—from safety to style, from enduring value to uncompromising values. Every element of its engineering turns insight into expertise—to better manage an unpredictable world, and to heighten both your enthusiasm and your sense of well-being. Quite possibly the most technologically advanced automobiles ever, the 2011 E-Class Sedans and Wagons will reward you in ways you never dreamed a car could do. Driving your dreams is what drives us.



Introducing the 2011 E-Class Sedan and Wagon.  
For more information, please visit [www.mbusa.com/e-class](http://www.mbusa.com/e-class)



E 550 Sport Sedan shown on cover with optional Iridium Silver metallic paint and Premium 2 Package. E 350 4MATIC Sport Wagon shown on back cover with Arctic White paint and optional Rear Seat Entertainment system. E 350 Luxury Sedan shown at left with optional Palladium Silver metallic paint. E 350 4MATIC Luxury Wagon shown above with optional Indium Grey metallic paint.



E 350 Sport Sedan shown with optional Capri Blue metallic paint and Premium 2 Package. Please see endnotes at back of brochure.

# Innovation is nothing new to the E-Class.

**To become an icon, first be a benchmark.** For more than 60 years, one car has set—and raised—the bar for all cars. It's done this not just by excelling in one area, but by perpetually elevating virtually every dimension of driving, and orchestrating all of it with seamless elegance. Advanced, low-emission V-6 and V-8 engines—including a 50-state clean diesel—can stir your soul while soothing your conscience. AGILITY CONTROL and AIRMATIC suspensions master comfort and confidence at once, instantly adapting to every change in the road. And though the E-Class is engineered to conquer compromise, freedom of choice also prevails. Three sedans and a new wagon are each offered in Sport and Luxury models, so you can accentuate performance or refinement without diminishing the depth, or breadth, of either.



**Compelling.** E-Class engines balance assertive power with respect for the environment. Gasoline-powered 268-hp V-6 and 382-hp V-8 engines engage their alternator and power steering pump only as needed, reducing fuel use. A BlueTEC clean diesel V-6 generates massive torque yet emits fewer greenhouse gases than comparable gasoline engines.



**Conforming.** The 7-speed automatic transmission adapts to your driving style, or take charge with steering wheel-mounted paddle shifters. Suspensions are tuned for supple control on Luxury models, while Sport models emphasize crisper handling. Semi-active AIRMATIC suspension with Adaptive Damping is standard on all E550 models.



**Confident.** From winter weather to wet pavement and even dry cornering, 4MATIC all-wheel drive offers greater handling control on any road, in any season. Optional on gasoline-powered E-Class Sedans and standard on Wagons, the lightweight, efficient 4MATIC system automatically sends the engine's torque to the wheels with the best grip.<sup>1</sup>

# Changing the future is part of its history.

**An ongoing retrospective of foresight.** Look back over the life story of the automobile and you'll find Mercedes-Benz continually leading the way in safety innovation—from the invention of the first crumple zone 60 years ago to the exclusive PRE-SAFE® system of today that can detect and prepare for a collision before it happens. True to its heritage, the 2011 E-Class is engineered with visionary safety advances that watch the road ahead and to your side, and that help you to see and be seen. Maybe all cars will do this someday. The protection an E-Class offers today could rewrite the story of your own life.

---

**Body structure.** E-Class body structures utilize ultra-high-strength steel in critical areas to expertly manage both weight and impact forces. Wagons integrate an elaborate network of reinforcements to provide a generous crumple zone even with three rows of seating.

**Standard 11-way air bag protection.** No other car in its class offers air bags in more locations.<sup>2</sup> Pelvic air bags complement side-impact air bags for each front seat. A driver's knee air bag augments dual-stage front air bags. Side curtain air bags are provided at the outboard seating positions in both the first and second rows.

**Brighter lighting.** All-LED taillamps provide quicker illumination of the brake lamps than conventional bulbs. The optional Premium 2 Package adds Bi-Xenon headlamps with Active Curve Illumination, plus Adaptive Highbeam Assist, which continuously varies the headlamp range to maximize illumination without creating glare for other drivers. Bright white LED Daytime Running Lamps, standard on Sport models, are also included in the package on Luxury models.

**Night View Assist PLUS with Pedestrian Detection.** When driving in darkness, this innovative option projects infrared beams that are invisible to the human eye and reads them with a special camera. The system displays a clearer, supplemental real-time view of the road ahead on the large screen that's positioned high in the E-Class dashboard. It can even identify and point out pedestrians.<sup>3</sup>

**PRE-SAFE.** During certain vehicle maneuvers, the exclusive PRE-SAFE system can detect instability suggesting that a collision or rollover is imminent. PRE-SAFE can then tighten the front seat belts, adjust the front passenger seat, and close the windows and sunroof—all in an effort to better prepare the occupants.<sup>4</sup>

**DISTRONIC PLUS.** A Mercedes-Benz innovation that takes cruise control to new heights in convenience, this option adapts your set speed in response to traffic ahead, automatically slowing down until your path is clear again. DISTRONIC PLUS can even brake the car to a full halt if traffic stops, then resume automatically when it clears.<sup>5</sup>

**PRE-SAFE Brake.** Included with DISTRONIC PLUS, radar-based sensors can detect an impending collision with a vehicle ahead of the E-Class. PRE-SAFE Brake then automatically applies up to 100% of the car's braking force to help reduce the severity of impact.<sup>5</sup>

**ATTENTION ASSIST.** By continually monitoring numerous driving behaviors, this Mercedes-Benz innovation can audibly and visually alert the driver if it detects signs of drowsiness on long trips.<sup>6</sup>

**Active Lane Keeping Assist and Active Blind Spot Assist.** These optional systems can warn the driver of unintended drifting across visible lane markings<sup>6</sup> and, at speeds above 20 mph, alert the driver to some unseen vehicles in the next lane.<sup>7</sup> With new active technology for 2011, both systems can also help steer the car back into its own lane should the driver disregard the alerts.





E550 Sport Sedan shown with Arctic White paint and optional Panorama sunroof and PARKTRONIC. Please see endnotes at back of brochure.



E550 Sport Sedan shown with Almond/Black interior, Burl Walnut wood trim, and optional PARKTRONIC, Night View Assist PLUS and Premium 2 Package. Please see endnotes at back of brochure.





## Advanced technology feels instantly familiar.

**Forward thinking, thoughtfully engineered.** Of all the driving maneuvers you'll enjoy taking in an E-Class, its quick learning curve might prove even more satisfying. Its controls and features are designed to feel like a natural extension of your intuition. The COMAND system places audio, navigation and information such as real-time traffic reports within easy reach, with a convenient central controller and a high-resolution 7" in-dash display. Brilliantly detailed gauges read clearly through the multifunction steering wheel. Optional Parking Guidance can even help you size up a space electronically as you drive by. It's just another way everything seems clearer in an E-Class.

---

**Multifunction steering wheel.** Conveniently placed buttons let you adjust the audio system, use the Bluetooth® wireless interface,<sup>8</sup> and thumb through the various screens of the multifunction display inside the speedometer face, all without taking your hands off the Premium leather-wrapped steering wheel.

**harman/kardon audio.** An optional 12-speaker LOGIC7® system outputs 610 watts of Dolby® Digital 5.1 surround sound. Listening choices include HD Radio™ stations, SIRIUS® Satellite Radio,<sup>9</sup> iPod® integration,<sup>10</sup> 6GB Music Register for uploading MP3 files, 6-DVD/CD changer and memory card reader.

**Navigation with live traffic.** The optional navigation system<sup>11</sup> features a fast 40GB hard drive, Zagat® Survey ratings for restaurants, hotels and golf courses, and live SIRIUS Traffic™ updates.<sup>9</sup> Enhanced Voice Control lets you find addresses by speaking normally, with no need to spell out city names.

**Rear view camera and PARKTRONIC.** Two available systems help you negotiate tight spaces. A rear view camera<sup>12</sup> is part of the Premium 1 Package on Sedans, standard on Wagons. PARKTRONIC with Parking Guidance, optional on Sedans, helps you size up a parking space for fit, then guides you into it.

# Every surface reflects a deep tradition.

**Timeless style. Time well spent.** Modern design meets classic craftsmanship in the E-Class. Innovative luxuries transport you and your passengers in a spacious haven of endearing comfort and enduring quality. Shapely, supportive front seats power-adjust 14 ways, and recall up to three sets of stored settings. Intuitive controls and crisp instruments are rewarding to your eyes and hands, as are the rich materials and meticulous attention to detail. Finely tailored upholstery is double-stitched and fitted by hand. Wood trim is hand-finished, accented with polished chrome, and pleasing to your palette—with deep Black Ash wood available exclusively on Sport models, and warm Burl Walnut offered on both the Sport and Luxury editions. It takes time to craft the E-Class cabin. That's why you'll savor every minute here, too.



**Panorama sunroof.** Beyond the standard glass sunroof, a vast optional expanse of heat-reflecting glass provides first- and second-row passengers with a first-class view of the sky. The front section tilts for ventilation or slides back for a breeze. A power sliding screen helps filter out sunlight.



**Premium seating.** An optional Drive-Dynamic multicontour driver seat provides adjustable lumbar, thigh and shoulder supports, plus active cornering support and massage. Heated front seats are standard on the E550 and an E350 option, while Active Ventilated front seats are optional on all models.<sup>13</sup>



**Perimeter lighting.** A network of efficient LEDs and fiber optics casts a gentle glow from beneath the dash and door trim of every E-Class Sedan and Wagon. Along with illuminated door handles and footwells, the ambient lighting helps make nighttime driving feel more secure.



E 550 Luxury Sedan shown with Almond/Mocha interior and Burl Walnut wood trim.



E 350 4MATIC Luxury Wagon shown with Almond/Mocha interior, Burl Walnut wood trim, and optional leather upholstery and Rear Seat Entertainment system. Please see endnotes at back of brochure.

# Good ideas have a way of growing.

**Introducing the only wagon that's 100% E-Class. And more.** With all of the industry-leading performance, safety systems and luxury that are engineered into the E-Class, it's hard to imagine how to expand on it. The new E 350 4MATIC Wagon—in your choice of Sport or Luxury trim—shows just how versatile good thinking can be. With a 268-hp V-6, 7-speed automatic and standard all-wheel drive, it delivers the driving excitement, security and style you expect from an E-Class, along with flexible accommodations for up to seven people or 57.4 cubic feet of cargo. Self-leveling AIRMATIC rear suspension helps maintain crisp handling and a composed ride as passenger and cargo loading changes. You can put a lot into the new E-Class Wagon. But what's already in there is what makes it a Mercedes-Benz.



**Flexible seating.** Room for up to seven is standard, with a rear-facing third-row seat that accommodates two children or folds flush with the cargo floor in seconds. Dual pop-out cupholders, twin head restraints and 3-point seat belts are included. The 60/40-split second-row seat folds down via levers conveniently located near the liftgate, with no need to remove the head restraints or flip up the seat cushions.



**Versatile packing.** The standard power liftgate can be fully opened via the SmartKey remote control, to help make loading easier when it's raining or if your arms are full of packages. The cargo cover automatically rises when the liftgate is opened, and includes a vertical partition net that can divide the cabin behind the second row, or behind the front seats when all the rear seats are folded down.



**Easy maneuvering.** To enhance your rearward vision, a variety of standard features engage automatically when you shift into Reverse. A rear view camera displays a live view of the area behind the car on the in-dash COMAND screen.<sup>12</sup> The right-side mirror can be set to tilt down for a better view of the curb. And if the front wipers are on, the rear-window wiper cycles once to help clear your view.



The E 63 AMG.

## Every masterpiece has a signature.

**One man, one engine.** Beyond all the racing trophies earned in the storied legacy of AMG—the high-performance arm of Mercedes-Benz—one small plaque tells an even greater story. Affixed atop each AMG engine, it bears the signature of the single master technician who assembled it from race-proven components with his own hands. The superlatively engineered automobile which houses this engine will go forth to achieve imposing results in virtually every dimension of performance. But no matter what numbers it generates—horsepower and pound-feet, mph and rpm, or seconds and g's—every measure of an E 63 AMG starts with “one.”

---

**AMG-developed 6.3-liter V-8.** With a patented dual-length intake featuring two internal throttle flaps, the handcrafted V-8 of the E 63 AMG outputs a prodigious 518 hp @ 6,800 rpm and 465 lb-ft of torque @ 5,200 rpm. Accompanied by the throaty growl of an AMG sport exhaust system, 60 mph arrives in just 4.3 seconds.<sup>14</sup>

**SPEEDSHIFT MCT.** The 7-speed SPEEDSHIFT MCT automatic transmission offers four driving modes: Controlled Efficiency, Sport, Sport+, and a paddle-shifted Manual mode with lightning-quick 100-millisecond shifts. A wet startup clutch eliminates the power losses of a traditional torque converter. And a Race Start function optimizes traction and startup revs for maximum launch control and acceleration, with automatic or manual shifting.

**AMG-enhanced chassis.** The AMG RIDE CONTROL suspension features AMG-specific steel front springs and rear air springs, plus electronically controlled damping with three selectable modes. Along with a 22% faster steering ratio, the front axle features a 2.2" wider track and substantially recalibrated geometry for more tenacious cornering grip. Massive perforated brake discs are grasped by 6-piston front and 4-piston rear calipers. Lightweight, highly rigid 18" AMG 5-spoke wheels wear staggered-width tires.<sup>15</sup>

**Race-bred refinement.** The AMG DRIVE UNIT lets the driver control the transmission, suspension, driving modes and 3-stage ESP<sup>®</sup> with one-touch logic. Controls on the AMG steering wheel offer three instrumentation modes: Warmup (oil and coolant temperature), Setup (driving modes), and a RACETIMER for timing track laps. And yet the exquisitely composed and lavishly crafted E 63 AMG is a performance car you can enjoy every day.

Learn more at [www.mbusa.com/amg](http://www.mbusa.com/amg)





E 63 AMG Sedan shown with Iridium Silver metallic paint, and optional 19" wheels, Panorama sunroof, and AMG Exterior Carbon Fiber, Driver Assistance and Premium 2 Packages. Please see endnotes at back of brochure.



**mbrace**  
Your World, From Your Car

## Connecting your life.

**Stay in touch with mbrace.** Your vehicle is more than a source of enjoyment, it's a vital part of everyday living. The Mercedes-Benz mbrace™ system can make it easier—from planning a trip, to remembering where you parked, to handling an unexpected emergency.<sup>16</sup> You can access a world of security, convenience and destination planning services from your vehicle, your computer or even your smartphone. With advanced, reliable technology, plus 24-hour support from helpful experts, mbrace helps keep you, your life and your Mercedes-Benz connected.



**From your vehicle.** Three buttons inside your Mercedes-Benz can connect you to emergency services, our 24-hour Customer Assistance Center, or our Roadside Assistance service.<sup>17</sup> Numerous mbrace services are also integrated with your vehicle's optional COMAND navigation system.



**From your smartphone.** The mbrace Mobile Application for your iPhone® or BlackBerry® lets you locate your vehicle from up to a mile away, remote-lock or unlock its doors, and contact Roadside Assistance, Customer Service or even Mercedes-Benz Financial with a touch.<sup>18</sup>



**From your computer.** Beyond the support you'll find at [mbrace.mbusa.com](http://mbrace.mbusa.com), the Search & Send feature lets you look up destinations on Google™ Maps using any web browser. You can then send the address directly to your vehicle's navigation system with just a few clicks.



# Mercedes-Benz mbrace™ packages.

**Support—when and where you need it.** Two service packages are available, each including an attractive complimentary trial period allowing you to experience the many ways that Mercedes-Benz mbrace can help connect and protect you and your vehicle. The standard **mbrace Package (::)** includes all of the Safety and Security services, as well as Search & Send,<sup>™</sup> one of the most popular Navigation and Destination Planning features. It also includes five reassuring Convenience features, such as the ability to locate your vehicle using your smartphone. The **mbrace PLUS Package (+)** offers unlimited use of our expert Concierge services, spoken turn-by-turn Route Assistance—even if your car does not have a navigation system—plus traffic and weather reports based on your location.



## Safety and Security



### Automatic Collision Notification :: +

With mbrace, your vehicle can call for help even if you can't. If an air bag or Emergency Tensioning Device is activated, mbrace initiates a call to the Mercedes-Benz Emergency Response Center to notify them of the incident, and provide information on your vehicle and its location. A Customer Specialist will then attempt to make voice contact with you. If you request help, or do not respond, they will notify local emergency response services, and stay on the line until help arrives.



### SOS/Emergency Call :: +



### Roadside Assistance Connection :: +



### Stolen Vehicle Location Assistance :: +



### Automatic Alarm Notification :: +



### Crisis Assist :: +



### Safe Ride :: +



## Navigation and Destination Planning



### Search & Send :: +

A convenient way to plan your trips before you leave your home or office, Search & Send lets you use Google Maps to find a destination online, then send it directly to your Mercedes-Benz. Once you're in your vehicle, just push the *i*-Button and the address will be downloaded into your vehicle's navigation system. You can then start route guidance immediately, or save the information in your navigation system's memory.



### Point of Interest Destination Download +



### Route Assistance +



### Location-Based Traffic +



### Location-Based Weather +



## Convenience



### Mercedes-Benz Concierge +

Subscribing to mbrace PLUS gives you unlimited access to Mercedes-Benz Concierge services, a network of experienced, professional personal assistants who can fulfill virtually any request, around the clock, right in your vehicle.



### Remote Door Lock :: +



### Remote Door Unlock :: +



### Vehicle Finder (via Mobile Application only) :: +



### Dealer Connect :: +



### Vehicle Information :: +

:: mbrace Package features  
+ mbrace PLUS Package features

Mercedes-Benz mbrace is the evolution of our existing groundbreaking in-vehicle services, offering national support along with expanded and enhanced features. To learn more about mbrace, see your dealer, call 866-990-9007 or visit [www.mbusa.com/mbrace](http://www.mbusa.com/mbrace).



E 350 4MATIC Sport Sedan shown with optional Iridium Silver metallic paint and PARKTRONIC. E 350 4MATIC Sport Wagon shown with optional Palladium Silver metallic paint. Please see endnotes at back of brochure.

# A personal expression can make a lasting impression.

**No automaker has more experience in creating a great experience.** With a history of firsts that started with the invention of the car in 1886, every Mercedes-Benz embodies a unique biography of automotive achievement. And yet the most compelling memoir will be the one you create for yourself. To help you craft the character of your E-Class to fit your own, an array of thoughtfully innovative options and accessories is available. Mercedes-Benz also offers you the opportunity to take your first drive in your new E-Class in its natural German habitat, then ship it home. Wherever you choose to go with your new E-Class, this is the start of a memorable journey.



**Options and packages.** Make your E-Class Sedan or Wagon your own with the optional equipment that suits you best. The Rear Seat Entertainment system offers first-class entertainment to your second-row passengers, with dual input sources and two sets of wireless headphones.

Turn the page for more options and packages.



**Accessories.** Fine-tune your car's aerodynamics, attitude and appearance with Genuine Mercedes-Benz Accessories that are exclusively engineered for your E-Class. From wheels to all-season floor mats to rooftop bike, ski and snowboard racks, they fit your lifestyle as well as they fit your car.

Visit [www.mbusa.com/e-class](http://www.mbusa.com/e-class)



**European Delivery.** Pick up your new Mercedes-Benz in Germany through the original manufacturer-sponsored tourist delivery program. You'll enjoy significant savings<sup>19</sup> and other benefits, as well as the unforgettable experience of a European vacation with your own E-Class.

Visit [www.mbusa.com/edp](http://www.mbusa.com/edp)

# Build your own E-Class at [www.mbusa.com/e-class](http://www.mbusa.com/e-class)

	E 350	E 350 BlueTEC	E 550
<b>OPTION PACKAGES</b>			
<b>Premium 1 Package:</b>	<input type="radio"/>	<input type="radio"/>	<input type="radio"/>
<ul style="list-style-type: none"> <li>• Hard-drive navigation,<sup>11</sup> 6GB Music Register for upload of MP3 files</li> <li>• harman/kardon LOGIC7<sup>®</sup> surround-sound system with Dolby Digital 5.1</li> <li>• SIRIUS<sup>®</sup> Satellite Radio<sup>4</sup> with SIRIUS Traffic,<sup>™</sup> iPod<sup>®</sup>/MP3 media interface,<sup>10</sup> HD Radio<sup>™</sup> receiver, and Gracenote<sup>®</sup> media database</li> <li>• Enhanced Voice Control for audio, telephone and navigation</li> <li>• Heated front seats (heated and Active Ventilated on E 550 models)</li> <li>• Power rear window sunshade (Sedans)</li> <li>• Manual rear-side window sunshades (Wagons)</li> <li>• Rear view camera (standard on Wagons)<sup>12</sup></li> </ul>			
<b>Premium 2 Package</b> (includes all items in Premium 1 Package, plus):	<input type="radio"/>	<input type="radio"/>	<input type="radio"/>
<ul style="list-style-type: none"> <li>• Bi-Xenon headlamps with Active Curve Illumination, Adaptive Highbeam Assist, headlamp washing system and corner-illuminating front lamps</li> <li>• LED Daytime Running Lamps (standard on Sport models)</li> <li>• KEYLESS-GO</li> <li>• Electronic trunk closer (Sedans only; power liftgate standard on Wagons)</li> <li>• 115-volt AC power outlet in center console</li> </ul>			
<b>Wheel Package</b> (Sport models only; not available on Luxury models):	<input type="radio"/>	<input type="radio"/>	<input checked="" type="radio"/>
<ul style="list-style-type: none"> <li>• 18" AMG twin 5-spoke wheels with all-season tires<sup>14</sup></li> <li>• 3-spoke sport steering wheel (excluded with Driver Assistance Package)</li> </ul>			
<b>Driver Assistance Package:</b>	<input type="radio"/>	<input type="radio"/>	<input type="radio"/>
<ul style="list-style-type: none"> <li>• DISTRONIC PLUS with PRE-SAFE<sup>®</sup> Brake<sup>5</sup></li> <li>• Active Blind Spot Assist<sup>7</sup></li> <li>• Active Lane Keeping Assist<sup>6</sup></li> </ul>			
<b>INDIVIDUAL OPTIONS</b>			
Metallic paint	<input type="radio"/>	<input type="radio"/>	<input type="radio"/>
4MATIC <sup>™</sup> all-wheel drive (standard on Wagons)	<input type="radio"/>	<input type="radio"/>	<input type="radio"/>
Panorama sunroof	<input type="radio"/>	<input type="radio"/>	<input type="radio"/>
PARKTRONIC with Parking Guidance (not available on Wagons)	<input type="radio"/>	<input type="radio"/>	<input type="radio"/>
Night View Assist PLUS with Pedestrian Detection <sup>3</sup>	<input type="radio"/>	<input type="radio"/>	<input type="radio"/>
Wood/leather steering wheel (not available on Sport models)	<input type="radio"/>	<input type="radio"/>	<input type="radio"/>
Leather upholstery	<input type="radio"/>	<input type="radio"/>	<input checked="" type="radio"/>
Heated and Active Ventilated front seats (requires Premium 1 or Premium 2 Package plus leather upholstery; included in Premium 1 Package on E 550)	<input type="radio"/>	<input type="radio"/>	<input type="radio"/>
Drive-Dynamic multicontour driver seat with massage feature	<input type="radio"/>	<input type="radio"/>	<input type="radio"/>
Split-folding rear seats (standard on Wagons)	<input type="radio"/>	<input type="radio"/>	<input type="radio"/>
Rear Seat Entertainment system	<input type="radio"/>	<input type="radio"/>	<input type="radio"/>
Rear side-impact air bags	<input type="radio"/>	<input type="radio"/>	<input type="radio"/>
<input checked="" type="radio"/> Standard <input type="radio"/> Optional <input type="radio"/> Not Available			

	E 350 Sedan	E 350 BlueTEC Sedan	E 350 4MATIC Wagon	E 550 Sedan
<b>SPECIFICATIONS</b>				
<b>Engine</b>	3.5-liter gasoline V-6, 268 hp @ 6,000 rpm, 258 lb-ft net torque @ 2,400–5,000 rpm	3.0-liter diesel V-6, 210 hp @ 3,800 rpm, 400 lb-ft net torque @ 1,600–2,400 rpm	3.5-liter gasoline V-6, 268 hp @ 6,000 rpm, 258 lb-ft net torque @ 2,400–5,000 rpm	5.5-liter gasoline V-8, 382 hp @ 6,000 rpm, 391 lb-ft net torque @ 2,800–4,800 rpm
<b>Transmission</b>	7-speed automatic with steering wheel-mounted paddle shifters			
<b>Wheels, Sport/Luxury</b>	18" 5-spoke/17" split 5-spoke	17" split 5-spoke/17" split 5-spoke	17" split 5-spoke/17" split 5-spoke	18" AMG twin 5-spoke <sup>14</sup> /17" split 5-spoke
<b>Suspension</b>	Sport models: sport-tuned with AGILITY CONTROL Luxury models: comfort-tuned with AGILITY CONTROL (Wagons also include self-leveling AIRMATIC rear suspension)			Sport and Luxury models: AIRMATIC with Adaptive Damping
<b>Drivetrain</b>	Rear-wheel drive or 4MATIC all-wheel drive	Rear-wheel drive	4MATIC all-wheel drive	Rear-wheel drive or 4MATIC all-wheel drive

	E-Class Sedans	E 350 4MATIC Wagon
<b>DIMENSIONS</b>		
<b>Wheelbase</b>	113.2 in	113.2 in
<b>Overall length</b>	191.7 in	192.7 in
<b>Overall height</b>	57.9 in	58.9 in (with roof rails)
<b>Overall width</b>	81.5 in (with mirrors)	81.5 in (with mirrors)
<b>Curb weight</b>	3,825 lbs (E 350), 4,059 lbs (E 350 BlueTEC), 4,034 lbs (E 550)	4,213 lbs
<b>Headroom</b>	37.9 in, front/38.2 in, rear	38.3 in, front/39.8 in, 2nd row
<b>Legroom</b>	41.3 in, front/35.8 in, rear	41.3 in, front/36.0 in, 2nd row
<b>Shoulder room</b>	57.8 in, front/56.9 in, rear	57.8 in, front/56.8 in, 2nd row
<b>Cargo capacity</b>	15.9 cu ft	20.5 cu ft (behind 2nd row, to top of seats) 57.4 cu ft (2nd and 3rd rows folded, floor-to-ceiling)

## ENDNOTES

- 1 No system, regardless of how advanced, can overcome the laws of physics or correct careless driving. Please always wear your seat belt. Performance is limited by available traction, which snow, ice and other conditions can affect. Always drive carefully, consistent with conditions. Best performance in snow is obtained with winter tires.
- 2 WARNING: THE FORCES OF A DEPLOYING AIR BAG CAN CAUSE SERIOUS OR FATAL INJURIES TO A CHILD UNDER AGE 13. THE SAFEST SEATING POSITION FOR YOUR CHILD IS IN THE REAR SEAT, BELTED INTO AN APPROPRIATE, PROPERLY INSTALLED CHILD SEAT, OR CORRECTLY WEARING A SEAT BELT IF TOO LARGE FOR A CHILD SEAT. SEE OPERATOR'S MANUAL FOR ADDITIONAL WARNINGS AND INFORMATION ON AIR BAGS, SEAT BELTS AND CHILD SEATS.
- 3 Night View Assist PLUS does not replace the use of headlamps and should not be used as the primary visual source for the driver.
- 4 PRE-SAFE<sup>™</sup> closes the side windows and sunroof when the system's sensors detect side movement that suggests a possible rollover.

# Color and Trim

## PAINTWORK, METALLIC



Obsidian Black



Steel Grey



Indium Grey



Palladium Silver



Iridium Silver



Diamond White<sup>20</sup>

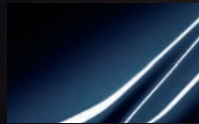


Pearl Beige

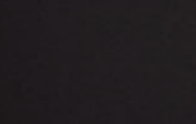


Quartz Blue

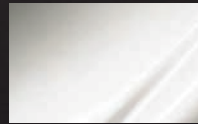
## PAINTWORK, NON-METALLIC



Capri Blue



Black

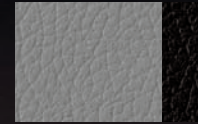


Arctic White

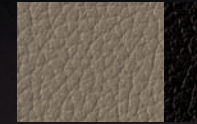
## UPHOLSTERY, SPORT MODELS<sup>21</sup>



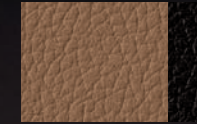
Black



Ash/Black



Almond/Black<sup>21</sup>

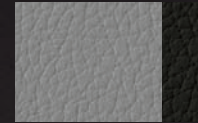


Natural Beige/Black

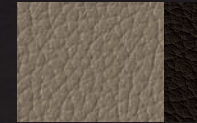
## UPHOLSTERY, LUXURY MODELS<sup>21</sup>



Black



Ash/Dark Grey



Almond/Mocha

## HIGH-GLOSS WOOD TRIM<sup>22</sup>



Black Ash



Burl Walnut

## CUSTOM OPTIONS



- 5 DISTRONIC PLUS adaptive cruise control is no substitute for active driving involvement. It does not react to stationary objects, nor recognize or predict the curvature and lane layout of the road or the movement of vehicles ahead. It is the driver's responsibility at all times to be attentive to traffic and road conditions, and to provide the steering, braking and other driving inputs necessary to retain control of the vehicle. Drivers are cautioned not to wait for the DISTRONIC Proximity Warning System before braking, as that may not afford sufficient time and distance to brake safely. After braking the car for stopped traffic ahead, system resumes automatically only if traffic pauses for less than 3 seconds.
- 6 Driving while drowsy or distracted is dangerous and should be avoided. ATTENTION ASSIST and/or Active Lane Keeping Assist may be insufficient to alert a fatigued or distracted driver of lane drift and cannot be relied on to avoid an accident or serious injury.
- 7 Active Blind Spot Assist may not be sufficient to avoid all accidents involving vehicles in your blind spot and does not estimate the speed of oncoming vehicles. It should not be used as a sole substitute for driver awareness and checking of surrounding traffic conditions.
- 8 Bluetooth® interface does not provide phone charging or external antenna. Voice interactivity feature is dependent on selected handset. Visit [www.mbusa-mobile.com](http://www.mbusa-mobile.com) for details. Phone sold separately. See dealer for a list of approved compatible phones.
- 9 SIRIUS® hardware and subscription required. With the purchase of a new, SIRIUS-enabled vehicle, you'll receive a complimentary 6-month subscription to SIRIUS, courtesy of Mercedes-Benz. Subscription governed by SIRIUS Terms & Conditions available at [sirius.com](http://sirius.com). SIRIUS U.S. Satellite Service available only to those at least 18 years of age in the 48 contiguous United States, DC and Puerto Rico (with coverage limitations). Service available in Canada; see [www.siriuscanada.ca](http://www.siriuscanada.ca).
- 10 All iPod® devices are sold separately. Feature not compatible with iPod Shuffle. See dealer for details.
- 11 While the navigation system provides directional assistance, the driver must remain focused on safe driving behavior, including paying attention to traffic and street signs. The driver should utilize the system's audio cues while driving and should only consult the map or visual displays once the vehicle has been stopped in a safe place. Maps do not cover all areas or all routes within an area.
- 12 Rear view camera does not audibly notify driver of objects outside the system's field of vision, which includes nearby objects, and is not a substitute for actively checking around the vehicle for any obstacles.
- 13 Delayed availability. See your dealer.

- 14 Stated rates of acceleration are based upon manufacturer's track results and may vary depending on model, environmental and road surface conditions, driving style, elevation and vehicle load.
- 15 Lower aspect ratio tires and accompanying wheels provide substantially increased treadwear, increased tire noise and reduced ride comfort. Serious wheel and tire damage may occur if the vehicle is operated on rough or damaged road surfaces or upon encountering road debris or obstacles. These tires are not designed for use on snow and ice. Winter tires mounted on appropriately sized and approved wheels are recommended for driving in those conditions.
- 16 All Mercedes-Benz mbrace™ services operate only where cellular and Global Positioning Satellite signals are available, which are provided by third parties and not within the control of Mercedes-Benz USA, LLC. An mbrace Package trial period is offered on new, Certified Pre-Owned and pre-owned sales and leases at an authorized Mercedes-Benz dealer. Subscriber Agreement is required for service to be active. Some services are only available on select vehicles. Your PIN is required in order to use certain services. See your dealer or [www.mbusa.com/mbrace](http://www.mbusa.com/mbrace) for details, including a list of compatible smartphones.
- 17 Roadside Assistance repairs may involve charges for parts, service and towing. Vehicle must be accessible from main roads. Depending on the circumstance, these services may be provided by an outside provider, courtesy of Mercedes-Benz Roadside Assistance. Restricted roadways, acts of nature and vehicle accessibility may limit our ability to provide services to you. For full details of Sign and Drive services, as well as the Roadside Assistance Program, please see your dealer.
- 18 mbrace is compatible with select Apple iPhone® models running OS 2.2.1 or later, BlackBerry® Curve™ 8300 Series models with GPS, and Blackberry 8820 and 8830 models running OS 4.5 or later. Please visit [www.mbusa.com/mbrace](http://www.mbusa.com/mbrace) for more information.
- 19 European Delivery Program discount of 7% available on select models, other models offered at MSRP. See dealer for details.
- 20 Extra-cost option. Delayed availability. See your dealer.
- 21 MB-Tex upholstery standard on E 350 and E 350 BlueTEC models. Leather upholstery standard E 550 Sedans, optional at extra cost on E 350 and E 350 BlueTEC models.
- 22 Black Ash wood trim is standard on Sport models, except with Almond/Black interior. Burl Walnut wood trim is standard on Sport models with Almond/Black interior and all Luxury models, and available on any Sport model at no additional charge.
- 23 Durability is based on longevity, as determined by MBUSA sales records 1952–2008 and R.L. Polk & Co. Vehicles In Operation as of 2008.



For a small blue planet

For 125 years – longer than any other automaker – we've been sharing this planet with you. Respecting it, and protecting it, have long been a part of our vision and ambition. We introduced the world's first CFC-free car, not just in its air conditioning but in its entire manufacturing process. We've been using water-borne paints for years, and source the wood for our interior trim from responsibly sustained forests. We've been pioneering advanced powertrains for generations, from today's hybrid models and 50-state clean diesels to the fuel cell vehicles of tomorrow. Mercedes-Benz is also legendary for producing automobiles of extraordinary durability, with 88% of the vehicles sold in the last 20 years – and a remarkable 75% of the vehicles we've ever sold in the U.S. – still on the road.<sup>23</sup> After all, it takes virtually the same amount of energy to build vehicles that last as ones that won't. Even our brochures conserve resources and are produced with eco-conscious printing. Everything we engineer is born from the motivation and ingenuity to make things better. Passion with compassion – that is what drives us.



Product group from well-managed forests, controlled sources and recycled wood or fiber  
www.fsc.org Cert no. SW-COC-001795  
© 1996 Forest Stewardship Council



©2010 Mercedes-Benz USA, LLC • One Mercedes Drive, Montvale, NJ 07645 • 1-800-FOR-MERCEDES • www.mbusa.com  
Marketing Communications. All illustrations and specifications contained in this brochure are based on the latest product information available at the time of publication. Mercedes-Benz reserves the right to make changes at any time, without notice, to colors, materials, equipment, specifications and models. Any variations in colors shown are due to reproduction variations of the printing process. Illustrations may include test situations. Some vehicles may be shown with non-U.S. equipment. Some vehicles are shown with optional equipment. iPhone and iPod are registered trademarks of Apple Inc. Bluetooth is a registered trademark of Bluetooth SIG, Inc. Google Maps is a registered trademark of Google Inc. harman/kardon and LOGIC7 are registered trademarks of Harman International Industries, Inc. HD Radio is a proprietary trademark of iBiquity Digital Corporation. BlackBerry is a registered trademark of Research In Motion Limited. SIRIUS, XM and all related marks and logos are trademarks of SIRIUS XM Radio Inc. and its subsidiaries. All rights reserved.