



2011 ALTIMA

10 REASONS TO MAKE AN ALTIMA® YOUR OWN.

Over **5,000** quality and durability tests.

Available **9.3 GB Music Box®** for digital music storage and playback.

Powerful, yet efficient **4-cylinder or V6 engine.**

Available **touch-screen navigation** with **XM NavTraffic®** and **XM NavWeather™** updates.^{1,2}

Available **iPod®-friendly USB input.**^{3,4}

Available **RearView Monitor** helps you see what's directly behind you.⁵

Push Button Ignition and available **Nissan Intelligent Key.®**

Available **Bluetooth® Hands-free Phone System.®**

Standard **Vehicle Dynamic Control (VDC)** and **Traction Control System (TCS).⁷**

6 standard air bags to help keep you and yours safe.⁸

visit www.NissanUSA.com/altima

¹Never program while driving. GPS mapping may not be detailed in all areas or reflect current road regulations. ²Required XM Radio, XM NavTraffic and XM NavWeather monthly subscriptions sold separately. Subscriptions governed by XM Customer Agreement available at xmradio.com. XM NavTraffic only available in select markets. For more information, see www.xmradio.com/navweather.com. ³Driving is serious business and requires your full attention. Do not operate any devices connected to the USB or auxiliary audio input jack while driving. ⁴Always give your full attention to driving. Avoid operating your iPod® in such a way that you can be distracted during vehicle operation. See dealer for details. iPod is a registered trademark of Apple, Inc. All rights reserved. iPod not included. ⁵Parking aid/convenience feature. Cannot completely eliminate blind spots or warn of moving objects. May not detect every object. Always check surroundings before moving vehicle. Not a substitute for proper backing procedures. Always turn to check what is behind you before backing up. ⁶Availability of specific features is dependent upon the phone's Bluetooth® support. Please refer to your phone Owner's Manual for details. Cell phone not included. The Bluetooth word mark and logos are owned by Bluetooth SIG, Inc., and any use of such marks by Nissan is under license. ⁷VDC, which should remain on when driving except when freeing the vehicle from mud or snow, cannot prevent accidents due to abrupt steering, carelessness, or dangerous driving techniques. Always drive safely. ⁸Air bags are only a supplemental restraint system; always wear your seat belt. Even with the occupant-classification sensor, rear-facing child restraints should not be placed in the front-passenger's seat. Also, all children 12 and under should ride in the rear seat properly secured in child restraints, booster seats, or seat belts according to their size. Air bags will only inflate in certain accidents. See your Owner's Manual for more details.

PRINTED IN BELGIUM.



SHIFT the way you move





INNOVATION THAT LASTS
TIMES TWO.

Go ahead, choose sedan or coupe. You'll get thrilling performance and exceptional quality with both. Start your engine with a push of a button. Then make a quick getaway with the outstanding response and smoothness of a virtually gearless CVT transmission or a sporty 6-speed manual. A fuel-efficient 4-cylinder or potent V6 make getting to your destination a blast. This isn't just innovation. This is innovation that lasts.

MY GIFT
TO THE CARPOOL.



Nissan Altima 2.5 S Sedan shown in Winter Frost with optional equipment.



Nissan Altima 3.5 SR Sedan shown in Charcoal Leather with optional equipment.

ONE MORE LOOK
AND I'LL CALL IT A NIGHT.



Nissan Altima 3.5 SR Sedan shown in Brilliant Silver with optional equipment.

The image shows the front interior of a car, featuring two leather seats with a quilted pattern. The dashboard, steering wheel, and center console are visible, all in a light beige or cream color. The car is parked on a paved surface, and the view is from the passenger side looking towards the driver's seat.

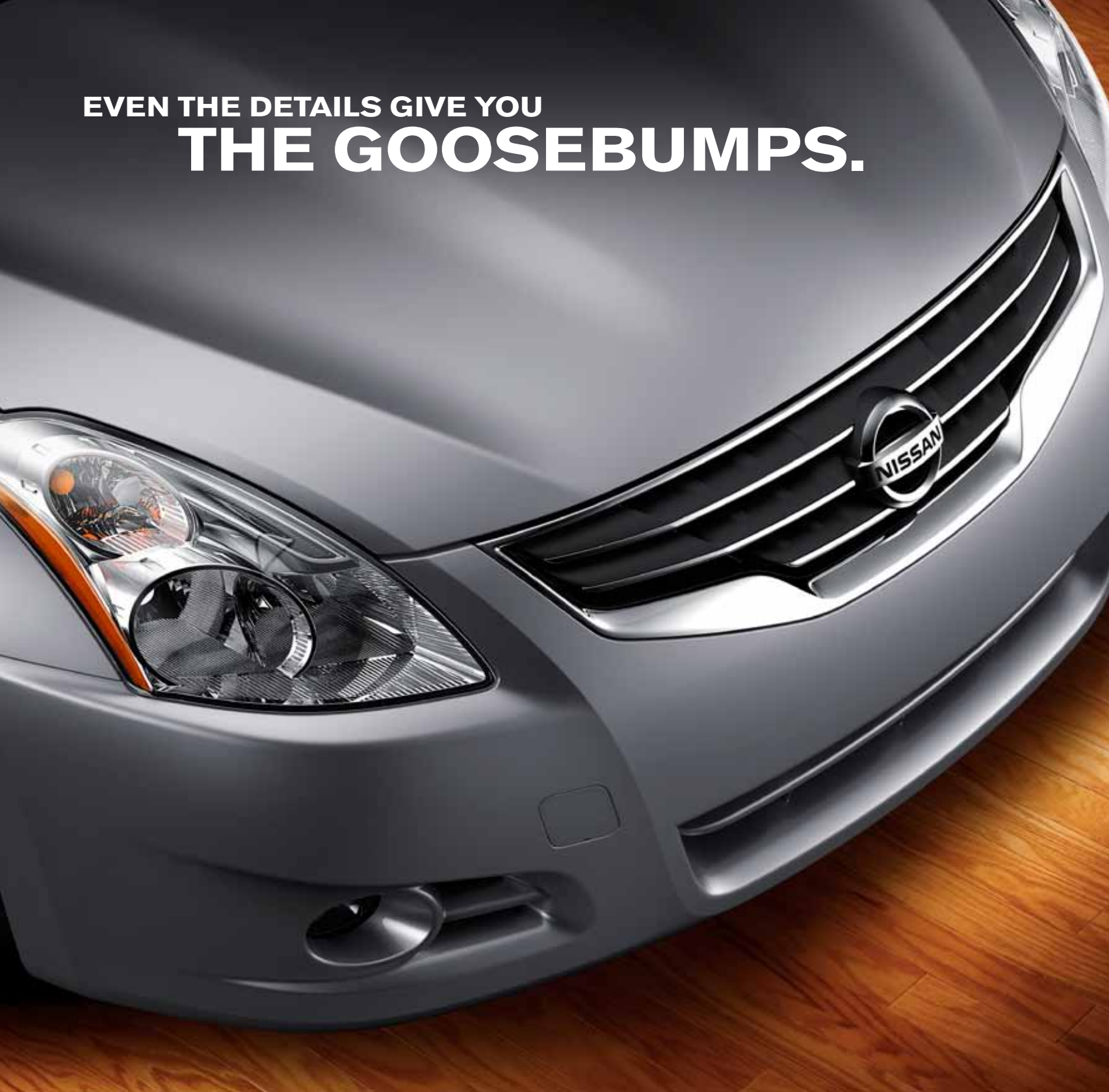
SO MUCH TO SHARE

GOING SOLO FEELS ALMOST SELFISH.

True, it's very spacious, but before you invite your friends in, take a moment to admire your Altima's refined interior. Available heated front seats make it hard to leave, while unexpected touches, like stitched leather, wood-tone details or patterned metallic accents, are options that beg you to stay. And with stylish details all around, going solo won't happen often.

Nissan Altima 3.5 SR Sedan shown in Blond Leather with optional equipment.

EVEN THE DETAILS GIVE YOU
THE GOOSEBUMPS.



THIS IS WHERE YOU
FALL IN LOVE
WITH DRIVING AGAIN.

Looking for a true coupe? This is it. A lower roofline and agile shorter wheelbase deliver sleek styling and solid performance. Even the ride height has been reduced to give you exceptional handling through every turn.



Nissan Altima 3.5 SR Coupe shown in Red Alert with optional equipment.



Nissan Altima 3.5 SR Coupe shown in Winter Frost with optional equipment.



**CALL IT YOUR SPOT
IN THE UNIVERSE.**

From perfectly placed controls to sculpted lines, your Altima Coupe's interior is all about style with purpose. Unique to coupe, red sport bucket front seats with large bolsters give you lateral support in curves, while a special pouch in the lower seat cushion lets you stash important items out of sight.

Nissan Altima 3.5 SR Coupe shown in Red Leather with optional equipment.



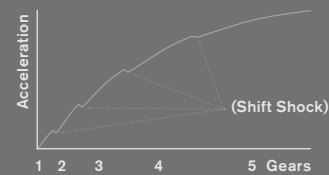
**WE LOOK AT THINGS
DIFFERENTLY.**

NOW YOU CAN TOO.

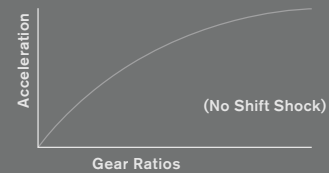
The next few pages will help fill you in on what it's like to have an Altima Sedan or Coupe in your life. From an available 270-hp V6 that is sure to spice up your daily commute to an advanced navigation system that not only gets you to your destination with ease, but recommends places to eat along the way.¹ As you get to know Nissan Altima a little better, we hope you find what you're looking for – plus a few surprises.

¹Never program while driving. GPS mapping may not be detailed in all areas or reflect current road regulations.

Conventional Automatic Transmission



Continuously Variable Transmission



A smarter way to shift. The virtually “gearless” intelligent CVT (Continuously Variable Transmission) that makes shift shock and gear hunting a thing of the past. Fully variable gear ratios mean the CVT always delivers the right amount of power to the wheels whenever you push the throttle.



PUTS FUN THROUGH ITS PACES.

Feel like taking on the open road? Altima Sedan and Coupe have what you need with an advanced engine lineup and enough performance features to satisfy that inner enthusiast.

4-CYLINDER **175 HP¹ | 32 MPG HIGHWAY²**

V6 ENGINE **270 HP¹ | 27 MPG HIGHWAY²**

Two engine choices – Go for the high-energy 175-hp¹ 4-cylinder engine and you'll get friction-reducing technology like molybdenum-coated pistons and microfinished components. What's that all mean? You can have V6-like smoothness and performance, while still achieving up to 32 mpg². Or opt for Nissan's legendary VQ 3.5-liter V6 and you'll find that even the carpool lane can be a thrill. Thanks to a Continuously Variable Valve Timing Control System (CVTCS) that optimizes the opening of intake valves, you'll always have power on tap – off the line, or passing. And even with all that power at your disposal, you'll still get impressive fuel economy.

Continuously Variable Transmission (CVT) – Say goodbye to gear hunting. Seamless, instant acceleration is yours with the work of Nissan's virtually gearless CVT transmission.

6-speed manual transmission – Purist? A smooth-shifting 6-speed manual is available on Coupe to keep you close to the action.

Z[®]-inspired suspension – Those curves won't know what hit them. Your Altima's Z[®]-inspired suspension features a lightweight multi-link design for quick response, and a level ride through the twisty stuff.

Vehicle-speed-sensitive steering – Light when navigating a parking lot, more weighted when tackling the turns. That's a win-win. More boost at low speeds makes maneuvering easier, and less boost at higher speeds helps give you a secure, confident feel.

Vehicle Dynamic Control (VDC) – A slick spot in a corner can have you suddenly going in a direction you didn't want. VDC monitors steering and braking in comparison to the vehicle's actual path and reduces engine power and/or applies appropriate brake pressure to specific wheels to help keep you on your steered path.³

Traction Control System (TCS) – Altima's power is wasted if all it does is spin the tires, so when the standard Traction Control System senses drive-wheel spin, it responds by reducing throttle or applying brake pressure to help maintain traction.

Electronic Brake force Distribution (EBD) – When you have a car full of passengers, EBD senses the extra weight and sends additional force to the rear brakes for even greater confidence behind the wheel.

Standard Anti-lock Braking System (ABS) – The standard ABS pumps the brakes faster than you possibly can in panic-braking situations. This helps prevent wheel lockup, so you can continue to steer around obstacles while braking heavily.

¹CA emissions (SULEV) equipment causes nominal reductions in horsepower (from 175 hp to 170 hp) and torque (from 180 lb-ft to 175 lb-ft). SULEV vehicles are available in California and some northeastern states. ²2011 EPA fuel consumption estimate. Actual mileage may vary with driving conditions – use for comparison only. ³VDC, which should remain on when driving except when freeing the vehicle from mud or snow, cannot prevent accidents due to abrupt steering, carelessness, or dangerous driving techniques. Always drive safely.



TAKES TECHNOLOGY TO NEW HEIGHTS.

Looking to ratchet up your technology game? Your Altima has just what you need. Whether it's entertaining or convenient, if it's advanced and useful, you can bet it's available on Altima.

A. Nissan Navigation System – Stay on schedule with turn-by-turn Voice Guidance. Keep your crew entertained with an available in-dash DVD player. And avoid nasty bottlenecks with XM NavTraffic.¹ Enjoy trusted restaurant recommendations from Zagat Survey,² while XM NavWeather[™] helps you stay on top of changing weather. Wherever your life takes you, count on the satellite-based Nissan Navigation System to always keep you one step ahead.^{1,2}

B. RearView Monitor – Backing up in a crowded parking lot? Get a clearer picture of what's directly behind you with the available RearView Monitor.³

C. Nissan Intelligent Key[®] with Push Button Ignition – Forget fumbling to find your keys. Just leave the keys in your pocket or purse, walk up to your Altima and tap a button on the door to unlock it, then just push a button and go with standard Push Button Ignition.

D. iPod[®]/USB Interface – Would you like to be able to connect your iPod[®] or other portable MP3 player and listen to your own playlists or podcasts? Now you can. You can even control your iPod[®] through Altima's stereo controls.^{4,5}

E. Bose[®] Audio System – With the available 9-speaker Bose[®] audio system at your disposal, you'll actually feel like you're at the concert. The 4.3" display shows what song is up next on your MP3 CDs and even lets you browse through your folders at the touch of a button.

Bluetooth[®] Hands-free Phone System – Your Altima keeps you connected. Make or receive calls with a touch of a button on the steering wheel. All while your phone stays tucked away.⁶



¹Never program while driving. GPS mapping may not be detailed in all areas or reflect current road regulations. ²Required XM Radio, XM NavTraffic and XM NavWeather subscriptions sold separately. Installation costs, one-time activation fee, other fees and taxes will apply. XM NavTraffic available in select markets. XM Radio U.S. service and XM NavWeather service available only to those at least 18 years of age in the 48 contiguous United States and D.C. Fees and programming subject to change. Subscriptions governed by XM Customer Agreement available at xmradio.com. ©2010 SIRIUS XM Radio Inc. SIRIUS, XM and all related marks and logos are trademarks of SIRIUS XM Radio Inc. and its subsidiaries. ³Parking aid/convenience feature. Cannot completely eliminate blind spots or warn of moving objects. May not detect every object. Always check surroundings

before moving vehicle. Not a substitute for proper backing procedures. Always turn to check what is behind you before backing up. ⁴Driving is serious business and requires your full attention. Do not operate any devices connected to the USB or auxiliary audio input jack while driving. ⁵Always give your full attention to driving. Avoid operating your iPod[®] in such a way that you can be distracted during vehicle operation. See dealer for details. iPod is a registered trademark of Apple, Inc. All rights reserved. iPod not included. ⁶Availability of specific features is dependent upon the phone's Bluetooth[®] support. Please refer to your phone Owner's Manual for details. Cell phone not included. The Bluetooth word mark and logos are owned by Bluetooth SIG, Inc., and any use of such marks by Nissan is under license.

INSPIRES CONFIDENCE ON EVERY LEVEL.

With a comprehensive safety strategy that includes six standard air bags, and a long list of rigorous durability tests, a sense of security comes standard with every Altima.

Durability Tests – Your Altima is put through over 5,000 quality and durability tests to ensure it keeps performing mile after mile. This includes locking it in a chamber and baking it under 266 bulbs to reach extreme temperatures, as well as putting it through a battery of road tests where we replicate some of the worst road conditions possible.

Nissan Advanced Air Bag System – Incorporates seat belt sensors and an occupant-classification sensor to inflate the dual-stage supplemental front air bags according to crash severity and seat belt usage. Altima also has front side-impact supplemental air bags built into the seats, so they move with you. In addition, roof-mounted curtain supplemental air bags help protect you in the event of a side impact.¹

Front-seat Active Head Restraints – Designed to move up and forward in certain rear-end collisions to help cushion the blow if one should occur.

Snug Kids – Nissan safety engineers have dedicated thousands of hours to evaluating hundreds of child restraints in Nissans. The result: An industry first, The Snug Kids Child Safety Seat Fit Guide. This guide lists child seats that fit the rear seats of Nissan vehicles, as well as offers tips on correct installation. Look for the latest Fit **SnugKids** Guide at NissanUSA.com/SnugKids.

LATCH System – The Altima LATCH System (Lower Anchors and Tethers for CHildren) lets you secure LATCH-compatible child restraints in the rear seats without having to use seat belts or a locking clip.



¹Air bags are only a supplemental restraint system; always wear your seat belt. Even with the occupant-classification sensor, rear-facing child restraints should not be placed in the front-passenger's seat. Also, all children 12 and under should ride in the rear seat properly secured in child restraints, booster seats, or seat belts according to their size. Air bags will only inflate in certain accidents. See your Owner's Manual for more details. Inflated air bags shown for illustration purposes only. Actual air bags deflate after deployment.

SEDAN PACKAGES

SE 2.5 S Special Edition Package

16" Aluminum-alloy wheels
Fog lights
Rear spoiler
Automatic on/off headlights
Leather-wrapped steering wheel
Steering-wheel-mounted audio controls
Special Edition Badge

A 2.5 S Alloy Wheel Package

16" Aluminum-alloy wheels

CZ 2.5 S Convenience Package

16" Aluminum-alloy wheels
8-way power adjustable driver's seat
Automatic on/off headlights
Passenger-side front-window one-touch auto-up/down with auto-reverse
Remote front windows down and key-operated front windows up/down
Dual illuminated visor vanity mirrors with sun visor extenders
Leather-wrapped steering wheel
Steering-wheel-mounted audio controls
Wood-tone trim (Blond interior only)

CP 2.5 S Convenience Plus Package

Power sliding glass moonroof with tilt feature
Dual Zone Automatic Temperature Contol (ATC)
Folding outside mirrors with LED turn signal indicators
This package requires 2.5 S Convenience Package.

SL 2.5 SL Package

Leather-appointed seats and heated front seats
Driver's power adjustable lumbar support
Leather-wrapped shift knob
HomeLink Universal Transceiver
Auto-dimming inside rearview mirror with compass
Illuminated center console
Rear passenger upper vents
Premium metallic trim (Charcoal Leather interior only)
This package requires 2.5 S Convenience Plus Package.

P3 2.5 S Premium Audio Package

Digital Bose® audio system with 4.3" color display and 9 speakers
Bluetooth® Hands-free Phone System
RearView Monitor
XM® Satellite Radio⁵
USB connection port for iPod® interface and other compatible devices
MP3/WMA CD playback capability and Radio Data System (RDS)
This package requires 2.5 S Convenience Plus Package.

S 3.5 SR Sport Package

High Intensity Discharge (HID) xenon headlights
Power sliding glass moonroof with tilt feature
Fog lights and rear spoiler
Dual Zone Automatic Temperature Contol (ATC)

PA 3.5 SR Premium Package

Leather-appointed seats and heated front seats
Driver's power adjustable lumbar support
Leather-wrapped shift knob
Digital Bose® audio system with 4.3" color display and 9 speakers
Bluetooth® Hands-free Phone System
RearView Monitor
XM® Satellite Radio⁵
USB connection port for iPod® interface and other compatible devices
MP3/WMA CD playback capability and Radio Data System (RDS)
HomeLink Universal Transceiver
Auto-dimming inside rearview mirror with compass
Illuminated center console and rear passenger upper vents
Premium metallic trim (Charcoal Leather interior only)
This package requires 3.5 SR Sport Package.

TZ Technology Package (2.5 S, 3.5 SR)

Nissan Hard Drive Navigation System with 6.5" color touch-screen monitor and voice recognition⁶
XM NavTraffic,[®] and XM NavWeather[™]5 and *Zagat Survey*[®] restaurant reviews
9.3 GB Music Box[®] hard drive for digital music storage and playback
DVD playback capability
Streaming audio via Bluetooth[®] wireless technology
Steering-wheel-mounted navigation menu controls
Auxiliary audio/video input jacks
This package requires 2.5 SL Package, 2.5 S Premium Audio Package, accessory fog lights and accessory rear spoiler on 2.5 S models. 3.5 SR models require 3.5 SR Premium Package.
4.3" color display and in-mirror compass are deleted with this package.

DIMENSIONS/CAPACITIES

Exterior Dimensions – Inches		
	Coupe	Sedan
Wheelbase	105.3	109.3
Overall length	180.9	190.7
Overall width	70.7	70.7
Overall height		
2.5	–	58.0
2.5 S	55.9	58.0
3.5 SR	55.9	57.9
Track width (front/rear)	61.0/61.2	61.0/61.0

Interior Dimensions – Inches		
Front/rear		
Head room without moonroof	39.7/35.6	40.6/36.8
With moonroof	37.2/35.6	40.1/35.9
Leg room	42.5/34.4	44.1/35.8
Hip room	54.2/47.6	56.8/52.5
Shoulder room	53.9/52.4	55.7/55.5

Capacities		
Interior passenger volume (cu. ft.)	89.3	100.7
Cargo volume (cu. ft.)	8.2	15.3
Fuel tank (gals.)	20.0	20.0

Curb Weights – Lbs.			
	2.5	2.5 S	3.5 SR
Manual transmission Coupe	–	3,081	3,294
Xtronic CVT [*] Coupe	–	3,124	3,333
Sedan	3,180	3,193	3,357

2011 EPA Fuel Consumption Estimates – City/Hwy				
City/Hwy	2.5	2.5 S	3.5 SR	
Manual transmission Coupe	–	23/31	18/27	
Xtronic CVT [*] Coupe	–	23/32	20/27	
Sedan	23/32	23/32	20/27	

^{*}Actual mileage may vary with driving conditions – use for comparison only.

ACCESSORIZE.



Rear Spoiler



In-mirror RearView Monitor¹



BlueConnect[®] Bluetooth[®] Hands-free Phone System

Buying and owning a Nissan is like driving one: quick, convenient, confidence-inspiring.



Nissan Motor Acceptance Corporation. Whether you're buying or leasing, you'll find attractive rates and flexible terms to make your purchase more accessible.


New Vehicle Limited Warranties. Protection for your new Nissan includes 3-year/36,000-mile "bumper to bumper" basic coverage and 5-year/60,000-mile powertrain coverage.

Security+Plus.[®] For additional peace of mind, a variety of extended service plans lets you tailor the coverage to your driving habits.

Maintenance+Plus.[®] This extended plan ensures your Nissan will receive up to 17 different services and over 33 different inspection items at each visit, using the most up-to-date diagnostic equipment available.

Genuine Nissan Parts. When it comes time for service, any necessary replacement parts will be made using Genuine Nissan new or remanufactured parts, or Nissan-approved parts. And they're the only parts to carry Nissan's factory-backed limited warranty.

Nissan's philosophy toward the environment, "Seeking a symbiosis of people, vehicles and nature," describes our ideal for a sustainable mobile society, now and in the future. We launched the Nissan Green Program with specific objectives to realize this goal, and we are pursuing it energetically. For more information, log on to NissanUSA.com/green



Every Genuine Nissan Accessory is:

- Custom-fit, custom-designed and durability-tested.
- Backed by Nissan's 3-year/36,000-mile limited warranty.
- Easy to finance with vehicle purchase, for just a few dollars a month.

See your Nissan dealer for details, or go to NissanUSA.com

¹CA emissions (SULEV) equipment causes nominal reductions in horsepower (from 175 hp to 170 hp) and torque (from 180 lb-ft to 175 lb-ft). SULEV vehicles are available in California and some northeastern states. ²Standard on manual transmission models. ³Requires Leather Package. ⁴Required with Technology Package. ⁵Required XM Radio, XM NavTraffic and XM NavWeather subscriptions sold separately. Installation costs, one-time activation fee, other fees and taxes will apply. XM NavTraffic available in select markets. XM Radio U.S. service and XM NavWeather service available only to those at least 18 years of age in the 48 contiguous United States and D.C. Fees and programming subject to change. Subscriptions governed by XM Customer Agreement available at xmradio.com. ©2010 SIRIUS XM Radio Inc. SIRIUS, XM and all related marks and logos are trademarks of SIRIUS XM Radio Inc. and its subsidiaries. ⁶This option deletes digital compass in rearview mirror. [®]The Bluetooth word mark and logos are owned by Bluetooth SIG, Inc., and any use of such marks by Nissan is under license. [®]Bose is a registered trademark of The Bose Corporation. [®]iPod is a registered trademark of Apple, Inc. All rights reserved. iPod not included. [®]Zagat Survey is a registered trademark of Zagat Survey, LLC Ltd.

All illustrations, photographs and specifications in this publication are based on the latest product information available at the time of printing. Some vehicles shown with optional equipment. See the actual vehicle for complete accuracy. Availability and delivery times for particular models or equipment may vary. Nissan North America, Inc. reserves the right to make changes at any time, without prior notice, in prices, colors, materials, equipment, specifications, and models and to discontinue models or equipment. Specifications, options and accessories may differ in Hawaii, U.S. territories and other countries. For additional information on availability, options or accessories, see your Nissan dealer.

At NissanUSA.com, you'll find virtual product demonstrations, a way to "build your own Nissan," a dealer locator, and more information about key Nissan support services. Or if you'd prefer, call **1-800-NISSAN-3** for answers to specific questions about Altima or any other Nissan vehicle. The Nissan names, logos, product names, feature names, and slogans are trademarks owned by or licensed to Nissan Motor Co. Ltd. and/or its North American subsidiaries. **Always wear your seat belt, and please don't drink and drive.** ©2010 Nissan North America, Inc. '11 Altima. 1111330-12/10-150M-CGI (BE).

¹Parking aid/convenience feature. Cannot completely eliminate blind spots or warn of moving objects. May not detect every object. Always check surroundings before moving vehicle. Not a substitute for proper backing procedures. Always turn to check what is behind you before backing up. [®]BlueConnect is a registered trademark of Johnson Controls Interior Technology Corporation. [®]The Bluetooth word mark and logos are owned by Bluetooth SIG, Inc., and any use of such marks by Nissan is under license.

THERE'S AN ALTIMA SEDAN FOR YOU.



2.5

- 175-hp 2.5-liter 4-cylinder engine
- Xtronic CVT* (Continuously Variable Transmission) with manual mode
- Push Button Ignition and power windows, door locks and outside mirrors
- 4-wheel Anti-lock Braking System (ABS)
- Vehicle Dynamic Control (VDC) with Traction Control System (TCS)
- Remote keyless entry and trunk release
- Air conditioning with in-cabin microfilter
- 6 Standard air bags



2.5 S

Includes 2.5 equipment, plus:

- Nissan Intelligent Key®
- AM/FM/CD audio system with six speakers and auxiliary audio input jack
- Driver and front-passenger seatback pockets
- Passenger visor vanity mirror
- Driver's footrest finisher and carpeted trunk lid trim



2.5 S with 2.5 Special Edition Package

Includes 2.5 S equipment, plus:

- 16" Aluminum-alloy wheels and automatic on/off headlights
- Fog lights and rear spoiler
- Leather-wrapped steering wheel
- Steering-wheel-mounted audio controls
- Special Edition Badge



2.5 S with 2.5 SL Package

Includes 2.5 S equipment, plus:

- Leather-appointed seats with heated front seats
- Driver's seat power adjustable lumbar support
- 16" Aluminum-alloy wheels and automatic on/off headlights
- Leather-wrapped shift knob and HomeLink Universal Transceiver
- Auto-dimming rearview mirror with compass



3.5 SR

Includes 2.5 S equipment, plus:

- 270-hp 3.5-liter V6 engine
- 17" Aluminum-alloy wheels and sport-tuned suspension
- 8-way power adjustable driver's seat and leather-wrapped steering wheel
- Automatic on/off headlights
- Folding heated outside mirrors with turn signal indicators

PAINT SELECTIONS



Winter Frost QX3

	2.5	2.5 S	3.5 SR
Frost Cloth	■	■	
Blond Cloth		■	■
Blond Leather		■ SL	■ P4
Charcoal Cloth		■	■
Charcoal Leather		■ SL	■ P4



Super Black KH3

	2.5	2.5 S	3.5 SR
Frost Cloth	■	■	
Blond Leather		■ SL	■ P4
Charcoal Cloth		■	■
Charcoal Leather		■ SL	■ P4



Navy Blue RAB

	2.5	2.5 S	3.5 SR
Blond Cloth		■	■
Blond Leather		■ SL	■ P4
Charcoal Cloth		■	■
Charcoal Leather		■ SL	■ P4



Metallic Slate KBC

	2.5	2.5 S	3.5 SR
Frost Cloth	■	■	
Charcoal Cloth		■	■
Charcoal Leather		■ SL	■ P4



Ocean Gray RAP

	2.5	2.5 S	3.5 SR
Frost Cloth		■	
Charcoal Cloth		■	■
Charcoal Leather		■ SL	■ P4



Tuscan Sun NAD

	2.5	2.5 S	3.5 SR
Blond Cloth		■	■
Blond Leather		■ SL	■ P4
Charcoal Cloth		■	■
Charcoal Leather		■ SL	■ P4



Brilliant Silver K23

	2.5	2.5 S	3.5 SR
Frost Cloth	■	■	
Charcoal Cloth		■	■
Charcoal Leather		■ SL	■ P4



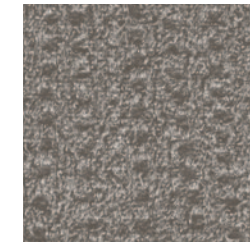
Saharan Stone KAH

	2.5	2.5 S	3.5 SR
Blond Cloth		■	
Blond Leather		■ SL	

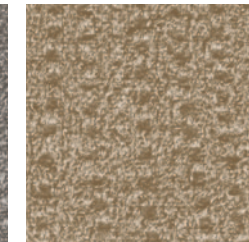
- Standard
- SL Part of 2.5 SL Package (Sedan)
- P4 Part of 3.5 SR Premium Package (Sedan)

FABRIC SELECTIONS

Frost Cloth



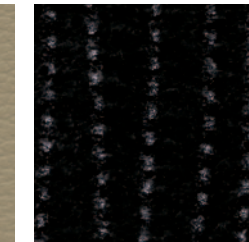
Blond Cloth



Blond Leather



Charcoal Cloth



Charcoal Leather



THERE'S AN ALTIMA COUPE FOR YOU.



2.5 S

- 175-hp 2.5-liter 4-cylinder engine
- 17" Aluminum-alloy wheels
- Nissan Intelligent Key® with Push Button Ignition
- 6-speed manual transmission
- 4-wheel disc brakes
- 4-wheel Anti-lock Braking System (ABS)
- Vehicle Dynamic Control (VDC) with Traction Control System (TCS)
- AM/FM/CD audio system with six speakers and auxiliary audio input jack
- Power windows, door locks, and outside mirrors
- Cruise control
- 60/40 Split fold-flat rear seats with lock
- Remote keyless entry and trunk release
- Air conditioning with in-cabin microfilter
- Multi-functional trip computer
- 6 Standard air bags



3.5 SR

Includes 2.5 S equipment, plus:

- 270-hp 3.5-liter V6 engine
- 18" Aluminum-alloy wheels
- Sport-tuned suspension
- Fog lights
- Larger exhaust outlet chrome-tip finishers
- Power sliding glass moonroof with tilt feature
- Folding heated outside mirrors with LED turn signal indicators
- Dual Zone Automatic Temperature Control (ATC)¹
- Digital Bose® audio system with XM® Satellite Radio¹
- Bluetooth® Hands-free Phone System¹
- RearView Monitor¹
- USB connection port for iPod® interface and other compatible devices^{1,2}
- 8-way power adjustable driver's seat with lumbar support
- Leather-wrapped steering wheel with audio controls
- Automatic on/off headlights

PAINT SELECTIONS



Crimson Black GAD

	2.5 S	3.5 SR
Charcoal Cloth	■	■
Charcoal Leather	L ■	L ■ ¹



Winter Frost QX3

	2.5 S	3.5 SR
Blond Cloth	■	■
Blond Leather	L ■	L ■ ¹
Charcoal Cloth	■	■
Charcoal Leather	L ■	L ■ ¹
Red Leather	L ■	L ■ ¹



Super Black KH3

	2.5 S	3.5 SR
Charcoal Cloth	■	■
Charcoal Leather	L ■	L ■ ¹
Red Leather	L ■	L ■ ¹



Metallic Slate KBC

	2.5 S	3.5 SR
Charcoal Cloth	■	■
Charcoal Leather	L ■	L ■ ¹
Red Leather	L ■	L ■ ¹



Ocean Gray RAP

	2.5 S	3.5 SR
Charcoal Cloth	■	■
Charcoal Leather	L ■	L ■ ¹



Red Alert A20

	2.5 S	3.5 SR
Blond Cloth	■	■
Blond Leather	L ■	L ■ ¹
Charcoal Cloth	■	■
Charcoal Leather	L ■	L ■ ¹



Brilliant Silver K23

	2.5 S	3.5 SR
Charcoal Cloth	■	■
Charcoal Leather	L ■	L ■ ¹
Red Leather	L ■	L ■ ¹



Navy Blue RAB

	2.5 S	3.5 SR
Blond Cloth	■	■
Blond Leather	L ■	L ■ ¹
Charcoal Cloth	■	■
Charcoal Leather	L ■	L ■ ¹

■ Standard

L ■ Part of Leather Package

¹Standard on manual transmission models.

FABRIC SELECTIONS

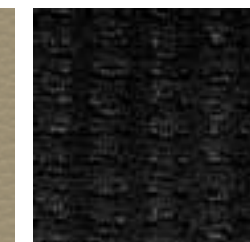
Blond Cloth



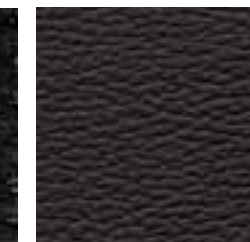
Blond Leather



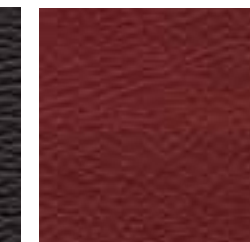
Charcoal Cloth



Charcoal Leather



Red Leather



¹Standard on manual transmission models. Optional on CVT models. ²Always give your full attention to driving. Avoid operating your iPod® in such a way that you can be distracted during vehicle operation. See dealer for details. ®iPod is a registered trademark of Apple, Inc. All rights reserved. iPod not included. ®Bose is a registered trademark of The Bose Corporation. ®The Bluetooth word mark and logos are owned by Bluetooth SIG, Inc., and any use of such marks by Nissan is under license.