

PRE-ORDER THE MOST INNOVATIVE ALTIMA® EVER

GET THE ALTIMA YOU WANT WITH 3 YEARS/45,000 MILES OF COMPLIMENTARY MAINTENANCE.¹

For a limited time only, you can get the Altima you want just how you want it, complimentary maintenance included. No compromises here. From color and interior to trim level and packages, the choices are yours. Just configure your ideal 2013 Altima online and complete the reservation prior to June 25, 2012 to get 3 years/45,000 miles of complimentary maintenance. Quantities are limited, so pre-order now!

TO PRE-ORDER:

- Go to www.NissanUSA.com/altima-pre-order, or scan the code to register
- Configure your new Altima and select your preferred Nissan dealership
- Place your refundable reservation fee of \$49 online or by calling 855-467-3212 and requesting a quote
- Meet with your dealer to finalize your Altima pre-order by July 9, 2012



¹Excludes 2013 Altima 2.5 base trim. Complimentary GOLD Schedule 2 Security+Plus Pre-Paid Maintenance policy for 36 months/45,000 miles (whichever comes first) on orders confirmed prior to 7/9/2012, or on the first 25,000 orders confirmed, whichever comes first. Requires a \$49 refundable reservation fee prior to 6/25/2012 (see details on NissanUSA.com) and the order separately confirmed with a dealer prior to 7/9/2012. Delivery must take place before 10/31/2012. Offer cannot be cumulated with fleet incentives. Coverage begins on original in-service date and zero miles on odometer. See dealer for coverage terms and details. Tire Road Hazard Protection is not available on contracts in Florida.



SHIFT_

THE ALL-NEW 2013 NISSAN ALTIMA



PRE-ORDER THE MOST INNOVATIVE ALTIMA® EVER

Take what you know about the typical sedan and throw it out the window.

The new Altima changes everything. Imagine amazing acceleration with more miles per gallon. Or a road-gripping, sports car-inspired suspension that makes driving fun. And more. Technologies that help give you peace of mind, like an available Blind Spot Warning System¹ and a standard Advanced Drive-Assist™ Display that gives you information in a snap. All with a premium new look and impressive styling, both inside and out. And when you pre-order prior to June 25, 2012, get 3 years' complimentary maintenance as our gift to you.² Because in the new Altima, confidence is key. So start the ignition.



¹The Blind Spot Warning System is not a substitute for proper lane change procedures. The system will not prevent contact with other vehicles or accidents due to careless or dangerous driving techniques or detect every vehicle or object around you. ²Excludes 2013 Altima 2.5 base trim. Complimentary GOLD Schedule 2 Security+Plus Pre-Paid Maintenance policy for 36 months/45,000 miles (whichever comes first) on orders confirmed prior to 7/9/2012, or on the first 25,000 orders confirmed, whichever comes first. Requires a \$49 refundable reservation fee prior to 6/25/2012 (see details on NissanUSA.com) and the order separately confirmed with a dealer prior to 7/9/2012. Delivery must take place before 10/31/2012. Offer cannot be cumulated with fleet incentives. Coverage begins on original in-service date and zero miles on odometer. See dealer for coverage terms and details. Tire Road Hazard Protection is not available on contracts in Florida.



THE FEELING OF CONFIDENCE. AND GOOSEBUMPS.

It's everything you've ever wanted in a sedan. Seamless acceleration and outstanding fuel economy. Confident cornering. Better control. A driving experience that's uniquely you. The new Altima does all this and more, pushing the envelope to give you sports car-like performance that's at home in the carpool lane. So do more than turn heads. Turn corners.

- Choose from either the spirited 4-cylinder engine or the heart-pumping V6 – and get improved fuel economy no matter which you drive.
- Next-generation Xtronic CVT® (Continuously Variable Transmission) is a revolution in automatic transmissions. Customize your driving experience to be fuel-efficient or sporty, and choose the V6 engine for a Formula 1-inspired experience with paddle shifters.
- An all-new multi-link rear suspension helps give you confident handling and control through every turn.

Scan this code to watch a video on Altima's better than ever Xtronic CVT® Transmission or go to bit.ly/AltimaCVT



LESS PUMP TIME. MORE GO TIME.

Lightweight materials, reduced friction, and a highly aerodynamic design? Check, check and check. Altima's 4-cylinder engine was made to do more with less, giving you top fuel economy while delivering optimal performance.

- Up to 15% more fuel-efficient than the 2012 Altima.¹
- Altima wears the PUREDRIVE™ badge, meaning it meets or exceeds the average Federal CAFE fuel economy standards for 2016,² reflecting our commitment to developing environmentally friendly technology for all.



15%

**MORE
FUEL-EFFICIENT
THAN THE 2012 ALTIMA¹**

¹Calculated by comparing estimated 2013 Altima 2.5 S EPA Fuel Economy Estimate 37 highway to 2012 Altima 2.5 S EPA Fuel Economy Estimate 32 highway. Actual mileage may vary with driving conditions – use for comparison only. ²Adoption criteria based upon US Federal CAFE standards as of July 2011 for MY 2016. Federal standards subject to change by US government.



**THE FEELING THAT PREMIUM
DOESN'T HAVE TO BE PRICEY.**



WHAT IF ASTRONAUTS HAD TO DRIVE TO OUTER SPACE?

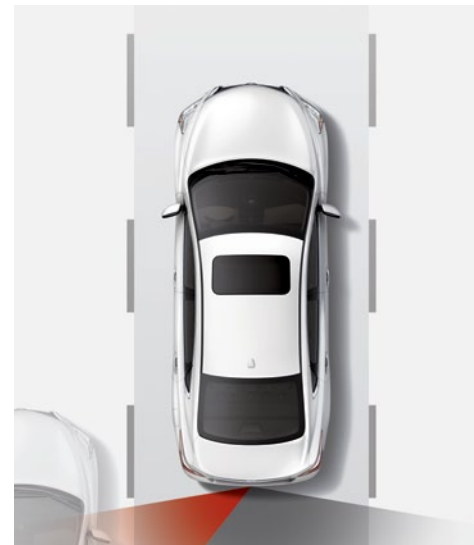
They'd be lucky to be in a new Altima. No matter where you're headed, Altima makes acclimating a breeze, keeping you comfortable and alert. Even when your commute seems longer than a trip to outer space.

- NASA-inspired “zero-gravity” seats lift you up to help relieve pressure points, helping to reduce fatigue while keeping you comfortable, no matter what your body type.
- Available features help keep you cozy, like heated front seats and steering wheel. Plus available Remote Engine Start capability to heat or cool your car at the touch of a button while you stay indoors.
- An exceptionally quiet interior, thanks to an advanced acoustic design and sound-absorbing materials.



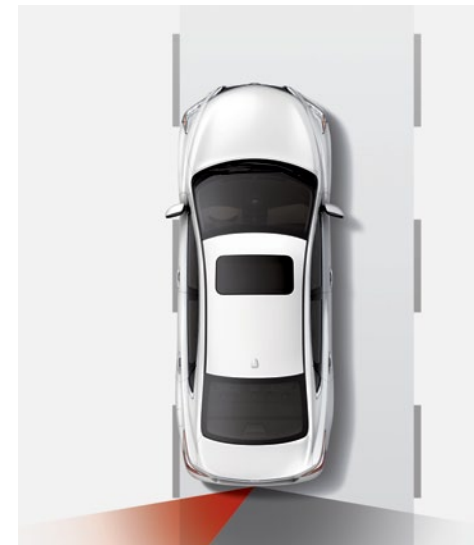
SAY HELLO TO TECHNOLOGY THAT LOOKS OUT FOR YOU.

WHETHER YOU'RE CHANGING LANES OR PARKING, ALTIMA GIVES YOU A WHOLE NEW WAY TO DOUBLE-CHECK.



BLIND SPOT WARNING¹

When another vehicle is in your blind spot area, an indicator appears inside the door next to the side mirror and on the Advanced Drive-Assist™ Display. Put your turn signal on, and the warning light illuminates, while a chime sounds to alert you.



LANE DEPARTURE WARNING²

Altima's rear camera constantly monitors the painted lane lines in the road. If it detects that you're straying from your lane, the lane departure system gives you both visual and audible alerts.



MOVING OBJECT DETECTION³

If Altima's next-generation RearView Monitor detects something moving behind your vehicle while in reverse, it gives both visual and audible alerts. You can even change the camera angle to get a wider perspective.

¹The Blind Spot Warning System is not a substitute for proper lane change procedures. The system will not prevent contact with other vehicles or accidents due to careless or dangerous driving techniques or detect every vehicle or object around you. ²The Lane Departure Warning system operates above approximately 45 mph and only when the lane markings are clearly visible on the road. Will not prevent loss of control. Refer to your Owner's Manual for more information. ³Parking aid/convenience feature. Cannot completely eliminate blind spots or warn of moving objects. May not detect every object. Always check surroundings before moving vehicle. Not a substitute for proper backing procedures. Always turn to check what is behind you before backing up.



EVER
FEEL LIKE YOU
HAVE A CASE OF

OVERLOAD?



DRIVE COMPUTER



CALLER ID



TURN-BY-TURN NAVIGATION¹

ALTIMA GIVES
YOU A NEW LINE OF

SIGHT

LANE DEPARTURE WARNING



TIRE PRESSURE MONITORING SYSTEM



AUDIO DISPLAY



NOW YOU CAN SEE FASTER, DRIVE SMARTER.

Traffic jams. Soy chai lattes. Dinner plans. With so much going on around you, it's easy to lose sight of what's most important: driving. From turn-by-turn directions to caller ID, the new Advanced Drive-Assist™ Display serves up info right in front of you – no more looking away.¹ Plus, its intuitive 3-D depth and tilt design improves cognition, helping you take it all in quicker. So you can focus on what really matters.

¹Driving is serious business and requires your full attention. Even with Advanced Drive-Assist Display, only use phone or other communication devices when safe.



NISSAN CONNECTSM

YOUR MUSIC YOUR WORLD

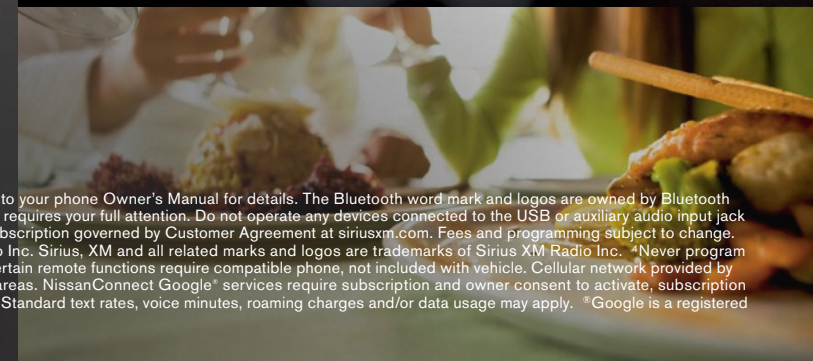
ANY WAY YOU WANT IT.

Let your passengers stream music with Bluetooth,¹ plug your iPod[®] into the available USB input,² or listen to SiriusXM[™] Satellite Radio.³ You can even connect your Pandora[®]-equipped phone through the audio system to customize your music experience right in the display.



ALWAYS UP TO DATE.

Navigate your way through the concrete jungle with the available Nissan Navigation System and find that new restaurant with always up-to-date Google.⁴ You can even send directions straight to your car from your mobile phone via Google.⁶





¹Availability of specific features is dependent upon the phone's Bluetooth[®] support. Please refer to your phone Owner's Manual for details. The Bluetooth word mark and logos are owned by Bluetooth SIG, Inc., and any use of such marks by Nissan is under license. ²Driving is serious business and requires your full attention. Do not operate any devices connected to the USB or auxiliary audio input jack while driving. ³SiriusXM Satellite Radio requires subscription sold separately after trial period. Subscription governed by Customer Agreement at siriusxm.com. Fees and programming subject to change. Available only to those 18 or older in the 48 contiguous states and D.C. ©2012 Sirius XM Radio Inc. Sirius, XM and all related marks and logos are trademarks of Sirius XM Radio Inc. ⁴Never program while driving. GPS mapping may not be detailed in all areas or reflect current road regulations. Certain remote functions require compatible phone, not included with vehicle. Cellular network provided by independent cellular companies not within Nissan's control. Cellular network not available in all areas. NissanConnect Google[®] services require subscription and owner consent to activate, subscription service for first 36 months included in vehicle price, subscription available for purchase thereafter. Standard text rates, voice minutes, roaming charges and/or data usage may apply. ⁵Google is a registered trademark of Google Inc. ⁶Pandora is a registered trademark of Pandora Media, Inc.

4-CYLINDER

2.5 S		\$22,500	
2.5-liter DOHC 16-valve 4-cylinder engine, Xtronic CVT® (Continuously Variable Transmission), Active Understeer Control (AUC), Vehicle Dynamic Control (VDC), Traction Control System (TCS), Bluetooth® Hands-free Phone System, ¹ Streaming audio via Bluetooth® wireless technology, ¹ Nissan Intelligent Key® with Push Button Ignition, 6-way power adjustable driver's seat, Advanced Drive-Assist™ Display, Tire Pressure Monitoring System (TPMS) with individual tire pressure display and Easy Fill Tire Alert, ² AM/FM/CD audio system with 6 speakers, illuminated steering-wheel-mounted audio controls, air conditioning with in-cabin microfilter, Smart Auto Headlights, cruise control, 60/40 split fold-down rear seatbacks, seatback pockets, dual exhaust outlets with chrome tip finishers, 6 air bags, and more			
2.5 SV	2.5 S EQUIPMENT PLUS:	\$24,100	
17" Aluminum-alloy wheels, Dual Zone Automatic Temperature Control (ATC) with rear passenger vents, Remote Engine Start System, RearView Monitor, ³ upgraded audio system with 5" color display and speed-sensitive volume control, USB connection port for iPod® interface, ⁴ SiriusXM™ Satellite Radio, ⁵ Pandora® radio capability, hands-free text messaging assistant, ⁶ leather-wrapped steering wheel, and more			
2.5 SL	2.5 SV EQUIPMENT PLUS:	\$28,050	
Leather-appointed seats, Bose® premium audio system with 9 speakers, power sliding glass moonroof, wood-tone trim (Beige interior) and metallic-tone trim (Charcoal interior), heated steering wheel, 8-way power adjustable driver's seat, driver's seat power adjustable lumbar support, heated front seats, LED taillights, folding outside mirrors with LED turn signal indicators, heated outside mirrors, fog lights, HomeLink® Universal Transceiver, auto-dimming inside rearview mirror, adjustable rear head restraints, leather-wrapped shift knob, passenger-side front-window one-touch auto-up/down, dual illuminated visor vanity mirrors with sun visor extenders, side cargo net, and more			

¹Availability of specific features is dependent upon the phone's Bluetooth® support. Please refer to your phone Owner's Manual for details. The Bluetooth word mark and logos are owned by Bluetooth SIG, Inc., and any use of such marks by Nissan is under license. ²Vehicle must be on for Easy Fill Tire Alert to operate. ³Parking aid/convenience feature. Cannot completely eliminate blind spots or warn of moving objects. May not detect every object Always check surroundings before moving vehicle. Not a substitute for proper backing procedures. Always turn to check what is behind you before backing up. ⁴Driving is serious business and requires your full attention. Do not operate any devices connected to the USB or auxiliary audio input jack while driving. ⁵Required SiriusXM Satellite Radio, NavTraffic and NavWeather monthly subscriptions sold separately. Subscriptions governed by Customer Agreement available at siriusxm.com. NavTraffic only available in select markets. For more information, see www.siriusxm.com. ⁶Driving is serious business and requires your full attention. Even with Advanced Drive-Assist Display,™ only use phone or other communication devices when safe. ⁷Never program while driving. GPS mapping may not be detailed in all areas or reflect current road regulations. ⁸Late availability. ⁹The Blind Spot Warning System is not a substitute for proper lane change procedures. The system will not prevent contact with other vehicles or accidents due to careless or dangerous driving techniques or detect every vehicle or object around you. ¹⁰The Lane Departure Warning system operates above approximately 45 mph and only when the lane markings are clearly visible on the road. Will not prevent loss of control. Refer to your Owner's Manual for more information. Certain remote functions require compatible phone, not included with vehicle. Cellular network provided by independent cellular companies not within Nissan's control. Cellular network not available in all areas. NissanConnect Google® services require subscription and owner consent to activate, subscription service for first 36 months included in vehicle price, subscription available for purchase thereafter. Standard text rates, voice minutes, roaming charges and/or data usage may apply. ¹¹HomeLink is a registered trademark of Johnson Controls Technology Company. ¹²Bose is a registered trademark of The Bose Corporation. ¹³Google is a registered trademark of Google, Inc. ¹⁴iPod is a registered trademark of Apple, Inc. All rights reserved. iPod not included. ¹⁵Pandora is a registered trademark of Pandora Media Inc.

V6 ENGINE

3.5 S	2.5 S EQUIPMENT PLUS:	\$25,360	
3.5-liter DOHC 24-valve V6 engine, 18" aluminum-alloy wheels, paddle shifters and manual shift mode			
3.5 SV	3.5 S EQUIPMENT PLUS:	\$27,780	
Power sliding glass moonroof, Dual Zone Automatic Temperature Control (ATC) with rear passenger vents, Remote Engine Start System, RearView Monitor, ³ upgraded audio system with 5" color display and speed-sensitive volume control, USB connection port for iPod® interface, ⁴ SiriusXM™ Satellite Radio, ⁵ Pandora® radio capability, hands-free text messaging assistant, ⁶ folding outside mirrors with LED turn signal indicators, fog lights, HomeLink® Universal Transceiver, auto-dimming inside rearview mirror, leather-wrapped steering wheel, dual illuminated visor vanity mirrors with sun visor extenders, passenger-side front-window one-touch auto-up/down, side cargo net, and more			
3.5 SL	3.5 SV EQUIPMENT PLUS:	\$30,080	
Leather-appointed seats, Bose® premium audio system with 9 speakers, High Intensity Discharge (HID) xenon headlights, wood-tone trim (Beige interior) and metallic-tone trim (Charcoal interior), heated steering wheel, 8-way power adjustable driver's seat, driver's seat power adjustable lumbar support, heated front seats, LED taillights, heated outside mirrors, adjustable rear head restraints, and more			

CONVENIENCE PACKAGE (2.5 SV ONLY)

Power sliding glass moonroof, fog lights, folding outside mirrors with LED turn signal indicators, dual illuminated visor vanity mirrors with sun visor extenders, passenger-side front-window one-touch auto-up/down, auto-dimming inside rearview mirror, HomeLink® Universal Transceiver, side cargo net

NAVIGATION PACKAGE⁵ (2.5 SV AND 3.5 SV ONLY)

Nissan Navigation System with 7.0" color touch-screen monitor and voice recognition,⁷ steering-wheel-mounted navigation menu controls, NavTraffic and NavWeather,⁵ POIs powered by Google® and Google® Send-To-Car

This package requires Convenience Package on 2.5 SV models.

TECHNOLOGY PACKAGE⁸ (2.5 SL AND 3.5 SL ONLY)

Nissan Navigation System with 7.0" color touch-screen monitor and voice recognition,⁷ steering-wheel-mounted navigation menu controls, NavTraffic and NavWeather,⁵ POIs powered by Google® and Google® Send-To-Car, Moving Object Detection (MOD),³ Blind Spot Warning (BSW),⁹ Lane Departure Warning (LDW)¹⁰

EXTERIOR COLORS



Super Black KH3



Cayenne Red NAH



Java Metallic CAJ



Saharan Stone KAH

2.5 S 2.5 SV 2.5 SL 3.5 S 3.5 SV 3.5 SL

BEIGE LEATHER			■			■
BEIGE CLOTH	■	■		■	■	
CHARCOAL LEATHER			■			■
CHARCOAL CLOTH	■	■		■	■	

2.5 S 2.5 SV 2.5 SL 3.5 S 3.5 SV 3.5 SL

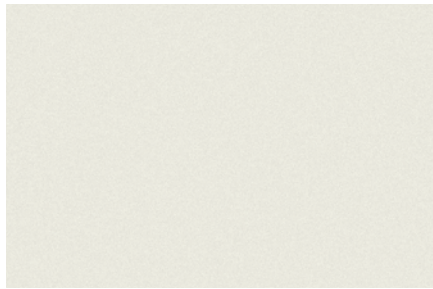
BEIGE LEATHER			■			■
BEIGE CLOTH	■	■		■	■	
CHARCOAL LEATHER			■			■
CHARCOAL CLOTH	■	■		■	■	

2.5 S 2.5 SV 2.5 SL 3.5 S 3.5 SV 3.5 SL

BEIGE LEATHER			■			■
BEIGE CLOTH	■	■		■	■	
CHARCOAL LEATHER			■			■
CHARCOAL CLOTH	■	■		■	■	

2.5 S 2.5 SV 2.5 SL 3.5 S 3.5 SV 3.5 SL

BEIGE LEATHER			■			■
BEIGE CLOTH	■	■		■	■	
CHARCOAL LEATHER			■			■
CHARCOAL CLOTH	■	■		■	■	



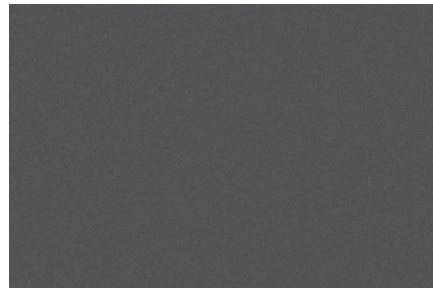
Pearl White QAB



Storm Blue RBD



Brilliant Silver K23



Metallic Slate KBC

2.5 S 2.5 SV 2.5 SL 3.5 S 3.5 SV 3.5 SL

BEIGE LEATHER			■			■
BEIGE CLOTH	■	■		■	■	
CHARCOAL LEATHER			■			■
CHARCOAL CLOTH	■	■		■	■	

2.5 S 2.5 SV 2.5 SL 3.5 S 3.5 SV 3.5 SL

BEIGE LEATHER			■			■
BEIGE CLOTH	■	■		■	■	
CHARCOAL LEATHER			■			■
CHARCOAL CLOTH	■	■		■	■	

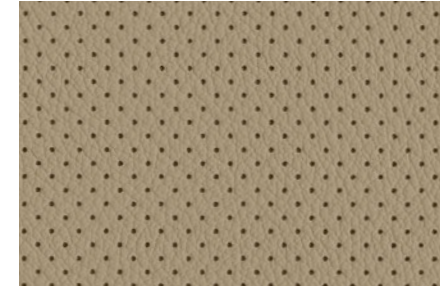
2.5 S 2.5 SV 2.5 SL 3.5 S 3.5 SV 3.5 SL

BEIGE LEATHER						
BEIGE CLOTH	■	■		■	■	
CHARCOAL LEATHER			■			■
CHARCOAL CLOTH	■	■		■	■	

2.5 S 2.5 SV 2.5 SL 3.5 S 3.5 SV 3.5 SL

BEIGE LEATHER						
BEIGE CLOTH	■	■		■	■	
CHARCOAL LEATHER			■			■
CHARCOAL CLOTH	■	■		■	■	

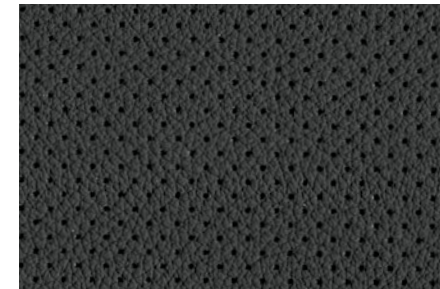
INTERIOR COLORS



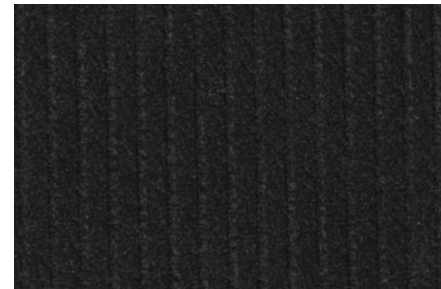
Beige Leather



Beige Cloth



Charcoal Leather



Charcoal Cloth

This brochure is intended for general descriptive and informational purposes only. It is subject to change and does not constitute an offer, representation or warranty (express or implied) by Nissan North America, Inc. Interested parties should confirm the accuracy of any information in this brochure as it relates to a vehicle directly with Nissan North America, Inc., before relying on it to make a purchase decision. Nissan North America, Inc., reserves the right to make changes, at any time, without prior notice, in prices, colors, materials, equipment, specifications, and models and to discontinue models or equipment. Due to continuous product development and other pre- and post-production factors, actual vehicle, materials and specifications may vary from this brochure. Some vehicles shown with optional equipment. See the actual vehicle for complete accuracy. Availability and delivery times for particular models or equipment may vary. Specifications, options and accessories may differ in Hawaii, U.S. territories and other countries. For additional information on availability, options or accessories, see your Nissan dealer or contact Nissan North America, Inc.

At **NissanUSA.com**, you'll find virtual product demonstrations, a way to "build your own Nissan," a dealer locator, and more information about key Nissan support services. Or if you'd prefer, call **1-800-NISSAN-3** for answers to specific questions about Altima or any other Nissan vehicle. The Nissan names, logos, product names, feature names, and slogans are trademarks owned by or licensed to Nissan Motor Co. Ltd. and/or its North American subsidiaries. **Always wear your seat belt, and please don't drink and drive.** ©2012 Nissan North America, Inc. '13 Altima. 1313001N-03/12-150M-CGI.