



Nissan GT-R shown in Gun Metallic.

PRINTED EXCLUSIVELY FOR

2011 NISSAN GT-R

A SUPERCAR WITHOUT SUPERCAR LIMITATIONS. So capable, it can be driven anytime and anywhere. So intuitive to drive, anyone can enjoy it.¹ The ultimate expression of a company famous for making cars for passionate drivers. The 2011 Nissan GT-R. The Legend is Real.

¹ Driving is serious business and requires your full attention. At all times, obey traffic laws. Not intended for unpaved off-road use. Always wear your seat belt, and please don't drink and drive.

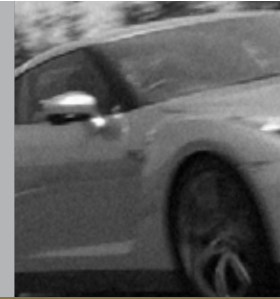


SHIFT the way you move



ENTER THE TURN

Bilstein® DampTronic™ suspension set to R-Mode. Massive Brembo® 15" brakes with 6-piston front and 4-piston rear calipers letting you brake deeper in the turn than you've ever imagined. And responding to your demands are tires perfected from tests of over 400 different front and rear tread designs and compounds.



EXIT THE TURN

Vehicle Dynamic Control¹ set to R-Mode. The magic of an ideal weight distribution in motion, thanks in part to a rear-mounted transaxle. Roll on the power and All-Wheel Drive seamlessly converts massive grip to breathtaking acceleration. While an in-dash performance monitor records your every move for debriefing later.



LEAVE CHANGED FOREVER Under your right foot, 485 horsepower turning a carbon-composite driveshaft. Doling out power, the most advanced All-Wheel Drive system we've ever designed. Just 0.2 seconds between shifts. One relentless push forward. And the unshakable sense that you'll never look at performance the same way again.

¹ VDC, which should remain on when driving except when freeing the vehicle from mud or snow, cannot prevent accidents due to abrupt steering, carelessness, or dangerous driving techniques. Always drive safely.

Anyone, anytime, anywhere¹ – at the touch of a button. At the heart of the Nissan GT-R's amazing abilities are three switches on the dash that allow on-the-fly adjustment of the suspension, VDC stability control² and dual-clutch transmission.



TRANSMISSION

R-MODE

For maximum performance with fastest shift speeds

NORMAL MODE

For maximum smoothness and efficiency

SNOW MODE

Provides gentler starting and shifting on slippery surfaces

SUSPENSION

R-MODE

Engages maximum damping rate for high-performance cornering

NORMAL MODE

For automatic electronic control of damping

COMFORT MODE

To minimize freeway hop and ride harshness on rough roads

VDC

R-MODE

For ultimate performance; raises the threshold at which the system intervenes

NORMAL MODE

For daily driving; controls brakes and engine output

OFF

Disengages the VDC system

¹Driving is serious business and requires your full attention. At all times, obey traffic laws. Not intended for unpaved off-road use. Always wear your seat belt, and please don't drink and drive.

²VDC, which should remain on when driving except when freeing the vehicle from mud or snow, cannot prevent accidents due to abrupt steering, carelessness, or dangerous driving techniques. Always drive safely.



Superior performance – at every level.

- Electronic analog instrument cluster with upshift indicator, multi-function drive computer and digital gear indicator
- Touch-screen, hard disk drive, voice-activated navigation with XM NavTraffic® and XM NavWeather™¹
- Multi-Function Display, including performance monitor with choice of 11 screens, including 4 customizable displays
- 9.3 GB Music Box® audio system with room to store up to 2,900 songs
- 11-speaker Bose® audio system with dual subwoofers between the rear seats
- USB connectivity (iPod®-compatible)² and DVD playback
- Nissan Intelligent Key® with Push Button Ignition
- Bluetooth® Hands-free Phone System and streaming audio via Bluetooth® wireless technology
- Hand-stitched, leather-wrapped steering wheel with audio and cruise controls
- Large trunk with room for two golf bags

Features+Specifications

Engine	VR38 twin-turbocharged 3.8-liter plasma-sprayed bore V6, 485 horsepower, 434 lb-ft of torque
Drivetrain	ATTESA E-TS All-Wheel Drive system with rear-mounted transaxle integrating transmission, differential and AWD transfer case. Carbon-composite main driveshaft. 1.5-way high-performance mechanical limited-slip differential.
Transmission	Dual clutch 6-speed transmission with paddle shifters and three driver-selectable modes
Suspension	4-wheel independent suspension with Bilstein® DampTronic™ system and three driver-selectable modes.
Brakes	Nissan/Brembo® 15" full-floating drilled rotors with diamond-pattern internal ventilation. 6-piston (front) and 4-piston (rear) calipers.
Wheels/Tires	20" x 9.5" (front) and 20" x 10.5" (rear) super-lightweight forged alloy wheels. Exclusively developed nitrogen-filled high-performance run-flat summer tires, 255/40R20 (front) and 285/35R20 (rear).
Body/Chassis	Exclusive Premium Midship (PM) platform with jig-welded unibody. Hybrid steel, carbon fiber and die-cast aluminum construction.

Paint+Fabric



Black Obsidian KH3



Gun Metallic KAD



Super Silver KAB



Pearl White QAB



Solid Red A54

Black Leather/
Synthetic
Suede



Gray Leather/
Synthetic
Suede



¹Required XM Radio, XM NavTraffic and XM NavWeather subscriptions sold separately after trial period. Installation costs, one-time activation fee, other fees and taxes will apply. XM NavTraffic available in select markets. XM Services available only to those at least 18 years of age in the 48 contiguous United States and D.C. Fees and programming subject to change. Subscriptions governed by XM Customer Agreement available at xmradio.com. ©2009 SIRIUS XM Radio Inc. SIRIUS, XM and all related marks and logos are trademarks of SIRIUS XM Radio Inc. and its subsidiaries. ²Driving is serious business and requires your full attention. Do not operate any devices connected to the USB input while driving. Bilstein is a registered trademark of ThyssenKrupp Bilstein GmbH. DampTronic is a trademark of ThyssenKrupp Bilstein GmbH. Brembo is a registered trademark of Freni Brembo S.p.A. Bose is a registered trademark of The Bose Corporation. The Bluetooth word mark and logos are owned by Bluetooth SIG, Inc., and any use of such marks by Nissan is under license.

All illustrations, photographs and specifications are based on the latest product information available. Some vehicles shown with optional equipment. See the actual vehicle for complete accuracy. Availability and delivery times for particular models or equipment may vary. Nissan North America, Inc. reserves the right to make changes at any time, without prior notice, in prices, colors, materials, equipment, specifications and models, and to discontinue models or equipment. Specifications, options and accessories may differ in Hawaii, U.S. territories and other countries. For additional information on availability, options or accessories, see your Nissan dealer. The Nissan names, logos, product names, feature names, and slogans are trademarks owned by or licensed to Nissan Motor Co. Ltd. and/or its North American subsidiaries. Always wear your seat belt, and please don't drink and drive. © 2010 Nissan North America, Inc.

Choose a dealer to buy your GT-R