

## NISSAN INTELLIGENT MOBILITY™

Nissan Intelligent Mobility guides everything we do. We're using new technologies to transform cars from mere driving machines into assistants. Together the journey is more confident, connected, and exciting. Whether it's cars that assist in the driving task, or highways that charge your EV as you go along, it's all in the very near future. And it's a future already taking shape in the Nissan you drive today.

### SEE GT-R® COME TO LIFE

Go to [NissanUSA.com](http://NissanUSA.com) and find an interactive brochure for GT-R® and every Nissan in the lineup. Available on desktop or smartphone, it's the full product story – including demos, videos, and complete info on trims, colors, and accessories.

Or download the Interactive Brochure Hub app on your tablet. Free on the App Store® and Google Play.™



Innovation  
that excites

2018  
GT-R®



<sup>1</sup>Extra cost option. <sup>2</sup>Driving is serious business and requires your full attention. At all times, obey traffic laws. Not intended for unpaved off-road use. Always wear your seat belt, and please drive responsibly. <sup>3</sup>VDC, which should remain on when driving except when freeing the vehicle from mud or snow, cannot prevent accidents due to abrupt steering, carelessness, or dangerous driving techniques. <sup>4</sup>Never program while driving. GPS mapping may not be detailed in all areas or reflect current road status. <sup>5</sup>Available services/features may be shown. Compatible connected device may be required. Only use services/features and device when safe and legal to do so. Subject to GPS and wireless network availability and connection, and system/technology limitations. Text rates/data usage/subscription may apply. Some services/features provided by companies not within Nissan or its partners' or agents' control and may be discontinued at any time. For more information, see dealer, Owner's Manual, or [NissanUSA.com/connect/important-information](http://NissanUSA.com/connect/important-information). <sup>6</sup>Obey all traffic laws, always drive safely and wear your seat belt. Damage resulting from racing, competitive driving, track and/or airstrip use not covered by warranty. See your New Vehicle Limited Warranty and Owner's Manual for proper vehicle operation and complete warranty details. <sup>7</sup>Dry carbon-fiber requires specific maintenance. Please see your Owner's Manual for details. <sup>8</sup>Professional driver. Closed course. Obey all traffic laws, always drive safely and wear your seat belt. Damage resulting from racing, competitive driving, track and/or airstrip use not covered by warranty. See your New Vehicle Limited Warranty and Owner's Manual for proper vehicle operation and complete warranty details. <sup>9</sup>Genuine Nissan Accessories are covered by Nissan's Limited Warranty on Genuine Nissan Replacement Parts, Genuine NISMO® S-Tune Parts, and Genuine Nissan Accessories for the longer of 12 months/12,000 miles (whichever occurs first) or the remaining period under the 3-year/36,000-mile (whichever occurs first) Nissan New Vehicle Limited Warranty. Terms and conditions apply. See Warranty Information Booklet for details. <sup>10</sup>Affiliated product. <sup>11</sup>Always use appropriate tires for weather conditions. See Owner's Manual for details. Failure to use appropriate tires could cause an accident resulting in serious injury or death. <sup>12</sup>Parking aid/convenience feature. Cannot completely eliminate blind spots. May not detect every object and does not warn of moving objects. Always check surroundings and turn to look behind you before moving vehicle. <sup>13</sup>The Sonar System is a convenience, not a substitute for proper parking and/or backing procedures. Always check that it is safe to do so before moving vehicle. May not detect every object. <sup>14</sup>Air bags are only a supplemental restraint system; always wear your seat belt. Even with the occupant-classification sensor, rear-facing child restraints should not be placed in the front-passenger's seat. All children 12 and under should ride in the rear seat properly secured in child restraints, booster seats, or seat belts according to their size. Air bags will only inflate in certain accidents; see your Owner's Manual for more details. <sup>15</sup>TPMS is not a substitute for regular tire pressure checks. Alcantara® is a registered trademark of Alcantara S.p.A. Corporation. Android Auto™ is a trademark of Google, Inc. Apple CarPlay™ is a trademark of Apple, Inc. The App Store® is a registered trademark of Apple, Inc. All rights reserved. Bilstein® and DampTronic are registered trademarks of ThyssenKrupp Bilstein GmbH. Bluetooth® is a registered trademark of Bluetooth SIG, Inc. Bose® is a registered trademark of The Bose Corporation. Brembo® is a registered trademark of Freni Brembo S.p.A. Dunlop® and SP SPORT MAXX® are registered trademarks of DNA Ltd. Corporation. Facebook® is a registered trademark of Facebook, Inc. Google Play™ is a trademark of Google, Inc. HD Radio® is a registered trademark of iBiquity Digital Corporation. HomeLink® is a registered trademark of Gentex Corporation. RAYS® is a registered trademark of RAYS Engineering. Recaro® is a registered trademark of Recaro North America, Inc. Siri® and Siri® Eyes Free are registered trademarks of Apple, Inc. The Sirius®, XM®, and SiriusXM® names and all related marks and logos are trademarks of Sirius XM Radio Inc. All other trademarks are the property of their respective owners. Twitter® is a registered trademark of Twitter, Inc. YouTube® is a registered trademark of Google Inc. This brochure is intended for general descriptive and informational purposes only. It is subject to change and does not constitute an offer, representation or warranty (express or implied) by Nissan North America, Inc. Interested parties should confirm the accuracy of any information in this brochure as it relates to a vehicle directly with Nissan North America, Inc., before relying on it to make a purchase decision. Nissan North America, Inc., reserves the right to make changes, at any time, without prior notice, in prices, colors, materials, equipment, specifications, and models and to discontinue models or equipment. Due to continuous product development and other pre- and post-production factors, actual vehicle, materials and specifications may vary from this brochure. Some vehicles shown with optional equipment. See the actual vehicle for complete accuracy. Availability and delivery times for particular models or equipment may vary. Specifications, options and accessories may differ in Hawaii, U.S. territories and other countries. For additional information on availability, options or accessories, see your Nissan dealer or contact Nissan North America, Inc. At [NissanUSA.com](http://NissanUSA.com), you'll find virtual product demonstrations, a way to "build your own Nissan," a dealer locator, and more information about key Nissan support services. Or if you'd prefer, call 1-800-NISSAN-3 for answers to specific questions about GT-R® or any other Nissan vehicle. The Nissan names, logos, product names, feature names, and slogans are trademarks owned by or licensed to Nissan Motor Co. Ltd. and/or its North American subsidiaries. Other trademarks and trade names are those of their respective owners. **Always wear your seat belt, and please drive responsibly.** ©2017 Nissan North America, Inc. '18 GTR. 1820681-N-9/17-60M-CGI

**THE ONE** stands apart from the many. Dares to be bold. Radical. Unique. Breaking rules, defying description, confounding competitors. No other supercar looks like it or performs like it. Because no one else is willing to ask the questions – and fearlessly go where the answers lead. But that's how you create a legend. **THE GT-R.**



## HANDCRAFTED PERFORMANCE

Each GT-R® engine is assembled by a single craftsman – called “Takumi” – renowned for their dedication and mastery. And with only five Takumi in the world entrusted with the honor, the plaque on the engine bearing their name has true significance. As one of the Takumi says, “We put our souls into each engine, hoping to deliver that excitement to customers.”

565  
HORSEPOWER

## AERODYNAMIC ALCHEMY

Rather than being confined by the demands of aerodynamics, the Nissan GT-R sculpts the air to its needs – becoming a force of nature, as much as a force to be reckoned with. Every aerodynamic detail was considered. A 1% energy loss around the C-pillar was enough for the GT-R’s fanatical engineers to redesign the pillar to create a cleaner design.

.26cd



## A SHARPER FOCUS ON DRIVING

Taking advantage of the capabilities of Nissan GT-R requires your attention, but it should never feel like information overload. The GT-R’s intuitive dashboard design makes access and use simpler, giving you more time to focus on what’s important – the pure enjoyment of the drive.

5 customizable performance screens

Display Commander media controller

Steering wheel-mounted paddle shifters



## MASTERY AT EVERY TOUCHPOINT

The GT-R’s interior is a masterful blend of premium materials, from hand-stitching in the cabin to a dashboard pad created from a single, hand-selected Nappa leather hide. Subtle etching on the aluminum bezels enhance their feel, while sport seats provide comfort and support, creating an ideal place to take it all in.

Carbon-fiber interior accents

Hand-stitched leather-appointed interior trims

Machined aluminum interior accents



**NISSAN GT-R® NISMO**  
**THE ULTIMATE GT-R**

**600 HP**

**nismo®**

Pure. Undiluted. Awe-inducing. 600 horsepower of fury combined with unmatched control. From its high-capacity turbos to its specially tuned suspension, this is the ultimate GT-R.

On the outside, aggressive aerodynamic design adds a unique rear spoiler and carbon-fiber bumpers, trunk lid, and side sills. Subtle yet special, contrasting dark gray mirrors feature a red accent stripe. The entire body sits poised over unique front and rear alloy wheels, wearing specially developed Dunlop® tires.

Inside is just as focused, with Recaro® seats, an Alcantara®-wrapped steering wheel with red leather stripe at 12 o'clock, and a signature NISMO red throughout the cabin, including the seatbacks, tachometer face, shift lever, and door handle pulls.

**481 lb-ft of torque**

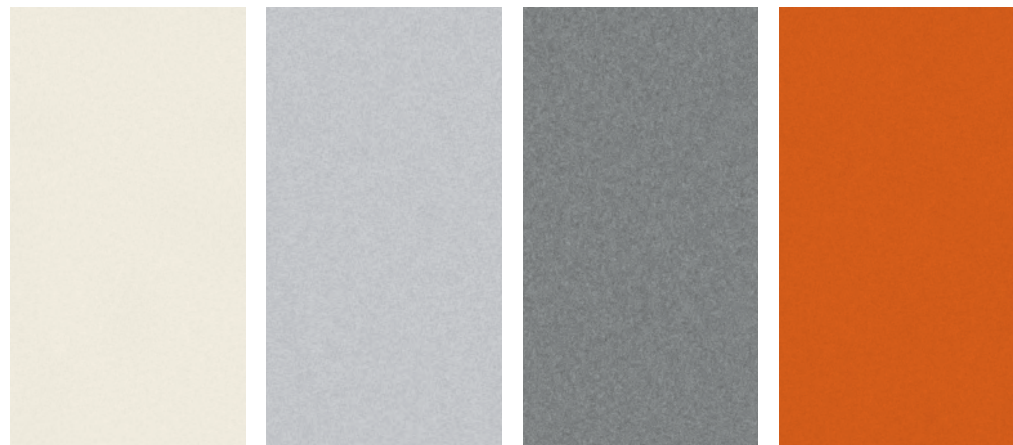
**0.26 coefficient of drag**

**NISMO unique 6-spoke wheels**

**NISMO carbon-fiber body kit**



## CHOOSE YOUR COLOR



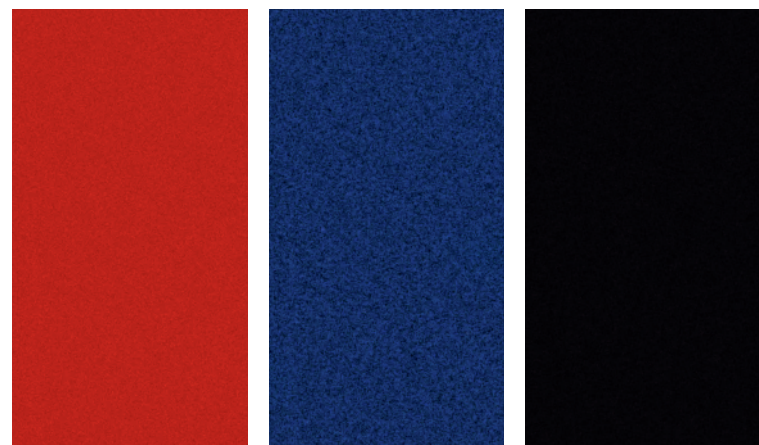
Pearl White<sup>1</sup> QAB

Super Silver<sup>1</sup> KAB

Gun Metallic<sup>1</sup> KAD

Blaze Metallic<sup>1</sup> EBG

	TRACK		TRACK		TRACK	
	PURE	PREMIUM	EDITION	NISMO	PURE	PREMIUM
BLACK LEATHER	<input checked="" type="checkbox"/>	<input checked="" type="checkbox"/>	<input type="checkbox"/>	<input type="checkbox"/>	<input type="checkbox"/>	<input type="checkbox"/>
KURO NIGHT LEATHER <sup>1</sup>	<input type="checkbox"/>	<input type="checkbox"/>	<input type="checkbox"/>	<input type="checkbox"/>	<input type="checkbox"/>	<input type="checkbox"/>
RAKUDA TAN LEATHER <sup>1</sup>	<input type="checkbox"/>	<input type="checkbox"/>	<input type="checkbox"/>	<input type="checkbox"/>	<input type="checkbox"/>	<input type="checkbox"/>
RED AMBER LEATHER <sup>1</sup>	<input type="checkbox"/>	<input type="checkbox"/>	<input type="checkbox"/>	<input type="checkbox"/>	<input type="checkbox"/>	<input type="checkbox"/>
BLACK/RED LEATHER	<input type="checkbox"/>	<input type="checkbox"/>	<input checked="" type="checkbox"/>	<input checked="" type="checkbox"/>	<input type="checkbox"/>	<input type="checkbox"/>
NISMO® BLACK/RED LEATHER	<input type="checkbox"/>	<input type="checkbox"/>	<input type="checkbox"/>	<input type="checkbox"/>	<input checked="" type="checkbox"/>	<input checked="" type="checkbox"/>



Solid Red A54

Deep Blue Pearl RAY

Jet Black GAG

	TRACK		TRACK		TRACK	
	PURE	PREMIUM	EDITION	NISMO	PURE	PREMIUM
BLACK LEATHER	<input checked="" type="checkbox"/>	<input checked="" type="checkbox"/>	<input type="checkbox"/>	<input type="checkbox"/>	<input type="checkbox"/>	<input type="checkbox"/>
KURO NIGHT LEATHER <sup>1</sup>	<input type="checkbox"/>	<input type="checkbox"/>	<input type="checkbox"/>	<input type="checkbox"/>	<input type="checkbox"/>	<input type="checkbox"/>
RAKUDA TAN LEATHER <sup>1</sup>	<input type="checkbox"/>	<input type="checkbox"/>	<input type="checkbox"/>	<input type="checkbox"/>	<input type="checkbox"/>	<input type="checkbox"/>
RED AMBER LEATHER <sup>1</sup>	<input type="checkbox"/>	<input type="checkbox"/>	<input type="checkbox"/>	<input type="checkbox"/>	<input type="checkbox"/>	<input type="checkbox"/>
BLACK/RED LEATHER	<input type="checkbox"/>	<input type="checkbox"/>	<input checked="" type="checkbox"/>	<input checked="" type="checkbox"/>	<input type="checkbox"/>	<input type="checkbox"/>
NISMO® BLACK/RED LEATHER	<input type="checkbox"/>	<input type="checkbox"/>	<input type="checkbox"/>	<input type="checkbox"/>	<input checked="" type="checkbox"/>	<input checked="" type="checkbox"/>

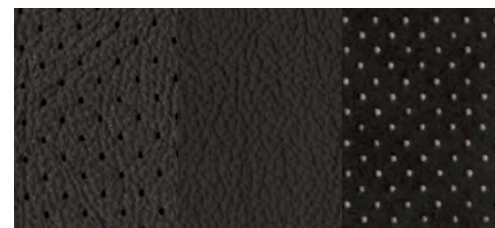
Standard  
 Optional

Nissan has taken care to ensure that the color swatches presented here are the closest possible representations of actual vehicle colors. Swatches may vary slightly due to the printing process and whether viewed in daylight, fluorescent or incandescent light. Please see the actual colors at your local Nissan dealer.

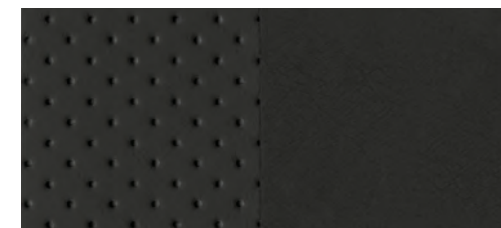
## CHOOSE YOUR INTERIOR



GT-R® Premium shown in Rakuda Tan Semi-aniline Leather.



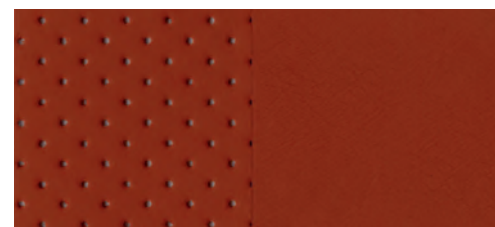
Black Leather/Synthetic-suede Inserts  
Premium



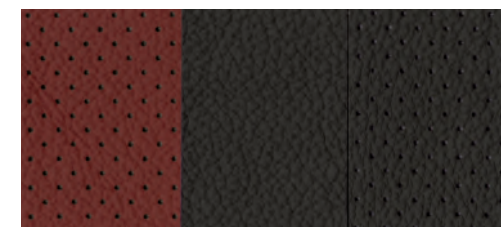
Kuro Night Semi-aniline Leather<sup>1</sup>  
Premium Interior Package



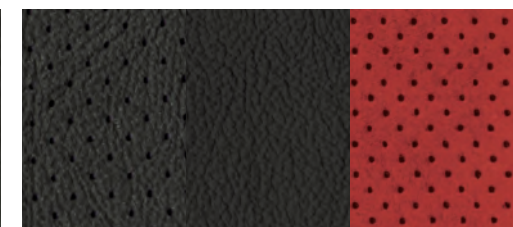
Rakuda Tan Semi-aniline Leather<sup>1</sup>  
Premium Interior Package



Red Amber Semi-aniline Leather<sup>1</sup>  
Premium Interior Package



Black/Red Leather  
Track Edition



Black Leather/Red Synthetic-suede Inserts  
NISMO

## CHOOSE YOUR TRIM LEVEL

### PURE

- 3.8-liter twin-turbocharged V6 engine
- Dual-clutch 6-speed transmission
- ATTESA E-TS® All-Wheel Drive
- 20" Super-lightweight RAYS® forged-alloy wheels
- Dunlop® SP Sport MAXX GT600 DSST CTT high-performance run-flat tires<sup>2</sup>
- Nissan/Brembo® braking system
- Bilstein® DampTronic® suspension system
- Advanced Vehicle Dynamic Control (VDC)<sup>3</sup> with three driver-selectable modes
- Multi-LED headlights with signature lighting
- Nissan Navigation System<sup>4</sup>
- NissanConnect® Services powered by SiriusXM<sup>5</sup>
- Apple CarPlay™<sup>5</sup>
- Driver-configurable Multi-Function Display system
- Leather-appointed front seats with synthetic suede inserts
- AM/FM/CD audio system with six speakers

#### KEY AVAILABLE PACKAGE:

- All-Weather Package



### TRACK EDITION®

#### INCLUDES PREMIUM EQUIPMENT PLUS:

- NISMO black 20" super-lightweight RAYS® forged-alloy wheels
- Dunlop® SP Sport MAXX® GT600 DSST CTT (NR1) high-performance run-flat tires<sup>2</sup>
- NISMO-tuned suspension
- NISMO-tuned 17.3 mm hollow rear stabilizer bar
- Body bonding to key spot welds
- Dry carbon-fiber rear spoiler<sup>7</sup>
- Black/Red interior treatment
- Black/Red Recaro® leather-appointed front seats



### PREMIUM

#### INCLUDES PURE EQUIPMENT PLUS:

- Titanium exhaust with exhaust sound control
- Bose® audio system
- 11 Speakers, including dual subwoofers
- Active Noise Cancellation
- Active Sound Enhancement

#### KEY AVAILABLE PACKAGES:

- Premium Interior Package
- All-Weather Package



### NISMO®

#### INCLUDES PREMIUM EQUIPMENT PLUS:

- NISMO-tuned 600-hp, 3.8-liter, high-capacity twin-turbocharged V6 engine
- NISMO-tuned suspension
- NISMO-tuned 17.3-mm hollow rear stabilizer bar
- NISMO black 20" super-lightweight RAYS® forged-alloy wheels
- Dunlop® SP Sport MAXX® GT600 DSST CTT (NR1) high-performance run-flat tires<sup>2</sup>
- NISMO aerodynamic body design - carbon-fiber front and rear fascia, side sills, and rear spoiler
- Carbon-fiber trunk lid
- NISMO tachometer
- NISMO Recaro® leather-appointed front seats with red synthetic suede inserts
- NISMO Black/Red interior treatment
- NISMO Alcantara®-wrapped steering wheel and gauge hood



## GENUINE NISSAN ACCESSORIES

# BECAUSE YOU'RE NOT DRIVING A CAR, YOU'RE DRIVING A LEGEND

Every Genuine Nissan Accessory is custom-fit, custom-designed and durability-tested. Each one is also backed by Nissan's 3-year/36,000-mile (whichever occurs first) limited warranty (if installed by dealer at the time of purchase).<sup>9</sup> Ask your dealer whether a specific Genuine Nissan Accessory may be financed when installed by the dealer at the time of purchase.

**GT-R® Genuine Branded Merchandise** includes apparel, lifestyle, and sports and leisure equipment to show your passion wherever you – and your GT-R – go.

**A. Premium Sport Floor Mats with Carbon-fiber Inserts**

The ultimate mat for the ultimate supercar.

**B. GT-R Driving Shirt**

Designed with mesh knit side panels to keep you as cool as you look. To shop online for GT-R merchandise, go to [Nissancollections.com](http://Nissancollections.com).

**C. Standard Tool Kit**

This 7-piece kit includes a flathead screwdriver, pliers, two box-end wrenches, a flashlight, and a pair of gloves – all in a stylish leather case.

**D. Chrome Jack with GT-R Logo**

Exquisitely detailed, it will give you a lift every time you look at it.

**E. GT-R Carpeted Floor Mats**

Preserve and protect your GT-R.

**F. Nissan Valve Stem Caps**

Show your Nissan pride.

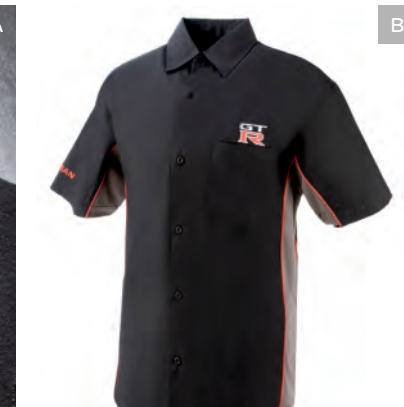
**G. Wheel Locks**

Four Wheel Locks and coded Wheel Lock Socket keep your wheels out of the wrong hands.

**Additional Accessories:**

- Emergency Road Kit
- Vehicle Cover Cable Lock<sup>10</sup>

For more information and to shop online for GT-R Genuine Nissan Accessories, go to [bit.ly/18GTR-estore](http://bit.ly/18GTR-estore)



## SPECIFICATIONS

Engines	Pure	Premium	Track Edition	NISMO®
3.8-liter twin-turbocharged 24-valve V6	■	■	■	
—Horsepower – 565 horsepower @ 6,800 rpm				
—Torque – 467 lb-ft of torque @ 3,300–5,800 rpm				
NISMO-tuned 3.8-liter high-capacity twin-turbocharged 24-valve V6				■
—Horsepower – 600 horsepower @ 6,800 rpm				
—Torque – 481 lb-ft of torque @ 3,600–5,800 rpm				
Special 50:50 coolant mix	A	A		

Drivetrain	Pure	Premium	Track Edition	NISMO®
ATTESA E-TS® All-Wheel Drive (AWD) with patented independent rear-mounted transaxle	■	■	■	■
Advanced Vehicle Dynamic Control (VDC) <sup>3</sup>	■	■	■	■
Electronic Traction Control System (TCS)	■	■	■	■
Dual-clutch 6-speed transmission with paddle shifters	■	■	■	■
Downshift Rev Matching	■	■	■	■
1.5-way mechanical limited-slip rear differential	■	■	■	■
Hill start assist	■	■	■	■

Brakes	Pure	Premium	Track Edition	NISMO®
Nissan/Brembo® braking system – 4-wheel disc brakes, 15.4" front and 15.0" rear two-piece floating-rotors with diamond-pattern internal ventilation	■	■	■	■
Super-rigid 6-piston front/4-piston rear monoblock calipers	■	■	■	■
4-wheel Anti-lock Braking System (ABS)	■	■	■	■
Electronic Brake force Distribution (EBD)	■	■	■	■

Suspension/Chassis Bracing/Steering	Pure	Premium	Track Edition	NISMO®
Double-wishbone front suspension with aluminum arms	■	■	■	■
Multi-link rear suspension with aluminum arms	■	■	■	■
Rigid front and rear suspension subframes, assembled in high-precision jigs similar to a racecar, with 6-point mounting	■	■	■	■
Bilstein® DampTronic® suspension system	■	■	■	■
NISMO-tuned suspension			■	■
Hollow front and rear stabilizer bars			■	■
NISMO-tuned 17.3 mm hollow rear stabilizer bar			■	■
Vehicle-speed-sensitive power steering	■	■	■	■
2.4 Steering-wheel turns lock-to-lock	■	■	■	■

Wheels/Tires	Pure	Premium	Track Edition	NISMO®
Super-lightweight RAYS® forged-alloy wheels: 20" x 9.5" (front) 20" x 10.5" (rear)	■	■		
NISMO black super-lightweight RAYS® forged-alloy wheels: 20" x 10.0" (front) 20" x 10.5" (rear)			■	■
Exclusively developed tires, nitrogen-filled at factory: 255/40ZRF20 (front) 285/35ZRF20 (rear) <sup>11</sup>	■	■	■	■
Dunlop® SP Sport MAXX GT600 DSST CTT high-performance run-flat tires <sup>2</sup>	■	■		
Dunlop® SP Sport MAXX® GT600 DSST CTT (NR1) high-performance run-flat tires <sup>2</sup>			■	■
Dunlop® SP Sport 7010 all-season run-flat tires	A	A		

■ Standard

□ Optional

P Part of Premium Interior Package

A Part of All-Weather Package

Chassis/Body	Pure	Premium	Track Edition	NISMO®
Premium Midship (PM) platform with hybrid unibody	■	■	■	■
Aluminum hood and outer door skins	■	■	■	■
Aluminum trunk lid	■	■	■	
Carbon-fiber trunk lid				■
Die-cast aluminum front shock towers and inner door structures	■	■	■	■
Carbon-fiber engine chassis brace	■	■	■	■
Carbon-composite front cross member/radiator support	■	■	■	■
Body bonding to key spot welds			■	■

Exterior Features	Pure	Premium	Track Edition	NISMO®
Aerodynamic undertrays	■	■	■	■
Body-color rear spoiler	■	■		
Dry carbon-fiber rear spoiler <sup>7</sup>			■	
NISMO aerodynamic body design – carbon-fiber front and rear fascia, side sills, and rear spoiler				■
Multi-LED headlights with signature lighting	■	■	■	■
LED Daytime Running Lights and LED taillights	■	■	■	■
Titanium exhaust with exhaust sound control		■	■	■

Comfort/Convenience	Pure	Premium	Track Edition	NISMO®
Nissan Navigation System <sup>4</sup>	■	■	■	■
NissanConnect® Services powered by SiriusXM® <sup>5</sup>	■	■	■	■
Apple CarPlay™ <sup>5</sup>	■	■	■	■
8.0" multi-touch control color monitor	■	■	■	■
Voice Recognition for audio and navigation <sup>4</sup>	■	■	■	■
Display Commander	■	■	■	■
SiriusXM® Traffic and Travel Link with 3-month complimentary trial access <sup>5</sup>	■	■	■	■
Driver-configurable Multi-Function Display system	■	■	■	■
RearView Monitor <sup>12</sup>	■	■	■	■
Front and Rear Sonar System <sup>13</sup>	■	■	■	■
Nissan Intelligent Key® with Push Button Ignition	■	■	■	■
NISMO tachometer				■
Bluetooth® Hands-free Phone System <sup>5</sup>	■	■	■	■
HomeLink® Universal Transceiver	■	■	■	■
Dual Zone Automatic Temperature Control	■	■	■	■

Seating/Appointments	Pure	Premium	Track Edition	NISMO®
Leather-appointed front seats with synthetic suede inserts	■	■		
Hand-stitched semi-aniline leather-appointed front seats		P		
Black/Red Recaro® leather-appointed front seats			■	
NISMO Recaro® leather-appointed front seats with synthetic suede inserts				■
Heated front seats	■	■	■	■
Hand-stitched semi-aniline leather interior treatments		P		
Black/Red interior treatment			■	
NISMO Black/Red interior treatment				■
NISMO Alcantara®-wrapped steering wheel and gauge hood				■
Aluminum-trimmed pedals	■	■	■	■

Audio/Entertainment	Pure	Premium	Track Edition	NISMO®
AM/FM/CD audio system with six speakers	■			
Bose® audio system with 11 speakers, including dual subwoofers		■	■	■
Active Noise Cancellation and Active Sound Enhancement		■	■	■
SiriusXM® Satellite Radio with 3-month complimentary trial access <sup>5</sup>	■	■	■	■
HD Radio®	■	■	■	■
Two USB ports	■	■	■	■
Streaming audio via Bluetooth® wireless technology <sup>5</sup>	■	■	■	■
Steering wheel-mounted audio controls	■	■	■	■
Speed-sensitive volume control	■	■	■	■

Safety/Security	Pure	Premium	Track Edition	NISMO®
Nissan Advanced Air Bag System with dual-stage supplemental front air bags with seat belt and occupant-classification sensors <sup>14</sup>	■	■	■	■
Driver and front-passenger side-impact supplemental air bags <sup>14</sup>	■	■	■	■
Roof-mounted curtain side-impact supplemental air bags for front occupant head protection <sup>14</sup>	■	■	■	■
Front seat belts with pretensioners and load limiters	■	■	■	■
LATCH System (Lower Anchors and Tethers for CHildren)	■	■	■	■
Zone Body construction with front and rear crumple zones	■	■	■	■
Hood-buckling creases and energy-absorbing steering column	■	■	■	■
Tire Pressure Monitoring System (TPMS) with individual tire pressure display <sup>15</sup>	■	■	■	■
Nissan Vehicle Immobilizer System	■	■	■	■
Vehicle Security System	■	■	■	■

## PACKAGES

Premium Interior Package
Hand-stitched Semi-Aniline Leather interior treatments
Hand-stitched Semi-Aniline Leather-appointed front seats

All-Weather Package
Special 50:50 coolant mix
Dunlop® SP Sport 7010 all-season run-flat tires

## DIMENSIONS/CAPACITIES/WEIGHTS/MPG

Dimensions	
<b>Exterior – inches</b>	
Wheelbase	109.4
Overall length	185.4; 184.6 NISMO
Overall width	74.6
Overall height	53.9
Track width (front/rear)	62.6/63.0; 63.0/63.0 Track Edition, NISMO

Aerodynamics – Cd	
Drag coefficient	0.26

Interior (front/rear) – inches	
Head room	38.1/33.5
Hip room	54.7/44.9
Leg room	44.6/26.4
Shoulder room	54.3/50.0

Capacities	
Interior passenger volume (cu. ft.)	79.0
Cargo volume (cu. ft.)	8.8
Fuel tank (gals.)	19.5

Curb Weights – Lbs.	Pure	Premium	Track Edition	NISMO
Base total	3,929	3,933	3,915	3,911
Weight distribution	54/46	54/46	54/46	54/46

2018 EPA Fuel Economy Estimates	
City/highway/combined MPG	16/22/18
— Actual mileage may vary with driving conditions – use for comparison only.	

## NISSAN ROADSIDE ASSISTANCE

Your peace of mind is on us. For 36 months or 36,000 miles, whichever comes first, your new Nissan is covered for the following:<sup>5</sup>

- Flat-tire changes
- Trip Interruption benefits
- Vehicle lockouts
- Emergency fuel delivery
- Jump starts

Follow Nissan on:



visit [NissanUSA.com/GT-R](http://NissanUSA.com/GT-R)

PRINTED IN POLAND