

'66 Plymouth Belvedere



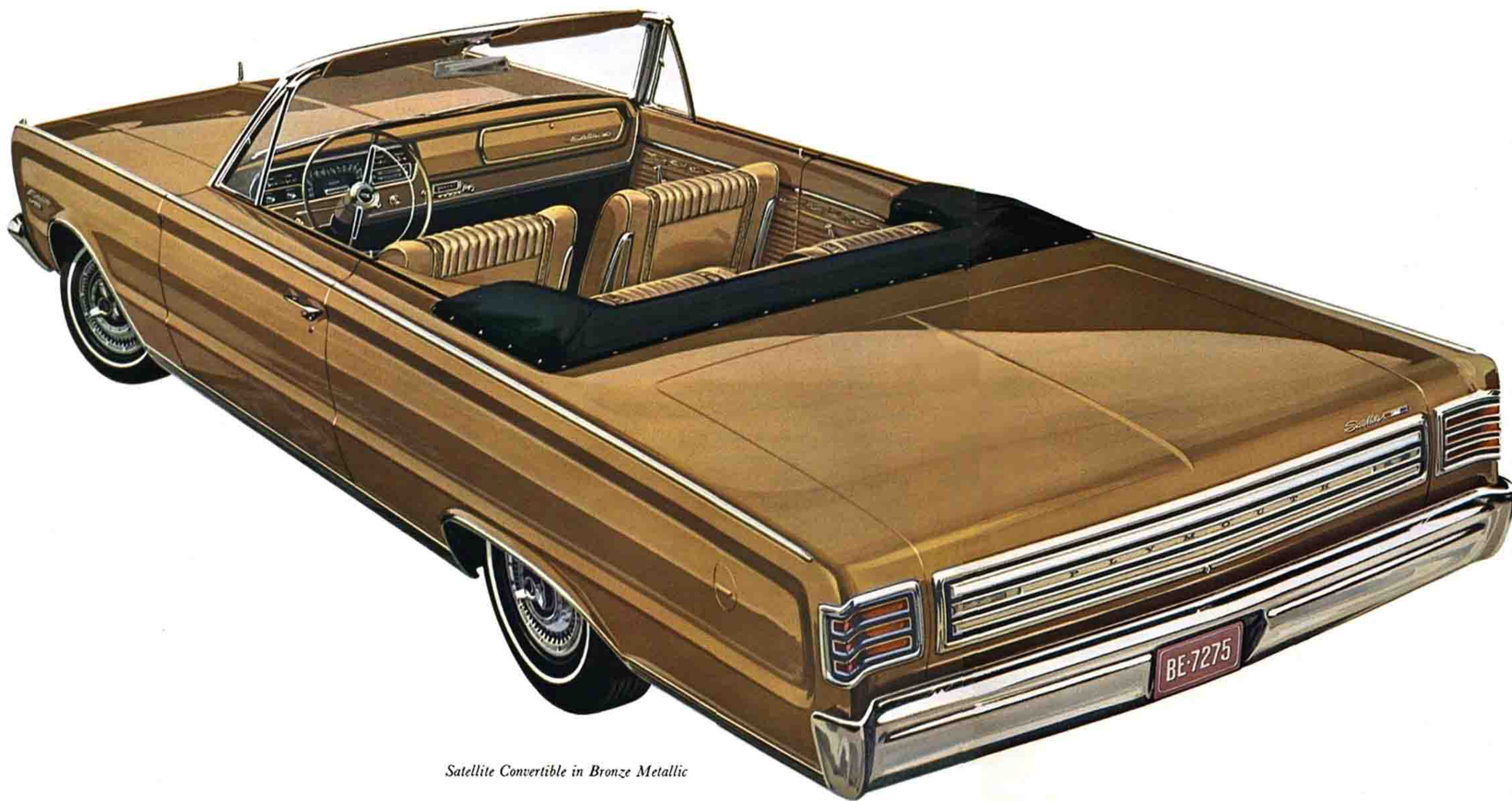
Satellite



Plymouth Satellite—the top of the Belvedere line—and the newest, sleekest Plymouth for '66. Satellite is a big, bold approach to everyday driving that comes jauntily packaged on a 116-inch wheelbase. From the deep-skirted front bumpers to the stylishly ribboned tail-lights—Satellite is all-new beauty. Performance? Your first turn behind the wheel will tell the story. Performance is as performance does. And Satellite, with the 273-cu.-in. V-8 engine and 3-speed manual transmission, does it all. Satellite, in hardtop or convertible, is the striking new leader of the '66 Belvedere line that includes wagons, convertibles, sedans and hardtops. 18 brand-new Belvedere models. 17 solid colors along with 18 color combinations . . . in glowing acrylic enamel that's so hard, you can buff off scratches. Plus a raft of popular options. Belvedere engines range from the economical 225-cu.-in. "6" to the optional Commando 383-cu.-in. V-8. '66 Belvedere . . . new style and performance in a large economy size. Check the following pages and see why it's a great year to . . . *Let yourself go . . . Plymouth.*



Satellite 2-door Hardtop in Dark Blue Metallic



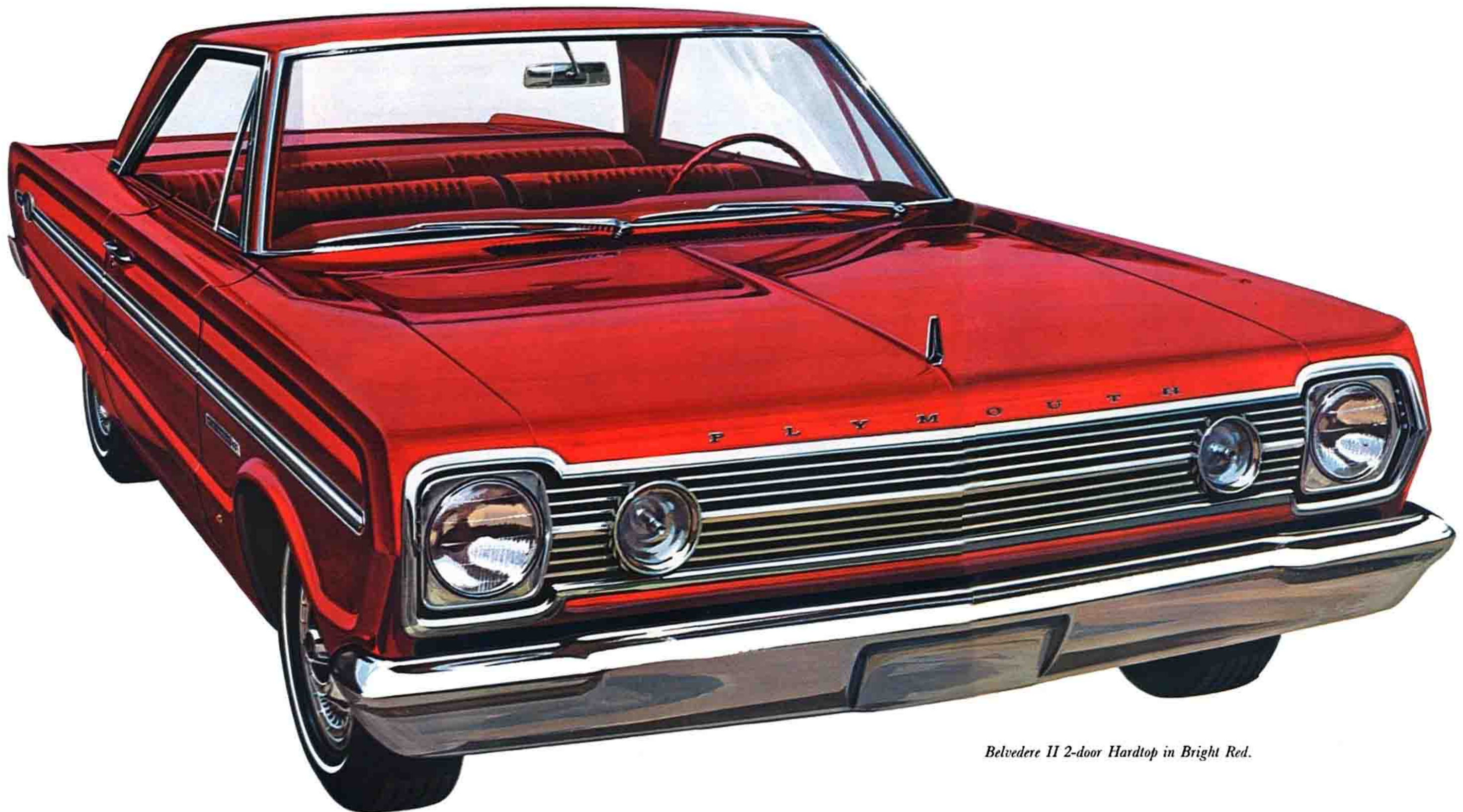
Satellite Convertible in Bronze Metallic

Satellite's interior is highlighted by new shell-type bucket seats, a new center console, and safety-designed inside door handles. The color-keyed carpeting, in vivid shades, and the all-vinyl trim, in five lush colors, give Satellite interiors a new touch of refinement . . . and fresh brilliance.

Satellite Standard Equipment/273-cu.-in. V-8 engine/3-speed manual transmission/Front bucket seats/Compartment console/Knock-off hub wheel covers/Fender-mounted turn signal indicators/Variable-speed electric windshield wipers/Padded instrument panel/Windshield washer/Front and rear seat belts/Left outside rear-view mirror/Back-up lights/Console lights/Glove box light/Deep-pile formed carpeting/Self-adjusting brakes/Torsion-bar suspension/Heater-defroster/Front and rear armrests/Chrysler Corporation alternator.

Popular Options and Accessories/3 optional Commando V-8 engines available/3-speed TorqueFlite automatic transmission/"4-on-the-Floor" transmission/Deluxe steering wheel/Power steering/Power brakes/AM radio/Vinyl roof/Electric clock/Air conditioning/Sure-Grip differential/Bumper guards/Tinted glass/Whitewall tires/Power windows/Retractors and boots for seat belts/Parking-brake light/Tachometer/Trailer-towing package/Emergency flasher. (See pages 12 and 13 for additional options and accessories.)




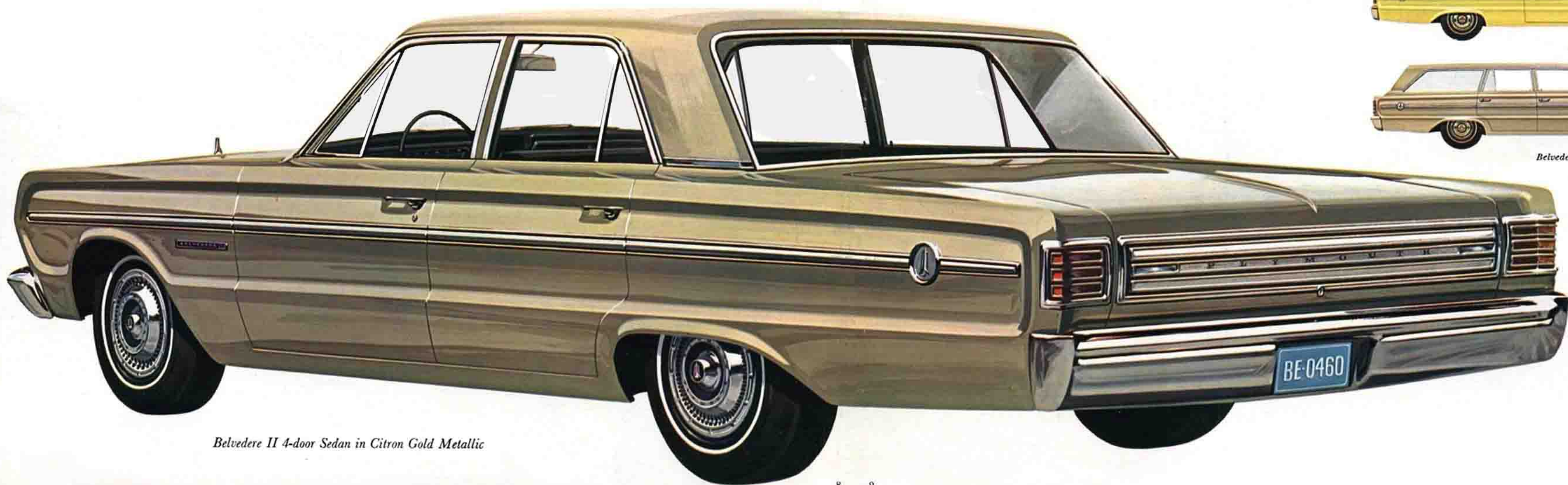


Belvedere II 2-door Hardtop in Bright Red.

Belvedere II



 The '66 Plymouth Belvedere II is completely new. New styling. New performance. New features. 10 distinctive models to choose from. 5 big engines. Ranging from the economical 225-cu.-in. standard "6" to the optional Commando 383-cu.-in. V-8 with a 4-barrel carburetor. *New and functional.* With large, round Park/Turn signals that are mounted on the broad Belvedere grille. A recessed spare tire that allows for more usable trunk space. And a gas filler cap that is designed as an integral part of the side molding. *New and beautiful.* With increased glass area and curved side glass. Buffable acrylic enamel. And richly appointed vinyl-and-fabric interiors. *New safety-type features.* Front and rear seat belts. A padded instrument panel. Parallel windshield wipers. And a bright, appointed, safety-type inside door handle. Add to this a bevy of "blue ribbon" options and accessories for your Belvedere II wagon, convertible, hardtop, or sedan and you have a host of excellent reasons to . . . *Let yourself go . . . Plymouth.*



Belvedere II 4-door Sedan in Citron Gold Metallic

The full-length crease lines and smooth-flowing roof contours characterize the all-new body styling of Belvedere II.

Belvedere II Standard Equipment/225-cu.-in. 6-cyl. engine/273-cu.-in. V-8 engine*/3-speed manual transmission/Padded instrument panel/Front and rear seat belts/Left outside rear-view mirror/Windshield washer / Variable-speed electric windshield wipers / Back-up lights / Deep-pile formed carpeting / Heater-defroster / Chrysler Corporation alternator / Vinyl-and-fabric interiors / All-vinyl interiors (convertibles & wagons only) / Torsion-bar suspension / Self-adjusting brakes / Electric tailgate window lift (3-seat wagon only).

Popular Options and Accessories/3 optional Commando V-8 engines available/3-speed TorqueFlite automatic transmission/"4-on-the-Floor" transmission/Deluxe steering wheel/Power steering/Power brakes / AM radio / Vinyl roof / Electric clock / Air conditioning / Sure-Grip differential / Bumper guards / Tinted glass / Whitewall tires / Power windows. (See pages 12 and 13 for additional options and accessories.)

*Price of standard vehicle will vary, dependent on choice of engine. The "Standard 8", naturally, is priced somewhat higher than the "Standard 6".



Belvedere II Convertible/Yellow



Belvedere II 3-seat Station Wagon/Beige

Belvedere I



Belvedere I 2-door Sedan/Light Turquoise Metallic



Belvedere I 4-door Sedan/Light Blue Metallic



Belvedere I 2-seat Station Wagon in Dark Turquoise Metallic

The Belvedere I wagon—like the entire Belvedere I line—is a study in roominess, convenience and economy. Improved second-seat folding, increased carrying capacity, a hidden storage area, low-effort tailgate mechanism and all-new styling tell the story. Belvedere I and Belvedere II wagons are bigger in '66 with a 117-inch wheelbase.

Belvedere I Standard Equipment / 225-cu.-in. 6-cyl. engine / 273-cu.-in. V-8 engine* / 3-speed manual transmission / Padded instrument panel / Front and rear seat belts / Left outside rear-view mirror /

Windshield washer / Variable-speed electric windshield wipers / Back-up lights / Heater-defroster / Chrysler Corporation alternator / Torsion-bar suspension / Self-adjusting brakes.

Popular Options and Accessories / 3 optional Commando V-8 engines available / 3-speed automatic transmission / "4-on-the-Floor" transmission / Deluxe steering wheel / Power steering / Power brakes / AM radio / Air conditioning / Sure-Grip differential. (See pages 12 and 13 for additional options and accessories.)

*Price of standard vehicle will vary, dependent on choice of engine. The "Standard 8", naturally, is priced somewhat higher than the "Standard 6".

Options, Accessories and Engines



1



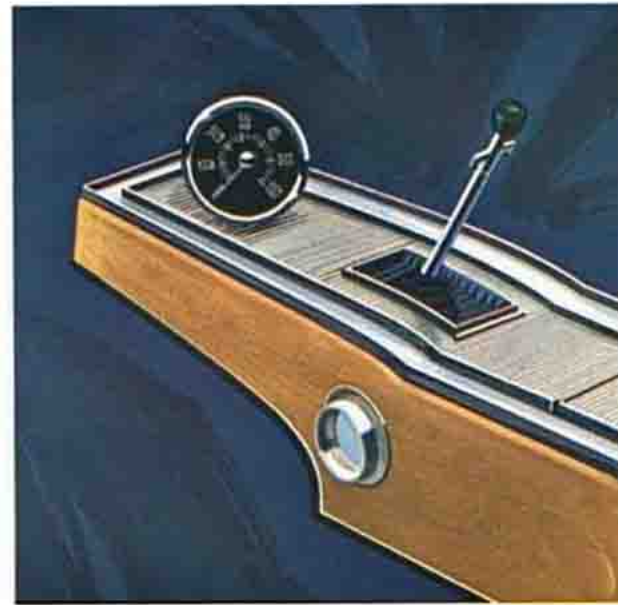
2



3



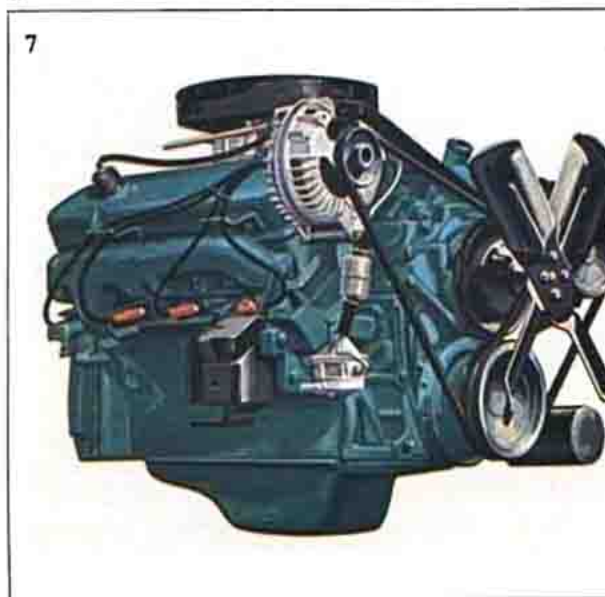
4



5



6



7

	225 Standard "6"	273 Standard V-8	318 Optional V-8	361 Optional Commando V-8	383 Optional Commando V-8
Horsepower	145 hp at 4000 rpm	180 hp at 4200 rpm	230 hp at 4400 rpm	265 hp at 4400 rpm	325 hp at 4800 rpm
Torque, lbs.-ft.	215 at 2400 rpm	260 at 1600 rpm	340 at 2400 rpm	380 at 2400 rpm	425 at 2800 rpm
Compression ratio	8.4 to 1	8.8 to 1	9.0 to 1	9.0 to 1	10.0 to 1
Bore, inches	3.40	3.63	3.91	4.12	4.25
Stroke, inches	4.125	3.31	3.31	3.38	3.38
Displacement, cu. in.	225	273	318	361	383
Carburetor type	1-bbl.	2-bbl.	2-bbl.	2-bbl.	4-bbl.
Air cleaner type	Silenced	Silenced	Silenced	Silenced	2-Snorkel
Exhaust	Single	Single	Single	Single	Dual
Camshaft	Standard	Standard	Standard	Standard	Standard
Fuel	Regular	Regular	Regular	Regular	Premium

8

1—Air Conditioning. Gives you "controlled weather" inside, no matter what's going on outside. Features Chrysler Corporation's own reheat principle. Responds quickly to change in control settings.

2—Deluxe Wheel Covers. Sleek, sporty design blends harmoniously with the all-new Belvedere styling. Wheel cover shown is standard on Satellite—optional on Belvedere I & II (less spinner).

3—Power Steering & 3-Spoke Steering Wheel. Easy does it on expressway or driveway with optional power steering. The 3-spoke steering wheel—with the look of fine wood—has a track record for good looks and "racing car" feel.

4—Power Brakes. A new power brake booster affords the driver a more realistic "feel" for the exact amount of pedal effort required to produce the desired braking action.

5—"4-on-the-Floor" Transmission. If you like to wheel along on the "sporty side" of the street, this fully synchronized option is a must. Chrysler's new linkage makes for rapid, easy shifting into all forward speeds.

6—AM Radio. This powerful "Transaudio" push-button radio is fully transistorized. Rich, clear reception and easy tuning.

7—Commando 383-cu.-in. V-8 Engine. A performance-plus engine that has a four-barrel carburetor. Develops 325 hp at 4800 rpm.

8—Belvedere Engine Availabilities Chart. Three rugged optional V-8 performers. Plus the Standard "6" and Standard V-8.

ADDITIONAL OPTIONS AND ACCESSORIES

Vinyl Roof Coverings. Rich, pebbled black or white vinyl covering is available for hardtops only. Weather-resistant.

Seat Belt Retractors and Boot—Front. Belts slip neatly and conveniently into boots when not in use. Boots for retractors available for front seat belts only; seat belt retractors—front and rear.

TorqueFlite Transmission. Smooth-shifting, quality-engineered automatic transmission. Three-speed.

Sure-Grip Differential. This option is designed to give positive power to both rear wheels for improved traction. Especially effective on gravel or other loose surfaces, or on ice or snow.

Tinted Window Glass. Performs the dual function of reducing glare, and helping to keep the car interior cool.

Bumper Guards. Give grille area a "custom-chrome" look. Molded rubber inserts protect against scratching. Front and rear.

Light Packages. The convenience of a parking brake light, glove box light or a trunk compartment light can be yours at a surprisingly low cost.

Station Wagon Luggage Rack. This rugged extruded aluminum convenience option is adjustable.

Trailer-Towing Packages. Plymouth has specially designed, factory-installed trailer-towing equipment available for most models. For detailed information ask your Plymouth Dealer for the highly informative booklet on this subject. *Let yourself go . . . Plymouth.*

Ask your Plymouth Dealer for other available options and accessories.

Colors and Specifications



Dark Blue Metallic



Light Blue Metallic



Bronze Metallic



Light Turquoise Metallic



Bright Red



Light Blue



Citron Gold Metallic



Dark Green Metallic



Yellow



Dark Red Metallic



Beige



Light Mauve Metallic



Dark Turquoise Metallic



Silver Metallic*

Exterior Colors—17 bold, beautiful solid colors are available in the '66 Belvedere line. In tough, chip-resistant, buffable acrylic enamel. Three solid colors available (but not shown in color illustrations at left) are: Soft Yellow, White, and Black.

2-Tone Color Combinations—18 optional 2-tone (body color/top color) color combinations are available for most models in the '66 Belvedere line.

Interior Colors and Fabrics—The '66 Belvedere interiors are color-coordinated to complement the exterior colors. You can choose from a spirited array of trim materials, fabrics and colors. *Satellite* interiors are covered with a supple, all-vinyl trim. *Satellite* interior is shown on page 5. In 5 colors: Blue, Tan, Red Metallic, Citron, and Black. *Belvedere II* has one basic trim style for both the all-vinyl and the combination vinyl-and-cloth trim. 6 vinyl colors and 5 vinyl-and-cloth colors to choose from. *Belvedere II* interior is shown on page 7. *Belvedere I* has a combination vinyl-and-cloth trim for the sedans and an all-vinyl trim for wagons. Available in 3 vinyl colors and 3 vinyl-and-cloth colors. *Belvedere I* interior is shown on page 11.

NOTE: Not all body colors, color combinations and interior colors & fabrics are available for all cars in the Belvedere line. Ask your Plymouth Dealer for details.

*Silver Metallic optional at extra cost.

Exterior Dimensions

	Wagons	Others†
Wheelbase	117.0 in.	(A) 116.0 in.
Track, front	59.5 in.	59.5 in.
Track, rear	58.5 in.	58.5 in.
Length, overall (2-seat)	207.1 in.	(B) 200.5 in.
(3-seat)	208.1 in.	
Width, overall	75.5 in.	75.5 in.
Height, overall* (2-seat)	55.0 in.	(C) 54.0 in.
(3-seat)	55.2 in. (h'top & conv.)	53.2 in.

†Basic measurements for V-8 sedans, unless otherwise noted.
*Height dimensions are based on a newly established full rated AMA standard of measurements.

Interior Dimensions*

	Wagons	Others†
Headroom, front	39.4 in.	(D) 38.8 in. (hardtops) 37.8 in. (convertibles) 38.7 in.
Headroom, rear	39.3 in.	37.8 in. (hardtops) 37.1 in. (convertibles) 37.2 in. (Satellite) 34.3 in.
Legroom, front	42.0 in.	42.0 in. (Satellite) 41.6 in. (hardtop & conv.) 34.2 in.
Legroom, rear	36.5 in.	36.5 in. (Satellite) 34.3 in. (hardtop & conv.) 34.2 in.
Shoulder-room, front	58.0 in.	58.0 in.
Shoulder-room, rear	58.0 in.	58.0 in.
Seat height, front	8.6 in.	8.6 in. (hardtop & conv.) 9.9 in.
Seat height, rear	11.0 in.	11.0 in.
Rear-seat kneeroom	4.4 in.	4.4 in.

†Basic measurements for V-8 sedans, unless otherwise noted.
*Height dimensions are based on a newly established full rated AMA standard of measurements.

Brakes*

Hydraulic 10-inch diameter, 2.5-in.-wide, servo-contact, self-energizing brakes, with bonded linings. Lining area is 195.2 square inches for both passenger cars and station wagons. Brake shoes are internal-expanding type. A new self-adjusting feature (activated during reverse stops) is incorporated in the design. Separate, foot-operated parking brake, cable connected, acts on each rear wheel.

*Standard on V-8s and 6 & V-8 wagons.

Electrical System

Heavy-duty, 12-volt, 54-plate, 48-ampere-hour battery. Chrysler Corporation alternator with high charging rate at low engine speeds.

Rear-Axle Ratios

Type: Hotchkiss drive, hypoid rear axle. Ratios: 225-cu.-in. "6" and 273-cu.-in. V-8 with 3-speed manual transmission—3.23 to 1. 361- and 383-cu.-in. V-8 with 4-speed manual transmission—3.23 to 1.

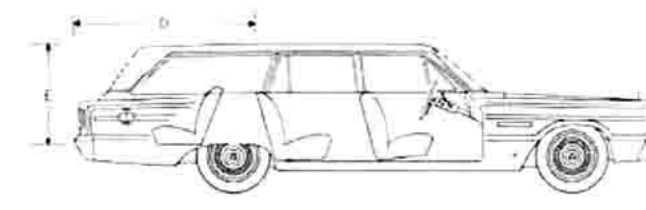
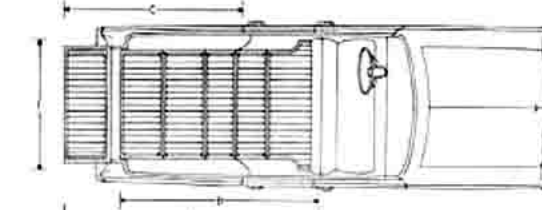
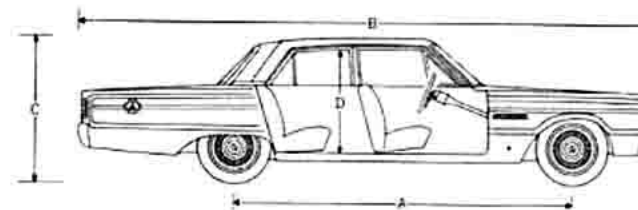
Tires and Wheels*

	Wheels	Tires
6-cylinder sedans and hardtops	14 x 5.0 K	6.95 x 14
8-cylinder sedans, hardtops, convertibles & 6-cyl. convertibles	14 x 5.0 K	7.35 x 14
2-seat station wagons	14 x 5.5 K	7.75 x 14
3-seat station wagons (Optional) sedans, hardtops and convertibles	14 x 5.5 K	8.25 x 14
(Optional) 2-seat wagons	14 x 5.5 K	8.25 x 14

*Safety-Rim wheels, with low-pressure tubeless tires, standard on all models.

Suspension

Front: Torsion bars and ball joints
Rear: 2.5-in.-wide asymmetrical leaf springs (4.5 leaves)
Shock absorbers: Oriflow type



Capacities

Fuel tank 19 gallons
Fuel tank, station wagons 19 gallons
Cooling system, 6-cylinder engines with heater, 13 quarts
Cooling system, 8-cylinder engines with heater, 21 quarts
Cooling system, Commando engines with heater, 17 quarts
Lubricating oil 4 quarts

Transmissions

Manual 3-speed (6s) 6.5 pints
..... (8s) 6.0 pints
Manual 4-speed (8s) 8.5 pints
Automatic 3-speed (6s & Std. V-8) 16.0 pints
..... (8s—optional) 18.5 pints

Roomy Dimensions of Belvedere Station

Wagon Cargo Compartments
Floor length, tailgate open, 2nd and 3rd seats folded (A) 121.4 in.
Floor length, tailgate closed, 2nd and 3rd seats folded (B) 92.2 in.
Floor length, tailgate open, 2nd seat up, 3rd seat folded (C) 88.1 in.
Floor length, tailgate closed, 2nd seat up, 3rd seat folded (D) 57.4 in.
Width between the rear wheel housings 45.3 in.
Height of rear opening (E) 30.4 in.
Width of rear opening at the floor (F) 51.5 in.

The policy of Chrysler Corporation is one of continual improvement in design and manufacture wherever possible to assure a still finer car. Hence, specifications, equipment, and prices are subject to change without notice. Product information published herein, while correct at time of publication, is subject to change. Automobiles pictured, in some cases, show extra-cost optional equipment items.

Customer Care and the Chrysler Corporation's 5-Year/50,000-Mile Engine and Drive Train Warranty*... a couple more good reasons for letting yourself go Plymouth '66.

*Here's how Plymouth's 5-year/50,000-mile engine and drive train warranty protects you: Chrysler Corporation confidently warrants all of the following vital parts of its 1966 cars for 5 years or 50,000 miles, whichever comes first, during which time any such parts that prove defective in material and workmanship will be replaced or repaired at a Chrysler Motors Corporation Authorized Dealer's place of business without charge for such parts

or labor: engine block, head and internal parts, intake manifold, water pump, transmission case and internal parts (excepting manual clutch), torque converter, drive shaft, universal joints, rear axle and differential and rear wheel bearings. Required maintenance: The following maintenance services are required under the warranty—change engine oil every 3 months or 4,000 miles, whichever comes first; replace oil filter every

second oil change; clean carburetor air filter every 6 months and replace it every 2 years; and every 6 months furnish evidence of this required service to a Chrysler Motors Corporation Authorized Dealer and request him to certify receipt of such evidence and your car's mileage. Simple enough for such important protection.



Let yourself go... *Plymouth*

PLYMOUTH DIVISION  CHRYSLER
MOTORS CORPORATION

